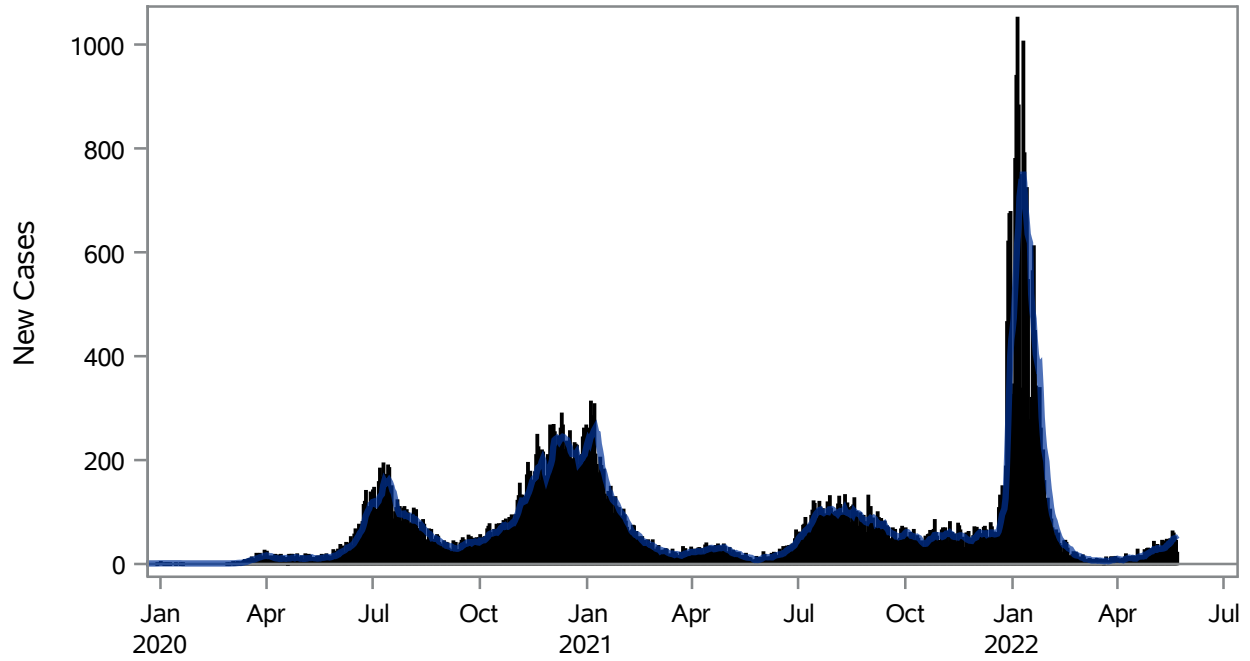


### COVID19 Cases for North Las Vegas, 7-Day Moving Average



■ New Cases    — 7-Day Moving Average

Investigations are ongoing; data are subject to change.

Reporting through 23MAY2022

North Las Vegas zip codes include 89030, 89031, 89032, 89033, 89036, 89081, 89084, 89085, 89086, 89087.

**Table 1: New COVID19 Cases and 7-Day Moving Average in North Las Vegas, Previous Two Weeks**

Date (Daily)	New Cases	7-Day Moving Average
10MAY2022	27	29.71
11MAY2022	32	30.29
12MAY2022	43	31.29
13MAY2022	46	34.71
14MAY2022	39	35.86
15MAY2022	43	39.14
16MAY2022	47	39.57
17MAY2022	45	42.14
18MAY2022	62	46.43
19MAY2022	58	48.57
20MAY2022	51	49.29
21MAY2022	44	50.00

---

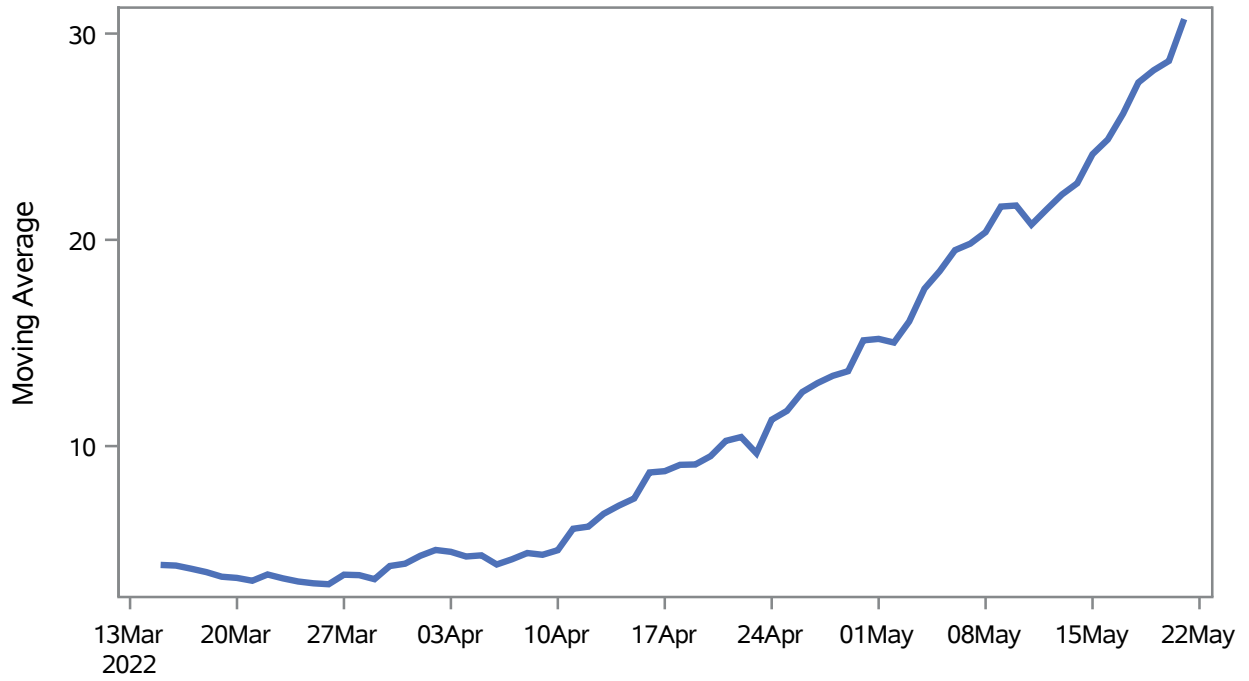
Note1: Event Date is calculated as follows based on completed information:  
1) Disease onset date 2) Disease diagnosis date 3) Lab result collection date 4) Report date to SNHD.

---

**Investigations are ongoing; data are subject to change.  
Reporting through 23MAY2022**

**North Las Vegas zip codes include 89030, 89031, 89032, 89033, 89036, 89081, 89084, 89085, 89086, 89087.**

### Percent of People Receiving COVID-19 Viral Tests Who Have Positive Results in North Las Vegas



Investigations are ongoing; data are subject to change.

Reporting through 23MAY2022

North Las Vegas zip codes include 89030, 89031, 89032, 89033, 89036, 89081, 89084, 89085, 89086, 89087.

**Table 2: Percent of People Receiving COVID-19 Viral Tests Who Have Positive Results in North Las Vegas**

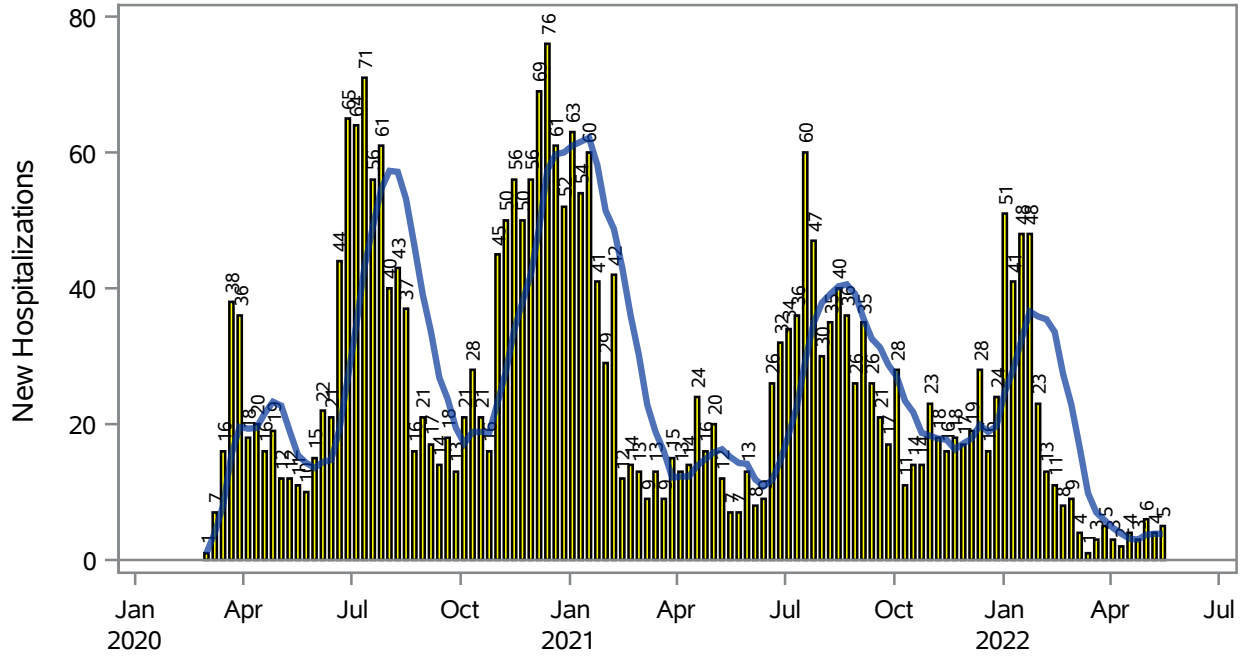
Collection Date	Positive	Negative	Equivocal	Total	% Positivity	7-Day Moving Average
07MAY2022	25	94		119	21.01	19.8
08MAY2022	24	75		99	24.24	20.4
09MAY2022	58	202		260	22.31	21.6
10MAY2022	41	175	1	217	18.89	21.7
11MAY2022	41	193		234	17.52	20.7
12MAY2022	53	152		205	25.85	21.5
13MAY2022	57	166		223	25.56	22.2
14MAY2022	36	109		145	24.83	22.7
15MAY2022	45	87		132	34.09	24.2
16MAY2022	80	213		293	27.30	24.9
17MAY2022	81	211	1	293	27.65	26.1
18MAY2022	88	224	1	313	28.12	27.6
19MAY2022	84	196		280	30.00	28.2
20MAY2022	83	205	1	289	28.72	28.7
21MAY2022	73	114		187	39.04	30.7

Note: Testing Data includes a 3 day delay

**Investigations are ongoing; data are subject to change.  
Reporting through 23MAY2022**

**North Las Vegas zip codes include 89030, 89031, 89032, 89033, 89036, 89081, 89084, 89085, 89086, 89087.**

### COVID19 Hospitalizations for North Las Vegas, 7-Day Moving Average



New Hospitalizations
  7-Day Moving Average

Investigations are ongoing; data are subject to change.

Reporting through 23MAY2022

North Las Vegas zip codes include 89030, 89031, 89032, 89033, 89036, 89081, 89084, 89085, 89086, 89087.

**Table 3: New COVID19-Related Hospitalizations and 7-Day Moving Average in North Las Vegas, previous month**

Week	Hospitalizations	7-Day Moving Average
24APR2022	3	3.00
01MAY2022	6	3.71
08MAY2022	4	3.86
15MAY2022	5	3.86

---

Note1: Admission Date is calculated as follows based on completed information:  
A) COVID19 Case is hospitalized B) COVID19 Case has a hospital admission date.

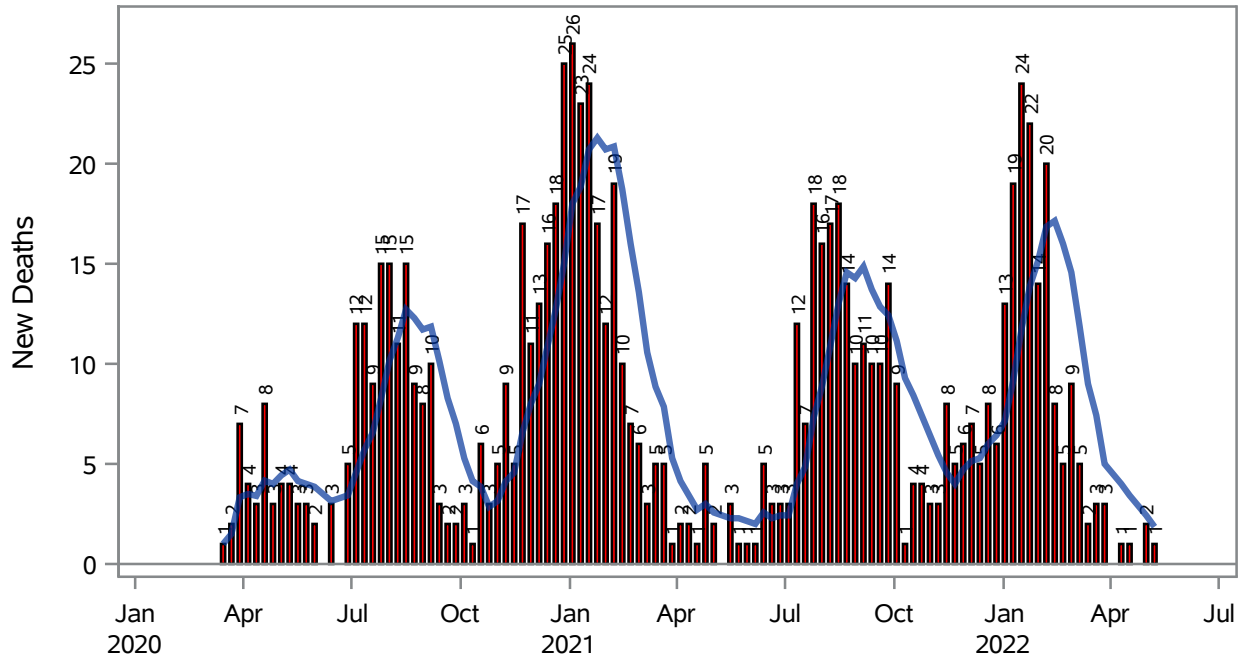
If admission date is missing, then the following is substituted temporarily, in order:  
1) Disease onset date 2) Disease diagnosis date 3) Lab result collection date 4) Report date to SNHD.

---

**Investigations are ongoing; data are subject to change.  
Reporting through 23MAY2022**

**North Las Vegas zip codes include 89030, 89031, 89032, 89033, 89036, 89081, 89084, 89085, 89086, 89087.**

### COVID19 Deaths for North Las Vegas, 7-Day Moving Average



■ New Deaths      — 7-Day Moving Average

Investigations are ongoing; data are subject to change.

Reporting through 23MAY2022

North Las Vegas zip codes include 89030, 89031, 89032, 89033, 89036, 89081, 89084, 89085, 89086, 89087.

**Table 4: New COVID19-Related Deaths and 7-Day Moving Average in North Las Vegas, Previous Month**

Week	Deaths	7-Day Moving Average
01MAY2022	2	2.43
08MAY2022	1	1.86

---

Note1: Date of Death is calculated as follows based on completed information:  
A) COVID19 Case is reported as deceased B) COVID19 Case has a reported date of death.

If date of death is missing, then the following is substituted temporarily, in order:  
1) Disease onset date 2) Disease diagnosis date  
3) Lab result collection date 4) Report date to SNHD.

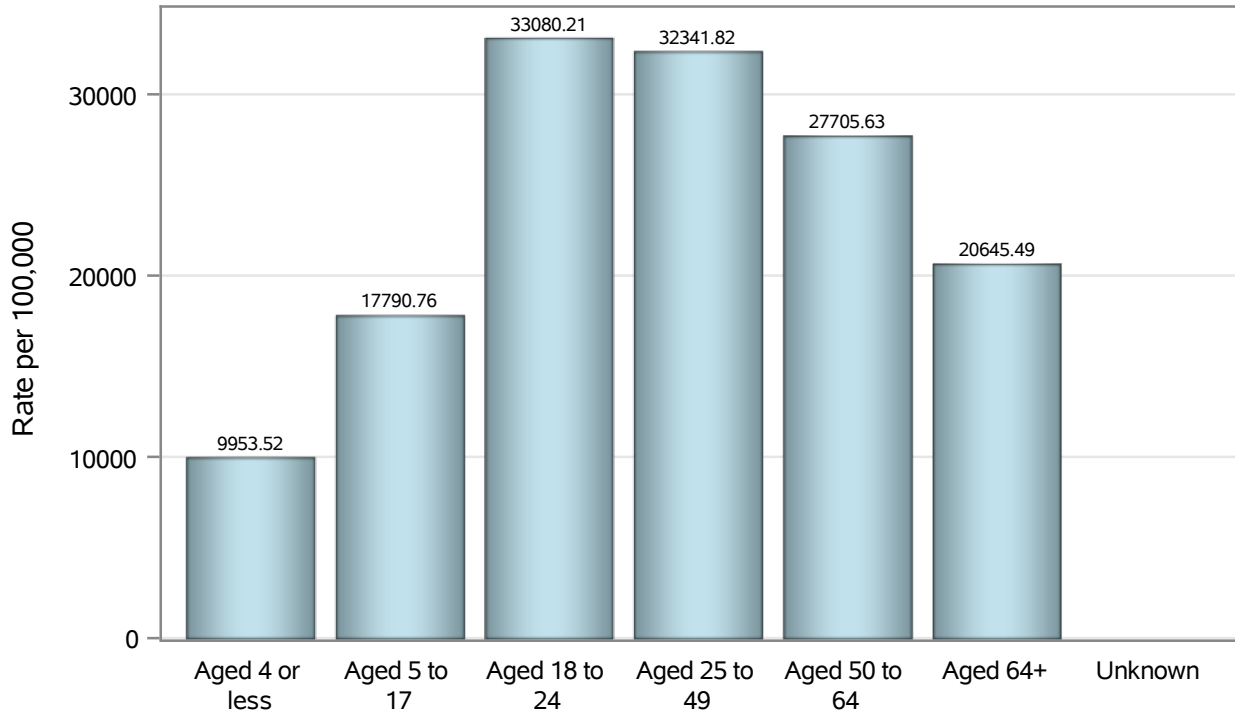
---

**Investigations are ongoing; data are subject to change.  
Reporting through 23MAY2022**

**North Las Vegas zip codes include 89030, 89031, 89032, 89033, 89036, 89081, 89084, 89085, 89086, 89087.**



### Case Age Rates in North Las Vegas

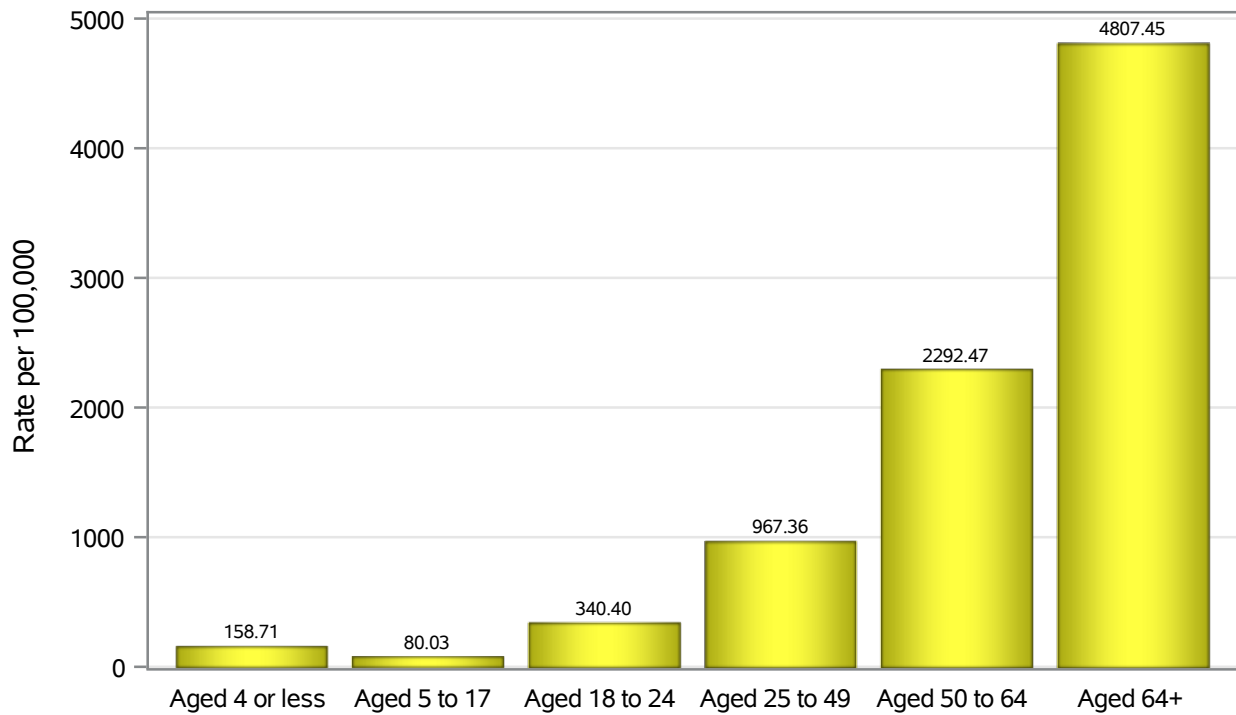


Investigations are ongoing; data are subject to change.

Reporting through 23MAY2022

North Las Vegas zip codes include 89030, 89031, 89032, 89033, 89036, 89081, 89084, 89085, 89086, 89087.

### Hospitalization Age Rates in North Las Vegas

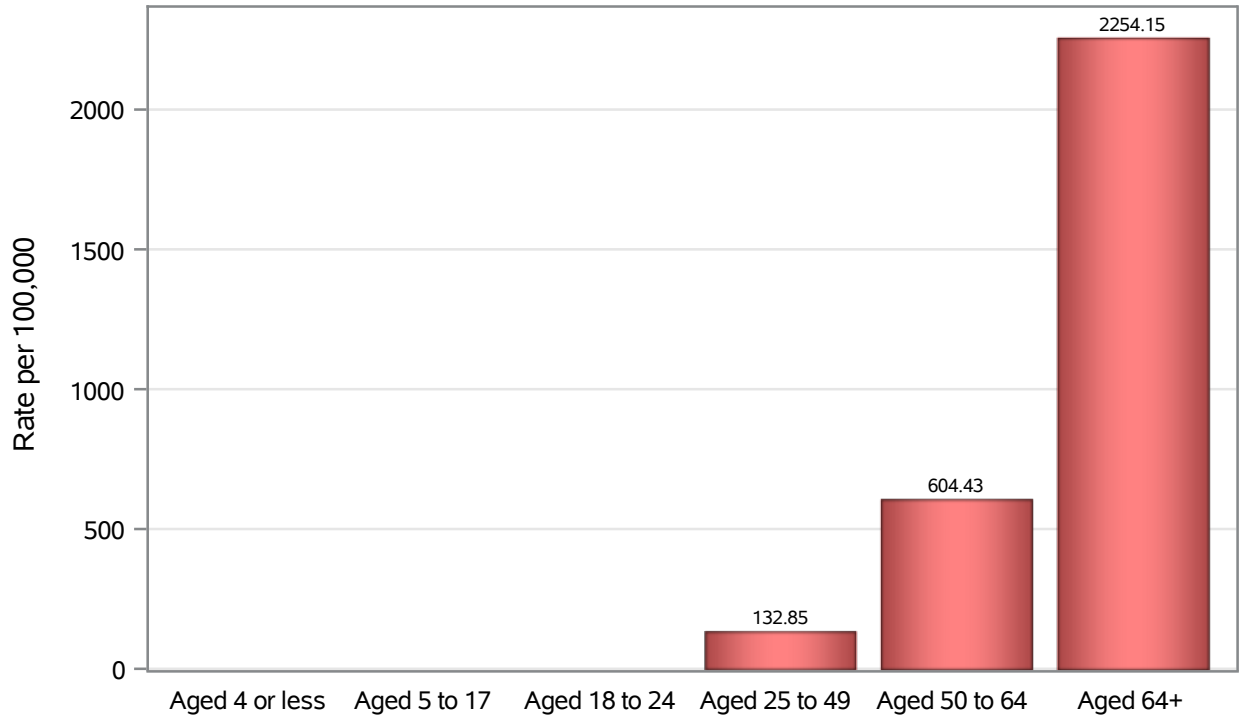


Investigations are ongoing; data are subject to change.

Reporting through 23MAY2022

North Las Vegas zip codes include 89030, 89031, 89032, 89033, 89036, 89081, 89084, 89085, 89086, 89087.

### Death Age Rates in North Las Vegas



Investigations are ongoing; data are subject to change.

Reporting through 23MAY2022

North Las Vegas zip codes include 89030, 89031, 89032, 89033, 89036, 89081, 89084, 89085, 89086, 89087.

**Table 5: Age and COVID19 in North Las Vegas**

Case Status	Age Categories	N	%	Population	Rate per 100,000
Cases	Aged 4 or less	1756	2.9	17,642	9953.5
	Aged 5 to 17	8892	14.8	49,981	17791
	Aged 18 to 24	7580	12.6	22,914	33080
	Aged 25 to 49	26780	44.6	82,803	32342
	Aged 50 to 64	10176	16.9	36,729	27706
	Aged 64+	4900	8.2	23,734	20645
	Unknown	10	0.0	.	.
Hospitalizations	Aged 4 or less	28	1.0	17,642	158.71
	Aged 5 to 17	40	1.4	49,981	80.03
	Aged 18 to 24	78	2.7	22,914	340.40
	Aged 25 to 49	801	27.3	82,803	967.36
	Aged 50 to 64	842	28.7	36,729	2292.5
	Aged 64+	1141	38.9	23,734	4807.4
	Deaths	Aged 4 or less	1	0.1	17,642
Aged 5 to 17		2	0.2	49,981	.
Aged 18 to 24		2	0.2	22,914	.
Aged 25 to 49		110	12.6	82,803	132.85
Aged 50 to 64		222	25.5	36,729	604.43
Aged 64+		535	61.4	23,734	2254.2

Note1: Population data source for calculating rate estimates: U.S. Census Bureau, ACS 5-year estimate.

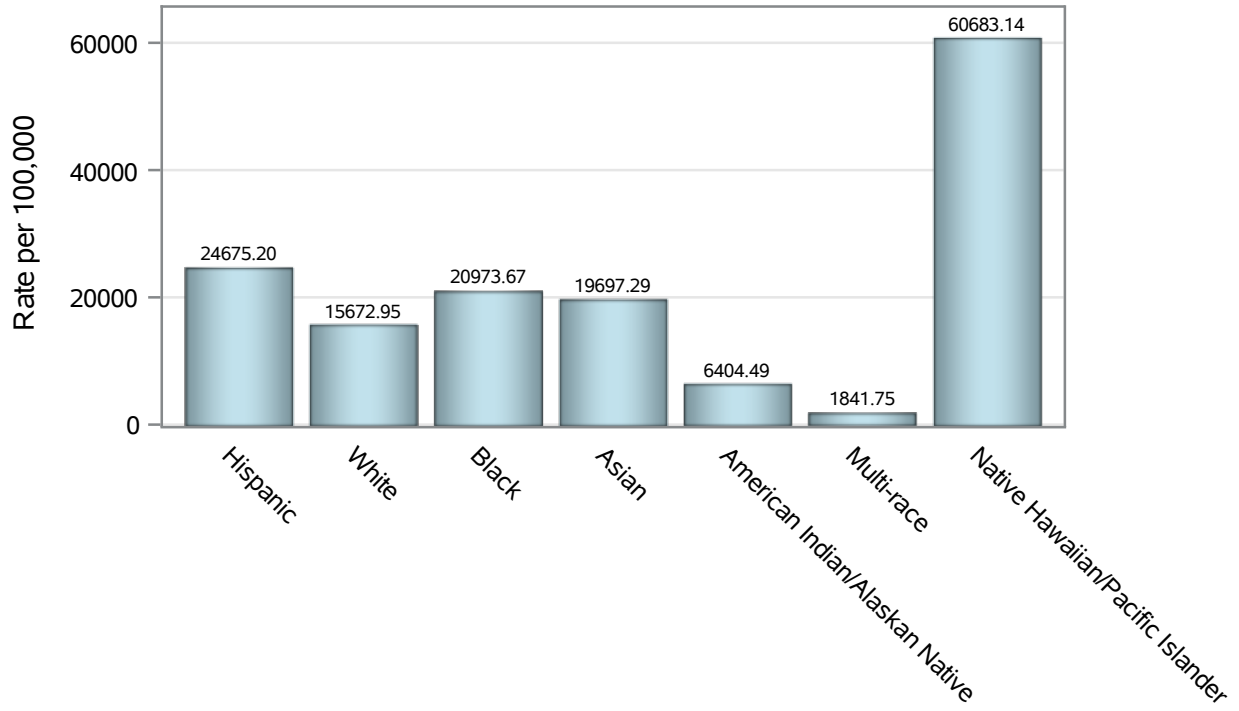
Note2: Rates for categories with fewer than 12 cases are suppressed due to high relative standard error.

Note3: Hospitalizations are regardless of deceased status; Deaths are regardless of hospitalization status

**Investigations are ongoing; data are subject to change.  
Reporting through 23MAY2022**

**North Las Vegas zip codes include 89030, 89031, 89032, 89033, 89036, 89081, 89084, 89085, 89086, 89087.**

### Case Race/Ethnicity Rates in North Las Vegas

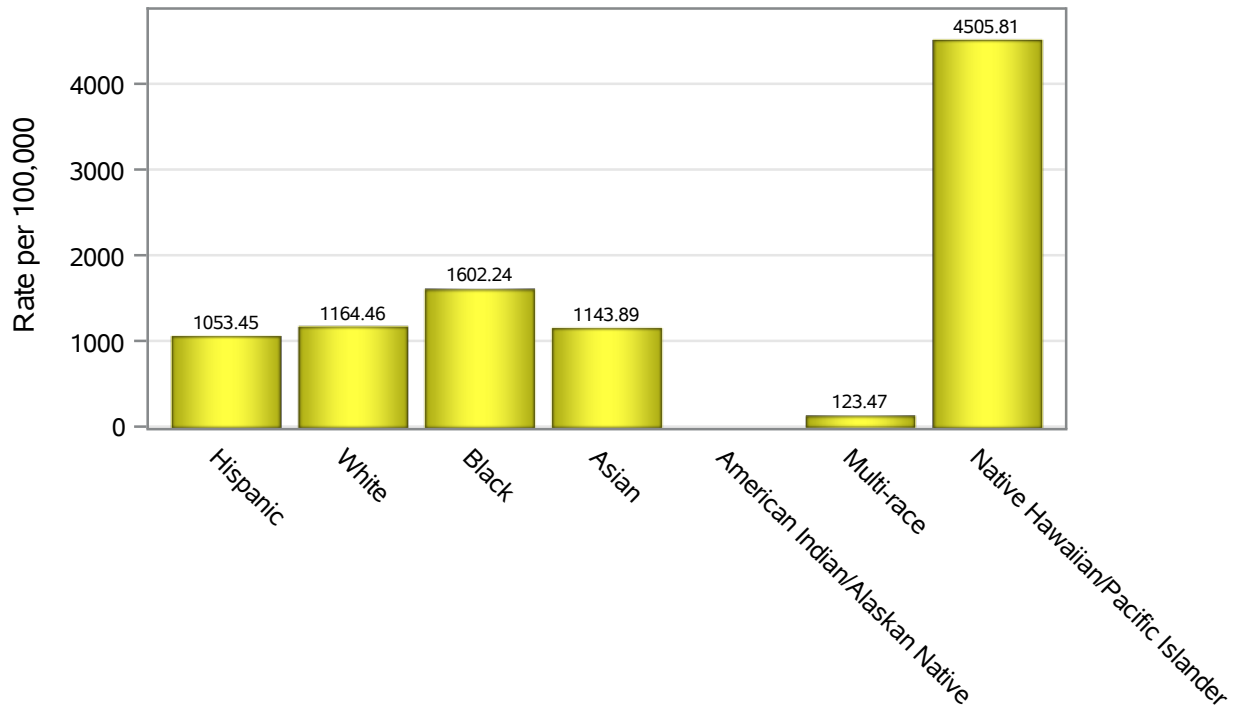


Investigations are ongoing; data are subject to change.

Reporting through 23MAY2022

North Las Vegas zip codes include 89030, 89031, 89032, 89033, 89036, 89081, 89084, 89085, 89086, 89087.

### Hospitalization Race/Ethnicity Rates in North Las Vegas

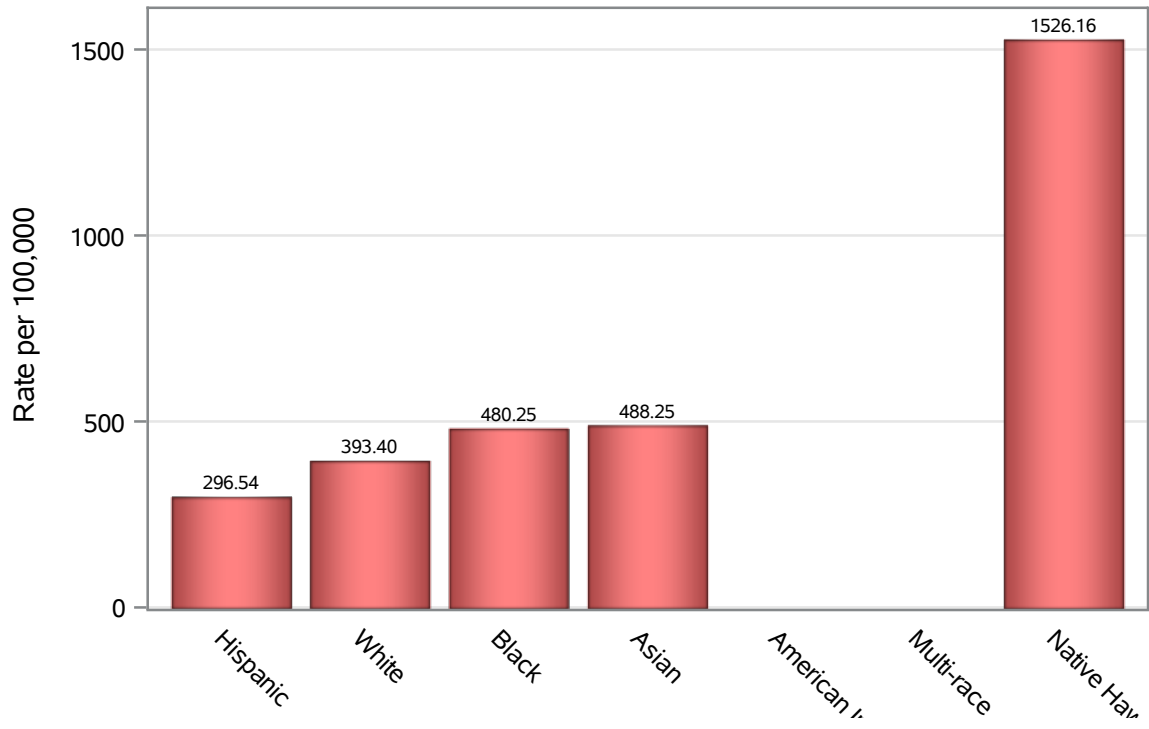


Investigations are ongoing; data are subject to change.

Reporting through 23MAY2022

North Las Vegas zip codes include 89030, 89031, 89032, 89033, 89036, 89081, 89084, 89085, 89086, 89087.

### Death Race/Ethnicity Rates in North Las Vegas



Investigations are ongoing; data are subject to change.

Reporting through 23MAY2022

North Las Vegas zip codes include 89030, 89031, 89032, 89033, 89036, 89081, 89084, 89085, 89086, 89087.

**Table 6: Race/Ethnicity and COVID19 in North Las Vegas**

Case Status	Race Ethnicity Categories	N	%	Population	Rate per 100,000
Cases	Hispanic	23798	39.6	96,445	24675
	White	9960	16.6	63,549	15673
	Black	9870	16.4	47,059	20974
	Asian	2824	4.7	14,337	19697
	American Indian/Alaskan Native	57	0.1	890	6404.5
	Multi-race	179	0.3	9,719	1841.8
	Native Hawaiian/Pacific Islander	835	1.4	1,376	60683
	Unknown	12571	20.9	.	.
Hospitalizations	Hispanic	1016	34.7	96,445	1053.5
	White	740	25.3	63,549	1164.5
	Black	754	25.7	47,059	1602.2
	Asian	164	5.6	14,337	1143.9
	American Indian/Alaskan Native	11	0.4	890	.
	Multi-race	12	0.4	9,719	123.47
	Native Hawaiian/Pacific Islander	62	2.1	1,376	4505.8
	Unknown	171	5.8	.	.
Deaths	Hispanic	286	32.8	96,445	296.54
	White	250	28.7	63,549	393.40
	Black	226	25.9	47,059	480.25
	Asian	70	8.0	14,337	488.25
	American Indian/Alaskan Native	6	0.7	890	.
	Multi-race	6	0.7	9,719	.
	Native Hawaiian/Pacific Islander	21	2.4	1,376	1526.2
	Unknown	7	0.8	.	.

Note1: Population data source for calculating rate estimates: U.S. Census Bureau, ACS 5-year estimate.

Note2: Rates for categories with fewer than 12 cases are suppressed due to high relative standard error.

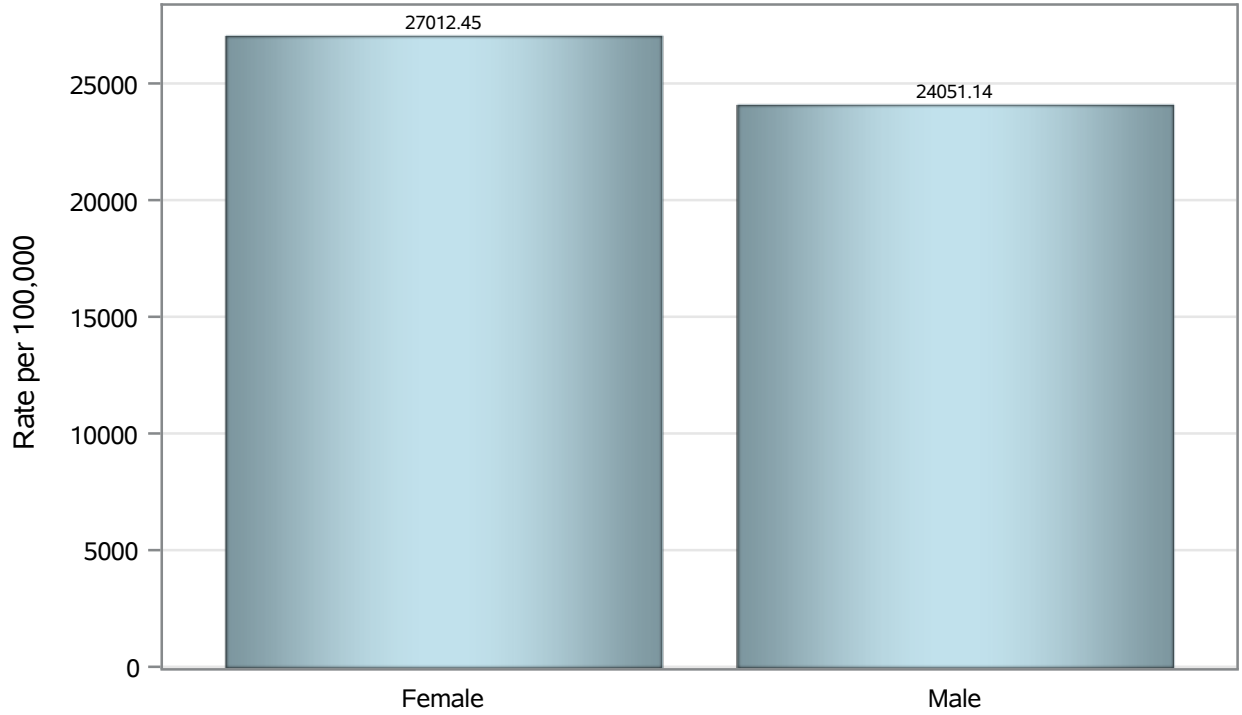
Note3: Hospitalizations are regardless of deceased status; Deaths are regardless of hospitalization status

**Investigations are ongoing; data are subject to change.  
Reporting through 23MAY2022**

**North Las Vegas zip codes include 89030, 89031, 89032, 89033, 89036, 89081, 89084, 89085, 89086, 89087.**



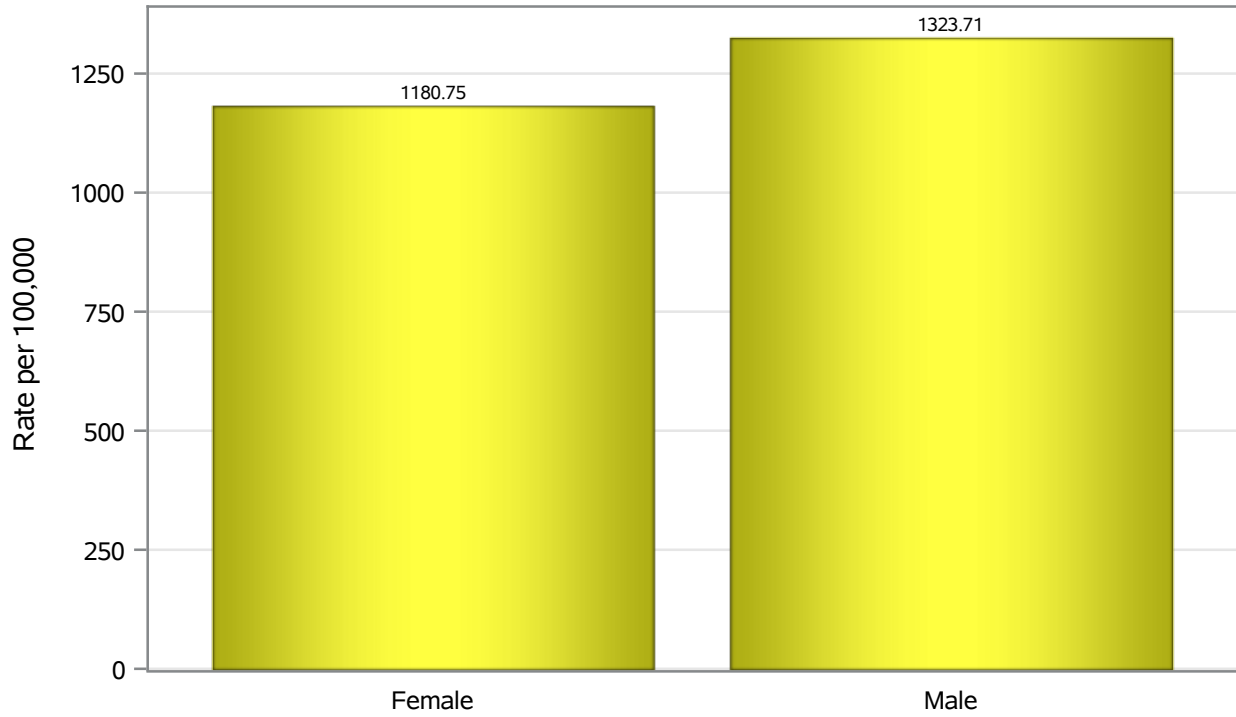
### Case Birth Sex Rates in North Las Vegas



Investigations are ongoing; data are subject to change.  
Reporting through 23MAY2022

North Las Vegas zip codes include 89030, 89031, 89032, 89033, 89036, 89081, 89084, 89085, 89086, 89087.

### Hospitalization Birth Sex Rates in North Las Vegas

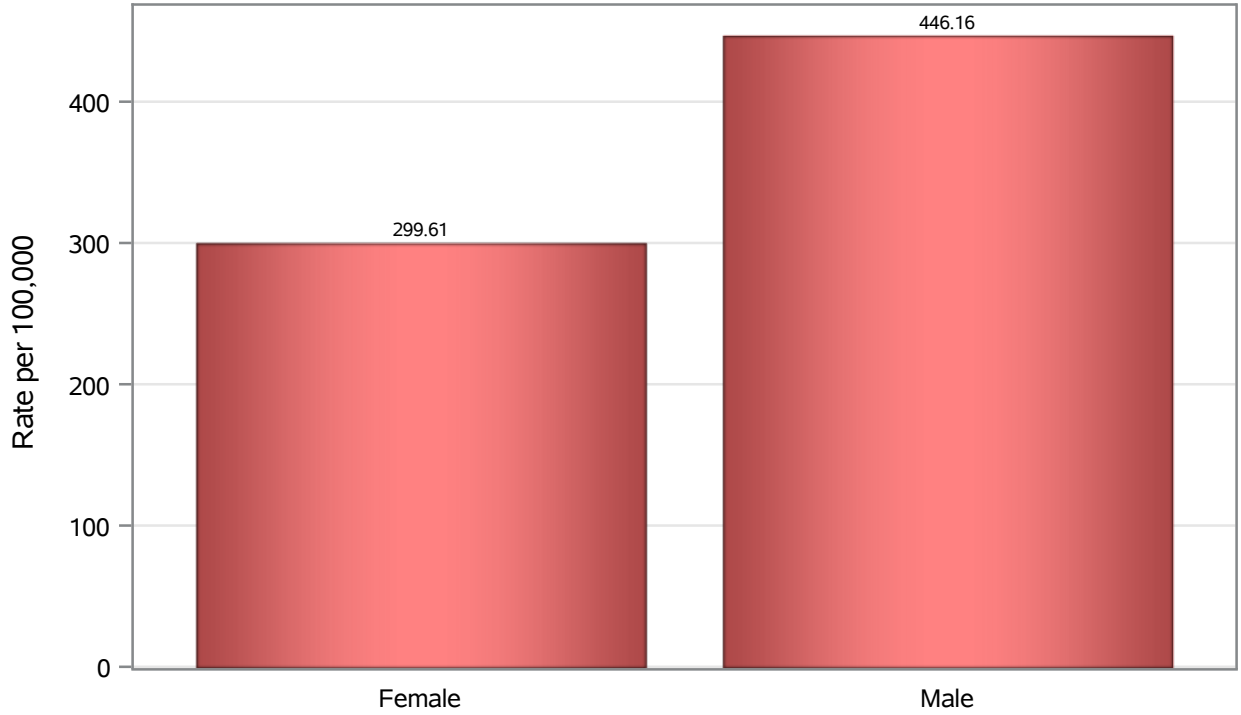


Investigations are ongoing; data are subject to change.

Reporting through 23MAY2022

North Las Vegas zip codes include 89030, 89031, 89032, 89033, 89036, 89081, 89084, 89085, 89086, 89087.

### Death Birth Sex Rates in North Las Vegas



Investigations are ongoing; data are subject to change.

Reporting through 23MAY2022

North Las Vegas zip codes include 89030, 89031, 89032, 89033, 89036, 89081, 89084, 89085, 89086, 89087.

**Table 7: Birth Sex and COVID19 in North Las Vegas**

Case Status	Birth Sex Categories	N	%	Population	Rate per 100,000
Cases	Female	32097	53.4	118823	27012
	Male	27654	46.0	114980	24051
	Unknown	343	0.6	.	.
Hospitalizations	Female	1403	47.9	118823	1180.7
	Male	1522	51.9	114980	1323.7
	Unknown	5	0.2	.	.
Deaths	Female	356	40.8	118823	299.61
	Male	513	58.8	114980	446.16
	Unknown	3	0.3	.	.

Note1: Population data source for calculating rate estimates: U.S. Census Bureau, ACS 5-year estimate.

Note2: Rates for categories with fewer than 12 cases are suppressed due to high relative standard error.

Note3: Hospitalizations are regardless of deceased status; Deaths are regardless of hospitalization status

**Investigations are ongoing; data are subject to change.  
Reporting through 23MAY2022**

**North Las Vegas zip codes include 89030, 89031, 89032, 89033, 89036, 89081, 89084, 89085, 89086, 89087.**