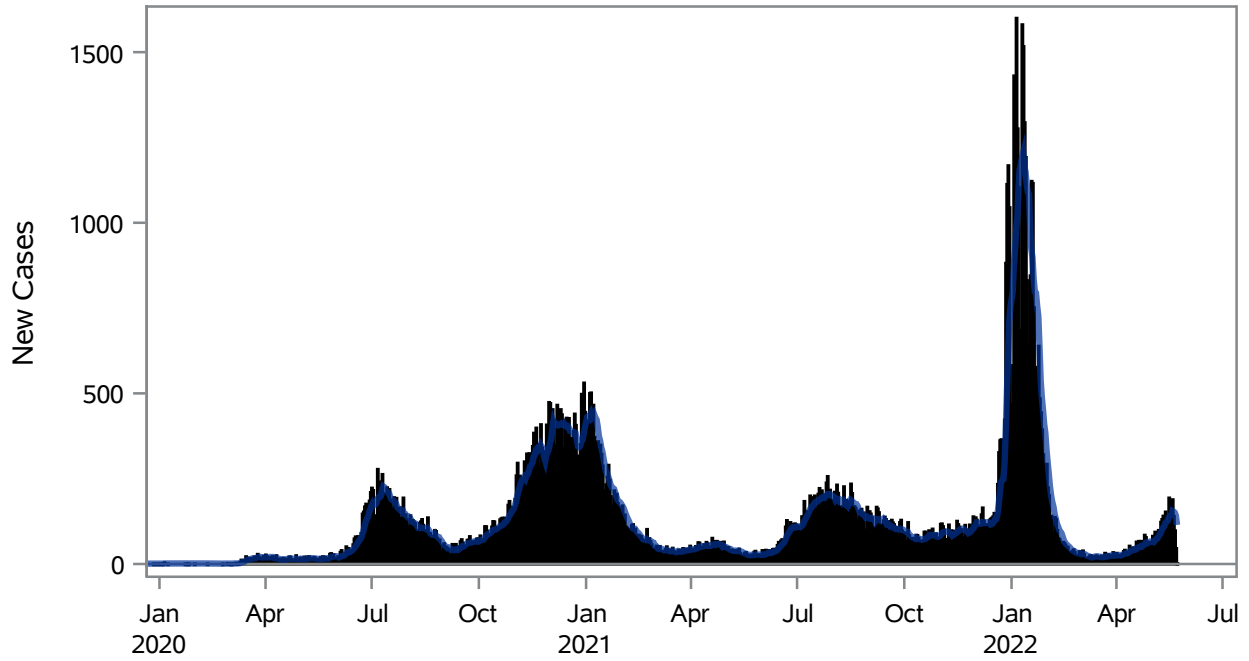


COVID19 Cases for Henderson, 7-Day Moving Average



■ New Cases — 7-Day Moving Average

Investigations are ongoing; data are subject to change.

Reporting through 23MAY2022

Henderson zip codes include 89002, 89011, 89012, 89014, 89015, 89044, 89052, 89074, 89119, 89120, 89122, 89123, 89124, 89183.

Table 1: New COVID19 Cases and 7-Day Moving Average in Henderson, Previous Two Weeks

Date (Daily)	New Cases	7-Day Moving Average
10MAY2022	131	99.86
11MAY2022	141	106.57
12MAY2022	112	110.00
13MAY2022	153	120.57
14MAY2022	119	123.43
15MAY2022	107	126.57
16MAY2022	194	136.71
17MAY2022	157	140.43
18MAY2022	169	144.43
19MAY2022	189	155.43
20MAY2022	140	153.57
21MAY2022	98	150.57

Note1: Event Date is calculated as follows based on completed information:

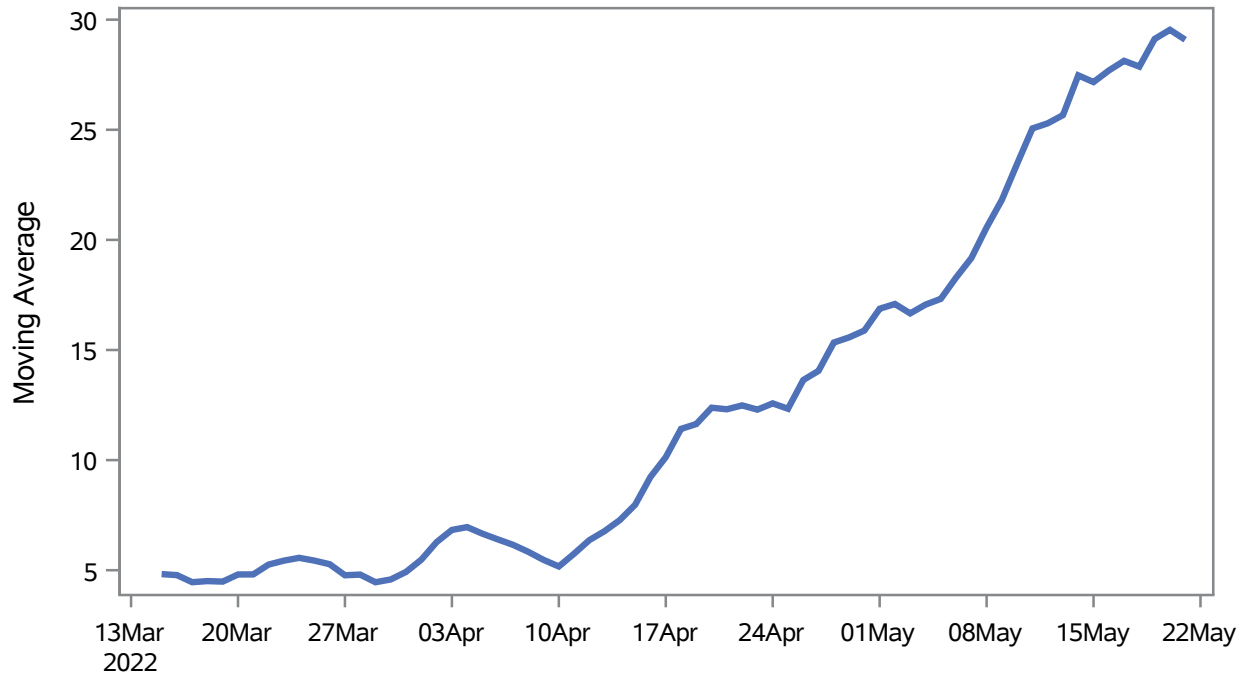
1) Disease onset date 2) Disease diagnosis date 3) Lab result collection date 4) Report date to SNHD.

Investigations are ongoing; data are subject to change.

Reporting through 23MAY2022

Henderson zip codes include 89002, 89011, 89012, 89014, 89015, 89044, 89052, 89074, 89119, 89120, 89122, 89123, 89124, 89183.

Percent of People Receiving COVID-19 Viral Tests Who Have Positive Results in Henderson



Investigations are ongoing; data are subject to change.
Reporting through 23MAY2022

Henderson zip codes include 89002, 89011, 89012, 89014, 89015, 89044, 89052, 89074, 89119, 89120, 89122, 89123, 89124, 89183.

Table 2: Percent of People Receiving COVID-19 Viral Tests Who Have Positive Results in Henderson

Collection Date	Positive	Negative	Equivocal	Total	% Positivity	7-Day Moving Average
07MAY2022	62	206		268	23.13	19.2
08MAY2022	73	171		244	29.92	20.6
09MAY2022	125	339	2	466	26.82	21.8
10MAY2022	116	310	1	427	27.17	23.5
11MAY2022	136	335		471	28.87	25.1
12MAY2022	87	339		426	20.42	25.3
13MAY2022	101	331	1	433	23.33	25.7
14MAY2022	118	211	1	330	35.76	27.5
15MAY2022	92	238	1	331	27.79	27.2
16MAY2022	168	382	1	551	30.49	27.7
17MAY2022	150	345	1	496	30.24	28.1
18MAY2022	149	401	1	551	27.04	27.9
19MAY2022	194	468	2	664	29.22	29.1
20MAY2022	144	404	1	549	26.23	29.5
21MAY2022	105	217		322	32.61	29.1

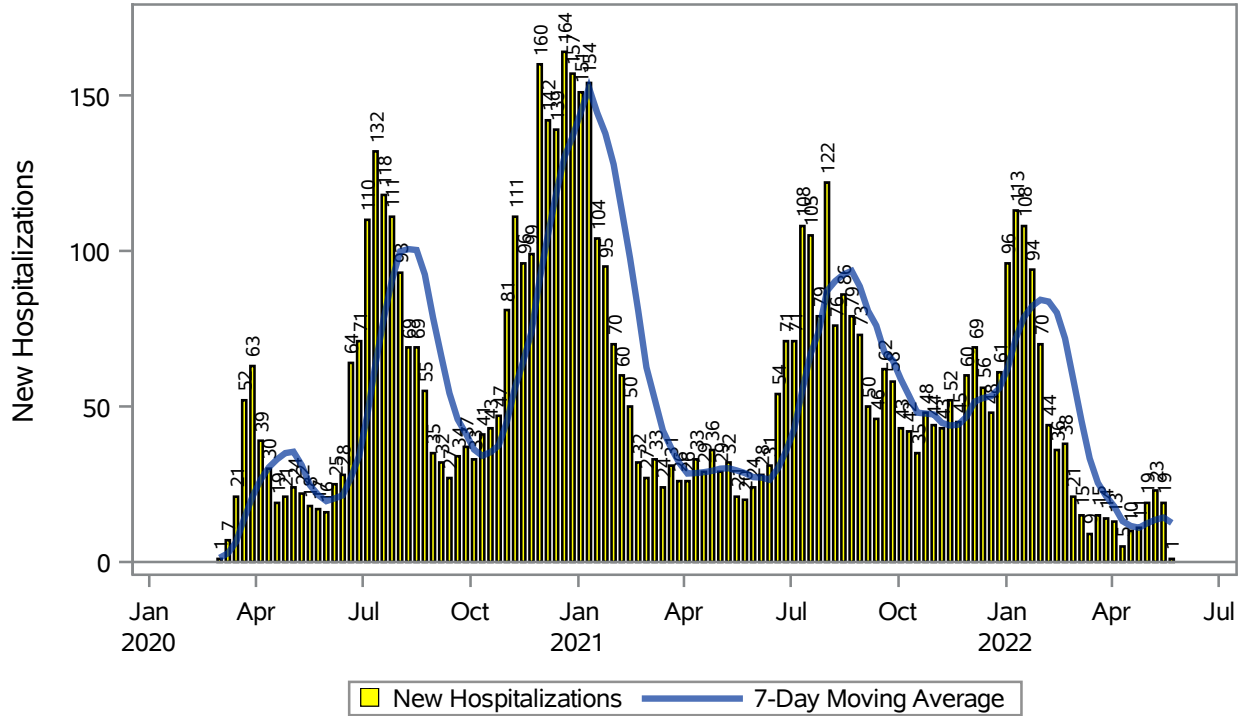
Note: Testing Data includes a 3 day delay

Investigations are ongoing; data are subject to change.

Reporting through 23MAY2022

Henderson zip codes include 89002, 89011, 89012, 89014, 89015, 89044, 89052, 89074, 89119, 89120, 89122, 89123, 89124, 89183.

COVID19 Hospitalizations for Henderson, 7-Day Moving Average



Investigations are ongoing; data are subject to change.

Reporting through 23MAY2022

Henderson zip codes include 89002, 89011, 89012, 89014, 89015, 89044, 89052, 89074, 89119, 89120, 89122, 89123, 89124, 89183.

Table 3: New COVID19-Related Hospitalizations and 7-Day Moving Average in Henderson, previous month

Week	Hospitalizations	7-Day Moving Average
24APR2022	11	11.0
01MAY2022	19	12.4
08MAY2022	23	13.6
15MAY2022	19	14.3
22MAY2022	1	12.6

Note1: Admission Date is calculated as follows based on completed information:
A) COVID19 Case is hospitalized B) COVID19 Case has a hospital admission date.

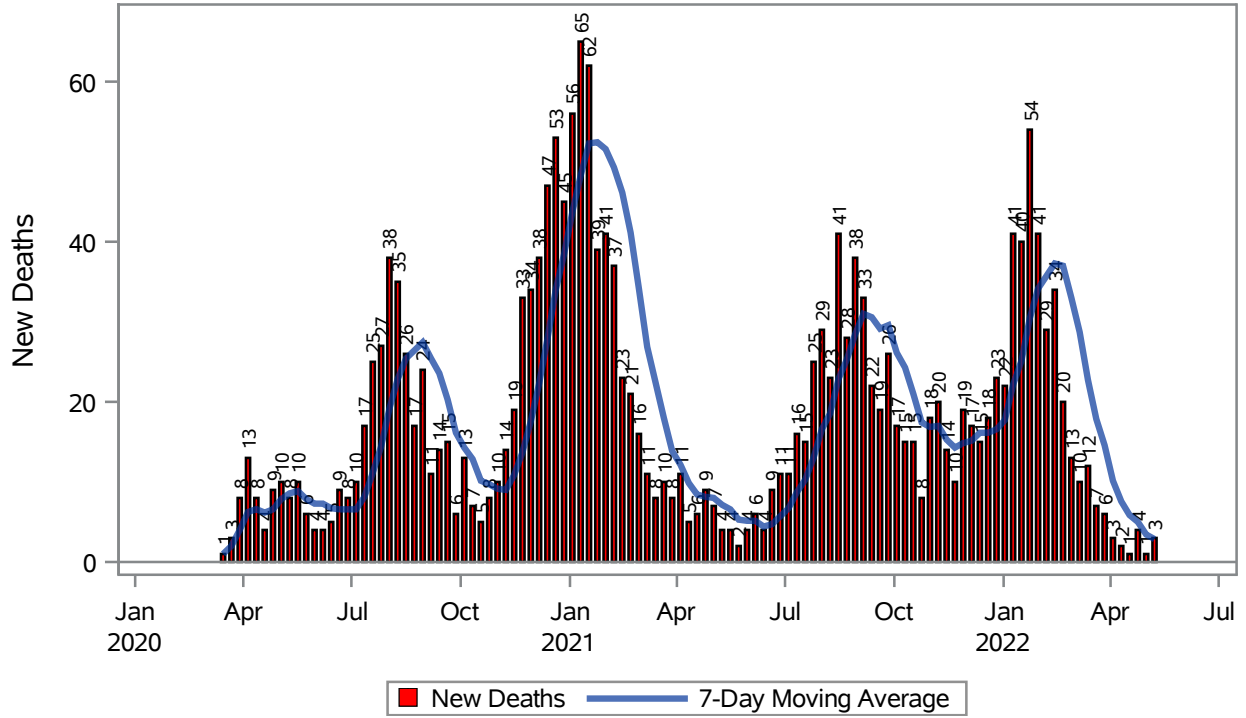
If admission date is missing, then the following is substituted temporarily, in order:
1) Disease onset date 2) Disease diagnosis date 3) Lab result collection date 4) Report date to SNHD.

Investigations are ongoing; data are subject to change.

Reporting through 23MAY2022

Henderson zip codes include 89002, 89011, 89012, 89014, 89015, 89044, 89052, 89074, 89119, 89120, 89122, 89123, 89124, 89183.

COVID19 Deaths for Henderson, 7-Day Moving Average



Investigations are ongoing; data are subject to change.

Reporting through 23MAY2022

Henderson zip codes include 89002, 89011, 89012, 89014, 89015, 89044, 89052, 89074, 89119, 89120, 89122, 89123, 89124, 89183.

Table 4: New COVID19-Related Deaths and 7-Day Moving Average in Henderson, Previous Month

Week	Deaths	7-Day Moving Average
24APR2022	4	5.00
01MAY2022	1	3.43
08MAY2022	3	2.86

Note1: Date of Death is calculated as follows based on completed information:
A) COVID19 Case is reported as deceased B) COVID19 Case has a reported date of death.

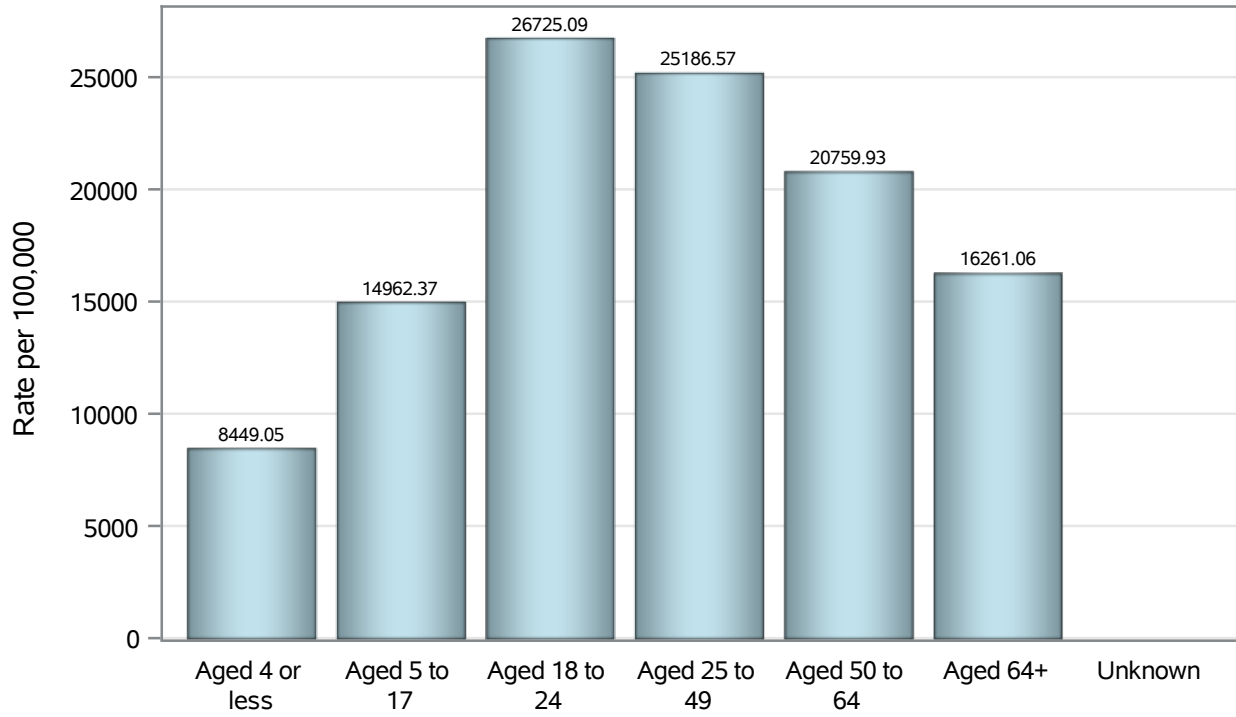
If date of death is missing, then the following is substituted temporarily, in order:
1) Disease onset date 2) Disease diagnosis date
3) Lab result collection date 4) Report date to SNHD.

Investigations are ongoing; data are subject to change.

Reporting through 23MAY2022

Henderson zip codes include 89002, 89011, 89012, 89014, 89015, 89044, 89052, 89074, 89119, 89120, 89122, 89123, 89124, 89183.

Case Age Rates in Henderson

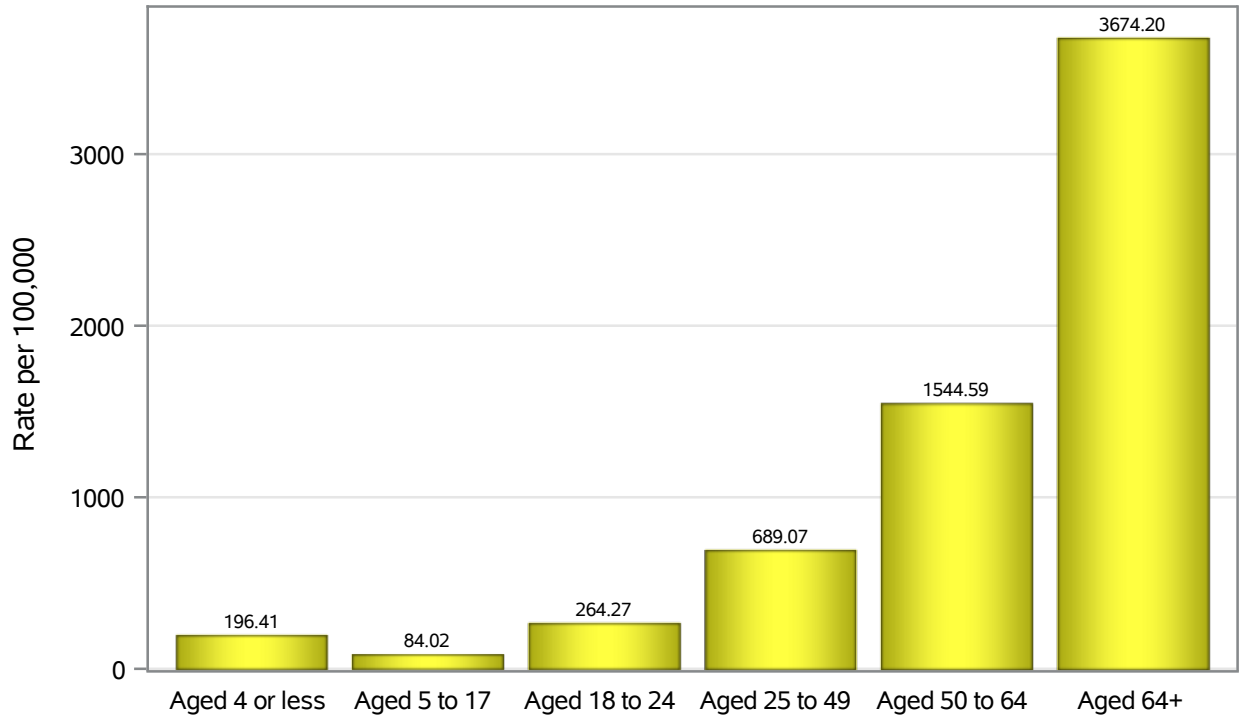


Investigations are ongoing; data are subject to change.

Reporting through 23MAY2022

Henderson zip codes include 89002, 89011, 89012, 89014, 89015, 89044, 89052, 89074, 89119, 89120, 89122, 89123, 89124, 89183.

Hospitalization Age Rates in Henderson

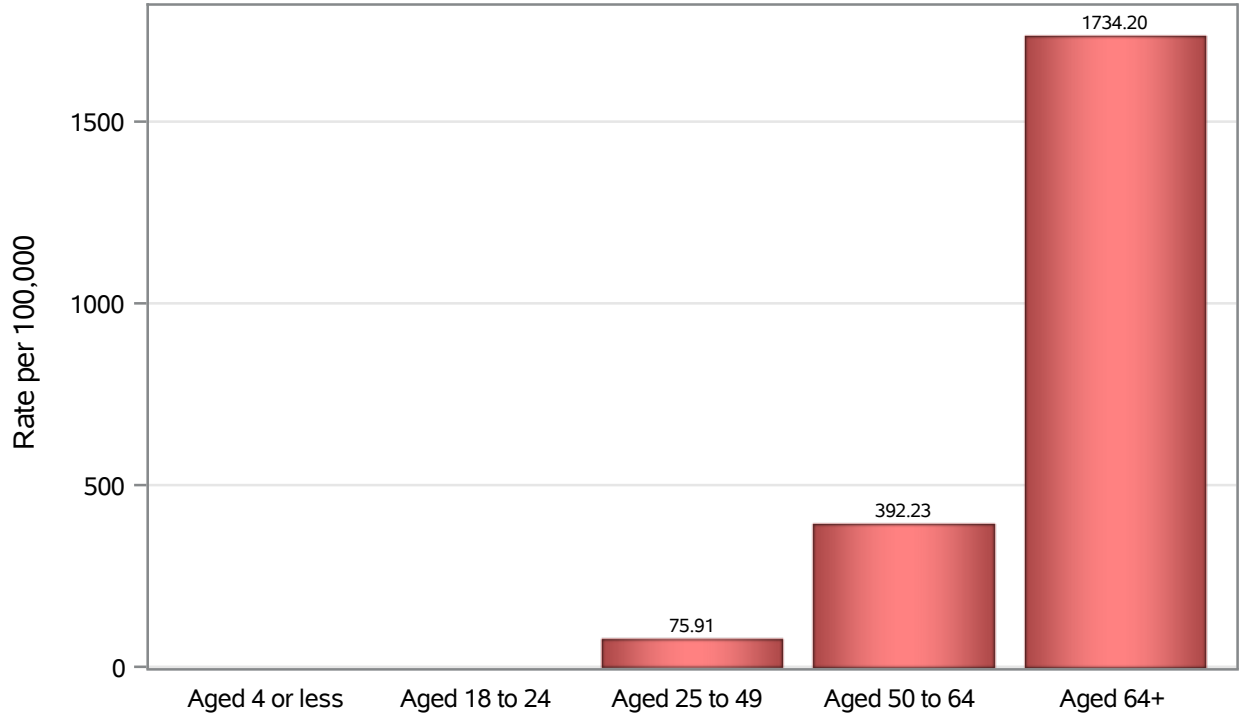


Investigations are ongoing; data are subject to change.

Reporting through 23MAY2022

Henderson zip codes include 89002, 89011, 89012, 89014, 89015, 89044, 89052, 89074, 89119, 89120, 89122, 89123, 89124, 89183.

Death Age Rates in Henderson



Investigations are ongoing; data are subject to change.

Reporting through 23MAY2022

Henderson zip codes include 89002, 89011, 89012, 89014, 89015, 89044, 89052, 89074, 89119, 89120, 89122, 89123, 89124, 89183.

Table 5: Age and COVID19 in Henderson

Case Status	Age Categories	N	%	Population	Rate per 100,000
Cases	Aged 4 or less	2452	2.2	29,021	8449.1
	Aged 5 to 17	12288	11.3	82,126	14962
	Aged 18 to 24	11832	10.8	44,273	26725
	Aged 25 to 49	47115	43.2	187064	25187
	Aged 50 to 64	21330	19.6	102746	20760
	Aged 64+	14065	12.9	86,495	16261
	Unknown	22	0.0	.	.
Hospitalizations	Aged 4 or less	57	0.9	29,021	196.41
	Aged 5 to 17	69	1.1	82,126	84.02
	Aged 18 to 24	117	1.9	44,273	264.27
	Aged 25 to 49	1289	20.5	187064	689.07
	Aged 50 to 64	1587	25.2	102746	1544.6
	Aged 64+	3178	50.5	86,495	3674.2
Deaths	Aged 4 or less	1	0.0	29,021	.
	Aged 18 to 24	3	0.1	44,273	.
	Aged 25 to 49	142	6.9	187064	75.91
	Aged 50 to 64	403	19.7	102746	392.23
	Aged 64+	1500	73.2	86,495	1734.2

Note1: Population data source for calculating rate estimates: U.S. Census Bureau, ACS 5-year estimate.

Note2: Rates for categories with fewer than 12 cases are suppressed due to high relative standard error.

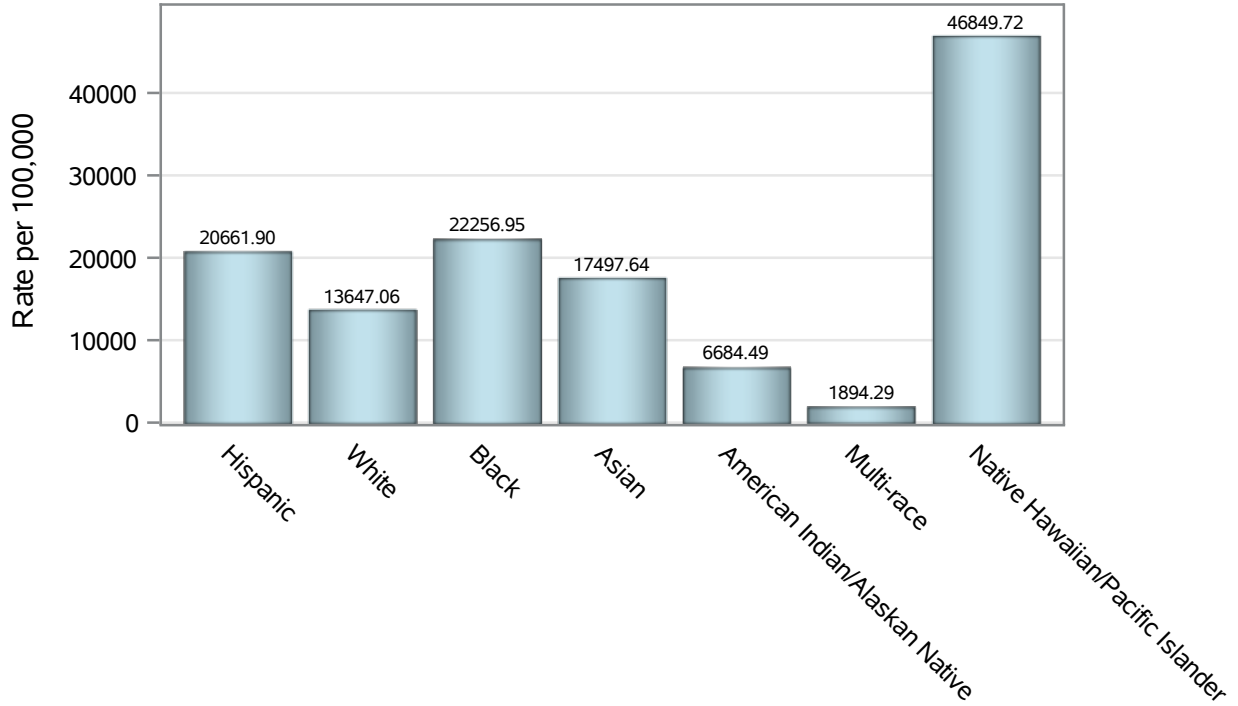
Note3: Hospitalizations are regardless of deceased status; Deaths are regardless of hospitalization status

Investigations are ongoing; data are subject to change.

Reporting through 23MAY2022

Henderson zip codes include 89002, 89011, 89012, 89014, 89015, 89044, 89052, 89074, 89119, 89120, 89122, 89123, 89124, 89183.

Case Race/Ethnicity Rates in Henderson

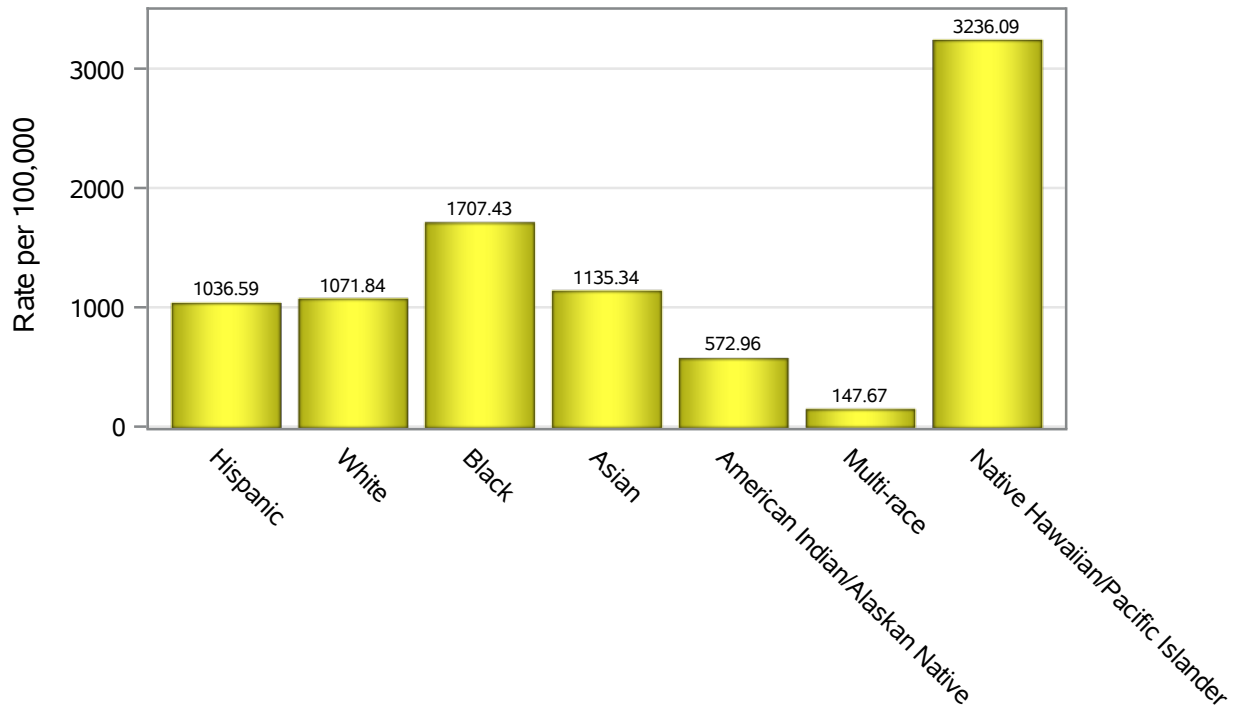


Investigations are ongoing; data are subject to change.

Reporting through 23MAY2022

Henderson zip codes include 89002, 89011, 89012, 89014, 89015, 89044, 89052, 89074, 89119, 89120, 89122, 89123, 89124, 89183.

Hospitalization Race/Ethnicity Rates in Henderson

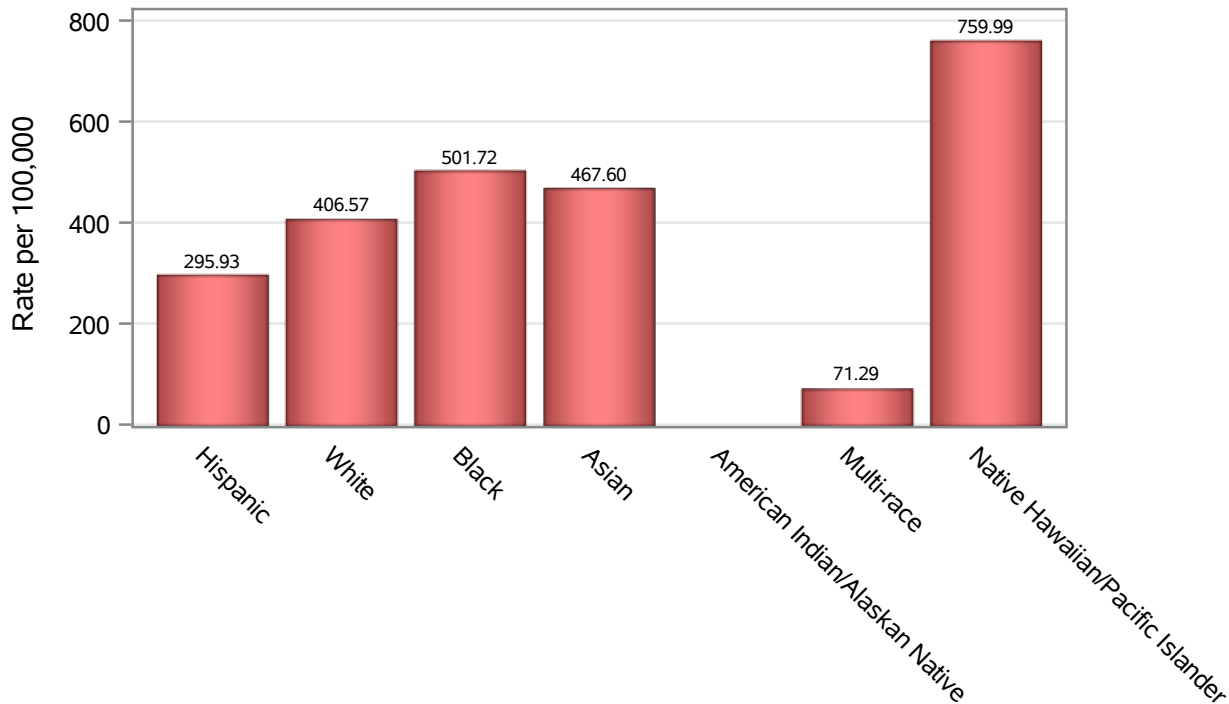


Investigations are ongoing; data are subject to change.

Reporting through 23MAY2022

Henderson zip codes include 89002, 89011, 89012, 89014, 89015, 89044, 89052, 89074, 89119, 89120, 89122, 89123, 89124, 89183.

Death Race/Ethnicity Rates in Henderson



Investigations are ongoing; data are subject to change.

Reporting through 23MAY2022

Henderson zip codes include 89002, 89011, 89012, 89014, 89015, 89044, 89052, 89074, 89119, 89120, 89122, 89123, 89124, 89183.

Table 6: Race/Ethnicity and COVID19 in Henderson

Case Status	Race Ethnicity Categories	N	%	Population	Rate per 100,000
Cases	Hispanic	25135	23.0	121649	20662
	White	39776	36.5	291462	13647
	Black	8473	7.8	38,069	22257
	Asian	9093	8.3	51,967	17498
	American Indian/Alaskan Native	175	0.2	2,618	6684.5
	Multi-race	372	0.3	19,638	1894.3
	Native Hawaiian/Pacific Islander	1911	1.8	4,079	46850
	Unknown	24169	22.2	.	.
Hospitalizations	Hispanic	1261	20.0	121649	1036.6
	White	3124	49.6	291462	1071.8
	Black	650	10.3	38,069	1707.4
	Asian	590	9.4	51,967	1135.3
	American Indian/Alaskan Native	15	0.2	2,618	572.96
	Multi-race	29	0.5	19,638	147.67
	Native Hawaiian/Pacific Islander	132	2.1	4,079	3236.1
	Unknown	496	7.9	.	.
Deaths	Hispanic	360	17.6	121649	295.93
	White	1185	57.8	291462	406.57
	Black	191	9.3	38,069	501.72
	Asian	243	11.9	51,967	467.60
	American Indian/Alaskan Native	8	0.4	2,618	.
	Multi-race	14	0.7	19,638	71.29
	Native Hawaiian/Pacific Islander	31	1.5	4,079	759.99
	Unknown	17	0.8	.	.

Note1: Population data source for calculating rate estimates: U.S. Census Bureau, ACS 5-year estimate.

Note2: Rates for categories with fewer than 12 cases are suppressed due to high relative standard error.

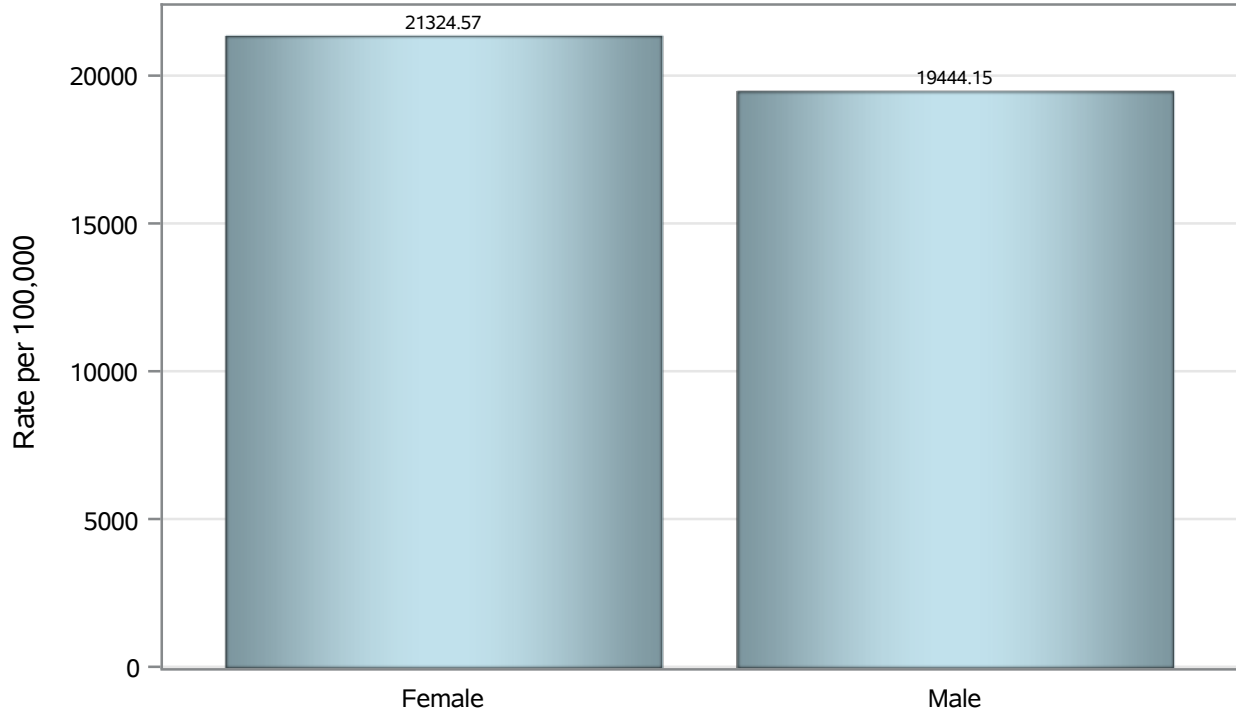
Note3: Hospitalizations are regardless of deceased status; Deaths are regardless of hospitalization status

Investigations are ongoing; data are subject to change.

Reporting through 23MAY2022

Henderson zip codes include 89002, 89011, 89012, 89014, 89015, 89044, 89052, 89074, 89119, 89120, 89122, 89123, 89124, 89183.

Case Birth Sex Rates in Henderson

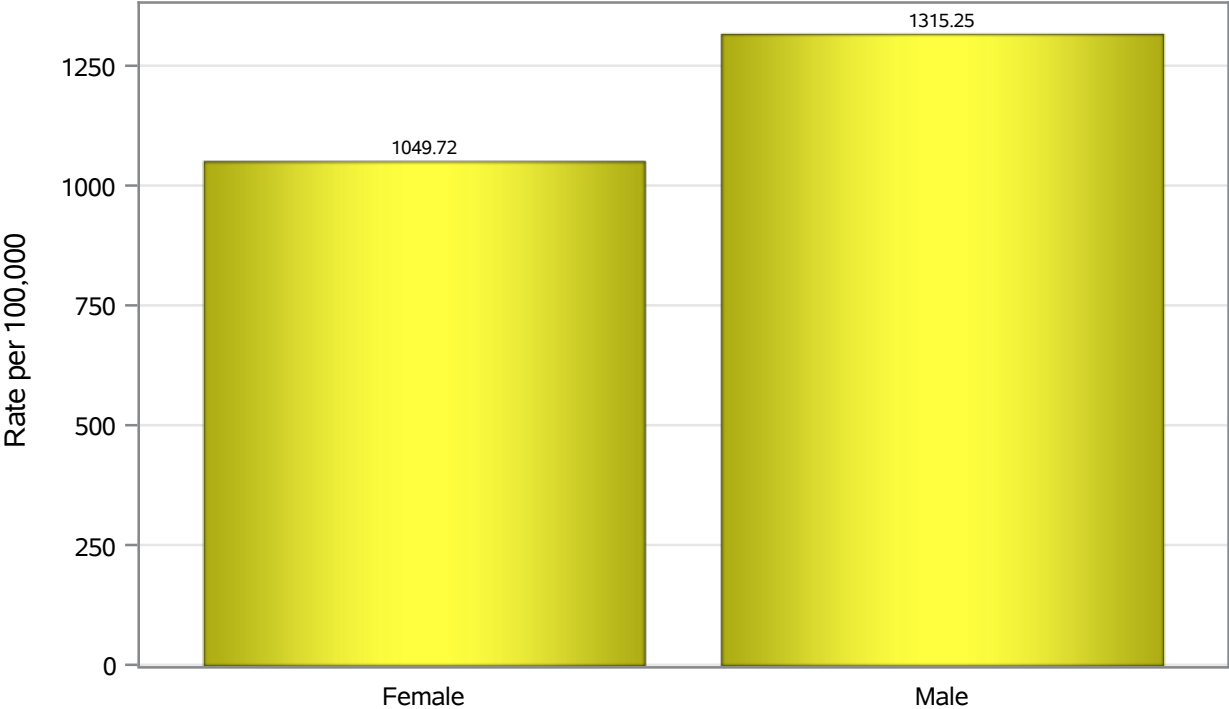


Investigations are ongoing; data are subject to change.

Reporting through 23MAY2022

Henderson zip codes include 89002, 89011, 89012, 89014, 89015, 89044, 89052, 89074, 89119, 89120, 89122, 89123, 89124, 89183.

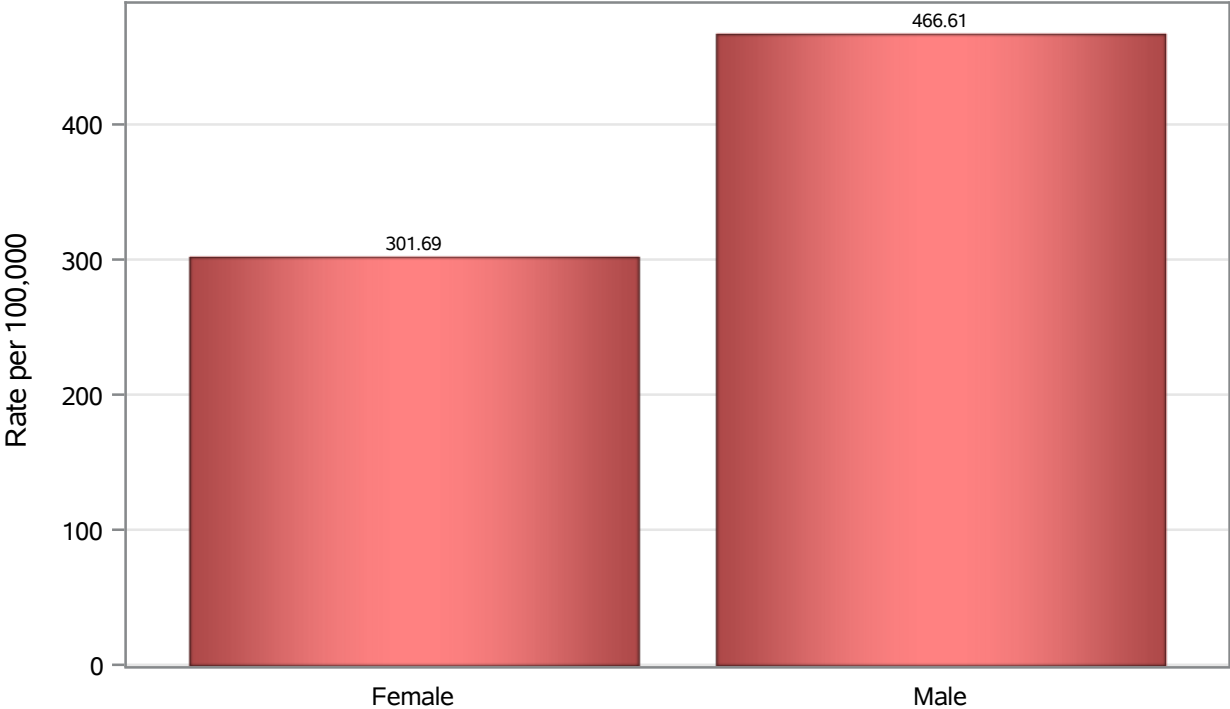
Hospitalization Birth Sex Rates in Henderson



Investigations are ongoing; data are subject to change.
Reporting through 23MAY2022

Henderson zip codes include 89002, 89011, 89012, 89014, 89015, 89044, 89052, 89074, 89119, 89120, 89122, 89123, 89124, 89183.

Death Birth Sex Rates in Henderson



Investigations are ongoing; data are subject to change.
Reporting through 23MAY2022

Henderson zip codes include 89002, 89011, 89012, 89014, 89015, 89044, 89052, 89074, 89119, 89120, 89122, 89123, 89124, 89183.

Table 7: Birth Sex and COVID19 in Henderson

Case Status	Birth Sex Categories	N	%	Population	Rate per 100,000
Cases	Female	56901	52.2	266833	21325
	Male	51506	47.2	264892	19444
	Unknown	697	0.6	.	.
Hospitalizations	Female	2801	44.5	266833	1049.7
	Male	3484	55.3	264892	1315.3
	Unknown	12	0.2	.	.
Deaths	Female	805	39.3	266833	301.69
	Male	1236	60.3	264892	466.61
	Unknown	8	0.4	.	.

Note1: Population data source for calculating rate estimates: U.S. Census Bureau, ACS 5-year estimate.

Note2: Rates for categories with fewer than 12 cases are suppressed due to high relative standard error.

Note3: Hospitalizations are regardless of deceased status; Deaths are regardless of hospitalization status

Investigations are ongoing; data are subject to change.

Reporting through 23MAY2022

Henderson zip codes include 89002, 89011, 89012, 89014, 89015, 89044, 89052, 89074, 89119, 89120, 89122, 89123, 89124, 89183.