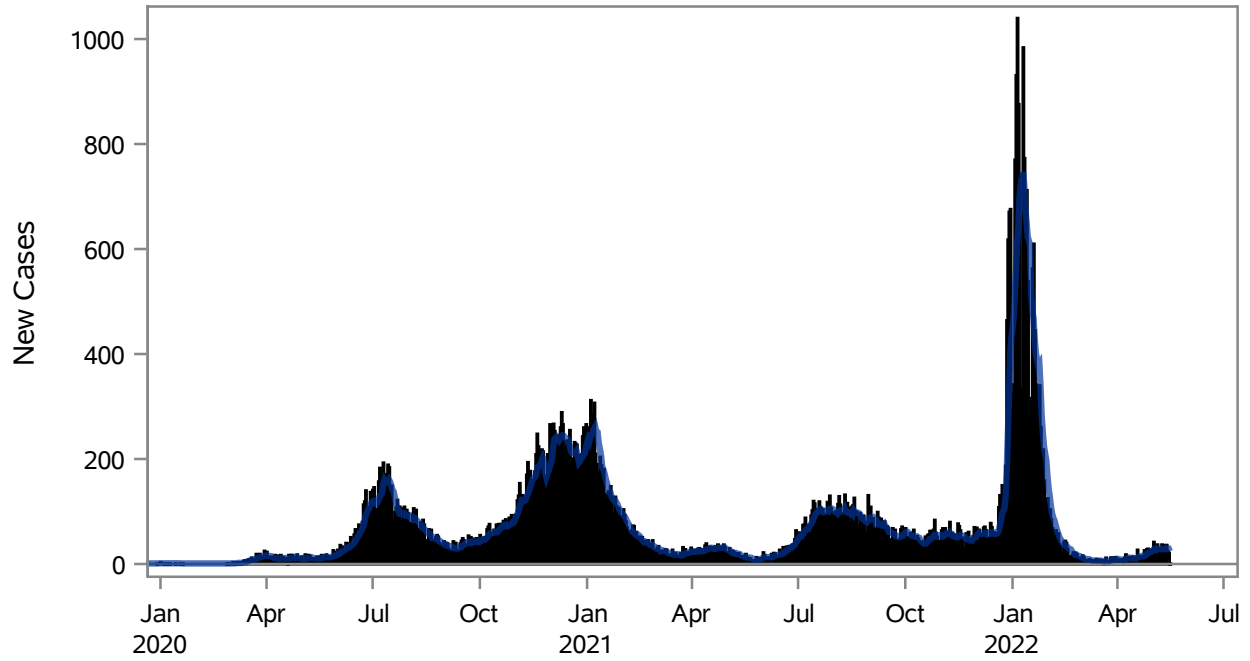


### COVID19 Cases for North Las Vegas, 7-Day Moving Average



■ New Cases    — 7-Day Moving Average

Investigations are ongoing; data are subject to change.

Reporting through 16MAY2022

North Las Vegas zip codes include 89030, 89031, 89032, 89033, 89036, 89081, 89084, 89085, 89086, 89087.

**Table 1: New COVID19 Cases and 7-Day Moving Average in North Las Vegas, Previous Two Weeks**

Date (Daily)	New Cases	7-Day Moving Average
03MAY2022	23	27.00
04MAY2022	28	26.86
05MAY2022	37	29.29
06MAY2022	21	28.43
07MAY2022	30	29.71
08MAY2022	22	29.00
09MAY2022	37	28.29
10MAY2022	25	28.57
11MAY2022	26	28.29
12MAY2022	36	28.14
13MAY2022	36	30.29
14MAY2022	24	29.43

---

Note1: Event Date is calculated as follows based on completed information:

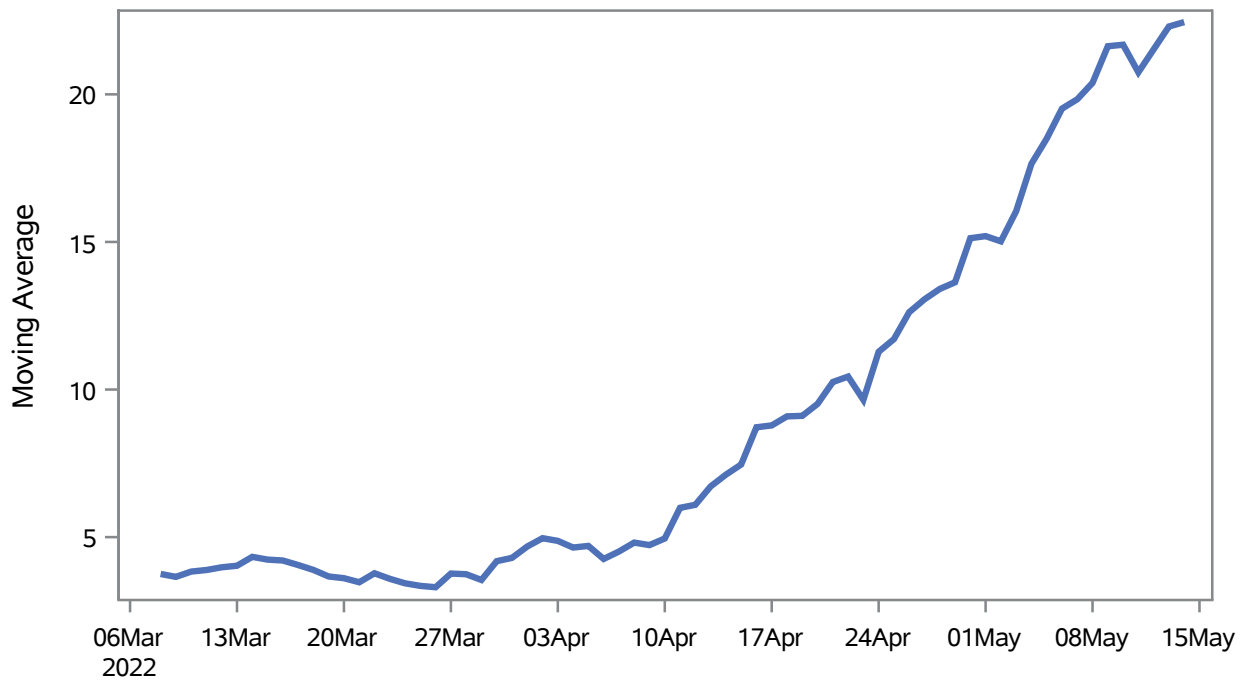
1) Disease onset date 2) Disease diagnosis date 3) Lab result collection date 4) Report date to SNHD.

---

**Investigations are ongoing; data are subject to change.  
Reporting through 16MAY2022**

**North Las Vegas zip codes include 89030, 89031, 89032, 89033, 89036, 89081, 89084, 89085, 89086, 89087.**

### Percent of People Receiving COVID-19 Viral Tests Who Have Positive Results in North Las Vegas



Investigations are ongoing; data are subject to change.

Reporting through 16MAY2022

North Las Vegas zip codes include 89030, 89031, 89032, 89033, 89036, 89081, 89084, 89085, 89086, 89087.

**Table 2: Percent of People Receiving COVID-19 Viral Tests Who Have Positive Results in North Las Vegas**

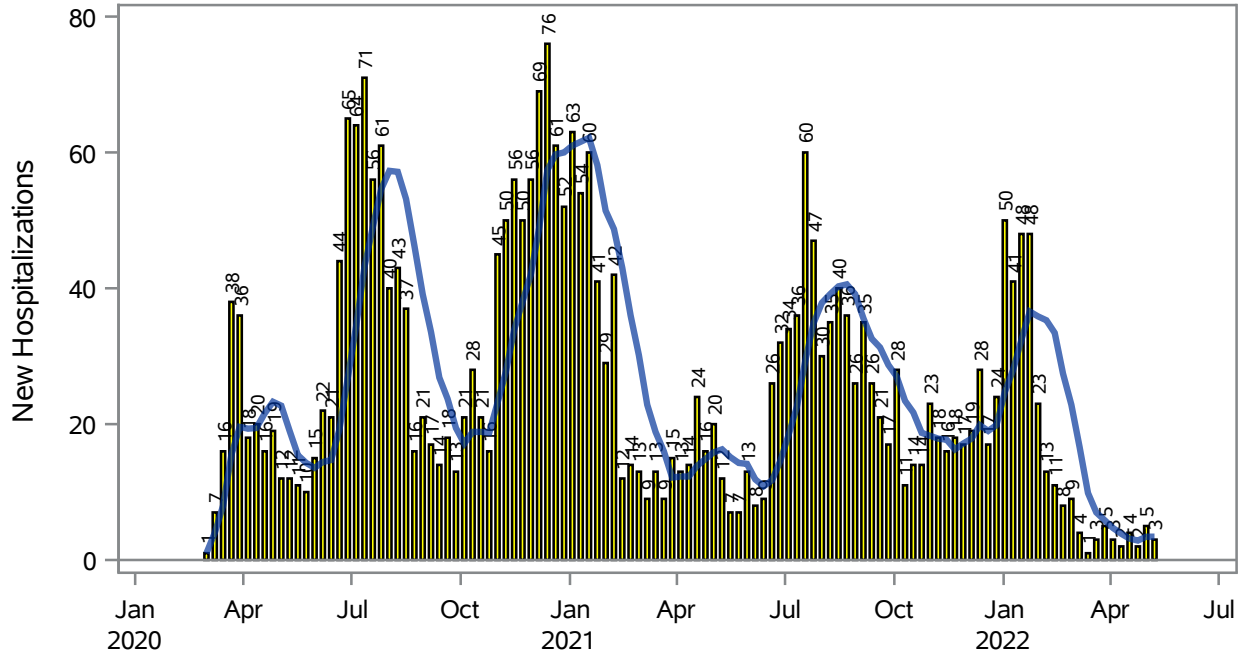
Collection Date	Positive	Negative	Equivocal	Total	% Positivity	7-Day Moving Average
30APR2022	25	108		133	18.80	15.1
01MAY2022	23	90		113	20.35	15.2
02MAY2022	41	260		301	13.62	15.0
03MAY2022	43	188	1	232	18.53	16.0
04MAY2022	49	153	1	203	24.14	17.6
05MAY2022	50	192		242	20.66	18.5
06MAY2022	40	155		195	20.51	19.5
07MAY2022	25	94		119	21.01	19.8
08MAY2022	24	75		99	24.24	20.4
09MAY2022	58	202		260	22.31	21.6
10MAY2022	41	175	1	217	18.89	21.7
11MAY2022	41	192		233	17.60	20.7
12MAY2022	53	150		203	26.11	21.5
13MAY2022	56	160		216	25.93	22.3
14MAY2022	30	106		136	22.06	22.4

Note: Testing Data includes a 3 day delay

**Investigations are ongoing; data are subject to change.  
Reporting through 16MAY2022**

**North Las Vegas zip codes include 89030, 89031, 89032, 89033, 89036, 89081, 89084, 89085, 89086, 89087.**

### COVID19 Hospitalizations for North Las Vegas, 7-Day Moving Average



■ New Hospitalizations — 7-Day Moving Average

Investigations are ongoing; data are subject to change.

Reporting through 16MAY2022

North Las Vegas zip codes include 89030, 89031, 89032, 89033, 89036, 89081, 89084, 89085, 89086, 89087.

**Table 3: New COVID19-Related Hospitalizations and 7-Day Moving Average in North Las Vegas, previous month**

Week	Hospitalizations	7-Day Moving Average
17APR2022	4	3.14
24APR2022	2	2.86
01MAY2022	5	3.43
08MAY2022	3	3.43

---

Note1: Admission Date is calculated as follows based on completed information:  
A) COVID19 Case is hospitalized B) COVID19 Case has a hospital admission date.

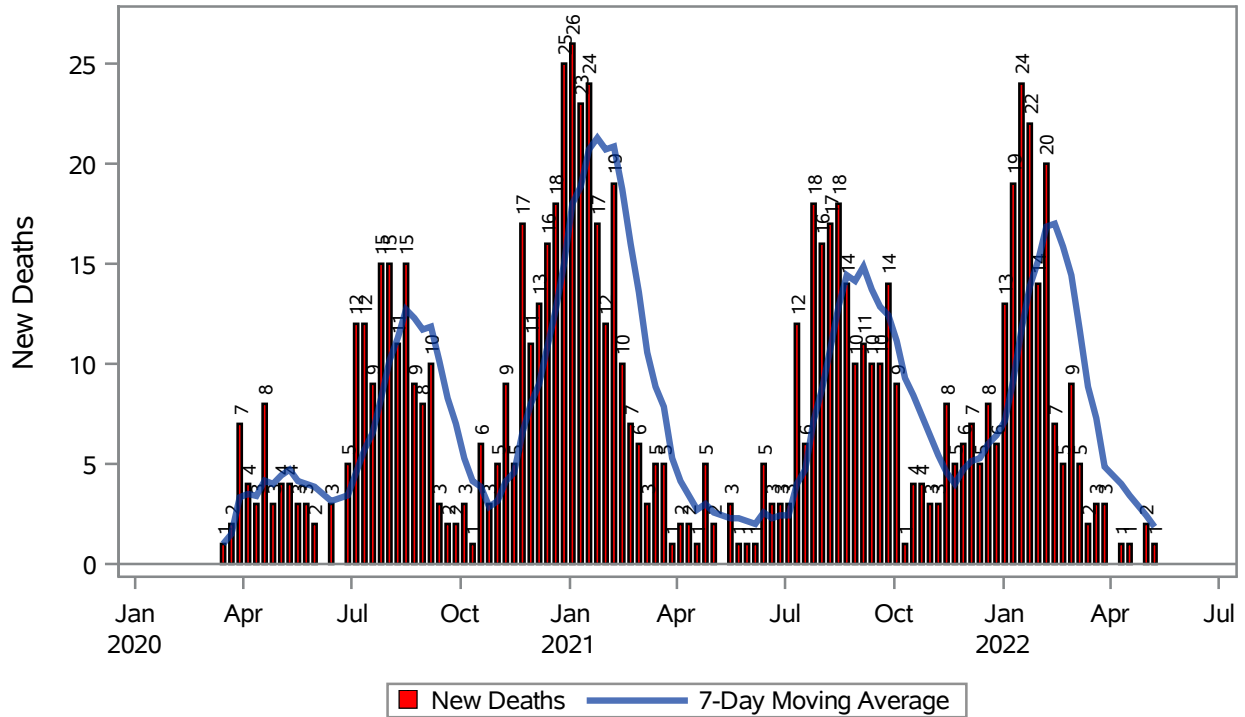
If admission date is missing, then the following is substituted temporarily, in order:  
1) Disease onset date 2) Disease diagnosis date 3) Lab result collection date 4) Report date to SNHD.

---

**Investigations are ongoing; data are subject to change.  
Reporting through 16MAY2022**

**North Las Vegas zip codes include 89030, 89031, 89032, 89033, 89036, 89081, 89084, 89085, 89086, 89087.**

### COVID19 Deaths for North Las Vegas, 7-Day Moving Average



Investigations are ongoing; data are subject to change.

Reporting through 16MAY2022

North Las Vegas zip codes include 89030, 89031, 89032, 89033, 89036, 89081, 89084, 89085, 89086, 89087.

**Table 4: New COVID19-Related Deaths and 7-Day Moving Average in North Las Vegas, Previous Month**

Week	Deaths	7-Day Moving Average
17APR2022	1	3.43
01MAY2022	2	2.43
08MAY2022	1	1.86

---

Note1: Date of Death is calculated as follows based on completed information:  
A) COVID19 Case is reported as deceased B) COVID19 Case has a reported date of death.

If date of death is missing, then the following is substituted temporarily, in order:  
1) Disease onset date 2) Disease diagnosis date  
3) Lab result collection date 4) Report date to SNHD.

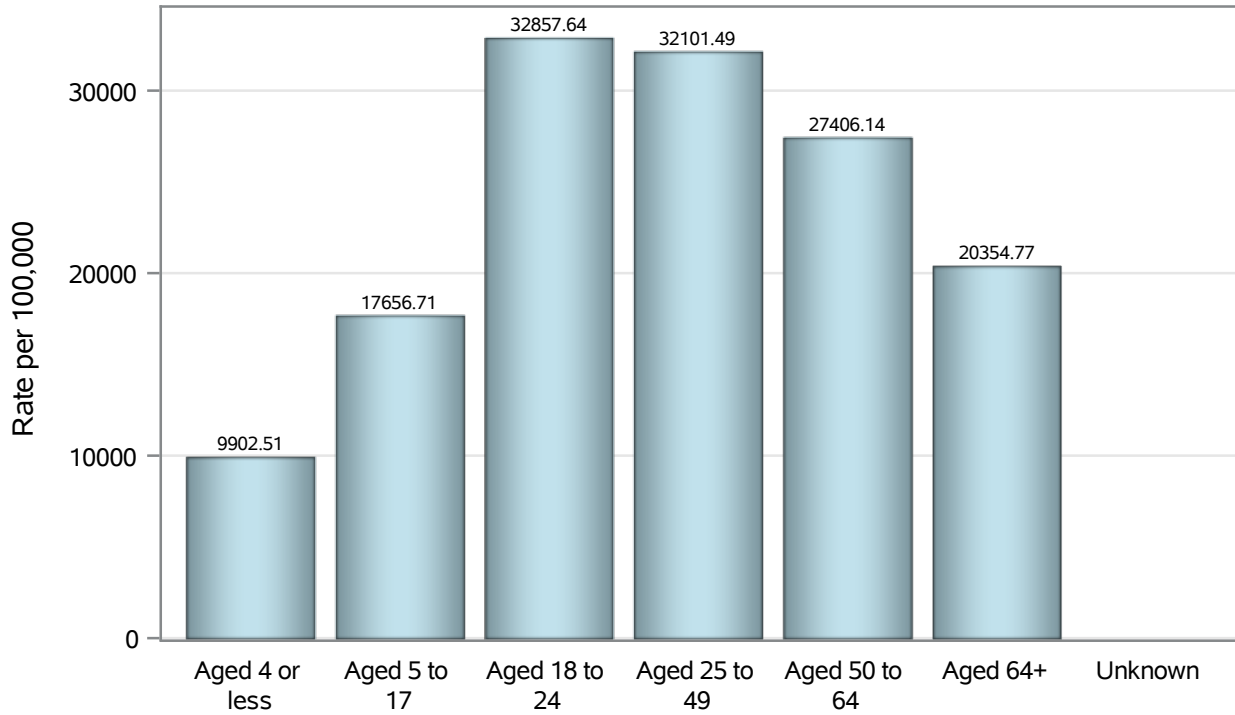
---

**Investigations are ongoing; data are subject to change.  
Reporting through 16MAY2022**

**North Las Vegas zip codes include 89030, 89031, 89032, 89033, 89036, 89081, 89084, 89085, 89086, 89087.**



### Case Age Rates in North Las Vegas

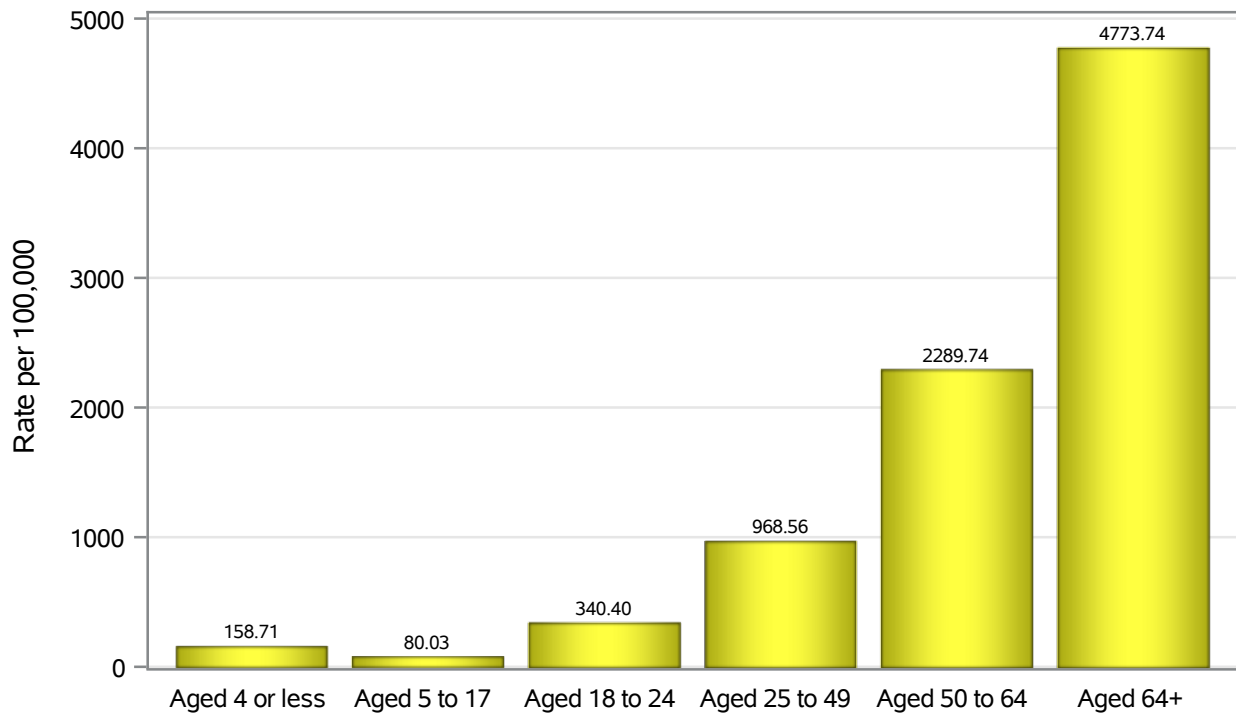


Investigations are ongoing; data are subject to change.

Reporting through 16MAY2022

North Las Vegas zip codes include 89030, 89031, 89032, 89033, 89036, 89081, 89084, 89085, 89086, 89087.

### Hospitalization Age Rates in North Las Vegas

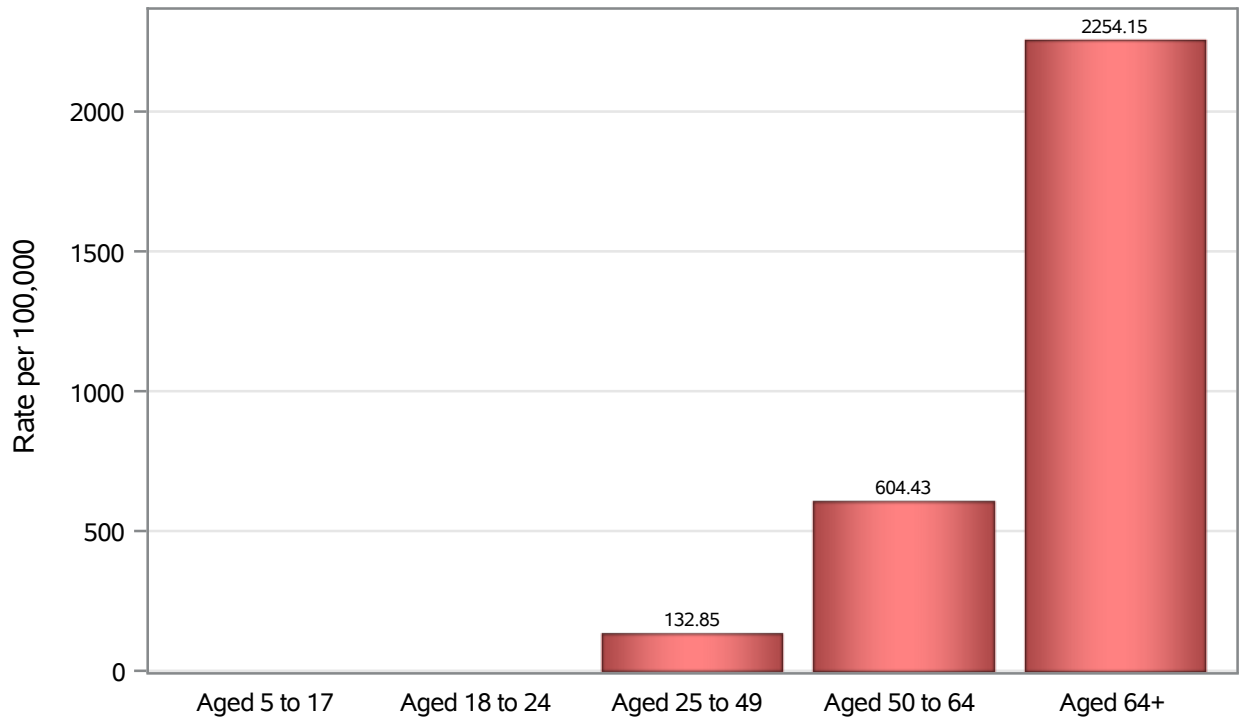


Investigations are ongoing; data are subject to change.

Reporting through 16MAY2022

North Las Vegas zip codes include 89030, 89031, 89032, 89033, 89036, 89081, 89084, 89085, 89086, 89087.

### Death Age Rates in North Las Vegas



Investigations are ongoing; data are subject to change.

Reporting through 16MAY2022

North Las Vegas zip codes include 89030, 89031, 89032, 89033, 89036, 89081, 89084, 89085, 89086, 89087.

**Table 5: Age and COVID19 in North Las Vegas**

Case Status	Age Categories	N	%	Population	Rate per 100,000
Cases	Aged 4 or less	1747	2.9	17,642	9902.5
	Aged 5 to 17	8825	14.8	49,981	17657
	Aged 18 to 24	7529	12.6	22,914	32858
	Aged 25 to 49	26581	44.6	82,803	32101
	Aged 50 to 64	10066	16.9	36,729	27406
	Aged 64+	4831	8.1	23,734	20355
	Unknown	10	0.0	.	.
Hospitalizations	Aged 4 or less	28	1.0	17,642	158.71
	Aged 5 to 17	40	1.4	49,981	80.03
	Aged 18 to 24	78	2.7	22,914	340.40
	Aged 25 to 49	802	27.4	82,803	968.56
	Aged 50 to 64	841	28.8	36,729	2289.7
	Aged 64+	1133	38.8	23,734	4773.7
	Deaths	Aged 5 to 17	1	0.1	49,981
Aged 18 to 24		2	0.2	22,914	.
Aged 25 to 49		110	12.6	82,803	132.85
Aged 50 to 64		222	25.5	36,729	604.43
Aged 64+		535	61.5	23,734	2254.2

Note1: Population data source for calculating rate estimates: U.S. Census Bureau, ACS 5-year estimate.

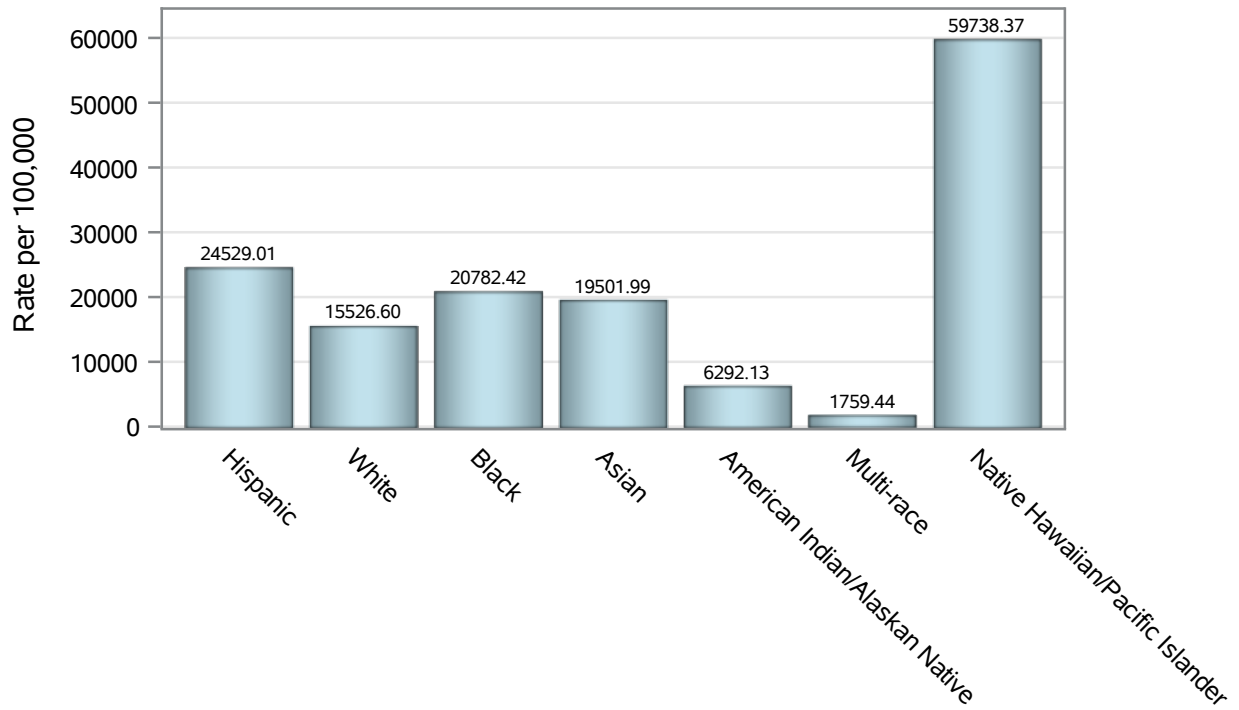
Note2: Rates for categories with fewer than 12 cases are suppressed due to high relative standard error.

Note3: Hospitalizations are regardless of deceased status; Deaths are regardless of hospitalization status

**Investigations are ongoing; data are subject to change.  
Reporting through 16MAY2022**

**North Las Vegas zip codes include 89030, 89031, 89032, 89033, 89036, 89081, 89084, 89085, 89086, 89087.**

### Case Race/Ethnicity Rates in North Las Vegas

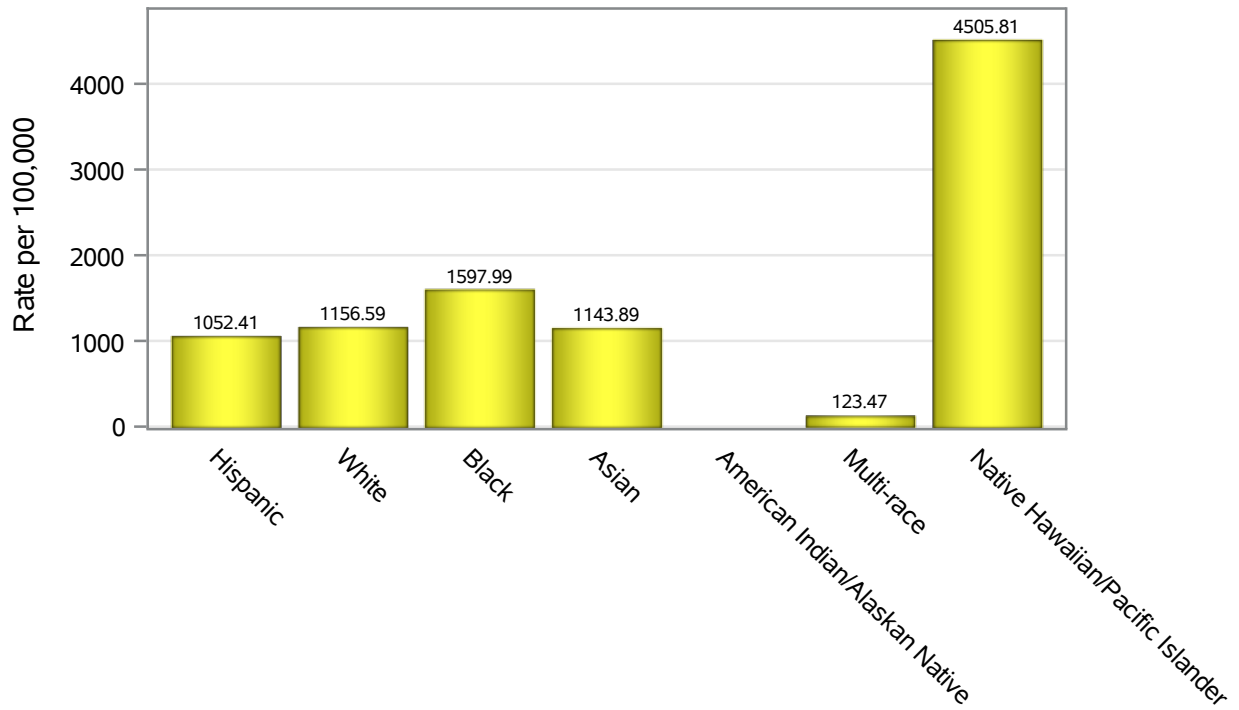


Investigations are ongoing; data are subject to change.

Reporting through 16MAY2022

North Las Vegas zip codes include 89030, 89031, 89032, 89033, 89036, 89081, 89084, 89085, 89086, 89087.

### Hospitalization Race/Ethnicity Rates in North Las Vegas

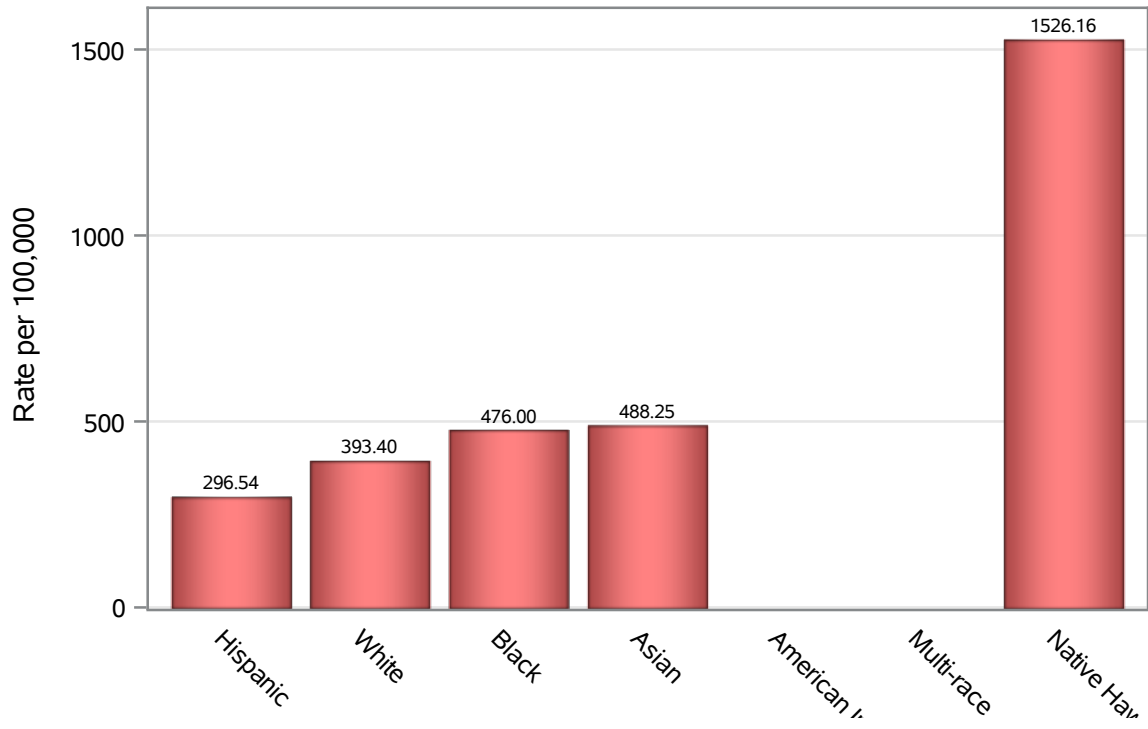


Investigations are ongoing; data are subject to change.

Reporting through 16MAY2022

North Las Vegas zip codes include 89030, 89031, 89032, 89033, 89036, 89081, 89084, 89085, 89086, 89087.

### Death Race/Ethnicity Rates in North Las Vegas



Investigations are ongoing; data are subject to change.

Reporting through 16MAY2022

North Las Vegas zip codes include 89030, 89031, 89032, 89033, 89036, 89081, 89084, 89085, 89086, 89087.

**Table 6: Race/Ethnicity and COVID19 in North Las Vegas**

Case Status	Race Ethnicity Categories	N	%	Population	Rate per 100,000
Cases	Hispanic	23657	39.7	96,445	24529
	White	9867	16.6	63,549	15527
	Black	9780	16.4	47,059	20782
	Asian	2796	4.7	14,337	19502
	American Indian/Alaskan Native	56	0.1	890	6292.1
	Multi-race	171	0.3	9,719	1759.4
	Native Hawaiian/Pacific Islander	822	1.4	1,376	59738
	Unknown	12440	20.9	.	.
Hospitalizations	Hispanic	1015	34.7	96,445	1052.4
	White	735	25.2	63,549	1156.6
	Black	752	25.7	47,059	1598.0
	Asian	164	5.6	14,337	1143.9
	American Indian/Alaskan Native	11	0.4	890	.
	Multi-race	12	0.4	9,719	123.47
	Native Hawaiian/Pacific Islander	62	2.1	1,376	4505.8
	Unknown	171	5.9	.	.
Deaths	Hispanic	286	32.9	96,445	296.54
	White	250	28.7	63,549	393.40
	Black	224	25.7	47,059	476.00
	Asian	70	8.0	14,337	488.25
	American Indian/Alaskan Native	6	0.7	890	.
	Multi-race	6	0.7	9,719	.
	Native Hawaiian/Pacific Islander	21	2.4	1,376	1526.2
	Unknown	7	0.8	.	.

Note1: Population data source for calculating rate estimates: U.S. Census Bureau, ACS 5-year estimate.

Note2: Rates for categories with fewer than 12 cases are suppressed due to high relative standard error.

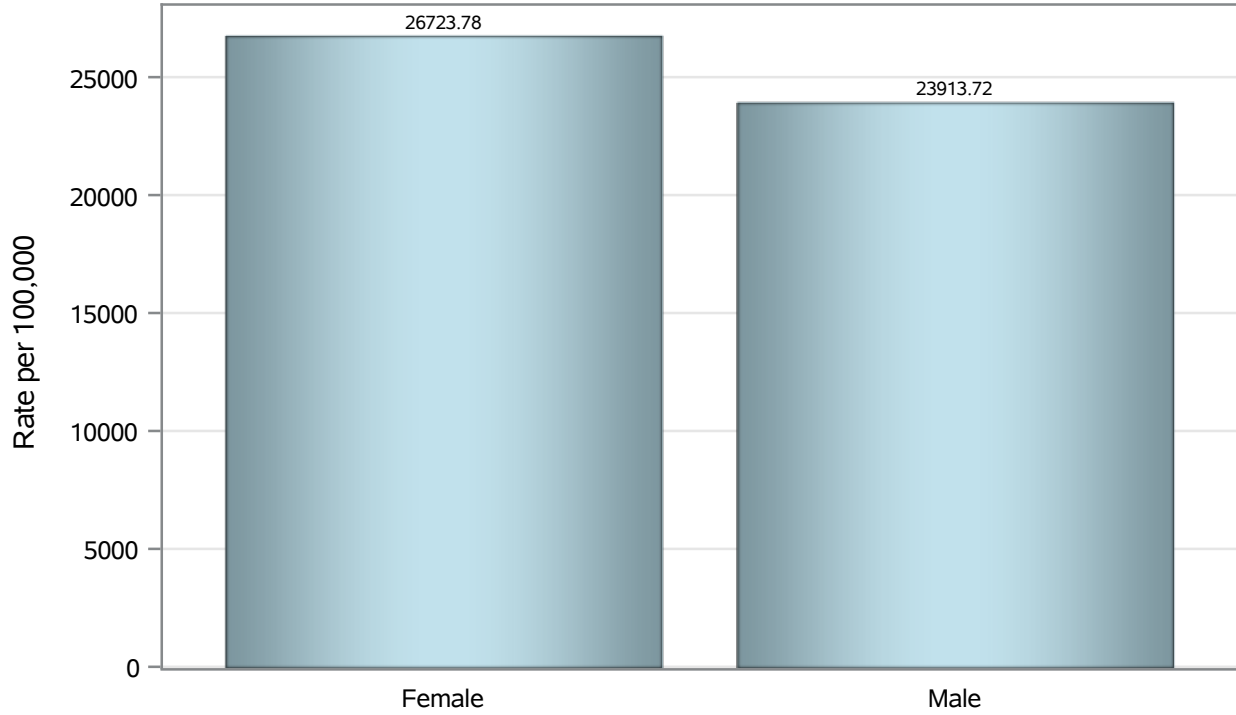
Note3: Hospitalizations are regardless of deceased status; Deaths are regardless of hospitalization status

**Investigations are ongoing; data are subject to change.  
Reporting through 16MAY2022**

**North Las Vegas zip codes include 89030, 89031, 89032, 89033, 89036, 89081, 89084, 89085, 89086, 89087.**



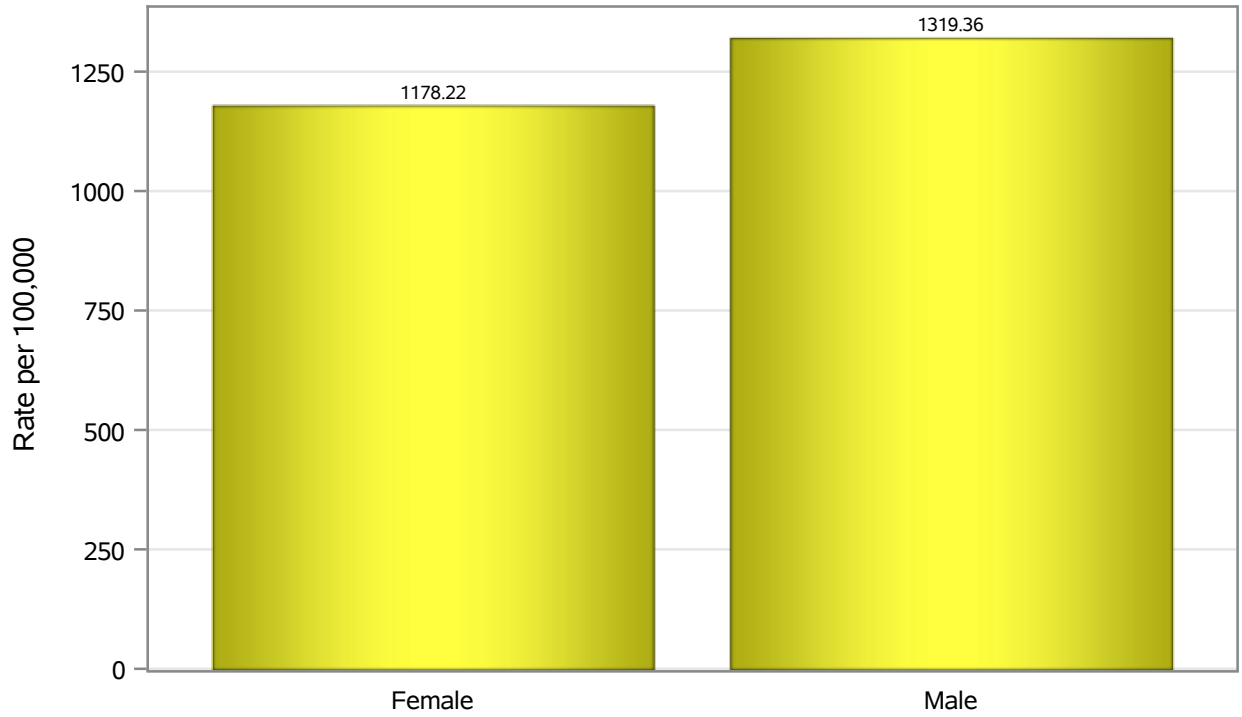
### Case Birth Sex Rates in North Las Vegas



Investigations are ongoing; data are subject to change.  
Reporting through 16MAY2022

North Las Vegas zip codes include 89030, 89031, 89032, 89033, 89036, 89081, 89084, 89085, 89086, 89087.

### Hospitalization Birth Sex Rates in North Las Vegas

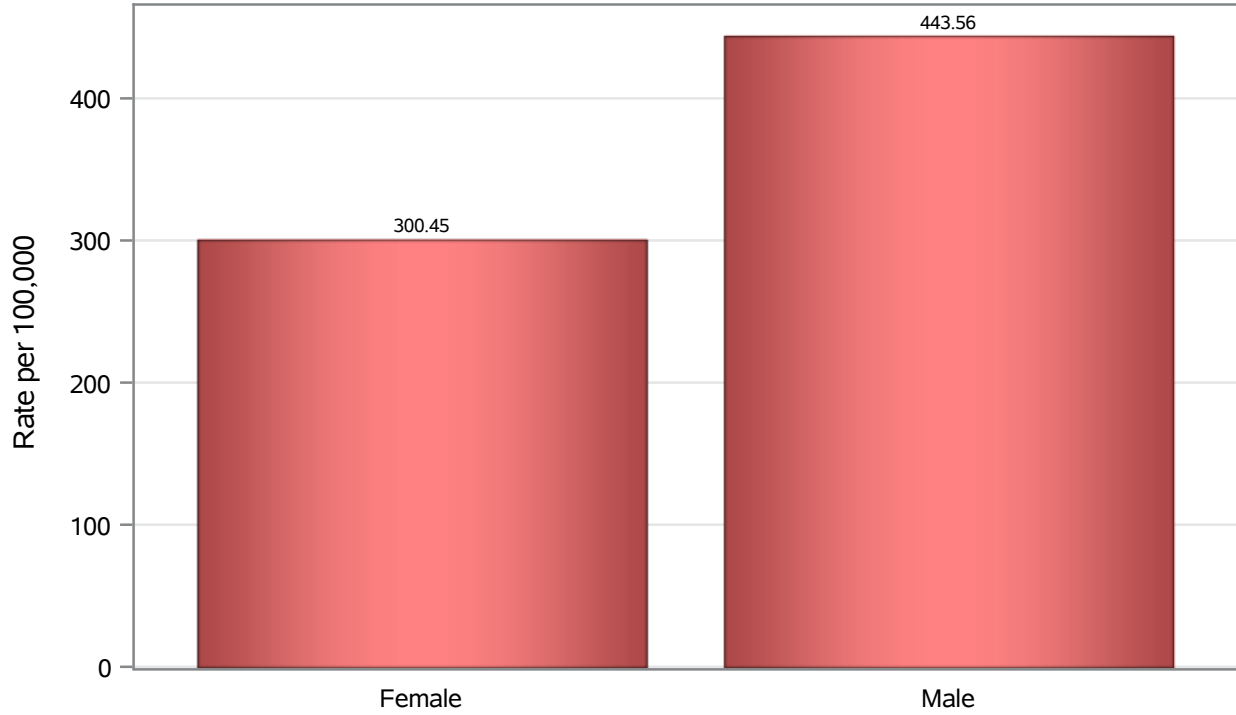


Investigations are ongoing; data are subject to change.

Reporting through 16MAY2022

North Las Vegas zip codes include 89030, 89031, 89032, 89033, 89036, 89081, 89084, 89085, 89086, 89087.

### Death Birth Sex Rates in North Las Vegas



Investigations are ongoing; data are subject to change.

Reporting through 16MAY2022

North Las Vegas zip codes include 89030, 89031, 89032, 89033, 89036, 89081, 89084, 89085, 89086, 89087.

**Table 7: Birth Sex and COVID19 in North Las Vegas**

Case Status	Birth Sex Categories	N	%	Population	Rate per 100,000
Cases	Female	31754	53.3	118823	26724
	Male	27496	46.1	114980	23914
	Unknown	339	0.6	.	.
Hospitalizations	Female	1400	47.9	118823	1178.2
	Male	1517	51.9	114980	1319.4
	Unknown	5	0.2	.	.
Deaths	Female	357	41.0	118823	300.45
	Male	510	58.6	114980	443.56
	Unknown	3	0.3	.	.

Note1: Population data source for calculating rate estimates: U.S. Census Bureau, ACS 5-year estimate.

Note2: Rates for categories with fewer than 12 cases are suppressed due to high relative standard error.

Note3: Hospitalizations are regardless of deceased status; Deaths are regardless of hospitalization status

**Investigations are ongoing; data are subject to change.  
Reporting through 16MAY2022**

**North Las Vegas zip codes include 89030, 89031, 89032, 89033, 89036, 89081, 89084, 89085, 89086, 89087.**