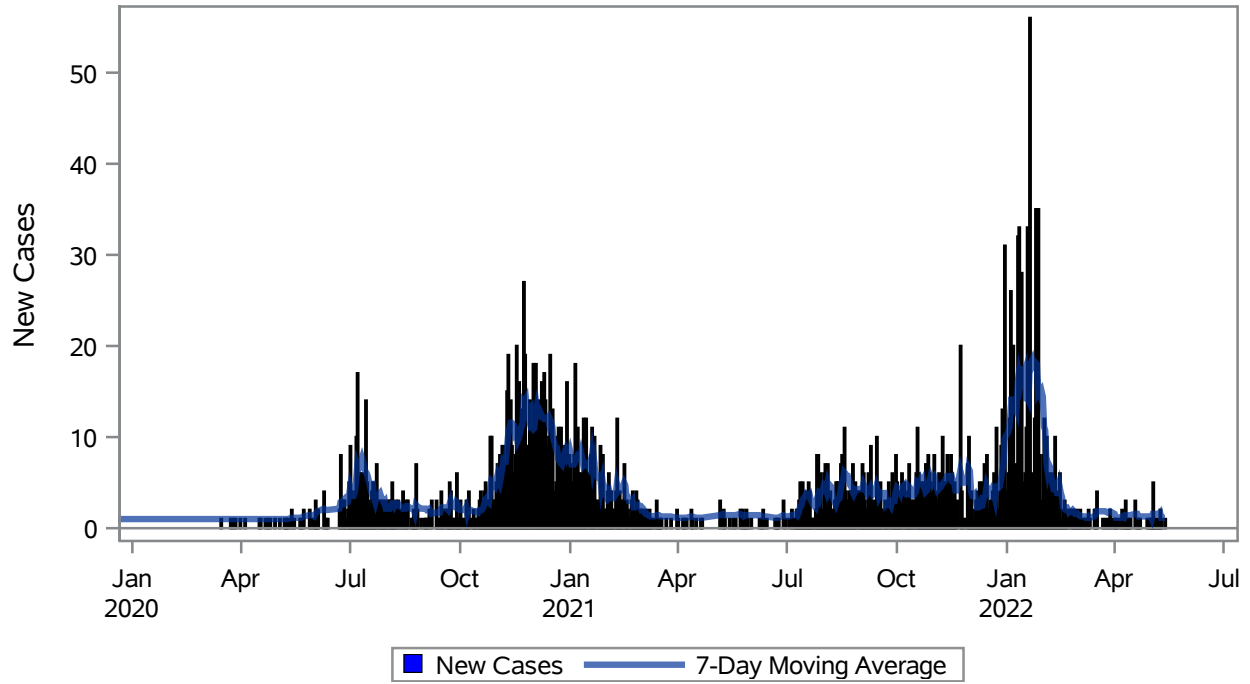


### COVID19 Cases for Mesquite, 7-Day Moving Average

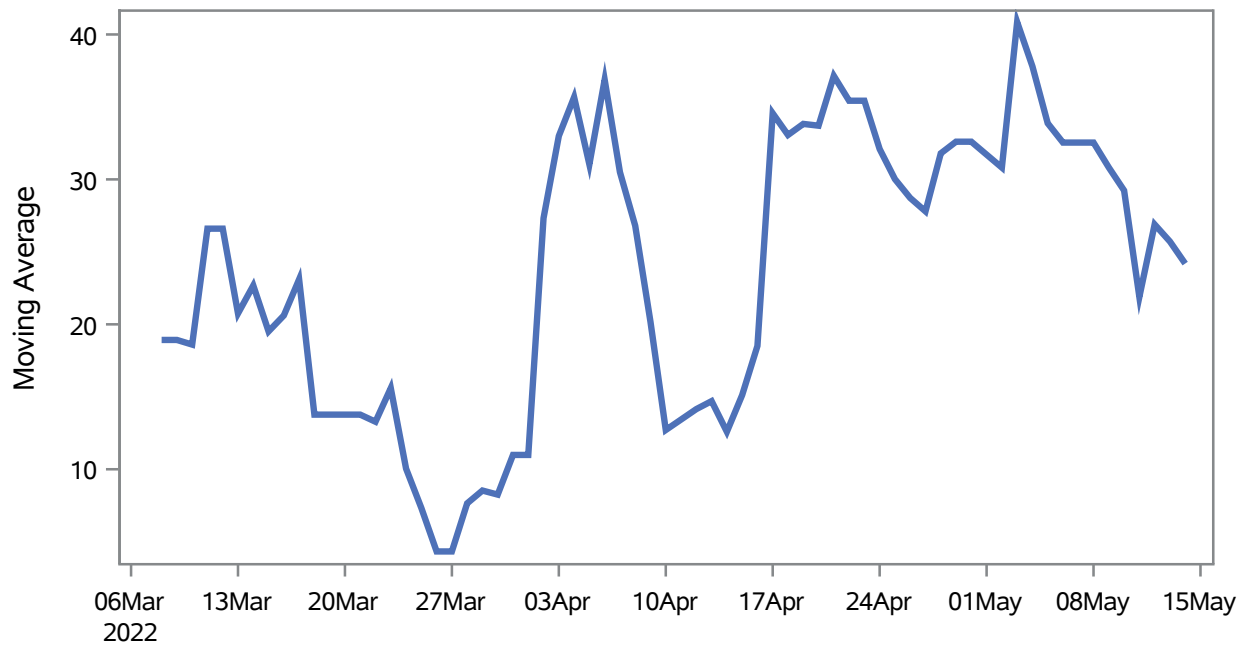


Investigations are ongoing; data are subject to change.

Reporting through 16MAY2022

Mesquite zip codes include 89027,89034. The U.S. Census Bureau data uses Zip Code Tabulation Area (ZCTA), which does not list 89034 but has incorporated areas of 89034 within 89027 through the American Community Survey (ACS) 5-Year Estimates.

### Percent of People Receiving COVID-19 Viral Tests Who Have Positive Results in Mesquite



Investigations are ongoing; data are subject to change.

Reporting through 16MAY2022

Mesquite zip codes include 89027,89034. The U.S. Census Bureau data uses Zip Code Tabulation Area (ZCTA), which does not list 89034 but has incorporated areas of 89034 within 89027 through the American Community Survey (ACS) 5-Year Estimates.

**Table 1: Age and COVID19 in Mesquite**

Case Status	Age Categories	N	%	Population	Rate per 100,000
Cases	Aged 4 or less	27	1.0	702	3846.2
	Aged 5 to 17	256	9.8	2,217	11547
	Aged 18 to 24	233	8.9	938	24840
	Aged 25 to 49	713	27.3	3,386	21057
	Aged 50 to 64	558	21.4	3,371	16553
	Aged 64+	821	31.5	7,290	11262
Hospitalizations	Aged 4 or less	1	0.7	702	--
	Aged 5 to 17	1	0.7	2,217	--
	Aged 25 to 49	12	8.9	3,386	354.40
	Aged 50 to 64	22	16.3	3,371	652.63
	Aged 64+	99	73.3	7,290	1358.0
Deaths	Aged 25 to 49	1	1.8	3,386	--
	Aged 50 to 64	4	7.3	3,371	--
	Aged 64+	50	90.9	7,290	685.87

Note1: Population data source for calculating rate estimates: U.S. Census Bureau, ACS 5-year estimate.

Note2: Rates for categories with fewer than 12 cases are suppressed due to high relative standard error.

Note3: Hospitalizations are regardless of deceased status; Deaths are regardless of hospitalization status

**Investigations are ongoing; data are subject to change.  
Reporting through 16MAY2022**

**Mesquite zip codes include 89027,89034. The U.S. Census Bureau data uses Zip Code Tabulation Area (ZCTA), which does not list 89034 but has incorporated areas of 89034 within 89027 through the American Community Survey (ACS) 5-Year Estimates.**

**Table 2: Race/Ethnicity and COVID19 in Mesquite**

Case Status	Race Ethnicity Categories	N	%	Population	Rate per 100,000
Cases	Hispanic	707	27.1	3,738	18914
	White	1447	55.5	13,120	11029
	Black	--	--	148	14865
	Asian	--	--	486	9670.8
	American Indian/Alaskan Native	--	--	95	--
	Multi-race	--	--	240	--
	Native Hawaiian/Pacific Islander	--	--	30	60000
	Unknown	359	13.8	.	.
Hospitalizations	Hispanic	25	18.5	3,738	668.81
	White	95	70.4	13,120	724.09
	Black	--	--	148	--
	Asian	--	--	486	--
	American Indian/Alaskan Native	--	--	95	--
	Multi-race	--	--	240	--
	Native Hawaiian/Pacific Islander	--	--	30	--
	Unknown	7	5.2	.	.
Deaths	Hispanic	3	5.5	3,738	--
	White	49	89.1	13,120	373.48
	Asian	--	--	486	--
	American Indian/Alaskan Native	--	--	95	--
	Native Hawaiian/Pacific Islander	--	--	30	--

Note1: Population data source for calculating rate estimates: U.S. Census Bureau, ACS 5-year estimate.

Note2: Rates for categories with fewer than 12 cases are suppressed due to high relative standard error. Counts for categories with population less than 500 are suppressed for confidentiality.

Note3: Due to suppression, the total counts per case status may not equal expected totals.

Note4: Hospitalizations are regardless of deceased status; Deaths are regardless of hospitalization status

**Investigations are ongoing; data are subject to change.  
Reporting through 16MAY2022**

**Mesquite zip codes include 89027,89034. The U.S. Census Bureau data uses Zip Code Tabulation Area (ZCTA), which does not list 89034 but has incorporated areas of 89034 within 89027 through the American Community Survey (ACS) 5-Year Estimates.**

**Table 3: Birth Sex and COVID19 in Mesquite**

Case Status	Birth Sex Categories	N	%	Population	Rate per 100,000
Cases	Female	1403	53.8	9,111	15399
	Male	1183	45.4	8,793	13454
	Unknown	22	0.8	.	.
Hospitalizations	Female	57	42.2	9,111	625.62
	Male	78	57.8	8,793	887.07
Deaths	Female	17	30.9	9,111	186.59
	Male	38	69.1	8,793	432.16

Note1: Population data source for calculating rate estimates: U.S. Census Bureau, ACS 5-year estimate.

Note2: Rates for categories with fewer than 12 cases are suppressed due to high relative standard error. Counts for categories with population less than 500 are suppressed for confidentiality.

Note3: Hospitalizations are regardless of deceased status; Deaths are regardless of hospitalization status

**Investigations are ongoing; data are subject to change.  
Reporting through 16MAY2022**

**Mesquite zip codes include 89027,89034. The U.S. Census Bureau data uses Zip Code Tabulation Area (ZCTA), which does not list 89034 but has incorporated areas of 89034 within 89027 through the American Community Survey (ACS) 5-Year Estimates.**