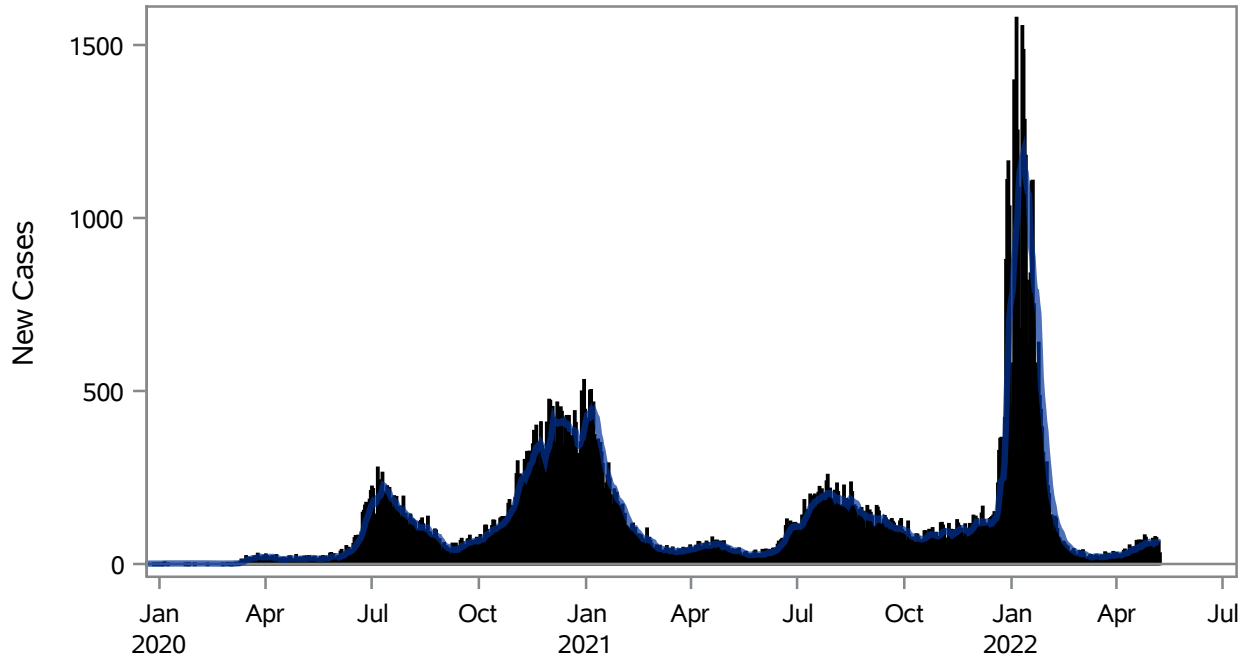


COVID19 Cases for Henderson, 7-Day Moving Average



■ New Cases — 7-Day Moving Average

Investigations are ongoing; data are subject to change.

Reporting through 09MAY2022

Henderson zip codes include 89002, 89011, 89012, 89014, 89015, 89044, 89052, 89074, 89119, 89120, 89122, 89123, 89124, 89183.

Table 1: New COVID19 Cases and 7-Day Moving Average in Henderson, Previous Two Weeks

Date (Daily)	New Cases	7-Day Moving Average
26APR2022	75	59.86
27APR2022	61	59.00
28APR2022	58	61.43
29APR2022	62	60.71
30APR2022	59	63.57
01MAY2022	43	62.86
02MAY2022	72	61.43
03MAY2022	54	58.43
04MAY2022	77	60.71
05MAY2022	74	63.00
06MAY2022	61	62.86
07MAY2022	64	63.57

Note1: Event Date is calculated as follows based on completed information:

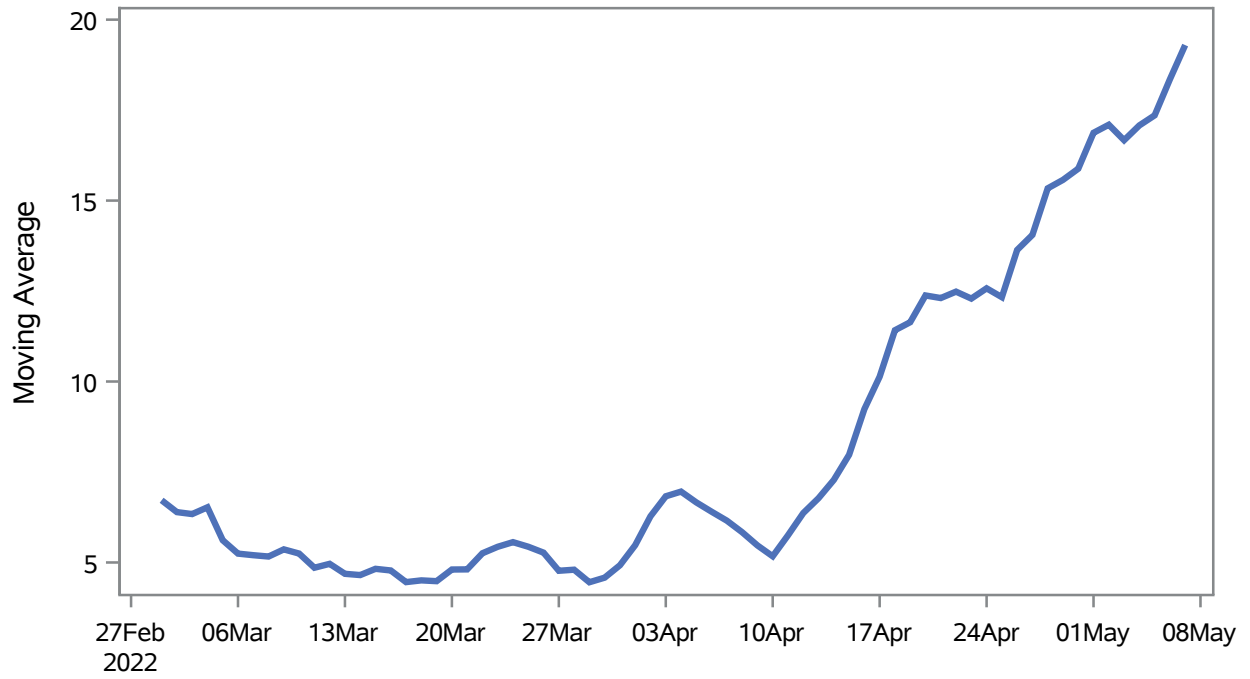
1) Disease onset date 2) Disease diagnosis date 3) Lab result collection date 4) Report date to SNHD.

Investigations are ongoing; data are subject to change.

Reporting through 09MAY2022

Henderson zip codes include 89002, 89011, 89012, 89014, 89015, 89044, 89052, 89074, 89119, 89120, 89122, 89123, 89124, 89183.

Percent of People Receiving COVID-19 Viral Tests Who Have Positive Results in Henderson



Investigations are ongoing; data are subject to change.
Reporting through 09MAY2022

Henderson zip codes include 89002, 89011, 89012, 89014, 89015, 89044, 89052, 89074, 89119, 89120, 89122, 89123, 89124, 89183.

Table 2: Percent of People Receiving COVID-19 Viral Tests Who Have Positive Results in Henderson

Collection Date	Positive	Negative	Equivocal	Total	% Positivity	7-Day Moving Average
23APR2022	31	179		210	14.76	12.3
24APR2022	29	190		219	13.24	12.6
25APR2022	63	317	1	381	16.54	12.3
26APR2022	73	318		391	18.67	13.6
27APR2022	58	332		390	14.87	14.1
28APR2022	66	323		389	16.97	15.3
29APR2022	55	338	1	394	13.96	15.6
30APR2022	43	211		254	16.93	15.9
01MAY2022	45	178		223	20.18	16.9
02MAY2022	74	335		409	18.09	17.1
03MAY2022	53	284	1	338	15.68	16.7
04MAY2022	72	333	1	406	17.73	17.1
05MAY2022	66	282	1	349	18.91	17.4
06MAY2022	75	283		358	20.95	18.4
07MAY2022	60	195		255	23.53	19.3

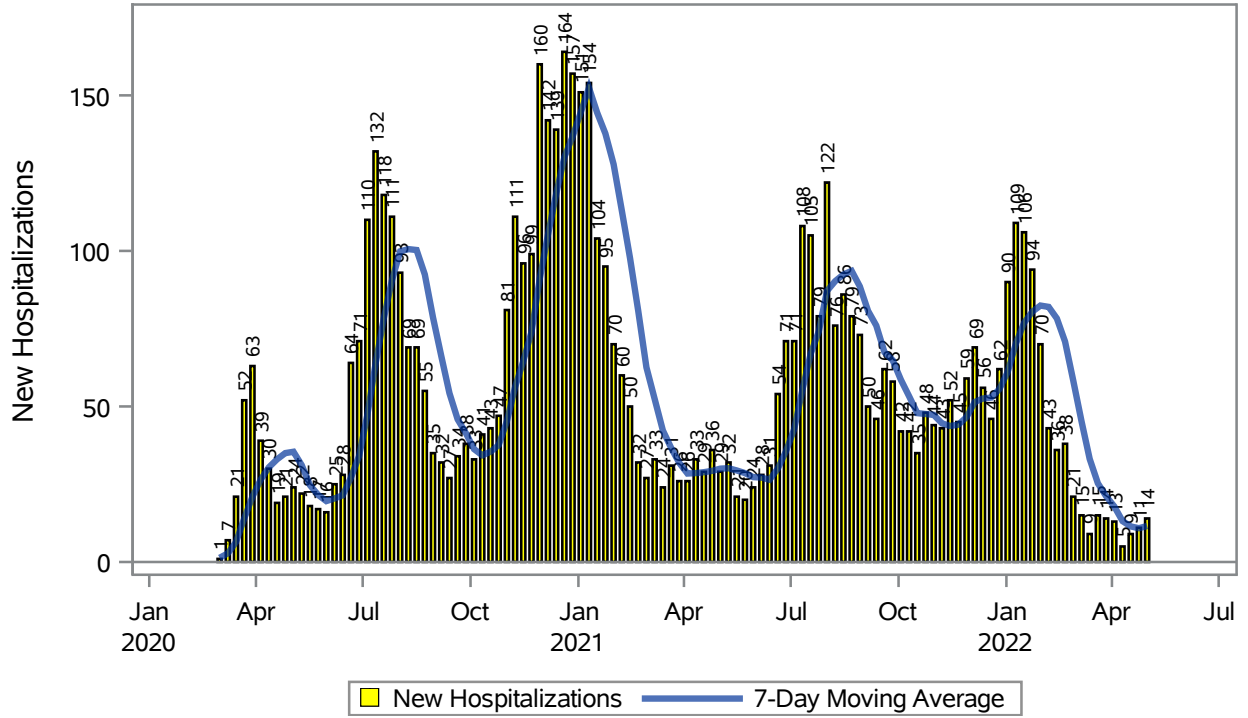
Note: Testing Data includes a 3 day delay

Investigations are ongoing; data are subject to change.

Reporting through 09MAY2022

Henderson zip codes include 89002, 89011, 89012, 89014, 89015, 89044, 89052, 89074, 89119, 89120, 89122, 89123, 89124, 89183.

COVID19 Hospitalizations for Henderson, 7-Day Moving Average



Investigations are ongoing; data are subject to change.
Reporting through 09MAY2022

Henderson zip codes include 89002, 89011, 89012, 89014, 89015, 89044, 89052, 89074, 89119, 89120, 89122, 89123, 89124, 89183.

Table 3: New COVID19-Related Hospitalizations and 7-Day Moving Average in Henderson, previous month

Week	Hospitalizations	7-Day Moving Average
10APR2022	5	13.1
17APR2022	9	11.4
24APR2022	11	10.9
01MAY2022	14	11.6

Note1: Admission Date is calculated as follows based on completed information:
A) COVID19 Case is hospitalized B) COVID19 Case has a hospital admission date.

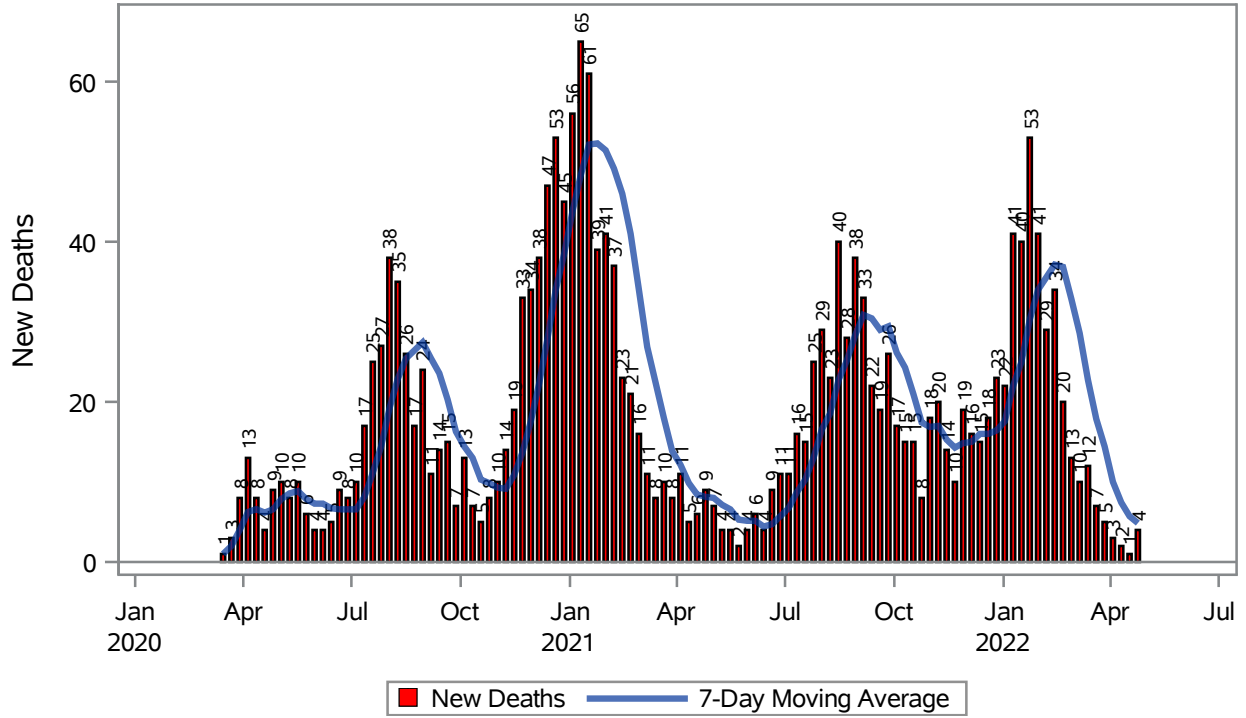
If admission date is missing, then the following is substituted temporarily, in order:
1) Disease onset date 2) Disease diagnosis date 3) Lab result collection date 4) Report date to SNHD.

Investigations are ongoing; data are subject to change.

Reporting through 09MAY2022

Henderson zip codes include 89002, 89011, 89012, 89014, 89015, 89044, 89052, 89074, 89119, 89120, 89122, 89123, 89124, 89183.

COVID19 Deaths for Henderson, 7-Day Moving Average



Investigations are ongoing; data are subject to change.

Reporting through 09MAY2022

Henderson zip codes include 89002, 89011, 89012, 89014, 89015, 89044, 89052, 89074, 89119, 89120, 89122, 89123, 89124, 89183.

Table 4: New COVID19-Related Deaths and 7-Day Moving Average in Henderson, Previous Month

Week	Deaths	7-Day Moving Average
10APR2022	2	7.43
17APR2022	1	5.71
24APR2022	4	4.86

Note1: Date of Death is calculated as follows based on completed information:
A) COVID19 Case is reported as deceased B) COVID19 Case has a reported date of death.

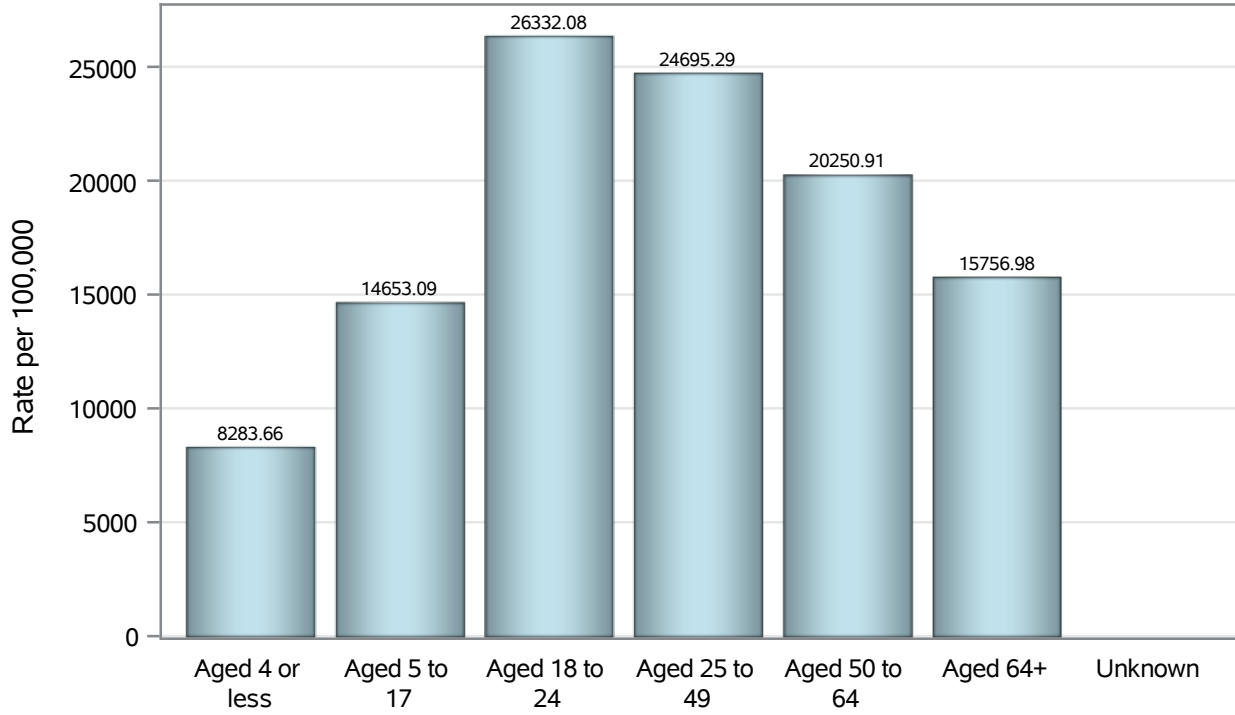
If date of death is missing, then the following is substituted temporarily, in order:
1) Disease onset date 2) Disease diagnosis date
3) Lab result collection date 4) Report date to SNHD.

Investigations are ongoing; data are subject to change.

Reporting through 09MAY2022

Henderson zip codes include 89002, 89011, 89012, 89014, 89015, 89044, 89052, 89074, 89119, 89120, 89122, 89123, 89124, 89183.

Case Age Rates in Henderson

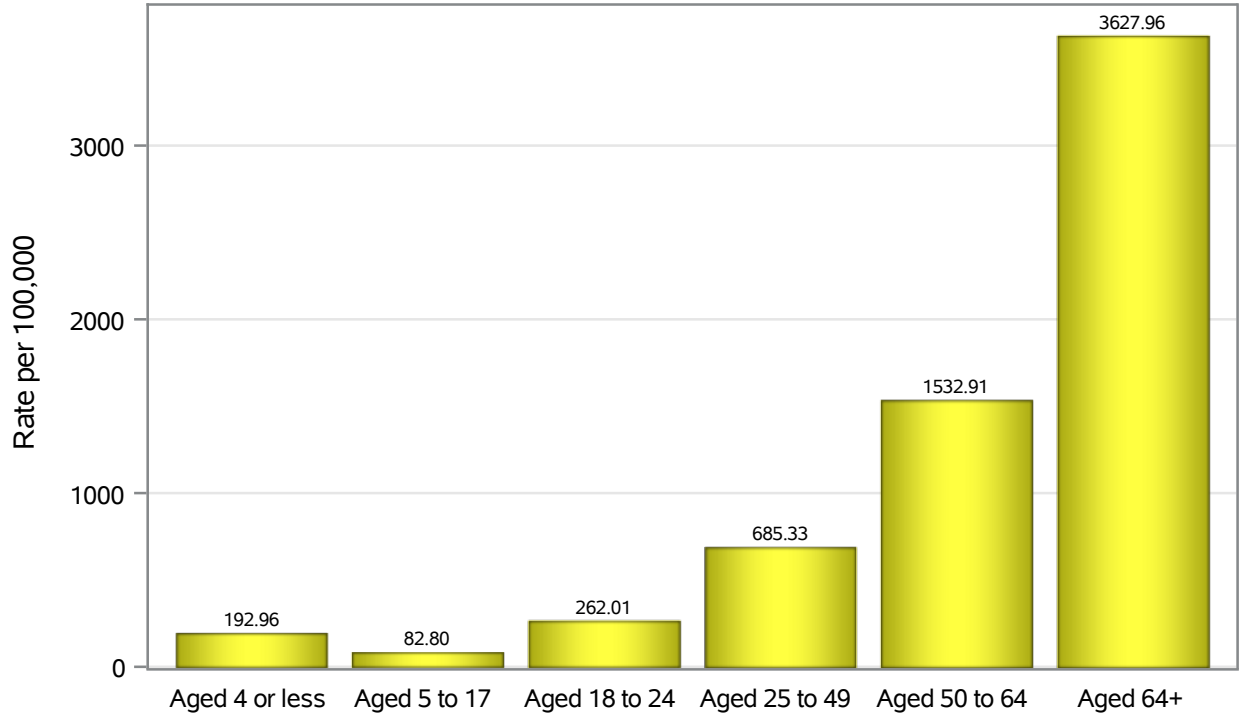


Investigations are ongoing; data are subject to change.

Reporting through 09MAY2022

Henderson zip codes include 89002, 89011, 89012, 89014, 89015, 89044, 89052, 89074, 89119, 89120, 89122, 89123, 89124, 89183.

Hospitalization Age Rates in Henderson

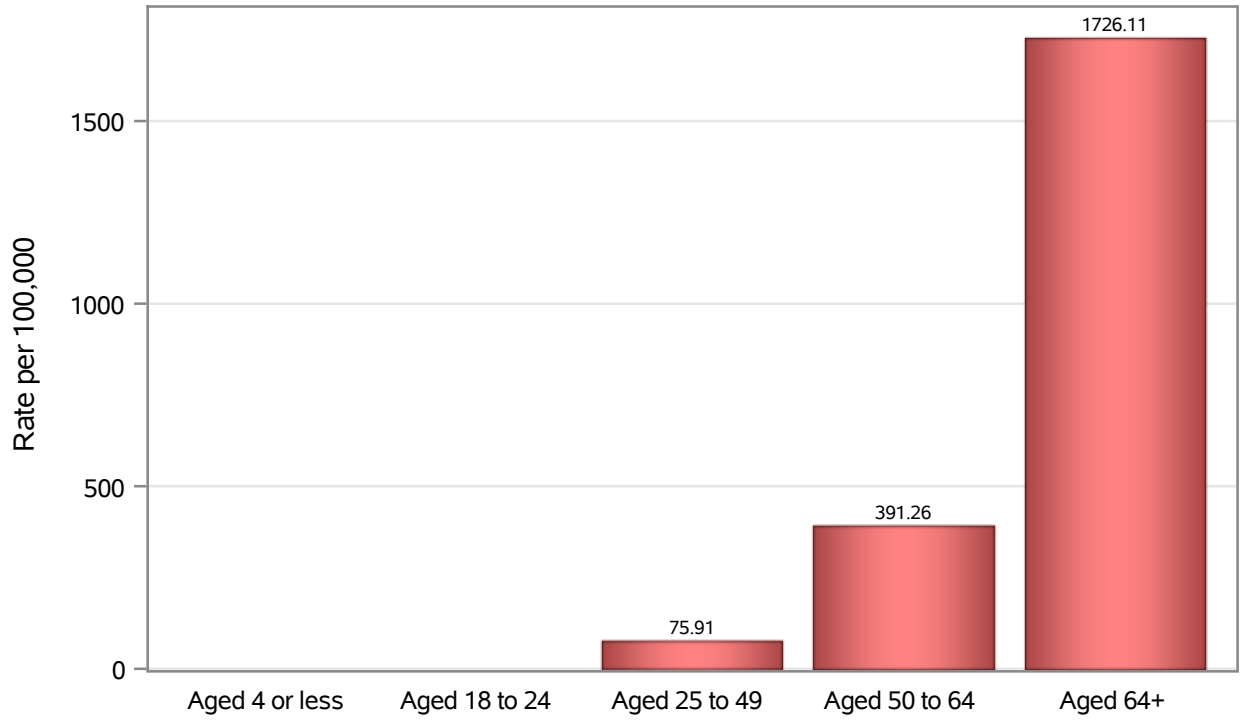


Investigations are ongoing; data are subject to change.

Reporting through 09MAY2022

Henderson zip codes include 89002, 89011, 89012, 89014, 89015, 89044, 89052, 89074, 89119, 89120, 89122, 89123, 89124, 89183.

Death Age Rates in Henderson



Investigations are ongoing; data are subject to change.

Reporting through 09MAY2022

Henderson zip codes include 89002, 89011, 89012, 89014, 89015, 89044, 89052, 89074, 89119, 89120, 89122, 89123, 89124, 89183.

Table 5: Age and COVID19 in Henderson

Case Status	Age Categories	N	%	Population	Rate per 100,000
Cases	Aged 4 or less	2404	2.3	29,021	8283.7
	Aged 5 to 17	12034	11.3	82,126	14653
	Aged 18 to 24	11658	10.9	44,273	26332
	Aged 25 to 49	46196	43.3	187064	24695
	Aged 50 to 64	20807	19.5	102746	20251
	Aged 64+	13629	12.8	86,495	15757
	Unknown	22	0.0	.	.
Hospitalizations	Aged 4 or less	56	0.9	29,021	192.96
	Aged 5 to 17	68	1.1	82,126	82.80
	Aged 18 to 24	116	1.9	44,273	262.01
	Aged 25 to 49	1282	20.6	187064	685.33
	Aged 50 to 64	1575	25.3	102746	1532.9
	Aged 64+	3138	50.3	86,495	3628.0
	Deaths	Aged 4 or less	1	0.0	29,021
Aged 18 to 24		3	0.1	44,273	.
Aged 25 to 49		142	7.0	187064	75.91
Aged 50 to 64		402	19.7	102746	391.26
Aged 64+		1493	73.2	86,495	1726.1

Note1: Population data source for calculating rate estimates: U.S. Census Bureau, ACS 5-year estimate.

Note2: Rates for categories with fewer than 12 cases are suppressed due to high relative standard error.

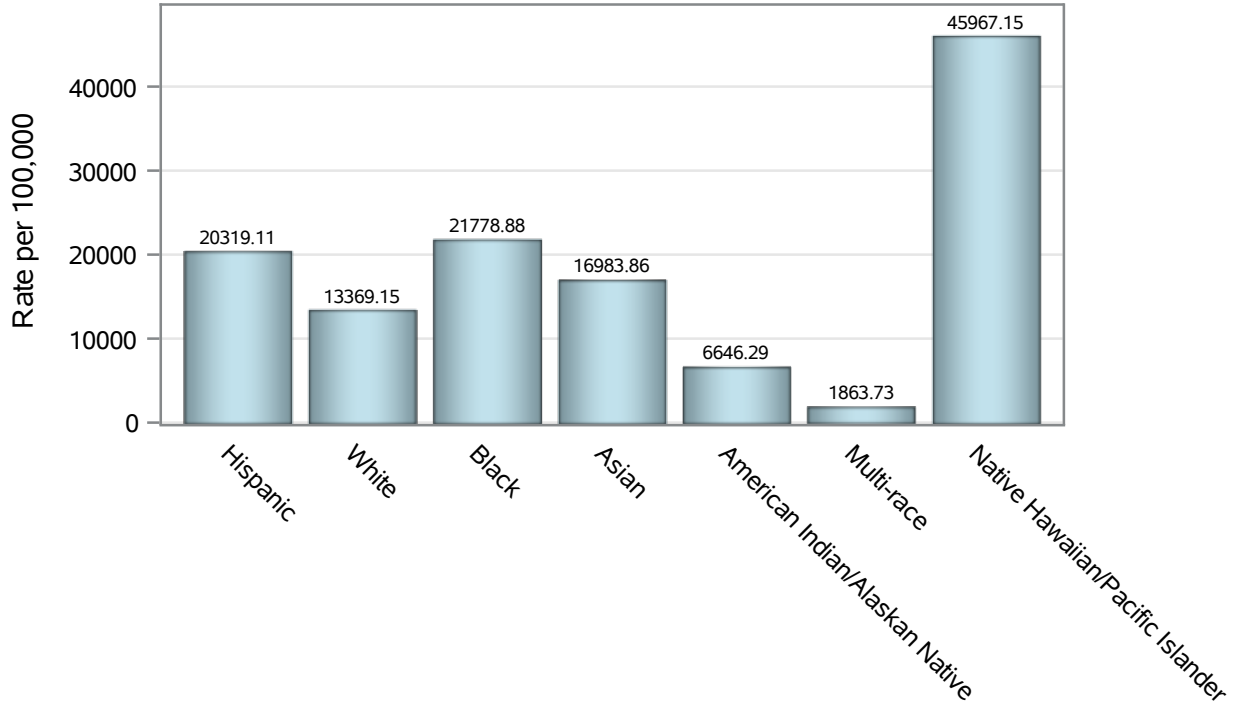
Note3: Hospitalizations are regardless of deceased status; Deaths are regardless of hospitalization status

Investigations are ongoing; data are subject to change.

Reporting through 09MAY2022

Henderson zip codes include 89002, 89011, 89012, 89014, 89015, 89044, 89052, 89074, 89119, 89120, 89122, 89123, 89124, 89183.

Case Race/Ethnicity Rates in Henderson

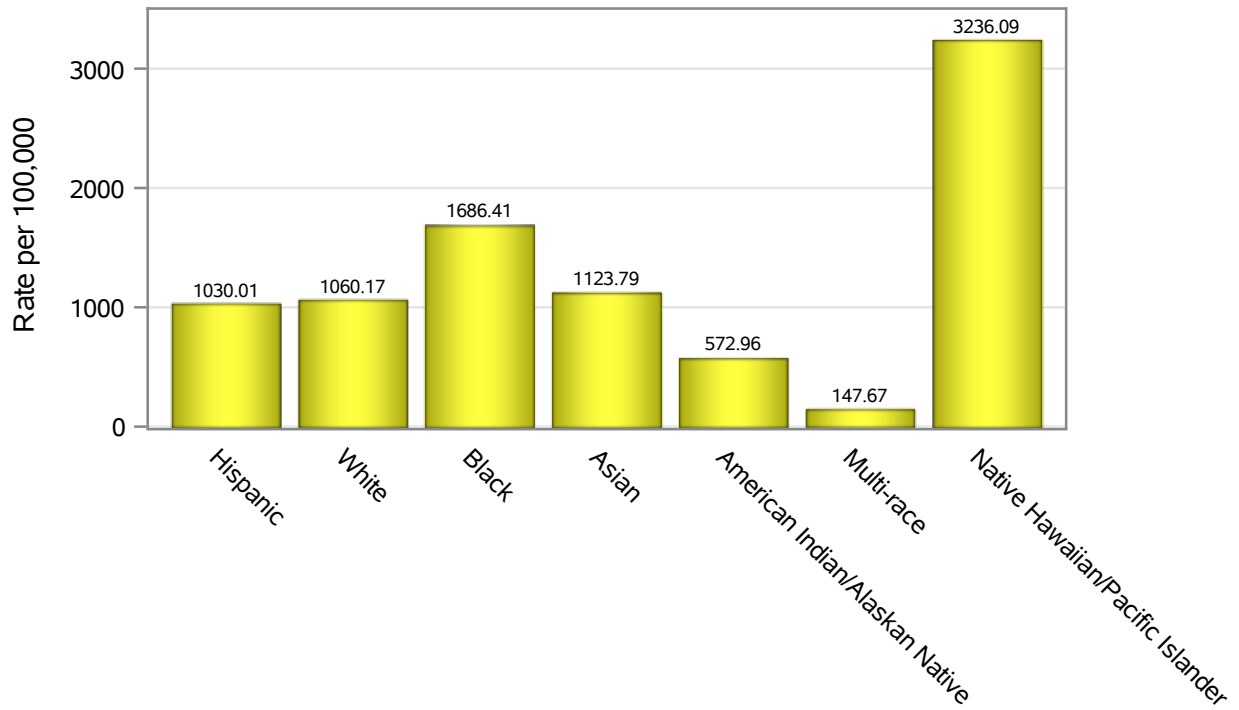


Investigations are ongoing; data are subject to change.

Reporting through 09MAY2022

Henderson zip codes include 89002, 89011, 89012, 89014, 89015, 89044, 89052, 89074, 89119, 89120, 89122, 89123, 89124, 89183.

Hospitalization Race/Ethnicity Rates in Henderson

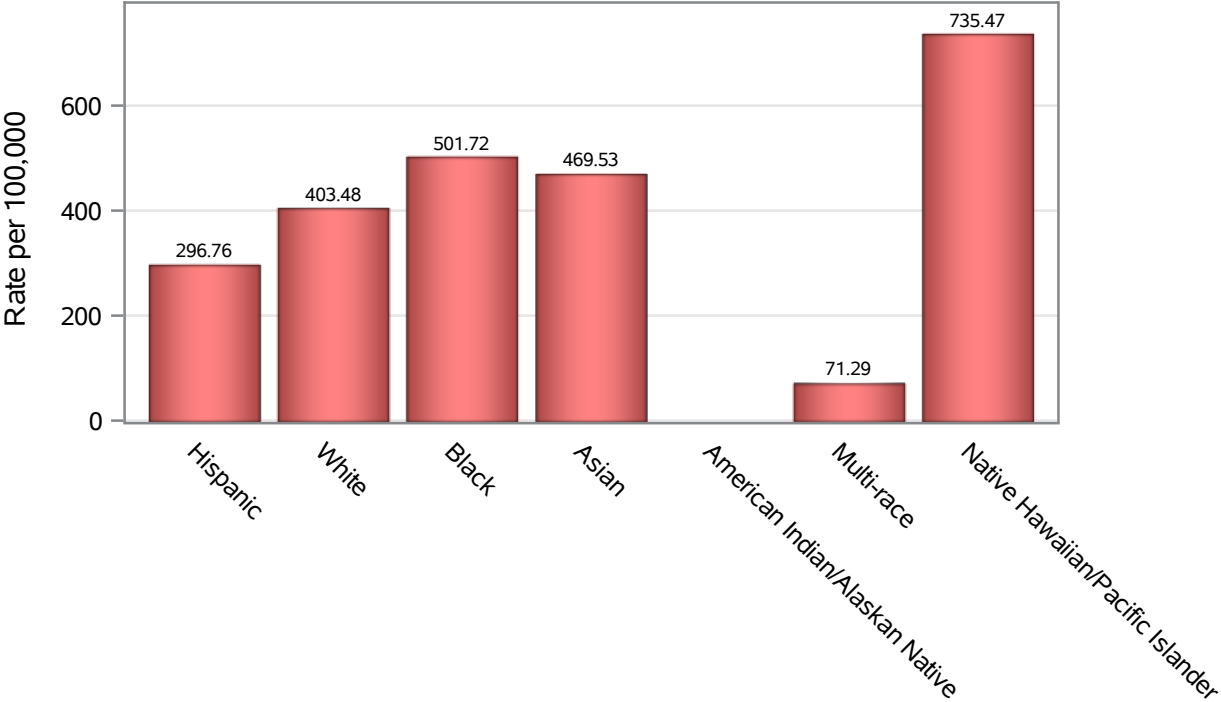


Investigations are ongoing; data are subject to change.

Reporting through 09MAY2022

Henderson zip codes include 89002, 89011, 89012, 89014, 89015, 89044, 89052, 89074, 89119, 89120, 89122, 89123, 89124, 89183.

Death Race/Ethnicity Rates in Henderson



Investigations are ongoing; data are subject to change.

Reporting through 09MAY2022

Henderson zip codes include 89002, 89011, 89012, 89014, 89015, 89044, 89052, 89074, 89119, 89120, 89122, 89123, 89124, 89183.

Table 6: Race/Ethnicity and COVID19 in Henderson

Case Status	Race Ethnicity Categories	N	%	Population	Rate per 100,000
Cases	Hispanic	24718	23.2	121649	20319
	White	38966	36.5	291462	13369
	Black	8291	7.8	38,069	21779
	Asian	8826	8.3	51,967	16984
	American Indian/Alaskan Native	174	0.2	2,618	6646.3
	Multi-race	366	0.3	19,638	1863.7
	Native Hawaiian/Pacific Islander	1875	1.8	4,079	45967
	Unknown	23534	22.0	.	.
Hospitalizations	Hispanic	1253	20.1	121649	1030.0
	White	3090	49.6	291462	1060.2
	Black	642	10.3	38,069	1686.4
	Asian	584	9.4	51,967	1123.8
	American Indian/Alaskan Native	15	0.2	2,618	572.96
	Multi-race	29	0.5	19,638	147.67
	Native Hawaiian/Pacific Islander	132	2.1	4,079	3236.1
	Unknown	490	7.9	.	.
Deaths	Hispanic	361	17.7	121649	296.76
	White	1176	57.6	291462	403.48
	Black	191	9.4	38,069	501.72
	Asian	244	12.0	51,967	469.53
	American Indian/Alaskan Native	8	0.4	2,618	.
	Multi-race	14	0.7	19,638	71.29
	Native Hawaiian/Pacific Islander	30	1.5	4,079	735.47
	Unknown	17	0.8	.	.

Note1: Population data source for calculating rate estimates: U.S. Census Bureau, ACS 5-year estimate.

Note2: Rates for categories with fewer than 12 cases are suppressed due to high relative standard error.

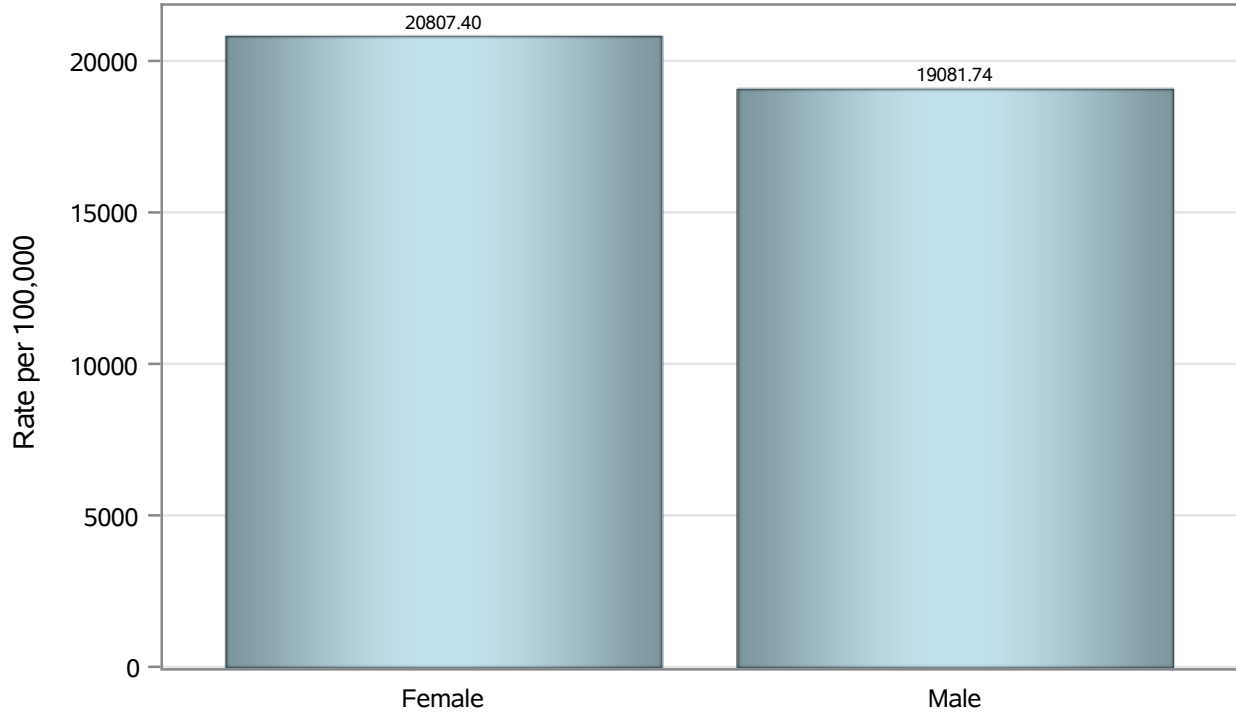
Note3: Hospitalizations are regardless of deceased status; Deaths are regardless of hospitalization status

Investigations are ongoing; data are subject to change.

Reporting through 09MAY2022

Henderson zip codes include 89002, 89011, 89012, 89014, 89015, 89044, 89052, 89074, 89119, 89120, 89122, 89123, 89124, 89183.

Case Birth Sex Rates in Henderson

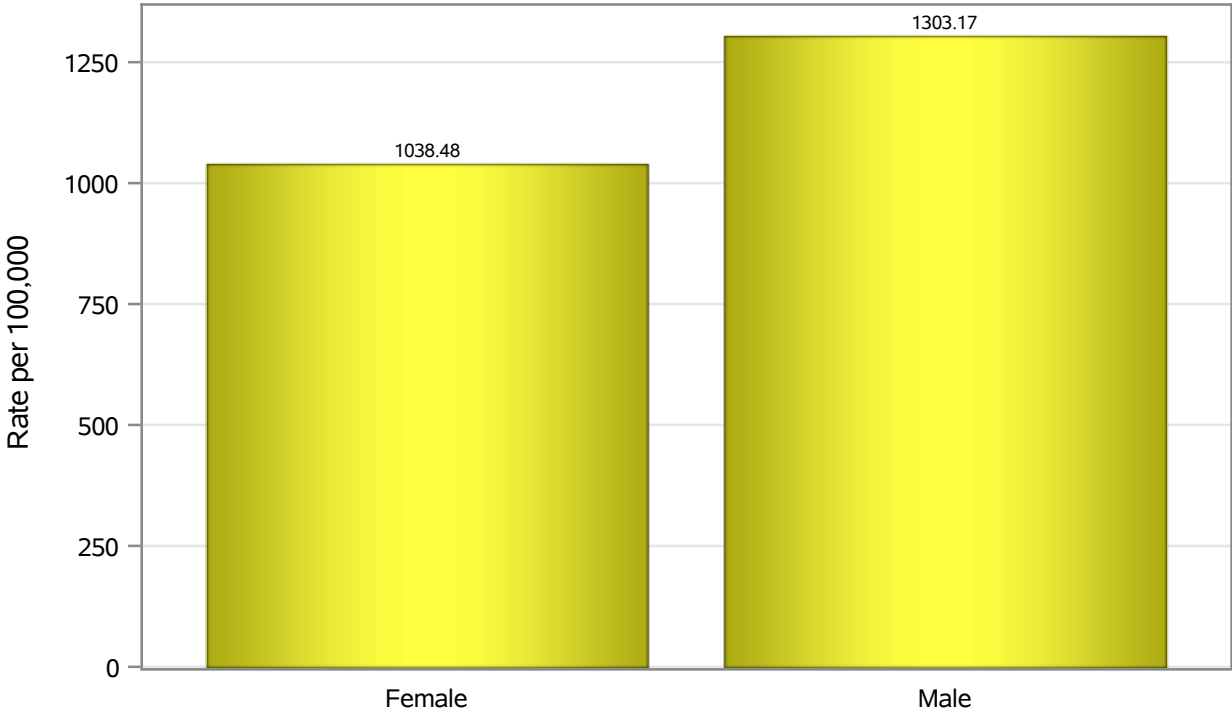


Investigations are ongoing; data are subject to change.

Reporting through 09MAY2022

Henderson zip codes include 89002, 89011, 89012, 89014, 89015, 89044, 89052, 89074, 89119, 89120, 89122, 89123, 89124, 89183.

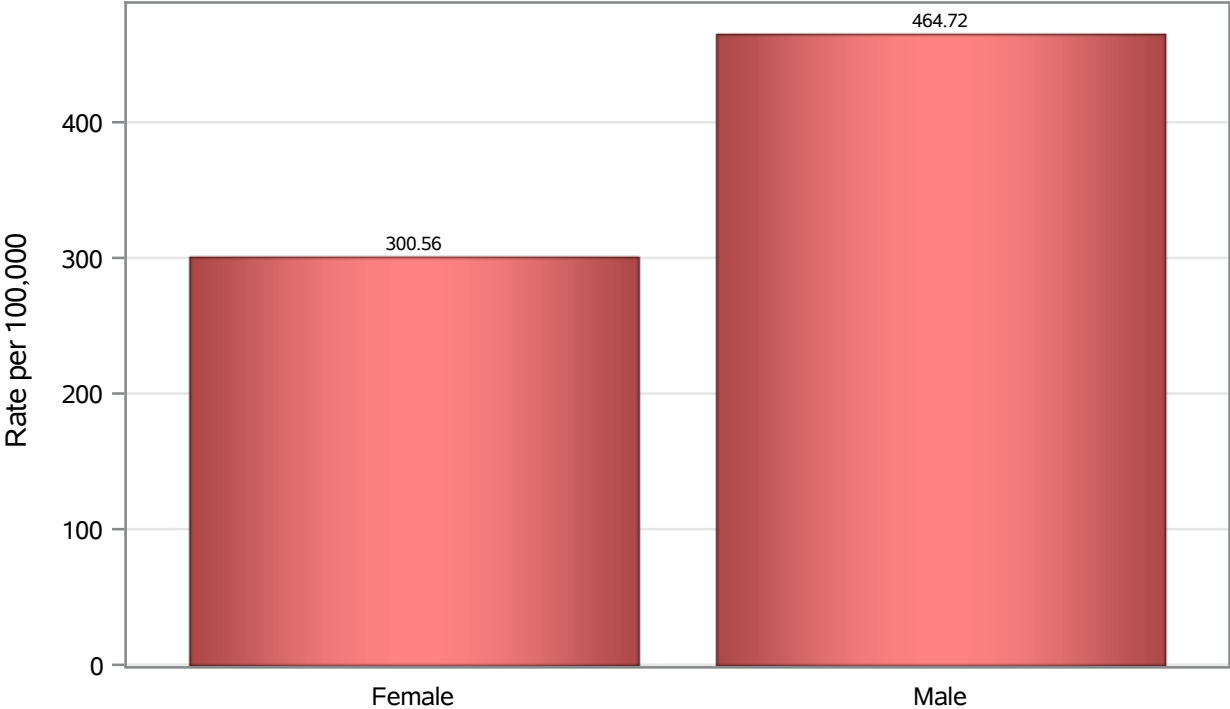
Hospitalization Birth Sex Rates in Henderson



Investigations are ongoing; data are subject to change.
Reporting through 09MAY2022

Henderson zip codes include 89002, 89011, 89012, 89014, 89015, 89044, 89052, 89074, 89119, 89120, 89122, 89123, 89124, 89183.

Death Birth Sex Rates in Henderson



Investigations are ongoing; data are subject to change.
Reporting through 09MAY2022

Henderson zip codes include 89002, 89011, 89012, 89014, 89015, 89044, 89052, 89074, 89119, 89120, 89122, 89123, 89124, 89183.

Table 7: Birth Sex and COVID19 in Henderson

Case Status	Birth Sex Categories	N	%	Population	Rate per 100,000
Cases	Female	55521	52.0	266833	20807
	Male	50546	47.3	264892	19082
	Unknown	683	0.6	.	.
Hospitalizations	Female	2771	44.4	266833	1038.5
	Male	3452	55.4	264892	1303.2
	Unknown	12	0.2	.	.
Deaths	Female	802	39.3	266833	300.56
	Male	1231	60.3	264892	464.72
	Unknown	8	0.4	.	.

Note1: Population data source for calculating rate estimates: U.S. Census Bureau, ACS 5-year estimate.

Note2: Rates for categories with fewer than 12 cases are suppressed due to high relative standard error.

Note3: Hospitalizations are regardless of deceased status; Deaths are regardless of hospitalization status

Investigations are ongoing; data are subject to change.

Reporting through 09MAY2022

Henderson zip codes include 89002, 89011, 89012, 89014, 89015, 89044, 89052, 89074, 89119, 89120, 89122, 89123, 89124, 89183.