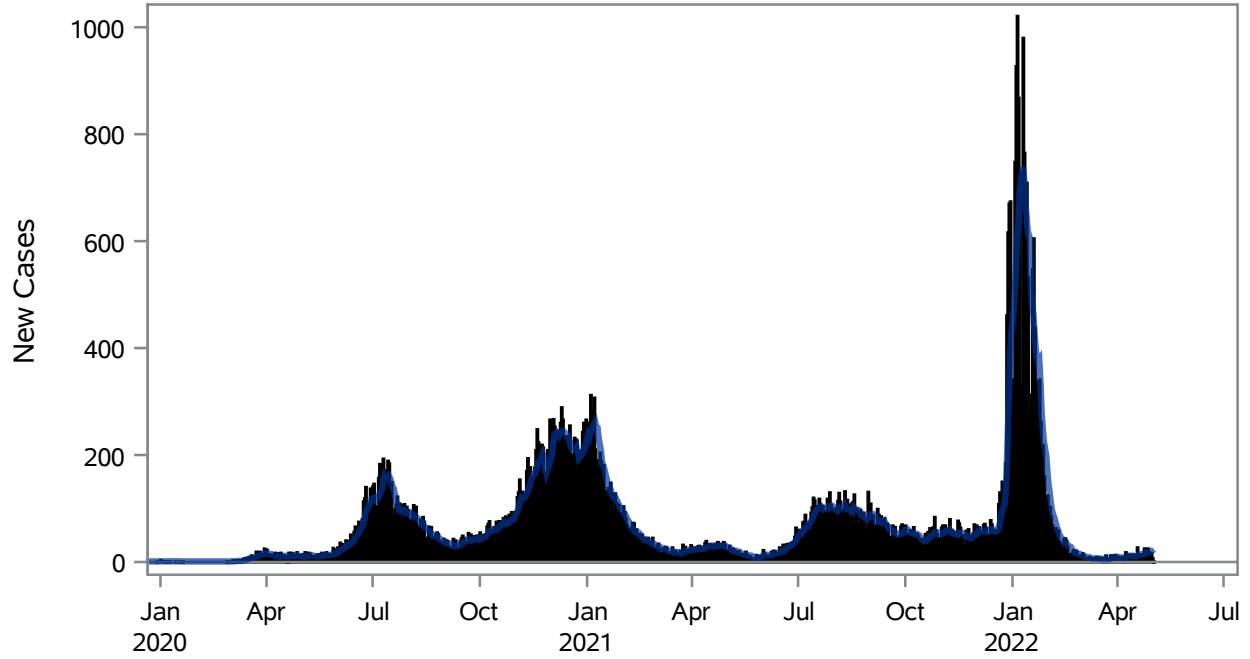


COVID19 Cases for North Las Vegas, 7-Day Moving Average



■ New Cases — 7-Day Moving Average

Investigations are ongoing; data are subject to change.

Reporting through 02MAY2022

North Las Vegas zip codes include 89030, 89031, 89032, 89033, 89036, 89081, 89084, 89085, 89086, 89087.

Table 1: New COVID19 Cases and 7-Day Moving Average in North Las Vegas, Previous Two Weeks

Date (Daily)	New Cases	7-Day Moving Average
19APR2022	11	13.14
20APR2022	14	13.86
21APR2022	14	13.86
22APR2022	14	14.43
23APR2022	11	14.29
24APR2022	25	16.57
25APR2022	18	15.29
26APR2022	24	17.14
27APR2022	25	18.71
28APR2022	17	19.14
29APR2022	17	19.57
30APR2022	16	20.29

Note1: Event Date is calculated as follows based on completed information:

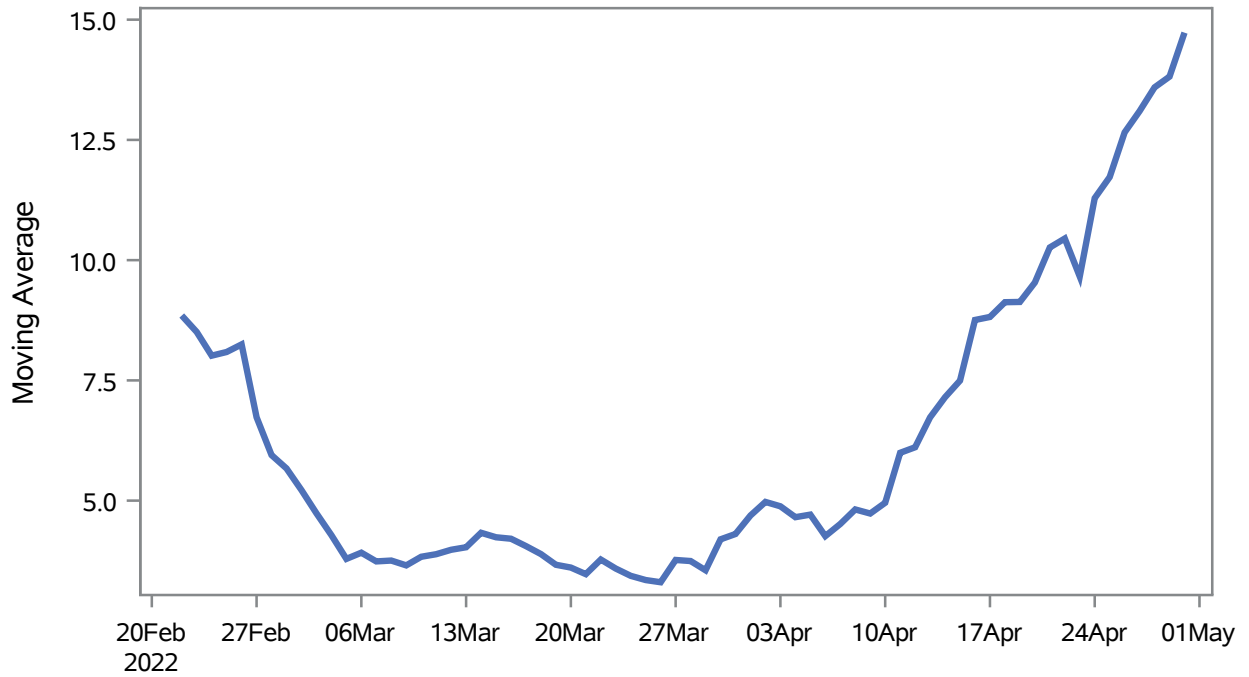
1) Disease onset date 2) Disease diagnosis date 3) Lab result collection date 4) Report date to SNHD.

Investigations are ongoing; data are subject to change.

Reporting through 02MAY2022

North Las Vegas zip codes include 89030, 89031, 89032, 89033, 89036, 89081, 89084, 89085, 89086, 89087.

Percent of People Receiving COVID-19 Viral Tests Who Have Positive Results in North Las Vegas



Investigations are ongoing; data are subject to change.

Reporting through 02MAY2022

North Las Vegas zip codes include 89030, 89031, 89032, 89033, 89036, 89081, 89084, 89085, 89086, 89087.

Table 2: Percent of People Receiving COVID-19 Viral Tests Who Have Positive Results in North Las Vegas

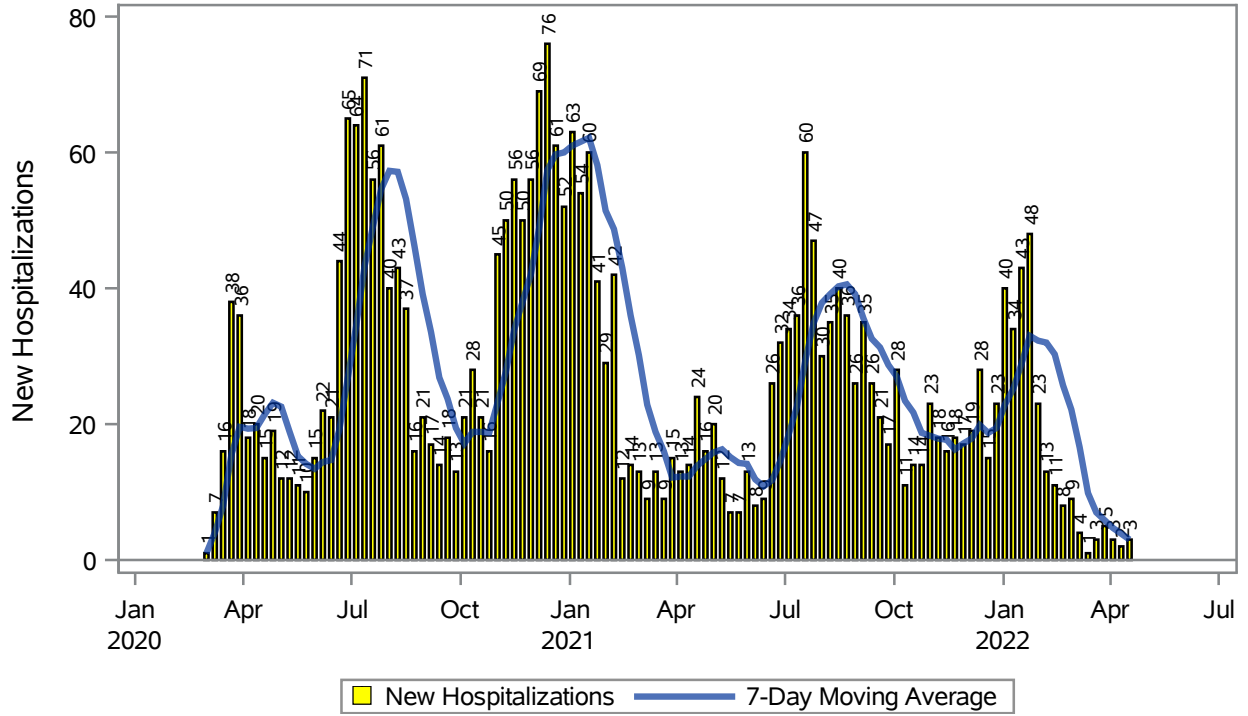
Collection Date	Positive	Negative	Equivocal	Total	% Positivity	7-Day Moving Average
16APR2022	23	143		166	13.86	8.76
17APR2022	11	119		130	8.46	8.82
18APR2022	32	238		270	11.85	9.13
19APR2022	16	303		319	5.02	9.13
20APR2022	20	183		203	9.85	9.53
21APR2022	28	199	1	228	12.28	10.3
22APR2022	22	164		186	11.83	10.4
23APR2022	15	165		180	8.33	9.66
24APR2022	28	113		141	19.86	11.3
25APR2022	37	209	2	248	14.92	11.7
26APR2022	28	215		243	11.52	12.7
27APR2022	36	242		278	12.95	13.1
28APR2022	31	166		197	15.74	13.6
29APR2022	15	97		112	13.39	13.8
30APR2022	.	6		6	.	14.7

Note: Testing Data includes a 3 day delay

**Investigations are ongoing; data are subject to change.
Reporting through 02MAY2022**

North Las Vegas zip codes include 89030, 89031, 89032, 89033, 89036, 89081, 89084, 89085, 89086, 89087.

COVID19 Hospitalizations for North Las Vegas, 7-Day Moving Average



Investigations are ongoing; data are subject to change.

Reporting through 02MAY2022

North Las Vegas zip codes include 89030, 89031, 89032, 89033, 89036, 89081, 89084, 89085, 89086, 89087.

Table 3: New COVID19-Related Hospitalizations and 7-Day Moving Average in North Las Vegas, previous month

Week	Hospitalizations	7-Day Moving Average
03APR2022	3	4.71
10APR2022	2	3.86
17APR2022	3	3.00

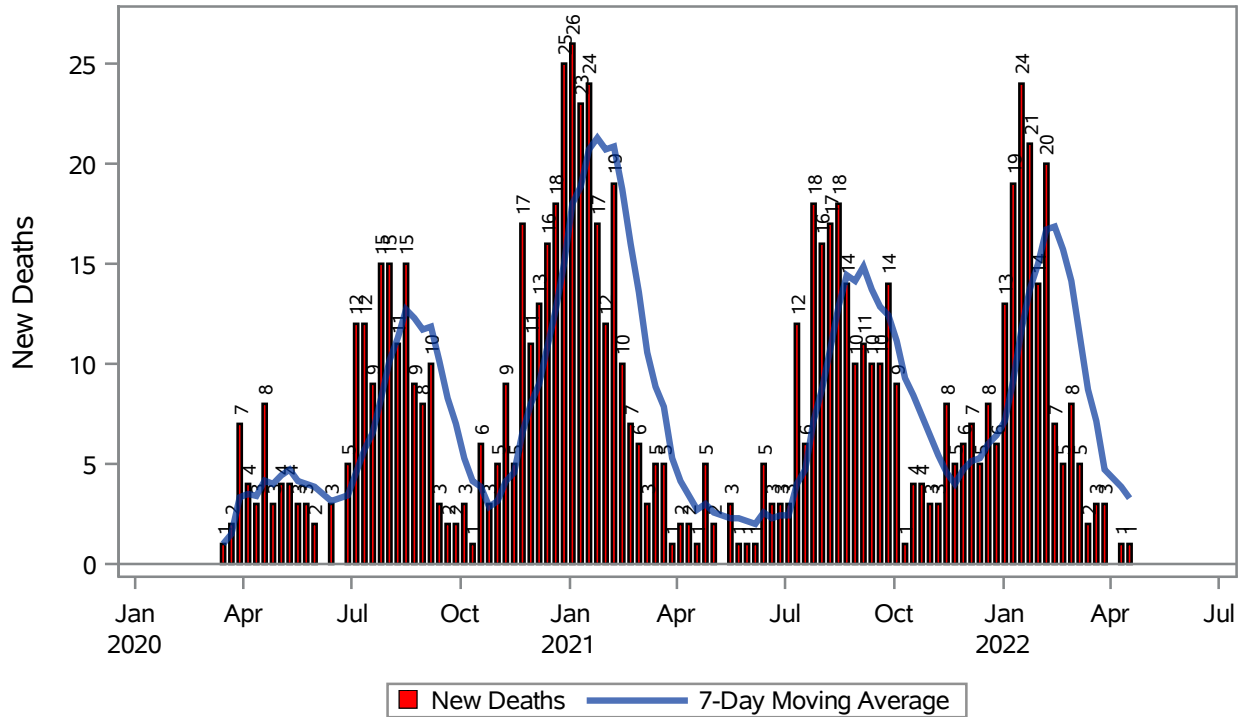
Note1: Admission Date is calculated as follows based on completed information:
A) COVID19 Case is hospitalized B) COVID19 Case has a hospital admission date.

If admission date is missing, then the following is substituted temporarily, in order:
1) Disease onset date 2) Disease diagnosis date 3) Lab result collection date 4) Report date to SNHD.

**Investigations are ongoing; data are subject to change.
Reporting through 02MAY2022**

North Las Vegas zip codes include 89030, 89031, 89032, 89033, 89036, 89081, 89084, 89085, 89086, 89087.

COVID19 Deaths for North Las Vegas, 7-Day Moving Average



Investigations are ongoing; data are subject to change.

Reporting through 02MAY2022

North Las Vegas zip codes include 89030, 89031, 89032, 89033, 89036, 89081, 89084, 89085, 89086, 89087.

Table 4: New COVID19-Related Deaths and 7-Day Moving Average in North Las Vegas, Previous Month

Week	Deaths	7-Day Moving Average
10APR2022	1	3.86
17APR2022	1	3.29

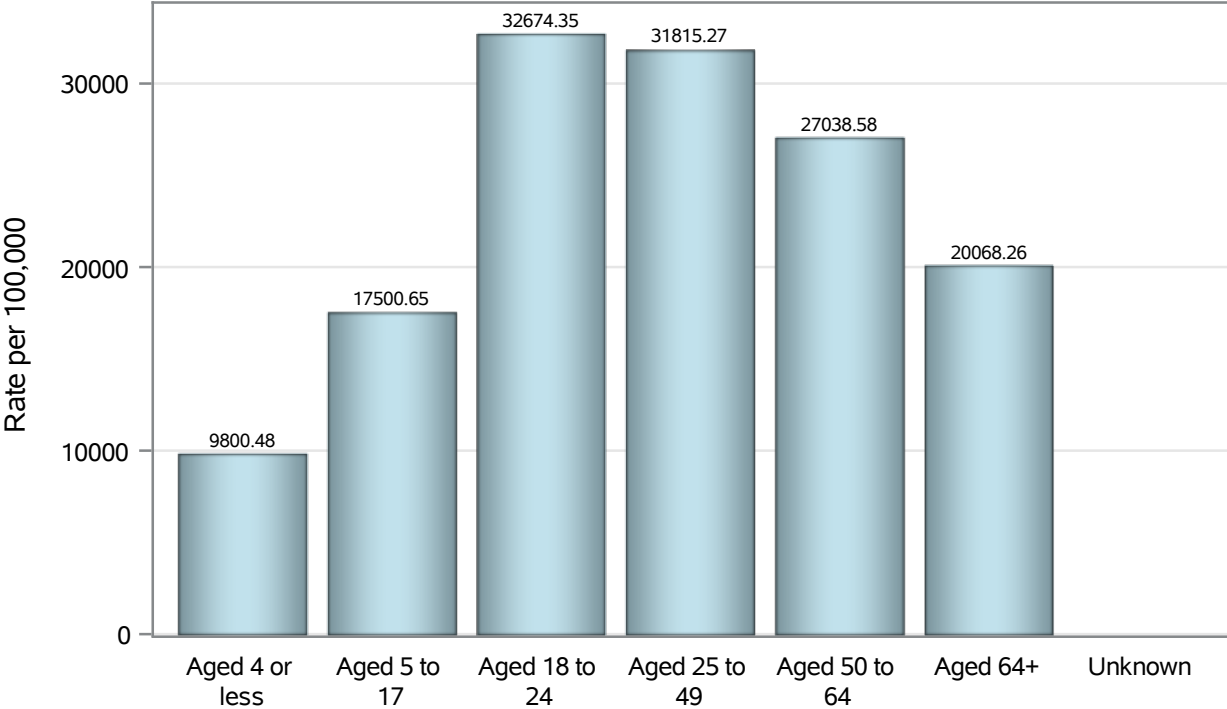
Note1: Date of Death is calculated as follows based on completed information:
A) COVID19 Case is reported as deceased B) COVID19 Case has a reported date of death.

If date of death is missing, then the following is substituted temporarily, in order:
1) Disease onset date 2) Disease diagnosis date
3) Lab result collection date 4) Report date to SNHD.

**Investigations are ongoing; data are subject to change.
Reporting through 02MAY2022**

North Las Vegas zip codes include 89030, 89031, 89032, 89033, 89036, 89081, 89084, 89085, 89086, 89087.

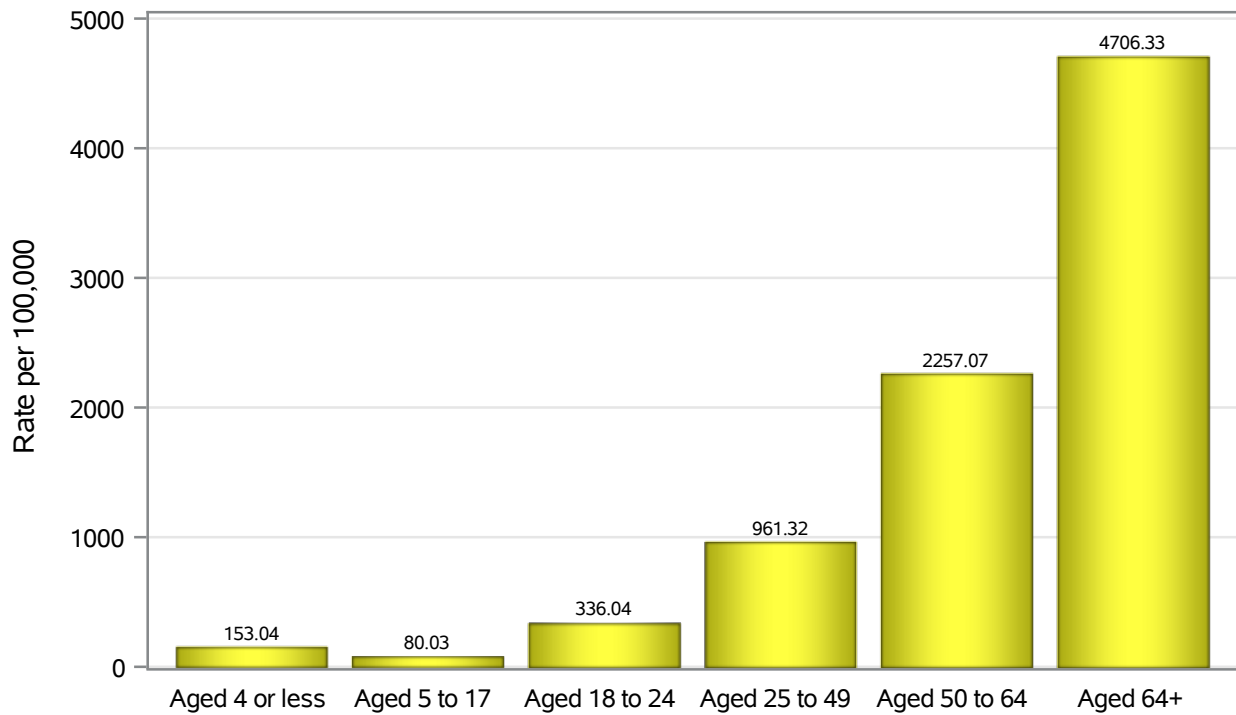
Case Age Rates in North Las Vegas



Investigations are ongoing; data are subject to change.
Reporting through 02MAY2022

North Las Vegas zip codes include 89030, 89031, 89032, 89033, 89036, 89081, 89084, 89085, 89086, 89087.

Hospitalization Age Rates in North Las Vegas

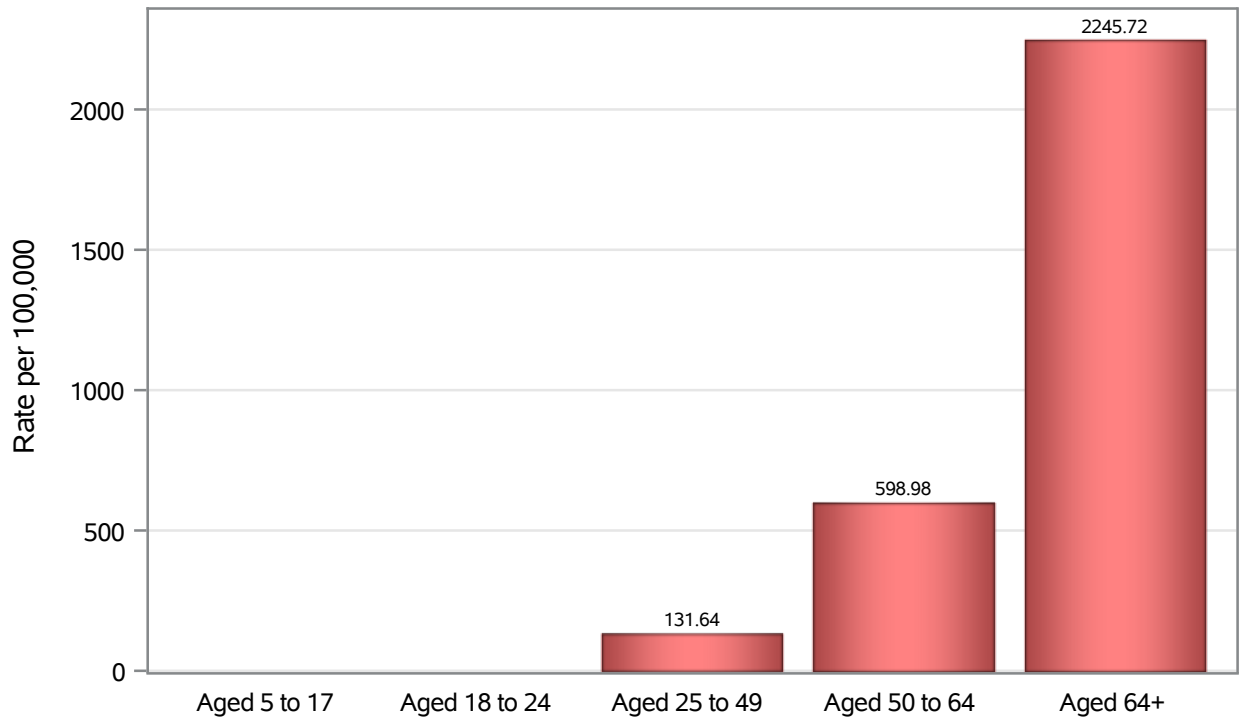


Investigations are ongoing; data are subject to change.

Reporting through 02MAY2022

North Las Vegas zip codes include 89030, 89031, 89032, 89033, 89036, 89081, 89084, 89085, 89086, 89087.

Death Age Rates in North Las Vegas



Investigations are ongoing; data are subject to change.

Reporting through 02MAY2022

North Las Vegas zip codes include 89030, 89031, 89032, 89033, 89036, 89081, 89084, 89085, 89086, 89087.

Table 5: Age and COVID19 in North Las Vegas

Case Status	Age Categories	N	%	Population	Rate per 100,000
Cases	Aged 4 or less	1729	2.9	17,642	9800.5
	Aged 5 to 17	8747	14.8	49,981	17501
	Aged 18 to 24	7487	12.7	22,914	32674
	Aged 25 to 49	26344	44.6	82,803	31815
	Aged 50 to 64	9931	16.8	36,729	27039
	Aged 64+	4763	8.1	23,734	20068
	Unknown	8	0.0	.	.
Hospitalizations	Aged 4 or less	27	0.9	17,642	153.04
	Aged 5 to 17	40	1.4	49,981	80.03
	Aged 18 to 24	77	2.7	22,914	336.04
	Aged 25 to 49	796	27.6	82,803	961.32
	Aged 50 to 64	829	28.7	36,729	2257.1
	Aged 64+	1117	38.7	23,734	4706.3
	Deaths	Aged 5 to 17	1	0.1	49,981
Aged 18 to 24		2	0.2	22,914	.
Aged 25 to 49		109	12.6	82,803	131.64
Aged 50 to 64		220	25.4	36,729	598.98
Aged 64+		533	61.6	23,734	2245.7

Note1: Population data source for calculating rate estimates: U.S. Census Bureau, ACS 5-year estimate.

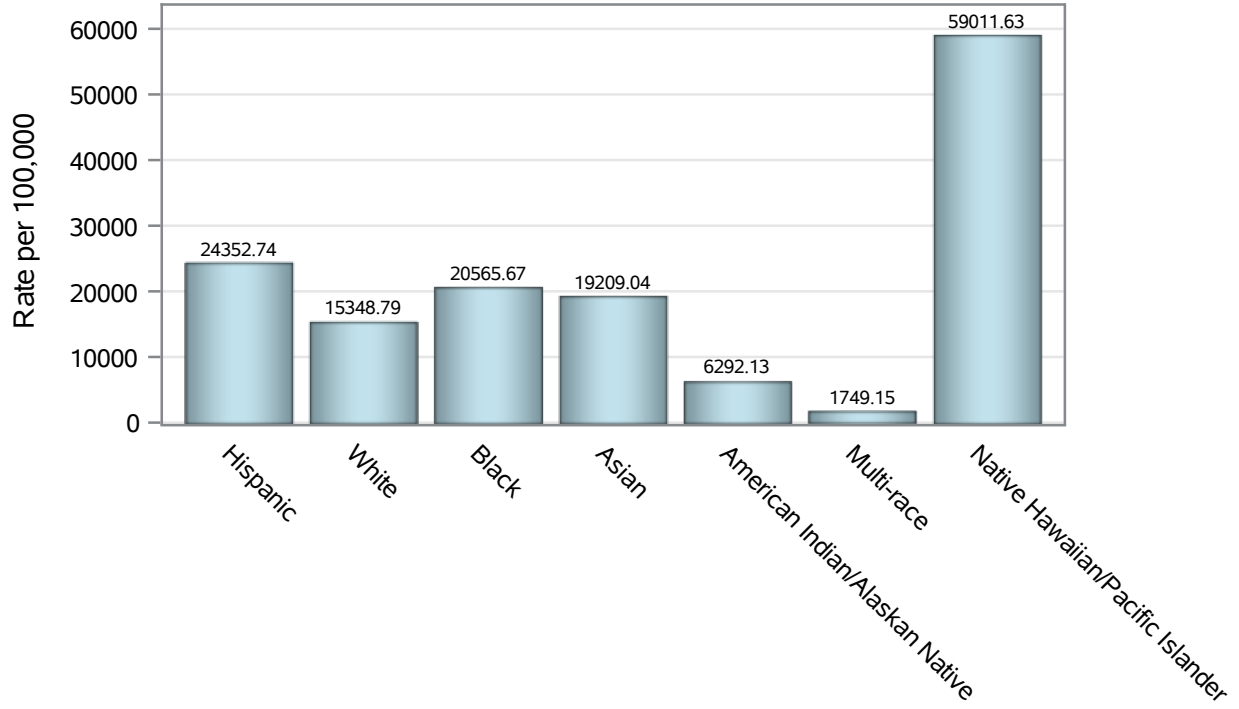
Note2: Rates for categories with fewer than 12 cases are suppressed due to high relative standard error.

Note3: Hospitalizations are regardless of deceased status; Deaths are regardless of hospitalization status

**Investigations are ongoing; data are subject to change.
Reporting through 02MAY2022**

North Las Vegas zip codes include 89030, 89031, 89032, 89033, 89036, 89081, 89084, 89085, 89086, 89087.

Case Race/Ethnicity Rates in North Las Vegas

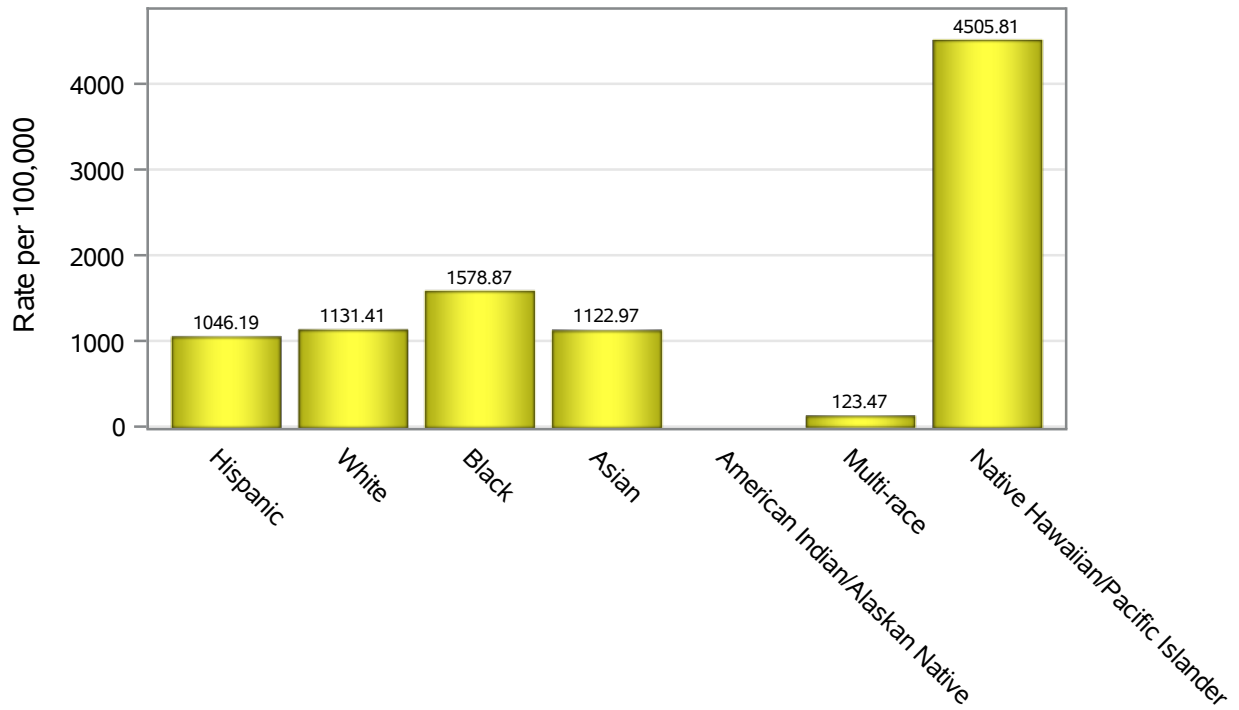


Investigations are ongoing; data are subject to change.

Reporting through 02MAY2022

North Las Vegas zip codes include 89030, 89031, 89032, 89033, 89036, 89081, 89084, 89085, 89086, 89087.

Hospitalization Race/Ethnicity Rates in North Las Vegas

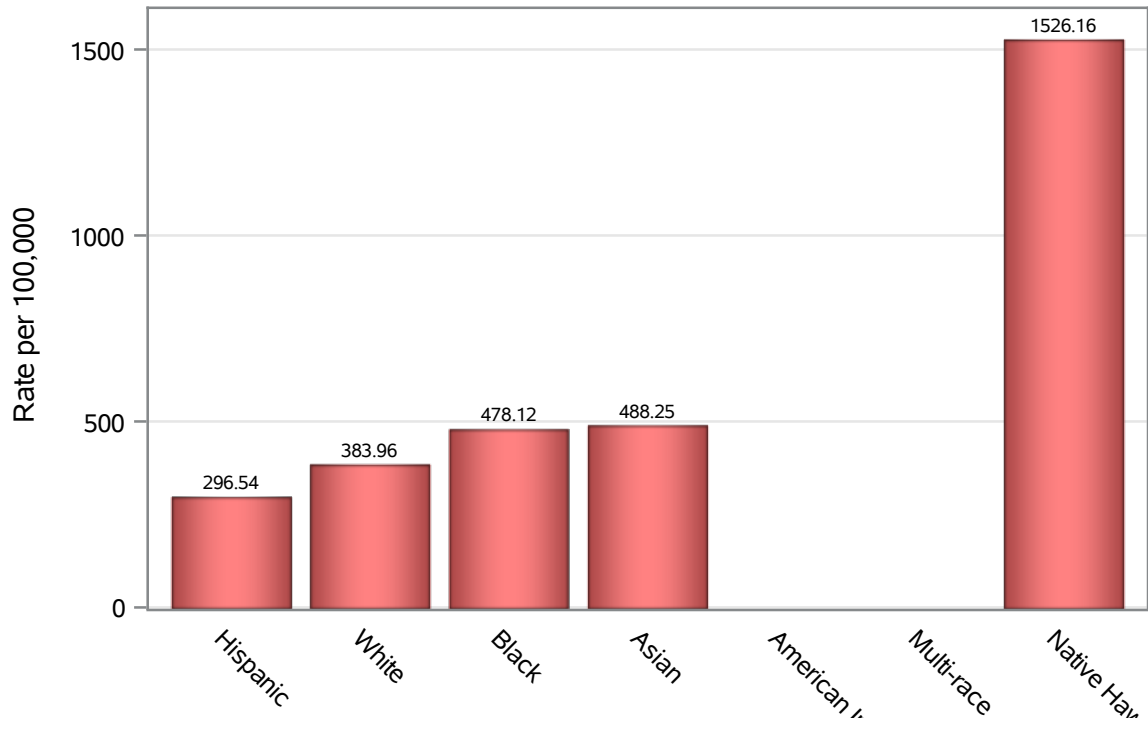


Investigations are ongoing; data are subject to change.

Reporting through 02MAY2022

North Las Vegas zip codes include 89030, 89031, 89032, 89033, 89036, 89081, 89084, 89085, 89086, 89087.

Death Race/Ethnicity Rates in North Las Vegas



Investigations are ongoing; data are subject to change.

Reporting through 02MAY2022

North Las Vegas zip codes include 89030, 89031, 89032, 89033, 89036, 89081, 89084, 89085, 89086, 89087.

Table 6: Race/Ethnicity and COVID19 in North Las Vegas

Case Status	Race Ethnicity Categories	N	%	Population	Rate per 100,000
Cases	Hispanic	23487	39.8	96,445	24353
	White	9754	16.5	63,549	15349
	Black	9678	16.4	47,059	20566
	Asian	2754	4.7	14,337	19209
	American Indian/Alaskan Native	56	0.1	890	6292.1
	Multi-race	170	0.3	9,719	1749.2
	Native Hawaiian/Pacific Islander	812	1.4	1,376	59012
	Unknown	12298	20.8	.	.
Hospitalizations	Hispanic	1009	35.0	96,445	1046.2
	White	719	24.9	63,549	1131.4
	Black	743	25.7	47,059	1578.9
	Asian	161	5.6	14,337	1123.0
	American Indian/Alaskan Native	11	0.4	890	.
	Multi-race	12	0.4	9,719	123.47
	Native Hawaiian/Pacific Islander	62	2.1	1,376	4505.8
	Unknown	169	5.9	.	.
Deaths	Hispanic	286	33.1	96,445	296.54
	White	244	28.2	63,549	383.96
	Black	225	26.0	47,059	478.12
	Asian	70	8.1	14,337	488.25
	American Indian/Alaskan Native	6	0.7	890	.
	Multi-race	6	0.7	9,719	.
	Native Hawaiian/Pacific Islander	21	2.4	1,376	1526.2
	Unknown	7	0.8	.	.

Note1: Population data source for calculating rate estimates: U.S. Census Bureau, ACS 5-year estimate.

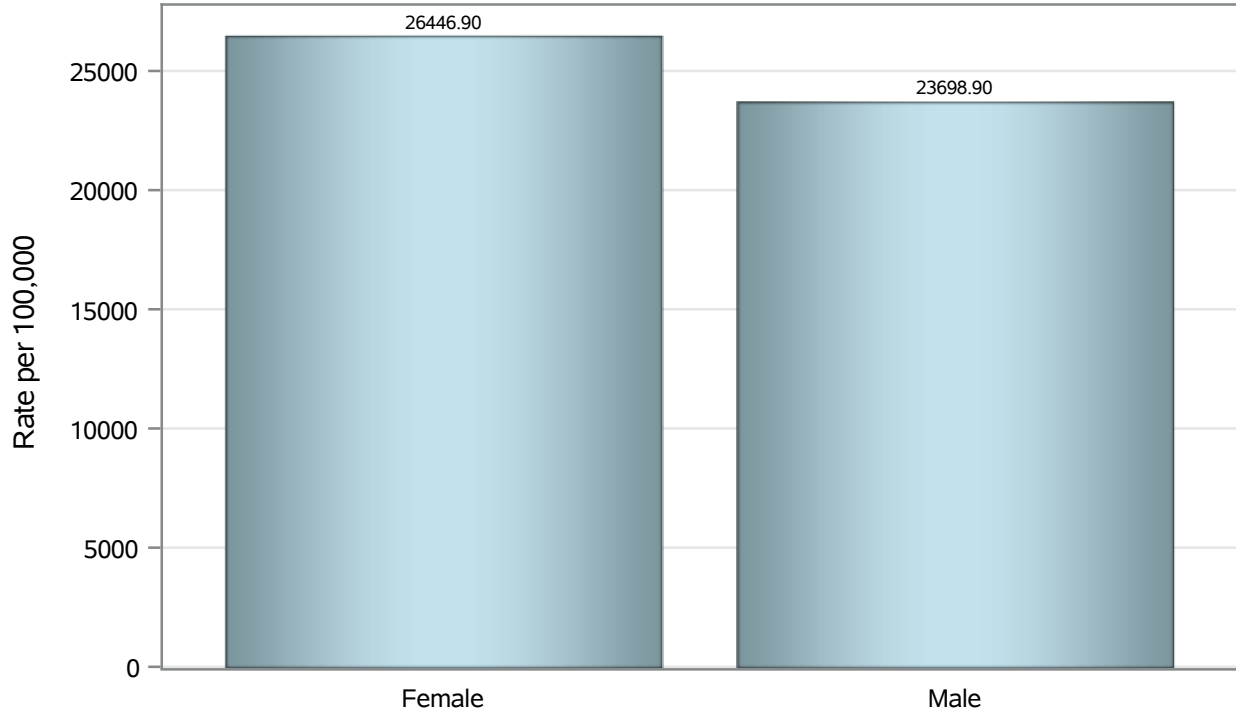
Note2: Rates for categories with fewer than 12 cases are suppressed due to high relative standard error.

Note3: Hospitalizations are regardless of deceased status; Deaths are regardless of hospitalization status

**Investigations are ongoing; data are subject to change.
Reporting through 02MAY2022**

North Las Vegas zip codes include 89030, 89031, 89032, 89033, 89036, 89081, 89084, 89085, 89086, 89087.

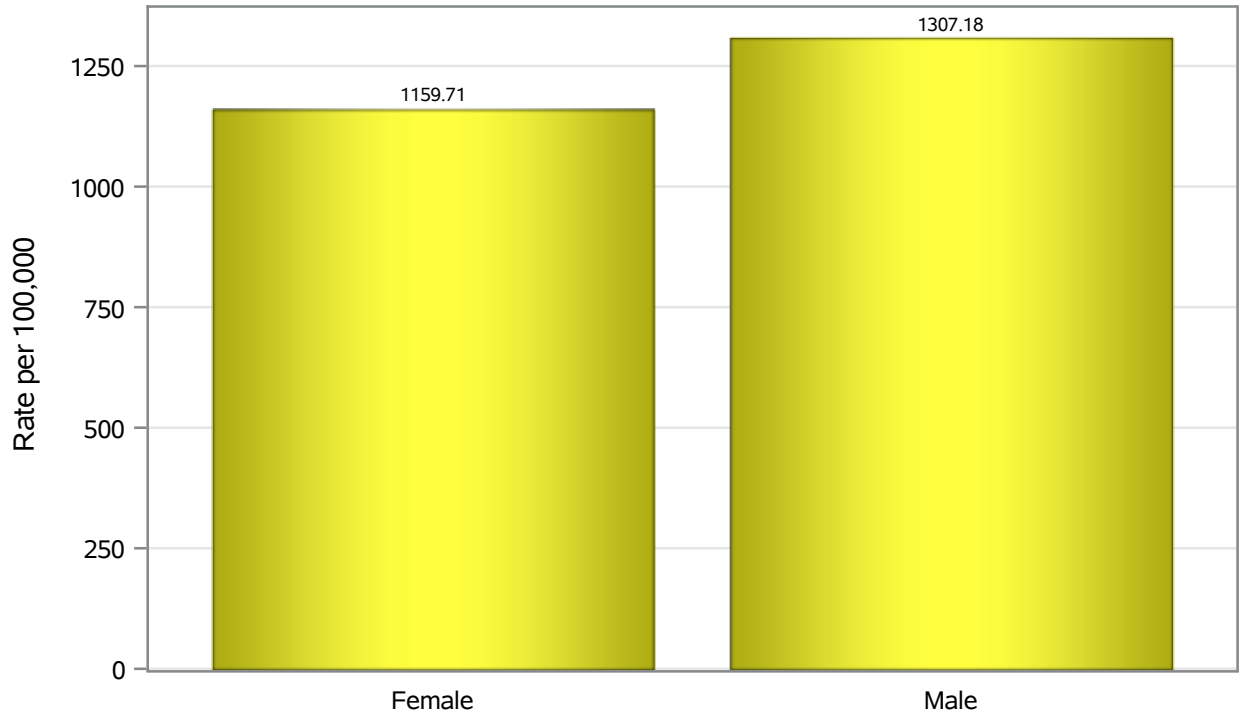
Case Birth Sex Rates in North Las Vegas



Investigations are ongoing; data are subject to change.
Reporting through 02MAY2022

North Las Vegas zip codes include 89030, 89031, 89032, 89033, 89036, 89081, 89084, 89085, 89086, 89087.

Hospitalization Birth Sex Rates in North Las Vegas

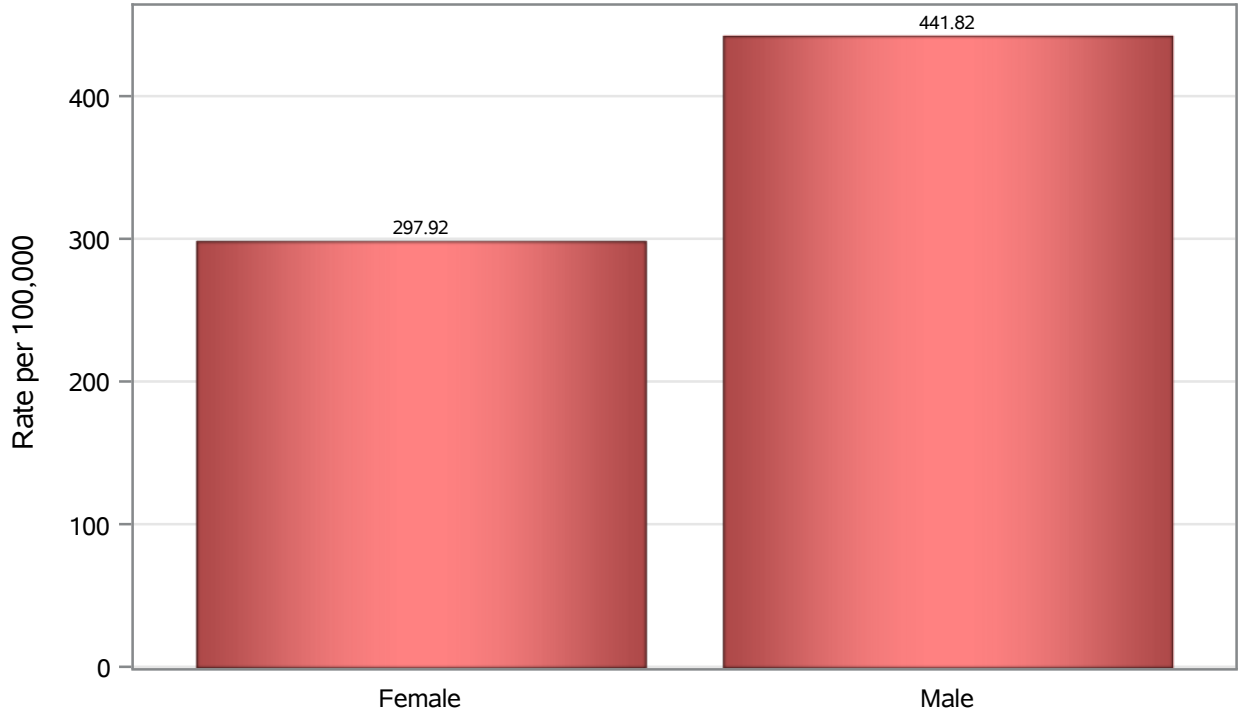


Investigations are ongoing; data are subject to change.

Reporting through 02MAY2022

North Las Vegas zip codes include 89030, 89031, 89032, 89033, 89036, 89081, 89084, 89085, 89086, 89087.

Death Birth Sex Rates in North Las Vegas



Investigations are ongoing; data are subject to change.

Reporting through 02MAY2022

North Las Vegas zip codes include 89030, 89031, 89032, 89033, 89036, 89081, 89084, 89085, 89086, 89087.

Table 7: Birth Sex and COVID19 in North Las Vegas

Case Status	Birth Sex Categories	N	%	Population	Rate per 100,000
Cases	Female	31425	53.3	118823	26447
	Male	27249	46.2	114980	23699
	Unknown	335	0.6	.	.
Hospitalizations	Female	1378	47.7	118823	1159.7
	Male	1503	52.1	114980	1307.2
	Unknown	5	0.2	.	.
Deaths	Female	354	40.9	118823	297.92
	Male	508	58.7	114980	441.82
	Unknown	3	0.3	.	.

Note1: Population data source for calculating rate estimates: U.S. Census Bureau, ACS 5-year estimate.

Note2: Rates for categories with fewer than 12 cases are suppressed due to high relative standard error.

Note3: Hospitalizations are regardless of deceased status; Deaths are regardless of hospitalization status

**Investigations are ongoing; data are subject to change.
Reporting through 02MAY2022**

North Las Vegas zip codes include 89030, 89031, 89032, 89033, 89036, 89081, 89084, 89085, 89086, 89087.