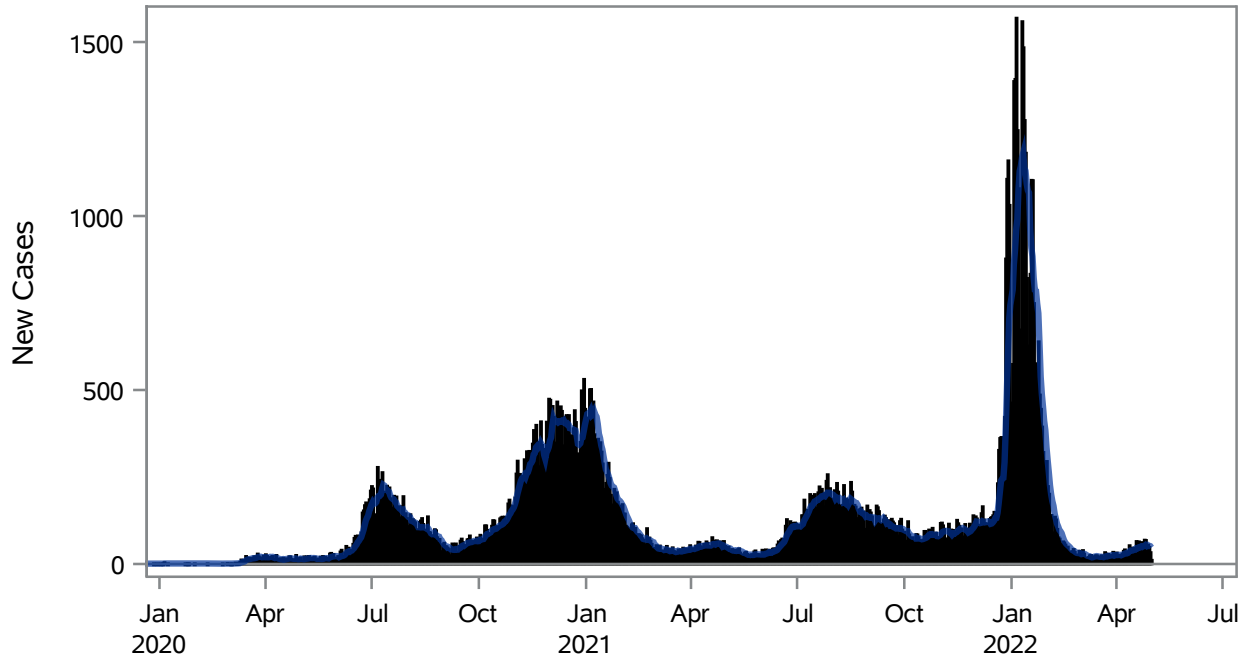


COVID19 Cases for Henderson, 7-Day Moving Average



■ New Cases — 7-Day Moving Average

Investigations are ongoing; data are subject to change.

Reporting through 02MAY2022

Henderson zip codes include 89002, 89011, 89012, 89014, 89015, 89044, 89052, 89074, 89119, 89120, 89122, 89123, 89124, 89183.

Table 1: New COVID19 Cases and 7-Day Moving Average in Henderson, Previous Two Weeks

Date (Daily)	New Cases	7-Day Moving Average
19APR2022	50	44.86
20APR2022	64	47.43
21APR2022	37	47.43
22APR2022	62	49.86
23APR2022	39	48.86
24APR2022	42	51.29
25APR2022	69	51.86
26APR2022	68	54.43
27APR2022	44	51.57
28APR2022	55	54.14
29APR2022	48	52.14
30APR2022	33	51.29

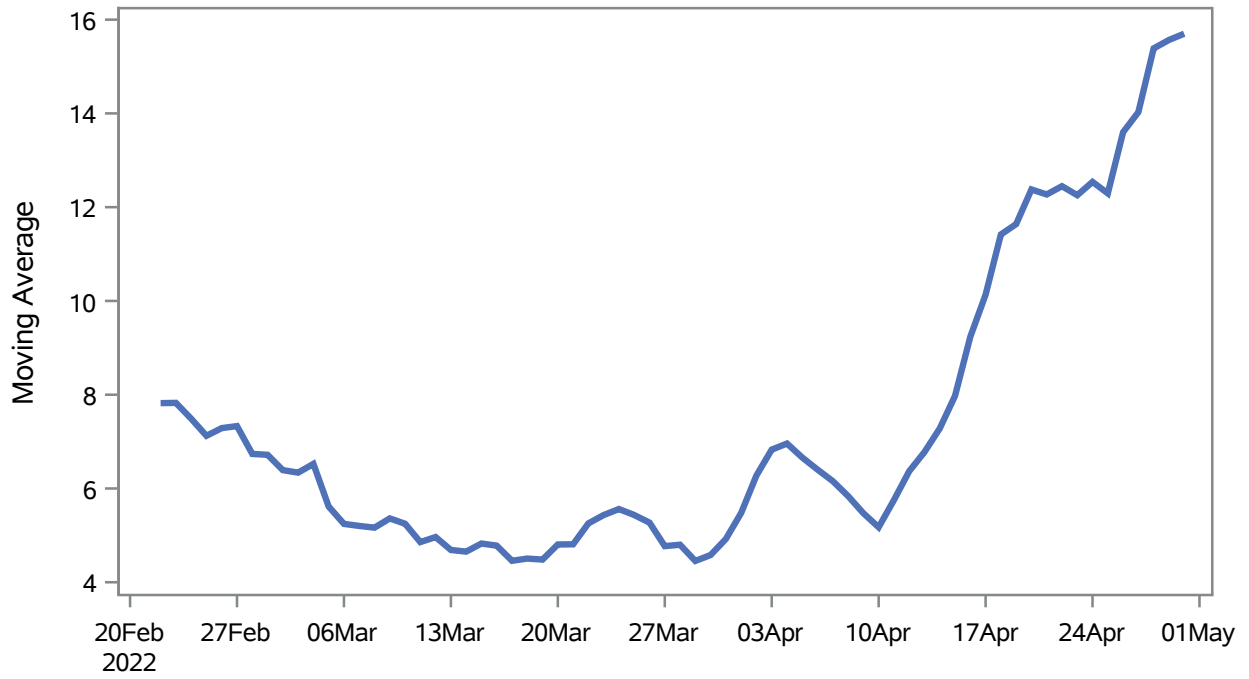
Note1: Event Date is calculated as follows based on completed information:
1) Disease onset date 2) Disease diagnosis date 3) Lab result collection date 4) Report date to SNHD.

Investigations are ongoing; data are subject to change.

Reporting through 02MAY2022

Henderson zip codes include 89002, 89011, 89012, 89014, 89015, 89044, 89052, 89074, 89119, 89120, 89122, 89123, 89124, 89183.

Percent of People Receiving COVID-19 Viral Tests Who Have Positive Results in Henderson



Investigations are ongoing; data are subject to change.

Reporting through 02MAY2022

Henderson zip codes include 89002, 89011, 89012, 89014, 89015, 89044, 89052, 89074, 89119, 89120, 89122, 89123, 89124, 89183.

Table 2: Percent of People Receiving COVID-19 Viral Tests Who Have Positive Results in Henderson

Collection Date	Positive	Negative	Equivocal	Total	% Positivity	7-Day Moving Average
16APR2022	38	198		236	16.10	9.24
17APR2022	17	134		151	11.26	10.1
18APR2022	79	354		433	18.24	11.4
19APR2022	37	350	1	388	9.54	11.6
20APR2022	47	346		393	11.96	12.4
21APR2022	28	335		363	7.71	12.3
22APR2022	42	299		341	12.32	12.4
23APR2022	31	179		210	14.76	12.3
24APR2022	29	190		219	13.24	12.5
25APR2022	63	317	1	381	16.54	12.3
26APR2022	73	318		391	18.67	13.6
27APR2022	58	330		388	14.95	14.0
28APR2022	66	317		383	17.23	15.4
29APR2022	30	190	1	221	13.57	15.6
30APR2022	.	4		4	.	15.7

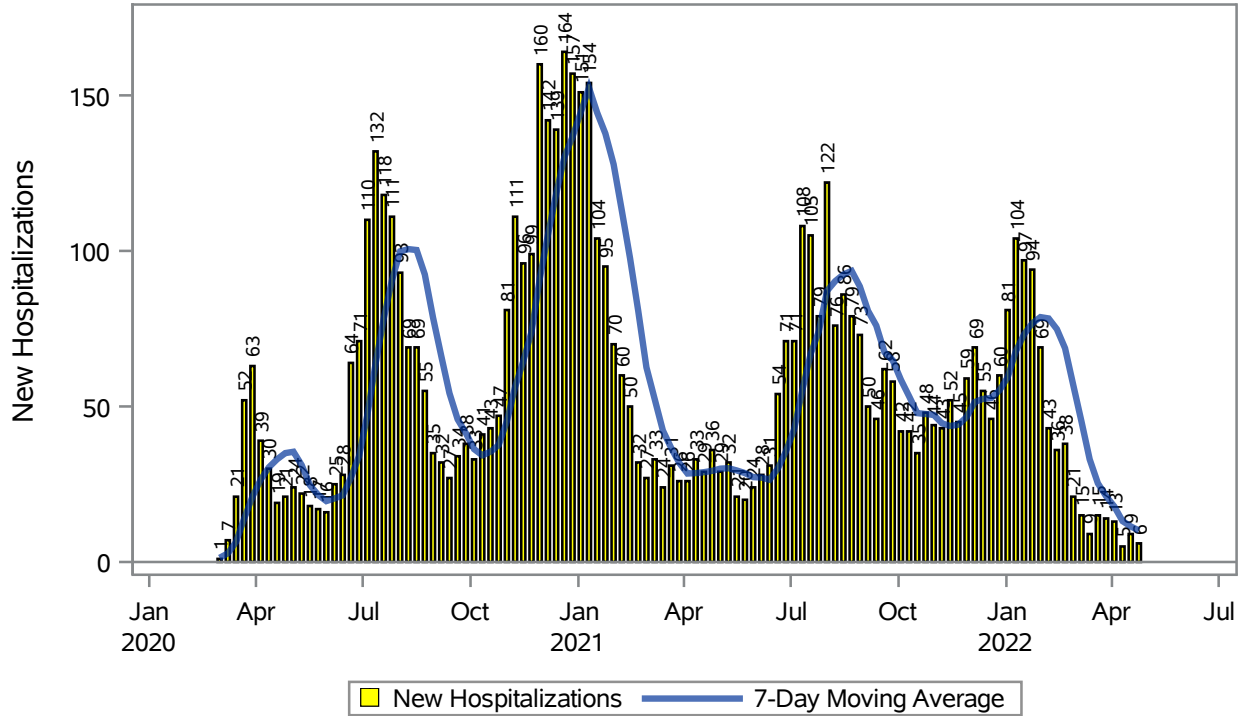
Note: Testing Data includes a 3 day delay

Investigations are ongoing; data are subject to change.

Reporting through 02MAY2022

Henderson zip codes include 89002, 89011, 89012, 89014, 89015, 89044, 89052, 89074, 89119, 89120, 89122, 89123, 89124, 89183.

COVID19 Hospitalizations for Henderson, 7-Day Moving Average



Investigations are ongoing; data are subject to change.

Reporting through 02MAY2022

Henderson zip codes include 89002, 89011, 89012, 89014, 89015, 89044, 89052, 89074, 89119, 89120, 89122, 89123, 89124, 89183.

Table 3: New COVID19-Related Hospitalizations and 7-Day Moving Average in Henderson, previous month

Week	Hospitalizations	7-Day Moving Average
03APR2022	13	17.9
10APR2022	5	13.1
17APR2022	9	11.4
24APR2022	6	10.1

Note1: Admission Date is calculated as follows based on completed information:
A) COVID19 Case is hospitalized B) COVID19 Case has a hospital admission date.

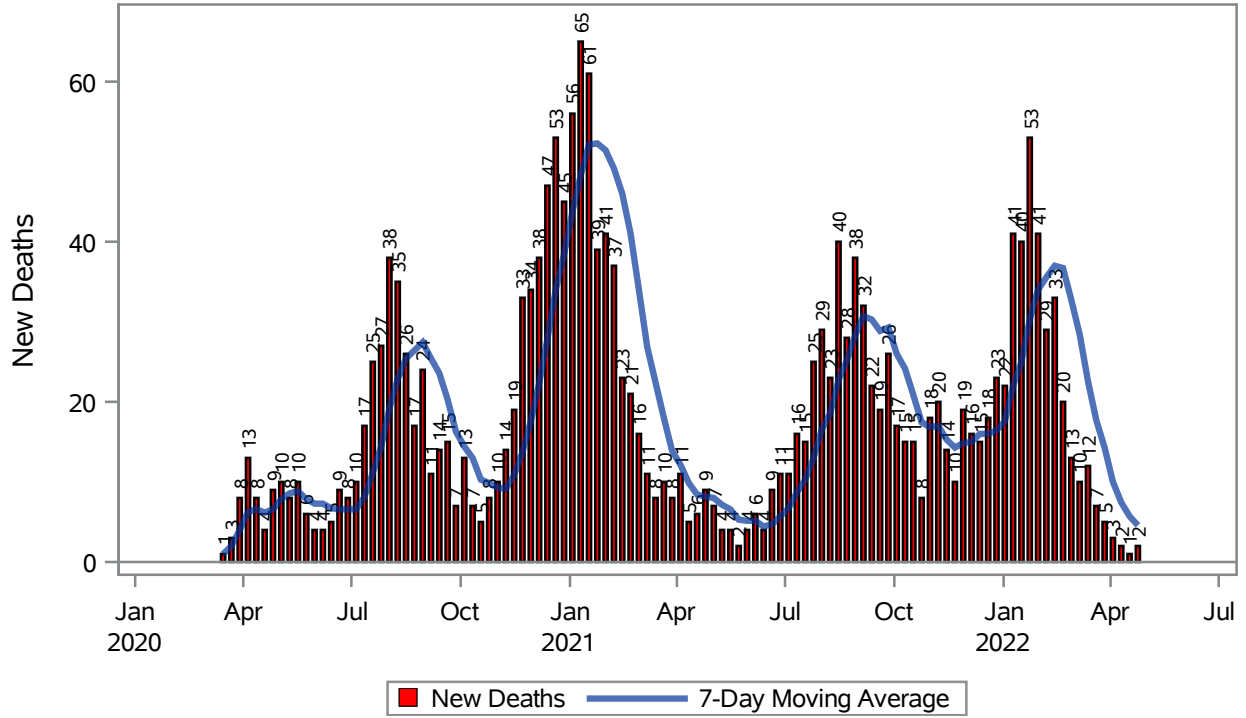
If admission date is missing, then the following is substituted temporarily, in order:
1) Disease onset date 2) Disease diagnosis date 3) Lab result collection date 4) Report date to SNHD.

Investigations are ongoing; data are subject to change.

Reporting through 02MAY2022

Henderson zip codes include 89002, 89011, 89012, 89014, 89015, 89044, 89052, 89074, 89119, 89120, 89122, 89123, 89124, 89183.

COVID19 Deaths for Henderson, 7-Day Moving Average



Investigations are ongoing; data are subject to change.

Reporting through 02MAY2022

Henderson zip codes include 89002, 89011, 89012, 89014, 89015, 89044, 89052, 89074, 89119, 89120, 89122, 89123, 89124, 89183.

Table 4: New COVID19-Related Deaths and 7-Day Moving Average in Henderson, Previous Month

Week	Deaths	7-Day Moving Average
03APR2022	3	10.0
10APR2022	2	7.43
17APR2022	1	5.71
24APR2022	2	4.57

Note1: Date of Death is calculated as follows based on completed information:
A) COVID19 Case is reported as deceased B) COVID19 Case has a reported date of death.

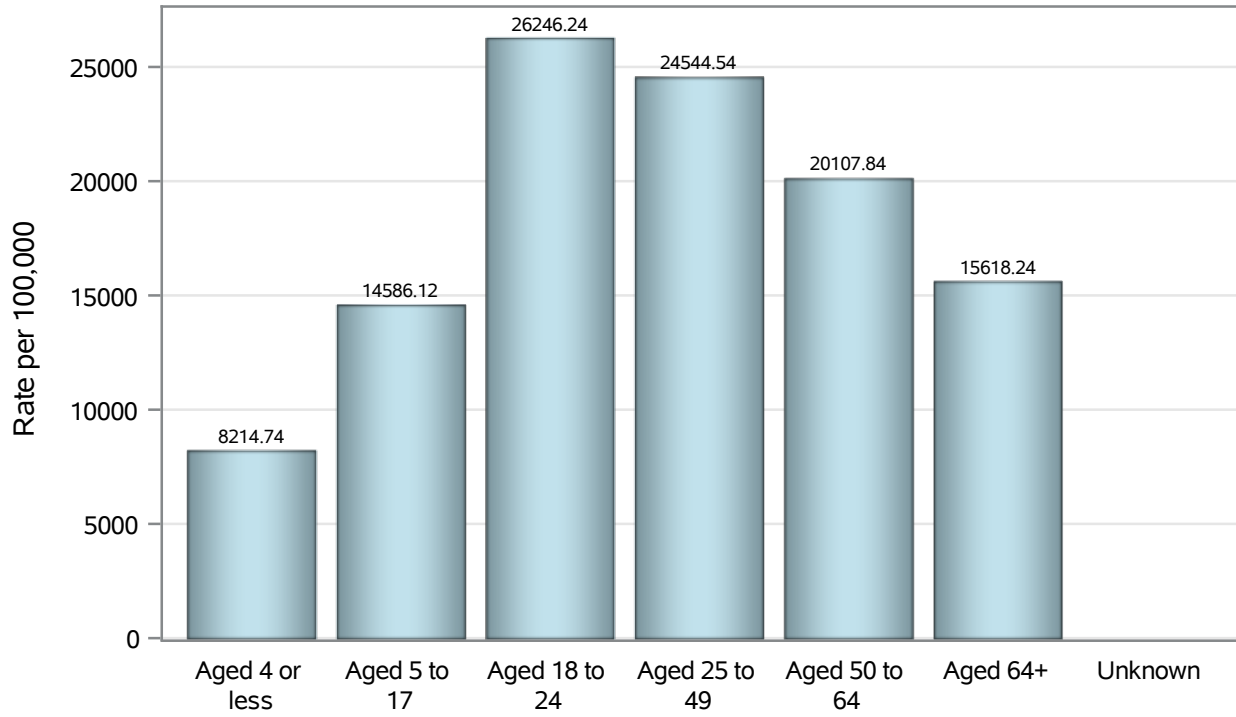
If date of death is missing, then the following is substituted temporarily, in order:
1) Disease onset date 2) Disease diagnosis date
3) Lab result collection date 4) Report date to SNHD.

Investigations are ongoing; data are subject to change.

Reporting through 02MAY2022

Henderson zip codes include 89002, 89011, 89012, 89014, 89015, 89044, 89052, 89074, 89119, 89120, 89122, 89123, 89124, 89183.

Case Age Rates in Henderson

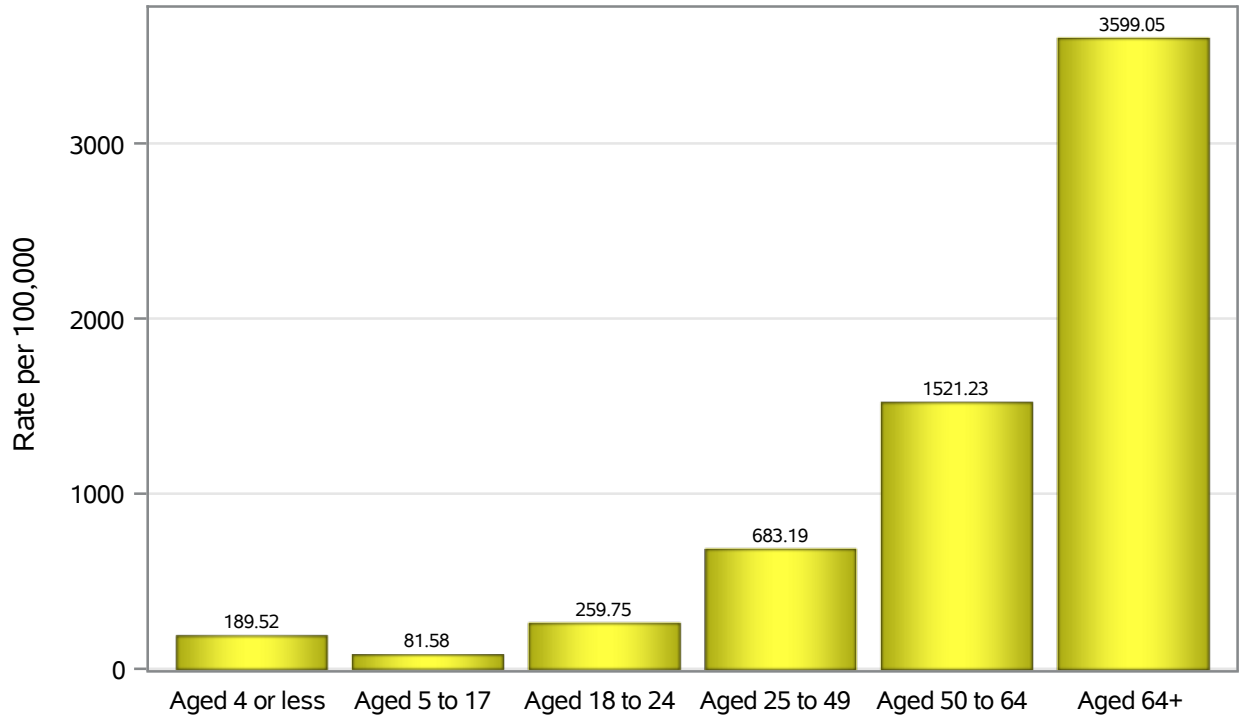


Investigations are ongoing; data are subject to change.

Reporting through 02MAY2022

Henderson zip codes include 89002, 89011, 89012, 89014, 89015, 89044, 89052, 89074, 89119, 89120, 89122, 89123, 89124, 89183.

Hospitalization Age Rates in Henderson

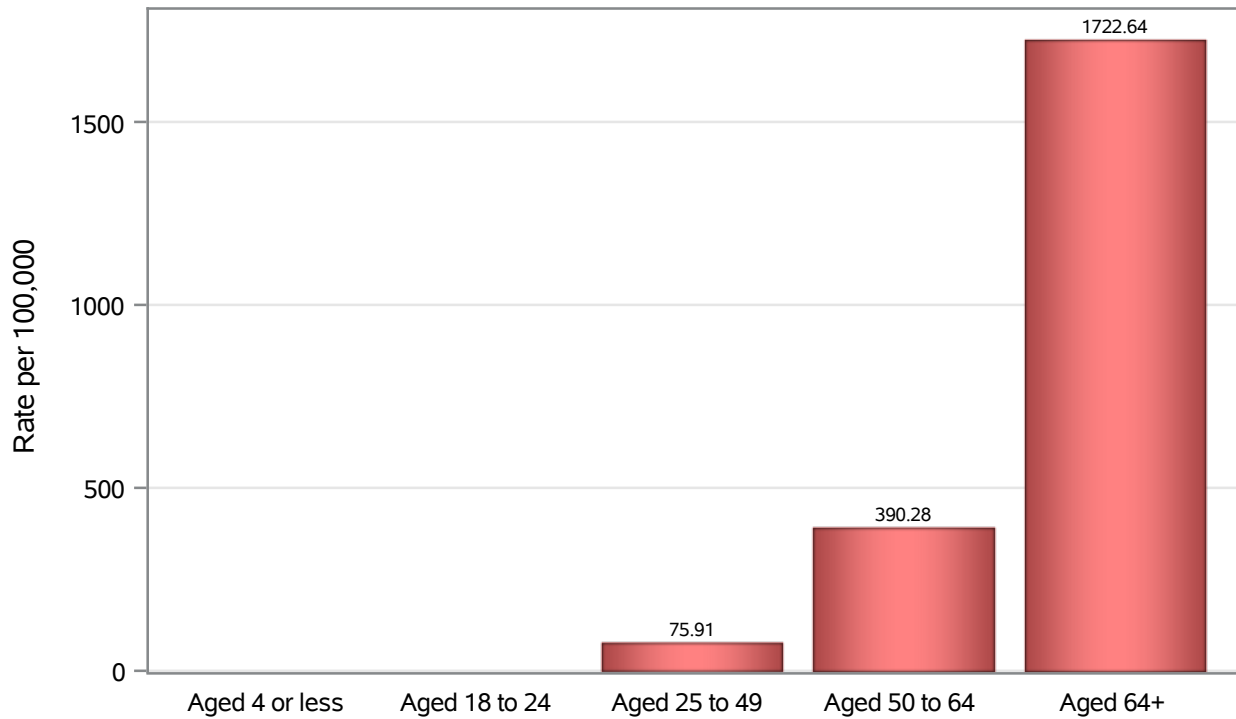


Investigations are ongoing; data are subject to change.

Reporting through 02MAY2022

Henderson zip codes include 89002, 89011, 89012, 89014, 89015, 89044, 89052, 89074, 89119, 89120, 89122, 89123, 89124, 89183.

Death Age Rates in Henderson



Investigations are ongoing; data are subject to change.

Reporting through 02MAY2022

Henderson zip codes include 89002, 89011, 89012, 89014, 89015, 89044, 89052, 89074, 89119, 89120, 89122, 89123, 89124, 89183.

Table 5: Age and COVID19 in Henderson

Case Status	Age Categories	N	%	Population	Rate per 100,000
Cases	Aged 4 or less	2384	2.2	29,021	8214.7
	Aged 5 to 17	11979	11.3	82,126	14586
	Aged 18 to 24	11620	11.0	44,273	26246
	Aged 25 to 49	45914	43.3	187064	24545
	Aged 50 to 64	20660	19.5	102746	20108
	Aged 64+	13509	12.7	86,495	15618
	Unknown	20	0.0	.	.
Hospitalizations	Aged 4 or less	55	0.9	29,021	189.52
	Aged 5 to 17	67	1.1	82,126	81.58
	Aged 18 to 24	115	1.9	44,273	259.75
	Aged 25 to 49	1278	20.6	187064	683.19
	Aged 50 to 64	1563	25.2	102746	1521.2
	Aged 64+	3113	50.3	86,495	3599.1
	Deaths	Aged 4 or less	1	0.0	29,021
Aged 18 to 24		3	0.1	44,273	.
Aged 25 to 49		142	7.0	187064	75.91
Aged 50 to 64		401	19.7	102746	390.28
Aged 64+		1490	73.1	86,495	1722.6

Note1: Population data source for calculating rate estimates: U.S. Census Bureau, ACS 5-year estimate.

Note2: Rates for categories with fewer than 12 cases are suppressed due to high relative standard error.

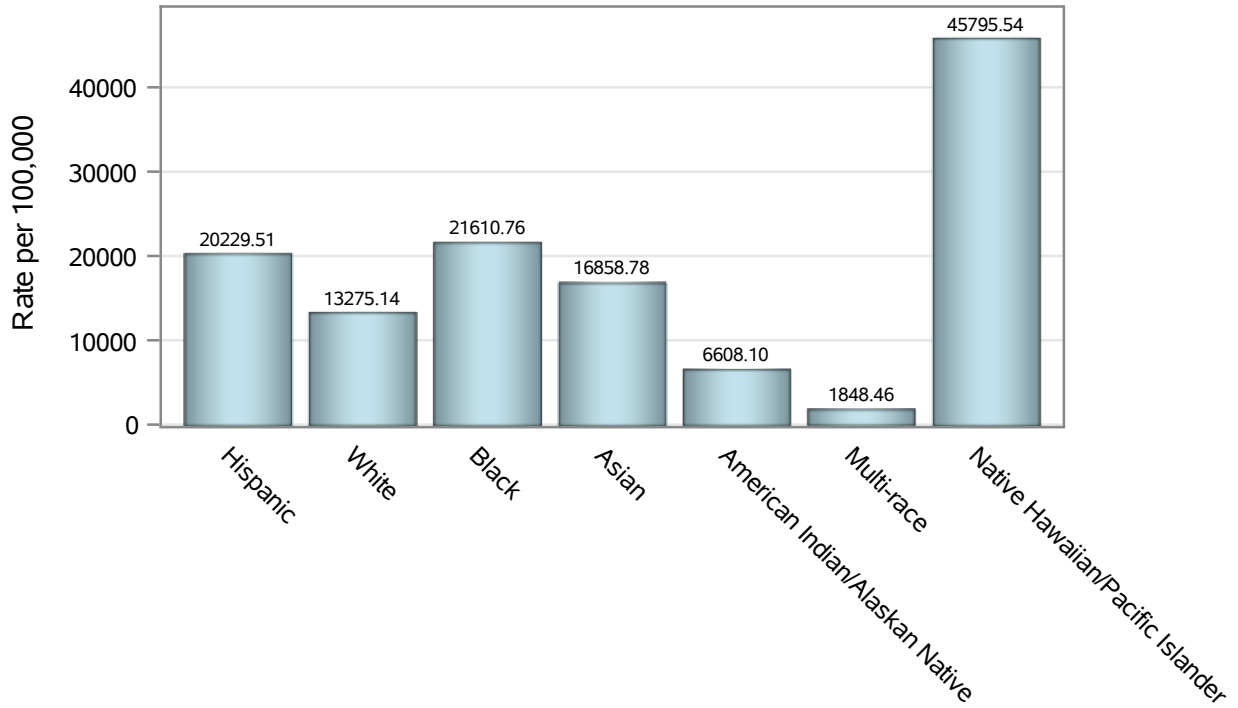
Note3: Hospitalizations are regardless of deceased status; Deaths are regardless of hospitalization status

Investigations are ongoing; data are subject to change.

Reporting through 02MAY2022

Henderson zip codes include 89002, 89011, 89012, 89014, 89015, 89044, 89052, 89074, 89119, 89120, 89122, 89123, 89124, 89183.

Case Race/Ethnicity Rates in Henderson

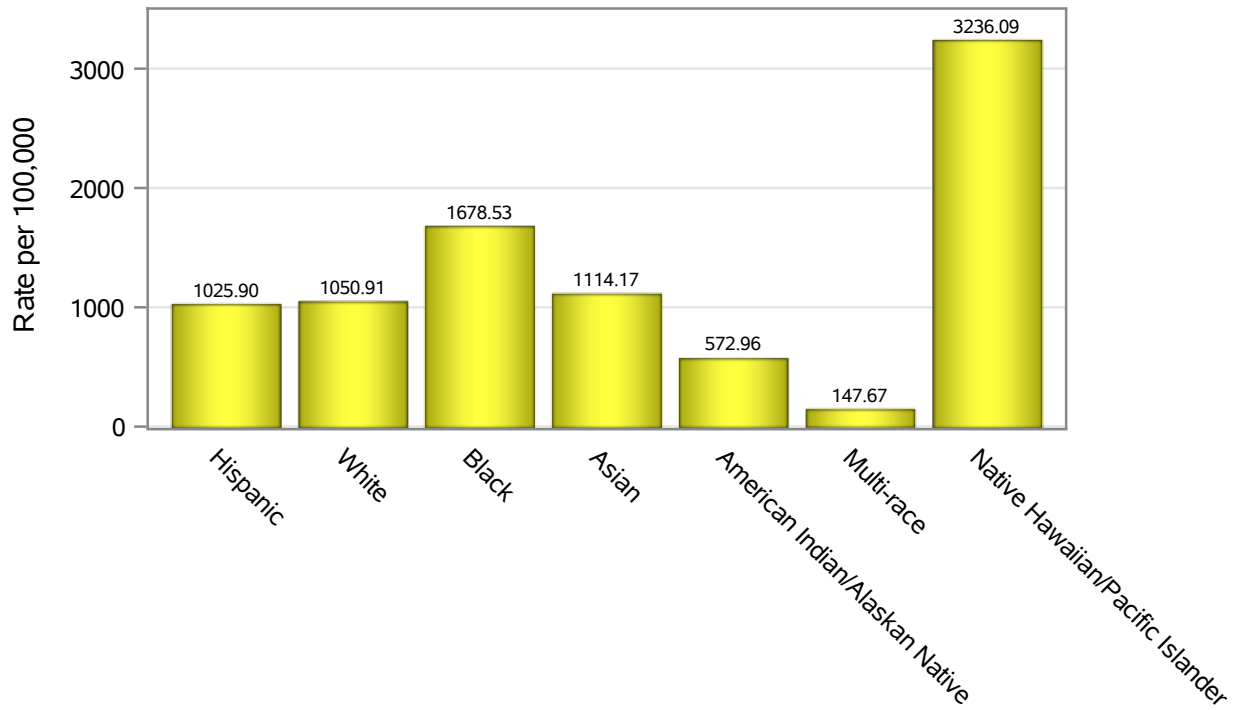


Investigations are ongoing; data are subject to change.

Reporting through 02MAY2022

Henderson zip codes include 89002, 89011, 89012, 89014, 89015, 89044, 89052, 89074, 89119, 89120, 89122, 89123, 89124, 89183.

Hospitalization Race/Ethnicity Rates in Henderson

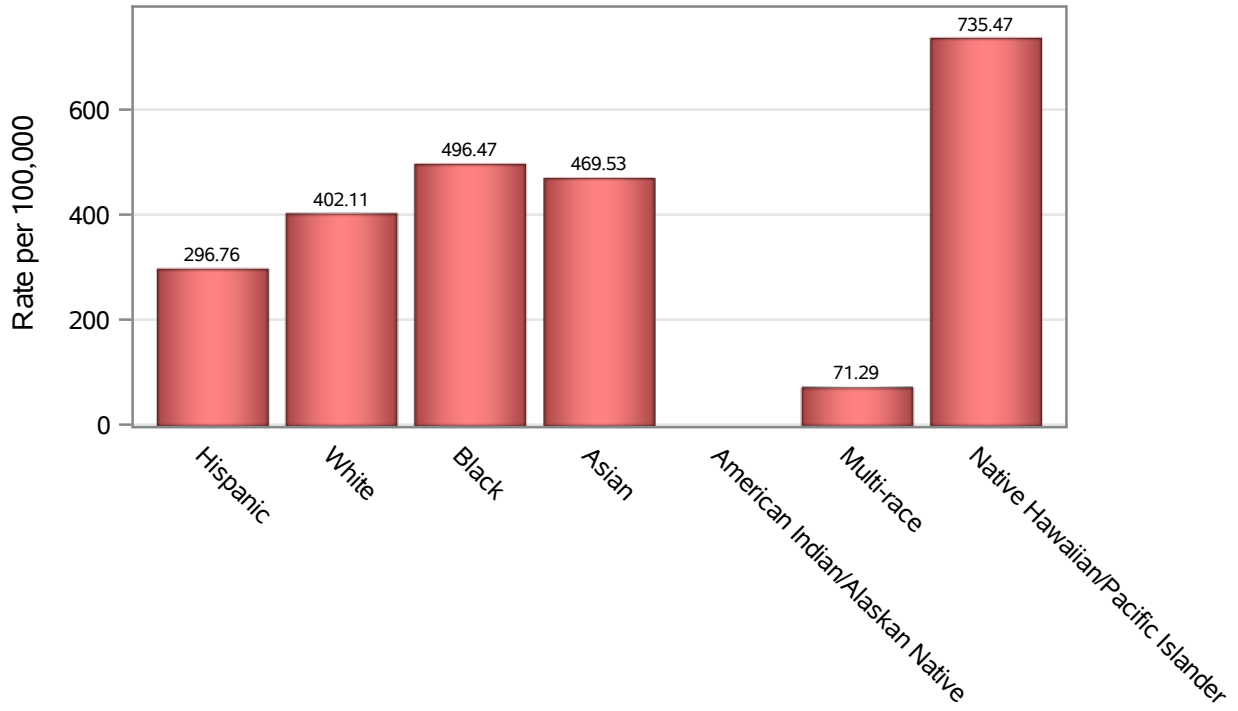


Investigations are ongoing; data are subject to change.

Reporting through 02MAY2022

Henderson zip codes include 89002, 89011, 89012, 89014, 89015, 89044, 89052, 89074, 89119, 89120, 89122, 89123, 89124, 89183.

Death Race/Ethnicity Rates in Henderson



Investigations are ongoing; data are subject to change.

Reporting through 02MAY2022

Henderson zip codes include 89002, 89011, 89012, 89014, 89015, 89044, 89052, 89074, 89119, 89120, 89122, 89123, 89124, 89183.

Table 6: Race/Ethnicity and COVID19 in Henderson

Case Status	Race Ethnicity Categories	N	%	Population	Rate per 100,000
Cases	Hispanic	24609	23.2	121649	20230
	White	38692	36.5	291462	13275
	Black	8227	7.8	38,069	21611
	Asian	8761	8.3	51,967	16859
	American Indian/Alaskan Native	173	0.2	2,618	6608.1
	Multi-race	363	0.3	19,638	1848.5
	Native Hawaiian/Pacific Islander	1868	1.8	4,079	45796
	Unknown	23393	22.1	.	.
Hospitalizations	Hispanic	1248	20.2	121649	1025.9
	White	3063	49.5	291462	1050.9
	Black	639	10.3	38,069	1678.5
	Asian	579	9.4	51,967	1114.2
	American Indian/Alaskan Native	15	0.2	2,618	572.96
	Multi-race	29	0.5	19,638	147.67
	Native Hawaiian/Pacific Islander	132	2.1	4,079	3236.1
	Unknown	486	7.9	.	.
Deaths	Hispanic	361	17.7	121649	296.76
	White	1172	57.5	291462	402.11
	Black	189	9.3	38,069	496.47
	Asian	244	12.0	51,967	469.53
	American Indian/Alaskan Native	8	0.4	2,618	.
	Multi-race	14	0.7	19,638	71.29
	Native Hawaiian/Pacific Islander	30	1.5	4,079	735.47
	Unknown	19	0.9	.	.

Note1: Population data source for calculating rate estimates: U.S. Census Bureau, ACS 5-year estimate.

Note2: Rates for categories with fewer than 12 cases are suppressed due to high relative standard error.

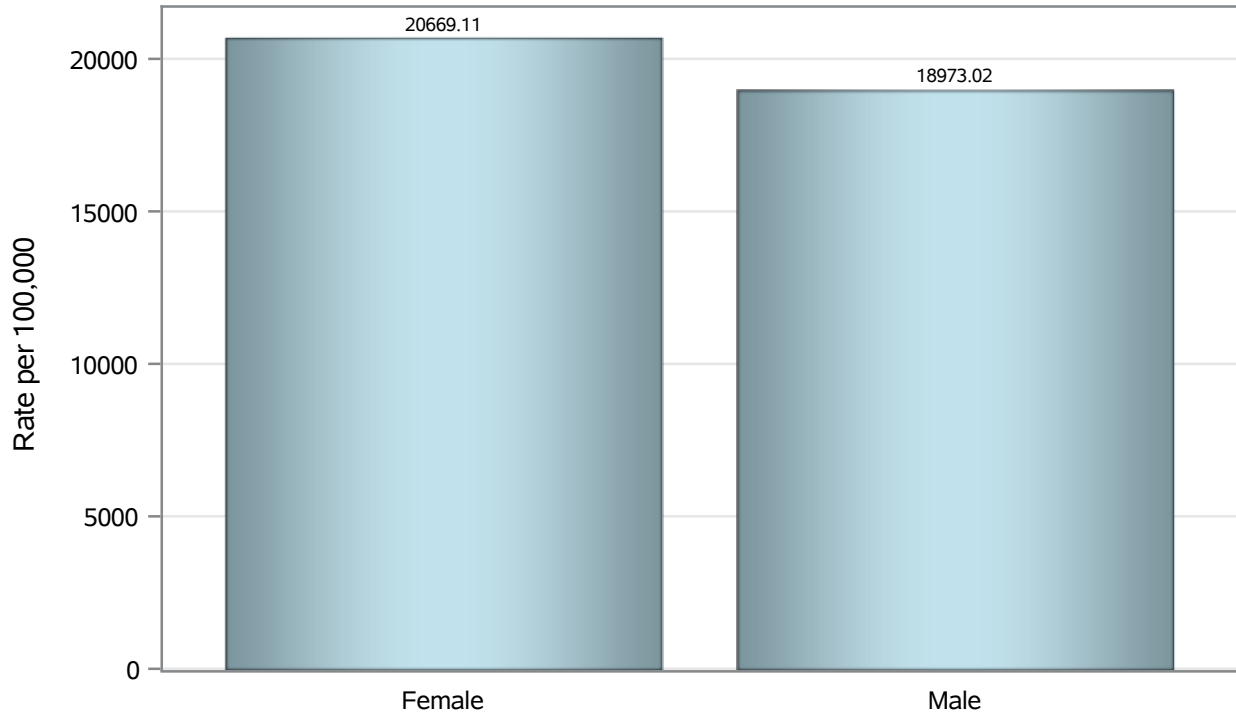
Note3: Hospitalizations are regardless of deceased status; Deaths are regardless of hospitalization status

Investigations are ongoing; data are subject to change.

Reporting through 02MAY2022

Henderson zip codes include 89002, 89011, 89012, 89014, 89015, 89044, 89052, 89074, 89119, 89120, 89122, 89123, 89124, 89183.

Case Birth Sex Rates in Henderson

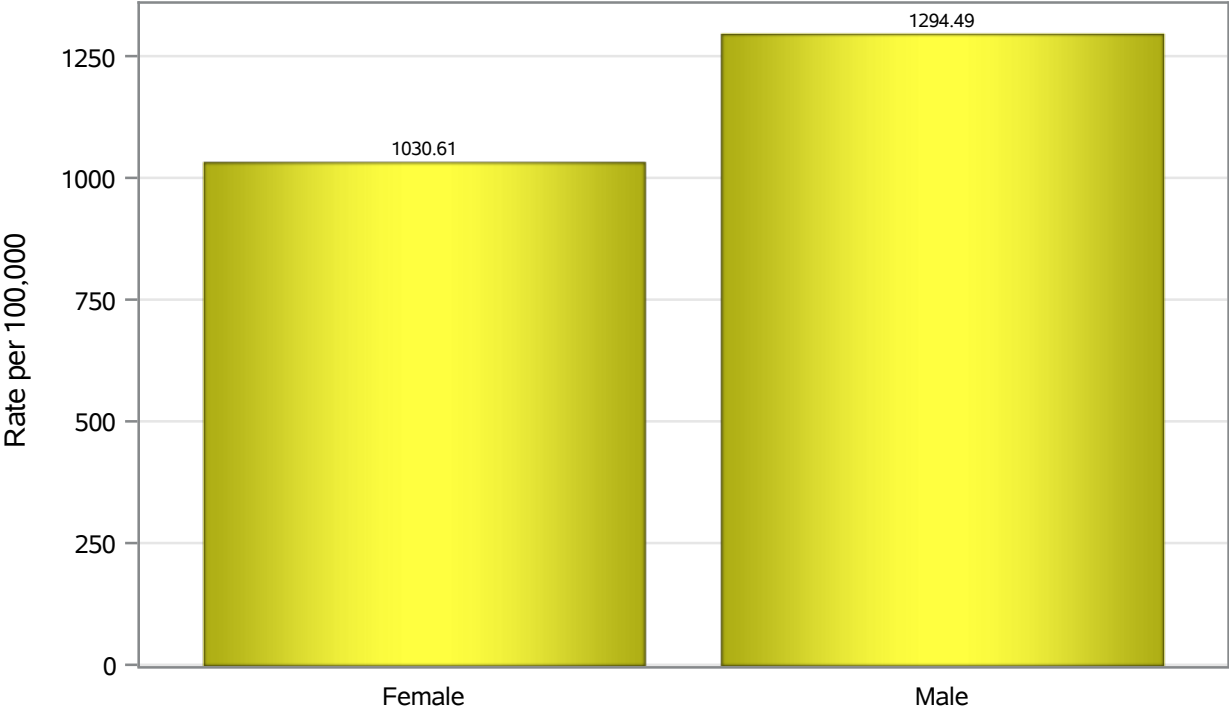


Investigations are ongoing; data are subject to change.

Reporting through 02MAY2022

Henderson zip codes include 89002, 89011, 89012, 89014, 89015, 89044, 89052, 89074, 89119, 89120, 89122, 89123, 89124, 89183.

Hospitalization Birth Sex Rates in Henderson

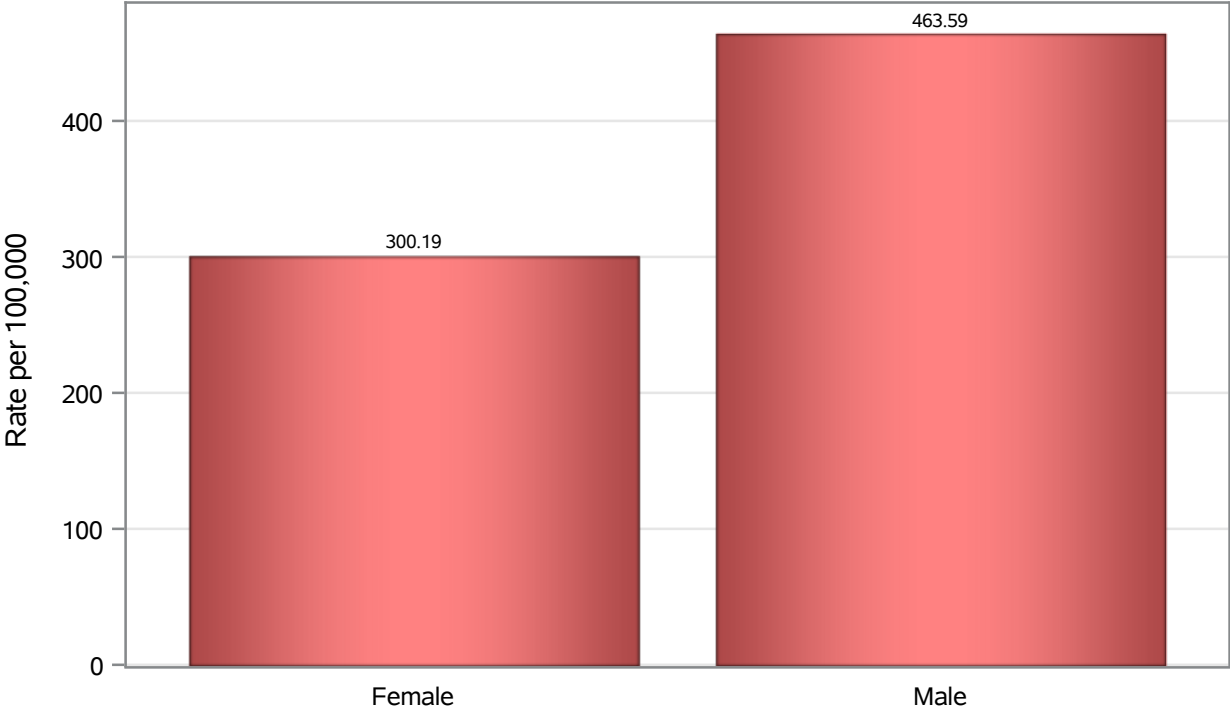


Investigations are ongoing; data are subject to change.

Reporting through 02MAY2022

Henderson zip codes include 89002, 89011, 89012, 89014, 89015, 89044, 89052, 89074, 89119, 89120, 89122, 89123, 89124, 89183.

Death Birth Sex Rates in Henderson



Investigations are ongoing; data are subject to change.
Reporting through 02MAY2022

Henderson zip codes include 89002, 89011, 89012, 89014, 89015, 89044, 89052, 89074, 89119, 89120, 89122, 89123, 89124, 89183.

Table 7: Birth Sex and COVID19 in Henderson

Case Status	Birth Sex Categories	N	%	Population	Rate per 100,000
Cases	Female	55152	52.0	266833	20669
	Male	50258	47.4	264892	18973
	Unknown	676	0.6	.	.
Hospitalizations	Female	2750	44.4	266833	1030.6
	Male	3429	55.4	264892	1294.5
	Unknown	12	0.2	.	.
Deaths	Female	801	39.3	266833	300.19
	Male	1228	60.3	264892	463.59
	Unknown	8	0.4	.	.

Note1: Population data source for calculating rate estimates: U.S. Census Bureau, ACS 5-year estimate.

Note2: Rates for categories with fewer than 12 cases are suppressed due to high relative standard error.

Note3: Hospitalizations are regardless of deceased status; Deaths are regardless of hospitalization status

Investigations are ongoing; data are subject to change.

Reporting through 02MAY2022

Henderson zip codes include 89002, 89011, 89012, 89014, 89015, 89044, 89052, 89074, 89119, 89120, 89122, 89123, 89124, 89183.