

COVID-19 Trends

Clark County, Nevada

Document creation date: May 25, 2022

- General notes: This report uses surveillance data collected by the Southern Nevada Health District. Due to delays related to laboratory processing, reporting, and case investigations, data from the most recent days are less complete than data from older time points. For this reason, as of June 10, 2020 this report will not display data from the previous three days prior to the date that the report was created. As many case investigations are ongoing, all data presented in this report are considered preliminary and subject to change. Data regarding cases, hospitalizations, deaths, and labs were last updated May 25, 2022 at 12:00 AM, and data is reported up through May 21, 2022.
- Cases: Symptom onset date was used for aggregating cases. If symptom onset date was missing, the following dates were substituted in this order: diagnosis date, lab collection date, report date (date case was reported to SNHD), event creation date (date case was entered into TriSano, SNHD's surveillance system).
- Hospitalizations: Admission date reported the the Nevada Hospital Association was used for aggregating hospitalizations. One person could have more than one admissions.
- Deaths: Date of death was used for aggregating deaths. If date of death was missing, report date was used.
- For the "7-Day Average of Daily New Cases per 100K, by Age Group (Years)" graph and table, the population data source for calculating rate estimates was from Nevada State Demographer "2019 ASRHO Estimates and Projections Summary 2000 to 2038", 2020 projection, vintage 2019. Rates for individual age categories may be based on small numbers, which may give unstable estimates.
- All graphs in this report show data from approximately 60 days prior to the date of the report.
- All tables show data from the last 14 days before the current date, with the exception of the "Percent Change in Weekly Totals from Previous Week", which displays data from the previous eight completed weeks.
- For the "Percent of People Receiving COVID-19 PCR Tests Who Have Positive Results" graph, one person who has multiple specimens collected in one day is only reported once. If any test of that person is positive, that person counts as a positive result. If all tests of that individual are negative, that person counts as a negative result. Laboratory tests were included if they were a test assessing for the presence of SARS-CoV-2 viral RNA, for example PCR tests. Antibody and antigen tests were excluded.

COVID-19 Cases

Clark County, NV

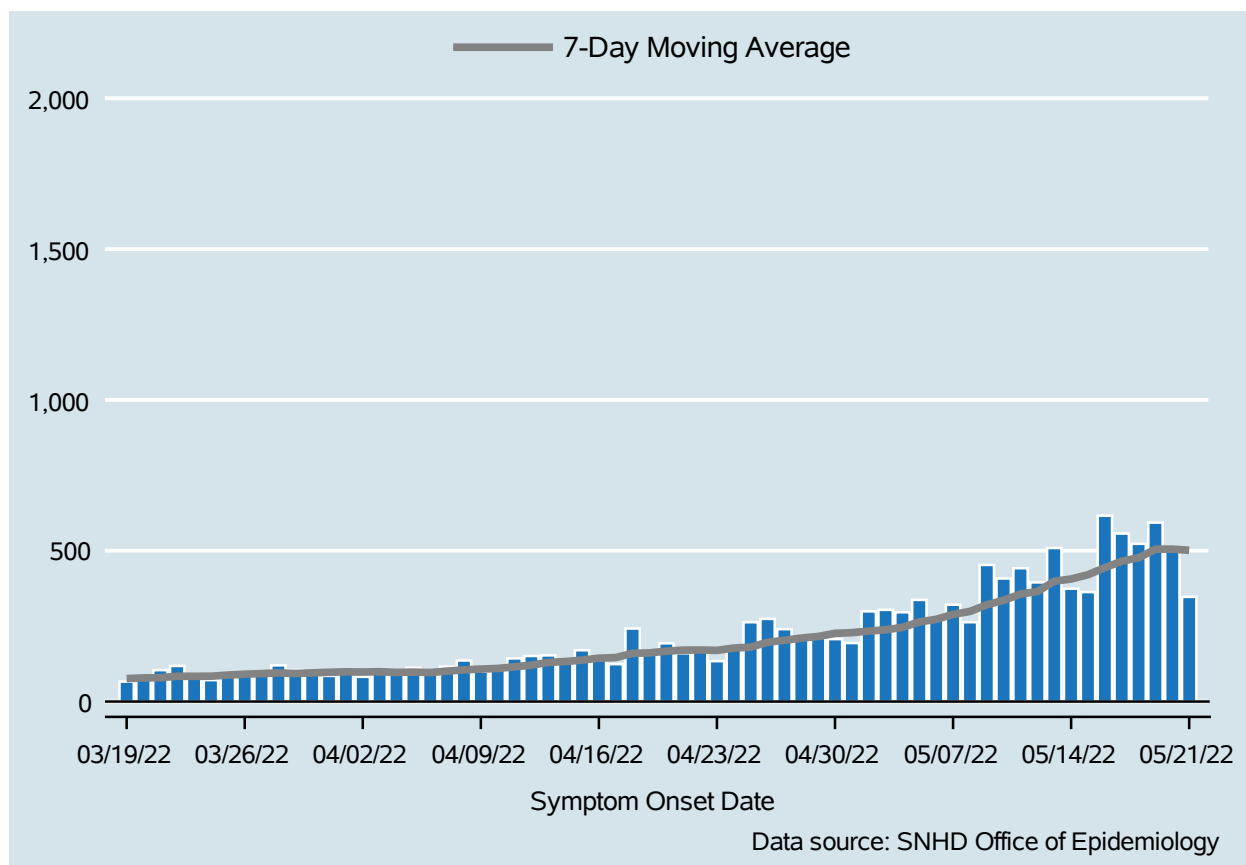


Table 1: COVID-19 Cases per Day, Clark County, NV

Date	Cases Per Day	7-Day Moving Average
May 08	263	298.7
May 09	453	320.7
May 10	408	335.6
May 11	442	356.4
May 12	395	364.7
May 13	509	398.7
May 14	374	406.3
May 15	363	420.6
May 16	616	443.9
May 17	557	465.1
May 18	523	476.7
May 19	593	505.0
May 20	511	505.3
May 21	347	501.4

COVID-19 Hospitalizations

Clark County, NV

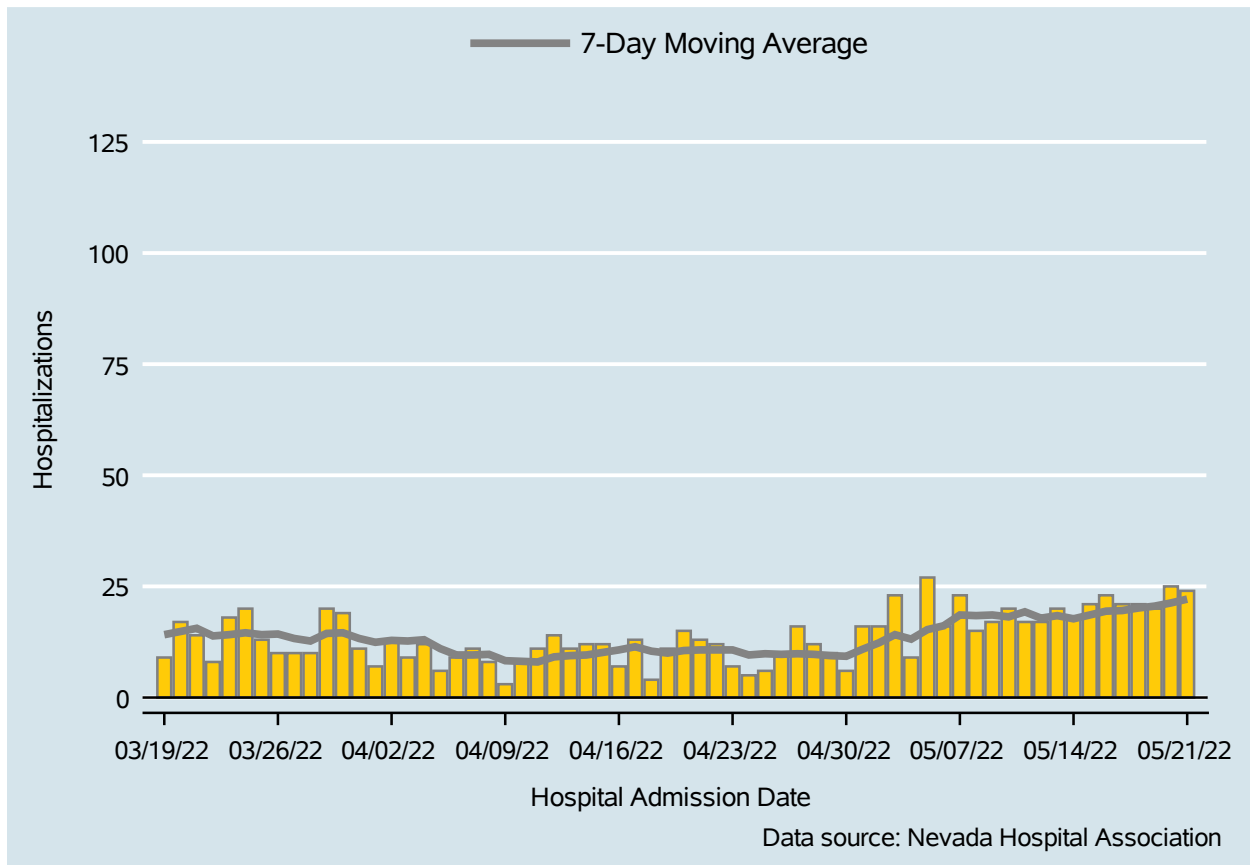


Table 2: COVID-19 Hospitalizations per Day, Clark County, NV

Date	Hospitalizations Per Day	7-Day Moving Average
May 08	15	18.4
May 09	17	18.6
May 10	20	18.1
May 11	17	19.3
May 12	17	17.9
May 13	20	18.4
May 14	18	17.7
May 15	21	18.6
May 16	23	19.4
May 17	21	19.6
May 18	21	20.1
May 19	20	20.6
May 20	25	21.3
May 21	24	22.1

Bed Occupancy of COVID-19 Hospitalizations

Clark County, NV

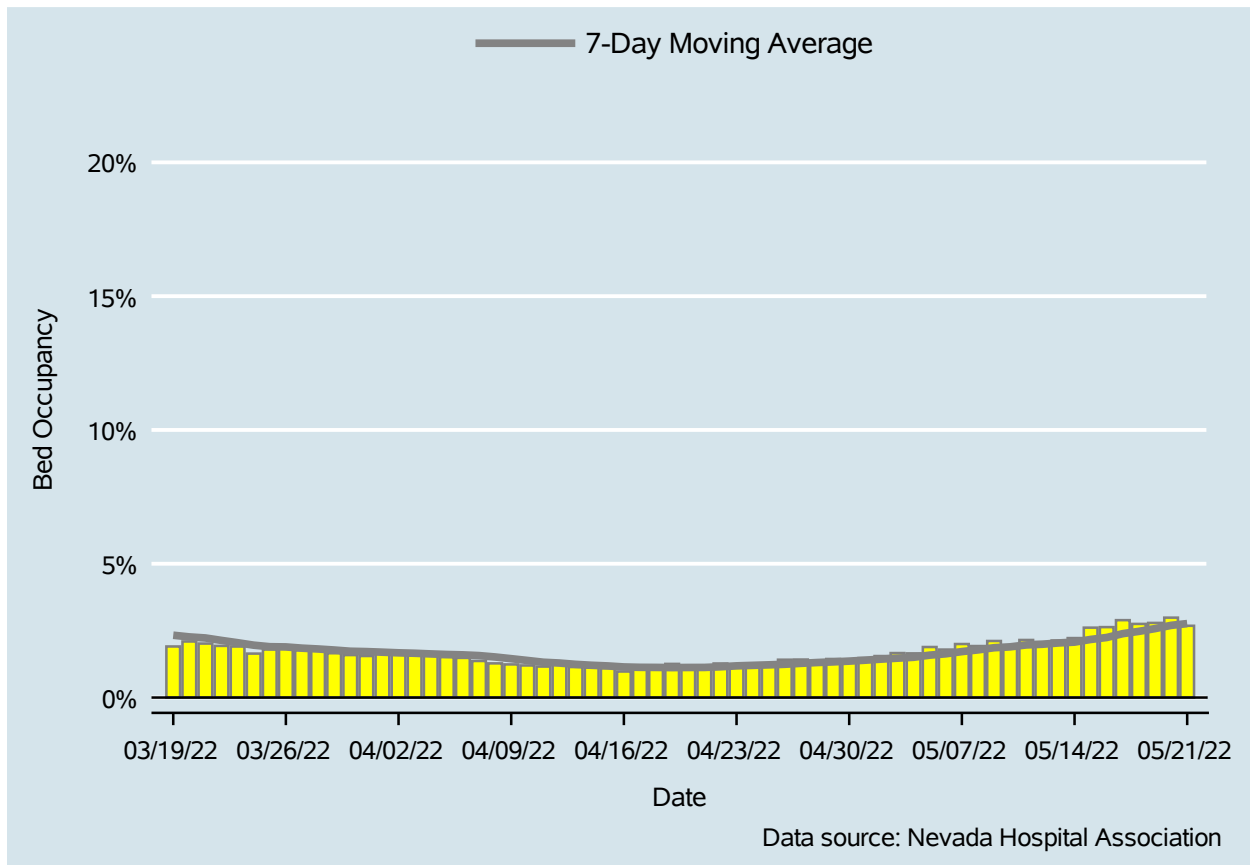


Table 3: Percent of Bed Occupancy per Day, Clark County, NV

Date	Bed Occupancy Per Day	7-Day Moving Average
May 08	1.92%	1.78%
May 09	2.11%	1.86%
May 10	1.89%	1.89%
May 11	2.15%	1.97%
May 12	2.07%	1.99%
May 13	2.13%	2.04%
May 14	2.22%	2.07%
May 15	2.61%	2.17%
May 16	2.63%	2.24%
May 17	2.89%	2.39%
May 18	2.75%	2.47%
May 19	2.79%	2.58%
May 20	2.99%	2.70%
May 21	2.68%	2.76%

COVID-19 Deaths

Clark County, NV

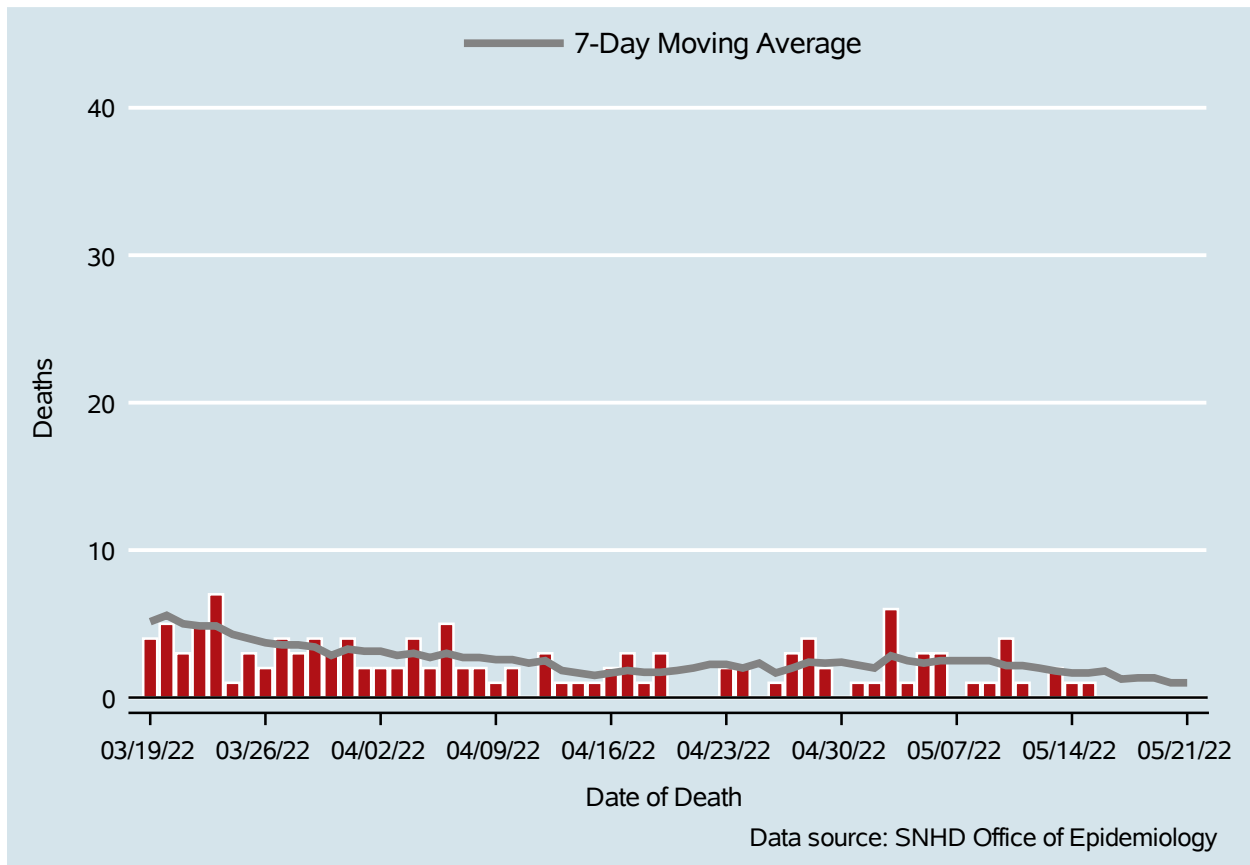


Table 4: COVID-19 Deaths per Day, Clark County, NV

Date	Deaths Per Day	7-Day Moving Average
May 08	1	2.5
May 09	1	2.5
May 10	4	2.2
May 11	1	2.2
May 12	.	2.0
May 13	2	1.8
May 14	1	1.7
May 15	1	1.7
May 16	.	1.8
May 17	.	1.3
May 18	.	1.3
May 19	.	1.3
May 20	.	1.0
May 21	.	1.0

7-Day Average of Daily New Cases per 100K, by Age Group (Years)

Clark County, NV

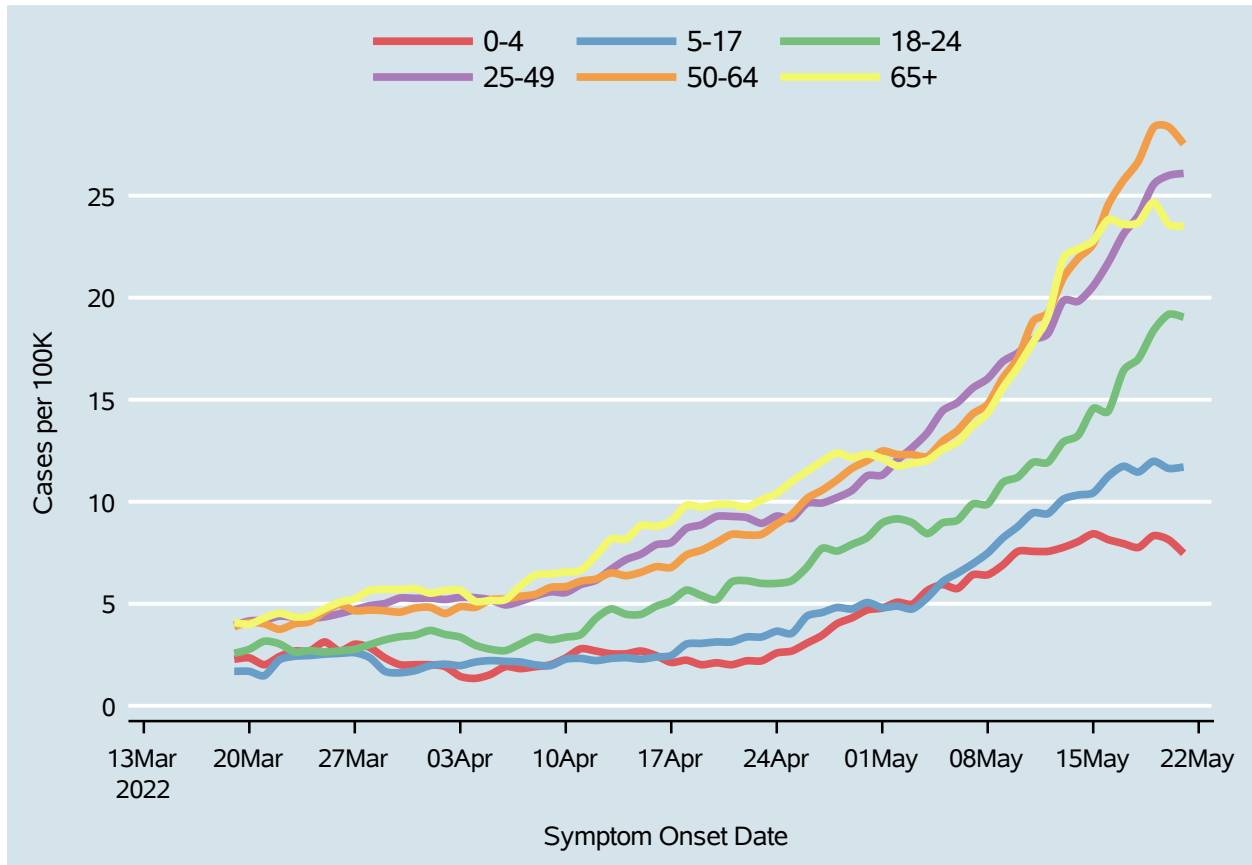
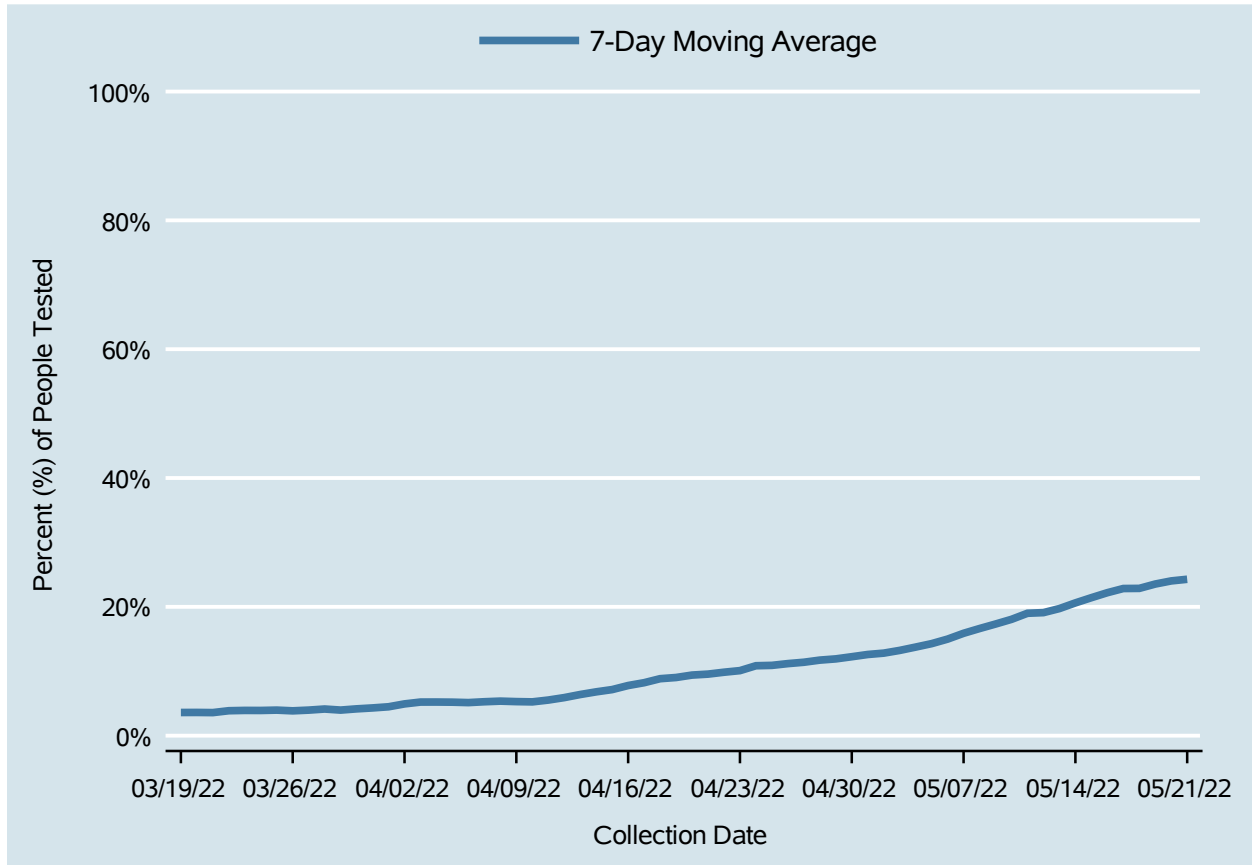


Table 5: 7-Day Average of Daily New Cases per 100K, by Age Group (Years)

Date	0-4	5-17	18-24	25-49	50-64	65+
May 08	6.4	7.5	9.9	16.0	14.8	14.4
May 09	6.9	8.2	10.9	16.9	16.1	15.6
May 10	7.6	8.8	11.2	17.3	17.0	16.6
May 11	7.6	9.5	11.9	17.9	18.8	17.8
May 12	7.6	9.4	11.9	18.2	19.3	19.1
May 13	7.8	10.1	12.9	19.8	20.9	21.9
May 14	8.0	10.3	13.2	19.8	21.9	22.4
May 15	8.4	10.4	14.6	20.6	22.6	22.8
May 16	8.1	11.2	14.4	21.7	24.6	23.8
May 17	7.9	11.7	16.4	23.1	25.7	23.6
May 18	7.8	11.5	17.0	24.0	26.7	23.7
May 19	8.3	12.0	18.4	25.5	28.3	24.7
May 20	8.1	11.6	19.2	26.0	28.4	23.6
May 21	7.5	11.7	19.0	26.1	27.5	23.5

Percent of People Receiving COVID-19 PCR Tests Who Have Positive Results

Clark County, NV



Report prepared by: Ying Zhang, PhD, MPH (Office of Epidemiology) and Lei Zhang, MS (Office of Informatics)