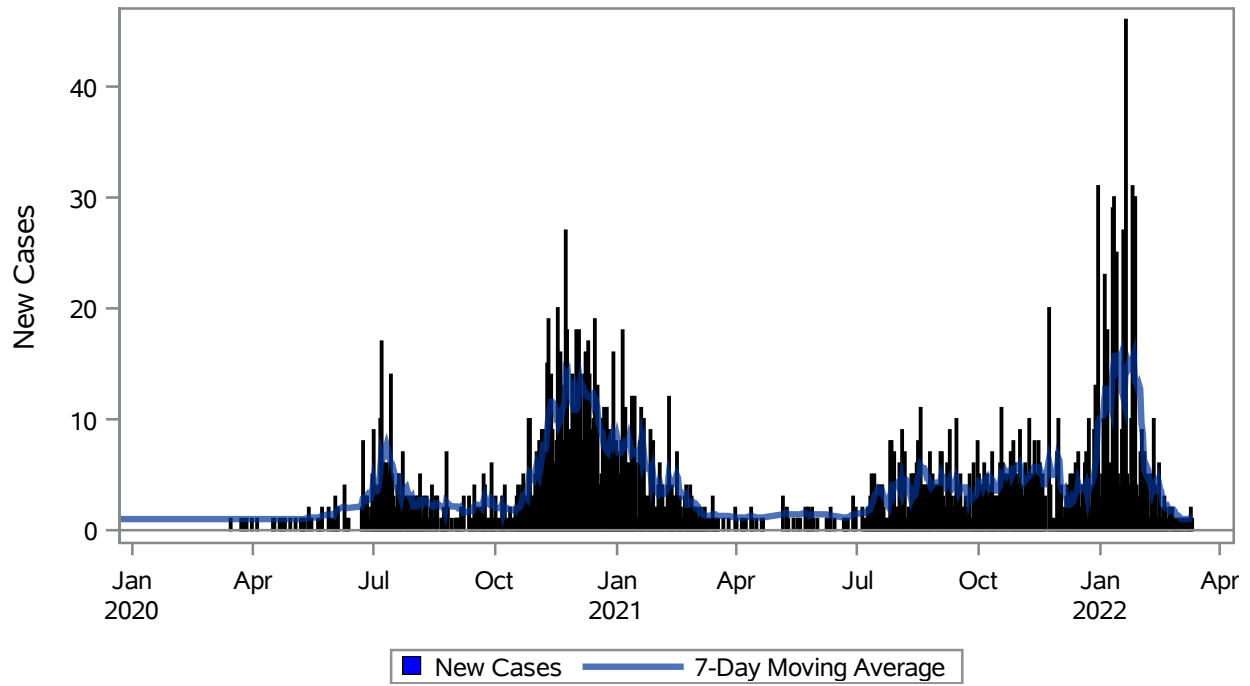


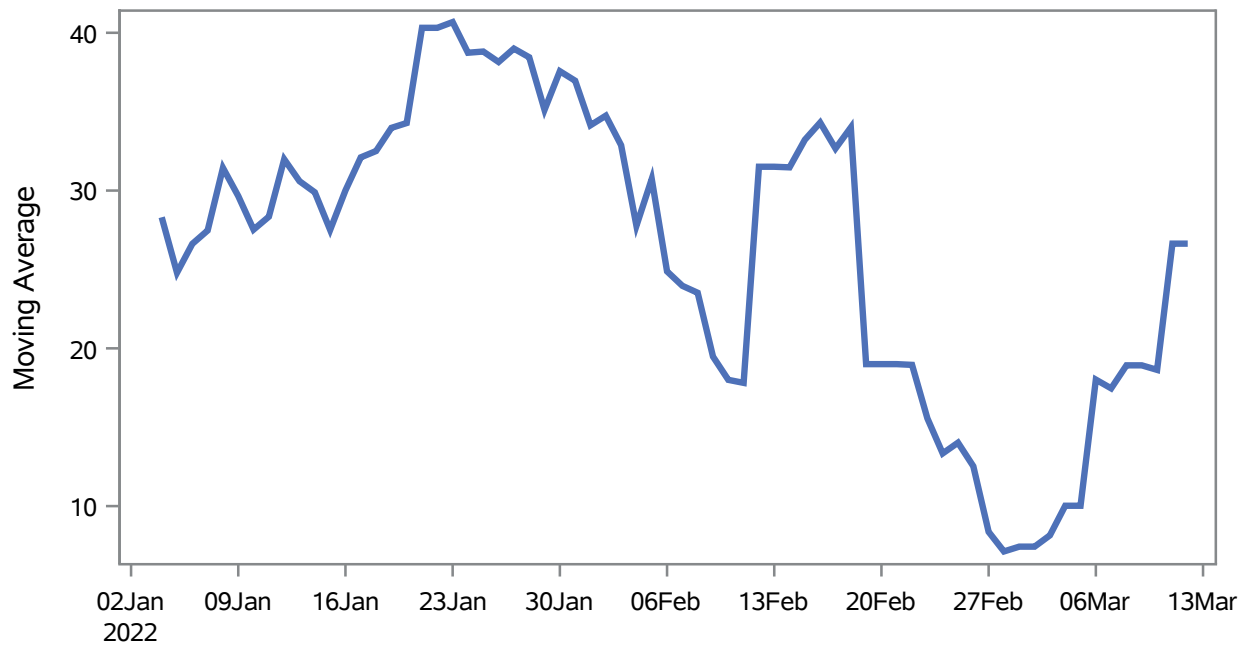
### COVID19 Cases for Mesquite, 7-Day Moving Average



Investigations are ongoing; data are subject to change.  
Reporting through 14MAR2022

Mesquite zip codes include 89027,89034. The U.S. Census Bureau data uses Zip Code Tabulation Area (ZCTA), which does not list 89034 but has incorporated areas of 89034 within 89027 through the American Community Survey (ACS) 5-Year Estimates.

### Percent of People Receiving COVID-19 Viral Tests Who Have Positive Results in Mesquite



Investigations are ongoing; data are subject to change.

Reporting through 14MAR2022

Mesquite zip codes include 89027,89034. The U.S. Census Bureau data uses Zip Code Tabulation Area (ZCTA), which does not list 89034 but has incorporated areas of 89034 within 89027 through the American Community Survey (ACS) 5-Year Estimates.

**Table 1: Age and COVID19 in Mesquite**

Case Status	Age Categories	N	%	Population	Rate per 100,000
Cases	Aged 4 or less	27	1.1	702	3846.2
	Aged 5 to 17	244	9.8	2,217	11006
	Aged 18 to 24	227	9.2	938	24200
	Aged 25 to 49	676	27.3	3,386	19965
	Aged 50 to 64	530	21.4	3,371	15722
	Aged 64+	775	31.3	7,290	10631
Hospitalizations	Aged 4 or less	1	0.8	702	--
	Aged 5 to 17	1	0.8	2,217	--
	Aged 25 to 49	13	9.9	3,386	383.93
	Aged 50 to 64	22	16.8	3,371	652.63
	Aged 64+	94	71.8	7,290	1289.4
Deaths	Aged 25 to 49	1	2.0	3,386	--
	Aged 50 to 64	3	5.9	3,371	--
	Aged 64+	47	92.2	7,290	644.72

Note1: Population data source for calculating rate estimates: U.S. Census Bureau, ACS 5-year estimate.

Note2: Rates for categories with fewer than 12 cases are suppressed due to high relative standard error.

Note3: Hospitalizations are regardless of deceased status; Deaths are regardless of hospitalization status

**Investigations are ongoing; data are subject to change.  
Reporting through 14MAR2022**

**Mesquite zip codes include 89027,89034. The U.S. Census Bureau data uses Zip Code Tabulation Area (ZCTA), which does not list 89034 but has incorporated areas of 89034 within 89027 through the American Community Survey (ACS) 5-Year Estimates.**

**Table 2: Race/Ethnicity and COVID19 in Mesquite**

Case Status	Race Ethnicity Categories	N	%	Population	Rate per 100,000
Cases	Hispanic	667	26.9	3,738	17844
	White	1352	54.5	13,120	10305
	Black	--	--	148	12162
	Asian	--	--	486	9259.3
	American Indian/Alaskan Native	--	--	95	--
	Multi-race	--	--	240	--
	Native Hawaiian/Pacific Islander	--	--	30	60000
	Unknown	371	15.0	.	.
Hospitalizations	Hispanic	25	19.1	3,738	668.81
	White	91	69.5	13,120	693.60
	Black	--	--	148	--
	Asian	--	--	486	--
	American Indian/Alaskan Native	--	--	95	--
	Multi-race	--	--	240	--
	Native Hawaiian/Pacific Islander	--	--	30	--
	Unknown	6	4.6	.	.
Deaths	Hispanic	3	5.9	3,738	--
	White	45	88.2	13,120	342.99
	Asian	--	--	486	--
	American Indian/Alaskan Native	--	--	95	--
	Native Hawaiian/Pacific Islander	--	--	30	--

Note1: Population data source for calculating rate estimates: U.S. Census Bureau, ACS 5-year estimate.

Note2: Rates for categories with fewer than 12 cases are suppressed due to high relative standard error. Counts for categories with population less than 500 are suppressed for confidentiality.

Note3: Due to suppression, the total counts per case status may not equal expected totals.

Note4: Hospitalizations are regardless of deceased status; Deaths are regardless of hospitalization status

**Investigations are ongoing; data are subject to change.  
Reporting through 14MAR2022**

**Mesquite zip codes include 89027,89034. The U.S. Census Bureau data uses Zip Code Tabulation Area (ZCTA), which does not list 89034 but has incorporated areas of 89034 within 89027 through the American Community Survey (ACS) 5-Year Estimates.**

**Table 3: Birth Sex and COVID19 in Mesquite**

Case Status	Birth Sex Categories	N	%	Population	Rate per 100,000
Cases	Female	1338	54.0	9,111	14686
	Male	1125	45.4	8,793	12794
	Unknown	16	0.6	.	.
Hospitalizations	Female	55	42.0	9,111	603.67
	Male	76	58.0	8,793	864.32
Deaths	Female	14	27.5	9,111	153.66
	Male	37	72.5	8,793	420.79

Note1: Population data source for calculating rate estimates: U.S. Census Bureau, ACS 5-year estimate.

Note2: Rates for categories with fewer than 12 cases are suppressed due to high relative standard error. Counts for categories with population less than 500 are suppressed for confidentiality.

Note3: Hospitalizations are regardless of deceased status; Deaths are regardless of hospitalization status

**Investigations are ongoing; data are subject to change.  
Reporting through 14MAR2022**

**Mesquite zip codes include 89027,89034. The U.S. Census Bureau data uses Zip Code Tabulation Area (ZCTA), which does not list 89034 but has incorporated areas of 89034 within 89027 through the American Community Survey (ACS) 5-Year Estimates.**