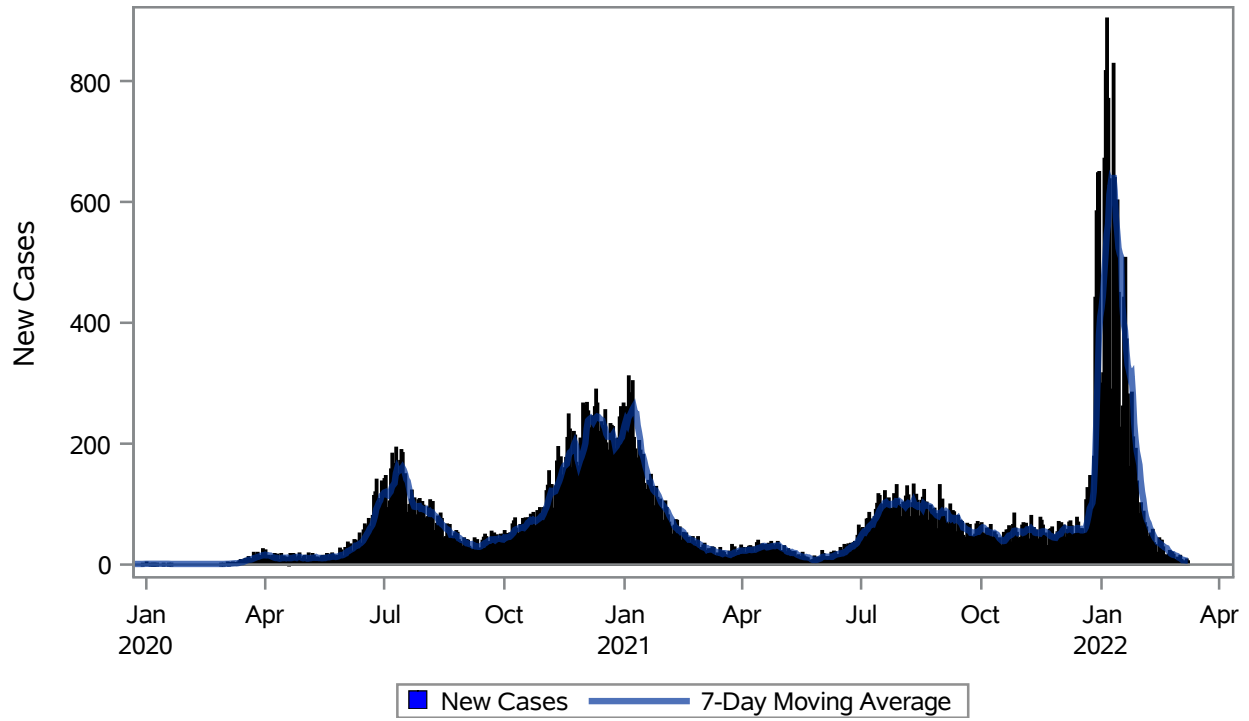


COVID19 Cases for North Las Vegas, 7-Day Moving Average



Investigations are ongoing; data are subject to change.
Reporting through 09MAR2022

North Las Vegas zip codes include 89030, 89031, 89032, 89033, 89036, 89081, 89084, 89085, 89086, 89087.

Table 1: New COVID19 Cases and 7-Day Moving Average in North Las Vegas, Previous Two Weeks

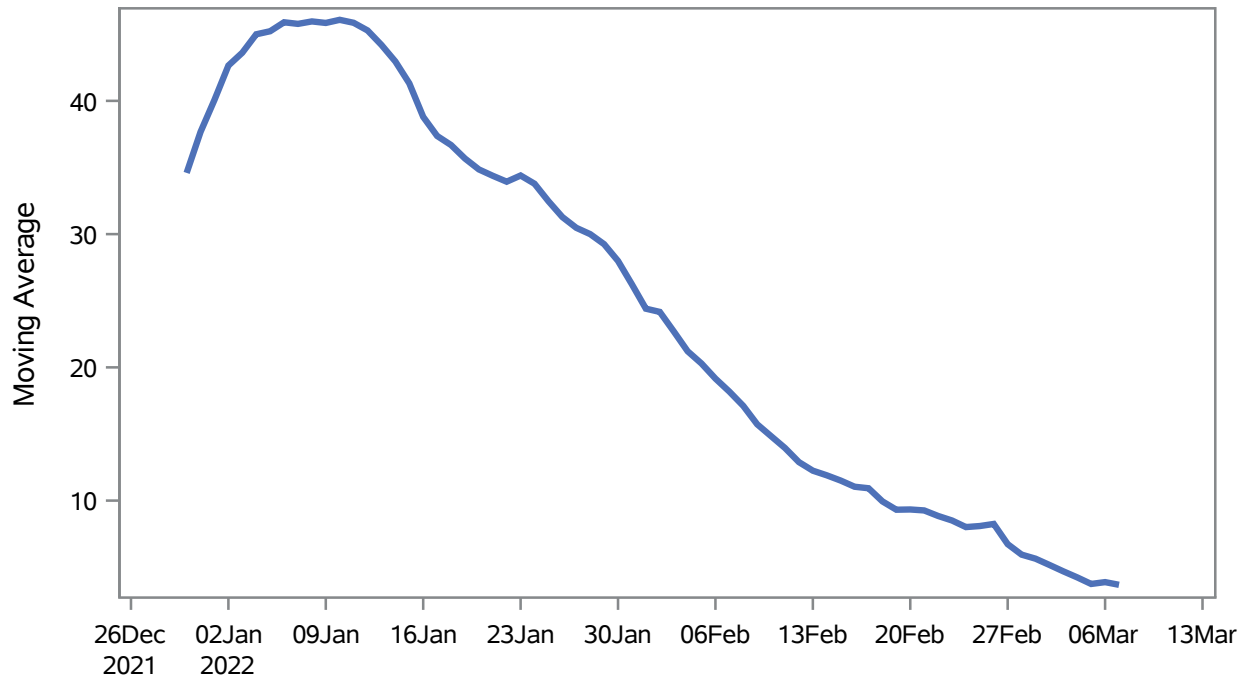
Date (Daily)	New Cases	7-Day Moving Average
24FEB2022	19	16.86
25FEB2022	16	17.00
26FEB2022	3	15.43
27FEB2022	7	14.71
28FEB2022	11	14.00
01MAR2022	5	11.57
02MAR2022	14	10.71
03MAR2022	7	9.00
04MAR2022	4	7.29
05MAR2022	5	7.57
06MAR2022	2	6.86
07MAR2022	8	6.43

Note1: Event Date is calculated as follows based on completed information:
1) Disease onset date 2) Disease diagnosis date 3) Lab result collection date 4) Report date to SNHD.

**Investigations are ongoing; data are subject to change.
Reporting through 09MAR2022**

North Las Vegas zip codes include 89030, 89031, 89032, 89033, 89036, 89081, 89084, 89085, 89086, 89087.

Percent of People Receiving COVID-19 Viral Tests Who Have Positive Results in North Las Vegas



Investigations are ongoing; data are subject to change.

Reporting through 09MAR2022

North Las Vegas zip codes include 89030, 89031, 89032, 89033, 89036, 89081, 89084, 89085, 89086, 89087.

Table 2: Percent of People Receiving COVID-19 Viral Tests Who Have Positive Results in North Las Vegas

Collection Date	Positive	Negative	Equivocal	Total	% Positivity	7-Day Moving Average
21FEB2022	35	321	1	357	9.80	9.26
22FEB2022	41	703	4	748	5.48	8.85
23FEB2022	43	598	2	643	6.69	8.51
24FEB2022	30	472	2	504	5.95	8.01
25FEB2022	31	362		393	7.89	8.09
26FEB2022	15	164	1	180	8.33	8.25
27FEB2022	6	194	1	201	2.99	6.73
28FEB2022	27	598	3	628	4.30	5.95
01MAR2022	17	490	1	508	3.35	5.64
02MAR2022	23	651	3	677	3.40	5.17
03MAR2022	15	564	2	581	2.58	4.69
04MAR2022	15	302	1	318	4.72	4.24
05MAR2022	10	194	1	205	4.88	3.74
06MAR2022	7	169	1	177	3.95	3.88
07MAR2022	15	501	3	519	2.89	3.68

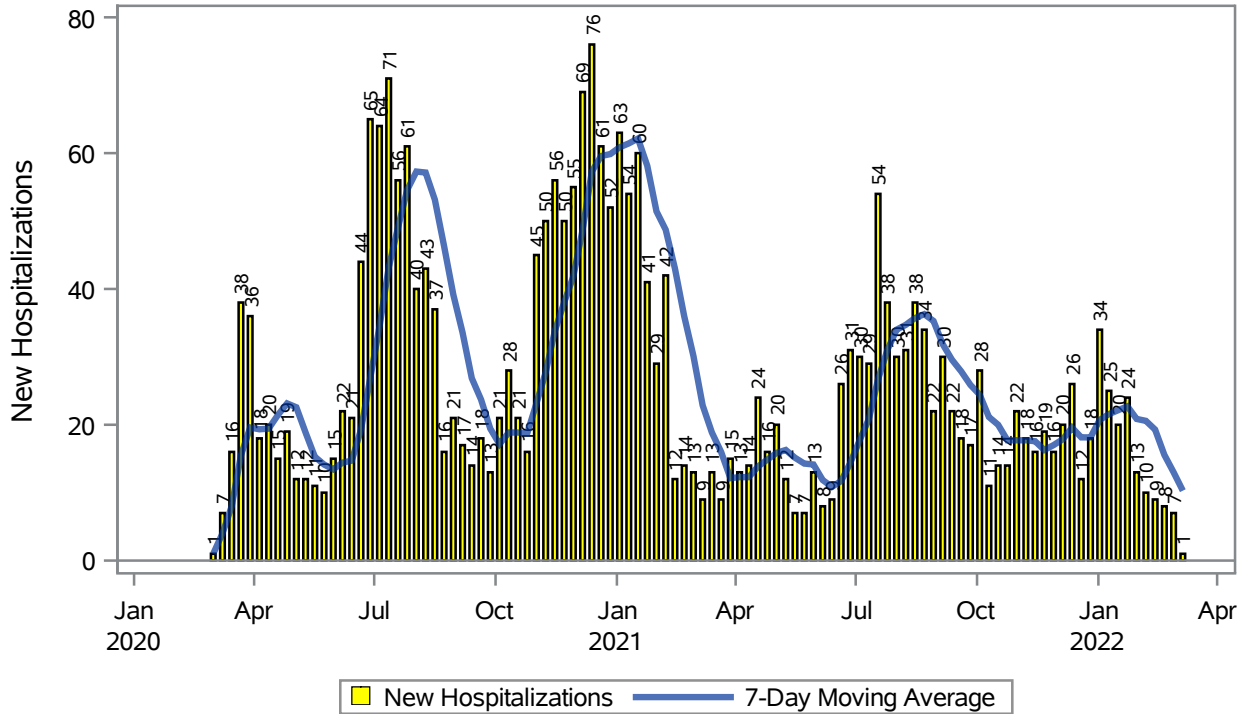
Note: Testing Data includes a 3 day delay

Investigations are ongoing; data are subject to change.

Reporting through 09MAR2022

North Las Vegas zip codes include 89030, 89031, 89032, 89033, 89036, 89081, 89084, 89085, 89086, 89087.

COVID19 Hospitalizations for North Las Vegas, 7-Day Moving Average



Investigations are ongoing; data are subject to change.

Reporting through 09MAR2022

North Las Vegas zip codes include 89030, 89031, 89032, 89033, 89036, 89081, 89084, 89085, 89086, 89087.

Table 3: New COVID19-Related Hospitalizations and 7-Day Moving Average in North Las Vegas, previous month

Week	Hospitalizations	7-Day Moving Average
13FEB2022	9	19.3
20FEB2022	8	15.6
27FEB2022	7	13.0
06MAR2022	1	10.3

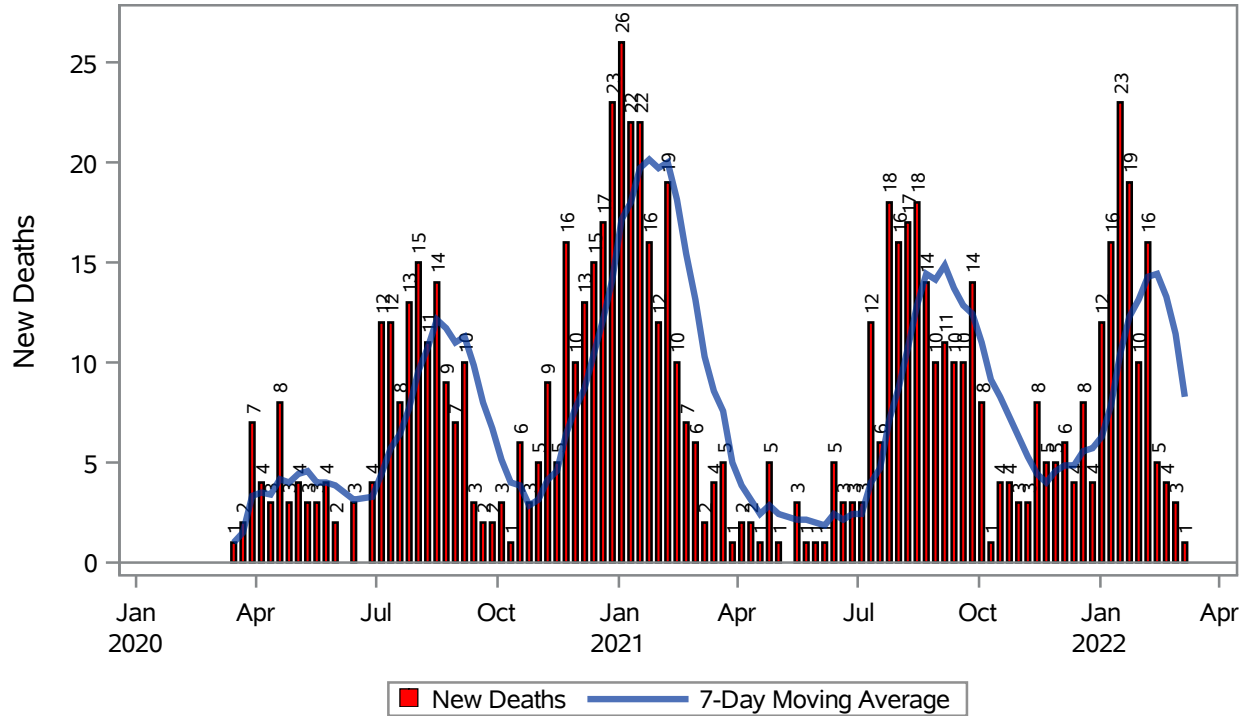
Note1: Admission Date is calculated as follows based on completed information:
A) COVID19 Case is hospitalized B) COVID19 Case has a hospital admission date.

If admission date is missing, then the following is substituted temporarily, in order:
1) Disease onset date 2) Disease diagnosis date 3) Lab result collection date 4) Report date to SNHD.

**Investigations are ongoing; data are subject to change.
Reporting through 09MAR2022**

North Las Vegas zip codes include 89030, 89031, 89032, 89033, 89036, 89081, 89084, 89085, 89086, 89087.

COVID19 Deaths for North Las Vegas, 7-Day Moving Average



Investigations are ongoing; data are subject to change.

Reporting through 09MAR2022

North Las Vegas zip codes include 89030, 89031, 89032, 89033, 89036, 89081, 89084, 89085, 89086, 89087.

Table 4: New COVID19-Related Deaths and 7-Day Moving Average in North Las Vegas, Previous Month

Week	Deaths	7-Day Moving Average
13FEB2022	5	14.4
20FEB2022	4	13.3
27FEB2022	3	11.4
06MAR2022	1	8.29

Note1: Date of Death is calculated as follows based on completed information:
A) COVID19 Case is reported as deceased B) COVID19 Case has a reported date of death.

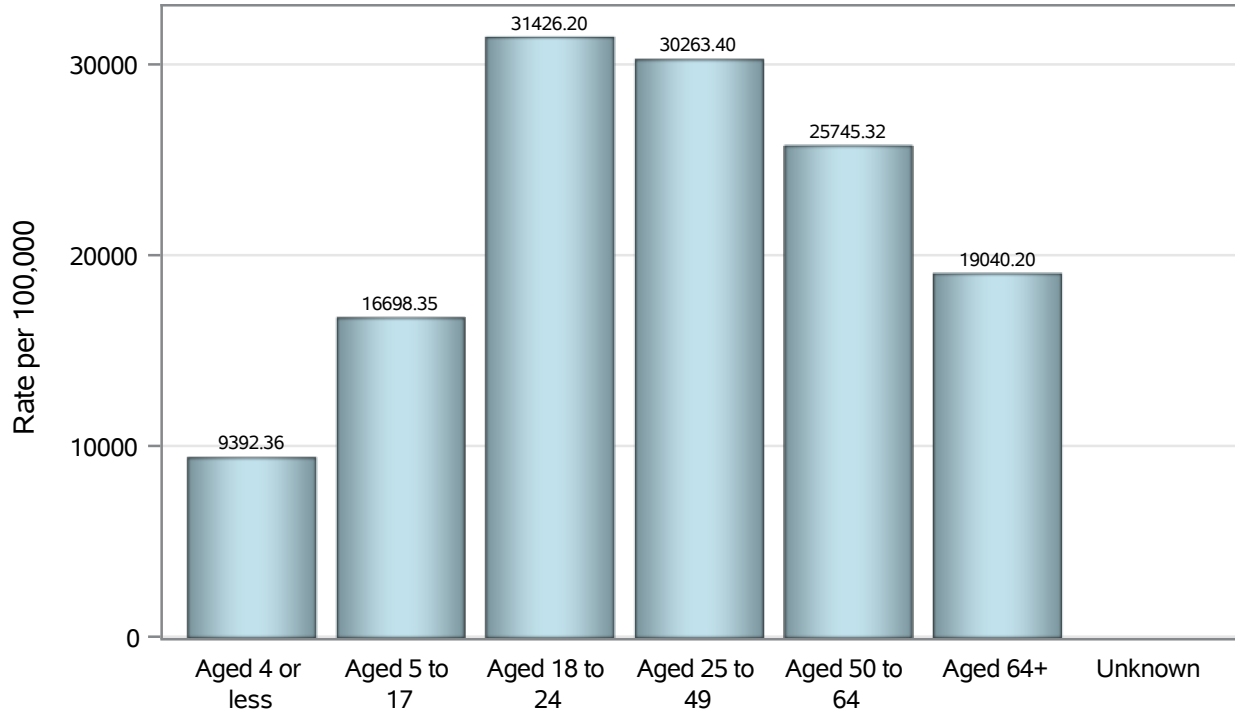
If date of death is missing, then the following is substituted temporarily, in order:
1) Disease onset date 2) Disease diagnosis date
3) Lab result collection date 4) Report date to SNHD.

Investigations are ongoing; data are subject to change.

Reporting through 09MAR2022

North Las Vegas zip codes include 89030, 89031, 89032, 89033, 89036, 89081, 89084, 89085, 89086, 89087.

Case Age Rates in North Las Vegas

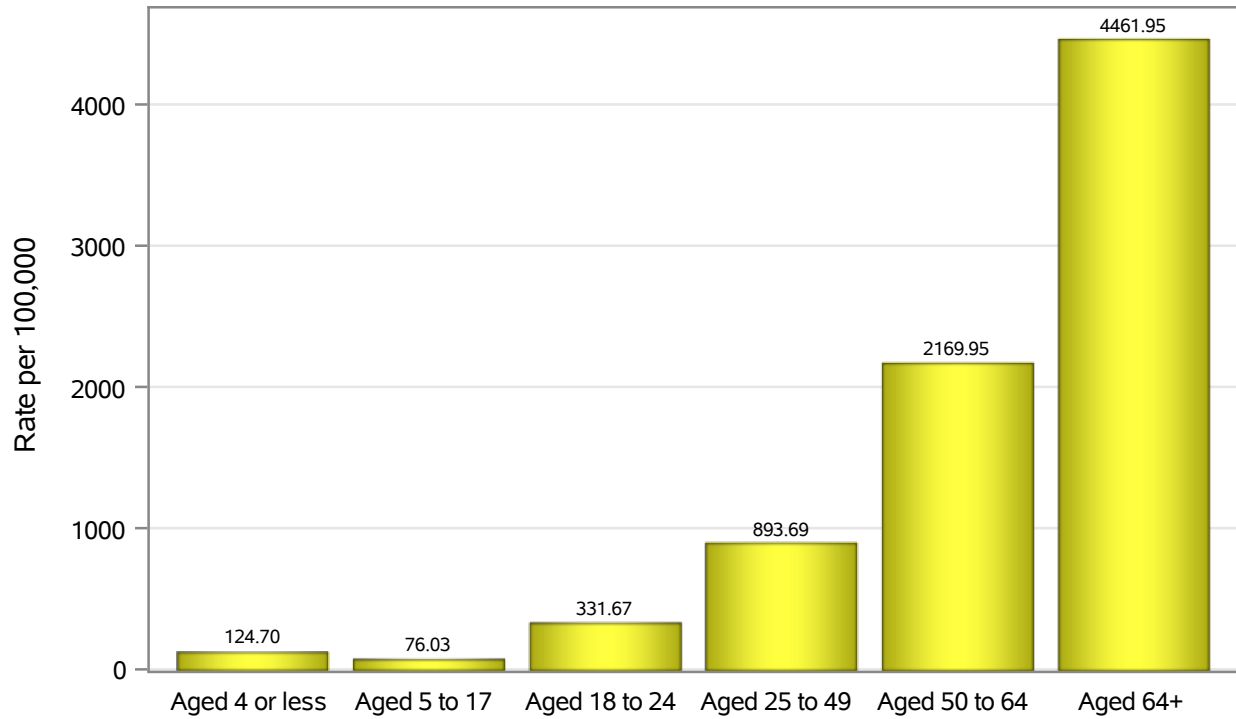


Investigations are ongoing; data are subject to change.

Reporting through 09MAR2022

North Las Vegas zip codes include 89030, 89031, 89032, 89033, 89036, 89081, 89084, 89085, 89086, 89087.

Hospitalization Age Rates in North Las Vegas

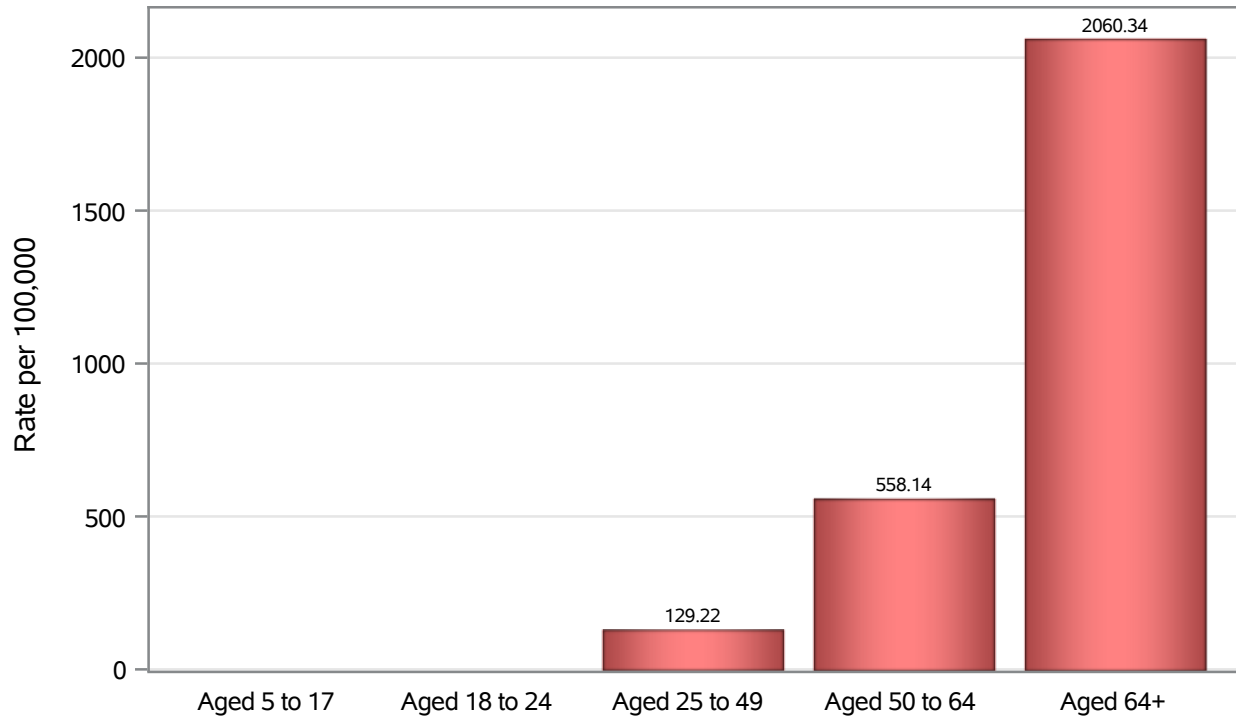


Investigations are ongoing; data are subject to change.

Reporting through 09MAR2022

North Las Vegas zip codes include 89030, 89031, 89032, 89033, 89036, 89081, 89084, 89085, 89086, 89087.

Death Age Rates in North Las Vegas



Investigations are ongoing; data are subject to change.

Reporting through 09MAR2022

North Las Vegas zip codes include 89030, 89031, 89032, 89033, 89036, 89081, 89084, 89085, 89086, 89087.

Table 5: Age and COVID19 in North Las Vegas

Case Status	Age Categories	N	%	Population	Rate per 100,000
Cases	Aged 4 or less	1657	2.9	17,642	9392.4
	Aged 5 to 17	8346	14.8	49,981	16698
	Aged 18 to 24	7201	12.8	22,914	31426
	Aged 25 to 49	25059	44.6	82,803	30263
	Aged 50 to 64	9456	16.8	36,729	25745
	Aged 64+	4519	8.0	23,734	19040
	Unknown	6	0.0	.	.
Hospitalizations	Aged 4 or less	22	0.8	17,642	124.70
	Aged 5 to 17	38	1.4	49,981	76.03
	Aged 18 to 24	76	2.8	22,914	331.67
	Aged 25 to 49	740	27.1	82,803	893.69
	Aged 50 to 64	797	29.2	36,729	2169.9
	Aged 64+	1059	38.8	23,734	4462.0
	Deaths	Aged 5 to 17	1	0.1	49,981
Aged 18 to 24		2	0.2	22,914	.
Aged 25 to 49		107	13.3	82,803	129.22
Aged 50 to 64		205	25.5	36,729	558.14
Aged 64+		489	60.8	23,734	2060.3

Note1: Population data source for calculating rate estimates: U.S. Census Bureau, ACS 5-year estimate.

Note2: Rates for categories with fewer than 12 cases are suppressed due to high relative standard error.

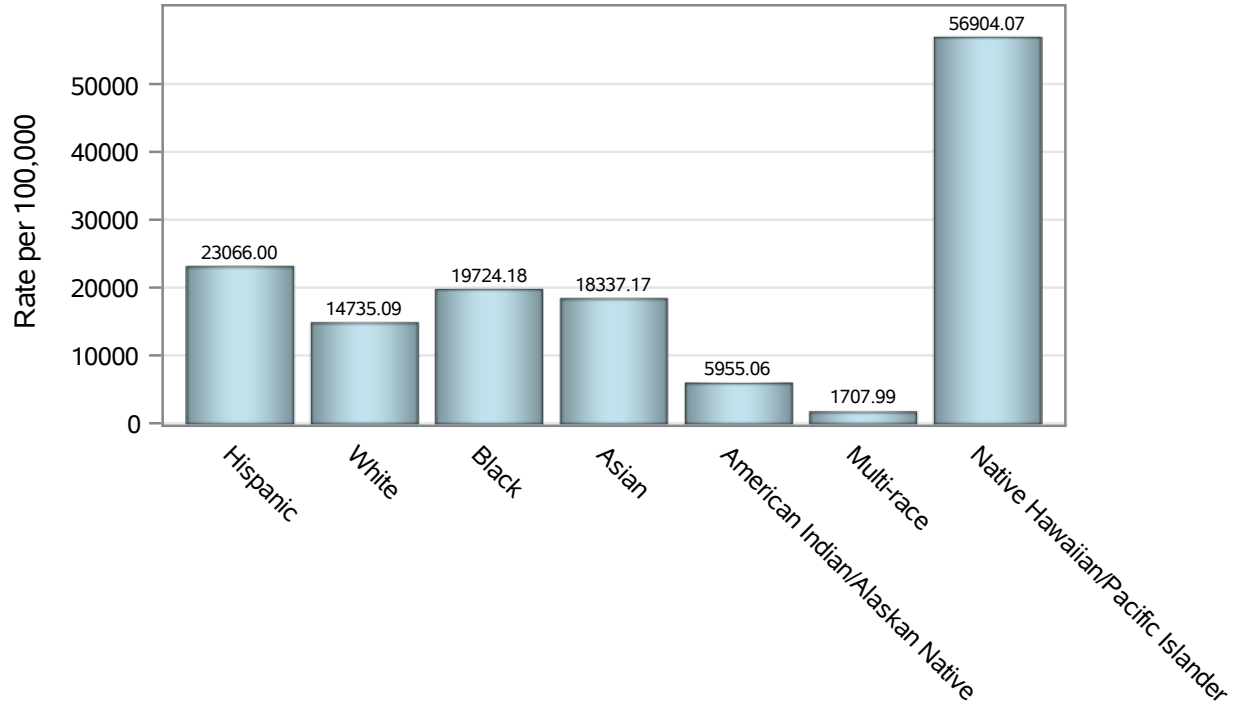
Note3: Hospitalizations are regardless of deceased status; Deaths are regardless of hospitalization status

Investigations are ongoing; data are subject to change.

Reporting through 09MAR2022

North Las Vegas zip codes include 89030, 89031, 89032, 89033, 89036, 89081, 89084, 89085, 89086, 89087.

Case Race/Ethnicity Rates in North Las Vegas

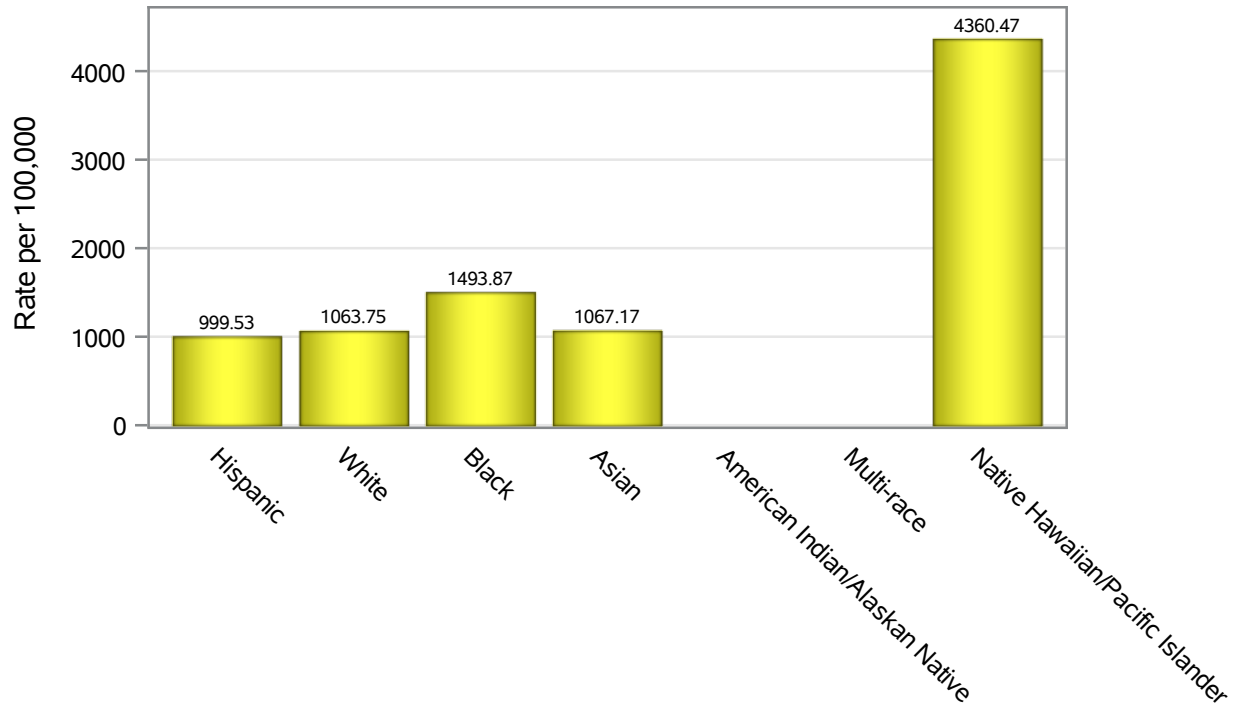


Investigations are ongoing; data are subject to change.

Reporting through 09MAR2022

North Las Vegas zip codes include 89030, 89031, 89032, 89033, 89036, 89081, 89084, 89085, 89086, 89087.

Hospitalization Race/Ethnicity Rates in North Las Vegas

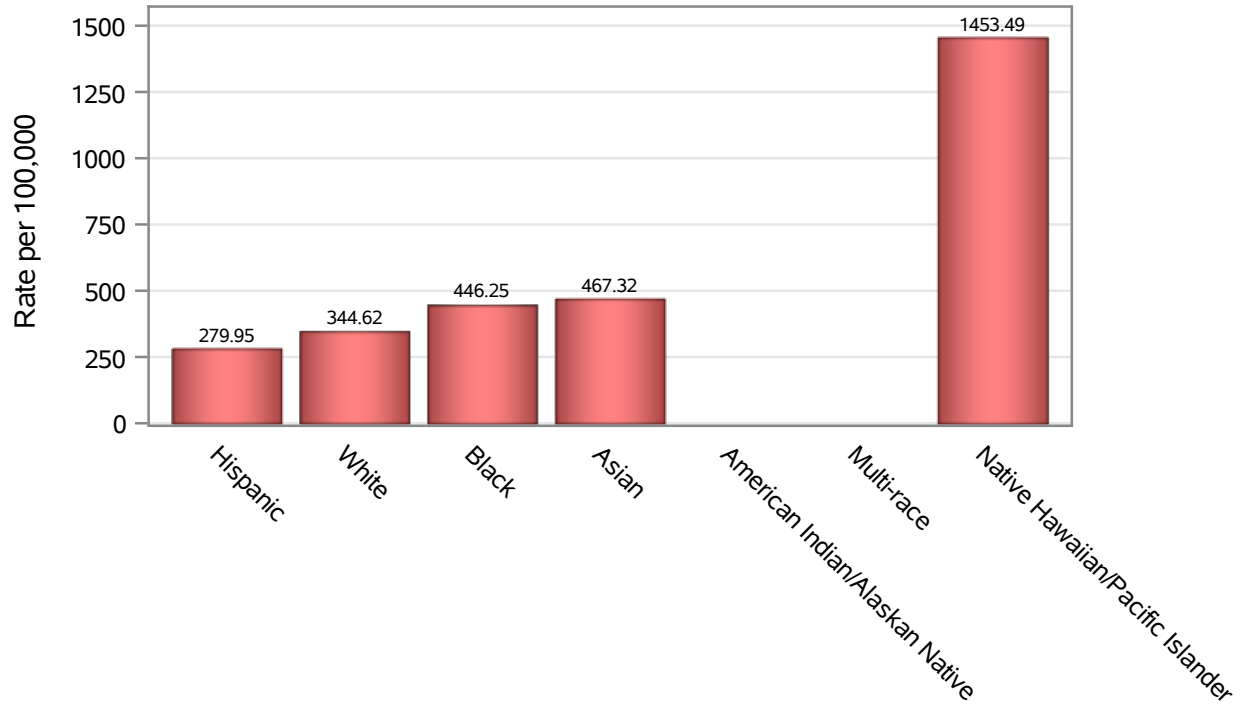


Investigations are ongoing; data are subject to change.

Reporting through 09MAR2022

North Las Vegas zip codes include 89030, 89031, 89032, 89033, 89036, 89081, 89084, 89085, 89086, 89087.

Death Race/Ethnicity Rates in North Las Vegas



Investigations are ongoing; data are subject to change.

Reporting through 09MAR2022

North Las Vegas zip codes include 89030, 89031, 89032, 89033, 89036, 89081, 89084, 89085, 89086, 89087.

Table 6: Race/Ethnicity and COVID19 in North Las Vegas

Case Status	Race Ethnicity Categories	N	%	Population	Rate per 100,000
Cases	Hispanic	22246	39.6	96,445	23066
	White	9364	16.6	63,549	14735
	Black	9282	16.5	47,059	19724
	Asian	2629	4.7	14,337	18337
	American Indian/Alaskan Native	53	0.1	890	5955.1
	Multi-race	166	0.3	9,719	1708.0
	Native Hawaiian/Pacific Islander	783	1.4	1,376	56904
	Unknown	11721	20.8	.	.
Hospitalizations	Hispanic	964	35.3	96,445	999.53
	White	676	24.7	63,549	1063.7
	Black	703	25.7	47,059	1493.9
	Asian	153	5.6	14,337	1067.2
	American Indian/Alaskan Native	11	0.4	890	.
	Multi-race	11	0.4	9,719	.
	Native Hawaiian/Pacific Islander	60	2.2	1,376	4360.5
	Unknown	154	5.6	.	.
Deaths	Hispanic	270	33.6	96,445	279.95
	White	219	27.2	63,549	344.62
	Black	210	26.1	47,059	446.25
	Asian	67	8.3	14,337	467.32
	American Indian/Alaskan Native	6	0.7	890	.
	Multi-race	7	0.9	9,719	.
	Native Hawaiian/Pacific Islander	20	2.5	1,376	1453.5
	Unknown	5	0.6	.	.

Note1: Population data source for calculating rate estimates: U.S. Census Bureau, ACS 5-year estimate.

Note2: Rates for categories with fewer than 12 cases are suppressed due to high relative standard error.

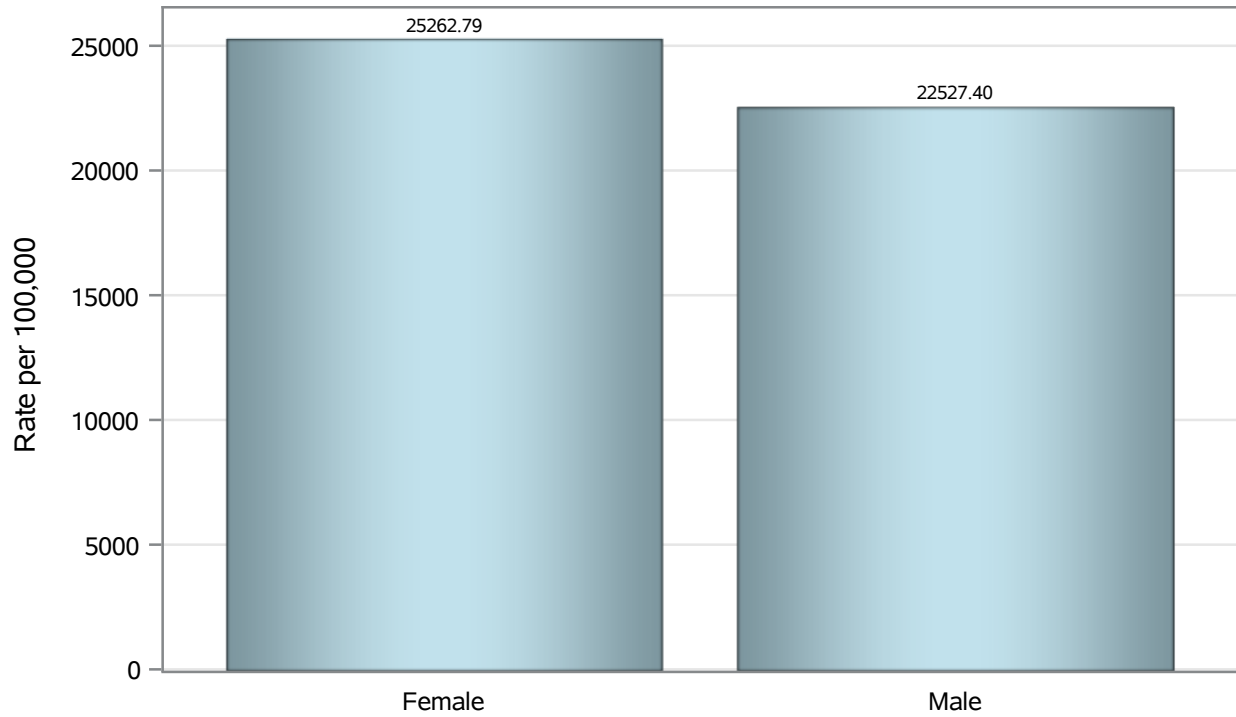
Note3: Hospitalizations are regardless of deceased status; Deaths are regardless of hospitalization status

Investigations are ongoing; data are subject to change.

Reporting through 09MAR2022

North Las Vegas zip codes include 89030, 89031, 89032, 89033, 89036, 89081, 89084, 89085, 89086, 89087.

Case Birth Sex Rates in North Las Vegas

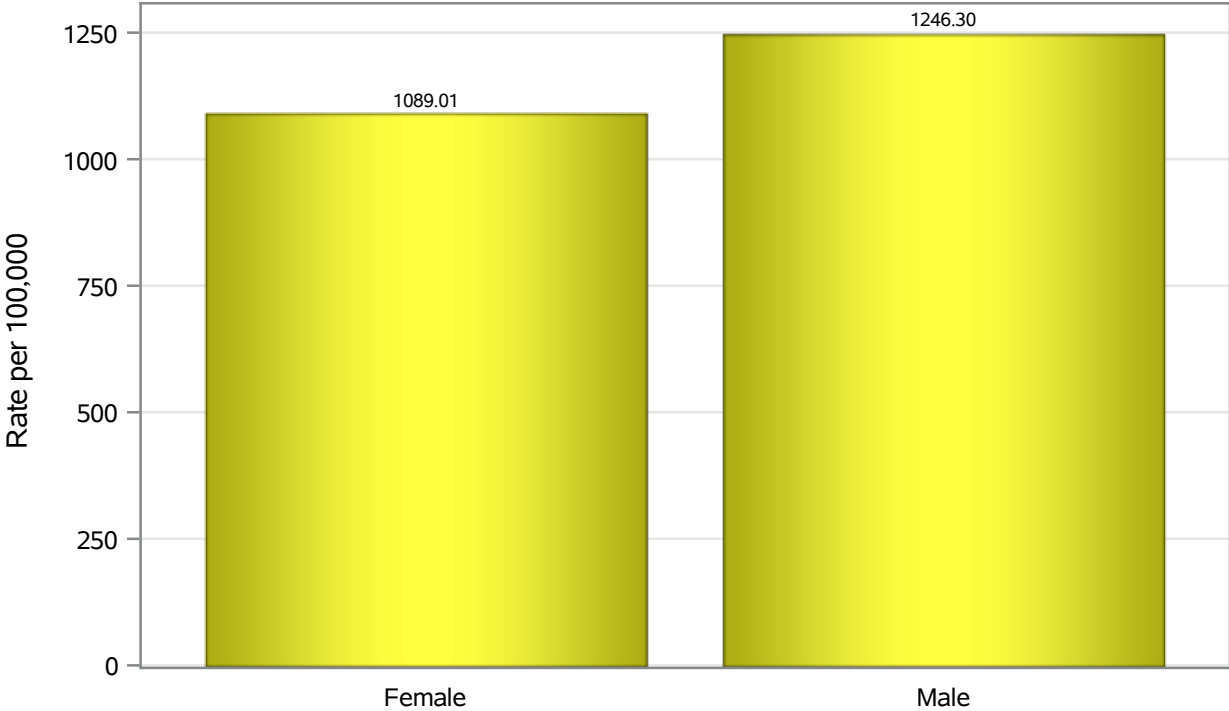


Investigations are ongoing; data are subject to change.

Reporting through 09MAR2022

North Las Vegas zip codes include 89030, 89031, 89032, 89033, 89036, 89081, 89084, 89085, 89086, 89087.

Hospitalization Birth Sex Rates in North Las Vegas

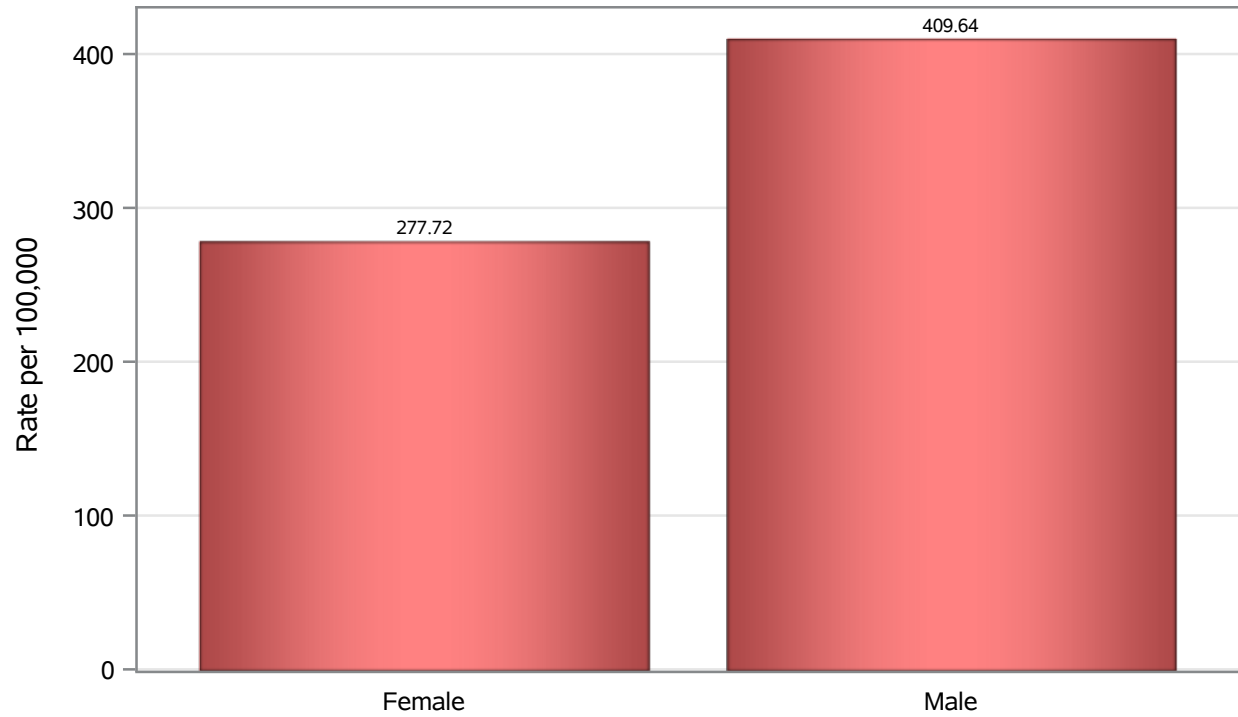


Investigations are ongoing; data are subject to change.

Reporting through 09MAR2022

North Las Vegas zip codes include 89030, 89031, 89032, 89033, 89036, 89081, 89084, 89085, 89086, 89087.

Death Birth Sex Rates in North Las Vegas



Investigations are ongoing; data are subject to change.

Reporting through 09MAR2022

North Las Vegas zip codes include 89030, 89031, 89032, 89033, 89036, 89081, 89084, 89085, 89086, 89087.

Table 7: Birth Sex and COVID19 in North Las Vegas

Case Status	Birth Sex Categories	N	%	Population	Rate per 100,000
Cases	Female	30018	53.4	118823	25263
	Male	25902	46.1	114980	22527
	Unknown	324	0.6	.	.
Hospitalizations	Female	1294	47.4	118823	1089.0
	Male	1433	52.5	114980	1246.3
	Unknown	5	0.2	.	.
Deaths	Female	330	41.0	118823	277.72
	Male	471	58.6	114980	409.64
	Unknown	3	0.4	.	.

Note1: Population data source for calculating rate estimates: U.S. Census Bureau, ACS 5-year estimate.

Note2: Rates for categories with fewer than 12 cases are suppressed due to high relative standard error.

Note3: Hospitalizations are regardless of deceased status; Deaths are regardless of hospitalization status

Investigations are ongoing; data are subject to change.

Reporting through 09MAR2022

North Las Vegas zip codes include 89030, 89031, 89032, 89033, 89036, 89081, 89084, 89085, 89086, 89087.