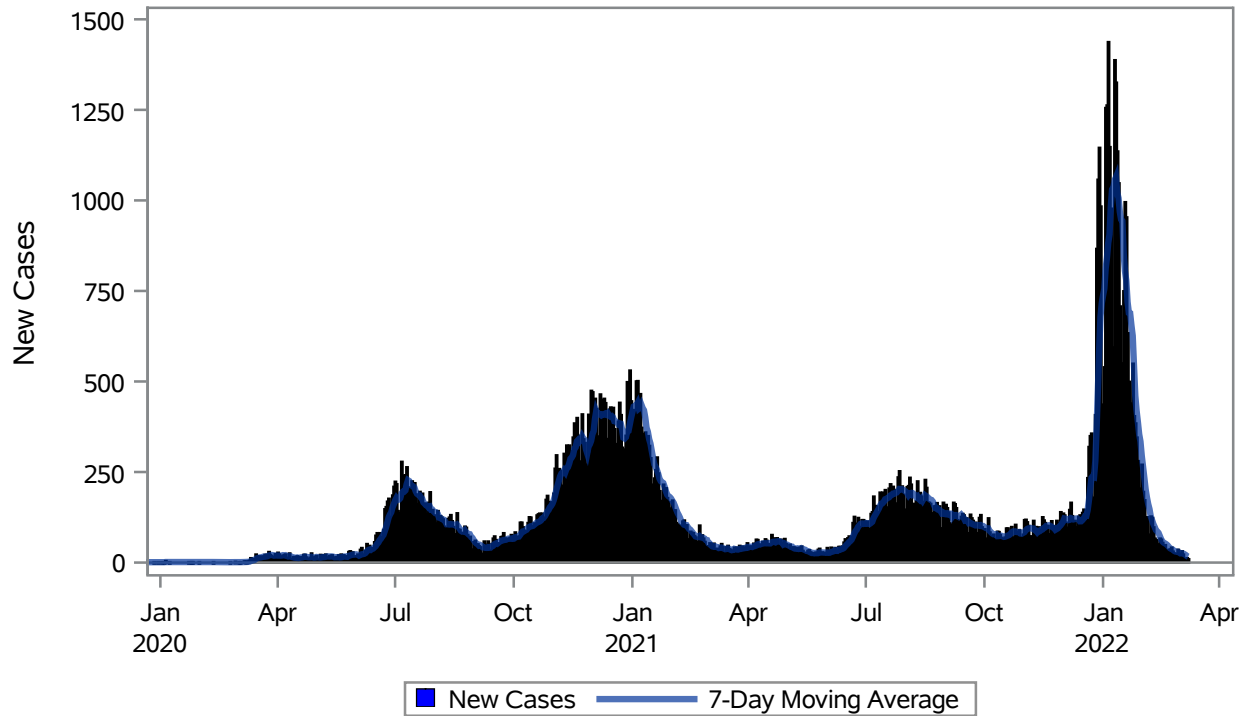


### COVID19 Cases for Henderson, 7-Day Moving Average



Investigations are ongoing; data are subject to change.

Reporting through 09MAR2022

Henderson zip codes include 89002, 89011, 89012, 89014, 89015, 89044, 89052, 89074, 89119, 89120, 89122, 89123, 89124, 89183.

**Table 1: New COVID19 Cases and 7-Day Moving Average in Henderson, Previous Two Weeks**

Date (Daily)	New Cases	7-Day Moving Average
24FEB2022	30	36.00
25FEB2022	25	32.71
26FEB2022	20	30.71
27FEB2022	24	30.14
28FEB2022	35	30.14
01MAR2022	20	27.86
02MAR2022	24	25.43
03MAR2022	31	25.57
04MAR2022	22	25.14
05MAR2022	7	23.29
06MAR2022	9	21.14
07MAR2022	12	17.86

---

Note1: Event Date is calculated as follows based on completed information:

1) Disease onset date 2) Disease diagnosis date 3) Lab result collection date 4) Report date to SNHD.

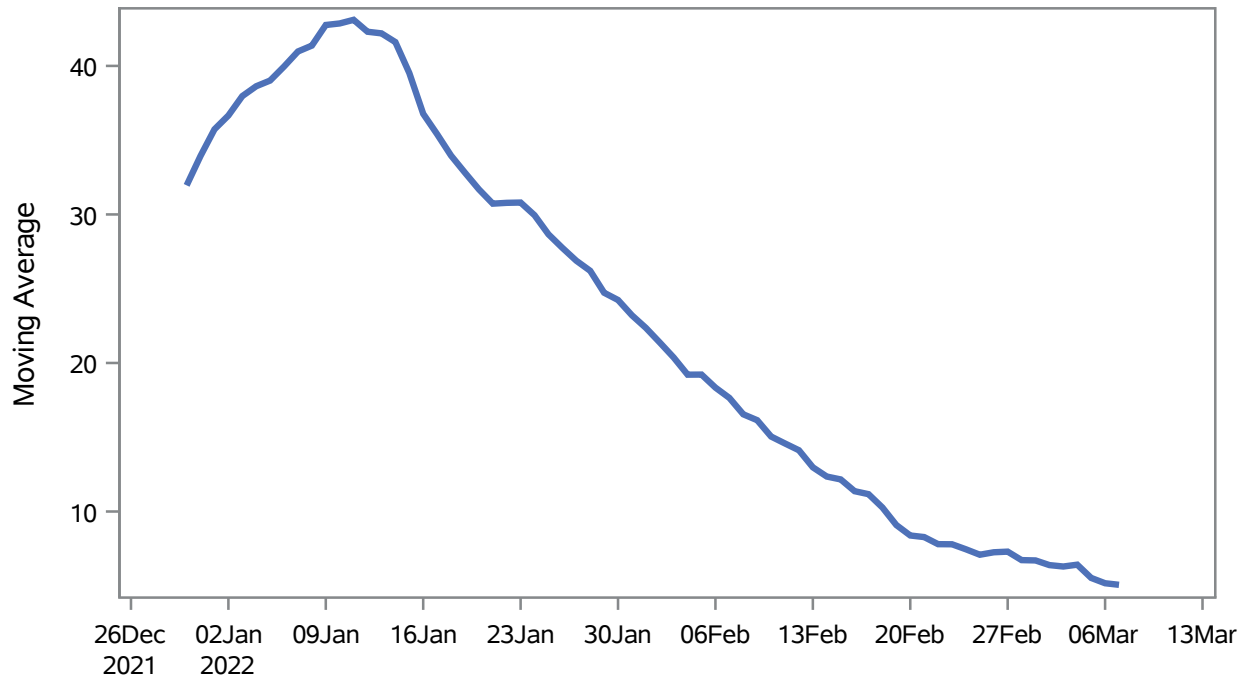
---

**Investigations are ongoing; data are subject to change.**

**Reporting through 09MAR2022**

**Henderson zip codes include 89002, 89011, 89012, 89014, 89015, 89044, 89052, 89074, 89119, 89120, 89122, 89123, 89124, 89183.**

### Percent of People Receiving COVID-19 Viral Tests Who Have Positive Results in Henderson



Investigations are ongoing; data are subject to change.

Reporting through 09MAR2022

Henderson zip codes include 89002, 89011, 89012, 89014, 89015, 89044, 89052, 89074, 89119, 89120, 89122, 89123, 89124, 89183.

**Table 2: Percent of People Receiving COVID-19 Viral Tests Who Have Positive Results in Henderson**

Collection Date	Positive	Negative	Equivocal	Total	% Positivity	7-Day Moving Average
21FEB2022	46	488	1	535	8.60	8.28
22FEB2022	39	871	2	912	4.28	7.80
23FEB2022	47	947	2	996	4.72	7.79
24FEB2022	43	588	1	632	6.80	7.46
25FEB2022	28	398	1	427	6.56	7.09
26FEB2022	33	263		296	11.15	7.25
27FEB2022	23	233		256	8.98	7.30
28FEB2022	44	906	5	955	4.61	6.73
01MAR2022	24	557	1	582	4.12	6.71
02MAR2022	24	927	3	954	2.52	6.39
03MAR2022	38	578	3	619	6.14	6.30
04MAR2022	30	374		404	7.43	6.42
05MAR2022	12	232	1	245	4.90	5.53
06MAR2022	12	173		185	6.49	5.17
07MAR2022	26	643	3	672	3.87	5.07

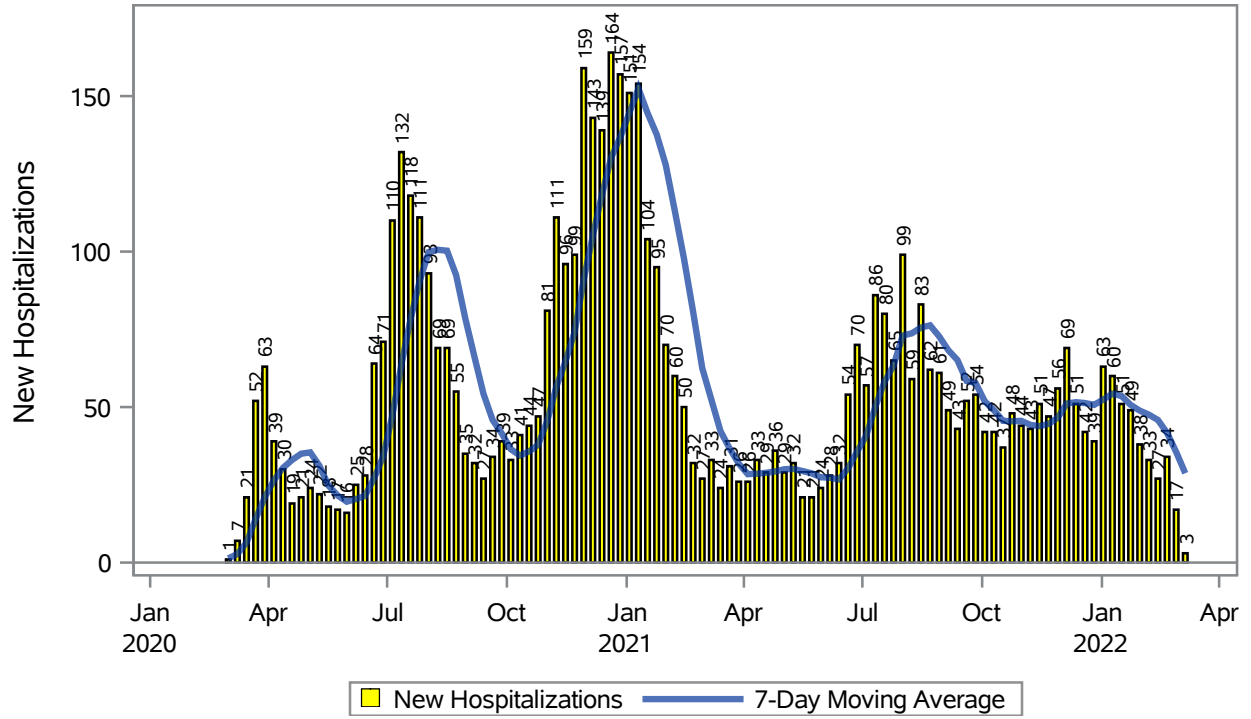
Note: Testing Data includes a 3 day delay

**Investigations are ongoing; data are subject to change.**

**Reporting through 09MAR2022**

**Henderson zip codes include 89002, 89011, 89012, 89014, 89015, 89044, 89052, 89074, 89119, 89120, 89122, 89123, 89124, 89183.**

## COVID19 Hospitalizations for Henderson, 7-Day Moving Average



Investigations are ongoing; data are subject to change.  
Reporting through 09MAR2022

Henderson zip codes include 89002, 89011, 89012, 89014, 89015, 89044, 89052, 89074, 89119, 89120, 89122, 89123, 89124, 89183.

**Table 3: New COVID19-Related Hospitalizations and 7-Day Moving Average in Henderson, previous month**

Week	Hospitalizations	7-Day Moving Average
13FEB2022	27	45.9
20FEB2022	34	41.7
27FEB2022	17	35.6
06MAR2022	3	28.7

---

Note1: Admission Date is calculated as follows based on completed information:  
A) COVID19 Case is hospitalized B) COVID19 Case has a hospital admission date.

If admission date is missing, then the following is substituted temporarily, in order:  
1) Disease onset date 2) Disease diagnosis date 3) Lab result collection date 4) Report date to SNHD.

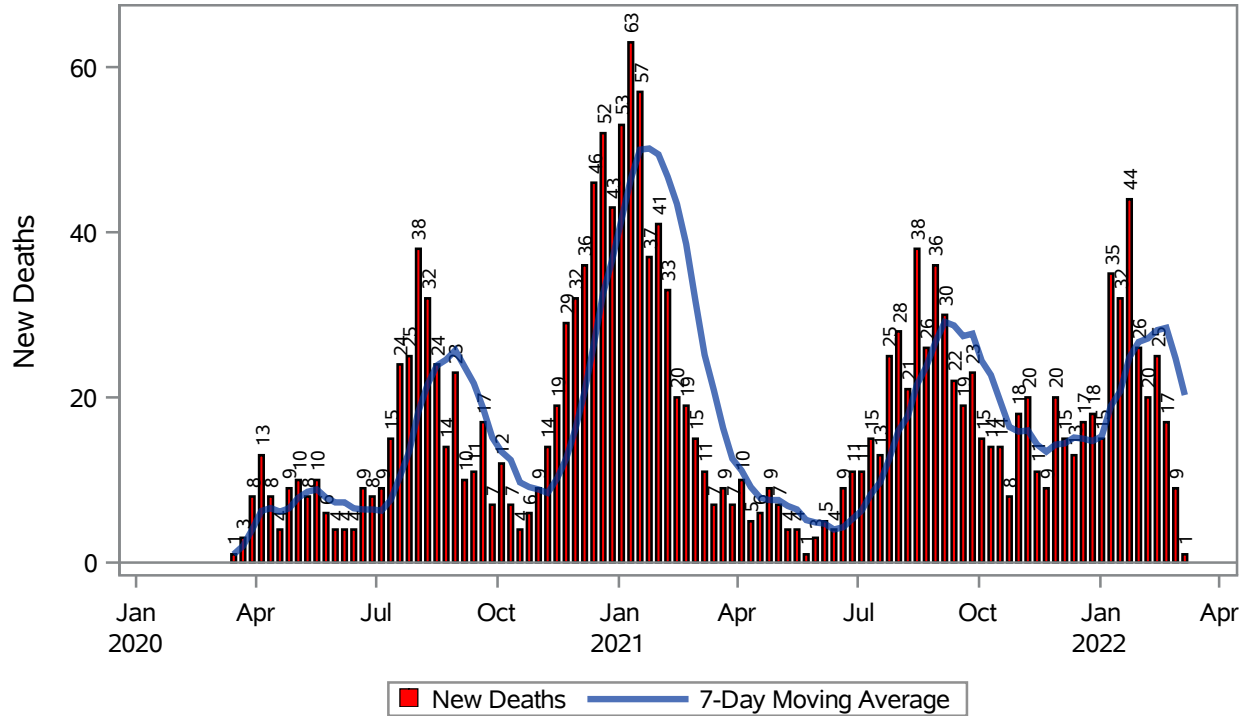
---

**Investigations are ongoing; data are subject to change.**

**Reporting through 09MAR2022**

**Henderson zip codes include 89002, 89011, 89012, 89014, 89015, 89044, 89052, 89074, 89119, 89120, 89122, 89123, 89124, 89183.**

### COVID19 Deaths for Henderson, 7-Day Moving Average



**Table 4: New COVID19-Related Deaths and 7-Day Moving Average in Henderson, Previous Month**

Week	Deaths	7-Day Moving Average
13FEB2022	25	28.1
20FEB2022	17	28.4
27FEB2022	9	24.7
06MAR2022	1	20.3

---

Note1: Date of Death is calculated as follows based on completed information:  
A) COVID19 Case is reported as deceased B) COVID19 Case has a reported date of death.

If date of death is missing, then the following is substituted temporarily, in order:  
1) Disease onset date 2) Disease diagnosis date  
3) Lab result collection date 4) Report date to SNHD.

---

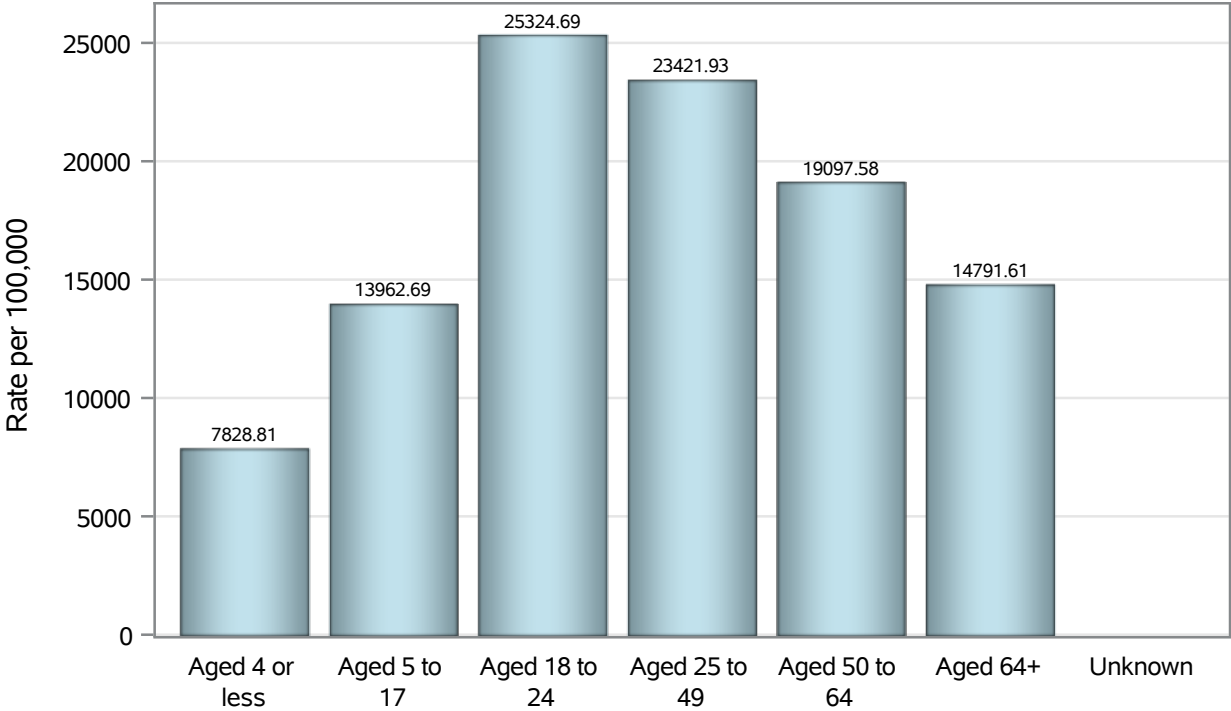
**Investigations are ongoing; data are subject to change.**

**Reporting through 09MAR2022**

**Henderson zip codes include 89002, 89011, 89012, 89014, 89015, 89044, 89052, 89074, 89119, 89120, 89122, 89123, 89124, 89183.**



### Case Age Rates in Henderson

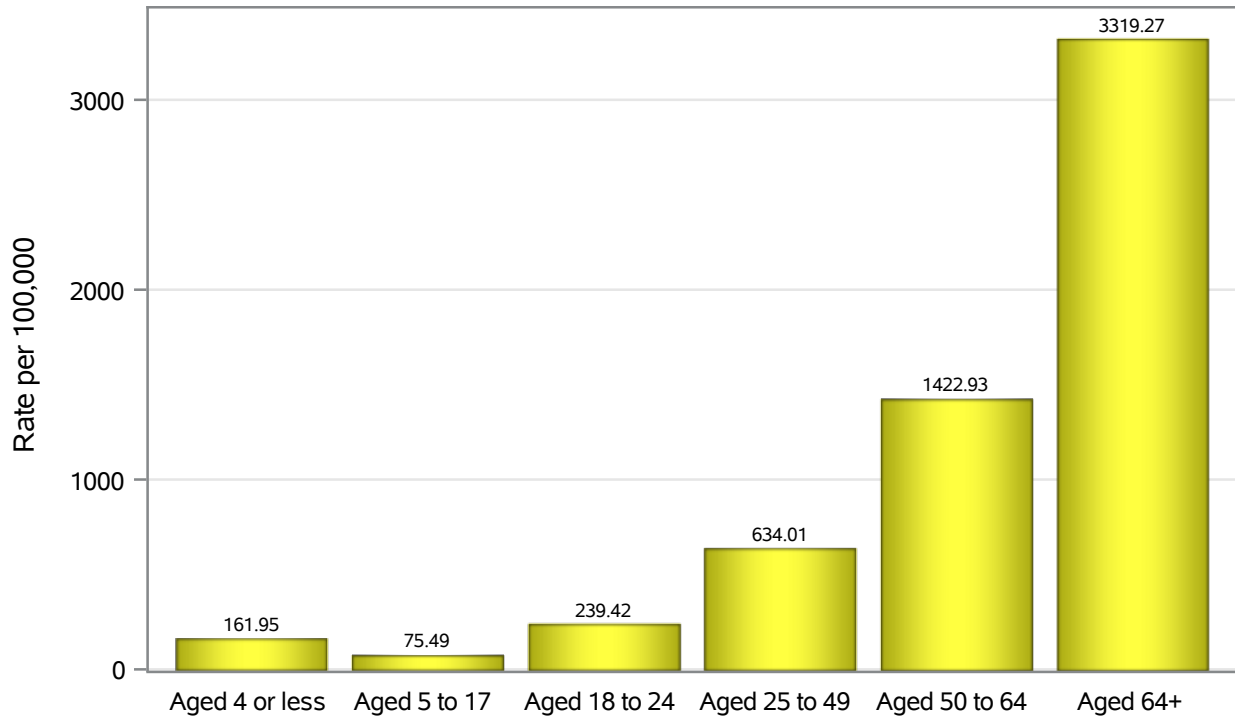


Investigations are ongoing; data are subject to change.

Reporting through 09MAR2022

Henderson zip codes include 89002, 89011, 89012, 89014, 89015, 89044, 89052, 89074, 89119, 89120, 89122, 89123, 89124, 89183.

### Hospitalization Age Rates in Henderson

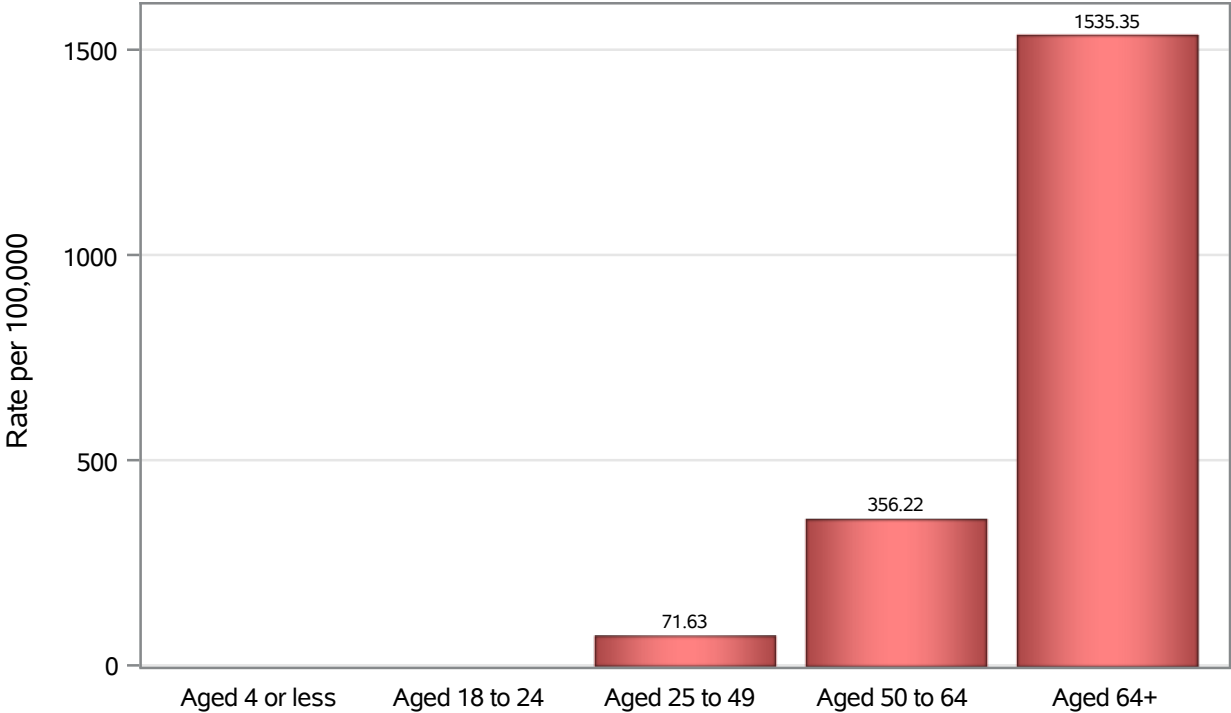


Investigations are ongoing; data are subject to change.

Reporting through 09MAR2022

Henderson zip codes include 89002, 89011, 89012, 89014, 89015, 89044, 89052, 89074, 89119, 89120, 89122, 89123, 89124, 89183.

### Death Age Rates in Henderson



Investigations are ongoing; data are subject to change.

Reporting through 09MAR2022

Henderson zip codes include 89002, 89011, 89012, 89014, 89015, 89044, 89052, 89074, 89119, 89120, 89122, 89123, 89124, 89183.

**Table 5: Age and COVID19 in Henderson**

Case Status	Age Categories	N	%	Population	Rate per 100,000
Cases	Aged 4 or less	2272	2.2	29,021	7828.8
	Aged 5 to 17	11467	11.3	82,126	13963
	Aged 18 to 24	11212	11.1	44,273	25325
	Aged 25 to 49	43814	43.3	187064	23422
	Aged 50 to 64	19622	19.4	102746	19098
	Aged 64+	12794	12.6	86,495	14792
	Unknown	18	0.0	.	.
Hospitalizations	Aged 4 or less	47	0.8	29,021	161.95
	Aged 5 to 17	62	1.1	82,126	75.49
	Aged 18 to 24	106	1.8	44,273	239.42
	Aged 25 to 49	1186	20.7	187064	634.01
	Aged 50 to 64	1462	25.5	102746	1422.9
	Aged 64+	2871	50.1	86,495	3319.3
	Deaths	Aged 4 or less	1	0.1	29,021
Aged 18 to 24		3	0.2	44,273	.
Aged 25 to 49		134	7.3	187064	71.63
Aged 50 to 64		366	20.0	102746	356.22
Aged 64+		1328	72.5	86,495	1535.3

Note1: Population data source for calculating rate estimates: U.S. Census Bureau, ACS 5-year estimate.

Note2: Rates for categories with fewer than 12 cases are suppressed due to high relative standard error.

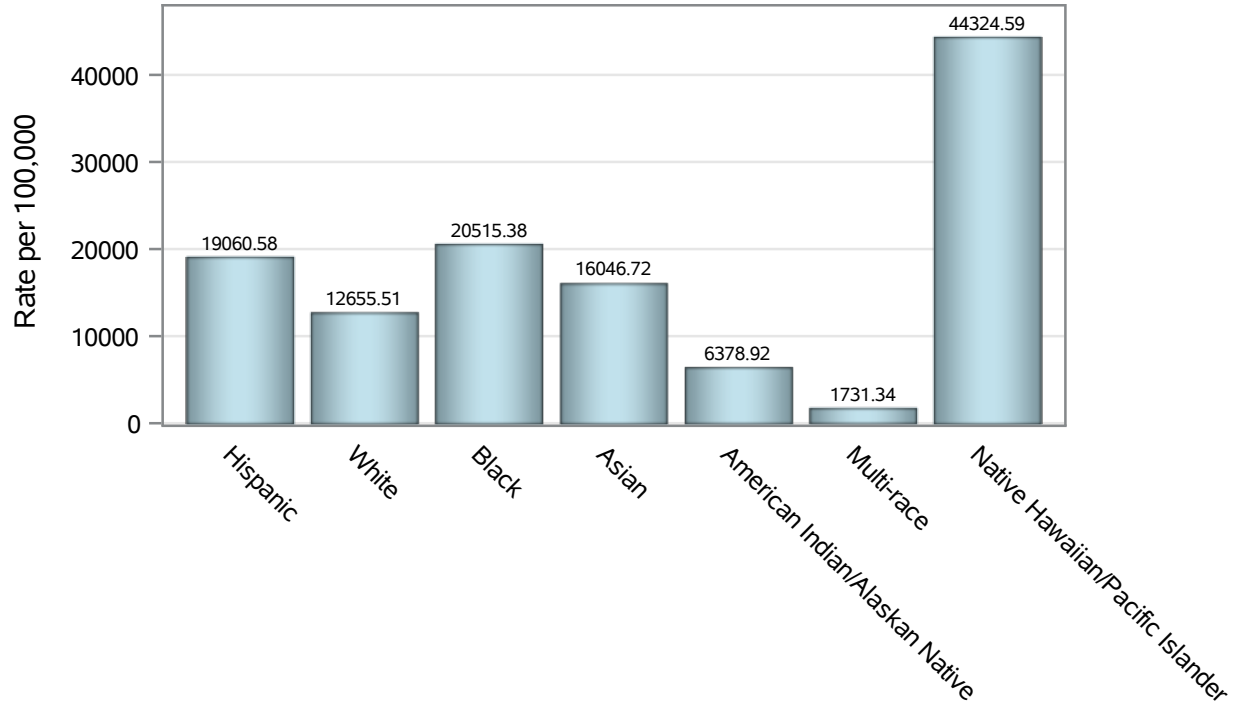
Note3: Hospitalizations are regardless of deceased status; Deaths are regardless of hospitalization status

**Investigations are ongoing; data are subject to change.**

**Reporting through 09MAR2022**

**Henderson zip codes include 89002, 89011, 89012, 89014, 89015, 89044, 89052, 89074, 89119, 89120, 89122, 89123, 89124, 89183.**

### Case Race/Ethnicity Rates in Henderson

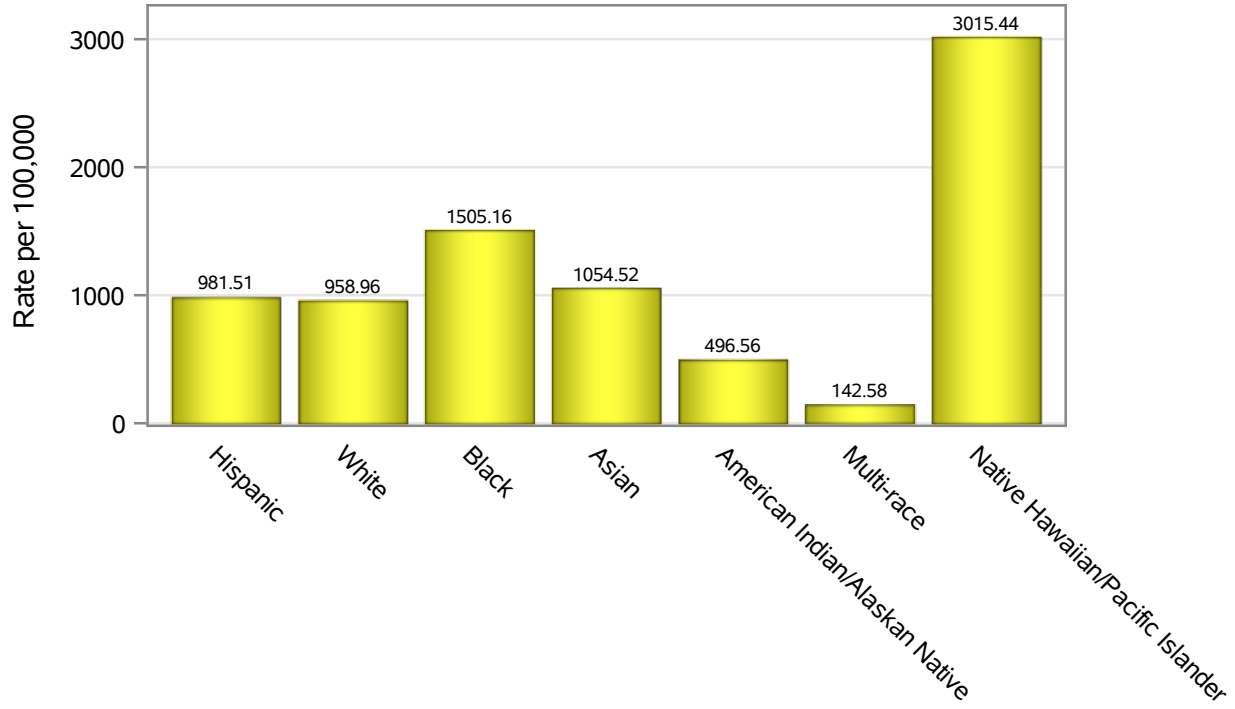


Investigations are ongoing; data are subject to change.

Reporting through 09MAR2022

Henderson zip codes include 89002, 89011, 89012, 89014, 89015, 89044, 89052, 89074, 89119, 89120, 89122, 89123, 89124, 89183.

### Hospitalization Race/Ethnicity Rates in Henderson

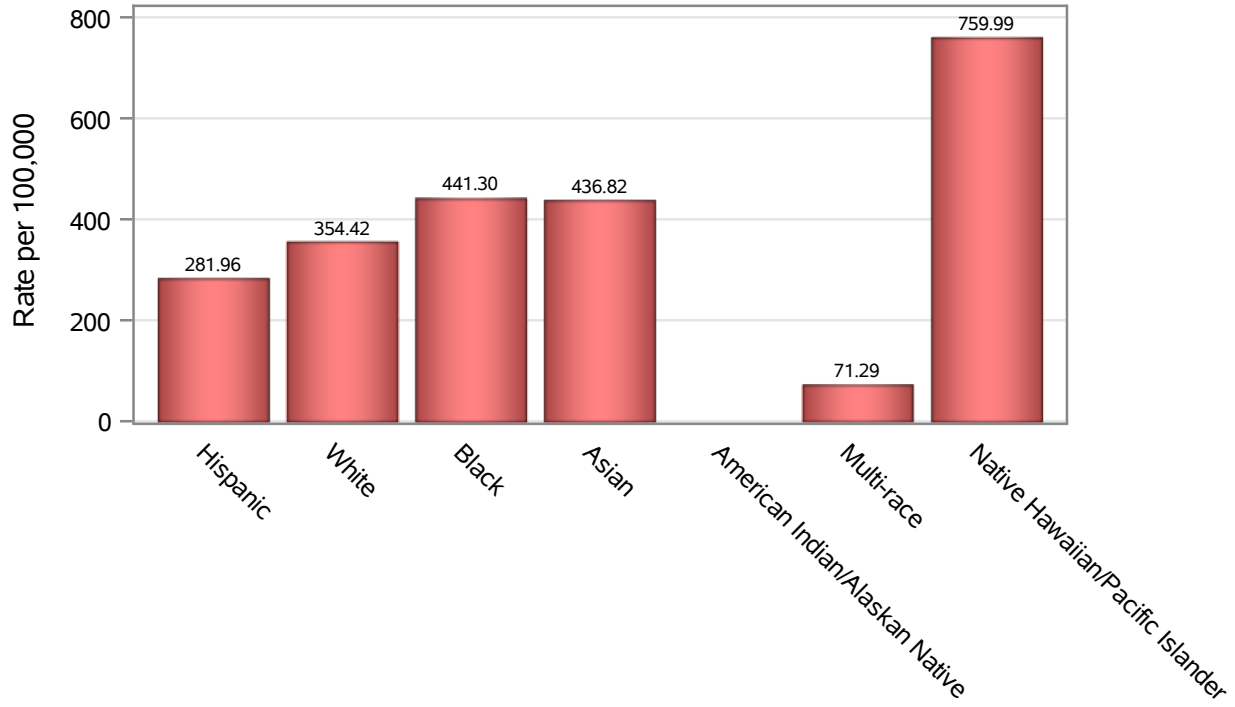


Investigations are ongoing; data are subject to change.

Reporting through 09MAR2022

Henderson zip codes include 89002, 89011, 89012, 89014, 89015, 89044, 89052, 89074, 89119, 89120, 89122, 89123, 89124, 89183.

### Death Race/Ethnicity Rates in Henderson



Investigations are ongoing; data are subject to change.

Reporting through 09MAR2022

Henderson zip codes include 89002, 89011, 89012, 89014, 89015, 89044, 89052, 89074, 89119, 89120, 89122, 89123, 89124, 89183.

**Table 6: Race/Ethnicity and COVID19 in Henderson**

Case Status	Race Ethnicity Categories	N	%	Population	Rate per 100,000
Cases	Hispanic	23187	22.9	121649	19061
	White	36886	36.4	291462	12656
	Black	7810	7.7	38,069	20515
	Asian	8339	8.2	51,967	16047
	American Indian/Alaskan Native	167	0.2	2,618	6378.9
	Multi-race	340	0.3	19,638	1731.3
	Native Hawaiian/Pacific Islander	1808	1.8	4,079	44325
	Unknown	22662	22.4	.	.
Hospitalizations	Hispanic	1194	20.8	121649	981.51
	White	2795	48.7	291462	958.96
	Black	573	10.0	38,069	1505.2
	Asian	548	9.6	51,967	1054.5
	American Indian/Alaskan Native	13	0.2	2,618	496.56
	Multi-race	28	0.5	19,638	142.58
	Native Hawaiian/Pacific Islander	123	2.1	4,079	3015.4
	Unknown	460	8.0	.	.
Deaths	Hispanic	343	18.7	121649	281.96
	White	1033	56.4	291462	354.42
	Black	168	9.2	38,069	441.30
	Asian	227	12.4	51,967	436.82
	American Indian/Alaskan Native	6	0.3	2,618	.
	Multi-race	14	0.8	19,638	71.29
	Native Hawaiian/Pacific Islander	31	1.7	4,079	759.99
	Unknown	10	0.5	.	.

Note1: Population data source for calculating rate estimates: U.S. Census Bureau, ACS 5-year estimate.

Note2: Rates for categories with fewer than 12 cases are suppressed due to high relative standard error.

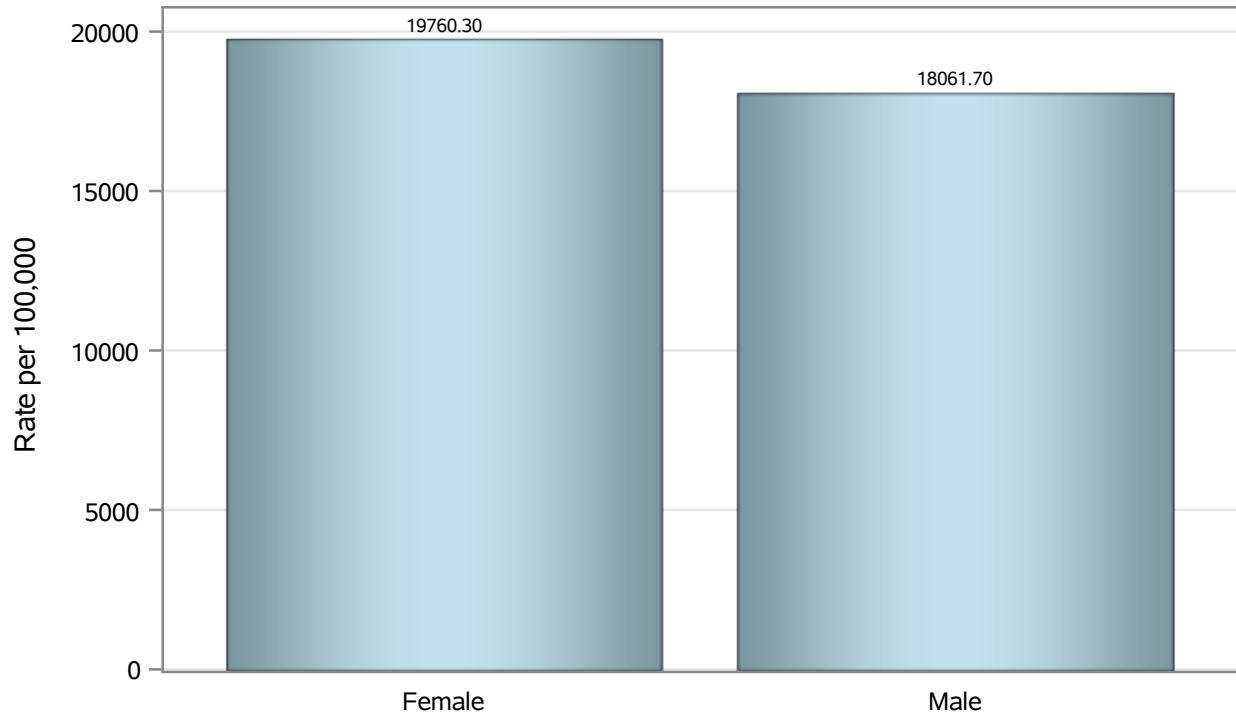
Note3: Hospitalizations are regardless of deceased status; Deaths are regardless of hospitalization status

**Investigations are ongoing; data are subject to change.  
Reporting through 09MAR2022**

**Henderson zip codes include 89002, 89011, 89012, 89014, 89015, 89044, 89052, 89074, 89119, 89120, 89122, 89123, 89124, 89183.**



### Case Birth Sex Rates in Henderson

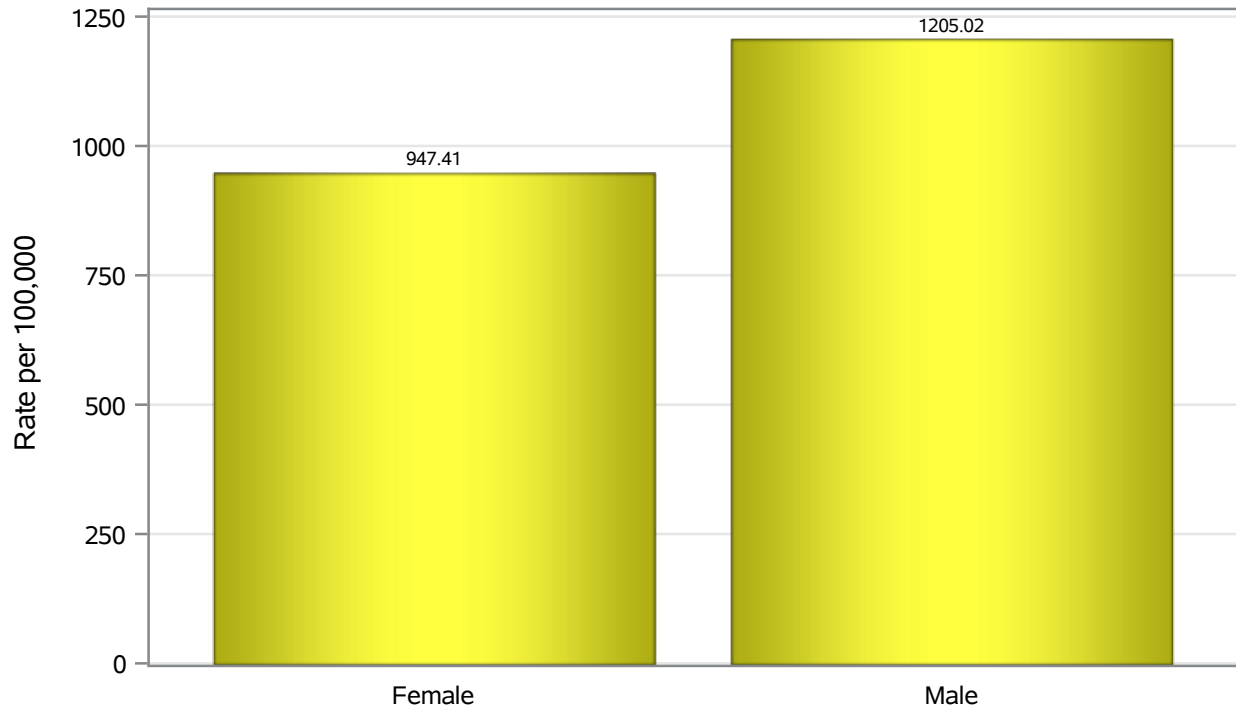


Investigations are ongoing; data are subject to change.

Reporting through 09MAR2022

Henderson zip codes include 89002, 89011, 89012, 89014, 89015, 89044, 89052, 89074, 89119, 89120, 89122, 89123, 89124, 89183.

### Hospitalization Birth Sex Rates in Henderson

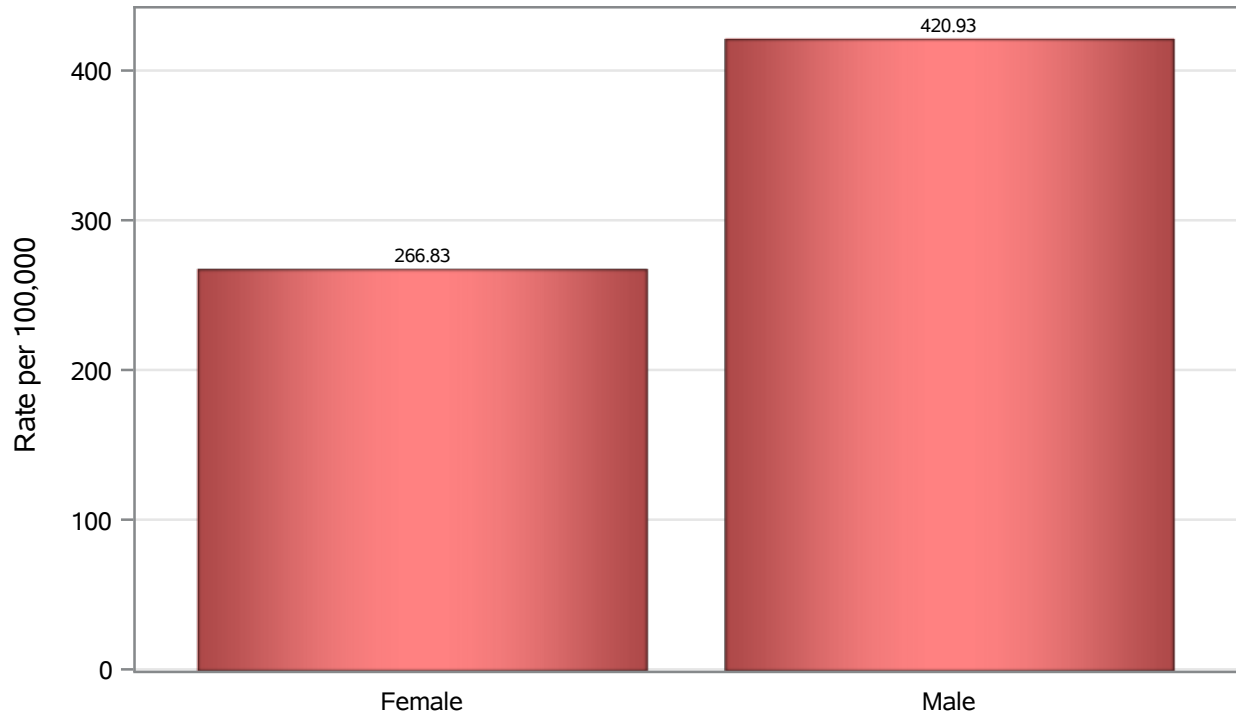


Investigations are ongoing; data are subject to change.

Reporting through 09MAR2022

Henderson zip codes include 89002, 89011, 89012, 89014, 89015, 89044, 89052, 89074, 89119, 89120, 89122, 89123, 89124, 89183.

### Death Birth Sex Rates in Henderson



Investigations are ongoing; data are subject to change.

Reporting through 09MAR2022

Henderson zip codes include 89002, 89011, 89012, 89014, 89015, 89044, 89052, 89074, 89119, 89120, 89122, 89123, 89124, 89183.

**Table 7: Birth Sex and COVID19 in Henderson**

Case Status	Birth Sex Categories	N	%	Population	Rate per 100,000
Cases	Female	52727	52.1	266833	19760
	Male	47844	47.3	264892	18062
	Unknown	628	0.6	.	.
Hospitalizations	Female	2528	44.1	266833	947.41
	Male	3192	55.7	264892	1205.0
	Unknown	14	0.2	.	.
Deaths	Female	712	38.9	266833	266.83
	Male	1115	60.9	264892	420.93
	Unknown	5	0.3	.	.

Note1: Population data source for calculating rate estimates: U.S. Census Bureau, ACS 5-year estimate.

Note2: Rates for categories with fewer than 12 cases are suppressed due to high relative standard error.

Note3: Hospitalizations are regardless of deceased status; Deaths are regardless of hospitalization status

**Investigations are ongoing; data are subject to change.**

**Reporting through 09MAR2022**

**Henderson zip codes include 89002, 89011, 89012, 89014, 89015, 89044, 89052, 89074, 89119, 89120, 89122, 89123, 89124, 89183.**