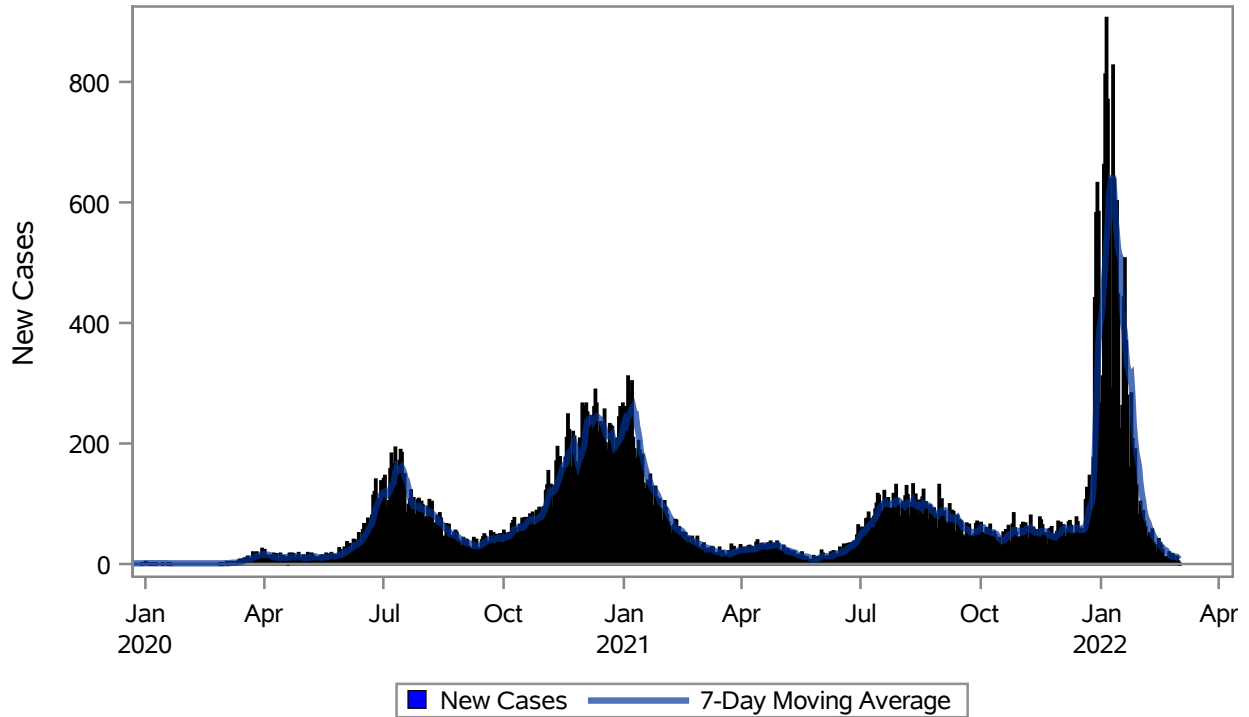


### COVID19 Cases for North Las Vegas, 7-Day Moving Average



Investigations are ongoing; data are subject to change.

Reporting through 02MAR2022

North Las Vegas zip codes include 89030, 89031, 89032, 89033, 89036, 89081, 89084, 89085, 89086, 89087.

**Table 1: New COVID19 Cases and 7-Day Moving Average in North Las Vegas, Previous Two Weeks**

Date (Daily)	New Cases	7-Day Moving Average
17FEB2022	23	27.29
18FEB2022	9	24.14
19FEB2022	11	23.29
20FEB2022	7	22.14
21FEB2022	11	17.86
22FEB2022	19	15.71
23FEB2022	15	13.57
24FEB2022	16	12.57
25FEB2022	15	13.43
26FEB2022	2	12.14
27FEB2022	4	11.71
28FEB2022	12	11.86

---

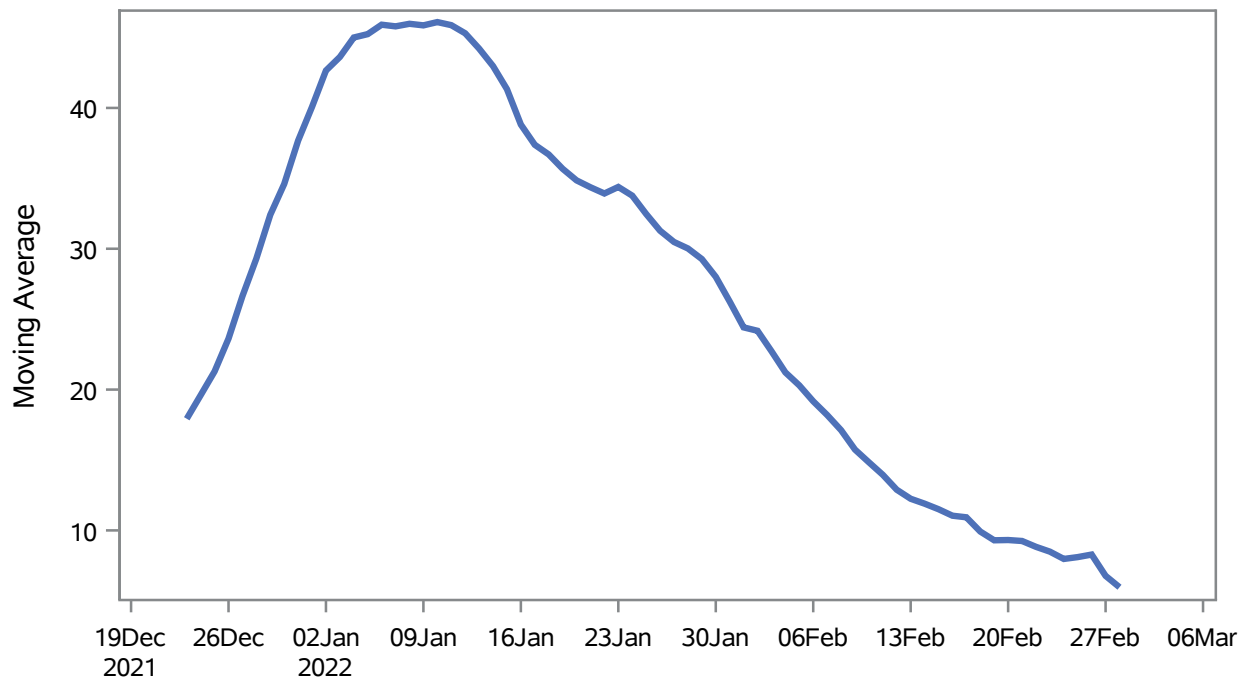
Note1: Event Date is calculated as follows based on completed information:  
1) Disease onset date 2) Disease diagnosis date 3) Lab result collection date 4) Report date to SNHD.

---

**Investigations are ongoing; data are subject to change.  
Reporting through 02MAR2022**

**North Las Vegas zip codes include 89030, 89031, 89032, 89033, 89036, 89081, 89084, 89085, 89086, 89087.**

### Percent of People Receiving COVID-19 Viral Tests Who Have Positive Results in North Las Vegas



Investigations are ongoing; data are subject to change.

Reporting through 02MAR2022

North Las Vegas zip codes include 89030, 89031, 89032, 89033, 89036, 89081, 89084, 89085, 89086, 89087.

**Table 2: Percent of People Receiving COVID-19 Viral Tests Who Have Positive Results in North Las Vegas**

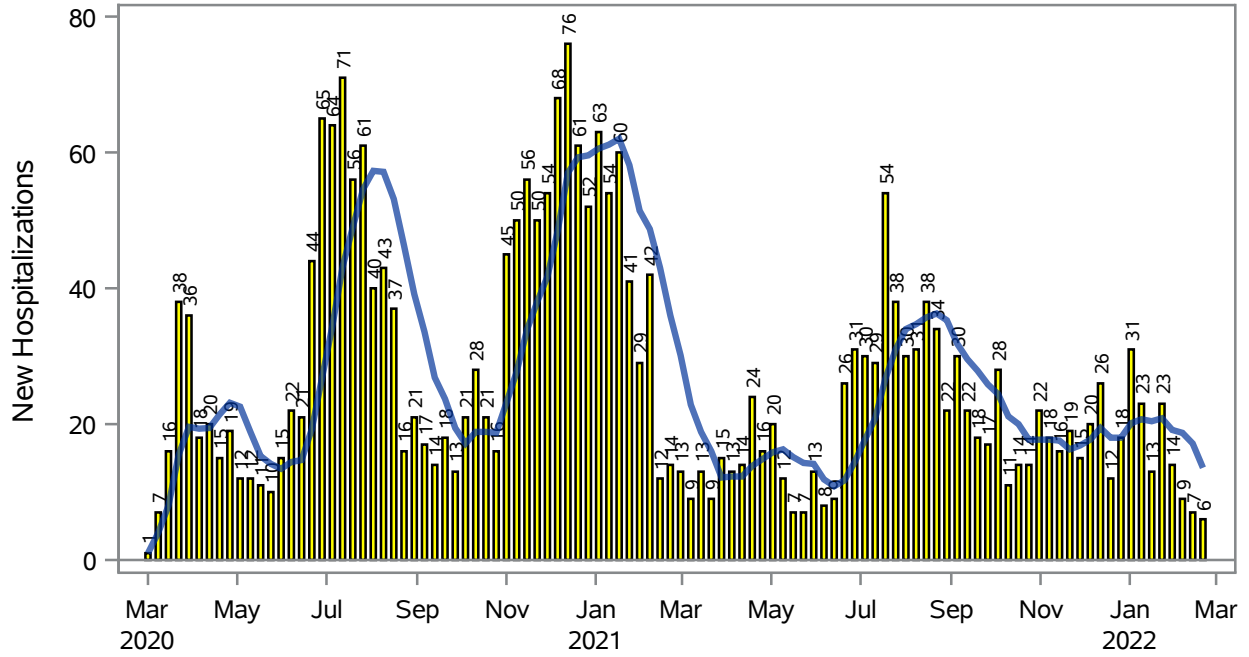
Collection Date	Positive	Negative	Equivocal	Total	% Positivity	7-Day Moving Average
14FEB2022	63	543	5	611	10.31	11.9
15FEB2022	63	687	2	752	8.38	11.5
16FEB2022	64	634	6	704	9.09	11.0
17FEB2022	60	578		638	9.40	10.9
18FEB2022	32	414		446	7.17	9.92
19FEB2022	17	217		234	7.26	9.30
20FEB2022	25	159		184	13.59	9.32
21FEB2022	35	320	1	356	9.83	9.25
22FEB2022	41	703	4	748	5.48	8.83
23FEB2022	43	598	2	643	6.69	8.49
24FEB2022	29	471	2	502	5.78	7.97
25FEB2022	31	352		383	8.09	8.10
26FEB2022	15	161		176	8.52	8.28
27FEB2022	6	192	1	199	3.02	6.77
28FEB2022	25	572	3	600	4.17	5.96

Note: Testing Data includes a 3 day delay

**Investigations are ongoing; data are subject to change.  
Reporting through 02MAR2022**

**North Las Vegas zip codes include 89030, 89031, 89032, 89033, 89036, 89081, 89084, 89085, 89086, 89087.**

### COVID19 Hospitalizations for North Las Vegas, 7-Day Moving Average



■ New Hospitalizations   
 — 7-Day Moving Average

Investigations are ongoing; data are subject to change.

Reporting through 02MAR2022

North Las Vegas zip codes include 89030, 89031, 89032, 89033, 89036, 89081, 89084, 89085, 89086, 89087.

**Table 3: New COVID19-Related Hospitalizations and 7-Day Moving Average in North Las Vegas, previous month**

Week	Hospitalizations	7-Day Moving Average
06FEB2022	9	18.7
13FEB2022	7	17.1
20FEB2022	6	13.6

---

Note1: Admission Date is calculated as follows based on completed information:  
A) COVID19 Case is hospitalized B) COVID19 Case has a hospital admission date.

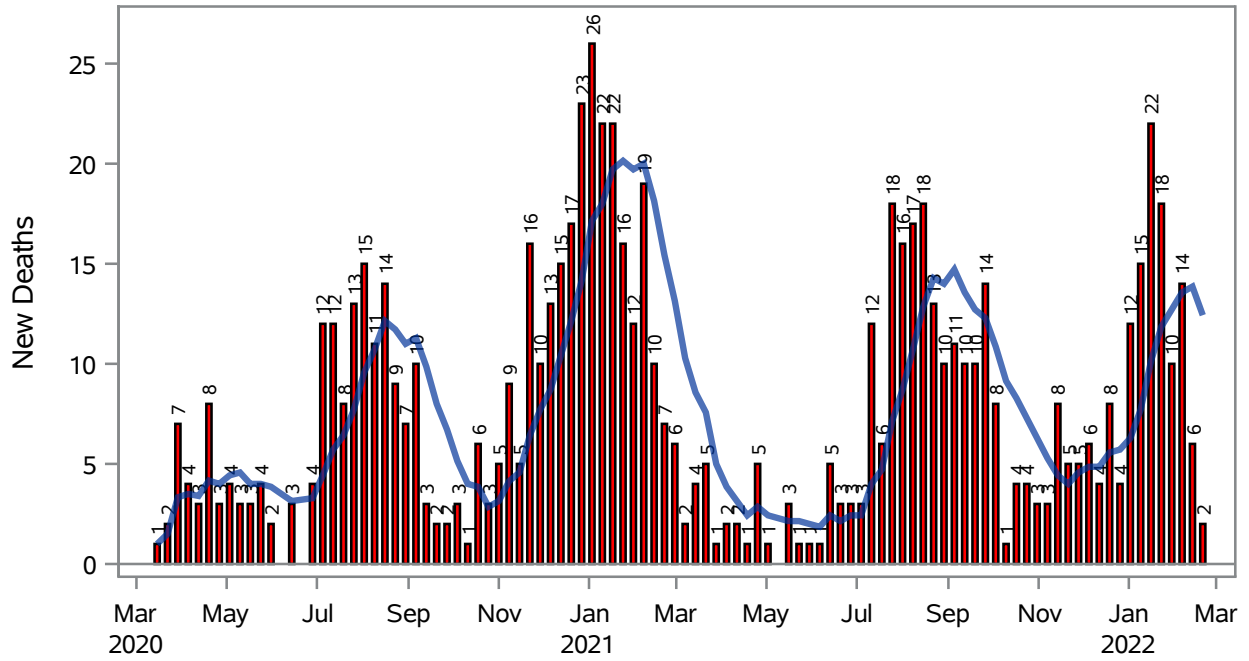
If admission date is missing, then the following is substituted temporarily, in order:  
1) Disease onset date 2) Disease diagnosis date 3) Lab result collection date 4) Report date to SNHD.

---

**Investigations are ongoing; data are subject to change.  
Reporting through 02MAR2022**

**North Las Vegas zip codes include 89030, 89031, 89032, 89033, 89036, 89081, 89084, 89085, 89086, 89087.**

### COVID19 Deaths for North Las Vegas, 7-Day Moving Average



■ New Deaths    
 — 7-Day Moving Average

Investigations are ongoing; data are subject to change.

Reporting through 02MAR2022

North Las Vegas zip codes include 89030, 89031, 89032, 89033, 89036, 89081, 89084, 89085, 89086, 89087.

**Table 4: New COVID19-Related Deaths and 7-Day Moving Average in North Las Vegas, Previous Month**

Week	Deaths	7-Day Moving Average
06FEB2022	14	13.6
13FEB2022	6	13.9
20FEB2022	2	12.4

---

Note1: Date of Death is calculated as follows based on completed information:  
A) COVID19 Case is reported as deceased B) COVID19 Case has a reported date of death.

If date of death is missing, then the following is substituted temporarily, in order:  
1) Disease onset date 2) Disease diagnosis date  
3) Lab result collection date 4) Report date to SNHD.

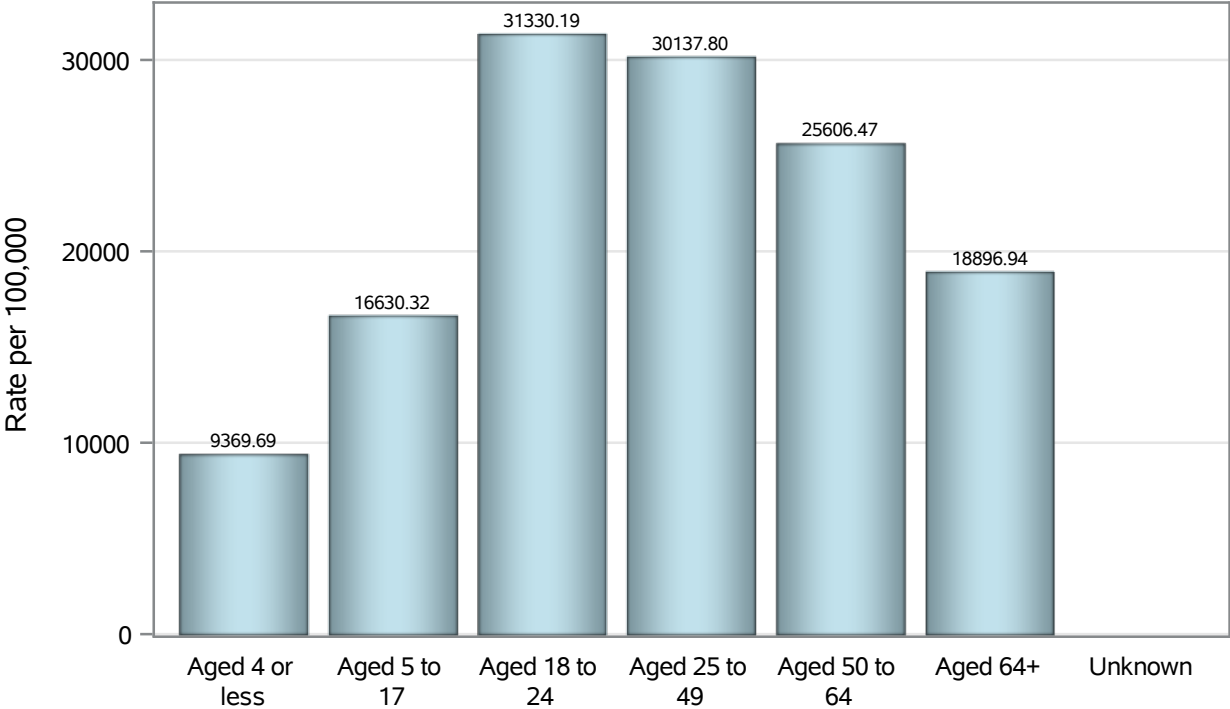
---

**Investigations are ongoing; data are subject to change.  
Reporting through 02MAR2022**

**North Las Vegas zip codes include 89030, 89031, 89032, 89033, 89036, 89081, 89084, 89085, 89086, 89087.**



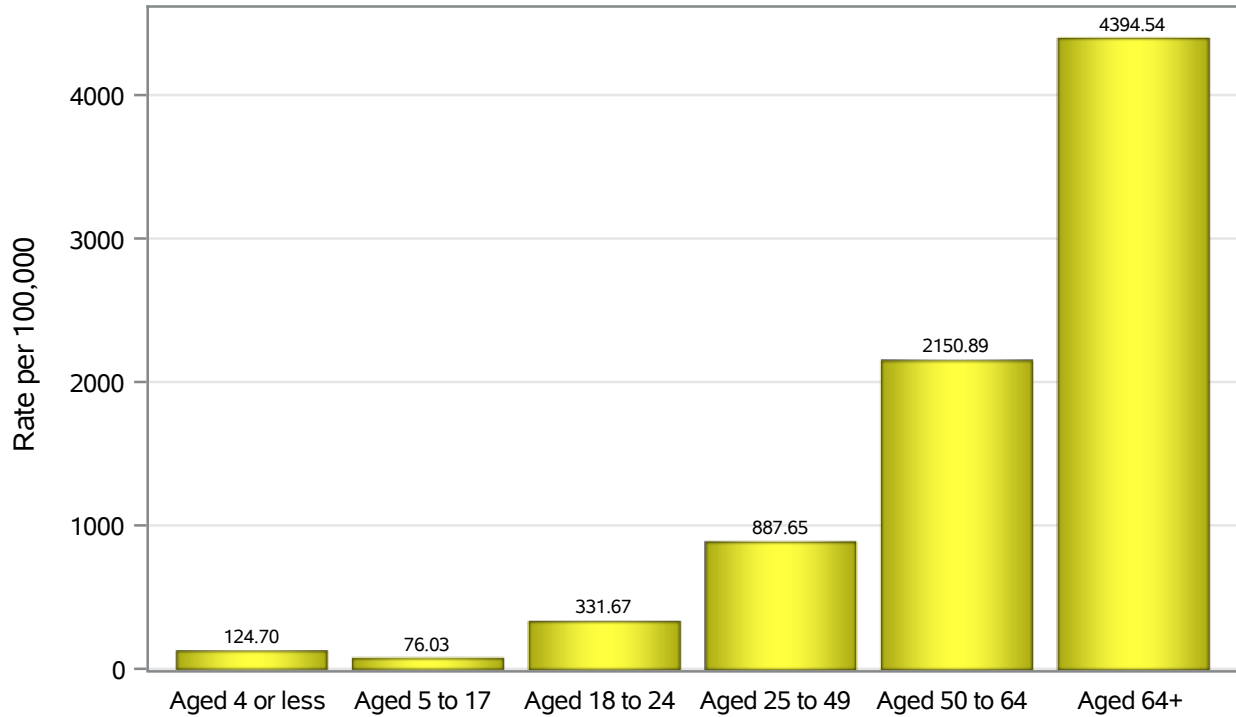
### Case Age Rates in North Las Vegas



Investigations are ongoing; data are subject to change.  
Reporting through 02MAR2022

North Las Vegas zip codes include 89030, 89031, 89032, 89033, 89036, 89081, 89084, 89085, 89086, 89087.

### Hospitalization Age Rates in North Las Vegas

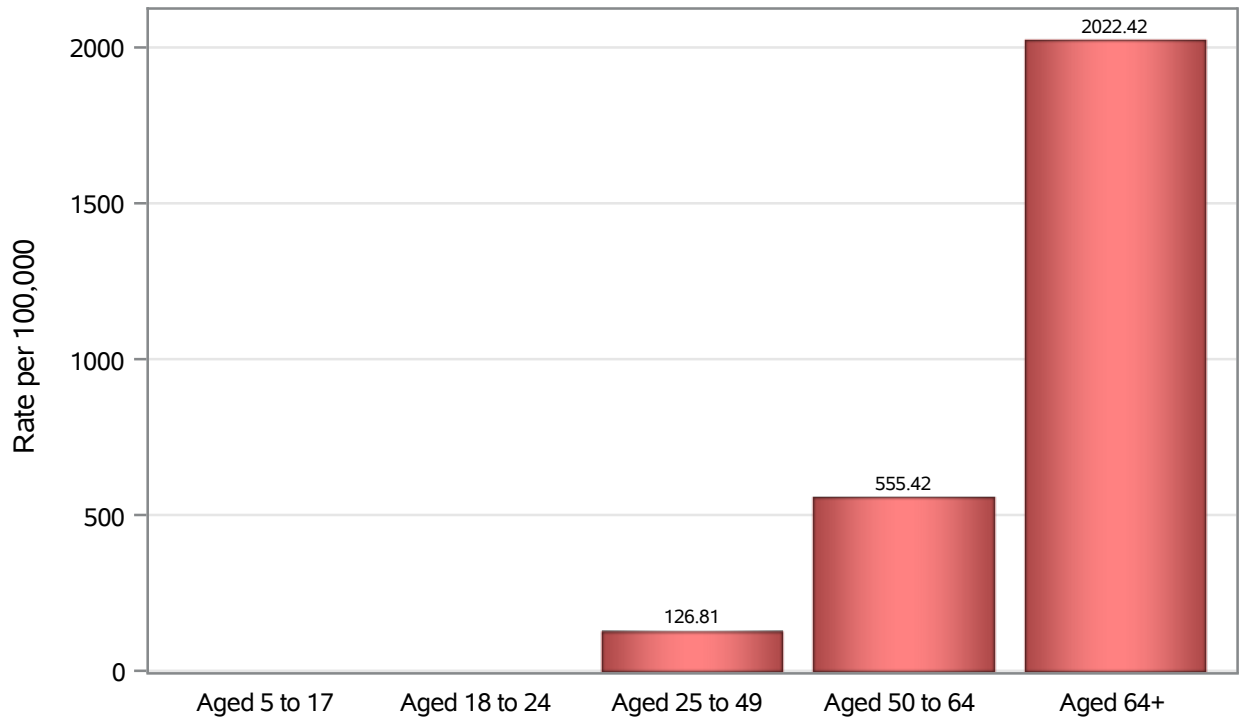


Investigations are ongoing; data are subject to change.

Reporting through 02MAR2022

North Las Vegas zip codes include 89030, 89031, 89032, 89033, 89036, 89081, 89084, 89085, 89086, 89087.

### Death Age Rates in North Las Vegas



Investigations are ongoing; data are subject to change.

Reporting through 02MAR2022

North Las Vegas zip codes include 89030, 89031, 89032, 89033, 89036, 89081, 89084, 89085, 89086, 89087.

**Table 5: Age and COVID19 in North Las Vegas**

Case Status	Age Categories	N	%	Population	Rate per 100,000
Cases	Aged 4 or less	1653	3.0	17,642	9369.7
	Aged 5 to 17	8312	14.8	49,981	16630
	Aged 18 to 24	7179	12.8	22,914	31330
	Aged 25 to 49	24955	44.6	82,803	30138
	Aged 50 to 64	9405	16.8	36,729	25606
	Aged 64+	4485	8.0	23,734	18897
	Unknown	7	0.0	.	.
Hospitalizations	Aged 4 or less	22	0.8	17,642	124.70
	Aged 5 to 17	38	1.4	49,981	76.03
	Aged 18 to 24	76	2.8	22,914	331.67
	Aged 25 to 49	735	27.2	82,803	887.65
	Aged 50 to 64	790	29.2	36,729	2150.9
	Aged 64+	1043	38.6	23,734	4394.5
	Deaths	Aged 5 to 17	1	0.1	49,981
Aged 18 to 24		2	0.3	22,914	.
Aged 25 to 49		105	13.3	82,803	126.81
Aged 50 to 64		204	25.8	36,729	555.42
Aged 64+		480	60.6	23,734	2022.4

Note1: Population data source for calculating rate estimates: U.S. Census Bureau, ACS 5-year estimate.

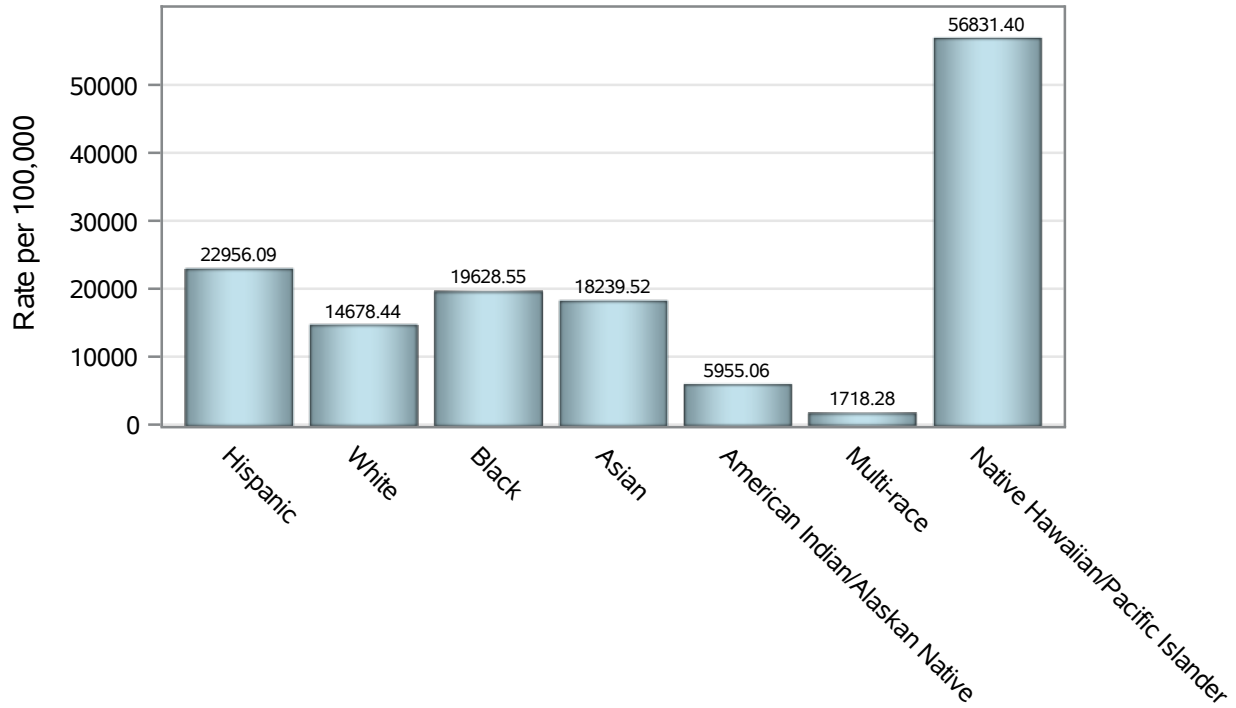
Note2: Rates for categories with fewer than 12 cases are suppressed due to high relative standard error.

Note3: Hospitalizations are regardless of deceased status; Deaths are regardless of hospitalization status

**Investigations are ongoing; data are subject to change.  
Reporting through 02MAR2022**

**North Las Vegas zip codes include 89030, 89031, 89032, 89033, 89036, 89081, 89084, 89085, 89086, 89087.**

### Case Race/Ethnicity Rates in North Las Vegas

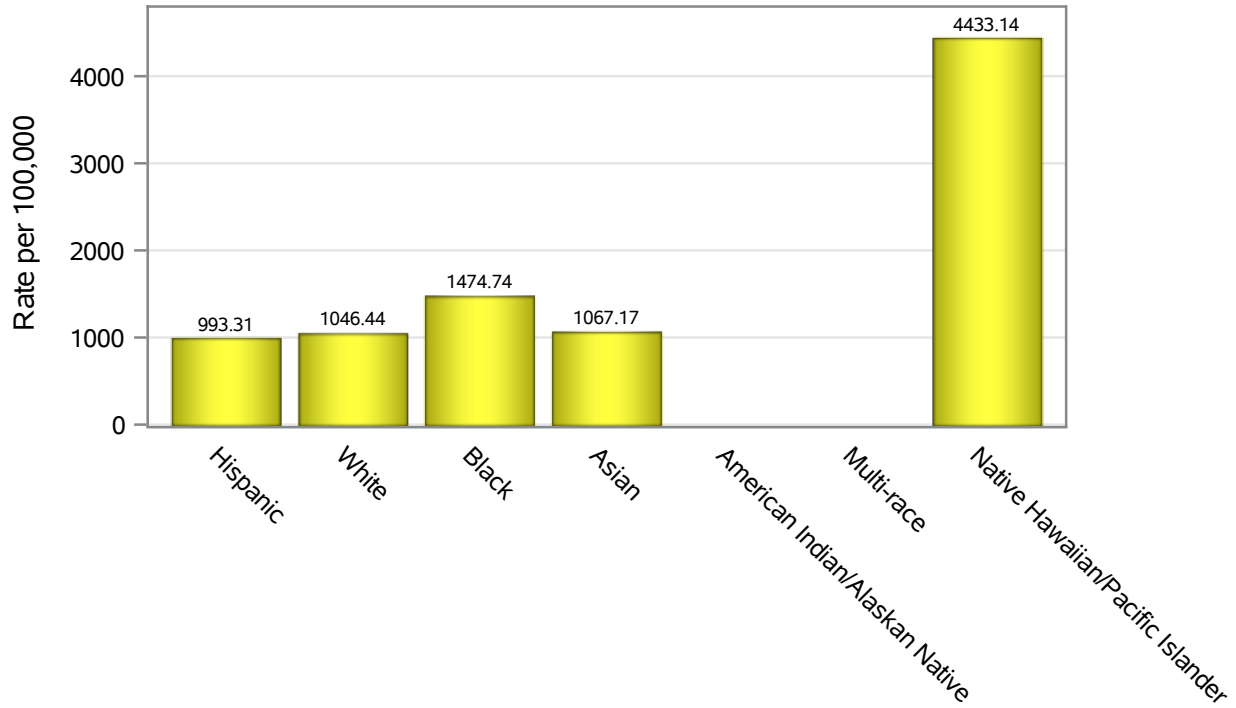


Investigations are ongoing; data are subject to change.

Reporting through 02MAR2022

North Las Vegas zip codes include 89030, 89031, 89032, 89033, 89036, 89081, 89084, 89085, 89086, 89087.

### Hospitalization Race/Ethnicity Rates in North Las Vegas

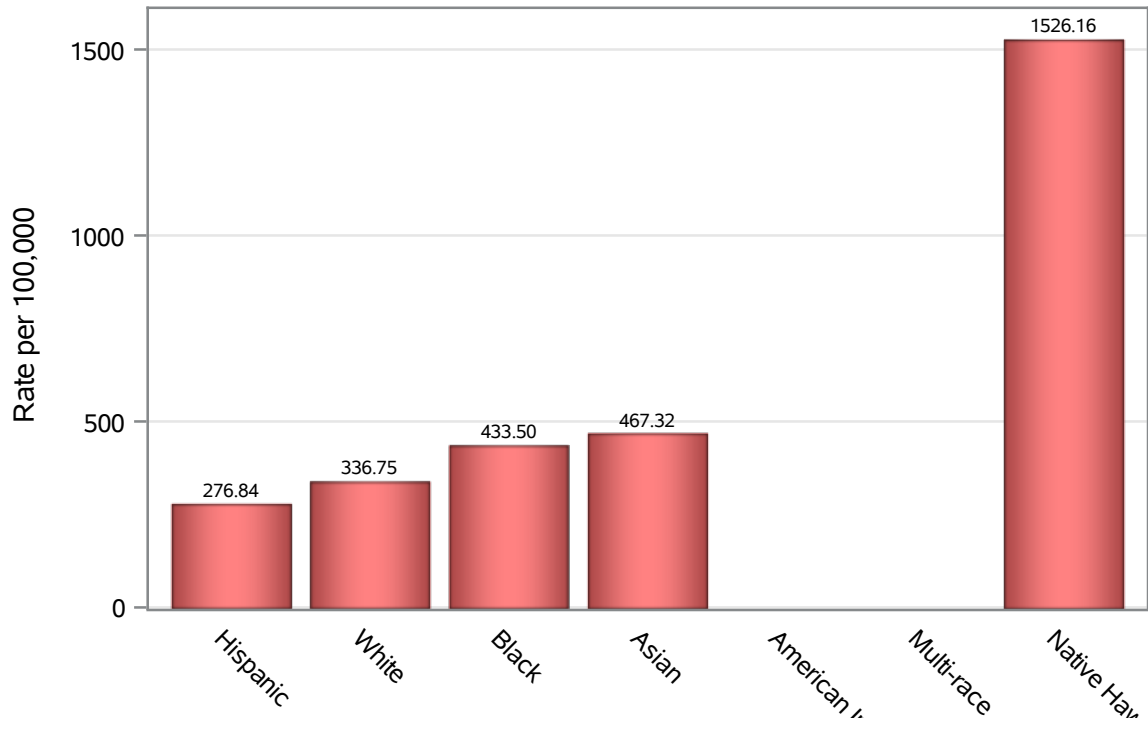


Investigations are ongoing; data are subject to change.

Reporting through 02MAR2022

North Las Vegas zip codes include 89030, 89031, 89032, 89033, 89036, 89081, 89084, 89085, 89086, 89087.

### Death Race/Ethnicity Rates in North Las Vegas



Investigations are ongoing; data are subject to change.

Reporting through 02MAR2022

North Las Vegas zip codes include 89030, 89031, 89032, 89033, 89036, 89081, 89084, 89085, 89086, 89087.

**Table 6: Race/Ethnicity and COVID19 in North Las Vegas**

Case Status	Race Ethnicity Categories	N	%	Population	Rate per 100,000
Cases	Hispanic	22140	39.5	96,445	22956
	White	9328	16.7	63,549	14678
	Black	9237	16.5	47,059	19629
	Asian	2615	4.7	14,337	18240
	American Indian/Alaskan Native	53	0.1	890	5955.1
	Multi-race	167	0.3	9,719	1718.3
	Native Hawaiian/Pacific Islander	782	1.4	1,376	56831
	Unknown	11674	20.8	.	.
Hospitalizations	Hispanic	958	35.4	96,445	993.31
	White	665	24.6	63,549	1046.4
	Black	694	25.7	47,059	1474.7
	Asian	153	5.7	14,337	1067.2
	American Indian/Alaskan Native	11	0.4	890	.
	Multi-race	11	0.4	9,719	.
	Native Hawaiian/Pacific Islander	61	2.3	1,376	4433.1
	Unknown	151	5.6	.	.
Deaths	Hispanic	267	33.7	96,445	276.84
	White	214	27.0	63,549	336.75
	Black	204	25.8	47,059	433.50
	Asian	67	8.5	14,337	467.32
	American Indian/Alaskan Native	6	0.8	890	.
	Multi-race	7	0.9	9,719	.
	Native Hawaiian/Pacific Islander	21	2.7	1,376	1526.2
	Unknown	6	0.8	.	.

Note1: Population data source for calculating rate estimates: U.S. Census Bureau, ACS 5-year estimate.

Note2: Rates for categories with fewer than 12 cases are suppressed due to high relative standard error.

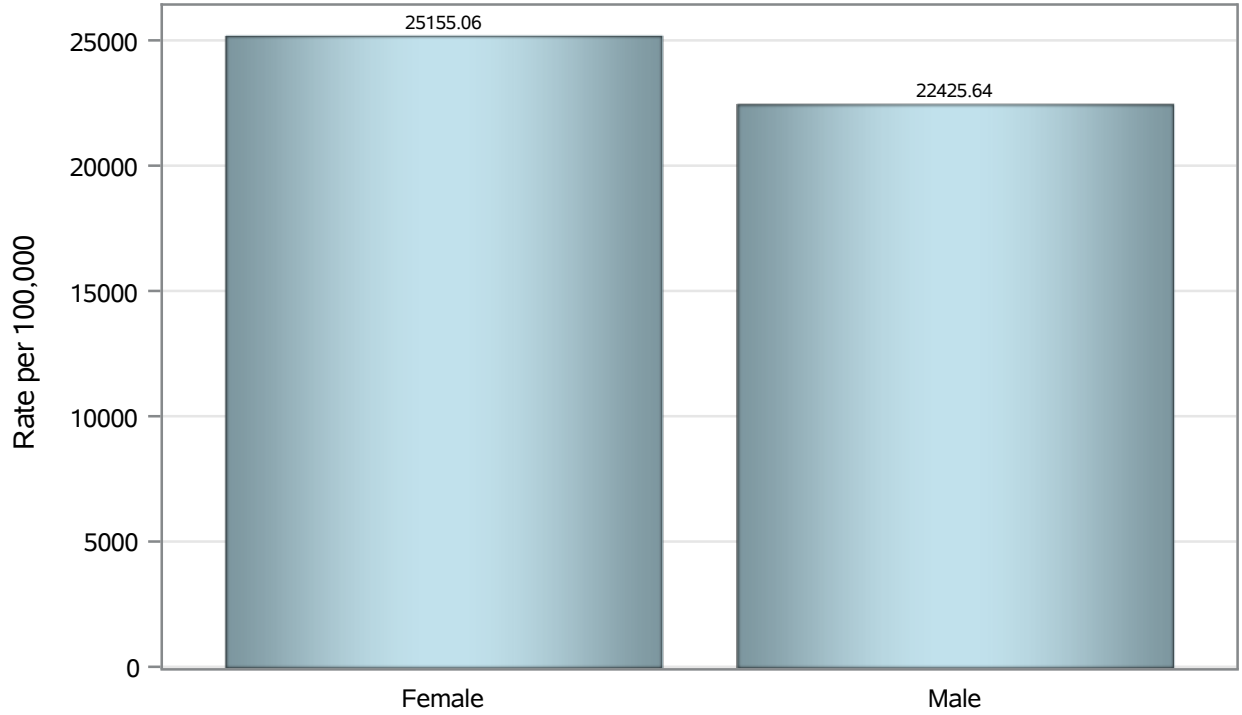
Note3: Hospitalizations are regardless of deceased status; Deaths are regardless of hospitalization status

**Investigations are ongoing; data are subject to change.  
Reporting through 02MAR2022**

**North Las Vegas zip codes include 89030, 89031, 89032, 89033, 89036, 89081, 89084, 89085, 89086, 89087.**



### Case Birth Sex Rates in North Las Vegas

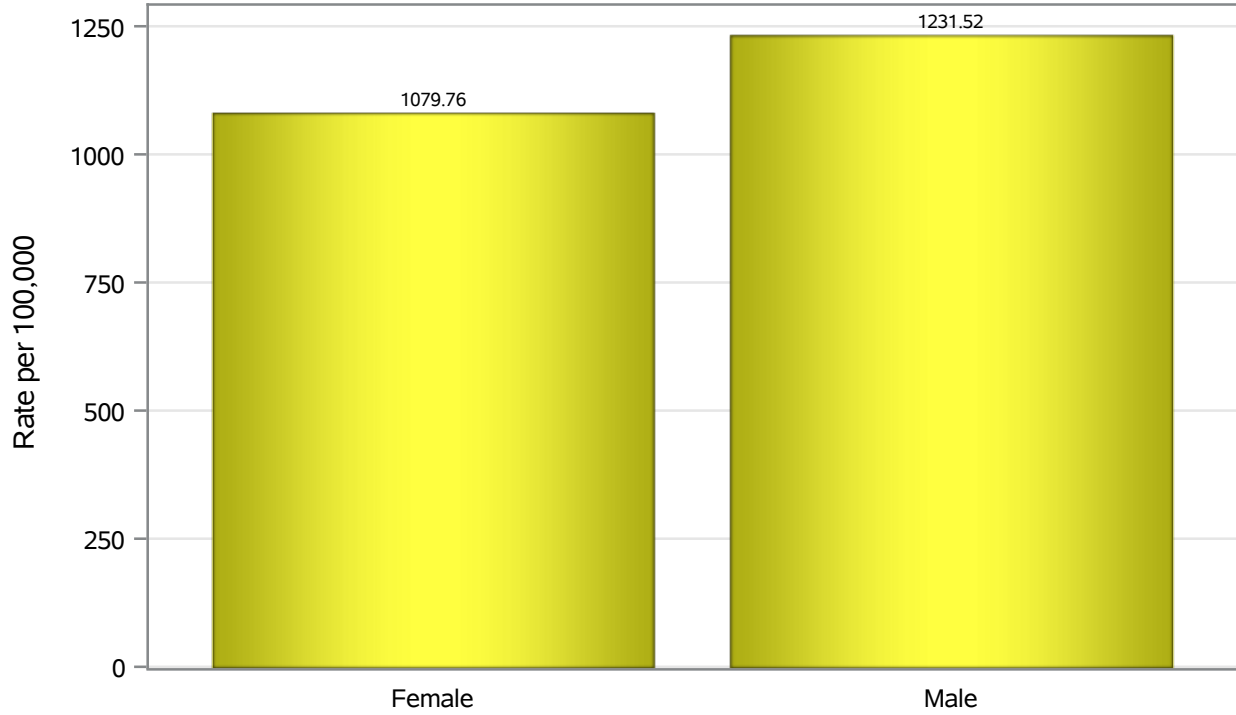


Investigations are ongoing; data are subject to change.

Reporting through 02MAR2022

North Las Vegas zip codes include 89030, 89031, 89032, 89033, 89036, 89081, 89084, 89085, 89086, 89087.

### Hospitalization Birth Sex Rates in North Las Vegas

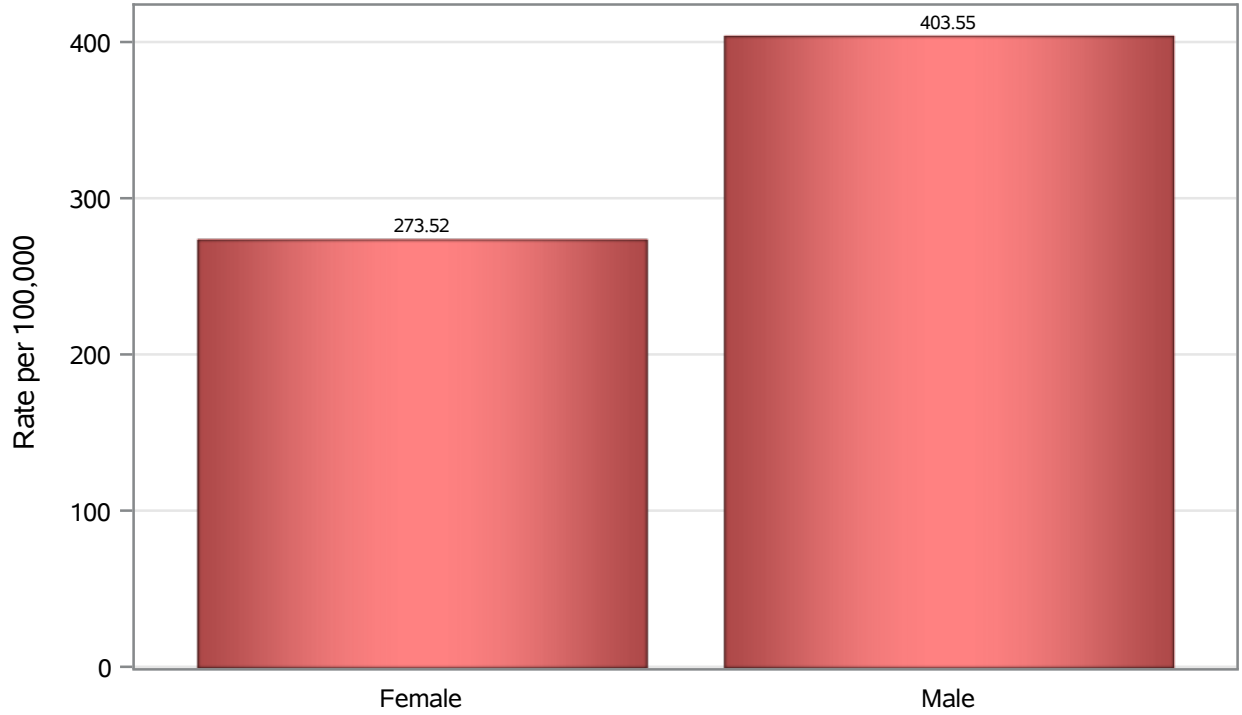


Investigations are ongoing; data are subject to change.

Reporting through 02MAR2022

North Las Vegas zip codes include 89030, 89031, 89032, 89033, 89036, 89081, 89084, 89085, 89086, 89087.

### Death Birth Sex Rates in North Las Vegas



Investigations are ongoing; data are subject to change.

Reporting through 02MAR2022

North Las Vegas zip codes include 89030, 89031, 89032, 89033, 89036, 89081, 89084, 89085, 89086, 89087.

**Table 7: Birth Sex and COVID19 in North Las Vegas**

Case Status	Birth Sex Categories	N	%	Population	Rate per 100,000
Cases	Female	29890	53.4	118823	25155
	Male	25785	46.0	114980	22426
	Unknown	321	0.6	.	.
Hospitalizations	Female	1283	47.4	118823	1079.8
	Male	1416	52.4	114980	1231.5
	Unknown	5	0.2	.	.
Deaths	Female	325	41.0	118823	273.52
	Male	464	58.6	114980	403.55
	Unknown	3	0.4	.	.

Note1: Population data source for calculating rate estimates: U.S. Census Bureau, ACS 5-year estimate.

Note2: Rates for categories with fewer than 12 cases are suppressed due to high relative standard error.

Note3: Hospitalizations are regardless of deceased status; Deaths are regardless of hospitalization status

**Investigations are ongoing; data are subject to change.  
Reporting through 02MAR2022**

**North Las Vegas zip codes include 89030, 89031, 89032, 89033, 89036, 89081, 89084, 89085, 89086, 89087.**