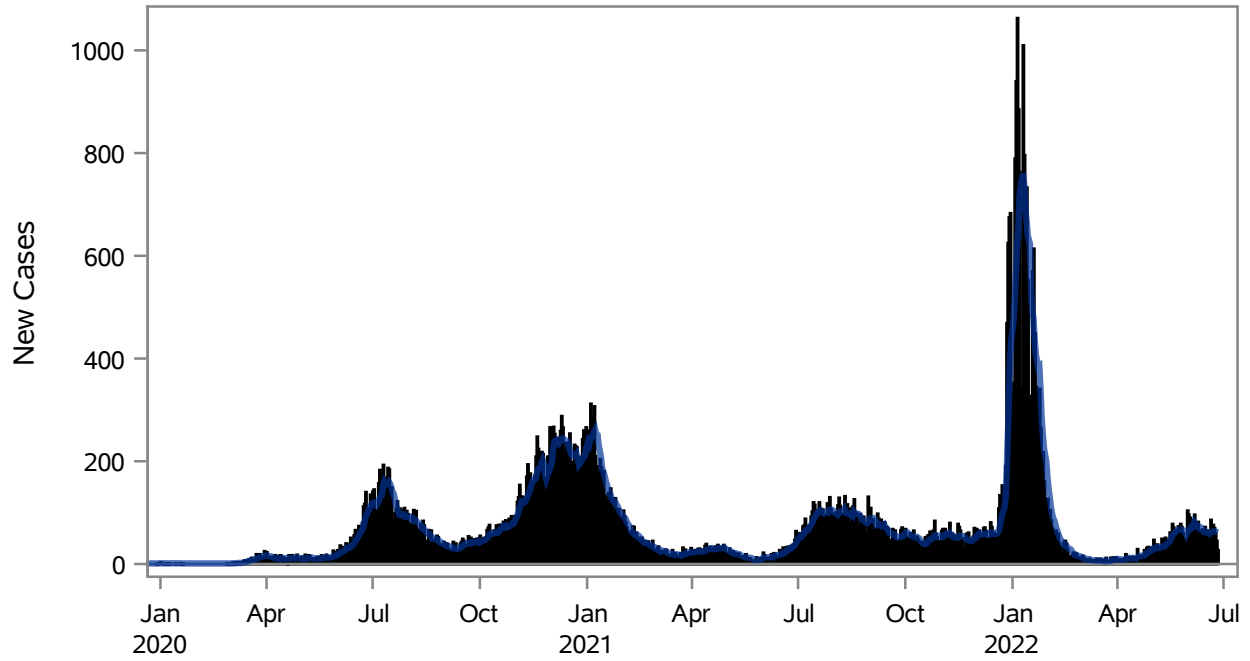


COVID19 Cases for North Las Vegas, 7-Day Moving Average



■ New Cases — 7-Day Moving Average

Investigations are ongoing; data are subject to change.

Reporting through 27JUN2022

North Las Vegas zip codes include 89030, 89031, 89032, 89033, 89036, 89081, 89084, 89085, 89086, 89087.

Table 1: New COVID19 Cases and 7-Day Moving Average in North Las Vegas, Previous Two Weeks

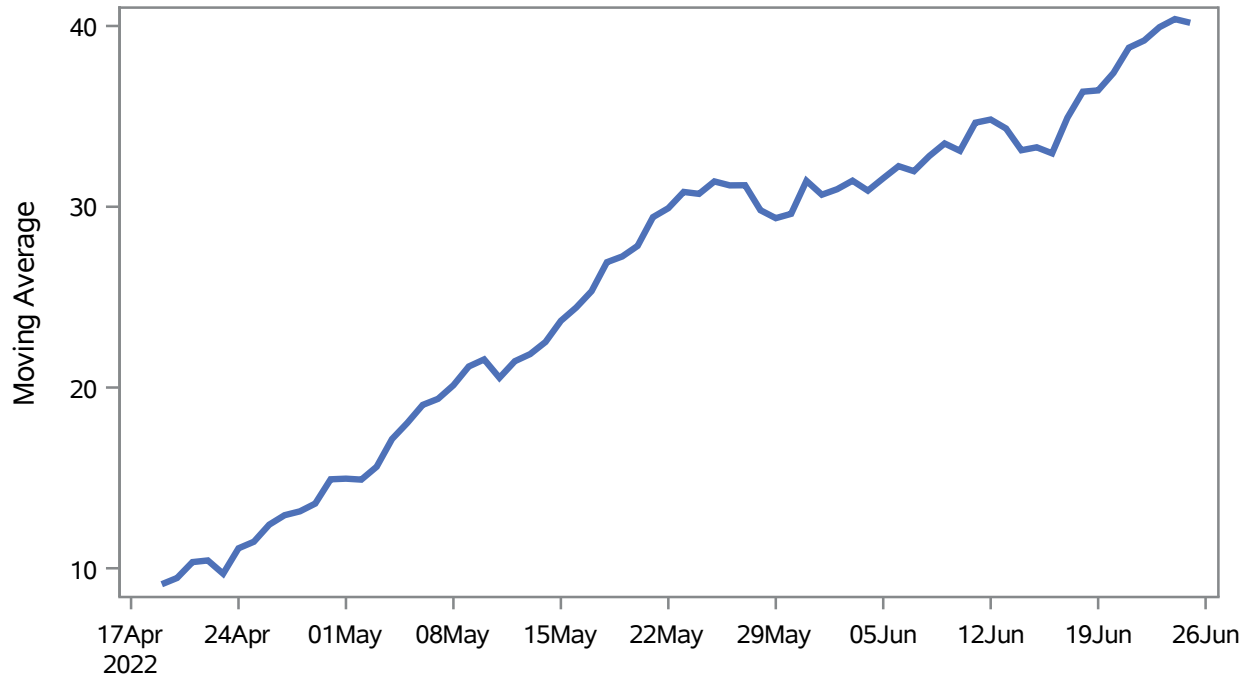
Date (Daily)	New Cases	7-Day Moving Average
14JUN2022	57	63.00
15JUN2022	72	63.71
16JUN2022	65	61.29
17JUN2022	65	61.29
18JUN2022	51	60.43
19JUN2022	35	58.86
20JUN2022	86	61.57
21JUN2022	65	62.71
22JUN2022	76	63.29
23JUN2022	70	64.00
24JUN2022	60	63.29
25JUN2022	45	62.43

Note1: Event Date is calculated as follows based on completed information:
1) Disease onset date 2) Disease diagnosis date 3) Lab result collection date 4) Report date to SNHD.

**Investigations are ongoing; data are subject to change.
Reporting through 27JUN2022**

North Las Vegas zip codes include 89030, 89031, 89032, 89033, 89036, 89081, 89084, 89085, 89086, 89087.

Percent of People Receiving COVID-19 Viral Tests Who Have Positive Results in North Las Vegas



Investigations are ongoing; data are subject to change.

Reporting through 27JUN2022

North Las Vegas zip codes include 89030, 89031, 89032, 89033, 89036, 89081, 89084, 89085, 89086, 89087.

Table 2: Percent of People Receiving COVID-19 Viral Tests Who Have Positive Results in North Las Vegas

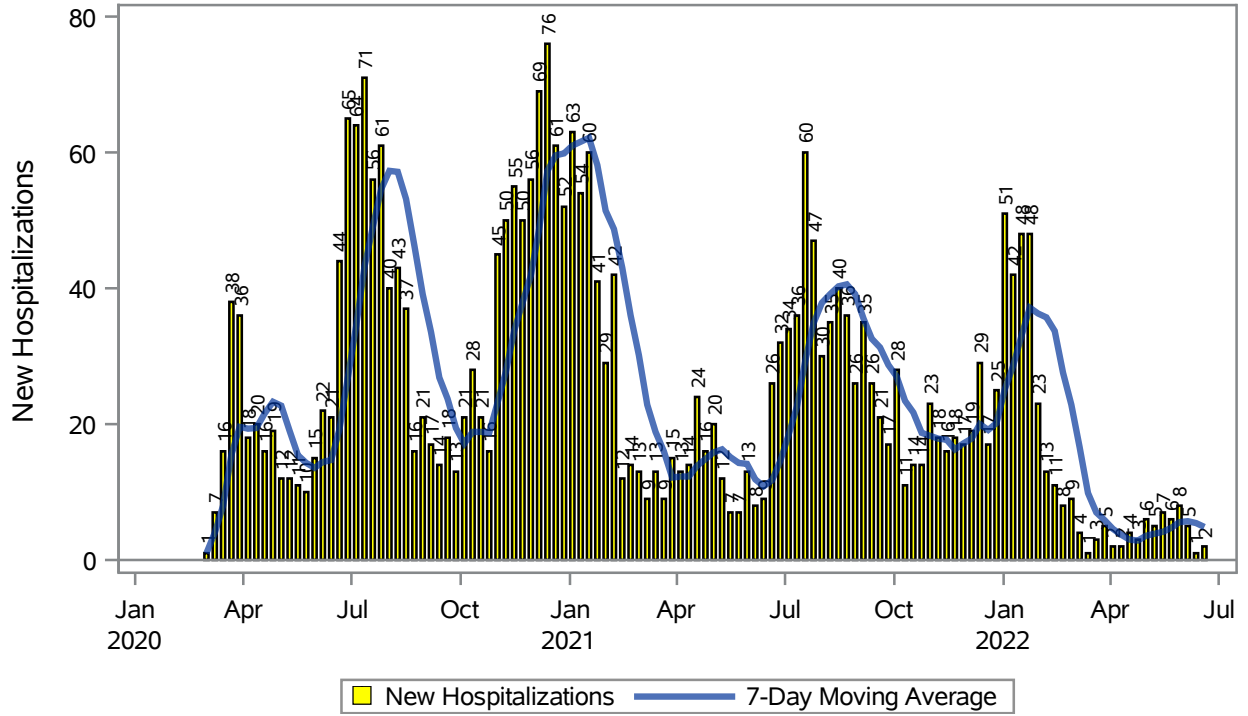
Collection Date	Positive	Negative	Equivocal	Total	% Positivity	7-Day Moving Average
11JUN2022	73	144		217	33.64	34.6
12JUN2022	68	109		177	38.42	34.8
13JUN2022	104	185	3	292	35.62	34.3
14JUN2022	93	245	1	339	27.43	33.1
15JUN2022	100	189	2	291	34.36	33.3
16JUN2022	108	221	1	330	32.73	33.0
17JUN2022	104	141	1	246	42.28	34.9
18JUN2022	80	103		183	43.72	36.4
19JUN2022	65	102		167	38.92	36.4
20JUN2022	136	185		321	42.37	37.4
21JUN2022	115	193	1	309	37.22	38.8
22JUN2022	107	181		288	37.15	39.2
23JUN2022	105	171	1	277	37.91	39.9
24JUN2022	118	142		260	45.38	40.4
25JUN2022	74	101		175	42.29	40.2

Note: Testing Data includes a 3 day delay

**Investigations are ongoing; data are subject to change.
Reporting through 27JUN2022**

North Las Vegas zip codes include 89030, 89031, 89032, 89033, 89036, 89081, 89084, 89085, 89086, 89087.

COVID19 Hospitalizations for North Las Vegas, 7-Day Moving Average



Investigations are ongoing; data are subject to change.

Reporting through 27 JUN 2022

North Las Vegas zip codes include 89030, 89031, 89032, 89033, 89036, 89081, 89084, 89085, 89086, 89087.

Table 3: New COVID19-Related Hospitalizations and 7-Day Moving Average in North Las Vegas, previous month

Week	Hospitalizations	7-Day Moving Average
29MAY2022	8	5.57
05JUN2022	5	5.71
12JUN2022	1	5.43
19JUN2022	2	4.86

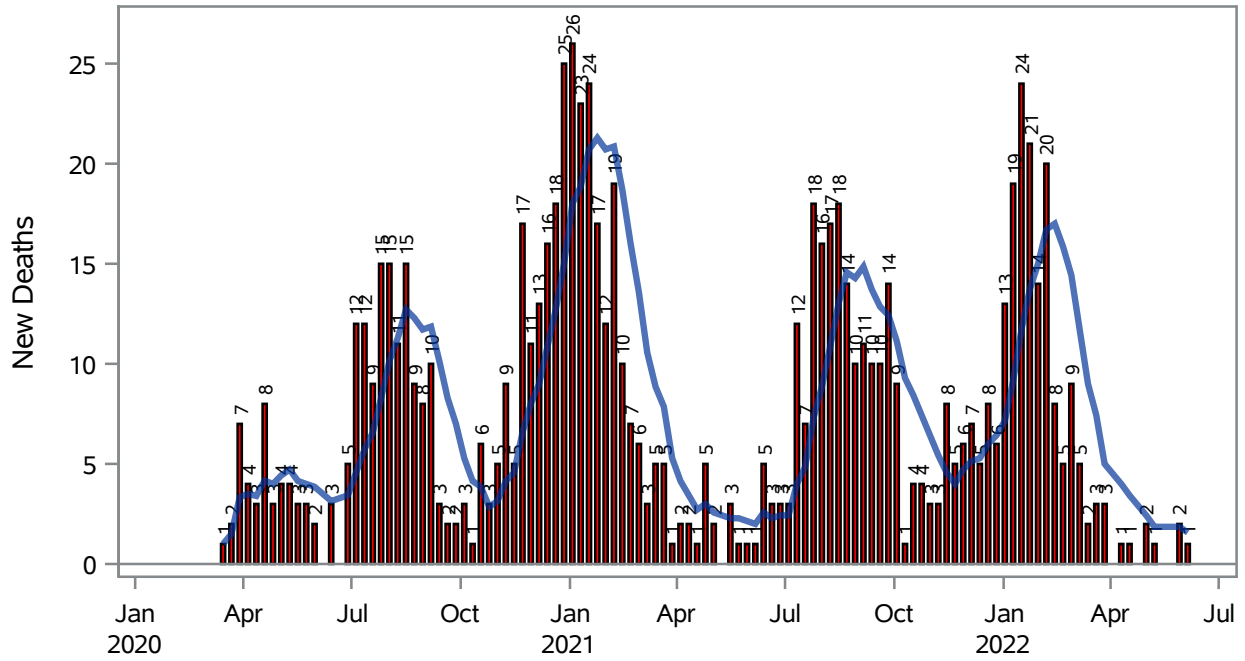
Note1: Admission Date is calculated as follows based on completed information:
A) COVID19 Case is hospitalized B) COVID19 Case has a hospital admission date.

If admission date is missing, then the following is substituted temporarily, in order:
1) Disease onset date 2) Disease diagnosis date 3) Lab result collection date 4) Report date to SNHD.

**Investigations are ongoing; data are subject to change.
Reporting through 27JUN2022**

North Las Vegas zip codes include 89030, 89031, 89032, 89033, 89036, 89081, 89084, 89085, 89086, 89087.

COVID19 Deaths for North Las Vegas, 7-Day Moving Average



■ New Deaths — 7-Day Moving Average

Investigations are ongoing; data are subject to change.

Reporting through 27 JUN 2022

North Las Vegas zip codes include 89030, 89031, 89032, 89033, 89036, 89081, 89084, 89085, 89086, 89087.

Table 4: New COVID19-Related Deaths and 7-Day Moving Average in North Las Vegas, Previous Month

Week	Deaths	7-Day Moving Average
29MAY2022	2	1.86
05JUN2022	1	1.57

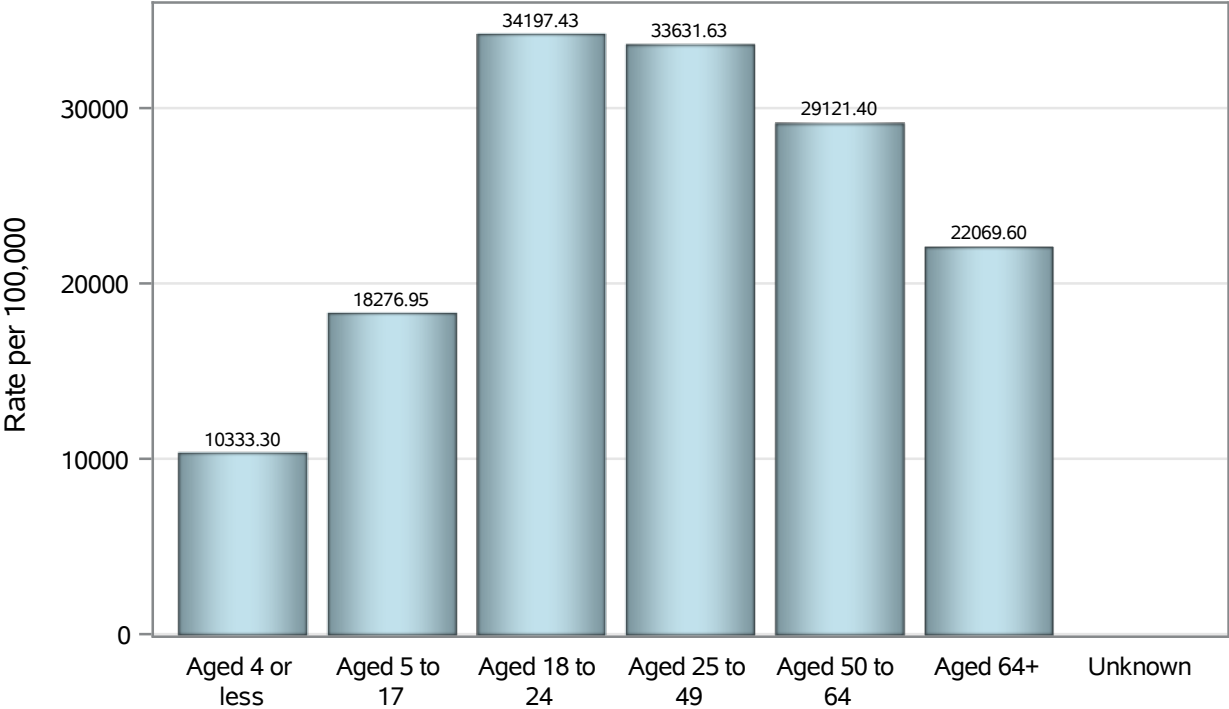
Note1: Date of Death is calculated as follows based on completed information:
A) COVID19 Case is reported as deceased B) COVID19 Case has a reported date of death.

If date of death is missing, then the following is substituted temporarily, in order:
1) Disease onset date 2) Disease diagnosis date
3) Lab result collection date 4) Report date to SNHD.

**Investigations are ongoing; data are subject to change.
Reporting through 27JUN2022**

North Las Vegas zip codes include 89030, 89031, 89032, 89033, 89036, 89081, 89084, 89085, 89086, 89087.

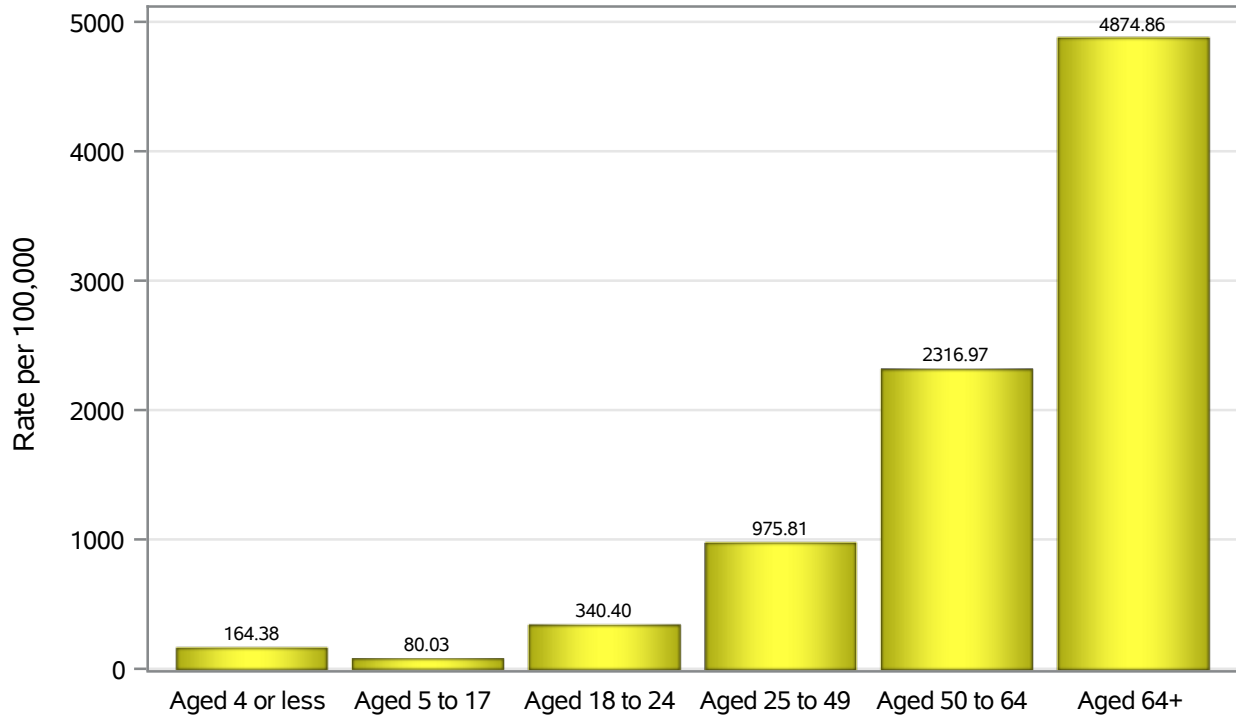
Case Age Rates in North Las Vegas



Investigations are ongoing; data are subject to change.
Reporting through 27JUN2022

North Las Vegas zip codes include 89030, 89031, 89032, 89033, 89036, 89081, 89084, 89085, 89086, 89087.

Hospitalization Age Rates in North Las Vegas

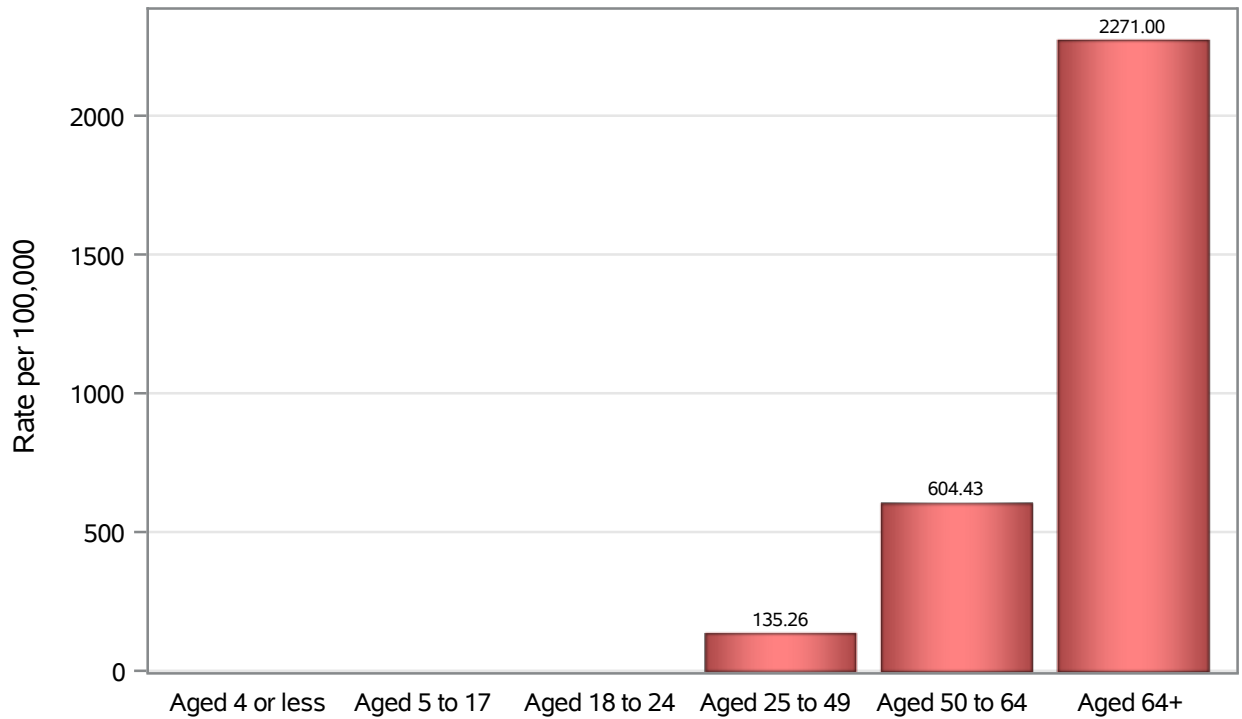


Investigations are ongoing; data are subject to change.

Reporting through 27JUN2022

North Las Vegas zip codes include 89030, 89031, 89032, 89033, 89036, 89081, 89084, 89085, 89086, 89087.

Death Age Rates in North Las Vegas



Investigations are ongoing; data are subject to change.

Reporting through 27JUN2022

North Las Vegas zip codes include 89030, 89031, 89032, 89033, 89036, 89081, 89084, 89085, 89086, 89087.

Table 5: Age and COVID19 in North Las Vegas

Case Status	Age Categories	N	%	Population	Rate per 100,000
Cases	Aged 4 or less	1823	2.9	17,642	10333
	Aged 5 to 17	9135	14.6	49,981	18277
	Aged 18 to 24	7836	12.5	22,914	34197
	Aged 25 to 49	27848	44.5	82,803	33632
	Aged 50 to 64	10696	17.1	36,729	29121
	Aged 64+	5238	8.4	23,734	22070
	Unknown	12	0.0	.	.
Hospitalizations	Aged 4 or less	29	1.0	17,642	164.38
	Aged 5 to 17	40	1.3	49,981	80.03
	Aged 18 to 24	78	2.6	22,914	340.40
	Aged 25 to 49	808	27.3	82,803	975.81
	Aged 50 to 64	851	28.7	36,729	2317.0
	Aged 64+	1157	39.0	23,734	4874.9
Deaths	Aged 4 or less	1	0.1	17,642	.
	Aged 5 to 17	1	0.1	49,981	.
	Aged 18 to 24	2	0.2	22,914	.
	Aged 25 to 49	112	12.8	82,803	135.26
	Aged 50 to 64	222	25.3	36,729	604.43
	Aged 64+	539	61.5	23,734	2271.0

Note1: Population data source for calculating rate estimates: U.S. Census Bureau, ACS 5-year estimate.

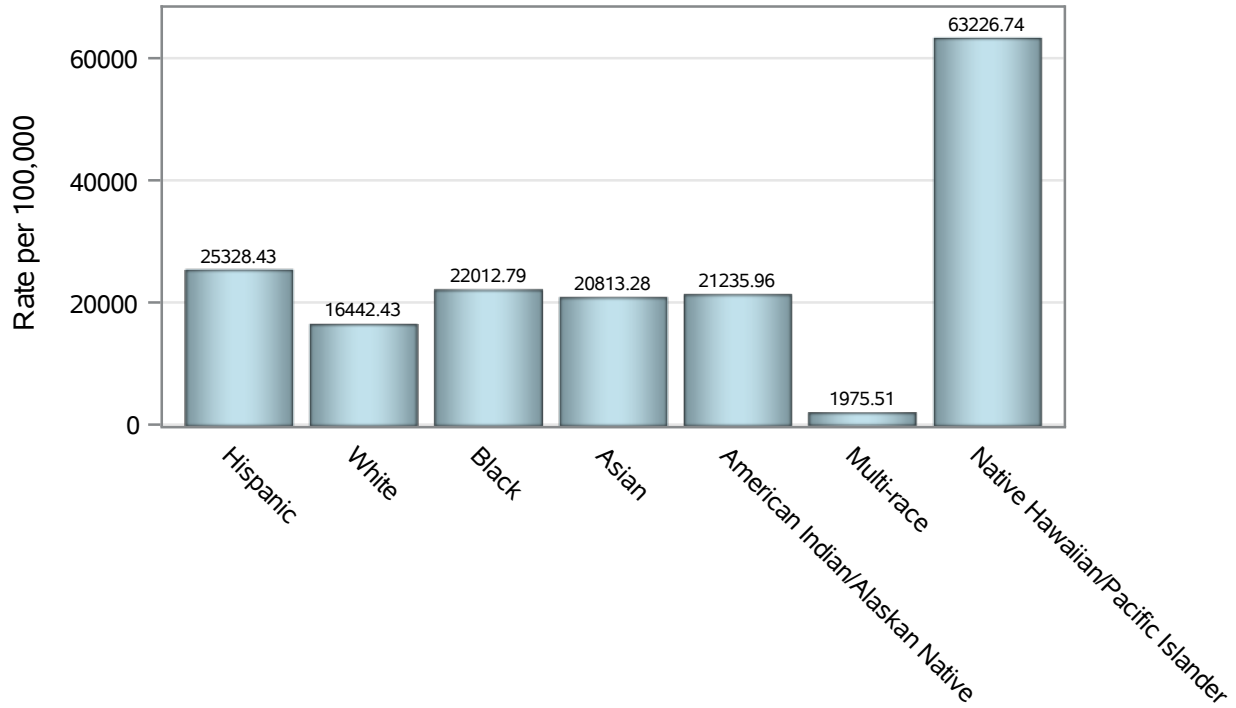
Note2: Rates for categories with fewer than 12 cases are suppressed due to high relative standard error.

Note3: Hospitalizations are regardless of deceased status; Deaths are regardless of hospitalization status

**Investigations are ongoing; data are subject to change.
Reporting through 27JUN2022**

North Las Vegas zip codes include 89030, 89031, 89032, 89033, 89036, 89081, 89084, 89085, 89086, 89087.

Case Race/Ethnicity Rates in North Las Vegas

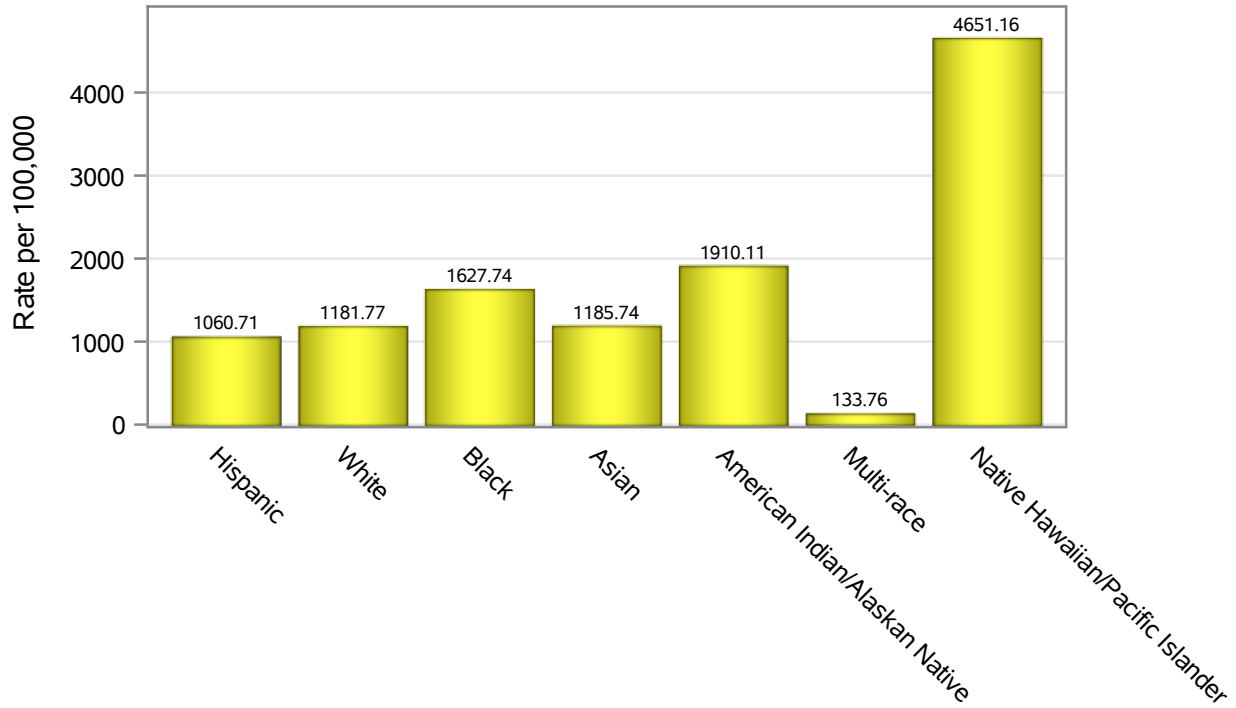


Investigations are ongoing; data are subject to change.

Reporting through 27JUN2022

North Las Vegas zip codes include 89030, 89031, 89032, 89033, 89036, 89081, 89084, 89085, 89086, 89087.

Hospitalization Race/Ethnicity Rates in North Las Vegas

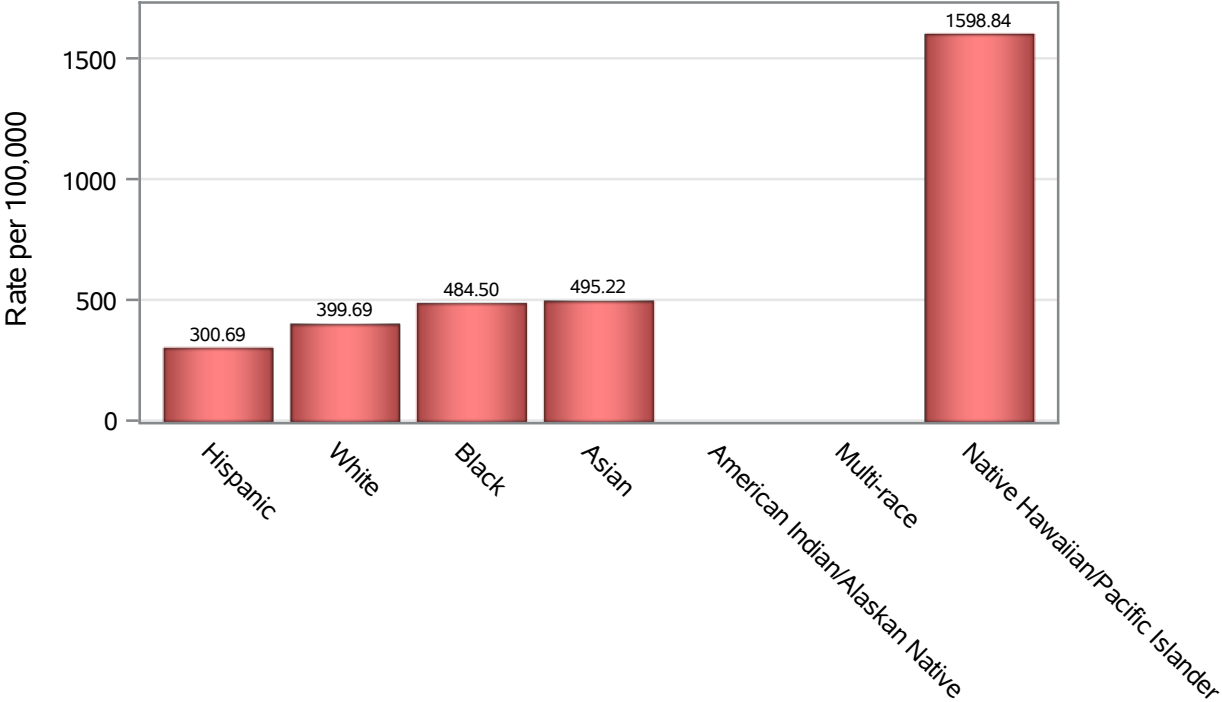


Investigations are ongoing; data are subject to change.

Reporting through 27JUN2022

North Las Vegas zip codes include 89030, 89031, 89032, 89033, 89036, 89081, 89084, 89085, 89086, 89087.

Death Race/Ethnicity Rates in North Las Vegas



Investigations are ongoing; data are subject to change.

Reporting through 27JUN2022

North Las Vegas zip codes include 89030, 89031, 89032, 89033, 89036, 89081, 89084, 89085, 89086, 89087.

Table 6: Race/Ethnicity and COVID19 in North Las Vegas

Case Status	Race Ethnicity Categories	N	%	Population	Rate per 100,000
Cases	Hispanic	24428	39.0	96,445	25328
	White	10449	16.7	63,549	16442
	Black	10359	16.6	47,059	22013
	Asian	2984	4.8	14,337	20813
	American Indian/Alaskan Native	189	0.3	890	21236
	Multi-race	192	0.3	9,719	1975.5
	Native Hawaiian/Pacific Islander	870	1.4	1,376	63227
	Unknown	13117	21.0	.	.
Hospitalizations	Hispanic	1023	34.5	96,445	1060.7
	White	751	25.3	63,549	1181.8
	Black	766	25.9	47,059	1627.7
	Asian	170	5.7	14,337	1185.7
	American Indian/Alaskan Native	17	0.6	890	1910.1
	Multi-race	13	0.4	9,719	133.76
	Native Hawaiian/Pacific Islander	64	2.2	1,376	4651.2
	Unknown	159	5.4	.	.
Deaths	Hispanic	290	33.1	96,445	300.69
	White	254	29.0	63,549	399.69
	Black	228	26.0	47,059	484.50
	Asian	71	8.1	14,337	495.22
	American Indian/Alaskan Native	6	0.7	890	.
	Multi-race	6	0.7	9,719	.
	Native Hawaiian/Pacific Islander	22	2.5	1,376	1598.8

Note1: Population data source for calculating rate estimates: U.S. Census Bureau, ACS 5-year estimate.

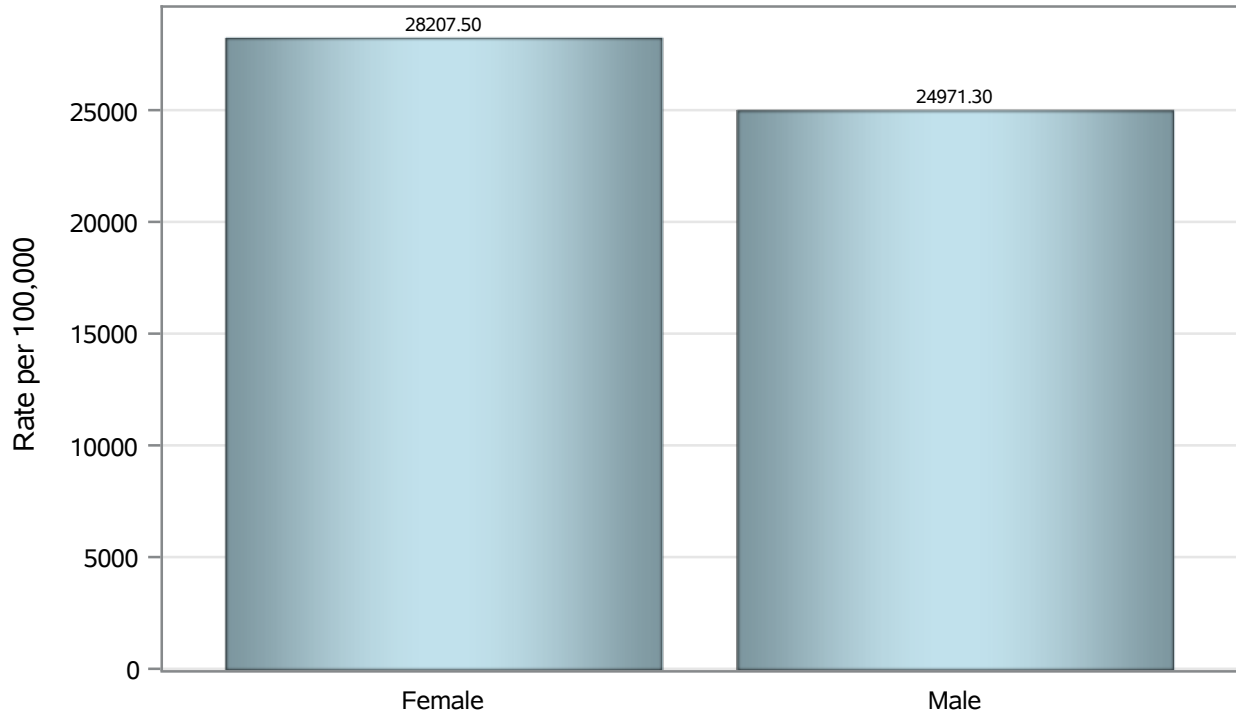
Note2: Rates for categories with fewer than 12 cases are suppressed due to high relative standard error.

Note3: Hospitalizations are regardless of deceased status; Deaths are regardless of hospitalization status

**Investigations are ongoing; data are subject to change.
Reporting through 27JUN2022**

North Las Vegas zip codes include 89030, 89031, 89032, 89033, 89036, 89081, 89084, 89085, 89086, 89087.

Case Birth Sex Rates in North Las Vegas

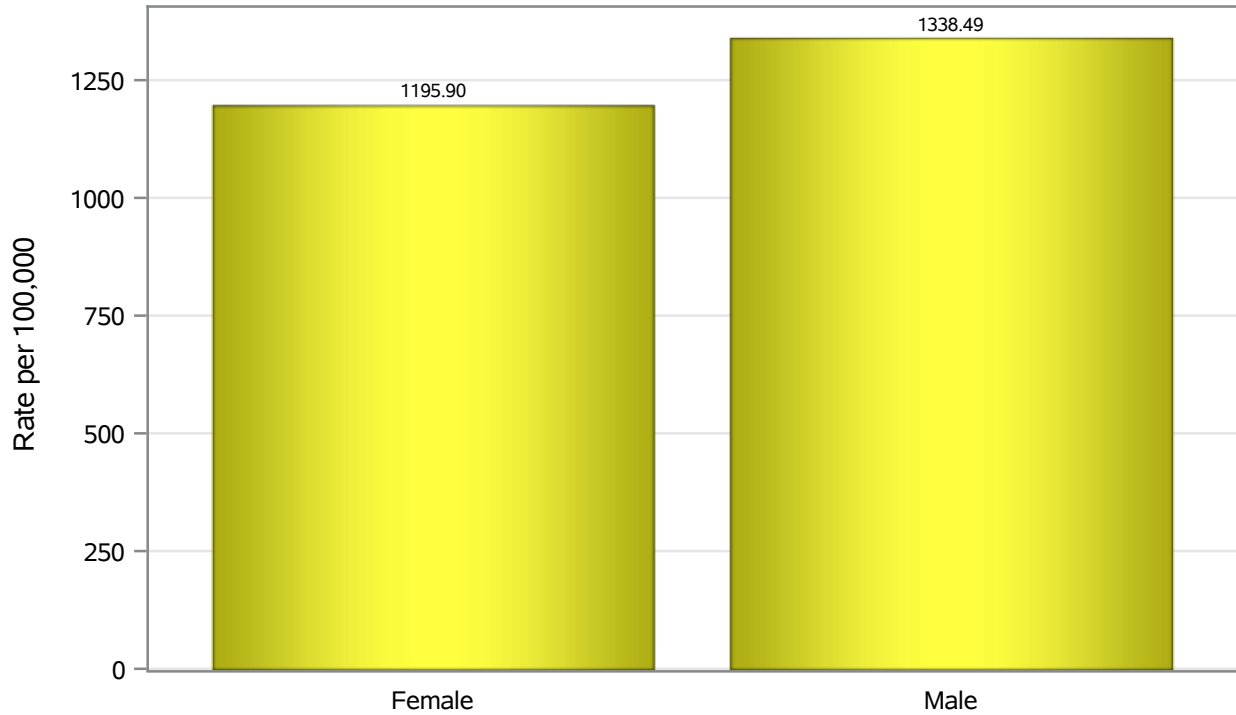


Investigations are ongoing; data are subject to change.

Reporting through 27JUN2022

North Las Vegas zip codes include 89030, 89031, 89032, 89033, 89036, 89081, 89084, 89085, 89086, 89087.

Hospitalization Birth Sex Rates in North Las Vegas

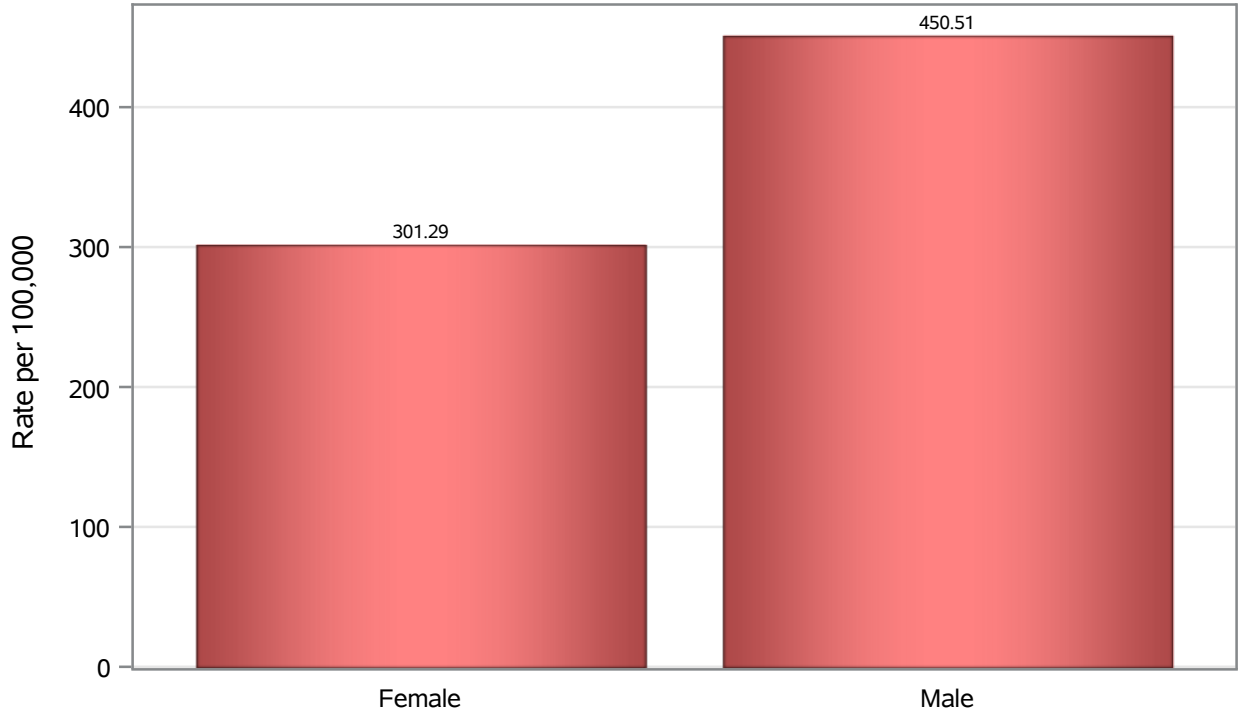


Investigations are ongoing; data are subject to change.

Reporting through 27JUN2022

North Las Vegas zip codes include 89030, 89031, 89032, 89033, 89036, 89081, 89084, 89085, 89086, 89087.

Death Birth Sex Rates in North Las Vegas



Investigations are ongoing; data are subject to change.

Reporting through 27JUN2022

North Las Vegas zip codes include 89030, 89031, 89032, 89033, 89036, 89081, 89084, 89085, 89086, 89087.

Table 7: Birth Sex and COVID19 in North Las Vegas

Case Status	Birth Sex Categories	N	%	Population	Rate per 100,000
Cases	Female	33517	53.6	118823	28208
	Male	28712	45.9	114980	24971
	Unknown	359	0.6	.	.
Hospitalizations	Female	1421	48.0	118823	1195.9
	Male	1539	51.9	114980	1338.5
	Unknown	3	0.1	.	.
Deaths	Female	358	40.8	118823	301.29
	Male	518	59.1	114980	450.51
	Unknown	1	0.1	.	.

Note1: Population data source for calculating rate estimates: U.S. Census Bureau, ACS 5-year estimate.

Note2: Rates for categories with fewer than 12 cases are suppressed due to high relative standard error.

Note3: Hospitalizations are regardless of deceased status; Deaths are regardless of hospitalization status

**Investigations are ongoing; data are subject to change.
Reporting through 27JUN2022**

North Las Vegas zip codes include 89030, 89031, 89032, 89033, 89036, 89081, 89084, 89085, 89086, 89087.