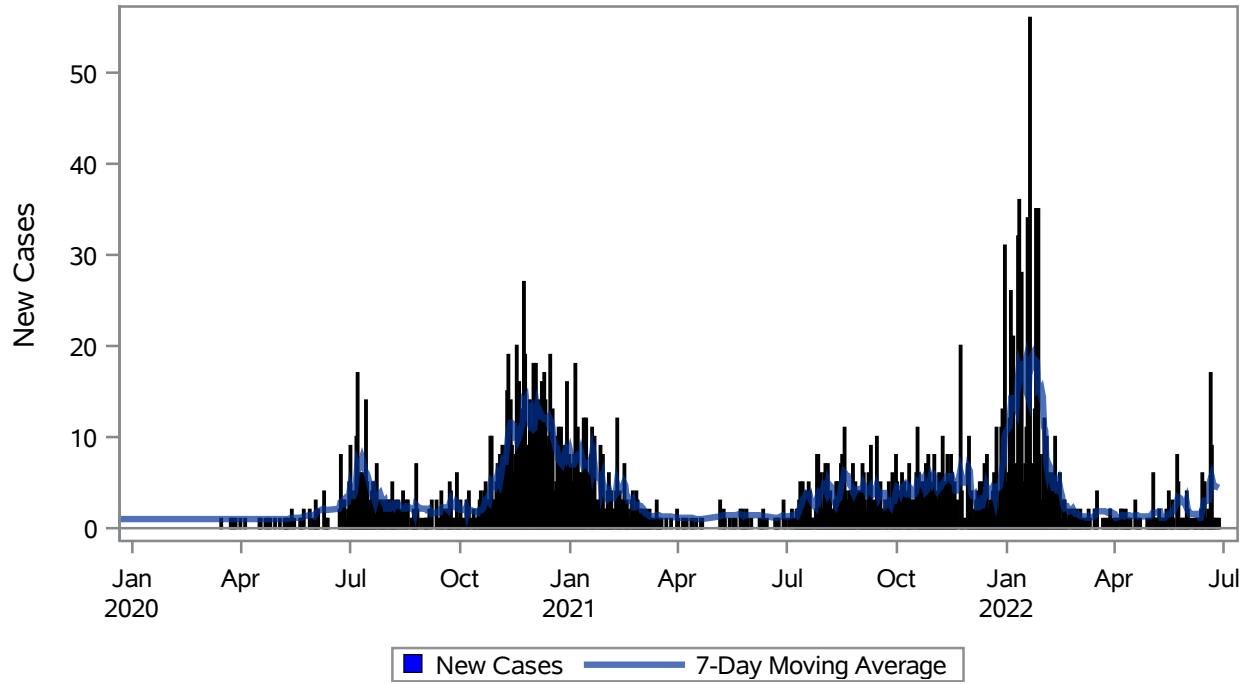


COVID19 Cases for Mesquite, 7-Day Moving Average

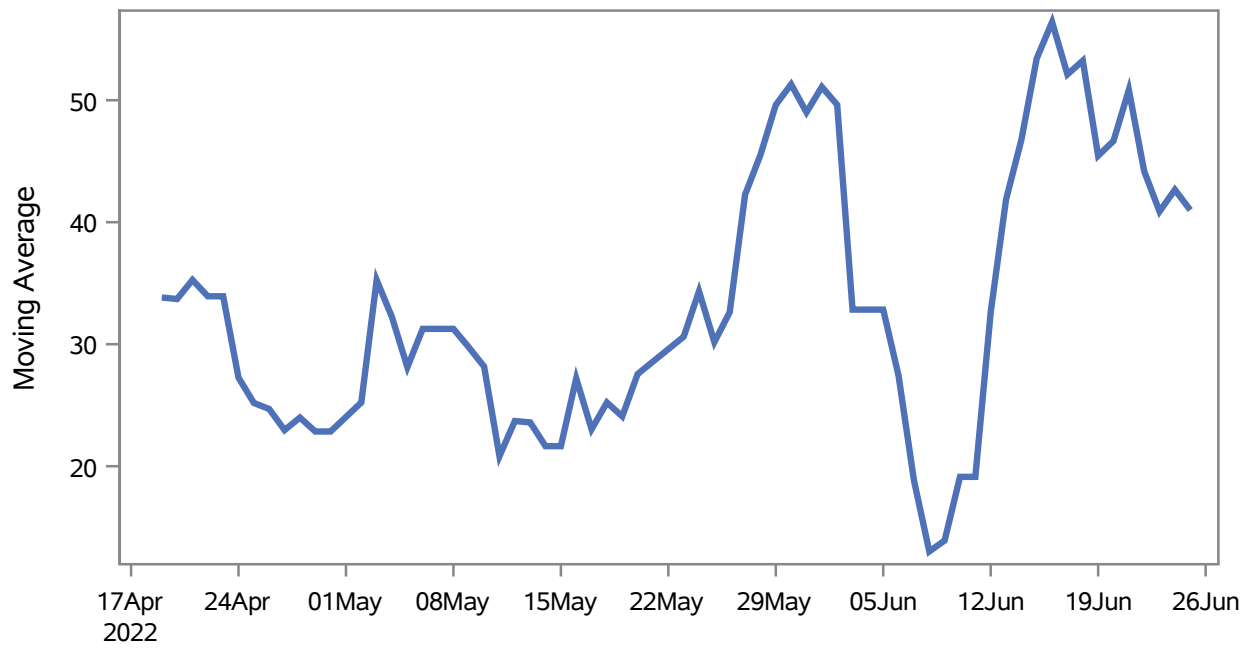


Investigations are ongoing; data are subject to change.

Reporting through 27JUN2022

Mesquite zip codes include 89027,89034. The U.S. Census Bureau data uses Zip Code Tabulation Area (ZCTA), which does not list 89034 but has incorporated areas of 89034 within 89027 through the American Community Survey (ACS) 5-Year Estimates.

Percent of People Receiving COVID-19 Viral Tests Who Have Positive Results in Mesquite



Investigations are ongoing; data are subject to change.

Reporting through 27JUN2022

Mesquite zip codes include 89027,89034. The U.S. Census Bureau data uses Zip Code Tabulation Area (ZCTA), which does not list 89034 but has incorporated areas of 89034 within 89027 through the American Community Survey (ACS) 5-Year Estimates.

Table 1: Age and COVID19 in Mesquite

Case Status	Age Categories	N	%	Population	Rate per 100,000
Cases	Aged 4 or less	28	1.0	702	3988.6
	Aged 5 to 17	257	9.5	2,217	11592
	Aged 18 to 24	237	8.7	938	25267
	Aged 25 to 49	737	27.1	3,386	21766
	Aged 50 to 64	589	21.7	3,371	17473
	Aged 64+	868	32.0	7,290	11907
Hospitalizations	Aged 4 or less	1	0.7	702	--
	Aged 5 to 17	1	0.7	2,217	--
	Aged 25 to 49	13	9.3	3,386	383.93
	Aged 50 to 64	23	16.4	3,371	682.29
	Aged 64+	102	72.9	7,290	1399.2
Deaths	Aged 25 to 49	2	3.4	3,386	--
	Aged 50 to 64	5	8.6	3,371	--
	Aged 64+	51	87.9	7,290	699.59

Note1: Population data source for calculating rate estimates: U.S. Census Bureau, ACS 5-year estimate.

Note2: Rates for categories with fewer than 12 cases are suppressed due to high relative standard error.

Note3: Hospitalizations are regardless of deceased status; Deaths are regardless of hospitalization status

**Investigations are ongoing; data are subject to change.
Reporting through 27JUN2022**

Mesquite zip codes include 89027,89034. The U.S. Census Bureau data uses Zip Code Tabulation Area (ZCTA), which does not list 89034 but has incorporated areas of 89034 within 89027 through the American Community Survey (ACS) 5-Year Estimates.

Table 2: Race/Ethnicity and COVID19 in Mesquite

Case Status	Race Ethnicity Categories	N	%	Population	Rate per 100,000
Cases	Hispanic	727	26.8	3,738	19449
	White	1523	56.1	13,120	11608
	Black	--	--	148	15541
	Asian	--	--	486	10494
	American Indian/Alaskan Native	--	--	95	22105
	Multi-race	--	--	240	--
	Native Hawaiian/Pacific Islander	--	--	30	60000
	Unknown	349	12.8	.	.
Hospitalizations	Hispanic	25	17.9	3,738	668.81
	White	100	71.4	13,120	762.20
	Black	--	--	148	--
	Asian	--	--	486	--
	American Indian/Alaskan Native	--	--	95	--
	Multi-race	--	--	240	--
	Native Hawaiian/Pacific Islander	--	--	30	--
	Unknown	7	5.0	.	.
Deaths	Hispanic	3	5.2	3,738	--
	White	52	89.7	13,120	396.34
	Asian	--	--	486	--
	American Indian/Alaskan Native	--	--	95	--
	Native Hawaiian/Pacific Islander	--	--	30	--

Note1: Population data source for calculating rate estimates: U.S. Census Bureau, ACS 5-year estimate.

Note2: Rates for categories with fewer than 12 cases are suppressed due to high relative standard error. Counts for categories with population less than 500 are suppressed for confidentiality.

Note3: Due to suppression, the total counts per case status may not equal expected totals.

Note4: Hospitalizations are regardless of deceased status; Deaths are regardless of hospitalization status

**Investigations are ongoing; data are subject to change.
Reporting through 27JUN2022**

Mesquite zip codes include 89027,89034. The U.S. Census Bureau data uses Zip Code Tabulation Area (ZCTA), which does not list 89034 but has incorporated areas of 89034 within 89027 through the American Community Survey (ACS) 5-Year Estimates.

Table 3: Birth Sex and COVID19 in Mesquite

Case Status	Birth Sex Categories	N	%	Population	Rate per 100,000
Cases	Female	1462	53.8	9,111	16047
	Male	1230	45.3	8,793	13988
	Unknown	24	0.9	.	.
Hospitalizations	Female	57	40.7	9,111	625.62
	Male	83	59.3	8,793	943.93
Deaths	Female	17	29.3	9,111	186.59
	Male	41	70.7	8,793	466.28

Note1: Population data source for calculating rate estimates: U.S. Census Bureau, ACS 5-year estimate.

Note2: Rates for categories with fewer than 12 cases are suppressed due to high relative standard error. Counts for categories with population less than 500 are suppressed for confidentiality.

Note3: Hospitalizations are regardless of deceased status; Deaths are regardless of hospitalization status

**Investigations are ongoing; data are subject to change.
Reporting through 27JUN2022**

Mesquite zip codes include 89027,89034. The U.S. Census Bureau data uses Zip Code Tabulation Area (ZCTA), which does not list 89034 but has incorporated areas of 89034 within 89027 through the American Community Survey (ACS) 5-Year Estimates.