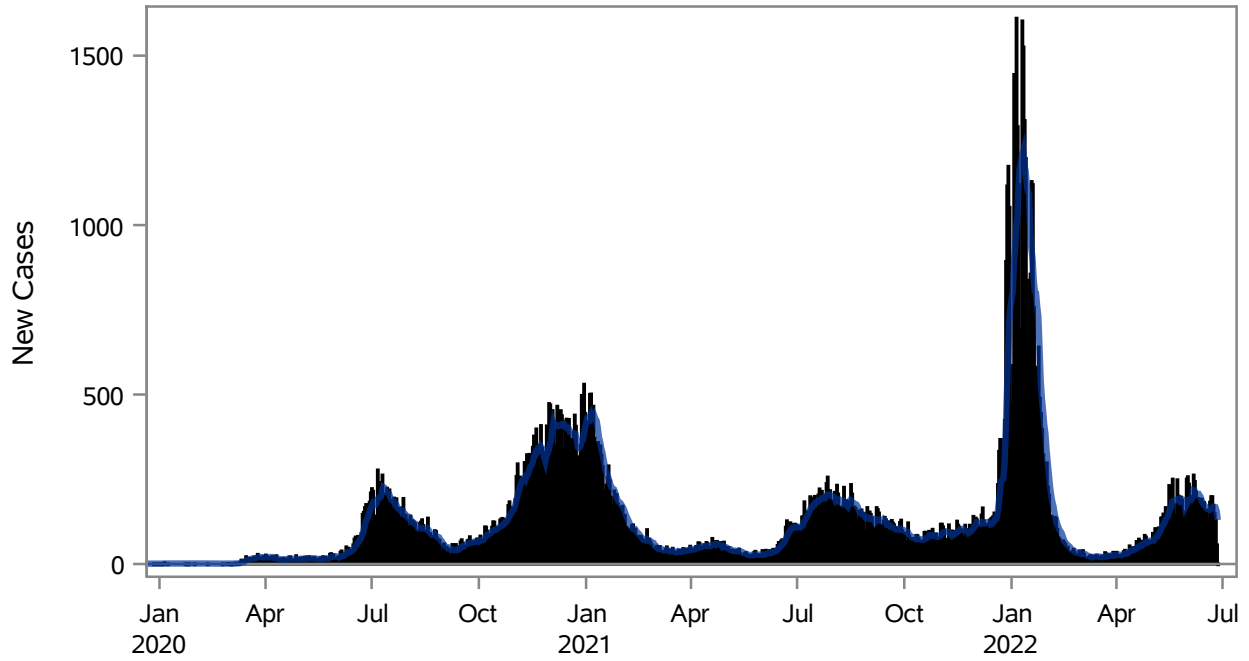


COVID19 Cases for Henderson, 7-Day Moving Average



■ New Cases — 7-Day Moving Average

Investigations are ongoing; data are subject to change.

Reporting through 27JUN2022

Henderson zip codes include 89002, 89011, 89012, 89014, 89015, 89044, 89052, 89074, 89119, 89120, 89122, 89123, 89124, 89183.

Table 1: New COVID19 Cases and 7-Day Moving Average in Henderson, Previous Two Weeks

Date (Daily)	New Cases	7-Day Moving Average
14JUN2022	174	179.29
15JUN2022	182	175.00
16JUN2022	157	171.00
17JUN2022	160	166.14
18JUN2022	129	161.86
19JUN2022	135	161.29
20JUN2022	183	160.00
21JUN2022	199	163.57
22JUN2022	199	166.00
23JUN2022	174	168.43
24JUN2022	149	166.86
25JUN2022	129	166.86

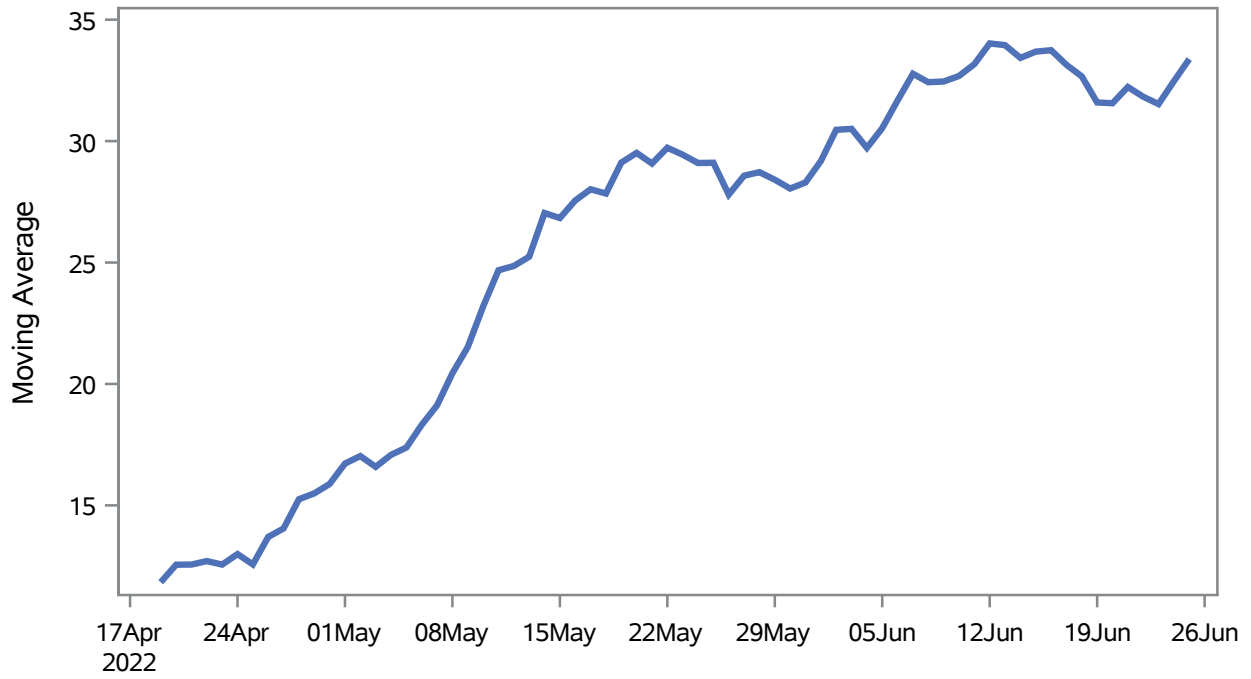
Note1: Event Date is calculated as follows based on completed information:
1) Disease onset date 2) Disease diagnosis date 3) Lab result collection date 4) Report date to SNHD.

Investigations are ongoing; data are subject to change.

Reporting through 27JUN2022

Henderson zip codes include 89002, 89011, 89012, 89014, 89015, 89044, 89052, 89074, 89119, 89120, 89122, 89123, 89124, 89183.

Percent of People Receiving COVID-19 Viral Tests Who Have Positive Results in Henderson



Investigations are ongoing; data are subject to change.

Reporting through 27JUN2022

Henderson zip codes include 89002, 89011, 89012, 89014, 89015, 89044, 89052, 89074, 89119, 89120, 89122, 89123, 89124, 89183.

Table 2: Percent of People Receiving COVID-19 Viral Tests Who Have Positive Results in Henderson

Collection Date	Positive	Negative	Equivocal	Total	% Positivity	7-Day Moving Average
11JUN2022	119	253	1	373	31.90	33.2
12JUN2022	110	151	1	262	41.98	34.0
13JUN2022	200	394	2	596	33.56	34.0
14JUN2022	163	327	1	491	33.20	33.4
15JUN2022	166	343		509	32.61	33.7
16JUN2022	172	408	2	582	29.55	33.7
17JUN2022	140	340		480	29.17	33.1
18JUN2022	130	325		455	28.57	32.7
19JUN2022	111	210	1	322	34.47	31.6
20JUN2022	153	304	2	459	33.33	31.6
21JUN2022	189	309	1	499	37.88	32.2
22JUN2022	147	344	2	493	29.82	31.8
23JUN2022	144	379	2	525	27.43	31.5
24JUN2022	166	295	3	464	35.78	32.5
25JUN2022	109	202	1	312	34.94	33.4

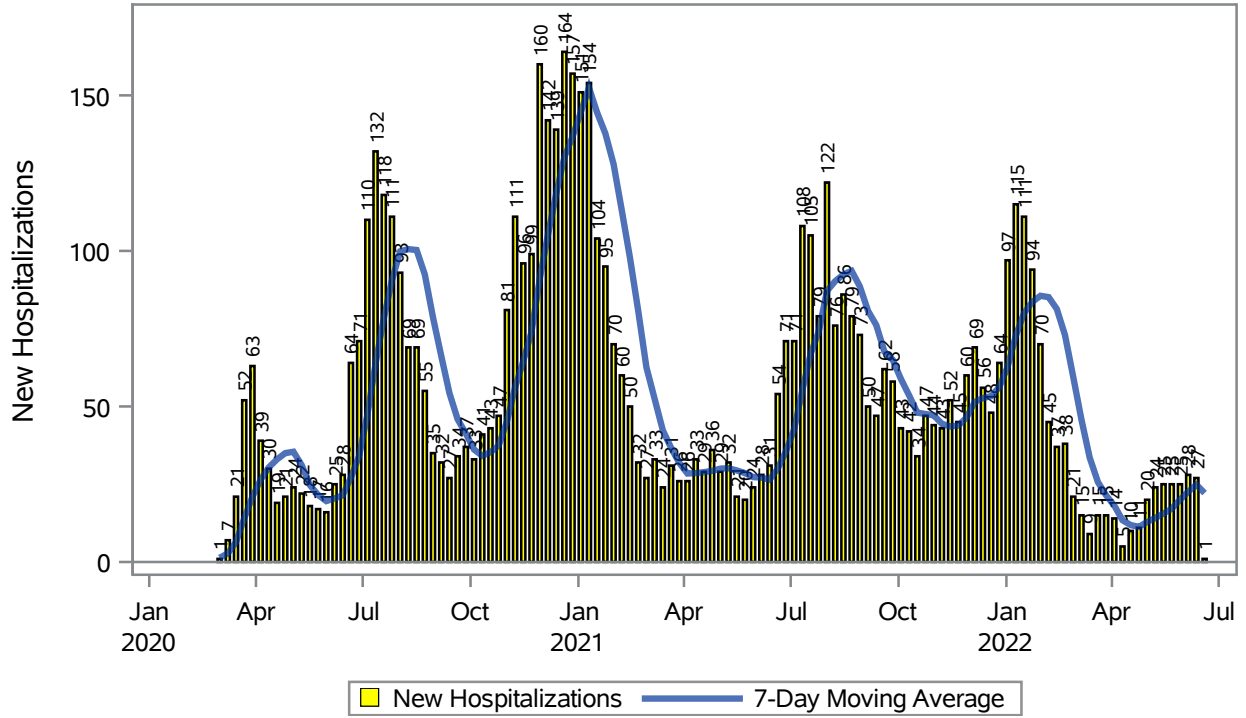
Note: Testing Data includes a 3 day delay

Investigations are ongoing; data are subject to change.

Reporting through 27JUN2022

Henderson zip codes include 89002, 89011, 89012, 89014, 89015, 89044, 89052, 89074, 89119, 89120, 89122, 89123, 89124, 89183.

COVID19 Hospitalizations for Henderson, 7-Day Moving Average



Investigations are ongoing; data are subject to change.

Reporting through 27JUN2022

Henderson zip codes include 89002, 89011, 89012, 89014, 89015, 89044, 89052, 89074, 89119, 89120, 89122, 89123, 89124, 89183.

Table 3: New COVID19-Related Hospitalizations and 7-Day Moving Average in Henderson, previous month

Week	Hospitalizations	7-Day Moving Average
29MAY2022	25	20.0
05JUN2022	28	22.6
12JUN2022	27	24.9
19JUN2022	1	22.1

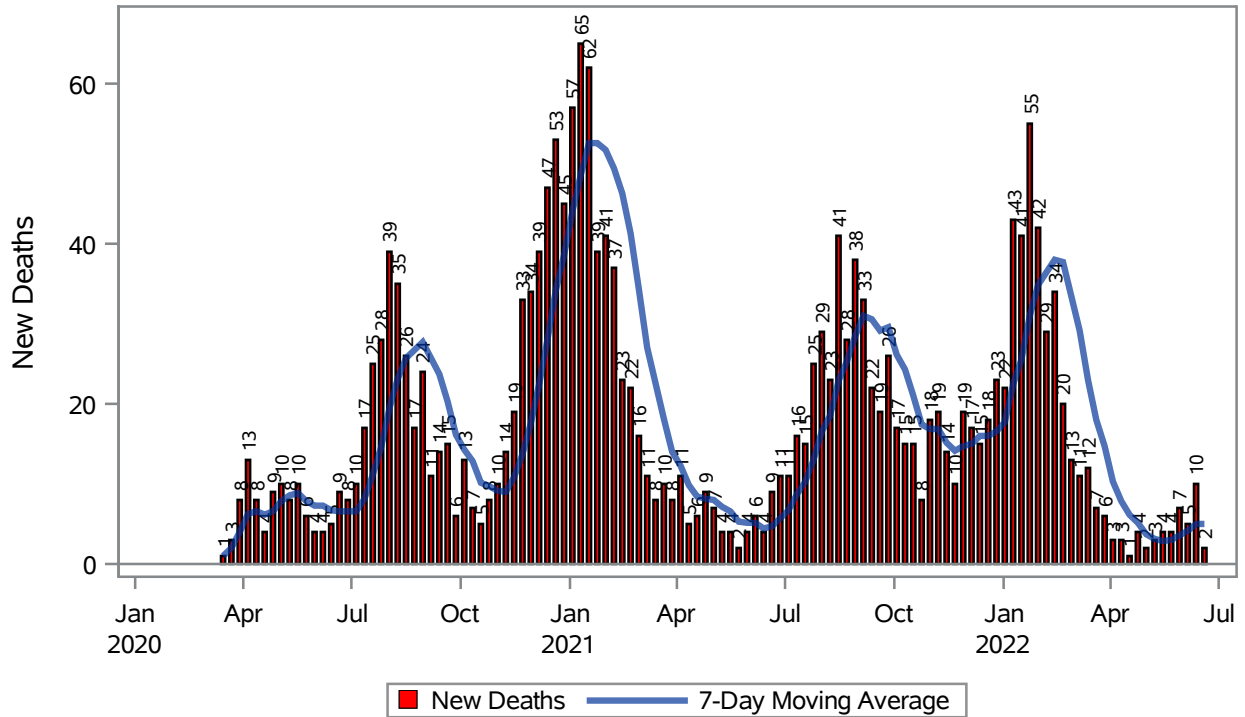
Note1: Admission Date is calculated as follows based on completed information:
A) COVID19 Case is hospitalized B) COVID19 Case has a hospital admission date.

If admission date is missing, then the following is substituted temporarily, in order:
1) Disease onset date 2) Disease diagnosis date 3) Lab result collection date 4) Report date to SNHD.

**Investigations are ongoing; data are subject to change.
Reporting through 27JUN2022**

Henderson zip codes include 89002, 89011, 89012, 89014, 89015, 89044, 89052, 89074, 89119, 89120, 89122, 89123, 89124, 89183.

COVID19 Deaths for Henderson, 7-Day Moving Average



Investigations are ongoing; data are subject to change.

Reporting through 27 JUN 2022

Henderson zip codes include 89002, 89011, 89012, 89014, 89015, 89044, 89052, 89074, 89119, 89120, 89122, 89123, 89124, 89183.

Table 4: New COVID19-Related Deaths and 7-Day Moving Average in Henderson, Previous Month

Week	Deaths	7-Day Moving Average
29MAY2022	7	3.57
05JUN2022	5	4.14
12JUN2022	10	5.00
19JUN2022	2	5.00

Note1: Date of Death is calculated as follows based on completed information:
A) COVID19 Case is reported as deceased B) COVID19 Case has a reported date of death.

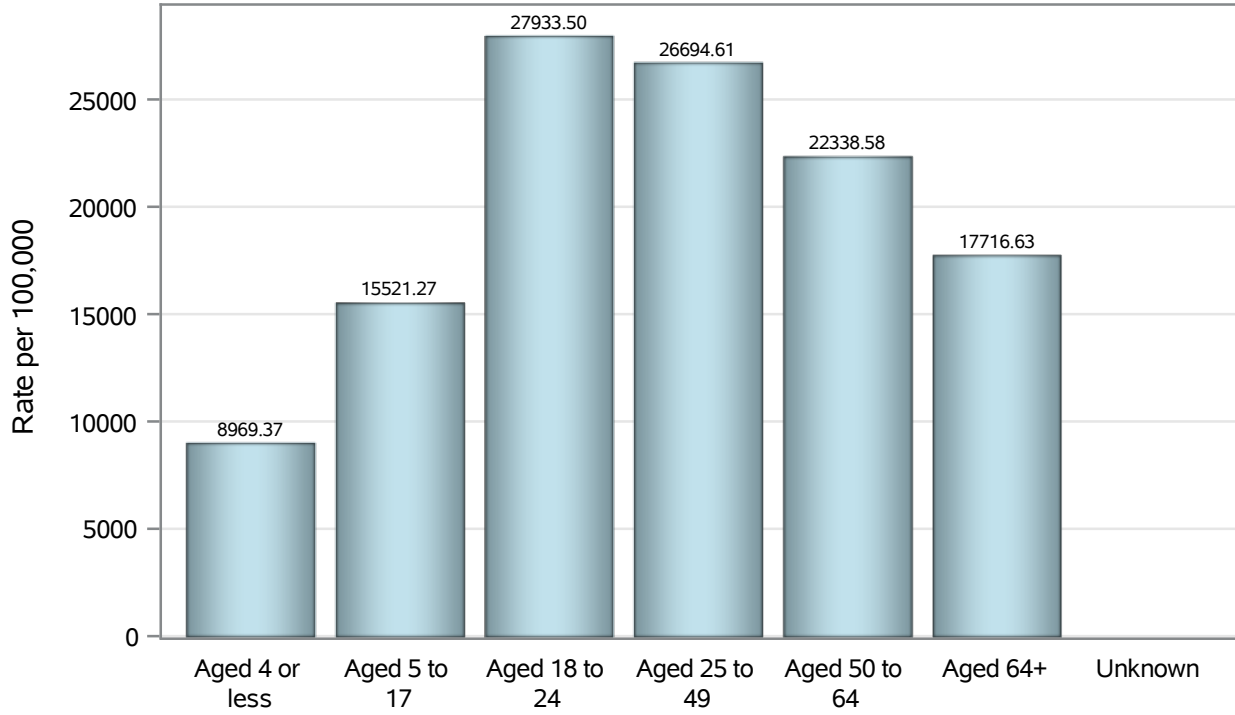
If date of death is missing, then the following is substituted temporarily, in order:
1) Disease onset date 2) Disease diagnosis date
3) Lab result collection date 4) Report date to SNHD.

Investigations are ongoing; data are subject to change.

Reporting through 27JUN2022

Henderson zip codes include 89002, 89011, 89012, 89014, 89015, 89044, 89052, 89074, 89119, 89120, 89122, 89123, 89124, 89183.

Case Age Rates in Henderson

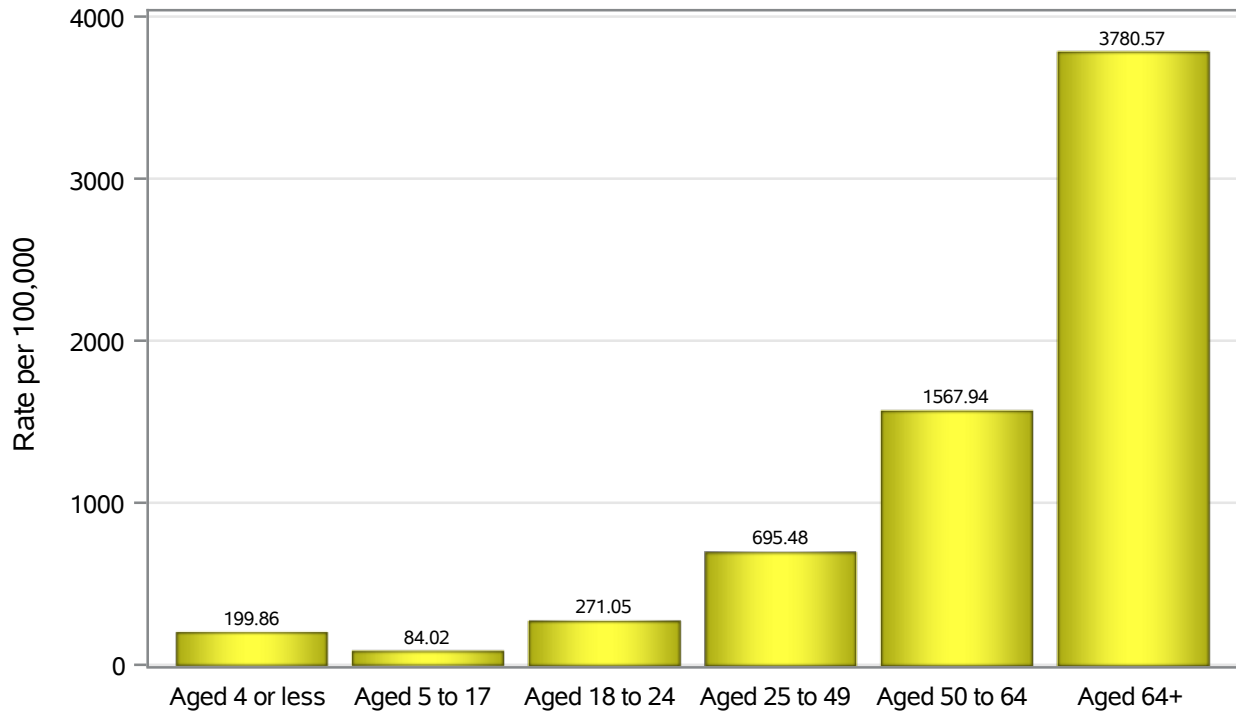


Investigations are ongoing; data are subject to change.

Reporting through 27JUN2022

Henderson zip codes include 89002, 89011, 89012, 89014, 89015, 89044, 89052, 89074, 89119, 89120, 89122, 89123, 89124, 89183.

Hospitalization Age Rates in Henderson

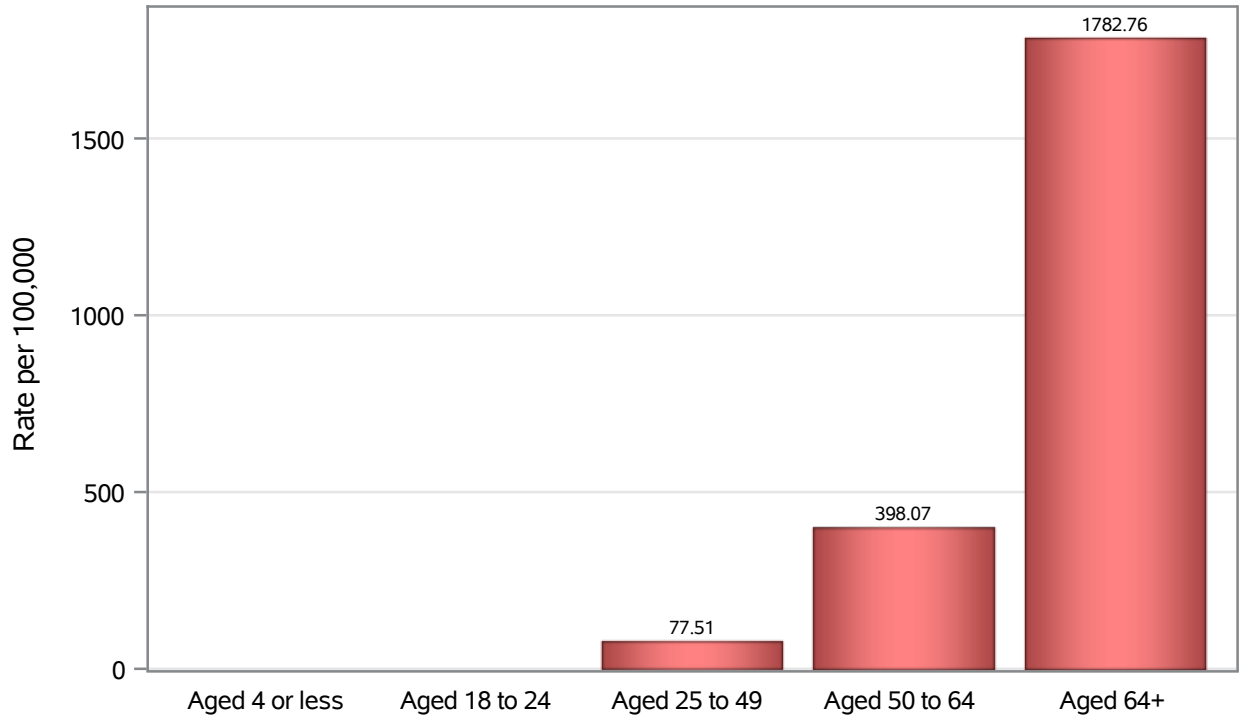


Investigations are ongoing; data are subject to change.

Reporting through 27JUN2022

Henderson zip codes include 89002, 89011, 89012, 89014, 89015, 89044, 89052, 89074, 89119, 89120, 89122, 89123, 89124, 89183.

Death Age Rates in Henderson



Investigations are ongoing; data are subject to change.

Reporting through 27JUN2022

Henderson zip codes include 89002, 89011, 89012, 89014, 89015, 89044, 89052, 89074, 89119, 89120, 89122, 89123, 89124, 89183.

Table 5: Age and COVID19 in Henderson

Case Status	Age Categories	N	%	Population	Rate per 100,000
Cases	Aged 4 or less	2603	2.2	29,021	8969.4
	Aged 5 to 17	12747	11.0	82,126	15521
	Aged 18 to 24	12367	10.7	44,273	27934
	Aged 25 to 49	49936	43.1	187064	26695
	Aged 50 to 64	22952	19.8	102746	22339
	Aged 64+	15324	13.2	86,495	17717
	Unknown	25	0.0	.	.
Hospitalizations	Aged 4 or less	58	0.9	29,021	199.86
	Aged 5 to 17	69	1.1	82,126	84.02
	Aged 18 to 24	120	1.9	44,273	271.05
	Aged 25 to 49	1301	20.2	187064	695.48
	Aged 50 to 64	1611	25.1	102746	1567.9
	Aged 64+	3270	50.9	86,495	3780.6
	Deaths	Aged 4 or less	1	0.0	29,021
Aged 18 to 24		3	0.1	44,273	.
Aged 25 to 49		145	6.9	187064	77.51
Aged 50 to 64		409	19.5	102746	398.07
Aged 64+		1542	73.4	86,495	1782.8

Note1: Population data source for calculating rate estimates: U.S. Census Bureau, ACS 5-year estimate.

Note2: Rates for categories with fewer than 12 cases are suppressed due to high relative standard error.

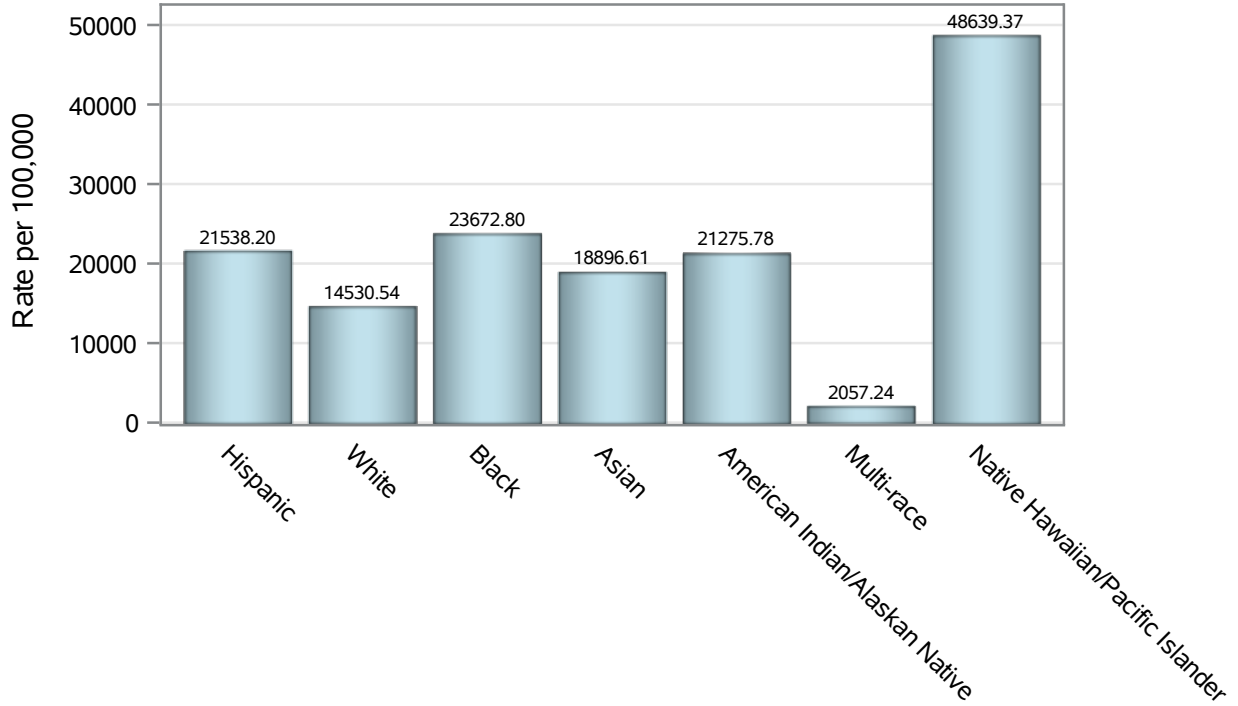
Note3: Hospitalizations are regardless of deceased status; Deaths are regardless of hospitalization status

Investigations are ongoing; data are subject to change.

Reporting through 27JUN2022

Henderson zip codes include 89002, 89011, 89012, 89014, 89015, 89044, 89052, 89074, 89119, 89120, 89122, 89123, 89124, 89183.

Case Race/Ethnicity Rates in Henderson

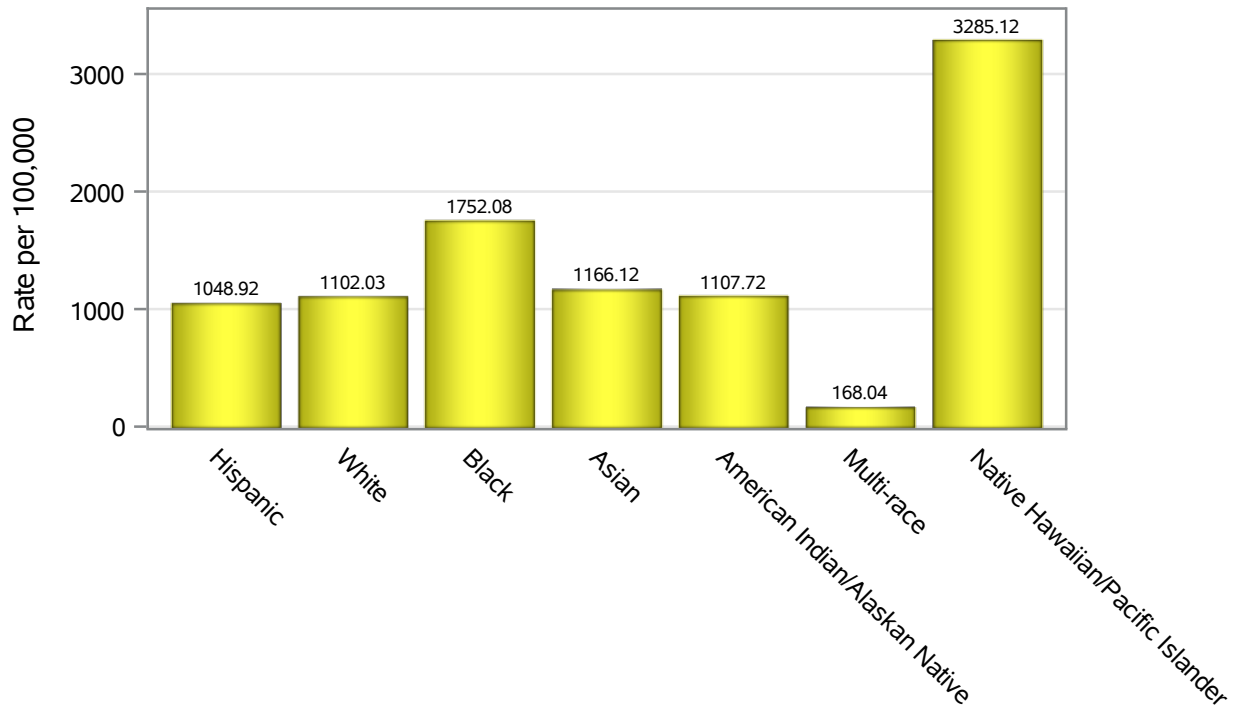


Investigations are ongoing; data are subject to change.

Reporting through 27JUN2022

Henderson zip codes include 89002, 89011, 89012, 89014, 89015, 89044, 89052, 89074, 89119, 89120, 89122, 89123, 89124, 89183.

Hospitalization Race/Ethnicity Rates in Henderson

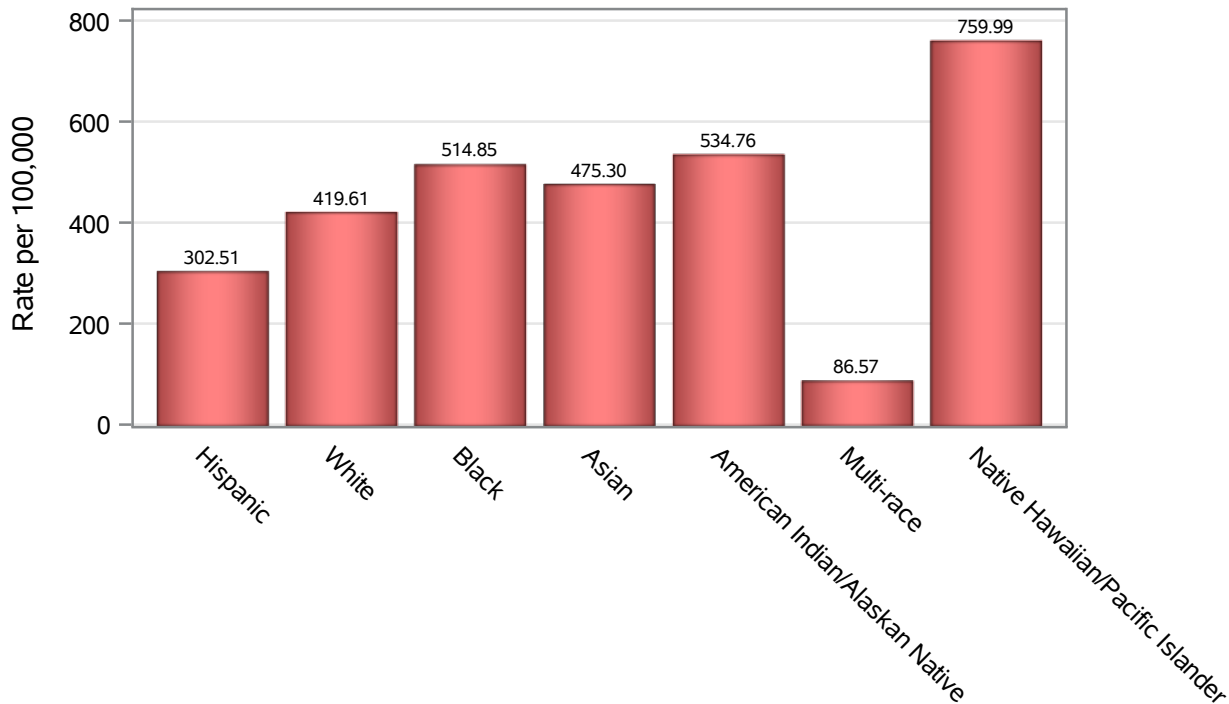


Investigations are ongoing; data are subject to change.

Reporting through 27JUN2022

Henderson zip codes include 89002, 89011, 89012, 89014, 89015, 89044, 89052, 89074, 89119, 89120, 89122, 89123, 89124, 89183.

Death Race/Ethnicity Rates in Henderson



Investigations are ongoing; data are subject to change.

Reporting through 27JUN2022

Henderson zip codes include 89002, 89011, 89012, 89014, 89015, 89044, 89052, 89074, 89119, 89120, 89122, 89123, 89124, 89183.

Table 6: Race/Ethnicity and COVID19 in Henderson

Case Status	Race Ethnicity Categories	N	%	Population	Rate per 100,000
Cases	Hispanic	26201	22.6	121649	21538
	White	42351	36.5	291462	14531
	Black	9012	7.8	38,069	23673
	Asian	9820	8.5	51,967	18897
	American Indian/Alaskan Native	557	0.5	2,618	21276
	Multi-race	404	0.3	19,638	2057.2
	Native Hawaiian/Pacific Islander	1984	1.7	4,079	48639
	Unknown	25625	22.1	.	.
Hospitalizations	Hispanic	1276	19.8	121649	1048.9
	White	3212	50.0	291462	1102.0
	Black	667	10.4	38,069	1752.1
	Asian	606	9.4	51,967	1166.1
	American Indian/Alaskan Native	29	0.5	2,618	1107.7
	Multi-race	33	0.5	19,638	168.04
	Native Hawaiian/Pacific Islander	134	2.1	4,079	3285.1
	Unknown	472	7.3	.	.
Deaths	Hispanic	368	17.5	121649	302.51
	White	1223	58.2	291462	419.61
	Black	196	9.3	38,069	514.85
	Asian	247	11.8	51,967	475.30
	American Indian/Alaskan Native	14	0.7	2,618	534.76
	Multi-race	17	0.8	19,638	86.57
	Native Hawaiian/Pacific Islander	31	1.5	4,079	759.99
	Unknown	4	0.2	.	.

Note1: Population data source for calculating rate estimates: U.S. Census Bureau, ACS 5-year estimate.

Note2: Rates for categories with fewer than 12 cases are suppressed due to high relative standard error.

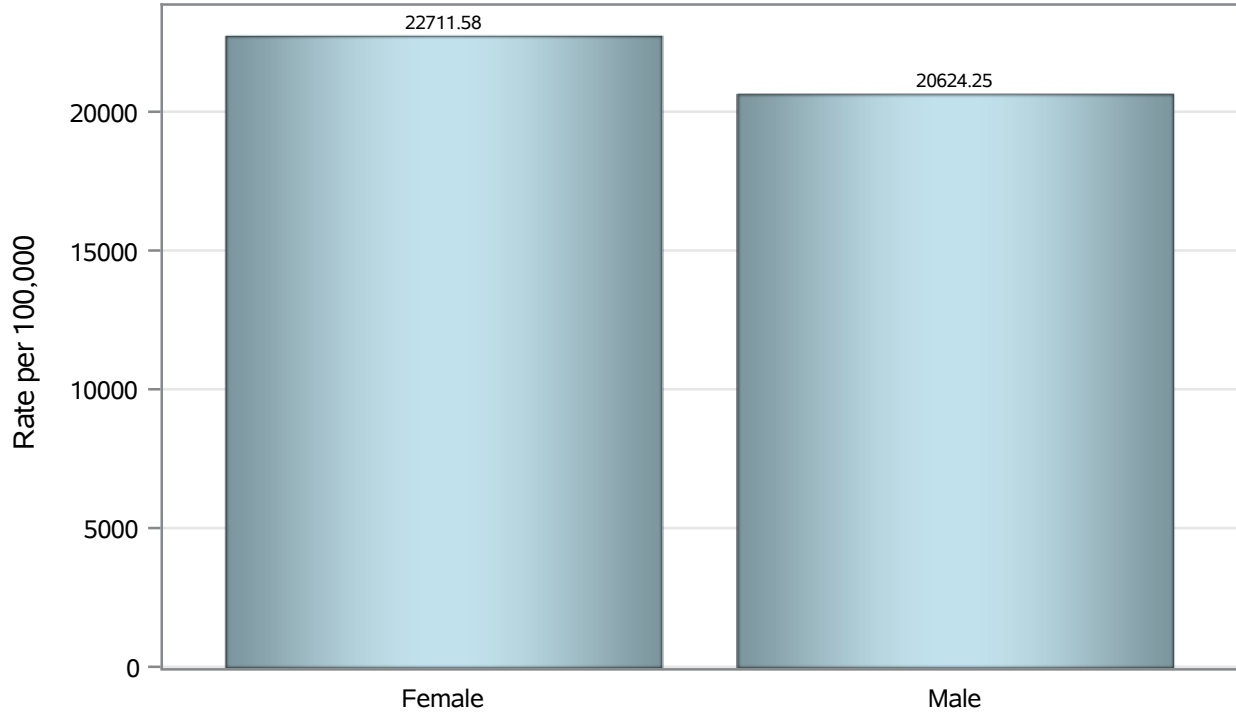
Note3: Hospitalizations are regardless of deceased status; Deaths are regardless of hospitalization status

Investigations are ongoing; data are subject to change.

Reporting through 27JUN2022

Henderson zip codes include 89002, 89011, 89012, 89014, 89015, 89044, 89052, 89074, 89119, 89120, 89122, 89123, 89124, 89183.

Case Birth Sex Rates in Henderson

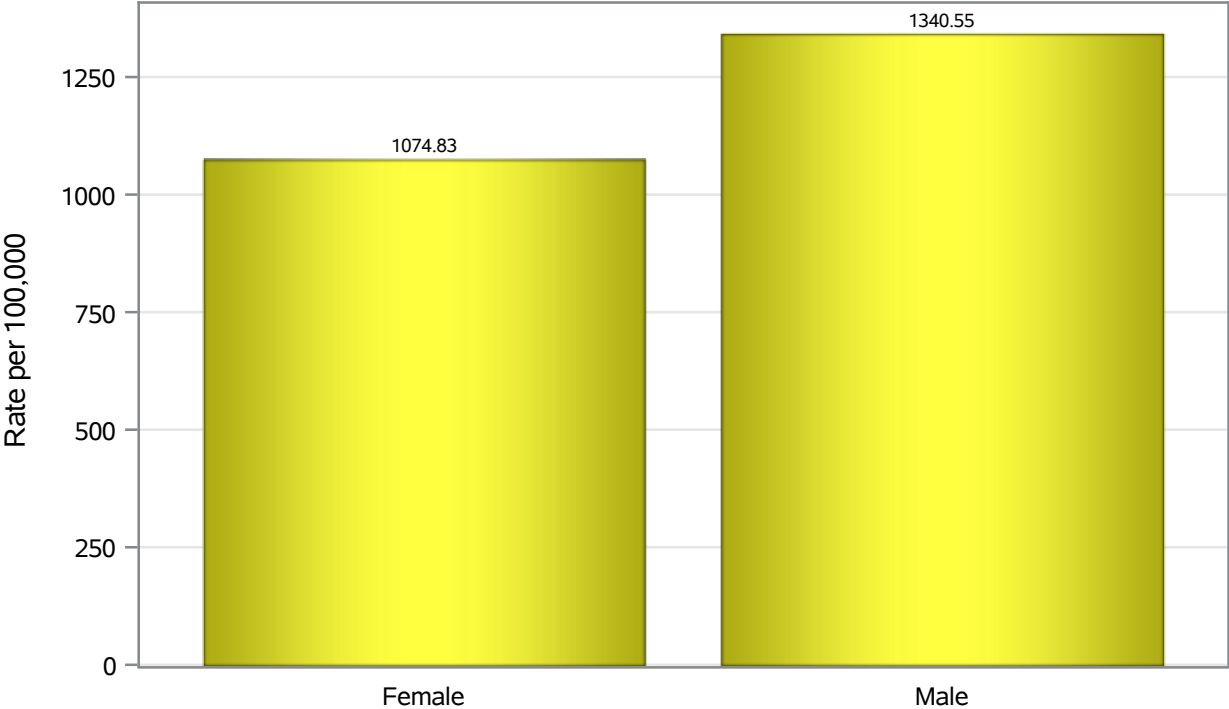


Investigations are ongoing; data are subject to change.

Reporting through 27JUN2022

Henderson zip codes include 89002, 89011, 89012, 89014, 89015, 89044, 89052, 89074, 89119, 89120, 89122, 89123, 89124, 89183.

Hospitalization Birth Sex Rates in Henderson

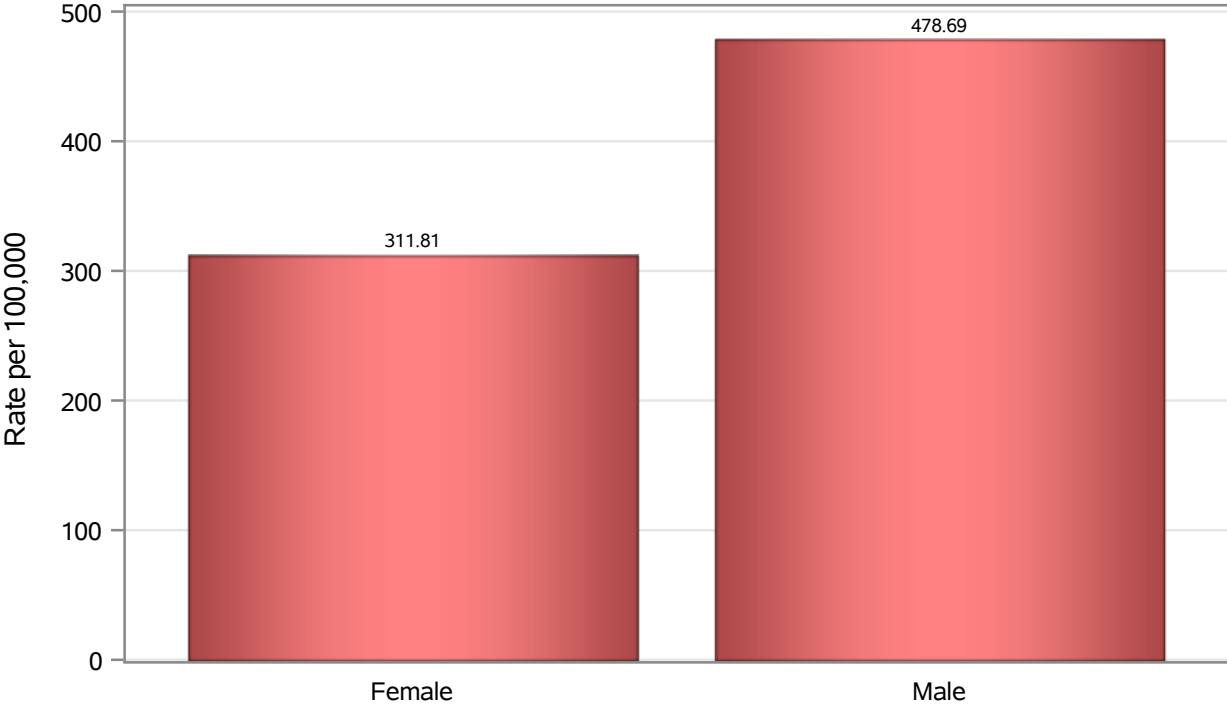


Investigations are ongoing; data are subject to change.

Reporting through 27JUN2022

Henderson zip codes include 89002, 89011, 89012, 89014, 89015, 89044, 89052, 89074, 89119, 89120, 89122, 89123, 89124, 89183.

Death Birth Sex Rates in Henderson



Investigations are ongoing; data are subject to change.
Reporting through 27JUN2022

Henderson zip codes include 89002, 89011, 89012, 89014, 89015, 89044, 89052, 89074, 89119, 89120, 89122, 89123, 89124, 89183.

Table 7: Birth Sex and COVID19 in Henderson

Case Status	Birth Sex Categories	N	%	Population	Rate per 100,000
Cases	Female	60602	52.3	266833	22712
	Male	54632	47.1	264892	20624
	Unknown	720	0.6	.	.
Hospitalizations	Female	2868	44.6	266833	1074.8
	Male	3551	55.2	264892	1340.5
	Unknown	10	0.2	.	.
Deaths	Female	832	39.6	266833	311.81
	Male	1268	60.4	264892	478.69

Note1: Population data source for calculating rate estimates: U.S. Census Bureau, ACS 5-year estimate.

Note2: Rates for categories with fewer than 12 cases are suppressed due to high relative standard error.

Note3: Hospitalizations are regardless of deceased status; Deaths are regardless of hospitalization status

Investigations are ongoing; data are subject to change.

Reporting through 27JUN2022

Henderson zip codes include 89002, 89011, 89012, 89014, 89015, 89044, 89052, 89074, 89119, 89120, 89122, 89123, 89124, 89183.