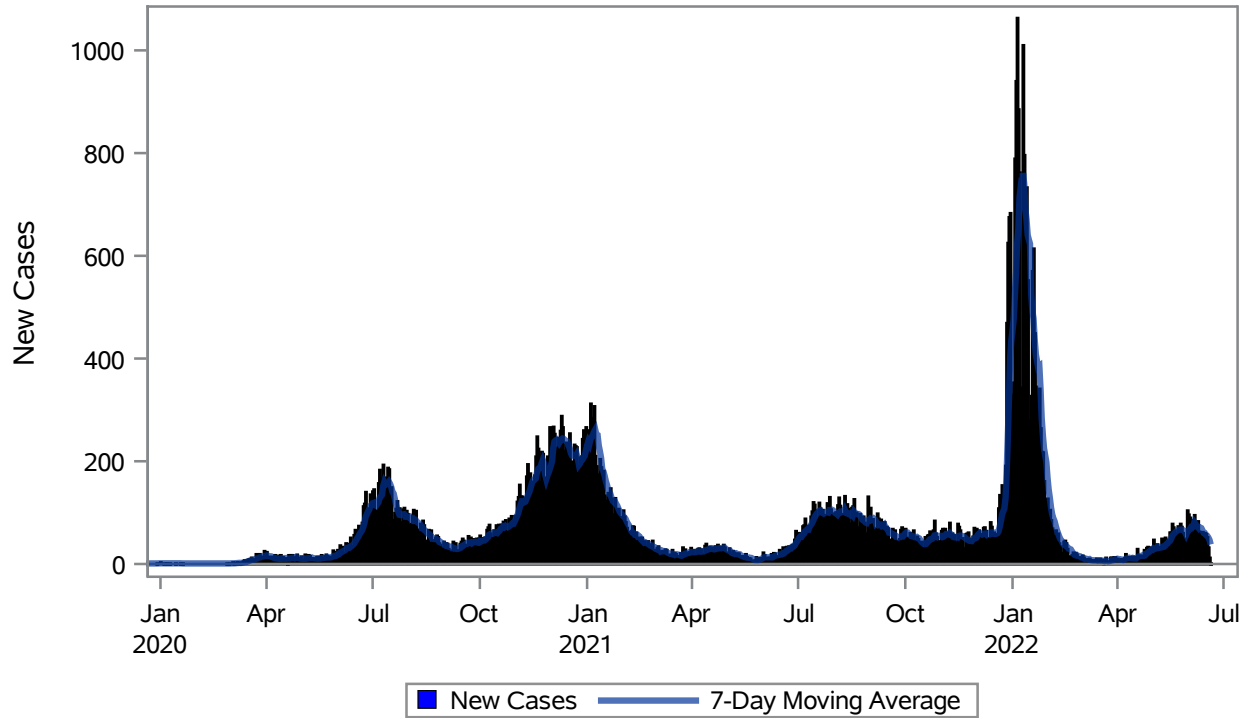


COVID19 Cases for North Las Vegas, 7-Day Moving Average



Investigations are ongoing; data are subject to change.

Reporting through 20JUN2022

North Las Vegas zip codes include 89030, 89031, 89032, 89033, 89036, 89081, 89084, 89085, 89086, 89087.

Table 1: New COVID19 Cases and 7-Day Moving Average in North Las Vegas, Previous Two Weeks

Date (Daily)	New Cases	7-Day Moving Average
07JUN2022	81	77.71
08JUN2022	65	73.29
09JUN2022	83	72.29
10JUN2022	63	69.14
11JUN2022	56	71.00
12JUN2022	45	69.71
13JUN2022	62	65.00
14JUN2022	51	60.71
15JUN2022	60	60.00
16JUN2022	58	56.43
17JUN2022	52	54.86
18JUN2022	32	51.43

Note1: Event Date is calculated as follows based on completed information:

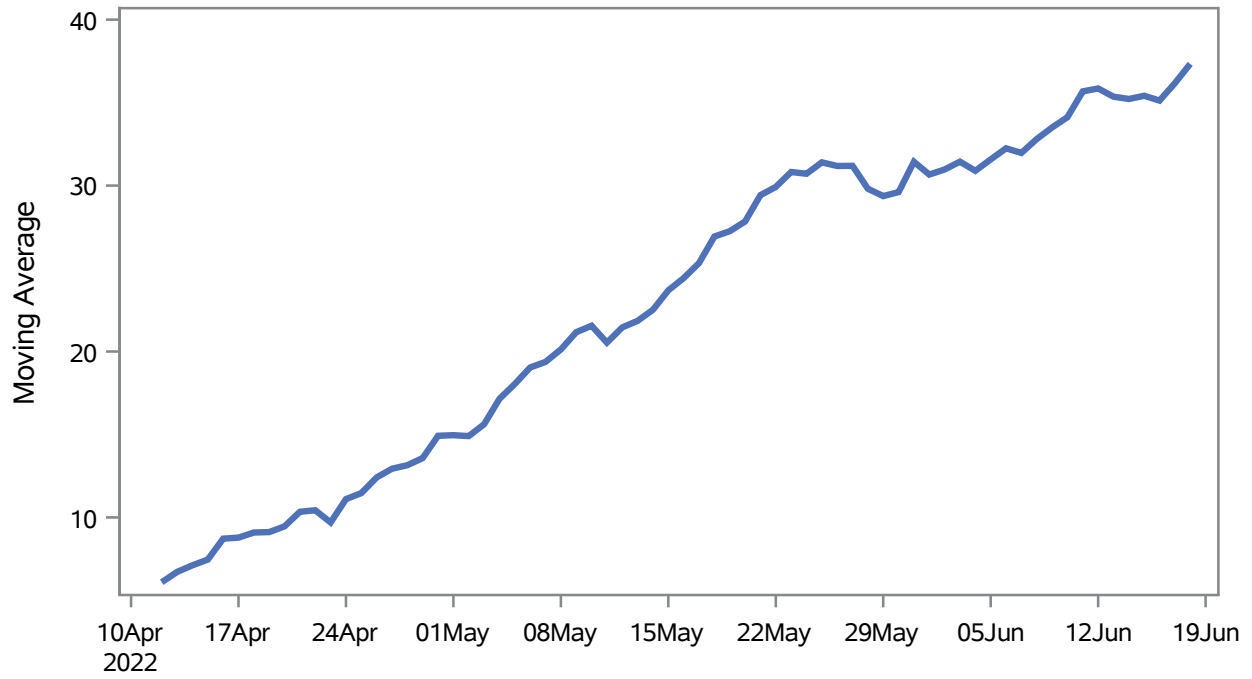
1) Disease onset date 2) Disease diagnosis date 3) Lab result collection date 4) Report date to SNHD.

Investigations are ongoing; data are subject to change.

Reporting through 20JUN2022

North Las Vegas zip codes include 89030, 89031, 89032, 89033, 89036, 89081, 89084, 89085, 89086, 89087.

Percent of People Receiving COVID-19 Viral Tests Who Have Positive Results in North Las Vegas



Investigations are ongoing; data are subject to change.

Reporting through 20JUN2022

North Las Vegas zip codes include 89030, 89031, 89032, 89033, 89036, 89081, 89084, 89085, 89086, 89087.

Table 2: Percent of People Receiving COVID-19 Viral Tests Who Have Positive Results in North Las Vegas

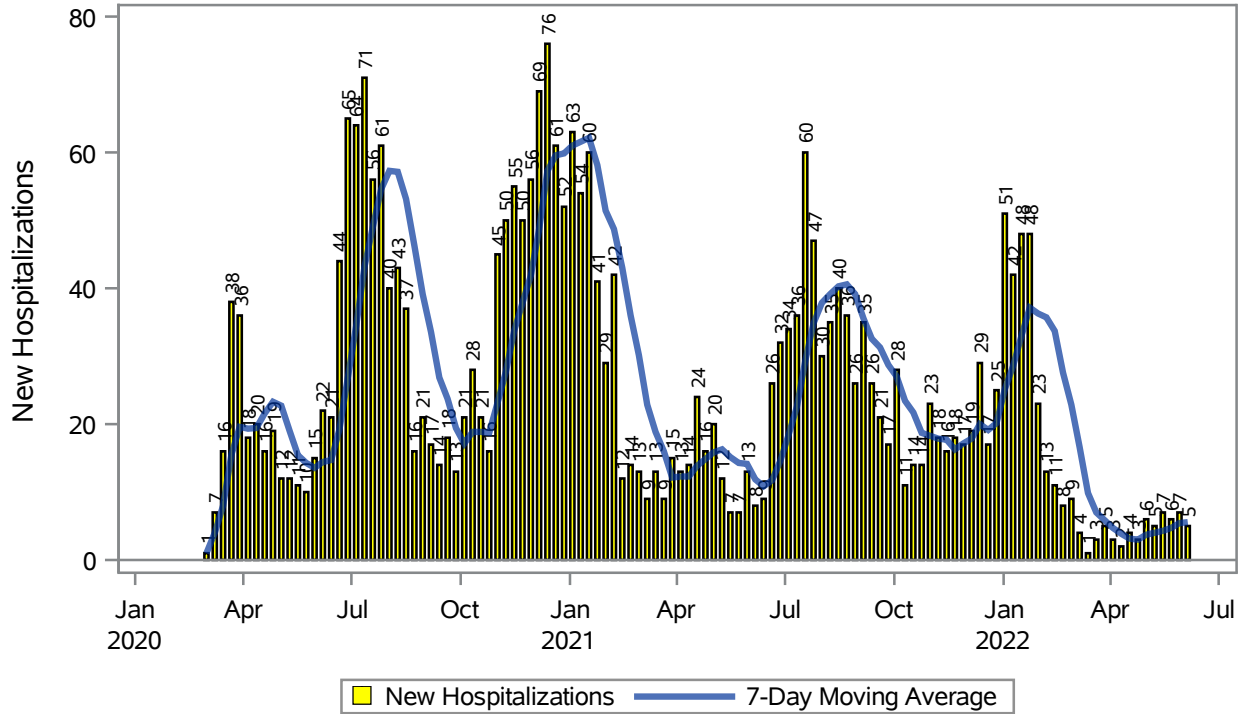
Collection Date	Positive	Negative	Equivocal	Total	% Positivity	7-Day Moving Average
04JUN2022	53	180		233	22.75	30.9
05JUN2022	74	125		199	37.19	31.6
06JUN2022	129	201		330	39.09	32.2
07JUN2022	119	213		332	35.84	32.0
08JUN2022	112	223	2	337	33.23	32.8
09JUN2022	115	209	4	328	35.06	33.5
10JUN2022	91	164		255	35.69	34.1
11JUN2022	73	144		217	33.64	35.7
12JUN2022	68	109		177	38.42	35.9
13JUN2022	104	185	3	292	35.62	35.4
14JUN2022	91	169	1	261	34.87	35.2
15JUN2022	100	187	2	289	34.60	35.4
16JUN2022	108	218	1	327	33.03	35.1
17JUN2022	99	130	1	230	43.04	36.2
18JUN2022	66	92		158	41.77	37.3

Note: Testing Data includes a 3 day delay

**Investigations are ongoing; data are subject to change.
Reporting through 20JUN2022**

North Las Vegas zip codes include 89030, 89031, 89032, 89033, 89036, 89081, 89084, 89085, 89086, 89087.

COVID19 Hospitalizations for North Las Vegas, 7-Day Moving Average



Investigations are ongoing; data are subject to change.

Reporting through 20JUN2022

North Las Vegas zip codes include 89030, 89031, 89032, 89033, 89036, 89081, 89084, 89085, 89086, 89087.

Table 3: New COVID19-Related Hospitalizations and 7-Day Moving Average in North Las Vegas, previous month

Week	Hospitalizations	7-Day Moving Average
22MAY2022	6	4.71
29MAY2022	7	5.43
05JUN2022	5	5.57

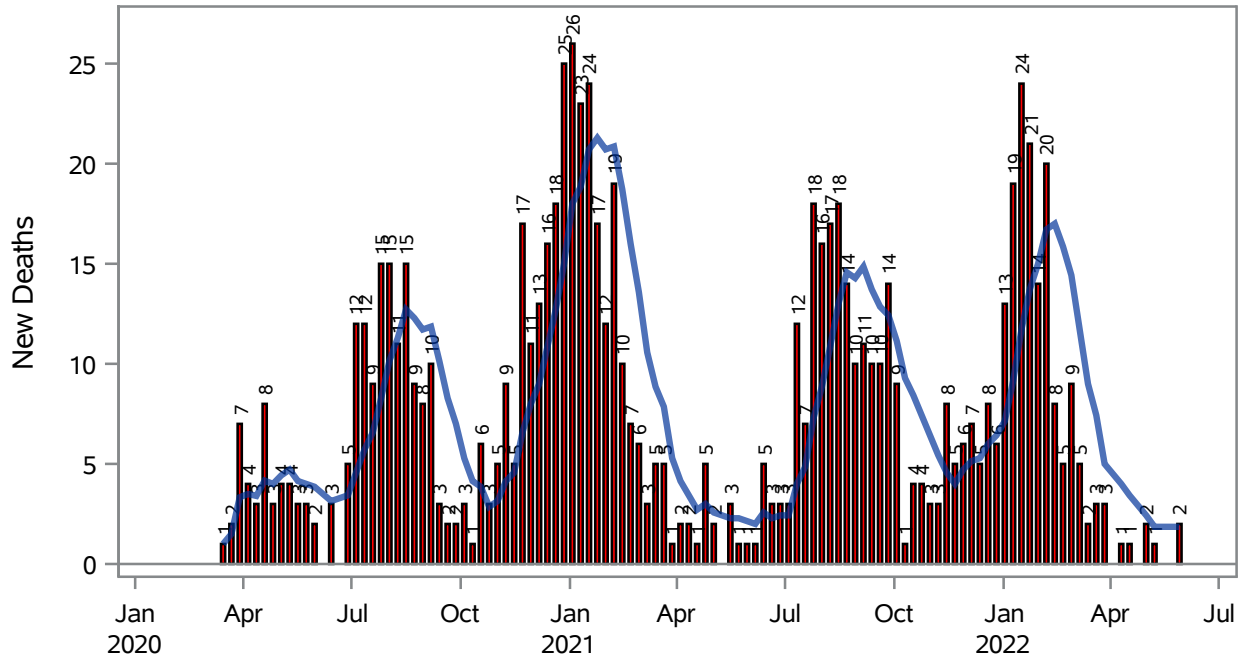
Note1: Admission Date is calculated as follows based on completed information:
A) COVID19 Case is hospitalized B) COVID19 Case has a hospital admission date.

If admission date is missing, then the following is substituted temporarily, in order:
1) Disease onset date 2) Disease diagnosis date 3) Lab result collection date 4) Report date to SNHD.

**Investigations are ongoing; data are subject to change.
Reporting through 20JUN2022**

North Las Vegas zip codes include 89030, 89031, 89032, 89033, 89036, 89081, 89084, 89085, 89086, 89087.

COVID19 Deaths for North Las Vegas, 7-Day Moving Average



■ New Deaths — 7-Day Moving Average

Investigations are ongoing; data are subject to change.

Reporting through 20JUN2022

North Las Vegas zip codes include 89030, 89031, 89032, 89033, 89036, 89081, 89084, 89085, 89086, 89087.

Table 4: New COVID19-Related Deaths and 7-Day Moving Average in North Las Vegas, Previous Month

Week	Deaths	7-Day Moving Average
29MAY2022	2	1.86

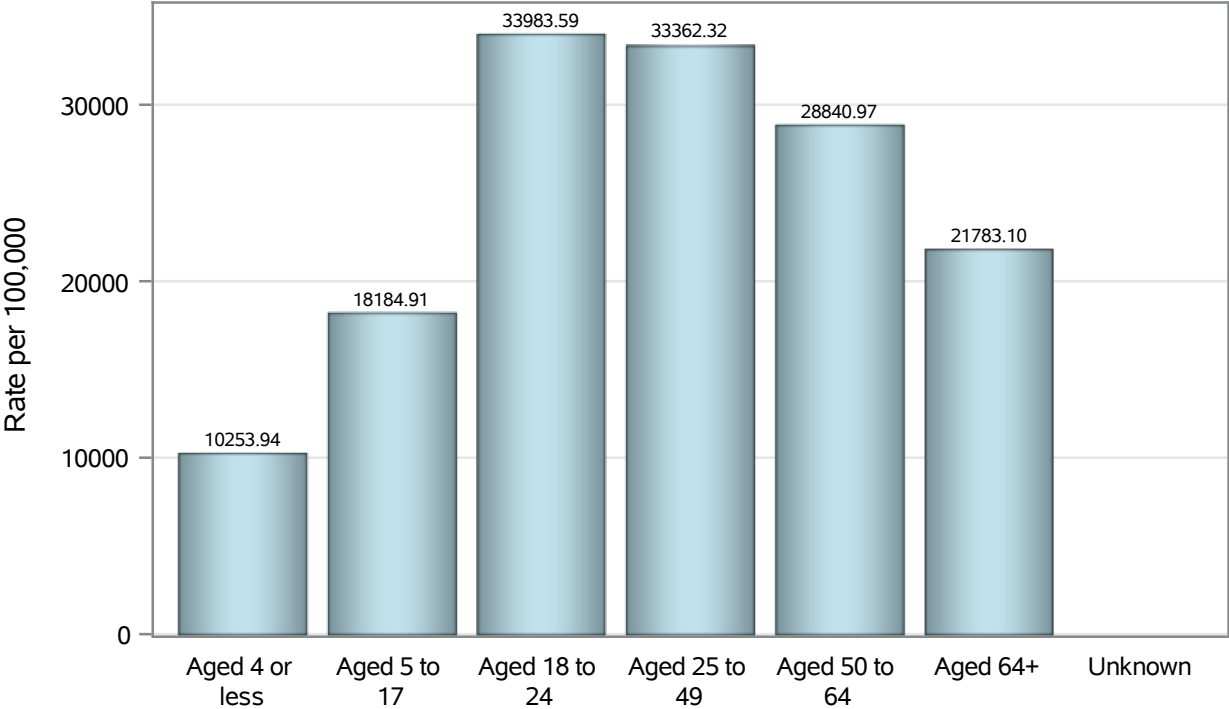
Note1: Date of Death is calculated as follows based on completed information:
A) COVID19 Case is reported as deceased B) COVID19 Case has a reported date of death.

If date of death is missing, then the following is substituted temporarily, in order:
1) Disease onset date 2) Disease diagnosis date
3) Lab result collection date 4) Report date to SNHD.

**Investigations are ongoing; data are subject to change.
Reporting through 20JUN2022**

North Las Vegas zip codes include 89030, 89031, 89032, 89033, 89036, 89081, 89084, 89085, 89086, 89087.

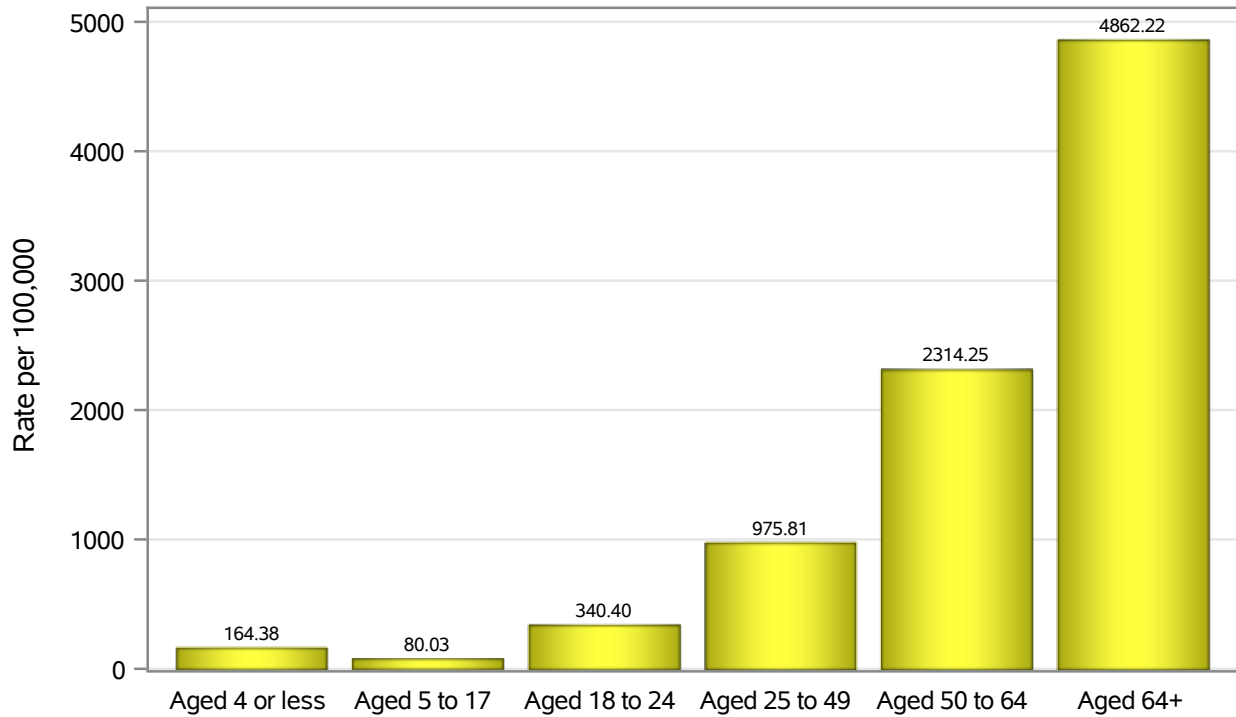
Case Age Rates in North Las Vegas



Investigations are ongoing; data are subject to change.
Reporting through 20JUN2022

North Las Vegas zip codes include 89030, 89031, 89032, 89033, 89036, 89081, 89084, 89085, 89086, 89087.

Hospitalization Age Rates in North Las Vegas

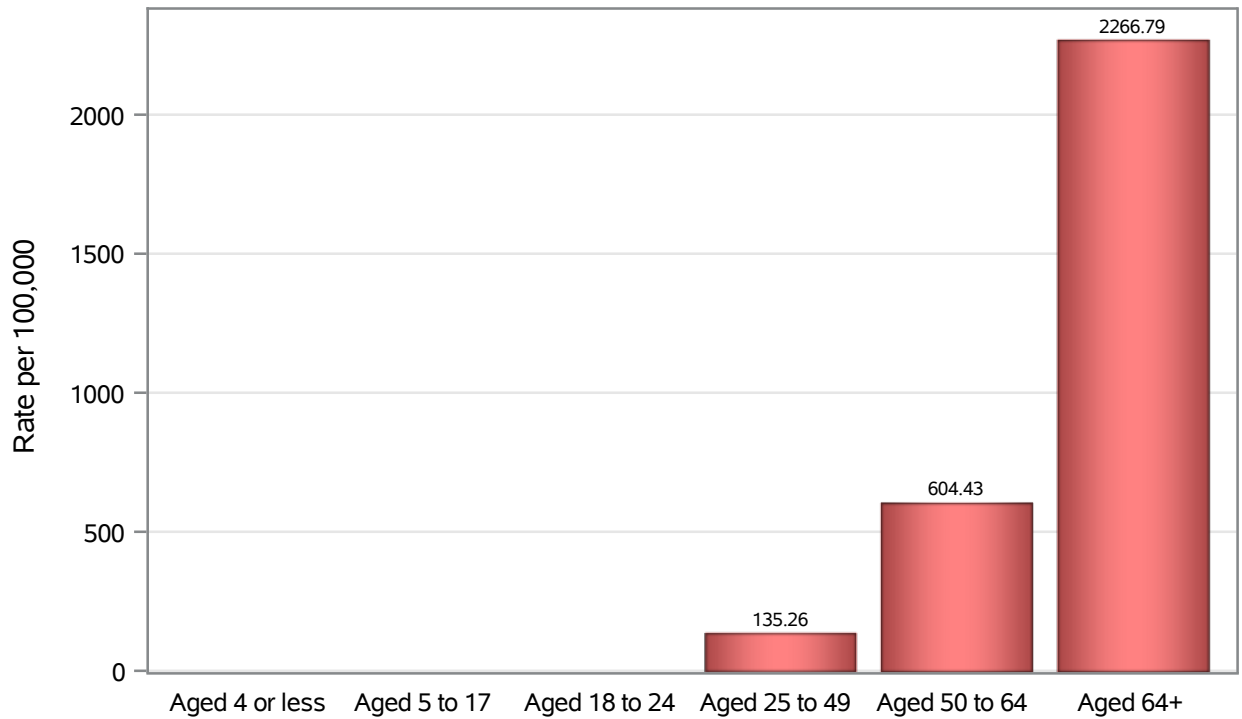


Investigations are ongoing; data are subject to change.

Reporting through 20JUN2022

North Las Vegas zip codes include 89030, 89031, 89032, 89033, 89036, 89081, 89084, 89085, 89086, 89087.

Death Age Rates in North Las Vegas



Investigations are ongoing; data are subject to change.

Reporting through 20JUN2022

North Las Vegas zip codes include 89030, 89031, 89032, 89033, 89036, 89081, 89084, 89085, 89086, 89087.

Table 5: Age and COVID19 in North Las Vegas

Case Status	Age Categories	N	%	Population	Rate per 100,000
Cases	Aged 4 or less	1809	2.9	17,642	10254
	Aged 5 to 17	9089	14.6	49,981	18185
	Aged 18 to 24	7787	12.5	22,914	33984
	Aged 25 to 49	27625	44.5	82,803	33362
	Aged 50 to 64	10593	17.1	36,729	28841
	Aged 64+	5170	8.3	23,734	21783
	Unknown	12	0.0	.	.
Hospitalizations	Aged 4 or less	29	1.0	17,642	164.38
	Aged 5 to 17	40	1.4	49,981	80.03
	Aged 18 to 24	78	2.6	22,914	340.40
	Aged 25 to 49	808	27.3	82,803	975.81
	Aged 50 to 64	850	28.7	36,729	2314.2
	Aged 64+	1154	39.0	23,734	4862.2
	Deaths	Aged 4 or less	1	0.1	17,642
Aged 5 to 17		1	0.1	49,981	.
Aged 18 to 24		2	0.2	22,914	.
Aged 25 to 49		112	12.8	82,803	135.26
Aged 50 to 64		222	25.3	36,729	604.43
Aged 64+		538	61.4	23,734	2266.8

Note1: Population data source for calculating rate estimates: U.S. Census Bureau, ACS 5-year estimate.

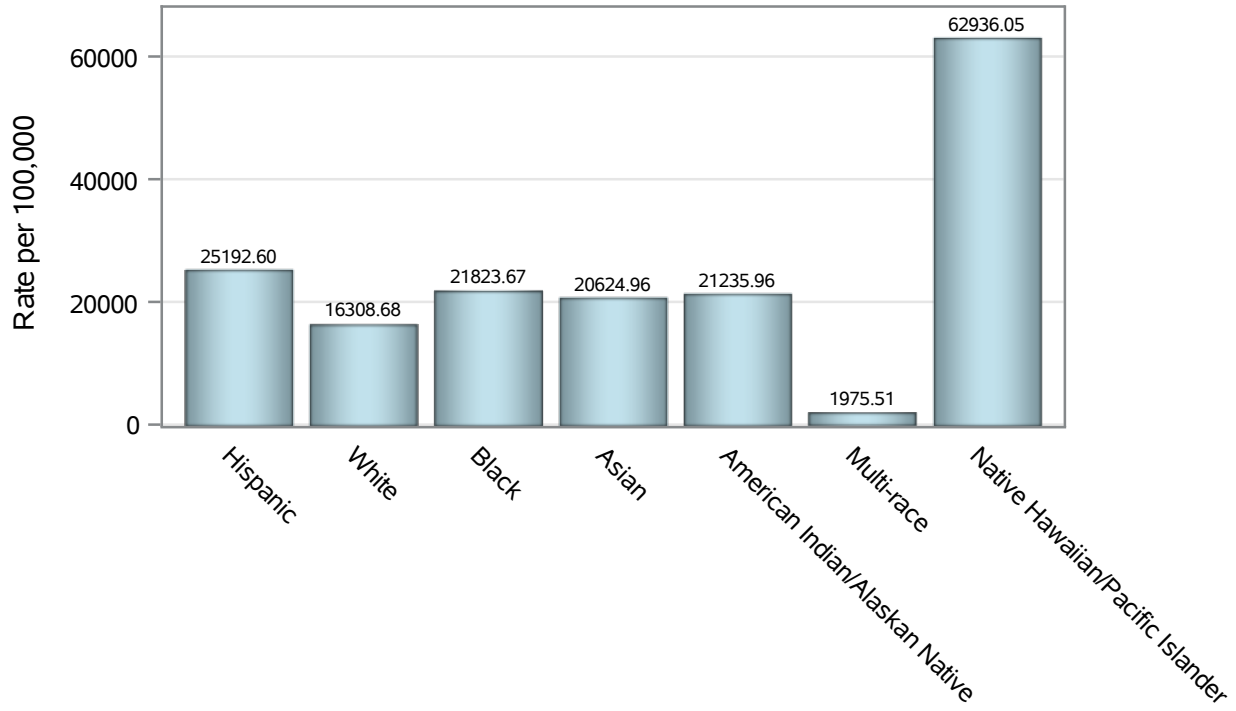
Note2: Rates for categories with fewer than 12 cases are suppressed due to high relative standard error.

Note3: Hospitalizations are regardless of deceased status; Deaths are regardless of hospitalization status

**Investigations are ongoing; data are subject to change.
Reporting through 20JUN2022**

North Las Vegas zip codes include 89030, 89031, 89032, 89033, 89036, 89081, 89084, 89085, 89086, 89087.

Case Race/Ethnicity Rates in North Las Vegas

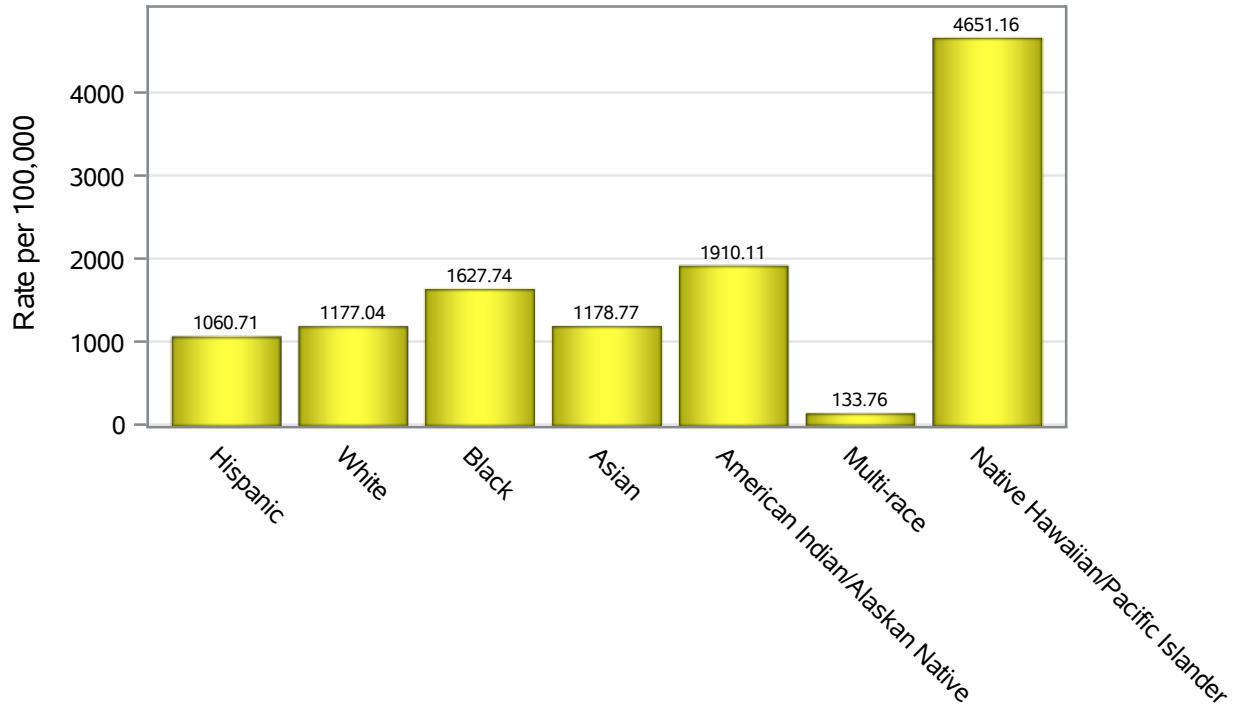


Investigations are ongoing; data are subject to change.

Reporting through 20JUN2022

North Las Vegas zip codes include 89030, 89031, 89032, 89033, 89036, 89081, 89084, 89085, 89086, 89087.

Hospitalization Race/Ethnicity Rates in North Las Vegas

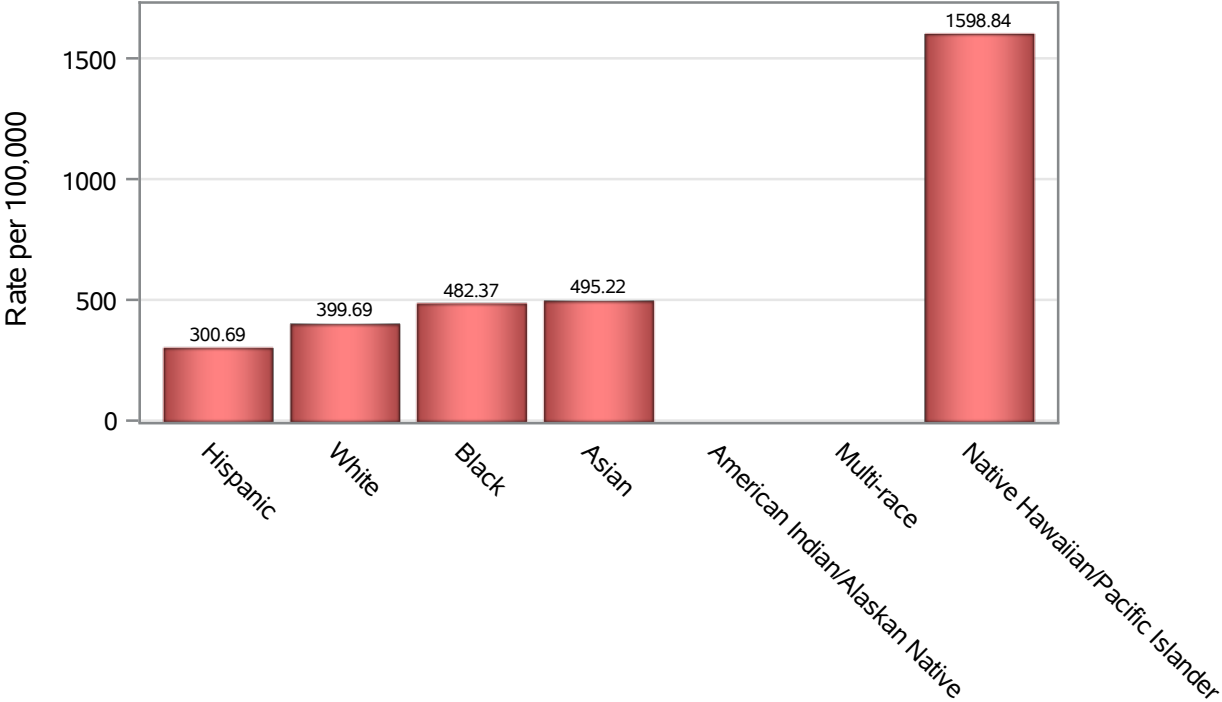


Investigations are ongoing; data are subject to change.

Reporting through 20JUN2022

North Las Vegas zip codes include 89030, 89031, 89032, 89033, 89036, 89081, 89084, 89085, 89086, 89087.

Death Race/Ethnicity Rates in North Las Vegas



Investigations are ongoing; data are subject to change.

Reporting through 20JUN2022

North Las Vegas zip codes include 89030, 89031, 89032, 89033, 89036, 89081, 89084, 89085, 89086, 89087.

Table 6: Race/Ethnicity and COVID19 in North Las Vegas

Case Status	Race Ethnicity Categories	N	%	Population	Rate per 100,000
Cases	Hispanic	24297	39.1	96,445	25193
	White	10364	16.7	63,549	16309
	Black	10270	16.5	47,059	21824
	Asian	2957	4.8	14,337	20625
	American Indian/Alaskan Native	189	0.3	890	21236
	Multi-race	192	0.3	9,719	1975.5
	Native Hawaiian/Pacific Islander	866	1.4	1,376	62936
	Unknown	12950	20.9	.	.
Hospitalizations	Hispanic	1023	34.6	96,445	1060.7
	White	748	25.3	63,549	1177.0
	Black	766	25.9	47,059	1627.7
	Asian	169	5.7	14,337	1178.8
	American Indian/Alaskan Native	17	0.6	890	1910.1
	Multi-race	13	0.4	9,719	133.76
	Native Hawaiian/Pacific Islander	64	2.2	1,376	4651.2
	Unknown	159	5.4	.	.
Deaths	Hispanic	290	33.1	96,445	300.69
	White	254	29.0	63,549	399.69
	Black	227	25.9	47,059	482.37
	Asian	71	8.1	14,337	495.22
	American Indian/Alaskan Native	6	0.7	890	.
	Multi-race	6	0.7	9,719	.
	Native Hawaiian/Pacific Islander	22	2.5	1,376	1598.8

Note1: Population data source for calculating rate estimates: U.S. Census Bureau, ACS 5-year estimate.

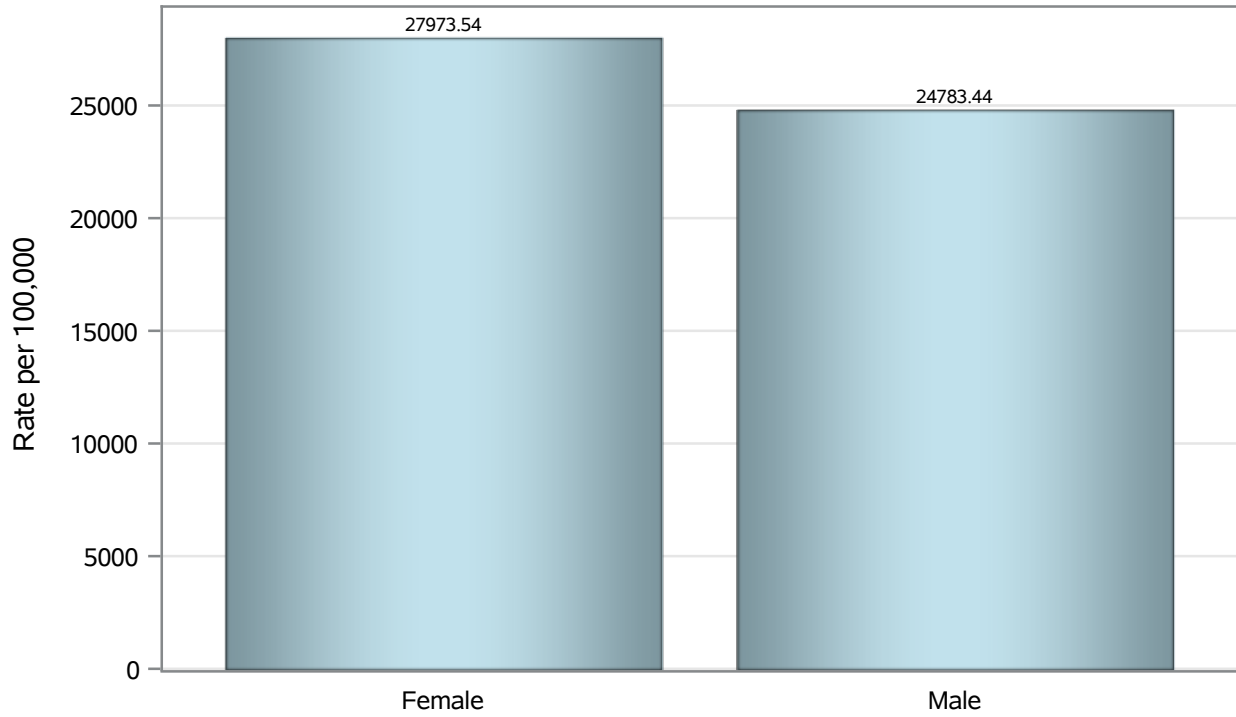
Note2: Rates for categories with fewer than 12 cases are suppressed due to high relative standard error.

Note3: Hospitalizations are regardless of deceased status; Deaths are regardless of hospitalization status

**Investigations are ongoing; data are subject to change.
Reporting through 20JUN2022**

North Las Vegas zip codes include 89030, 89031, 89032, 89033, 89036, 89081, 89084, 89085, 89086, 89087.

Case Birth Sex Rates in North Las Vegas

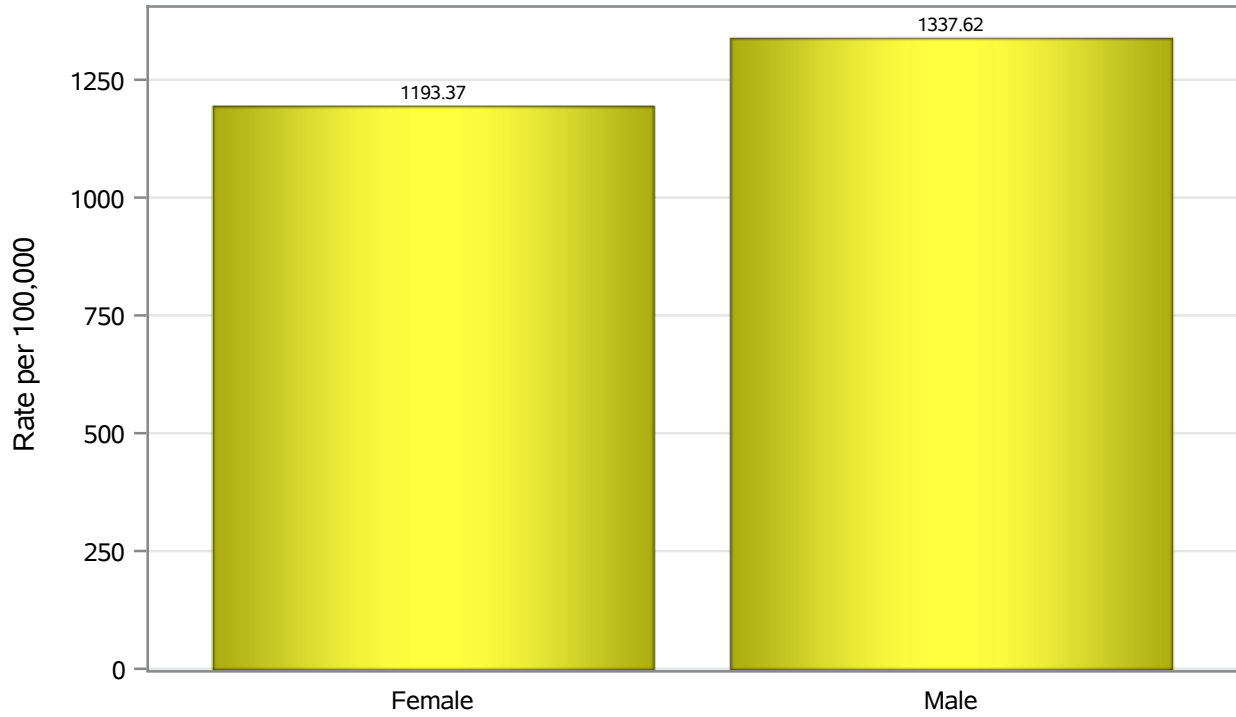


Investigations are ongoing; data are subject to change.

Reporting through 20JUN2022

North Las Vegas zip codes include 89030, 89031, 89032, 89033, 89036, 89081, 89084, 89085, 89086, 89087.

Hospitalization Birth Sex Rates in North Las Vegas

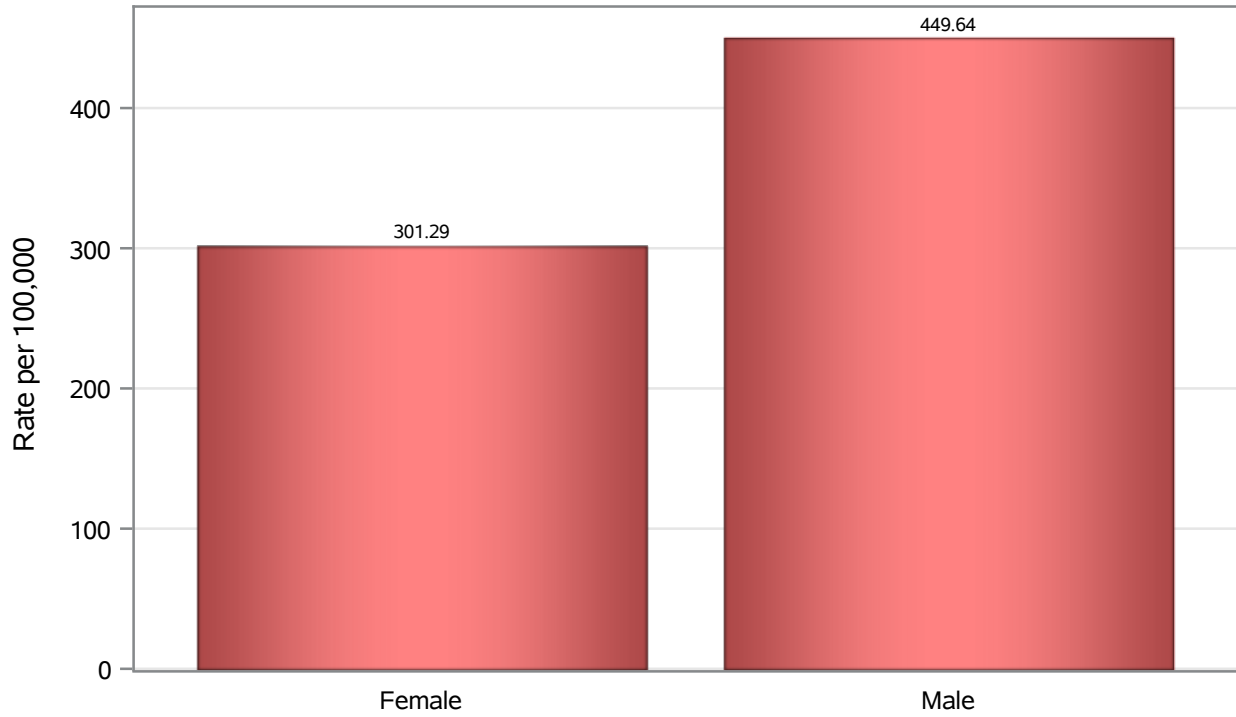


Investigations are ongoing; data are subject to change.

Reporting through 20JUN2022

North Las Vegas zip codes include 89030, 89031, 89032, 89033, 89036, 89081, 89084, 89085, 89086, 89087.

Death Birth Sex Rates in North Las Vegas



Investigations are ongoing; data are subject to change.

Reporting through 20JUN2022

North Las Vegas zip codes include 89030, 89031, 89032, 89033, 89036, 89081, 89084, 89085, 89086, 89087.

Table 7: Birth Sex and COVID19 in North Las Vegas

Case Status	Birth Sex Categories	N	%	Population	Rate per 100,000
Cases	Female	33239	53.5	118823	27974
	Male	28496	45.9	114980	24783
	Unknown	350	0.6	.	.
Hospitalizations	Female	1418	47.9	118823	1193.4
	Male	1538	52.0	114980	1337.6
	Unknown	3	0.1	.	.
Deaths	Female	358	40.9	118823	301.29
	Male	517	59.0	114980	449.64
	Unknown	1	0.1	.	.

Note1: Population data source for calculating rate estimates: U.S. Census Bureau, ACS 5-year estimate.

Note2: Rates for categories with fewer than 12 cases are suppressed due to high relative standard error.

Note3: Hospitalizations are regardless of deceased status; Deaths are regardless of hospitalization status

**Investigations are ongoing; data are subject to change.
Reporting through 20JUN2022**

North Las Vegas zip codes include 89030, 89031, 89032, 89033, 89036, 89081, 89084, 89085, 89086, 89087.