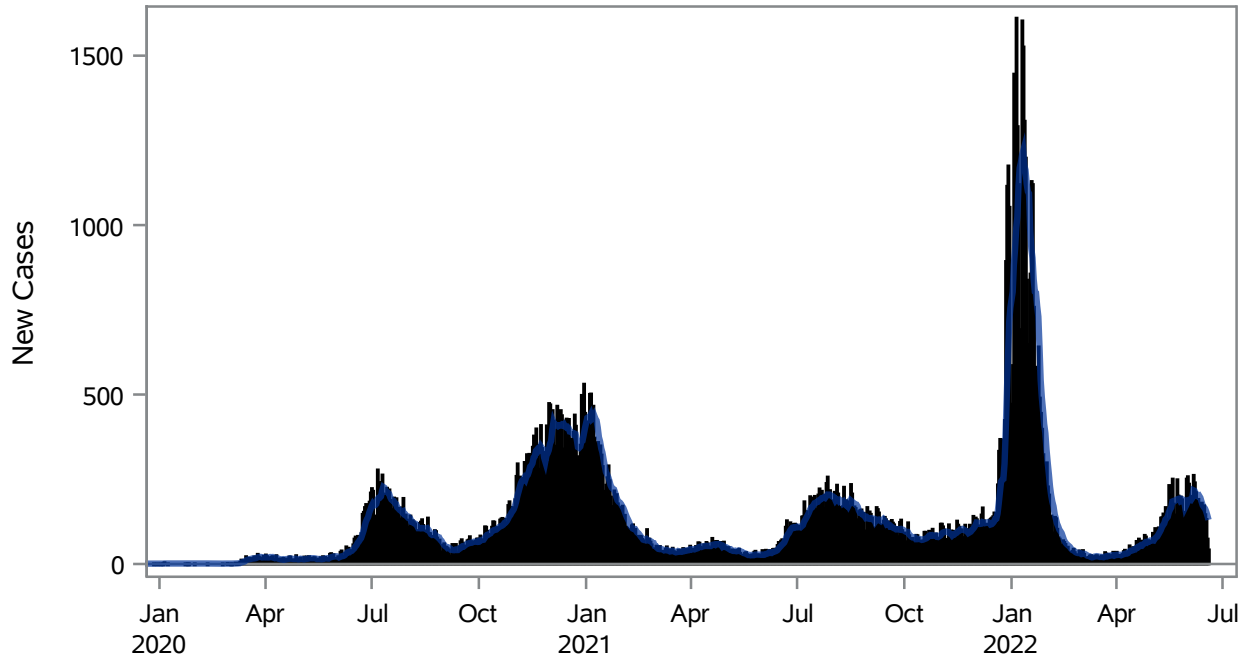


### COVID19 Cases for Henderson, 7-Day Moving Average



■ New Cases — 7-Day Moving Average

Investigations are ongoing; data are subject to change.

Reporting through 20JUN2022

Henderson zip codes include 89002, 89011, 89012, 89014, 89015, 89044, 89052, 89074, 89119, 89120, 89122, 89123, 89124, 89183.

**Table 1: New COVID19 Cases and 7-Day Moving Average in Henderson, Previous Two Weeks**

Date (Daily)	New Cases	7-Day Moving Average
07JUN2022	240	216.00
08JUN2022	211	209.29
09JUN2022	175	200.57
10JUN2022	191	199.29
11JUN2022	157	201.29
12JUN2022	133	195.57
13JUN2022	180	183.86
14JUN2022	165	173.14
15JUN2022	172	167.57
16JUN2022	146	163.43
17JUN2022	132	155.00
18JUN2022	74	143.14

---

Note1: Event Date is calculated as follows based on completed information:  
1) Disease onset date 2) Disease diagnosis date 3) Lab result collection date 4) Report date to SNHD.

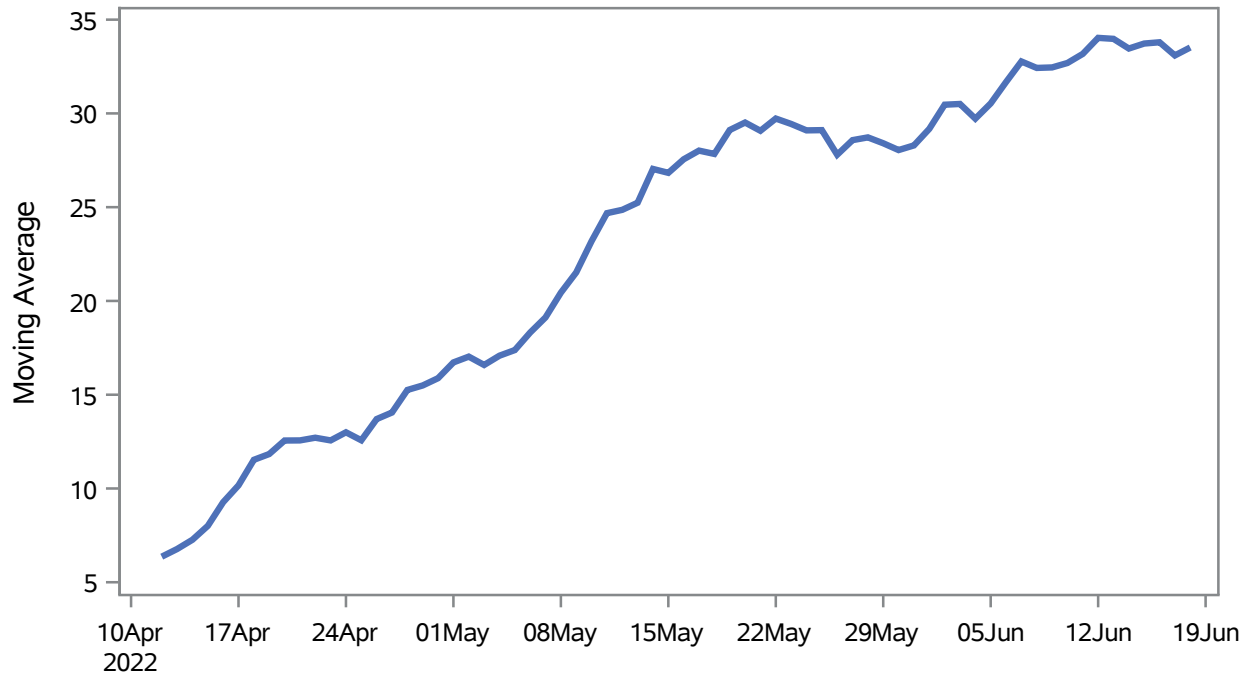
---

**Investigations are ongoing; data are subject to change.**

**Reporting through 20JUN2022**

**Henderson zip codes include 89002, 89011, 89012, 89014, 89015, 89044, 89052, 89074, 89119, 89120, 89122, 89123, 89124, 89183.**

### Percent of People Receiving COVID-19 Viral Tests Who Have Positive Results in Henderson



Investigations are ongoing; data are subject to change.

Reporting through 20JUN2022

Henderson zip codes include 89002, 89011, 89012, 89014, 89015, 89044, 89052, 89074, 89119, 89120, 89122, 89123, 89124, 89183.

**Table 2: Percent of People Receiving COVID-19 Viral Tests Who Have Positive Results in Henderson**

Collection Date	Positive	Negative	Equivocal	Total	% Positivity	7-Day Moving Average
04JUN2022	114	284	2	400	28.50	29.7
05JUN2022	130	230	1	361	36.01	30.5
06JUN2022	224	433	1	658	34.04	31.7
07JUN2022	208	355	1	564	36.88	32.8
08JUN2022	175	387	6	568	30.81	32.4
09JUN2022	157	375	7	539	29.13	32.5
10JUN2022	186	369	1	556	33.45	32.7
11JUN2022	119	253	1	373	31.90	33.2
12JUN2022	110	151	1	262	41.98	34.0
13JUN2022	200	392	2	594	33.67	34.0
14JUN2022	163	326	1	490	33.27	33.5
15JUN2022	165	340		505	32.67	33.7
16JUN2022	172	407	2	581	29.60	33.8
17JUN2022	131	328		459	28.54	33.1
18JUN2022	106	198		304	34.87	33.5

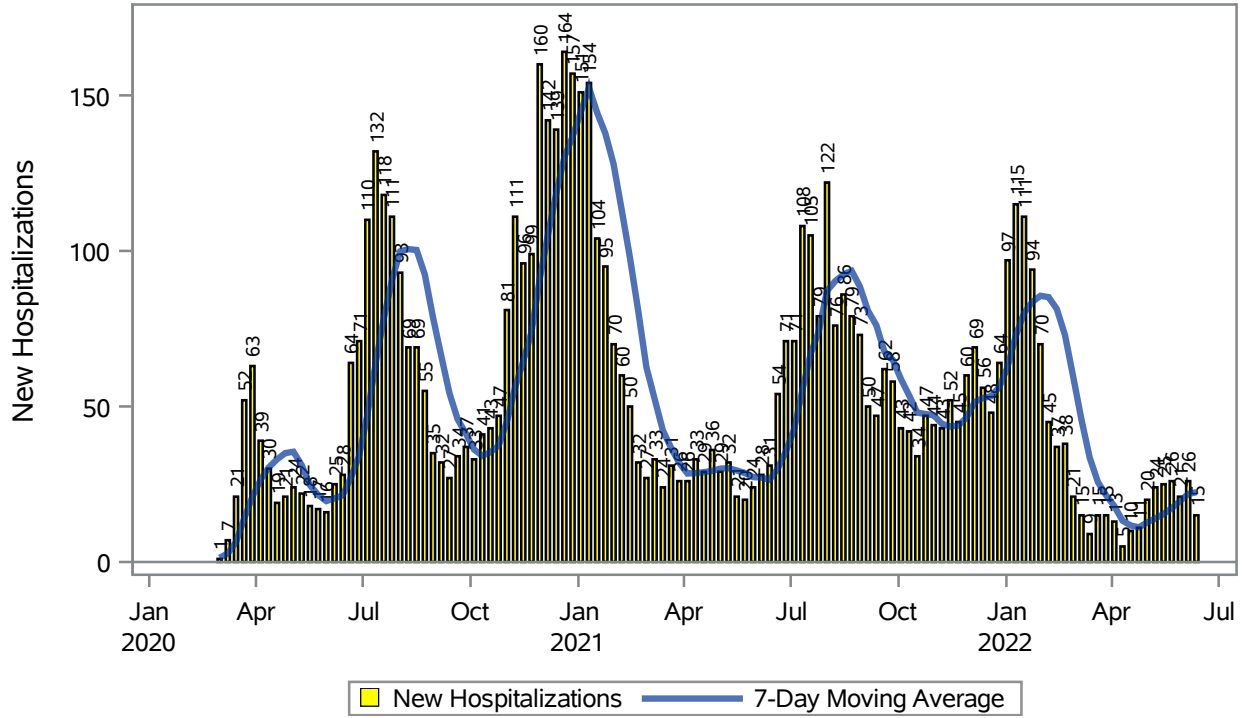
Note: Testing Data includes a 3 day delay

**Investigations are ongoing; data are subject to change.**

**Reporting through 20JUN2022**

**Henderson zip codes include 89002, 89011, 89012, 89014, 89015, 89044, 89052, 89074, 89119, 89120, 89122, 89123, 89124, 89183.**

### COVID19 Hospitalizations for Henderson, 7-Day Moving Average



Investigations are ongoing; data are subject to change.

Reporting through 20JUN2022

Henderson zip codes include 89002, 89011, 89012, 89014, 89015, 89044, 89052, 89074, 89119, 89120, 89122, 89123, 89124, 89183.

**Table 3: New COVID19-Related Hospitalizations and 7-Day Moving Average in Henderson, previous month**

Week	Hospitalizations	7-Day Moving Average
22MAY2022	26	17.3
29MAY2022	21	19.6
05JUN2022	26	21.9
12JUN2022	15	22.4

---

Note1: Admission Date is calculated as follows based on completed information:  
A) COVID19 Case is hospitalized B) COVID19 Case has a hospital admission date.

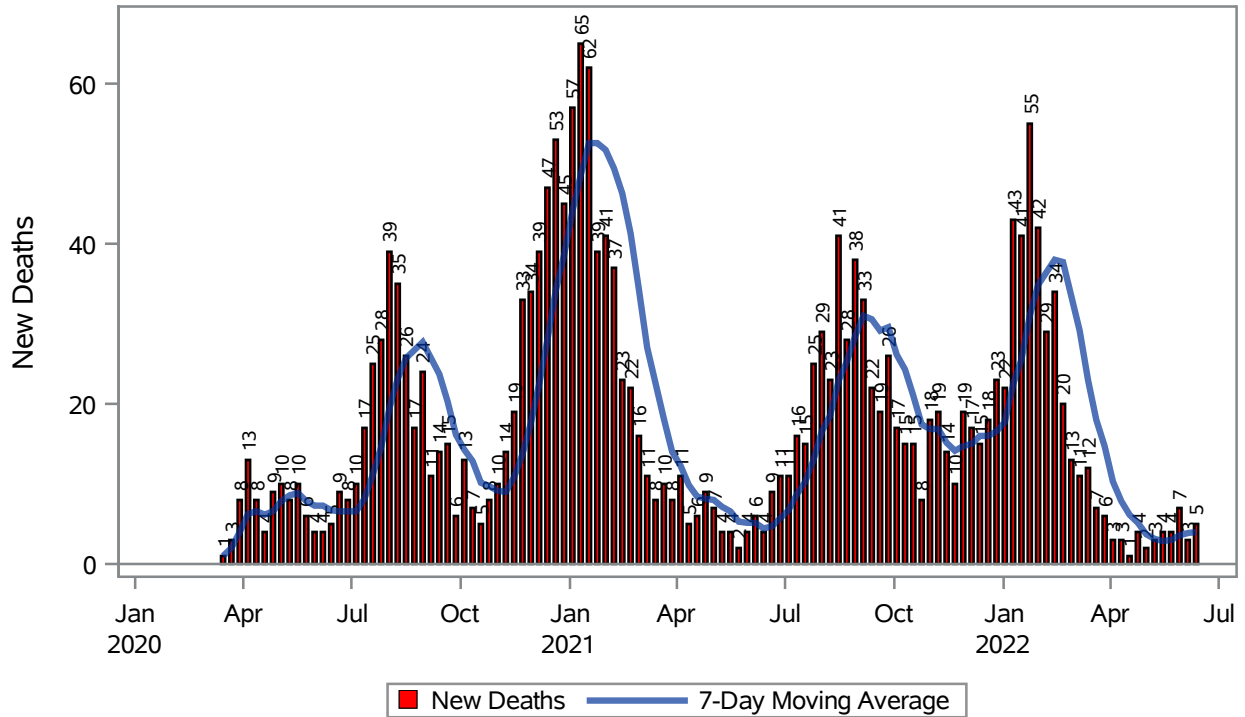
If admission date is missing, then the following is substituted temporarily, in order:  
1) Disease onset date 2) Disease diagnosis date 3) Lab result collection date 4) Report date to SNHD.

---

**Investigations are ongoing; data are subject to change.  
Reporting through 20JUN2022**

**Henderson zip codes include 89002, 89011, 89012, 89014, 89015, 89044, 89052, 89074, 89119, 89120, 89122, 89123, 89124, 89183.**

### COVID19 Deaths for Henderson, 7-Day Moving Average



Investigations are ongoing; data are subject to change.

Reporting through 20JUN2022

Henderson zip codes include 89002, 89011, 89012, 89014, 89015, 89044, 89052, 89074, 89119, 89120, 89122, 89123, 89124, 89183.

**Table 4: New COVID19-Related Deaths and 7-Day Moving Average in Henderson, Previous Month**

Week	Deaths	7-Day Moving Average
22MAY2022	4	3.00
29MAY2022	7	3.57
05JUN2022	3	3.86
12JUN2022	5	4.00

---

Note1: Date of Death is calculated as follows based on completed information:  
A) COVID19 Case is reported as deceased B) COVID19 Case has a reported date of death.

If date of death is missing, then the following is substituted temporarily, in order:  
1) Disease onset date 2) Disease diagnosis date  
3) Lab result collection date 4) Report date to SNHD.

---

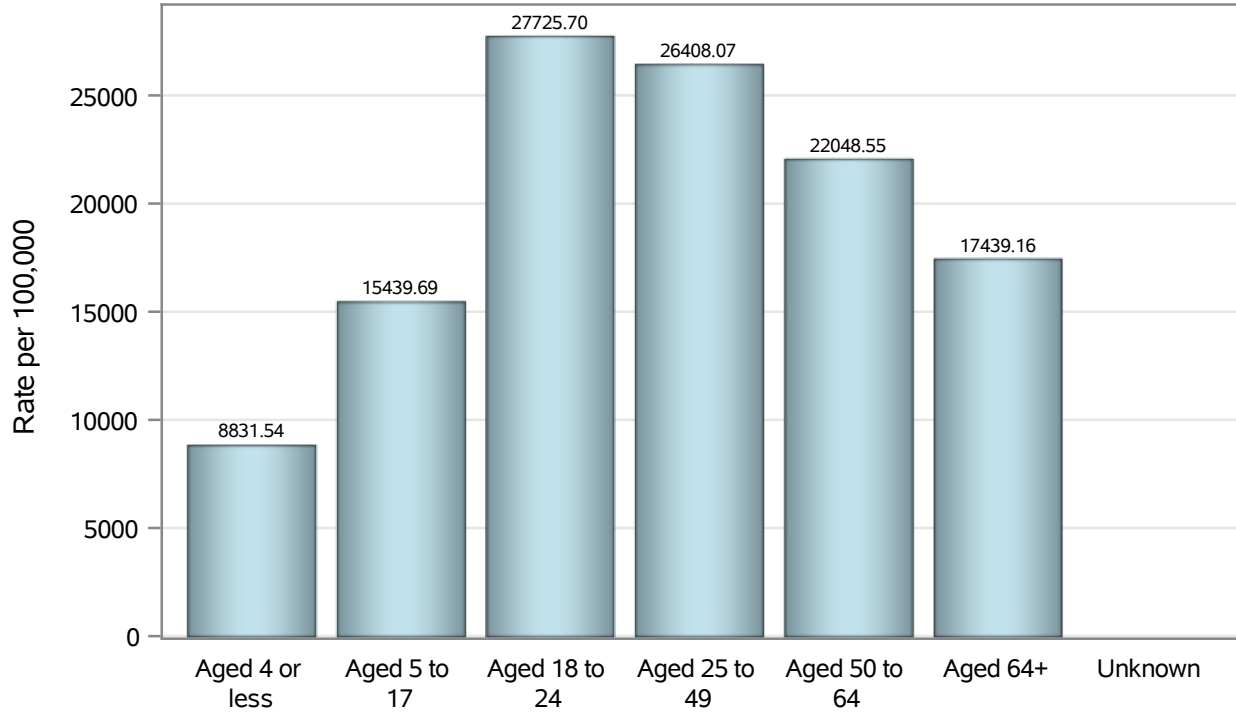
**Investigations are ongoing; data are subject to change.**

**Reporting through 20JUN2022**

**Henderson zip codes include 89002, 89011, 89012, 89014, 89015, 89044, 89052, 89074, 89119, 89120, 89122, 89123, 89124, 89183.**



### Case Age Rates in Henderson

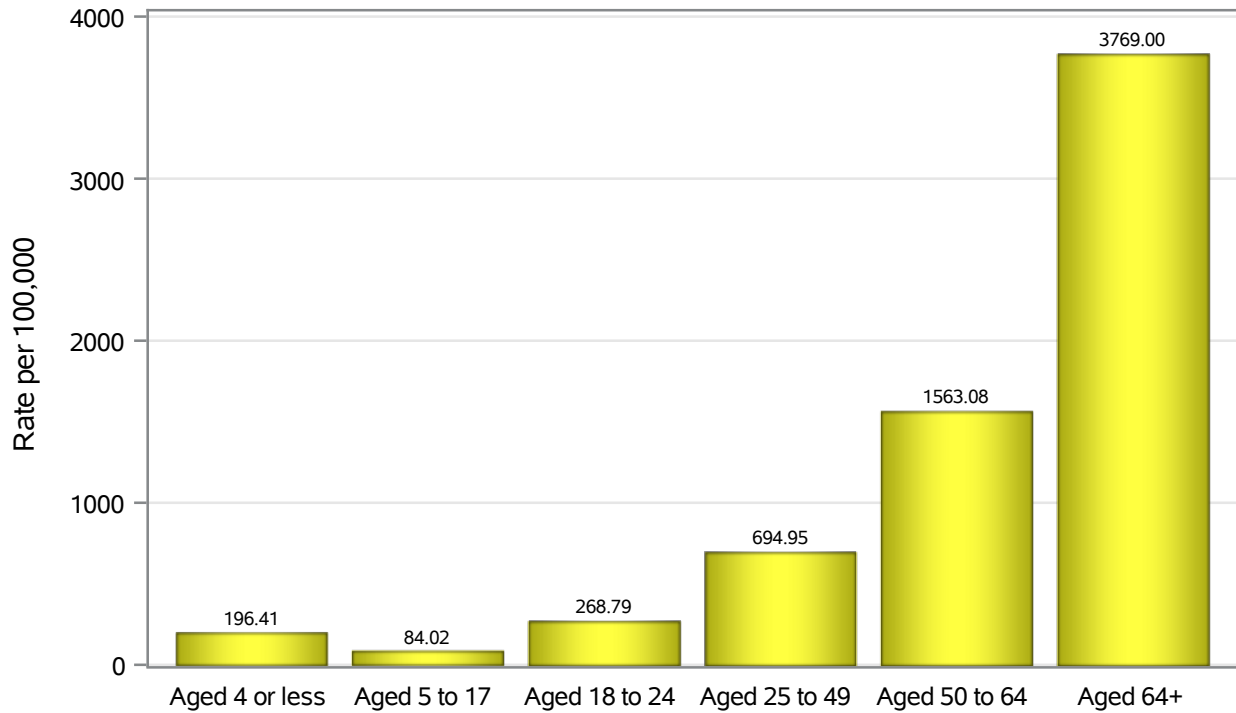


Investigations are ongoing; data are subject to change.

Reporting through 20JUN2022

Henderson zip codes include 89002, 89011, 89012, 89014, 89015, 89044, 89052, 89074, 89119, 89120, 89122, 89123, 89124, 89183.

### Hospitalization Age Rates in Henderson

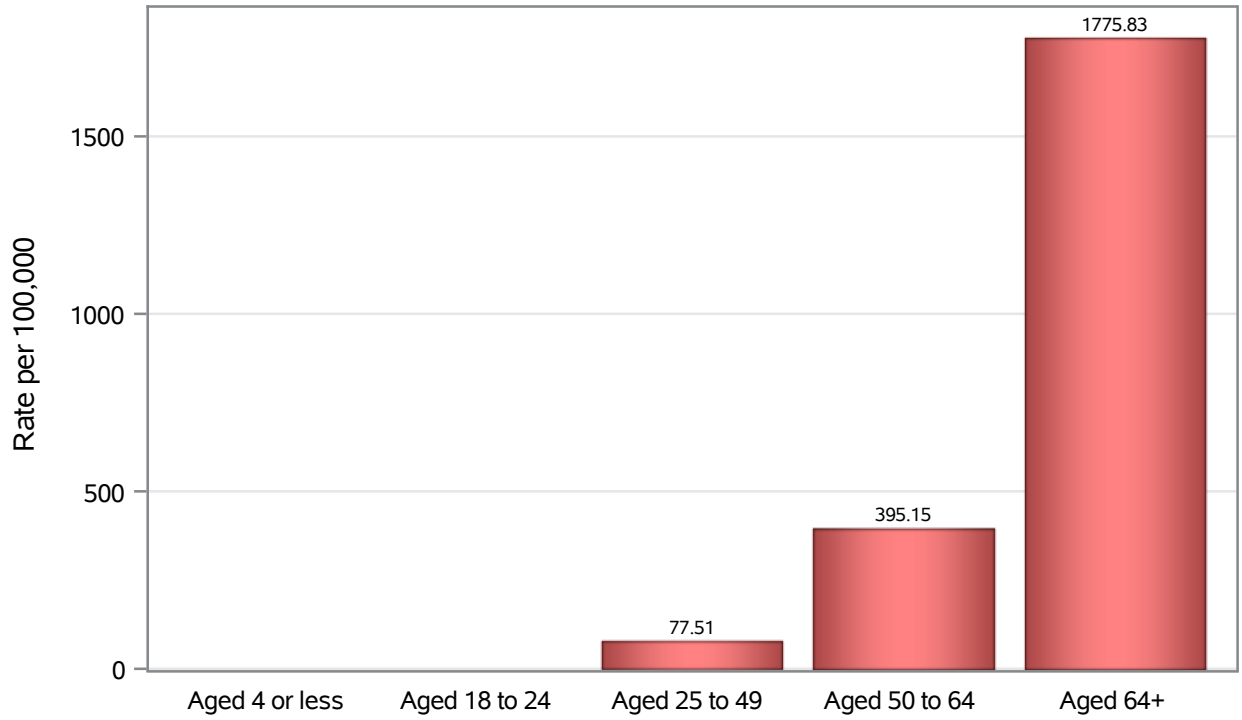


Investigations are ongoing; data are subject to change.

Reporting through 20JUN2022

Henderson zip codes include 89002, 89011, 89012, 89014, 89015, 89044, 89052, 89074, 89119, 89120, 89122, 89123, 89124, 89183.

### Death Age Rates in Henderson



Investigations are ongoing; data are subject to change.

Reporting through 20JUN2022

Henderson zip codes include 89002, 89011, 89012, 89014, 89015, 89044, 89052, 89074, 89119, 89120, 89122, 89123, 89124, 89183.

**Table 5: Age and COVID19 in Henderson**

Case Status	Age Categories	N	%	Population	Rate per 100,000
Cases	Aged 4 or less	2563	2.2	29,021	8831.5
	Aged 5 to 17	12680	11.1	82,126	15440
	Aged 18 to 24	12275	10.7	44,273	27726
	Aged 25 to 49	49400	43.1	187064	26408
	Aged 50 to 64	22654	19.8	102746	22049
	Aged 64+	15084	13.2	86,495	17439
	Unknown	25	0.0	.	.
Hospitalizations	Aged 4 or less	57	0.9	29,021	196.41
	Aged 5 to 17	69	1.1	82,126	84.02
	Aged 18 to 24	119	1.9	44,273	268.79
	Aged 25 to 49	1300	20.3	187064	694.95
	Aged 50 to 64	1606	25.1	102746	1563.1
	Aged 64+	3260	50.9	86,495	3769.0
	Deaths	Aged 4 or less	1	0.0	29,021
Aged 18 to 24		3	0.1	44,273	.
Aged 25 to 49		145	6.9	187064	77.51
Aged 50 to 64		406	19.4	102746	395.15
Aged 64+		1536	73.5	86,495	1775.8

Note1: Population data source for calculating rate estimates: U.S. Census Bureau, ACS 5-year estimate.

Note2: Rates for categories with fewer than 12 cases are suppressed due to high relative standard error.

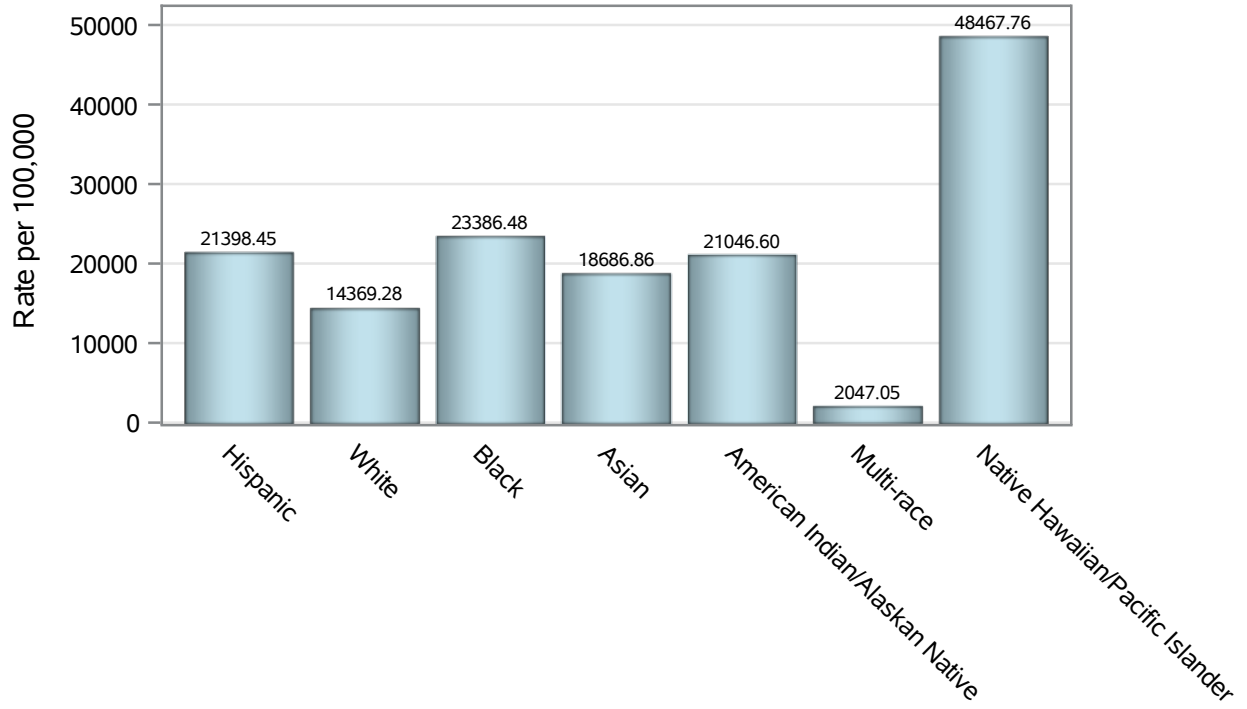
Note3: Hospitalizations are regardless of deceased status; Deaths are regardless of hospitalization status

**Investigations are ongoing; data are subject to change.**

**Reporting through 20JUN2022**

**Henderson zip codes include 89002, 89011, 89012, 89014, 89015, 89044, 89052, 89074, 89119, 89120, 89122, 89123, 89124, 89183.**

### Case Race/Ethnicity Rates in Henderson

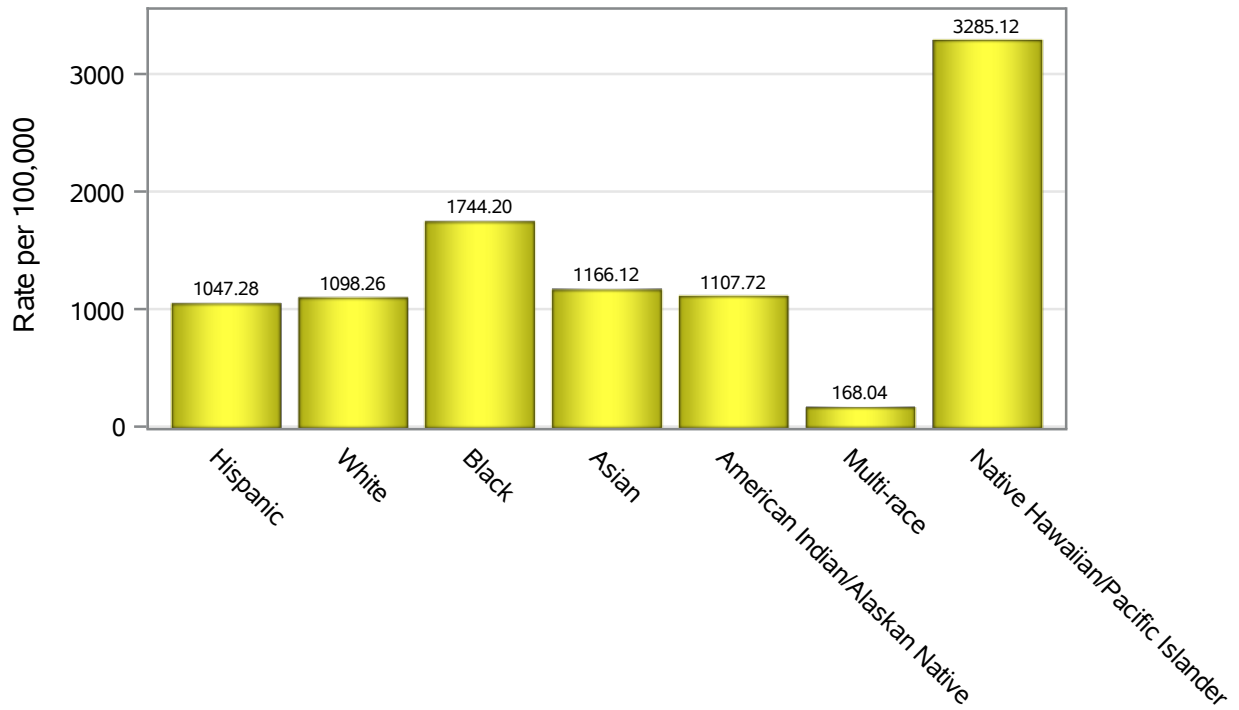


Investigations are ongoing; data are subject to change.

Reporting through 20JUN2022

Henderson zip codes include 89002, 89011, 89012, 89014, 89015, 89044, 89052, 89074, 89119, 89120, 89122, 89123, 89124, 89183.

### Hospitalization Race/Ethnicity Rates in Henderson

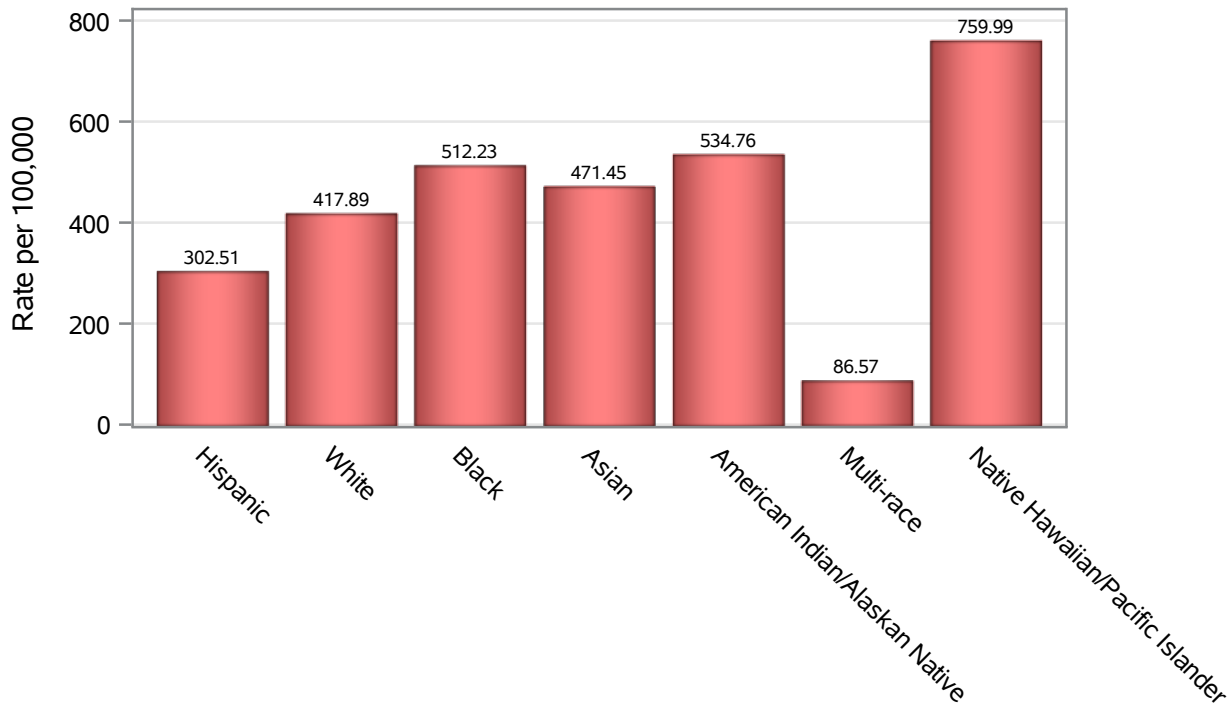


Investigations are ongoing; data are subject to change.

Reporting through 20JUN2022

Henderson zip codes include 89002, 89011, 89012, 89014, 89015, 89044, 89052, 89074, 89119, 89120, 89122, 89123, 89124, 89183.

### Death Race/Ethnicity Rates in Henderson



Investigations are ongoing; data are subject to change.

Reporting through 20JUN2022

Henderson zip codes include 89002, 89011, 89012, 89014, 89015, 89044, 89052, 89074, 89119, 89120, 89122, 89123, 89124, 89183.

**Table 6: Race/Ethnicity and COVID19 in Henderson**

Case Status	Race Ethnicity Categories	N	%	Population	Rate per 100,000
Cases	Hispanic	26031	22.7	121649	21398
	White	41881	36.5	291462	14369
	Black	8903	7.8	38,069	23386
	Asian	9711	8.5	51,967	18687
	American Indian/Alaskan Native	551	0.5	2,618	21047
	Multi-race	402	0.4	19,638	2047.1
	Native Hawaiian/Pacific Islander	1977	1.7	4,079	48468
	Unknown	25225	22.0	.	.
Hospitalizations	Hispanic	1274	19.9	121649	1047.3
	White	3201	49.9	291462	1098.3
	Black	664	10.4	38,069	1744.2
	Asian	606	9.5	51,967	1166.1
	American Indian/Alaskan Native	29	0.5	2,618	1107.7
	Multi-race	33	0.5	19,638	168.04
	Native Hawaiian/Pacific Islander	134	2.1	4,079	3285.1
	Unknown	470	7.3	.	.
Deaths	Hispanic	368	17.6	121649	302.51
	White	1218	58.2	291462	417.89
	Black	195	9.3	38,069	512.23
	Asian	245	11.7	51,967	471.45
	American Indian/Alaskan Native	14	0.7	2,618	534.76
	Multi-race	17	0.8	19,638	86.57
	Native Hawaiian/Pacific Islander	31	1.5	4,079	759.99
	Unknown	3	0.1	.	.

Note1: Population data source for calculating rate estimates: U.S. Census Bureau, ACS 5-year estimate.

Note2: Rates for categories with fewer than 12 cases are suppressed due to high relative standard error.

Note3: Hospitalizations are regardless of deceased status; Deaths are regardless of hospitalization status

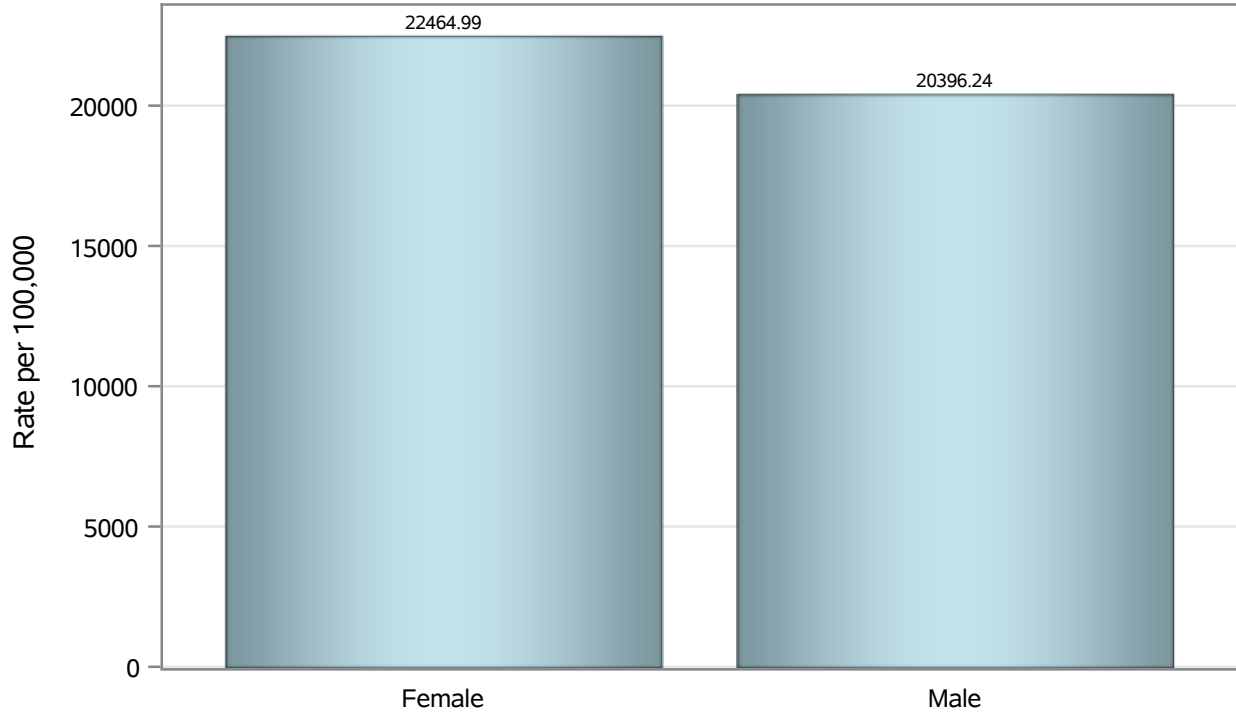
**Investigations are ongoing; data are subject to change.**

**Reporting through 20JUN2022**

**Henderson zip codes include 89002, 89011, 89012, 89014, 89015, 89044, 89052, 89074, 89119, 89120, 89122, 89123, 89124, 89183.**



### Case Birth Sex Rates in Henderson

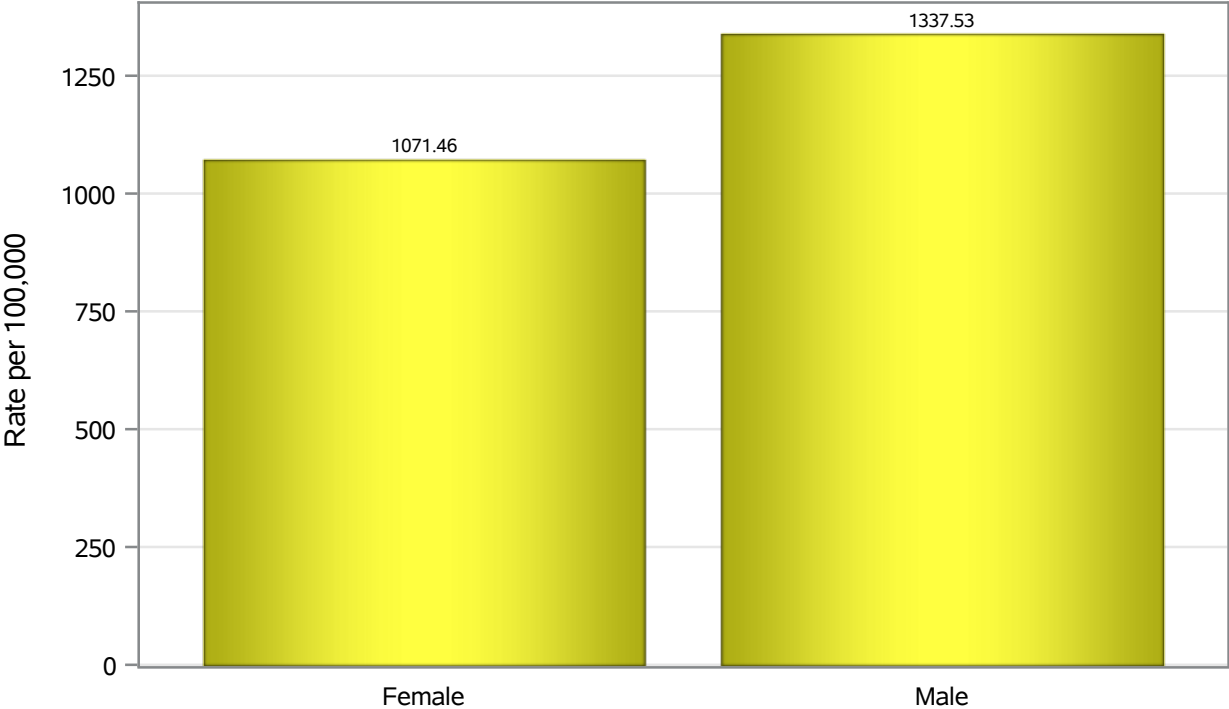


Investigations are ongoing; data are subject to change.

Reporting through 20JUN2022

Henderson zip codes include 89002, 89011, 89012, 89014, 89015, 89044, 89052, 89074, 89119, 89120, 89122, 89123, 89124, 89183.

### Hospitalization Birth Sex Rates in Henderson

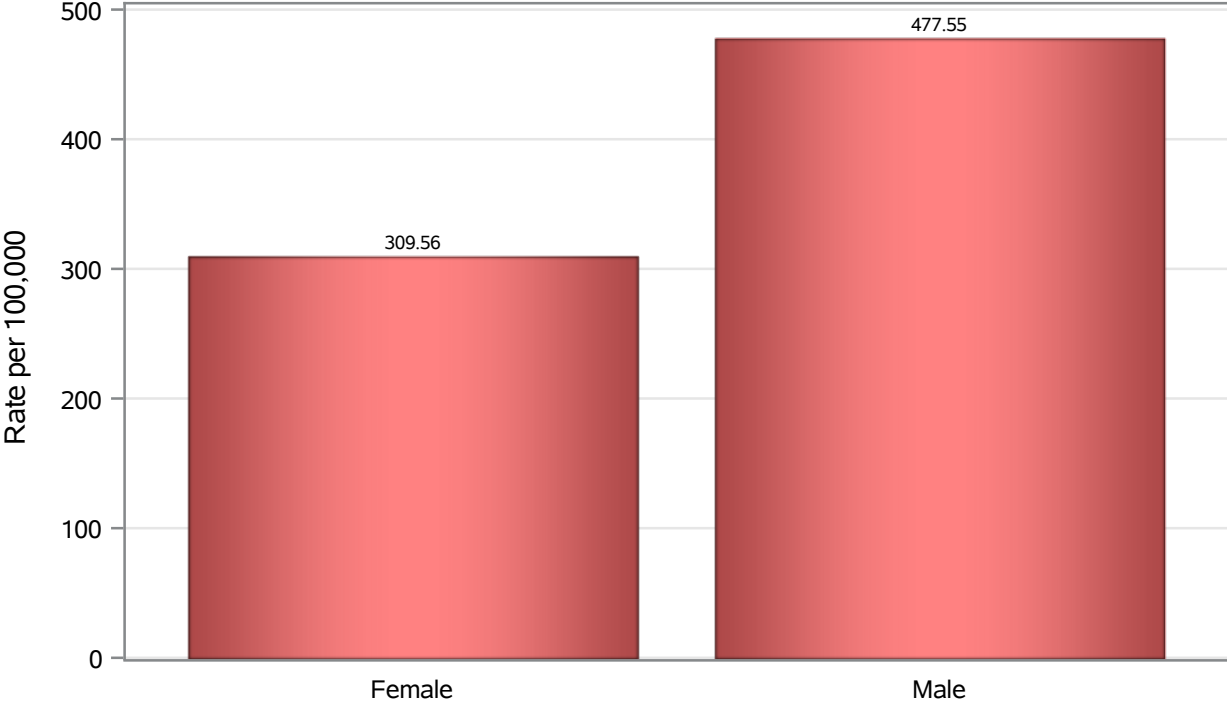


Investigations are ongoing; data are subject to change.

Reporting through 20JUN2022

Henderson zip codes include 89002, 89011, 89012, 89014, 89015, 89044, 89052, 89074, 89119, 89120, 89122, 89123, 89124, 89183.

**Death Birth Sex Rates in Henderson**



Investigations are ongoing; data are subject to change.  
Reporting through 20JUN2022

Henderson zip codes include 89002, 89011, 89012, 89014, 89015, 89044, 89052, 89074, 89119, 89120, 89122, 89123, 89124, 89183.

**Table 7: Birth Sex and COVID19 in Henderson**

Case Status	Birth Sex Categories	N	%	Population	Rate per 100,000
Cases	Female	59944	52.3	266833	22465
	Male	54028	47.1	264892	20396
	Unknown	709	0.6	.	.
Hospitalizations	Female	2859	44.6	266833	1071.5
	Male	3543	55.3	264892	1337.5
	Unknown	9	0.1	.	.
Deaths	Female	826	39.5	266833	309.56
	Male	1265	60.5	264892	477.55

Note1: Population data source for calculating rate estimates: U.S. Census Bureau, ACS 5-year estimate.

Note2: Rates for categories with fewer than 12 cases are suppressed due to high relative standard error.

Note3: Hospitalizations are regardless of deceased status; Deaths are regardless of hospitalization status

**Investigations are ongoing; data are subject to change.**

**Reporting through 20JUN2022**

**Henderson zip codes include 89002, 89011, 89012, 89014, 89015, 89044, 89052, 89074, 89119, 89120, 89122, 89123, 89124, 89183.**