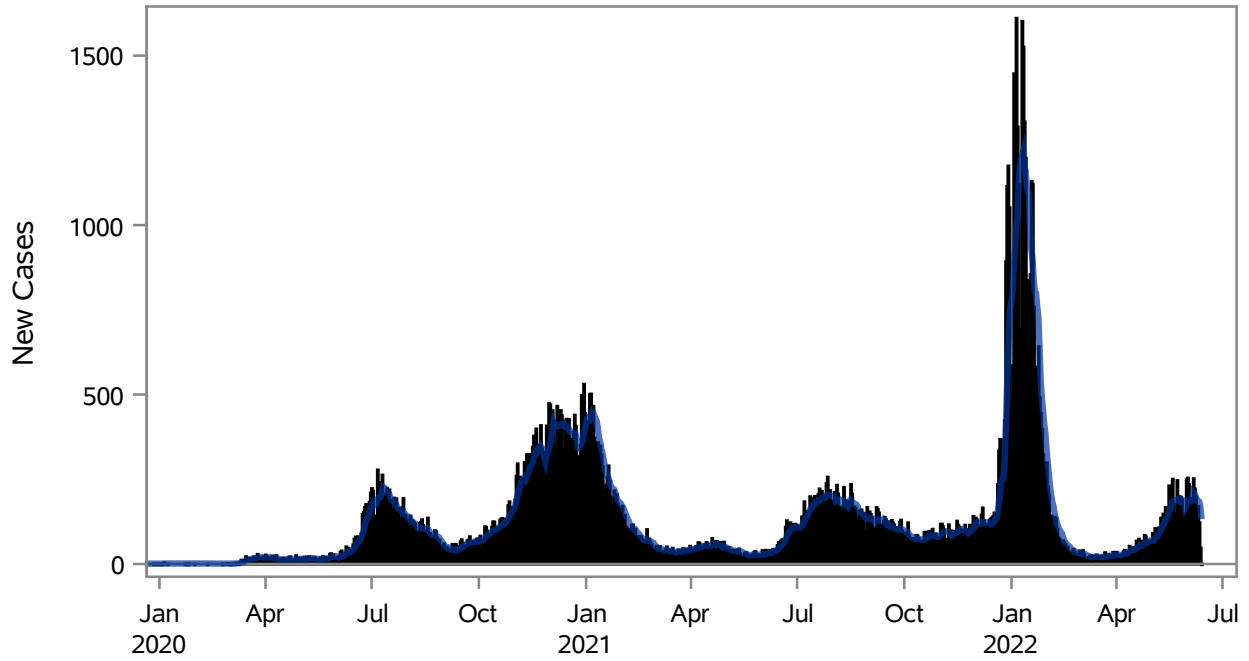


COVID19 Cases for Henderson, 7-Day Moving Average



■ New Cases — 7-Day Moving Average

Investigations are ongoing; data are subject to change.

Reporting through 13JUN2022

Henderson zip codes include 89002, 89011, 89012, 89014, 89015, 89044, 89052, 89074, 89119, 89120, 89122, 89123, 89124, 89183.

Table 1: New COVID19 Cases and 7-Day Moving Average in Henderson, Previous Two Weeks

Date (Daily)	New Cases	7-Day Moving Average
31MAY2022	249	173.14
01JUN2022	254	181.71
02JUN2022	235	187.00
03JUN2022	194	187.57
04JUN2022	138	186.00
05JUN2022	157	189.29
06JUN2022	252	211.29
07JUN2022	222	207.43
08JUN2022	198	199.43
09JUN2022	167	189.71
10JUN2022	170	186.29
11JUN2022	122	184.00

Note1: Event Date is calculated as follows based on completed information:

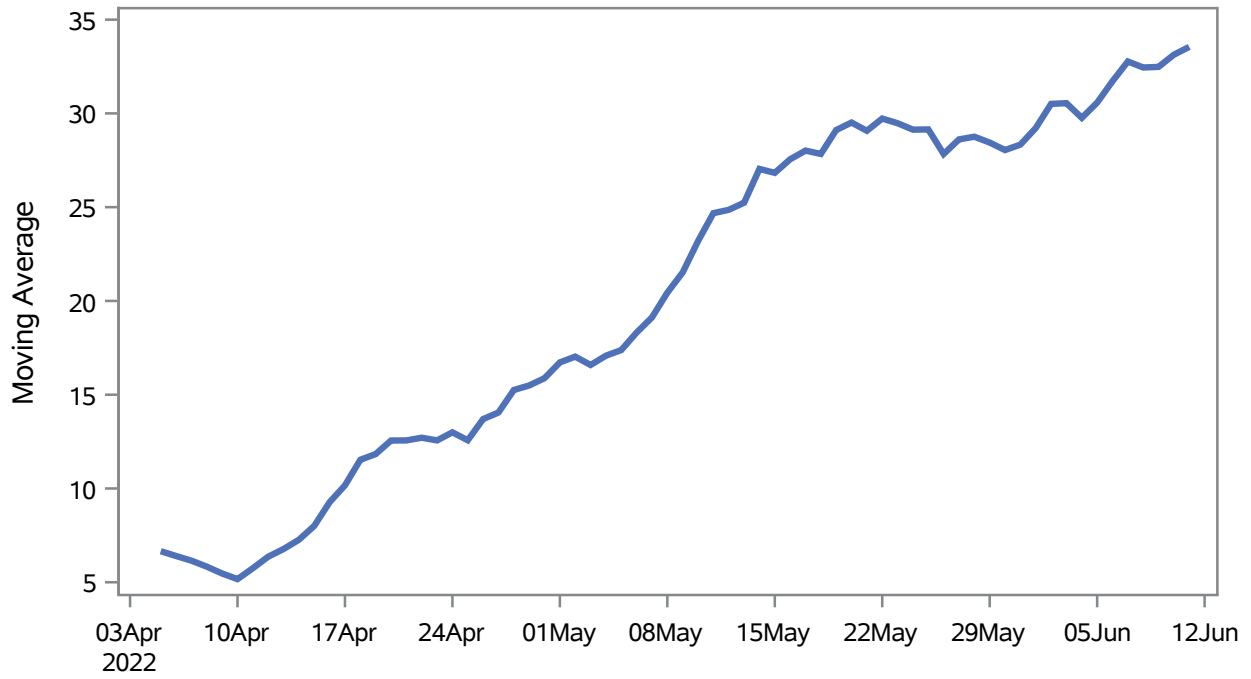
1) Disease onset date 2) Disease diagnosis date 3) Lab result collection date 4) Report date to SNHD.

Investigations are ongoing; data are subject to change.

Reporting through 13JUN2022

Henderson zip codes include 89002, 89011, 89012, 89014, 89015, 89044, 89052, 89074, 89119, 89120, 89122, 89123, 89124, 89183.

Percent of People Receiving COVID-19 Viral Tests Who Have Positive Results in Henderson



Investigations are ongoing; data are subject to change.

Reporting through 13JUN2022

Henderson zip codes include 89002, 89011, 89012, 89014, 89015, 89044, 89052, 89074, 89119, 89120, 89122, 89123, 89124, 89183.

Table 2: Percent of People Receiving COVID-19 Viral Tests Who Have Positive Results in Henderson

Collection Date	Positive	Negative	Equivocal	Total	% Positivity	7-Day Moving Average
28MAY2022	121	235		356	33.99	28.8
29MAY2022	111	255		366	30.33	28.4
30MAY2022	62	176		238	26.05	28.0
31MAY2022	249	591	4	844	29.50	28.3
01JUN2022	209	417	3	629	33.23	29.2
02JUN2022	195	476	3	674	28.93	30.5
03JUN2022	173	371		544	31.80	30.5
04JUN2022	114	284	2	400	28.50	29.8
05JUN2022	130	230	1	361	36.01	30.6
06JUN2022	224	433	1	658	34.04	31.7
07JUN2022	208	355	1	564	36.88	32.8
08JUN2022	175	384	6	565	30.97	32.4
09JUN2022	156	372	7	535	29.16	32.5
10JUN2022	180	314	1	495	36.36	33.1
11JUN2022	108	235	1	344	31.40	33.5

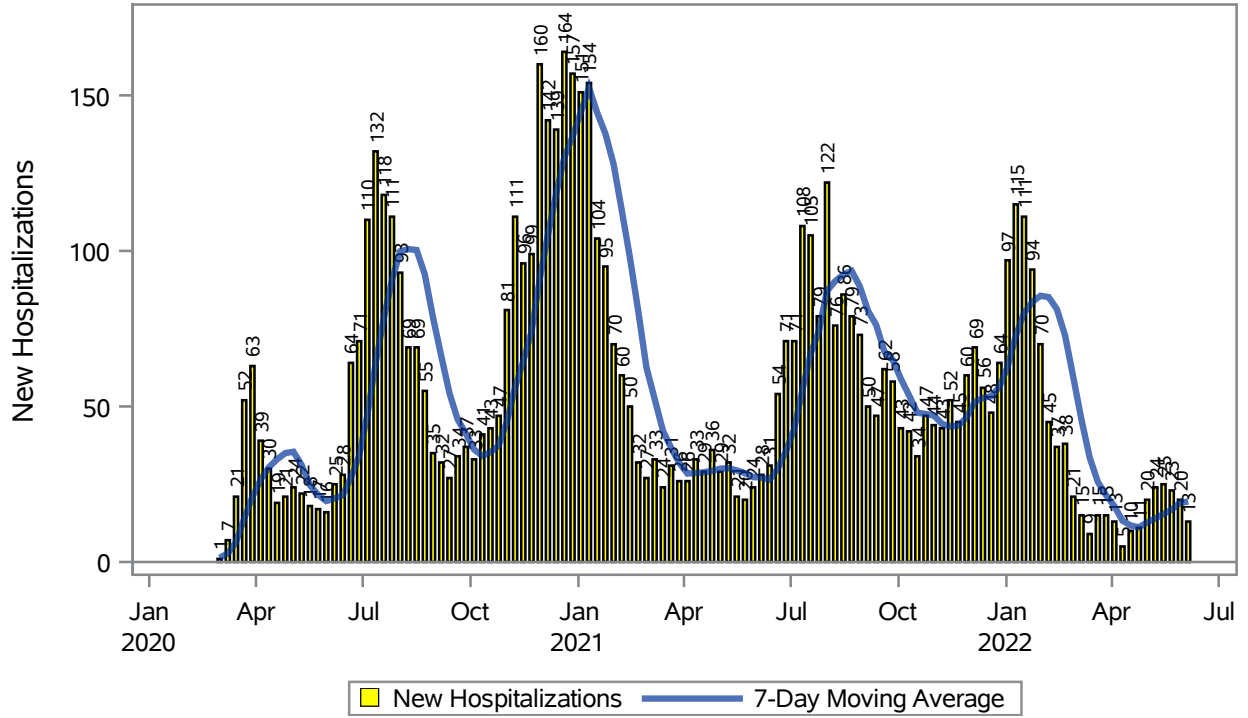
Note: Testing Data includes a 3 day delay

Investigations are ongoing; data are subject to change.

Reporting through 13JUN2022

Henderson zip codes include 89002, 89011, 89012, 89014, 89015, 89044, 89052, 89074, 89119, 89120, 89122, 89123, 89124, 89183.

COVID19 Hospitalizations for Henderson, 7-Day Moving Average



Investigations are ongoing; data are subject to change.

Reporting through 13JUN2022

Henderson zip codes include 89002, 89011, 89012, 89014, 89015, 89044, 89052, 89074, 89119, 89120, 89122, 89123, 89124, 89183.

Table 3: New COVID19-Related Hospitalizations and 7-Day Moving Average in Henderson, previous month

Week	Hospitalizations	7-Day Moving Average
15MAY2022	25	15.4
22MAY2022	23	16.9
29MAY2022	20	19.0
05JUN2022	13	19.4

Note1: Admission Date is calculated as follows based on completed information:
A) COVID19 Case is hospitalized B) COVID19 Case has a hospital admission date.

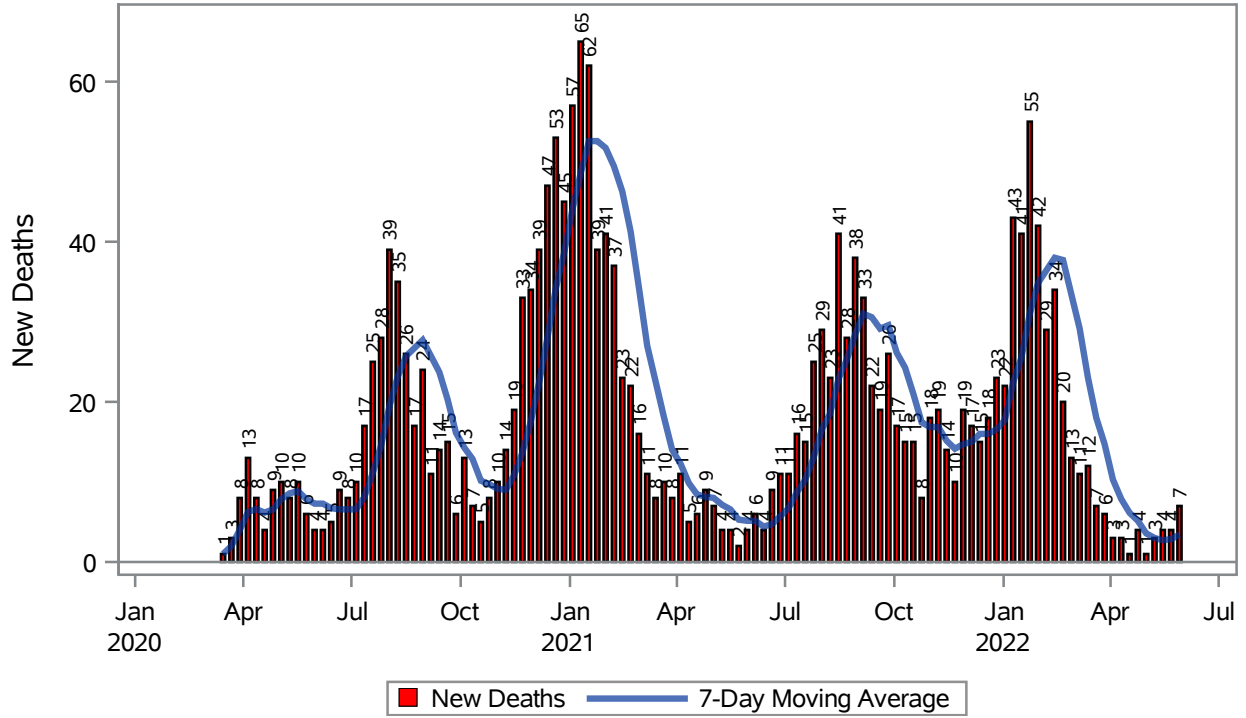
If admission date is missing, then the following is substituted temporarily, in order:
1) Disease onset date 2) Disease diagnosis date 3) Lab result collection date 4) Report date to SNHD.

Investigations are ongoing; data are subject to change.

Reporting through 13JUN2022

Henderson zip codes include 89002, 89011, 89012, 89014, 89015, 89044, 89052, 89074, 89119, 89120, 89122, 89123, 89124, 89183.

COVID19 Deaths for Henderson, 7-Day Moving Average



Investigations are ongoing; data are subject to change.

Reporting through 13JUN2022

Henderson zip codes include 89002, 89011, 89012, 89014, 89015, 89044, 89052, 89074, 89119, 89120, 89122, 89123, 89124, 89183.

Table 4: New COVID19-Related Deaths and 7-Day Moving Average in Henderson, Previous Month

Week	Deaths	7-Day Moving Average
15MAY2022	4	2.71
22MAY2022	4	2.86
29MAY2022	7	3.43

Note1: Date of Death is calculated as follows based on completed information:
A) COVID19 Case is reported as deceased B) COVID19 Case has a reported date of death.

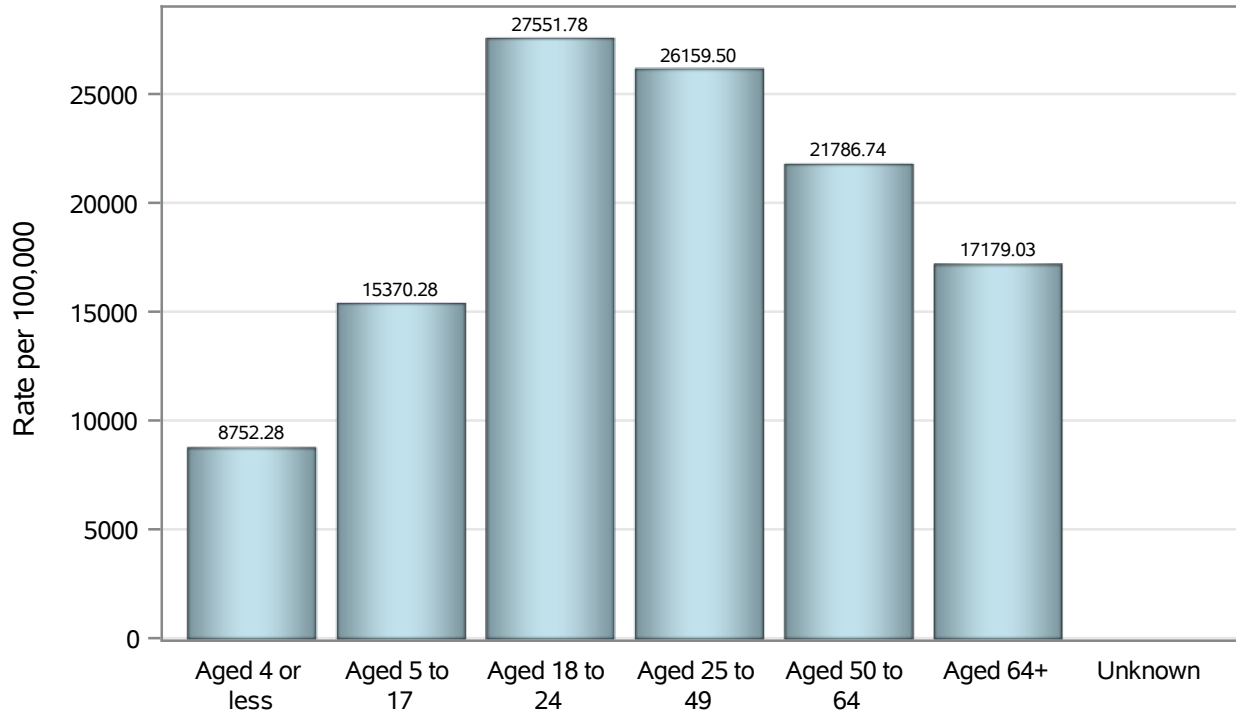
If date of death is missing, then the following is substituted temporarily, in order:
1) Disease onset date 2) Disease diagnosis date
3) Lab result collection date 4) Report date to SNHD.

Investigations are ongoing; data are subject to change.

Reporting through 13JUN2022

Henderson zip codes include 89002, 89011, 89012, 89014, 89015, 89044, 89052, 89074, 89119, 89120, 89122, 89123, 89124, 89183.

Case Age Rates in Henderson

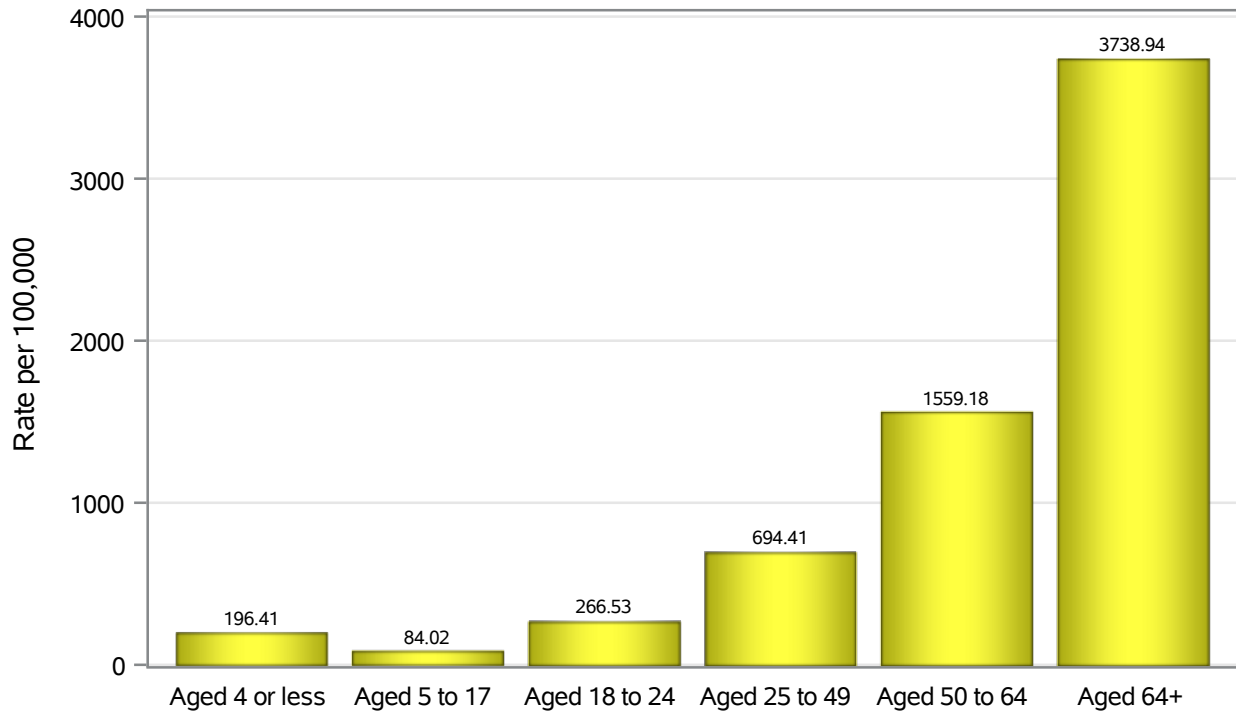


Investigations are ongoing; data are subject to change.

Reporting through 13JUN2022

Henderson zip codes include 89002, 89011, 89012, 89014, 89015, 89044, 89052, 89074, 89119, 89120, 89122, 89123, 89124, 89183.

Hospitalization Age Rates in Henderson

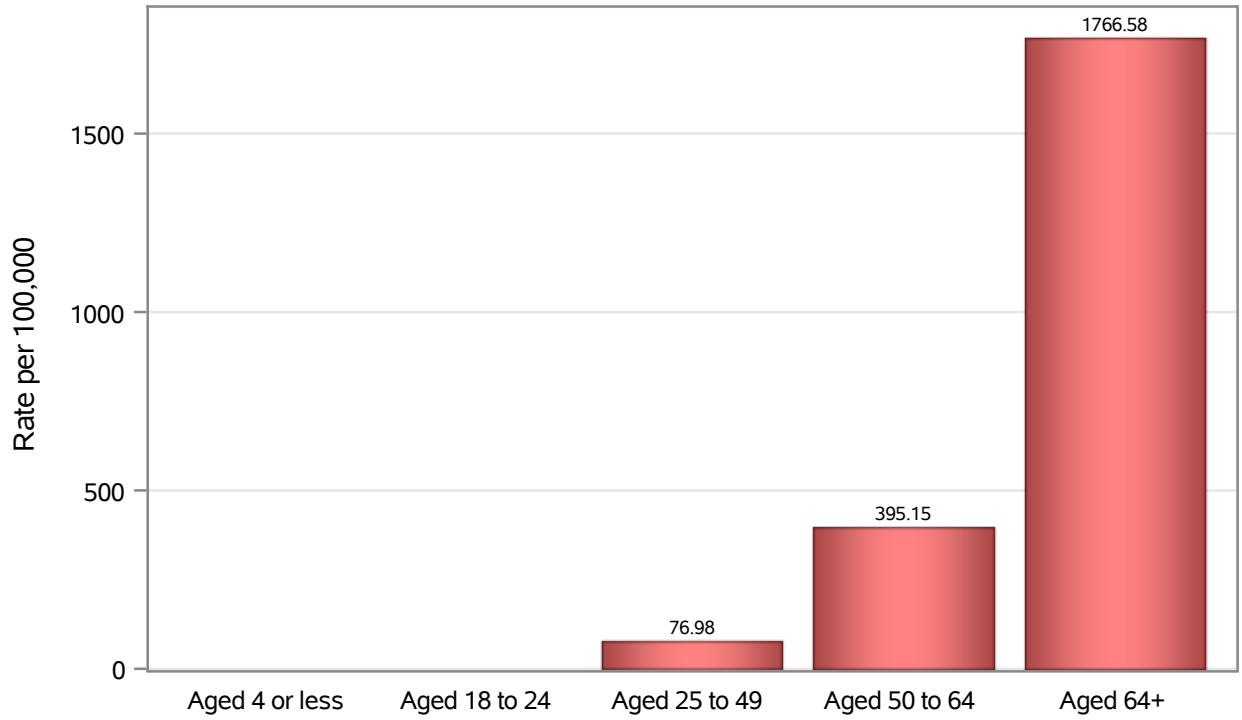


Investigations are ongoing; data are subject to change.

Reporting through 13JUN2022

Henderson zip codes include 89002, 89011, 89012, 89014, 89015, 89044, 89052, 89074, 89119, 89120, 89122, 89123, 89124, 89183.

Death Age Rates in Henderson



Investigations are ongoing; data are subject to change.

Reporting through 13JUN2022

Henderson zip codes include 89002, 89011, 89012, 89014, 89015, 89044, 89052, 89074, 89119, 89120, 89122, 89123, 89124, 89183.

Table 5: Age and COVID19 in Henderson

Case Status	Age Categories	N	%	Population	Rate per 100,000
Cases	Aged 4 or less	2540	2.2	29,021	8752.3
	Aged 5 to 17	12623	11.1	82,126	15370
	Aged 18 to 24	12198	10.7	44,273	27552
	Aged 25 to 49	48935	43.1	187064	26159
	Aged 50 to 64	22385	19.7	102746	21787
	Aged 64+	14859	13.1	86,495	17179
	Unknown	25	0.0	.	.
Hospitalizations	Aged 4 or less	57	0.9	29,021	196.41
	Aged 5 to 17	69	1.1	82,126	84.02
	Aged 18 to 24	118	1.8	44,273	266.53
	Aged 25 to 49	1299	20.4	187064	694.41
	Aged 50 to 64	1602	25.1	102746	1559.2
	Aged 64+	3234	50.7	86,495	3738.9
	Deaths	Aged 4 or less	1	0.0	29,021
Aged 18 to 24		3	0.1	44,273	.
Aged 25 to 49		144	6.9	187064	76.98
Aged 50 to 64		406	19.5	102746	395.15
Aged 64+		1528	73.4	86,495	1766.6

Note1: Population data source for calculating rate estimates: U.S. Census Bureau, ACS 5-year estimate.

Note2: Rates for categories with fewer than 12 cases are suppressed due to high relative standard error.

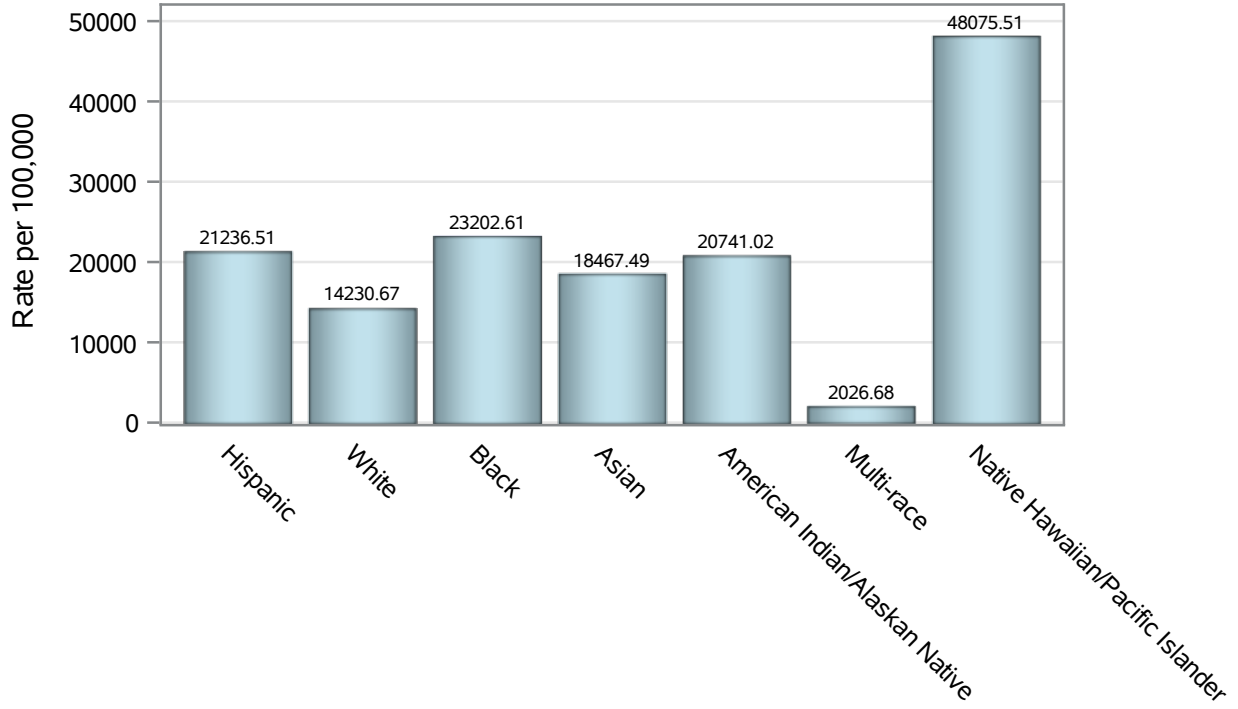
Note3: Hospitalizations are regardless of deceased status; Deaths are regardless of hospitalization status

Investigations are ongoing; data are subject to change.

Reporting through 13JUN2022

Henderson zip codes include 89002, 89011, 89012, 89014, 89015, 89044, 89052, 89074, 89119, 89120, 89122, 89123, 89124, 89183.

Case Race/Ethnicity Rates in Henderson

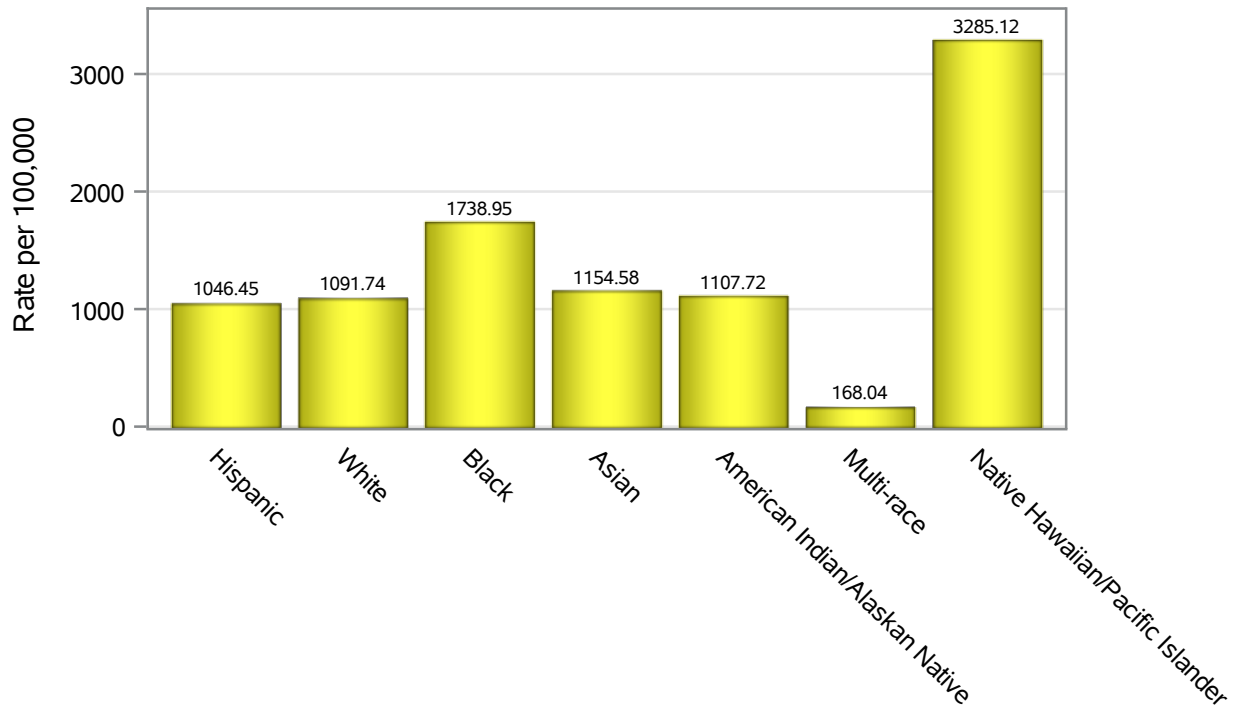


Investigations are ongoing; data are subject to change.

Reporting through 13JUN2022

Henderson zip codes include 89002, 89011, 89012, 89014, 89015, 89044, 89052, 89074, 89119, 89120, 89122, 89123, 89124, 89183.

Hospitalization Race/Ethnicity Rates in Henderson

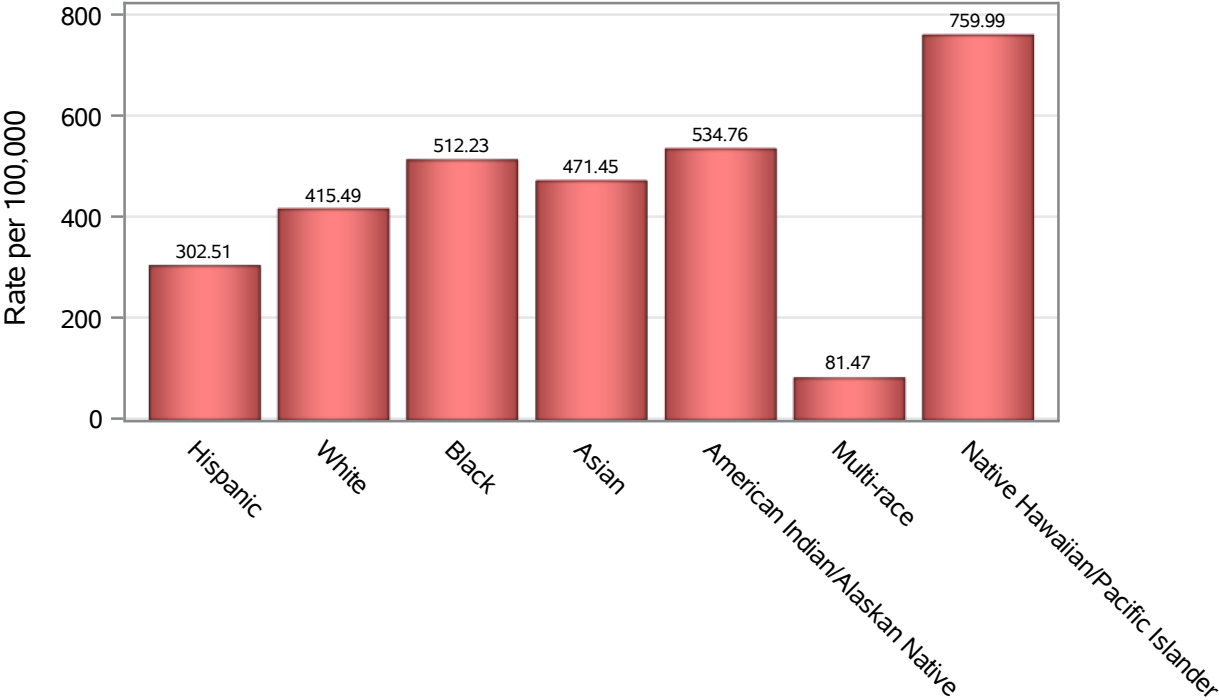


Investigations are ongoing; data are subject to change.

Reporting through 13JUN2022

Henderson zip codes include 89002, 89011, 89012, 89014, 89015, 89044, 89052, 89074, 89119, 89120, 89122, 89123, 89124, 89183.

Death Race/Ethnicity Rates in Henderson



Investigations are ongoing; data are subject to change.

Reporting through 13JUN2022

Henderson zip codes include 89002, 89011, 89012, 89014, 89015, 89044, 89052, 89074, 89119, 89120, 89122, 89123, 89124, 89183.

Table 6: Race/Ethnicity and COVID19 in Henderson

Case Status	Race Ethnicity Categories	N	%	Population	Rate per 100,000
Cases	Hispanic	25834	22.7	121649	21237
	White	41477	36.5	291462	14231
	Black	8833	7.8	38,069	23203
	Asian	9597	8.5	51,967	18467
	American Indian/Alaskan Native	543	0.5	2,618	20741
	Multi-race	398	0.4	19,638	2026.7
	Native Hawaiian/Pacific Islander	1961	1.7	4,079	48076
	Unknown	24922	21.9	.	.
Hospitalizations	Hispanic	1273	20.0	121649	1046.5
	White	3182	49.9	291462	1091.7
	Black	662	10.4	38,069	1738.9
	Asian	600	9.4	51,967	1154.6
	American Indian/Alaskan Native	29	0.5	2,618	1107.7
	Multi-race	33	0.5	19,638	168.04
	Native Hawaiian/Pacific Islander	134	2.1	4,079	3285.1
	Unknown	466	7.3	.	.
Deaths	Hispanic	368	17.7	121649	302.51
	White	1211	58.2	291462	415.49
	Black	195	9.4	38,069	512.23
	Asian	245	11.8	51,967	471.45
	American Indian/Alaskan Native	14	0.7	2,618	534.76
	Multi-race	16	0.8	19,638	81.47
	Native Hawaiian/Pacific Islander	31	1.5	4,079	759.99
	Unknown	2	0.1	.	.

Note1: Population data source for calculating rate estimates: U.S. Census Bureau, ACS 5-year estimate.

Note2: Rates for categories with fewer than 12 cases are suppressed due to high relative standard error.

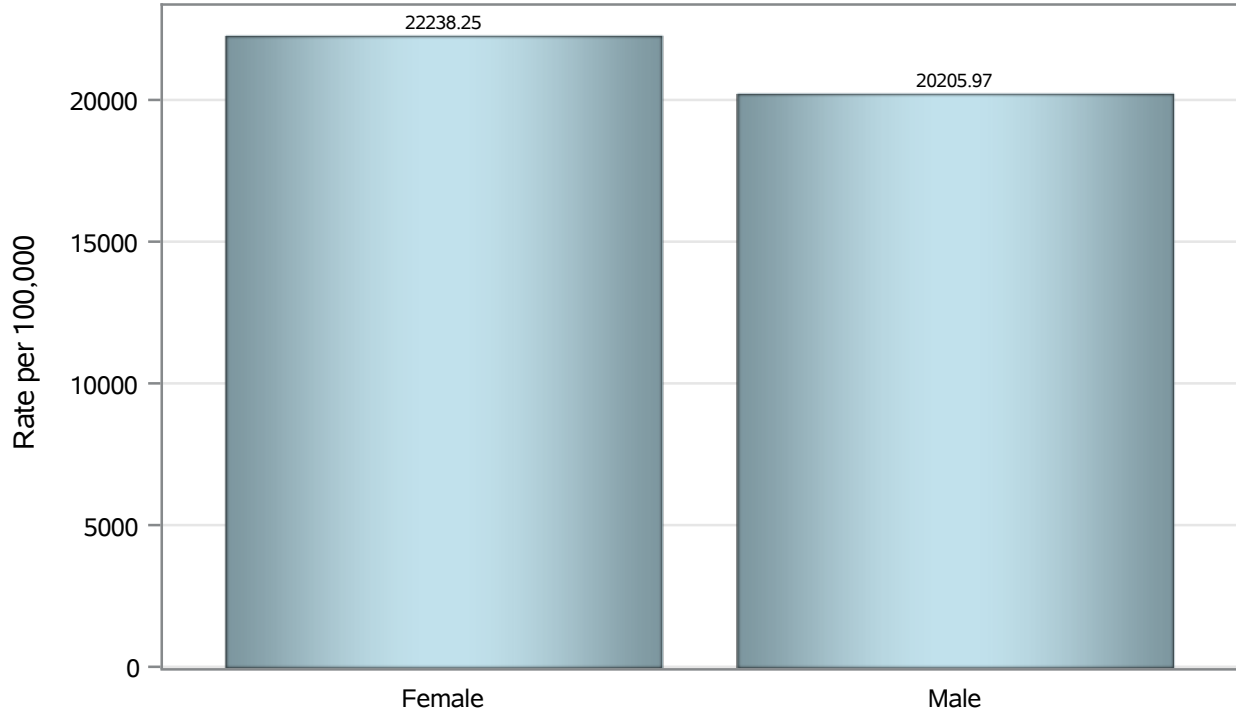
Note3: Hospitalizations are regardless of deceased status; Deaths are regardless of hospitalization status

Investigations are ongoing; data are subject to change.

Reporting through 13JUN2022

Henderson zip codes include 89002, 89011, 89012, 89014, 89015, 89044, 89052, 89074, 89119, 89120, 89122, 89123, 89124, 89183.

Case Birth Sex Rates in Henderson

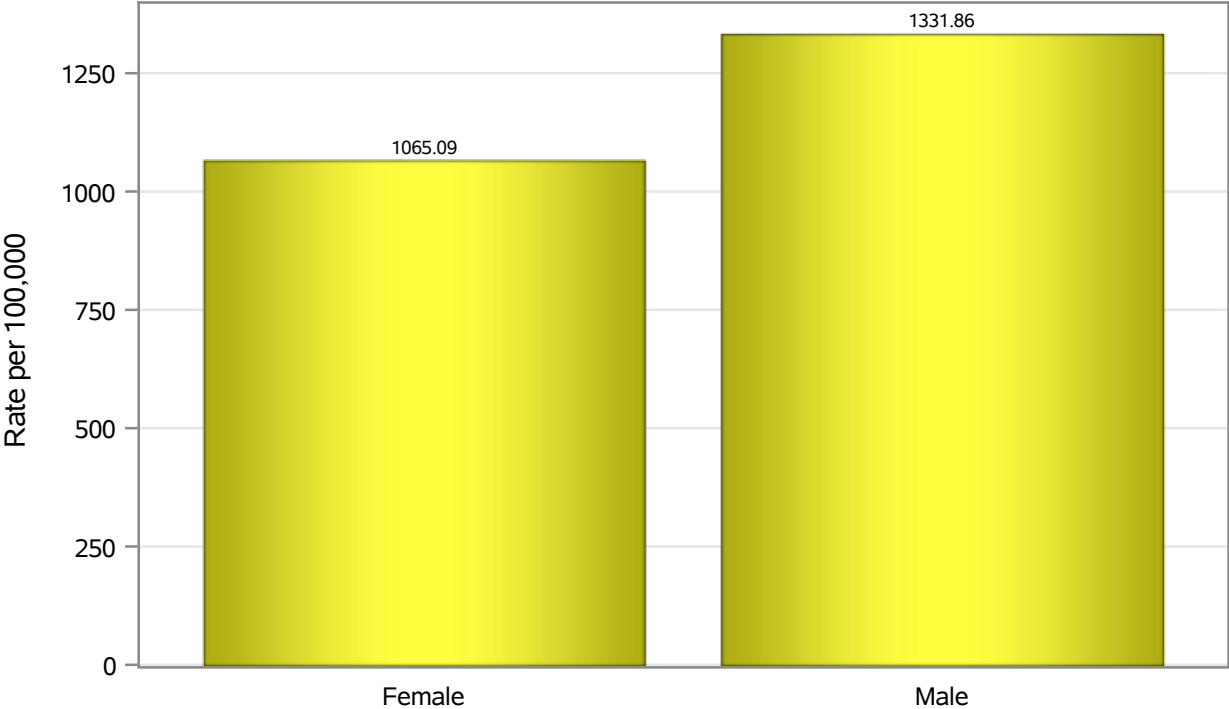


Investigations are ongoing; data are subject to change.

Reporting through 13JUN2022

Henderson zip codes include 89002, 89011, 89012, 89014, 89015, 89044, 89052, 89074, 89119, 89120, 89122, 89123, 89124, 89183.

Hospitalization Birth Sex Rates in Henderson

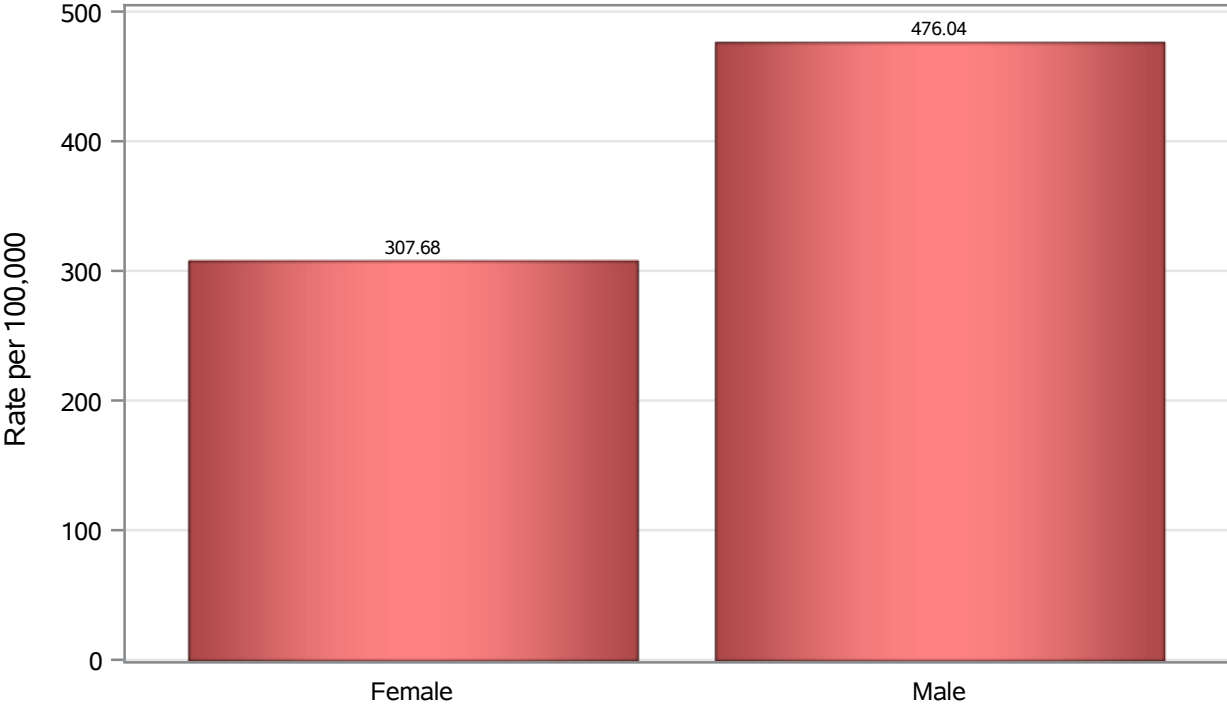


Investigations are ongoing; data are subject to change.

Reporting through 13JUN2022

Henderson zip codes include 89002, 89011, 89012, 89014, 89015, 89044, 89052, 89074, 89119, 89120, 89122, 89123, 89124, 89183.

Death Birth Sex Rates in Henderson



Investigations are ongoing; data are subject to change.
Reporting through 13JUN2022

Henderson zip codes include 89002, 89011, 89012, 89014, 89015, 89044, 89052, 89074, 89119, 89120, 89122, 89123, 89124, 89183.

Table 7: Birth Sex and COVID19 in Henderson

Case Status	Birth Sex Categories	N	%	Population	Rate per 100,000
Cases	Female	59339	52.3	266833	22238
	Male	53524	47.1	264892	20206
	Unknown	702	0.6	.	.
Hospitalizations	Female	2842	44.6	266833	1065.1
	Male	3528	55.3	264892	1331.9
	Unknown	9	0.1	.	.
Deaths	Female	821	39.4	266833	307.68
	Male	1261	60.6	264892	476.04

Note1: Population data source for calculating rate estimates: U.S. Census Bureau, ACS 5-year estimate.

Note2: Rates for categories with fewer than 12 cases are suppressed due to high relative standard error.

Note3: Hospitalizations are regardless of deceased status; Deaths are regardless of hospitalization status

Investigations are ongoing; data are subject to change.

Reporting through 13JUN2022

Henderson zip codes include 89002, 89011, 89012, 89014, 89015, 89044, 89052, 89074, 89119, 89120, 89122, 89123, 89124, 89183.