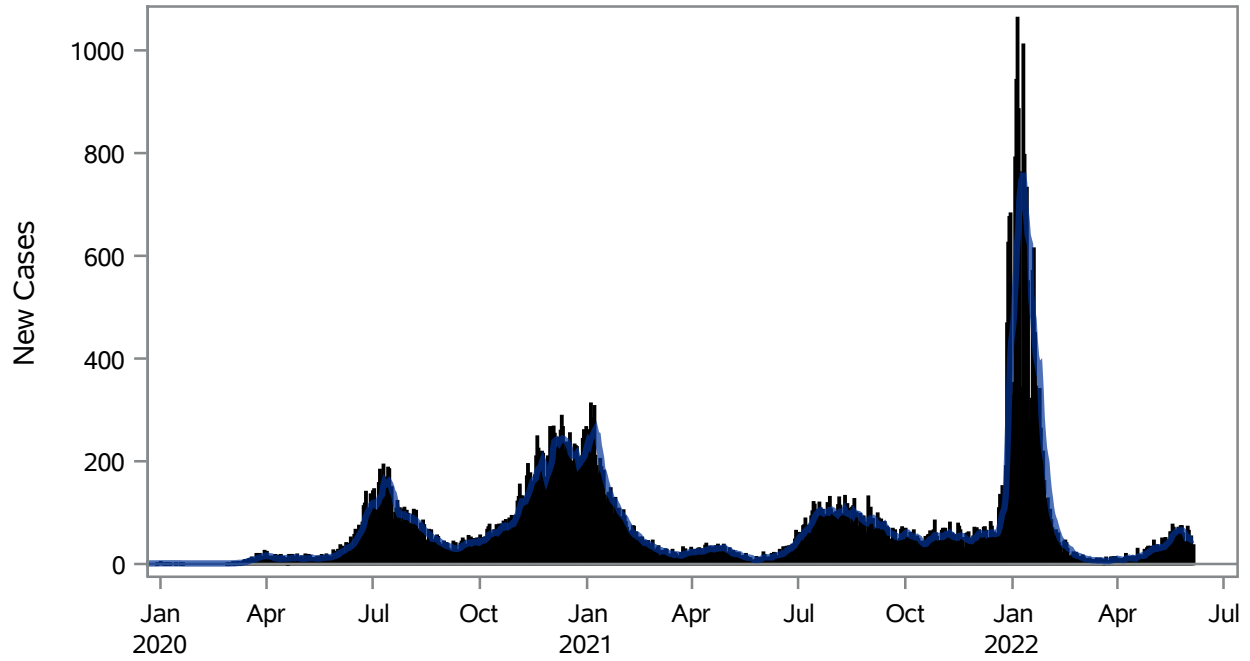


### COVID19 Cases for North Las Vegas, 7-Day Moving Average



■ New Cases    — 7-Day Moving Average

Investigations are ongoing; data are subject to change.

Reporting through 06JUN2022

North Las Vegas zip codes include 89030, 89031, 89032, 89033, 89036, 89081, 89084, 89085, 89086, 89087.

**Table 1: New COVID19 Cases and 7-Day Moving Average in North Las Vegas, Previous Two Weeks**

Date (Daily)	New Cases	7-Day Moving Average
24MAY2022	66	65.57
25MAY2022	73	65.14
26MAY2022	73	65.57
27MAY2022	59	64.71
28MAY2022	42	62.57
29MAY2022	30	59.00
30MAY2022	22	52.14
31MAY2022	72	53.00
01JUN2022	64	51.71
02JUN2022	51	48.57
03JUN2022	53	47.71
04JUN2022	32	46.29

---

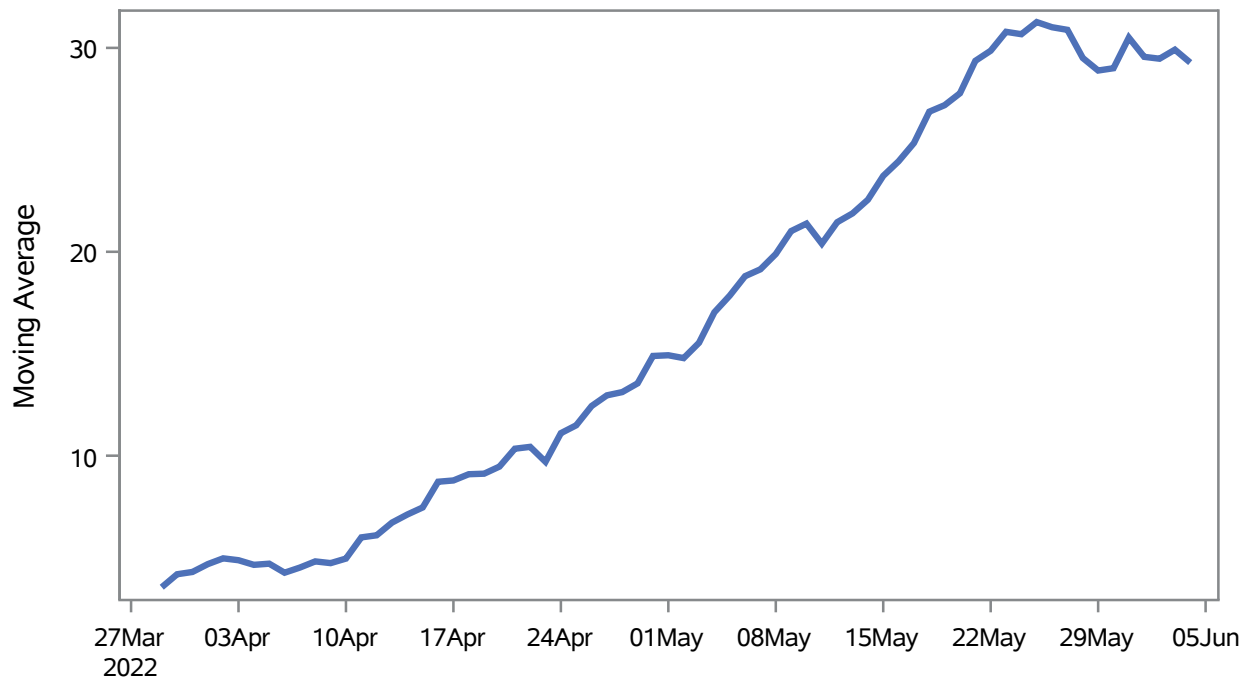
Note1: Event Date is calculated as follows based on completed information:  
1) Disease onset date 2) Disease diagnosis date 3) Lab result collection date 4) Report date to SNHD.

---

**Investigations are ongoing; data are subject to change.  
Reporting through 06JUN2022**

**North Las Vegas zip codes include 89030, 89031, 89032, 89033, 89036, 89081, 89084, 89085, 89086, 89087.**

### Percent of People Receiving COVID-19 Viral Tests Who Have Positive Results in North Las Vegas



Investigations are ongoing; data are subject to change.

Reporting through 06JUN2022

North Las Vegas zip codes include 89030, 89031, 89032, 89033, 89036, 89081, 89084, 89085, 89086, 89087.

**Table 2: Percent of People Receiving COVID-19 Viral Tests Who Have Positive Results in North Las Vegas**

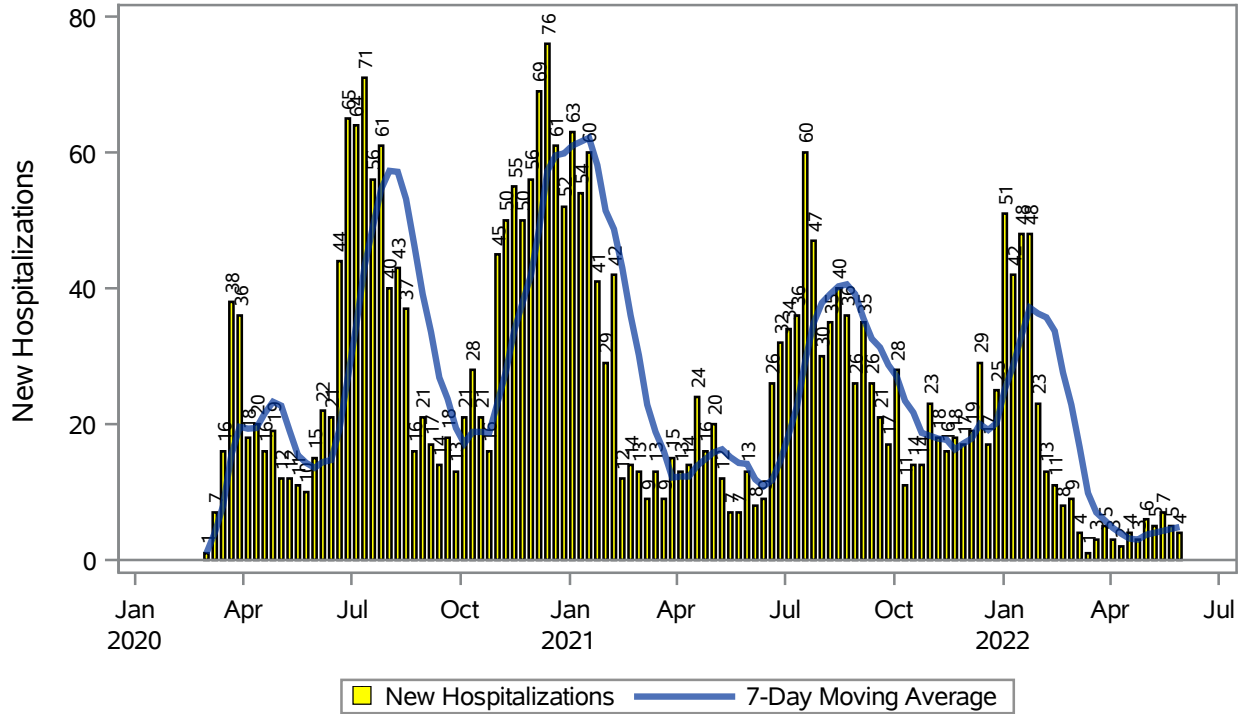
Collection Date	Positive	Negative	Equivocal	Total	% Positivity	7-Day Moving Average
21MAY2022	78	137		215	36.28	29.4
22MAY2022	72	131		203	35.47	29.9
23MAY2022	108	219	1	328	32.93	30.8
24MAY2022	94	281	2	377	24.93	30.7
25MAY2022	108	232	1	341	31.67	31.3
26MAY2022	106	273	2	381	27.82	31.0
27MAY2022	94	253		347	27.09	30.9
28MAY2022	58	160		218	26.61	29.5
29MAY2022	53	117		170	31.18	28.9
30MAY2022	30	59		89	33.71	29.0
31MAY2022	117	210	3	330	35.45	30.5
01JUN2022	92	275		367	25.07	29.6
02JUN2022	81	214	3	298	27.18	29.5
03JUN2022	83	191	1	275	30.18	29.9
04JUN2022	49	172		221	22.17	29.3

Note: Testing Data includes a 3 day delay

**Investigations are ongoing; data are subject to change.  
Reporting through 06JUN2022**

**North Las Vegas zip codes include 89030, 89031, 89032, 89033, 89036, 89081, 89084, 89085, 89086, 89087.**

### COVID19 Hospitalizations for North Las Vegas, 7-Day Moving Average



Investigations are ongoing; data are subject to change.

Reporting through 06JUN2022

North Las Vegas zip codes include 89030, 89031, 89032, 89033, 89036, 89081, 89084, 89085, 89086, 89087.

**Table 3: New COVID19-Related Hospitalizations and 7-Day Moving Average in North Las Vegas, previous month**

Week	Hospitalizations	7-Day Moving Average
08MAY2022	5	4.00
15MAY2022	7	4.29
22MAY2022	5	4.57
29MAY2022	4	4.86

---

Note1: Admission Date is calculated as follows based on completed information:  
A) COVID19 Case is hospitalized B) COVID19 Case has a hospital admission date.

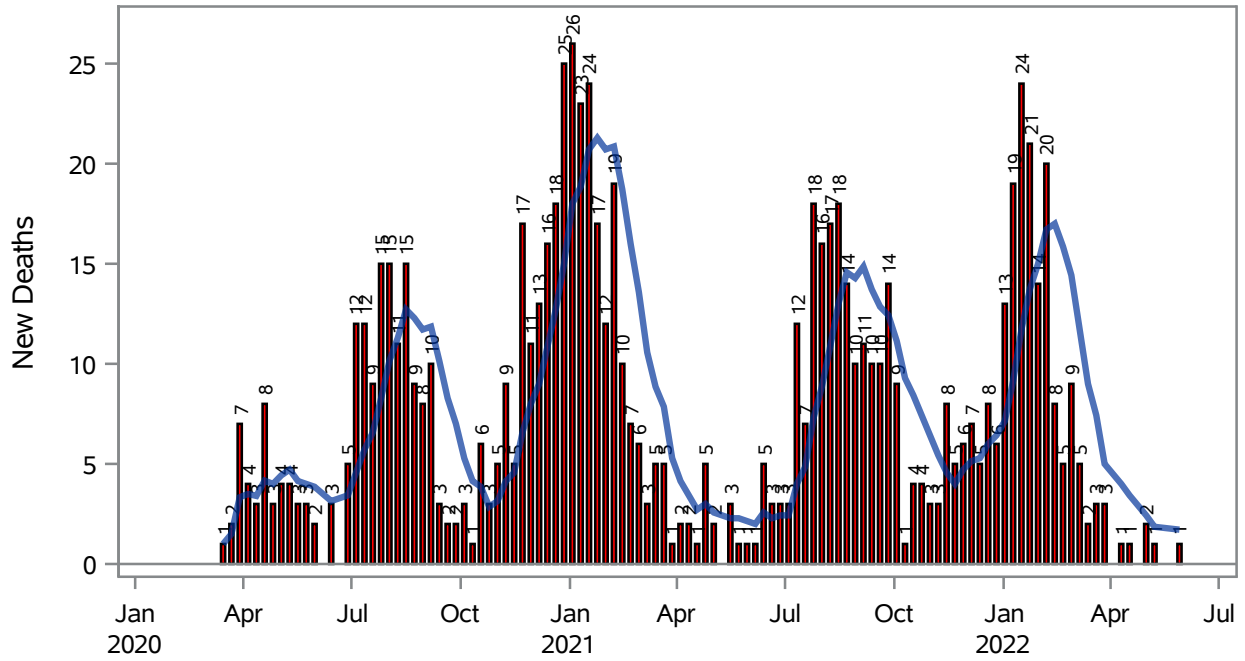
If admission date is missing, then the following is substituted temporarily, in order:  
1) Disease onset date 2) Disease diagnosis date 3) Lab result collection date 4) Report date to SNHD.

---

**Investigations are ongoing; data are subject to change.  
Reporting through 06JUN2022**

**North Las Vegas zip codes include 89030, 89031, 89032, 89033, 89036, 89081, 89084, 89085, 89086, 89087.**

### COVID19 Deaths for North Las Vegas, 7-Day Moving Average



■ New Deaths      — 7-Day Moving Average

Investigations are ongoing; data are subject to change.

Reporting through 06JUN2022

North Las Vegas zip codes include 89030, 89031, 89032, 89033, 89036, 89081, 89084, 89085, 89086, 89087.

**Table 4: New COVID19-Related Deaths and 7-Day Moving Average in North Las Vegas, Previous Month**

Week	Deaths	7-Day Moving Average
08MAY2022	1	1.86
29MAY2022	1	1.71

---

Note1: Date of Death is calculated as follows based on completed information:  
A) COVID19 Case is reported as deceased B) COVID19 Case has a reported date of death.

If date of death is missing, then the following is substituted temporarily, in order:  
1) Disease onset date 2) Disease diagnosis date  
3) Lab result collection date 4) Report date to SNHD.

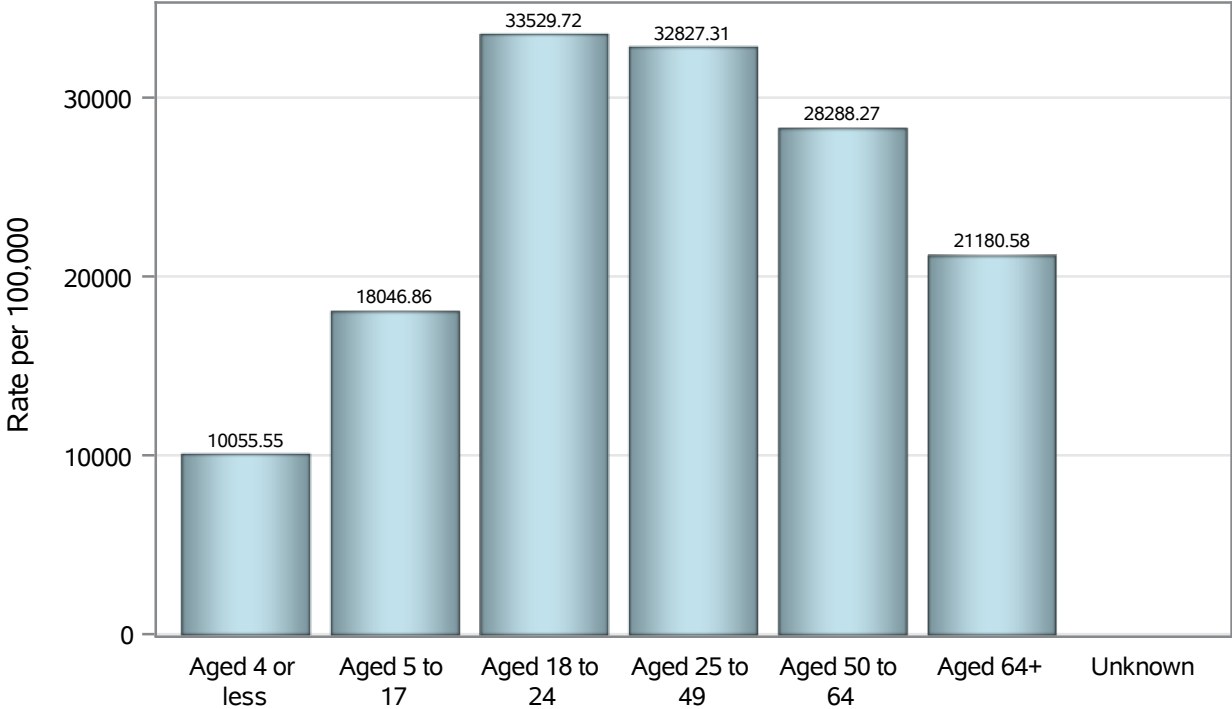
---

**Investigations are ongoing; data are subject to change.  
Reporting through 06JUN2022**

**North Las Vegas zip codes include 89030, 89031, 89032, 89033, 89036, 89081, 89084, 89085, 89086, 89087.**



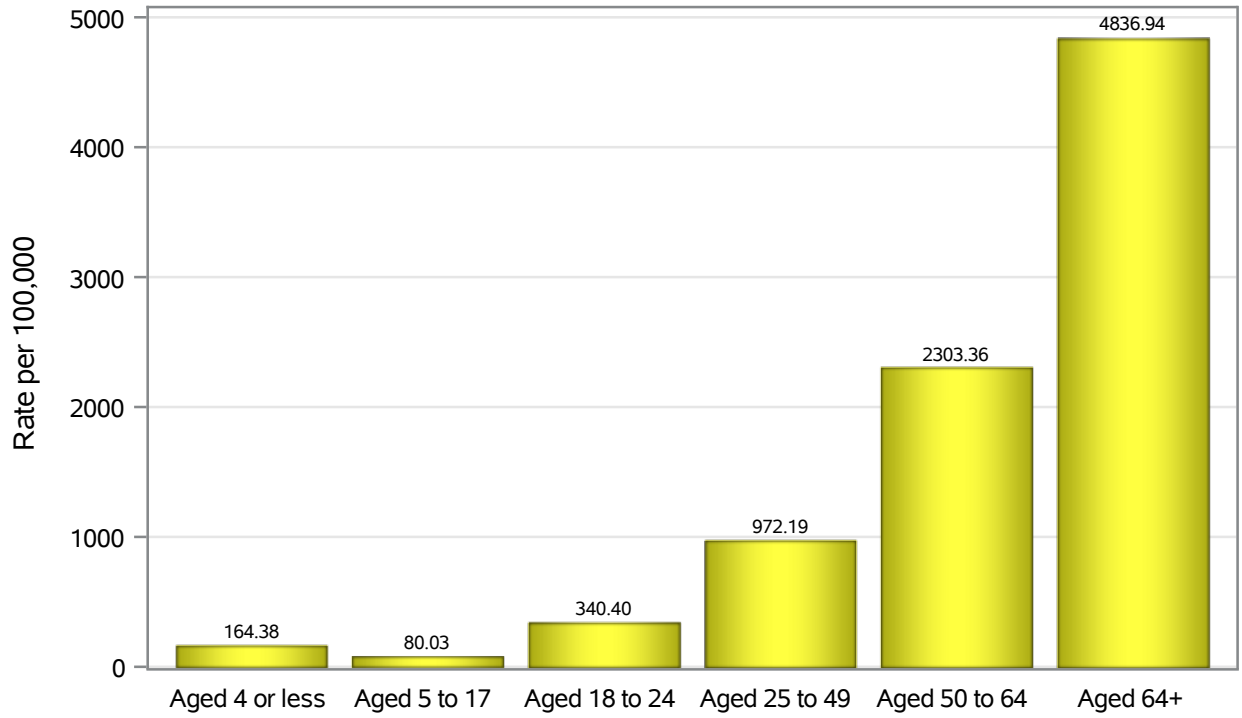
### Case Age Rates in North Las Vegas



Investigations are ongoing; data are subject to change.  
Reporting through 06JUN2022

North Las Vegas zip codes include 89030, 89031, 89032, 89033, 89036, 89081, 89084, 89085, 89086, 89087.

### Hospitalization Age Rates in North Las Vegas

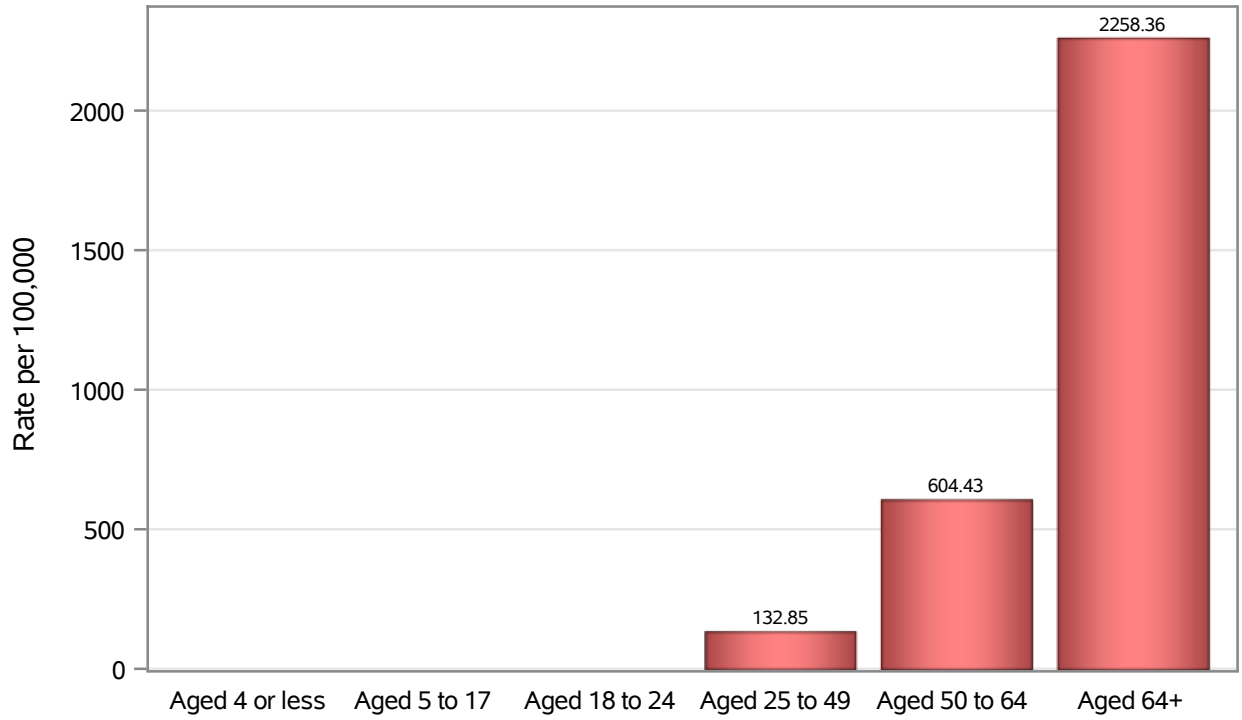


Investigations are ongoing; data are subject to change.

Reporting through 06JUN2022

North Las Vegas zip codes include 89030, 89031, 89032, 89033, 89036, 89081, 89084, 89085, 89086, 89087.

### Death Age Rates in North Las Vegas



Investigations are ongoing; data are subject to change.

Reporting through 06JUN2022

North Las Vegas zip codes include 89030, 89031, 89032, 89033, 89036, 89081, 89084, 89085, 89086, 89087.

**Table 5: Age and COVID19 in North Las Vegas**

Case Status	Age Categories	N	%	Population	Rate per 100,000
Cases	Aged 4 or less	1774	2.9	17,642	10056
	Aged 5 to 17	9020	14.8	49,981	18047
	Aged 18 to 24	7683	12.6	22,914	33530
	Aged 25 to 49	27182	44.5	82,803	32827
	Aged 50 to 64	10390	17.0	36,729	28288
	Aged 64+	5027	8.2	23,734	21181
	Unknown	12	0.0	.	.
Hospitalizations	Aged 4 or less	29	1.0	17,642	164.38
	Aged 5 to 17	40	1.4	49,981	80.03
	Aged 18 to 24	78	2.6	22,914	340.40
	Aged 25 to 49	805	27.3	82,803	972.19
	Aged 50 to 64	846	28.7	36,729	2303.4
	Aged 64+	1148	39.0	23,734	4836.9
Deaths	Aged 4 or less	1	0.1	17,642	.
	Aged 5 to 17	1	0.1	49,981	.
	Aged 18 to 24	2	0.2	22,914	.
	Aged 25 to 49	110	12.6	82,803	132.85
	Aged 50 to 64	222	25.5	36,729	604.43
	Aged 64+	536	61.5	23,734	2258.4

Note1: Population data source for calculating rate estimates: U.S. Census Bureau, ACS 5-year estimate.

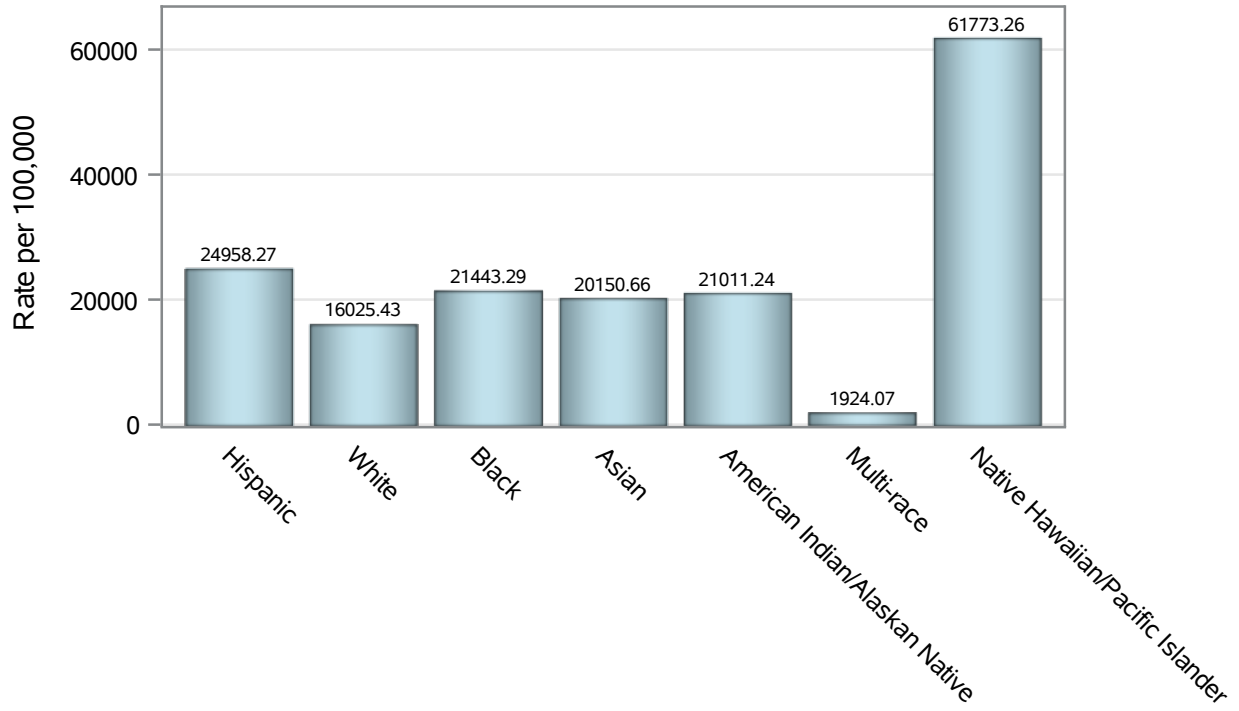
Note2: Rates for categories with fewer than 12 cases are suppressed due to high relative standard error.

Note3: Hospitalizations are regardless of deceased status; Deaths are regardless of hospitalization status

**Investigations are ongoing; data are subject to change.  
Reporting through 06JUN2022**

**North Las Vegas zip codes include 89030, 89031, 89032, 89033, 89036, 89081, 89084, 89085, 89086, 89087.**

### Case Race/Ethnicity Rates in North Las Vegas

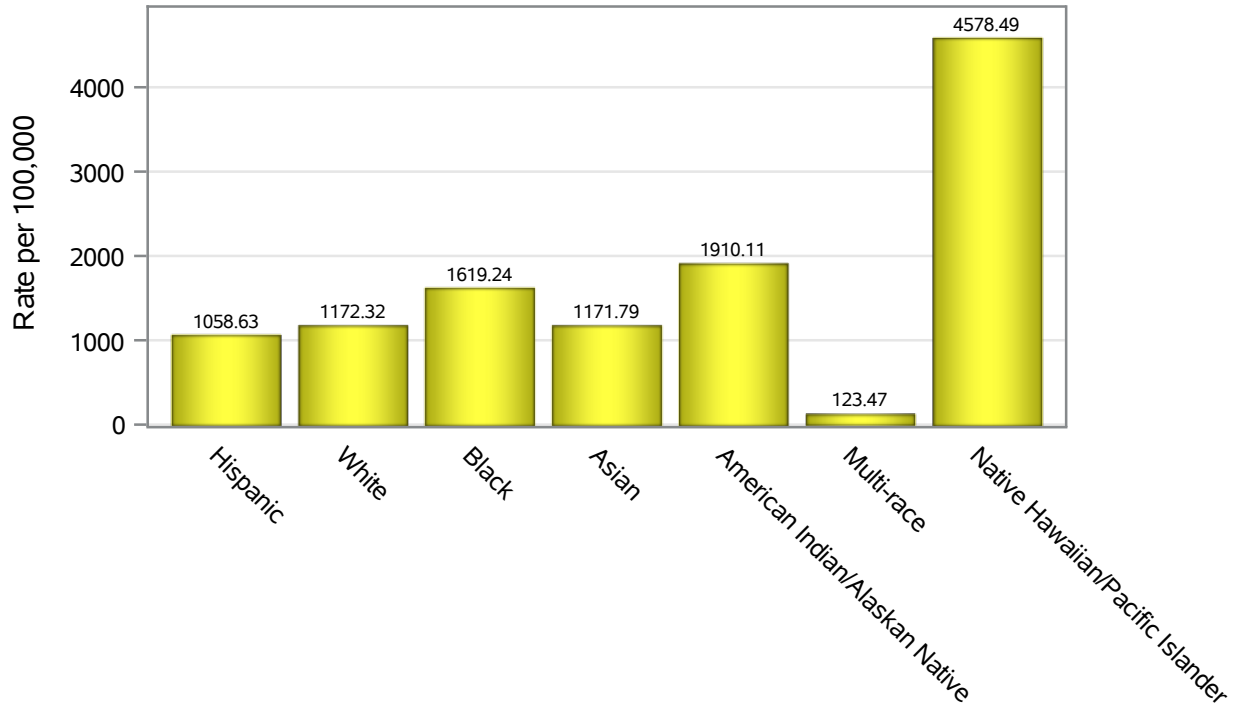


Investigations are ongoing; data are subject to change.

Reporting through 06JUN2022

North Las Vegas zip codes include 89030, 89031, 89032, 89033, 89036, 89081, 89084, 89085, 89086, 89087.

### Hospitalization Race/Ethnicity Rates in North Las Vegas

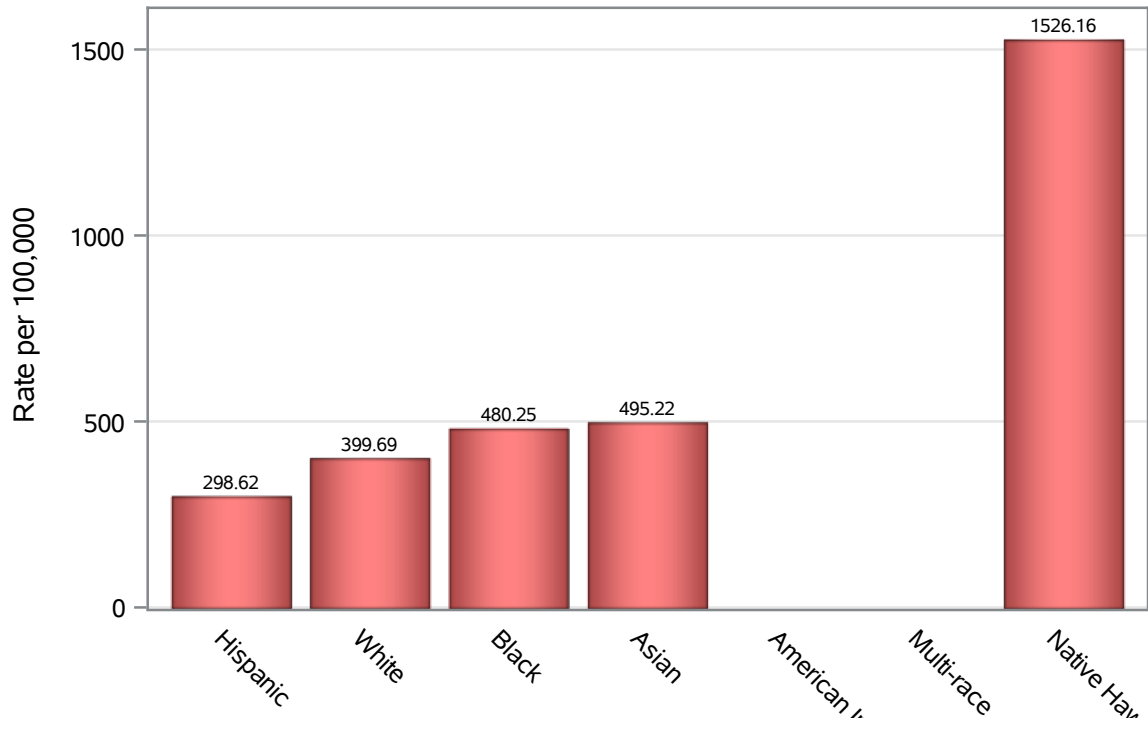


Investigations are ongoing; data are subject to change.

Reporting through 06JUN2022

North Las Vegas zip codes include 89030, 89031, 89032, 89033, 89036, 89081, 89084, 89085, 89086, 89087.

### Death Race/Ethnicity Rates in North Las Vegas



Investigations are ongoing; data are subject to change.

Reporting through 06JUN2022

North Las Vegas zip codes include 89030, 89031, 89032, 89033, 89036, 89081, 89084, 89085, 89086, 89087.

**Table 6: Race/Ethnicity and COVID19 in North Las Vegas**

Case Status	Race Ethnicity Categories	N	%	Population	Rate per 100,000
Cases	Hispanic	24071	39.4	96,445	24958
	White	10184	16.7	63,549	16025
	Black	10091	16.5	47,059	21443
	Asian	2889	4.7	14,337	20151
	American Indian/Alaskan Native	187	0.3	890	21011
	Multi-race	187	0.3	9,719	1924.1
	Native Hawaiian/Pacific Islander	850	1.4	1,376	61773
	Unknown	12629	20.7	.	.
Hospitalizations	Hispanic	1021	34.7	96,445	1058.6
	White	745	25.3	63,549	1172.3
	Black	762	25.9	47,059	1619.2
	Asian	168	5.7	14,337	1171.8
	American Indian/Alaskan Native	17	0.6	890	1910.1
	Multi-race	12	0.4	9,719	123.47
	Native Hawaiian/Pacific Islander	63	2.1	1,376	4578.5
	Unknown	158	5.4	.	.
Deaths	Hispanic	288	33.0	96,445	298.62
	White	254	29.1	63,549	399.69
	Black	226	25.9	47,059	480.25
	Asian	71	8.1	14,337	495.22
	American Indian/Alaskan Native	6	0.7	890	.
	Multi-race	6	0.7	9,719	.
	Native Hawaiian/Pacific Islander	21	2.4	1,376	1526.2

Note1: Population data source for calculating rate estimates: U.S. Census Bureau, ACS 5-year estimate.

Note2: Rates for categories with fewer than 12 cases are suppressed due to high relative standard error.

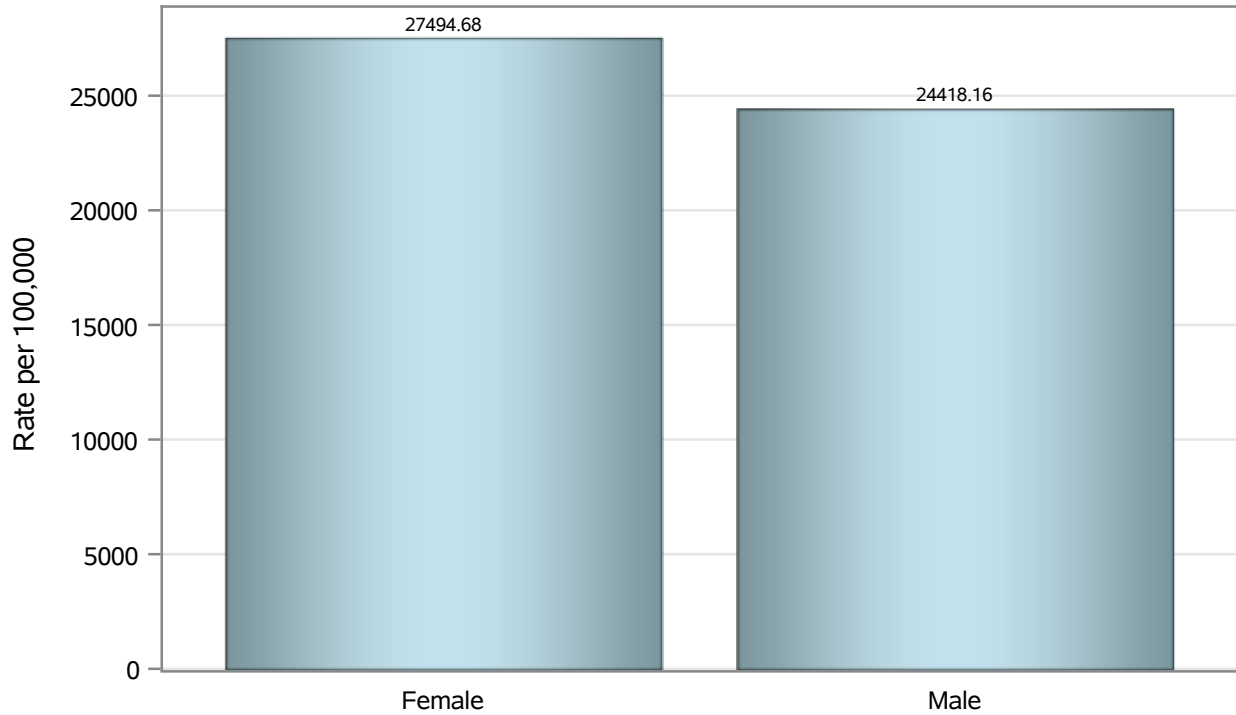
Note3: Hospitalizations are regardless of deceased status; Deaths are regardless of hospitalization status

**Investigations are ongoing; data are subject to change.  
Reporting through 06JUN2022**

**North Las Vegas zip codes include 89030, 89031, 89032, 89033, 89036, 89081, 89084, 89085, 89086, 89087.**



### Case Birth Sex Rates in North Las Vegas

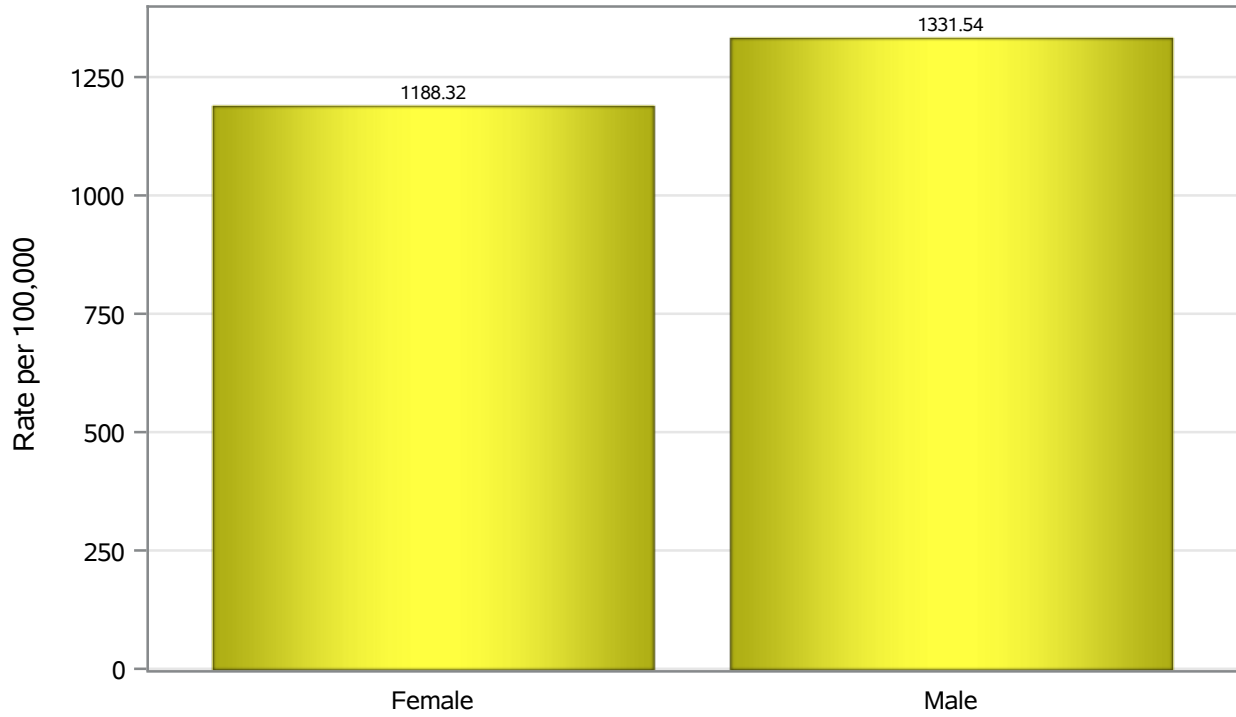


Investigations are ongoing; data are subject to change.

Reporting through 06JUN2022

North Las Vegas zip codes include 89030, 89031, 89032, 89033, 89036, 89081, 89084, 89085, 89086, 89087.

### Hospitalization Birth Sex Rates in North Las Vegas

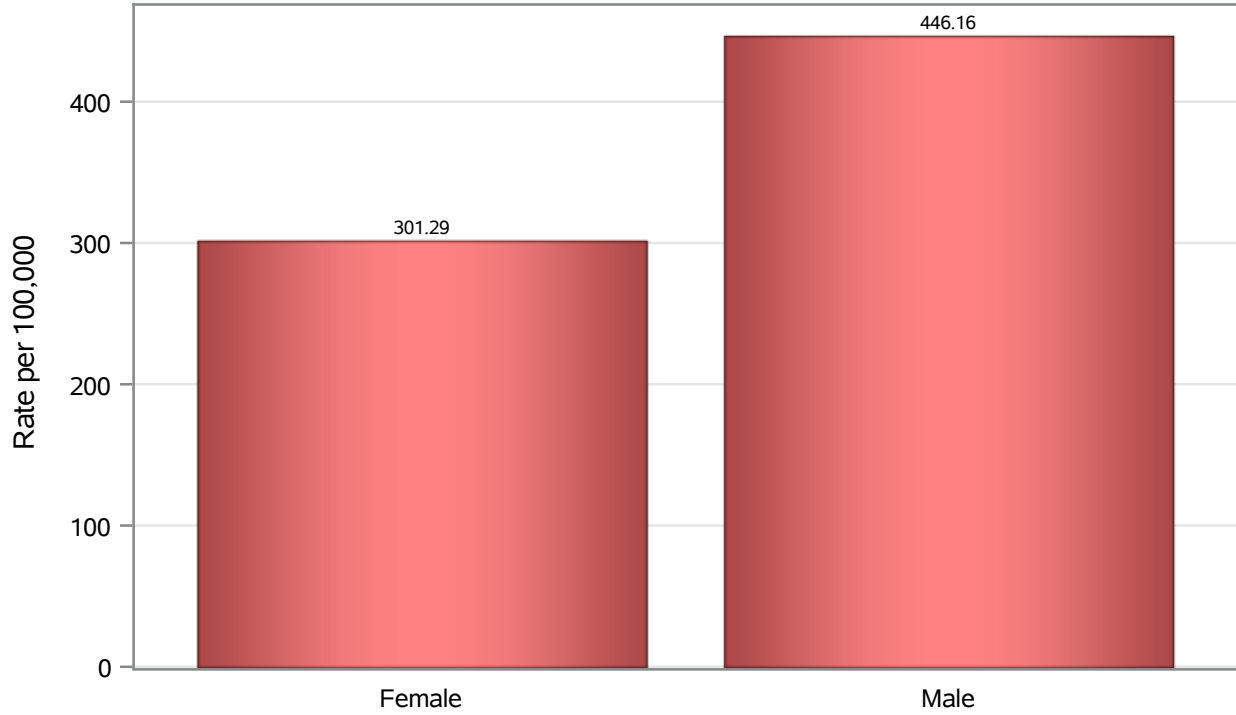


Investigations are ongoing; data are subject to change.

Reporting through 06JUN2022

North Las Vegas zip codes include 89030, 89031, 89032, 89033, 89036, 89081, 89084, 89085, 89086, 89087.

### Death Birth Sex Rates in North Las Vegas



Investigations are ongoing; data are subject to change.

Reporting through 06JUN2022

North Las Vegas zip codes include 89030, 89031, 89032, 89033, 89036, 89081, 89084, 89085, 89086, 89087.

**Table 7: Birth Sex and COVID19 in North Las Vegas**

Case Status	Birth Sex Categories	N	%	Population	Rate per 100,000
Cases	Female	32670	53.5	118823	27495
	Male	28076	46.0	114980	24418
	Unknown	342	0.6	.	.
Hospitalizations	Female	1412	47.9	118823	1188.3
	Male	1531	52.0	114980	1331.5
	Unknown	3	0.1	.	.
Deaths	Female	358	41.1	118823	301.29
	Male	513	58.8	114980	446.16
	Unknown	1	0.1	.	.

Note1: Population data source for calculating rate estimates: U.S. Census Bureau, ACS 5-year estimate.

Note2: Rates for categories with fewer than 12 cases are suppressed due to high relative standard error.

Note3: Hospitalizations are regardless of deceased status; Deaths are regardless of hospitalization status

**Investigations are ongoing; data are subject to change.  
Reporting through 06JUN2022**

**North Las Vegas zip codes include 89030, 89031, 89032, 89033, 89036, 89081, 89084, 89085, 89086, 89087.**