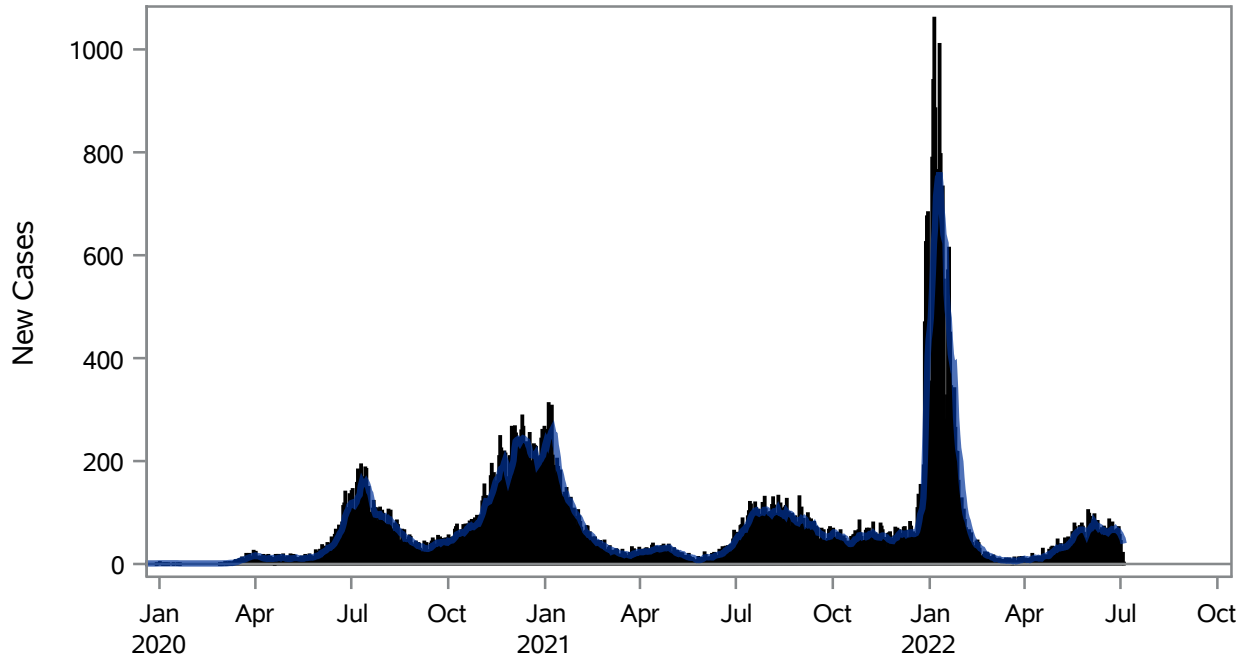


COVID19 Cases for North Las Vegas, 7-Day Moving Average



■ New Cases — 7-Day Moving Average

Investigations are ongoing; data are subject to change.

Reporting through 04JUL2022

North Las Vegas zip codes include 89030, 89031, 89032, 89033, 89036, 89081, 89084, 89085, 89086, 89087.

Table 1: New COVID19 Cases and 7-Day Moving Average in North Las Vegas, Previous Two Weeks

Date (Daily)	New Cases	7-Day Moving Average
21JUN2022	71	64.57
22JUN2022	79	65.57
23JUN2022	80	67.57
24JUN2022	64	67.00
25JUN2022	50	66.86
26JUN2022	50	68.57
27JUN2022	66	65.71
28JUN2022	67	65.14
29JUN2022	71	64.00
30JUN2022	56	60.57
01JUL2022	44	57.71
02JUL2022	17	53.00

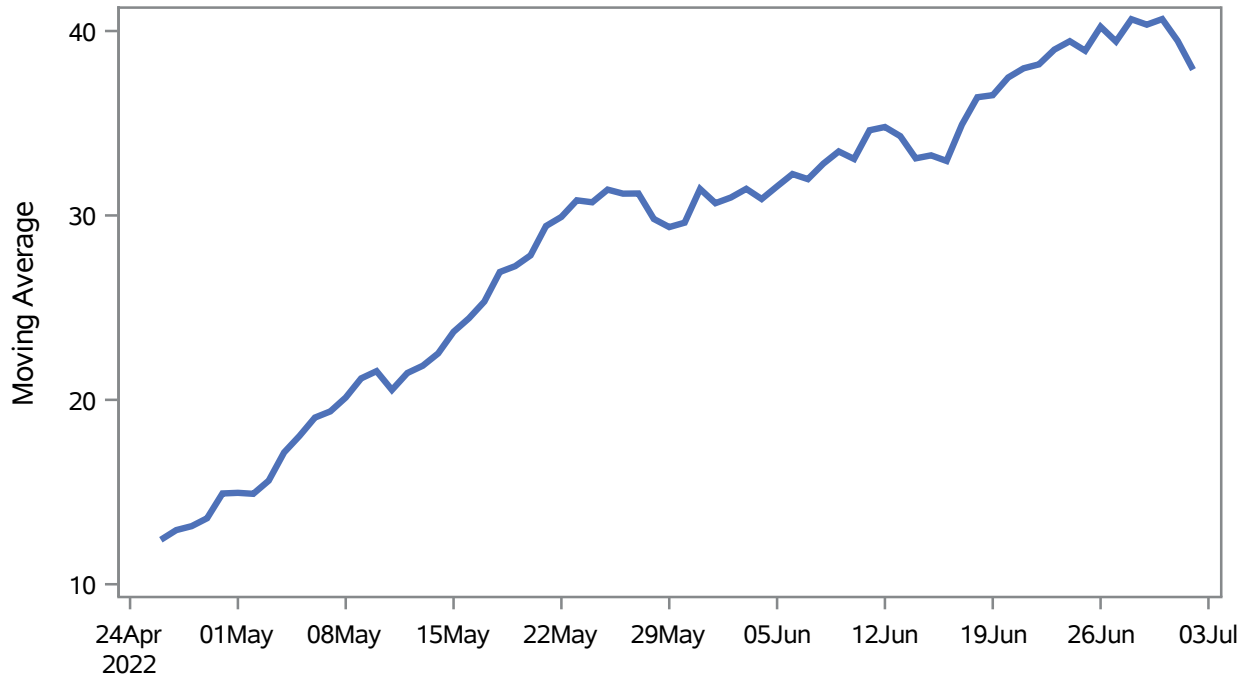
Note1: Event Date is calculated as follows based on completed information:

1) Disease onset date 2) Disease diagnosis date 3) Lab result collection date 4) Report date to SNHD.

**Investigations are ongoing; data are subject to change.
Reporting through 04JUL2022**

North Las Vegas zip codes include 89030, 89031, 89032, 89033, 89036, 89081, 89084, 89085, 89086, 89087.

Percent of People Receiving COVID-19 Viral Tests Who Have Positive Results in North Las Vegas



Investigations are ongoing; data are subject to change.

Reporting through 04JUL2022

North Las Vegas zip codes include 89030, 89031, 89032, 89033, 89036, 89081, 89084, 89085, 89086, 89087.

Table 2: Percent of People Receiving COVID-19 Viral Tests Who Have Positive Results in North Las Vegas

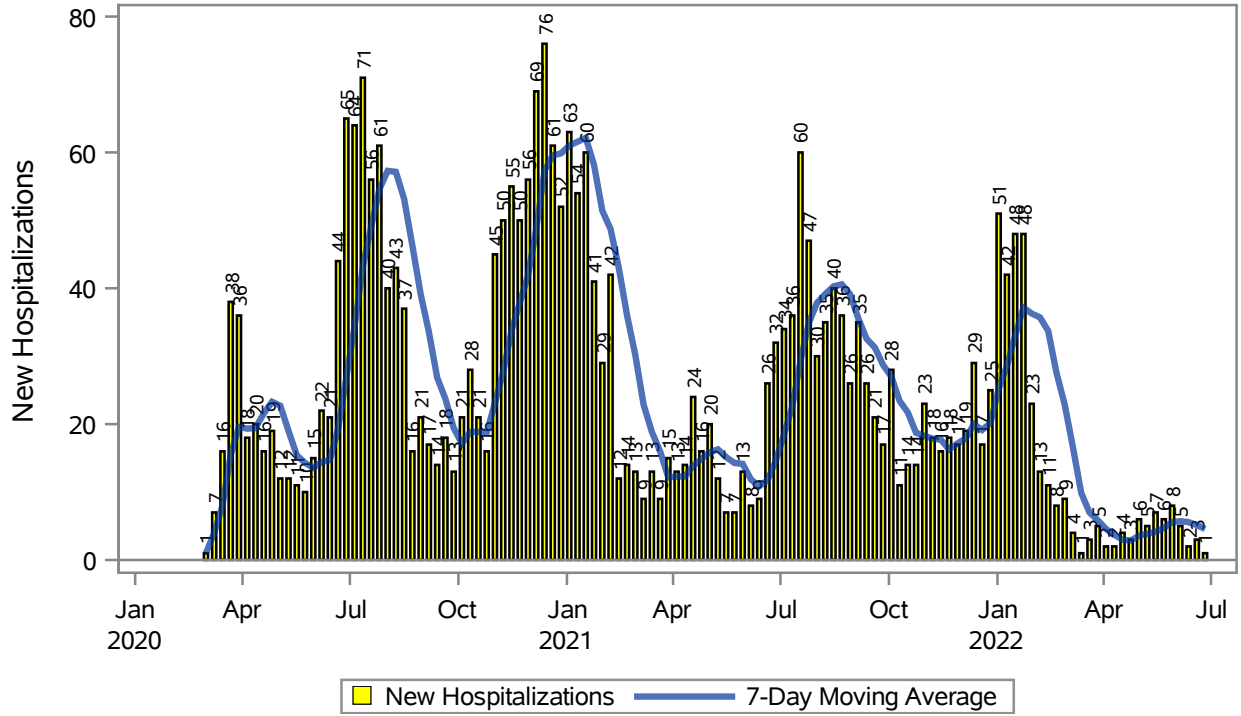
Collection Date	Positive	Negative	Equivocal	Total	% Positivity	7-Day Moving Average
18JUN2022	81	103		184	44.02	36.4
19JUN2022	69	107		176	39.20	36.5
20JUN2022	138	188		326	42.33	37.5
21JUN2022	119	265	1	385	30.91	38.0
22JUN2022	108	193		301	35.88	38.2
23JUN2022	110	176	1	287	38.33	39.0
24JUN2022	120	144		264	45.45	39.4
25JUN2022	78	115		193	40.41	38.9
26JUN2022	86	92		178	48.31	40.2
27JUN2022	112	193		305	36.72	39.4
28JUN2022	100	153	1	254	39.37	40.6
29JUN2022	118	229	2	349	33.81	40.3
30JUN2022	110	162		272	40.44	40.6
01JUL2022	96	161	1	258	37.21	39.5
02JUL2022	56	133	1	190	29.47	37.9

Note: Testing Data includes a 3 day delay

**Investigations are ongoing; data are subject to change.
Reporting through 04JUL2022**

North Las Vegas zip codes include 89030, 89031, 89032, 89033, 89036, 89081, 89084, 89085, 89086, 89087.

COVID19 Hospitalizations for North Las Vegas, 7-Day Moving Average



Investigations are ongoing; data are subject to change.

Reporting through 04JUL2022

North Las Vegas zip codes include 89030, 89031, 89032, 89033, 89036, 89081, 89084, 89085, 89086, 89087.

Table 3: New COVID19-Related Hospitalizations and 7-Day Moving Average in North Las Vegas, previous month

Week	Hospitalizations	7-Day Moving Average
05JUN2022	5	5.71
12JUN2022	2	5.57
19JUN2022	3	5.14
26JUN2022	1	4.57

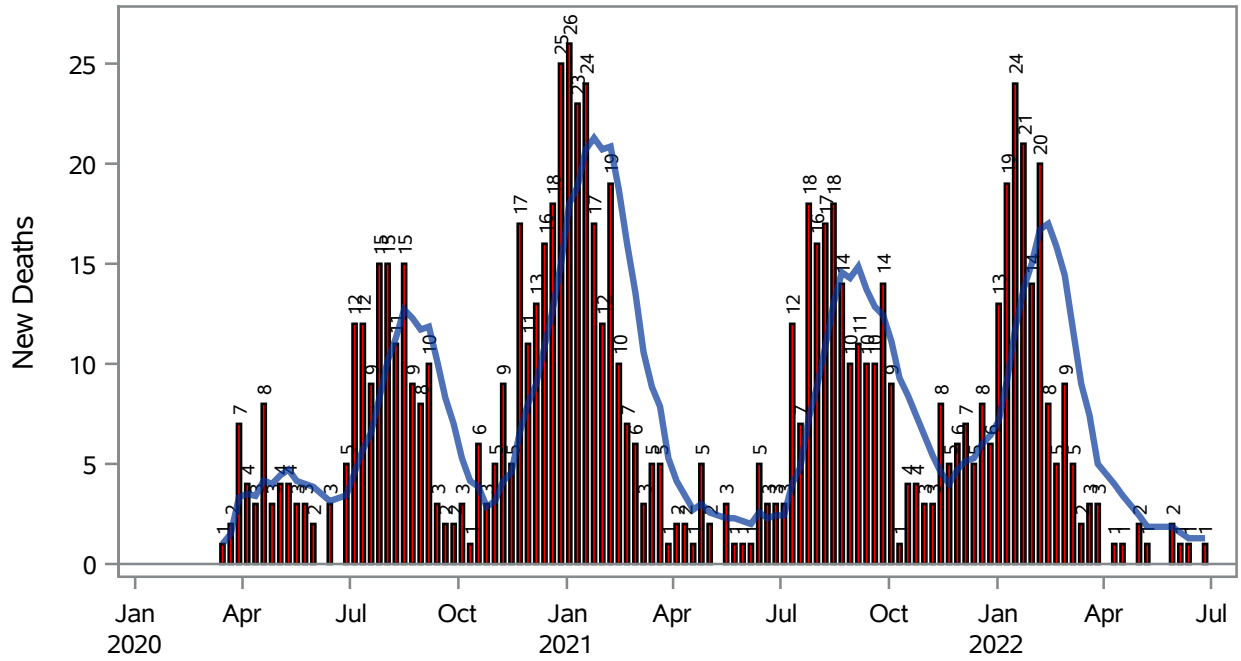
Note1: Admission Date is calculated as follows based on completed information:
A) COVID19 Case is hospitalized B) COVID19 Case has a hospital admission date.

If admission date is missing, then the following is substituted temporarily, in order:
1) Disease onset date 2) Disease diagnosis date 3) Lab result collection date 4) Report date to SNHD.

**Investigations are ongoing; data are subject to change.
Reporting through 04JUL2022**

North Las Vegas zip codes include 89030, 89031, 89032, 89033, 89036, 89081, 89084, 89085, 89086, 89087.

COVID19 Deaths for North Las Vegas, 7-Day Moving Average



■ New Deaths — 7-Day Moving Average

Investigations are ongoing; data are subject to change.

Reporting through 04JUL2022

North Las Vegas zip codes include 89030, 89031, 89032, 89033, 89036, 89081, 89084, 89085, 89086, 89087.

Table 4: New COVID19-Related Deaths and 7-Day Moving Average in North Las Vegas, Previous Month

Week	Deaths	7-Day Moving Average
05JUN2022	1	1.57
12JUN2022	1	1.29
26JUN2022	1	1.29

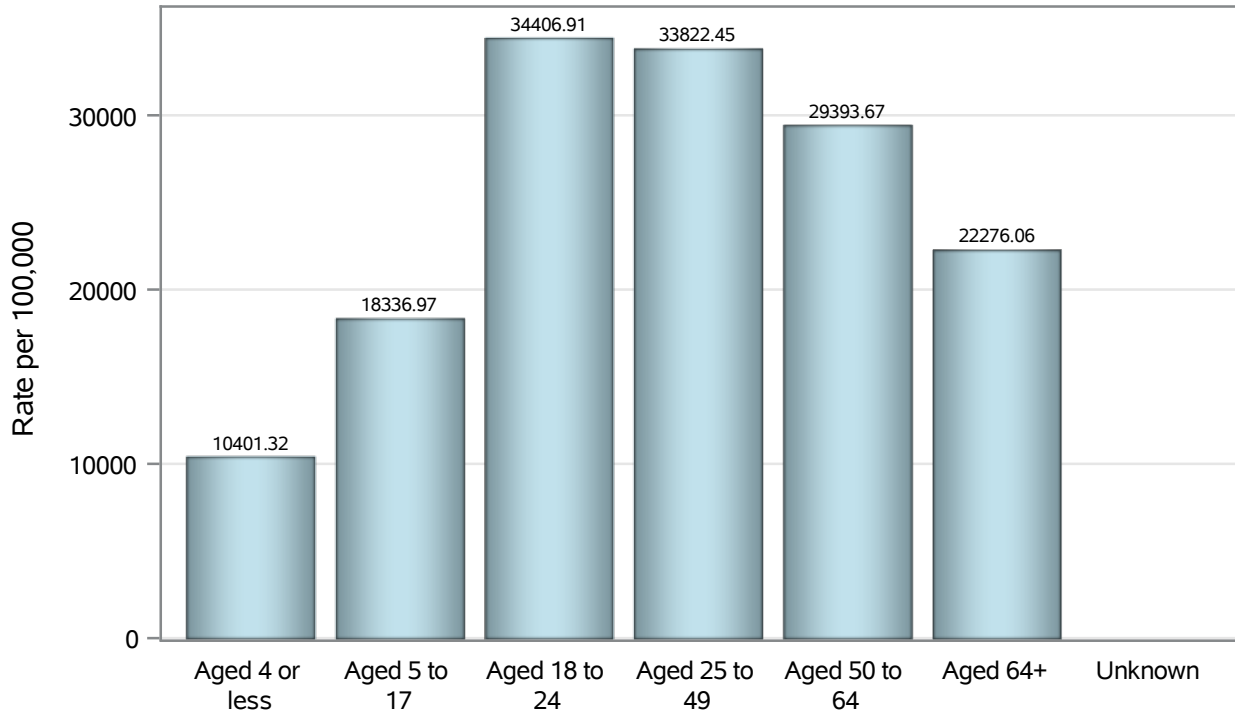
Note1: Date of Death is calculated as follows based on completed information:
A) COVID19 Case is reported as deceased B) COVID19 Case has a reported date of death.

If date of death is missing, then the following is substituted temporarily, in order:
1) Disease onset date 2) Disease diagnosis date
3) Lab result collection date 4) Report date to SNHD.

**Investigations are ongoing; data are subject to change.
Reporting through 04JUL2022**

North Las Vegas zip codes include 89030, 89031, 89032, 89033, 89036, 89081, 89084, 89085, 89086, 89087.

Case Age Rates in North Las Vegas

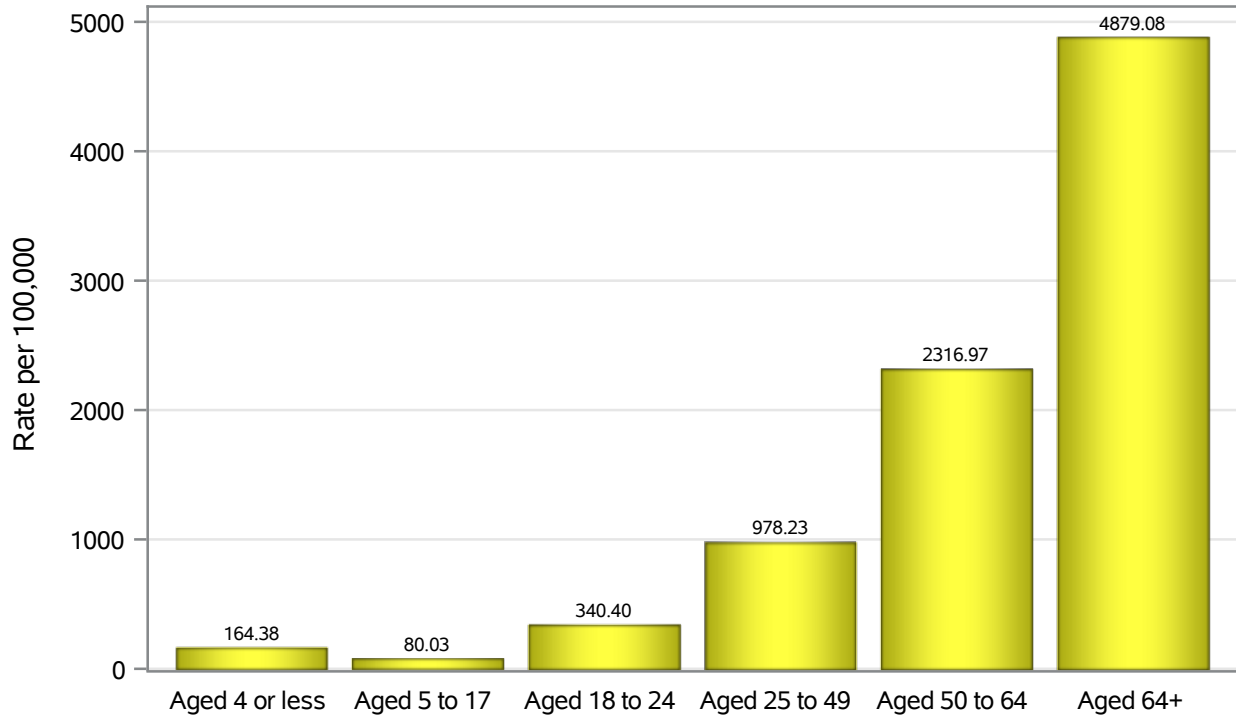


Investigations are ongoing; data are subject to change.

Reporting through 04JUL2022

North Las Vegas zip codes include 89030, 89031, 89032, 89033, 89036, 89081, 89084, 89085, 89086, 89087.

Hospitalization Age Rates in North Las Vegas

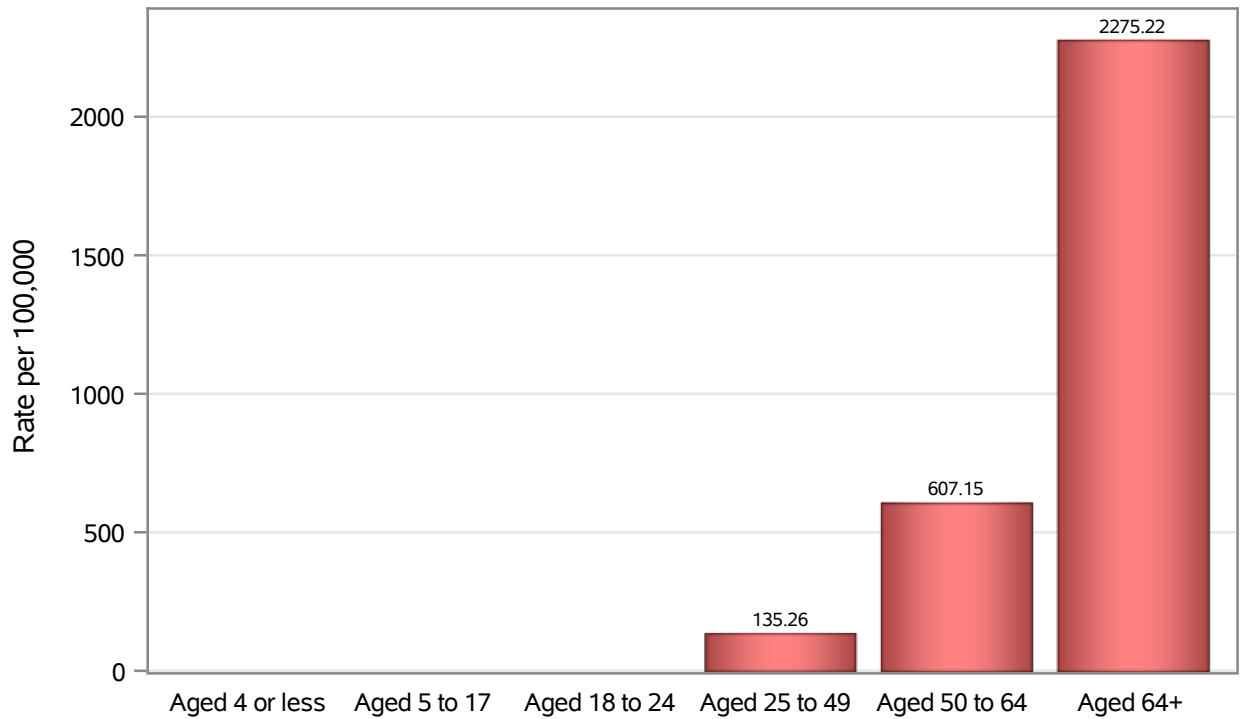


Investigations are ongoing; data are subject to change.

Reporting through 04JUL2022

North Las Vegas zip codes include 89030, 89031, 89032, 89033, 89036, 89081, 89084, 89085, 89086, 89087.

Death Age Rates in North Las Vegas



Investigations are ongoing; data are subject to change.

Reporting through 04JUL2022

North Las Vegas zip codes include 89030, 89031, 89032, 89033, 89036, 89081, 89084, 89085, 89086, 89087.

Table 5: Age and COVID19 in North Las Vegas

Case Status	Age Categories	N	%	Population	Rate per 100,000
Cases	Aged 4 or less	1835	2.9	17,642	10401
	Aged 5 to 17	9165	14.6	49,981	18337
	Aged 18 to 24	7884	12.5	22,914	34407
	Aged 25 to 49	28006	44.5	82,803	33822
	Aged 50 to 64	10796	17.1	36,729	29394
	Aged 64+	5287	8.4	23,734	22276
	Unknown	12	0.0	.	.
Hospitalizations	Aged 4 or less	29	1.0	17,642	164.38
	Aged 5 to 17	40	1.3	49,981	80.03
	Aged 18 to 24	78	2.6	22,914	340.40
	Aged 25 to 49	810	27.3	82,803	978.23
	Aged 50 to 64	851	28.7	36,729	2317.0
	Aged 64+	1158	39.0	23,734	4879.1
Deaths	Aged 4 or less	1	0.1	17,642	.
	Aged 5 to 17	1	0.1	49,981	.
	Aged 18 to 24	2	0.2	22,914	.
	Aged 25 to 49	112	12.7	82,803	135.26
	Aged 50 to 64	223	25.4	36,729	607.15
	Aged 64+	540	61.4	23,734	2275.2

Note1: Population data source for calculating rate estimates: U.S. Census Bureau, ACS 5-year estimate.

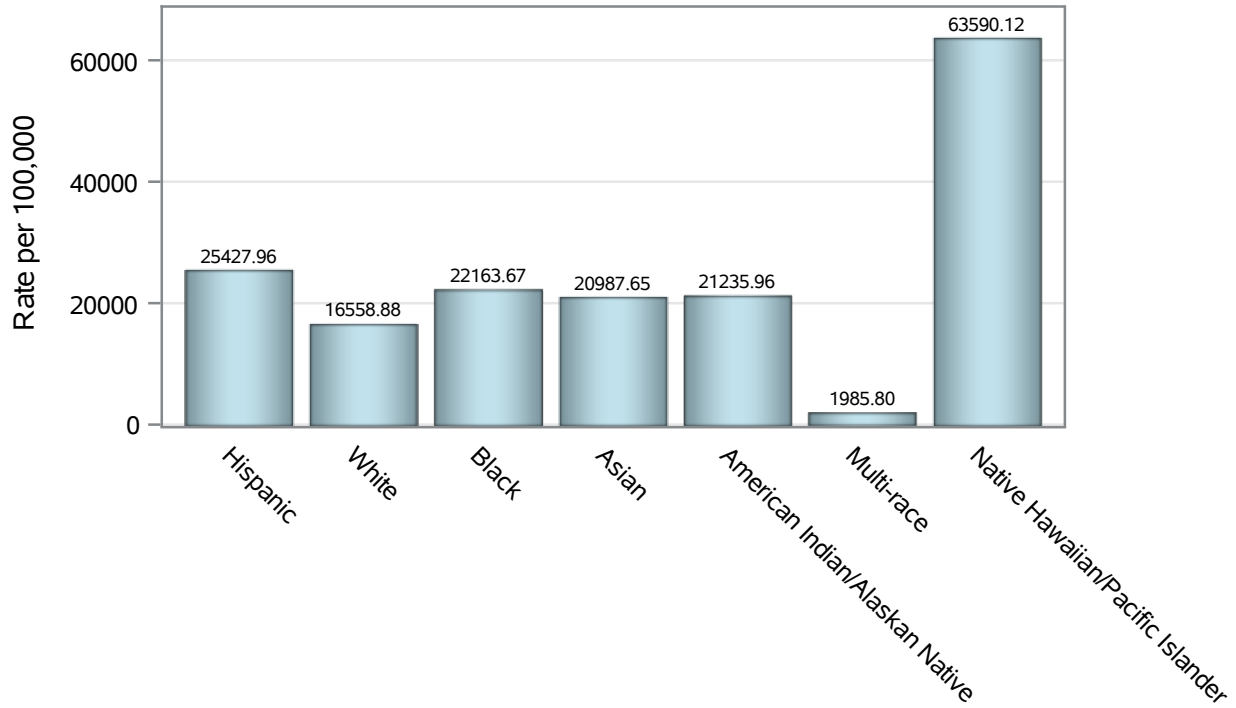
Note2: Rates for categories with fewer than 12 cases are suppressed due to high relative standard error.

Note3: Hospitalizations are regardless of deceased status; Deaths are regardless of hospitalization status

**Investigations are ongoing; data are subject to change.
Reporting through 04JUL2022**

North Las Vegas zip codes include 89030, 89031, 89032, 89033, 89036, 89081, 89084, 89085, 89086, 89087.

Case Race/Ethnicity Rates in North Las Vegas

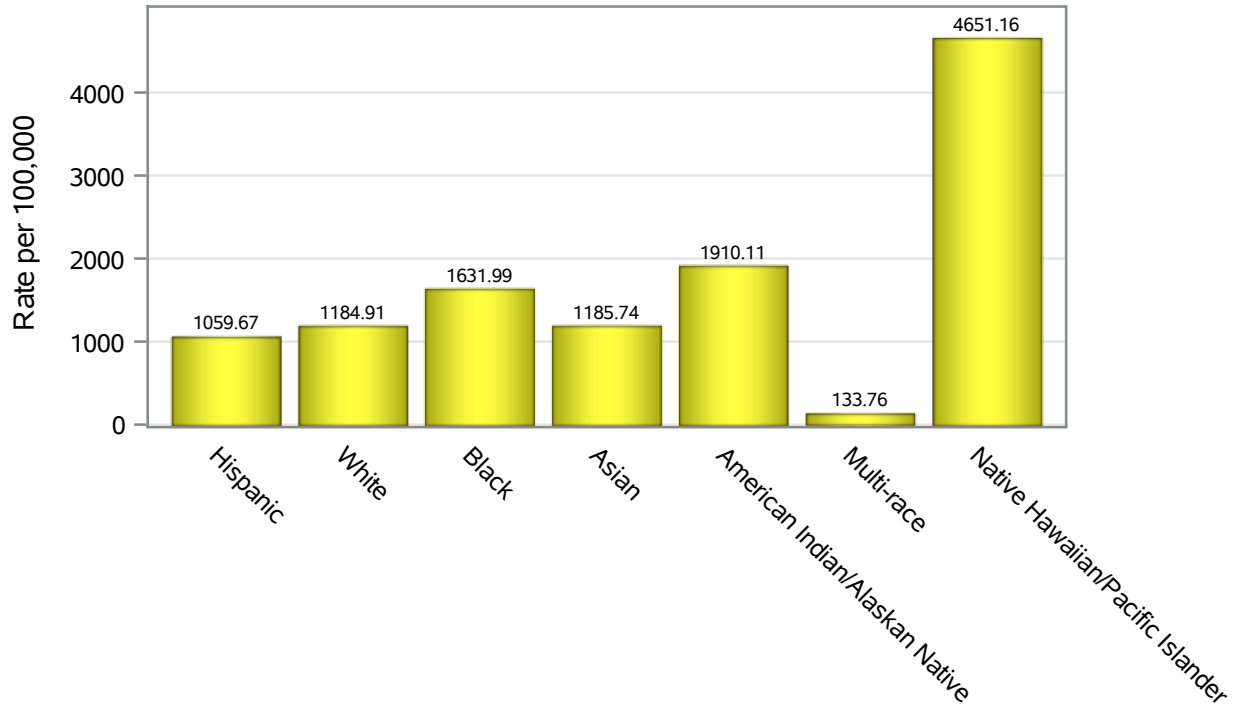


Investigations are ongoing; data are subject to change.

Reporting through 04JUL2022

North Las Vegas zip codes include 89030, 89031, 89032, 89033, 89036, 89081, 89084, 89085, 89086, 89087.

Hospitalization Race/Ethnicity Rates in North Las Vegas

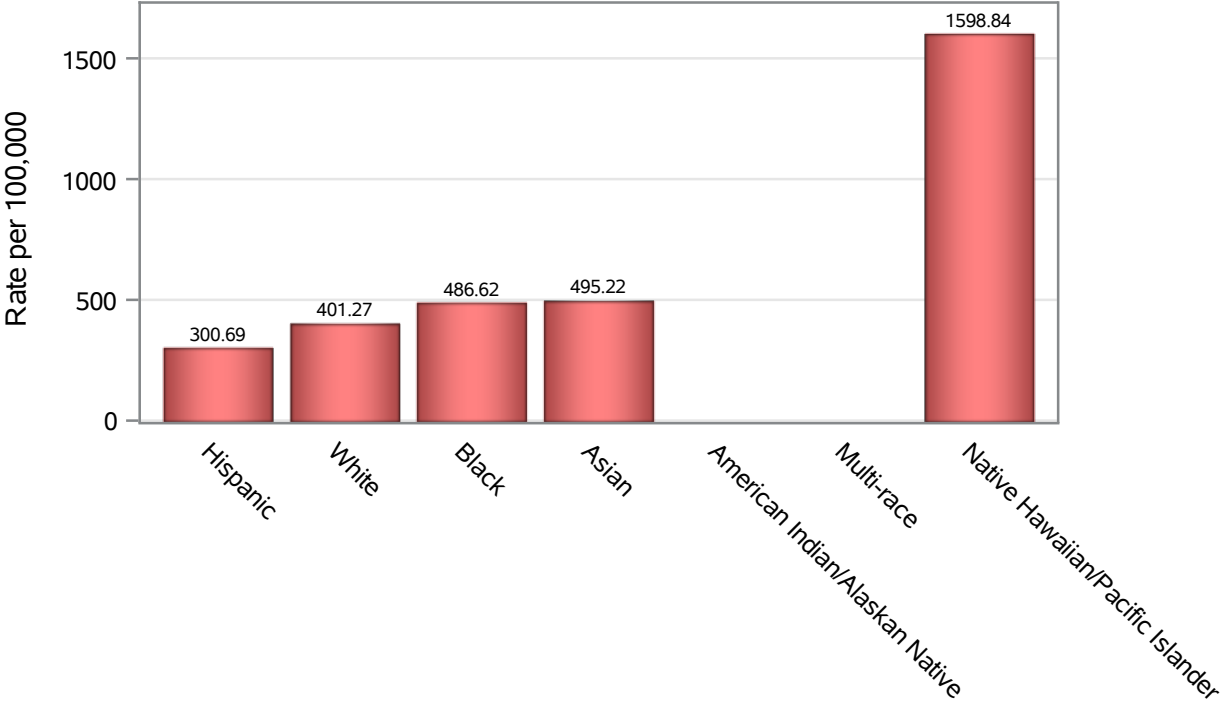


Investigations are ongoing; data are subject to change.

Reporting through 04JUL2022

North Las Vegas zip codes include 89030, 89031, 89032, 89033, 89036, 89081, 89084, 89085, 89086, 89087.

Death Race/Ethnicity Rates in North Las Vegas



Investigations are ongoing; data are subject to change.

Reporting through 04JUL2022

North Las Vegas zip codes include 89030, 89031, 89032, 89033, 89036, 89081, 89084, 89085, 89086, 89087.

Table 6: Race/Ethnicity and COVID19 in North Las Vegas

Case Status	Race Ethnicity Categories	N	%	Population	Rate per 100,000
Cases	Hispanic	24524	38.9	96,445	25428
	White	10523	16.7	63,549	16559
	Black	10430	16.6	47,059	22164
	Asian	3009	4.8	14,337	20988
	American Indian/Alaskan Native	189	0.3	890	21236
	Multi-race	193	0.3	9,719	1985.8
	Native Hawaiian/Pacific Islander	875	1.4	1,376	63590
	Unknown	13242	21.0	.	.
Hospitalizations	Hispanic	1022	34.5	96,445	1059.7
	White	753	25.4	63,549	1184.9
	Black	768	25.9	47,059	1632.0
	Asian	170	5.7	14,337	1185.7
	American Indian/Alaskan Native	17	0.6	890	1910.1
	Multi-race	13	0.4	9,719	133.76
	Native Hawaiian/Pacific Islander	64	2.2	1,376	4651.2
	Unknown	159	5.4	.	.
Deaths	Hispanic	290	33.0	96,445	300.69
	White	255	29.0	63,549	401.27
	Black	229	26.1	47,059	486.62
	Asian	71	8.1	14,337	495.22
	American Indian/Alaskan Native	6	0.7	890	.
	Multi-race	6	0.7	9,719	.
	Native Hawaiian/Pacific Islander	22	2.5	1,376	1598.8

Note1: Population data source for calculating rate estimates: U.S. Census Bureau, ACS 5-year estimate.

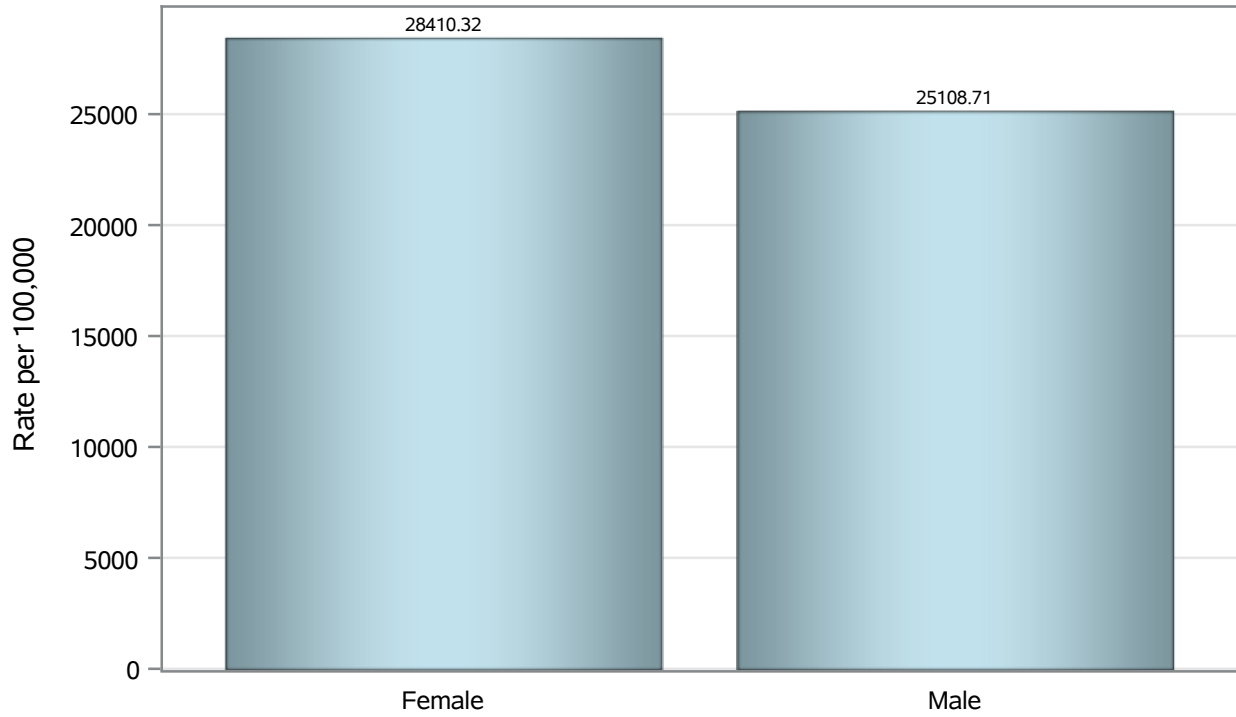
Note2: Rates for categories with fewer than 12 cases are suppressed due to high relative standard error.

Note3: Hospitalizations are regardless of deceased status; Deaths are regardless of hospitalization status

**Investigations are ongoing; data are subject to change.
Reporting through 04JUL2022**

North Las Vegas zip codes include 89030, 89031, 89032, 89033, 89036, 89081, 89084, 89085, 89086, 89087.

Case Birth Sex Rates in North Las Vegas

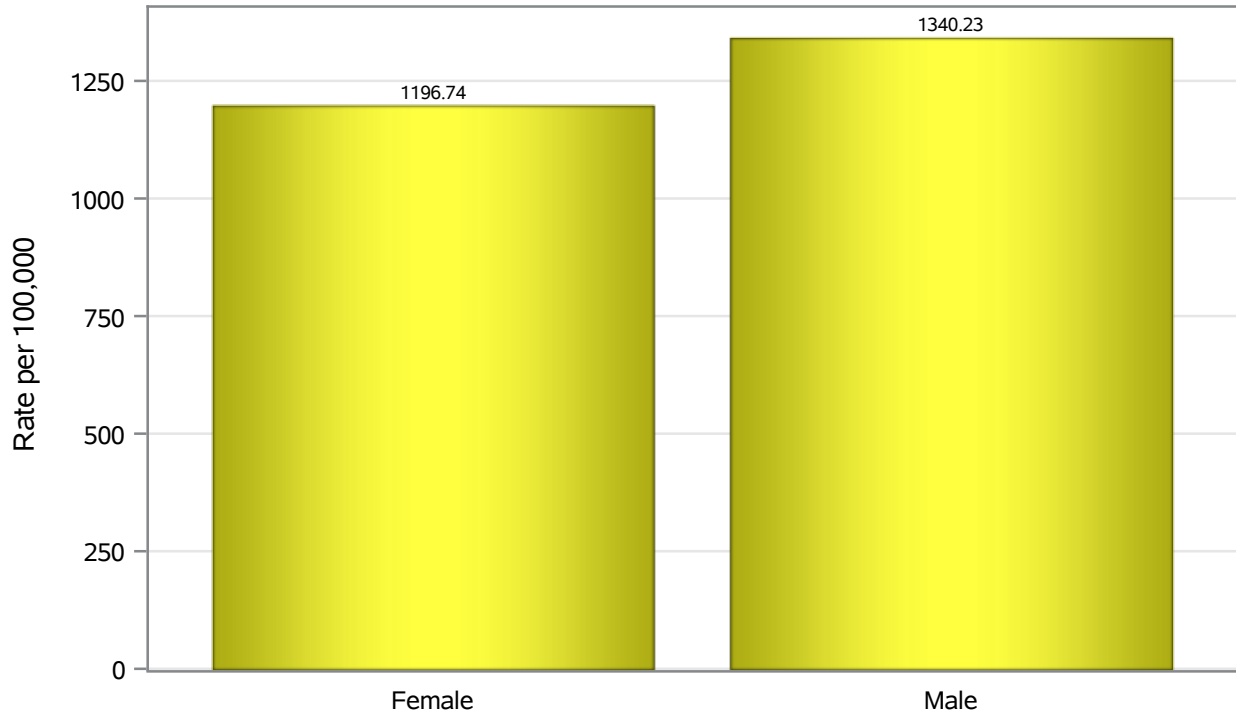


Investigations are ongoing; data are subject to change.

Reporting through 04JUL2022

North Las Vegas zip codes include 89030, 89031, 89032, 89033, 89036, 89081, 89084, 89085, 89086, 89087.

Hospitalization Birth Sex Rates in North Las Vegas

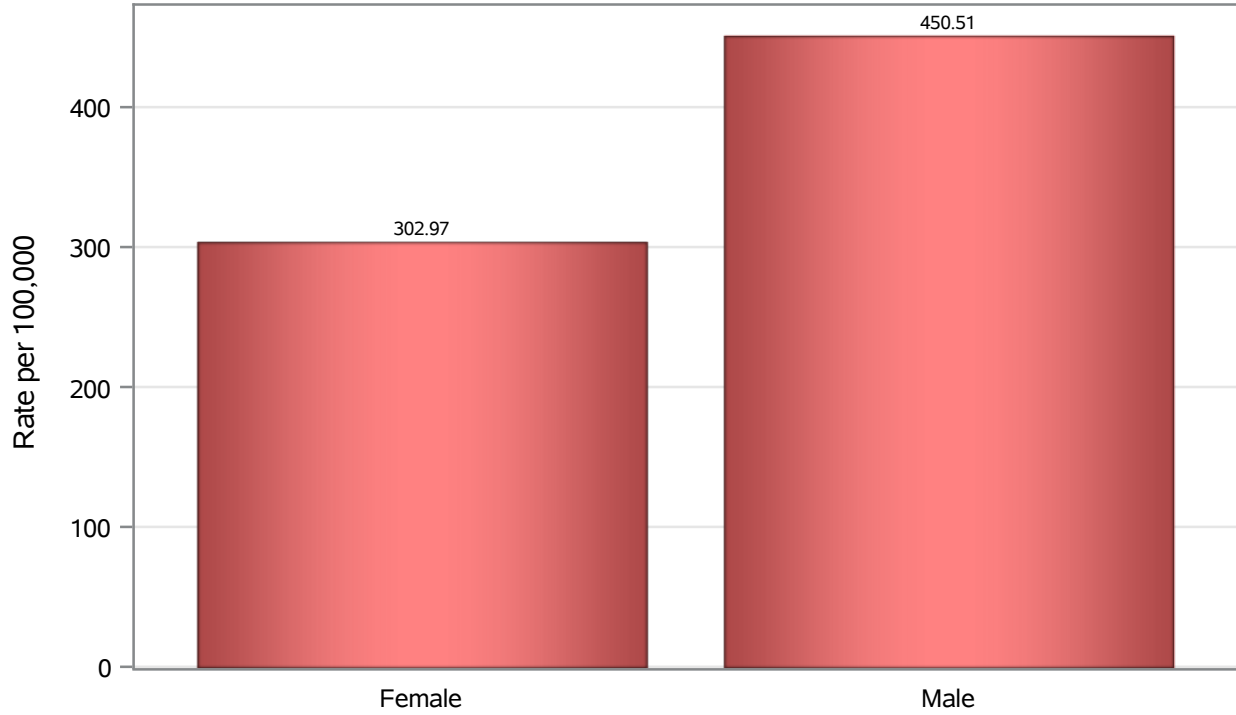


Investigations are ongoing; data are subject to change.

Reporting through 04JUL2022

North Las Vegas zip codes include 89030, 89031, 89032, 89033, 89036, 89081, 89084, 89085, 89086, 89087.

Death Birth Sex Rates in North Las Vegas



Investigations are ongoing; data are subject to change.

Reporting through 04JUL2022

North Las Vegas zip codes include 89030, 89031, 89032, 89033, 89036, 89081, 89084, 89085, 89086, 89087.

Table 7: Birth Sex and COVID19 in North Las Vegas

Case Status	Birth Sex Categories	N	%	Population	Rate per 100,000
Cases	Female	33758	53.6	118823	28410
	Male	28870	45.8	114980	25109
	Unknown	357	0.6	.	.
Hospitalizations	Female	1422	47.9	118823	1196.7
	Male	1541	52.0	114980	1340.2
	Unknown	3	0.1	.	.
Deaths	Female	360	41.0	118823	302.97
	Male	518	58.9	114980	450.51
	Unknown	1	0.1	.	.

Note1: Population data source for calculating rate estimates: U.S. Census Bureau, ACS 5-year estimate.

Note2: Rates for categories with fewer than 12 cases are suppressed due to high relative standard error.

Note3: Hospitalizations are regardless of deceased status; Deaths are regardless of hospitalization status

**Investigations are ongoing; data are subject to change.
Reporting through 04JUL2022**

North Las Vegas zip codes include 89030, 89031, 89032, 89033, 89036, 89081, 89084, 89085, 89086, 89087.