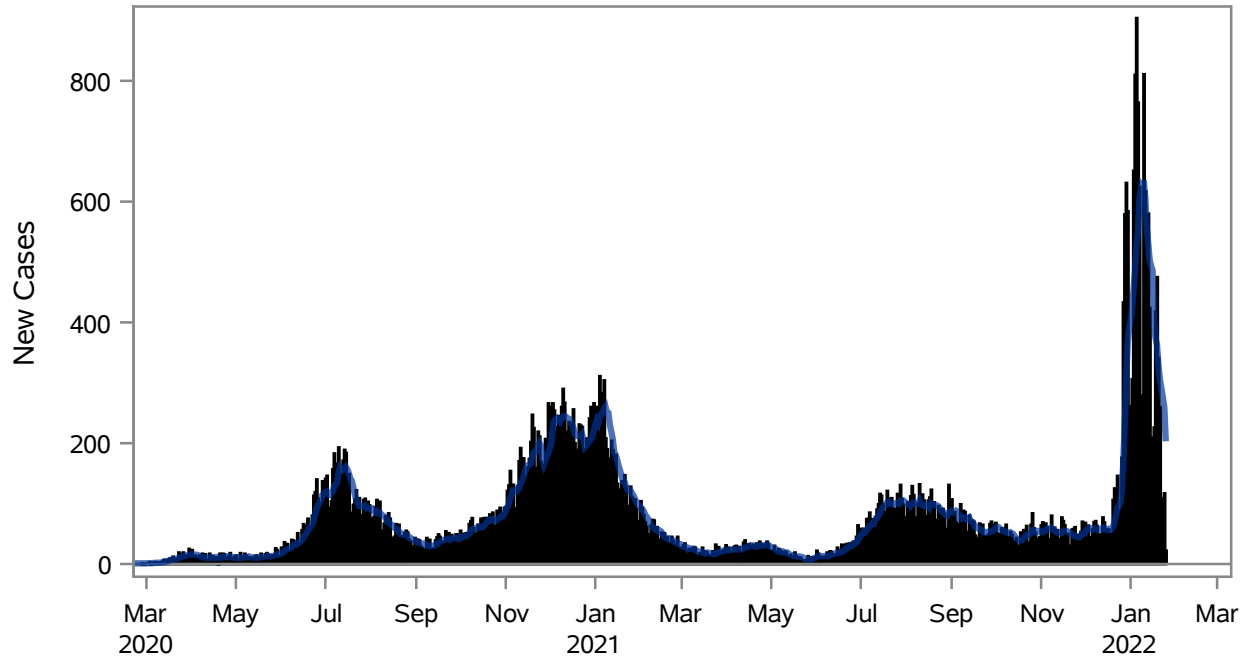


### COVID19 Cases for North Las Vegas, 7-Day Moving Average



■ New Cases    — 7-Day Moving Average

Investigations are ongoing; data are subject to change.

Reporting through 26JAN2022

North Las Vegas zip codes include 89030, 89031, 89032, 89033, 89036, 89081, 89084, 89085, 89086, 89087.

**Table 1: New COVID19 Cases and 7-Day Moving Average in North Las Vegas, Previous Two Weeks**

Date (Daily)	New Cases	7-Day Moving Average
13JAN2022	580	532.00
14JAN2022	424	503.43
15JAN2022	209	493.43
16JAN2022	208	486.71
17JAN2022	226	403.14
18JAN2022	418	374.71
19JAN2022	475	362.86
20JAN2022	341	328.71
21JAN2022	260	305.29
22JAN2022	109	291.00
23JAN2022	98	275.29
24JAN2022	117	259.71

---

Note1: Event Date is calculated as follows based on completed information:

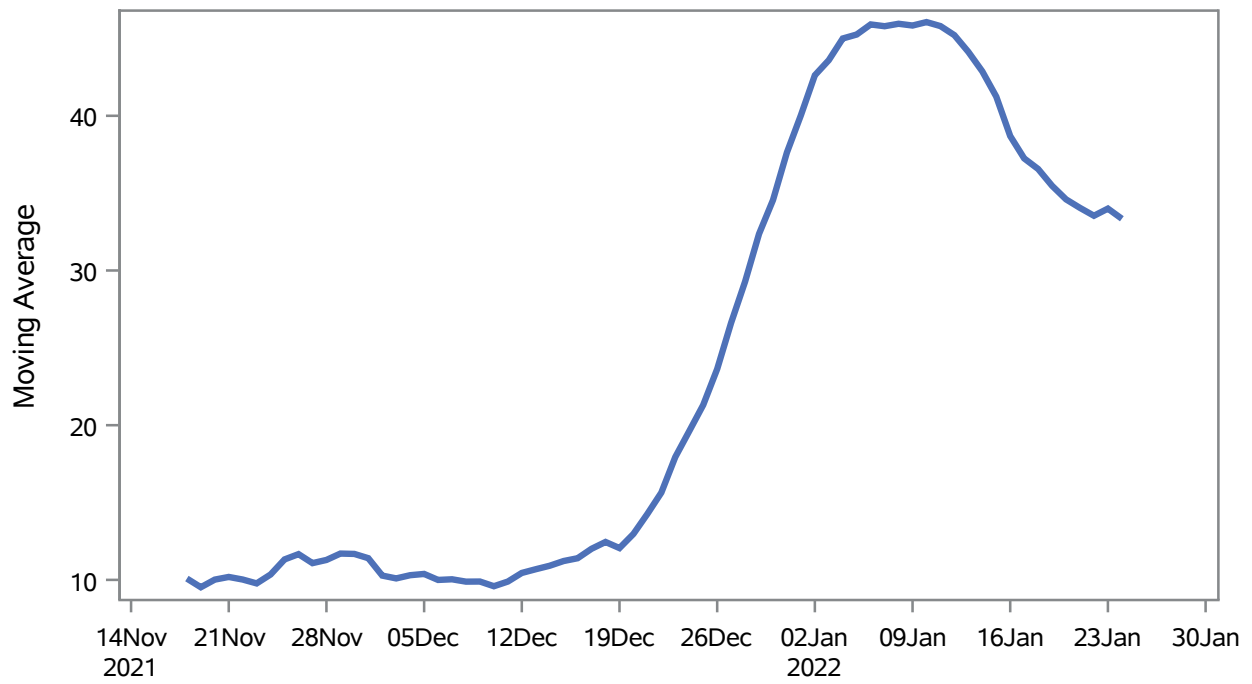
1) Disease onset date 2) Disease diagnosis date 3) Lab result collection date 4) Report date to SNHD.

---

**Investigations are ongoing; data are subject to change.  
Reporting through 26JAN2022**

**North Las Vegas zip codes include 89030, 89031, 89032, 89033, 89036, 89081, 89084, 89085, 89086, 89087.**

### Percent of People Receiving COVID-19 Viral Tests Who Have Positive Results in North Las Vegas



Investigations are ongoing; data are subject to change.

Reporting through 26JAN2022

North Las Vegas zip codes include 89030, 89031, 89032, 89033, 89036, 89081, 89084, 89085, 89086, 89087.

**Table 2: Percent of People Receiving COVID-19 Viral Tests Who Have Positive Results in North Las Vegas**

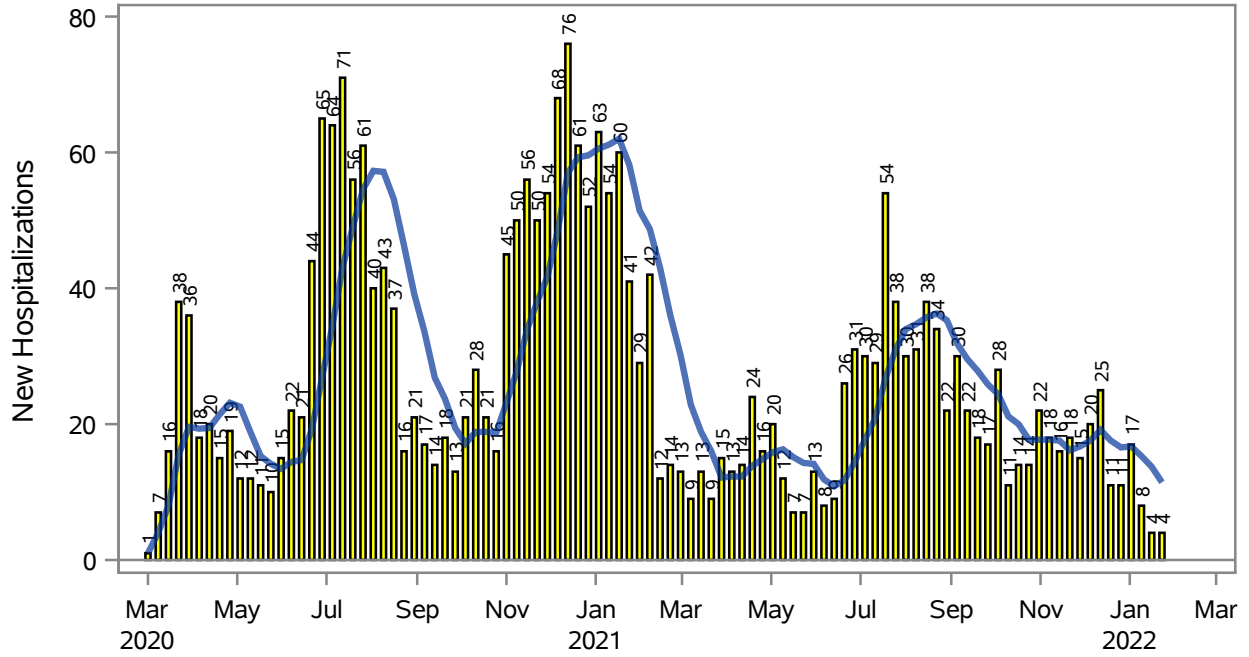
Collection Date	Positive	Negative	Equivocal	Total	% Positivity	7-Day Moving Average
10JAN2022	1288	1467	3	2790	46.16	46.1
11JAN2022	1104	1298	4	2443	45.19	45.8
12JAN2022	946	1442	3	2423	39.04	45.2
13JAN2022	968	1548	3	2550	37.96	44.1
14JAN2022	734	1196	2	1957	37.51	42.9
15JAN2022	352	688	4	1044	33.72	41.2
16JAN2022	322	698	1	1030	31.26	38.7
17JAN2022	378	662	9	1049	36.03	37.2
18JAN2022	842	1195	4	2084	40.40	36.6
19JAN2022	858	1824	4	2729	31.44	35.5
20JAN2022	646	1357	2	2030	31.82	34.6
21JAN2022	506	981	1	1504	33.64	34.0
22JAN2022	235	542	2	779	30.17	33.5
23JAN2022	210	398	1	609	34.48	34.0
24JAN2022	502	1075	1	1596	31.45	33.3

Note: Testing Data includes a 3 day delay

**Investigations are ongoing; data are subject to change.  
Reporting through 26JAN2022**

**North Las Vegas zip codes include 89030, 89031, 89032, 89033, 89036, 89081, 89084, 89085, 89086, 89087.**

### COVID19 Hospitalizations for North Las Vegas, 7-Day Moving Average



New Hospitalizations
  7-Day Moving Average

Investigations are ongoing; data are subject to change.

Reporting through 26JAN2022

North Las Vegas zip codes include 89030, 89031, 89032, 89033, 89036, 89081, 89084, 89085, 89086, 89087.

**Table 3: New COVID19-Related Hospitalizations and 7-Day Moving Average in North Las Vegas, previous month**

Week	Hospitalizations	7-Day Moving Average
02JAN2022	17	16.7
09JAN2022	8	15.3
16JAN2022	4	13.7
23JAN2022	4	11.4

---

Note1: Admission Date is calculated as follows based on completed information:  
A) COVID19 Case is hospitalized B) COVID19 Case has a hospital admission date.

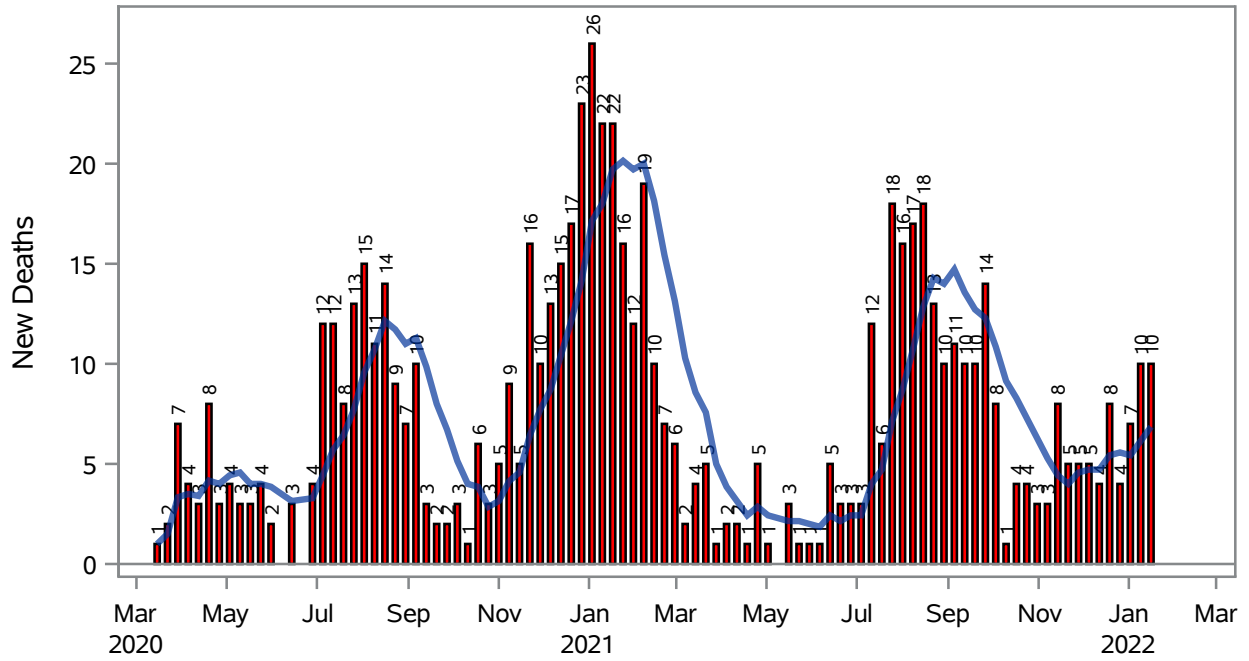
If admission date is missing, then the following is substituted temporarily, in order:  
1) Disease onset date 2) Disease diagnosis date 3) Lab result collection date 4) Report date to SNHD.

---

**Investigations are ongoing; data are subject to change.  
Reporting through 26JAN2022**

**North Las Vegas zip codes include 89030, 89031, 89032, 89033, 89036, 89081, 89084, 89085, 89086, 89087.**

### COVID19 Deaths for North Las Vegas, 7-Day Moving Average



■ New Deaths      — 7-Day Moving Average

Investigations are ongoing; data are subject to change.

Reporting through 26JAN2022

North Las Vegas zip codes include 89030, 89031, 89032, 89033, 89036, 89081, 89084, 89085, 89086, 89087.

**Table 4: New COVID19-Related Deaths and 7-Day Moving Average in North Las Vegas, Previous Month**

Week	Deaths	7-Day Moving Average
02JAN2022	7	5.43
09JAN2022	10	6.14
16JAN2022	10	6.86

---

Note1: Date of Death is calculated as follows based on completed information:  
A) COVID19 Case is reported as deceased B) COVID19 Case has a reported date of death.

If date of death is missing, then the following is substituted temporarily, in order:  
1) Disease onset date 2) Disease diagnosis date  
3) Lab result collection date 4) Report date to SNHD.

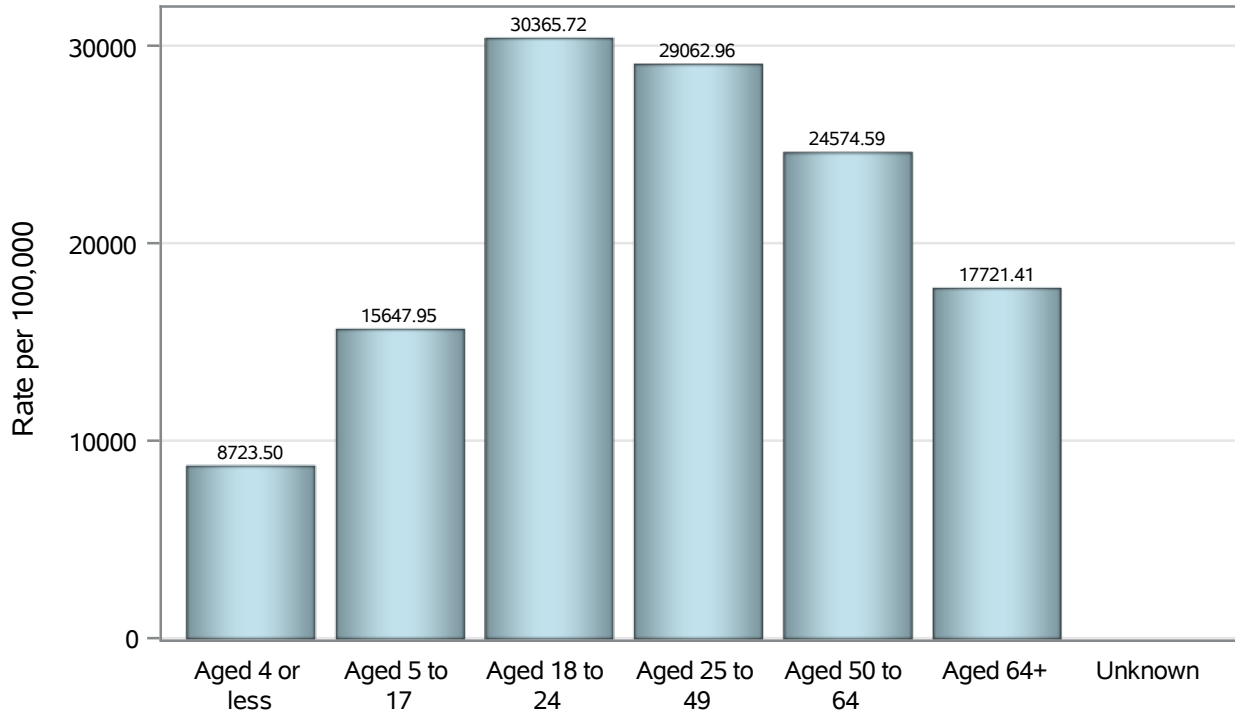
---

**Investigations are ongoing; data are subject to change.  
Reporting through 26JAN2022**

**North Las Vegas zip codes include 89030, 89031, 89032, 89033, 89036, 89081, 89084, 89085, 89086, 89087.**



### Case Age Rates in North Las Vegas

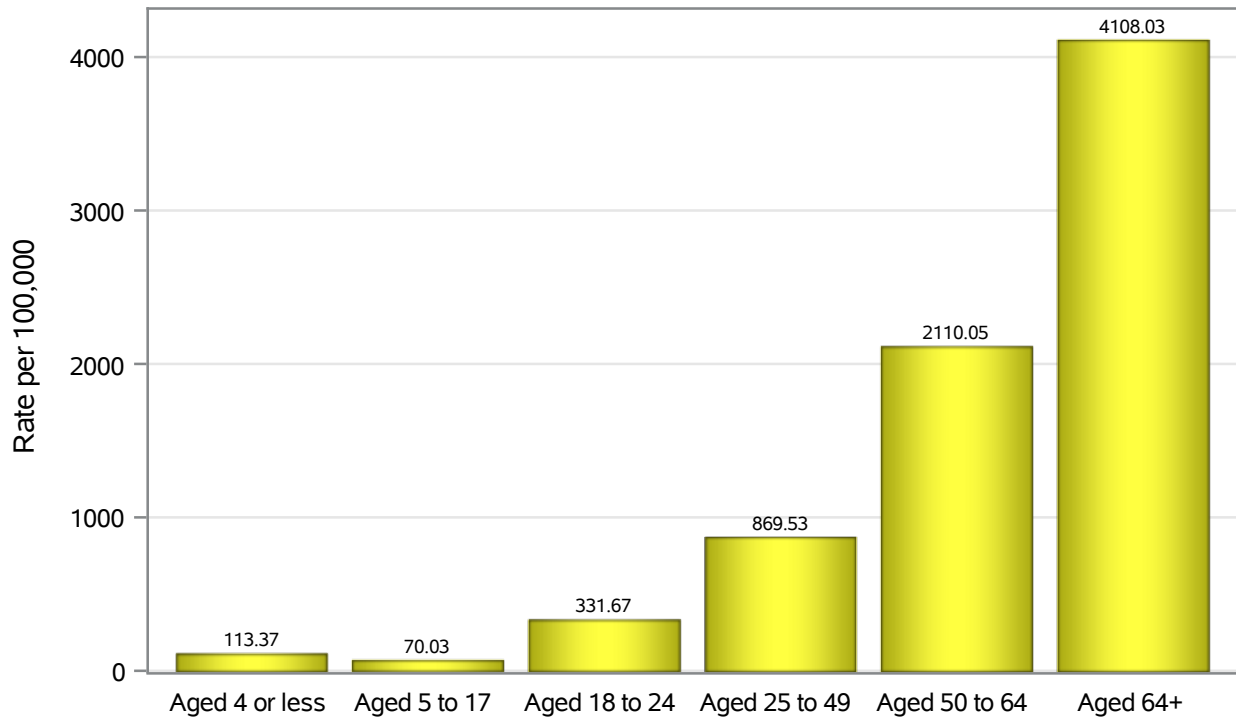


Investigations are ongoing; data are subject to change.

Reporting through 26JAN2022

North Las Vegas zip codes include 89030, 89031, 89032, 89033, 89036, 89081, 89084, 89085, 89086, 89087.

### Hospitalization Age Rates in North Las Vegas

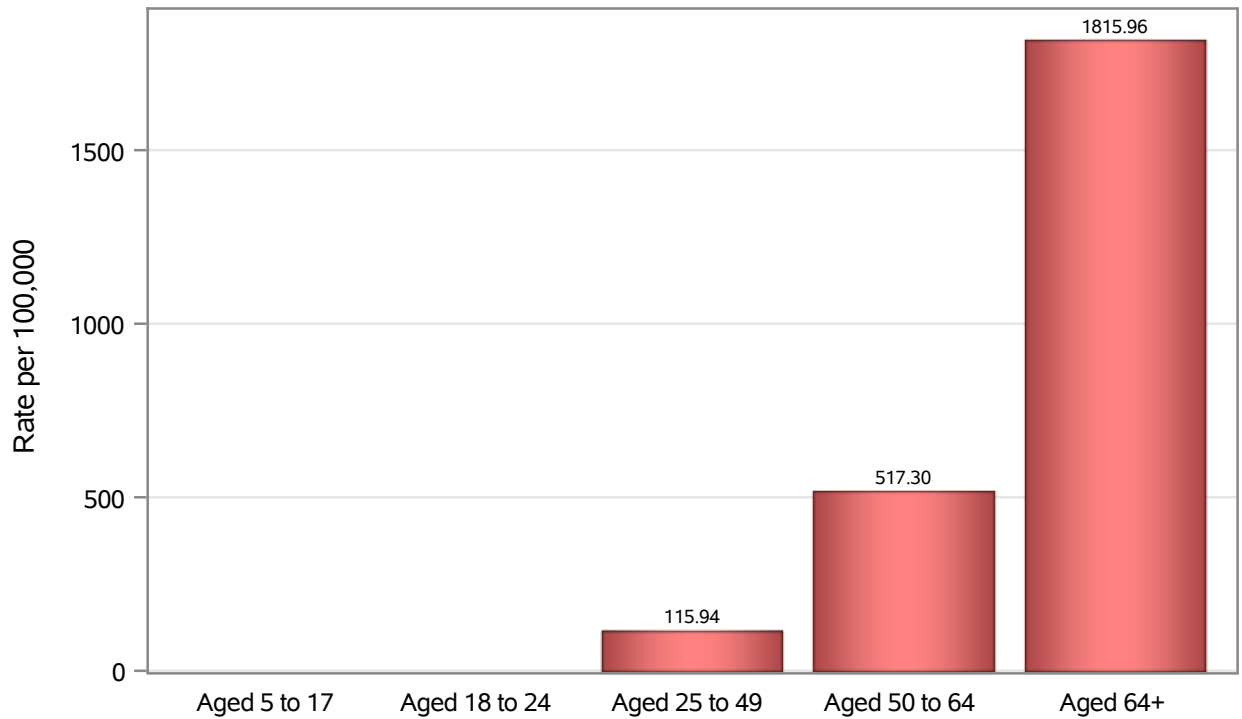


Investigations are ongoing; data are subject to change.

Reporting through 26JAN2022

North Las Vegas zip codes include 89030, 89031, 89032, 89033, 89036, 89081, 89084, 89085, 89086, 89087.

### Death Age Rates in North Las Vegas



Investigations are ongoing; data are subject to change.

Reporting through 26JAN2022

North Las Vegas zip codes include 89030, 89031, 89032, 89033, 89036, 89081, 89084, 89085, 89086, 89087.

**Table 5: Age and COVID19 in North Las Vegas**

Case Status	Age Categories	N	%	Population	Rate per 100,000
Cases	Aged 4 or less	1539	2.9	17,642	8723.5
	Aged 5 to 17	7821	14.6	49,981	15648
	Aged 18 to 24	6958	13.0	22,914	30366
	Aged 25 to 49	24065	44.9	82,803	29063
	Aged 50 to 64	9026	16.8	36,729	24575
	Aged 64+	4206	7.8	23,734	17721
	Unknown	6	0.0	.	.
Hospitalizations	Aged 4 or less	20	0.8	17,642	113.37
	Aged 5 to 17	35	1.3	49,981	70.03
	Aged 18 to 24	76	2.9	22,914	331.67
	Aged 25 to 49	720	27.7	82,803	869.53
	Aged 50 to 64	775	29.8	36,729	2110.0
	Aged 64+	975	37.5	23,734	4108.0
Deaths	Aged 5 to 17	1	0.1	49,981	.
	Aged 18 to 24	1	0.1	22,914	.
	Aged 25 to 49	96	13.4	82,803	115.94
	Aged 50 to 64	190	26.4	36,729	517.30
	Aged 64+	431	59.9	23,734	1816.0

Note1: Population data source for calculating rate estimates: U.S. Census Bureau, ACS 5-year estimate.

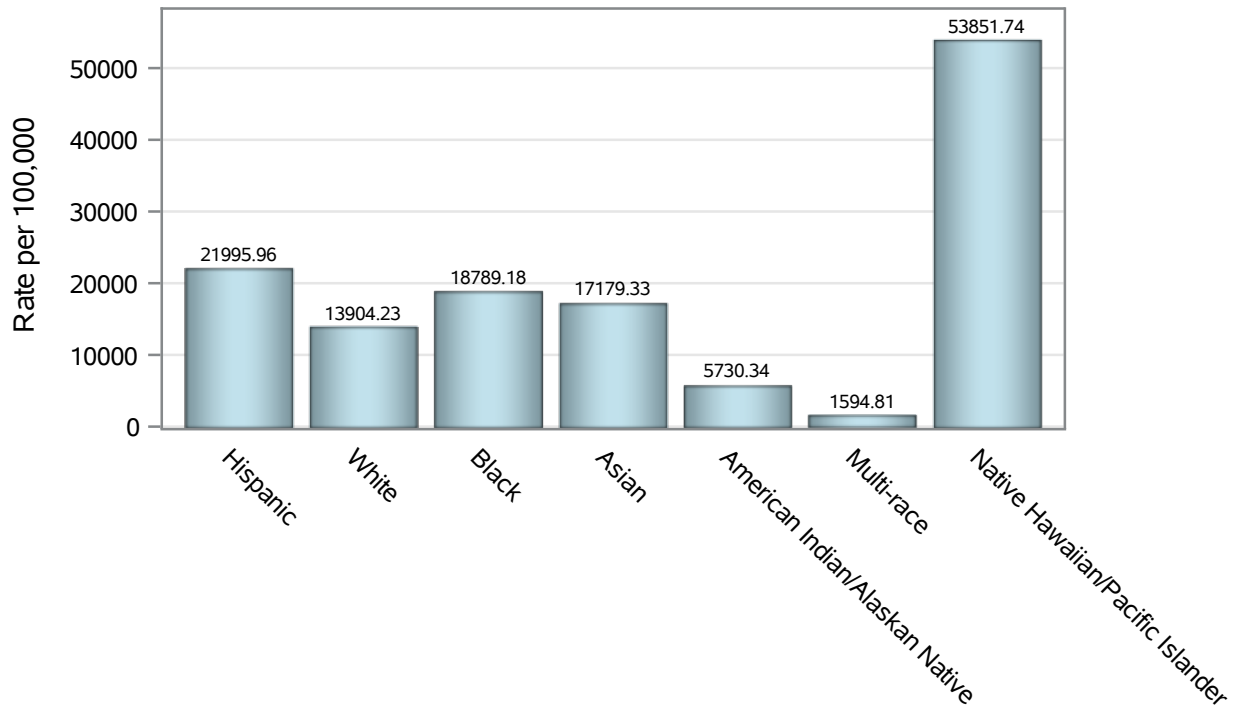
Note2: Rates for categories with fewer than 12 cases are suppressed due to high relative standard error.

Note3: Hospitalizations are regardless of deceased status; Deaths are regardless of hospitalization status

**Investigations are ongoing; data are subject to change.  
Reporting through 26JAN2022**

**North Las Vegas zip codes include 89030, 89031, 89032, 89033, 89036, 89081, 89084, 89085, 89086, 89087.**

### Case Race/Ethnicity Rates in North Las Vegas

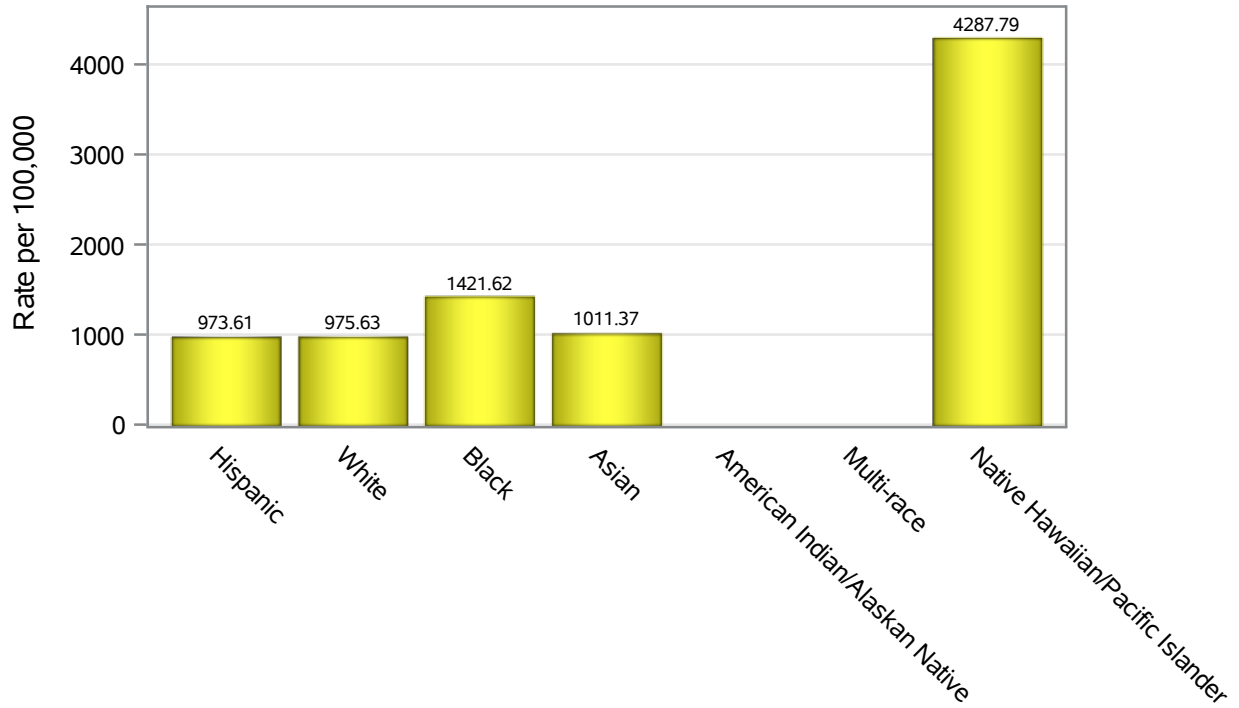


Investigations are ongoing; data are subject to change.

Reporting through 26JAN2022

North Las Vegas zip codes include 89030, 89031, 89032, 89033, 89036, 89081, 89084, 89085, 89086, 89087.

### Hospitalization Race/Ethnicity Rates in North Las Vegas

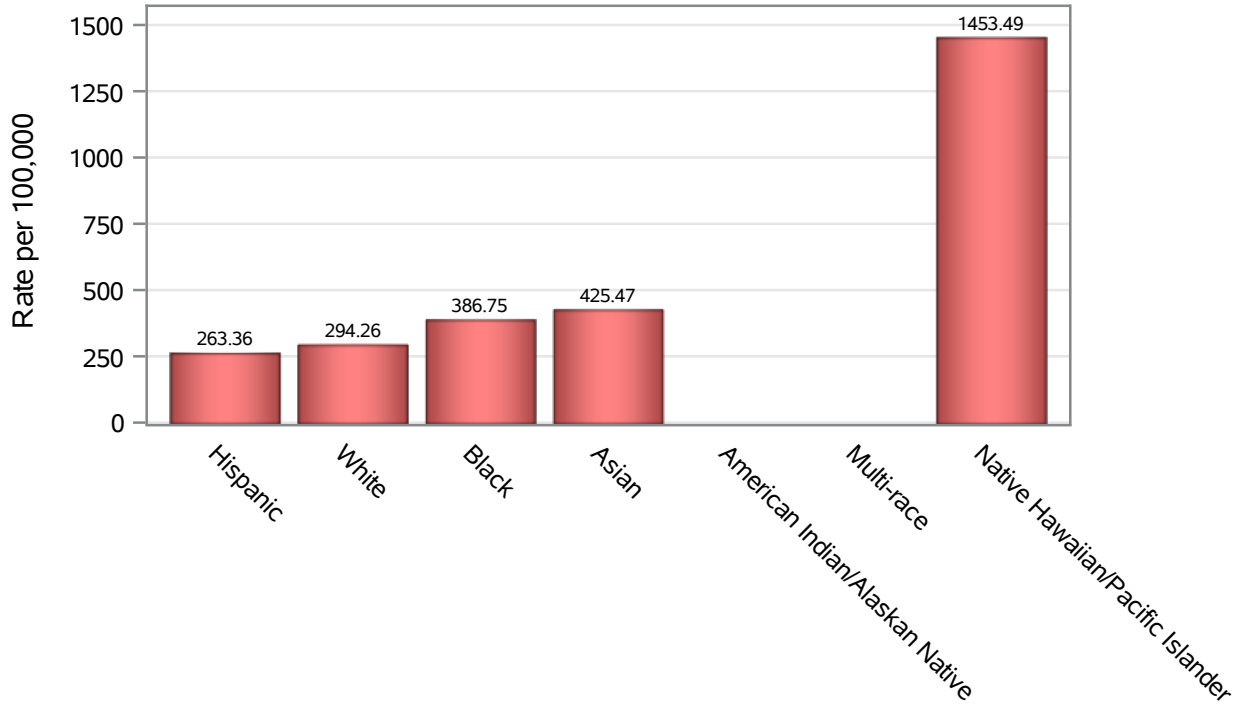


Investigations are ongoing; data are subject to change.

Reporting through 26JAN2022

North Las Vegas zip codes include 89030, 89031, 89032, 89033, 89036, 89081, 89084, 89085, 89086, 89087.

### Death Race/Ethnicity Rates in North Las Vegas



Investigations are ongoing; data are subject to change.

Reporting through 26JAN2022

North Las Vegas zip codes include 89030, 89031, 89032, 89033, 89036, 89081, 89084, 89085, 89086, 89087.

**Table 6: Race/Ethnicity and COVID19 in North Las Vegas**

Case Status	Race Ethnicity Categories	N	%	Population	Rate per 100,000
Cases	Hispanic	21214	39.6	96,445	21996
	White	8836	16.5	63,549	13904
	Black	8842	16.5	47,059	18789
	Asian	2463	4.6	14,337	17179
	American Indian/Alaskan Native	51	0.1	890	5730.3
	Multi-race	155	0.3	9,719	1594.8
	Native Hawaiian/Pacific Islander	741	1.4	1,376	53852
	Unknown	11319	21.1	.	.
Hospitalizations	Hispanic	939	36.1	96,445	973.61
	White	620	23.8	63,549	975.63
	Black	669	25.7	47,059	1421.6
	Asian	145	5.6	14,337	1011.4
	American Indian/Alaskan Native	9	0.3	890	.
	Multi-race	9	0.3	9,719	.
	Native Hawaiian/Pacific Islander	59	2.3	1,376	4287.8
	Unknown	151	5.8	.	.
Deaths	Hispanic	254	35.3	96,445	263.36
	White	187	26.0	63,549	294.26
	Black	182	25.3	47,059	386.75
	Asian	61	8.5	14,337	425.47
	American Indian/Alaskan Native	4	0.6	890	.
	Multi-race	5	0.7	9,719	.
	Native Hawaiian/Pacific Islander	20	2.8	1,376	1453.5
	Unknown	6	0.8	.	.

Note1: Population data source for calculating rate estimates: U.S. Census Bureau, ACS 5-year estimate.

Note2: Rates for categories with fewer than 12 cases are suppressed due to high relative standard error.

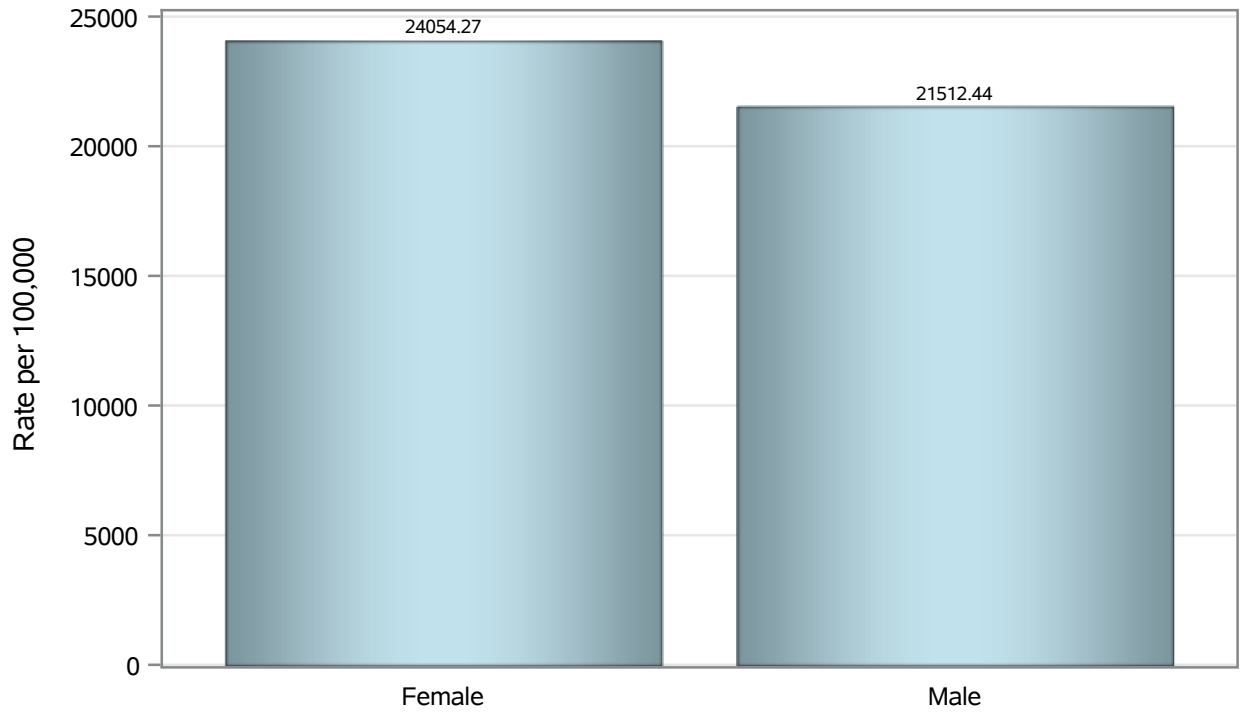
Note3: Hospitalizations are regardless of deceased status; Deaths are regardless of hospitalization status

**Investigations are ongoing; data are subject to change.  
Reporting through 26JAN2022**

**North Las Vegas zip codes include 89030, 89031, 89032, 89033, 89036, 89081, 89084, 89085, 89086, 89087.**



### Case Birth Sex Rates in North Las Vegas

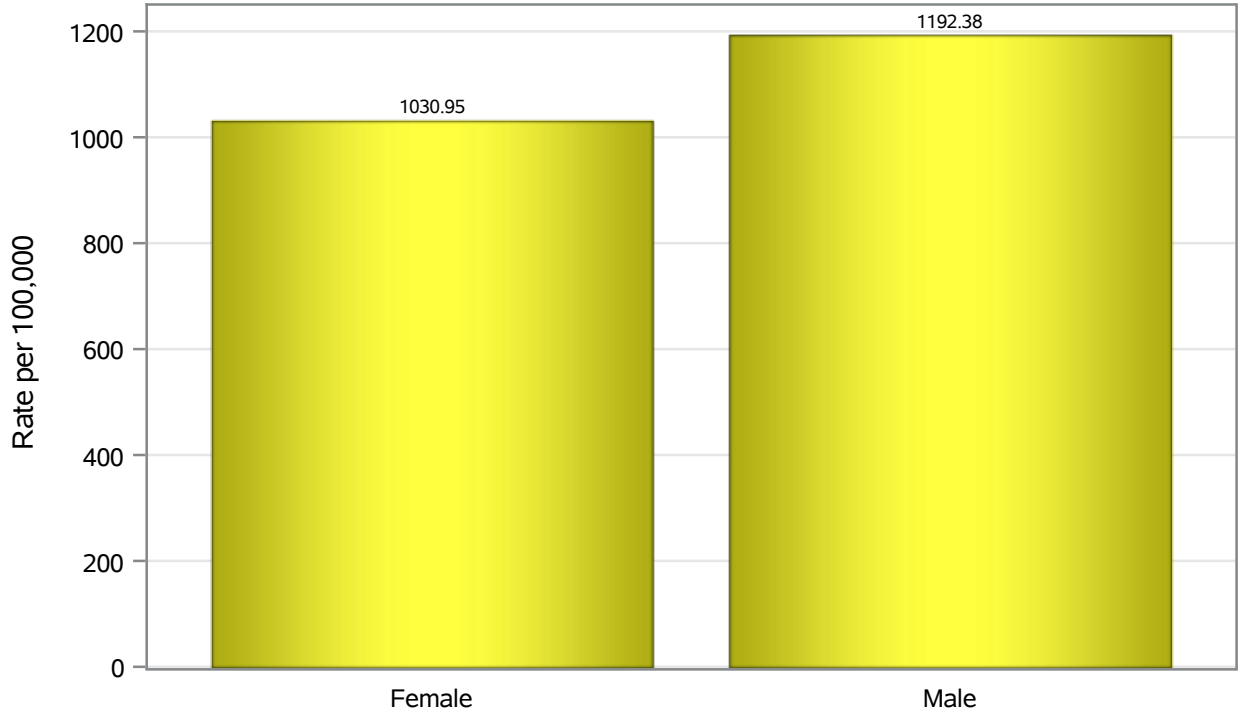


Investigations are ongoing; data are subject to change.

Reporting through 26JAN2022

North Las Vegas zip codes include 89030, 89031, 89032, 89033, 89036, 89081, 89084, 89085, 89086, 89087.

### Hospitalization Birth Sex Rates in North Las Vegas

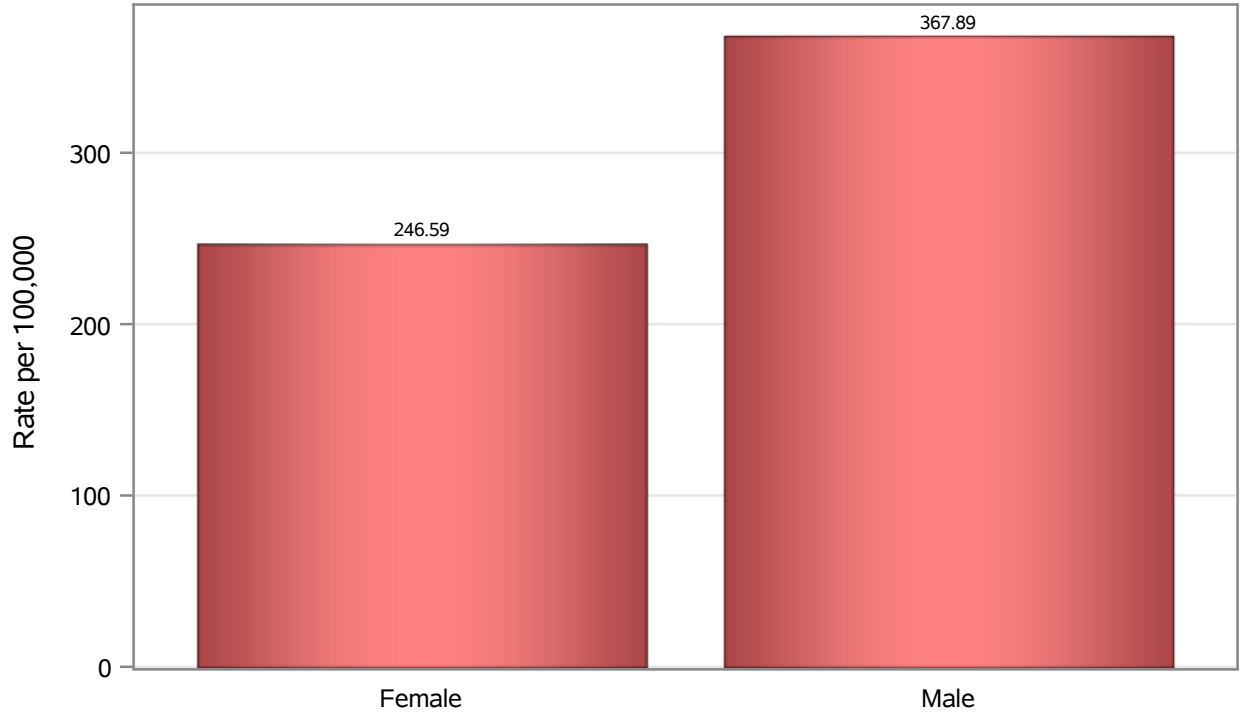


Investigations are ongoing; data are subject to change.

Reporting through 26JAN2022

North Las Vegas zip codes include 89030, 89031, 89032, 89033, 89036, 89081, 89084, 89085, 89086, 89087.

### Death Birth Sex Rates in North Las Vegas



Investigations are ongoing; data are subject to change.

Reporting through 26JAN2022

North Las Vegas zip codes include 89030, 89031, 89032, 89033, 89036, 89081, 89084, 89085, 89086, 89087.

**Table 7: Birth Sex and COVID19 in North Las Vegas**

Case Status	Birth Sex Categories	N	%	Population	Rate per 100,000
Cases	Female	28582	53.3	118823	24054
	Male	24735	46.1	114980	21512
	Unknown	304	0.6	.	.
Hospitalizations	Female	1225	47.1	118823	1030.9
	Male	1371	52.7	114980	1192.4
	Unknown	5	0.2	.	.
Deaths	Female	293	40.8	118823	246.59
	Male	423	58.8	114980	367.89
	Unknown	3	0.4	.	.

Note1: Population data source for calculating rate estimates: U.S. Census Bureau, ACS 5-year estimate.

Note2: Rates for categories with fewer than 12 cases are suppressed due to high relative standard error.

Note3: Hospitalizations are regardless of deceased status; Deaths are regardless of hospitalization status

**Investigations are ongoing; data are subject to change.  
Reporting through 26JAN2022**

**North Las Vegas zip codes include 89030, 89031, 89032, 89033, 89036, 89081, 89084, 89085, 89086, 89087.**