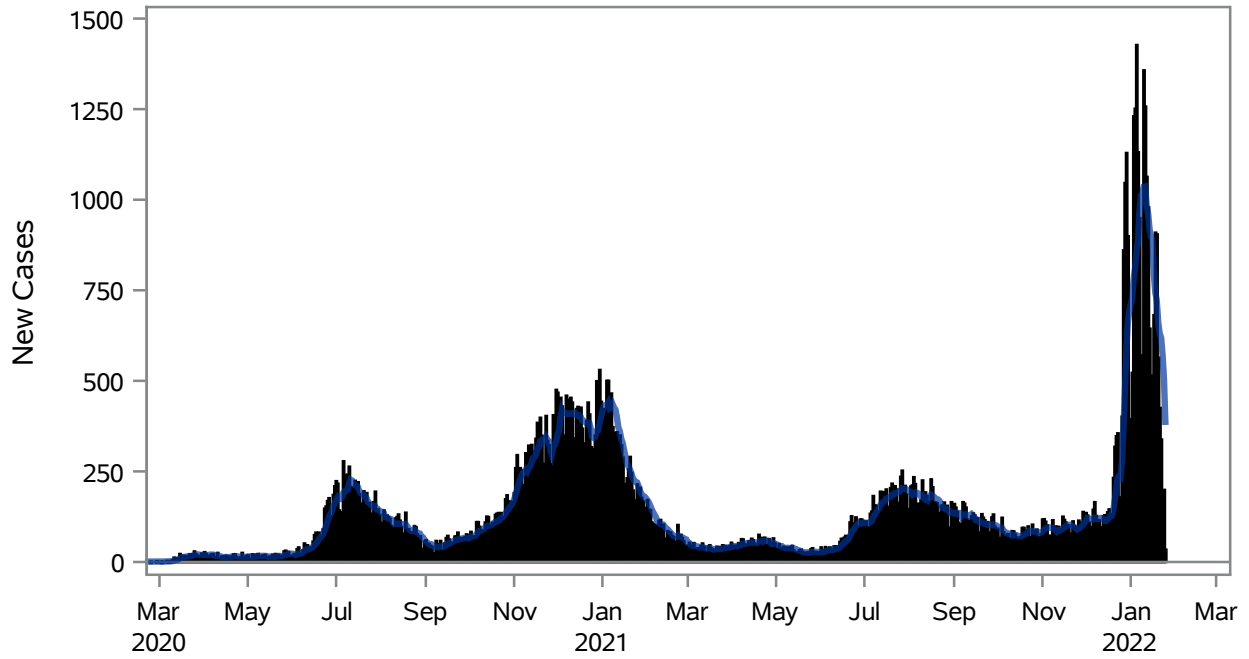


COVID19 Cases for Henderson, 7-Day Moving Average



■ New Cases — 7-Day Moving Average

Investigations are ongoing; data are subject to change.

Reporting through 26JAN2022

Henderson zip codes include 89002, 89011, 89012, 89014, 89015, 89044, 89052, 89074, 89119, 89120, 89122, 89123, 89124, 89183.

Table 1: New COVID19 Cases and 7-Day Moving Average in Henderson, Previous Two Weeks

Date (Daily)	New Cases	7-Day Moving Average
13JAN2022	979	962.86
14JAN2022	644	919.29
15JAN2022	417	897.43
16JAN2022	514	890.14
17JAN2022	681	793.57
18JAN2022	909	743.86
19JAN2022	904	721.14
20JAN2022	564	661.86
21JAN2022	425	630.57
22JAN2022	338	619.29
23JAN2022	183	572.00
24JAN2022	199	503.14

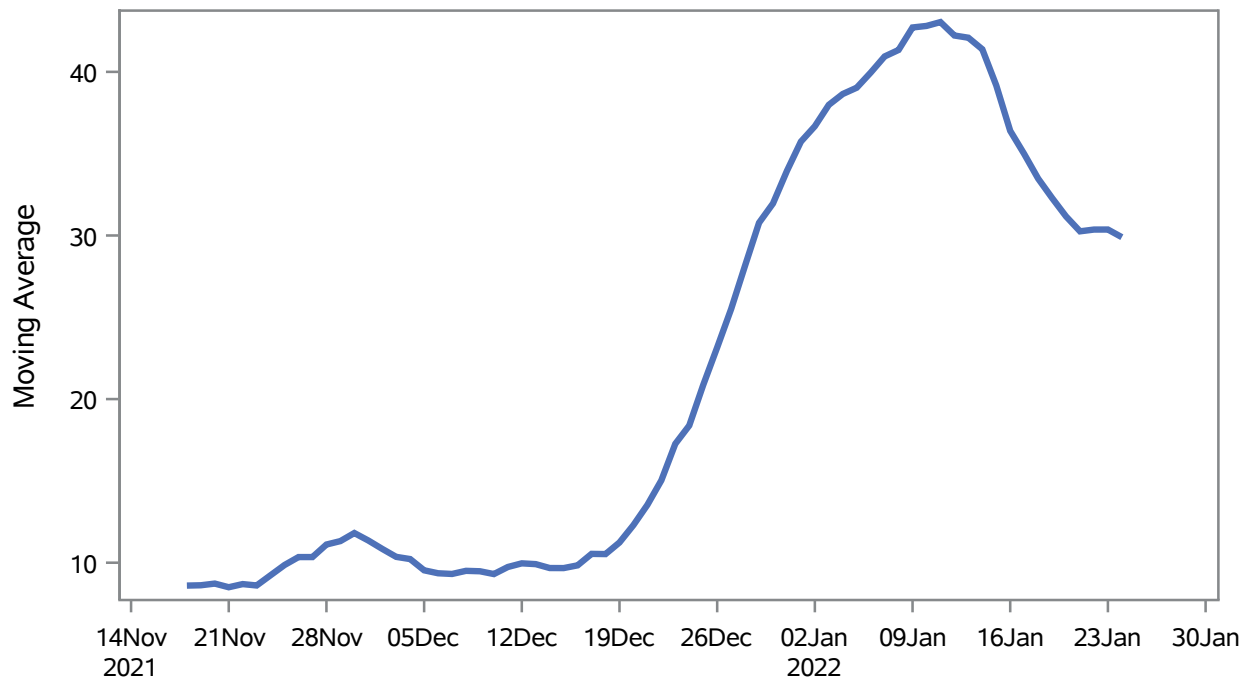
Note1: Event Date is calculated as follows based on completed information:
1) Disease onset date 2) Disease diagnosis date 3) Lab result collection date 4) Report date to SNHD.

Investigations are ongoing; data are subject to change.

Reporting through 26JAN2022

Henderson zip codes include 89002, 89011, 89012, 89014, 89015, 89044, 89052, 89074, 89119, 89120, 89122, 89123, 89124, 89183.

Percent of People Receiving COVID-19 Viral Tests Who Have Positive Results in Henderson



Investigations are ongoing; data are subject to change.

Reporting through 26JAN2022

Henderson zip codes include 89002, 89011, 89012, 89014, 89015, 89044, 89052, 89074, 89119, 89120, 89122, 89123, 89124, 89183.

Table 2: Percent of People Receiving COVID-19 Viral Tests Who Have Positive Results in Henderson

Collection Date	Positive	Negative	Equivocal	Total	% Positivity	7-Day Moving Average
10JAN2022	1172	1642	2	2839	41.28	42.8
11JAN2022	1174	1610	3	2819	41.65	43.0
12JAN2022	948	1781	3	2763	34.31	42.2
13JAN2022	872	1339	2	2240	38.93	42.1
14JAN2022	574	943	2	1539	37.30	41.4
15JAN2022	368	838	3	1209	30.44	39.2
16JAN2022	453	1001	1	1468	30.86	36.4
17JAN2022	665	1434	1	2118	31.40	35.0
18JAN2022	857	1868	3	2755	31.11	33.5
19JAN2022	972	2700	6	3738	26.00	32.3
20JAN2022	632	1347	5	2036	31.04	31.2
21JAN2022	394	872	8	1274	30.93	30.3
22JAN2022	395	870	1	1266	31.20	30.4
23JAN2022	291	649	3	943	30.86	30.4
24JAN2022	562	1362	7	1998	28.13	29.9

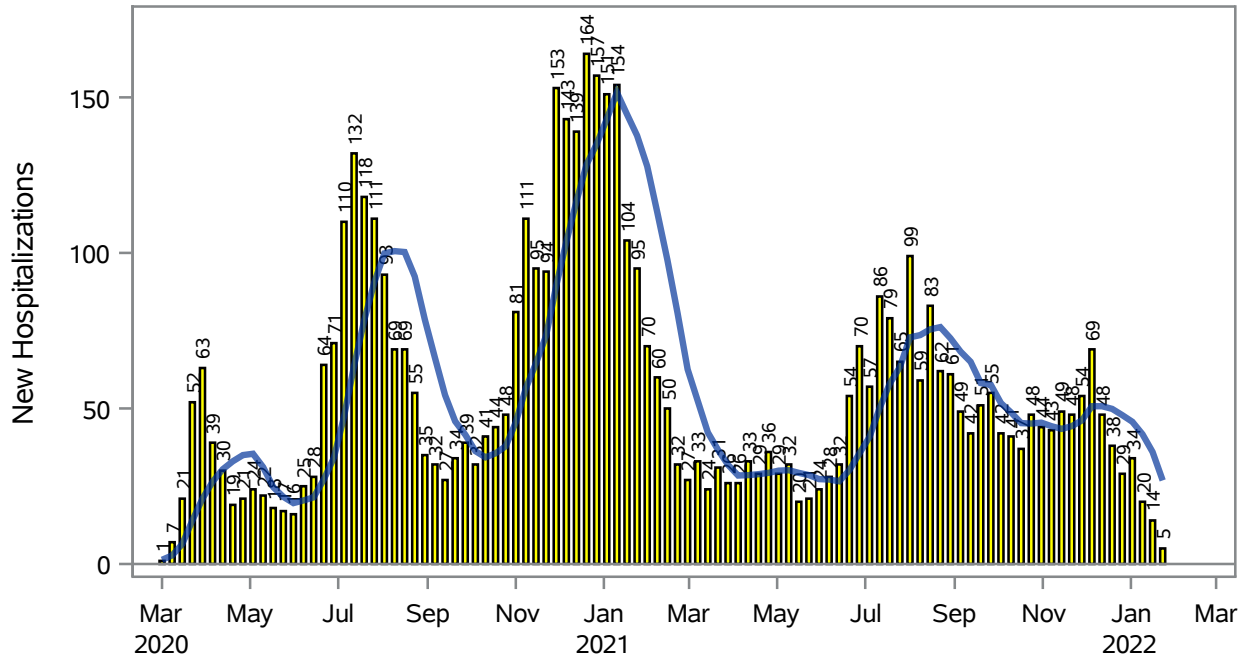
Note: Testing Data includes a 3 day delay

Investigations are ongoing; data are subject to change.

Reporting through 26JAN2022

Henderson zip codes include 89002, 89011, 89012, 89014, 89015, 89044, 89052, 89074, 89119, 89120, 89122, 89123, 89124, 89183.

COVID19 Hospitalizations for Henderson, 7-Day Moving Average



■ New Hospitalizations
 — 7-Day Moving Average

Investigations are ongoing; data are subject to change.

Reporting through 26JAN2022

Henderson zip codes include 89002, 89011, 89012, 89014, 89015, 89044, 89052, 89074, 89119, 89120, 89122, 89123, 89124, 89183.

Table 3: New COVID19-Related Hospitalizations and 7-Day Moving Average in Henderson, previous month

Week	Hospitalizations	7-Day Moving Average
02JAN2022	34	45.7
09JAN2022	20	41.7
16JAN2022	14	36.0
23JAN2022	5	26.9

Note1: Admission Date is calculated as follows based on completed information:
A) COVID19 Case is hospitalized B) COVID19 Case has a hospital admission date.

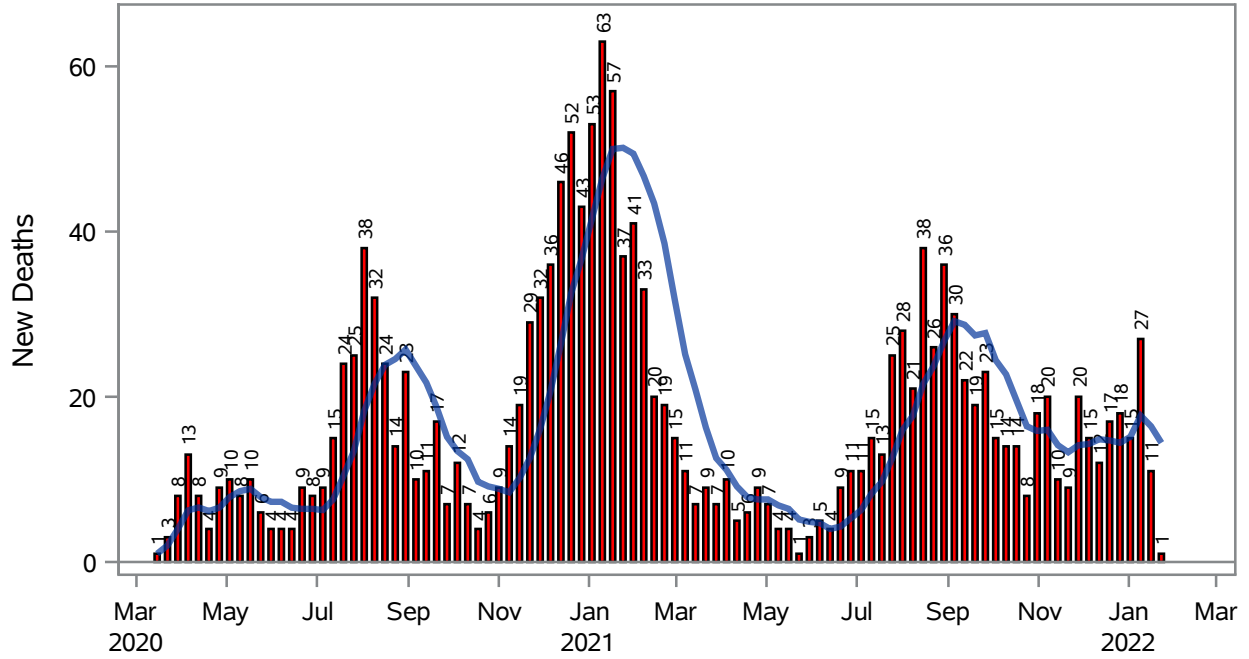
If admission date is missing, then the following is substituted temporarily, in order:
1) Disease onset date 2) Disease diagnosis date 3) Lab result collection date 4) Report date to SNHD.

Investigations are ongoing; data are subject to change.

Reporting through 26JAN2022

Henderson zip codes include 89002, 89011, 89012, 89014, 89015, 89044, 89052, 89074, 89119, 89120, 89122, 89123, 89124, 89183.

COVID19 Deaths for Henderson, 7-Day Moving Average



■ New Deaths — 7-Day Moving Average

Investigations are ongoing; data are subject to change.

Reporting through 26JAN2022

Henderson zip codes include 89002, 89011, 89012, 89014, 89015, 89044, 89052, 89074, 89119, 89120, 89122, 89123, 89124, 89183.

Table 4: New COVID19-Related Deaths and 7-Day Moving Average in Henderson, Previous Month

Week	Deaths	7-Day Moving Average
02JAN2022	15	15.1
09JAN2022	27	17.7
16JAN2022	11	16.4
23JAN2022	1	14.4

Note1: Date of Death is calculated as follows based on completed information:
A) COVID19 Case is reported as deceased B) COVID19 Case has a reported date of death.

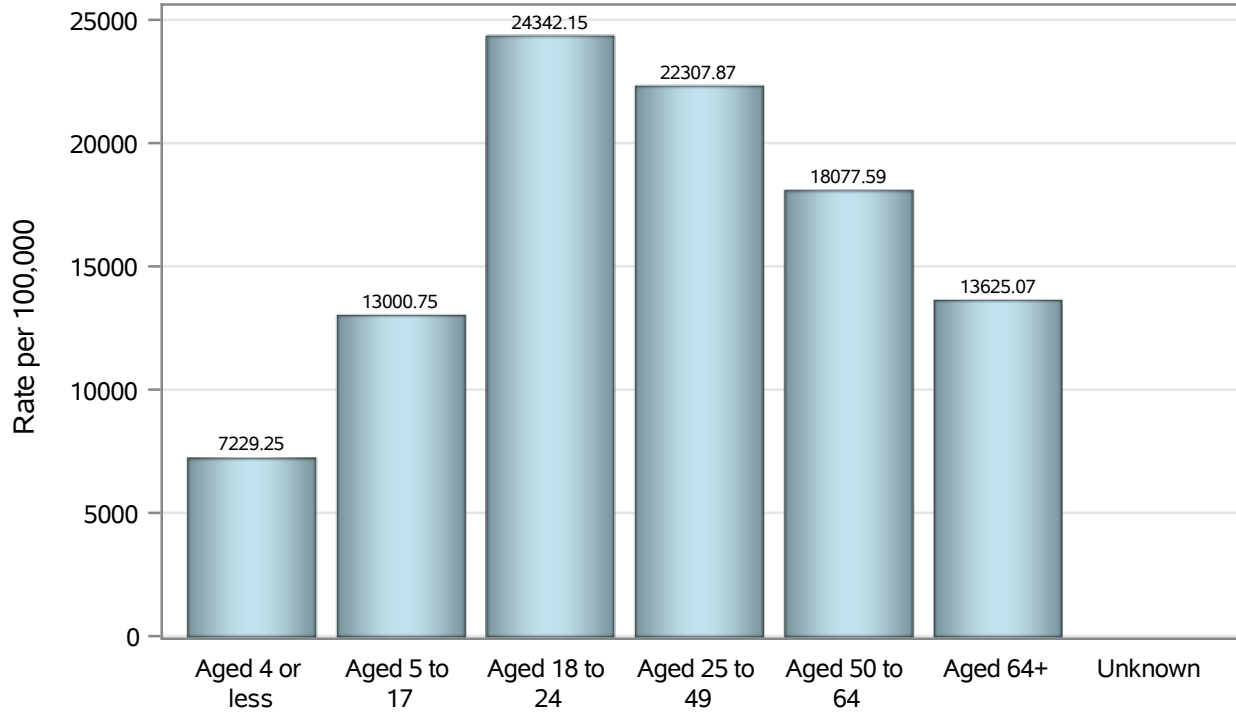
If date of death is missing, then the following is substituted temporarily, in order:
1) Disease onset date 2) Disease diagnosis date
3) Lab result collection date 4) Report date to SNHD.

Investigations are ongoing; data are subject to change.

Reporting through 26JAN2022

Henderson zip codes include 89002, 89011, 89012, 89014, 89015, 89044, 89052, 89074, 89119, 89120, 89122, 89123, 89124, 89183.

Case Age Rates in Henderson

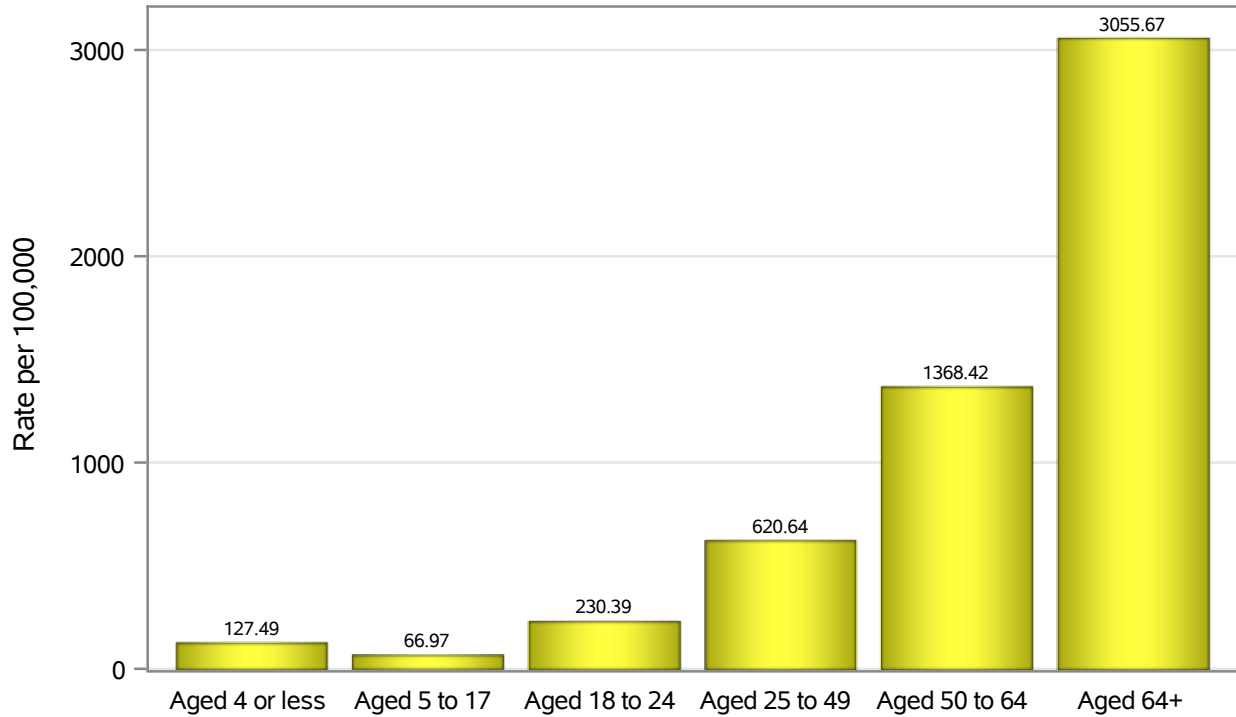


Investigations are ongoing; data are subject to change.

Reporting through 26JAN2022

Henderson zip codes include 89002, 89011, 89012, 89014, 89015, 89044, 89052, 89074, 89119, 89120, 89122, 89123, 89124, 89183.

Hospitalization Age Rates in Henderson

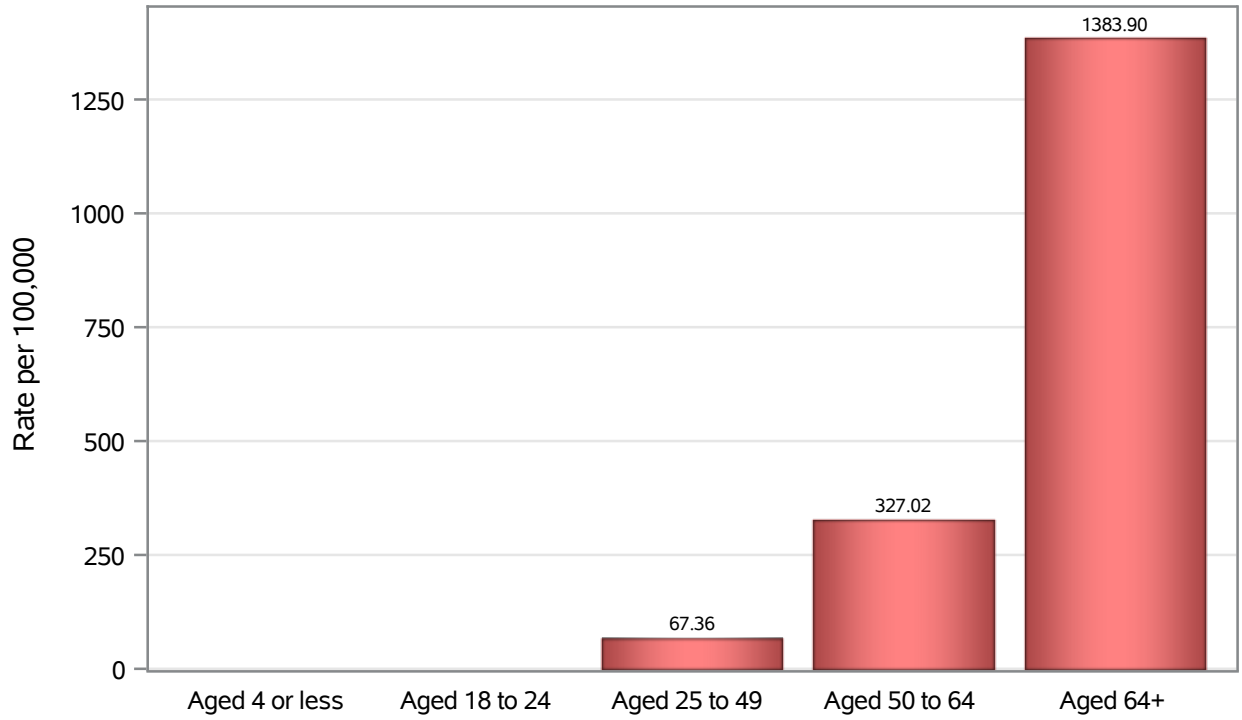


Investigations are ongoing; data are subject to change.

Reporting through 26JAN2022

Henderson zip codes include 89002, 89011, 89012, 89014, 89015, 89044, 89052, 89074, 89119, 89120, 89122, 89123, 89124, 89183.

Death Age Rates in Henderson



Investigations are ongoing; data are subject to change.

Reporting through 26JAN2022

Henderson zip codes include 89002, 89011, 89012, 89014, 89015, 89044, 89052, 89074, 89119, 89120, 89122, 89123, 89124, 89183.

Table 5: Age and COVID19 in Henderson

Case Status	Age Categories	N	%	Population	Rate per 100,000
Cases	Aged 4 or less	2098	2.2	29,021	7229.2
	Aged 5 to 17	10677	11.2	82,126	13001
	Aged 18 to 24	10777	11.3	44,273	24342
	Aged 25 to 49	41730	43.6	187064	22308
	Aged 50 to 64	18574	19.4	102746	18078
	Aged 64+	11785	12.3	86,495	13625
	Unknown	18	0.0	.	.
Hospitalizations	Aged 4 or less	37	0.7	29,021	127.49
	Aged 5 to 17	55	1.0	82,126	66.97
	Aged 18 to 24	102	1.9	44,273	230.39
	Aged 25 to 49	1161	21.5	187064	620.64
	Aged 50 to 64	1406	26.0	102746	1368.4
	Aged 64+	2643	48.9	86,495	3055.7
Deaths	Aged 4 or less	1	0.1	29,021	.
	Aged 18 to 24	1	0.1	44,273	.
	Aged 25 to 49	126	7.6	187064	67.36
	Aged 50 to 64	336	20.2	102746	327.02
	Aged 64+	1197	72.1	86,495	1383.9

Note1: Population data source for calculating rate estimates: U.S. Census Bureau, ACS 5-year estimate.

Note2: Rates for categories with fewer than 12 cases are suppressed due to high relative standard error.

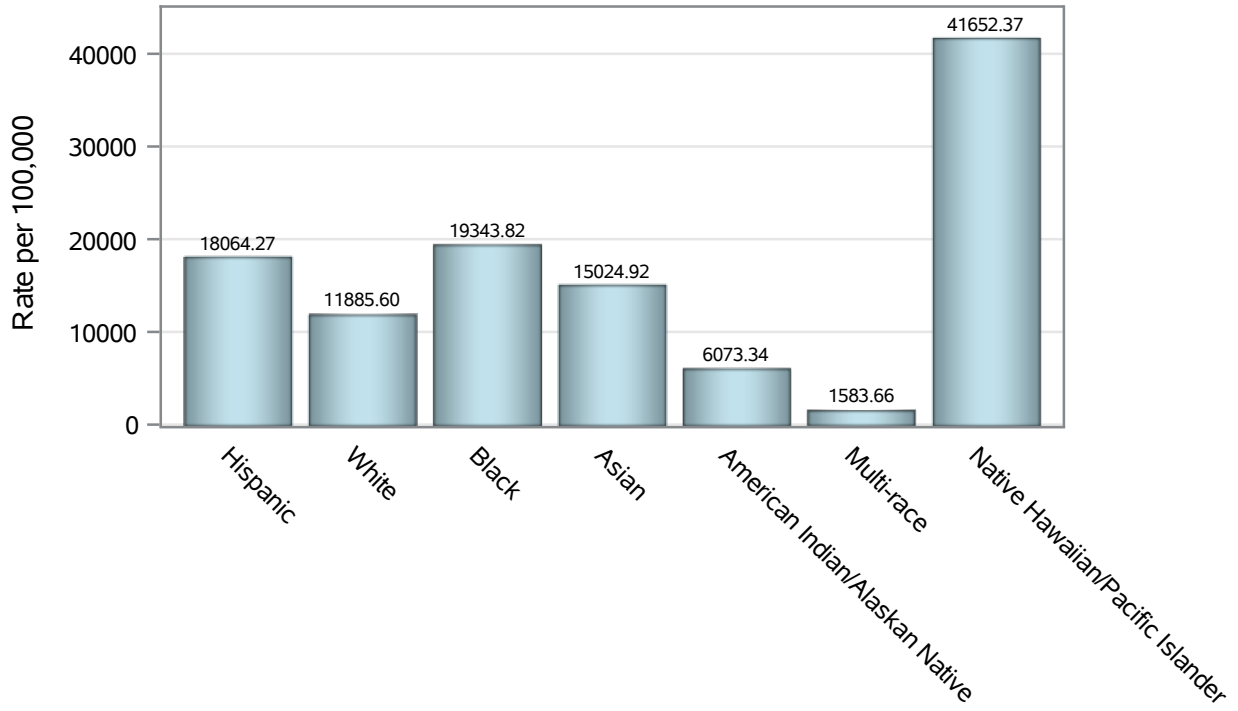
Note3: Hospitalizations are regardless of deceased status; Deaths are regardless of hospitalization status

Investigations are ongoing; data are subject to change.

Reporting through 26JAN2022

Henderson zip codes include 89002, 89011, 89012, 89014, 89015, 89044, 89052, 89074, 89119, 89120, 89122, 89123, 89124, 89183.

Case Race/Ethnicity Rates in Henderson

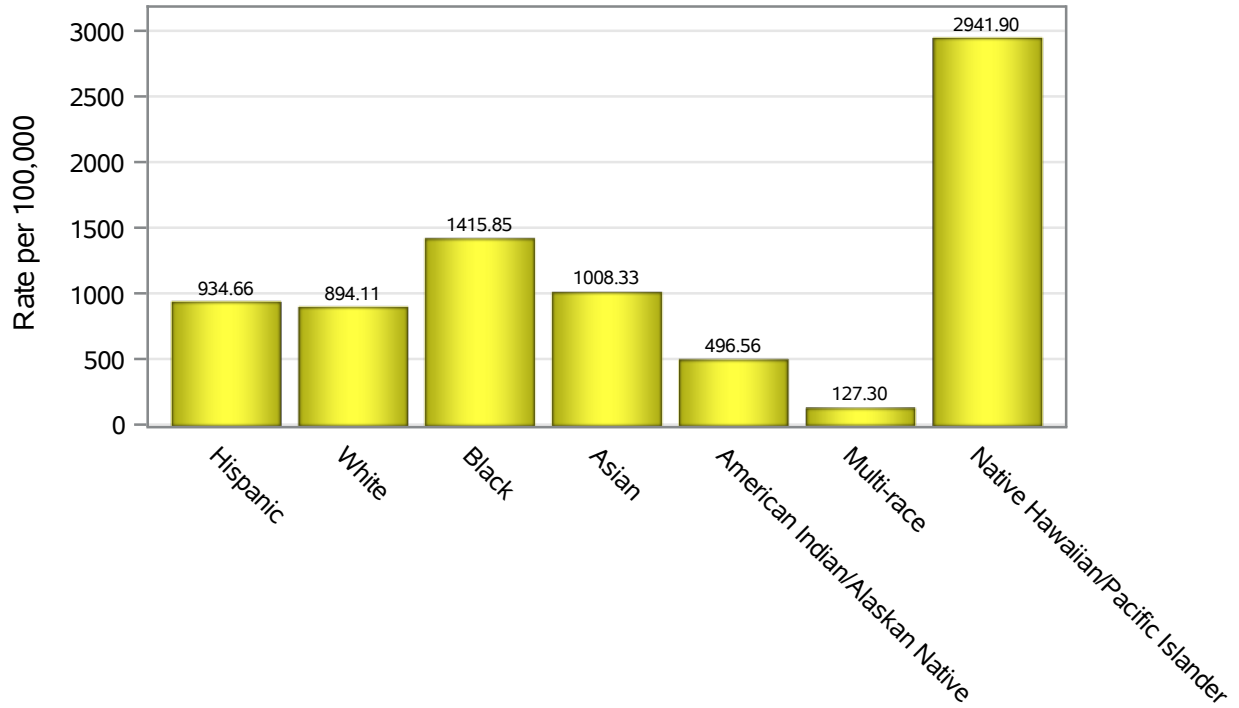


Investigations are ongoing; data are subject to change.

Reporting through 26JAN2022

Henderson zip codes include 89002, 89011, 89012, 89014, 89015, 89044, 89052, 89074, 89119, 89120, 89122, 89123, 89124, 89183.

Hospitalization Race/Ethnicity Rates in Henderson

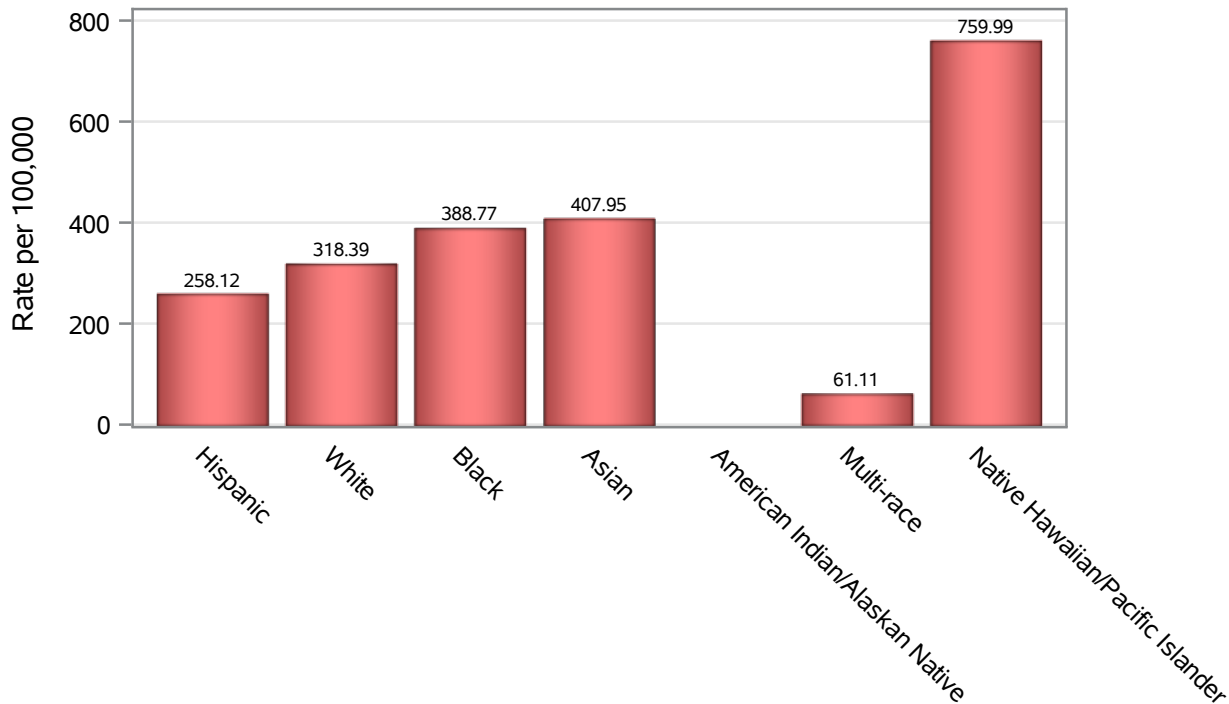


Investigations are ongoing; data are subject to change.

Reporting through 26JAN2022

Henderson zip codes include 89002, 89011, 89012, 89014, 89015, 89044, 89052, 89074, 89119, 89120, 89122, 89123, 89124, 89183.

Death Race/Ethnicity Rates in Henderson



Investigations are ongoing; data are subject to change.

Reporting through 26JAN2022

Henderson zip codes include 89002, 89011, 89012, 89014, 89015, 89044, 89052, 89074, 89119, 89120, 89122, 89123, 89124, 89183.

Table 6: Race/Ethnicity and COVID19 in Henderson

Case Status	Race Ethnicity Categories	N	%	Population	Rate per 100,000
Cases	Hispanic	21975	23.0	121649	18064
	White	34642	36.2	291462	11886
	Black	7364	7.7	38,069	19344
	Asian	7808	8.2	51,967	15025
	American Indian/Alaskan Native	159	0.2	2,618	6073.3
	Multi-race	311	0.3	19,638	1583.7
	Native Hawaiian/Pacific Islander	1699	1.8	4,079	41652
	Unknown	21701	22.7	.	.
Hospitalizations	Hispanic	1137	21.0	121649	934.66
	White	2606	48.2	291462	894.11
	Black	539	10.0	38,069	1415.9
	Asian	524	9.7	51,967	1008.3
	American Indian/Alaskan Native	13	0.2	2,618	496.56
	Multi-race	25	0.5	19,638	127.30
	Native Hawaiian/Pacific Islander	120	2.2	4,079	2941.9
	Unknown	440	8.1	.	.
Deaths	Hispanic	314	18.9	121649	258.12
	White	928	55.9	291462	318.39
	Black	148	8.9	38,069	388.77
	Asian	212	12.8	51,967	407.95
	American Indian/Alaskan Native	6	0.4	2,618	.
	Multi-race	12	0.7	19,638	61.11
	Native Hawaiian/Pacific Islander	31	1.9	4,079	759.99
	Unknown	10	0.6	.	.

Note1: Population data source for calculating rate estimates: U.S. Census Bureau, ACS 5-year estimate.

Note2: Rates for categories with fewer than 12 cases are suppressed due to high relative standard error.

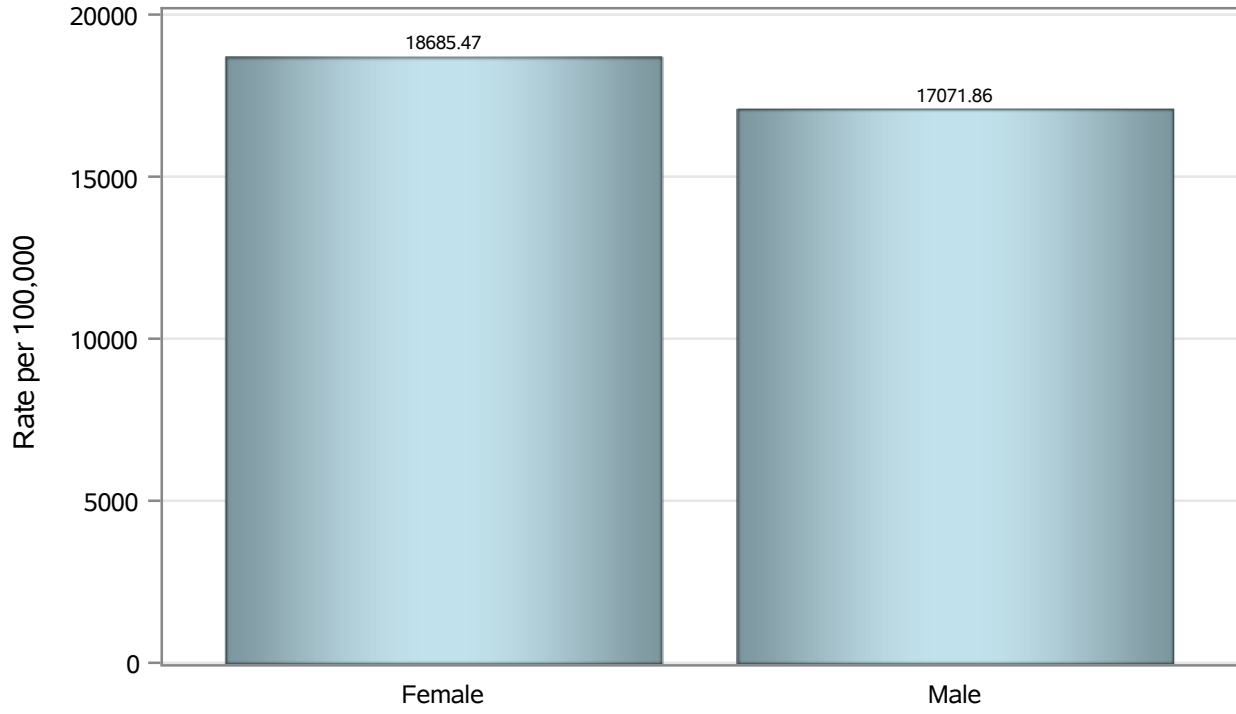
Note3: Hospitalizations are regardless of deceased status; Deaths are regardless of hospitalization status

Investigations are ongoing; data are subject to change.

Reporting through 26JAN2022

Henderson zip codes include 89002, 89011, 89012, 89014, 89015, 89044, 89052, 89074, 89119, 89120, 89122, 89123, 89124, 89183.

Case Birth Sex Rates in Henderson

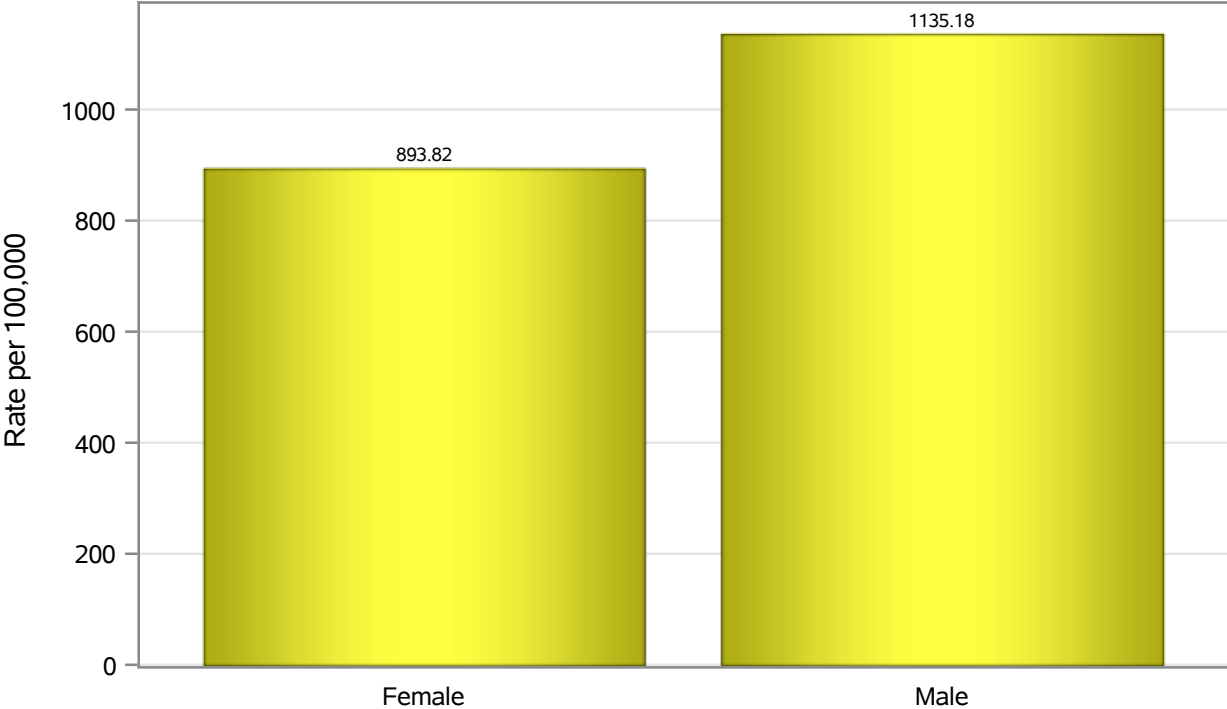


Investigations are ongoing; data are subject to change.

Reporting through 26JAN2022

Henderson zip codes include 89002, 89011, 89012, 89014, 89015, 89044, 89052, 89074, 89119, 89120, 89122, 89123, 89124, 89183.

Hospitalization Birth Sex Rates in Henderson

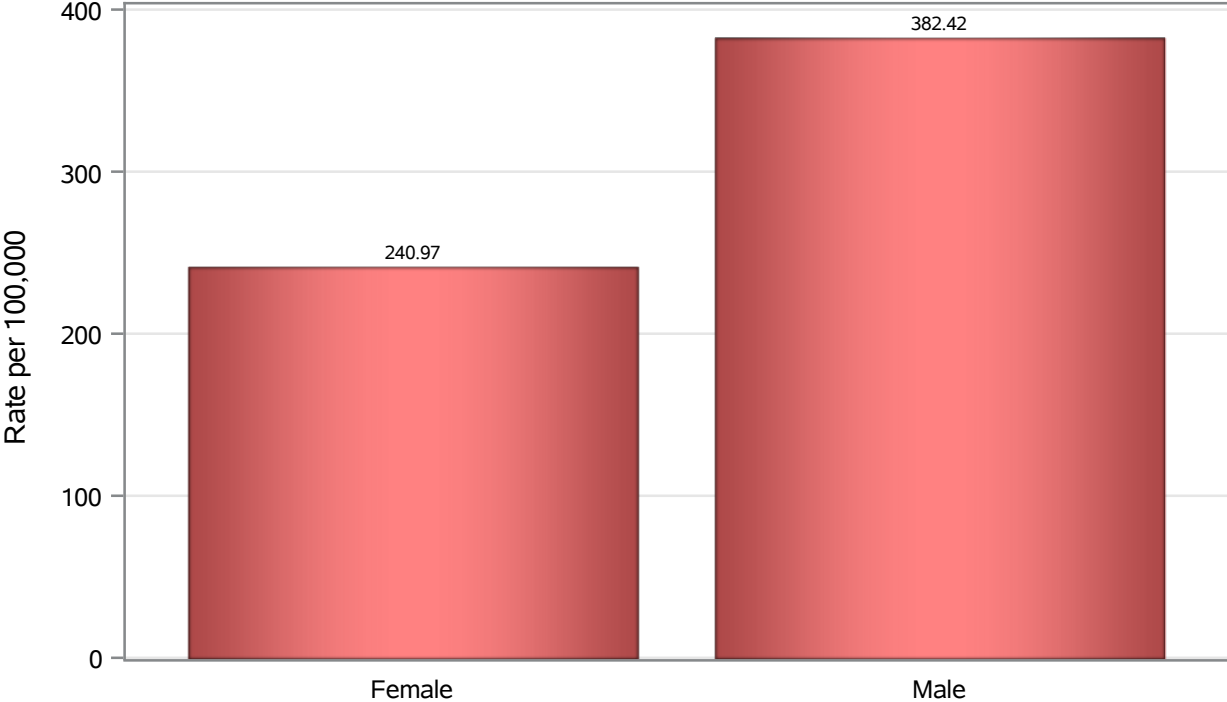


Investigations are ongoing; data are subject to change.

Reporting through 26JAN2022

Henderson zip codes include 89002, 89011, 89012, 89014, 89015, 89044, 89052, 89074, 89119, 89120, 89122, 89123, 89124, 89183.

Death Birth Sex Rates in Henderson



Investigations are ongoing; data are subject to change.
Reporting through 26JAN2022

Henderson zip codes include 89002, 89011, 89012, 89014, 89015, 89044, 89052, 89074, 89119, 89120, 89122, 89123, 89124, 89183.

Table 7: Birth Sex and COVID19 in Henderson

Case Status	Birth Sex Categories	N	%	Population	Rate per 100,000
Cases	Female	49859	52.1	266833	18685
	Male	45222	47.3	264892	17072
	Unknown	578	0.6	.	.
Hospitalizations	Female	2385	44.1	266833	893.82
	Male	3007	55.6	264892	1135.2
	Unknown	12	0.2	.	.
Deaths	Female	643	38.7	266833	240.97
	Male	1013	61.0	264892	382.42
	Unknown	5	0.3	.	.

Note1: Population data source for calculating rate estimates: U.S. Census Bureau, ACS 5-year estimate.

Note2: Rates for categories with fewer than 12 cases are suppressed due to high relative standard error.

Note3: Hospitalizations are regardless of deceased status; Deaths are regardless of hospitalization status

Investigations are ongoing; data are subject to change.

Reporting through 26JAN2022

Henderson zip codes include 89002, 89011, 89012, 89014, 89015, 89044, 89052, 89074, 89119, 89120, 89122, 89123, 89124, 89183.