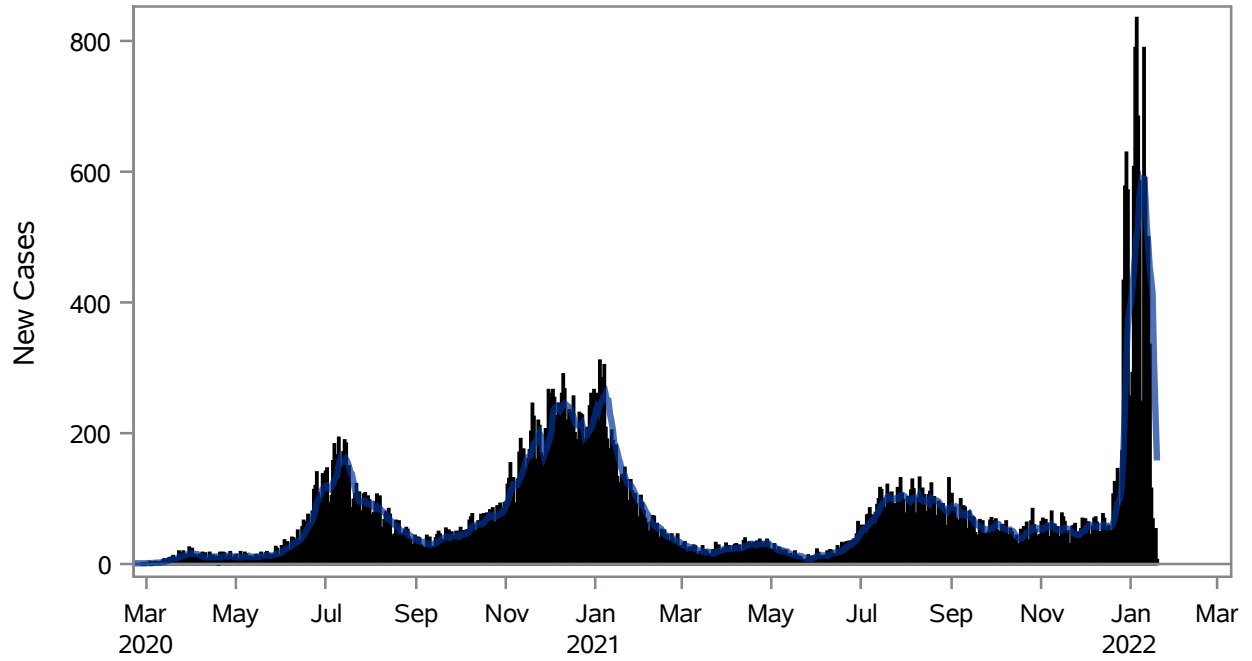


COVID19 Cases for North Las Vegas, 7-Day Moving Average



■ New Cases — 7-Day Moving Average

Investigations are ongoing; data are subject to change.

Reporting through 19JAN2022

North Las Vegas zip codes include 89030, 89031, 89032, 89033, 89036, 89081, 89084, 89085, 89086, 89087.

Table 1: New COVID19 Cases and 7-Day Moving Average in North Las Vegas, Previous Two Weeks

Date (Daily)	New Cases	7-Day Moving Average
06JAN2022	684	516.00
07JAN2022	585	563.00
08JAN2022	248	577.14
09JAN2022	225	567.57
10JAN2022	789	593.57
11JAN2022	590	565.14
12JAN2022	500	517.29
13JAN2022	499	490.86
14JAN2022	335	455.14
15JAN2022	115	436.14
16JAN2022	68	413.71
17JAN2022	32	305.57

Note1: Event Date is calculated as follows based on completed information:

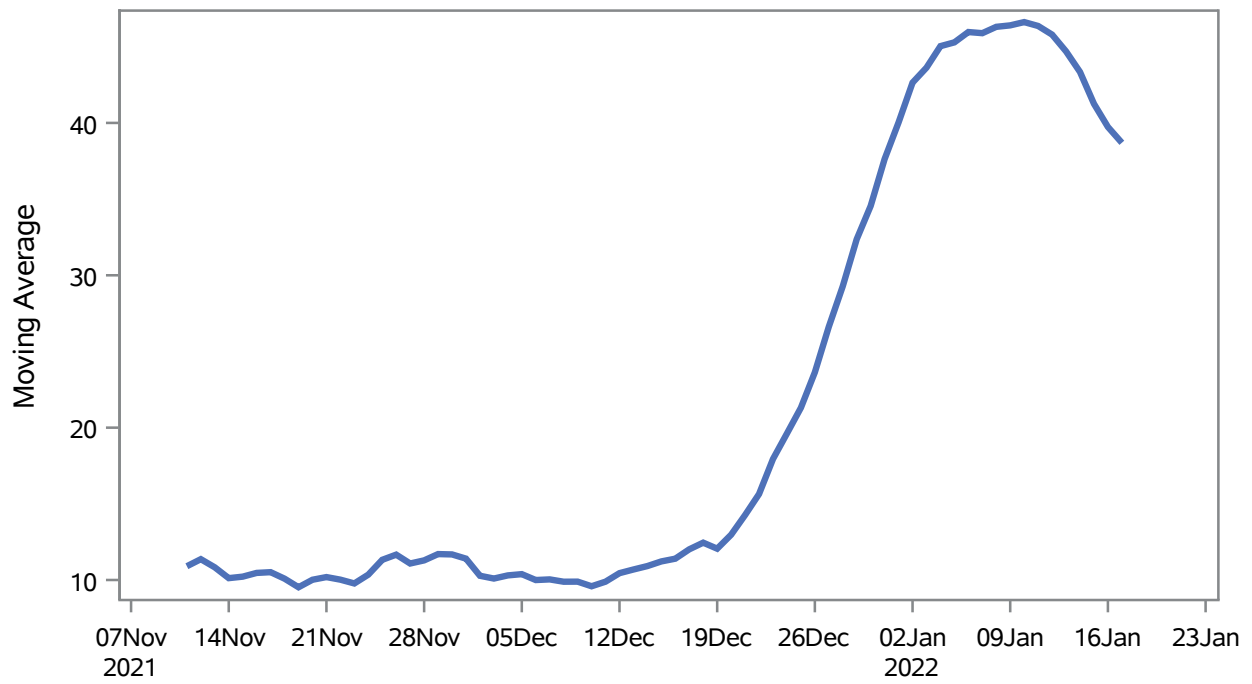
1) Disease onset date 2) Disease diagnosis date 3) Lab result collection date 4) Report date to SNHD.

Investigations are ongoing; data are subject to change.

Reporting through 19JAN2022

North Las Vegas zip codes include 89030, 89031, 89032, 89033, 89036, 89081, 89084, 89085, 89086, 89087.

Percent of People Receiving COVID-19 Viral Tests Who Have Positive Results in North Las Vegas



Investigations are ongoing; data are subject to change.

Reporting through 19JAN2022

North Las Vegas zip codes include 89030, 89031, 89032, 89033, 89036, 89081, 89084, 89085, 89086, 89087.

Table 2: Percent of People Receiving COVID-19 Viral Tests Who Have Positive Results in North Las Vegas

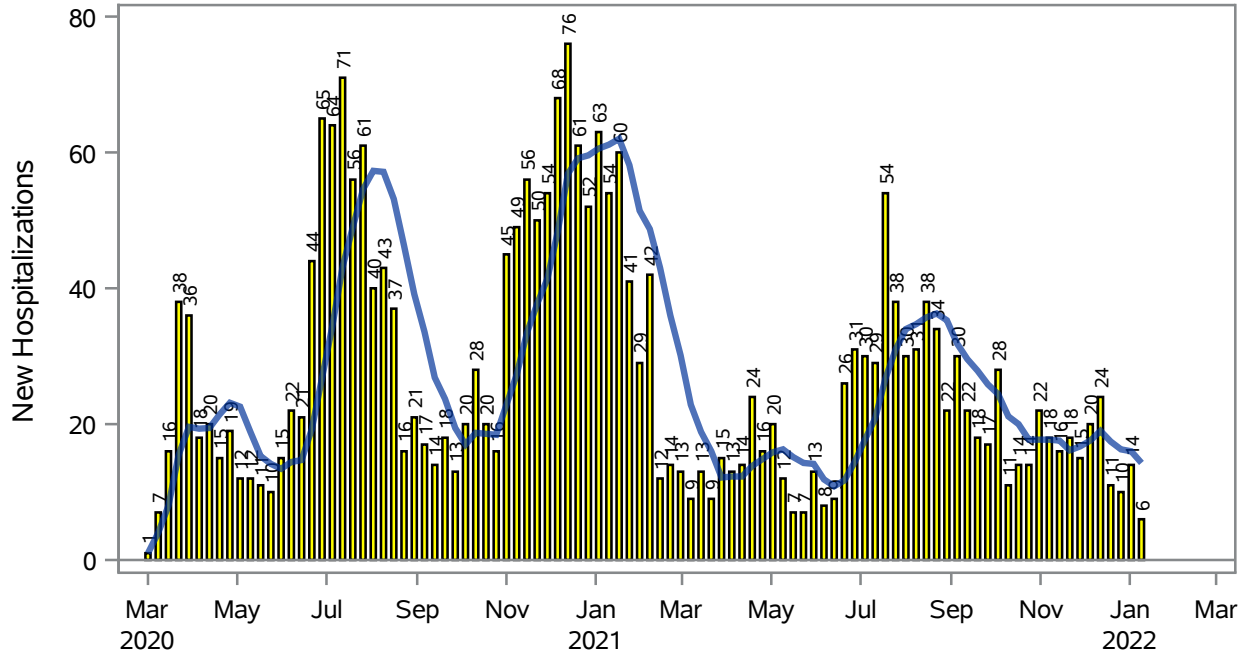
Collection Date	Positive	Negative	Equivocal	Total	% Positivity	7-Day Moving Average
03JAN2022	1011	1224	2	2264	44.66	43.6
04JAN2022	1225	1348	1	2602	47.08	45.0
05JAN2022	1293	1668	2	2999	43.11	45.3
06JAN2022	1072	1245	1	2347	45.68	46.0
07JAN2022	891	988	2	1911	46.62	45.9
08JAN2022	369	407	1	786	46.95	46.3
09JAN2022	380	364	5	749	50.73	46.4
10JAN2022	1272	1449	3	2756	46.15	46.6
11JAN2022	1078	1262	4	2380	45.29	46.4
12JAN2022	927	1407	3	2368	39.15	45.8
13JAN2022	949	1516	3	2499	37.98	44.7
14JAN2022	680	1126	2	1830	37.16	43.3
15JAN2022	301	629	1	931	32.33	41.3
16JAN2022	170	253	1	424	40.09	39.7
17JAN2022	243	381	1	625	38.88	38.7

Note: Testing Data includes a 3 day delay

**Investigations are ongoing; data are subject to change.
Reporting through 19JAN2022**

North Las Vegas zip codes include 89030, 89031, 89032, 89033, 89036, 89081, 89084, 89085, 89086, 89087.

COVID19 Hospitalizations for North Las Vegas, 7-Day Moving Average



■ New Hospitalizations
 — 7-Day Moving Average

Investigations are ongoing; data are subject to change.

Reporting through 19JAN2022

North Las Vegas zip codes include 89030, 89031, 89032, 89033, 89036, 89081, 89084, 89085, 89086, 89087.

Table 3: New COVID19-Related Hospitalizations and 7-Day Moving Average in North Las Vegas, previous month

Week	Hospitalizations	7-Day Moving Average
26DEC2021	10	16.3
02JAN2022	14	16.0
09JAN2022	6	14.3

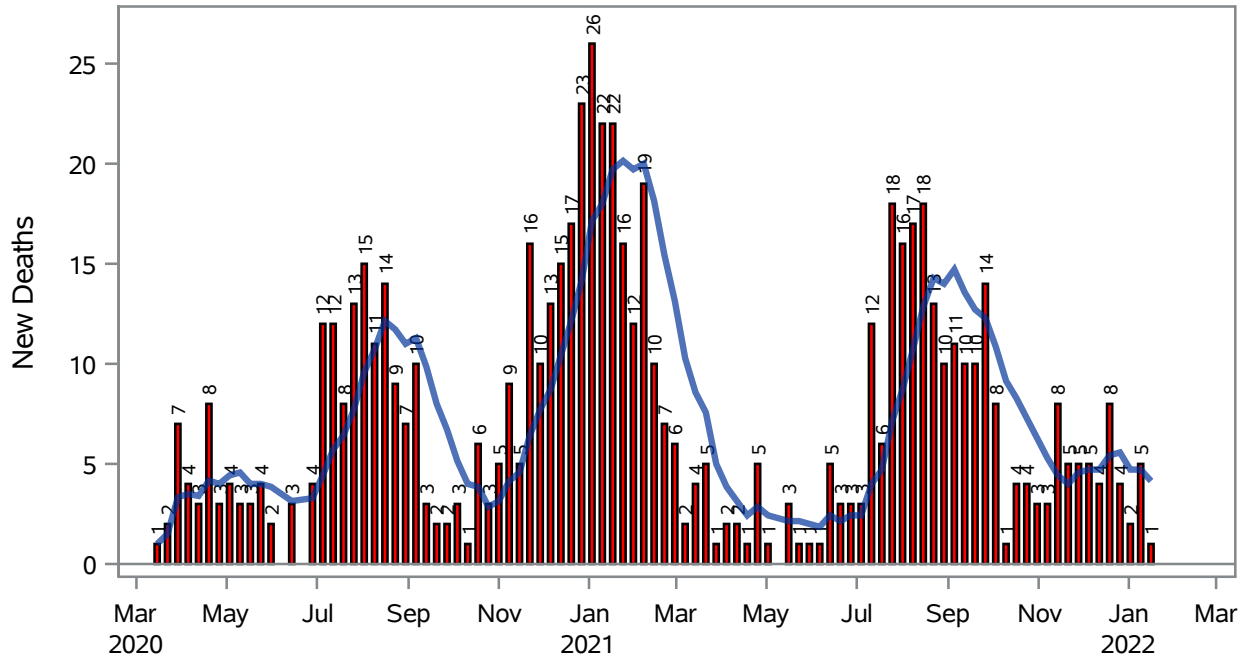
Note1: Admission Date is calculated as follows based on completed information:
A) COVID19 Case is hospitalized B) COVID19 Case has a hospital admission date.

If admission date is missing, then the following is substituted temporarily, in order:
1) Disease onset date 2) Disease diagnosis date 3) Lab result collection date 4) Report date to SNHD.

**Investigations are ongoing; data are subject to change.
Reporting through 19JAN2022**

North Las Vegas zip codes include 89030, 89031, 89032, 89033, 89036, 89081, 89084, 89085, 89086, 89087.

COVID19 Deaths for North Las Vegas, 7-Day Moving Average



■ New Deaths — 7-Day Moving Average

Investigations are ongoing; data are subject to change.

Reporting through 19JAN2022

North Las Vegas zip codes include 89030, 89031, 89032, 89033, 89036, 89081, 89084, 89085, 89086, 89087.

Table 4: New COVID19-Related Deaths and 7-Day Moving Average in North Las Vegas, Previous Month

Week	Deaths	7-Day Moving Average
26DEC2021	4	5.57
02JAN2022	2	4.71
09JAN2022	5	4.71
16JAN2022	1	4.14

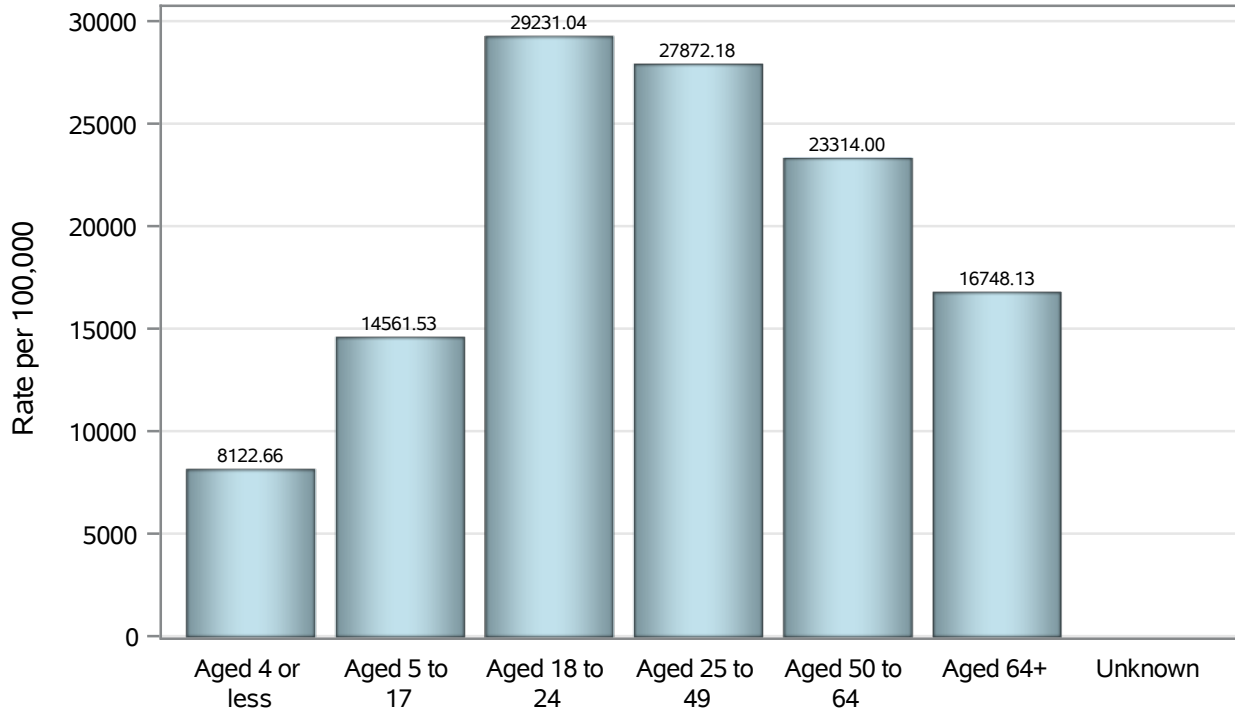
Note1: Date of Death is calculated as follows based on completed information:
A) COVID19 Case is reported as deceased B) COVID19 Case has a reported date of death.

If date of death is missing, then the following is substituted temporarily, in order:
1) Disease onset date 2) Disease diagnosis date
3) Lab result collection date 4) Report date to SNHD.

**Investigations are ongoing; data are subject to change.
Reporting through 19JAN2022**

North Las Vegas zip codes include 89030, 89031, 89032, 89033, 89036, 89081, 89084, 89085, 89086, 89087.

Case Age Rates in North Las Vegas

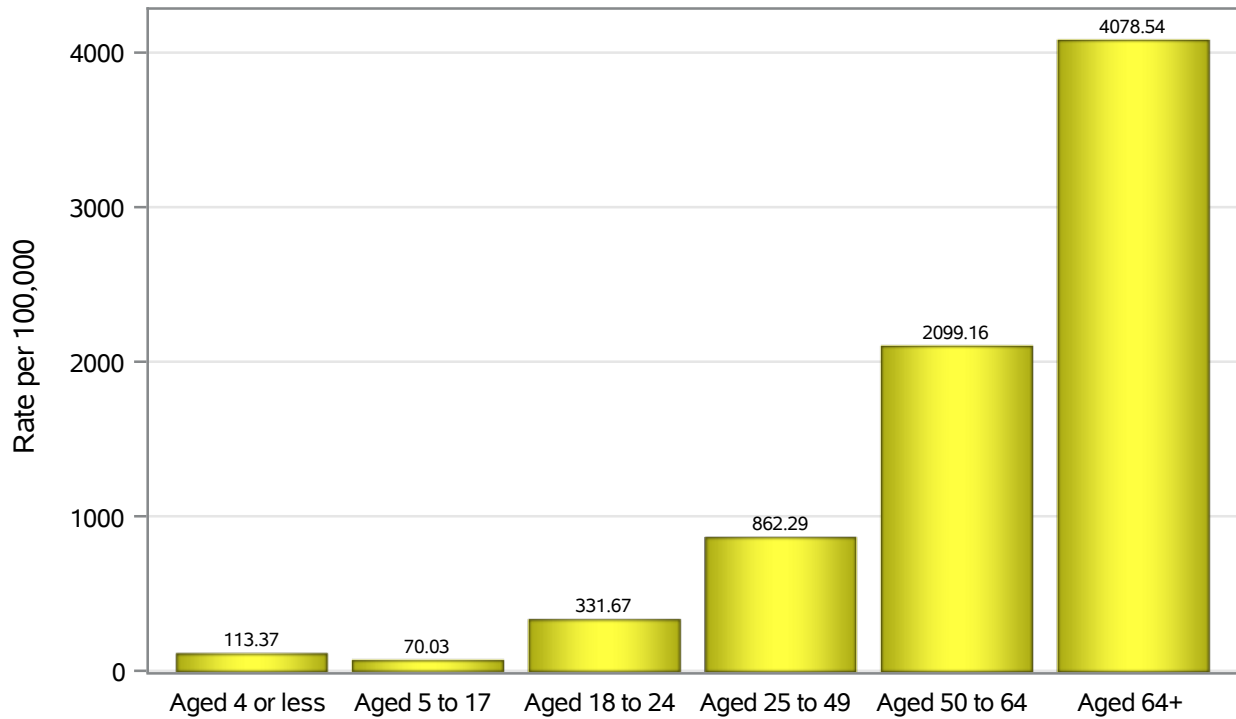


Investigations are ongoing; data are subject to change.

Reporting through 19JAN2022

North Las Vegas zip codes include 89030, 89031, 89032, 89033, 89036, 89081, 89084, 89085, 89086, 89087.

Hospitalization Age Rates in North Las Vegas

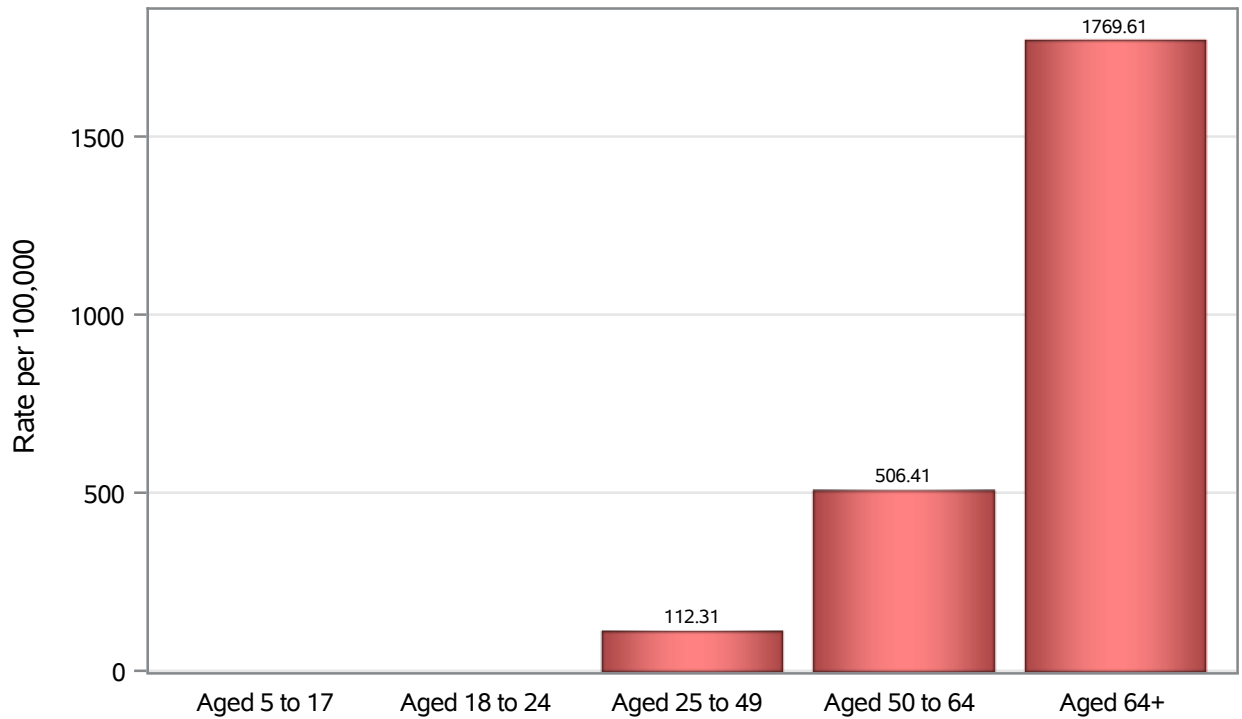


Investigations are ongoing; data are subject to change.

Reporting through 19JAN2022

North Las Vegas zip codes include 89030, 89031, 89032, 89033, 89036, 89081, 89084, 89085, 89086, 89087.

Death Age Rates in North Las Vegas



Investigations are ongoing; data are subject to change.

Reporting through 19JAN2022

North Las Vegas zip codes include 89030, 89031, 89032, 89033, 89036, 89081, 89084, 89085, 89086, 89087.

Table 5: Age and COVID19 in North Las Vegas

Case Status	Age Categories	N	%	Population	Rate per 100,000
Cases	Aged 4 or less	1433	2.8	17,642	8122.7
	Aged 5 to 17	7278	14.3	49,981	14562
	Aged 18 to 24	6698	13.1	22,914	29231
	Aged 25 to 49	23079	45.2	82,803	27872
	Aged 50 to 64	8563	16.8	36,729	23314
	Aged 64+	3975	7.8	23,734	16748
	Unknown	6	0.0	.	.
Hospitalizations	Aged 4 or less	20	0.8	17,642	113.37
	Aged 5 to 17	35	1.4	49,981	70.03
	Aged 18 to 24	76	2.9	22,914	331.67
	Aged 25 to 49	714	27.6	82,803	862.29
	Aged 50 to 64	771	29.8	36,729	2099.2
	Aged 64+	968	37.5	23,734	4078.5
	Deaths	Aged 5 to 17	1	0.1	49,981
Aged 18 to 24		1	0.1	22,914	.
Aged 25 to 49		93	13.3	82,803	112.31
Aged 50 to 64		186	26.5	36,729	506.41
Aged 64+		420	59.9	23,734	1769.6

Note1: Population data source for calculating rate estimates: U.S. Census Bureau, ACS 5-year estimate.

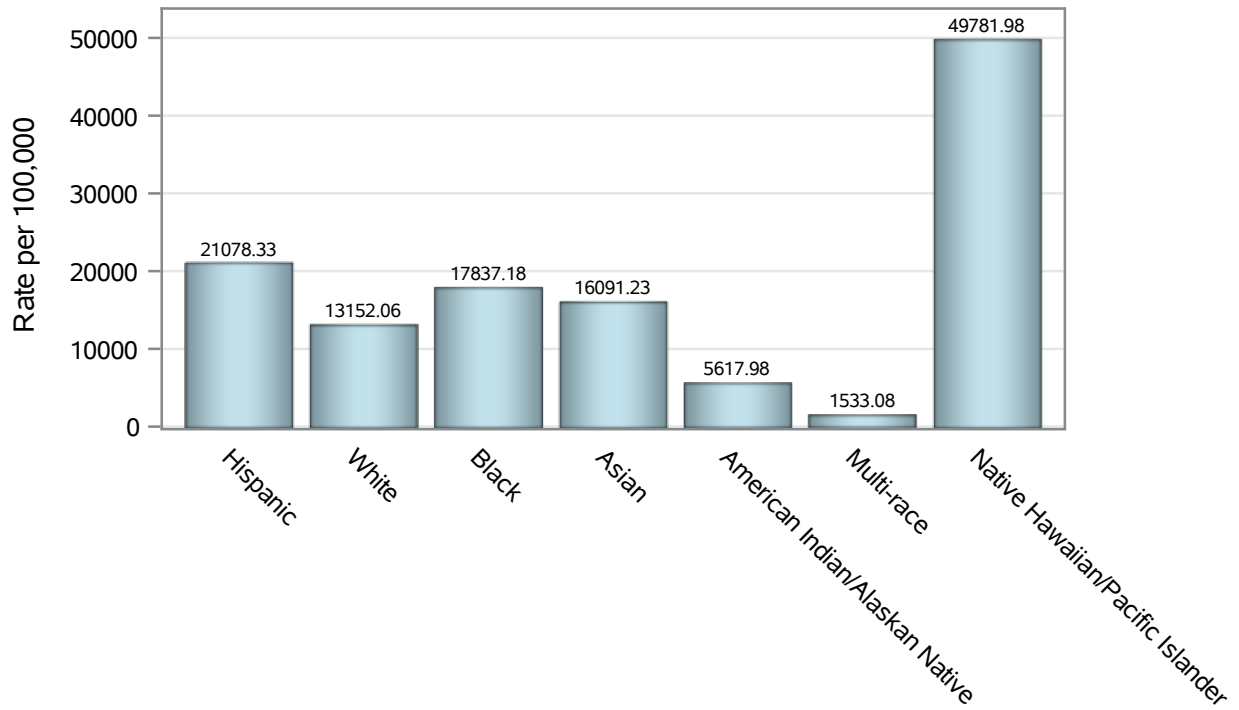
Note2: Rates for categories with fewer than 12 cases are suppressed due to high relative standard error.

Note3: Hospitalizations are regardless of deceased status; Deaths are regardless of hospitalization status

**Investigations are ongoing; data are subject to change.
Reporting through 19JAN2022**

North Las Vegas zip codes include 89030, 89031, 89032, 89033, 89036, 89081, 89084, 89085, 89086, 89087.

Case Race/Ethnicity Rates in North Las Vegas

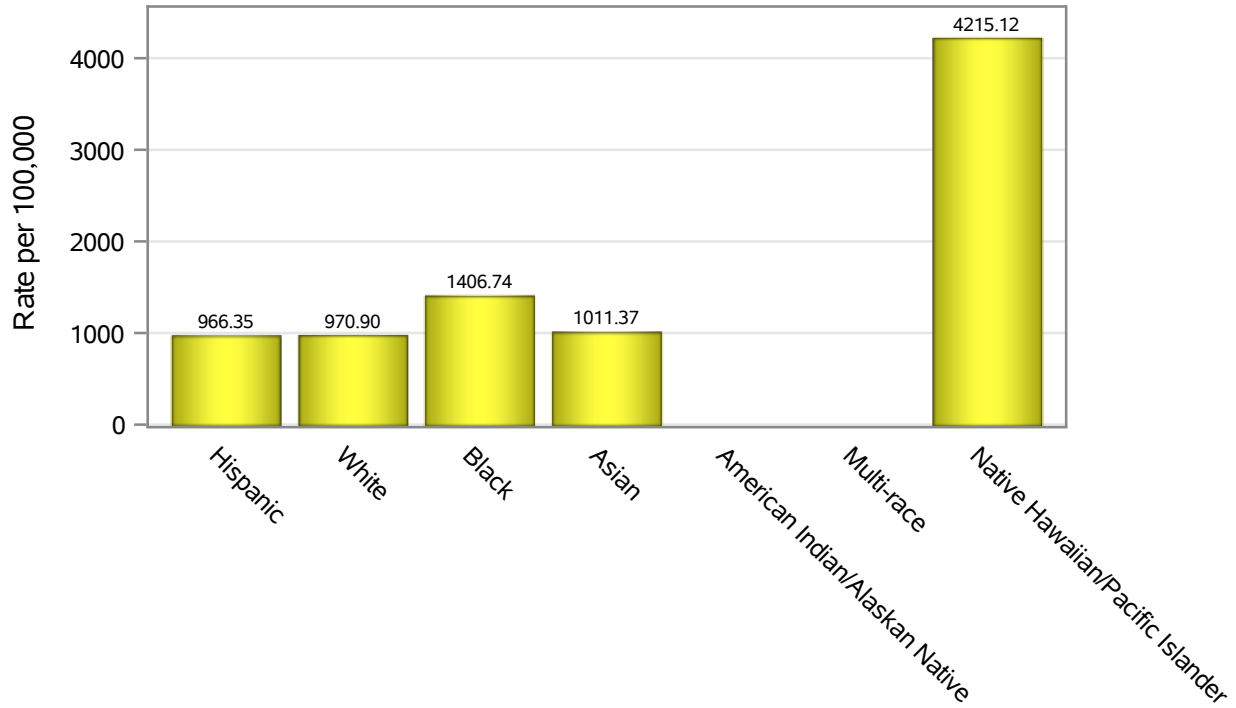


Investigations are ongoing; data are subject to change.

Reporting through 19JAN2022

North Las Vegas zip codes include 89030, 89031, 89032, 89033, 89036, 89081, 89084, 89085, 89086, 89087.

Hospitalization Race/Ethnicity Rates in North Las Vegas

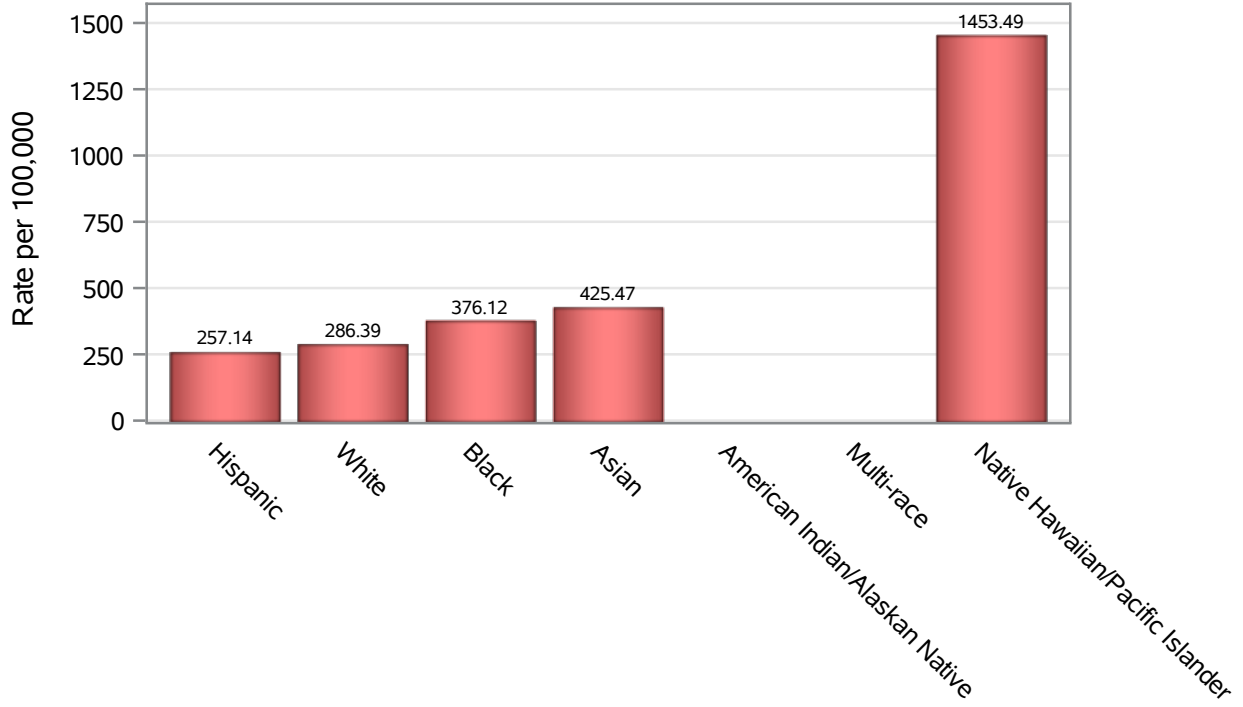


Investigations are ongoing; data are subject to change.

Reporting through 19JAN2022

North Las Vegas zip codes include 89030, 89031, 89032, 89033, 89036, 89081, 89084, 89085, 89086, 89087.

Death Race/Ethnicity Rates in North Las Vegas



Investigations are ongoing; data are subject to change.

Reporting through 19JAN2022

North Las Vegas zip codes include 89030, 89031, 89032, 89033, 89036, 89081, 89084, 89085, 89086, 89087.

Table 6: Race/Ethnicity and COVID19 in North Las Vegas

Case Status	Race Ethnicity Categories	N	%	Population	Rate per 100,000
Cases	Hispanic	20329	39.8	96,445	21078
	White	8358	16.4	63,549	13152
	Black	8394	16.4	47,059	17837
	Asian	2307	4.5	14,337	16091
	American Indian/Alaskan Native	50	0.1	890	5618.0
	Multi-race	149	0.3	9,719	1533.1
	Native Hawaiian/Pacific Islander	685	1.3	1,376	49782
	Unknown	10760	21.1	.	.
Hospitalizations	Hispanic	932	36.1	96,445	966.35
	White	617	23.9	63,549	970.90
	Black	662	25.6	47,059	1406.7
	Asian	145	5.6	14,337	1011.4
	American Indian/Alaskan Native	9	0.3	890	.
	Multi-race	9	0.3	9,719	.
	Native Hawaiian/Pacific Islander	58	2.2	1,376	4215.1
	Unknown	152	5.9	.	.
Deaths	Hispanic	248	35.4	96,445	257.14
	White	182	26.0	63,549	286.39
	Black	177	25.2	47,059	376.12
	Asian	61	8.7	14,337	425.47
	American Indian/Alaskan Native	4	0.6	890	.
	Multi-race	4	0.6	9,719	.
	Native Hawaiian/Pacific Islander	20	2.9	1,376	1453.5
	Unknown	5	0.7	.	.

Note1: Population data source for calculating rate estimates: U.S. Census Bureau, ACS 5-year estimate.

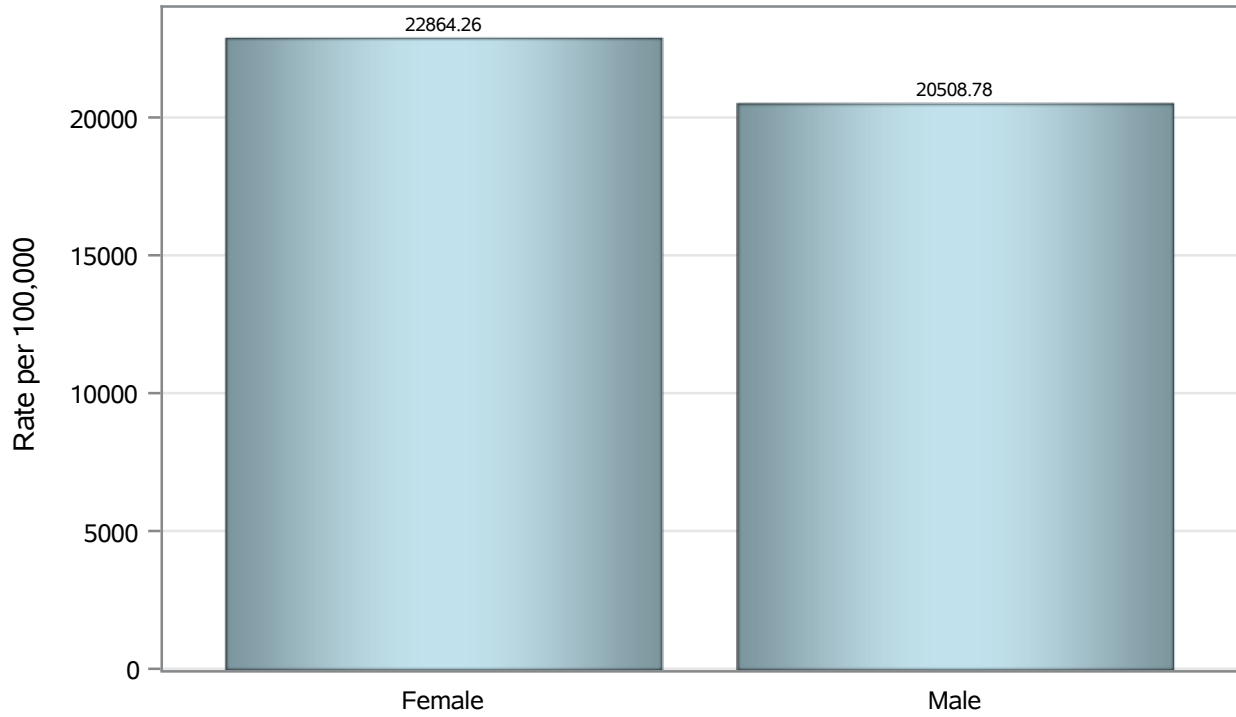
Note2: Rates for categories with fewer than 12 cases are suppressed due to high relative standard error.

Note3: Hospitalizations are regardless of deceased status; Deaths are regardless of hospitalization status

**Investigations are ongoing; data are subject to change.
Reporting through 19JAN2022**

North Las Vegas zip codes include 89030, 89031, 89032, 89033, 89036, 89081, 89084, 89085, 89086, 89087.

Case Birth Sex Rates in North Las Vegas

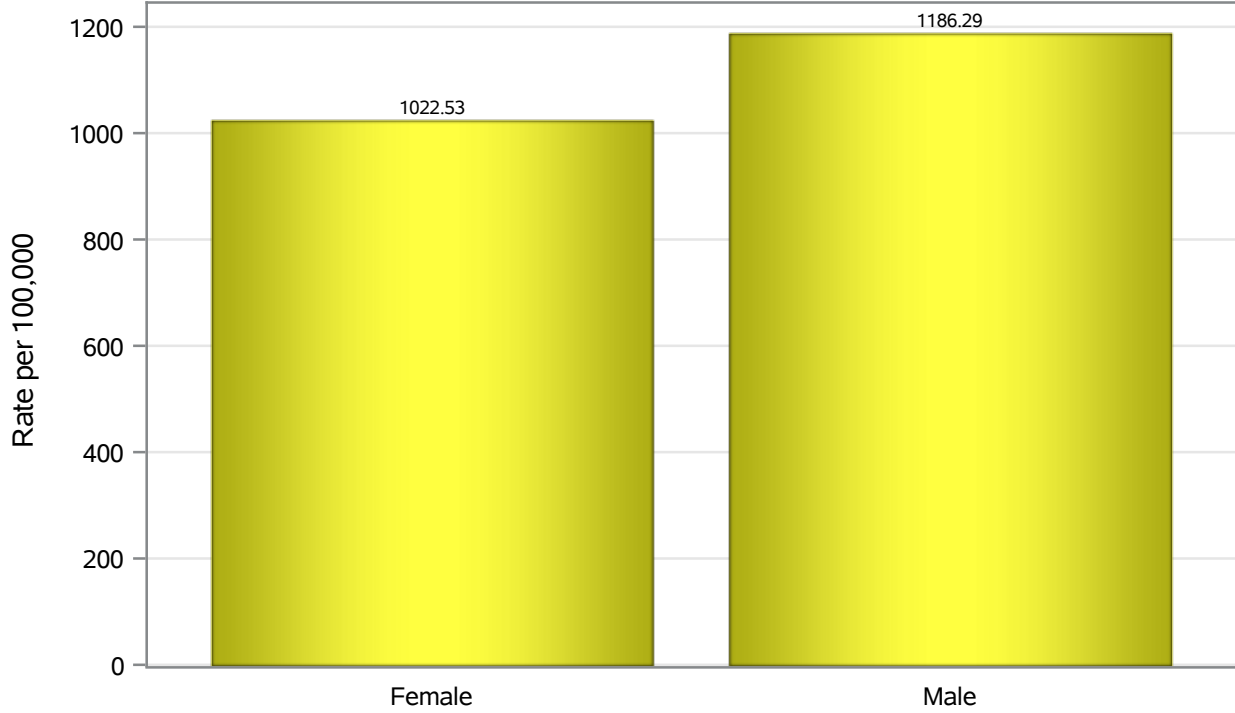


Investigations are ongoing; data are subject to change.

Reporting through 19JAN2022

North Las Vegas zip codes include 89030, 89031, 89032, 89033, 89036, 89081, 89084, 89085, 89086, 89087.

Hospitalization Birth Sex Rates in North Las Vegas

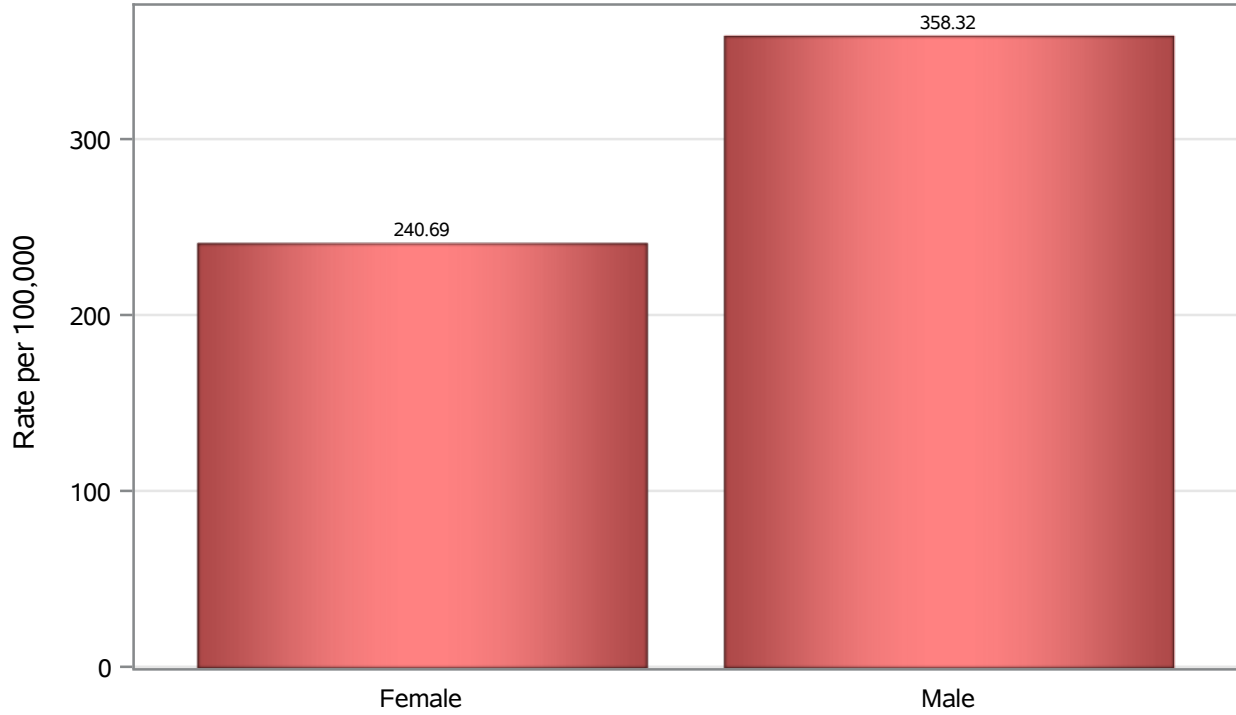


Investigations are ongoing; data are subject to change.

Reporting through 19JAN2022

North Las Vegas zip codes include 89030, 89031, 89032, 89033, 89036, 89081, 89084, 89085, 89086, 89087.

Death Birth Sex Rates in North Las Vegas



Investigations are ongoing; data are subject to change.

Reporting through 19JAN2022

North Las Vegas zip codes include 89030, 89031, 89032, 89033, 89036, 89081, 89084, 89085, 89086, 89087.

Table 7: Birth Sex and COVID19 in North Las Vegas

Case Status	Birth Sex Categories	N	%	Population	Rate per 100,000
Cases	Female	27168	53.2	118823	22864
	Male	23581	46.2	114980	20509
	Unknown	283	0.6	.	.
Hospitalizations	Female	1215	47.0	118823	1022.5
	Male	1364	52.8	114980	1186.3
	Unknown	5	0.2	.	.
Deaths	Female	286	40.8	118823	240.69
	Male	412	58.8	114980	358.32
	Unknown	3	0.4	.	.

Note1: Population data source for calculating rate estimates: U.S. Census Bureau, ACS 5-year estimate.

Note2: Rates for categories with fewer than 12 cases are suppressed due to high relative standard error.

Note3: Hospitalizations are regardless of deceased status; Deaths are regardless of hospitalization status

**Investigations are ongoing; data are subject to change.
Reporting through 19JAN2022**

North Las Vegas zip codes include 89030, 89031, 89032, 89033, 89036, 89081, 89084, 89085, 89086, 89087.