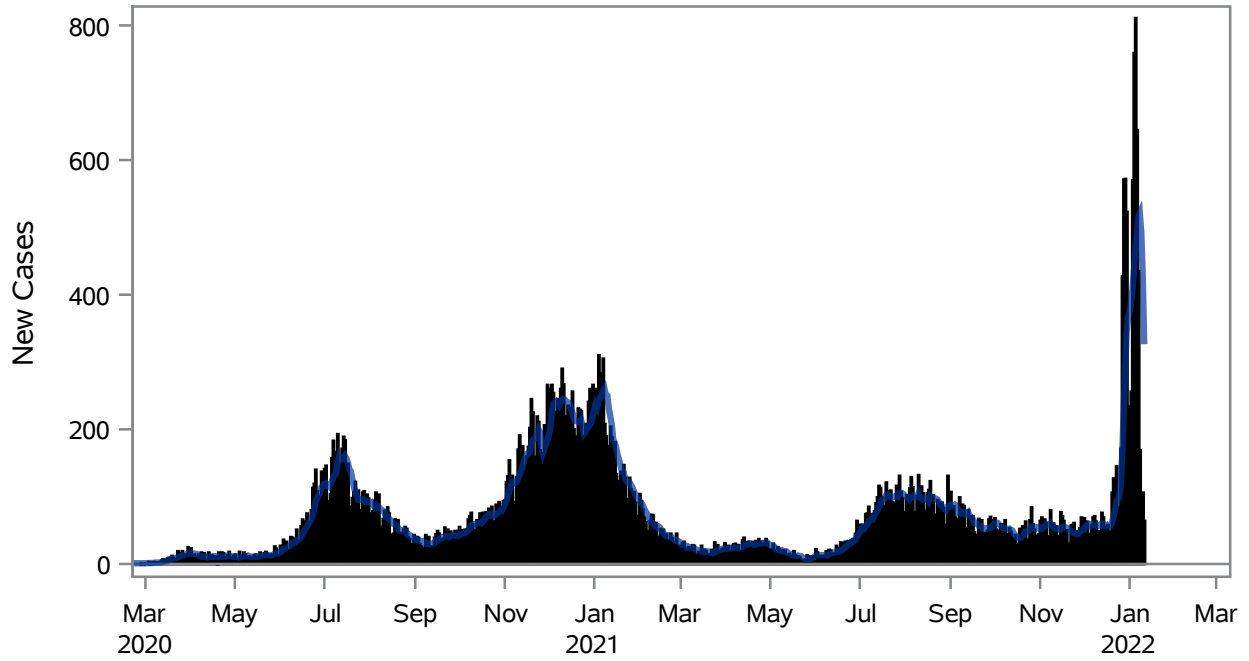


COVID19 Cases for North Las Vegas, 7-Day Moving Average



■ New Cases — 7-Day Moving Average

Investigations are ongoing; data are subject to change.

Reporting through 12JAN2022

North Las Vegas zip codes include 89030, 89031, 89032, 89033, 89036, 89081, 89084, 89085, 89086, 89087.

Table 1: New COVID19 Cases and 7-Day Moving Average in North Las Vegas, Previous Two Weeks

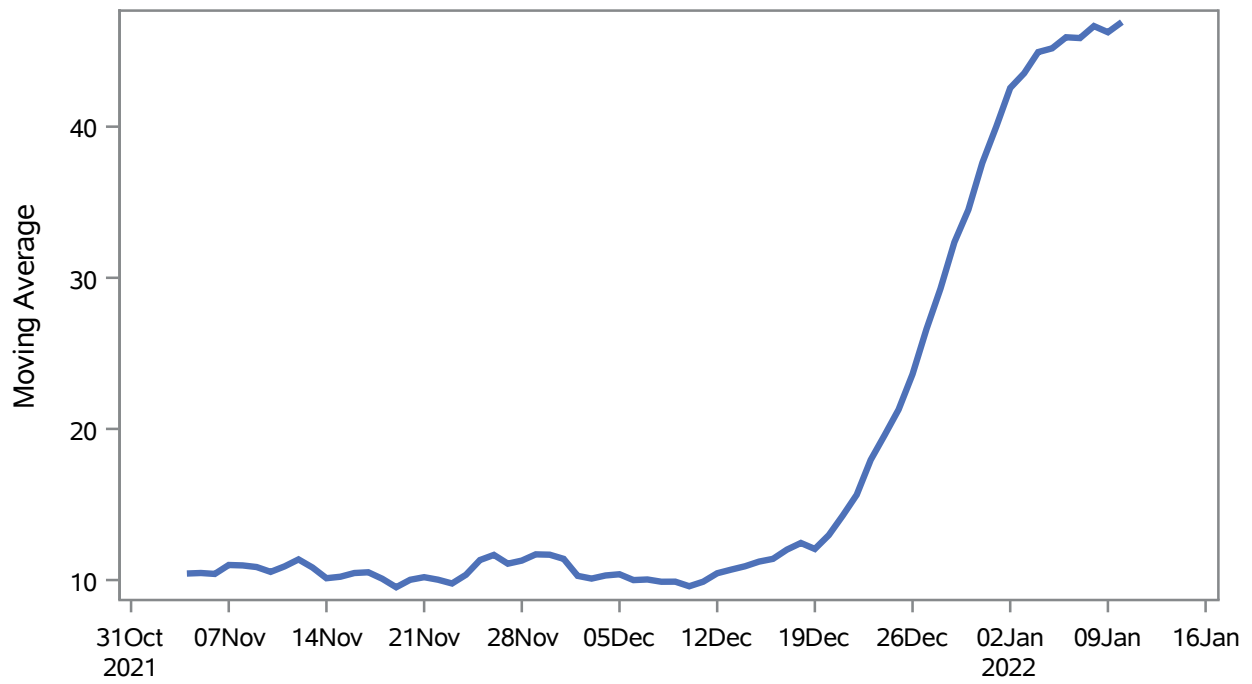
Date (Daily)	New Cases	7-Day Moving Average
30DEC2021	523	344.71
31DEC2021	234	366.14
01JAN2022	132	375.71
02JAN2022	256	387.86
03JAN2022	570	408.29
04JAN2022	759	435.14
05JAN2022	811	469.29
06JAN2022	644	486.57
07JAN2022	435	515.29
08JAN2022	169	520.57
09JAN2022	56	492.00
10JAN2022	106	425.71

Note1: Event Date is calculated as follows based on completed information:
1) Disease onset date 2) Disease diagnosis date 3) Lab result collection date 4) Report date to SNHD.

**Investigations are ongoing; data are subject to change.
Reporting through 12JAN2022**

North Las Vegas zip codes include 89030, 89031, 89032, 89033, 89036, 89081, 89084, 89085, 89086, 89087.

Percent of People Receiving COVID-19 Viral Tests Who Have Positive Results in North Las Vegas



Investigations are ongoing; data are subject to change.

Reporting through 12JAN2022

North Las Vegas zip codes include 89030, 89031, 89032, 89033, 89036, 89081, 89084, 89085, 89086, 89087.

Table 2: Percent of People Receiving COVID-19 Viral Tests Who Have Positive Results in North Las Vegas

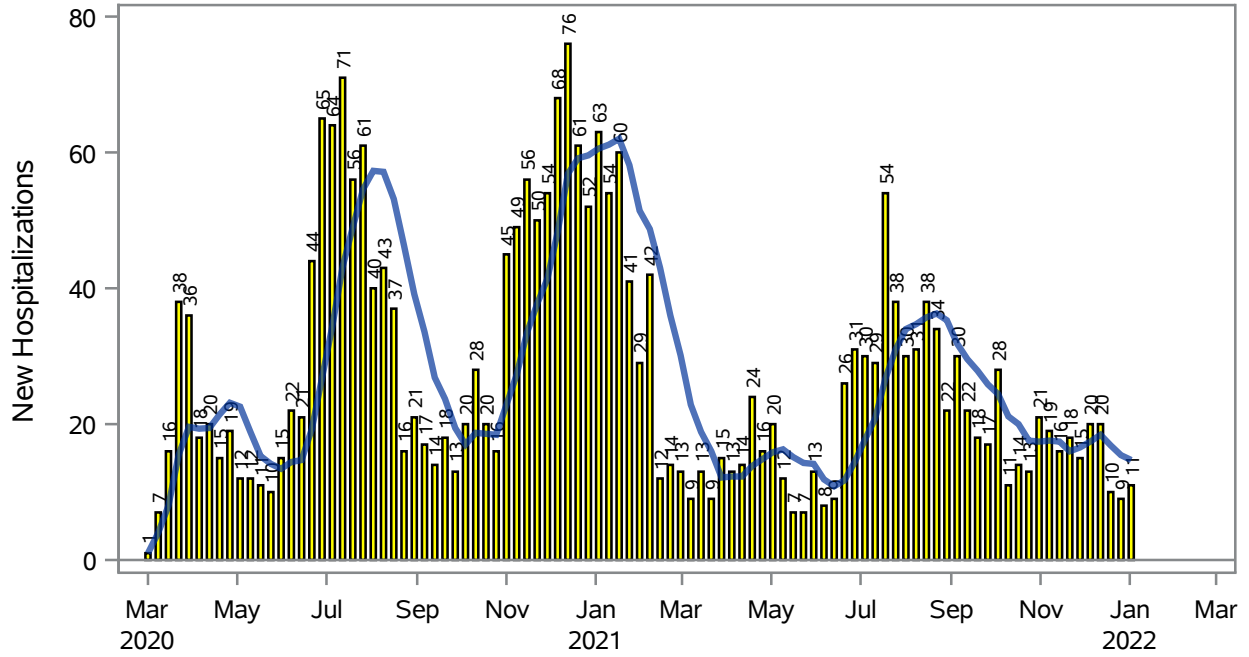
Collection Date	Positive	Negative	Equivocal	Total	% Positivity	7-Day Moving Average
27DEC2021	563	918	1	1492	37.73	26.6
28DEC2021	704	1165	1	1890	37.25	29.3
29DEC2021	833	1156	1	2016	41.32	32.4
30DEC2021	811	1155	2	1994	40.67	34.5
31DEC2021	354	393		752	47.07	37.6
01JAN2022	166	207	1	377	44.03	40.0
02JAN2022	435	432	3	873	49.83	42.6
03JAN2022	1001	1216	2	2246	44.57	43.5
04JAN2022	1223	1348	1	2600	47.04	44.9
05JAN2022	1290	1668	2	2996	43.06	45.2
06JAN2022	1056	1220	1	2306	45.79	45.9
07JAN2022	866	957	2	1854	46.71	45.9
08JAN2022	348	343	1	702	49.57	46.7
09JAN2022	211	238		449	46.99	46.2
10JAN2022	829	831	1	1683	49.26	46.9

Note: Testing Data includes a 3 day delay

**Investigations are ongoing; data are subject to change.
Reporting through 12JAN2022**

North Las Vegas zip codes include 89030, 89031, 89032, 89033, 89036, 89081, 89084, 89085, 89086, 89087.

COVID19 Hospitalizations for North Las Vegas, 7-Day Moving Average



■ New Hospitalizations
 — 7-Day Moving Average

Investigations are ongoing; data are subject to change.

Reporting through 12JAN2022

North Las Vegas zip codes include 89030, 89031, 89032, 89033, 89036, 89081, 89084, 89085, 89086, 89087.

Table 3: New COVID19-Related Hospitalizations and 7-Day Moving Average in North Las Vegas, previous month

Week	Hospitalizations	7-Day Moving Average
19DEC2021	10	16.9
26DEC2021	9	15.4
02JAN2022	11	14.7

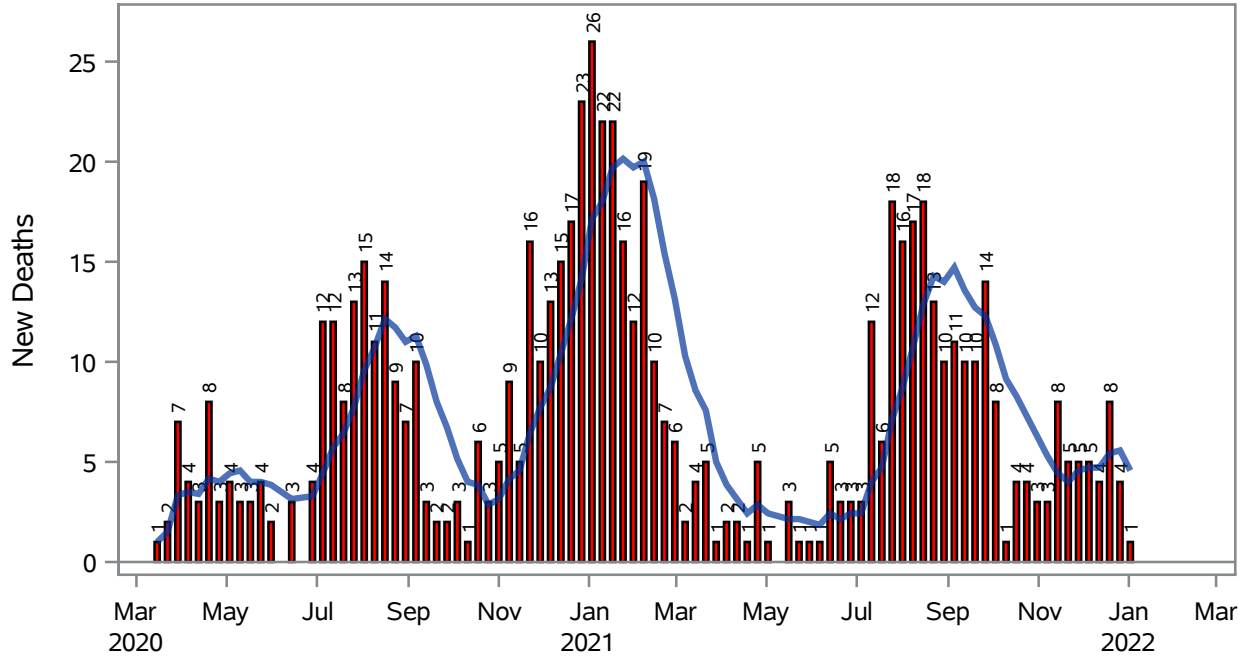
Note1: Admission Date is calculated as follows based on completed information:
A) COVID19 Case is hospitalized B) COVID19 Case has a hospital admission date.

If admission date is missing, then the following is substituted temporarily, in order:
1) Disease onset date 2) Disease diagnosis date 3) Lab result collection date 4) Report date to SNHD.

**Investigations are ongoing; data are subject to change.
Reporting through 12JAN2022**

North Las Vegas zip codes include 89030, 89031, 89032, 89033, 89036, 89081, 89084, 89085, 89086, 89087.

COVID19 Deaths for North Las Vegas, 7-Day Moving Average



■ New Deaths — 7-Day Moving Average

Investigations are ongoing; data are subject to change.

Reporting through 12JAN2022

North Las Vegas zip codes include 89030, 89031, 89032, 89033, 89036, 89081, 89084, 89085, 89086, 89087.

Table 4: New COVID19-Related Deaths and 7-Day Moving Average in North Las Vegas, Previous Month

Week	Deaths	7-Day Moving Average
19DEC2021	8	5.43
26DEC2021	4	5.57
02JAN2022	1	4.57

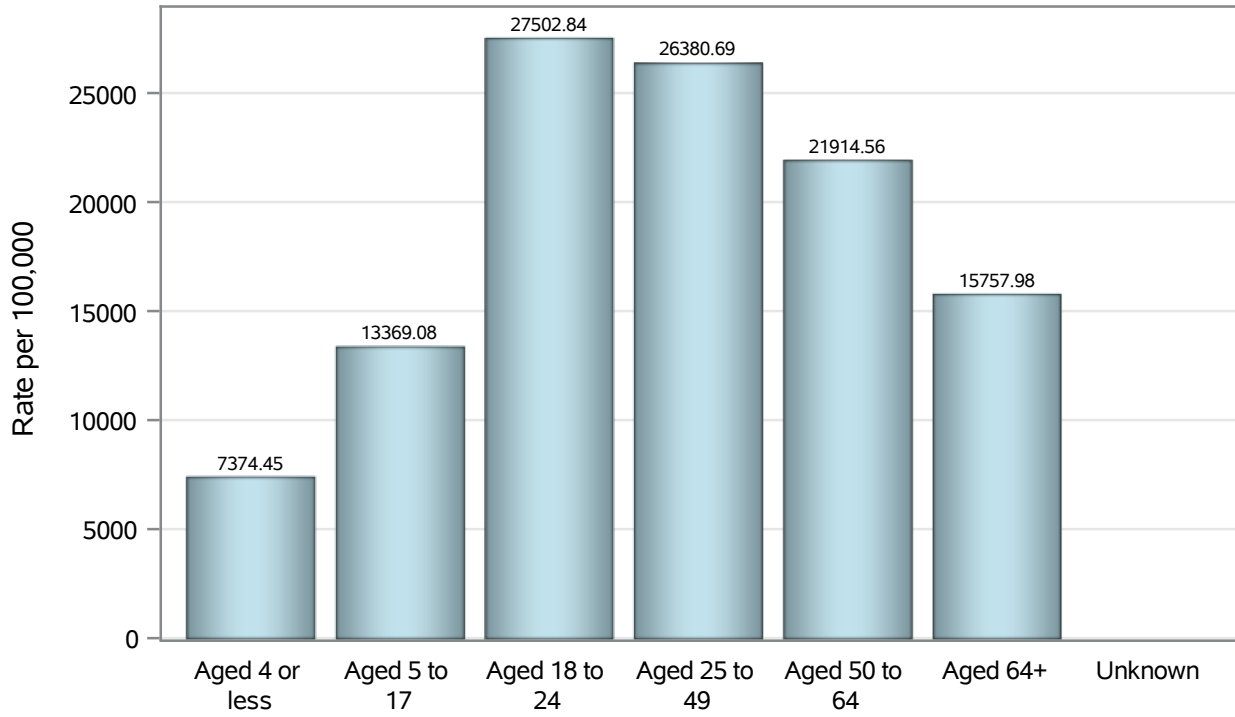
Note1: Date of Death is calculated as follows based on completed information:
A) COVID19 Case is reported as deceased B) COVID19 Case has a reported date of death.

If date of death is missing, then the following is substituted temporarily, in order:
1) Disease onset date 2) Disease diagnosis date
3) Lab result collection date 4) Report date to SNHD.

**Investigations are ongoing; data are subject to change.
Reporting through 12JAN2022**

North Las Vegas zip codes include 89030, 89031, 89032, 89033, 89036, 89081, 89084, 89085, 89086, 89087.

Case Age Rates in North Las Vegas

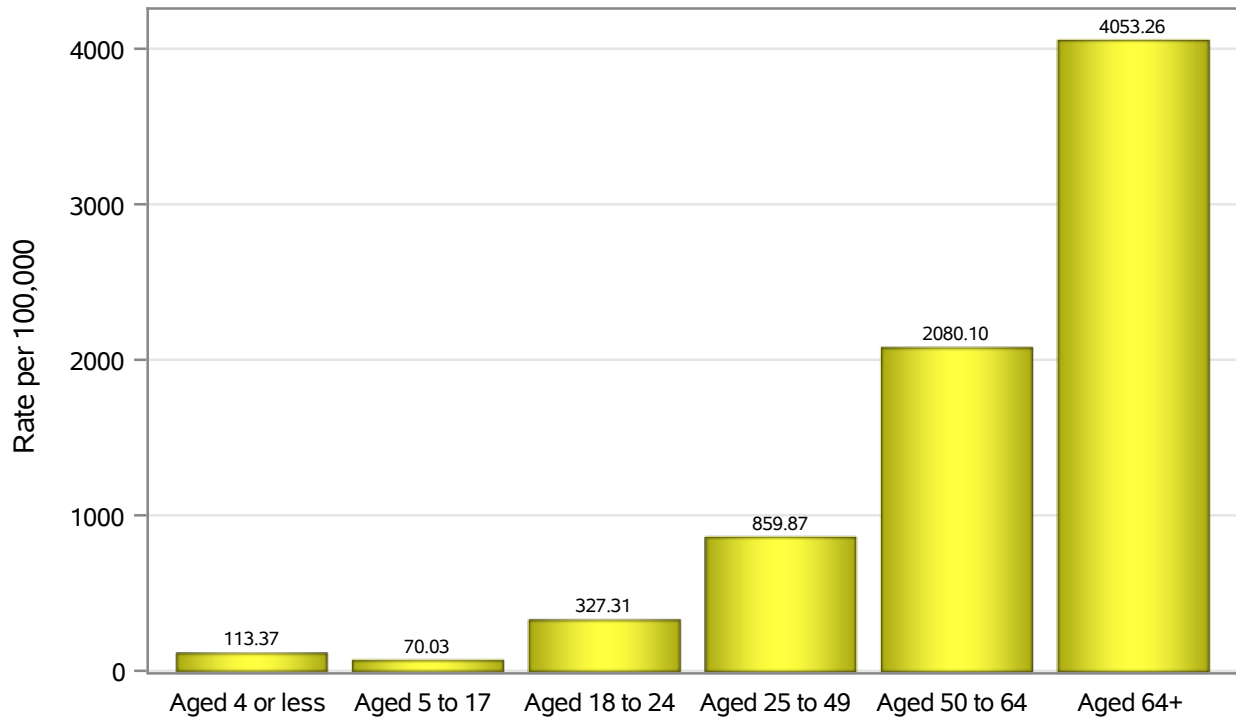


Investigations are ongoing; data are subject to change.

Reporting through 12JAN2022

North Las Vegas zip codes include 89030, 89031, 89032, 89033, 89036, 89081, 89084, 89085, 89086, 89087.

Hospitalization Age Rates in North Las Vegas

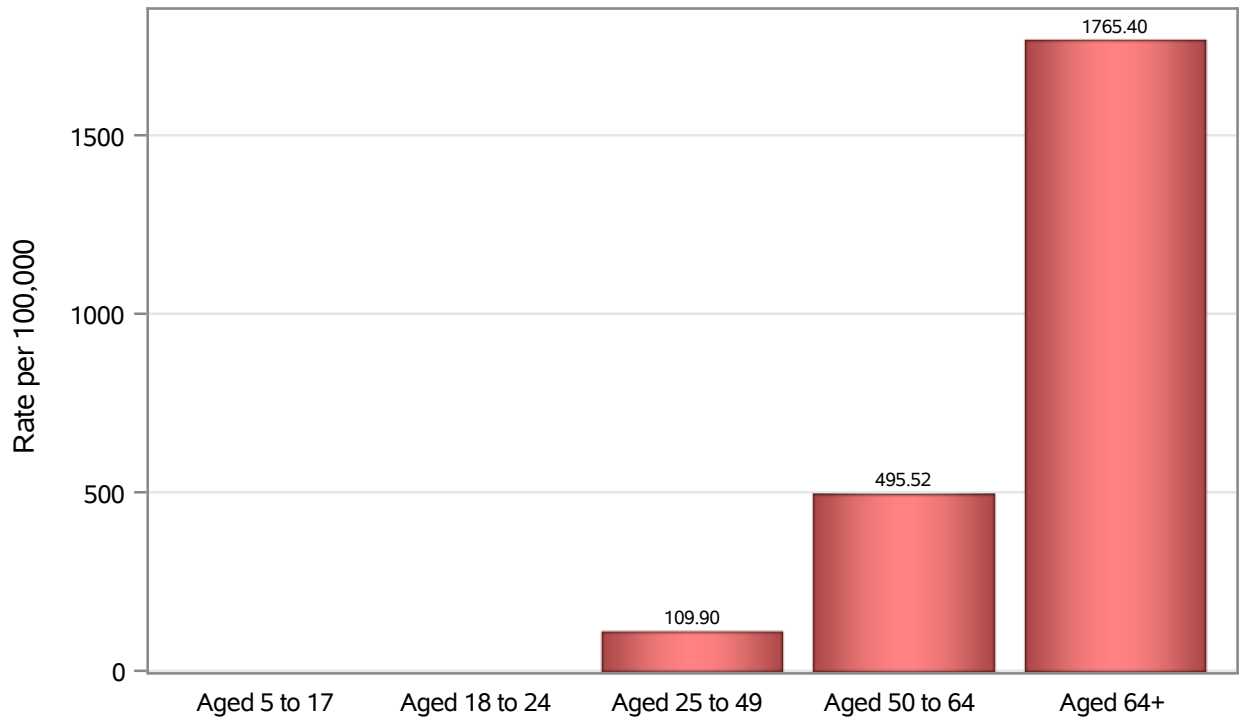


Investigations are ongoing; data are subject to change.

Reporting through 12JAN2022

North Las Vegas zip codes include 89030, 89031, 89032, 89033, 89036, 89081, 89084, 89085, 89086, 89087.

Death Age Rates in North Las Vegas



Investigations are ongoing; data are subject to change.

Reporting through 12JAN2022

North Las Vegas zip codes include 89030, 89031, 89032, 89033, 89036, 89081, 89084, 89085, 89086, 89087.

Table 5: Age and COVID19 in North Las Vegas

Case Status	Age Categories	N	%	Population	Rate per 100,000
Cases	Aged 4 or less	1301	2.7	17,642	7374.4
	Aged 5 to 17	6682	13.9	49,981	13369
	Aged 18 to 24	6302	13.1	22,914	27503
	Aged 25 to 49	21844	45.6	82,803	26381
	Aged 50 to 64	8049	16.8	36,729	21915
	Aged 64+	3740	7.8	23,734	15758
	Unknown	6	0.0	.	.
Hospitalizations	Aged 4 or less	20	0.8	17,642	113.37
	Aged 5 to 17	35	1.4	49,981	70.03
	Aged 18 to 24	75	2.9	22,914	327.31
	Aged 25 to 49	712	27.7	82,803	859.87
	Aged 50 to 64	764	29.8	36,729	2080.1
	Aged 64+	962	37.5	23,734	4053.3
	Deaths	Aged 5 to 17	1	0.1	49,981
Aged 18 to 24		1	0.1	22,914	.
Aged 25 to 49		91	13.1	82,803	109.90
Aged 50 to 64		182	26.2	36,729	495.52
Aged 64+		419	60.4	23,734	1765.4

Note1: Population data source for calculating rate estimates: U.S. Census Bureau, ACS 5-year estimate.

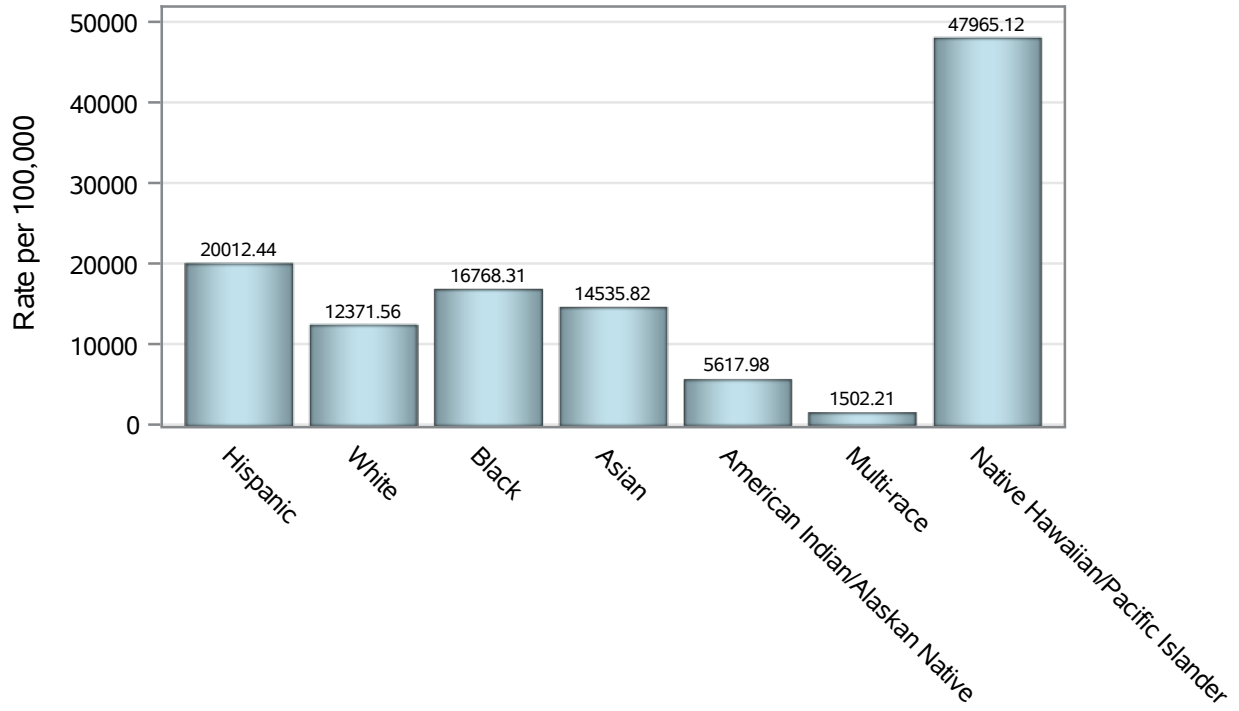
Note2: Rates for categories with fewer than 12 cases are suppressed due to high relative standard error.

Note3: Hospitalizations are regardless of deceased status; Deaths are regardless of hospitalization status

**Investigations are ongoing; data are subject to change.
Reporting through 12JAN2022**

North Las Vegas zip codes include 89030, 89031, 89032, 89033, 89036, 89081, 89084, 89085, 89086, 89087.

Case Race/Ethnicity Rates in North Las Vegas

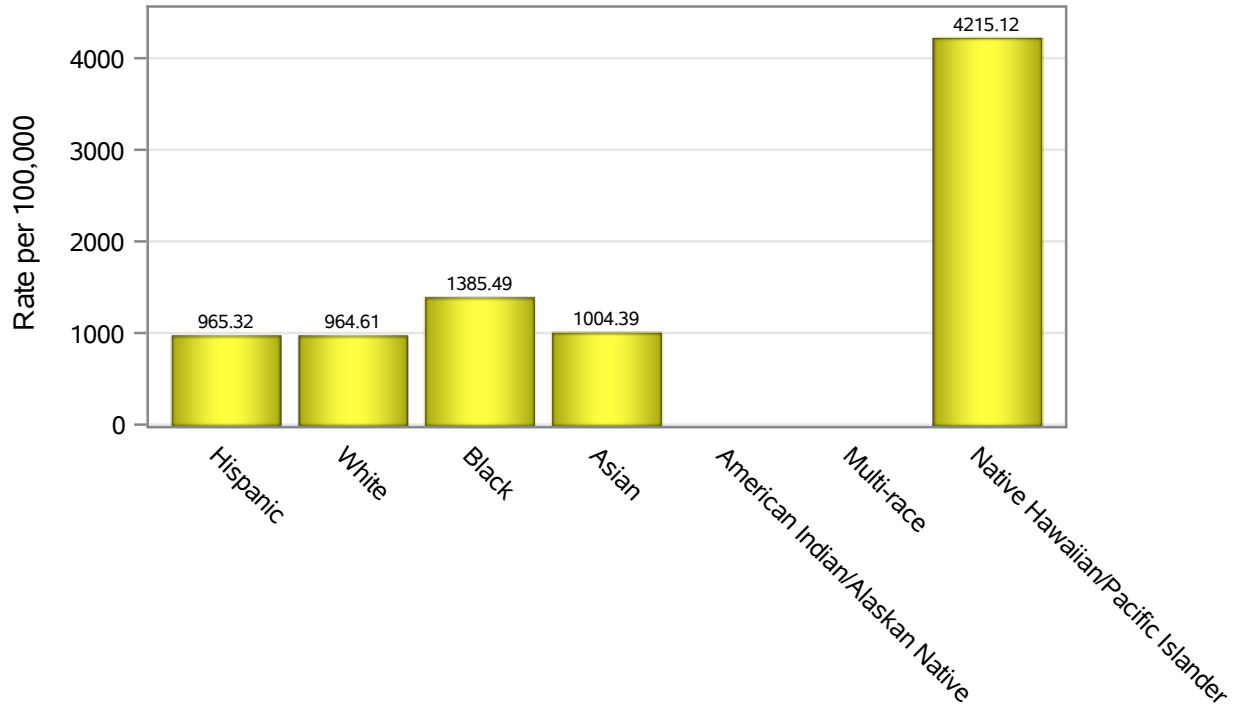


Investigations are ongoing; data are subject to change.

Reporting through 12JAN2022

North Las Vegas zip codes include 89030, 89031, 89032, 89033, 89036, 89081, 89084, 89085, 89086, 89087.

Hospitalization Race/Ethnicity Rates in North Las Vegas

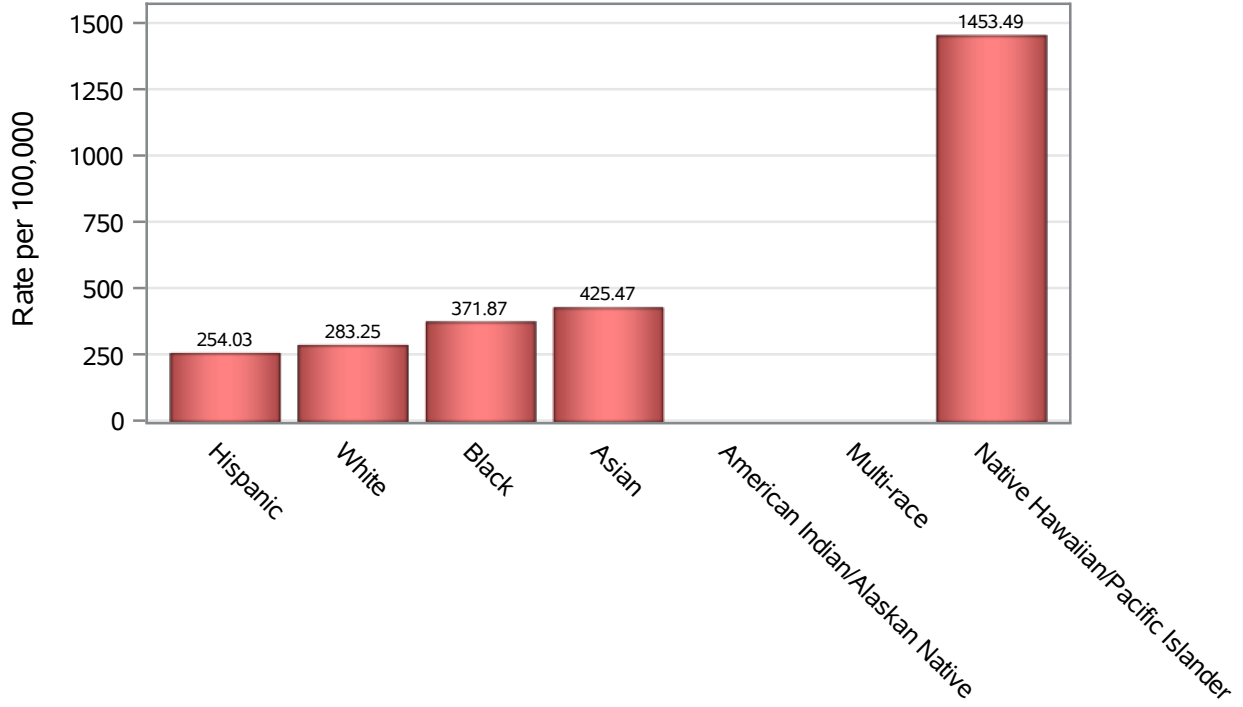


Investigations are ongoing; data are subject to change.

Reporting through 12JAN2022

North Las Vegas zip codes include 89030, 89031, 89032, 89033, 89036, 89081, 89084, 89085, 89086, 89087.

Death Race/Ethnicity Rates in North Las Vegas



Investigations are ongoing; data are subject to change.

Reporting through 12JAN2022

North Las Vegas zip codes include 89030, 89031, 89032, 89033, 89036, 89081, 89084, 89085, 89086, 89087.

Table 6: Race/Ethnicity and COVID19 in North Las Vegas

Case Status	Race Ethnicity Categories	N	%	Population	Rate per 100,000
Cases	Hispanic	19301	40.3	96,445	20012
	White	7862	16.4	63,549	12372
	Black	7891	16.5	47,059	16768
	Asian	2084	4.3	14,337	14536
	American Indian/Alaskan Native	50	0.1	890	5618.0
	Multi-race	146	0.3	9,719	1502.2
	Native Hawaiian/Pacific Islander	660	1.4	1,376	47965
	Unknown	9930	20.7	.	.
Hospitalizations	Hispanic	931	36.3	96,445	965.32
	White	613	23.9	63,549	964.61
	Black	652	25.4	47,059	1385.5
	Asian	144	5.6	14,337	1004.4
	American Indian/Alaskan Native	9	0.4	890	.
	Multi-race	9	0.4	9,719	.
	Native Hawaiian/Pacific Islander	58	2.3	1,376	4215.1
	Unknown	152	5.9	.	.
Deaths	Hispanic	245	35.3	96,445	254.03
	White	180	25.9	63,549	283.25
	Black	175	25.2	47,059	371.87
	Asian	61	8.8	14,337	425.47
	American Indian/Alaskan Native	4	0.6	890	.
	Multi-race	4	0.6	9,719	.
	Native Hawaiian/Pacific Islander	20	2.9	1,376	1453.5
	Unknown	5	0.7	.	.

Note1: Population data source for calculating rate estimates: U.S. Census Bureau, ACS 5-year estimate.

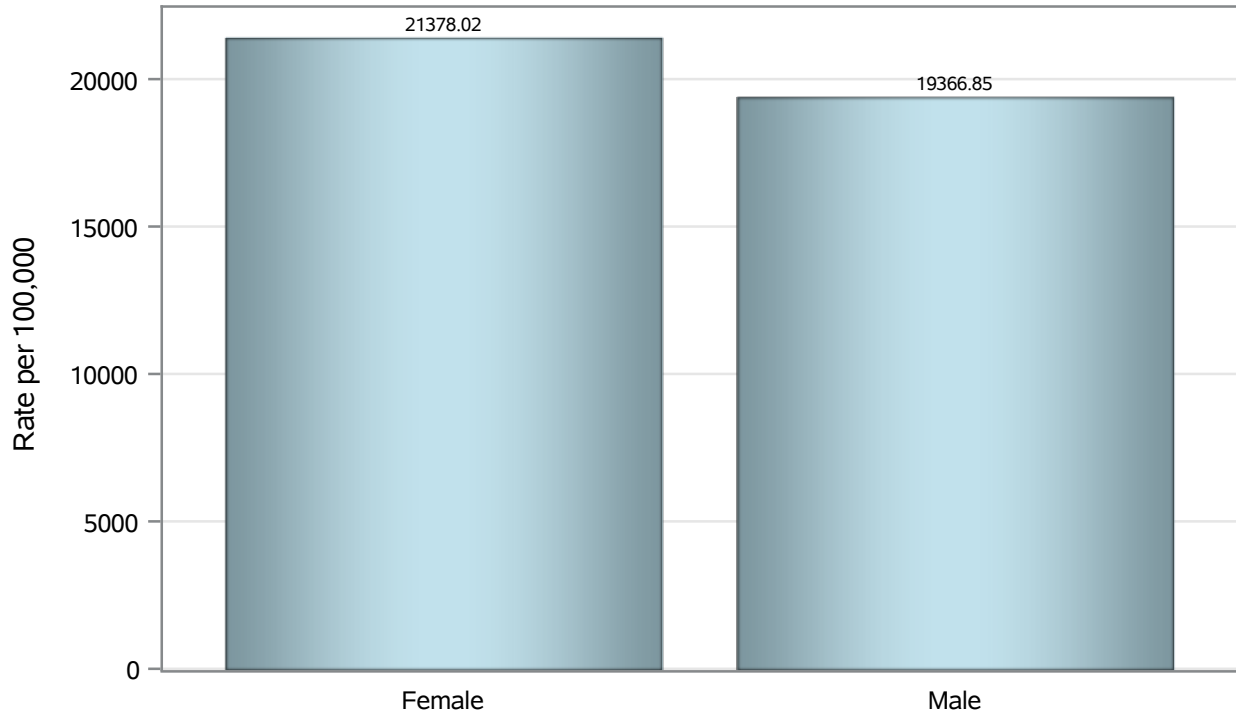
Note2: Rates for categories with fewer than 12 cases are suppressed due to high relative standard error.

Note3: Hospitalizations are regardless of deceased status; Deaths are regardless of hospitalization status

**Investigations are ongoing; data are subject to change.
Reporting through 12JAN2022**

North Las Vegas zip codes include 89030, 89031, 89032, 89033, 89036, 89081, 89084, 89085, 89086, 89087.

Case Birth Sex Rates in North Las Vegas

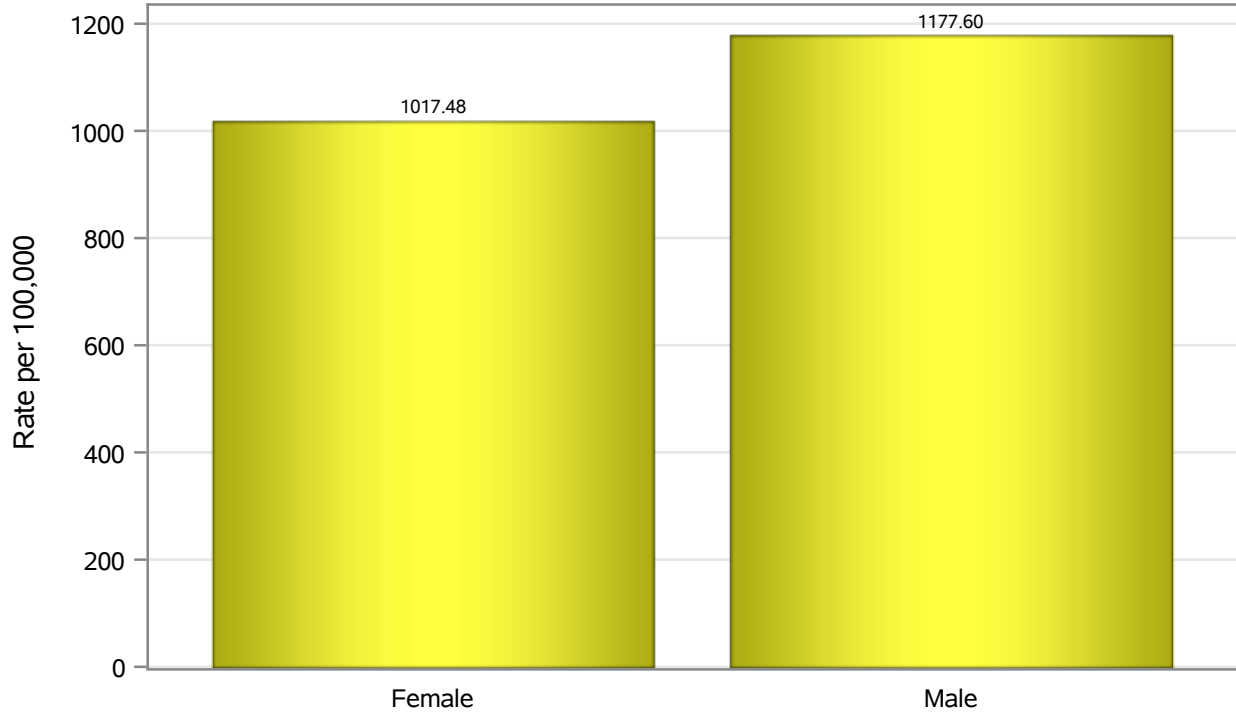


Investigations are ongoing; data are subject to change.

Reporting through 12JAN2022

North Las Vegas zip codes include 89030, 89031, 89032, 89033, 89036, 89081, 89084, 89085, 89086, 89087.

Hospitalization Birth Sex Rates in North Las Vegas

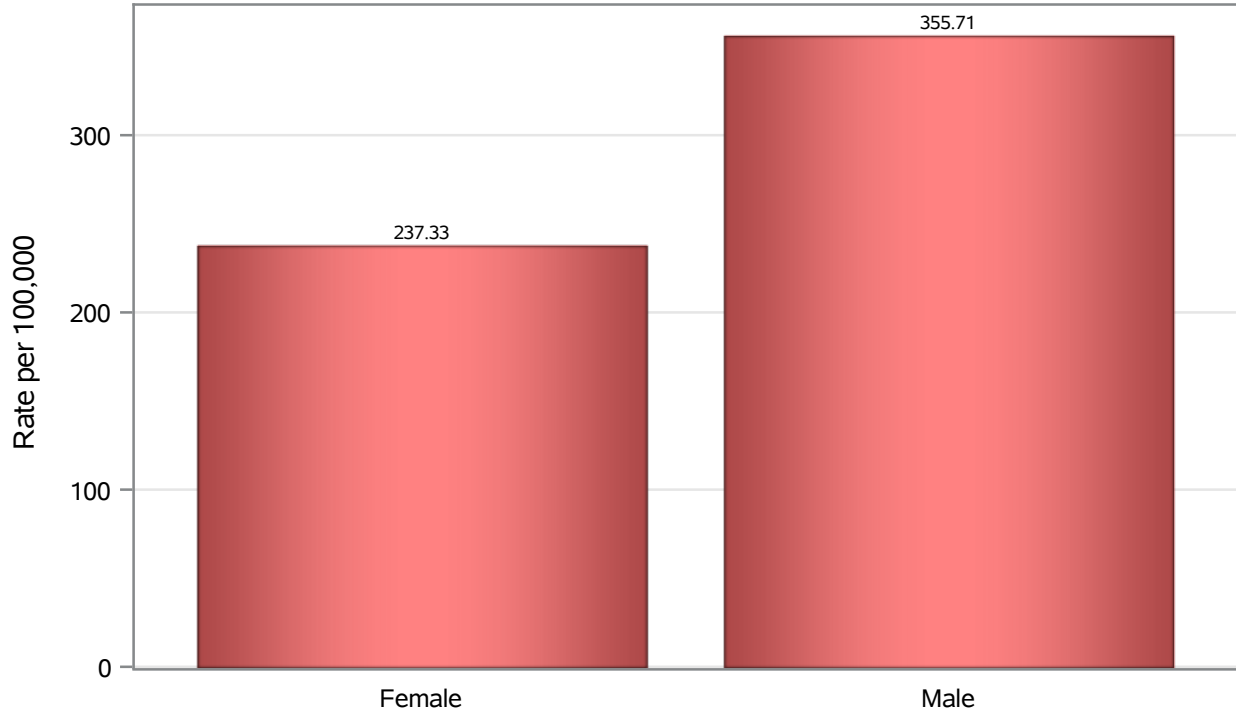


Investigations are ongoing; data are subject to change.

Reporting through 12JAN2022

North Las Vegas zip codes include 89030, 89031, 89032, 89033, 89036, 89081, 89084, 89085, 89086, 89087.

Death Birth Sex Rates in North Las Vegas



Investigations are ongoing; data are subject to change.

Reporting through 12JAN2022

North Las Vegas zip codes include 89030, 89031, 89032, 89033, 89036, 89081, 89084, 89085, 89086, 89087.

Table 7: Birth Sex and COVID19 in North Las Vegas

Case Status	Birth Sex Categories	N	%	Population	Rate per 100,000
Cases	Female	25402	53.0	118823	21378
	Male	22268	46.5	114980	19367
	Unknown	254	0.5	.	.
Hospitalizations	Female	1209	47.1	118823	1017.5
	Male	1354	52.7	114980	1177.6
	Unknown	5	0.2	.	.
Deaths	Female	282	40.6	118823	237.33
	Male	409	58.9	114980	355.71
	Unknown	3	0.4	.	.

Note1: Population data source for calculating rate estimates: U.S. Census Bureau, ACS 5-year estimate.

Note2: Rates for categories with fewer than 12 cases are suppressed due to high relative standard error.

Note3: Hospitalizations are regardless of deceased status; Deaths are regardless of hospitalization status

**Investigations are ongoing; data are subject to change.
Reporting through 12JAN2022**

North Las Vegas zip codes include 89030, 89031, 89032, 89033, 89036, 89081, 89084, 89085, 89086, 89087.