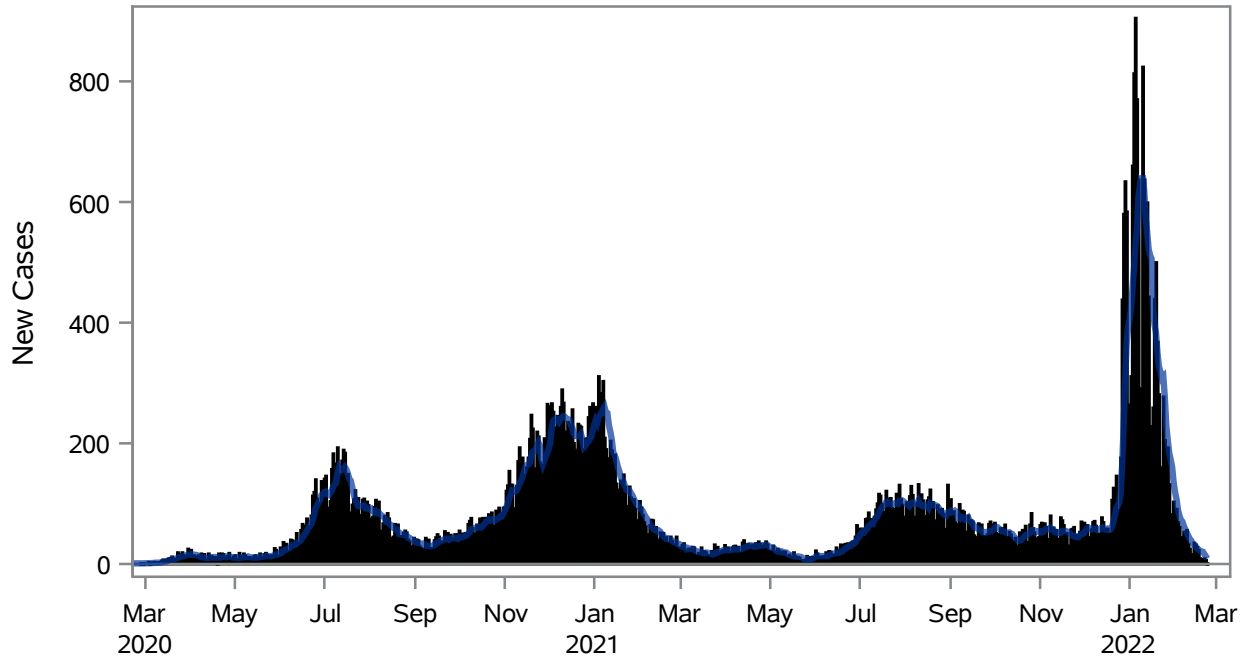


COVID19 Cases for North Las Vegas, 7-Day Moving Average



■ New Cases — 7-Day Moving Average

Investigations are ongoing; data are subject to change.

Reporting through 23FEB2022

North Las Vegas zip codes include 89030, 89031, 89032, 89033, 89036, 89081, 89084, 89085, 89086, 89087.

Table 1: New COVID19 Cases and 7-Day Moving Average in North Las Vegas, Previous Two Weeks

Date (Daily)	New Cases	7-Day Moving Average
10FEB2022	33	46.86
11FEB2022	25	41.71
12FEB2022	16	38.86
13FEB2022	10	34.00
14FEB2022	35	31.43
15FEB2022	32	29.57
16FEB2022	28	25.57
17FEB2022	23	24.14
18FEB2022	9	21.86
19FEB2022	8	20.71
20FEB2022	6	20.14
21FEB2022	9	16.43

Note1: Event Date is calculated as follows based on completed information:

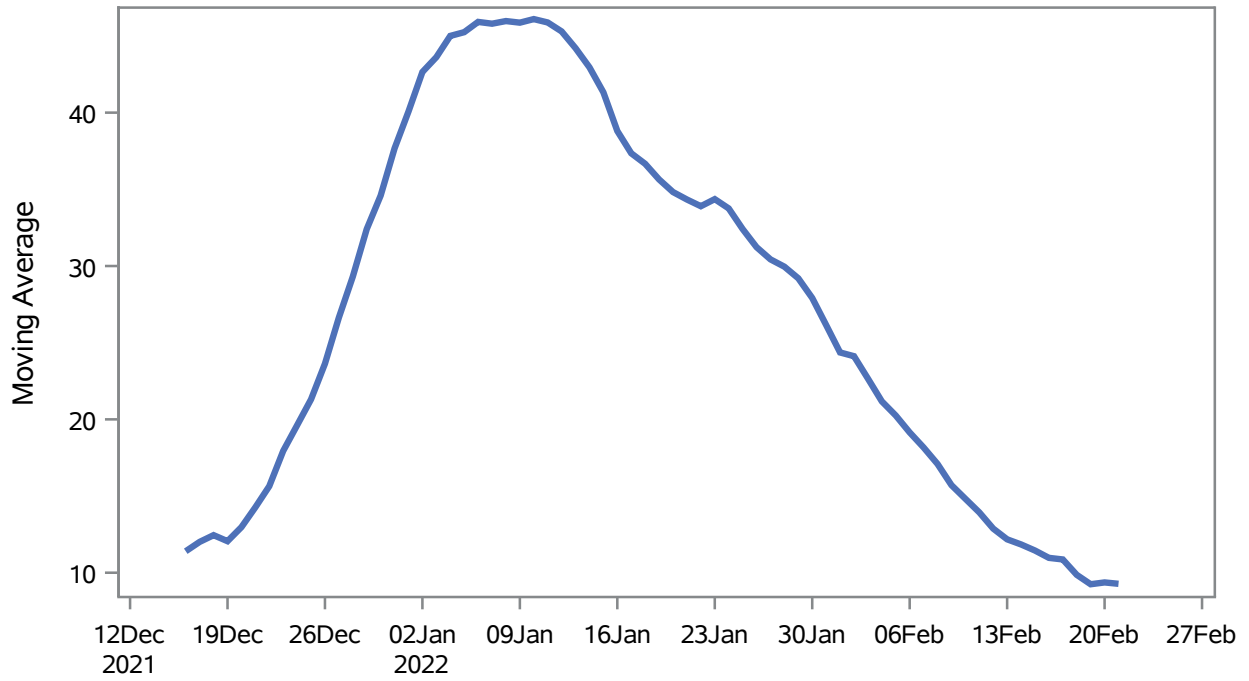
1) Disease onset date 2) Disease diagnosis date 3) Lab result collection date 4) Report date to SNHD.

Investigations are ongoing; data are subject to change.

Reporting through 23FEB2022

North Las Vegas zip codes include 89030, 89031, 89032, 89033, 89036, 89081, 89084, 89085, 89086, 89087.

Percent of People Receiving COVID-19 Viral Tests Who Have Positive Results in North Las Vegas



Investigations are ongoing; data are subject to change.

Reporting through 23FEB2022

North Las Vegas zip codes include 89030, 89031, 89032, 89033, 89036, 89081, 89084, 89085, 89086, 89087.

Table 2: Percent of People Receiving COVID-19 Viral Tests Who Have Positive Results in North Las Vegas

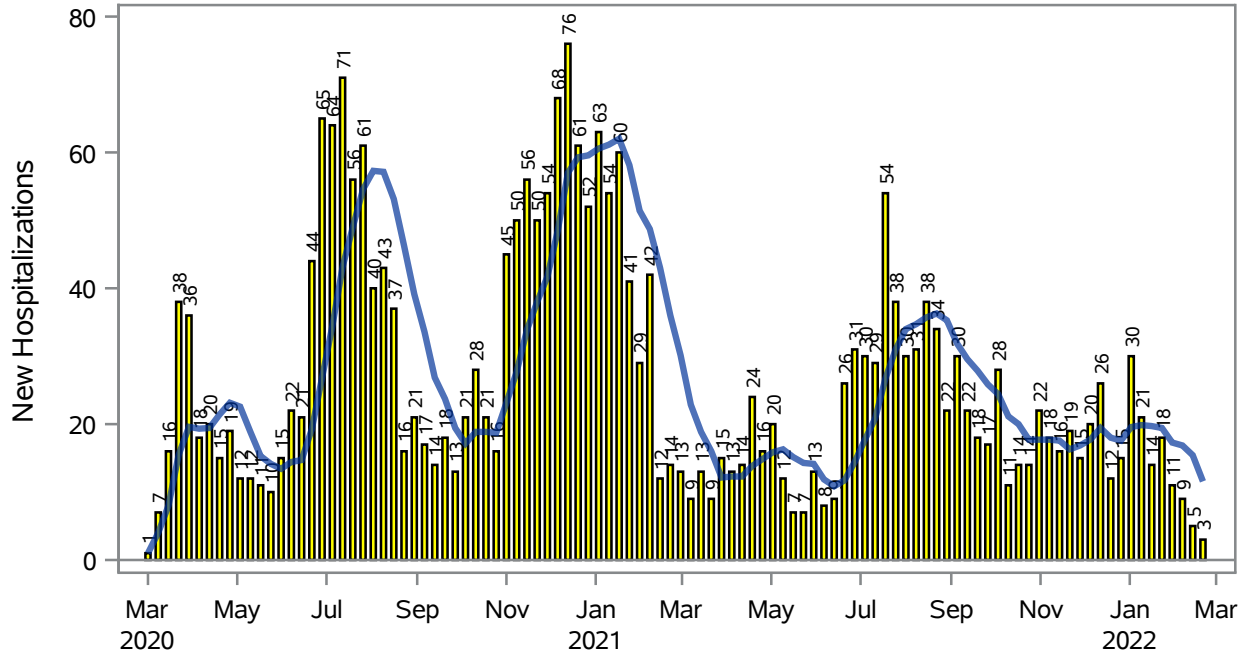
Collection Date	Positive	Negative	Equivocal	Total	% Positivity	7-Day Moving Average
07FEB2022	114	781	6	901	12.65	18.2
08FEB2022	92	727	6	825	11.15	17.1
09FEB2022	105	746	2	853	12.31	15.7
10FEB2022	72	631	3	706	10.20	14.8
11FEB2022	58	348	1	407	14.25	13.9
12FEB2022	33	251		284	11.62	12.9
13FEB2022	29	192	1	222	13.06	12.2
14FEB2022	63	543	5	611	10.31	11.8
15FEB2022	63	687	2	752	8.38	11.4
16FEB2022	63	634	6	703	8.96	11.0
17FEB2022	60	574		634	9.46	10.9
18FEB2022	32	410		442	7.24	9.86
19FEB2022	17	215		232	7.33	9.25
20FEB2022	25	155		180	13.89	9.37
21FEB2022	33	308		341	9.68	9.28

Note: Testing Data includes a 3 day delay

**Investigations are ongoing; data are subject to change.
Reporting through 23FEB2022**

North Las Vegas zip codes include 89030, 89031, 89032, 89033, 89036, 89081, 89084, 89085, 89086, 89087.

COVID19 Hospitalizations for North Las Vegas, 7-Day Moving Average



■ New Hospitalizations
 — 7-Day Moving Average

Investigations are ongoing; data are subject to change.

Reporting through 23FEB2022

North Las Vegas zip codes include 89030, 89031, 89032, 89033, 89036, 89081, 89084, 89085, 89086, 89087.

Table 3: New COVID19-Related Hospitalizations and 7-Day Moving Average in North Las Vegas, previous month

Week	Hospitalizations	7-Day Moving Average
30JAN2022	11	17.3
06FEB2022	9	16.9
13FEB2022	5	15.4
20FEB2022	3	11.6

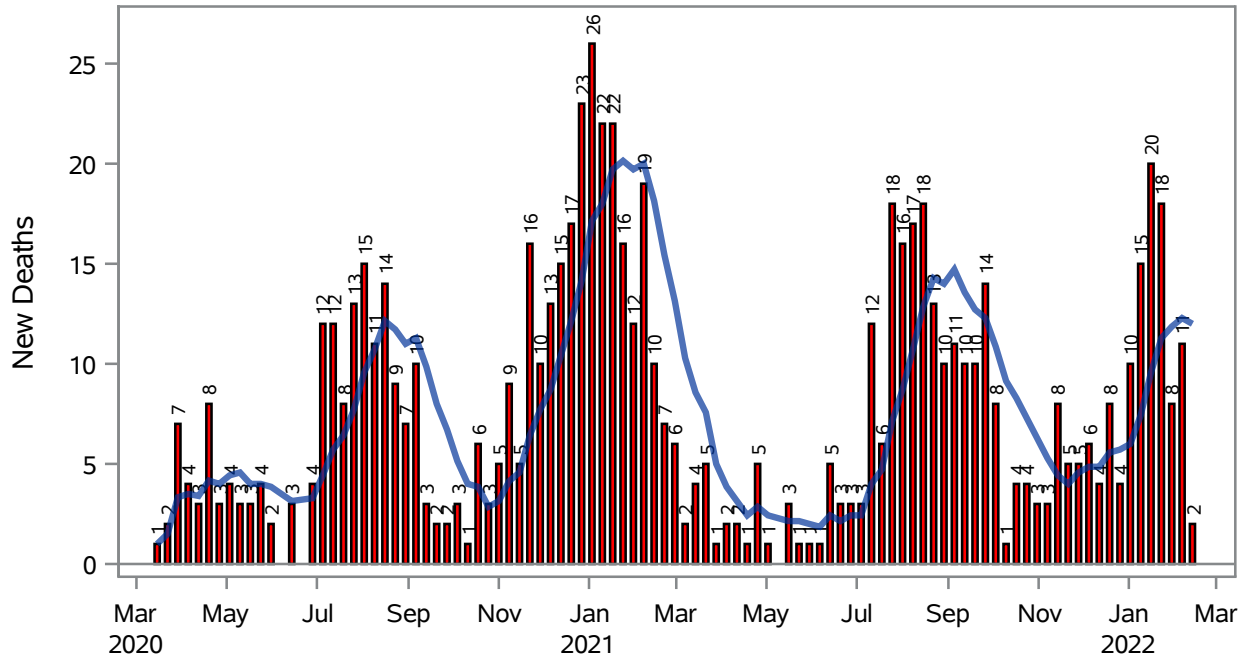
Note1: Admission Date is calculated as follows based on completed information:
A) COVID19 Case is hospitalized B) COVID19 Case has a hospital admission date.

If admission date is missing, then the following is substituted temporarily, in order:
1) Disease onset date 2) Disease diagnosis date 3) Lab result collection date 4) Report date to SNHD.

**Investigations are ongoing; data are subject to change.
Reporting through 23FEB2022**

North Las Vegas zip codes include 89030, 89031, 89032, 89033, 89036, 89081, 89084, 89085, 89086, 89087.

COVID19 Deaths for North Las Vegas, 7-Day Moving Average



■ New Deaths — 7-Day Moving Average

Investigations are ongoing; data are subject to change.

Reporting through 23FEB2022

North Las Vegas zip codes include 89030, 89031, 89032, 89033, 89036, 89081, 89084, 89085, 89086, 89087.

Table 4: New COVID19-Related Deaths and 7-Day Moving Average in North Las Vegas, Previous Month

Week	Deaths	7-Day Moving Average
30JAN2022	8	11.9
06FEB2022	11	12.3
13FEB2022	2	12.0

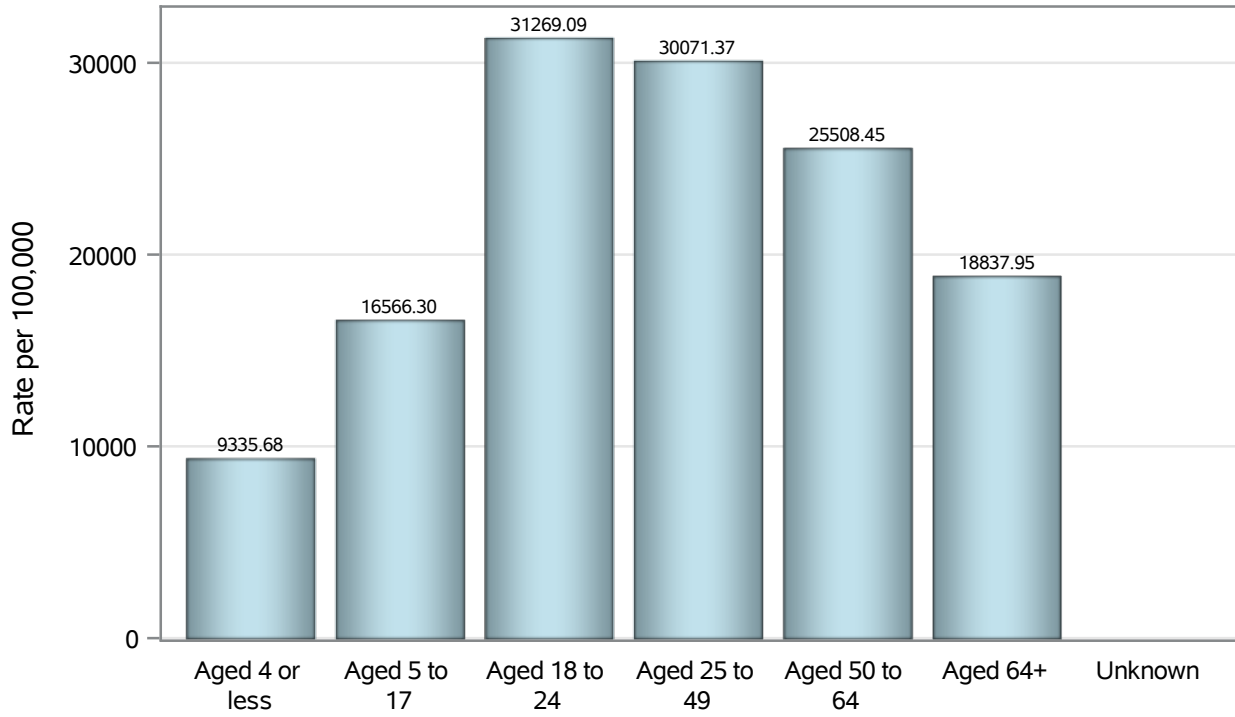
Note1: Date of Death is calculated as follows based on completed information:
A) COVID19 Case is reported as deceased B) COVID19 Case has a reported date of death.

If date of death is missing, then the following is substituted temporarily, in order:
1) Disease onset date 2) Disease diagnosis date
3) Lab result collection date 4) Report date to SNHD.

**Investigations are ongoing; data are subject to change.
Reporting through 23FEB2022**

North Las Vegas zip codes include 89030, 89031, 89032, 89033, 89036, 89081, 89084, 89085, 89086, 89087.

Case Age Rates in North Las Vegas

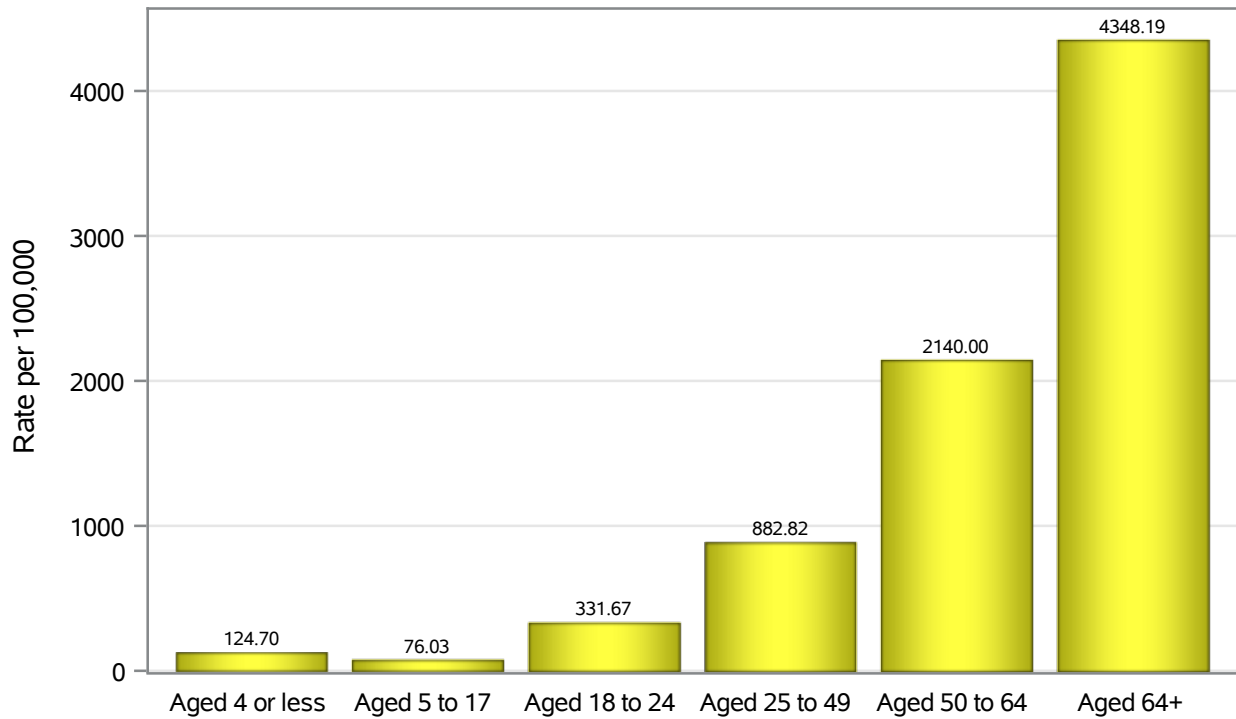


Investigations are ongoing; data are subject to change.

Reporting through 23FEB2022

North Las Vegas zip codes include 89030, 89031, 89032, 89033, 89036, 89081, 89084, 89085, 89086, 89087.

Hospitalization Age Rates in North Las Vegas

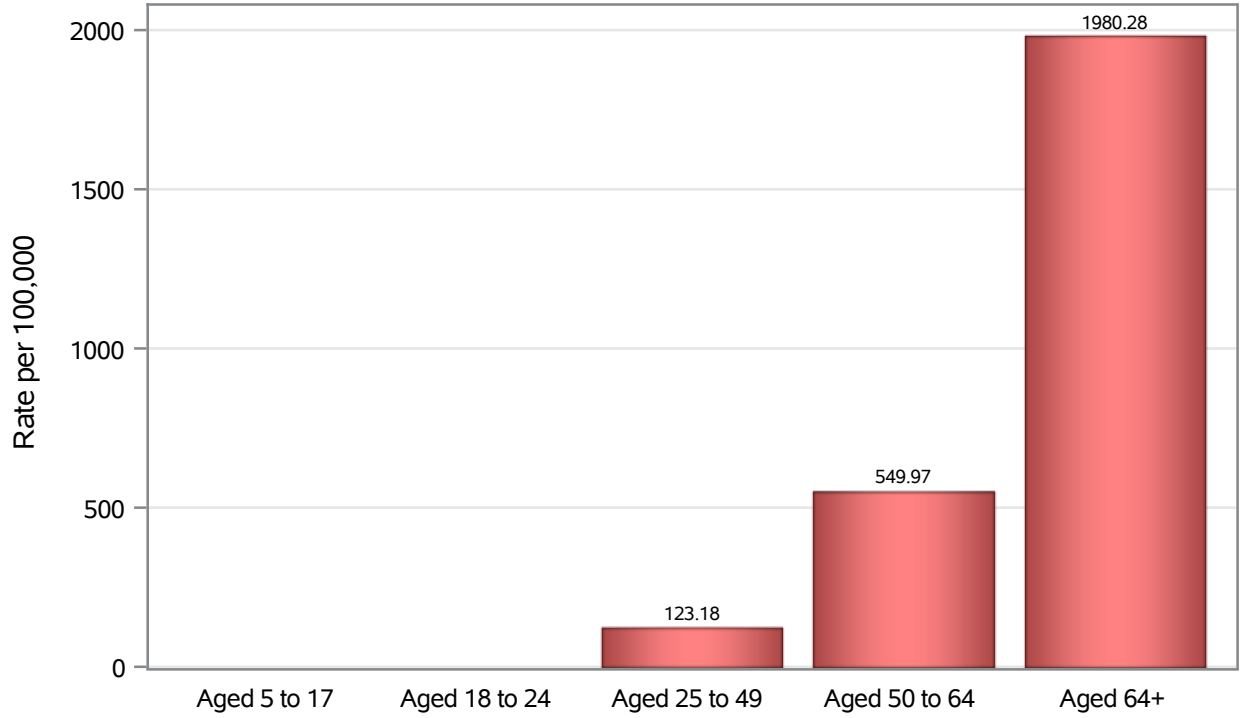


Investigations are ongoing; data are subject to change.

Reporting through 23FEB2022

North Las Vegas zip codes include 89030, 89031, 89032, 89033, 89036, 89081, 89084, 89085, 89086, 89087.

Death Age Rates in North Las Vegas



Investigations are ongoing; data are subject to change.

Reporting through 23FEB2022

North Las Vegas zip codes include 89030, 89031, 89032, 89033, 89036, 89081, 89084, 89085, 89086, 89087.

Table 5: Age and COVID19 in North Las Vegas

Case Status	Age Categories	N	%	Population	Rate per 100,000
Cases	Aged 4 or less	1647	2.9	17,642	9335.7
	Aged 5 to 17	8280	14.8	49,981	16566
	Aged 18 to 24	7165	12.8	22,914	31269
	Aged 25 to 49	24900	44.6	82,803	30071
	Aged 50 to 64	9369	16.8	36,729	25508
	Aged 64+	4471	8.0	23,734	18838
	Unknown	6	0.0	.	.
Hospitalizations	Aged 4 or less	22	0.8	17,642	124.70
	Aged 5 to 17	38	1.4	49,981	76.03
	Aged 18 to 24	76	2.8	22,914	331.67
	Aged 25 to 49	731	27.2	82,803	882.82
	Aged 50 to 64	786	29.3	36,729	2140.0
	Aged 64+	1032	38.4	23,734	4348.2
	Deaths	Aged 5 to 17	1	0.1	49,981
Aged 18 to 24		2	0.3	22,914	.
Aged 25 to 49		102	13.1	82,803	123.18
Aged 50 to 64		202	26.0	36,729	549.97
Aged 64+		470	60.5	23,734	1980.3

Note1: Population data source for calculating rate estimates: U.S. Census Bureau, ACS 5-year estimate.

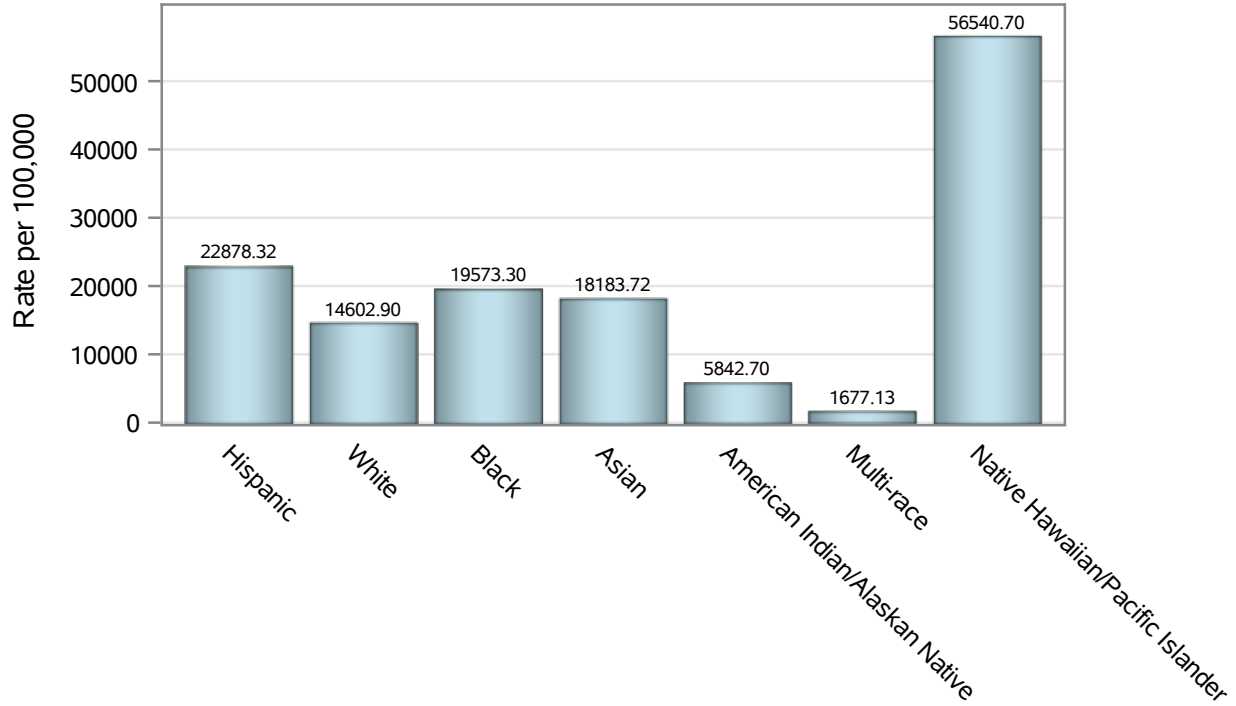
Note2: Rates for categories with fewer than 12 cases are suppressed due to high relative standard error.

Note3: Hospitalizations are regardless of deceased status; Deaths are regardless of hospitalization status

**Investigations are ongoing; data are subject to change.
Reporting through 23FEB2022**

North Las Vegas zip codes include 89030, 89031, 89032, 89033, 89036, 89081, 89084, 89085, 89086, 89087.

Case Race/Ethnicity Rates in North Las Vegas

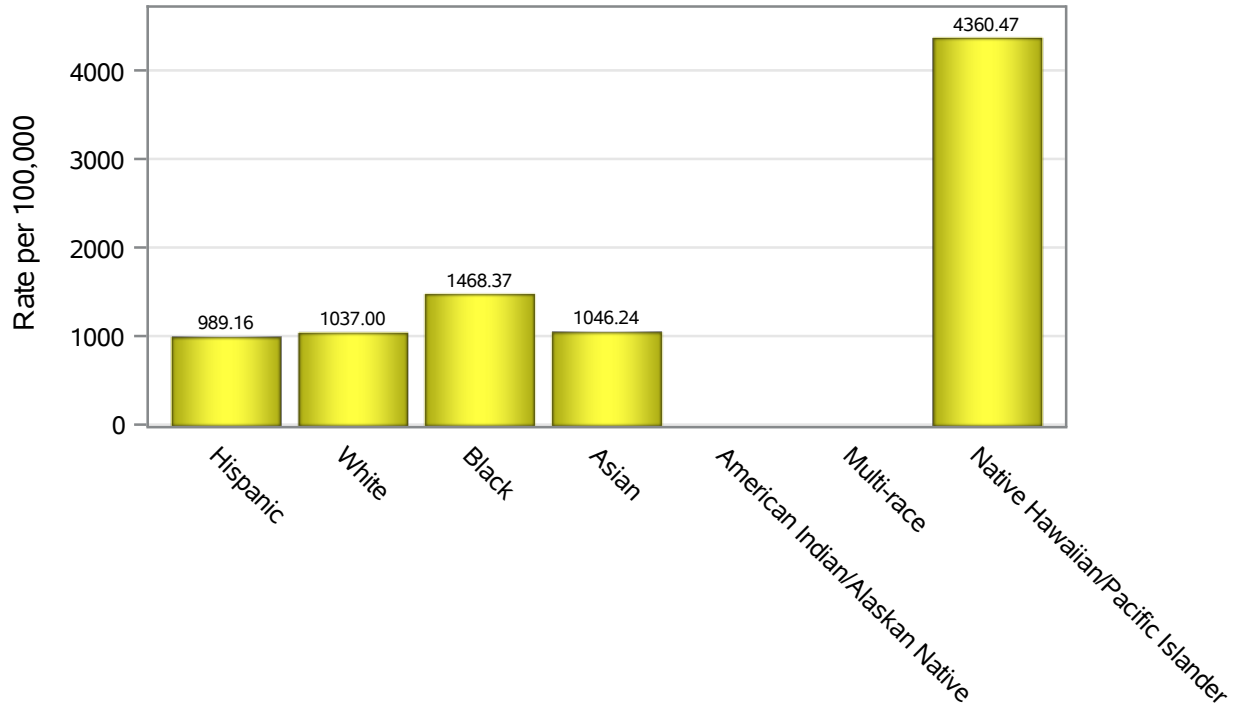


Investigations are ongoing; data are subject to change.

Reporting through 23FEB2022

North Las Vegas zip codes include 89030, 89031, 89032, 89033, 89036, 89081, 89084, 89085, 89086, 89087.

Hospitalization Race/Ethnicity Rates in North Las Vegas

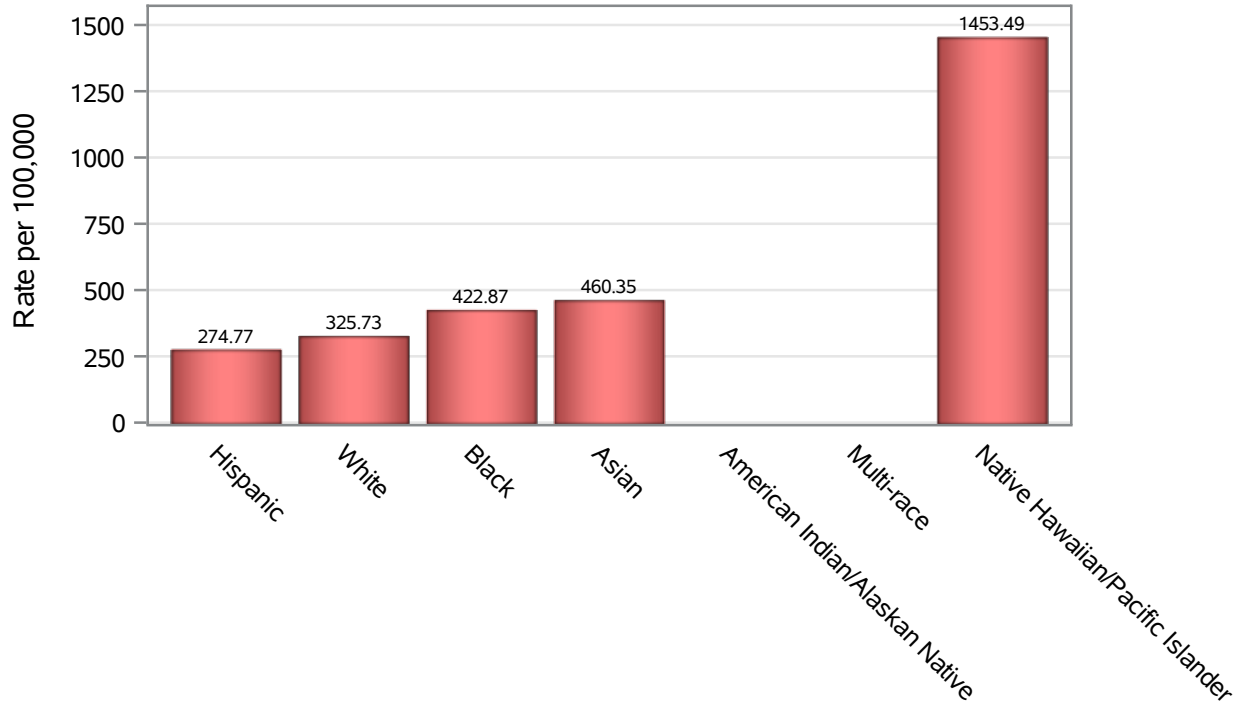


Investigations are ongoing; data are subject to change.

Reporting through 23FEB2022

North Las Vegas zip codes include 89030, 89031, 89032, 89033, 89036, 89081, 89084, 89085, 89086, 89087.

Death Race/Ethnicity Rates in North Las Vegas



Investigations are ongoing; data are subject to change.

Reporting through 23FEB2022

North Las Vegas zip codes include 89030, 89031, 89032, 89033, 89036, 89081, 89084, 89085, 89086, 89087.

Table 6: Race/Ethnicity and COVID19 in North Las Vegas

Case Status	Race Ethnicity Categories	N	%	Population	Rate per 100,000
Cases	Hispanic	22065	39.5	96,445	22878
	White	9280	16.6	63,549	14603
	Black	9211	16.5	47,059	19573
	Asian	2607	4.7	14,337	18184
	American Indian/Alaskan Native	52	0.1	890	5842.7
	Multi-race	163	0.3	9,719	1677.1
	Native Hawaiian/Pacific Islander	778	1.4	1,376	56541
	Unknown	11682	20.9	.	.
Hospitalizations	Hispanic	954	35.5	96,445	989.16
	White	659	24.5	63,549	1037.0
	Black	691	25.7	47,059	1468.4
	Asian	150	5.6	14,337	1046.2
	American Indian/Alaskan Native	10	0.4	890	.
	Multi-race	10	0.4	9,719	.
	Native Hawaiian/Pacific Islander	60	2.2	1,376	4360.5
	Unknown	151	5.6	.	.
Deaths	Hispanic	265	34.1	96,445	274.77
	White	207	26.6	63,549	325.73
	Black	199	25.6	47,059	422.87
	Asian	66	8.5	14,337	460.35
	American Indian/Alaskan Native	5	0.6	890	.
	Multi-race	6	0.8	9,719	.
	Native Hawaiian/Pacific Islander	20	2.6	1,376	1453.5
	Unknown	9	1.2	.	.

Note1: Population data source for calculating rate estimates: U.S. Census Bureau, ACS 5-year estimate.

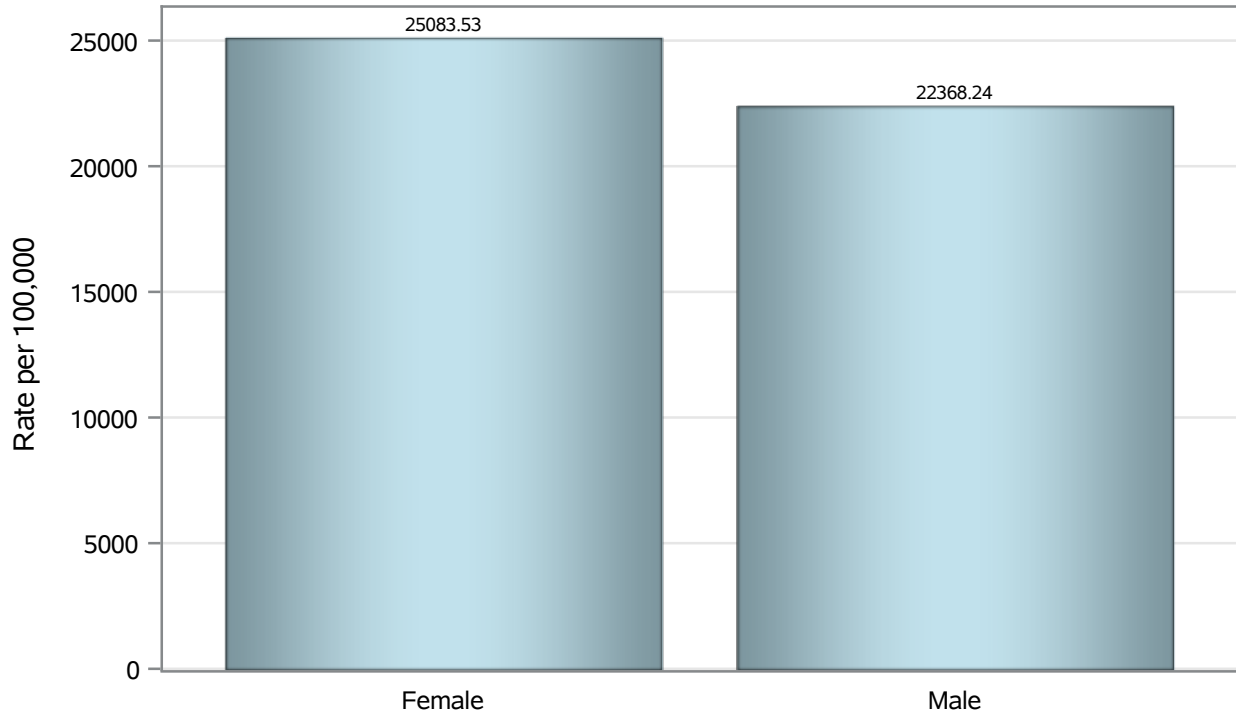
Note2: Rates for categories with fewer than 12 cases are suppressed due to high relative standard error.

Note3: Hospitalizations are regardless of deceased status; Deaths are regardless of hospitalization status

**Investigations are ongoing; data are subject to change.
Reporting through 23FEB2022**

North Las Vegas zip codes include 89030, 89031, 89032, 89033, 89036, 89081, 89084, 89085, 89086, 89087.

Case Birth Sex Rates in North Las Vegas

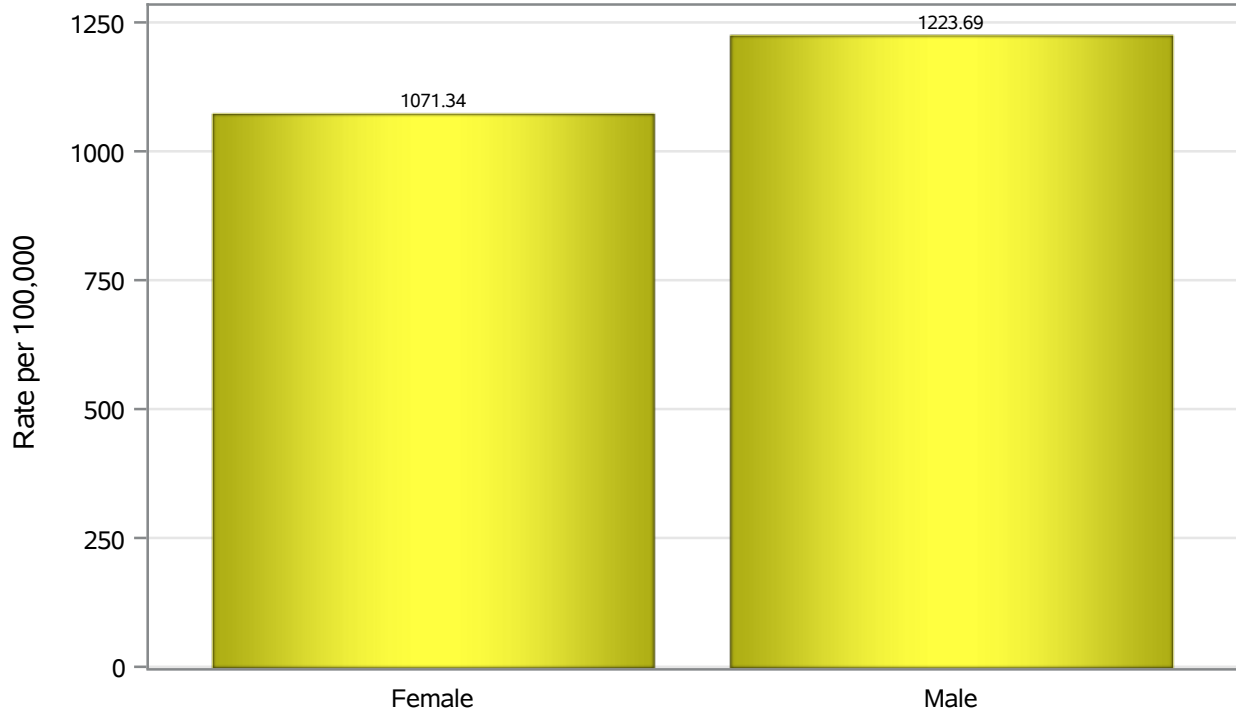


Investigations are ongoing; data are subject to change.

Reporting through 23FEB2022

North Las Vegas zip codes include 89030, 89031, 89032, 89033, 89036, 89081, 89084, 89085, 89086, 89087.

Hospitalization Birth Sex Rates in North Las Vegas

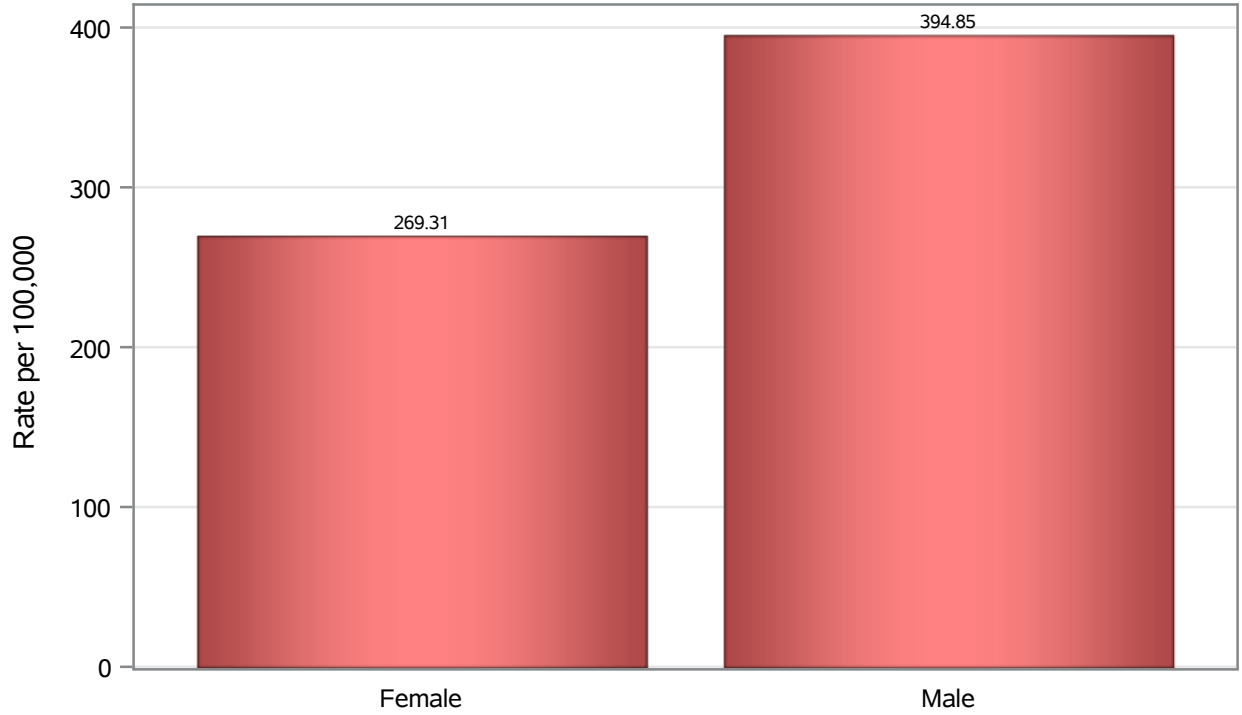


Investigations are ongoing; data are subject to change.

Reporting through 23FEB2022

North Las Vegas zip codes include 89030, 89031, 89032, 89033, 89036, 89081, 89084, 89085, 89086, 89087.

Death Birth Sex Rates in North Las Vegas



Investigations are ongoing; data are subject to change.

Reporting through 23FEB2022

North Las Vegas zip codes include 89030, 89031, 89032, 89033, 89036, 89081, 89084, 89085, 89086, 89087.

Table 7: Birth Sex and COVID19 in North Las Vegas

Case Status	Birth Sex Categories	N	%	Population	Rate per 100,000
Cases	Female	29805	53.4	118823	25084
	Male	25719	46.1	114980	22368
	Unknown	314	0.6	.	.
Hospitalizations	Female	1273	47.4	118823	1071.3
	Male	1407	52.4	114980	1223.7
	Unknown	5	0.2	.	.
Deaths	Female	320	41.2	118823	269.31
	Male	454	58.4	114980	394.85
	Unknown	3	0.4	.	.

Note1: Population data source for calculating rate estimates: U.S. Census Bureau, ACS 5-year estimate.

Note2: Rates for categories with fewer than 12 cases are suppressed due to high relative standard error.

Note3: Hospitalizations are regardless of deceased status; Deaths are regardless of hospitalization status

**Investigations are ongoing; data are subject to change.
Reporting through 23FEB2022**

North Las Vegas zip codes include 89030, 89031, 89032, 89033, 89036, 89081, 89084, 89085, 89086, 89087.