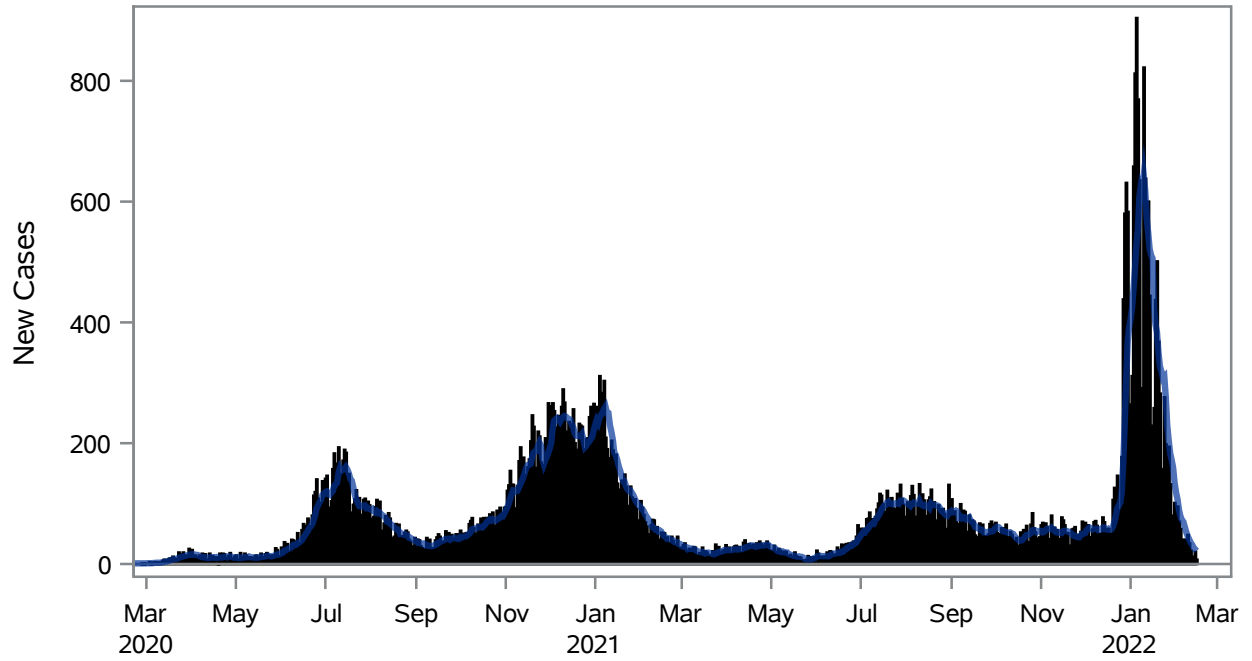


COVID19 Cases for North Las Vegas, 7-Day Moving Average



■ New Cases — 7-Day Moving Average

Investigations are ongoing; data are subject to change.

Reporting through 16FEB2022

North Las Vegas zip codes include 89030, 89031, 89032, 89033, 89036, 89081, 89084, 89085, 89086, 89087.

Table 1: New COVID19 Cases and 7-Day Moving Average in North Las Vegas, Previous Two Weeks

Date (Daily)	New Cases	7-Day Moving Average
03FEB2022	70	89.43
04FEB2022	58	78.86
05FEB2022	38	72.86
06FEB2022	40	69.71
07FEB2022	40	61.00
08FEB2022	26	52.43
09FEB2022	48	45.71
10FEB2022	34	40.57
11FEB2022	22	35.43
12FEB2022	12	31.71
13FEB2022	8	27.14
14FEB2022	20	24.29

Note1: Event Date is calculated as follows based on completed information:

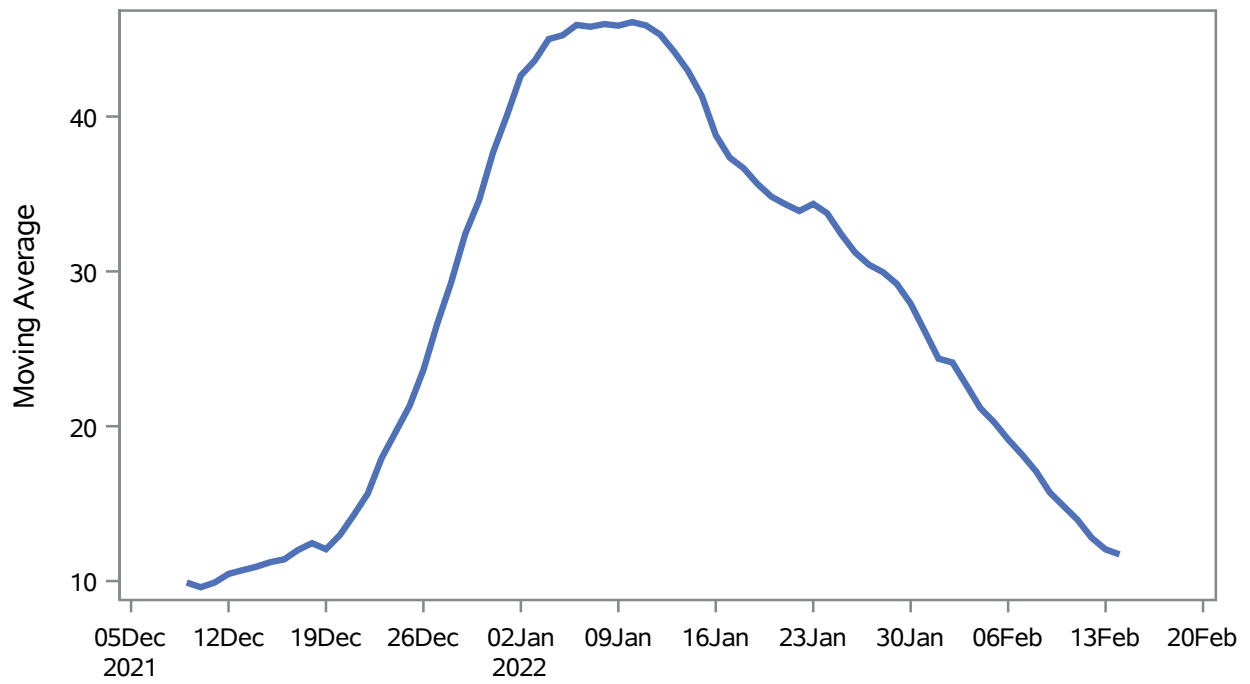
1) Disease onset date 2) Disease diagnosis date 3) Lab result collection date 4) Report date to SNHD.

Investigations are ongoing; data are subject to change.

Reporting through 16FEB2022

North Las Vegas zip codes include 89030, 89031, 89032, 89033, 89036, 89081, 89084, 89085, 89086, 89087.

Percent of People Receiving COVID-19 Viral Tests Who Have Positive Results in North Las Vegas



Investigations are ongoing; data are subject to change.

Reporting through 16FEB2022

North Las Vegas zip codes include 89030, 89031, 89032, 89033, 89036, 89081, 89084, 89085, 89086, 89087.

Table 2: Percent of People Receiving COVID-19 Viral Tests Who Have Positive Results in North Las Vegas

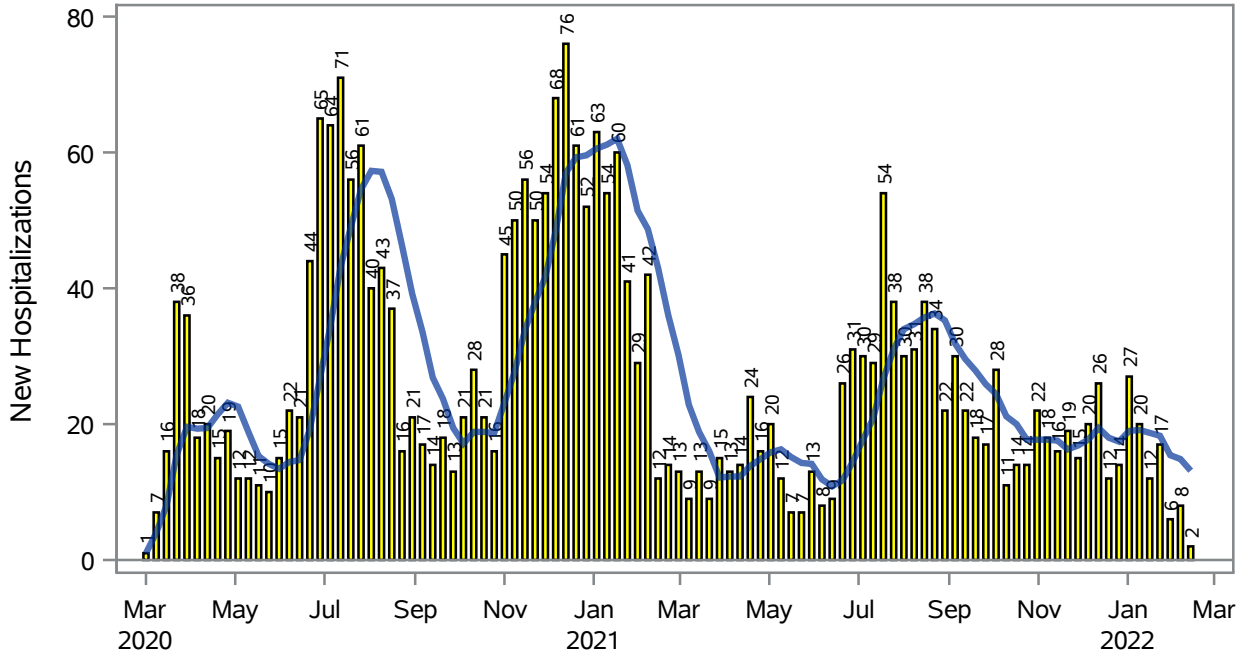
Collection Date	Positive	Negative	Equivocal	Total	% Positivity	7-Day Moving Average
31JAN2022	219	891	1	1122	19.52	26.2
01FEB2022	191	821	1	1023	18.67	24.4
02FEB2022	218	764	1	992	21.98	24.1
03FEB2022	146	735	8	889	16.42	22.7
04FEB2022	118	457	2	577	20.45	21.2
05FEB2022	63	268		331	19.03	20.3
06FEB2022	58	265		323	17.96	19.1
07FEB2022	114	781	6	901	12.65	18.2
08FEB2022	92	727	6	825	11.15	17.1
09FEB2022	105	746	2	853	12.31	15.7
10FEB2022	72	629	3	704	10.23	14.8
11FEB2022	58	348	1	407	14.25	13.9
12FEB2022	31	251		282	10.99	12.8
13FEB2022	28	191	1	220	12.73	12.0
14FEB2022	59	504	5	568	10.39	11.7

Note: Testing Data includes a 3 day delay

**Investigations are ongoing; data are subject to change.
Reporting through 16FEB2022**

North Las Vegas zip codes include 89030, 89031, 89032, 89033, 89036, 89081, 89084, 89085, 89086, 89087.

COVID19 Hospitalizations for North Las Vegas, 7-Day Moving Average



■ New Hospitalizations
 — 7-Day Moving Average

Investigations are ongoing; data are subject to change.

Reporting through 16FEB2022

North Las Vegas zip codes include 89030, 89031, 89032, 89033, 89036, 89081, 89084, 89085, 89086, 89087.

Table 3: New COVID19-Related Hospitalizations and 7-Day Moving Average in North Las Vegas, previous month

Week	Hospitalizations	7-Day Moving Average
23JAN2022	17	18.3
30JAN2022	6	15.4
06FEB2022	8	14.9
13FEB2022	2	13.1

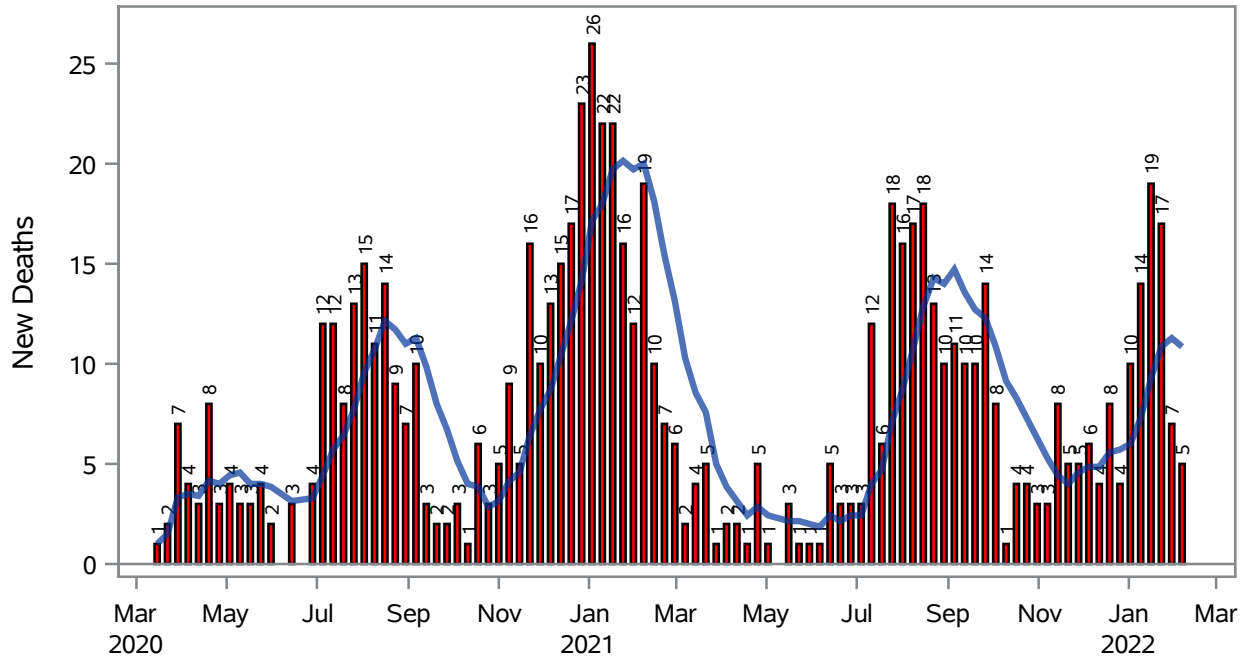
Note1: Admission Date is calculated as follows based on completed information:
A) COVID19 Case is hospitalized B) COVID19 Case has a hospital admission date.

If admission date is missing, then the following is substituted temporarily, in order:
1) Disease onset date 2) Disease diagnosis date 3) Lab result collection date 4) Report date to SNHD.

**Investigations are ongoing; data are subject to change.
Reporting through 16FEB2022**

North Las Vegas zip codes include 89030, 89031, 89032, 89033, 89036, 89081, 89084, 89085, 89086, 89087.

COVID19 Deaths for North Las Vegas, 7-Day Moving Average



■ New Deaths — 7-Day Moving Average

Investigations are ongoing; data are subject to change.

Reporting through 16FEB2022

North Las Vegas zip codes include 89030, 89031, 89032, 89033, 89036, 89081, 89084, 89085, 89086, 89087.

Table 4: New COVID19-Related Deaths and 7-Day Moving Average in North Las Vegas, Previous Month

Week	Deaths	7-Day Moving Average
23JAN2022	17	10.9
30JAN2022	7	11.3
06FEB2022	5	10.9

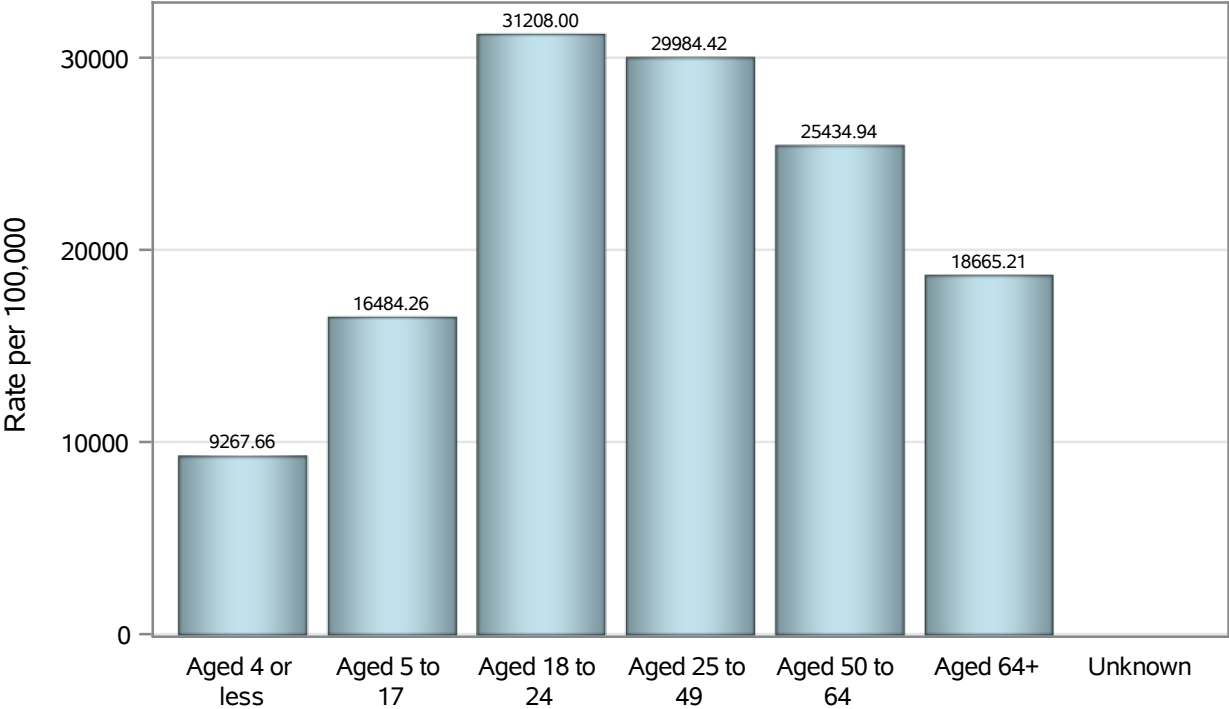
Note1: Date of Death is calculated as follows based on completed information:
A) COVID19 Case is reported as deceased B) COVID19 Case has a reported date of death.

If date of death is missing, then the following is substituted temporarily, in order:
1) Disease onset date 2) Disease diagnosis date
3) Lab result collection date 4) Report date to SNHD.

**Investigations are ongoing; data are subject to change.
Reporting through 16FEB2022**

North Las Vegas zip codes include 89030, 89031, 89032, 89033, 89036, 89081, 89084, 89085, 89086, 89087.

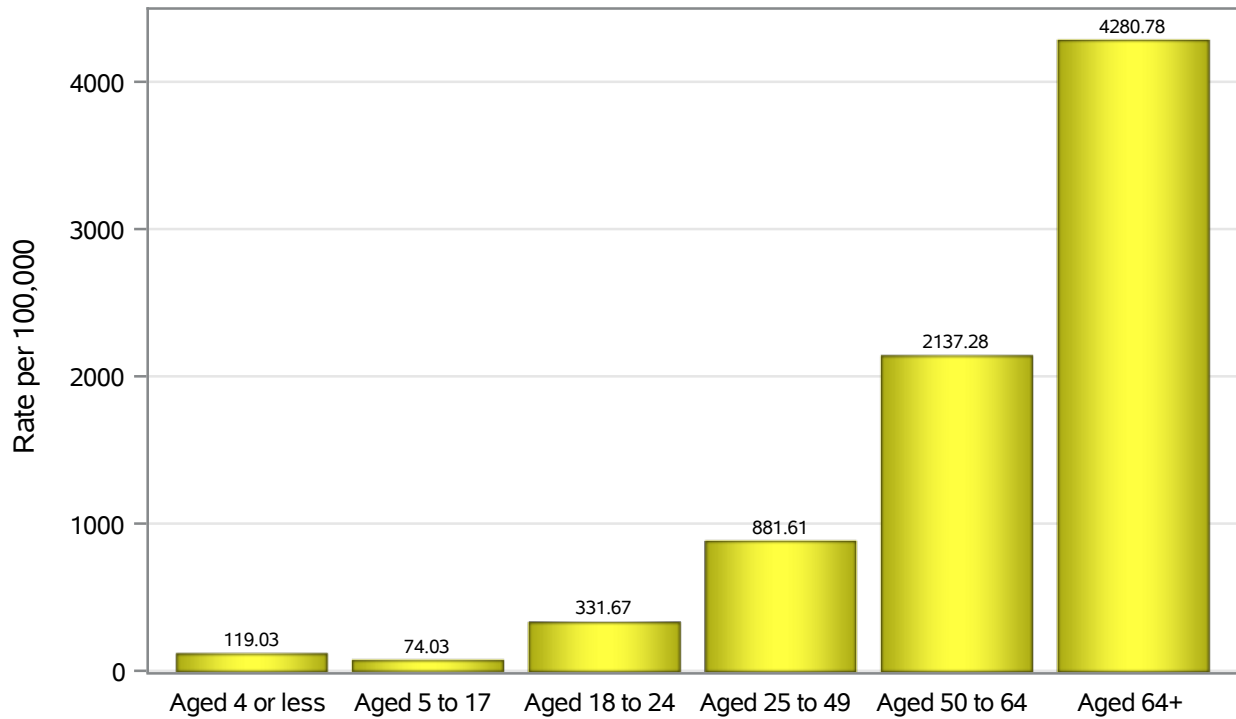
Case Age Rates in North Las Vegas



Investigations are ongoing; data are subject to change.
Reporting through 16FEB2022

North Las Vegas zip codes include 89030, 89031, 89032, 89033, 89036, 89081, 89084, 89085, 89086, 89087.

Hospitalization Age Rates in North Las Vegas

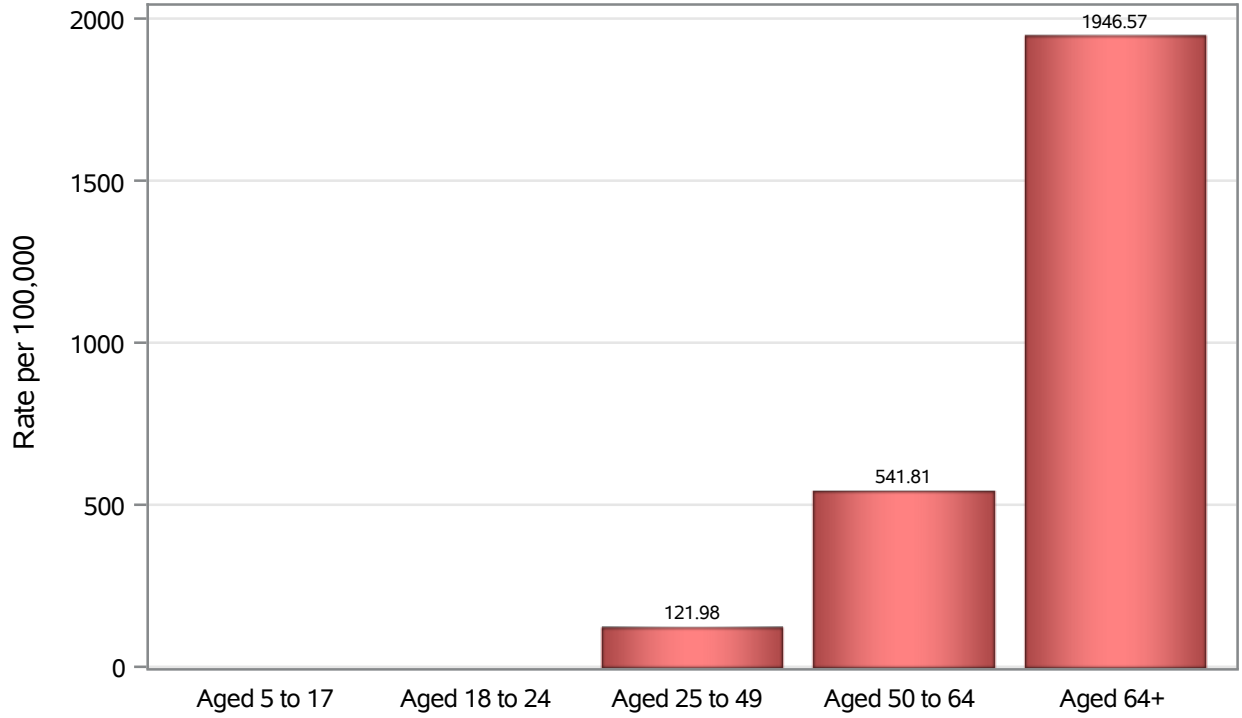


Investigations are ongoing; data are subject to change.

Reporting through 16FEB2022

North Las Vegas zip codes include 89030, 89031, 89032, 89033, 89036, 89081, 89084, 89085, 89086, 89087.

Death Age Rates in North Las Vegas



Investigations are ongoing; data are subject to change.

Reporting through 16FEB2022

North Las Vegas zip codes include 89030, 89031, 89032, 89033, 89036, 89081, 89084, 89085, 89086, 89087.

Table 5: Age and COVID19 in North Las Vegas

Case Status	Age Categories	N	%	Population	Rate per 100,000
Cases	Aged 4 or less	1635	2.9	17,642	9267.7
	Aged 5 to 17	8239	14.8	49,981	16484
	Aged 18 to 24	7151	12.9	22,914	31208
	Aged 25 to 49	24828	44.6	82,803	29984
	Aged 50 to 64	9342	16.8	36,729	25435
	Aged 64+	4430	8.0	23,734	18665
	Unknown	6	0.0	.	.
Hospitalizations	Aged 4 or less	21	0.8	17,642	119.03
	Aged 5 to 17	37	1.4	49,981	74.03
	Aged 18 to 24	76	2.9	22,914	331.67
	Aged 25 to 49	730	27.4	82,803	881.61
	Aged 50 to 64	785	29.5	36,729	2137.3
	Aged 64+	1016	38.1	23,734	4280.8
Deaths	Aged 5 to 17	1	0.1	49,981	.
	Aged 18 to 24	2	0.3	22,914	.
	Aged 25 to 49	101	13.2	82,803	121.98
	Aged 50 to 64	199	26.0	36,729	541.81
	Aged 64+	462	60.4	23,734	1946.6

Note1: Population data source for calculating rate estimates: U.S. Census Bureau, ACS 5-year estimate.

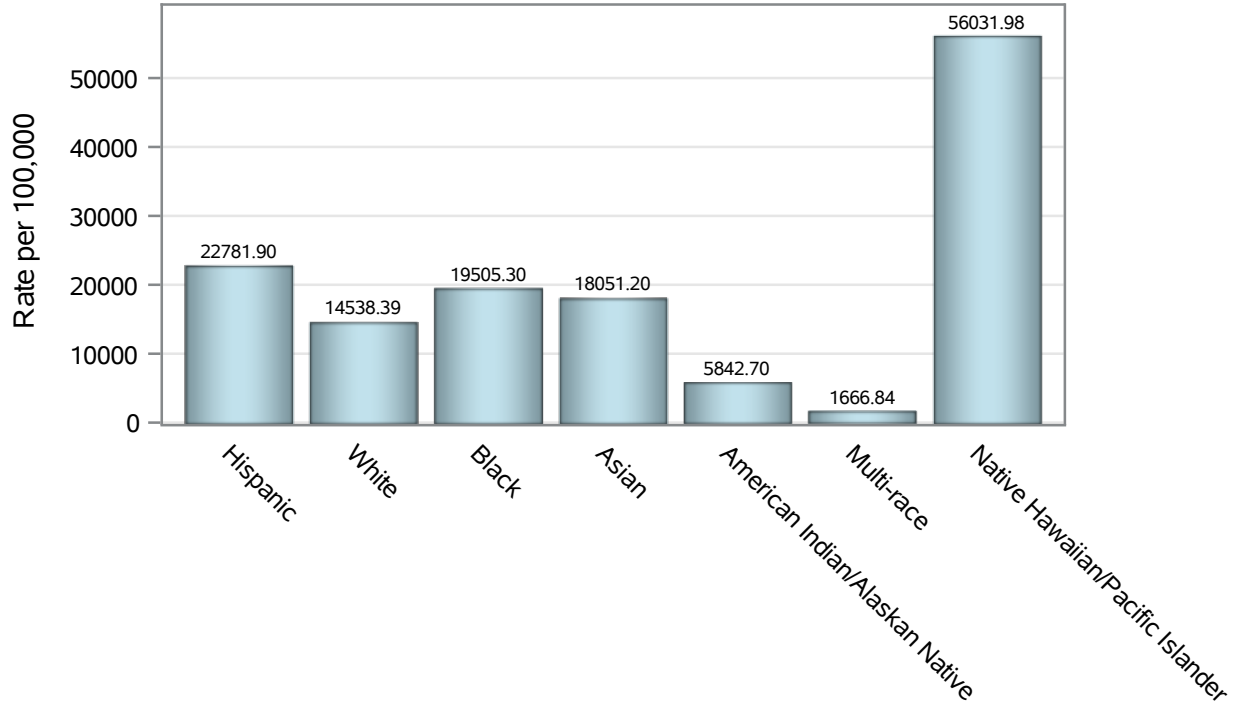
Note2: Rates for categories with fewer than 12 cases are suppressed due to high relative standard error.

Note3: Hospitalizations are regardless of deceased status; Deaths are regardless of hospitalization status

**Investigations are ongoing; data are subject to change.
Reporting through 16FEB2022**

North Las Vegas zip codes include 89030, 89031, 89032, 89033, 89036, 89081, 89084, 89085, 89086, 89087.

Case Race/Ethnicity Rates in North Las Vegas

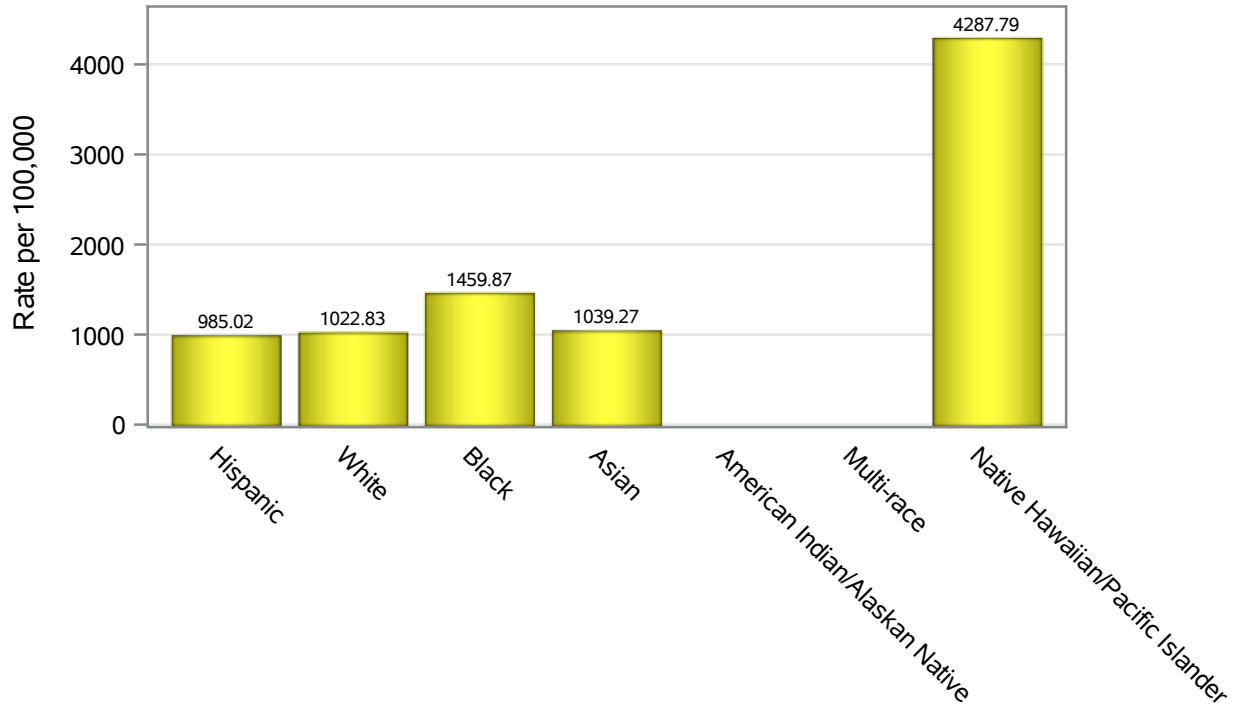


Investigations are ongoing; data are subject to change.

Reporting through 16FEB2022

North Las Vegas zip codes include 89030, 89031, 89032, 89033, 89036, 89081, 89084, 89085, 89086, 89087.

Hospitalization Race/Ethnicity Rates in North Las Vegas

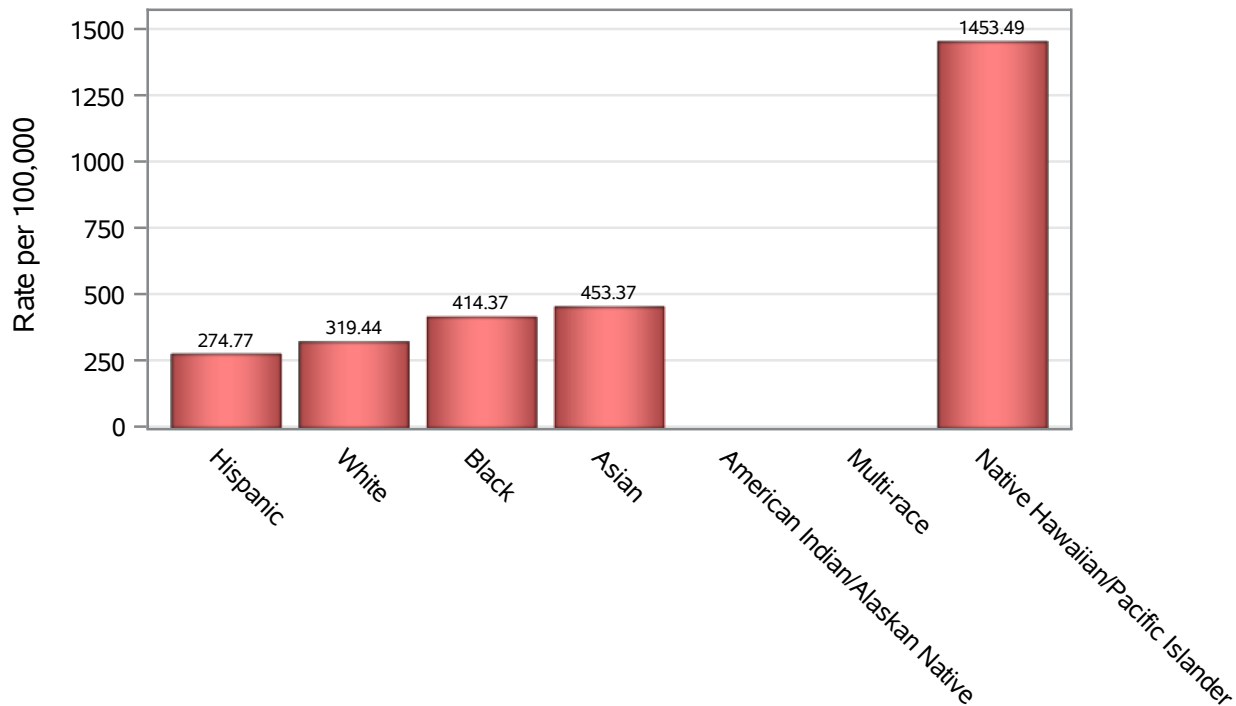


Investigations are ongoing; data are subject to change.

Reporting through 16FEB2022

North Las Vegas zip codes include 89030, 89031, 89032, 89033, 89036, 89081, 89084, 89085, 89086, 89087.

Death Race/Ethnicity Rates in North Las Vegas



Investigations are ongoing; data are subject to change.

Reporting through 16FEB2022

North Las Vegas zip codes include 89030, 89031, 89032, 89033, 89036, 89081, 89084, 89085, 89086, 89087.

Table 6: Race/Ethnicity and COVID19 in North Las Vegas

Case Status	Race Ethnicity Categories	N	%	Population	Rate per 100,000
Cases	Hispanic	21972	39.5	96,445	22782
	White	9239	16.6	63,549	14538
	Black	9179	16.5	47,059	19505
	Asian	2588	4.7	14,337	18051
	American Indian/Alaskan Native	52	0.1	890	5842.7
	Multi-race	162	0.3	9,719	1666.8
	Native Hawaiian/Pacific Islander	771	1.4	1,376	56032
	Unknown	11668	21.0	.	.
Hospitalizations	Hispanic	950	35.6	96,445	985.02
	White	650	24.4	63,549	1022.8
	Black	687	25.8	47,059	1459.9
	Asian	149	5.6	14,337	1039.3
	American Indian/Alaskan Native	10	0.4	890	.
	Multi-race	9	0.3	9,719	.
	Native Hawaiian/Pacific Islander	59	2.2	1,376	4287.8
	Unknown	151	5.7	.	.
Deaths	Hispanic	265	34.6	96,445	274.77
	White	203	26.5	63,549	319.44
	Black	195	25.5	47,059	414.37
	Asian	65	8.5	14,337	453.37
	American Indian/Alaskan Native	5	0.7	890	.
	Multi-race	5	0.7	9,719	.
	Native Hawaiian/Pacific Islander	20	2.6	1,376	1453.5
	Unknown	7	0.9	.	.

Note1: Population data source for calculating rate estimates: U.S. Census Bureau, ACS 5-year estimate.

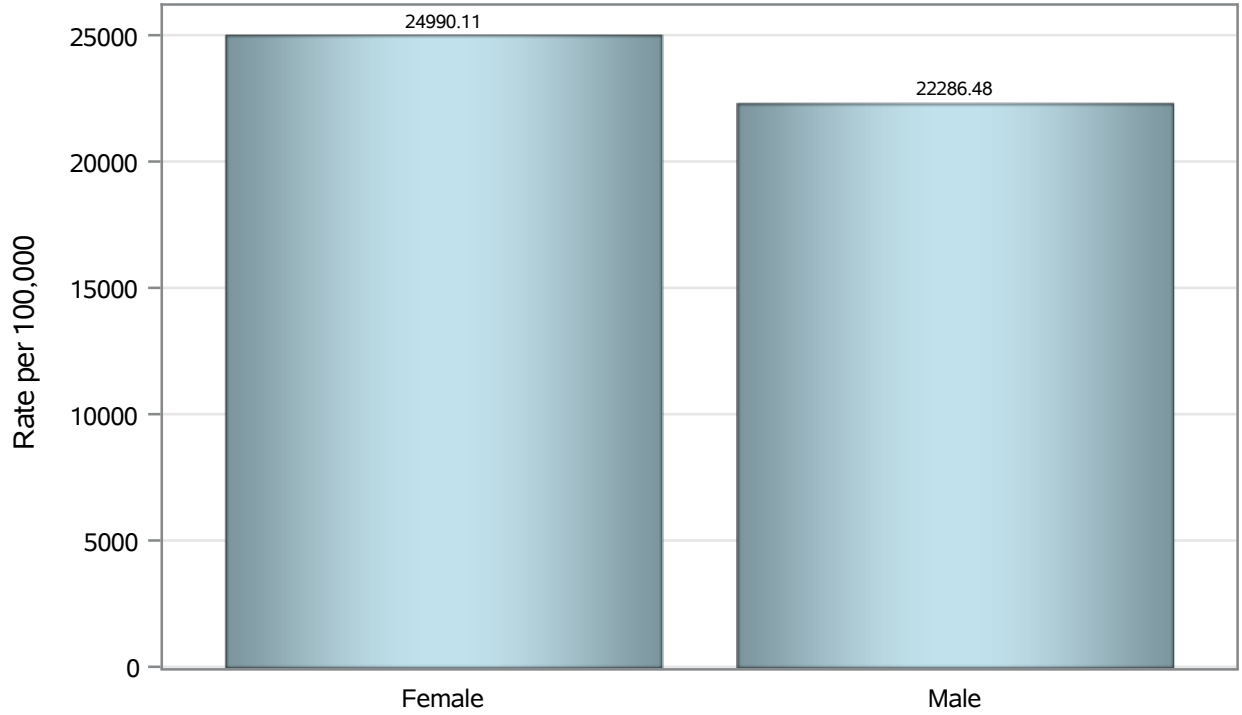
Note2: Rates for categories with fewer than 12 cases are suppressed due to high relative standard error.

Note3: Hospitalizations are regardless of deceased status; Deaths are regardless of hospitalization status

**Investigations are ongoing; data are subject to change.
Reporting through 16FEB2022**

North Las Vegas zip codes include 89030, 89031, 89032, 89033, 89036, 89081, 89084, 89085, 89086, 89087.

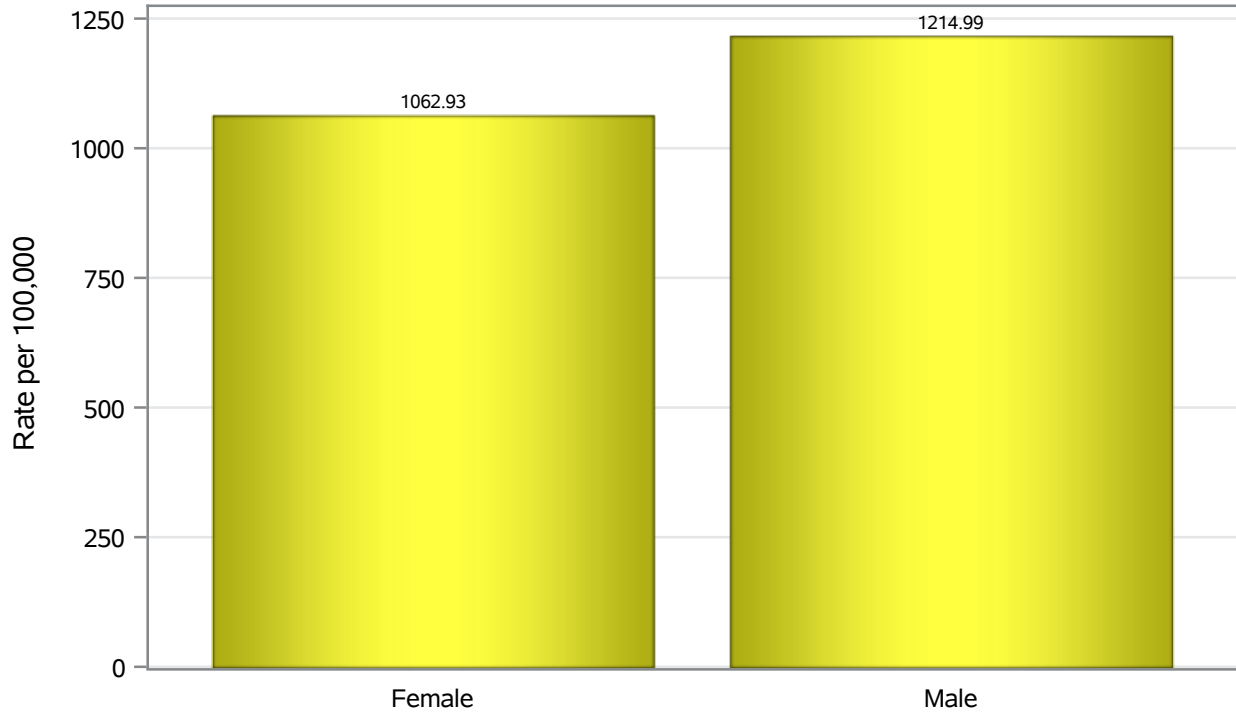
Case Birth Sex Rates in North Las Vegas



Investigations are ongoing; data are subject to change.
Reporting through 16FEB2022

North Las Vegas zip codes include 89030, 89031, 89032, 89033, 89036, 89081, 89084,
89085, 89086, 89087.

Hospitalization Birth Sex Rates in North Las Vegas

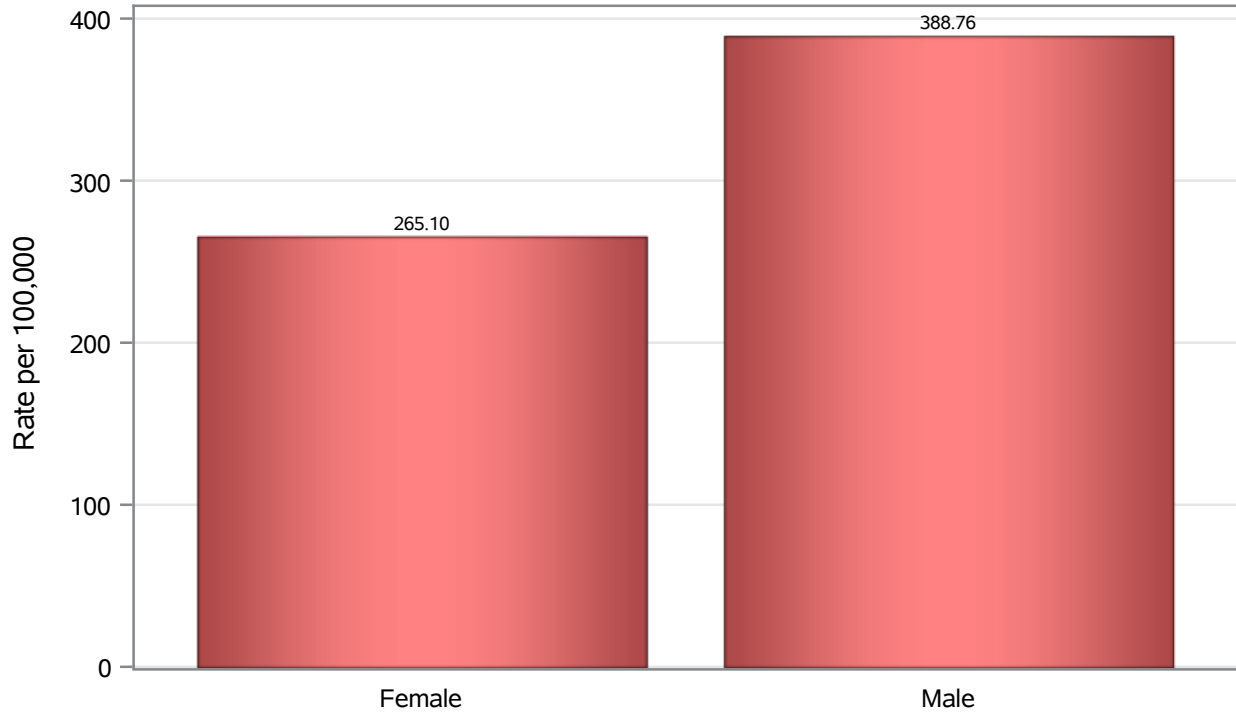


Investigations are ongoing; data are subject to change.

Reporting through 16FEB2022

North Las Vegas zip codes include 89030, 89031, 89032, 89033, 89036, 89081, 89084, 89085, 89086, 89087.

Death Birth Sex Rates in North Las Vegas



Investigations are ongoing; data are subject to change.

Reporting through 16FEB2022

North Las Vegas zip codes include 89030, 89031, 89032, 89033, 89036, 89081, 89084, 89085, 89086, 89087.

Table 7: Birth Sex and COVID19 in North Las Vegas

Case Status	Birth Sex Categories	N	%	Population	Rate per 100,000
Cases	Female	29694	53.4	118823	24990
	Male	25625	46.1	114980	22286
	Unknown	312	0.6	.	.
Hospitalizations	Female	1263	47.4	118823	1062.9
	Male	1397	52.4	114980	1215.0
	Unknown	5	0.2	.	.
Deaths	Female	315	41.2	118823	265.10
	Male	447	58.4	114980	388.76
	Unknown	3	0.4	.	.

Note1: Population data source for calculating rate estimates: U.S. Census Bureau, ACS 5-year estimate.

Note2: Rates for categories with fewer than 12 cases are suppressed due to high relative standard error.

Note3: Hospitalizations are regardless of deceased status; Deaths are regardless of hospitalization status

**Investigations are ongoing; data are subject to change.
Reporting through 16FEB2022**

North Las Vegas zip codes include 89030, 89031, 89032, 89033, 89036, 89081, 89084, 89085, 89086, 89087.