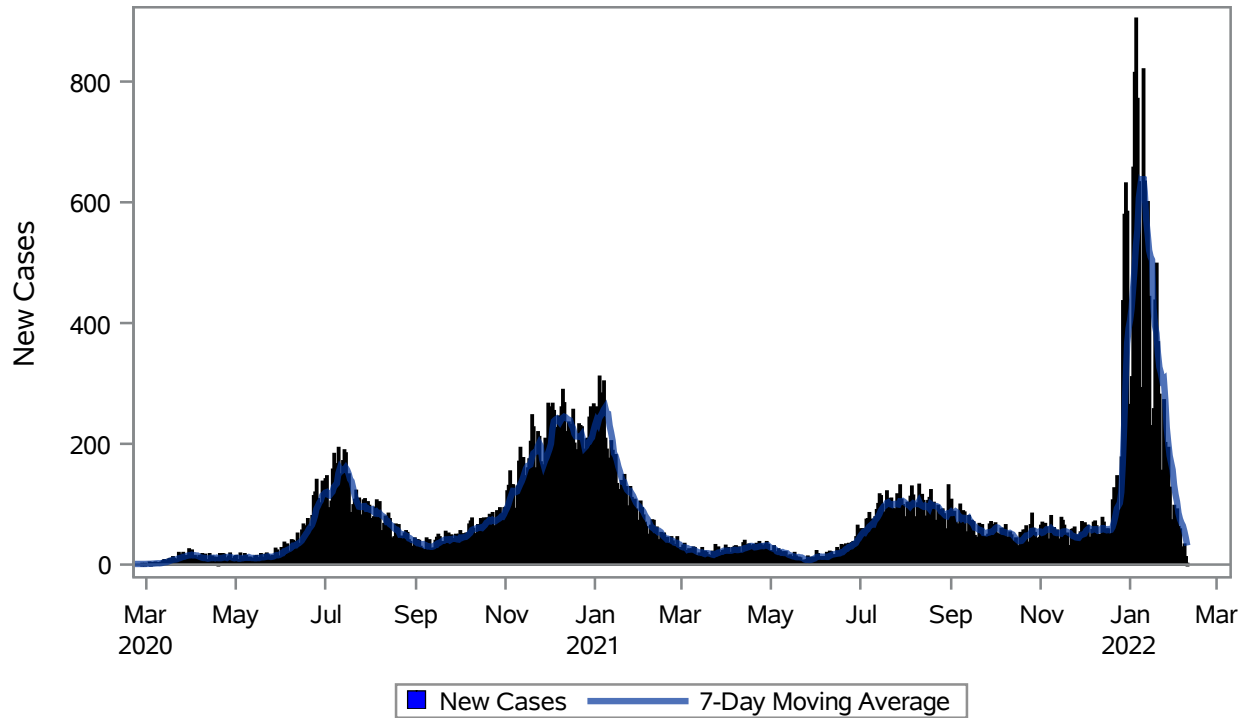


### COVID19 Cases for North Las Vegas, 7-Day Moving Average



Investigations are ongoing; data are subject to change.

Reporting through 09FEB2022

North Las Vegas zip codes include 89030, 89031, 89032, 89033, 89036, 89081, 89084, 89085, 89086, 89087.

**Table 1: New COVID19 Cases and 7-Day Moving Average in North Las Vegas, Previous Two Weeks**

Date (Daily)	New Cases	7-Day Moving Average
27JAN2022	193	202.29
28JAN2022	127	180.29
29JAN2022	73	168.57
30JAN2022	60	157.14
31JAN2022	97	132.14
01FEB2022	88	116.00
02FEB2022	91	104.14
03FEB2022	62	85.43
04FEB2022	58	75.57
05FEB2022	28	69.14
06FEB2022	27	64.43
07FEB2022	33	55.29

---

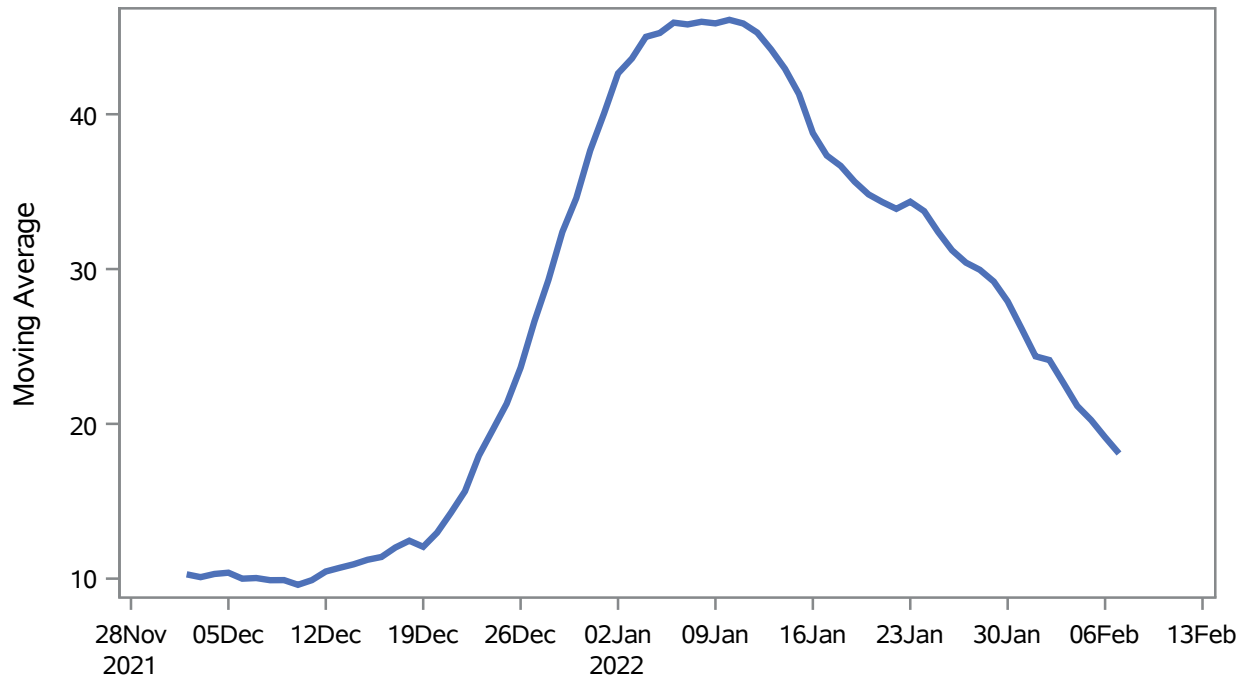
Note1: Event Date is calculated as follows based on completed information:  
1) Disease onset date 2) Disease diagnosis date 3) Lab result collection date 4) Report date to SNHD.

---

**Investigations are ongoing; data are subject to change.  
Reporting through 09FEB2022**

**North Las Vegas zip codes include 89030, 89031, 89032, 89033, 89036, 89081, 89084, 89085, 89086, 89087.**

### Percent of People Receiving COVID-19 Viral Tests Who Have Positive Results in North Las Vegas



Investigations are ongoing; data are subject to change.

Reporting through 09FEB2022

North Las Vegas zip codes include 89030, 89031, 89032, 89033, 89036, 89081, 89084, 89085, 89086, 89087.

**Table 2: Percent of People Receiving COVID-19 Viral Tests Who Have Positive Results in North Las Vegas**

Collection Date	Positive	Negative	Equivocal	Total	% Positivity	7-Day Moving Average
24JAN2022	572	1205	2	1797	31.83	33.7
25JAN2022	413	890	2	1324	31.19	32.4
26JAN2022	374	1176	3	1580	23.67	31.2
27JAN2022	358	967	1	1343	26.66	30.4
28JAN2022	267	593	6	866	30.83	30.0
29JAN2022	118	344	1	463	25.49	29.2
30JAN2022	111	321		432	25.69	27.9
31JAN2022	219	891	1	1122	19.52	26.2
01FEB2022	191	821	1	1023	18.67	24.4
02FEB2022	218	764	1	992	21.98	24.1
03FEB2022	145	732	8	885	16.38	22.7
04FEB2022	117	456	2	575	20.35	21.2
05FEB2022	63	267		330	19.09	20.2
06FEB2022	58	265		323	17.96	19.1
07FEB2022	106	759	6	871	12.17	18.1

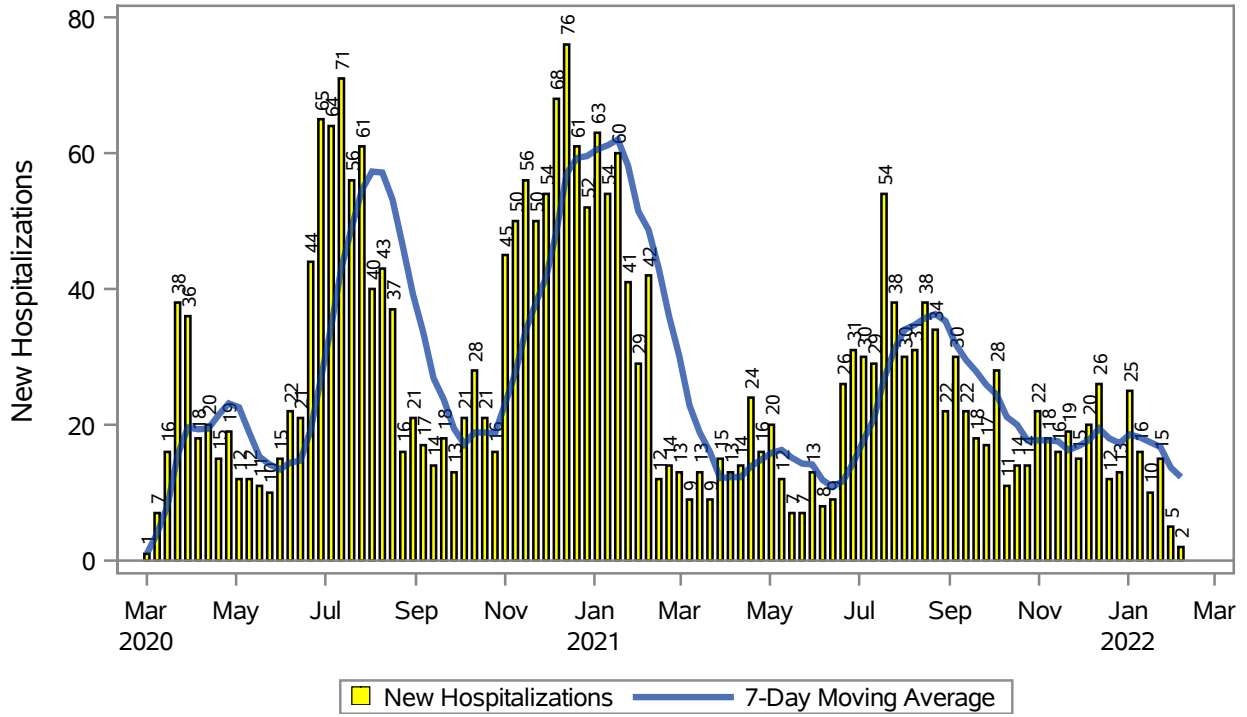
Note: Testing Data includes a 3 day delay

**Investigations are ongoing; data are subject to change.**

**Reporting through 09FEB2022**

**North Las Vegas zip codes include 89030, 89031, 89032, 89033, 89036, 89081, 89084, 89085, 89086, 89087.**

### COVID19 Hospitalizations for North Las Vegas, 7-Day Moving Average



Investigations are ongoing; data are subject to change.

Reporting through 09FEB2022

North Las Vegas zip codes include 89030, 89031, 89032, 89033, 89036, 89081, 89084, 89085, 89086, 89087.

**Table 3: New COVID19-Related Hospitalizations and 7-Day Moving Average in North Las Vegas, previous month**

Week	Hospitalizations	7-Day Moving Average
16JAN2022	10	17.4
23JAN2022	15	16.7
30JAN2022	5	13.7
06FEB2022	2	12.3

---

Note1: Admission Date is calculated as follows based on completed information:  
A) COVID19 Case is hospitalized B) COVID19 Case has a hospital admission date.

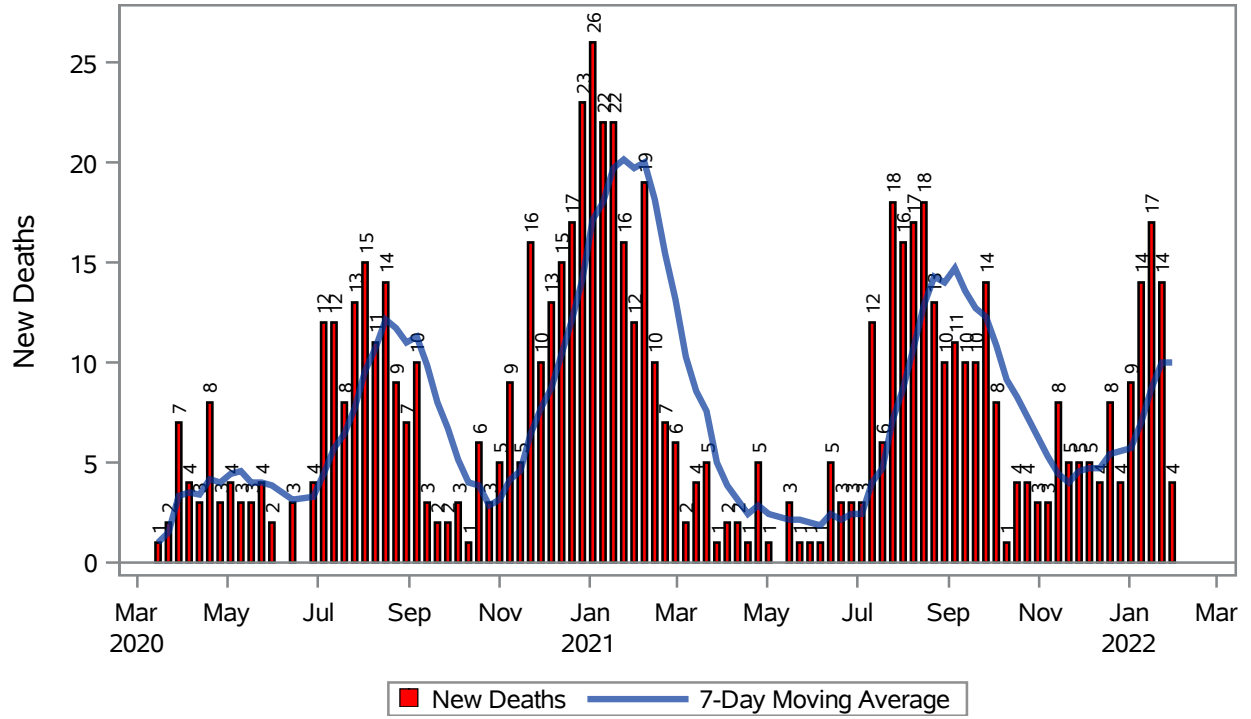
If admission date is missing, then the following is substituted temporarily, in order:  
1) Disease onset date 2) Disease diagnosis date 3) Lab result collection date 4) Report date to SNHD.

---

**Investigations are ongoing; data are subject to change.  
Reporting through 09FEB2022**

**North Las Vegas zip codes include 89030, 89031, 89032, 89033, 89036, 89081, 89084, 89085, 89086, 89087.**

### COVID19 Deaths for North Las Vegas, 7-Day Moving Average



Investigations are ongoing; data are subject to change.

Reporting through 09FEB2022

North Las Vegas zip codes include 89030, 89031, 89032, 89033, 89036, 89081, 89084, 89085, 89086, 89087.

**Table 4: New COVID19-Related Deaths and 7-Day Moving Average in North Las Vegas, Previous Month**

Week	Deaths	7-Day Moving Average
16JAN2022	17	8.71
23JAN2022	14	10.0
30JAN2022	4	10.0

---

Note1: Date of Death is calculated as follows based on completed information:  
A) COVID19 Case is reported as deceased B) COVID19 Case has a reported date of death.

If date of death is missing, then the following is substituted temporarily, in order:  
1) Disease onset date 2) Disease diagnosis date  
3) Lab result collection date 4) Report date to SNHD.

---

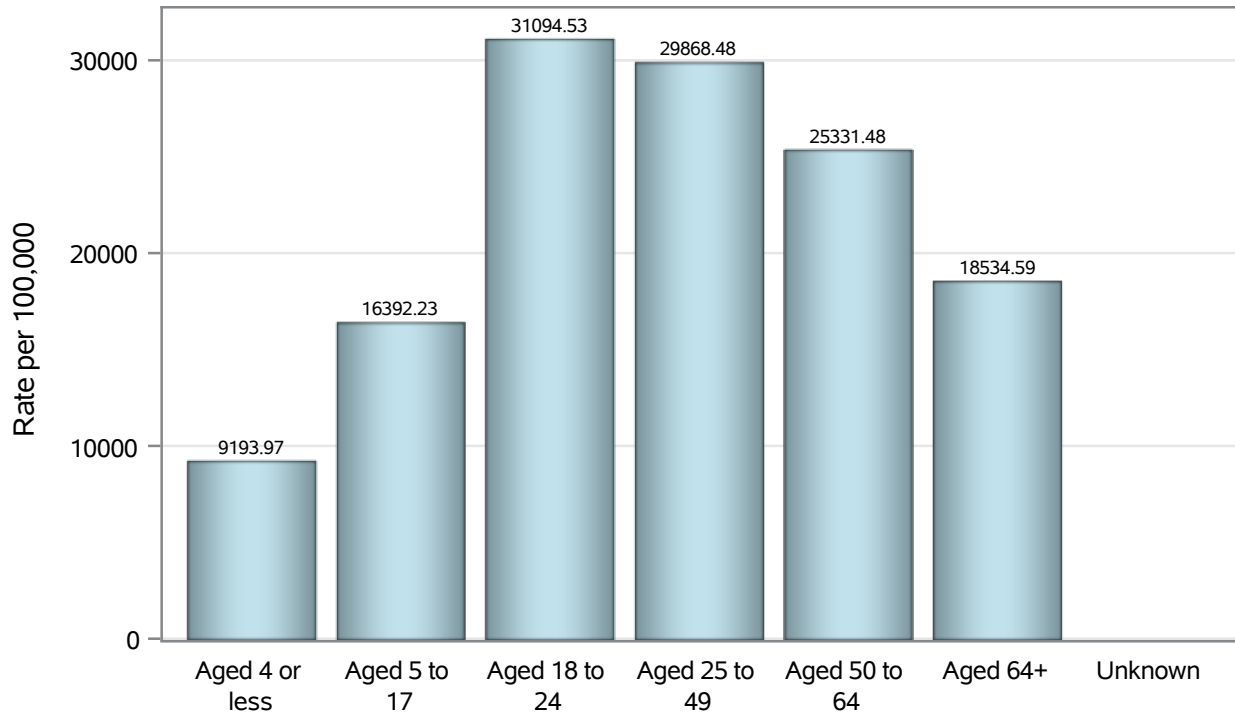
**Investigations are ongoing; data are subject to change.**

**Reporting through 09FEB2022**

**North Las Vegas zip codes include 89030, 89031, 89032, 89033, 89036, 89081, 89084, 89085, 89086, 89087.**



### Case Age Rates in North Las Vegas

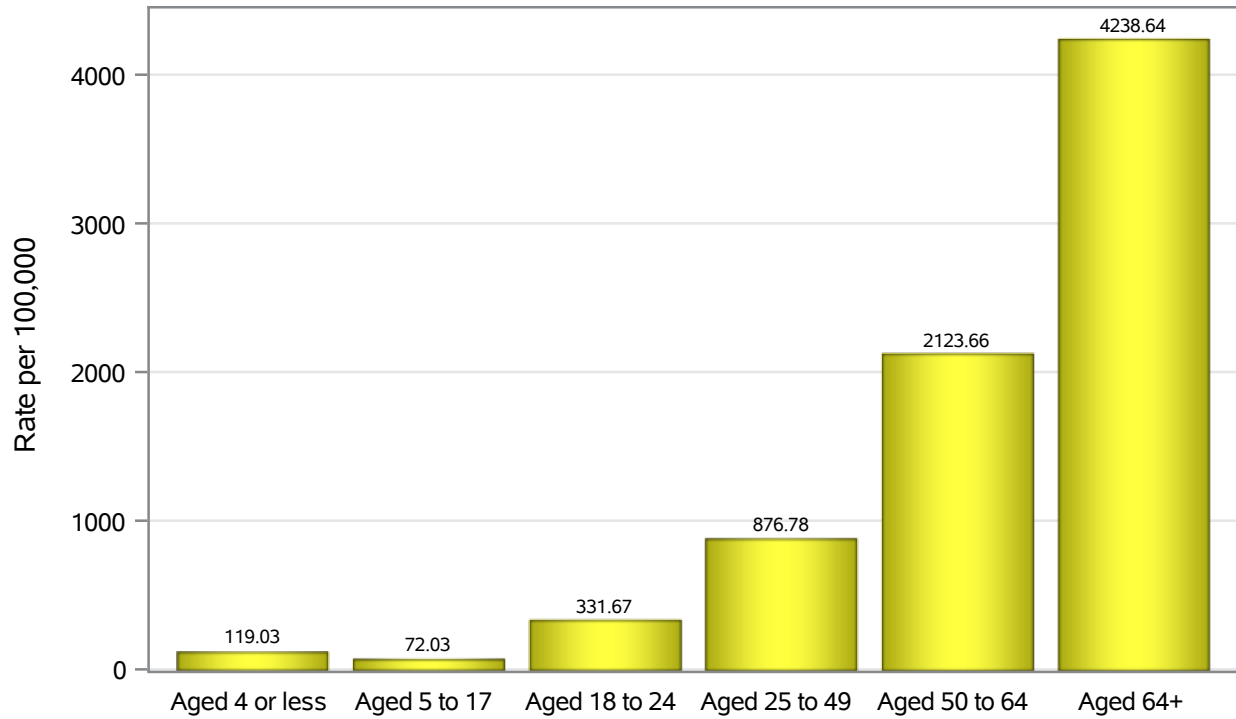


Investigations are ongoing; data are subject to change.

Reporting through 09FEB2022

North Las Vegas zip codes include 89030, 89031, 89032, 89033, 89036, 89081, 89084, 89085, 89086, 89087.

### Hospitalization Age Rates in North Las Vegas

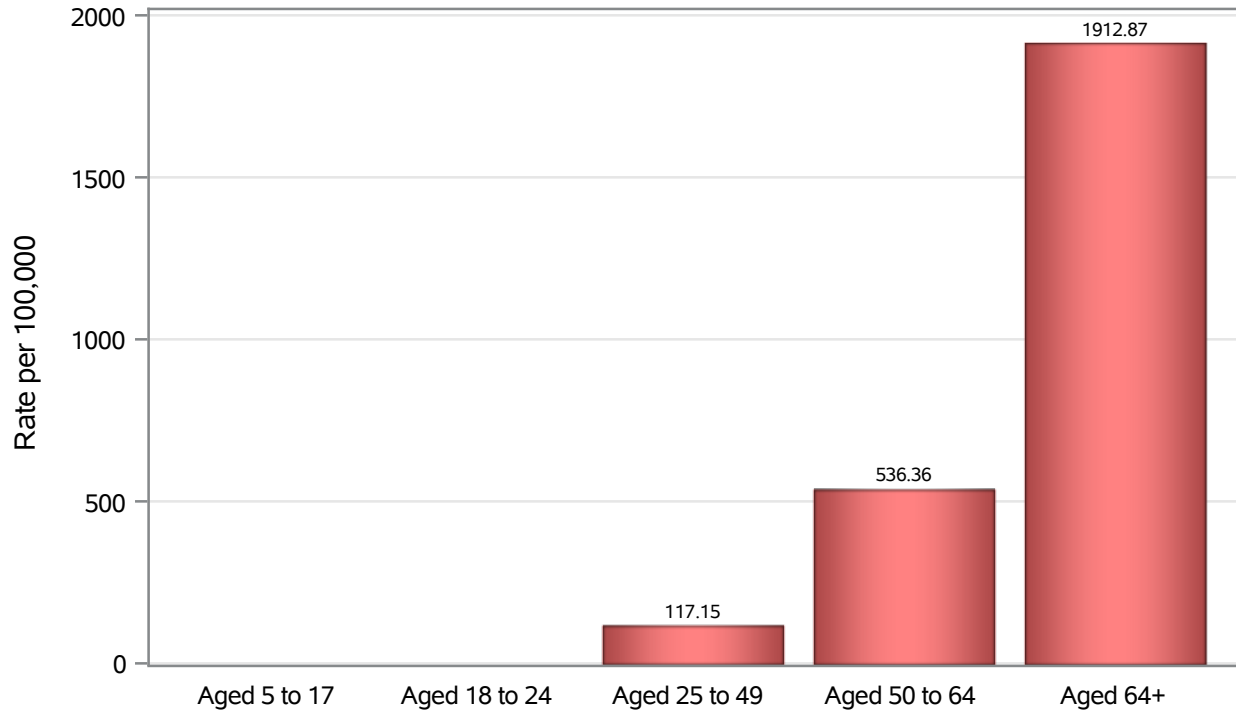


Investigations are ongoing; data are subject to change.

Reporting through 09FEB2022

North Las Vegas zip codes include 89030, 89031, 89032, 89033, 89036, 89081, 89084, 89085, 89086, 89087.

### Death Age Rates in North Las Vegas



Investigations are ongoing; data are subject to change.

Reporting through 09FEB2022

North Las Vegas zip codes include 89030, 89031, 89032, 89033, 89036, 89081, 89084, 89085, 89086, 89087.

**Table 5: Age and COVID19 in North Las Vegas**

Case Status	Age Categories	N	%	Population	Rate per 100,000
Cases	Aged 4 or less	1622	2.9	17,642	9194.0
	Aged 5 to 17	8193	14.8	49,981	16392
	Aged 18 to 24	7125	12.9	22,914	31095
	Aged 25 to 49	24732	44.7	82,803	29868
	Aged 50 to 64	9304	16.8	36,729	25331
	Aged 64+	4399	7.9	23,734	18535
	Unknown	6	0.0	.	.
Hospitalizations	Aged 4 or less	21	0.8	17,642	119.03
	Aged 5 to 17	36	1.4	49,981	72.03
	Aged 18 to 24	76	2.9	22,914	331.67
	Aged 25 to 49	726	27.4	82,803	876.78
	Aged 50 to 64	780	29.5	36,729	2123.7
	Aged 64+	1006	38.0	23,734	4238.6
	Deaths	Aged 5 to 17	1	0.1	49,981
Aged 18 to 24		1	0.1	22,914	.
Aged 25 to 49		97	12.9	82,803	117.15
Aged 50 to 64		197	26.3	36,729	536.36
Aged 64+		454	60.5	23,734	1912.9

Note1: Population data source for calculating rate estimates: U.S. Census Bureau, ACS 5-year estimate.

Note2: Rates for categories with fewer than 12 cases are suppressed due to high relative standard error.

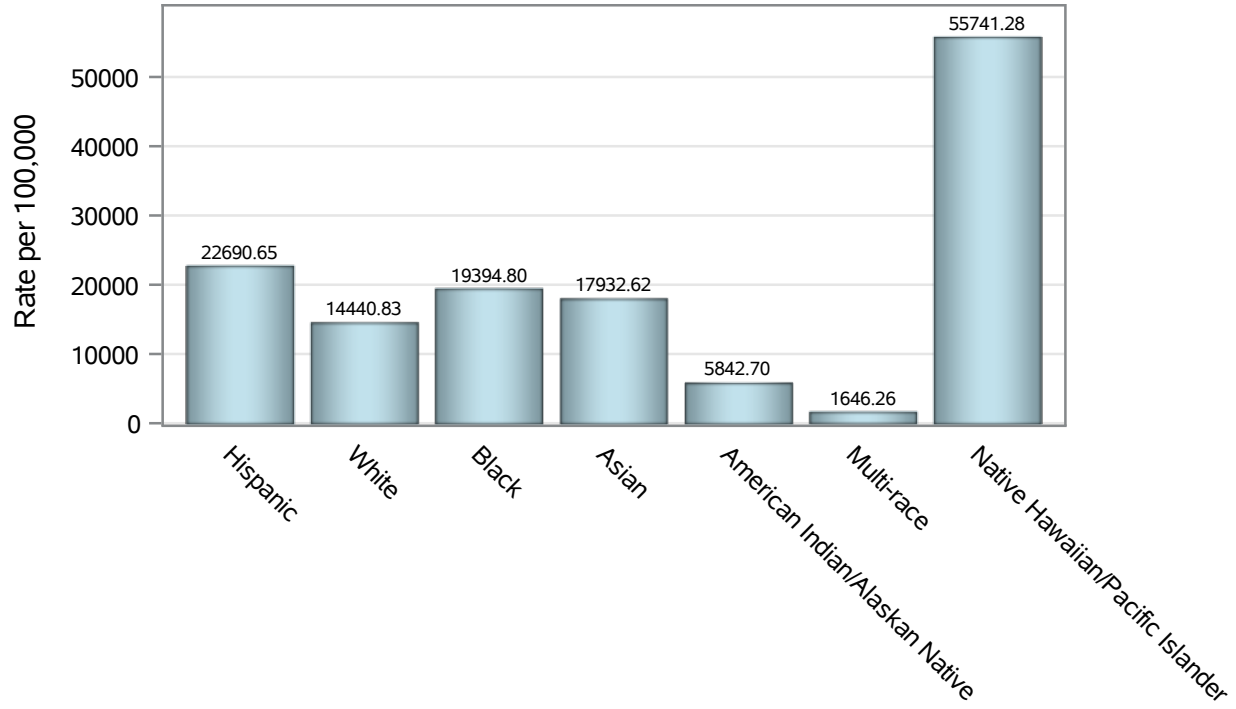
Note3: Hospitalizations are regardless of deceased status; Deaths are regardless of hospitalization status

**Investigations are ongoing; data are subject to change.**

**Reporting through 09FEB2022**

**North Las Vegas zip codes include 89030, 89031, 89032, 89033, 89036, 89081, 89084, 89085, 89086, 89087.**

### Case Race/Ethnicity Rates in North Las Vegas

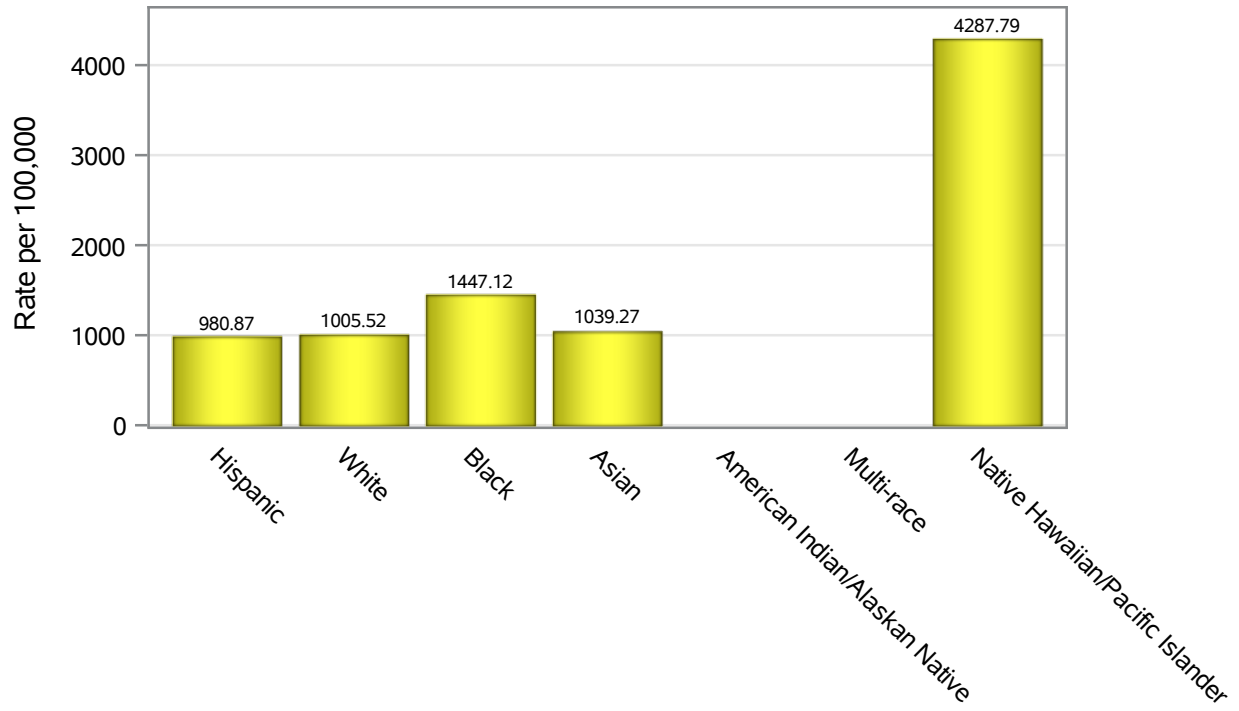


Investigations are ongoing; data are subject to change.

Reporting through 09FEB2022

North Las Vegas zip codes include 89030, 89031, 89032, 89033, 89036, 89081, 89084, 89085, 89086, 89087.

### Hospitalization Race/Ethnicity Rates in North Las Vegas

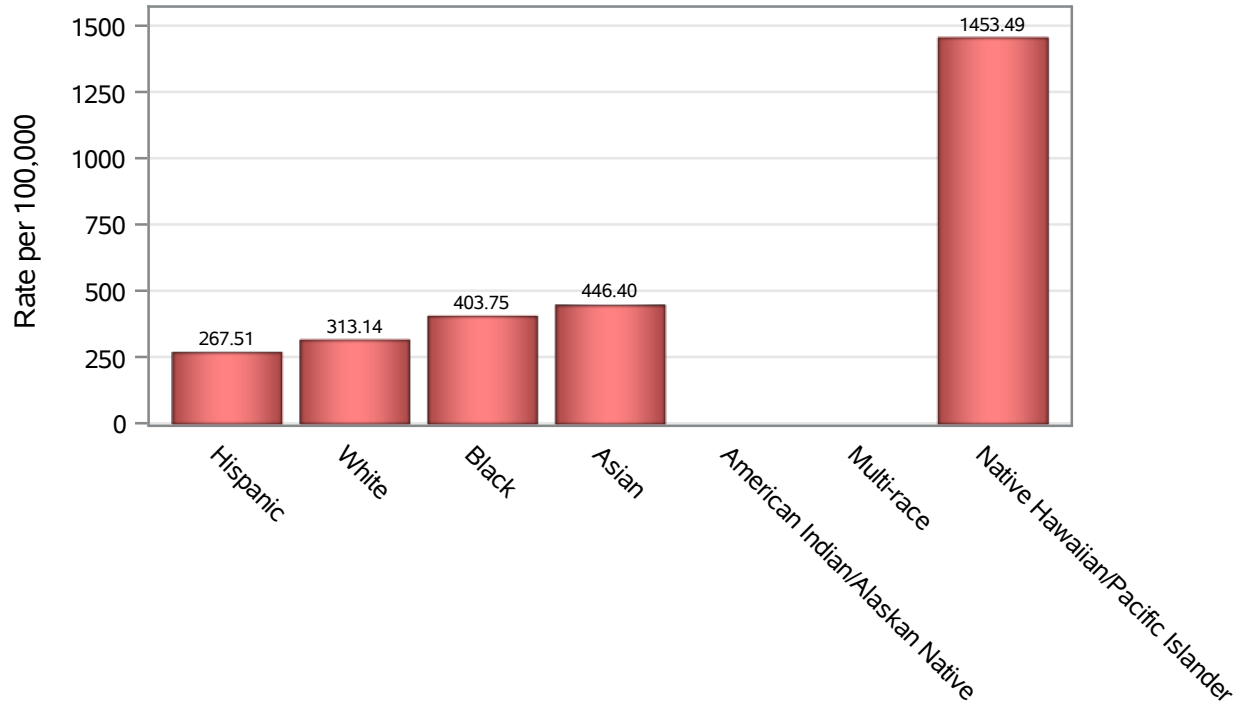


Investigations are ongoing; data are subject to change.

Reporting through 09FEB2022

North Las Vegas zip codes include 89030, 89031, 89032, 89033, 89036, 89081, 89084, 89085, 89086, 89087.

### Death Race/Ethnicity Rates in North Las Vegas



Investigations are ongoing; data are subject to change.

Reporting through 09FEB2022

North Las Vegas zip codes include 89030, 89031, 89032, 89033, 89036, 89081, 89084, 89085, 89086, 89087.

**Table 6: Race/Ethnicity and COVID19 in North Las Vegas**

Case Status	Race Ethnicity Categories	N	%	Population	Rate per 100,000
Cases	Hispanic	21884	39.5	96,445	22691
	White	9177	16.6	63,549	14441
	Black	9127	16.5	47,059	19395
	Asian	2571	4.6	14,337	17933
	American Indian/Alaskan Native	52	0.1	890	5842.7
	Multi-race	160	0.3	9,719	1646.3
	Native Hawaiian/Pacific Islander	767	1.4	1,376	55741
	Unknown	11643	21.0	.	.
Hospitalizations	Hispanic	946	35.8	96,445	980.87
	White	639	24.2	63,549	1005.5
	Black	681	25.7	47,059	1447.1
	Asian	149	5.6	14,337	1039.3
	American Indian/Alaskan Native	10	0.4	890	.
	Multi-race	9	0.3	9,719	.
	Native Hawaiian/Pacific Islander	59	2.2	1,376	4287.8
	Unknown	152	5.7	.	.
Deaths	Hispanic	258	34.4	96,445	267.51
	White	199	26.5	63,549	313.14
	Black	190	25.3	47,059	403.75
	Asian	64	8.5	14,337	446.40
	American Indian/Alaskan Native	5	0.7	890	.
	Multi-race	5	0.7	9,719	.
	Native Hawaiian/Pacific Islander	20	2.7	1,376	1453.5
	Unknown	9	1.2	.	.

Note1: Population data source for calculating rate estimates: U.S. Census Bureau, ACS 5-year estimate.

Note2: Rates for categories with fewer than 12 cases are suppressed due to high relative standard error.

Note3: Hospitalizations are regardless of deceased status; Deaths are regardless of hospitalization status

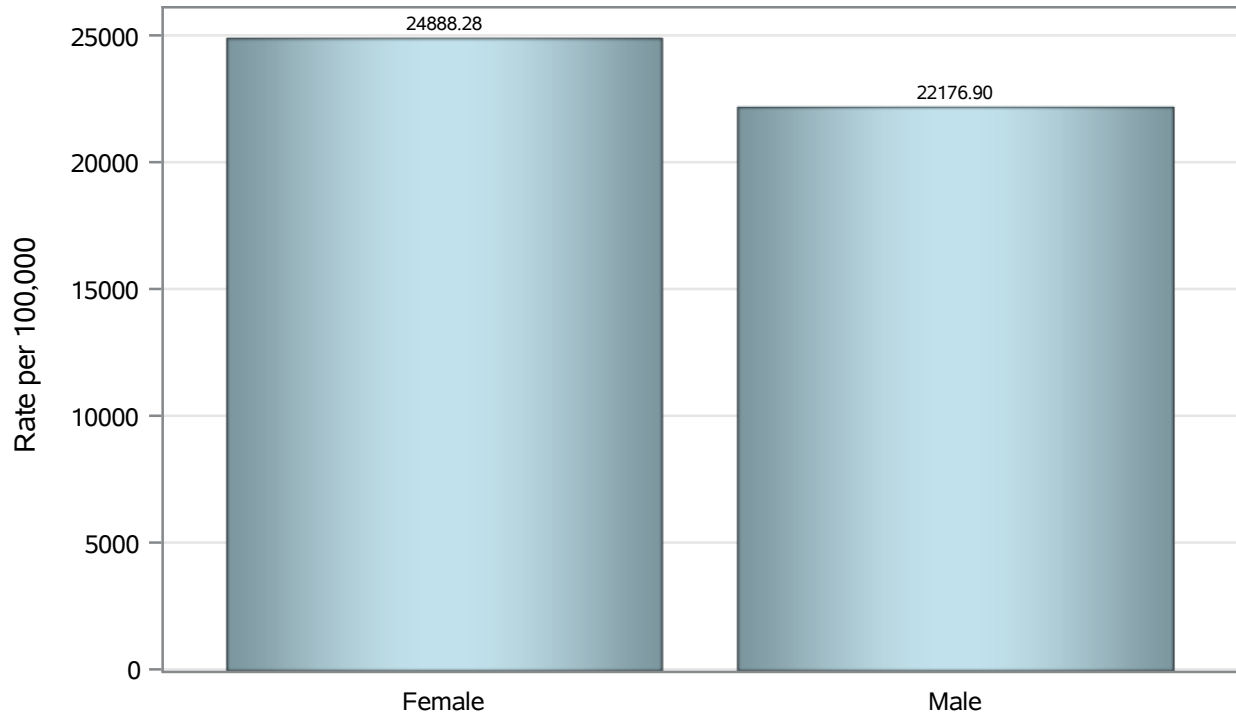
**Investigations are ongoing; data are subject to change.**

**Reporting through 09FEB2022**

**North Las Vegas zip codes include 89030, 89031, 89032, 89033, 89036, 89081, 89084, 89085, 89086, 89087.**



### Case Birth Sex Rates in North Las Vegas

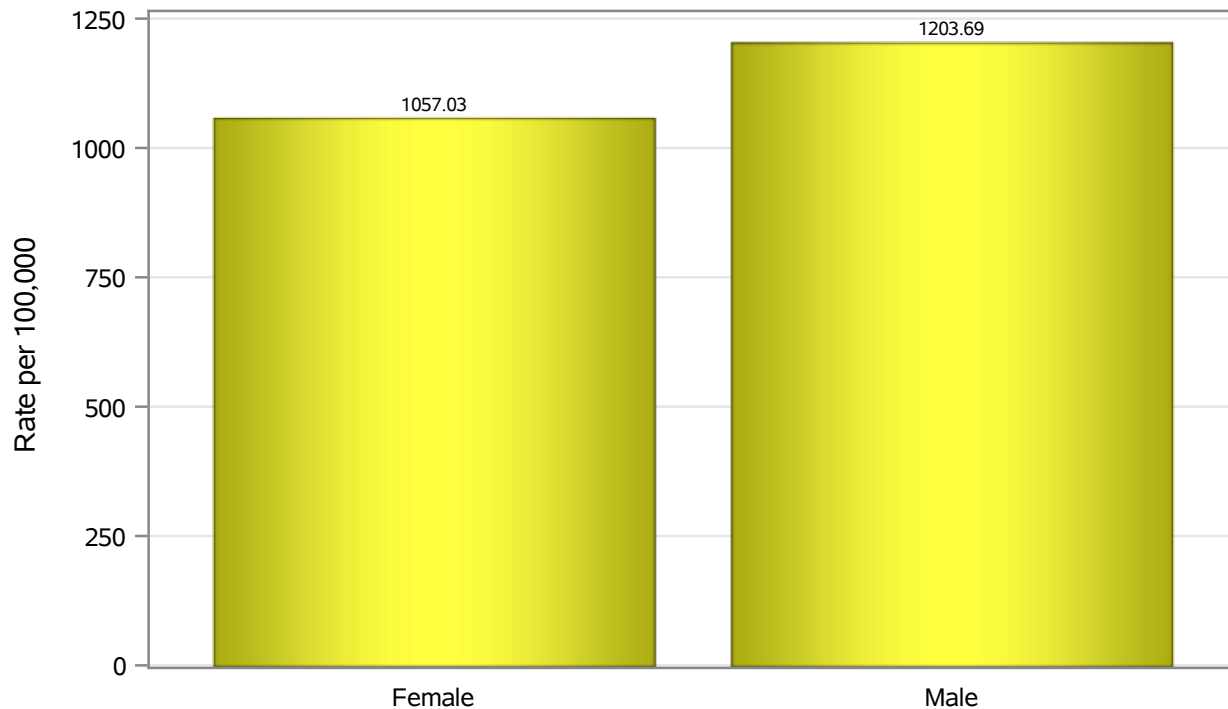


Investigations are ongoing; data are subject to change.

Reporting through 09FEB2022

North Las Vegas zip codes include 89030, 89031, 89032, 89033, 89036, 89081, 89084, 89085, 89086, 89087.

### Hospitalization Birth Sex Rates in North Las Vegas

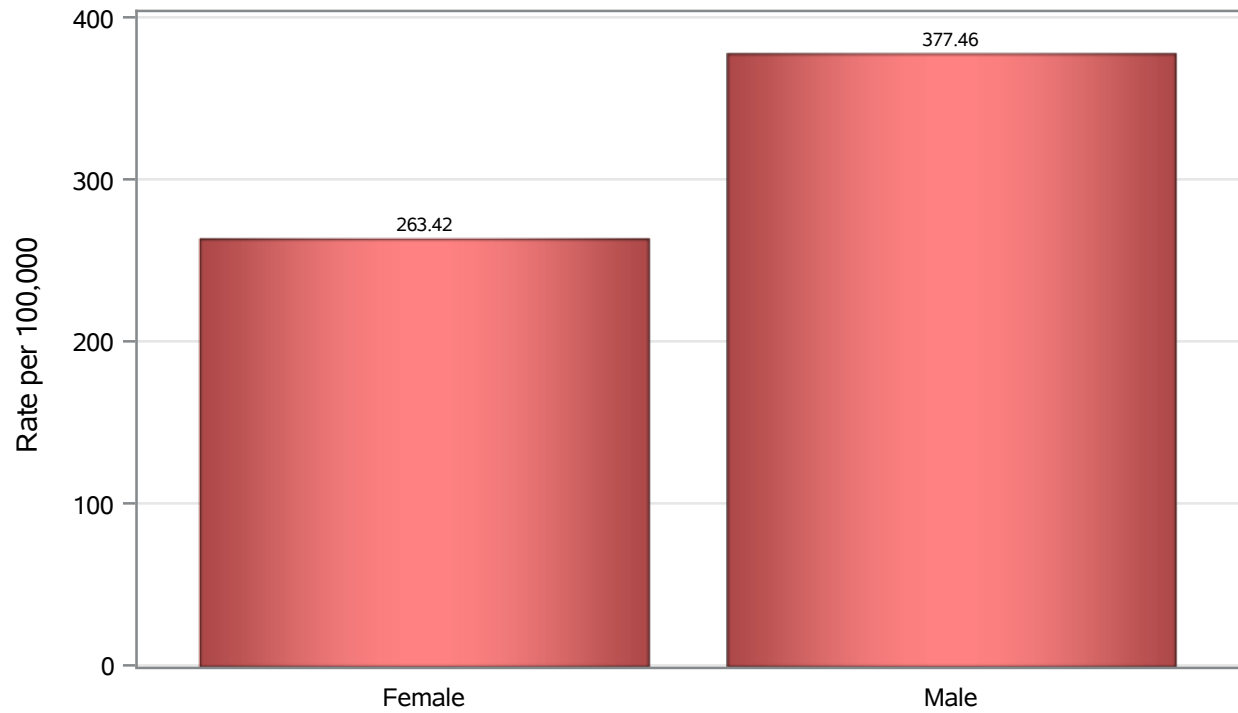


Investigations are ongoing; data are subject to change.

Reporting through 09FEB2022

North Las Vegas zip codes include 89030, 89031, 89032, 89033, 89036, 89081, 89084, 89085, 89086, 89087.

### Death Birth Sex Rates in North Las Vegas



Investigations are ongoing; data are subject to change.

Reporting through 09FEB2022

North Las Vegas zip codes include 89030, 89031, 89032, 89033, 89036, 89081, 89084, 89085, 89086, 89087.

**Table 7: Birth Sex and COVID19 in North Las Vegas**

Case Status	Birth Sex Categories	N	%	Population	Rate per 100,000
Cases	Female	29573	53.4	118823	24888
	Male	25499	46.0	114980	22177
	Unknown	309	0.6	.	.
Hospitalizations	Female	1256	47.5	118823	1057.0
	Male	1384	52.3	114980	1203.7
	Unknown	5	0.2	.	.
Deaths	Female	313	41.7	118823	263.42
	Male	434	57.9	114980	377.46
	Unknown	3	0.4	.	.

Note1: Population data source for calculating rate estimates: U.S. Census Bureau, ACS 5-year estimate.

Note2: Rates for categories with fewer than 12 cases are suppressed due to high relative standard error.

Note3: Hospitalizations are regardless of deceased status; Deaths are regardless of hospitalization status

**Investigations are ongoing; data are subject to change.**

**Reporting through 09FEB2022**

**North Las Vegas zip codes include 89030, 89031, 89032, 89033, 89036, 89081, 89084, 89085, 89086, 89087.**