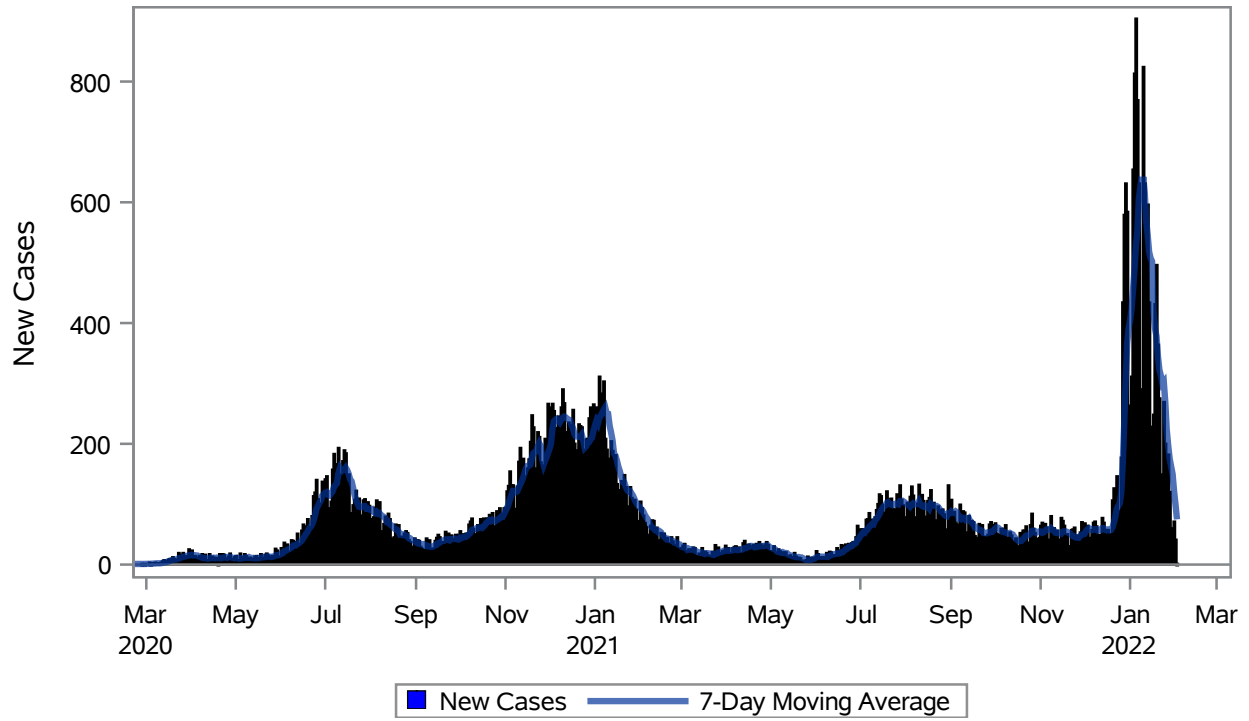


### COVID19 Cases for North Las Vegas, 7-Day Moving Average



Investigations are ongoing; data are subject to change.

Reporting through 02FEB2022

North Las Vegas zip codes include 89030, 89031, 89032, 89033, 89036, 89081, 89084, 89085, 89086, 89087.

**Table 1: New COVID19 Cases and 7-Day Moving Average in North Las Vegas, Previous Two Weeks**

| Date (Daily) | New Cases | 7-Day Moving Average |
|--------------|-----------|----------------------|
| 20JAN2022    | 364       | 345.29               |
| 21JAN2022    | 275       | 322.57               |
| 22JAN2022    | 149       | 313.00               |
| 23JAN2022    | 136       | 299.86               |
| 24JAN2022    | 269       | 302.86               |
| 25JAN2022    | 200       | 269.86               |
| 26JAN2022    | 171       | 223.43               |
| 27JAN2022    | 182       | 197.43               |
| 28JAN2022    | 120       | 175.29               |
| 29JAN2022    | 60        | 162.57               |
| 30JAN2022    | 49        | 150.14               |
| 31JAN2022    | 71        | 121.86               |

---

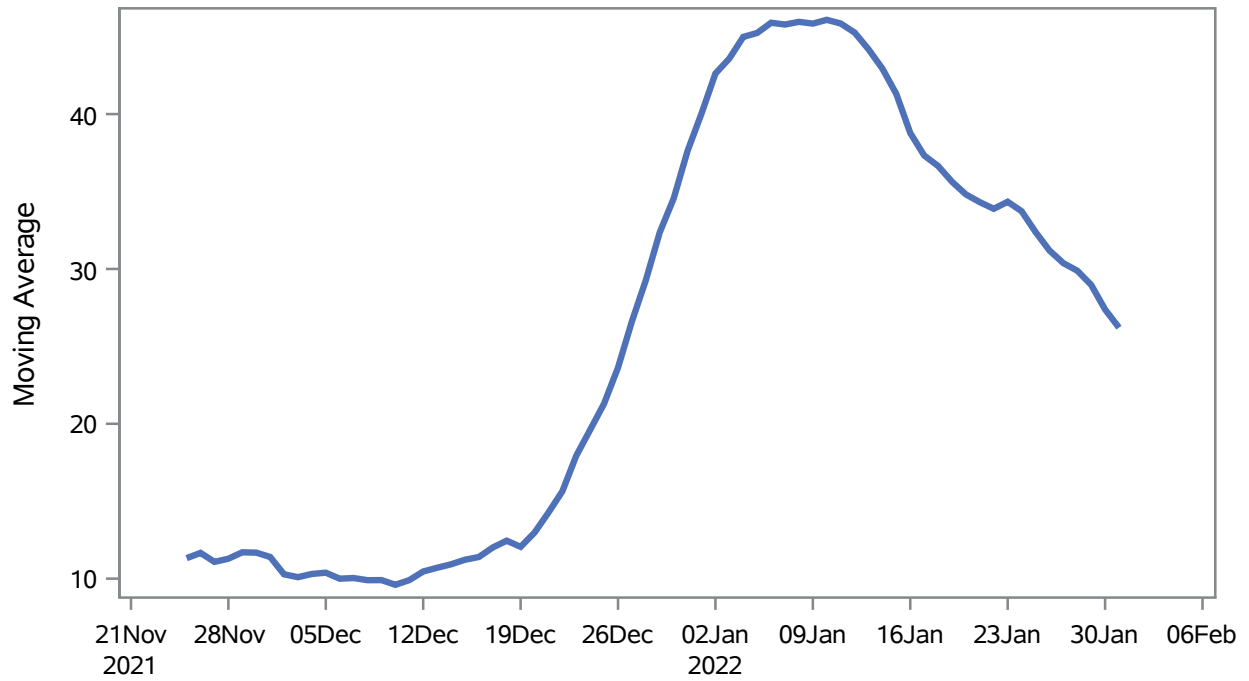
Note1: Event Date is calculated as follows based on completed information:  
1) Disease onset date 2) Disease diagnosis date 3) Lab result collection date 4) Report date to SNHD.

---

**Investigations are ongoing; data are subject to change.  
Reporting through 02FEB2022**

**North Las Vegas zip codes include 89030, 89031, 89032, 89033, 89036, 89081, 89084, 89085, 89086, 89087.**

### Percent of People Receiving COVID-19 Viral Tests Who Have Positive Results in North Las Vegas



Investigations are ongoing; data are subject to change.

Reporting through 02FEB2022

North Las Vegas zip codes include 89030, 89031, 89032, 89033, 89036, 89081, 89084, 89085, 89086, 89087.

**Table 2: Percent of People Receiving COVID-19 Viral Tests Who Have Positive Results in North Las Vegas**

| Collection Date | Positive | Negative | Equivocal | Total | % Positivity | 7-Day Moving Average |
|-----------------|----------|----------|-----------|-------|--------------|----------------------|
| 17JAN2022       | 379      | 662      | 9         | 1050  | 36.10        | 37.3                 |
| 18JAN2022       | 848      | 1195     | 4         | 2090  | 40.57        | 36.6                 |
| 19JAN2022       | 879      | 1825     | 4         | 2751  | 31.95        | 35.6                 |
| 20JAN2022       | 659      | 1358     | 2         | 2044  | 32.24        | 34.8                 |
| 21JAN2022       | 517      | 983      | 1         | 1517  | 34.08        | 34.3                 |
| 22JAN2022       | 246      | 551      | 2         | 799   | 30.79        | 33.9                 |
| 23JAN2022       | 232      | 433      | 5         | 670   | 34.63        | 34.3                 |
| 24JAN2022       | 572      | 1205     | 2         | 1797  | 31.83        | 33.7                 |
| 25JAN2022       | 413      | 890      | 2         | 1324  | 31.19        | 32.4                 |
| 26JAN2022       | 372      | 1175     | 3         | 1577  | 23.59        | 31.2                 |
| 27JAN2022       | 355      | 966      | 1         | 1339  | 26.51        | 30.4                 |
| 28JAN2022       | 261      | 584      | 6         | 851   | 30.67        | 29.9                 |
| 29JAN2022       | 108      | 334      | 1         | 443   | 24.38        | 29.0                 |
| 30JAN2022       | 90       | 293      |           | 383   | 23.50        | 27.4                 |
| 31JAN2022       | 136      | 437      | 3         | 576   | 23.61        | 26.2                 |

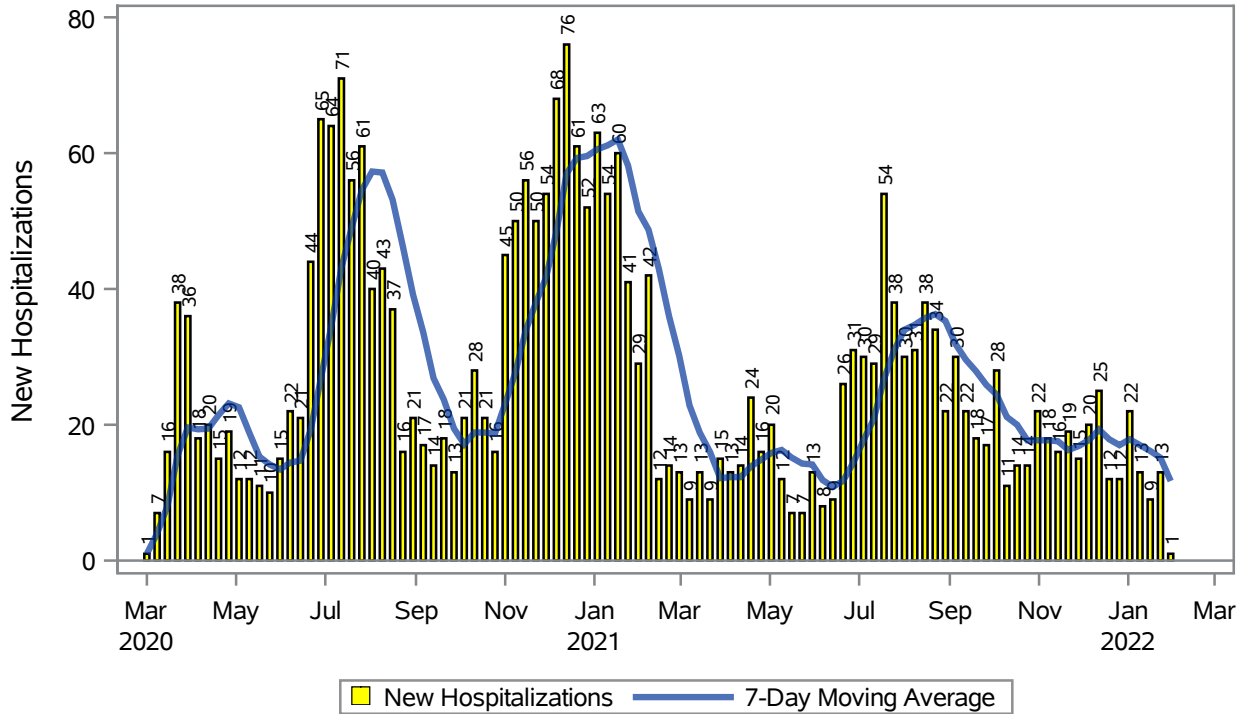
Note: Testing Data includes a 3 day delay

**Investigations are ongoing; data are subject to change.**

**Reporting through 02FEB2022**

**North Las Vegas zip codes include 89030, 89031, 89032, 89033, 89036, 89081, 89084, 89085, 89086, 89087.**

### COVID19 Hospitalizations for North Las Vegas, 7-Day Moving Average



Investigations are ongoing; data are subject to change.

Reporting through 02FEB2022

North Las Vegas zip codes include 89030, 89031, 89032, 89033, 89036, 89081, 89084, 89085, 89086, 89087.

**Table 3: New COVID19-Related Hospitalizations and 7-Day Moving Average in North Las Vegas, previous month**

| Week      | Hospitalizations | 7-Day Moving Average |
|-----------|------------------|----------------------|
| 09JAN2022 | 13               | 17.0                 |
| 16JAN2022 | 9                | 16.1                 |
| 23JAN2022 | 13               | 15.1                 |
| 30JAN2022 | 1                | 11.7                 |

---

Note1: Admission Date is calculated as follows based on completed information:  
A) COVID19 Case is hospitalized B) COVID19 Case has a hospital admission date.

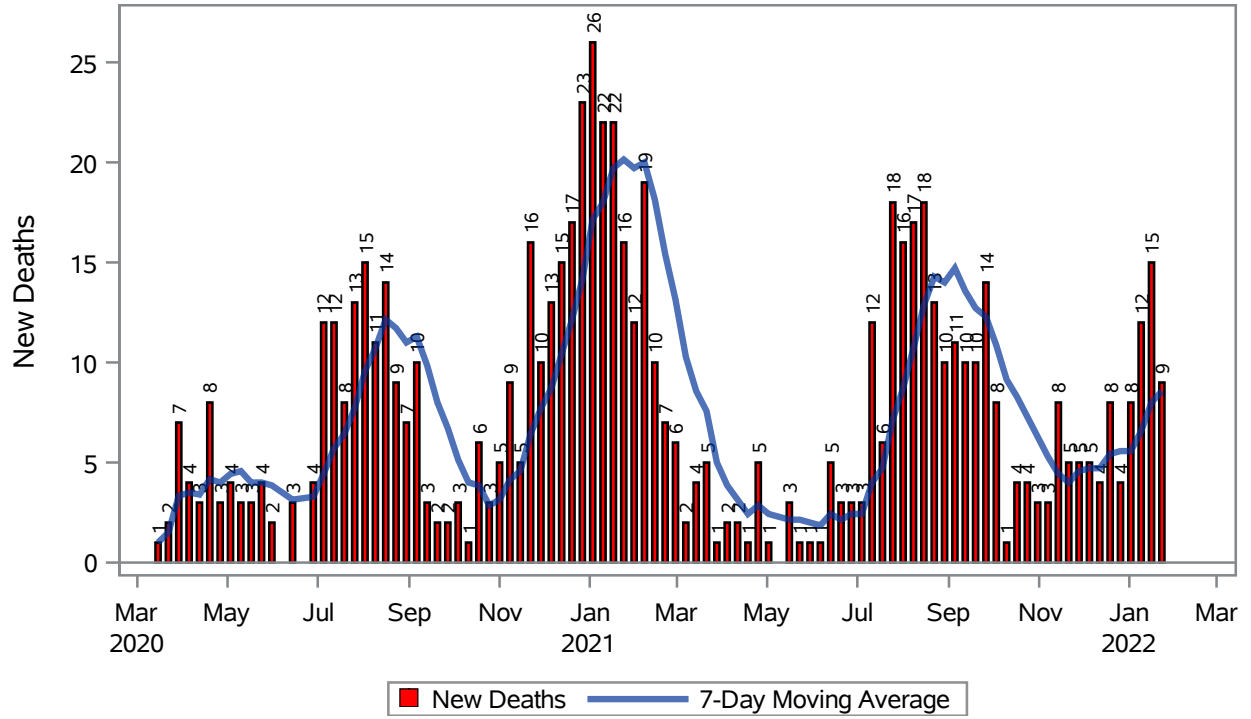
If admission date is missing, then the following is substituted temporarily, in order:  
1) Disease onset date 2) Disease diagnosis date 3) Lab result collection date 4) Report date to SNHD.

---

**Investigations are ongoing; data are subject to change.  
Reporting through 02FEB2022**

**North Las Vegas zip codes include 89030, 89031, 89032, 89033, 89036, 89081, 89084, 89085, 89086, 89087.**

### COVID19 Deaths for North Las Vegas, 7-Day Moving Average



Investigations are ongoing; data are subject to change.

Reporting through 02FEB2022

North Las Vegas zip codes include 89030, 89031, 89032, 89033, 89036, 89081, 89084, 89085, 89086, 89087.

**Table 4: New COVID19-Related Deaths and 7-Day Moving Average in North Las Vegas, Previous Month**

| Week      | Deaths | 7-Day Moving Average |
|-----------|--------|----------------------|
| 09JAN2022 | 12     | 6.57                 |
| 16JAN2022 | 15     | 8.00                 |
| 23JAN2022 | 9      | 8.57                 |

---

Note1: Date of Death is calculated as follows based on completed information:  
A) COVID19 Case is reported as deceased B) COVID19 Case has a reported date of death.

If date of death is missing, then the following is substituted temporarily, in order:  
1) Disease onset date 2) Disease diagnosis date  
3) Lab result collection date 4) Report date to SNHD.

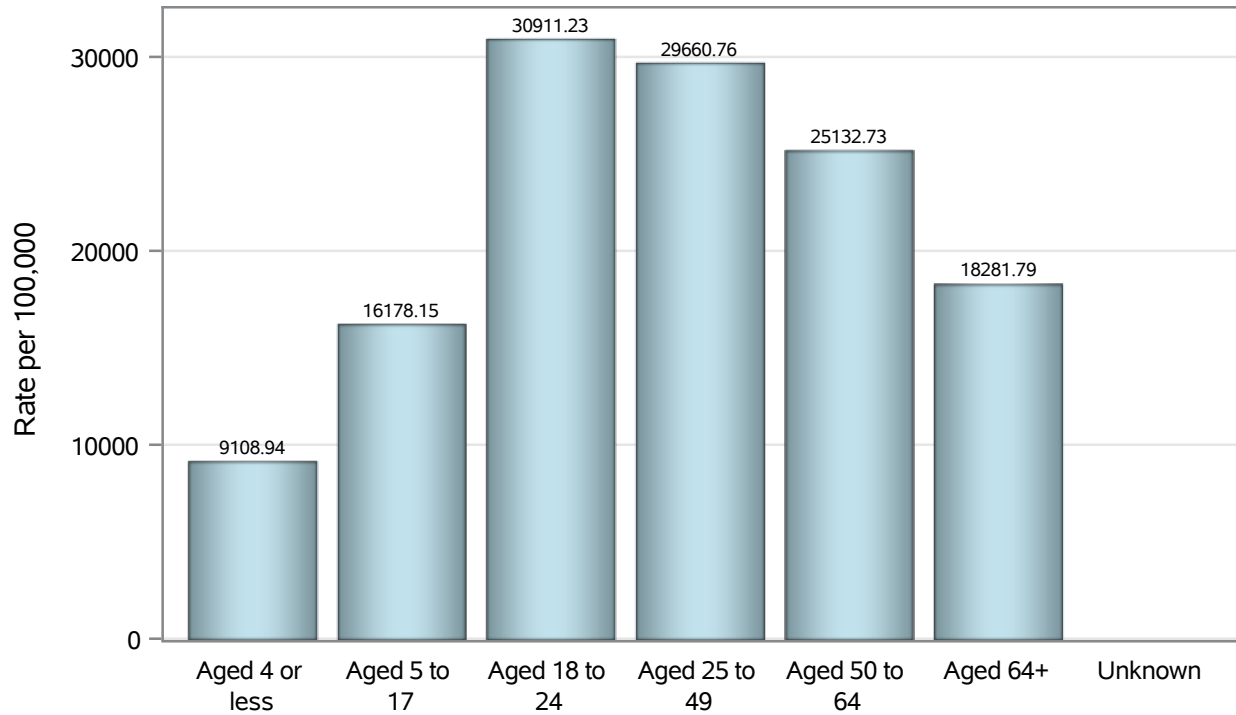
---

**Investigations are ongoing; data are subject to change.  
Reporting through 02FEB2022**

**North Las Vegas zip codes include 89030, 89031, 89032, 89033, 89036, 89081, 89084, 89085, 89086, 89087.**



### Case Age Rates in North Las Vegas

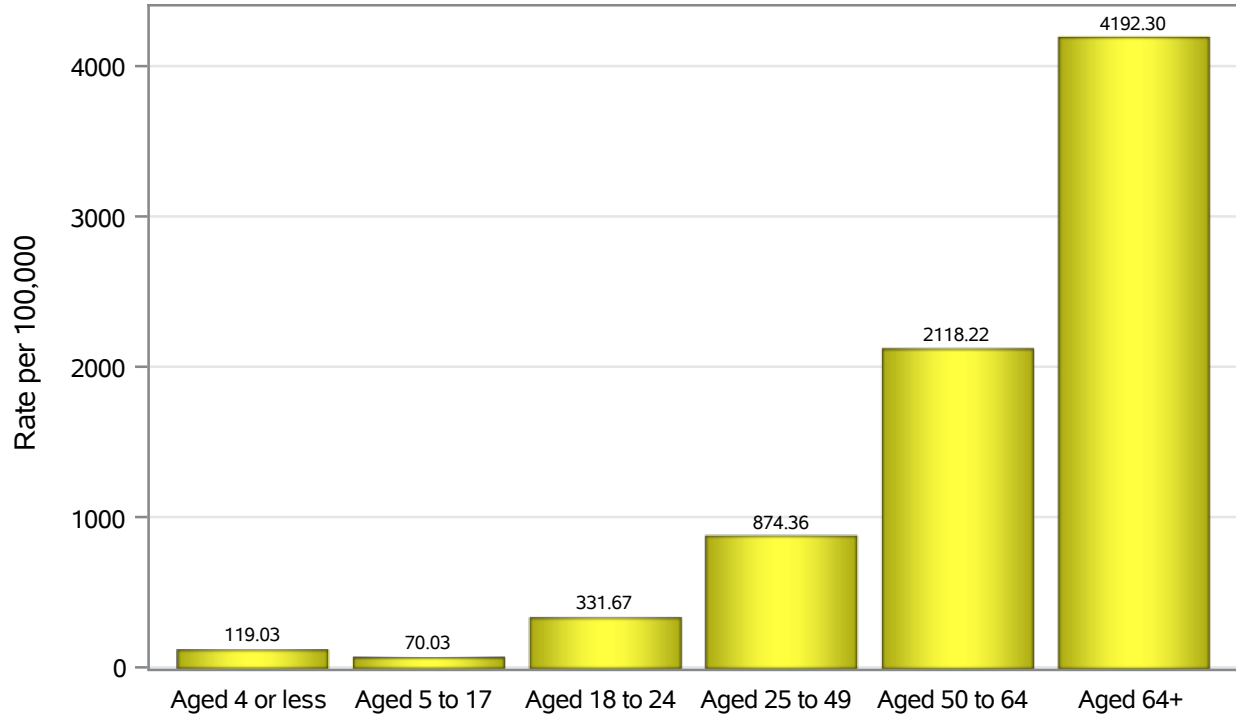


Investigations are ongoing; data are subject to change.

Reporting through 02FEB2022

North Las Vegas zip codes include 89030, 89031, 89032, 89033, 89036, 89081, 89084, 89085, 89086, 89087.

### Hospitalization Age Rates in North Las Vegas

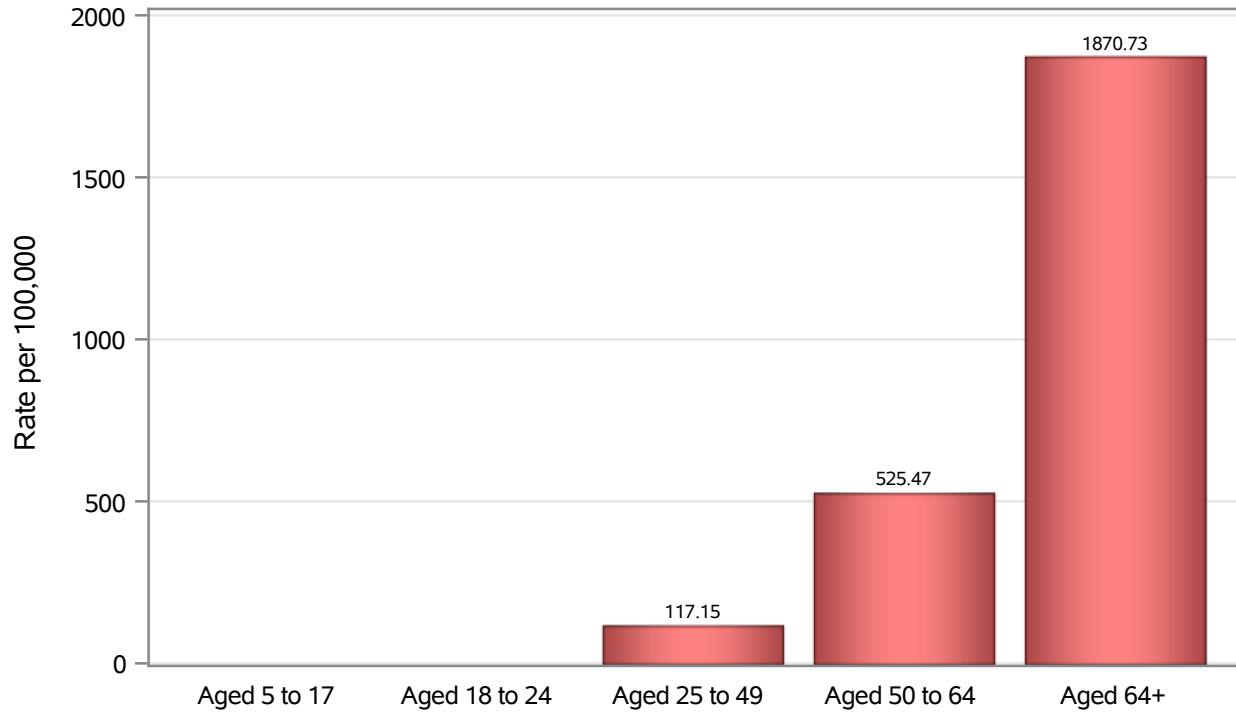


Investigations are ongoing; data are subject to change.

Reporting through 02FEB2022

North Las Vegas zip codes include 89030, 89031, 89032, 89033, 89036, 89081, 89084, 89085, 89086, 89087.

### Death Age Rates in North Las Vegas



Investigations are ongoing; data are subject to change.

Reporting through 02FEB2022

North Las Vegas zip codes include 89030, 89031, 89032, 89033, 89036, 89081, 89084, 89085, 89086, 89087.

**Table 5: Age and COVID19 in North Las Vegas**

| Case Status      | Age Categories | N            | %    | Population | Rate per 100,000 |
|------------------|----------------|--------------|------|------------|------------------|
| Cases            | Aged 4 or less | 1607         | 2.9  | 17,642     | 9108.9           |
|                  | Aged 5 to 17   | 8086         | 14.7 | 49,981     | 16178            |
|                  | Aged 18 to 24  | 7083         | 12.9 | 22,914     | 30911            |
|                  | Aged 25 to 49  | 24560        | 44.7 | 82,803     | 29661            |
|                  | Aged 50 to 64  | 9231         | 16.8 | 36,729     | 25133            |
|                  | Aged 64+       | 4339         | 7.9  | 23,734     | 18282            |
|                  | Unknown        | 6            | 0.0  | .          | .                |
| Hospitalizations | Aged 4 or less | 21           | 0.8  | 17,642     | 119.03           |
|                  | Aged 5 to 17   | 35           | 1.3  | 49,981     | 70.03            |
|                  | Aged 18 to 24  | 76           | 2.9  | 22,914     | 331.67           |
|                  | Aged 25 to 49  | 724          | 27.5 | 82,803     | 874.36           |
|                  | Aged 50 to 64  | 778          | 29.6 | 36,729     | 2118.2           |
|                  | Aged 64+       | 995          | 37.8 | 23,734     | 4192.3           |
|                  | Deaths         | Aged 5 to 17 | 1    | 0.1        | 49,981           |
| Aged 18 to 24    |                | 1            | 0.1  | 22,914     | .                |
| Aged 25 to 49    |                | 97           | 13.2 | 82,803     | 117.15           |
| Aged 50 to 64    |                | 193          | 26.2 | 36,729     | 525.47           |
| Aged 64+         |                | 444          | 60.3 | 23,734     | 1870.7           |

Note1: Population data source for calculating rate estimates: U.S. Census Bureau, ACS 5-year estimate.

Note2: Rates for categories with fewer than 12 cases are suppressed due to high relative standard error.

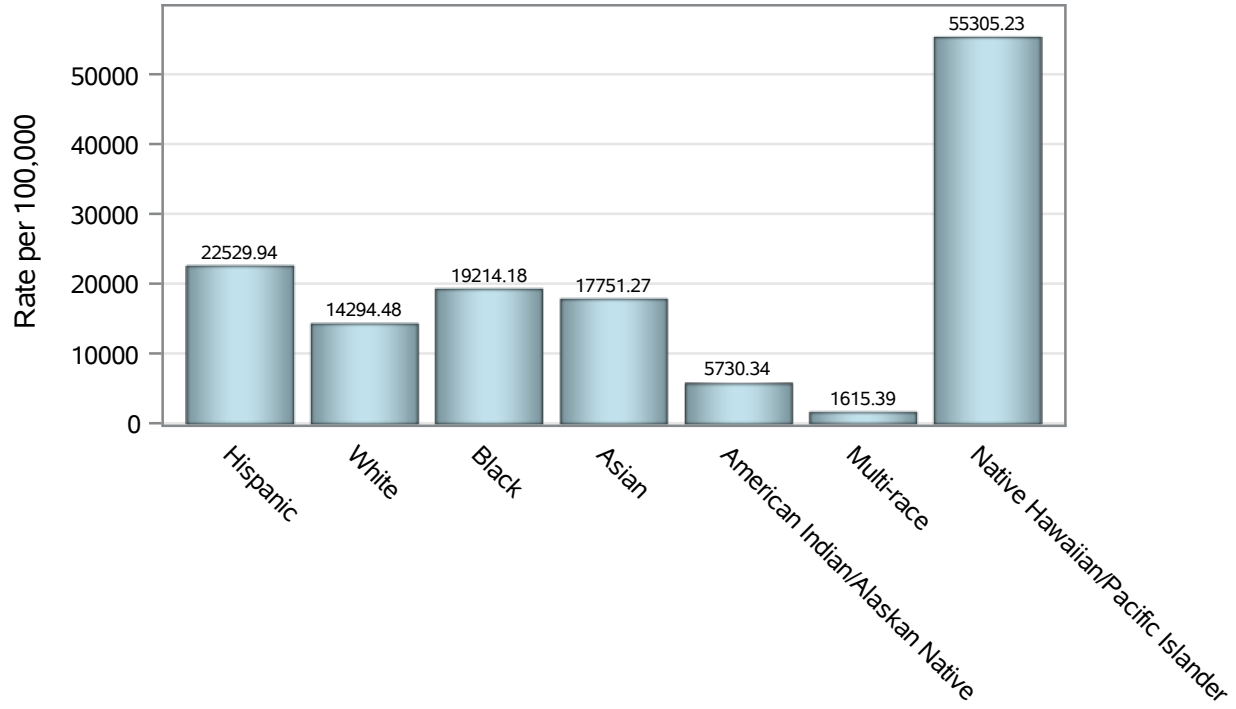
Note3: Hospitalizations are regardless of deceased status; Deaths are regardless of hospitalization status

**Investigations are ongoing; data are subject to change.**

**Reporting through 02FEB2022**

**North Las Vegas zip codes include 89030, 89031, 89032, 89033, 89036, 89081, 89084, 89085, 89086, 89087.**

### Case Race/Ethnicity Rates in North Las Vegas

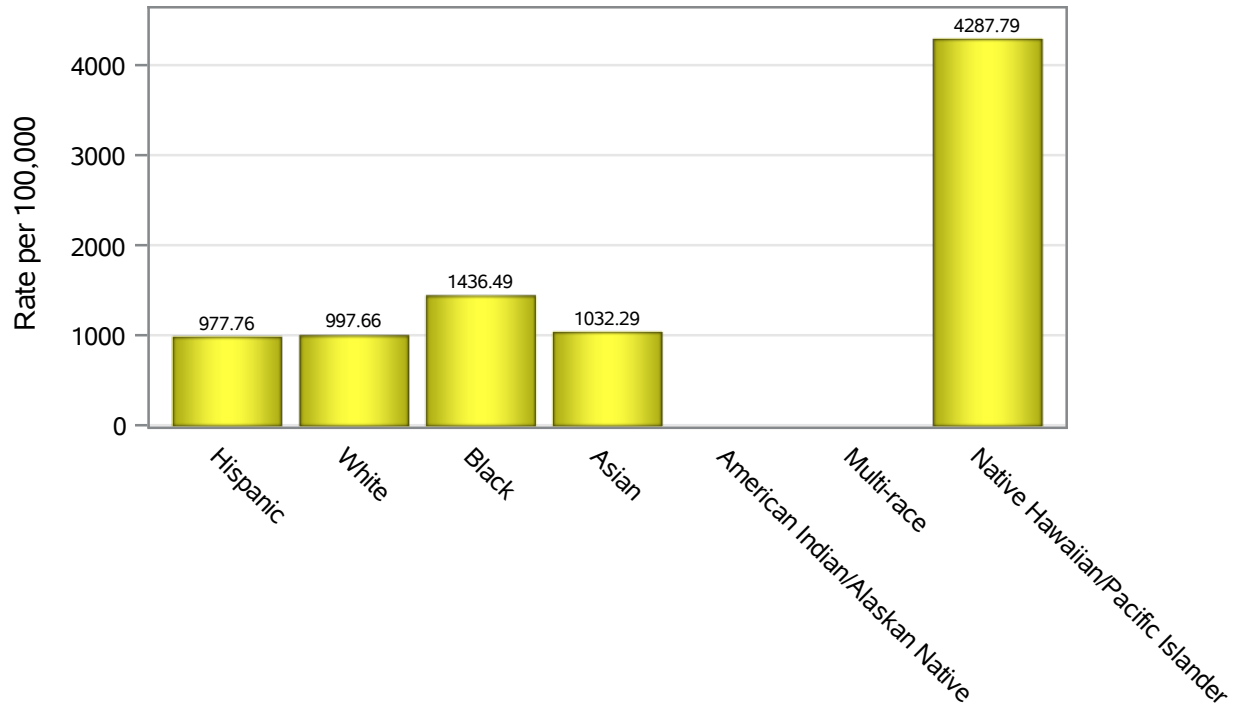


Investigations are ongoing; data are subject to change.

Reporting through 02FEB2022

North Las Vegas zip codes include 89030, 89031, 89032, 89033, 89036, 89081, 89084, 89085, 89086, 89087.

### Hospitalization Race/Ethnicity Rates in North Las Vegas

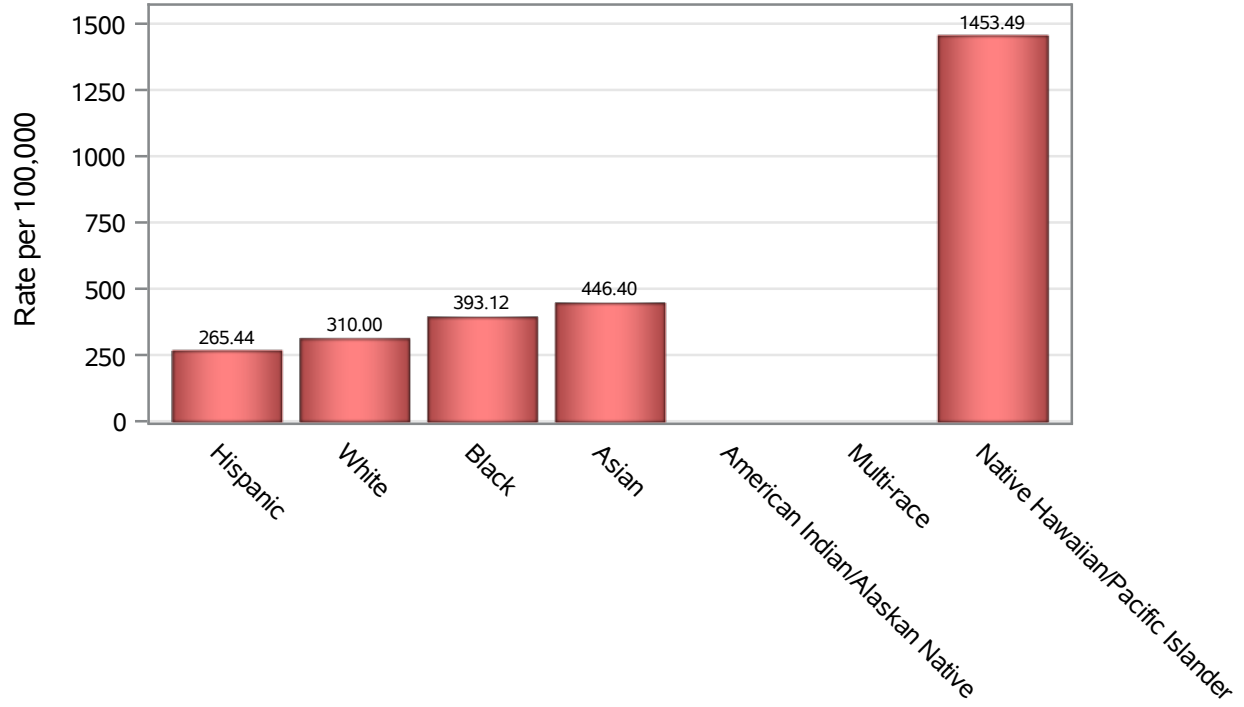


Investigations are ongoing; data are subject to change.

Reporting through 02FEB2022

North Las Vegas zip codes include 89030, 89031, 89032, 89033, 89036, 89081, 89084, 89085, 89086, 89087.

### Death Race/Ethnicity Rates in North Las Vegas



Investigations are ongoing; data are subject to change.

Reporting through 02FEB2022

North Las Vegas zip codes include 89030, 89031, 89032, 89033, 89036, 89081, 89084, 89085, 89086, 89087.

**Table 6: Race/Ethnicity and COVID19 in North Las Vegas**

| Case Status      | Race Ethnicity Categories        | N     | %    | Population | Rate per 100,000 |
|------------------|----------------------------------|-------|------|------------|------------------|
| Cases            | Hispanic                         | 21729 | 39.6 | 96,445     | 22530            |
|                  | White                            | 9084  | 16.5 | 63,549     | 14294            |
|                  | Black                            | 9042  | 16.5 | 47,059     | 19214            |
|                  | Asian                            | 2545  | 4.6  | 14,337     | 17751            |
|                  | American Indian/Alaskan Native   | 51    | 0.1  | 890        | 5730.3           |
|                  | Multi-race                       | 157   | 0.3  | 9,719      | 1615.4           |
|                  | Native Hawaiian/Pacific Islander | 761   | 1.4  | 1,376      | 55305            |
|                  | Unknown                          | 11543 | 21.0 | .          | .                |
| Hospitalizations | Hispanic                         | 943   | 35.9 | 96,445     | 977.76           |
|                  | White                            | 634   | 24.1 | 63,549     | 997.66           |
|                  | Black                            | 676   | 25.7 | 47,059     | 1436.5           |
|                  | Asian                            | 148   | 5.6  | 14,337     | 1032.3           |
|                  | American Indian/Alaskan Native   | 9     | 0.3  | 890        | .                |
|                  | Multi-race                       | 9     | 0.3  | 9,719      | .                |
|                  | Native Hawaiian/Pacific Islander | 59    | 2.2  | 1,376      | 4287.8           |
|                  | Unknown                          | 151   | 5.7  | .          | .                |
| Deaths           | Hispanic                         | 256   | 34.8 | 96,445     | 265.44           |
|                  | White                            | 197   | 26.8 | 63,549     | 310.00           |
|                  | Black                            | 185   | 25.1 | 47,059     | 393.12           |
|                  | Asian                            | 64    | 8.7  | 14,337     | 446.40           |
|                  | American Indian/Alaskan Native   | 4     | 0.5  | 890        | .                |
|                  | Multi-race                       | 5     | 0.7  | 9,719      | .                |
|                  | Native Hawaiian/Pacific Islander | 20    | 2.7  | 1,376      | 1453.5           |
|                  | Unknown                          | 5     | 0.7  | .          | .                |

Note1: Population data source for calculating rate estimates: U.S. Census Bureau, ACS 5-year estimate.

Note2: Rates for categories with fewer than 12 cases are suppressed due to high relative standard error.

Note3: Hospitalizations are regardless of deceased status; Deaths are regardless of hospitalization status

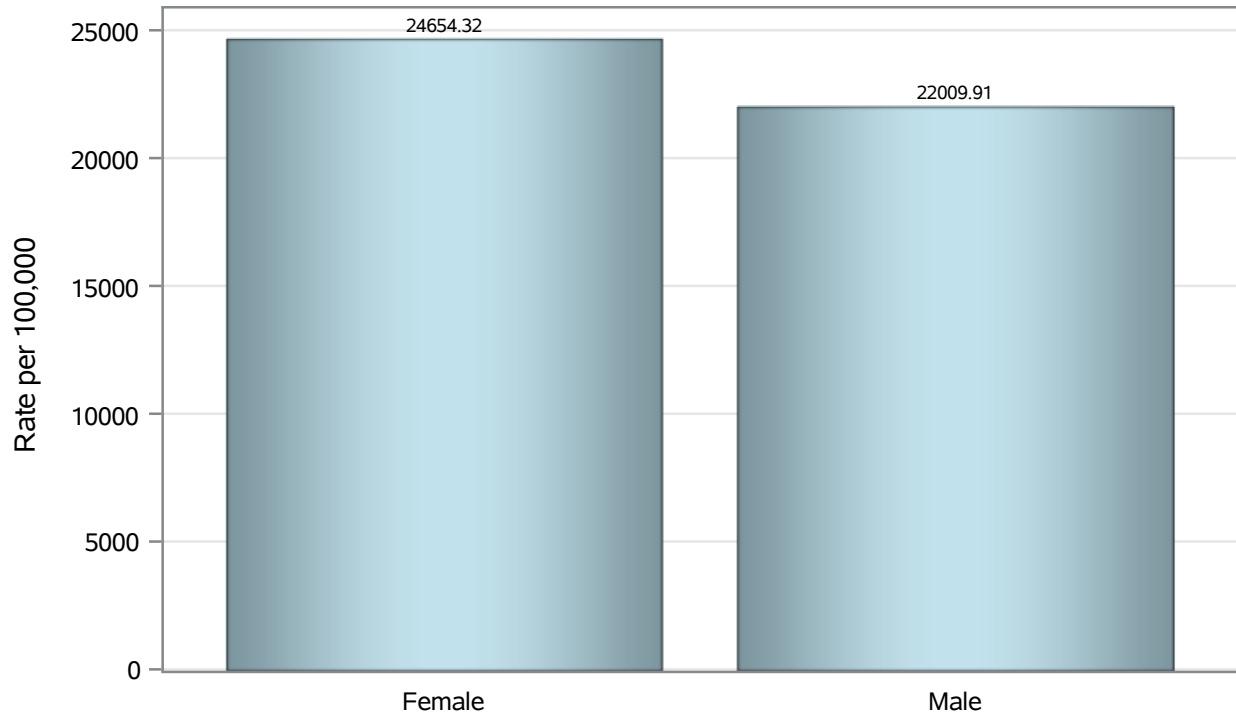
**Investigations are ongoing; data are subject to change.**

**Reporting through 02FEB2022**

**North Las Vegas zip codes include 89030, 89031, 89032, 89033, 89036, 89081, 89084, 89085, 89086, 89087.**



### Case Birth Sex Rates in North Las Vegas

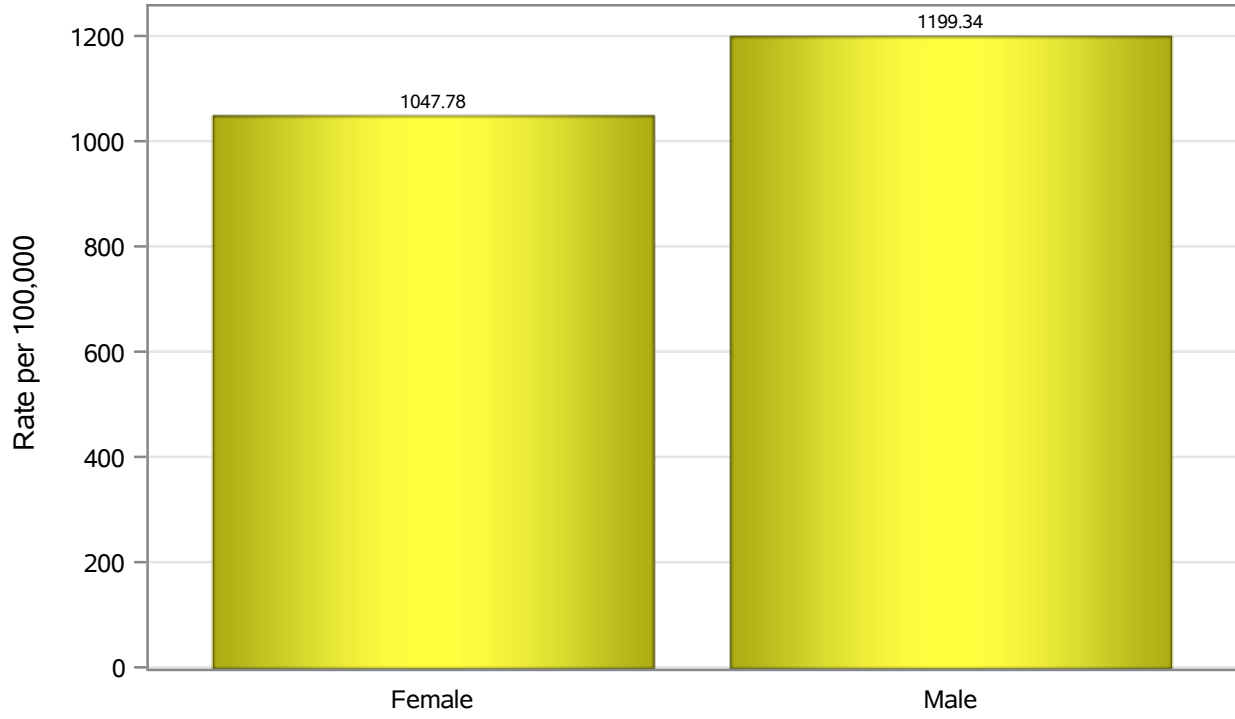


Investigations are ongoing; data are subject to change.

Reporting through 02FEB2022

North Las Vegas zip codes include 89030, 89031, 89032, 89033, 89036, 89081, 89084, 89085, 89086, 89087.

### Hospitalization Birth Sex Rates in North Las Vegas

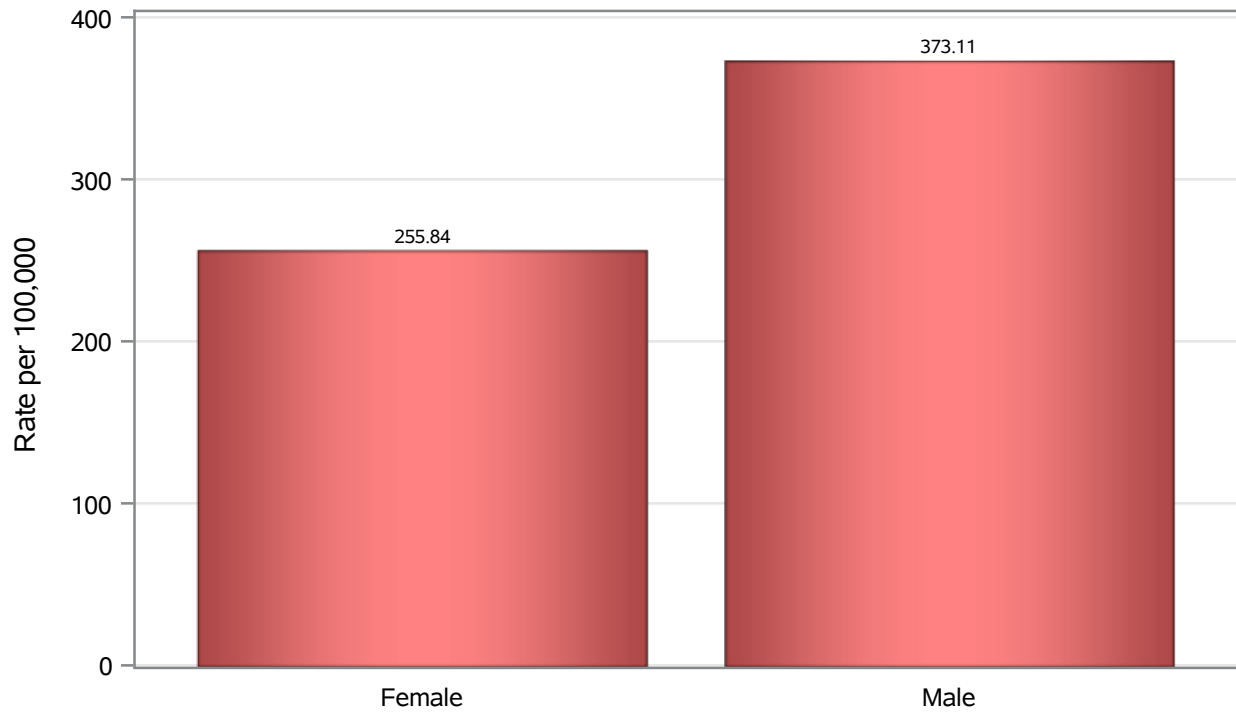


Investigations are ongoing; data are subject to change.

Reporting through 02FEB2022

North Las Vegas zip codes include 89030, 89031, 89032, 89033, 89036, 89081, 89084, 89085, 89086, 89087.

### Death Birth Sex Rates in North Las Vegas



Investigations are ongoing; data are subject to change.

Reporting through 02FEB2022

North Las Vegas zip codes include 89030, 89031, 89032, 89033, 89036, 89081, 89084, 89085, 89086, 89087.

**Table 7: Birth Sex and COVID19 in North Las Vegas**

| Case Status      | Birth Sex Categories | N     | %    | Population | Rate per 100,000 |
|------------------|----------------------|-------|------|------------|------------------|
| Cases            | Female               | 29295 | 53.3 | 118823     | 24654            |
|                  | Male                 | 25307 | 46.1 | 114980     | 22010            |
|                  | Unknown              | 310   | 0.6  | .          | .                |
| Hospitalizations | Female               | 1245  | 47.4 | 118823     | 1047.8           |
|                  | Male                 | 1379  | 52.5 | 114980     | 1199.3           |
|                  | Unknown              | 5     | 0.2  | .          | .                |
| Deaths           | Female               | 304   | 41.3 | 118823     | 255.84           |
|                  | Male                 | 429   | 58.3 | 114980     | 373.11           |
|                  | Unknown              | 3     | 0.4  | .          | .                |

Note1: Population data source for calculating rate estimates: U.S. Census Bureau, ACS 5-year estimate.

Note2: Rates for categories with fewer than 12 cases are suppressed due to high relative standard error.

Note3: Hospitalizations are regardless of deceased status; Deaths are regardless of hospitalization status

**Investigations are ongoing; data are subject to change.**

**Reporting through 02FEB2022**

**North Las Vegas zip codes include 89030, 89031, 89032, 89033, 89036, 89081, 89084, 89085, 89086, 89087.**