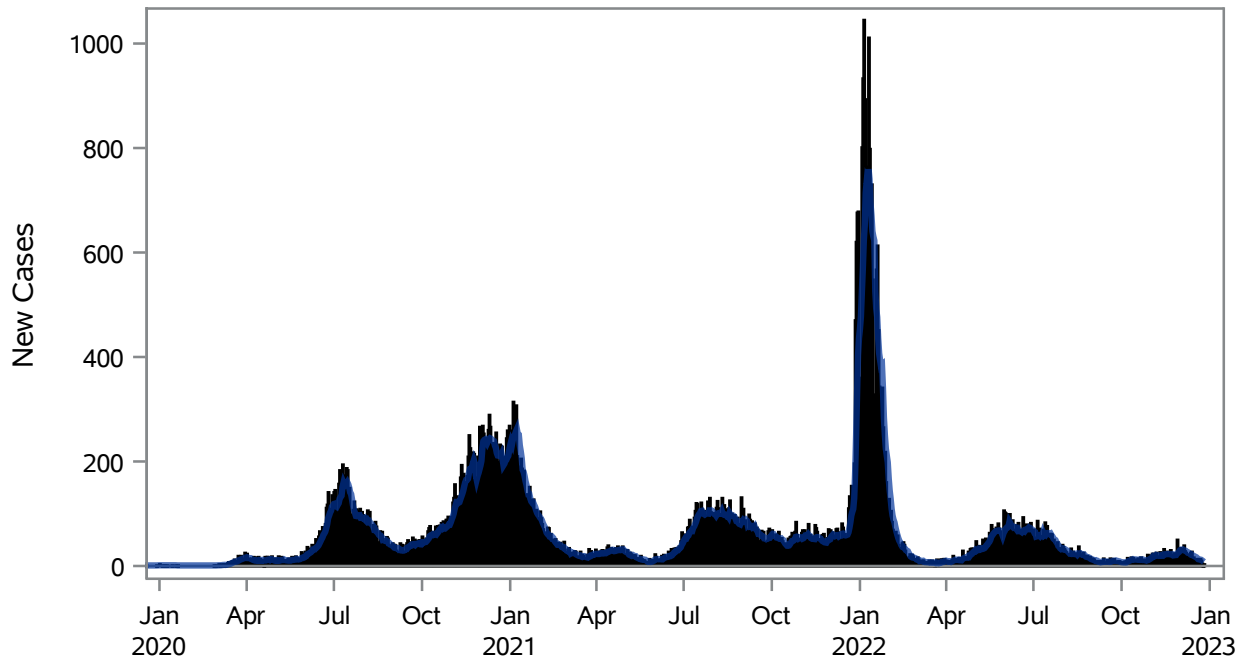


COVID19 Cases for North Las Vegas, 7-Day Moving Average



■ New Cases — 7-Day Moving Average

Investigations are ongoing; data are subject to change.

Reporting through 26DEC2022

North Las Vegas zip codes include 89030, 89031, 89032, 89033, 89036, 89081, 89084, 89085, 89086, 89087.

Table 1: New COVID19 Cases and 7-Day Moving Average in North Las Vegas, Previous Two Weeks

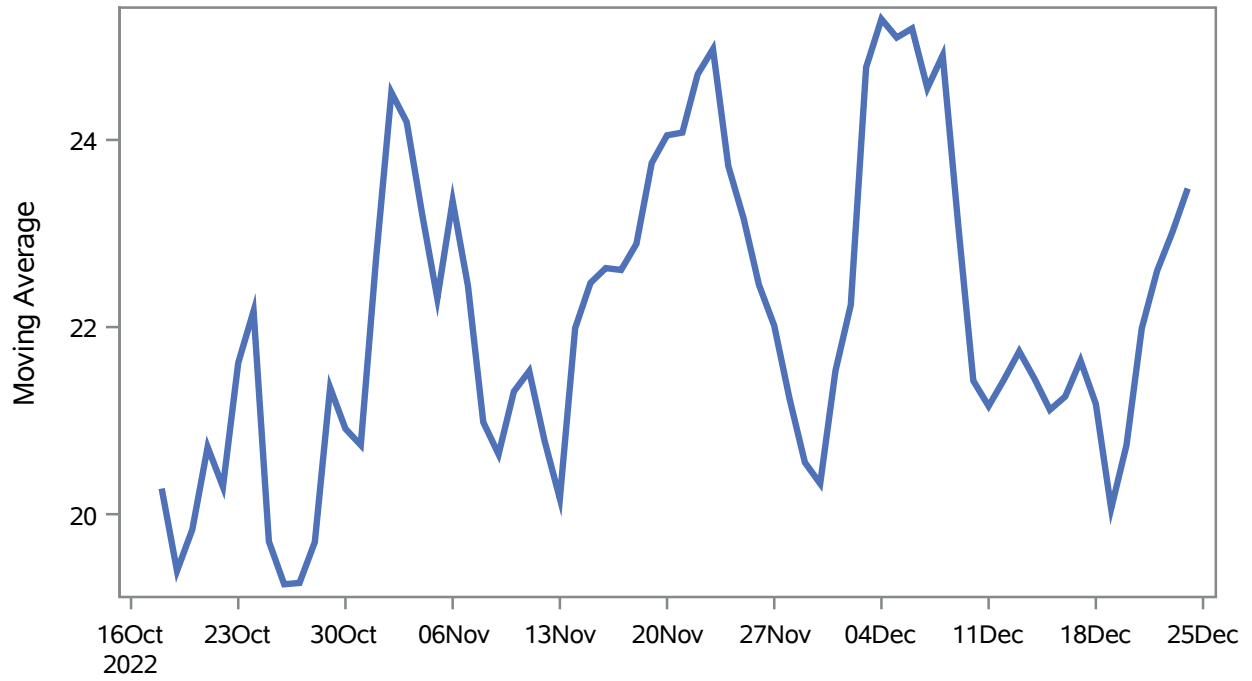
Date (Daily)	New Cases	7-Day Moving Average
13DEC2022	27	22.14
14DEC2022	14	20.57
15DEC2022	16	19.71
16DEC2022	12	18.57
17DEC2022	12	17.71
18DEC2022	11	16.71
19DEC2022	13	15.00
20DEC2022	13	13.00
21DEC2022	11	12.57
22DEC2022	13	12.14
23DEC2022	10	11.86
24DEC2022	4	10.71

Note1: Event Date is calculated as follows based on completed information:
1) Disease onset date 2) Disease diagnosis date 3) Lab result collection date 4) Report date to SNHD.

**Investigations are ongoing; data are subject to change.
Reporting through 26DEC2022**

North Las Vegas zip codes include 89030, 89031, 89032, 89033, 89036, 89081, 89084, 89085, 89086, 89087.

Percent of People Receiving COVID-19 Viral Tests Who Have Positive Results in North Las Vegas



Investigations are ongoing; data are subject to change.

Reporting through 26DEC2022

North Las Vegas zip codes include 89030, 89031, 89032, 89033, 89036, 89081, 89084, 89085, 89086, 89087.

Table 2: Percent of People Receiving COVID-19 Viral Tests Who Have Positive Results in North Las Vegas

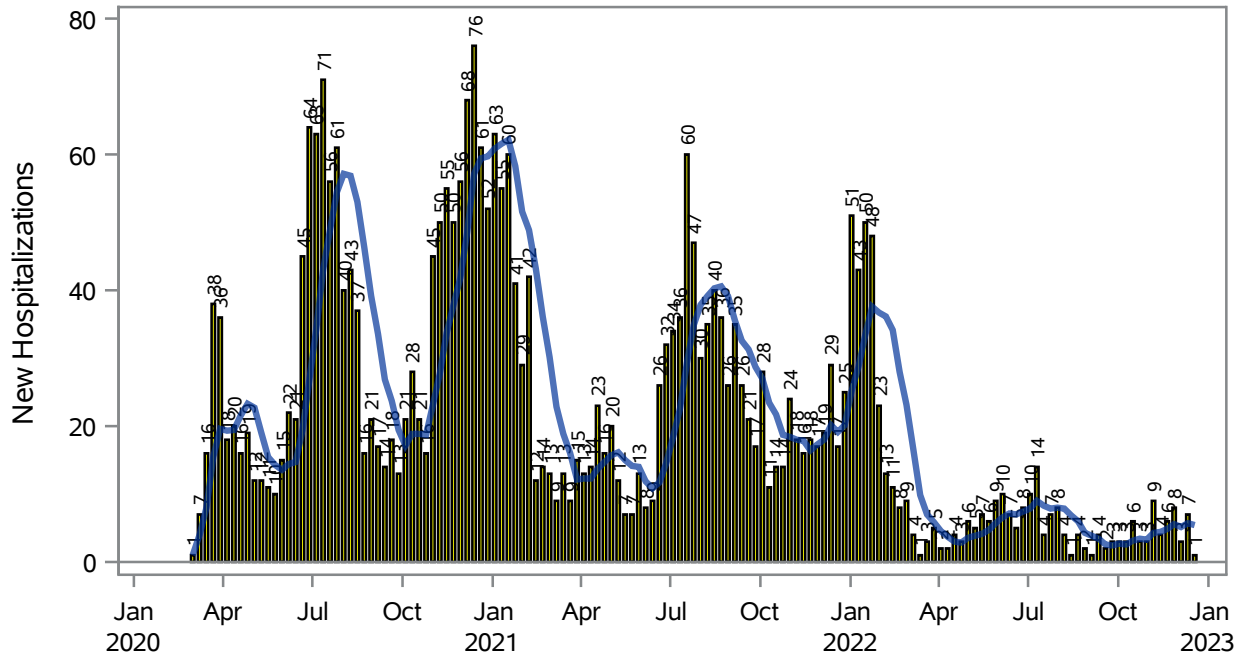
Collection Date	Positive	Negative	Equivocal	Total	% Positivity	7-Day Moving Average
10DEC2022	38	120		158	24.05	21.4
11DEC2022	35	113		148	23.65	21.2
12DEC2022	44	143		187	23.53	21.4
13DEC2022	46	178	3	227	20.26	21.7
14DEC2022	24	122		146	16.44	21.4
15DEC2022	41	130		171	23.98	21.1
16DEC2022	37	182		219	16.89	21.3
17DEC2022	27	74		101	26.73	21.6
18DEC2022	20	78		98	20.41	21.2
19DEC2022	41	219	1	261	15.71	20.1
20DEC2022	35	105		140	25.00	20.7
21DEC2022	34	101		135	25.19	22.0
22DEC2022	41	103	1	145	28.28	22.6
23DEC2022	19	77		96	19.79	23.0
24DEC2022	18	42		60	30.00	23.5

Note: Testing Data includes a 3 day delay

**Investigations are ongoing; data are subject to change.
Reporting through 26DEC2022**

North Las Vegas zip codes include 89030, 89031, 89032, 89033, 89036, 89081, 89084, 89085, 89086, 89087.

COVID19 Hospitalizations for North Las Vegas, 7-Day Moving Average



New Hospitalizations
 7-Day Moving Average

Investigations are ongoing; data are subject to change.

Reporting through 26DEC2022

North Las Vegas zip codes include 89030, 89031, 89032, 89033, 89036, 89081, 89084, 89085, 89086, 89087.

Table 3: New COVID19-Related Hospitalizations and 7-Day Moving Average in North Las Vegas, previous month

Week	Hospitalizations	7-Day Moving Average
27NOV2022	8	5.57
04DEC2022	3	5.14
11DEC2022	7	5.71
18DEC2022	1	5.43

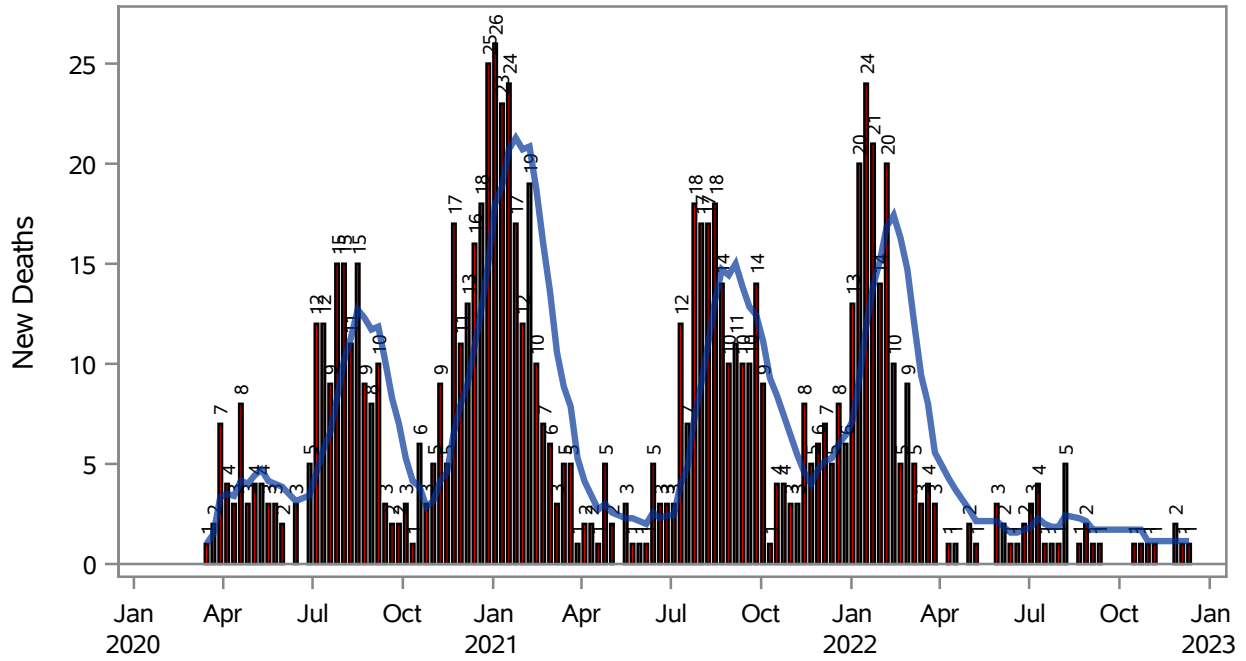
Note1: Admission Date is calculated as follows based on completed information:
A) COVID19 Case is hospitalized B) COVID19 Case has a hospital admission date.

If admission date is missing, then the following is substituted temporarily, in order:
1) Disease onset date 2) Disease diagnosis date 3) Lab result collection date 4) Report date to SNHD.

**Investigations are ongoing; data are subject to change.
Reporting through 26DEC2022**

North Las Vegas zip codes include 89030, 89031, 89032, 89033, 89036, 89081, 89084, 89085, 89086, 89087.

COVID19 Deaths for North Las Vegas, 7-Day Moving Average



■ New Deaths — 7-Day Moving Average

Investigations are ongoing; data are subject to change.

Reporting through 26DEC2022

North Las Vegas zip codes include 89030, 89031, 89032, 89033, 89036, 89081, 89084, 89085, 89086, 89087.

Table 4: New COVID19-Related Deaths and 7-Day Moving Average in North Las Vegas, Previous Month

Week	Deaths	7-Day Moving Average
27NOV2022	2	1.14
04DEC2022	1	1.14
11DEC2022	1	1.14

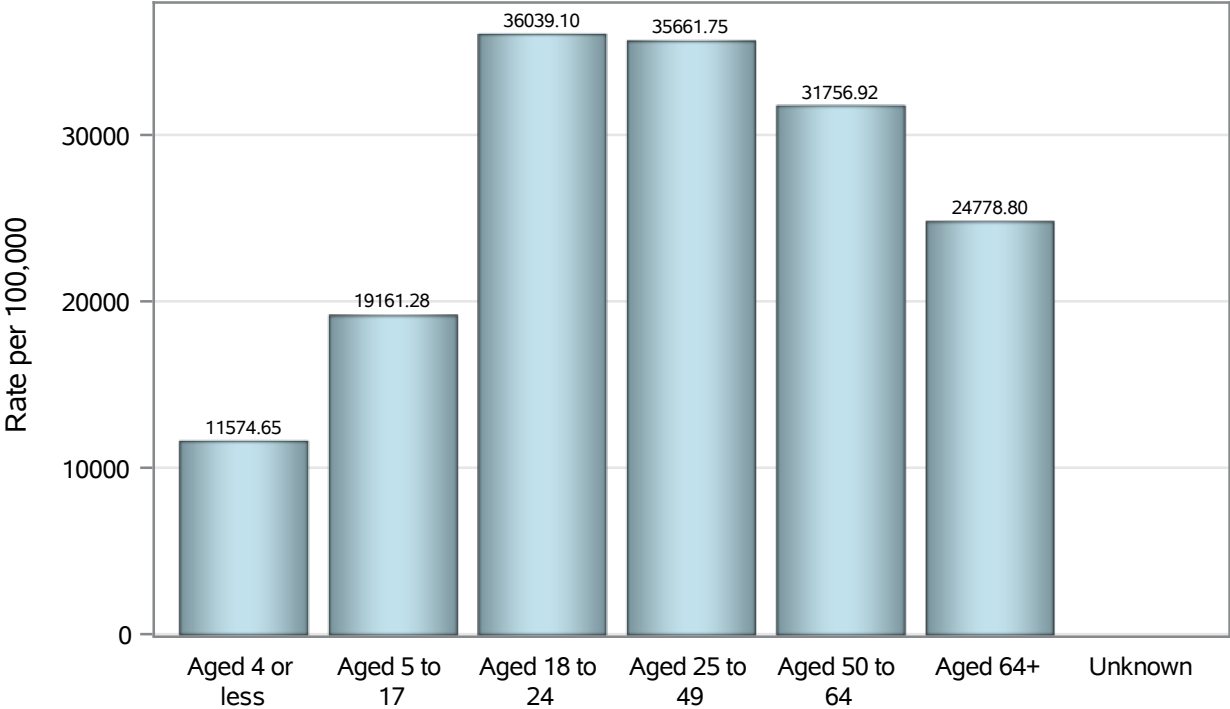
Note1: Date of Death is calculated as follows based on completed information:
A) COVID19 Case is reported as deceased B) COVID19 Case has a reported date of death.

If date of death is missing, then the following is substituted temporarily, in order:
1) Disease onset date 2) Disease diagnosis date
3) Lab result collection date 4) Report date to SNHD.

**Investigations are ongoing; data are subject to change.
Reporting through 26DEC2022**

North Las Vegas zip codes include 89030, 89031, 89032, 89033, 89036, 89081, 89084, 89085, 89086, 89087.

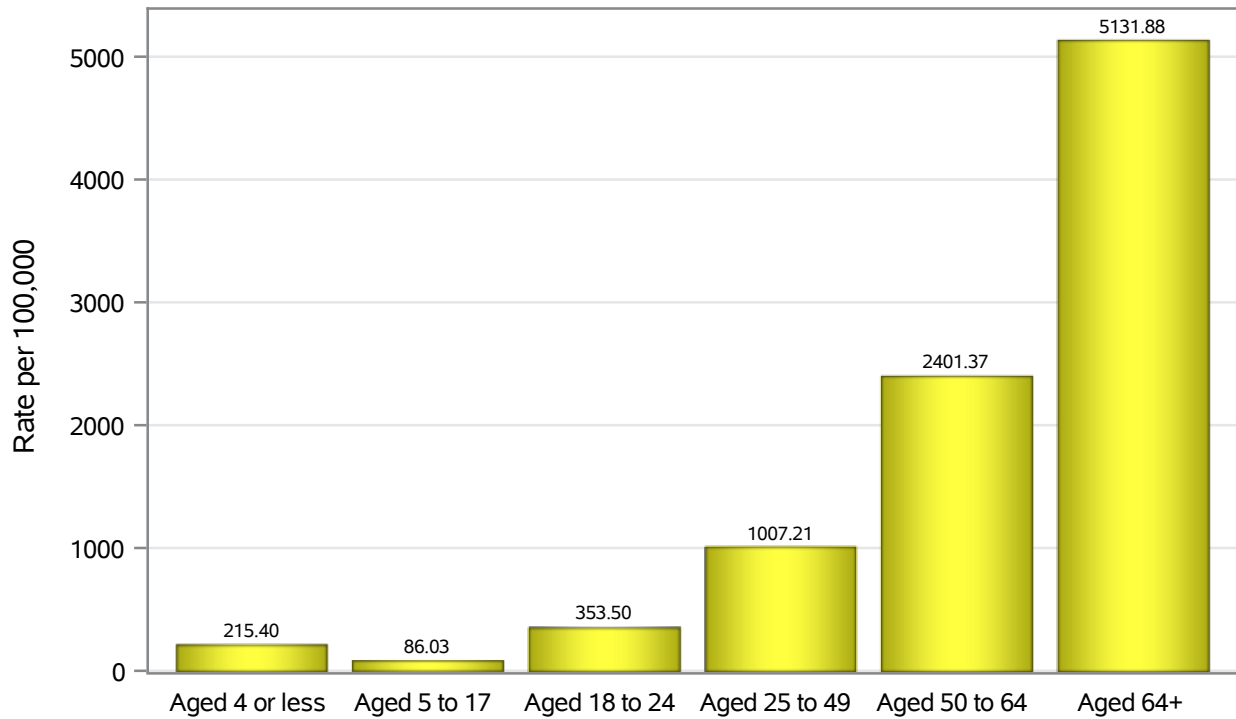
Case Age Rates in North Las Vegas



Investigations are ongoing; data are subject to change.
Reporting through 26DEC2022

North Las Vegas zip codes include 89030, 89031, 89032, 89033, 89036, 89081, 89084, 89085, 89086, 89087.

Hospitalization Age Rates in North Las Vegas

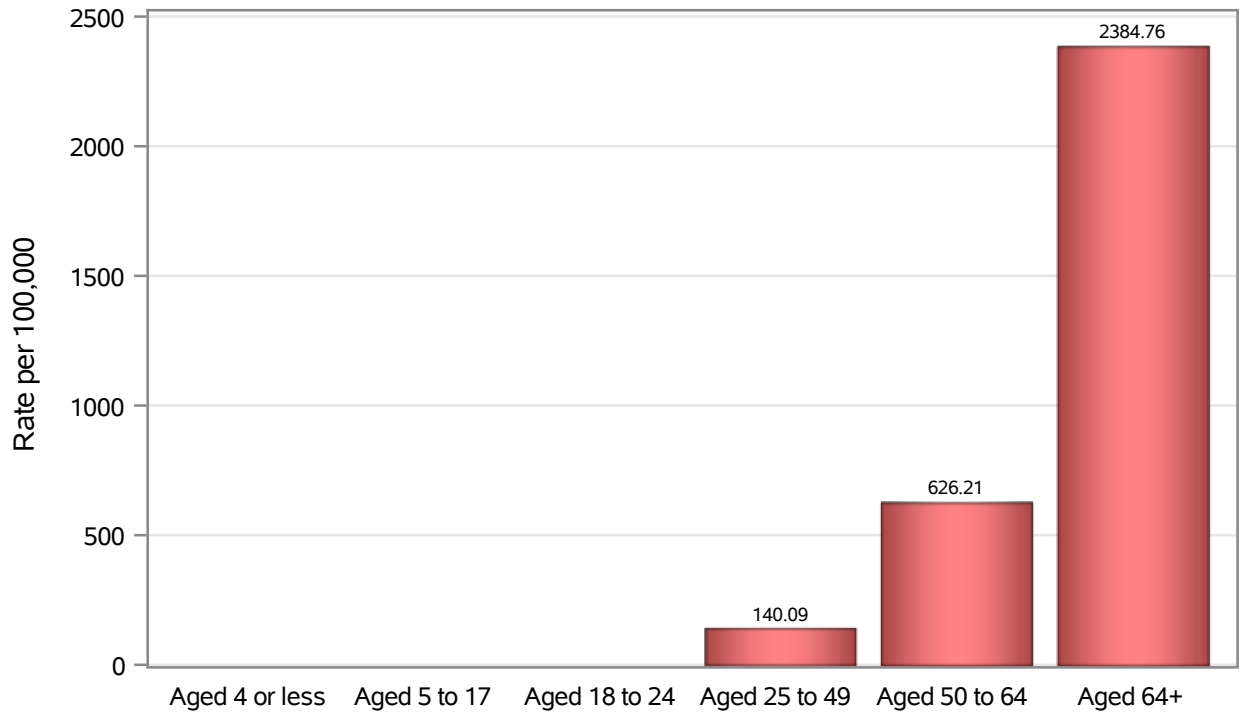


Investigations are ongoing; data are subject to change.

Reporting through 26DEC2022

North Las Vegas zip codes include 89030, 89031, 89032, 89033, 89036, 89081, 89084, 89085, 89086, 89087.

Death Age Rates in North Las Vegas



Investigations are ongoing; data are subject to change.

Reporting through 26DEC2022

North Las Vegas zip codes include 89030, 89031, 89032, 89033, 89036, 89081, 89084, 89085, 89086, 89087.

Table 5: Age and COVID19 in North Las Vegas

Case Status	Age Categories	N	%	Population	Rate per 100,000
Cases	Aged 4 or less	2042	3.0	17,642	11575
	Aged 5 to 17	9577	14.3	49,981	19161
	Aged 18 to 24	8258	12.3	22,914	36039
	Aged 25 to 49	29529	44.1	82,803	35662
	Aged 50 to 64	11664	17.4	36,729	31757
	Aged 64+	5881	8.8	23,734	24779
	Unknown	14	0.0	.	.
Hospitalizations	Aged 4 or less	38	1.2	17,642	215.40
	Aged 5 to 17	43	1.4	49,981	86.03
	Aged 18 to 24	81	2.6	22,914	353.50
	Aged 25 to 49	834	26.9	82,803	1007.2
	Aged 50 to 64	882	28.5	36,729	2401.4
	Aged 64+	1218	39.3	23,734	5131.9
	Deaths	Aged 4 or less	2	0.2	17,642
Aged 5 to 17		1	0.1	49,981	.
Aged 18 to 24		2	0.2	22,914	.
Aged 25 to 49		116	12.6	82,803	140.09
Aged 50 to 64		230	25.1	36,729	626.21
Aged 64+		566	61.7	23,734	2384.8

Note1: Population data source for calculating rate estimates: U.S. Census Bureau, ACS 5-year estimate.

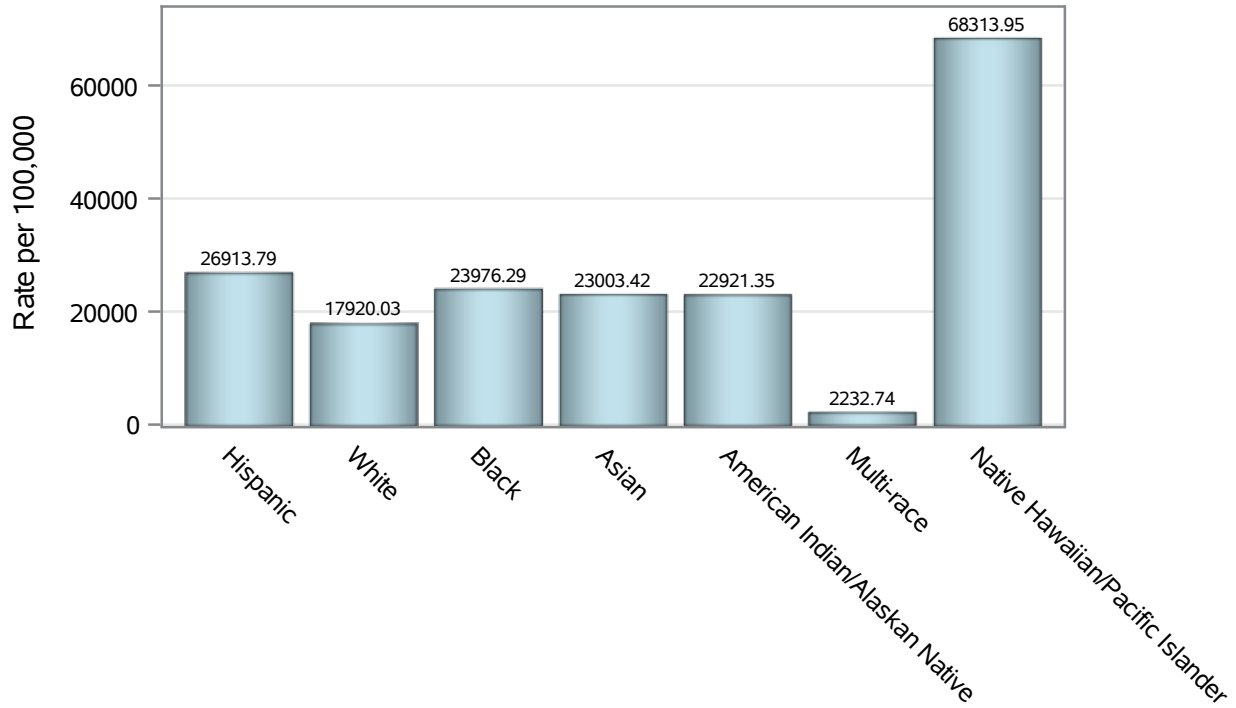
Note2: Rates for categories with fewer than 12 cases are suppressed due to high relative standard error.

Note3: Hospitalizations are regardless of deceased status; Deaths are regardless of hospitalization status

**Investigations are ongoing; data are subject to change.
Reporting through 26DEC2022**

North Las Vegas zip codes include 89030, 89031, 89032, 89033, 89036, 89081, 89084, 89085, 89086, 89087.

Case Race/Ethnicity Rates in North Las Vegas

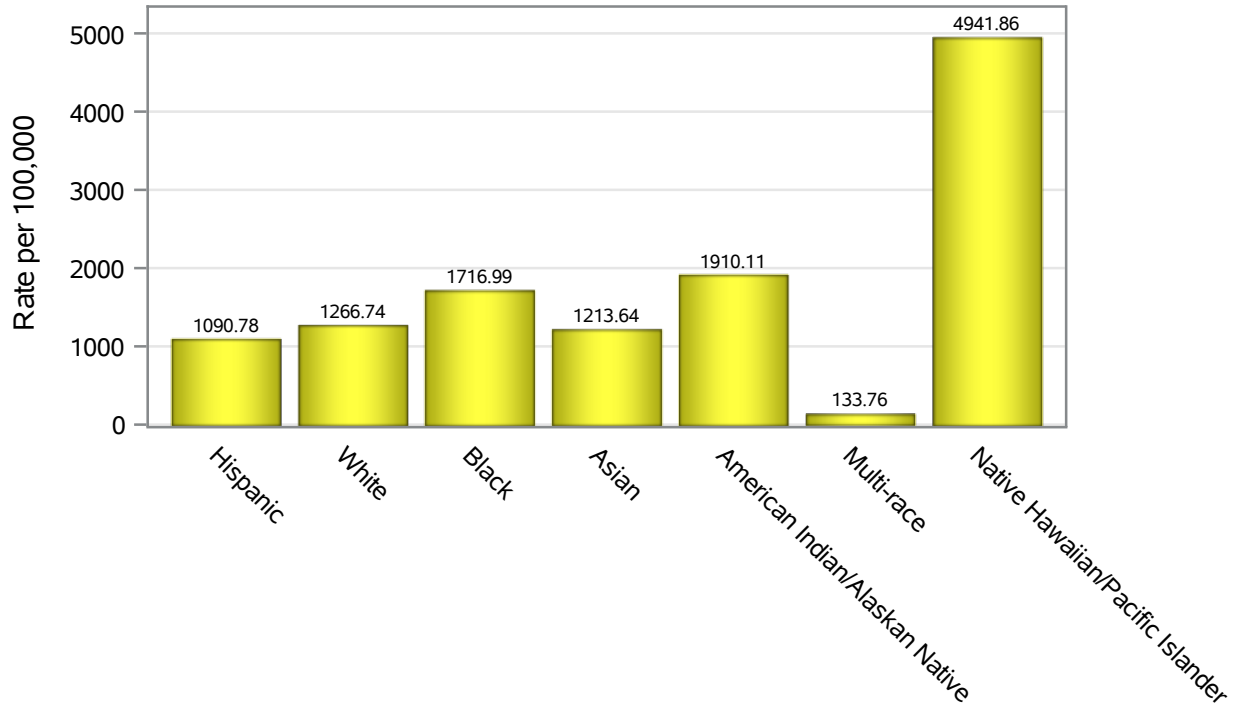


Investigations are ongoing; data are subject to change.

Reporting through 26DEC2022

North Las Vegas zip codes include 89030, 89031, 89032, 89033, 89036, 89081, 89084, 89085, 89086, 89087.

Hospitalization Race/Ethnicity Rates in North Las Vegas

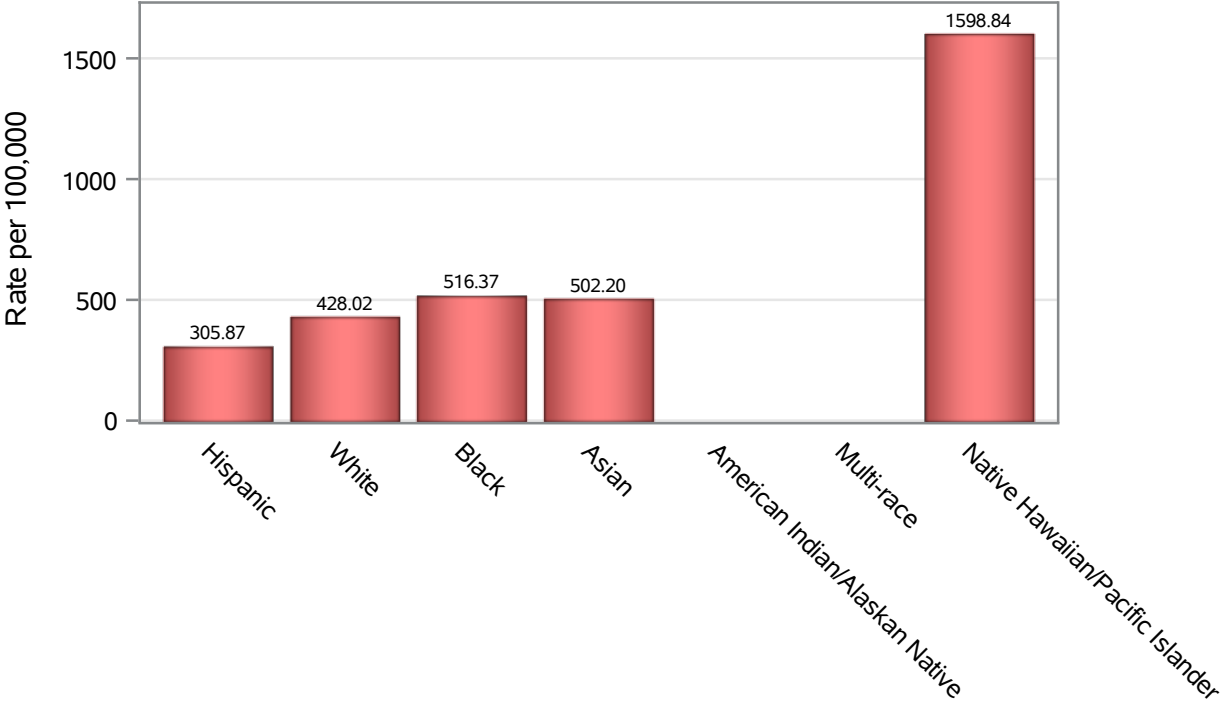


Investigations are ongoing; data are subject to change.

Reporting through 26DEC2022

North Las Vegas zip codes include 89030, 89031, 89032, 89033, 89036, 89081, 89084, 89085, 89086, 89087.

Death Race/Ethnicity Rates in North Las Vegas



Investigations are ongoing; data are subject to change.

Reporting through 26DEC2022

North Las Vegas zip codes include 89030, 89031, 89032, 89033, 89036, 89081, 89084, 89085, 89086, 89087.

Table 6: Race/Ethnicity and COVID19 in North Las Vegas

Case Status	Race Ethnicity Categories	N	%	Population	Rate per 100,000
Cases	Hispanic	25957	38.8	96,445	26914
	White	11388	17.0	63,549	17920
	Black	11283	16.8	47,059	23976
	Asian	3298	4.9	14,337	23003
	American Indian/Alaskan Native	204	0.3	890	22921
	Multi-race	217	0.3	9,719	2232.7
	Native Hawaiian/Pacific Islander	940	1.4	1,376	68314
	Unknown	13678	20.4	.	.
Hospitalizations	Hispanic	1052	34.0	96,445	1090.8
	White	805	26.0	63,549	1266.7
	Black	808	26.1	47,059	1717.0
	Asian	174	5.6	14,337	1213.6
	American Indian/Alaskan Native	17	0.5	890	1910.1
	Multi-race	13	0.4	9,719	133.76
	Native Hawaiian/Pacific Islander	68	2.2	1,376	4941.9
	Unknown	159	5.1	.	.
Deaths	Hispanic	295	32.2	96,445	305.87
	White	272	29.7	63,549	428.02
	Black	243	26.5	47,059	516.37
	Asian	72	7.9	14,337	502.20
	American Indian/Alaskan Native	6	0.7	890	.
	Multi-race	7	0.8	9,719	.
	Native Hawaiian/Pacific Islander	22	2.4	1,376	1598.8

Note1: Population data source for calculating rate estimates: U.S. Census Bureau, ACS 5-year estimate.

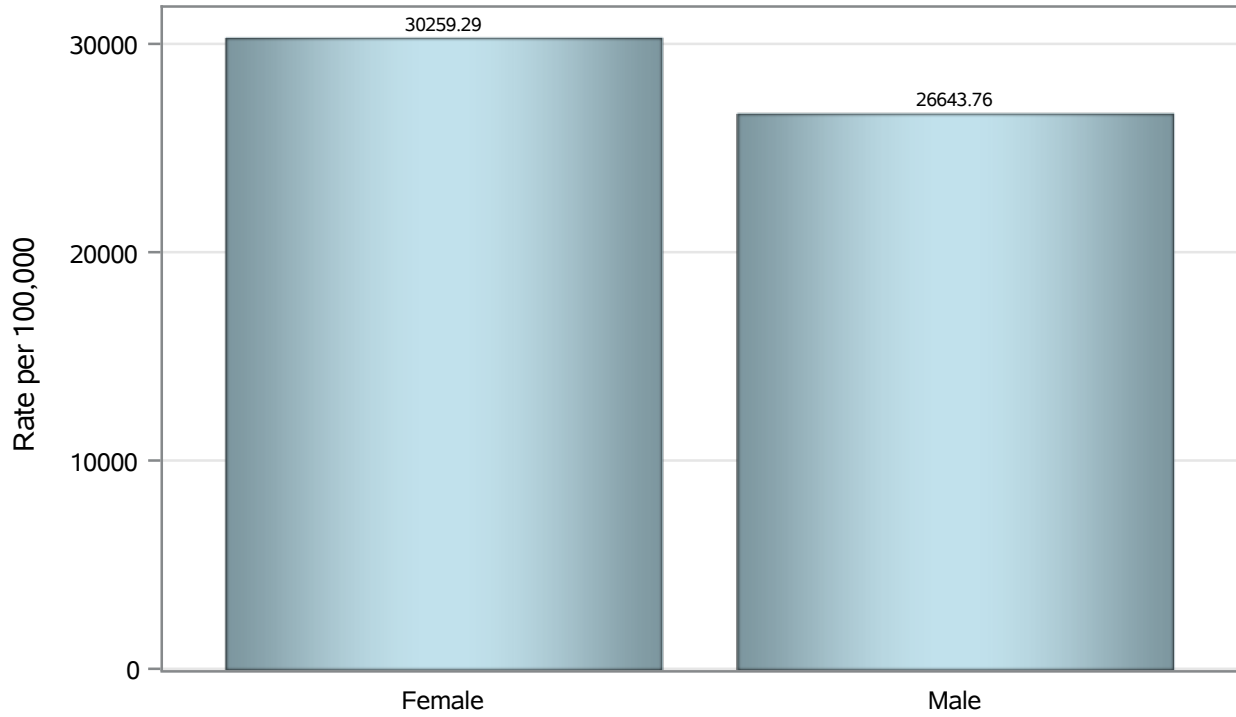
Note2: Rates for categories with fewer than 12 cases are suppressed due to high relative standard error.

Note3: Hospitalizations are regardless of deceased status; Deaths are regardless of hospitalization status

**Investigations are ongoing; data are subject to change.
Reporting through 26DEC2022**

North Las Vegas zip codes include 89030, 89031, 89032, 89033, 89036, 89081, 89084, 89085, 89086, 89087.

Case Birth Sex Rates in North Las Vegas

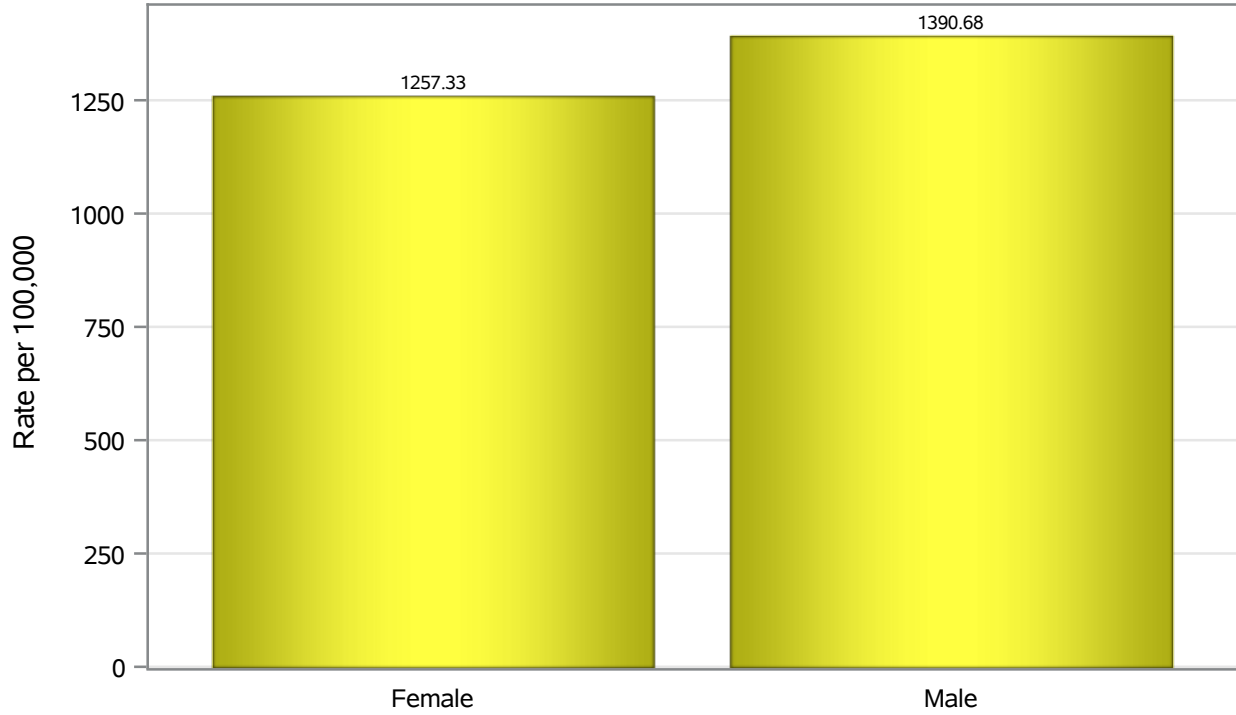


Investigations are ongoing; data are subject to change.

Reporting through 26DEC2022

North Las Vegas zip codes include 89030, 89031, 89032, 89033, 89036, 89081, 89084, 89085, 89086, 89087.

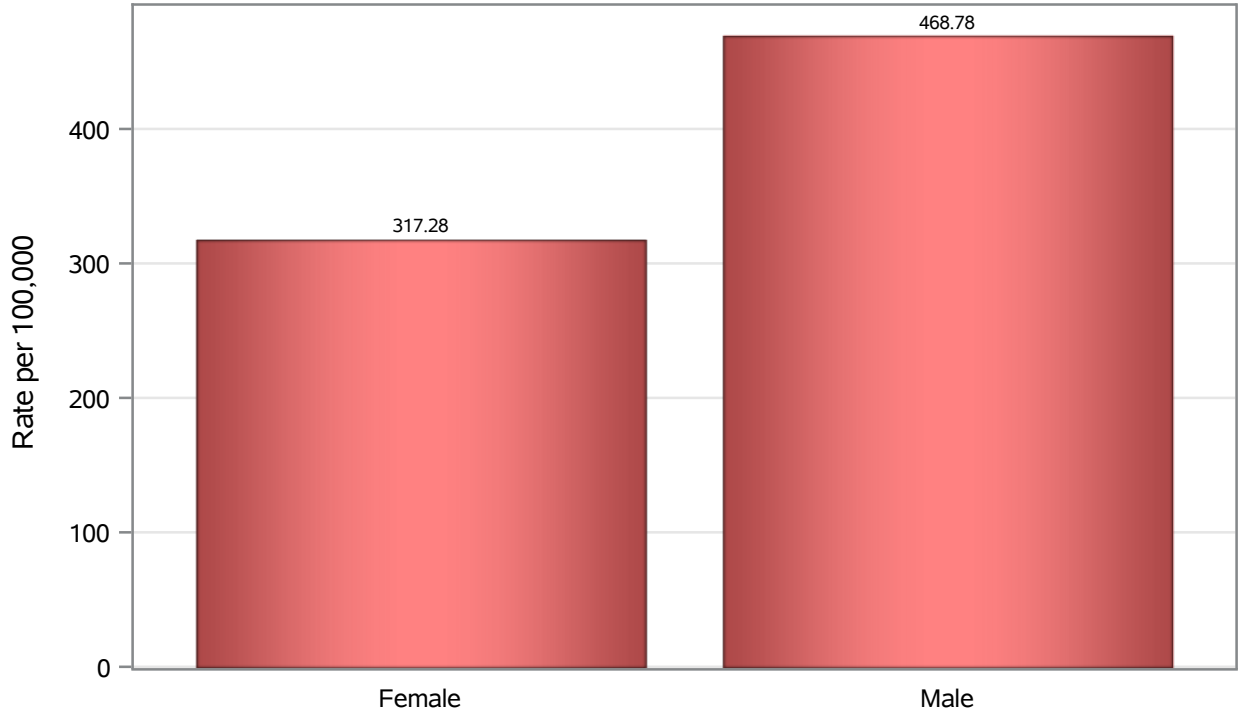
Hospitalization Birth Sex Rates in North Las Vegas



Investigations are ongoing; data are subject to change.
Reporting through 26DEC2022

North Las Vegas zip codes include 89030, 89031, 89032, 89033, 89036, 89081, 89084, 89085, 89086, 89087.

Death Birth Sex Rates in North Las Vegas



Investigations are ongoing; data are subject to change.

Reporting through 26DEC2022

North Las Vegas zip codes include 89030, 89031, 89032, 89033, 89036, 89081, 89084, 89085, 89086, 89087.

Table 7: Birth Sex and COVID19 in North Las Vegas

Case Status	Birth Sex Categories	N	%	Population	Rate per 100,000
Cases	Female	35955	53.7	118823	30259
	Male	30635	45.7	114980	26644
	Unknown	375	0.6	.	.
Hospitalizations	Female	1494	48.3	118823	1257.3
	Male	1599	51.6	114980	1390.7
	Unknown	3	0.1	.	.
Deaths	Female	377	41.1	118823	317.28
	Male	539	58.8	114980	468.78
	Unknown	1	0.1	.	.

Note1: Population data source for calculating rate estimates: U.S. Census Bureau, ACS 5-year estimate.

Note2: Rates for categories with fewer than 12 cases are suppressed due to high relative standard error.

Note3: Hospitalizations are regardless of deceased status; Deaths are regardless of hospitalization status

**Investigations are ongoing; data are subject to change.
Reporting through 26DEC2022**

North Las Vegas zip codes include 89030, 89031, 89032, 89033, 89036, 89081, 89084, 89085, 89086, 89087.