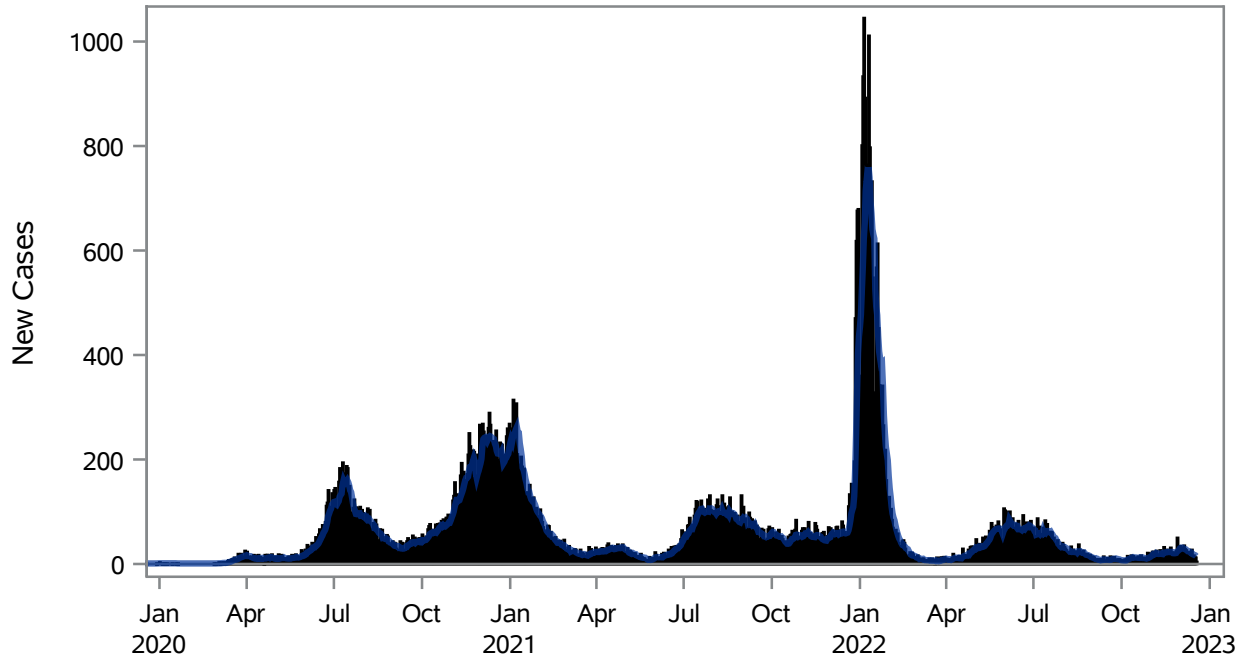


COVID19 Cases for North Las Vegas, 7-Day Moving Average



■ New Cases — 7-Day Moving Average

Investigations are ongoing; data are subject to change.

Reporting through 19DEC2022

North Las Vegas zip codes include 89030, 89031, 89032, 89033, 89036, 89081, 89084, 89085, 89086, 89087.

Table 1: New COVID19 Cases and 7-Day Moving Average in North Las Vegas, Previous Two Weeks

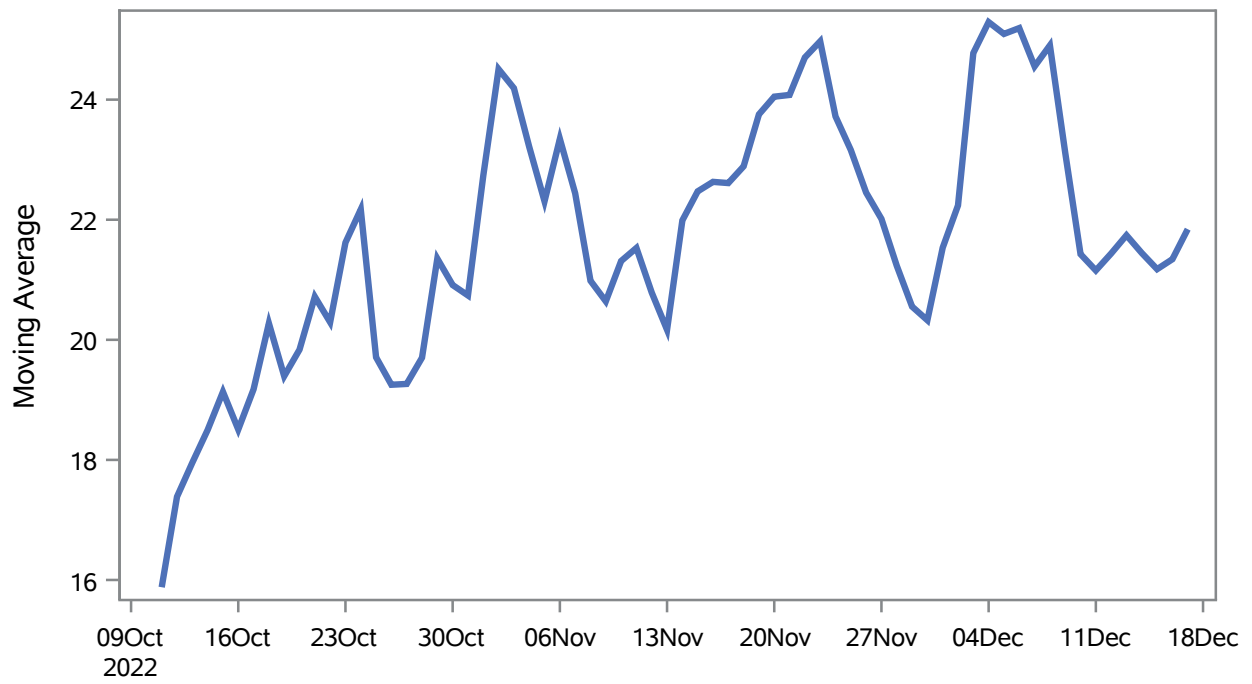
Date (Daily)	New Cases	7-Day Moving Average
06DEC2022	28	28.43
07DEC2022	26	28.00
08DEC2022	23	26.43
09DEC2022	18	24.57
10DEC2022	17	24.43
11DEC2022	17	23.43
12DEC2022	23	21.71
13DEC2022	27	21.57
14DEC2022	8	19.00
15DEC2022	16	18.00
16DEC2022	13	17.29
17DEC2022	12	16.57

Note1: Event Date is calculated as follows based on completed information:
1) Disease onset date 2) Disease diagnosis date 3) Lab result collection date 4) Report date to SNHD.

**Investigations are ongoing; data are subject to change.
Reporting through 19DEC2022**

North Las Vegas zip codes include 89030, 89031, 89032, 89033, 89036, 89081, 89084, 89085, 89086, 89087.

Percent of People Receiving COVID-19 Viral Tests Who Have Positive Results in North Las Vegas



Investigations are ongoing; data are subject to change.

Reporting through 19DEC2022

North Las Vegas zip codes include 89030, 89031, 89032, 89033, 89036, 89081, 89084, 89085, 89086, 89087.

Table 2: Percent of People Receiving COVID-19 Viral Tests Who Have Positive Results in North Las Vegas

Collection Date	Positive	Negative	Equivocal	Total	% Positivity	7-Day Moving Average
03DEC2022	47	84		131	35.88	24.8
04DEC2022	35	102		137	25.55	25.3
05DEC2022	50	182		232	21.55	25.1
06DEC2022	41	184	1	226	18.14	25.2
07DEC2022	62	273		335	18.51	24.6
08DEC2022	46	129		175	26.29	24.9
09DEC2022	38	201		239	15.90	23.1
10DEC2022	38	120		158	24.05	21.4
11DEC2022	35	113		148	23.65	21.2
12DEC2022	44	143		187	23.53	21.4
13DEC2022	46	178	3	227	20.26	21.7
14DEC2022	24	122		146	16.44	21.4
15DEC2022	41	127		168	24.40	21.2
16DEC2022	36	175		211	17.06	21.3
17DEC2022	27	71		98	27.55	21.8

Note: Testing Data includes a 3 day delay

**Investigations are ongoing; data are subject to change.
Reporting through 19DEC2022**

North Las Vegas zip codes include 89030, 89031, 89032, 89033, 89036, 89081, 89084, 89085, 89086, 89087.

COVID19 Hospitalizations for North Las Vegas, 7-Day Moving Average

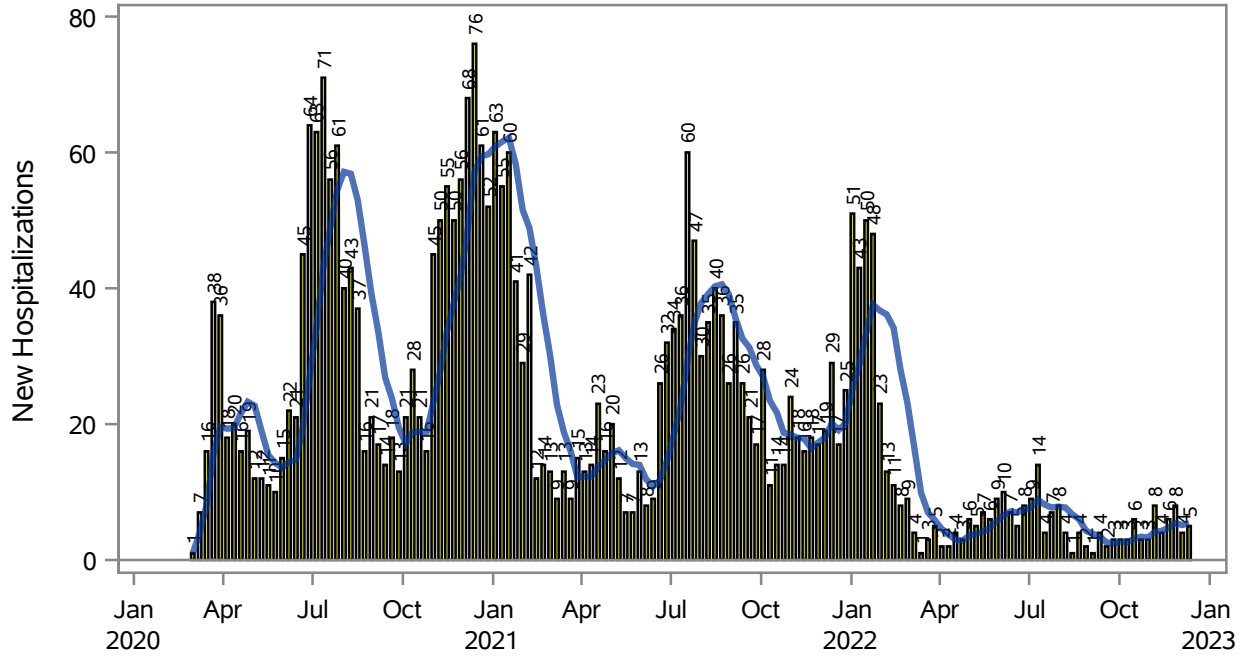


Table 3: New COVID19-Related Hospitalizations and 7-Day Moving Average in North Las Vegas, previous month

Week	Hospitalizations	7-Day Moving Average
20NOV2022	6	4.71
27NOV2022	8	5.43
04DEC2022	4	5.14
11DEC2022	5	5.43

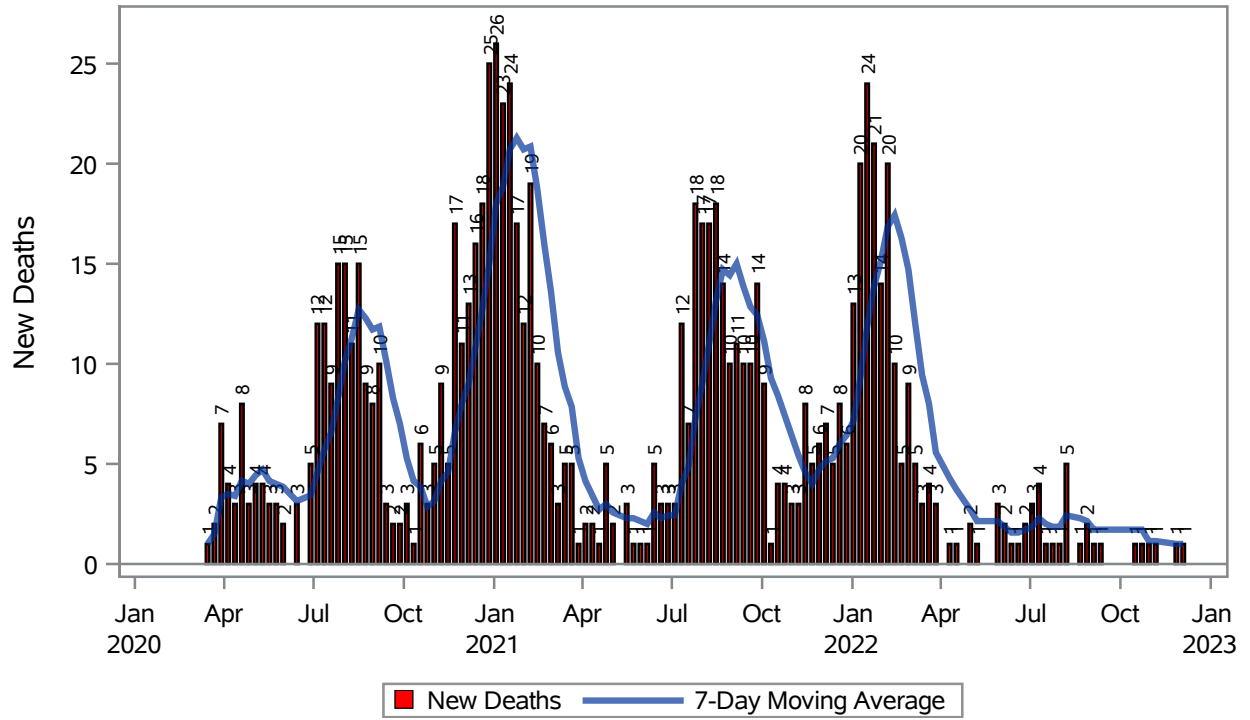
Note1: Admission Date is calculated as follows based on completed information:
A) COVID19 Case is hospitalized B) COVID19 Case has a hospital admission date.

If admission date is missing, then the following is substituted temporarily, in order:
1) Disease onset date 2) Disease diagnosis date 3) Lab result collection date 4) Report date to SNHD.

**Investigations are ongoing; data are subject to change.
Reporting through 19DEC2022**

North Las Vegas zip codes include 89030, 89031, 89032, 89033, 89036, 89081, 89084, 89085, 89086, 89087.

COVID19 Deaths for North Las Vegas, 7-Day Moving Average



Investigations are ongoing; data are subject to change.

Reporting through 19DEC2022

North Las Vegas zip codes include 89030, 89031, 89032, 89033, 89036, 89081, 89084, 89085, 89086, 89087.

Table 4: New COVID19-Related Deaths and 7-Day Moving Average in North Las Vegas, Previous Month

Week	Deaths	7-Day Moving Average
27NOV2022	1	1.00
04DEC2022	1	1.00

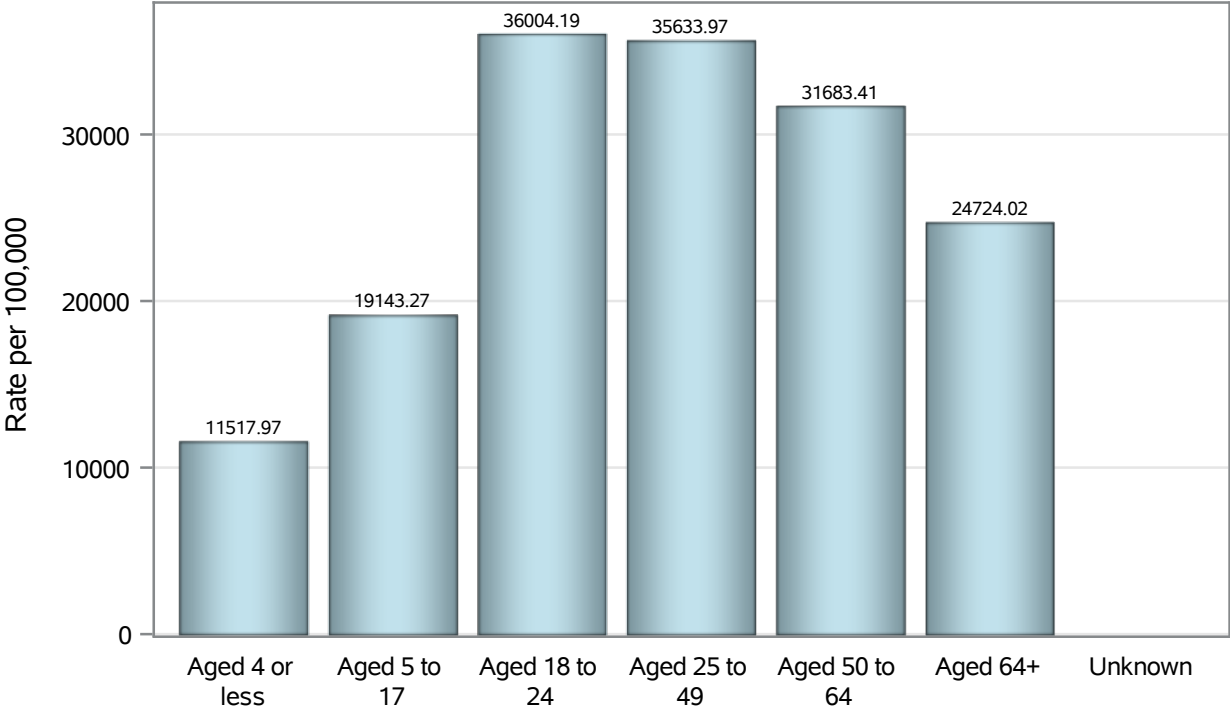
Note1: Date of Death is calculated as follows based on completed information:
A) COVID19 Case is reported as deceased B) COVID19 Case has a reported date of death.

If date of death is missing, then the following is substituted temporarily, in order:
1) Disease onset date 2) Disease diagnosis date
3) Lab result collection date 4) Report date to SNHD.

**Investigations are ongoing; data are subject to change.
Reporting through 19DEC2022**

North Las Vegas zip codes include 89030, 89031, 89032, 89033, 89036, 89081, 89084, 89085, 89086, 89087.

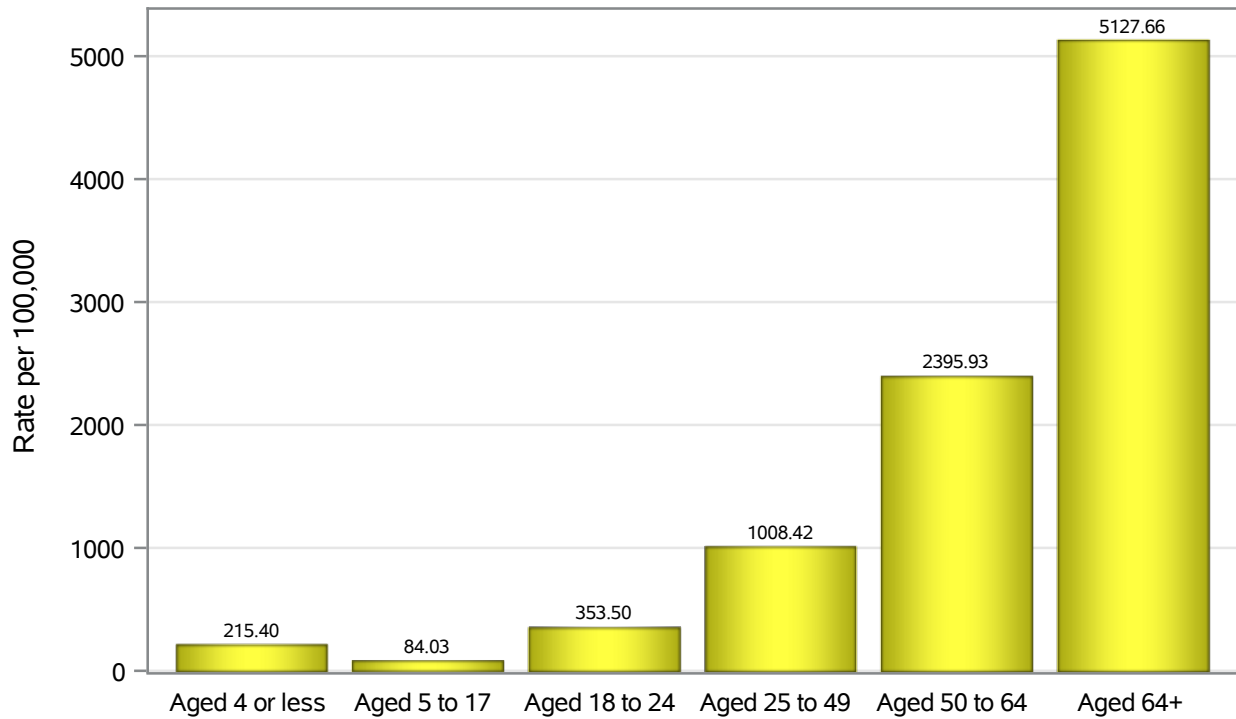
Case Age Rates in North Las Vegas



Investigations are ongoing; data are subject to change.
Reporting through 19DEC2022

North Las Vegas zip codes include 89030, 89031, 89032, 89033, 89036, 89081, 89084, 89085, 89086, 89087.

Hospitalization Age Rates in North Las Vegas

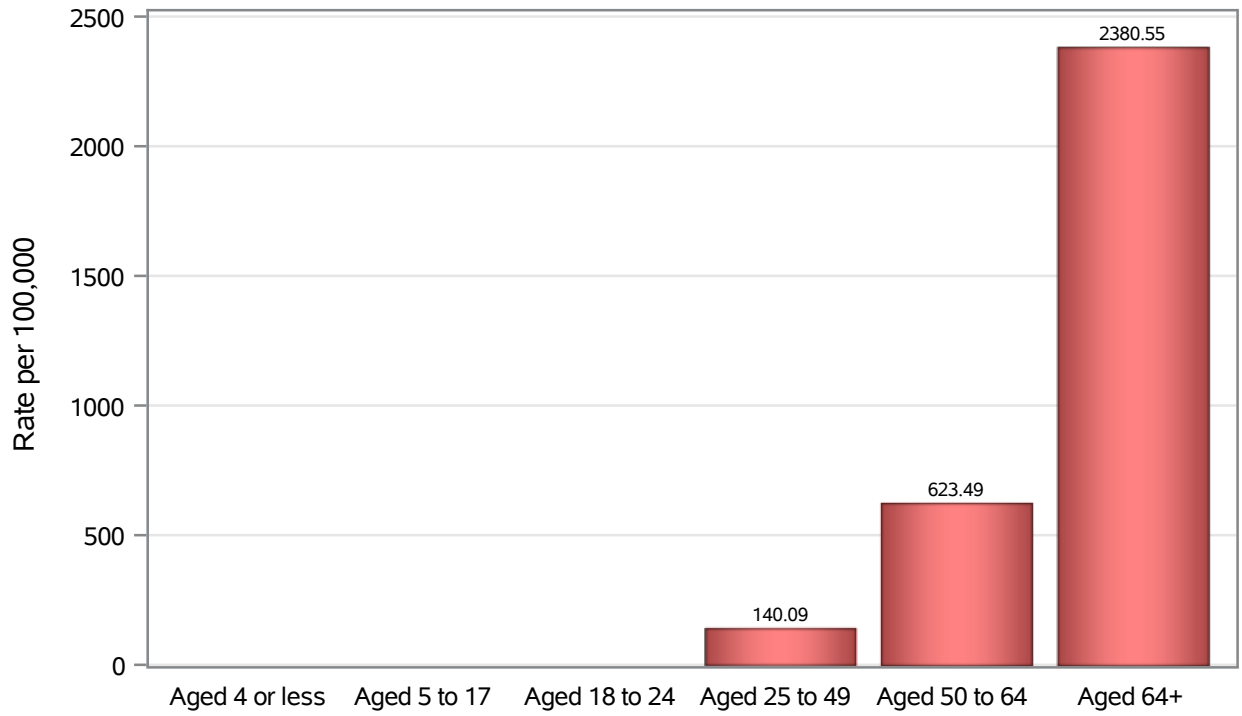


Investigations are ongoing; data are subject to change.

Reporting through 19DEC2022

North Las Vegas zip codes include 89030, 89031, 89032, 89033, 89036, 89081, 89084, 89085, 89086, 89087.

Death Age Rates in North Las Vegas



Investigations are ongoing; data are subject to change.

Reporting through 19DEC2022

North Las Vegas zip codes include 89030, 89031, 89032, 89033, 89036, 89081, 89084, 89085, 89086, 89087.

Table 5: Age and COVID19 in North Las Vegas

Case Status	Age Categories	N	%	Population	Rate per 100,000
Cases	Aged 4 or less	2032	3.0	17,642	11518
	Aged 5 to 17	9568	14.3	49,981	19143
	Aged 18 to 24	8250	12.3	22,914	36004
	Aged 25 to 49	29506	44.1	82,803	35634
	Aged 50 to 64	11637	17.4	36,729	31683
	Aged 64+	5868	8.8	23,734	24724
	Unknown	14	0.0	.	.
Hospitalizations	Aged 4 or less	38	1.2	17,642	215.40
	Aged 5 to 17	42	1.4	49,981	84.03
	Aged 18 to 24	81	2.6	22,914	353.50
	Aged 25 to 49	835	27.0	82,803	1008.4
	Aged 50 to 64	880	28.5	36,729	2395.9
	Aged 64+	1217	39.3	23,734	5127.7
	Deaths	Aged 4 or less	2	0.2	17,642
Aged 5 to 17		1	0.1	49,981	.
Aged 18 to 24		2	0.2	22,914	.
Aged 25 to 49		116	12.7	82,803	140.09
Aged 50 to 64		229	25.0	36,729	623.49
Aged 64+		565	61.7	23,734	2380.6

Note1: Population data source for calculating rate estimates: U.S. Census Bureau, ACS 5-year estimate.

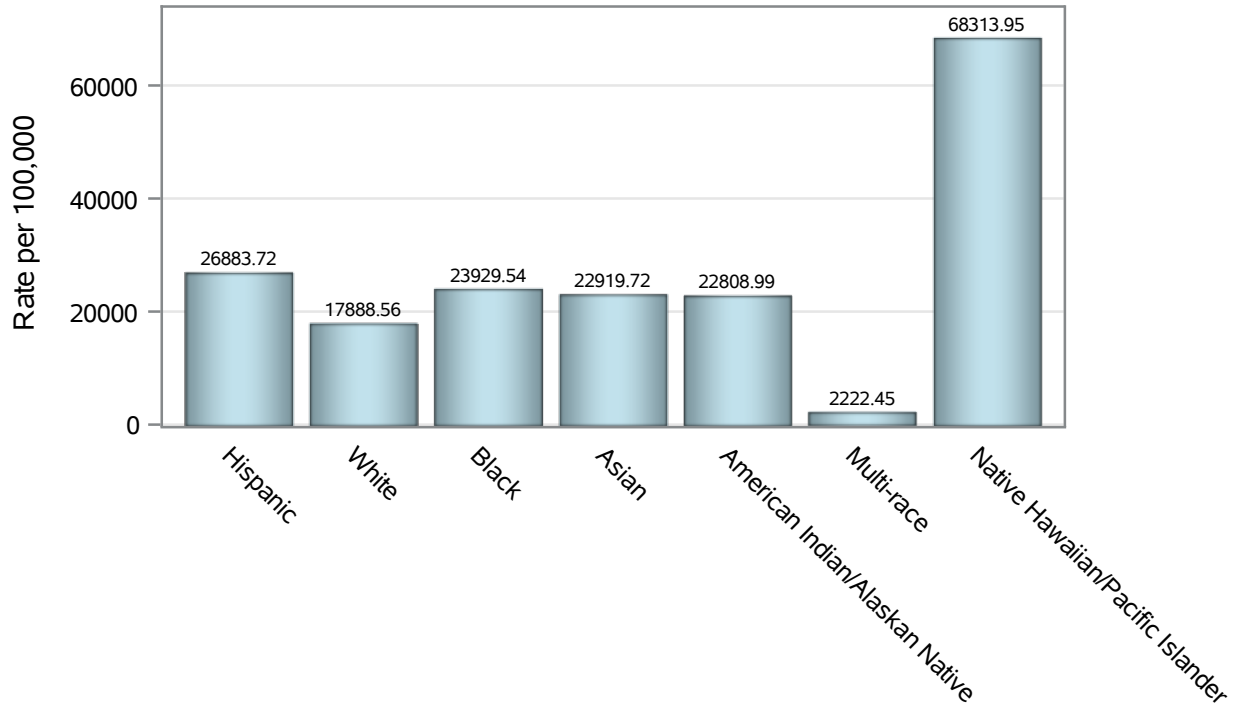
Note2: Rates for categories with fewer than 12 cases are suppressed due to high relative standard error.

Note3: Hospitalizations are regardless of deceased status; Deaths are regardless of hospitalization status

**Investigations are ongoing; data are subject to change.
Reporting through 19DEC2022**

North Las Vegas zip codes include 89030, 89031, 89032, 89033, 89036, 89081, 89084, 89085, 89086, 89087.

Case Race/Ethnicity Rates in North Las Vegas

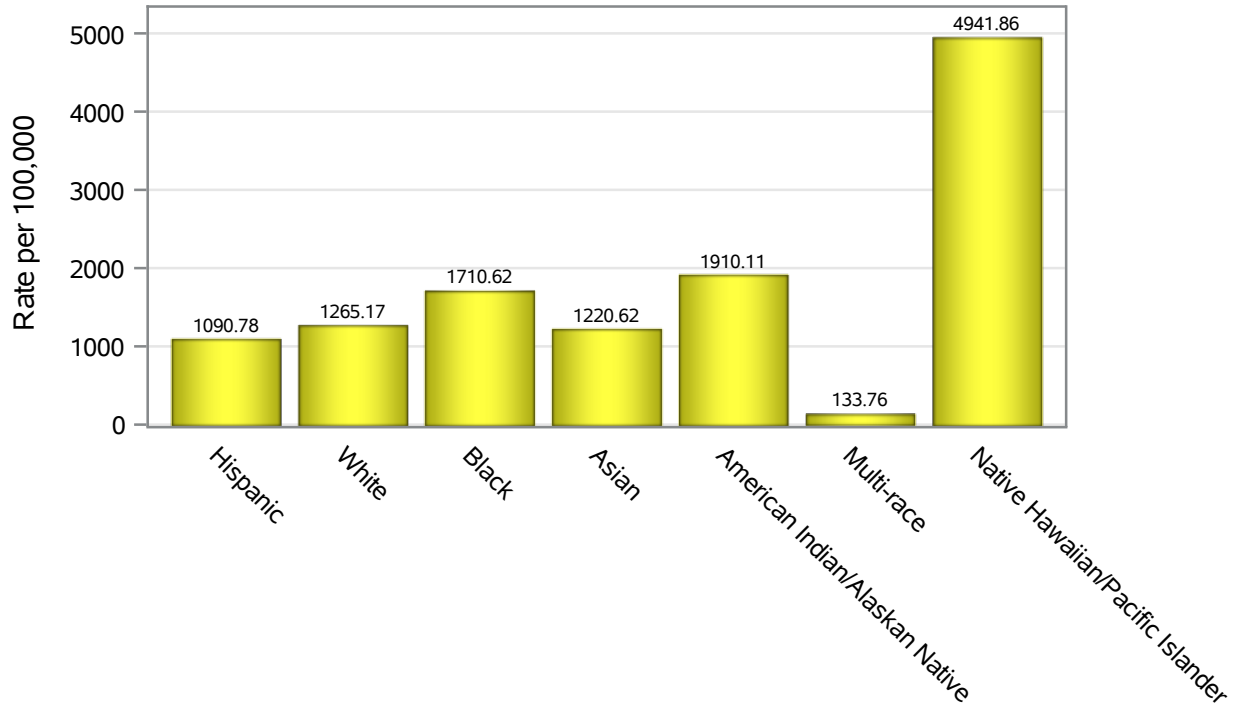


Investigations are ongoing; data are subject to change.

Reporting through 19DEC2022

North Las Vegas zip codes include 89030, 89031, 89032, 89033, 89036, 89081, 89084, 89085, 89086, 89087.

Hospitalization Race/Ethnicity Rates in North Las Vegas

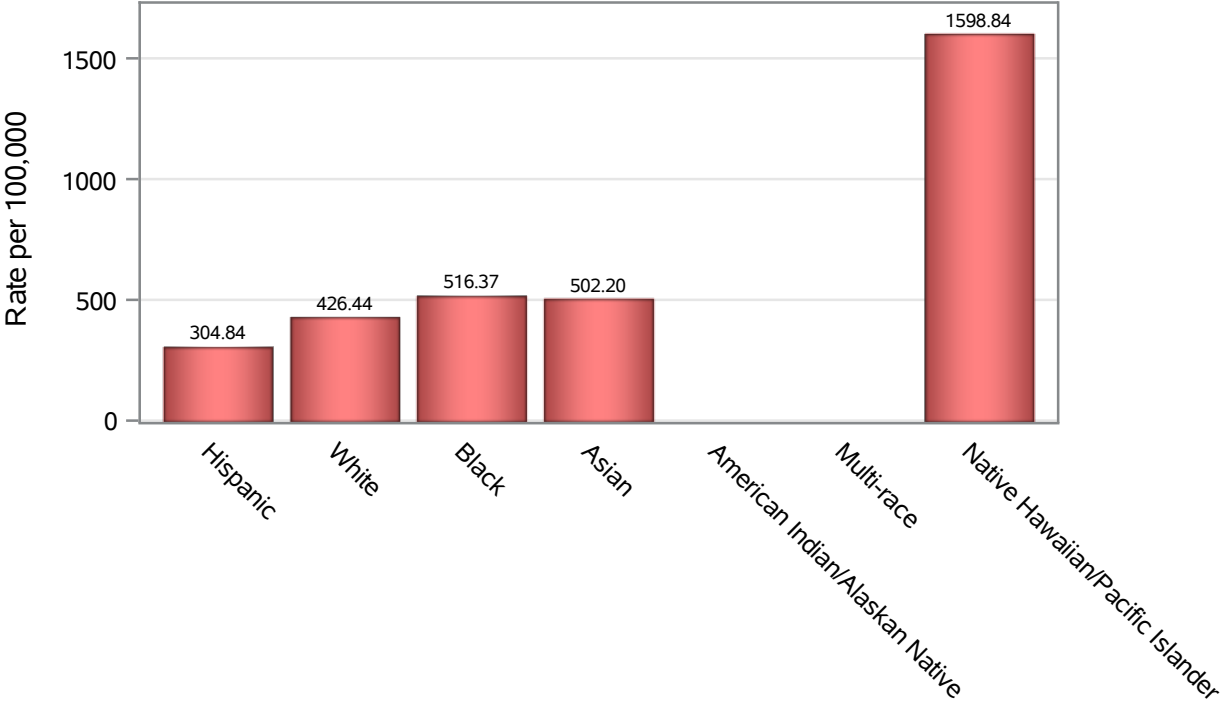


Investigations are ongoing; data are subject to change.

Reporting through 19DEC2022

North Las Vegas zip codes include 89030, 89031, 89032, 89033, 89036, 89081, 89084, 89085, 89086, 89087.

Death Race/Ethnicity Rates in North Las Vegas



Investigations are ongoing; data are subject to change.

Reporting through 19DEC2022

North Las Vegas zip codes include 89030, 89031, 89032, 89033, 89036, 89081, 89084, 89085, 89086, 89087.

Table 6: Race/Ethnicity and COVID19 in North Las Vegas

Case Status	Race Ethnicity Categories	N	%	Population	Rate per 100,000
Cases	Hispanic	25928	38.8	96,445	26884
	White	11368	17.0	63,549	17889
	Black	11261	16.8	47,059	23930
	Asian	3286	4.9	14,337	22920
	American Indian/Alaskan Native	203	0.3	890	22809
	Multi-race	216	0.3	9,719	2222.5
	Native Hawaiian/Pacific Islander	940	1.4	1,376	68314
	Unknown	13673	20.4	.	.
Hospitalizations	Hispanic	1052	34.0	96,445	1090.8
	White	804	26.0	63,549	1265.2
	Black	805	26.0	47,059	1710.6
	Asian	175	5.7	14,337	1220.6
	American Indian/Alaskan Native	17	0.5	890	1910.1
	Multi-race	13	0.4	9,719	133.76
	Native Hawaiian/Pacific Islander	68	2.2	1,376	4941.9
	Unknown	159	5.1	.	.
Deaths	Hispanic	294	32.1	96,445	304.84
	White	271	29.6	63,549	426.44
	Black	243	26.6	47,059	516.37
	Asian	72	7.9	14,337	502.20
	American Indian/Alaskan Native	6	0.7	890	.
	Multi-race	7	0.8	9,719	.
	Native Hawaiian/Pacific Islander	22	2.4	1,376	1598.8

Note1: Population data source for calculating rate estimates: U.S. Census Bureau, ACS 5-year estimate.

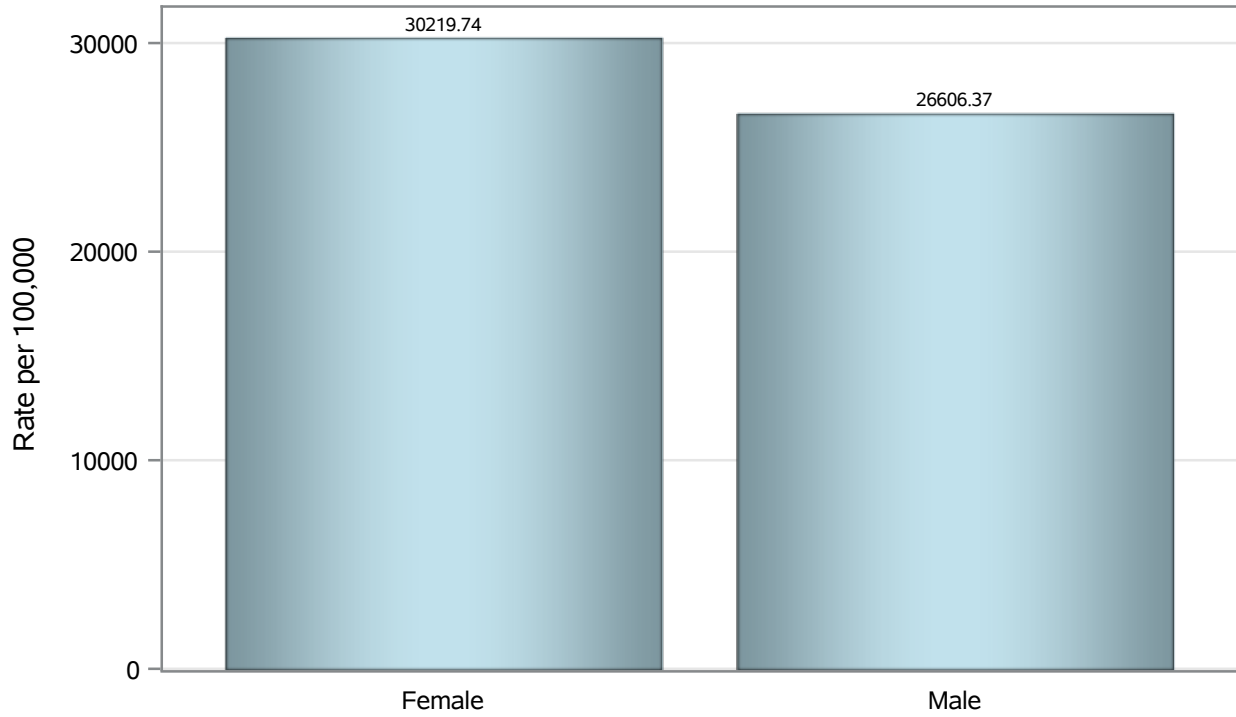
Note2: Rates for categories with fewer than 12 cases are suppressed due to high relative standard error.

Note3: Hospitalizations are regardless of deceased status; Deaths are regardless of hospitalization status

**Investigations are ongoing; data are subject to change.
Reporting through 19DEC2022**

North Las Vegas zip codes include 89030, 89031, 89032, 89033, 89036, 89081, 89084, 89085, 89086, 89087.

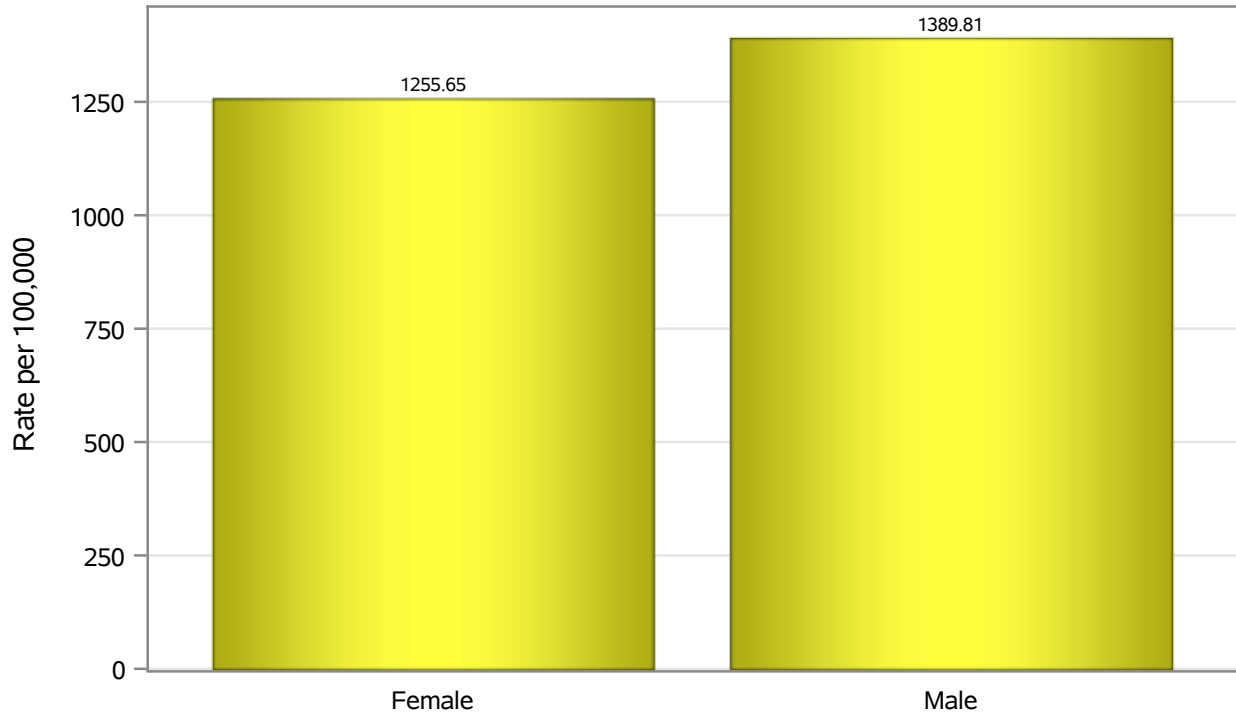
Case Birth Sex Rates in North Las Vegas



Investigations are ongoing; data are subject to change.
Reporting through 19DEC2022

North Las Vegas zip codes include 89030, 89031, 89032, 89033, 89036, 89081, 89084, 89085, 89086, 89087.

Hospitalization Birth Sex Rates in North Las Vegas

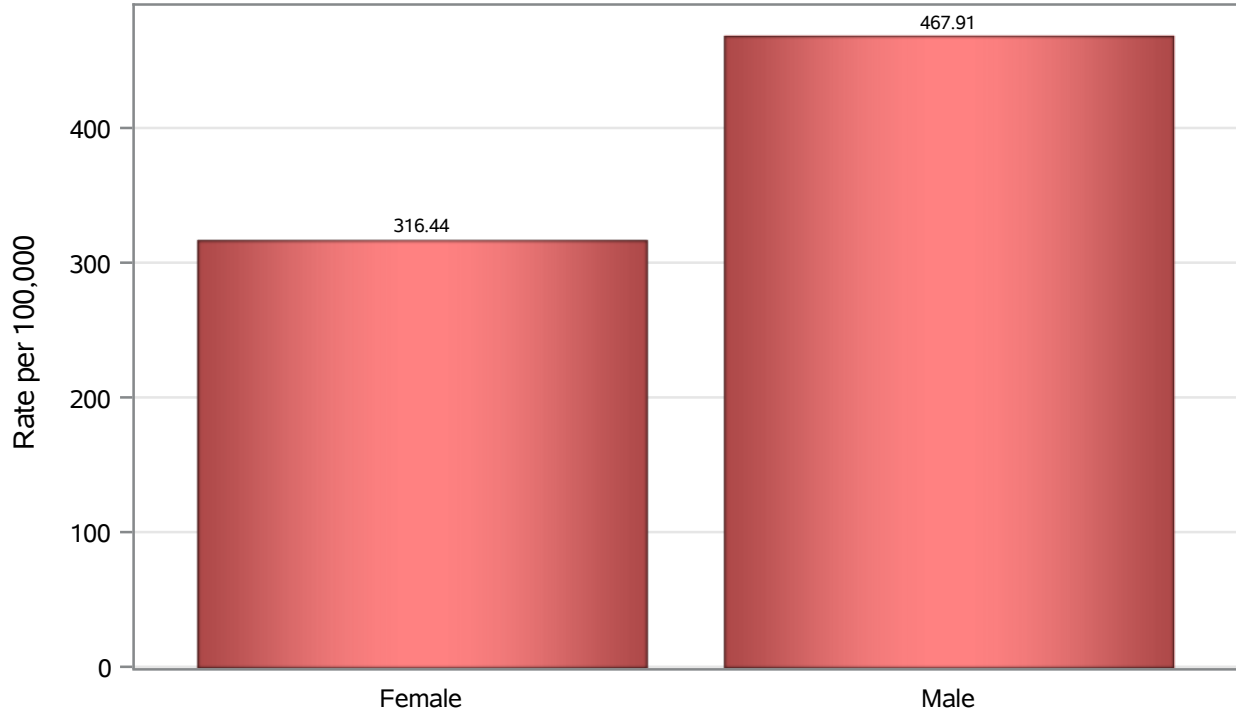


Investigations are ongoing; data are subject to change.

Reporting through 19DEC2022

North Las Vegas zip codes include 89030, 89031, 89032, 89033, 89036, 89081, 89084, 89085, 89086, 89087.

Death Birth Sex Rates in North Las Vegas



Investigations are ongoing; data are subject to change.

Reporting through 19DEC2022

North Las Vegas zip codes include 89030, 89031, 89032, 89033, 89036, 89081, 89084, 89085, 89086, 89087.

Table 7: Birth Sex and COVID19 in North Las Vegas

Case Status	Birth Sex Categories	N	%	Population	Rate per 100,000
Cases	Female	35908	53.7	118823	30220
	Male	30592	45.7	114980	26606
	Unknown	375	0.6	.	.
Hospitalizations	Female	1492	48.2	118823	1255.6
	Male	1598	51.7	114980	1389.8
	Unknown	3	0.1	.	.
Deaths	Female	376	41.1	118823	316.44
	Male	538	58.8	114980	467.91
	Unknown	1	0.1	.	.

Note1: Population data source for calculating rate estimates: U.S. Census Bureau, ACS 5-year estimate.

Note2: Rates for categories with fewer than 12 cases are suppressed due to high relative standard error.

Note3: Hospitalizations are regardless of deceased status; Deaths are regardless of hospitalization status

**Investigations are ongoing; data are subject to change.
Reporting through 19DEC2022**

North Las Vegas zip codes include 89030, 89031, 89032, 89033, 89036, 89081, 89084, 89085, 89086, 89087.