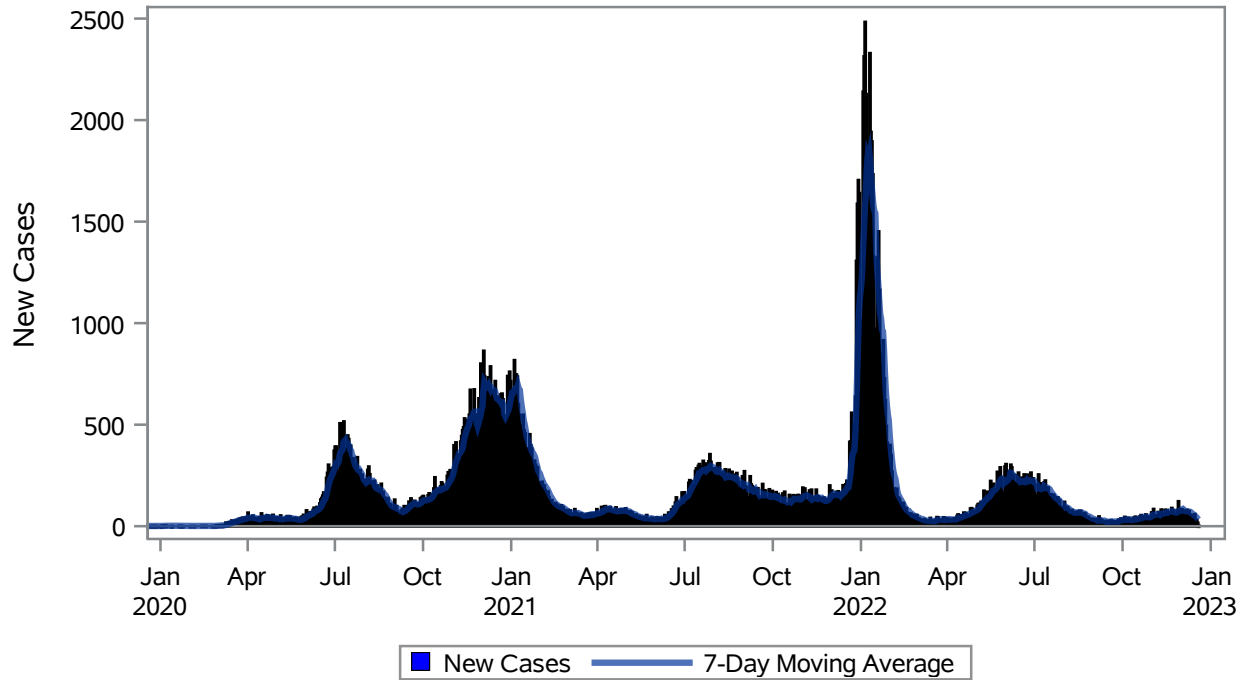


### COVID19 Cases for Las Vegas, 7-Day Moving Average



Investigations are ongoing; data are subject to change.

Reporting through 19DEC2022

Las Vegas zip codes include 89101, 89102, 89104, 89106, 89108, 89109, 89110, 89117, 89129, 89130, 89131, 89143, 89146, 89149, 89166, 89145, 89144, 89134, 89107, 89128, 89138.

**Table 1: New COVID19 Cases and 7-Day Moving Average in Las Vegas, Previous Two Weeks**

Date (Daily)	New Cases	7-Day Moving Average
06DEC2022	74	73.29
07DEC2022	80	73.43
08DEC2022	70	73.43
09DEC2022	75	72.14
10DEC2022	56	69.43
11DEC2022	56	69.71
12DEC2022	49	65.71
13DEC2022	43	61.29
14DEC2022	46	56.43
15DEC2022	59	54.86
16DEC2022	32	48.71
17DEC2022	30	45.00

---

Note1: Event Date is calculated as follows based on completed information:  
1) Disease onset date 2) Disease diagnosis date 3) Lab result collection date 4) Report date to SNHD.

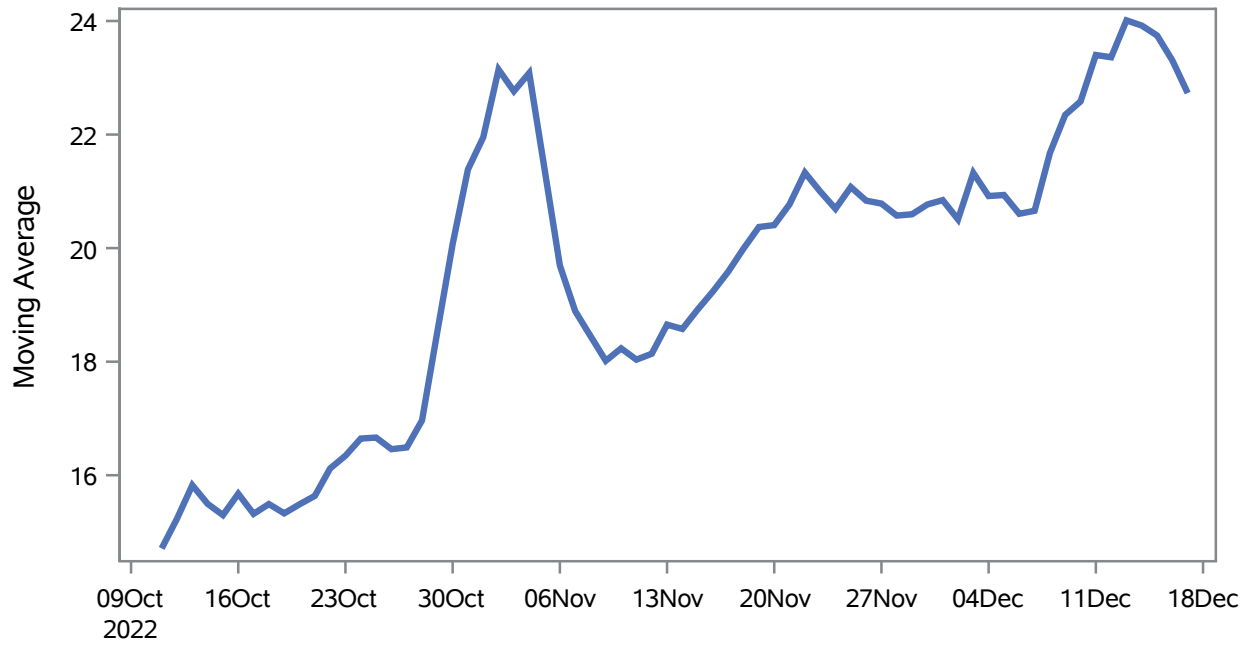
---

**Investigations are ongoing; data are subject to change.**

**Reporting through 19DEC2022**

**Las Vegas zip codes include 89101, 89102, 89104, 89106, 89108, 89109, 89110, 89117, 89129, 89130, 89131, 89143, 89146, 89149, 89166, 89145, 89144, 89134, 89107, 89128, 89138.**

### Percent of People Receiving COVID-19 Viral Tests Who Have Positive Results in Las Vegas



Investigations are ongoing; data are subject to change.  
Reporting through 19DEC2022

Las Vegas zip codes include 89101, 89102, 89104, 89106, 89108, 89109, 89110, 89117, 89129, 89130, 89131, 89143, 89146, 89149, 89166, 89145, 89144, 89134, 89107, 89128, 89138.

**Table 2: Percent of People Receiving COVID-19 Viral Tests Who Have Positive Results in Las Vegas**

Collection Date	Positive	Negative	Equivocal	Total	% Positivity	7-Day Moving Average
03DEC2022	218	626		844	25.83	21.3
04DEC2022	173	688		861	20.09	20.9
05DEC2022	296	1247	2	1545	19.16	20.9
06DEC2022	262	1139	3	1404	18.66	20.6
07DEC2022	330	1269	2	1601	20.61	20.7
08DEC2022	343	1047	1	1391	24.66	21.7
09DEC2022	315	834		1149	27.42	22.3
10DEC2022	249	656	1	906	27.48	22.6
11DEC2022	220	632		852	25.82	23.4
12DEC2022	268	1147	5	1420	18.87	23.4
13DEC2022	263	869	1	1133	23.21	24.0
14DEC2022	281	1124	2	1407	19.97	23.9
15DEC2022	292	953	1	1246	23.43	23.7
16DEC2022	235	731		966	24.33	23.3
17DEC2022	165	538		703	23.47	22.7

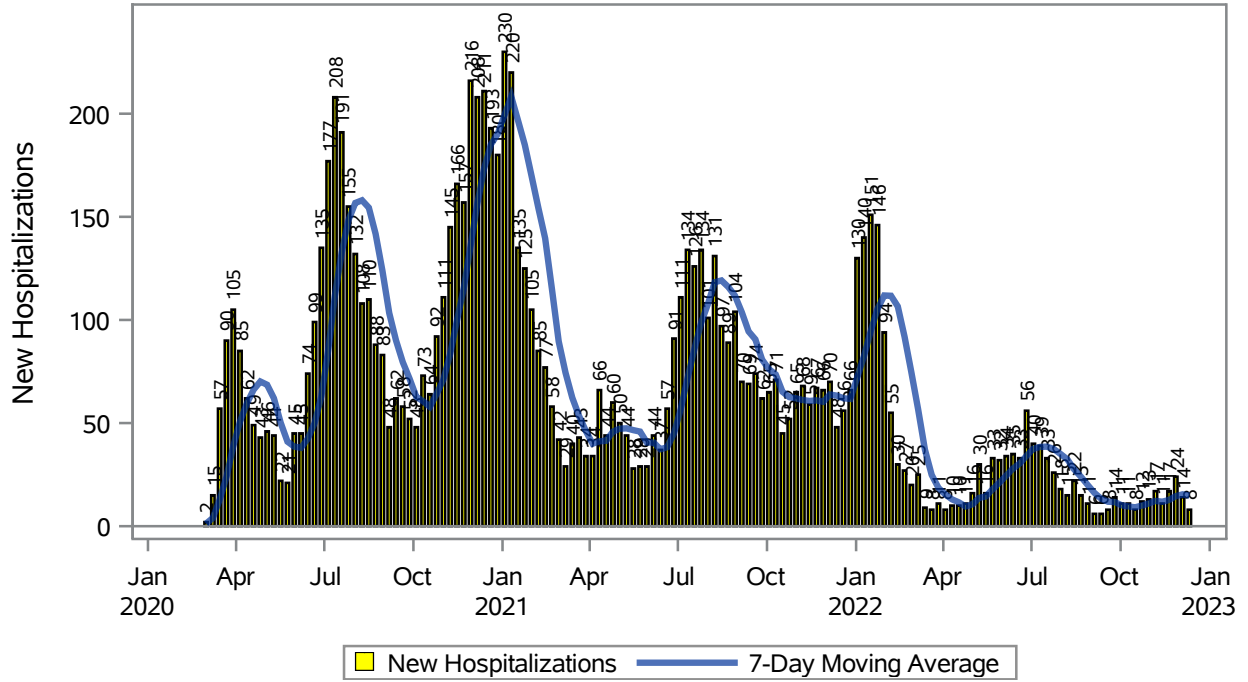
Note: Testing Data includes a 3 day delay

**Investigations are ongoing; data are subject to change.**

**Reporting through 19DEC2022**

**Las Vegas zip codes include 89101, 89102, 89104, 89106, 89108, 89109, 89110, 89117, 89129, 89130, 89131, 89143, 89146, 89149, 89166, 89145, 89144, 89134, 89107, 89128, 89138.**

## COVID19 Hospitalizations for Las Vegas, 7-Day Moving Average



Investigations are ongoing; data are subject to change.

Reporting through 19DEC2022

Las Vegas zip codes include 89101, 89102, 89104, 89106, 89108, 89109, 89110, 89117, 89129, 89130, 89131, 89143, 89146, 89149, 89166, 89145, 89144, 89134, 89107, 89128, 89138.

**Table 3: New COVID19-Related Hospitalizations and 7-Day Moving Average in Las Vegas, previous month**

Week	Hospitalizations	7-Day Moving Average
20NOV2022	17	12.7
27NOV2022	24	14.6
04DEC2022	14	15.4
11DEC2022	8	14.9

---

Note1: Admission Date is calculated as follows based on completed information:  
A) COVID19 Case is hospitalized B) COVID19 Case has a hospital admission date.

If admission date is missing, then the following is substituted temporarily, in order:  
1) Disease onset date 2) Disease diagnosis date 3) Lab result collection date 4) Report date to SNHD.

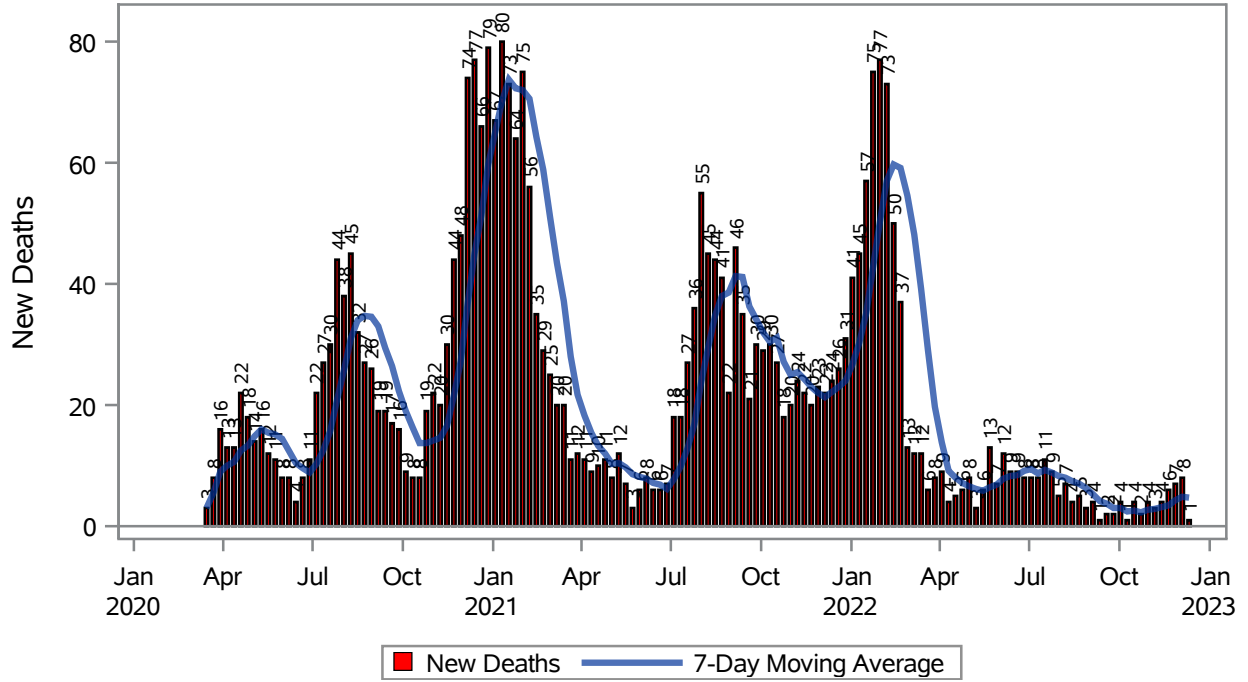
---

**Investigations are ongoing; data are subject to change.**

**Reporting through 19DEC2022**

**Las Vegas zip codes include 89101, 89102, 89104, 89106, 89108, 89109, 89110, 89117, 89129, 89130, 89131, 89143, 89146, 89149, 89166, 89145, 89144, 89134, 89107, 89128, 89138.**

### COVID19 Deaths for Las Vegas, 7-Day Moving Average



Investigations are ongoing; data are subject to change.

Reporting through 19DEC2022

Las Vegas zip codes include 89101, 89102, 89104, 89106, 89108, 89109, 89110, 89117, 89129, 89130, 89131, 89143, 89146, 89149, 89166, 89145, 89144, 89134, 89107, 89128, 89138.

**Table 4: New COVID19-Related Deaths and 7-Day Moving Average in Las Vegas, Previous Month**

Week	Deaths	7-Day Moving Average
20NOV2022	6	3.43
27NOV2022	7	4.29
04DEC2022	8	4.86
11DEC2022	1	4.71

---

Note1: Date of Death is calculated as follows based on completed information:  
A) COVID19 Case is reported as deceased B) COVID19 Case has a reported date of death.

If date of death is missing, then the following is substituted temporarily, in order:  
1) Disease onset date 2) Disease diagnosis date  
3) Lab result collection date 4) Report date to SNHD.

---

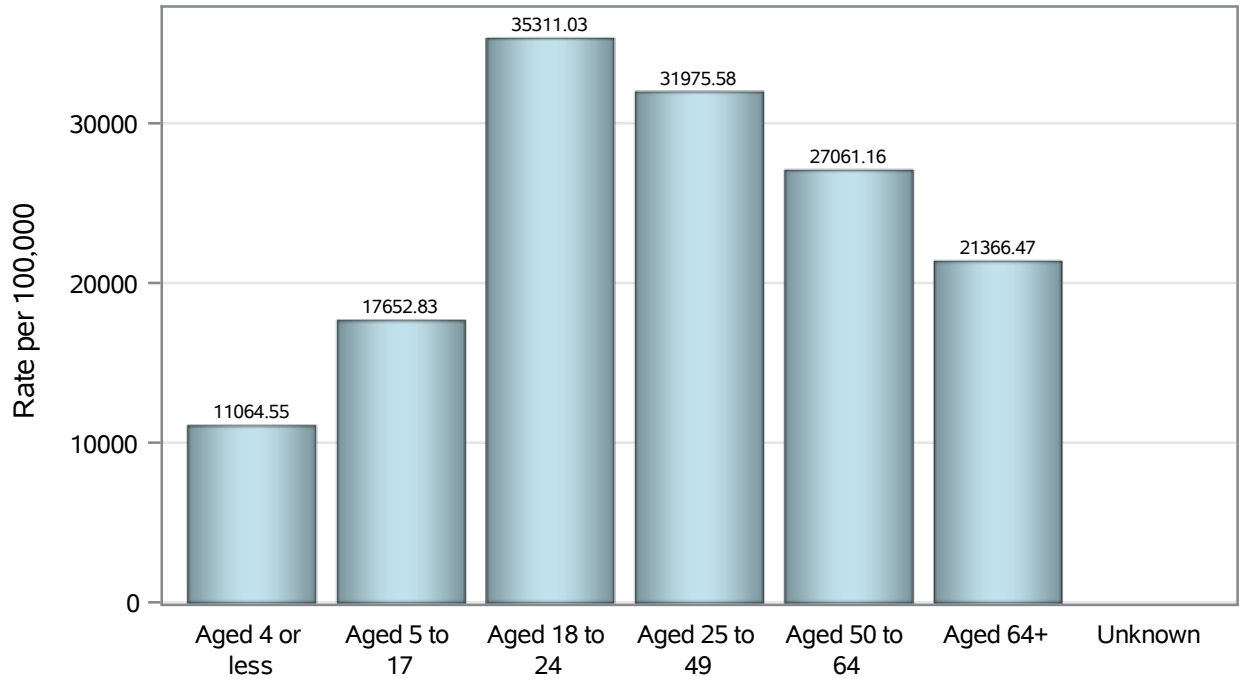
**Investigations are ongoing; data are subject to change.**

**Reporting through 19DEC2022**

**Las Vegas zip codes include 89101, 89102, 89104, 89106, 89108, 89109, 89110, 89117, 89129, 89130, 89131, 89143, 89146, 89149, 89166, 89145, 89144, 89134, 89107, 89128, 89138.**



### Case Age Rates in Las Vegas

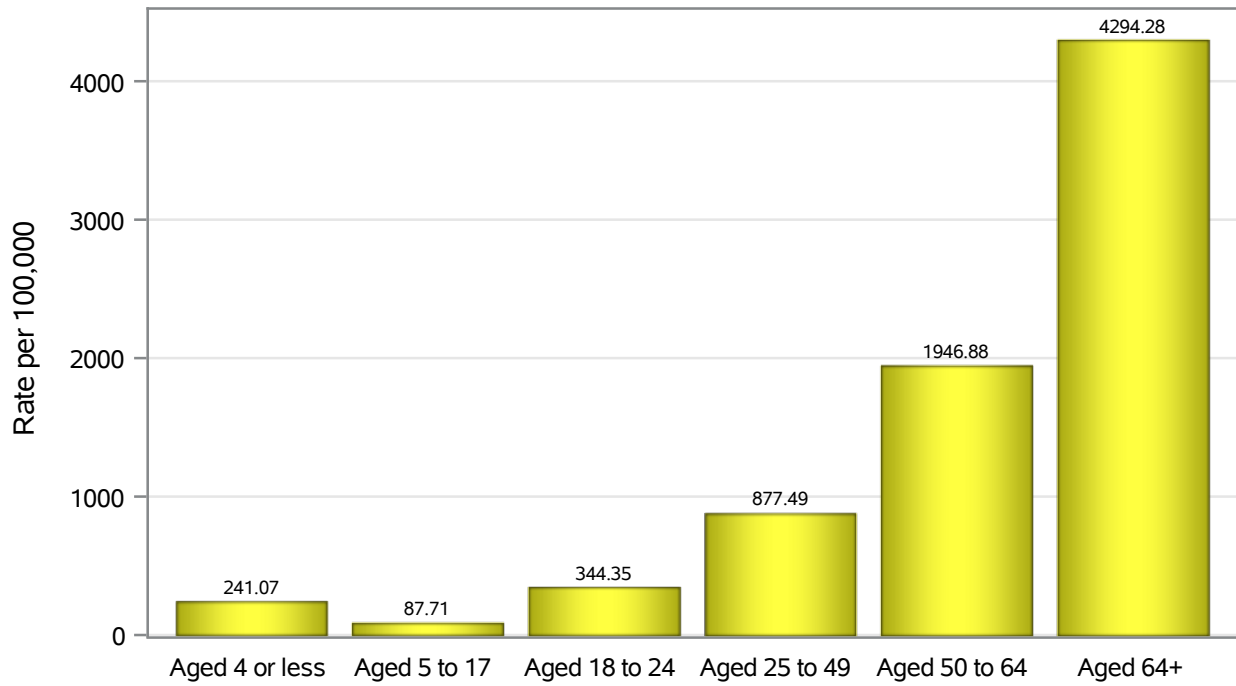


Investigations are ongoing; data are subject to change.

Reporting through 19DEC2022

Las Vegas zip codes include 89101, 89102, 89104, 89106, 89108, 89109, 89110, 89117, 89129, 89130, 89131, 89143, 89146, 89149, 89166, 89145, 89144, 89134, 89107, 89128, 89138.

### Hospitalization Age Rates in Las Vegas

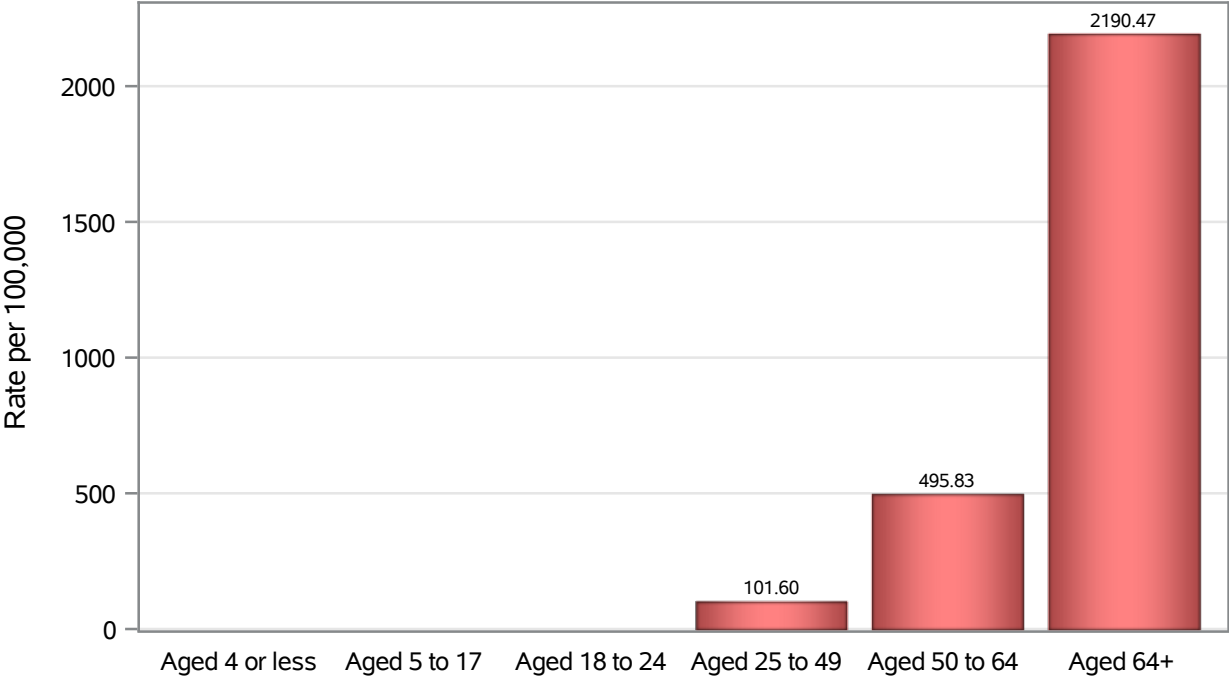


Investigations are ongoing; data are subject to change.

Reporting through 19DEC2022

Las Vegas zip codes include 89101, 89102, 89104, 89106, 89108, 89109, 89110, 89117, 89129, 89130, 89131, 89143, 89146, 89149, 89166, 89145, 89144, 89134, 89107, 89128, 89138.

### Death Age Rates in Las Vegas



Investigations are ongoing; data are subject to change.

Reporting through 19DEC2022

Las Vegas zip codes include 89101, 89102, 89104, 89106, 89108, 89109, 89110, 89117, 89129, 89130, 89131, 89143, 89146, 89149, 89166, 89145, 89144, 89134, 89107, 89128, 89138.

**Table 5: Age and COVID19 in Las Vegas**

Case Status	Age Categories	N	%	Population	Rate per 100,000
Cases	Aged 4 or less	4911	2.7	44,385	11065
	Aged 5 to 17	21937	12.0	124269	17653
	Aged 18 to 24	20509	11.2	58,081	35311
	Aged 25 to 49	78054	42.6	244105	31976
	Aged 50 to 64	35639	19.4	131698	27061
	Aged 64+	22191	12.1	103859	21366
	Unknown	37	0.0	.	.
Hospitalizations	Aged 4 or less	107	1.1	44,385	241.07
	Aged 5 to 17	109	1.1	124269	87.71
	Aged 18 to 24	200	2.1	58,081	344.35
	Aged 25 to 49	2142	22.4	244105	877.49
	Aged 50 to 64	2564	26.8	131698	1946.9
	Aged 64+	4460	46.5	103859	4294.3
	Deaths	Aged 4 or less	1	0.0	44,385
Aged 5 to 17		2	0.1	124269	.
Aged 18 to 24		9	0.3	58,081	.
Aged 25 to 49		248	7.8	244105	101.60
Aged 50 to 64		653	20.5	131698	495.83
Aged 64+		2275	71.4	103859	2190.5

Note1: Population data source for calculating rate estimates: U.S. Census Bureau, ACS 5-year estimate.

Note2: Rates for categories with fewer than 12 cases are suppressed due to high relative standard error.

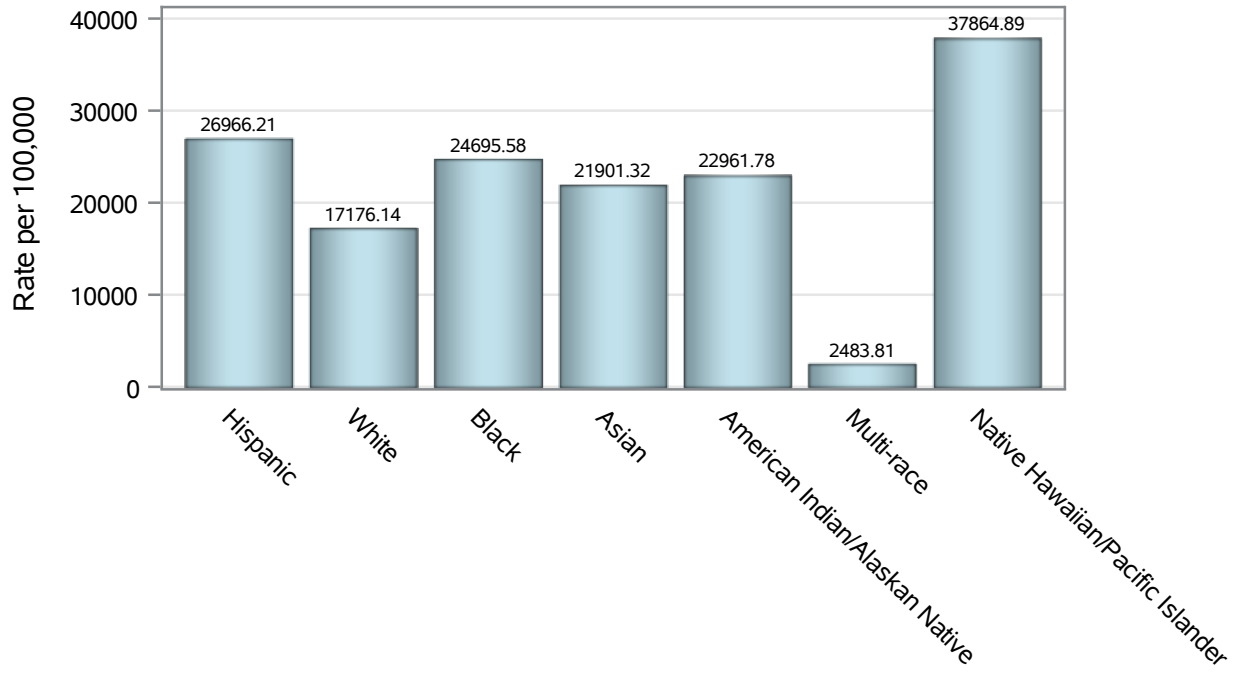
Note3: Hospitalizations are regardless of deceased status; Deaths are regardless of hospitalization status

**Investigations are ongoing; data are subject to change.**

**Reporting through 19DEC2022**

**Las Vegas zip codes include 89101, 89102, 89104, 89106, 89108, 89109, 89110, 89117, 89129, 89130, 89131, 89143, 89146, 89149, 89166, 89145, 89144, 89134, 89107, 89128, 89138.**

### Case Race/Ethnicity Rates in Las Vegas

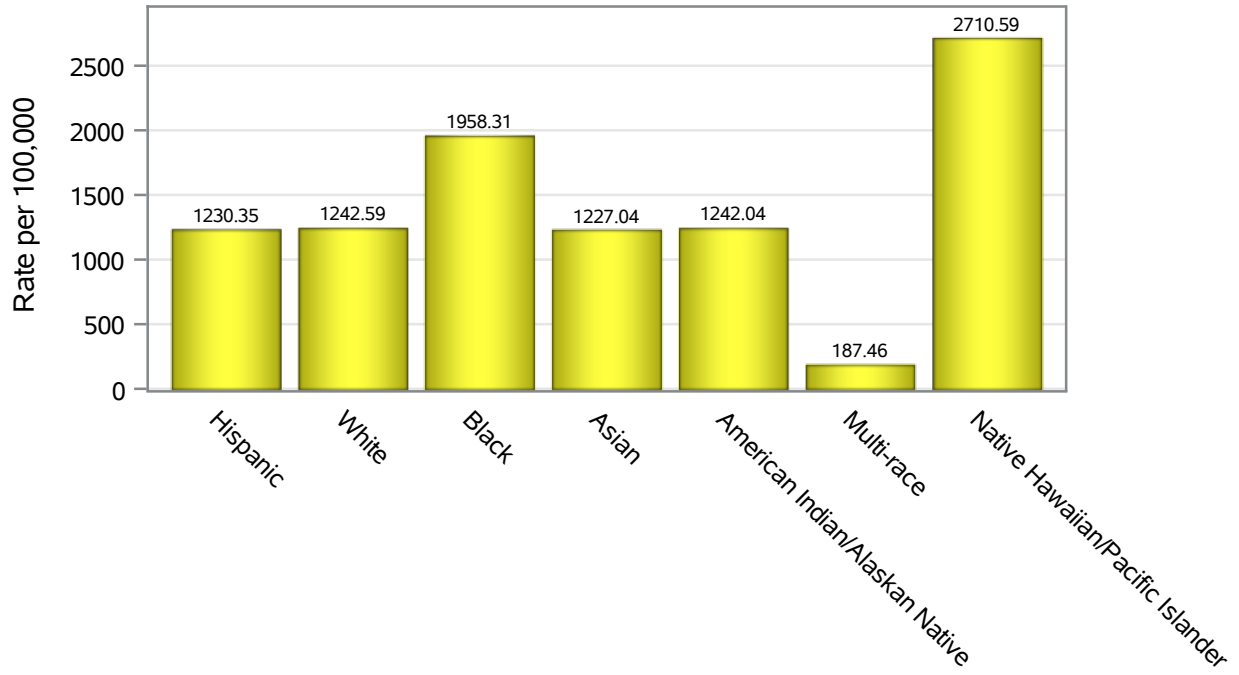


Investigations are ongoing; data are subject to change.

Reporting through 19DEC2022

Las Vegas zip codes include 89101, 89102, 89104, 89106, 89108, 89109, 89110, 89117, 89129, 89130, 89131, 89143, 89146, 89149, 89166, 89145, 89144, 89134, 89107, 89128, 89138.

### Hospitalization Race/Ethnicity Rates in Las Vegas

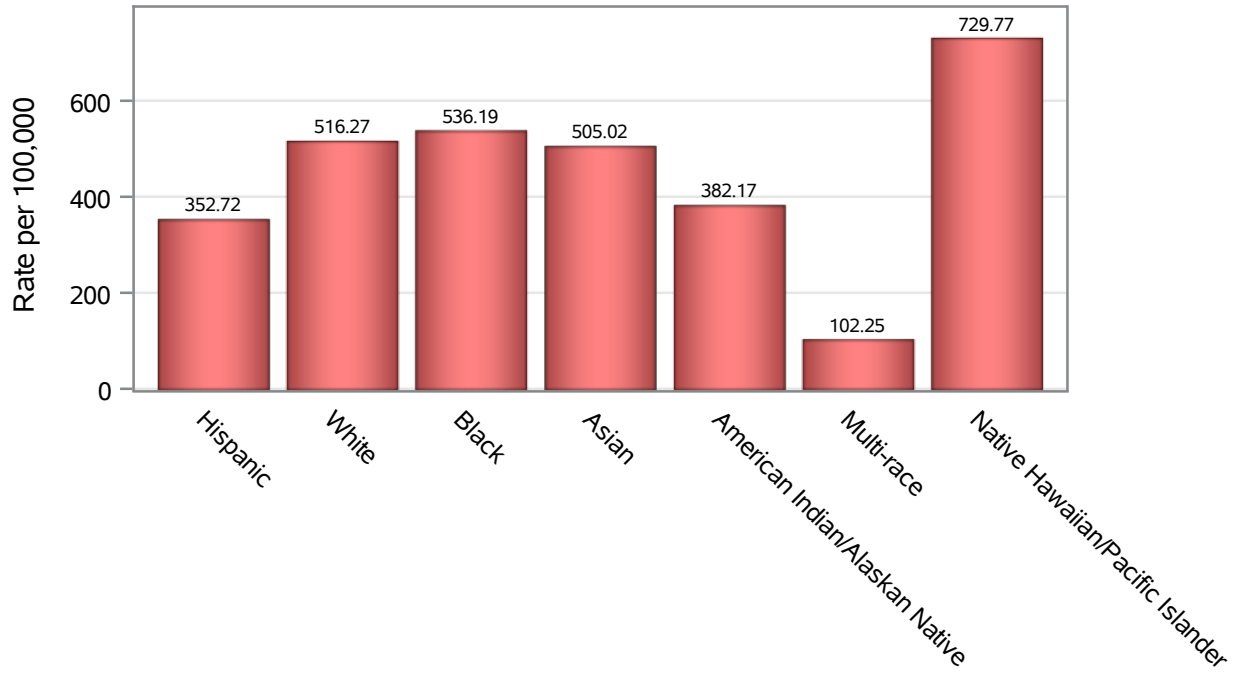


Investigations are ongoing; data are subject to change.

Reporting through 19DEC2022

Las Vegas zip codes include 89101, 89102, 89104, 89106, 89108, 89109, 89110, 89117, 89129, 89130, 89131, 89143, 89146, 89149, 89166, 89145, 89144, 89134, 89107, 89128, 89138.

### Death Race/Ethnicity Rates in Las Vegas



Investigations are ongoing; data are subject to change.

Reporting through 19DEC2022

Las Vegas zip codes include 89101, 89102, 89104, 89106, 89108, 89109, 89110, 89117, 89129, 89130, 89131, 89143, 89146, 89149, 89166, 89145, 89144, 89134, 89107, 89128, 89138.

**Table 6: Race/Ethnicity and COVID19 in Las Vegas**

Case Status	Race Ethnicity Categories	N	%	Population	Rate per 100,000
Cases	Hispanic	61391	33.5	227659	26966
	White	54296	29.6	316113	17176
	Black	19206	10.5	77,771	24696
	Asian	11102	6.1	50,691	21901
	American Indian/Alaskan Native	721	0.4	3,140	22962
	Multi-race	583	0.3	23,472	2483.8
	Native Hawaiian/Pacific Islander	1816	1.0	4,796	37865
	Unknown	34163	18.6	.	.
Hospitalizations	Hispanic	2801	29.2	227659	1230.3
	White	3928	41.0	316113	1242.6
	Black	1523	15.9	77,771	1958.3
	Asian	622	6.5	50,691	1227.0
	American Indian/Alaskan Native	39	0.4	3,140	1242.0
	Multi-race	44	0.5	23,472	187.46
	Native Hawaiian/Pacific Islander	130	1.4	4,796	2710.6
	Unknown	495	5.2	.	.
Deaths	Hispanic	803	25.2	227659	352.72
	White	1632	51.2	316113	516.27
	Black	417	13.1	77,771	536.19
	Asian	256	8.0	50,691	505.02
	American Indian/Alaskan Native	12	0.4	3,140	382.17
	Multi-race	24	0.8	23,472	102.25
	Native Hawaiian/Pacific Islander	35	1.1	4,796	729.77
	Unknown	9	0.3	.	.

Note1: Population data source for calculating rate estimates: U.S. Census Bureau, ACS 5-year estimate.

Note2: Rates for categories with fewer than 12 cases are suppressed due to high relative standard error.

Note3: Hospitalizations are regardless of deceased status; Deaths are regardless of hospitalization status

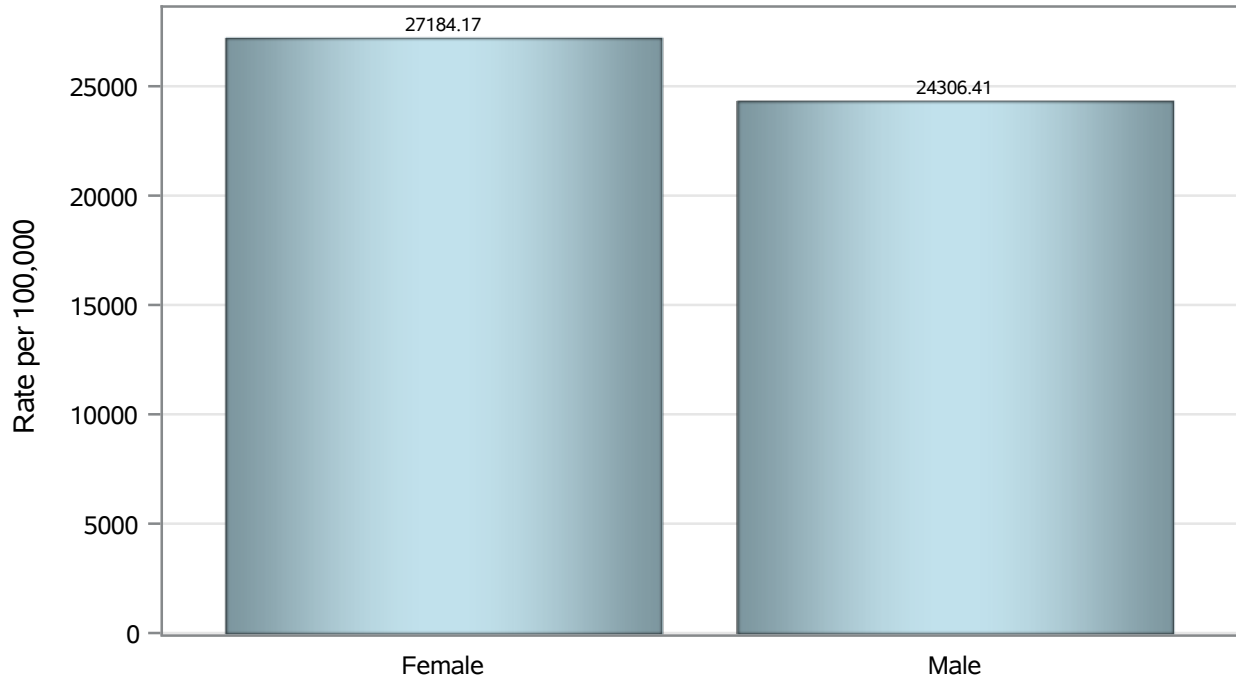
**Investigations are ongoing; data are subject to change.**

**Reporting through 19DEC2022**

**Las Vegas zip codes include 89101, 89102, 89104, 89106, 89108, 89109, 89110, 89117, 89129, 89130, 89131, 89143, 89146, 89149, 89166, 89145, 89144, 89134, 89107, 89128, 89138.**



### Case Birth Sex Rates in Las Vegas

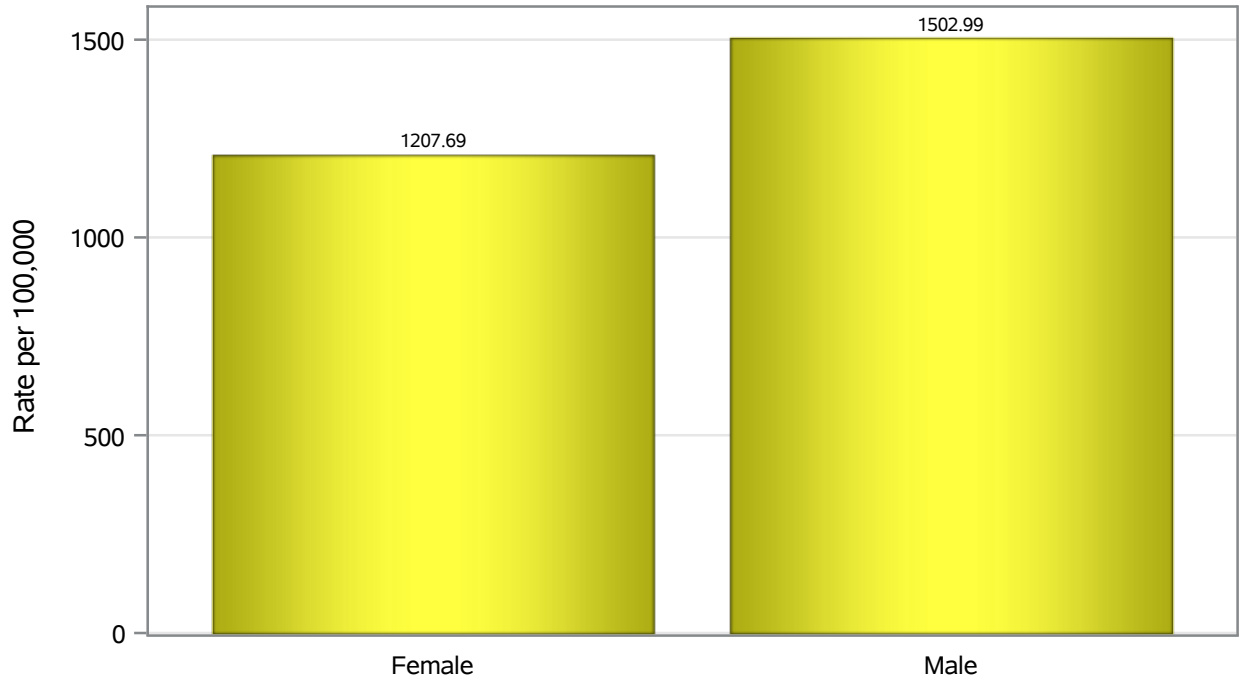


Investigations are ongoing; data are subject to change.

Reporting through 19DEC2022

Las Vegas zip codes include 89101, 89102, 89104, 89106, 89108, 89109, 89110, 89117, 89129, 89130, 89131, 89143, 89146, 89149, 89166, 89145, 89144, 89134, 89107, 89128, 89138.

### Hospitalization Birth Sex Rates in Las Vegas

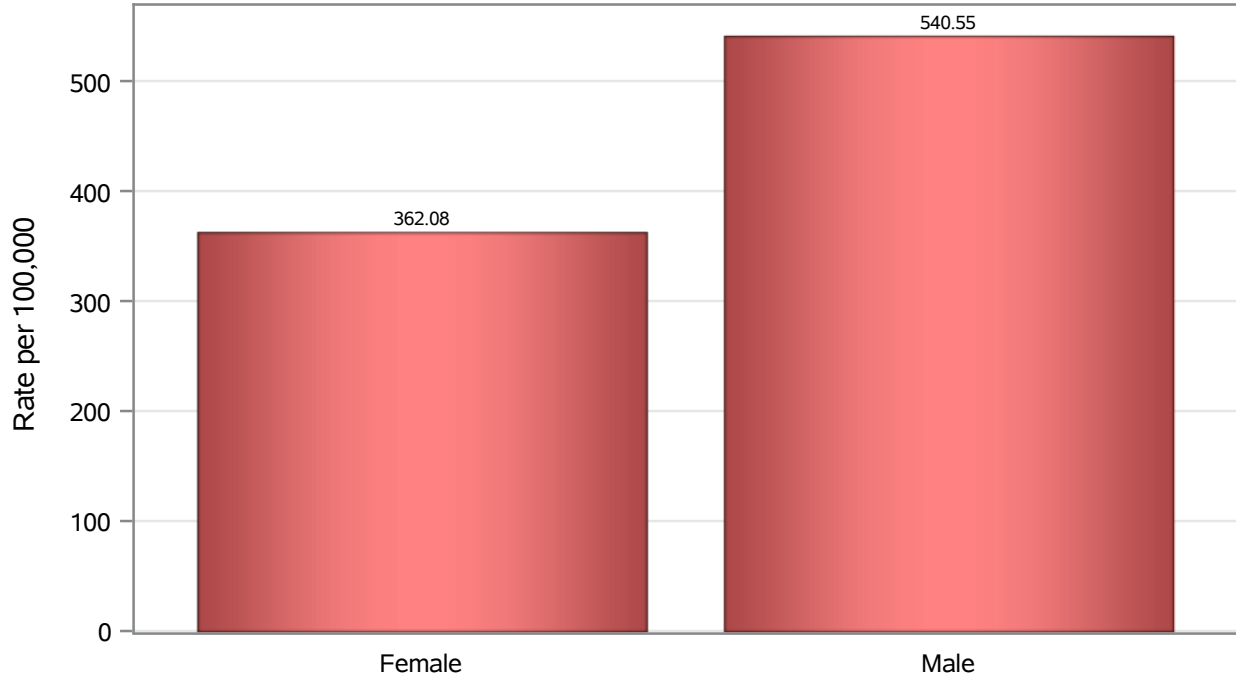


Investigations are ongoing; data are subject to change.

Reporting through 19DEC2022

Las Vegas zip codes include 89101, 89102, 89104, 89106, 89108, 89109, 89110, 89117, 89129, 89130, 89131, 89143, 89146, 89149, 89166, 89145, 89144, 89134, 89107, 89128, 89138.

### Death Birth Sex Rates in Las Vegas



Investigations are ongoing; data are subject to change.

Reporting through 19DEC2022

Las Vegas zip codes include 89101, 89102, 89104, 89106, 89108, 89109, 89110, 89117, 89129, 89130, 89131, 89143, 89146, 89149, 89166, 89145, 89144, 89134, 89107, 89128, 89138.

**Table 7: Birth Sex and COVID19 in Las Vegas**

Case Status	Birth Sex Categories	N	%	Population	Rate per 100,000
Cases	Female	96024	52.4	353235	27184
	Male	85841	46.8	353162	24306
	Unknown	1413	0.8	.	.
Hospitalizations	Female	4266	44.5	353235	1207.7
	Male	5308	55.4	353162	1503.0
	Unknown	8	0.1	.	.
Deaths	Female	1279	40.1	353235	362.08
	Male	1909	59.9	353162	540.55

Note1: Population data source for calculating rate estimates: U.S. Census Bureau, ACS 5-year estimate.

Note2: Rates for categories with fewer than 12 cases are suppressed due to high relative standard error.

Note3: Hospitalizations are regardless of deceased status; Deaths are regardless of hospitalization status

**Investigations are ongoing; data are subject to change.**

**Reporting through 19DEC2022**

**Las Vegas zip codes include 89101, 89102, 89104, 89106, 89108, 89109, 89110, 89117, 89129, 89130, 89131, 89143, 89146, 89149, 89166, 89145, 89144, 89134, 89107, 89128, 89138.**