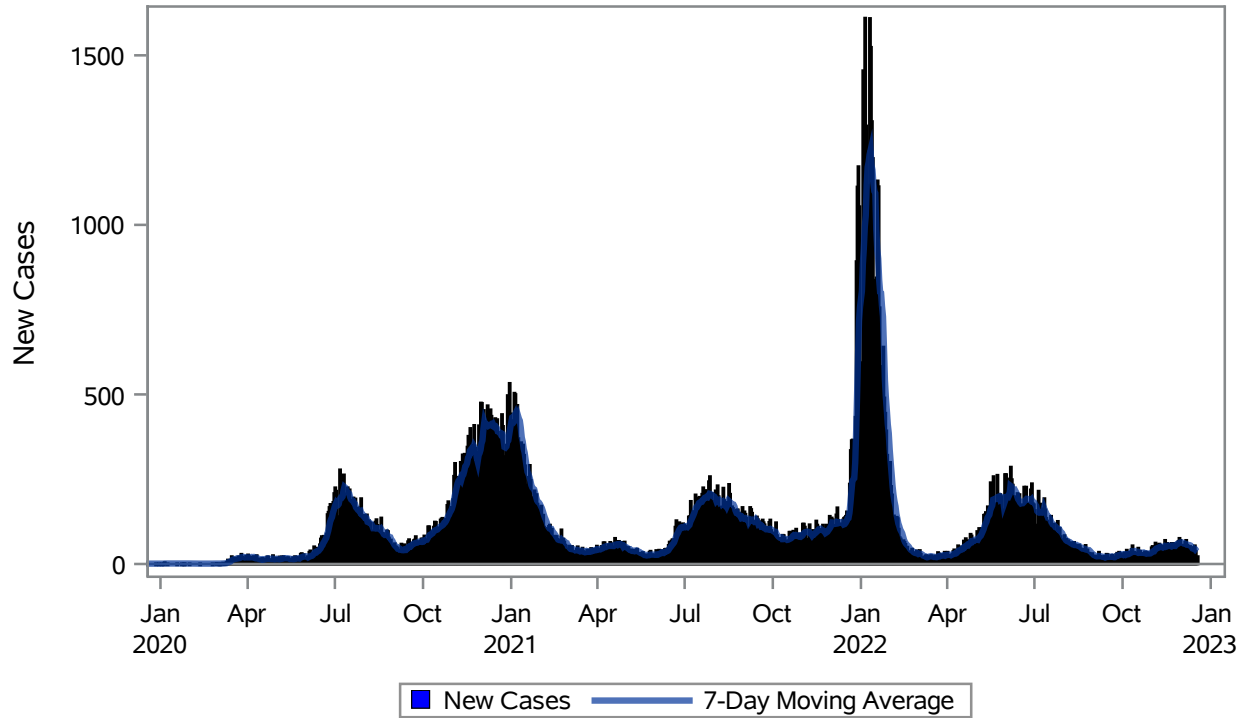


COVID19 Cases for Henderson, 7-Day Moving Average



Investigations are ongoing; data are subject to change.

Reporting through 19DEC2022

Henderson zip codes include 89002, 89011, 89012, 89014, 89015, 89044, 89052, 89074, 89119, 89120, 89122, 89123, 89124, 89183.

Table 1: New COVID19 Cases and 7-Day Moving Average in Henderson, Previous Two Weeks

Date (Daily)	New Cases	7-Day Moving Average
06DEC2022	70	58.86
07DEC2022	56	56.86
08DEC2022	53	56.71
09DEC2022	49	55.71
10DEC2022	52	55.57
11DEC2022	37	54.43
12DEC2022	38	50.71
13DEC2022	37	46.00
14DEC2022	49	45.00
15DEC2022	54	45.14
16DEC2022	37	43.43
17DEC2022	17	38.43

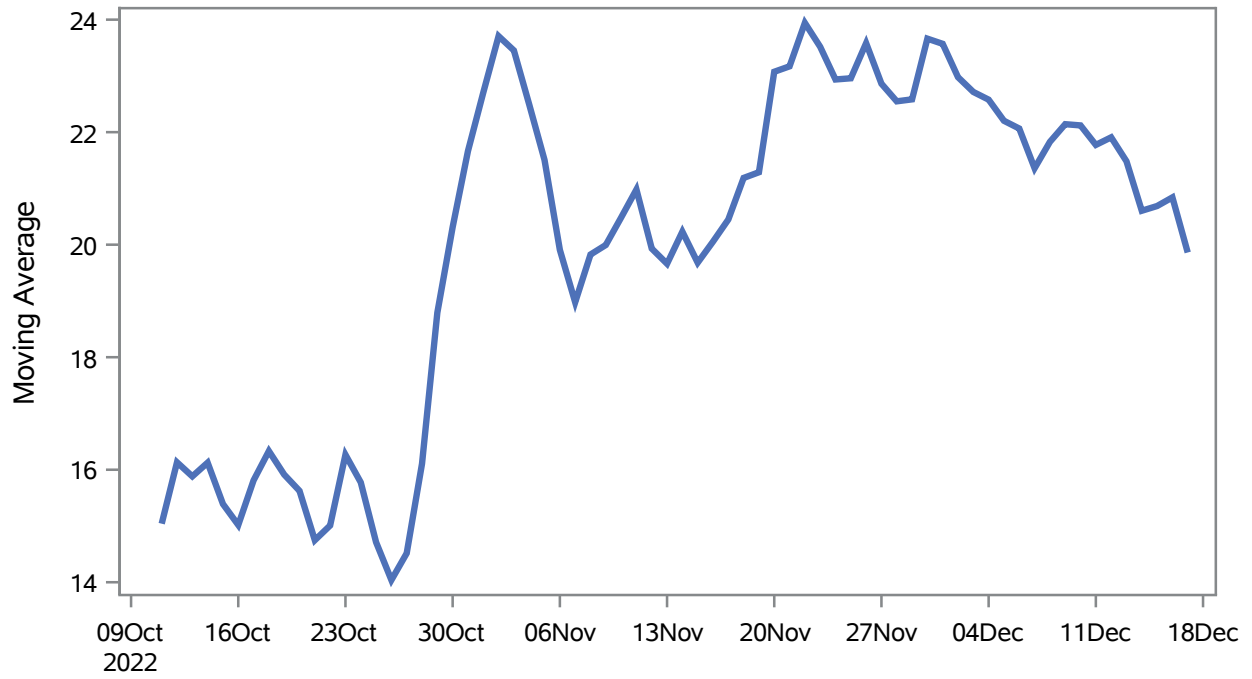
Note1: Event Date is calculated as follows based on completed information:
1) Disease onset date 2) Disease diagnosis date 3) Lab result collection date 4) Report date to SNHD.

Investigations are ongoing; data are subject to change.

Reporting through 19DEC2022

Henderson zip codes include 89002, 89011, 89012, 89014, 89015, 89044, 89052, 89074, 89119, 89120, 89122, 89123, 89124, 89183.

Percent of People Receiving COVID-19 Viral Tests Who Have Positive Results in Henderson



Investigations are ongoing; data are subject to change.

Reporting through 19DEC2022

Henderson zip codes include 89002, 89011, 89012, 89014, 89015, 89044, 89052, 89074, 89119, 89120, 89122, 89123, 89124, 89183.

Table 2: Percent of People Receiving COVID-19 Viral Tests Who Have Positive Results in Henderson

Collection Date	Positive	Negative	Equivocal	Total	% Positivity	7-Day Moving Average
03DEC2022	52	181		233	22.32	22.7
04DEC2022	44	142		186	23.66	22.6
05DEC2022	64	249	1	314	20.38	22.2
06DEC2022	69	221		290	23.79	22.1
07DEC2022	58	208		266	21.80	21.4
08DEC2022	59	219		278	21.22	21.8
09DEC2022	48	172		220	21.82	22.1
10DEC2022	43	151		194	22.16	22.1
11DEC2022	38	141		179	21.23	21.8
12DEC2022	58	213	1	272	21.32	21.9
13DEC2022	41	155	1	197	20.81	21.5
14DEC2022	36	194		230	15.65	20.6
15DEC2022	53	190		243	21.81	20.7
16DEC2022	57	192		249	22.89	20.8
17DEC2022	30	166		196	15.31	19.9

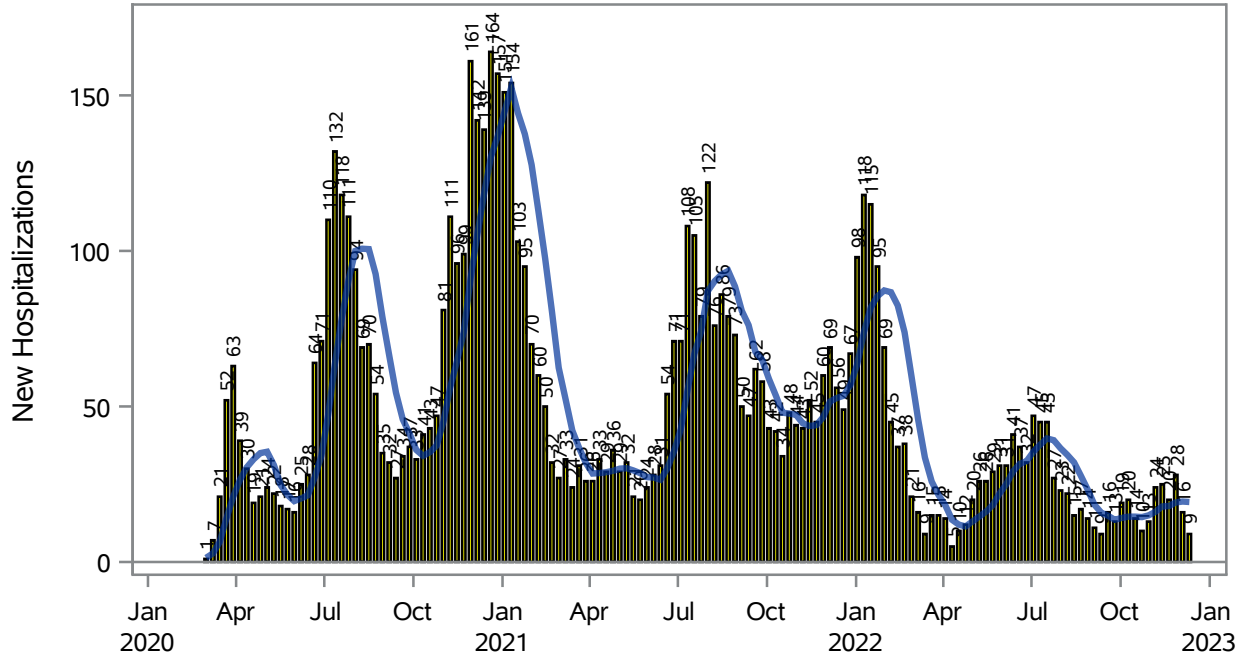
Note: Testing Data includes a 3 day delay

Investigations are ongoing; data are subject to change.

Reporting through 19DEC2022

Henderson zip codes include 89002, 89011, 89012, 89014, 89015, 89044, 89052, 89074, 89119, 89120, 89122, 89123, 89124, 89183.

COVID19 Hospitalizations for Henderson, 7-Day Moving Average



■ New Hospitalizations — 7-Day Moving Average

Investigations are ongoing; data are subject to change.

Reporting through 19DEC2022

Henderson zip codes include 89002, 89011, 89012, 89014, 89015, 89044, 89052, 89074, 89119, 89120, 89122, 89123, 89124, 89183.

Table 3: New COVID19-Related Hospitalizations and 7-Day Moving Average in Henderson, previous month

Week	Hospitalizations	7-Day Moving Average
20NOV2022	20	18.0
27NOV2022	28	19.1
04DEC2022	16	19.4
11DEC2022	9	19.3

Note1: Admission Date is calculated as follows based on completed information:
A) COVID19 Case is hospitalized B) COVID19 Case has a hospital admission date.

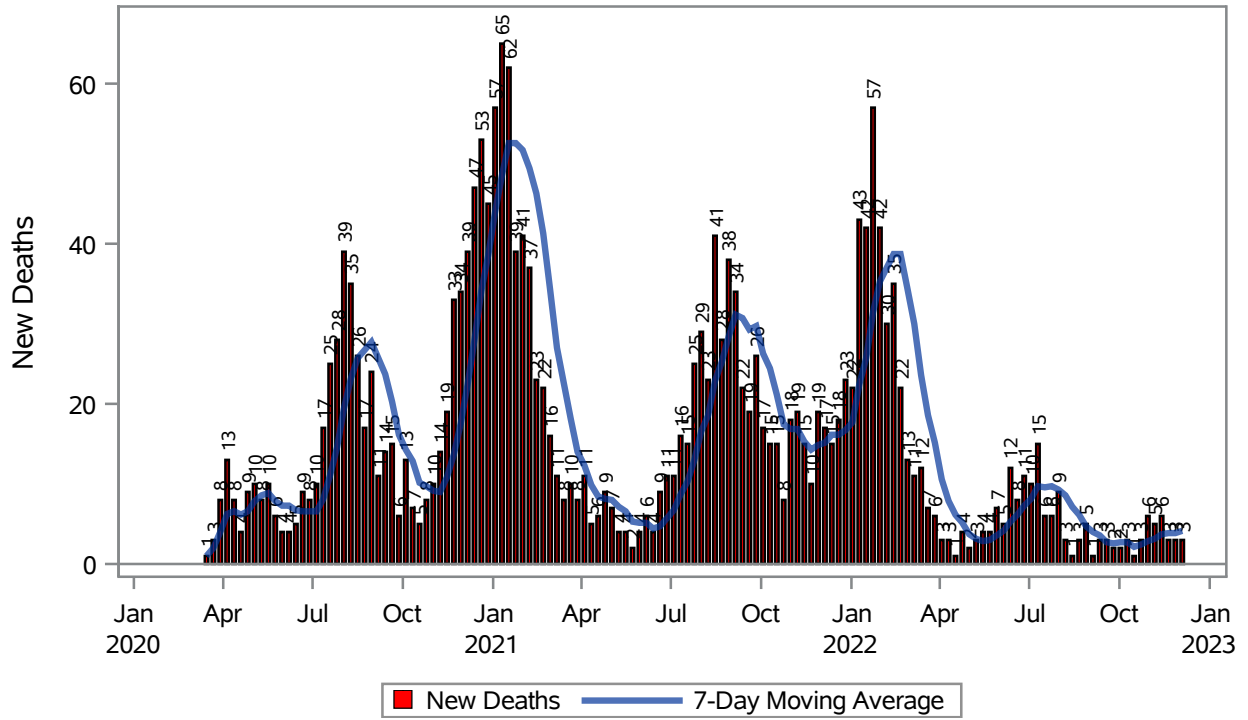
If admission date is missing, then the following is substituted temporarily, in order:
1) Disease onset date 2) Disease diagnosis date 3) Lab result collection date 4) Report date to SNHD.

Investigations are ongoing; data are subject to change.

Reporting through 19DEC2022

Henderson zip codes include 89002, 89011, 89012, 89014, 89015, 89044, 89052, 89074, 89119, 89120, 89122, 89123, 89124, 89183.

COVID19 Deaths for Henderson, 7-Day Moving Average



Investigations are ongoing; data are subject to change.

Reporting through 19DEC2022

Henderson zip codes include 89002, 89011, 89012, 89014, 89015, 89044, 89052, 89074, 89119, 89120, 89122, 89123, 89124, 89183.

Table 4: New COVID19-Related Deaths and 7-Day Moving Average in Henderson, Previous Month

Week	Deaths	7-Day Moving Average
20NOV2022	3	3.86
27NOV2022	3	3.86
04DEC2022	3	4.14

Note1: Date of Death is calculated as follows based on completed information:
A) COVID19 Case is reported as deceased B) COVID19 Case has a reported date of death.

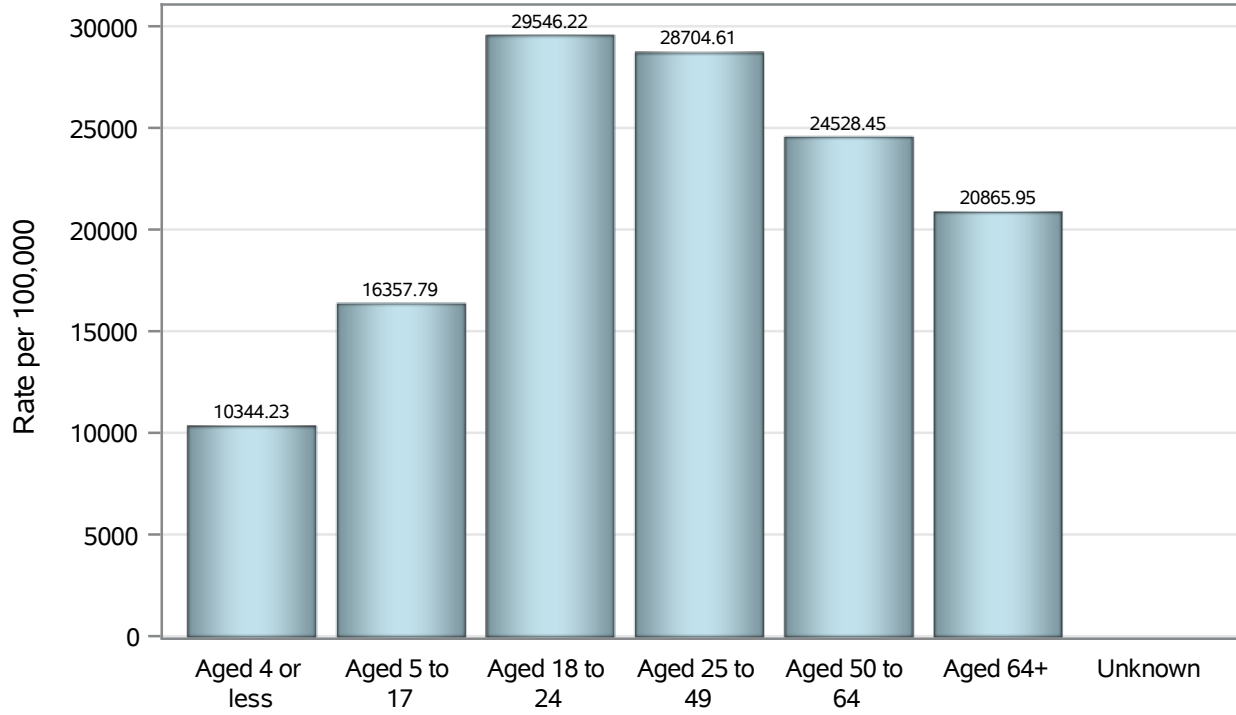
If date of death is missing, then the following is substituted temporarily, in order:
1) Disease onset date 2) Disease diagnosis date
3) Lab result collection date 4) Report date to SNHD.

Investigations are ongoing; data are subject to change.

Reporting through 19DEC2022

Henderson zip codes include 89002, 89011, 89012, 89014, 89015, 89044, 89052, 89074, 89119, 89120, 89122, 89123, 89124, 89183.

Case Age Rates in Henderson

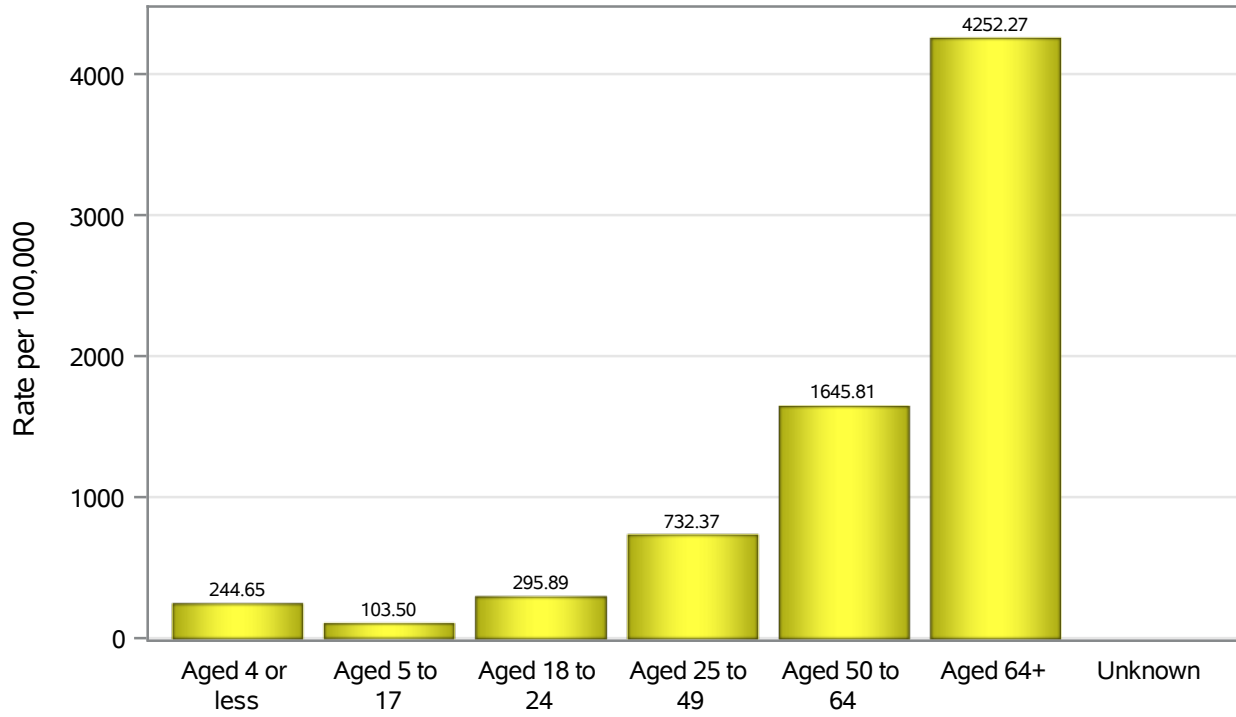


Investigations are ongoing; data are subject to change.

Reporting through 19DEC2022

Henderson zip codes include 89002, 89011, 89012, 89014, 89015, 89044, 89052, 89074, 89119, 89120, 89122, 89123, 89124, 89183.

Hospitalization Age Rates in Henderson

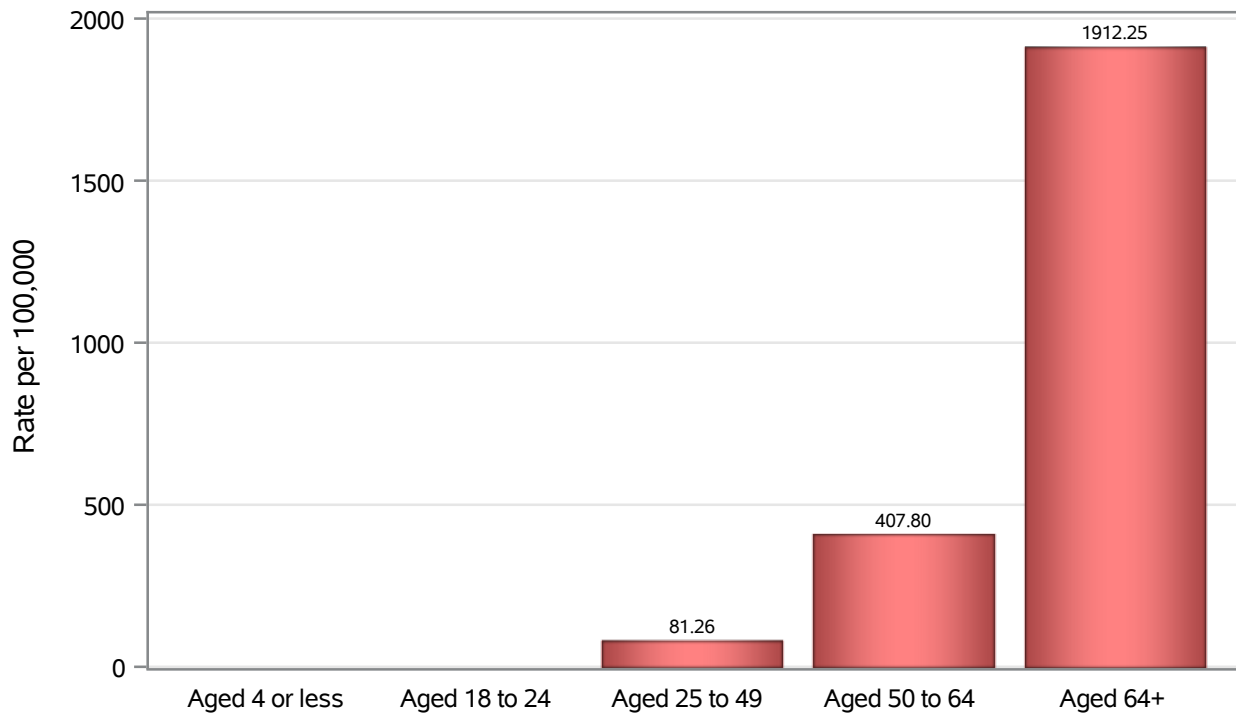


Investigations are ongoing; data are subject to change.

Reporting through 19DEC2022

Henderson zip codes include 89002, 89011, 89012, 89014, 89015, 89044, 89052, 89074, 89119, 89120, 89122, 89123, 89124, 89183.

Death Age Rates in Henderson



Investigations are ongoing; data are subject to change.

Reporting through 19DEC2022

Henderson zip codes include 89002, 89011, 89012, 89014, 89015, 89044, 89052, 89074, 89119, 89120, 89122, 89123, 89124, 89183.

Table 5: Age and COVID19 in Henderson

Case Status	Age Categories	N	%	Population	Rate per 100,000
Cases	Aged 4 or less	3002	2.4	29,021	10344
	Aged 5 to 17	13434	10.6	82,126	16358
	Aged 18 to 24	13081	10.3	44,273	29546
	Aged 25 to 49	53696	42.5	187064	28705
	Aged 50 to 64	25202	19.9	102746	24528
	Aged 64+	18048	14.3	86,495	20866
	Unknown	25	0.0	.	.
Hospitalizations	Aged 4 or less	71	1.0	29,021	244.65
	Aged 5 to 17	85	1.2	82,126	103.50
	Aged 18 to 24	131	1.9	44,273	295.89
	Aged 25 to 49	1370	19.5	187064	732.37
	Aged 50 to 64	1691	24.1	102746	1645.8
	Aged 64+	3678	52.3	86,495	4252.3
	Unknown	1	0.0	.	.
Deaths	Aged 4 or less	1	0.0	29,021	.
	Aged 18 to 24	3	0.1	44,273	.
	Aged 25 to 49	152	6.8	187064	81.26
	Aged 50 to 64	419	18.8	102746	407.80
	Aged 64+	1654	74.2	86,495	1912.2

Note1: Population data source for calculating rate estimates: U.S. Census Bureau, ACS 5-year estimate.

Note2: Rates for categories with fewer than 12 cases are suppressed due to high relative standard error.

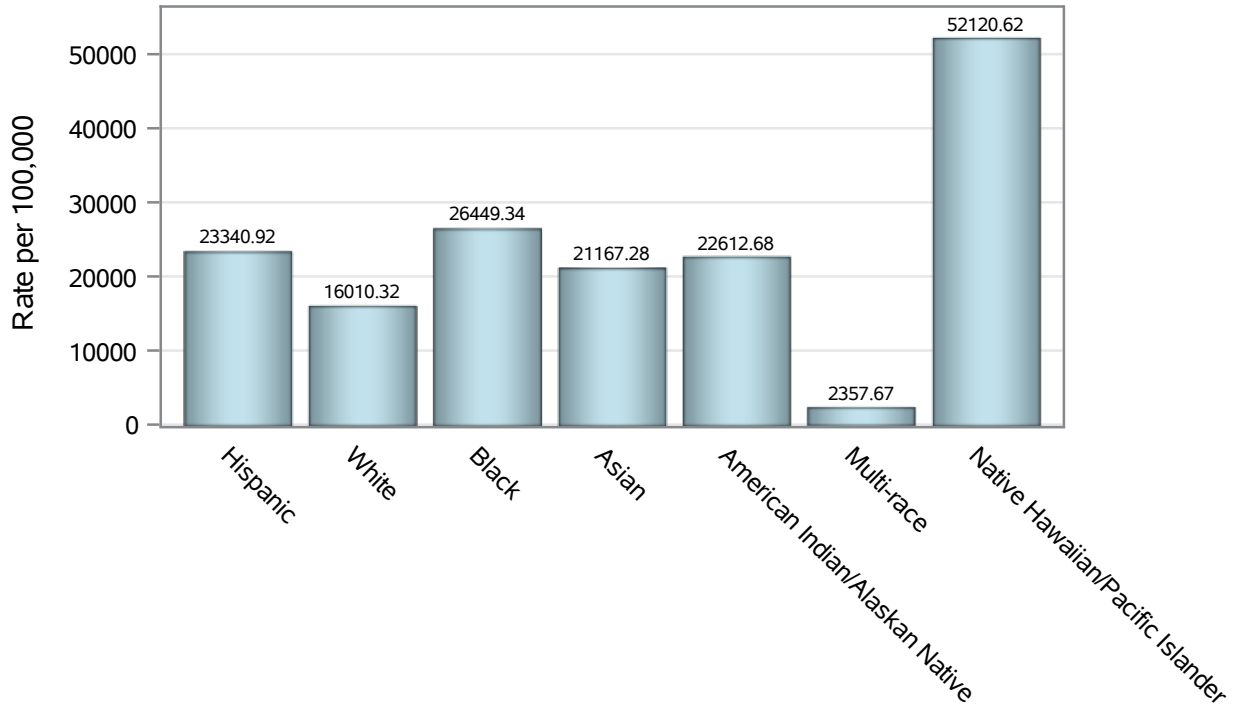
Note3: Hospitalizations are regardless of deceased status; Deaths are regardless of hospitalization status

Investigations are ongoing; data are subject to change.

Reporting through 19DEC2022

Henderson zip codes include 89002, 89011, 89012, 89014, 89015, 89044, 89052, 89074, 89119, 89120, 89122, 89123, 89124, 89183.

Case Race/Ethnicity Rates in Henderson

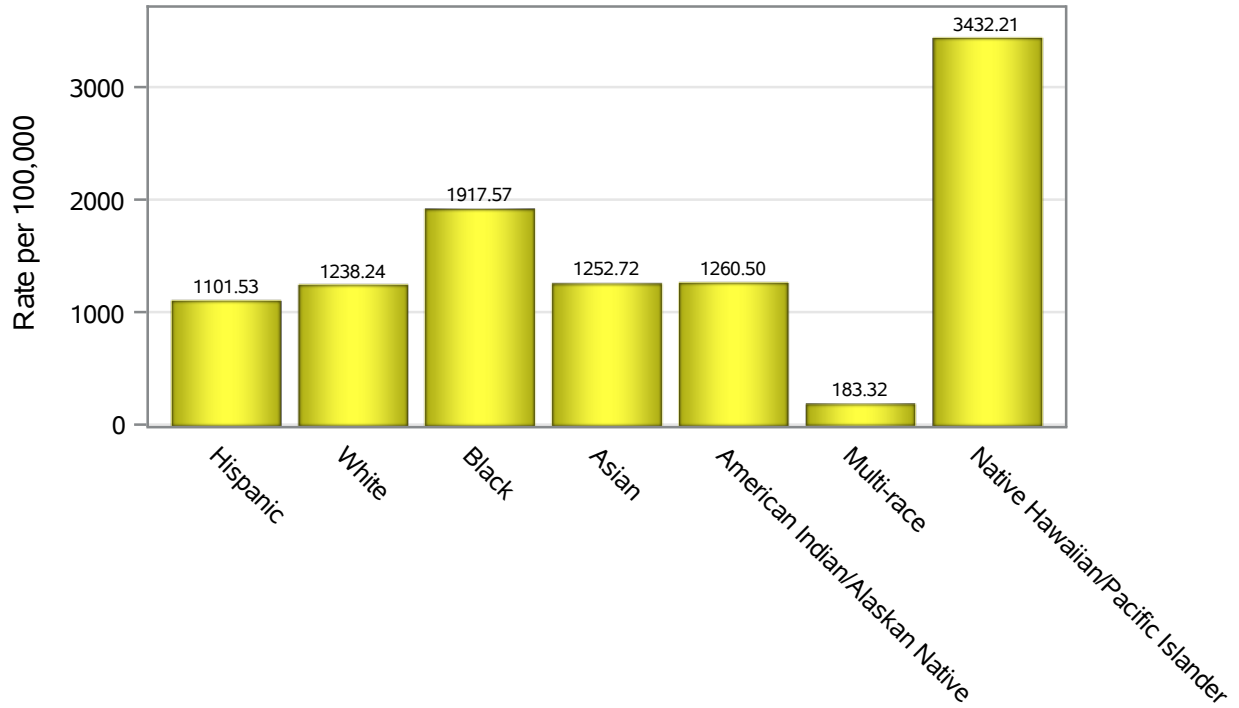


Investigations are ongoing; data are subject to change.

Reporting through 19DEC2022

Henderson zip codes include 89002, 89011, 89012, 89014, 89015, 89044, 89052, 89074, 89119, 89120, 89122, 89123, 89124, 89183.

Hospitalization Race/Ethnicity Rates in Henderson

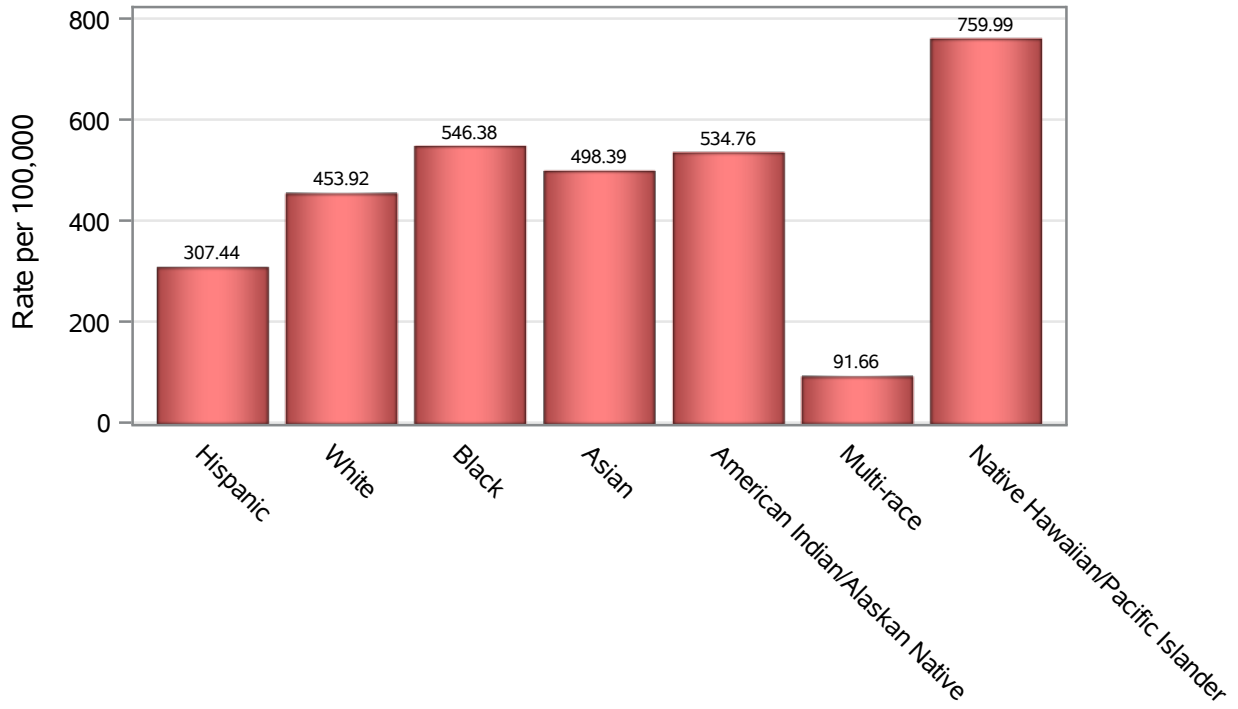


Investigations are ongoing; data are subject to change.

Reporting through 19DEC2022

Henderson zip codes include 89002, 89011, 89012, 89014, 89015, 89044, 89052, 89074, 89119, 89120, 89122, 89123, 89124, 89183.

Death Race/Ethnicity Rates in Henderson



Investigations are ongoing; data are subject to change.

Reporting through 19DEC2022

Henderson zip codes include 89002, 89011, 89012, 89014, 89015, 89044, 89052, 89074, 89119, 89120, 89122, 89123, 89124, 89183.

Table 6: Race/Ethnicity and COVID19 in Henderson

Case Status	Race Ethnicity Categories	N	%	Population	Rate per 100,000
Cases	Hispanic	28394	22.4	121649	23341
	White	46664	36.9	291462	16010
	Black	10069	8.0	38,069	26449
	Asian	11000	8.7	51,967	21167
	American Indian/Alaskan Native	592	0.5	2,618	22613
	Multi-race	463	0.4	19,638	2357.7
	Native Hawaiian/Pacific Islander	2126	1.7	4,079	52121
	Unknown	27180	21.5	.	.
Hospitalizations	Hispanic	1340	19.1	121649	1101.5
	White	3609	51.4	291462	1238.2
	Black	730	10.4	38,069	1917.6
	Asian	651	9.3	51,967	1252.7
	American Indian/Alaskan Native	33	0.5	2,618	1260.5
	Multi-race	36	0.5	19,638	183.32
	Native Hawaiian/Pacific Islander	140	2.0	4,079	3432.2
	Unknown	488	6.9	.	.
Deaths	Hispanic	374	16.8	121649	307.44
	White	1323	59.4	291462	453.92
	Black	208	9.3	38,069	546.38
	Asian	259	11.6	51,967	498.39
	American Indian/Alaskan Native	14	0.6	2,618	534.76
	Multi-race	18	0.8	19,638	91.66
	Native Hawaiian/Pacific Islander	31	1.4	4,079	759.99
	Unknown	2	0.1	.	.

Note1: Population data source for calculating rate estimates: U.S. Census Bureau, ACS 5-year estimate.

Note2: Rates for categories with fewer than 12 cases are suppressed due to high relative standard error.

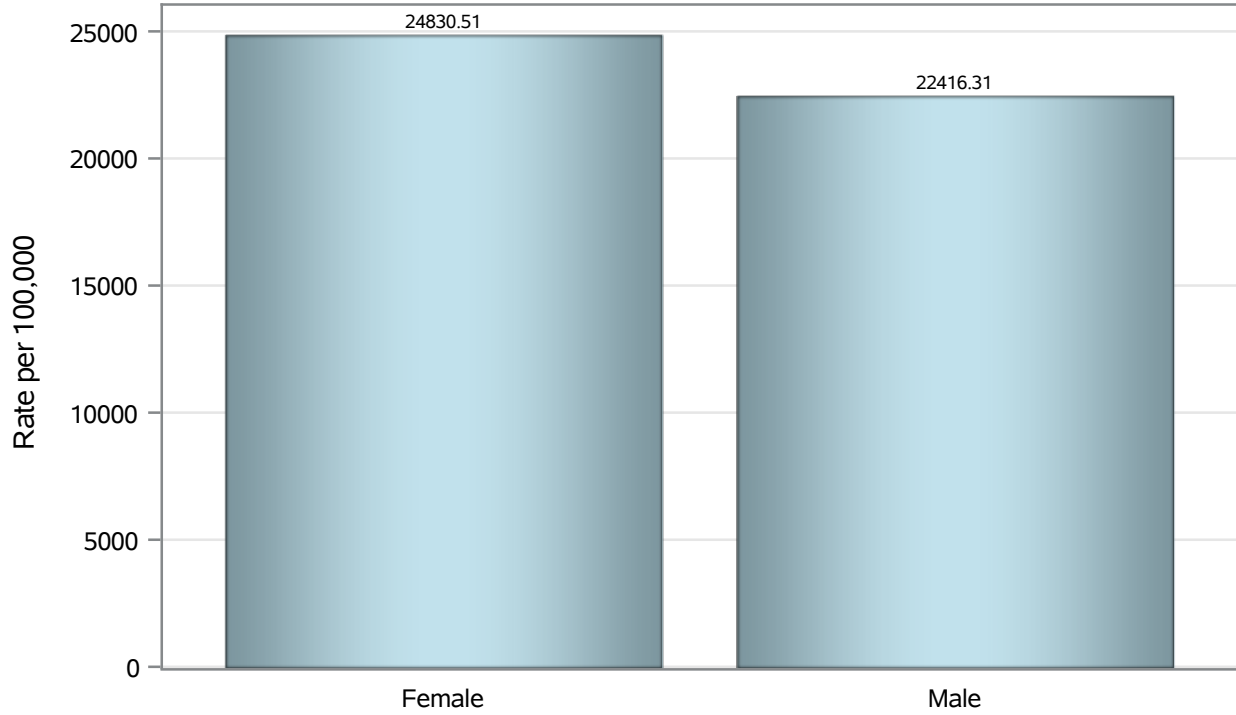
Note3: Hospitalizations are regardless of deceased status; Deaths are regardless of hospitalization status

Investigations are ongoing; data are subject to change.

Reporting through 19DEC2022

Henderson zip codes include 89002, 89011, 89012, 89014, 89015, 89044, 89052, 89074, 89119, 89120, 89122, 89123, 89124, 89183.

Case Birth Sex Rates in Henderson

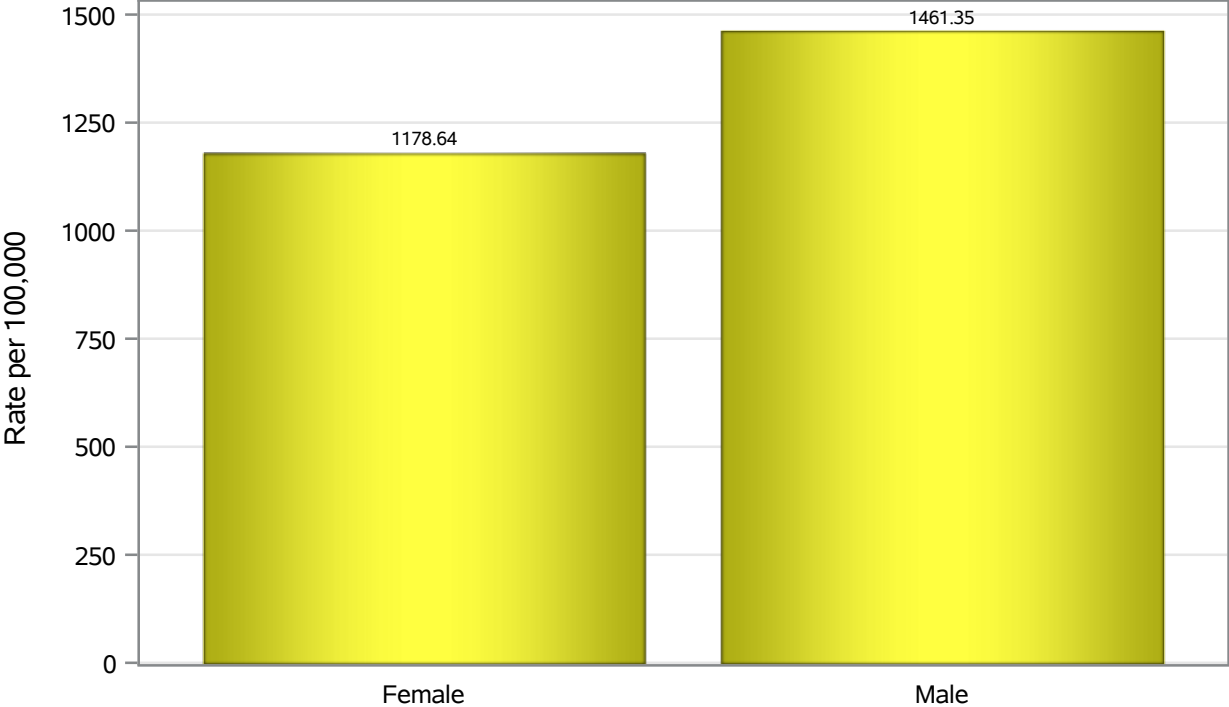


Investigations are ongoing; data are subject to change.

Reporting through 19DEC2022

Henderson zip codes include 89002, 89011, 89012, 89014, 89015, 89044, 89052, 89074, 89119, 89120, 89122, 89123, 89124, 89183.

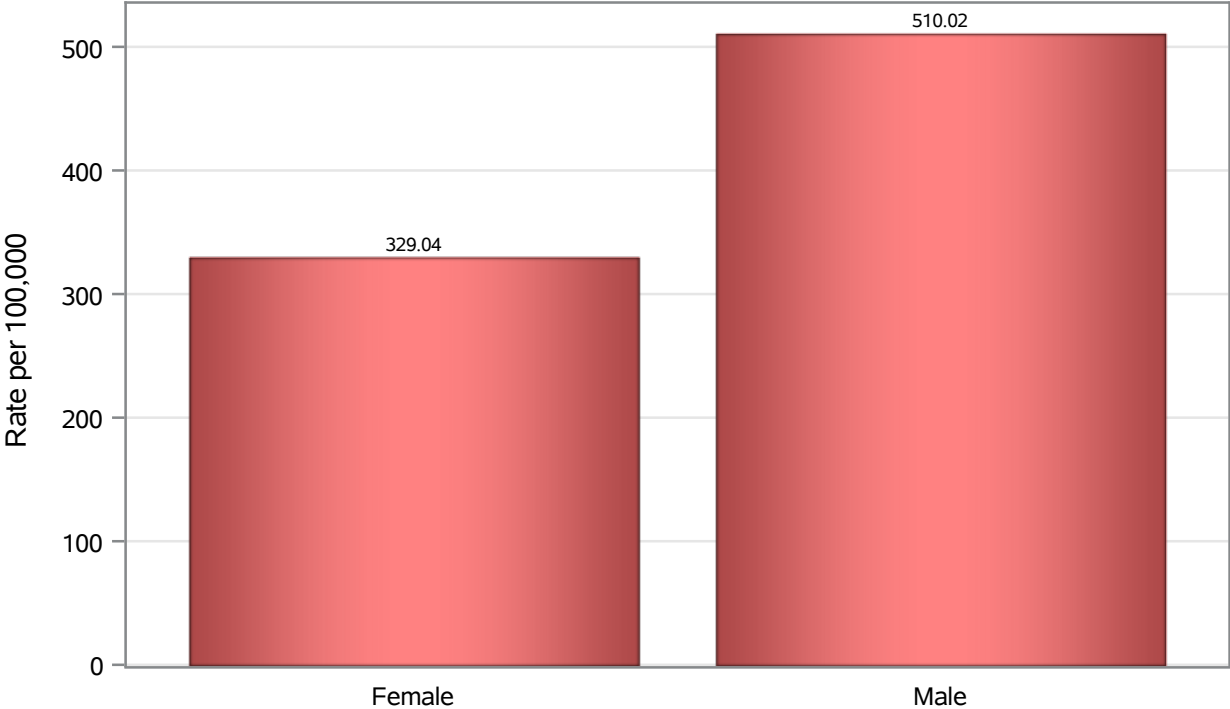
Hospitalization Birth Sex Rates in Henderson



Investigations are ongoing; data are subject to change.
Reporting through 19DEC2022

Henderson zip codes include 89002, 89011, 89012, 89014, 89015, 89044, 89052, 89074, 89119, 89120, 89122, 89123, 89124, 89183.

Death Birth Sex Rates in Henderson



Investigations are ongoing; data are subject to change.
Reporting through 19DEC2022

Henderson zip codes include 89002, 89011, 89012, 89014, 89015, 89044, 89052, 89074, 89119, 89120, 89122, 89123, 89124, 89183.

Table 7: Birth Sex and COVID19 in Henderson

Case Status	Birth Sex Categories	N	%	Population	Rate per 100,000
Cases	Female	66256	52.4	266833	24831
	Male	59379	46.9	264892	22416
	Unknown	853	0.7	.	.
Hospitalizations	Female	3145	44.8	266833	1178.6
	Male	3871	55.1	264892	1461.4
	Unknown	11	0.2	.	.
Deaths	Female	878	39.4	266833	329.04
	Male	1351	60.6	264892	510.02

Note1: Population data source for calculating rate estimates: U.S. Census Bureau, ACS 5-year estimate.

Note2: Rates for categories with fewer than 12 cases are suppressed due to high relative standard error.

Note3: Hospitalizations are regardless of deceased status; Deaths are regardless of hospitalization status

Investigations are ongoing; data are subject to change.

Reporting through 19DEC2022

Henderson zip codes include 89002, 89011, 89012, 89014, 89015, 89044, 89052, 89074, 89119, 89120, 89122, 89123, 89124, 89183.