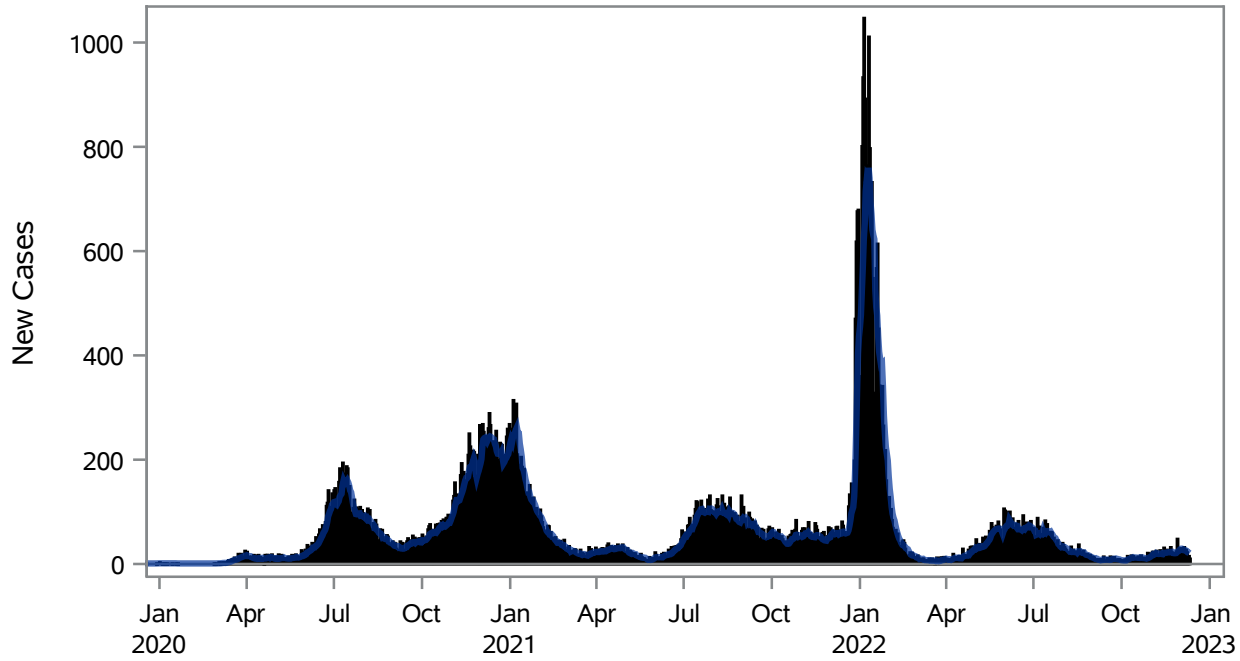


COVID19 Cases for North Las Vegas, 7-Day Moving Average



■ New Cases — 7-Day Moving Average

Investigations are ongoing; data are subject to change.

Reporting through 12DEC2022

North Las Vegas zip codes include 89030, 89031, 89032, 89033, 89036, 89081, 89084, 89085, 89086, 89087.

Table 1: New COVID19 Cases and 7-Day Moving Average in North Las Vegas, Previous Two Weeks

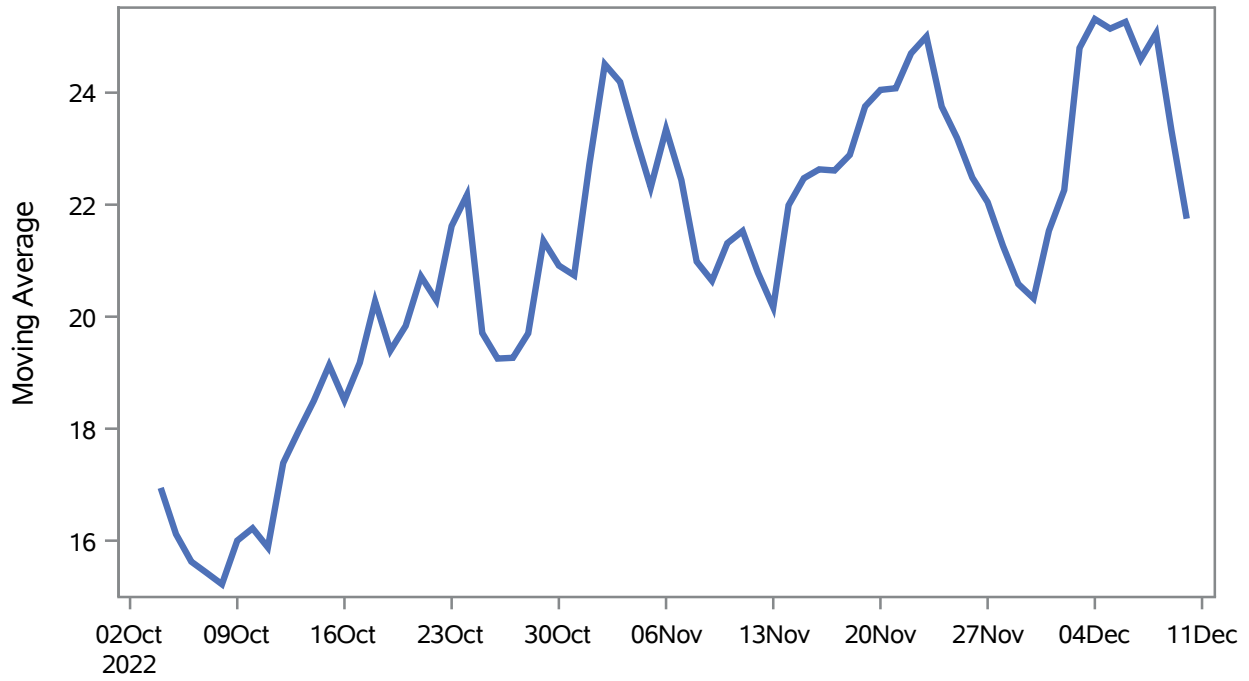
Date (Daily)	New Cases	7-Day Moving Average
29NOV2022	29	24.14
30NOV2022	27	25.29
01DEC2022	29	27.86
02DEC2022	30	29.14
03DEC2022	18	29.29
04DEC2022	20	28.71
05DEC2022	32	26.43
06DEC2022	27	26.14
07DEC2022	27	26.14
08DEC2022	22	25.14
09DEC2022	11	22.43
10DEC2022	15	22.00

Note1: Event Date is calculated as follows based on completed information:
1) Disease onset date 2) Disease diagnosis date 3) Lab result collection date 4) Report date to SNHD.

**Investigations are ongoing; data are subject to change.
Reporting through 12DEC2022**

North Las Vegas zip codes include 89030, 89031, 89032, 89033, 89036, 89081, 89084, 89085, 89086, 89087.

Percent of People Receiving COVID-19 Viral Tests Who Have Positive Results in North Las Vegas



Investigations are ongoing; data are subject to change.

Reporting through 12DEC2022

North Las Vegas zip codes include 89030, 89031, 89032, 89033, 89036, 89081, 89084, 89085, 89086, 89087.

Table 2: Percent of People Receiving COVID-19 Viral Tests Who Have Positive Results in North Las Vegas

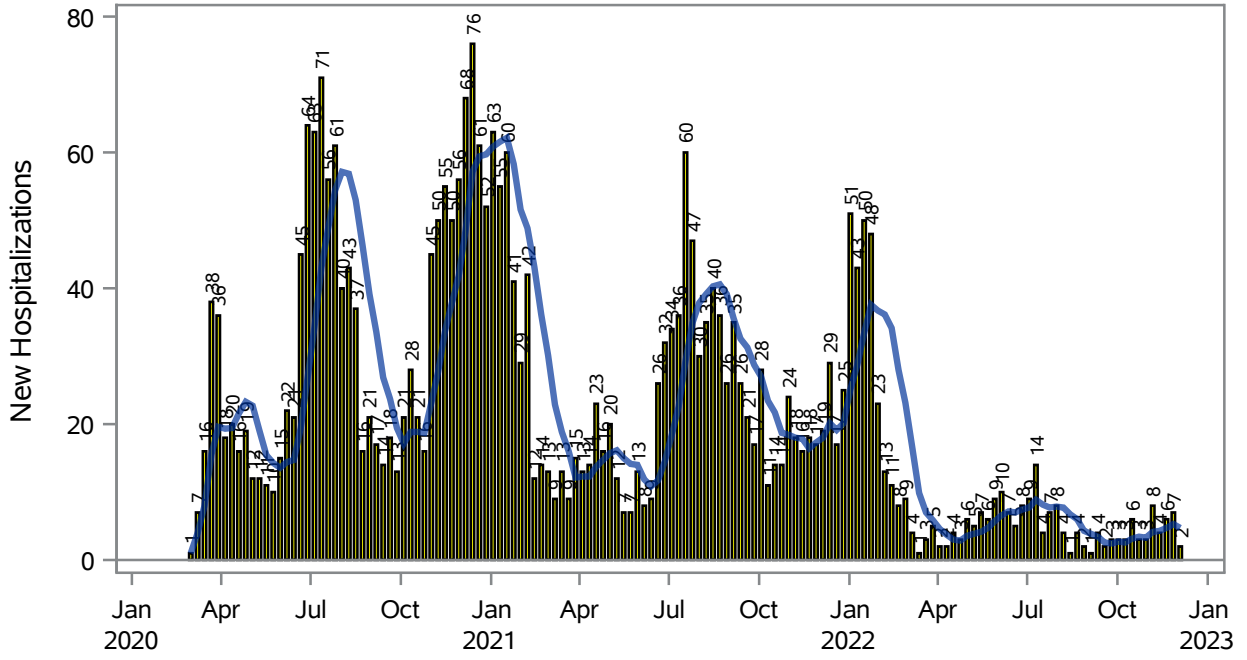
Collection Date	Positive	Negative	Equivocal	Total	% Positivity	7-Day Moving Average
26NOV2022	25	113		138	18.12	22.5
27NOV2022	34	121		155	21.94	22.0
28NOV2022	61	203	2	266	22.93	21.3
29NOV2022	44	208		252	17.46	20.6
30NOV2022	51	171		222	22.97	20.3
01DEC2022	46	147		193	23.83	21.5
02DEC2022	52	128	2	182	28.57	22.3
03DEC2022	47	84		131	35.88	24.8
04DEC2022	35	102		137	25.55	25.3
05DEC2022	50	180		230	21.74	25.1
06DEC2022	41	182	1	224	18.30	25.3
07DEC2022	61	272		333	18.32	24.6
08DEC2022	46	124		170	27.06	25.1
09DEC2022	38	193		231	16.45	23.3
10DEC2022	36	109		145	24.83	21.7

Note: Testing Data includes a 3 day delay

**Investigations are ongoing; data are subject to change.
Reporting through 12DEC2022**

North Las Vegas zip codes include 89030, 89031, 89032, 89033, 89036, 89081, 89084, 89085, 89086, 89087.

COVID19 Hospitalizations for North Las Vegas, 7-Day Moving Average



■ New Hospitalizations — 7-Day Moving Average

Investigations are ongoing; data are subject to change.

Reporting through 12DEC2022

North Las Vegas zip codes include 89030, 89031, 89032, 89033, 89036, 89081, 89084, 89085, 89086, 89087.

Table 3: New COVID19-Related Hospitalizations and 7-Day Moving Average in North Las Vegas, previous month

Week	Hospitalizations	7-Day Moving Average
13NOV2022	4	4.29
20NOV2022	6	4.71
27NOV2022	7	5.29
04DEC2022	2	4.71

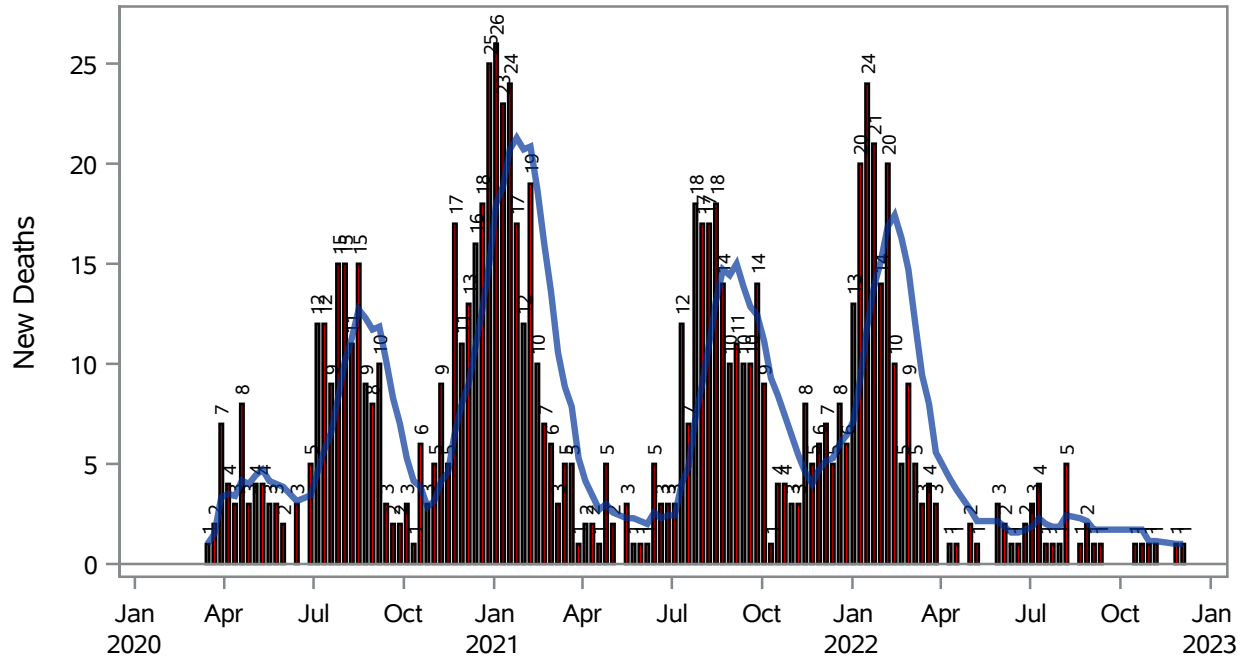
Note1: Admission Date is calculated as follows based on completed information:
A) COVID19 Case is hospitalized B) COVID19 Case has a hospital admission date.

If admission date is missing, then the following is substituted temporarily, in order:
1) Disease onset date 2) Disease diagnosis date 3) Lab result collection date 4) Report date to SNHD.

**Investigations are ongoing; data are subject to change.
Reporting through 12DEC2022**

North Las Vegas zip codes include 89030, 89031, 89032, 89033, 89036, 89081, 89084, 89085, 89086, 89087.

COVID19 Deaths for North Las Vegas, 7-Day Moving Average



■ New Deaths — 7-Day Moving Average

Investigations are ongoing; data are subject to change.

Reporting through 12DEC2022

North Las Vegas zip codes include 89030, 89031, 89032, 89033, 89036, 89081, 89084, 89085, 89086, 89087.

Table 4: New COVID19-Related Deaths and 7-Day Moving Average in North Las Vegas, Previous Month

Week	Deaths	7-Day Moving Average
27NOV2022	1	1.00
04DEC2022	1	1.00

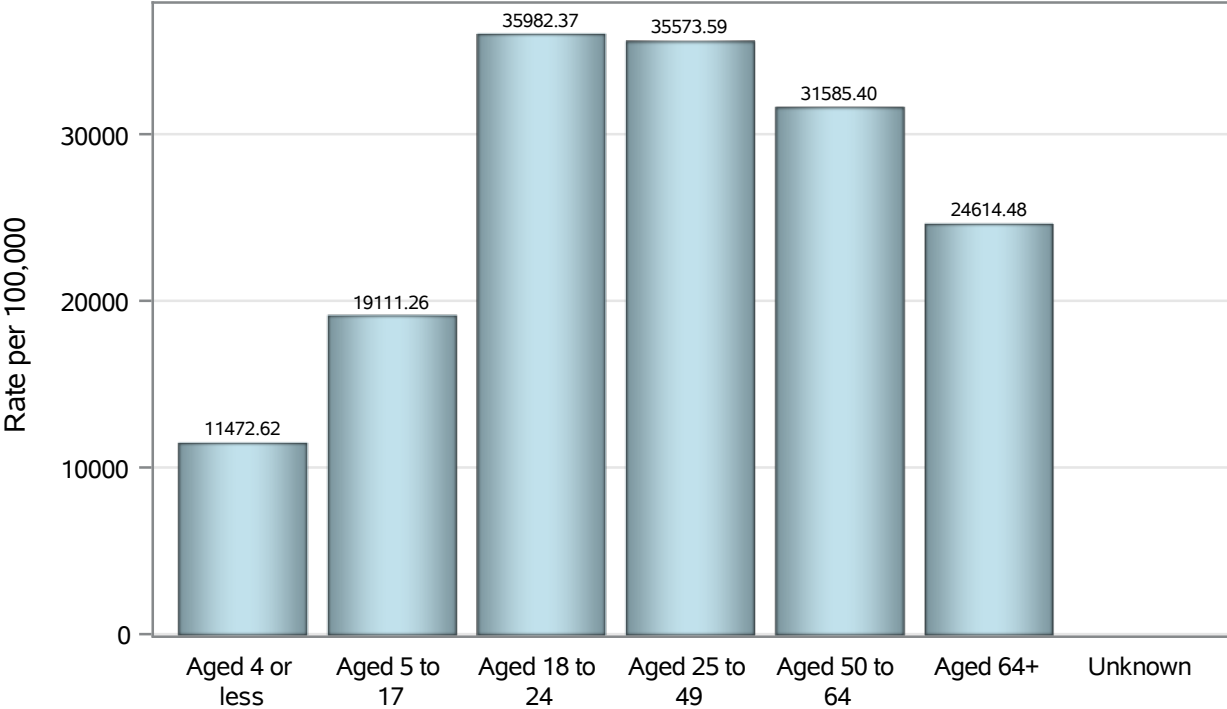
Note1: Date of Death is calculated as follows based on completed information:
A) COVID19 Case is reported as deceased B) COVID19 Case has a reported date of death.

If date of death is missing, then the following is substituted temporarily, in order:
1) Disease onset date 2) Disease diagnosis date
3) Lab result collection date 4) Report date to SNHD.

**Investigations are ongoing; data are subject to change.
Reporting through 12DEC2022**

North Las Vegas zip codes include 89030, 89031, 89032, 89033, 89036, 89081, 89084, 89085, 89086, 89087.

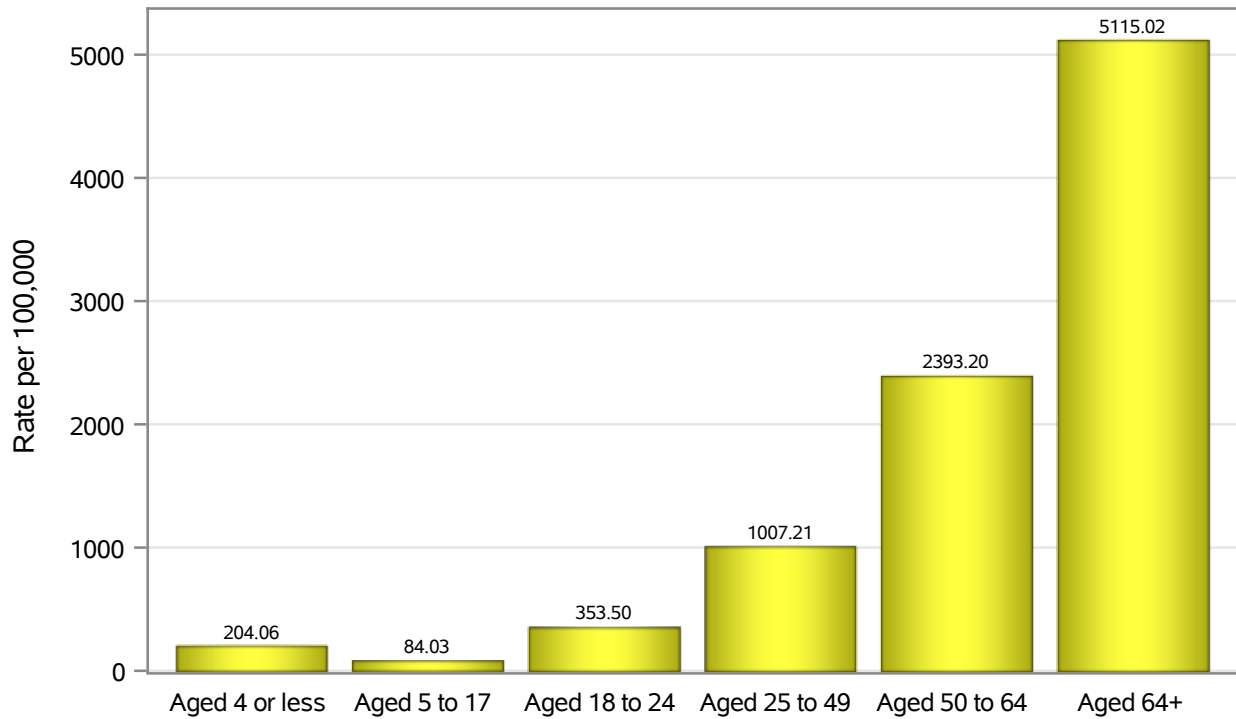
Case Age Rates in North Las Vegas



Investigations are ongoing; data are subject to change.
Reporting through 12DEC2022

North Las Vegas zip codes include 89030, 89031, 89032, 89033, 89036, 89081, 89084, 89085, 89086, 89087.

Hospitalization Age Rates in North Las Vegas

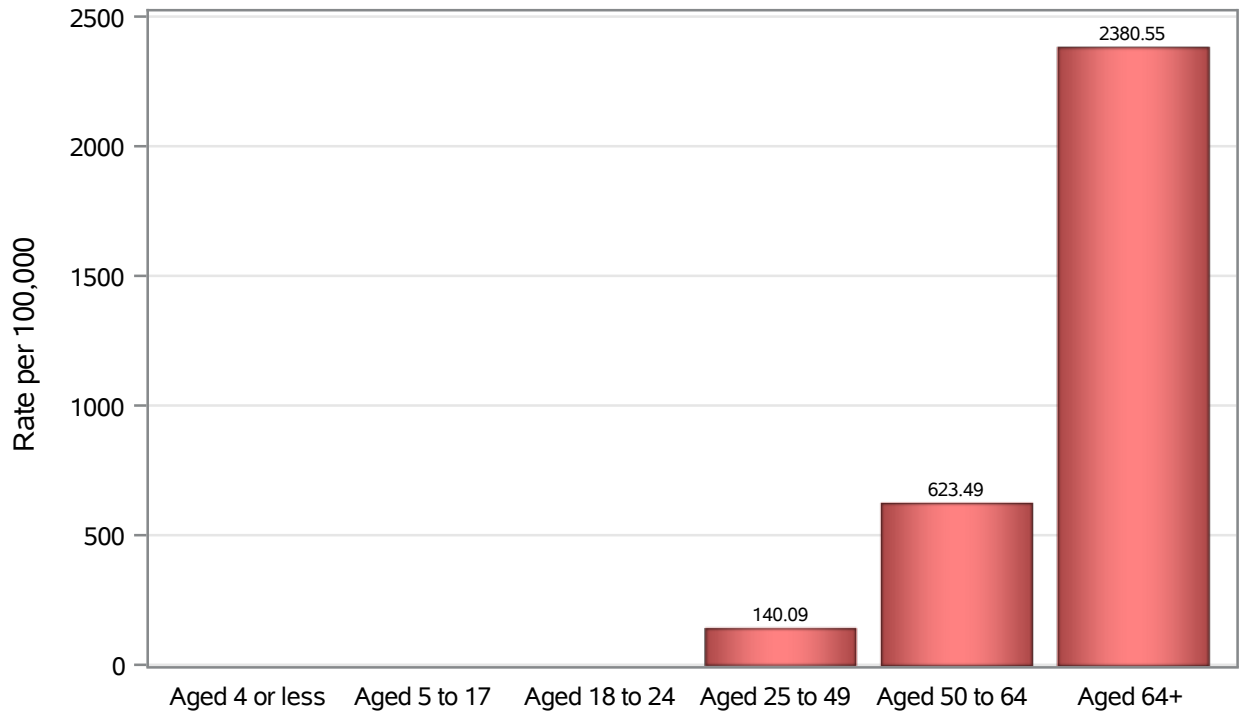


Investigations are ongoing; data are subject to change.

Reporting through 12DEC2022

North Las Vegas zip codes include 89030, 89031, 89032, 89033, 89036, 89081, 89084, 89085, 89086, 89087.

Death Age Rates in North Las Vegas



Investigations are ongoing; data are subject to change.

Reporting through 12DEC2022

North Las Vegas zip codes include 89030, 89031, 89032, 89033, 89036, 89081, 89084, 89085, 89086, 89087.

Table 5: Age and COVID19 in North Las Vegas

Case Status	Age Categories	N	%	Population	Rate per 100,000
Cases	Aged 4 or less	2024	3.0	17,642	11473
	Aged 5 to 17	9552	14.3	49,981	19111
	Aged 18 to 24	8245	12.4	22,914	35982
	Aged 25 to 49	29456	44.1	82,803	35574
	Aged 50 to 64	11601	17.4	36,729	31585
	Aged 64+	5842	8.8	23,734	24614
	Unknown	14	0.0	.	.
Hospitalizations	Aged 4 or less	36	1.2	17,642	204.06
	Aged 5 to 17	42	1.4	49,981	84.03
	Aged 18 to 24	81	2.6	22,914	353.50
	Aged 25 to 49	834	27.0	82,803	1007.2
	Aged 50 to 64	879	28.5	36,729	2393.2
	Aged 64+	1214	39.3	23,734	5115.0
	Deaths	Aged 4 or less	2	0.2	17,642
Aged 5 to 17		1	0.1	49,981	.
Aged 18 to 24		2	0.2	22,914	.
Aged 25 to 49		116	12.7	82,803	140.09
Aged 50 to 64		229	25.0	36,729	623.49
Aged 64+		565	61.7	23,734	2380.6

Note1: Population data source for calculating rate estimates: U.S. Census Bureau, ACS 5-year estimate.

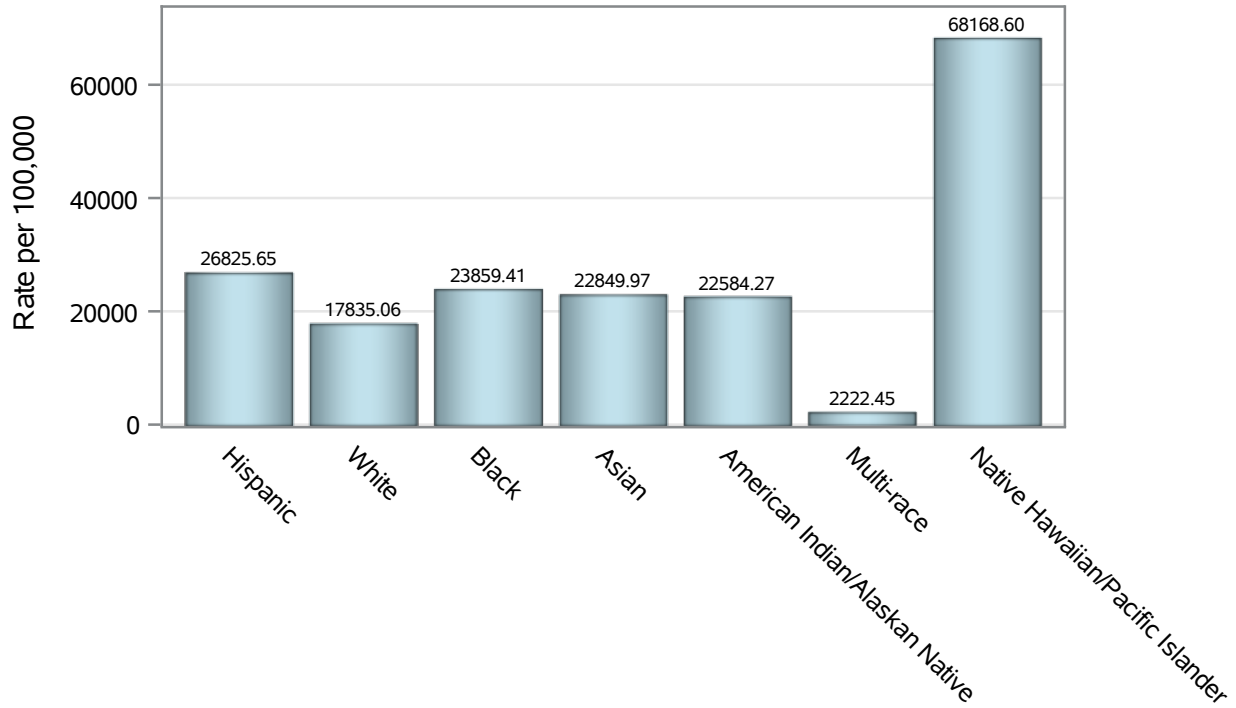
Note2: Rates for categories with fewer than 12 cases are suppressed due to high relative standard error.

Note3: Hospitalizations are regardless of deceased status; Deaths are regardless of hospitalization status

**Investigations are ongoing; data are subject to change.
Reporting through 12DEC2022**

North Las Vegas zip codes include 89030, 89031, 89032, 89033, 89036, 89081, 89084, 89085, 89086, 89087.

Case Race/Ethnicity Rates in North Las Vegas

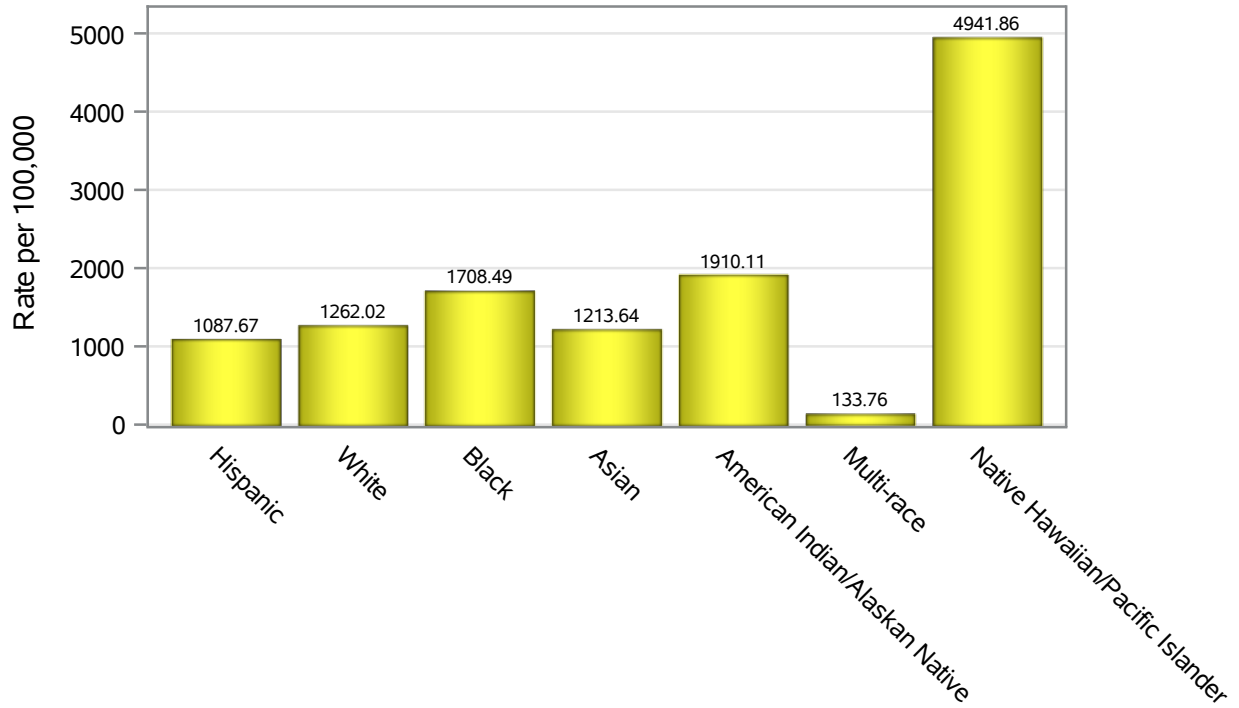


Investigations are ongoing; data are subject to change.

Reporting through 12DEC2022

North Las Vegas zip codes include 89030, 89031, 89032, 89033, 89036, 89081, 89084, 89085, 89086, 89087.

Hospitalization Race/Ethnicity Rates in North Las Vegas

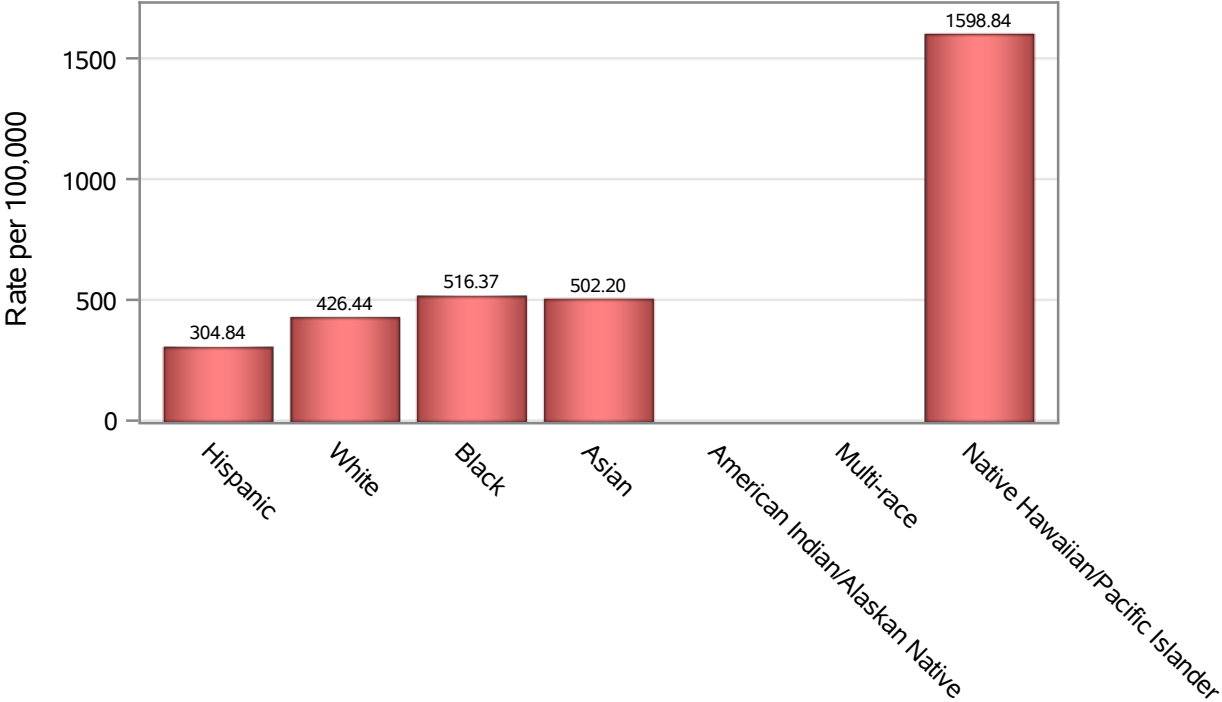


Investigations are ongoing; data are subject to change.

Reporting through 12DEC2022

North Las Vegas zip codes include 89030, 89031, 89032, 89033, 89036, 89081, 89084, 89085, 89086, 89087.

Death Race/Ethnicity Rates in North Las Vegas



Investigations are ongoing; data are subject to change.

Reporting through 12DEC2022

North Las Vegas zip codes include 89030, 89031, 89032, 89033, 89036, 89081, 89084, 89085, 89086, 89087.

Table 6: Race/Ethnicity and COVID19 in North Las Vegas

Case Status	Race Ethnicity Categories	N	%	Population	Rate per 100,000
Cases	Hispanic	25872	38.8	96,445	26826
	White	11334	17.0	63,549	17835
	Black	11228	16.8	47,059	23859
	Asian	3276	4.9	14,337	22850
	American Indian/Alaskan Native	201	0.3	890	22584
	Multi-race	216	0.3	9,719	2222.5
	Native Hawaiian/Pacific Islander	938	1.4	1,376	68169
	Unknown	13669	20.5	.	.
Hospitalizations	Hispanic	1049	34.0	96,445	1087.7
	White	802	26.0	63,549	1262.0
	Black	804	26.1	47,059	1708.5
	Asian	174	5.6	14,337	1213.6
	American Indian/Alaskan Native	17	0.6	890	1910.1
	Multi-race	13	0.4	9,719	133.76
	Native Hawaiian/Pacific Islander	68	2.2	1,376	4941.9
	Unknown	159	5.2	.	.
Deaths	Hispanic	294	32.1	96,445	304.84
	White	271	29.6	63,549	426.44
	Black	243	26.6	47,059	516.37
	Asian	72	7.9	14,337	502.20
	American Indian/Alaskan Native	6	0.7	890	.
	Multi-race	7	0.8	9,719	.
	Native Hawaiian/Pacific Islander	22	2.4	1,376	1598.8

Note1: Population data source for calculating rate estimates: U.S. Census Bureau, ACS 5-year estimate.

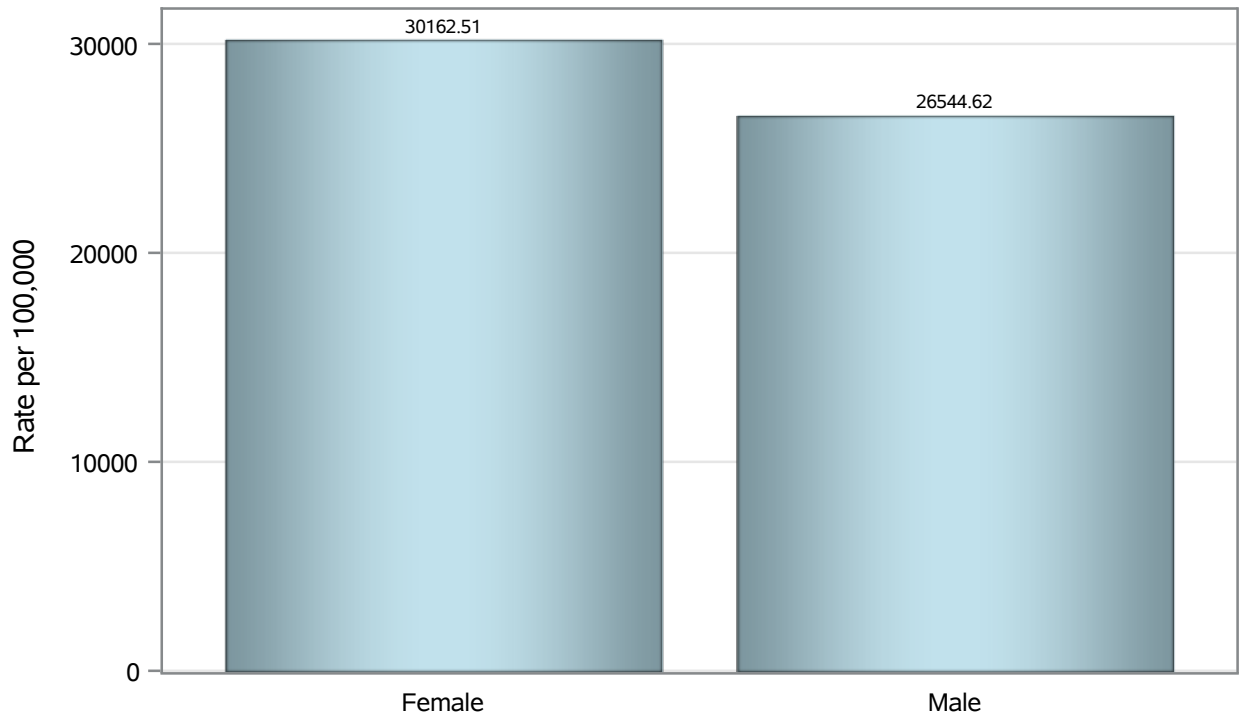
Note2: Rates for categories with fewer than 12 cases are suppressed due to high relative standard error.

Note3: Hospitalizations are regardless of deceased status; Deaths are regardless of hospitalization status

**Investigations are ongoing; data are subject to change.
Reporting through 12DEC2022**

North Las Vegas zip codes include 89030, 89031, 89032, 89033, 89036, 89081, 89084, 89085, 89086, 89087.

Case Birth Sex Rates in North Las Vegas

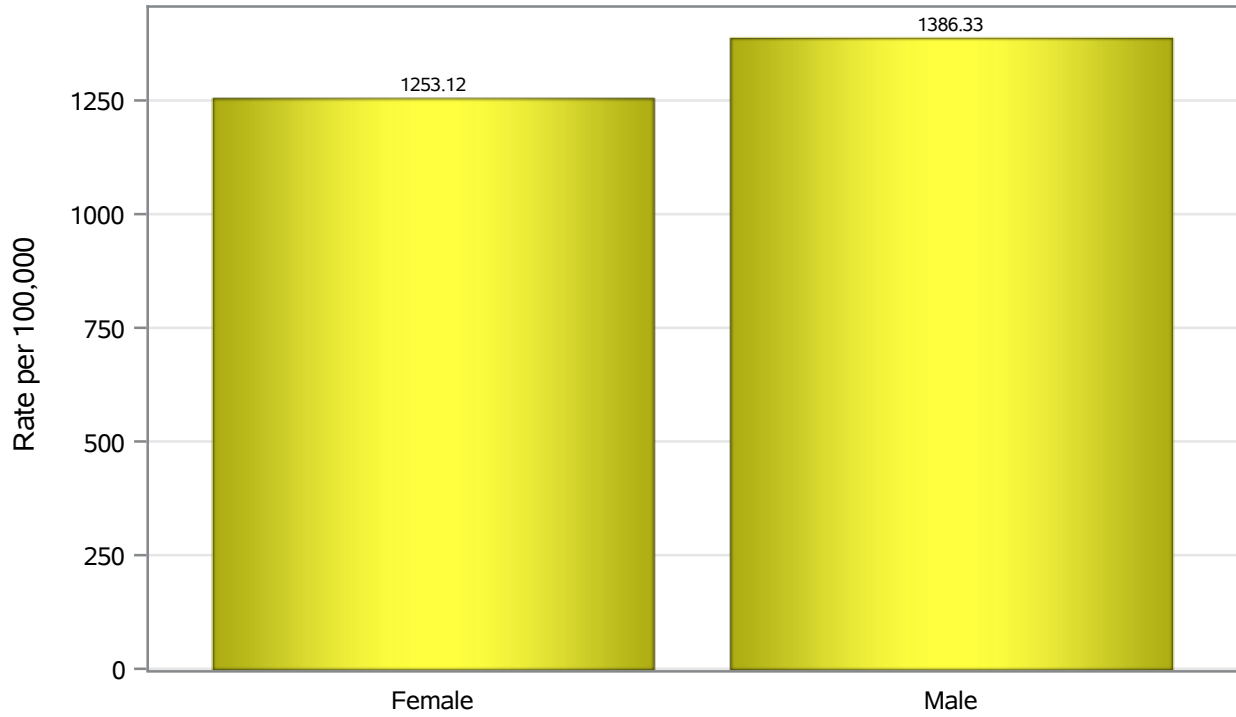


Investigations are ongoing; data are subject to change.

Reporting through 12DEC2022

North Las Vegas zip codes include 89030, 89031, 89032, 89033, 89036, 89081, 89084, 89085, 89086, 89087.

Hospitalization Birth Sex Rates in North Las Vegas

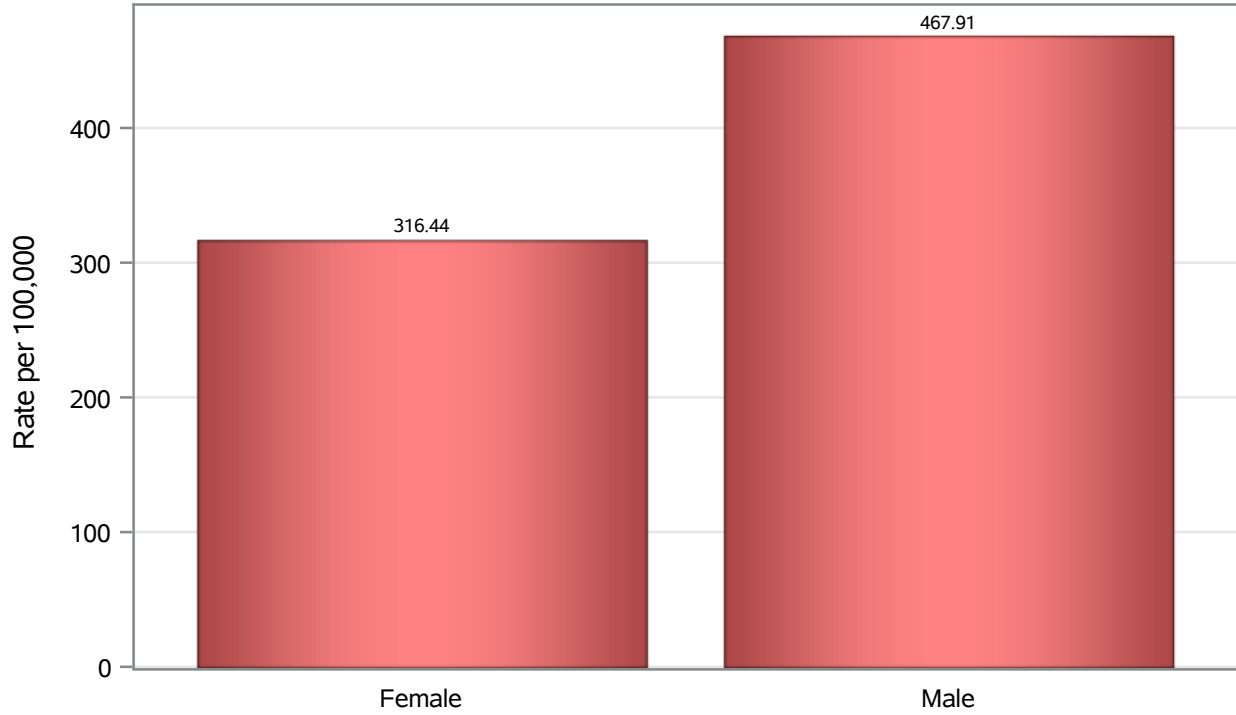


Investigations are ongoing; data are subject to change.

Reporting through 12DEC2022

North Las Vegas zip codes include 89030, 89031, 89032, 89033, 89036, 89081, 89084, 89085, 89086, 89087.

Death Birth Sex Rates in North Las Vegas



Investigations are ongoing; data are subject to change.

Reporting through 12DEC2022

North Las Vegas zip codes include 89030, 89031, 89032, 89033, 89036, 89081, 89084, 89085, 89086, 89087.

Table 7: Birth Sex and COVID19 in North Las Vegas

Case Status	Birth Sex Categories	N	%	Population	Rate per 100,000
Cases	Female	35840	53.7	118823	30163
	Male	30521	45.7	114980	26545
	Unknown	373	0.6	.	.
Hospitalizations	Female	1489	48.3	118823	1253.1
	Male	1594	51.7	114980	1386.3
	Unknown	3	0.1	.	.
Deaths	Female	376	41.1	118823	316.44
	Male	538	58.8	114980	467.91
	Unknown	1	0.1	.	.

Note1: Population data source for calculating rate estimates: U.S. Census Bureau, ACS 5-year estimate.

Note2: Rates for categories with fewer than 12 cases are suppressed due to high relative standard error.

Note3: Hospitalizations are regardless of deceased status; Deaths are regardless of hospitalization status

**Investigations are ongoing; data are subject to change.
Reporting through 12DEC2022**

North Las Vegas zip codes include 89030, 89031, 89032, 89033, 89036, 89081, 89084, 89085, 89086, 89087.