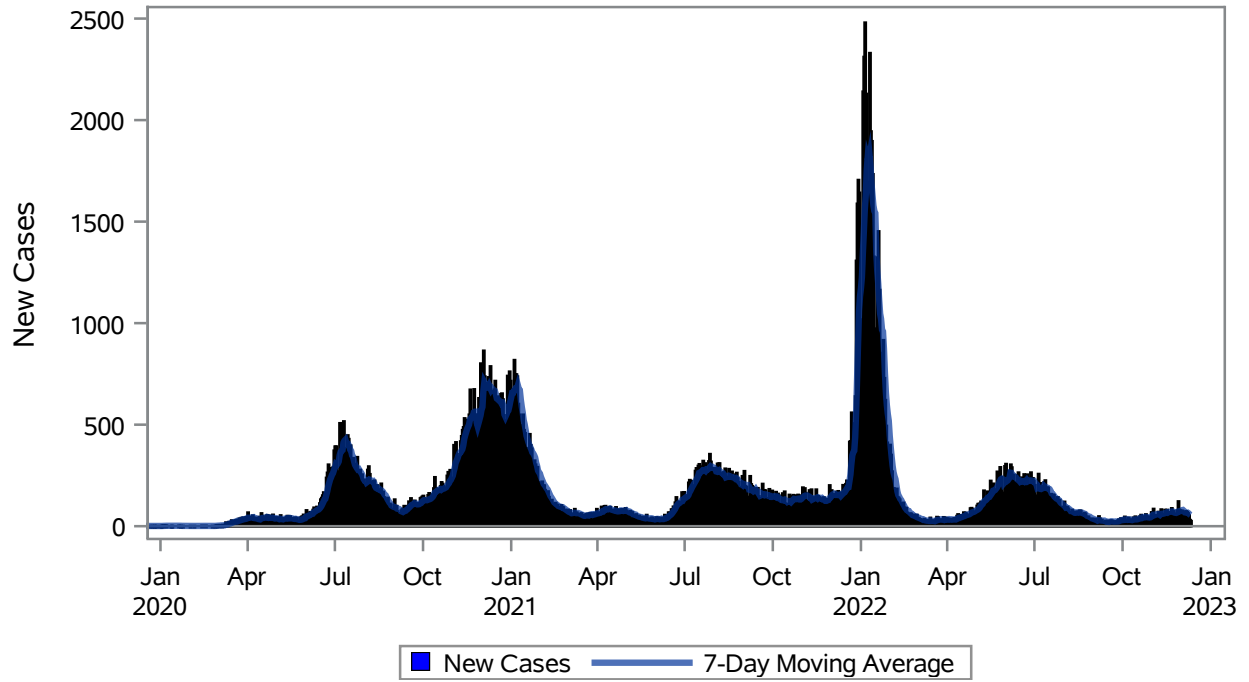


### COVID19 Cases for Las Vegas, 7-Day Moving Average



Investigations are ongoing; data are subject to change.

Reporting through 12DEC2022

Las Vegas zip codes include 89101, 89102, 89104, 89106, 89108, 89109, 89110, 89117, 89129, 89130, 89131, 89143, 89146, 89149, 89166, 89145, 89144, 89134, 89107, 89128, 89138.

**Table 1: New COVID19 Cases and 7-Day Moving Average in Las Vegas, Previous Two Weeks**

Date (Daily)	New Cases	7-Day Moving Average
29NOV2022	80	72.86
30NOV2022	77	73.43
01DEC2022	60	76.71
02DEC2022	76	78.86
03DEC2022	67	79.86
04DEC2022	47	75.57
05DEC2022	71	68.29
06DEC2022	73	67.29
07DEC2022	69	66.14
08DEC2022	63	66.57
09DEC2022	53	63.29
10DEC2022	30	58.00

---

Note1: Event Date is calculated as follows based on completed information:  
1) Disease onset date 2) Disease diagnosis date 3) Lab result collection date 4) Report date to SNHD.

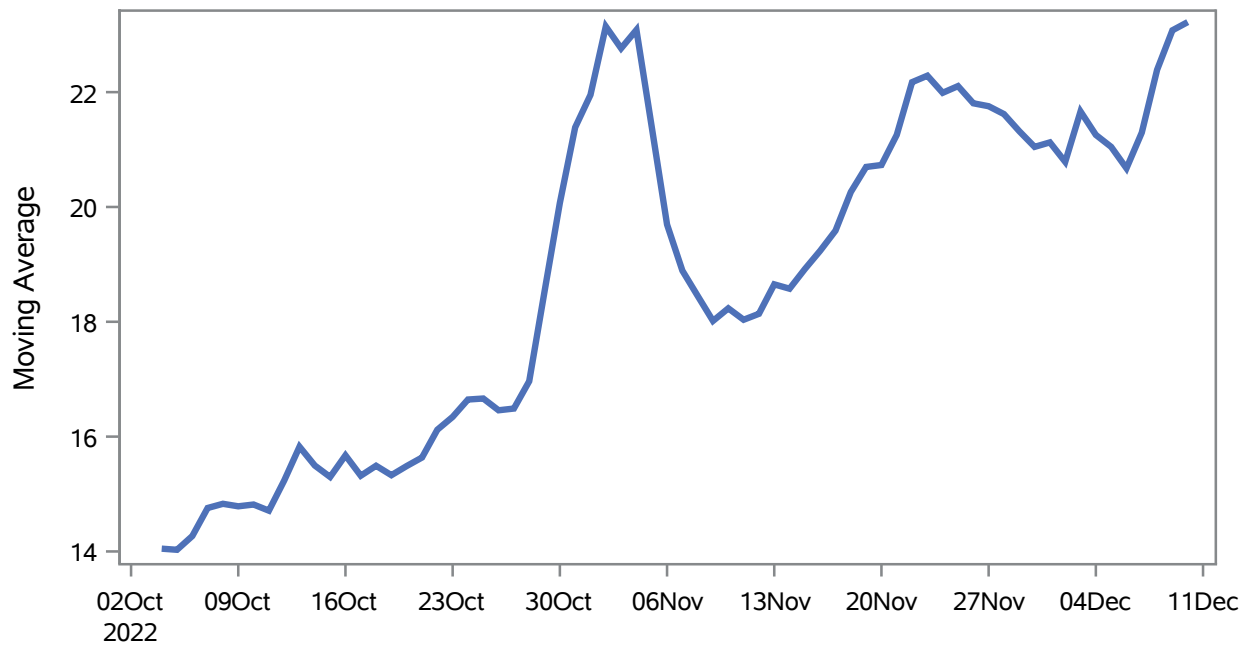
---

**Investigations are ongoing; data are subject to change.**

**Reporting through 12DEC2022**

**Las Vegas zip codes include 89101, 89102, 89104, 89106, 89108, 89109, 89110, 89117, 89129, 89130, 89131, 89143, 89146, 89149, 89166, 89145, 89144, 89134, 89107, 89128, 89138.**

### Percent of People Receiving COVID-19 Viral Tests Who Have Positive Results in Las Vegas



Investigations are ongoing; data are subject to change.

Reporting through 12DEC2022

Las Vegas zip codes include 89101, 89102, 89104, 89106, 89108, 89109, 89110, 89117, 89129, 89130, 89131, 89143, 89146, 89149, 89166, 89145, 89144, 89134, 89107, 89128, 89138.

**Table 2: Percent of People Receiving COVID-19 Viral Tests Who Have Positive Results in Las Vegas**

Collection Date	Positive	Negative	Equivocal	Total	% Positivity	7-Day Moving Average
26NOV2022	166	659	1	826	20.10	21.8
27NOV2022	232	779		1011	22.95	21.8
28NOV2022	341	1308	1	1650	20.67	21.6
29NOV2022	318	1176	3	1497	21.24	21.3
30NOV2022	249	979	2	1230	20.24	21.0
01DEC2022	220	1031		1251	17.59	21.1
02DEC2022	261	888		1149	22.72	20.8
03DEC2022	217	610		827	26.24	21.7
04DEC2022	173	688		861	20.09	21.3
05DEC2022	296	1243	2	1541	19.21	21.0
06DEC2022	258	1124	3	1385	18.63	20.7
07DEC2022	321	982	2	1305	24.60	21.3
08DEC2022	341	1009	1	1351	25.24	22.4
09DEC2022	307	808		1115	27.53	23.1
10DEC2022	219	584	1	804	27.24	23.2

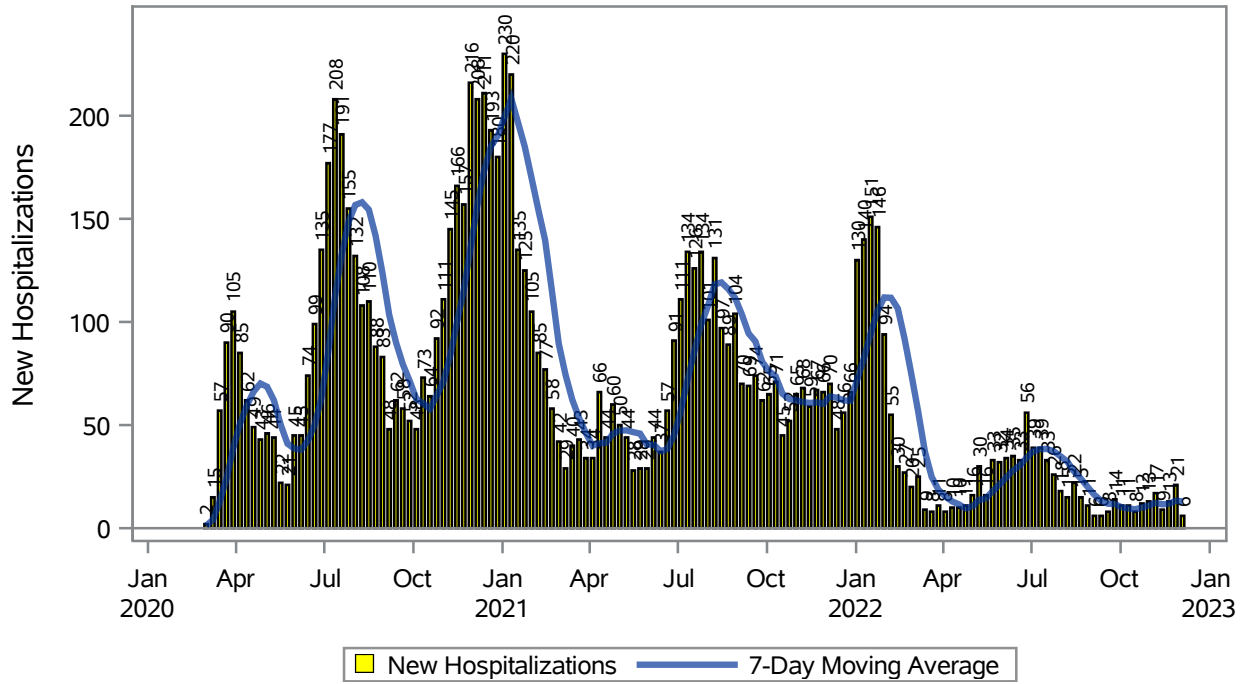
Note: Testing Data includes a 3 day delay

**Investigations are ongoing; data are subject to change.**

**Reporting through 12DEC2022**

**Las Vegas zip codes include 89101, 89102, 89104, 89106, 89108, 89109, 89110, 89117, 89129, 89130, 89131, 89143, 89146, 89149, 89166, 89145, 89144, 89134, 89107, 89128, 89138.**

## COVID19 Hospitalizations for Las Vegas, 7-Day Moving Average



Investigations are ongoing; data are subject to change.

Reporting through 12DEC2022

Las Vegas zip codes include 89101, 89102, 89104, 89106, 89108, 89109, 89110, 89117, 89129, 89130, 89131, 89143, 89146, 89149, 89166, 89145, 89144, 89134, 89107, 89128, 89138.

**Table 3: New COVID19-Related Hospitalizations and 7-Day Moving Average in Las Vegas, previous month**

Week	Hospitalizations	7-Day Moving Average
13NOV2022	9	11.6
20NOV2022	13	11.9
27NOV2022	21	13.3
04DEC2022	6	13.0

---

Note1: Admission Date is calculated as follows based on completed information:  
A) COVID19 Case is hospitalized B) COVID19 Case has a hospital admission date.

If admission date is missing, then the following is substituted temporarily, in order:  
1) Disease onset date 2) Disease diagnosis date 3) Lab result collection date 4) Report date to SNHD.

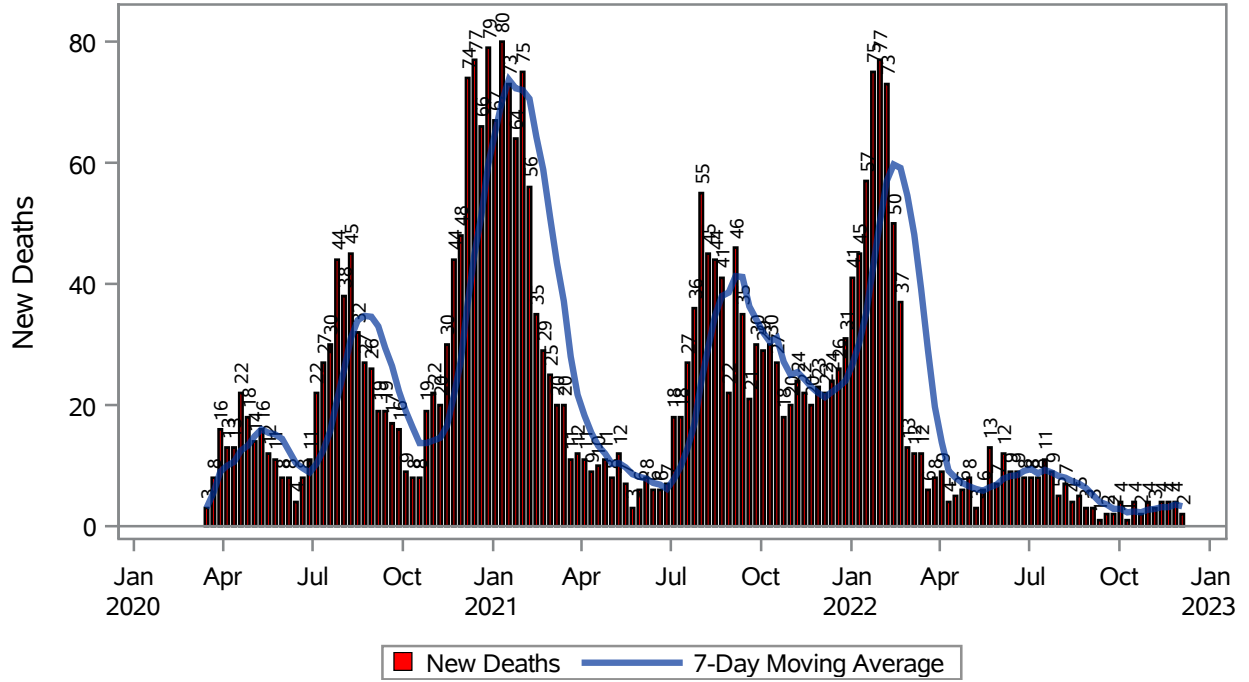
---

**Investigations are ongoing; data are subject to change.**

**Reporting through 12DEC2022**

**Las Vegas zip codes include 89101, 89102, 89104, 89106, 89108, 89109, 89110, 89117, 89129, 89130, 89131, 89143, 89146, 89149, 89166, 89145, 89144, 89134, 89107, 89128, 89138.**

### COVID19 Deaths for Las Vegas, 7-Day Moving Average



Investigations are ongoing; data are subject to change.

Reporting through 12DEC2022

Las Vegas zip codes include 89101, 89102, 89104, 89106, 89108, 89109, 89110, 89117, 89129, 89130, 89131, 89143, 89146, 89149, 89166, 89145, 89144, 89134, 89107, 89128, 89138.

**Table 4: New COVID19-Related Deaths and 7-Day Moving Average in Las Vegas, Previous Month**

Week	Deaths	7-Day Moving Average
13NOV2022	4	3.14
20NOV2022	4	3.14
27NOV2022	4	3.57
04DEC2022	2	3.29

---

Note1: Date of Death is calculated as follows based on completed information:  
A) COVID19 Case is reported as deceased B) COVID19 Case has a reported date of death.

If date of death is missing, then the following is substituted temporarily, in order:  
1) Disease onset date 2) Disease diagnosis date  
3) Lab result collection date 4) Report date to SNHD.

---

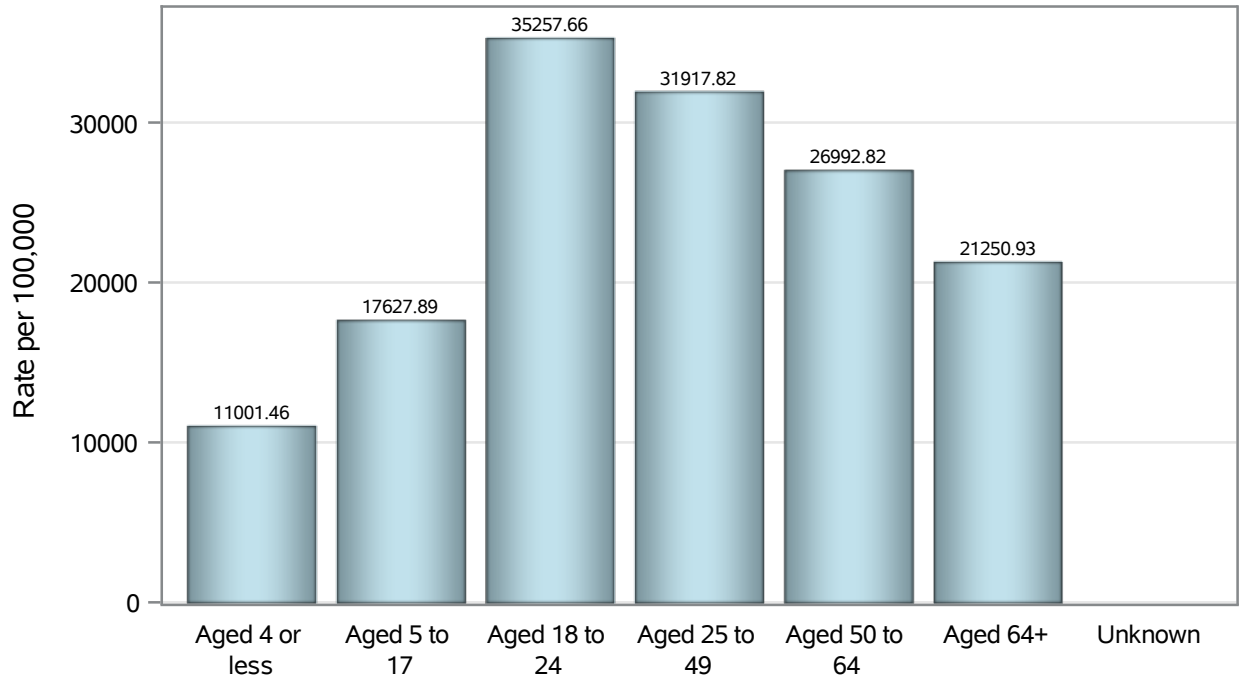
**Investigations are ongoing; data are subject to change.**

**Reporting through 12DEC2022**

**Las Vegas zip codes include 89101, 89102, 89104, 89106, 89108, 89109, 89110, 89117, 89129, 89130, 89131, 89143, 89146, 89149, 89166, 89145, 89144, 89134, 89107, 89128, 89138.**



### Case Age Rates in Las Vegas

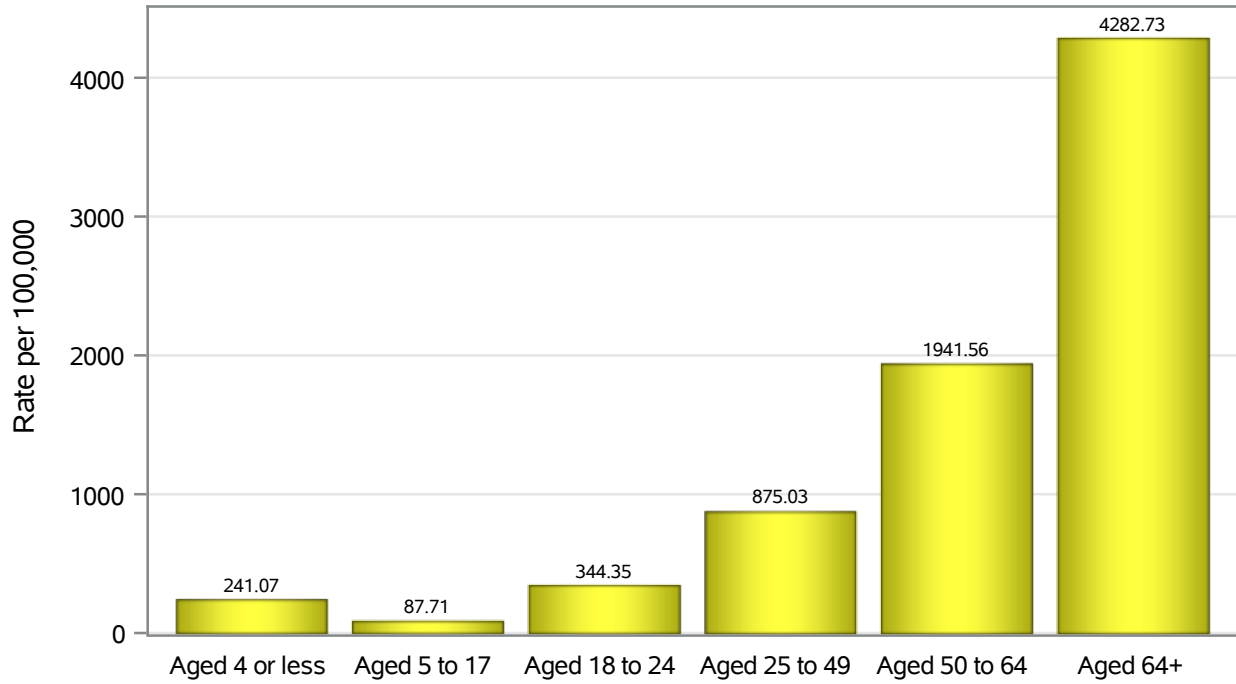


Investigations are ongoing; data are subject to change.

Reporting through 12DEC2022

Las Vegas zip codes include 89101, 89102, 89104, 89106, 89108, 89109, 89110, 89117, 89129, 89130, 89131, 89143, 89146, 89149, 89166, 89145, 89144, 89134, 89107, 89128, 89138.

### Hospitalization Age Rates in Las Vegas

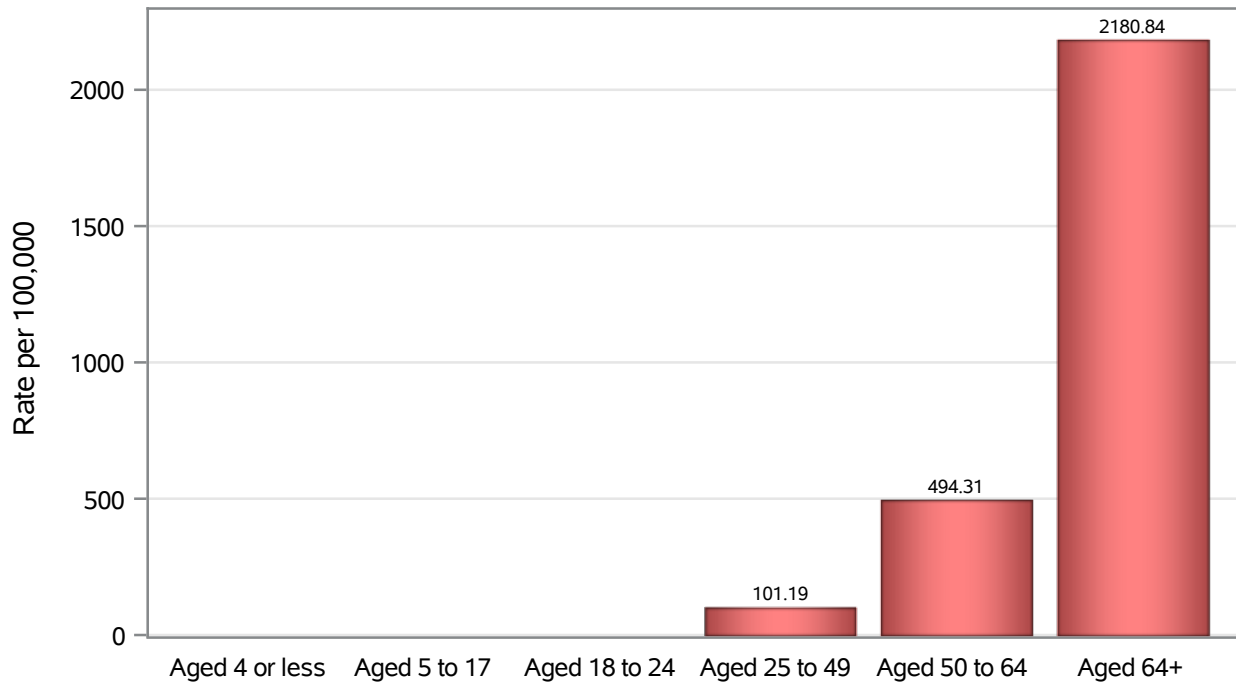


Investigations are ongoing; data are subject to change.

Reporting through 12DEC2022

Las Vegas zip codes include 89101, 89102, 89104, 89106, 89108, 89109, 89110, 89117, 89129, 89130, 89131, 89143, 89146, 89149, 89166, 89145, 89144, 89134, 89107, 89128, 89138.

### Death Age Rates in Las Vegas



Investigations are ongoing; data are subject to change.

Reporting through 12DEC2022

Las Vegas zip codes include 89101, 89102, 89104, 89106, 89108, 89109, 89110, 89117, 89129, 89130, 89131, 89143, 89146, 89149, 89166, 89145, 89144, 89134, 89107, 89128, 89138.

**Table 5: Age and COVID19 in Las Vegas**

Case Status	Age Categories	N	%	Population	Rate per 100,000
Cases	Aged 4 or less	4883	2.7	44,385	11001
	Aged 5 to 17	21906	12.0	124269	17628
	Aged 18 to 24	20478	11.2	58,081	35258
	Aged 25 to 49	77913	42.6	244105	31918
	Aged 50 to 64	35549	19.4	131698	26993
	Aged 64+	22071	12.1	103859	21251
	Unknown	37	0.0	.	.
Hospitalizations	Aged 4 or less	107	1.1	44,385	241.07
	Aged 5 to 17	109	1.1	124269	87.71
	Aged 18 to 24	200	2.1	58,081	344.35
	Aged 25 to 49	2136	22.4	244105	875.03
	Aged 50 to 64	2557	26.8	131698	1941.6
	Aged 64+	4448	46.5	103859	4282.7
	Deaths	Aged 4 or less	1	0.0	44,385
Aged 5 to 17		2	0.1	124269	.
Aged 18 to 24		9	0.3	58,081	.
Aged 25 to 49		247	7.8	244105	101.19
Aged 50 to 64		651	20.5	131698	494.31
Aged 64+		2265	71.3	103859	2180.8

Note1: Population data source for calculating rate estimates: U.S. Census Bureau, ACS 5-year estimate.

Note2: Rates for categories with fewer than 12 cases are suppressed due to high relative standard error.

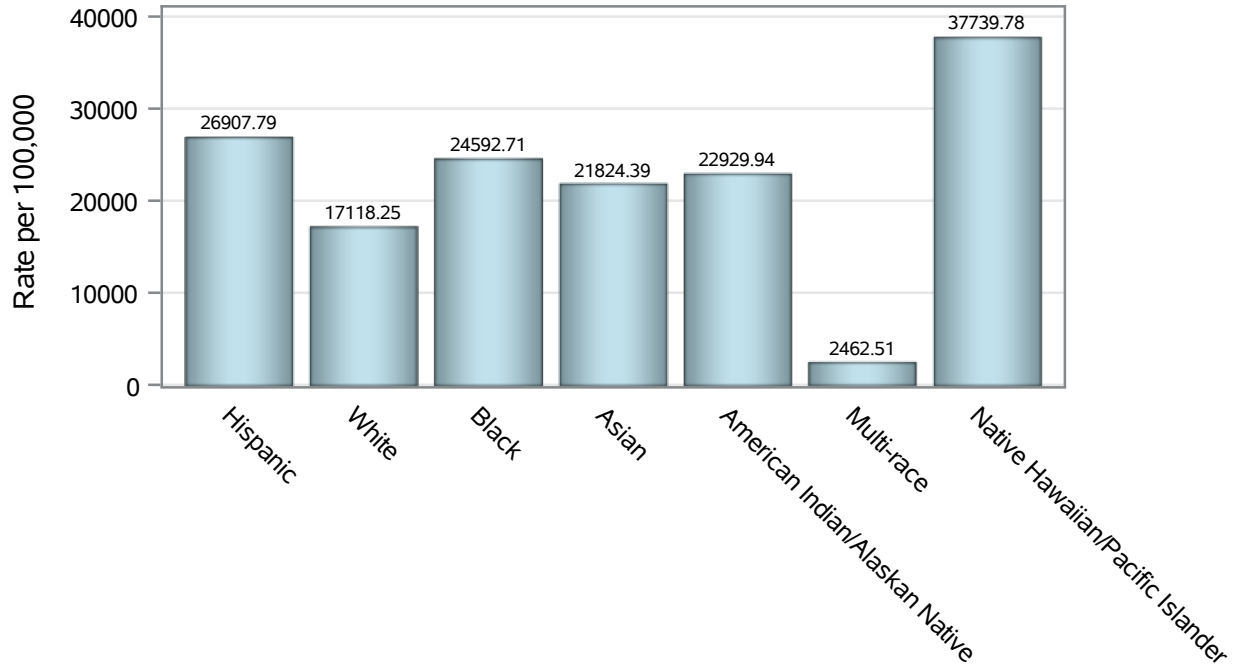
Note3: Hospitalizations are regardless of deceased status; Deaths are regardless of hospitalization status

**Investigations are ongoing; data are subject to change.**

**Reporting through 12DEC2022**

**Las Vegas zip codes include 89101, 89102, 89104, 89106, 89108, 89109, 89110, 89117, 89129, 89130, 89131, 89143, 89146, 89149, 89166, 89145, 89144, 89134, 89107, 89128, 89138.**

### Case Race/Ethnicity Rates in Las Vegas

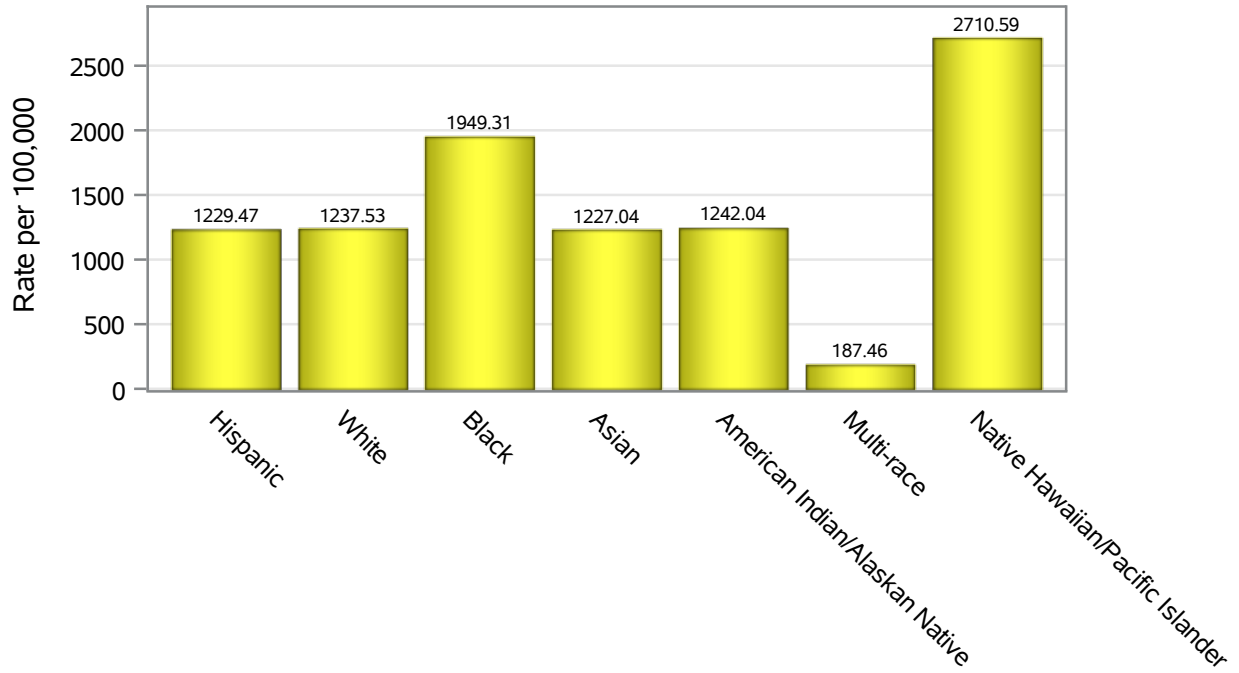


Investigations are ongoing; data are subject to change.

Reporting through 12DEC2022

Las Vegas zip codes include 89101, 89102, 89104, 89106, 89108, 89109, 89110, 89117, 89129, 89130, 89131, 89143, 89146, 89149, 89166, 89145, 89144, 89134, 89107, 89128, 89138.

### Hospitalization Race/Ethnicity Rates in Las Vegas

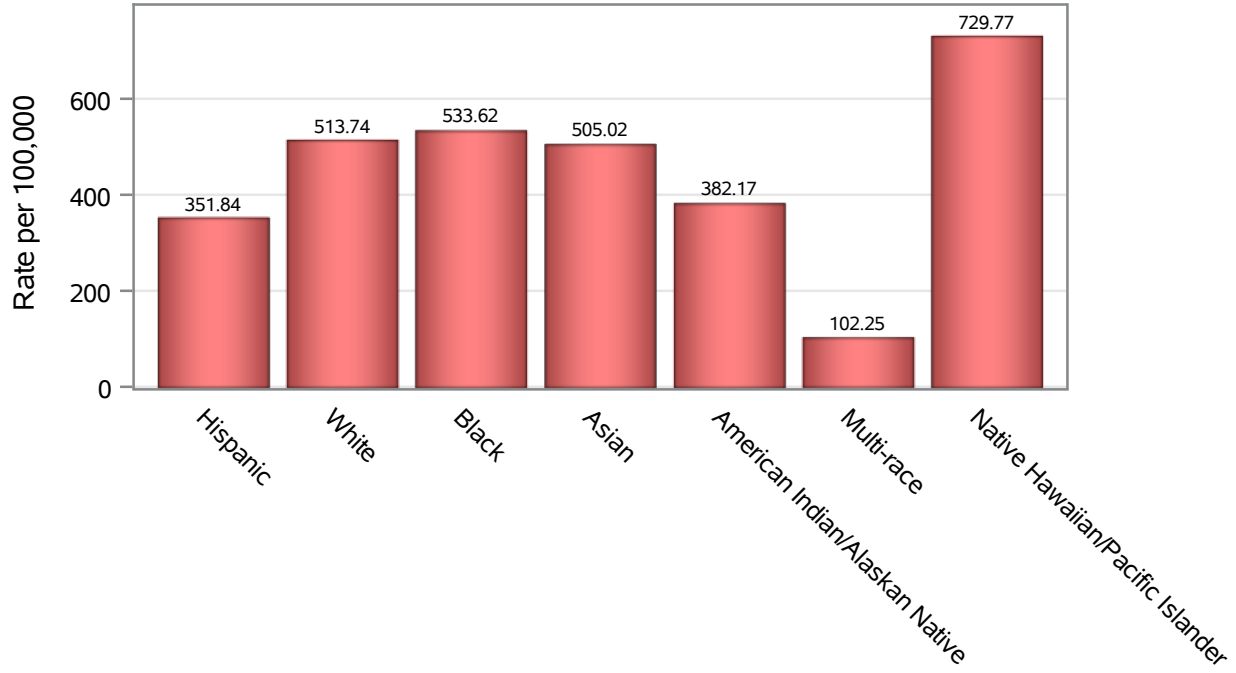


Investigations are ongoing; data are subject to change.

Reporting through 12DEC2022

Las Vegas zip codes include 89101, 89102, 89104, 89106, 89108, 89109, 89110, 89117, 89129, 89130, 89131, 89143, 89146, 89149, 89166, 89145, 89144, 89134, 89107, 89128, 89138.

### Death Race/Ethnicity Rates in Las Vegas



Investigations are ongoing; data are subject to change.

Reporting through 12DEC2022

Las Vegas zip codes include 89101, 89102, 89104, 89106, 89108, 89109, 89110, 89117, 89129, 89130, 89131, 89143, 89146, 89149, 89166, 89145, 89144, 89134, 89107, 89128, 89138.

**Table 6: Race/Ethnicity and COVID19 in Las Vegas**

Case Status	Race Ethnicity Categories	N	%	Population	Rate per 100,000
Cases	Hispanic	61258	33.5	227659	26908
	White	54113	29.6	316113	17118
	Black	19126	10.5	77,771	24593
	Asian	11063	6.1	50,691	21824
	American Indian/Alaskan Native	720	0.4	3,140	22930
	Multi-race	578	0.3	23,472	2462.5
	Native Hawaiian/Pacific Islander	1810	1.0	4,796	37740
	Unknown	34169	18.7	.	.
Hospitalizations	Hispanic	2799	29.3	227659	1229.5
	White	3912	40.9	316113	1237.5
	Black	1516	15.9	77,771	1949.3
	Asian	622	6.5	50,691	1227.0
	American Indian/Alaskan Native	39	0.4	3,140	1242.0
	Multi-race	44	0.5	23,472	187.46
	Native Hawaiian/Pacific Islander	130	1.4	4,796	2710.6
	Unknown	495	5.2	.	.
Deaths	Hispanic	801	25.2	227659	351.84
	White	1624	51.1	316113	513.74
	Black	415	13.1	77,771	533.62
	Asian	256	8.1	50,691	505.02
	American Indian/Alaskan Native	12	0.4	3,140	382.17
	Multi-race	24	0.8	23,472	102.25
	Native Hawaiian/Pacific Islander	35	1.1	4,796	729.77
	Unknown	8	0.3	.	.

Note1: Population data source for calculating rate estimates: U.S. Census Bureau, ACS 5-year estimate.

Note2: Rates for categories with fewer than 12 cases are suppressed due to high relative standard error.

Note3: Hospitalizations are regardless of deceased status; Deaths are regardless of hospitalization status

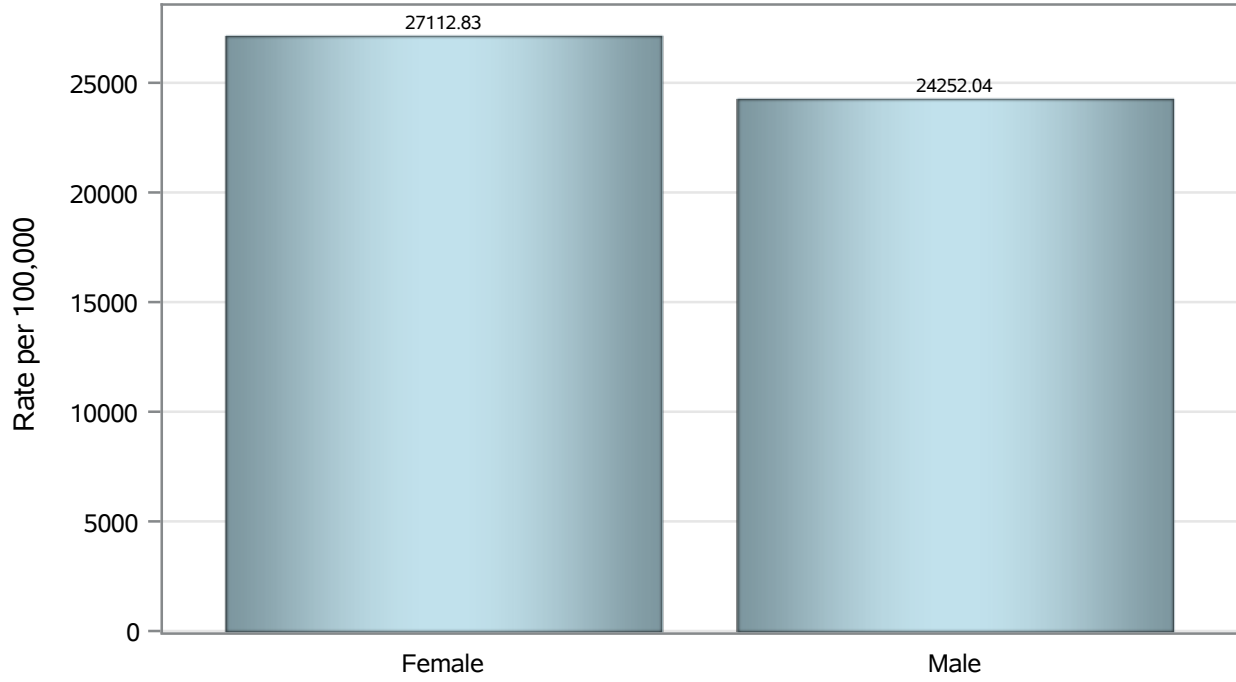
**Investigations are ongoing; data are subject to change.**

**Reporting through 12DEC2022**

**Las Vegas zip codes include 89101, 89102, 89104, 89106, 89108, 89109, 89110, 89117, 89129, 89130, 89131, 89143, 89146, 89149, 89166, 89145, 89144, 89134, 89107, 89128, 89138.**



### Case Birth Sex Rates in Las Vegas

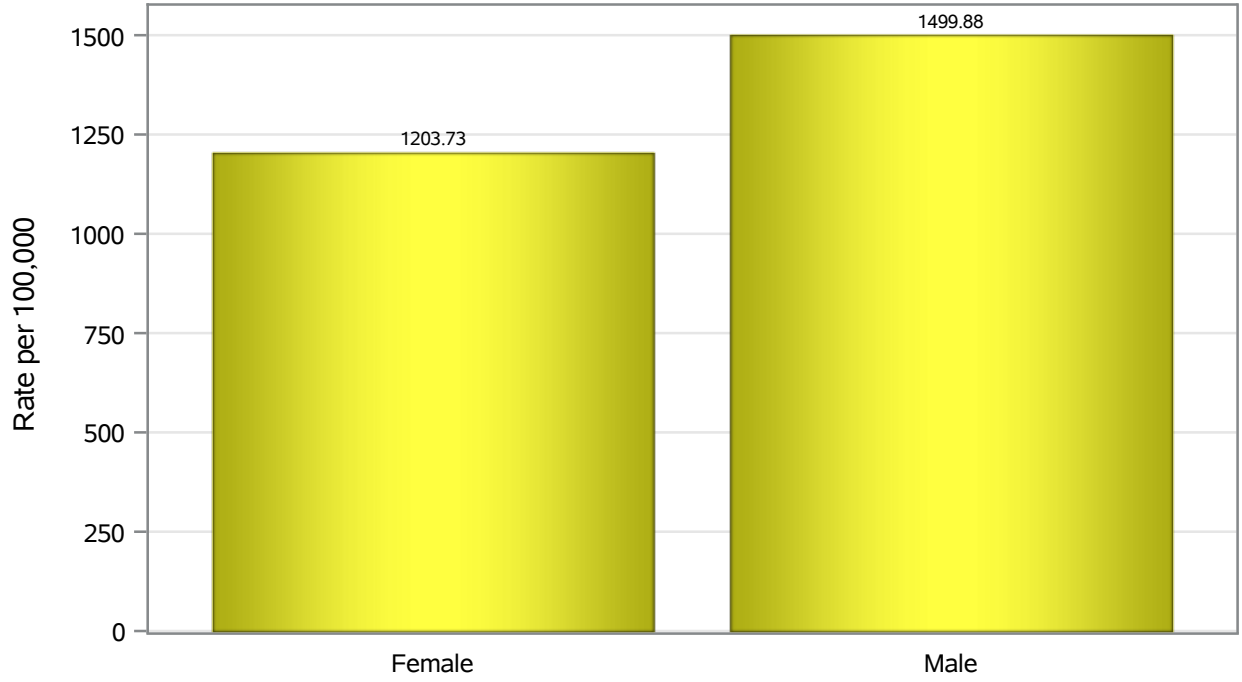


Investigations are ongoing; data are subject to change.

Reporting through 12DEC2022

Las Vegas zip codes include 89101, 89102, 89104, 89106, 89108, 89109, 89110, 89117, 89129, 89130, 89131, 89143, 89146, 89149, 89166, 89145, 89144, 89134, 89107, 89128, 89138.

### Hospitalization Birth Sex Rates in Las Vegas

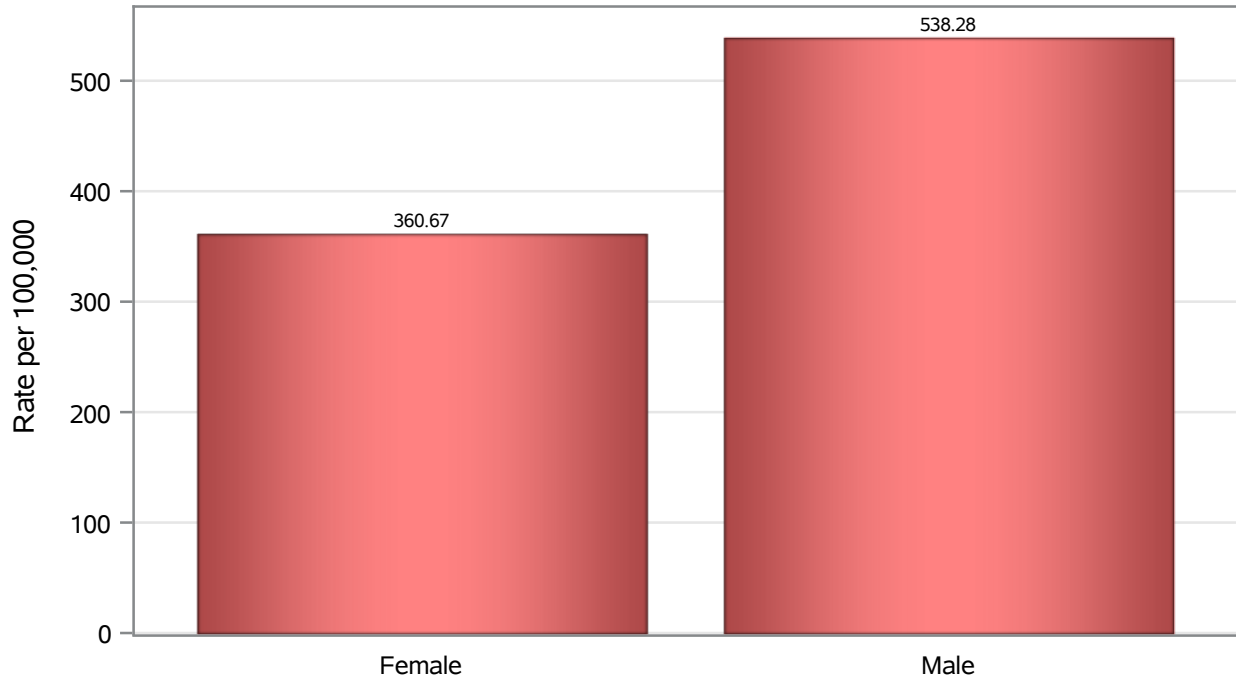


Investigations are ongoing; data are subject to change.

Reporting through 12DEC2022

Las Vegas zip codes include 89101, 89102, 89104, 89106, 89108, 89109, 89110, 89117, 89129, 89130, 89131, 89143, 89146, 89149, 89166, 89145, 89144, 89134, 89107, 89128, 89138.

### Death Birth Sex Rates in Las Vegas



Investigations are ongoing; data are subject to change.

Reporting through 12DEC2022

Las Vegas zip codes include 89101, 89102, 89104, 89106, 89108, 89109, 89110, 89117, 89129, 89130, 89131, 89143, 89146, 89149, 89166, 89145, 89144, 89134, 89107, 89128, 89138.

**Table 7: Birth Sex and COVID19 in Las Vegas**

Case Status	Birth Sex Categories	N	%	Population	Rate per 100,000
Cases	Female	95772	52.4	353235	27113
	Male	85649	46.8	353162	24252
	Unknown	1416	0.8	.	.
Hospitalizations	Female	4252	44.5	353235	1203.7
	Male	5297	55.4	353162	1499.9
	Unknown	8	0.1	.	.
Deaths	Female	1274	40.1	353235	360.67
	Male	1901	59.9	353162	538.28

Note1: Population data source for calculating rate estimates: U.S. Census Bureau, ACS 5-year estimate.

Note2: Rates for categories with fewer than 12 cases are suppressed due to high relative standard error.

Note3: Hospitalizations are regardless of deceased status; Deaths are regardless of hospitalization status

**Investigations are ongoing; data are subject to change.**

**Reporting through 12DEC2022**

**Las Vegas zip codes include 89101, 89102, 89104, 89106, 89108, 89109, 89110, 89117, 89129, 89130, 89131, 89143, 89146, 89149, 89166, 89145, 89144, 89134, 89107, 89128, 89138.**