

COVID-19 Trends

Clark County, Nevada

Document creation date: August 27, 2022

- General notes: This report uses surveillance data collected by the Southern Nevada Health District. Due to delays related to laboratory processing, reporting, and case investigations, data from the most recent days are less complete than data from older time points. For this reason, as of June 10, 2020 this report will not display data from the previous three days prior to the date that the report was created. As many case investigations are ongoing, all data presented in this report are considered preliminary and subject to change. Data regarding cases, hospitalizations, deaths, and labs were last updated August 27, 2022 at 12:00 AM, and data is reported up through August 23, 2022.
- Cases: Symptom onset date was used for aggregating cases. If symptom onset date was missing, the following dates were substituted in this order: diagnosis date, lab collection date, report date (date case was reported to SNHD), event creation date (date case was entered into TriSano, SNHD's surveillance system).
- Hospitalizations: Admission date reported the the Nevada Hospital Association was used for aggregating hospitalizations. One person could have more than one admissions.
- Deaths: Date of death was used for aggregating deaths. If date of death was missing, report date was used.
- For the "7-Day Average of Daily New Cases per 100K, by Age Group (Years)" graph and table, the population data source for calculating rate estimates was from Nevada State Demographer "2019 ASRHO Estimates and Projections Summary 2000 to 2038", 2020 projection, vintage 2019. Rates for individual age categories may be based on small numbers, which may give unstable estimates.
- All graphs in this report show data from approximately 60 days prior to the date of the report.
- All tables show data from the last 14 days before the current date, with the exception of the "Percent Change in Weekly Totals from Previous Week", which displays data from the previous eight completed weeks.
- For the "Percent of People Receiving COVID-19 PCR Tests Who Have Positive Results" graph, one person who has multiple specimens collected in one day is only reported once. If any test of that person is positive, that person counts as a positive result. If all tests of that individual are negative, that person counts as a negative result. Laboratory tests were included if they were a test assessing for the presence of SARS-CoV-2 viral RNA, for example PCR tests. Antibody and antigen tests were excluded.

COVID-19 Cases

Clark County, NV

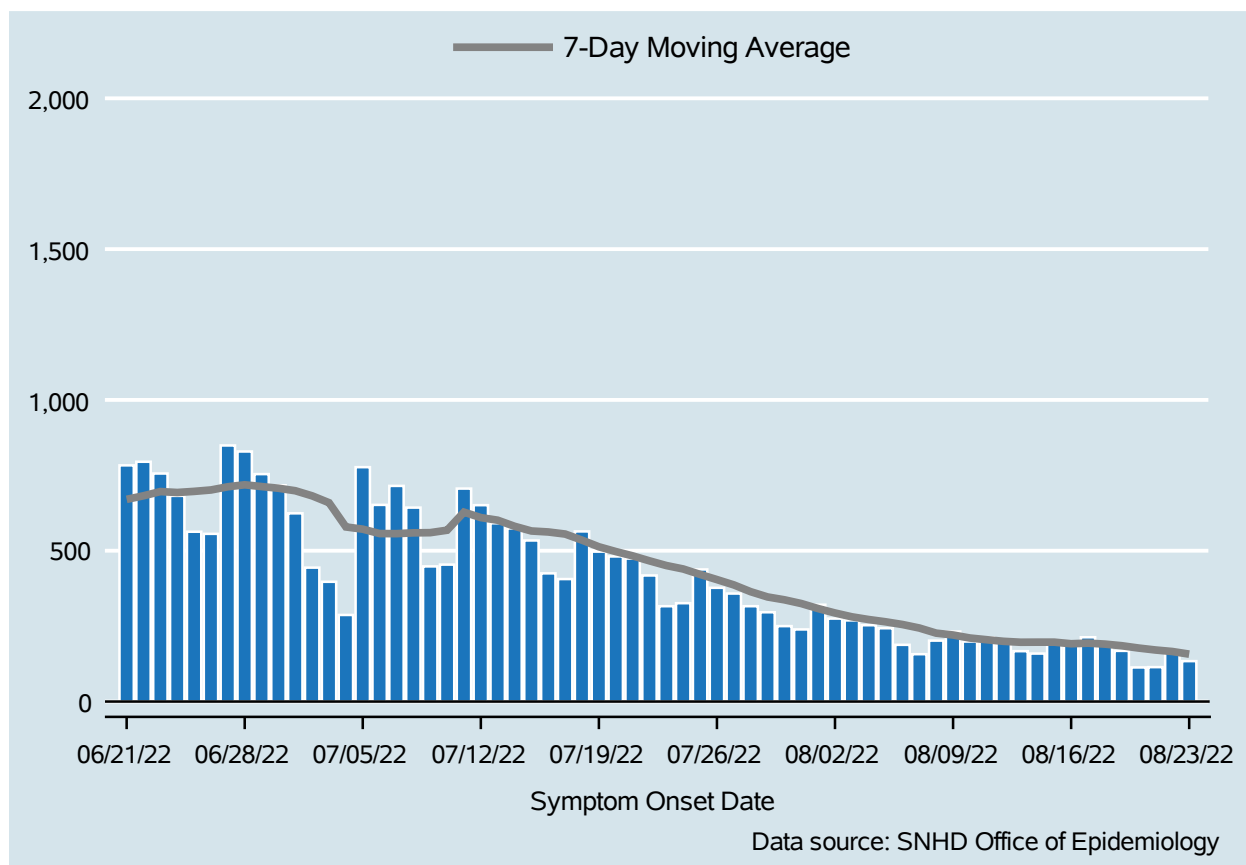


Table 1: COVID-19 Cases per Day, Clark County, NV

Date	Cases Per Day	7-Day Moving Average
Aug 10	199	210.6
Aug 11	213	204.9
Aug 12	206	199.6
Aug 13	167	196.6
Aug 14	159	196.9
Aug 15	202	196.9
Aug 16	195	191.6
Aug 17	213	193.6
Aug 18	191	190.4
Aug 19	168	185.0
Aug 20	113	177.3
Aug 21	114	170.9
Aug 22	167	165.9
Aug 23	134	157.1

COVID-19 Hospitalizations

Clark County, NV

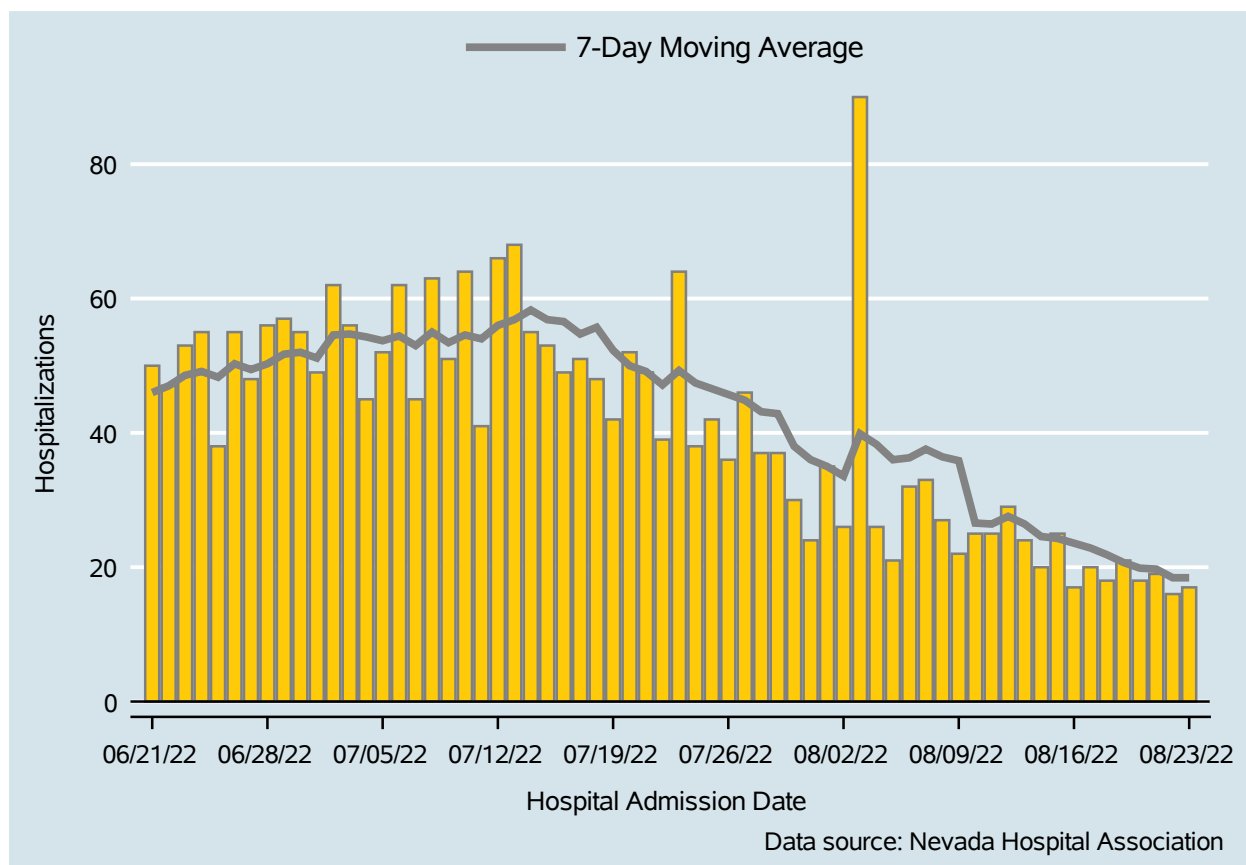


Table 2: COVID-19 Hospitalizations per Day, Clark County, NV

Date	Hospitalizations Per Day	7-Day Moving Average
Aug 10	25	26.6
Aug 11	25	26.4
Aug 12	29	27.6
Aug 13	24	26.4
Aug 14	20	24.6
Aug 15	25	24.3
Aug 16	17	23.6
Aug 17	20	22.9
Aug 18	18	21.9
Aug 19	21	20.7
Aug 20	18	19.9
Aug 21	19	19.7
Aug 22	16	18.4
Aug 23	17	18.4

Bed Occupancy of COVID-19 Hospitalizations

Clark County, NV

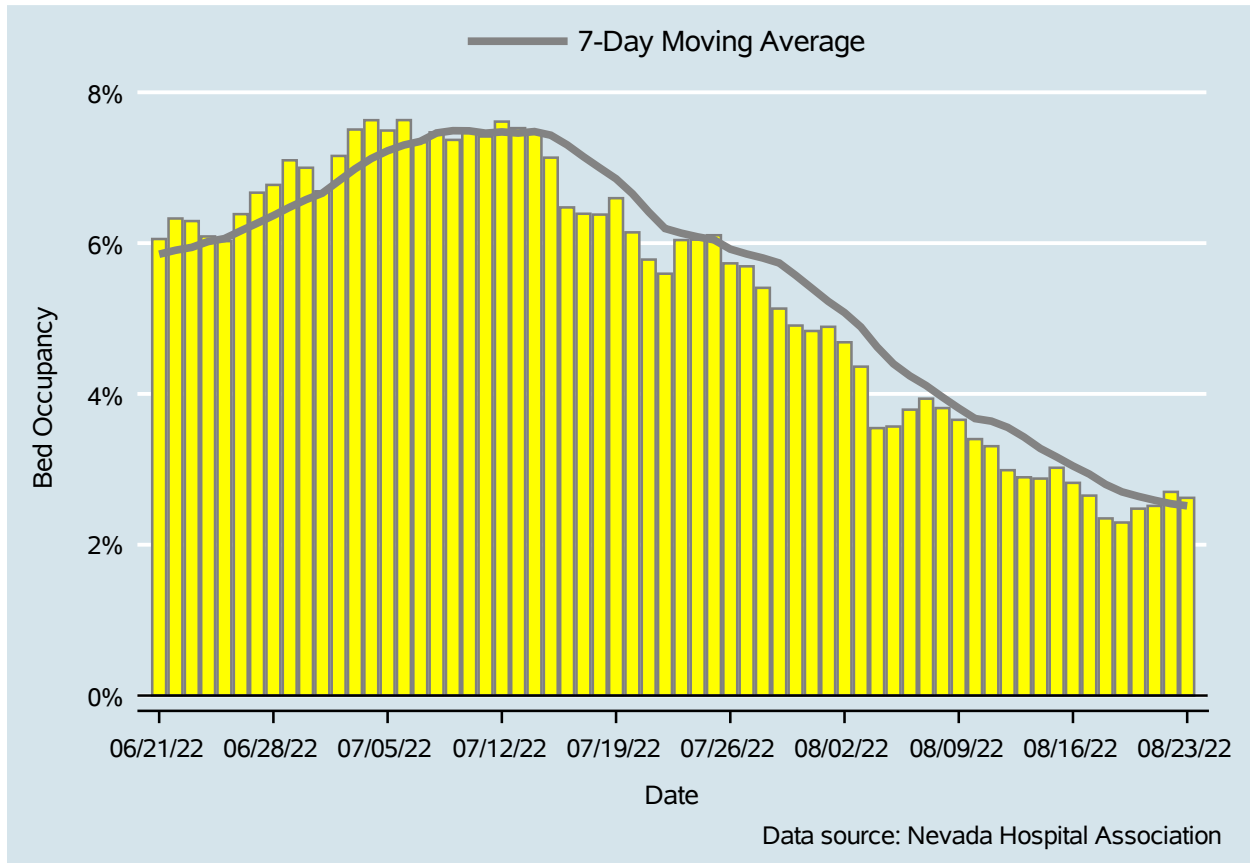


Table 3: Percent of Bed Occupancy per Day, Clark County, NV

Date	Bed Occupancy Per Day	7-Day Moving Average
Aug 10	3.40%	3.67%
Aug 11	3.31%	3.64%
Aug 12	2.99%	3.56%
Aug 13	2.89%	3.43%
Aug 14	2.88%	3.28%
Aug 15	3.02%	3.16%
Aug 16	2.82%	3.04%
Aug 17	2.65%	2.94%
Aug 18	2.35%	2.80%
Aug 19	2.29%	2.70%
Aug 20	2.48%	2.64%
Aug 21	2.52%	2.59%
Aug 22	2.70%	2.54%
Aug 23	2.62%	2.52%

COVID-19 Deaths

Clark County, NV

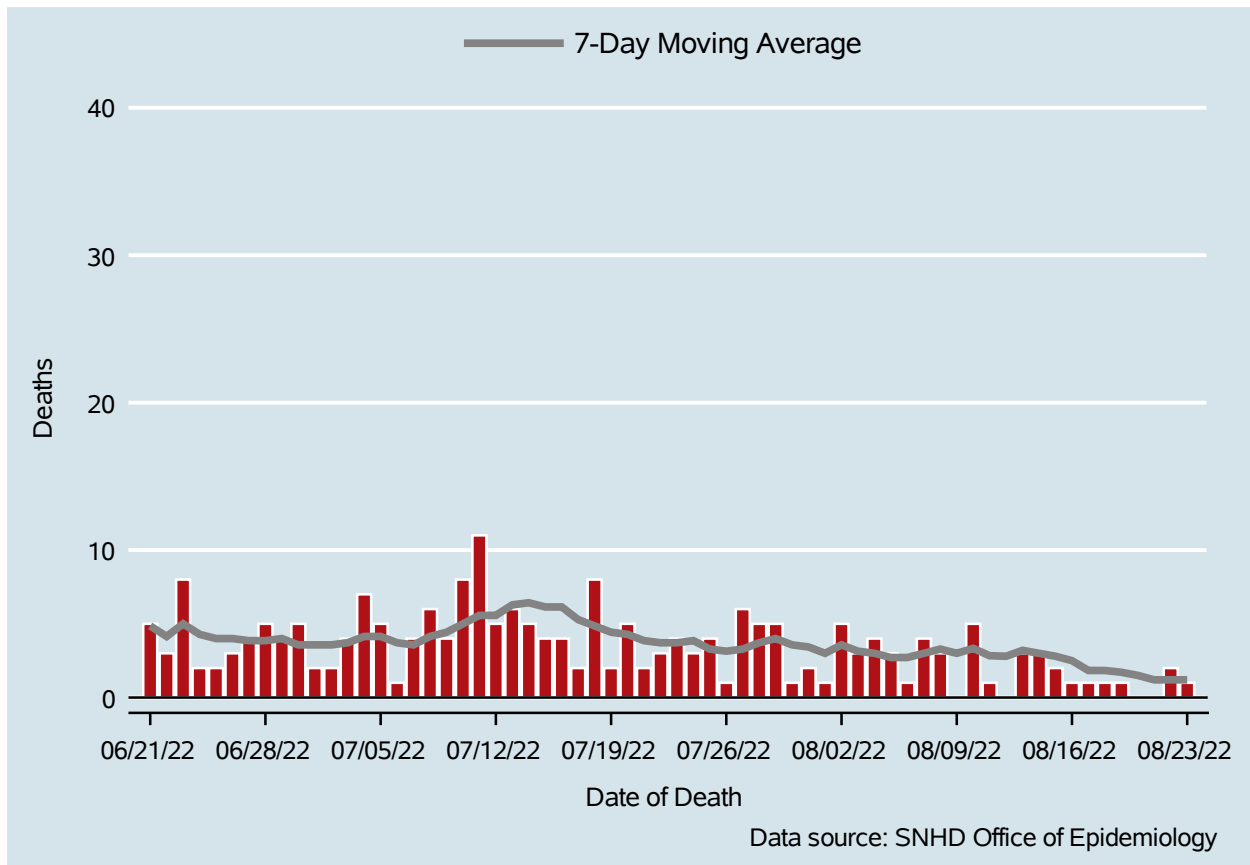


Table 4: COVID-19 Deaths per Day, Clark County, NV

Date	Deaths Per Day	7-Day Moving Average
Aug 10	5	3.3
Aug 11	1	2.8
Aug 12	.	2.8
Aug 13	3	3.2
Aug 14	3	3.0
Aug 15	2	2.8
Aug 16	1	2.5
Aug 17	1	1.8
Aug 18	1	1.8
Aug 19	1	1.7
Aug 20	.	1.5
Aug 21	.	1.2
Aug 22	2	1.2
Aug 23	1	1.2

7-Day Average of Daily New Cases per 100K, by Age Group (Years)

Clark County, NV

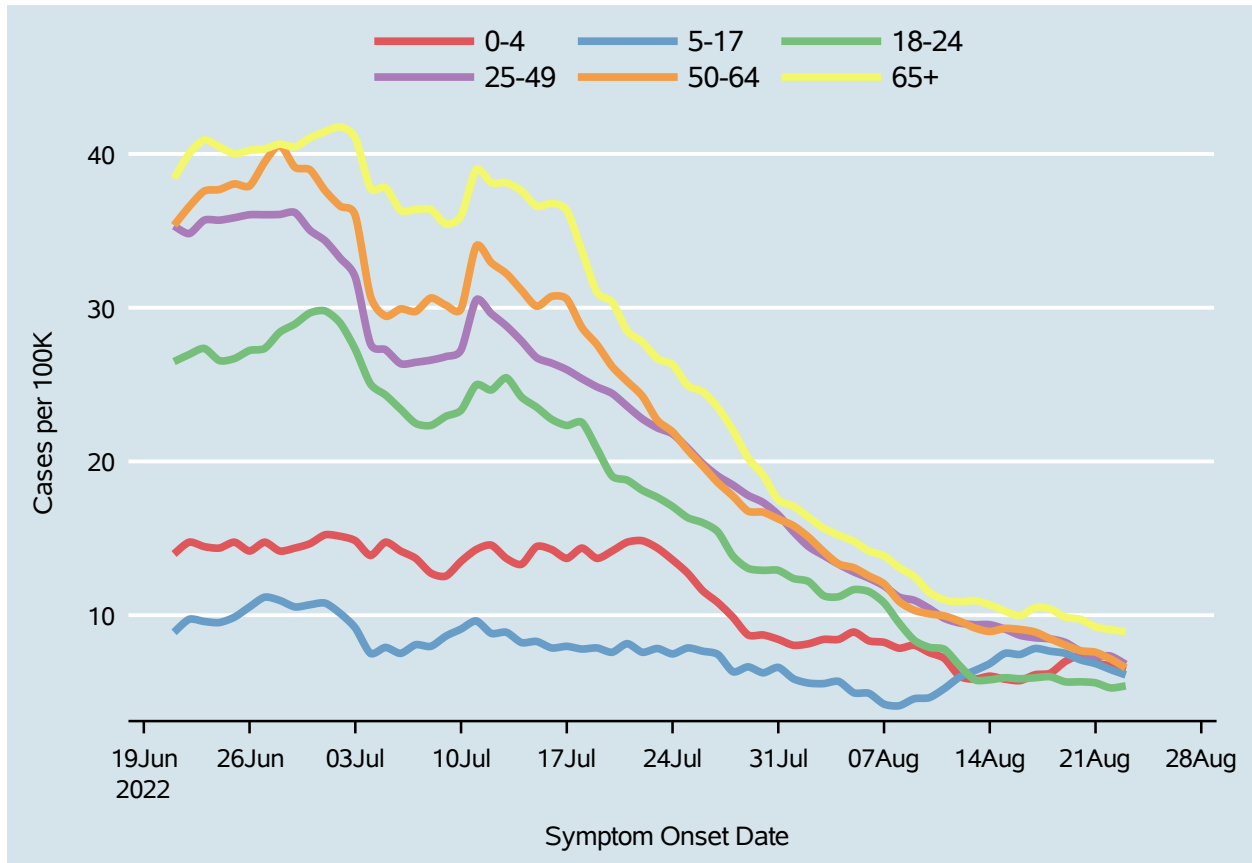
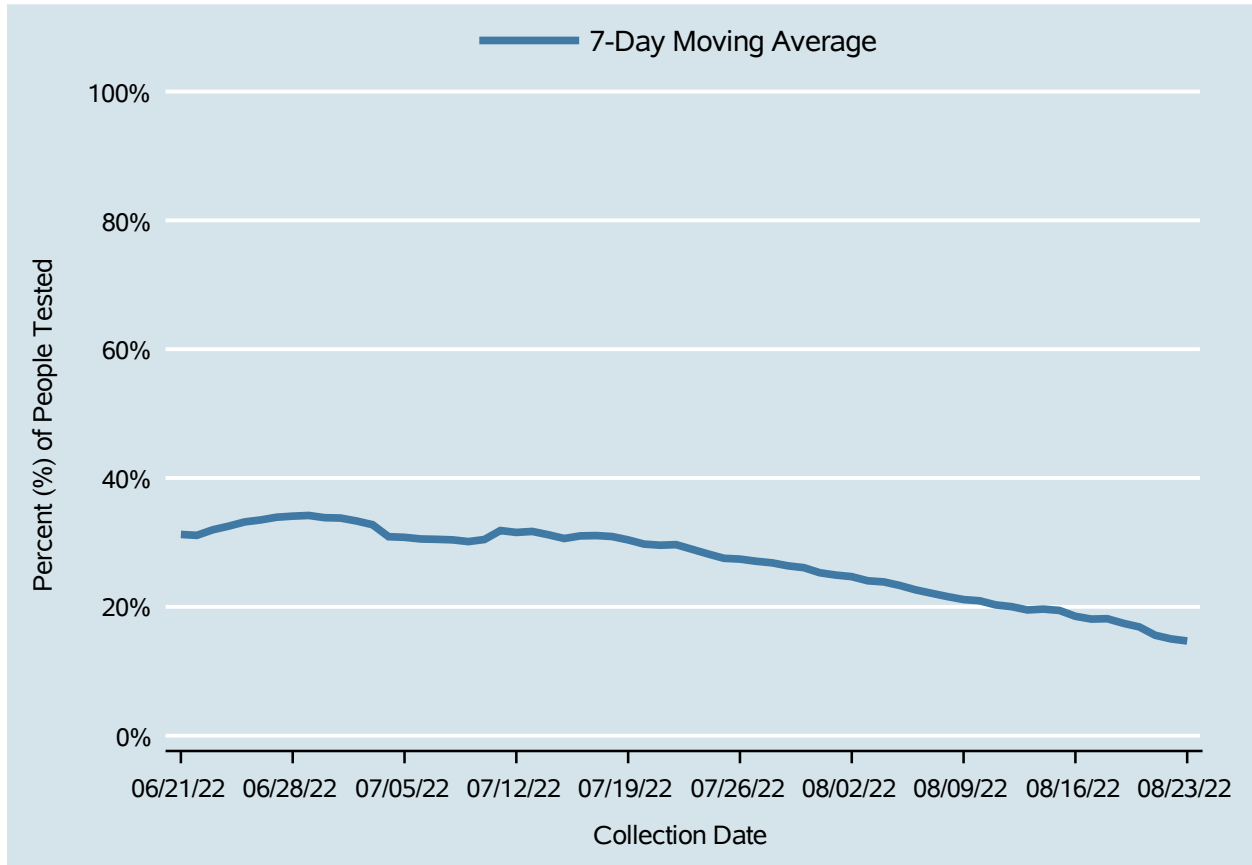


Table 5: 7-Day Average of Daily New Cases per 100K, by Age Group (Years)

Date	0-4	5-17	18-24	25-49	50-64	65+
Aug 10	7.6	4.6	7.9	10.4	10.1	11.5
Aug 11	7.2	5.2	7.8	9.8	10.0	11.0
Aug 12	6.0	6.0	6.7	9.5	9.6	10.9
Aug 13	5.8	6.4	5.8	9.4	9.2	10.9
Aug 14	6.0	6.9	5.8	9.4	8.9	10.7
Aug 15	5.8	7.5	5.9	9.1	9.1	10.3
Aug 16	5.7	7.4	5.9	8.7	9.1	10.0
Aug 17	6.1	7.8	5.9	8.5	8.9	10.5
Aug 18	6.2	7.7	6.0	8.5	8.5	10.4
Aug 19	7.0	7.5	5.7	8.2	8.1	9.9
Aug 20	7.4	7.1	5.7	7.7	7.7	9.7
Aug 21	6.9	6.9	5.6	7.3	7.6	9.2
Aug 22	6.7	6.5	5.3	7.3	7.2	9.1
Aug 23	6.4	6.1	5.4	6.8	6.6	8.9

Percent of People Receiving COVID-19 PCR Tests Who Have Positive Results

Clark County, NV



Report prepared by: Ying Zhang, PhD, MPH (Office of Epidemiology) and Lei Zhang, MS (Office of Informatics)