

COVID-19 Trends

Clark County, Nevada

Document creation date: August 16, 2022

- General notes: This report uses surveillance data collected by the Southern Nevada Health District. Due to delays related to laboratory processing, reporting, and case investigations, data from the most recent days are less complete than data from older time points. For this reason, as of June 10, 2020 this report will not display data from the previous three days prior to the date that the report was created. As many case investigations are ongoing, all data presented in this report are considered preliminary and subject to change. Data regarding cases, hospitalizations, deaths, and labs were last updated August 16, 2022 at 12:00 AM, and data is reported up through August 12, 2022.
- Cases: Symptom onset date was used for aggregating cases. If symptom onset date was missing, the following dates were substituted in this order: diagnosis date, lab collection date, report date (date case was reported to SNHD), event creation date (date case was entered into TriSano, SNHD's surveillance system).
- Hospitalizations: Admission date reported the the Nevada Hospital Association was used for aggregating hospitalizations. One person could have more than one admissions.
- Deaths: Date of death was used for aggregating deaths. If date of death was missing, report date was used.
- For the "7-Day Average of Daily New Cases per 100K, by Age Group (Years)" graph and table, the population data source for calculating rate estimates was from Nevada State Demographer "2019 ASRHO Estimates and Projections Summary 2000 to 2038", 2020 projection, vintage 2019. Rates for individual age categories may be based on small numbers, which may give unstable estimates.
- All graphs in this report show data from approximately 60 days prior to the date of the report.
- All tables show data from the last 14 days before the current date, with the exception of the "Percent Change in Weekly Totals from Previous Week", which displays data from the previous eight completed weeks.
- For the "Percent of People Receiving COVID-19 PCR Tests Who Have Positive Results" graph, one person who has multiple specimens collected in one day is only reported once. If any test of that person is positive, that person counts as a positive result. If all tests of that individual are negative, that person counts as a negative result. Laboratory tests were included if they were a test assessing for the presence of SARS-CoV-2 viral RNA, for example PCR tests. Antibody and antigen tests were excluded.

COVID-19 Cases

Clark County, NV

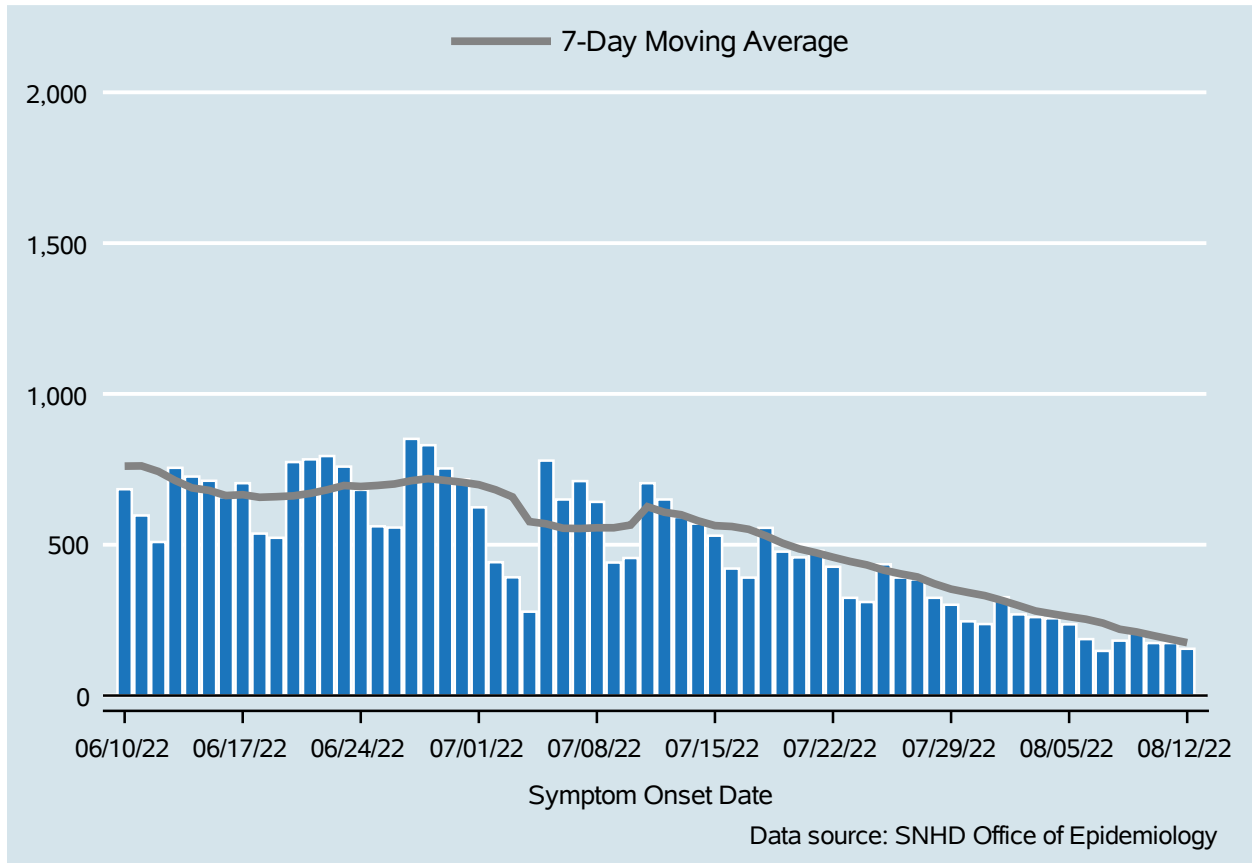


Table 1: COVID-19 Cases per Day, Clark County, NV

Date	Cases Per Day	7-Day Moving Average
Jul 30	246	341.7
Jul 31	237	331.3
Aug 01	326	315.7
Aug 02	269	298.3
Aug 03	260	280.4
Aug 04	256	270.7
Aug 05	236	261.4
Aug 06	187	253.0
Aug 07	148	240.3
Aug 08	182	219.7
Aug 09	207	210.9
Aug 10	174	198.6
Aug 11	174	186.9
Aug 12	155	175.3

COVID-19 Hospitalizations

Clark County, NV

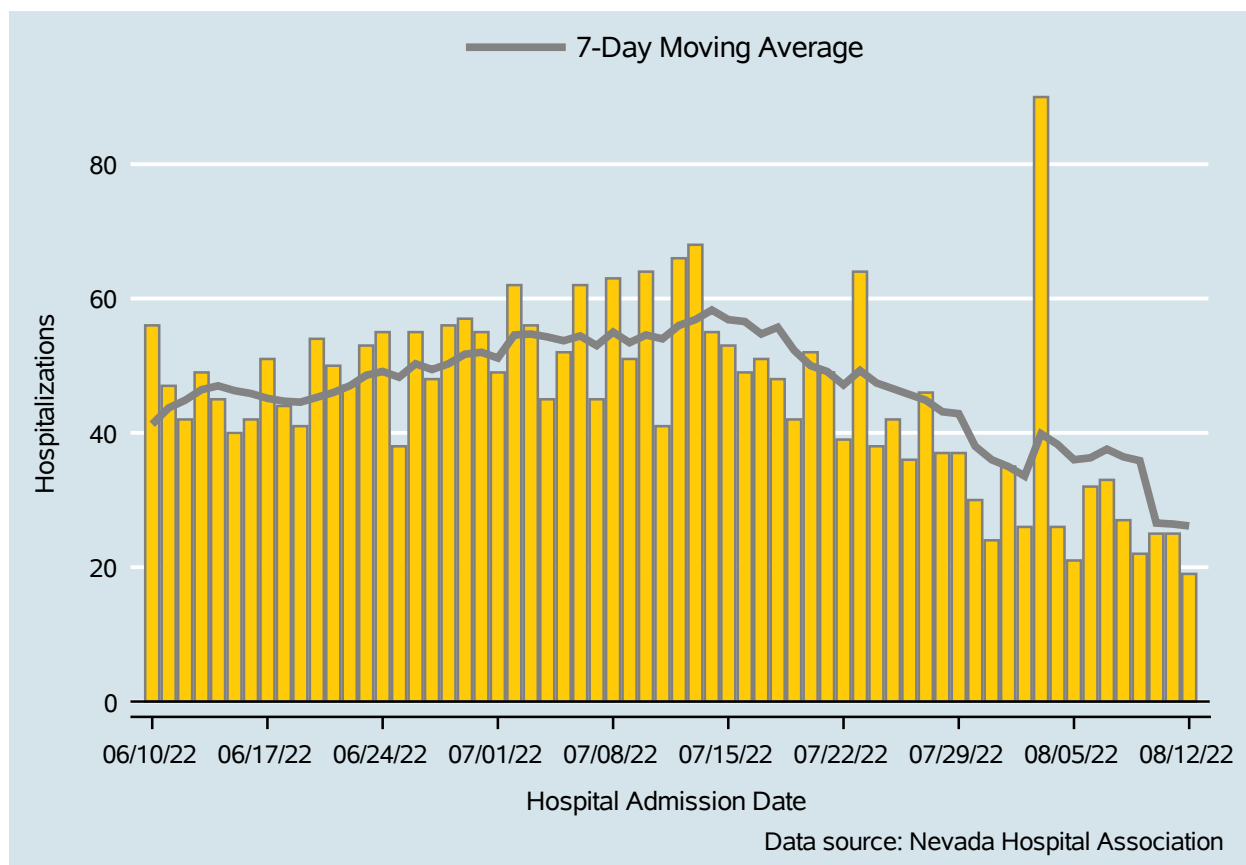


Table 2: COVID-19 Hospitalizations per Day, Clark County, NV

Date	Hospitalizations Per Day	7-Day Moving Average
Jul 30	30	38.0
Jul 31	24	36.0
Aug 01	35	35.0
Aug 02	26	33.6
Aug 03	90	39.9
Aug 04	26	38.3
Aug 05	21	36.0
Aug 06	32	36.3
Aug 07	33	37.6
Aug 08	27	36.4
Aug 09	22	35.9
Aug 10	25	26.6
Aug 11	25	26.4
Aug 12	19	26.1

Bed Occupancy of COVID-19 Hospitalizations

Clark County, NV

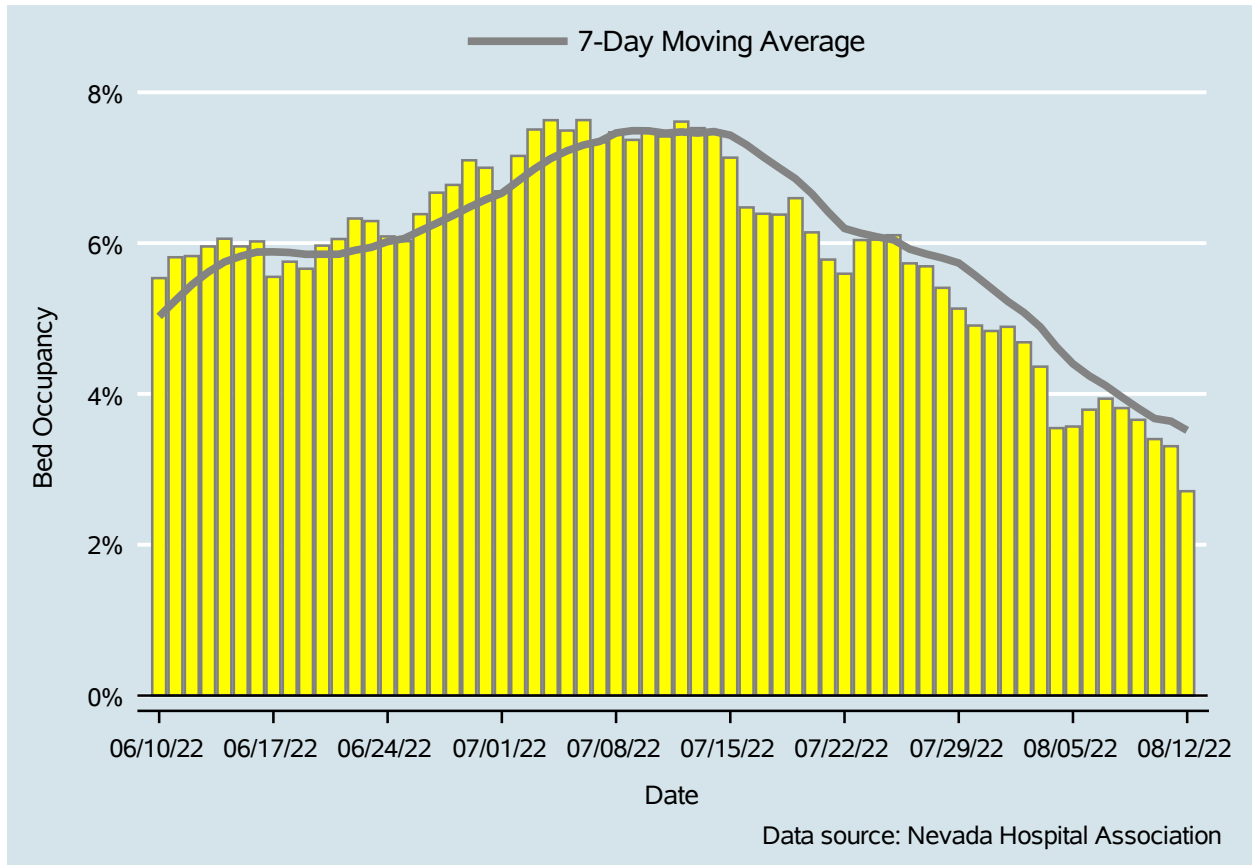


Table 3: Percent of Bed Occupancy per Day, Clark County, NV

Date	Bed Occupancy Per Day	7-Day Moving Average
Jul 30	4.91%	5.57%
Jul 31	4.83%	5.40%
Aug 01	4.89%	5.23%
Aug 02	4.68%	5.08%
Aug 03	4.36%	4.89%
Aug 04	3.55%	4.62%
Aug 05	3.57%	4.40%
Aug 06	3.79%	4.24%
Aug 07	3.94%	4.11%
Aug 08	3.81%	3.96%
Aug 09	3.66%	3.81%
Aug 10	3.40%	3.67%
Aug 11	3.31%	3.64%
Aug 12	2.71%	3.52%

COVID-19 Deaths

Clark County, NV

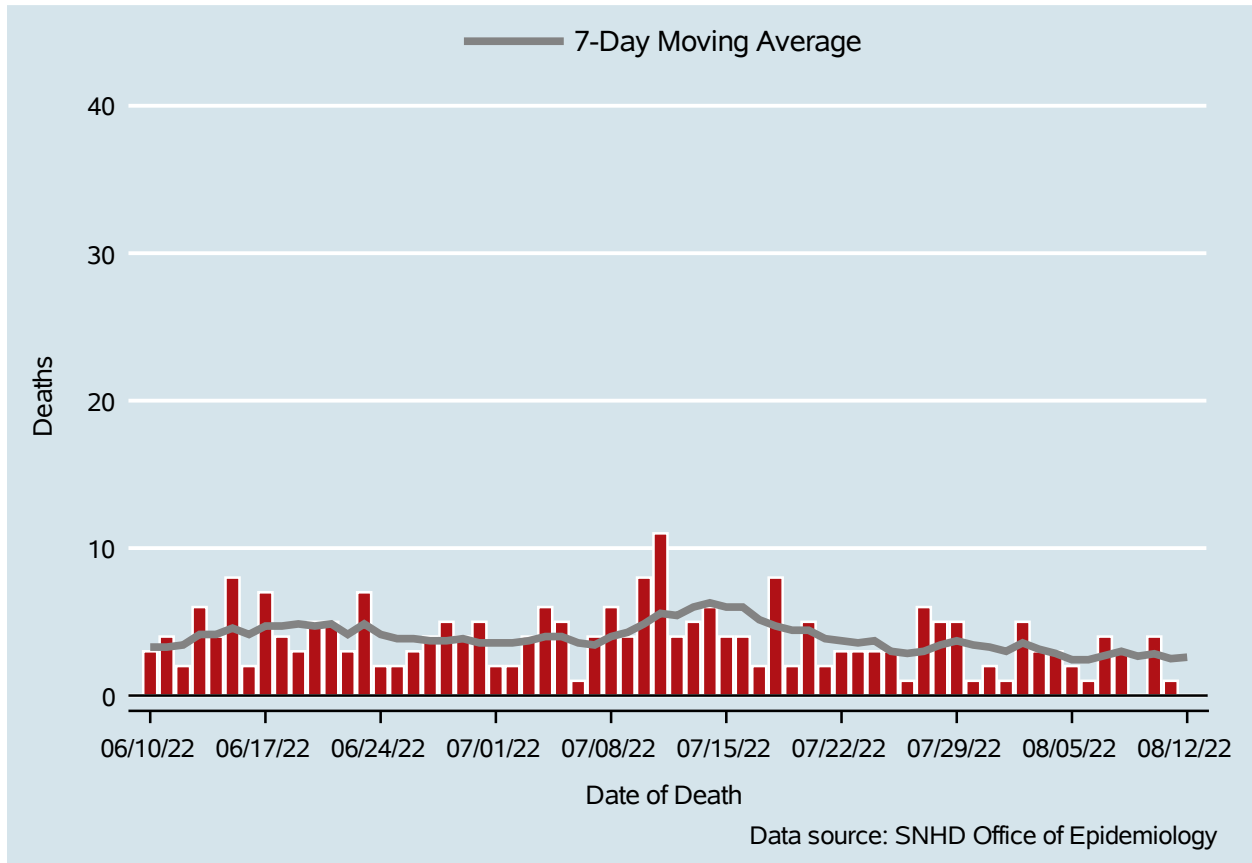


Table 4: COVID-19 Deaths per Day, Clark County, NV

Date	Deaths Per Day	7-Day Moving Average
Jul 30	1	3.4
Jul 31	2	3.3
Aug 01	1	3.0
Aug 02	5	3.6
Aug 03	3	3.1
Aug 04	3	2.9
Aug 05	2	2.4
Aug 06	1	2.4
Aug 07	4	2.7
Aug 08	3	3.0
Aug 09	.	2.7
Aug 10	4	2.8
Aug 11	1	2.5
Aug 12	.	2.6

7-Day Average of Daily New Cases per 100K, by Age Group (Years)

Clark County, NV

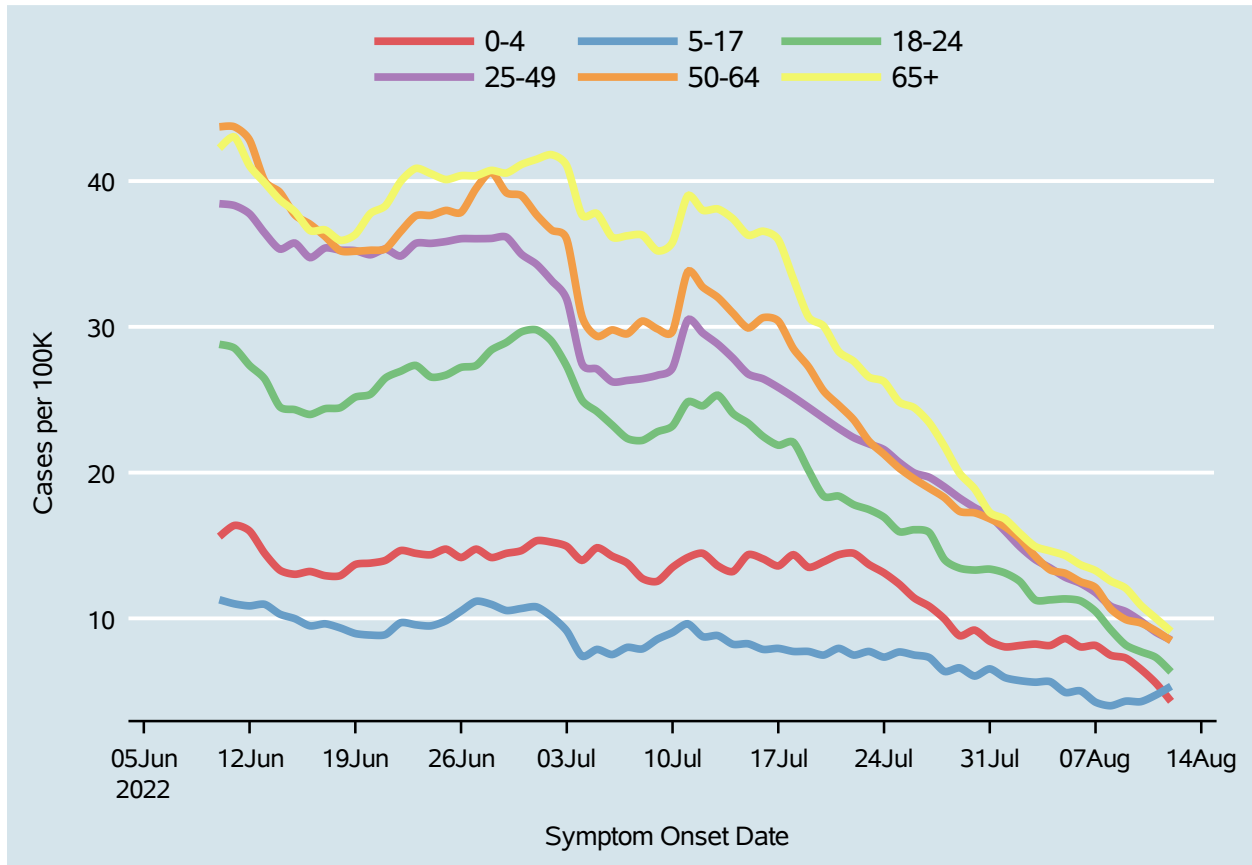
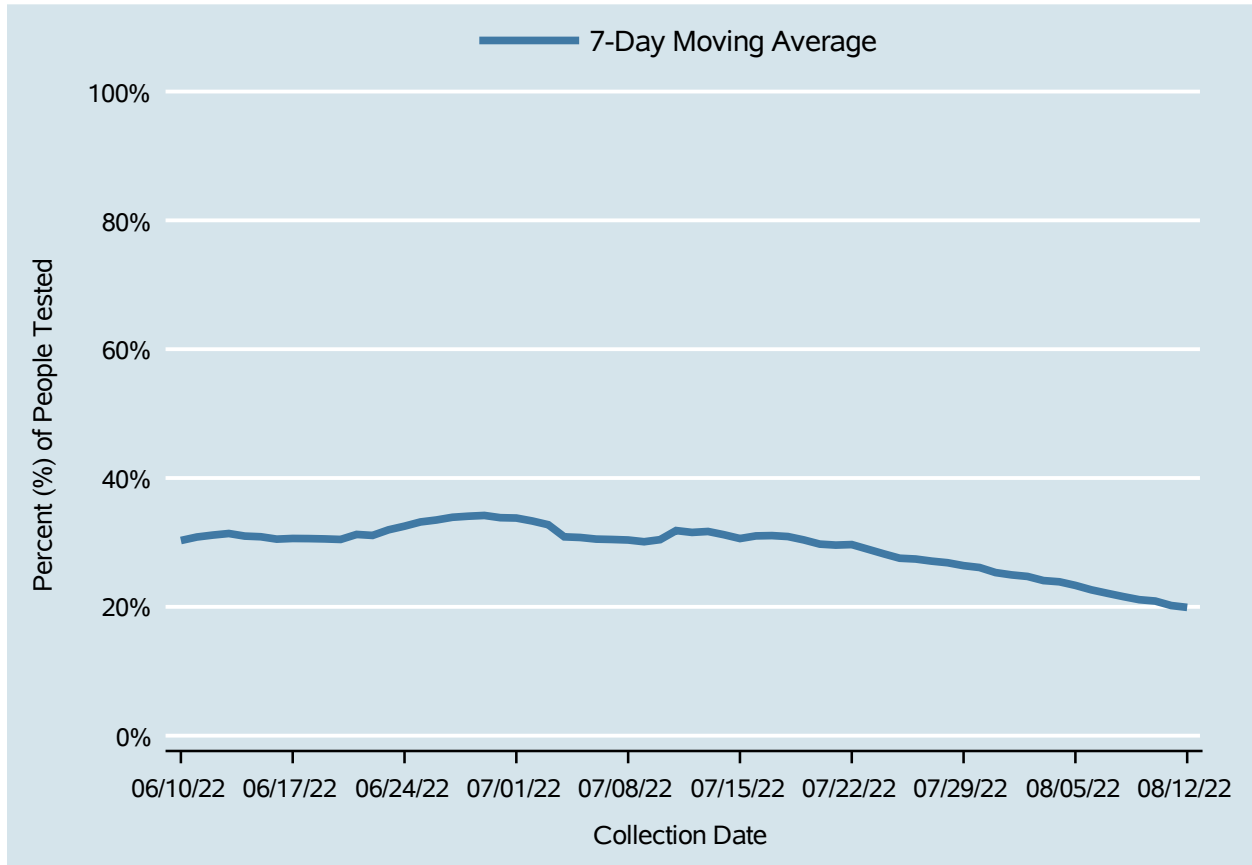


Table 5: 7-Day Average of Daily New Cases per 100K, by Age Group (Years)

Date	0-4	5-17	18-24	25-49	50-64	65+
Jul 30	9.2	6.0	13.3	17.6	17.2	18.9
Jul 31	8.4	6.5	13.4	17.0	16.8	17.3
Aug 01	8.0	5.9	13.1	16.0	16.3	16.8
Aug 02	8.1	5.7	12.5	14.9	15.5	15.8
Aug 03	8.2	5.6	11.3	14.0	14.3	14.9
Aug 04	8.1	5.7	11.3	13.5	13.3	14.6
Aug 05	8.6	4.9	11.3	12.8	13.1	14.3
Aug 06	8.0	5.0	11.2	12.4	12.5	13.7
Aug 07	8.1	4.3	10.5	11.8	12.1	13.3
Aug 08	7.5	4.0	9.2	10.8	10.7	12.6
Aug 09	7.3	4.3	8.2	10.5	9.9	12.1
Aug 10	6.5	4.3	7.7	9.8	9.7	10.9
Aug 11	5.6	4.7	7.3	9.0	9.1	10.0
Aug 12	4.3	5.3	6.3	8.5	8.5	9.1

Percent of People Receiving COVID-19 PCR Tests Who Have Positive Results

Clark County, NV



Report prepared by: Ying Zhang, PhD, MPH (Office of Epidemiology) and Lei Zhang, MS (Office of Informatics)