

# COVID-19 Trends

Clark County, Nevada

Document creation date: August 3, 2022

- General notes: This report uses surveillance data collected by the Southern Nevada Health District. Due to delays related to laboratory processing, reporting, and case investigations, data from the most recent days are less complete than data from older time points. For this reason, as of June 10, 2020 this report will not display data from the previous three days prior to the date that the report was created. As many case investigations are ongoing, all data presented in this report are considered preliminary and subject to change. Data regarding cases, hospitalizations, deaths, and labs were last updated August 3, 2022 at 12:00 AM, and data is reported up through July 30, 2022.
- Cases: Symptom onset date was used for aggregating cases. If symptom onset date was missing, the following dates were substituted in this order: diagnosis date, lab collection date, report date (date case was reported to SNHD), event creation date (date case was entered into TriSano, SNHD's surveillance system).
- Hospitalizations: Admission date reported the the Nevada Hospital Association was used for aggregating hospitalizations. One person could have more than one admissions.
- Deaths: Date of death was used for aggregating deaths. If date of death was missing, report date was used.
- For the "7-Day Average of Daily New Cases per 100K, by Age Group (Years)" graph and table, the population data source for calculating rate estimates was from Nevada State Demographer "2019 ASRHO Estimates and Projections Summary 2000 to 2038", 2020 projection, vintage 2019. Rates for individual age categories may be based on small numbers, which may give unstable estimates.
- All graphs in this report show data from approximately 60 days prior to the date of the report.
- All tables show data from the last 14 days before the current date, with the exception of the "Percent Change in Weekly Totals from Previous Week", which displays data from the previous eight completed weeks.
- For the "Percent of People Receiving COVID-19 PCR Tests Who Have Positive Results" graph, one person who has multiple specimens collected in one day is only reported once. If any test of that person is positive, that person counts as a positive result. If all tests of that individual are negative, that person counts as a negative result. Laboratory tests were included if they were a test assessing for the presence of SARS-CoV-2 viral RNA, for example PCR tests. Antibody and antigen tests were excluded.

# COVID-19 Cases

Clark County, NV

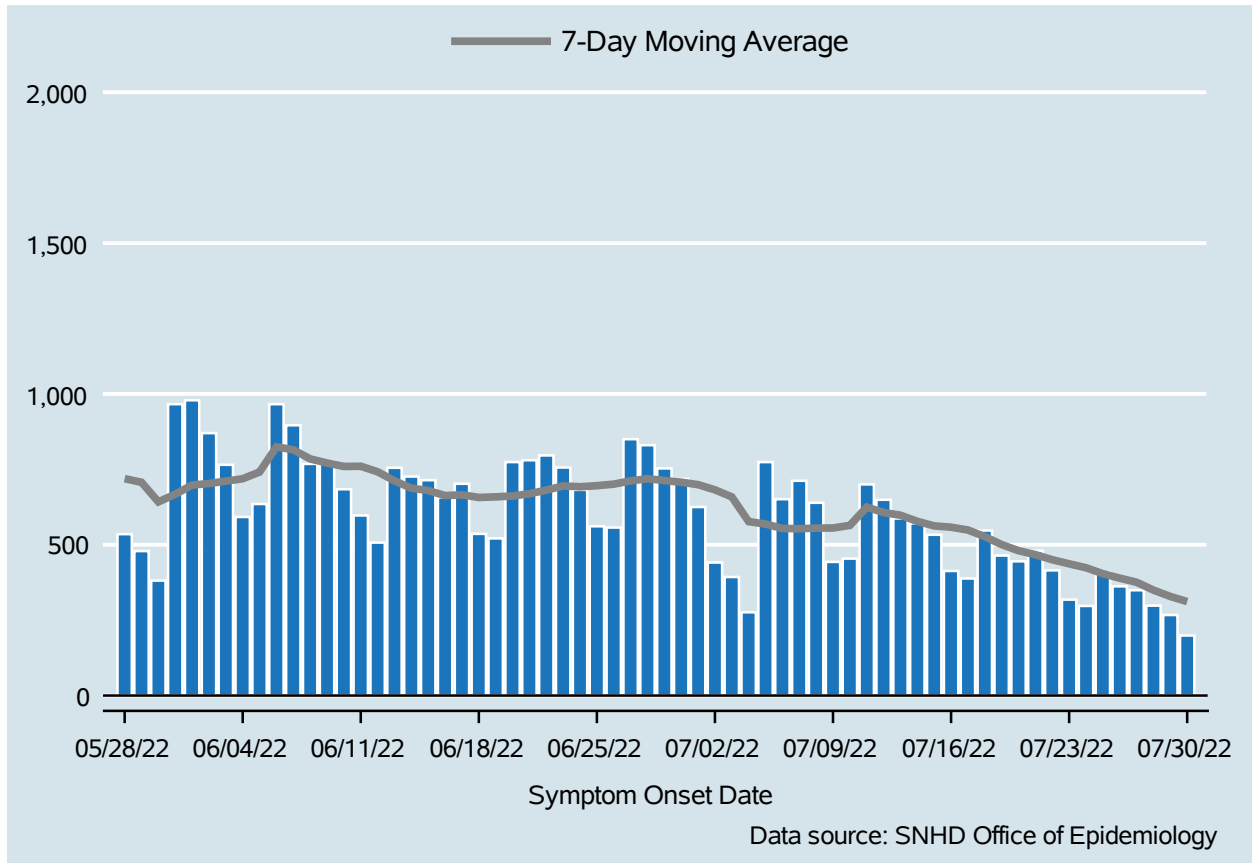


Table 1: COVID-19 Cases per Day, Clark County, NV

Date	Cases Per Day	7-Day Moving Average
Jul 17	388	548.7
Jul 18	547	526.9
Jul 19	464	500.4
Jul 20	445	480.1
Jul 21	480	467.1
Jul 22	415	450.3
Jul 23	318	436.7
Jul 24	297	423.7
Jul 25	408	403.9
Jul 26	362	389.3
Jul 27	349	375.6
Jul 28	298	349.6
Jul 29	267	328.4
Jul 30	199	311.4

# COVID-19 Hospitalizations

Clark County, NV

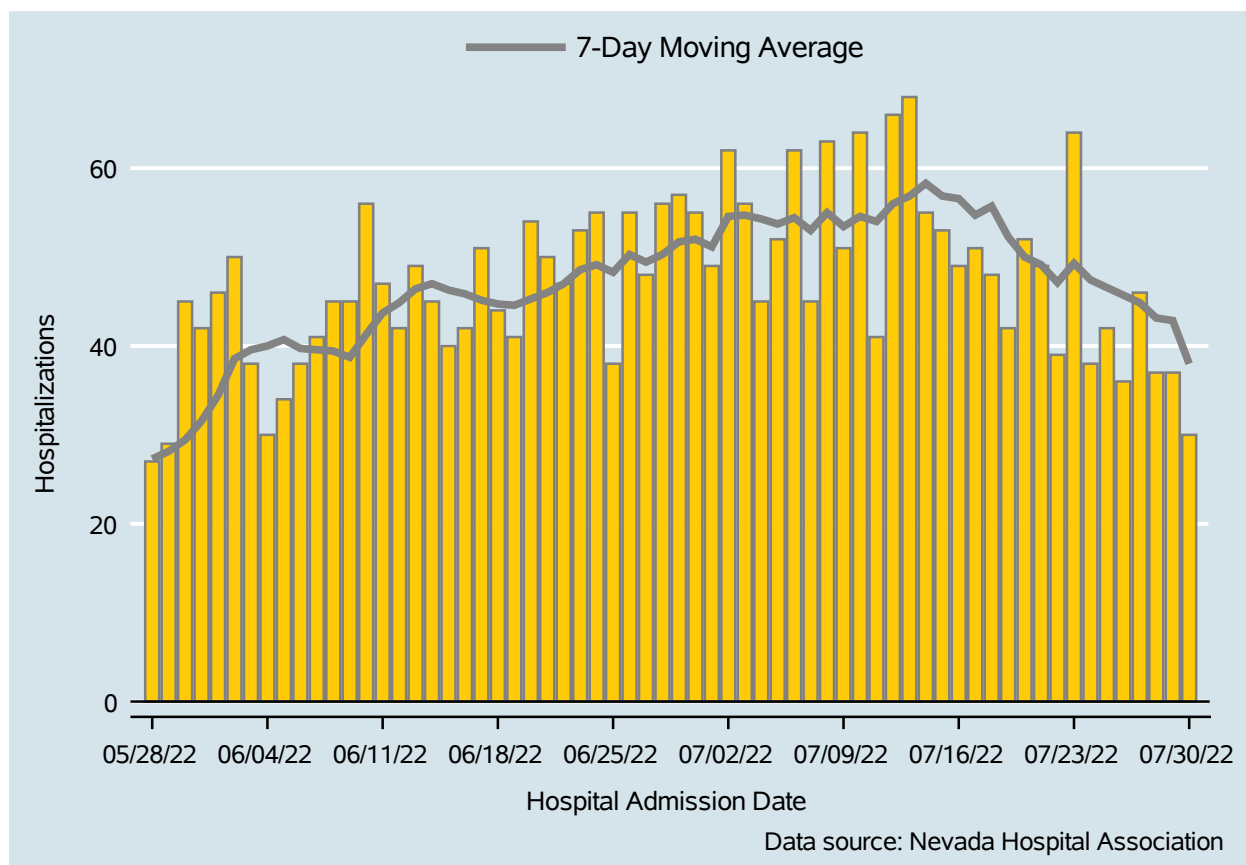


Table 2: COVID-19 Hospitalizations per Day, Clark County, NV

Date	Hospitalizations Per Day	7-Day Moving Average
Jul 17	51	54.7
Jul 18	48	55.7
Jul 19	42	52.3
Jul 20	52	50.0
Jul 21	49	49.1
Jul 22	39	47.1
Jul 23	64	49.3
Jul 24	38	47.4
Jul 25	42	46.6
Jul 26	36	45.7
Jul 27	46	44.9
Jul 28	37	43.1
Jul 29	37	42.9
Jul 30	30	38.0

# Bed Occupancy of COVID-19 Hospitalizations

Clark County, NV

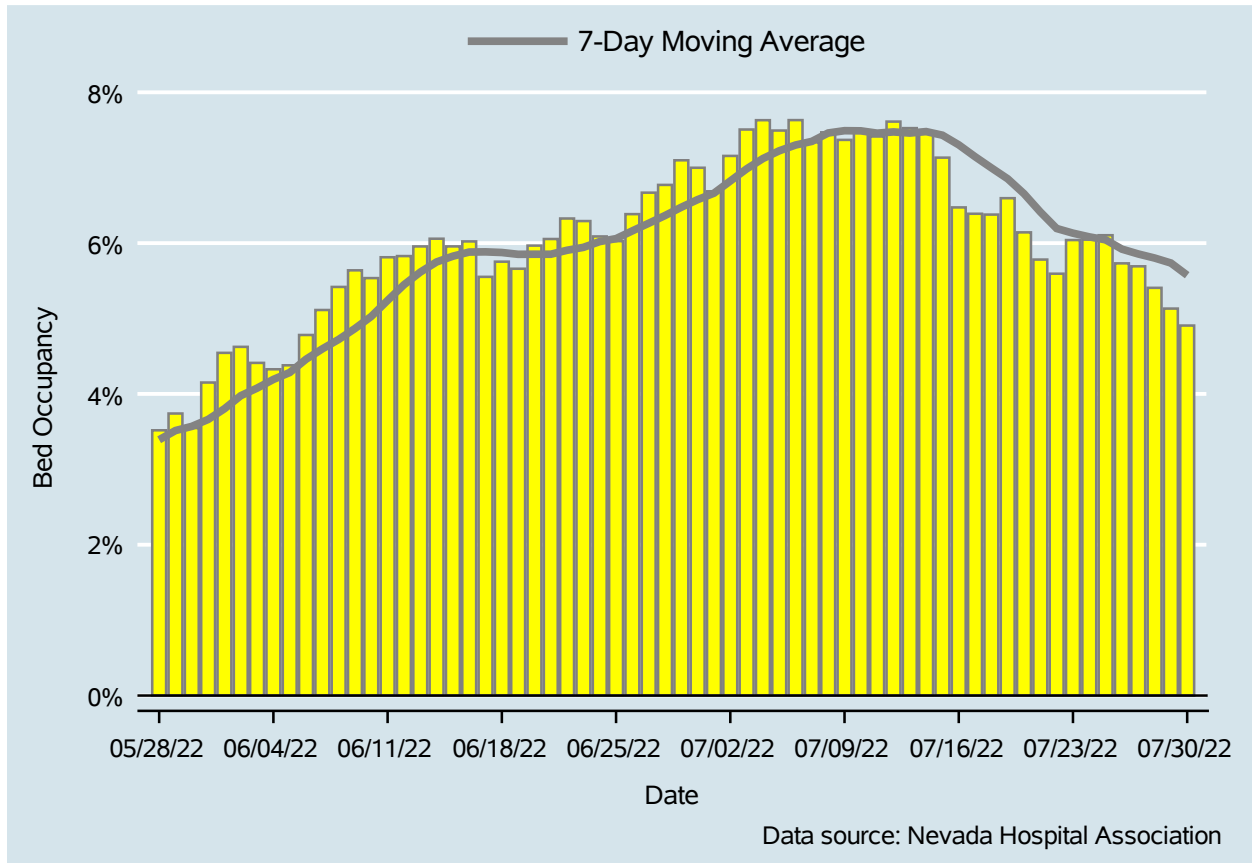


Table 3: Percent of Bed Occupancy per Day, Clark County, NV

Date	Bed Occupancy Per Day	7-Day Moving Average
Jul 17	6.39%	7.15%
Jul 18	6.38%	7.00%
Jul 19	6.60%	6.85%
Jul 20	6.14%	6.66%
Jul 21	5.78%	6.41%
Jul 22	5.59%	6.19%
Jul 23	6.04%	6.13%
Jul 24	6.05%	6.08%
Jul 25	6.10%	6.04%
Jul 26	5.73%	5.92%
Jul 27	5.69%	5.86%
Jul 28	5.41%	5.80%
Jul 29	5.13%	5.74%
Jul 30	4.91%	5.57%

# COVID-19 Deaths

Clark County, NV

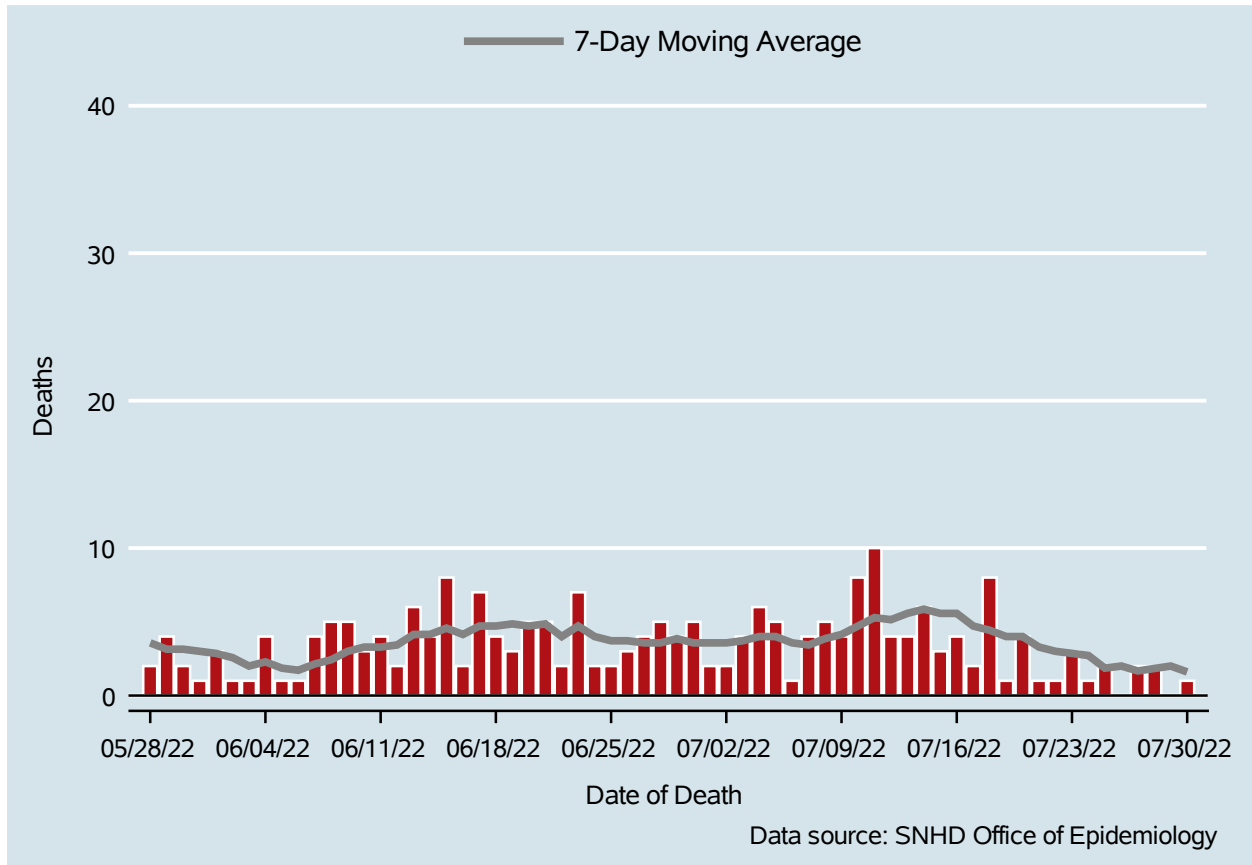


Table 4: COVID-19 Deaths per Day, Clark County, NV

Date	Deaths Per Day	7-Day Moving Average
Jul 17	2	4.7
Jul 18	8	4.4
Jul 19	1	4.0
Jul 20	4	4.0
Jul 21	1	3.3
Jul 22	1	3.0
Jul 23	3	2.9
Jul 24	1	2.7
Jul 25	2	1.9
Jul 26	.	2.0
Jul 27	2	1.7
Jul 28	2	1.8
Jul 29	.	2.0
Jul 30	1	1.6

## 7-Day Average of Daily New Cases per 100K, by Age Group (Years)

Clark County, NV

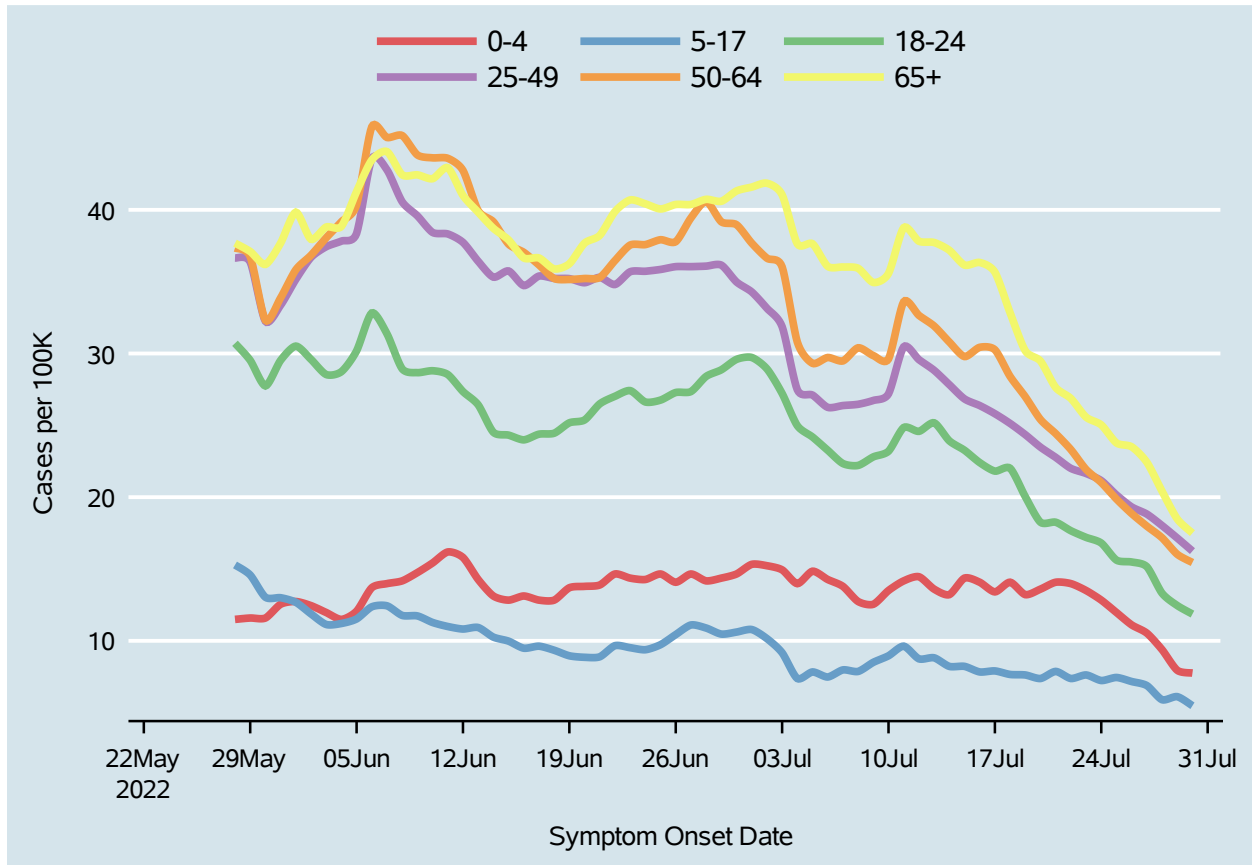
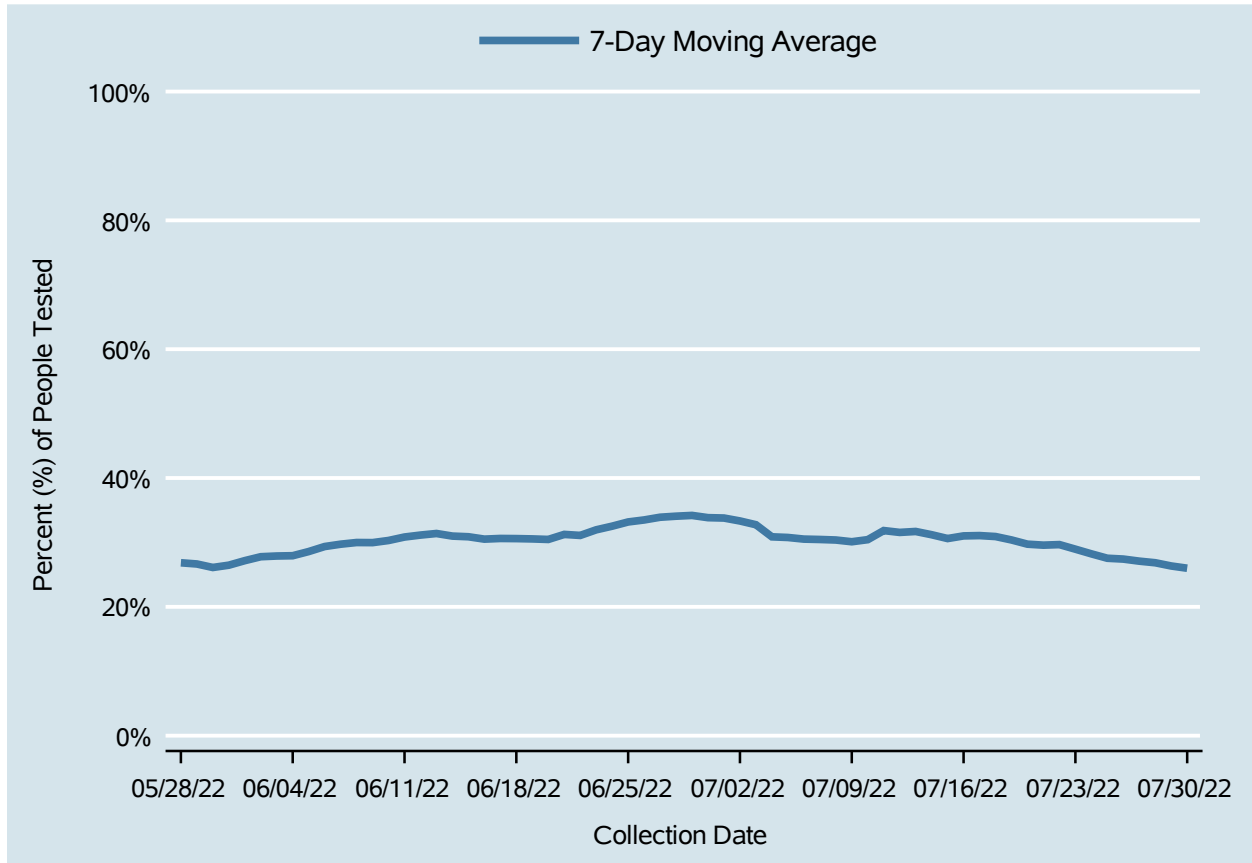


Table 5: 7-Day Average of Daily New Cases per 100K, by Age Group (Years)

Date	0-4	5-17	18-24	25-49	50-64	65+
Jul 17	13.4	7.9	21.8	25.8	30.3	35.7
Jul 18	14.1	7.7	22.0	25.1	28.4	32.8
Jul 19	13.2	7.6	20.0	24.4	27.0	30.2
Jul 20	13.6	7.4	18.3	23.5	25.4	29.5
Jul 21	14.1	7.9	18.3	22.8	24.4	27.6
Jul 22	14.0	7.4	17.7	22.0	23.3	26.9
Jul 23	13.5	7.6	17.2	21.6	21.9	25.6
Jul 24	12.8	7.2	16.8	21.2	21.0	25.0
Jul 25	12.0	7.4	15.6	20.2	19.9	23.8
Jul 26	11.1	7.2	15.5	19.3	18.9	23.5
Jul 27	10.5	6.9	15.2	18.8	18.0	22.4
Jul 28	9.4	5.9	13.3	18.0	17.2	20.4
Jul 29	7.9	6.1	12.5	17.2	16.0	18.5
Jul 30	7.8	5.5	11.9	16.2	15.5	17.5

## Percent of People Receiving COVID-19 PCR Tests Who Have Positive Results

Clark County, NV



*Report prepared by: Ying Zhang, PhD, MPH (Office of Epidemiology) and Lei Zhang, MS (Office of Informatics)*