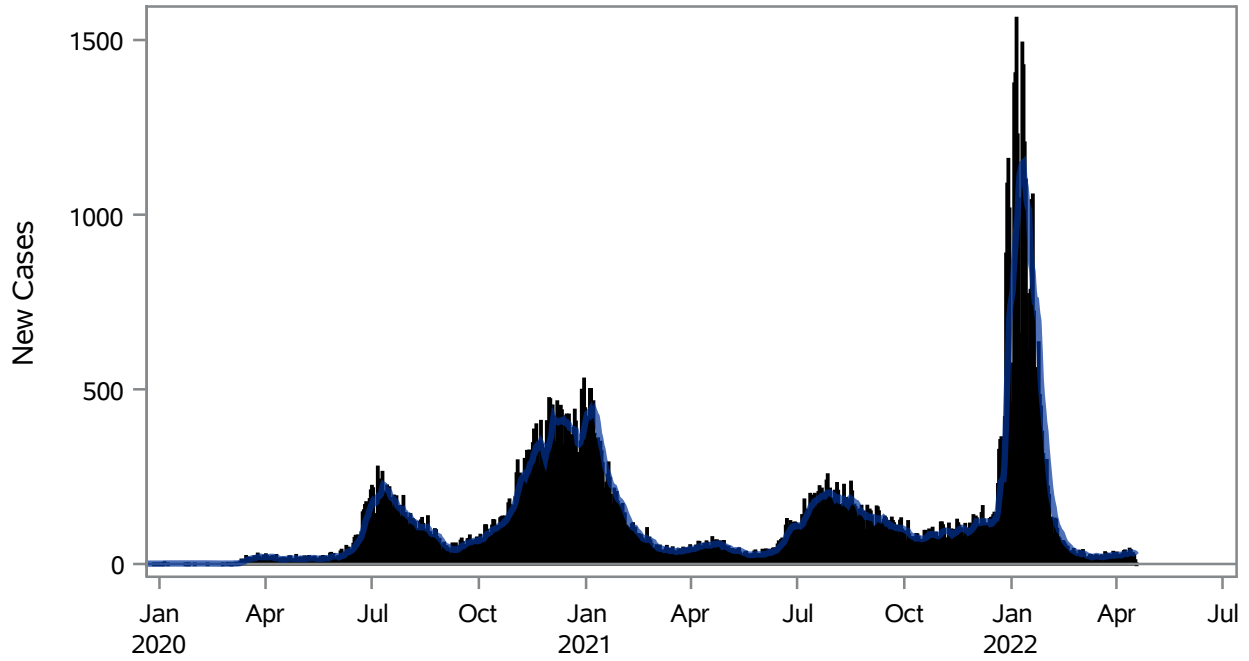


COVID19 Cases for Henderson, 7-Day Moving Average



■ New Cases — 7-Day Moving Average

Investigations are ongoing; data are subject to change.

Reporting through 18APR2022

Henderson zip codes include 89002, 89011, 89012, 89014, 89015, 89044, 89052, 89074, 89119, 89120, 89122, 89123, 89124, 89183.

Table 1: New COVID19 Cases and 7-Day Moving Average in Henderson, Previous Two Weeks

Date (Daily)	New Cases	7-Day Moving Average
05APR2022	24	24.86
06APR2022	29	26.29
07APR2022	36	27.86
08APR2022	38	28.71
09APR2022	28	29.43
10APR2022	20	28.71
11APR2022	31	29.43
12APR2022	43	32.14
13APR2022	39	33.57
14APR2022	31	32.86
15APR2022	30	31.71
16APR2022	25	31.29

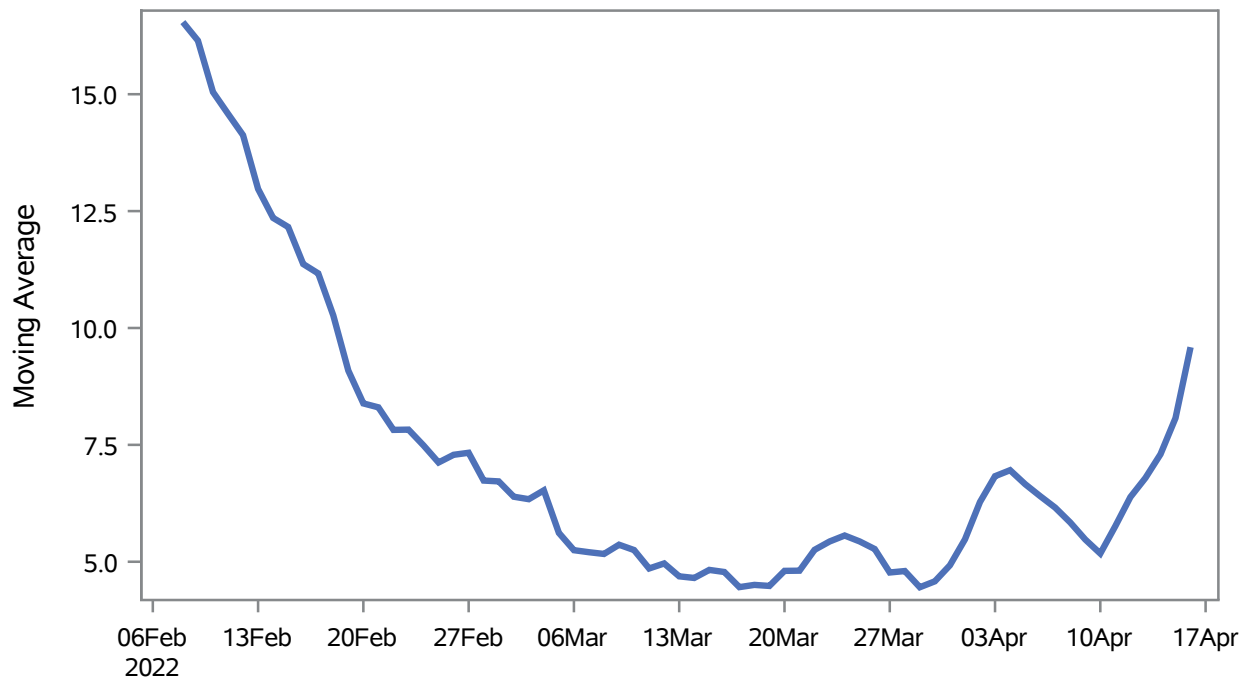
Note1: Event Date is calculated as follows based on completed information:
1) Disease onset date 2) Disease diagnosis date 3) Lab result collection date 4) Report date to SNHD.

Investigations are ongoing; data are subject to change.

Reporting through 18APR2022

Henderson zip codes include 89002, 89011, 89012, 89014, 89015, 89044, 89052, 89074, 89119, 89120, 89122, 89123, 89124, 89183.

Percent of People Receiving COVID-19 Viral Tests Who Have Positive Results in Henderson



Investigations are ongoing; data are subject to change.

Reporting through 18APR2022

Henderson zip codes include 89002, 89011, 89012, 89014, 89015, 89044, 89052, 89074, 89119, 89120, 89122, 89123, 89124, 89183.

Table 2: Percent of People Receiving COVID-19 Viral Tests Who Have Positive Results in Henderson

Collection Date	Positive	Negative	Equivocal	Total	% Positivity	7-Day Moving Average
02APR2022	23	210	1	234	9.83	6.28
03APR2022	15	197		212	7.08	6.83
04APR2022	23	416	3	442	5.20	6.96
05APR2022	15	392	1	408	3.68	6.66
06APR2022	18	440	1	459	3.92	6.40
07APR2022	22	423		445	4.94	6.16
08APR2022	27	405	1	433	6.24	5.84
09APR2022	24	306		330	7.27	5.48
10APR2022	11	210		221	4.98	5.18
11APR2022	34	330	1	365	9.32	5.76
12APR2022	32	367		399	8.02	6.38
13APR2022	23	315	1	339	6.78	6.79
14APR2022	32	345		377	8.49	7.30
15APR2022	43	326		369	11.65	8.07
16APR2022	39	179		218	17.89	9.59

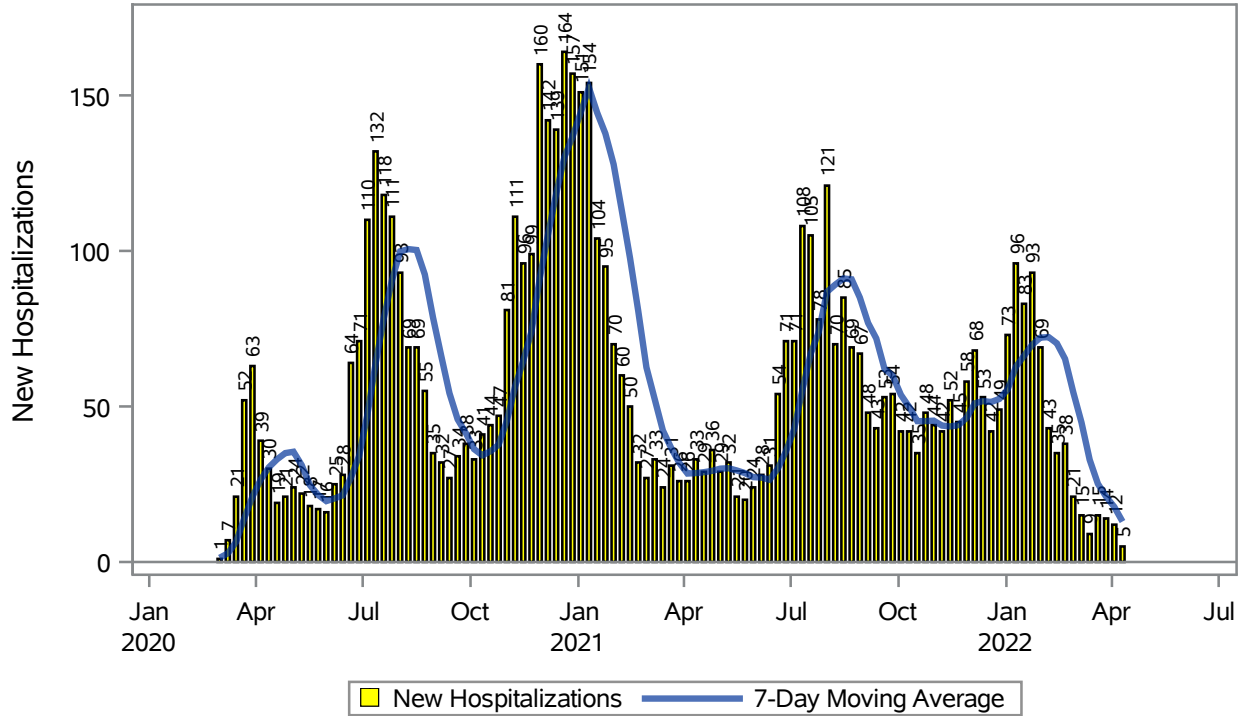
Note: Testing Data includes a 3 day delay

Investigations are ongoing; data are subject to change.

Reporting through 18APR2022

Henderson zip codes include 89002, 89011, 89012, 89014, 89015, 89044, 89052, 89074, 89119, 89120, 89122, 89123, 89124, 89183.

COVID19 Hospitalizations for Henderson, 7-Day Moving Average



Investigations are ongoing; data are subject to change.

Reporting through 18APR2022

Henderson zip codes include 89002, 89011, 89012, 89014, 89015, 89044, 89052, 89074, 89119, 89120, 89122, 89123, 89124, 89183.

Table 3: New COVID19-Related Hospitalizations and 7-Day Moving Average in Henderson, previous month

Week	Hospitalizations	7-Day Moving Average
20MAR2022	15	25.1
27MAR2022	14	21.0
03APR2022	12	17.7
10APR2022	5	13.0

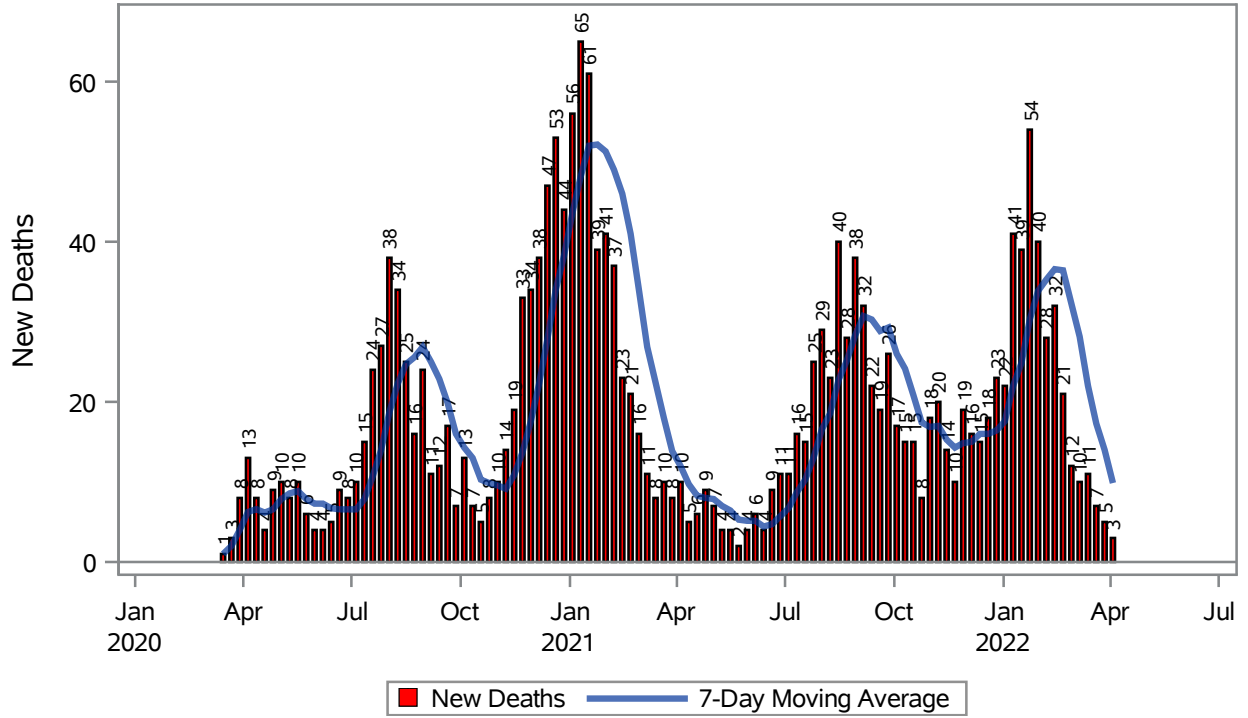
Note1: Admission Date is calculated as follows based on completed information:
A) COVID19 Case is hospitalized B) COVID19 Case has a hospital admission date.

If admission date is missing, then the following is substituted temporarily, in order:
1) Disease onset date 2) Disease diagnosis date 3) Lab result collection date 4) Report date to SNHD.

**Investigations are ongoing; data are subject to change.
Reporting through 18APR2022**

Henderson zip codes include 89002, 89011, 89012, 89014, 89015, 89044, 89052, 89074, 89119, 89120, 89122, 89123, 89124, 89183.

COVID19 Deaths for Henderson, 7-Day Moving Average



Investigations are ongoing; data are subject to change.

Reporting through 18APR2022

Henderson zip codes include 89002, 89011, 89012, 89014, 89015, 89044, 89052, 89074, 89119, 89120, 89122, 89123, 89124, 89183.

Table 4: New COVID19-Related Deaths and 7-Day Moving Average in Henderson, Previous Month

Week	Deaths	7-Day Moving Average
20MAR2022	7	17.3
27MAR2022	5	14.0
03APR2022	3	9.86

Note1: Date of Death is calculated as follows based on completed information:
A) COVID19 Case is reported as deceased B) COVID19 Case has a reported date of death.

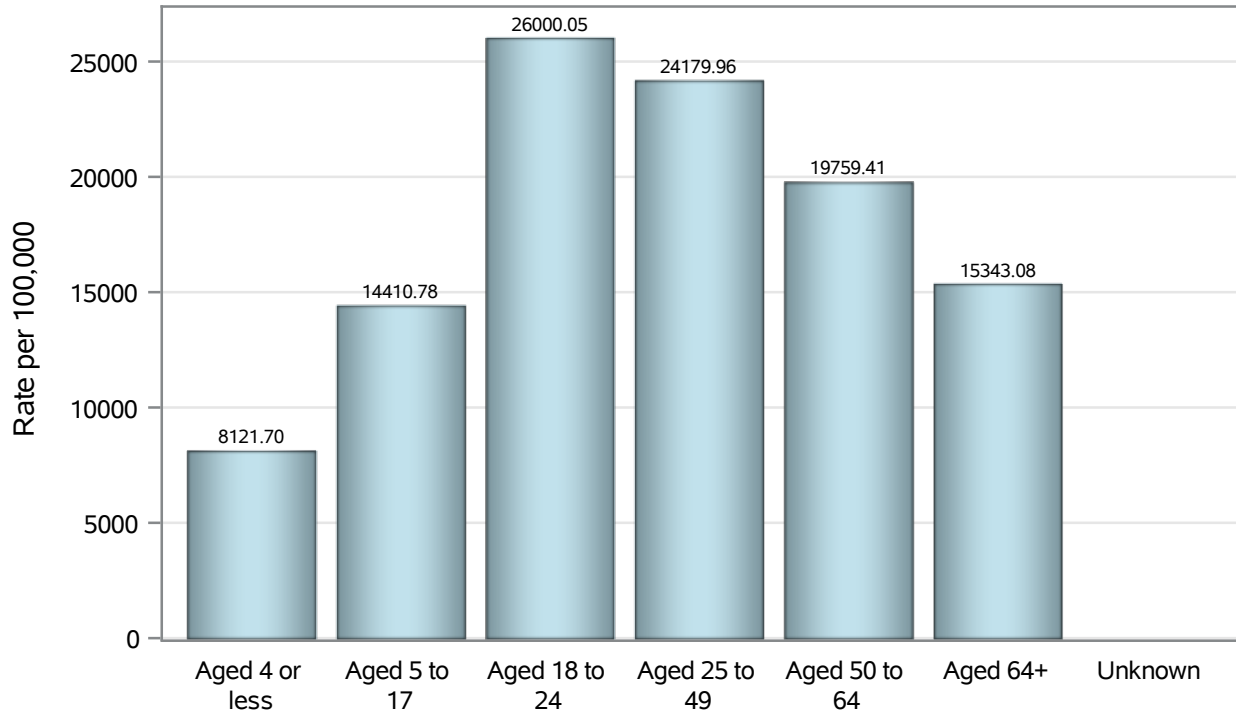
If date of death is missing, then the following is substituted temporarily, in order:
1) Disease onset date 2) Disease diagnosis date
3) Lab result collection date 4) Report date to SNHD.

Investigations are ongoing; data are subject to change.

Reporting through 18APR2022

Henderson zip codes include 89002, 89011, 89012, 89014, 89015, 89044, 89052, 89074, 89119, 89120, 89122, 89123, 89124, 89183.

Case Age Rates in Henderson

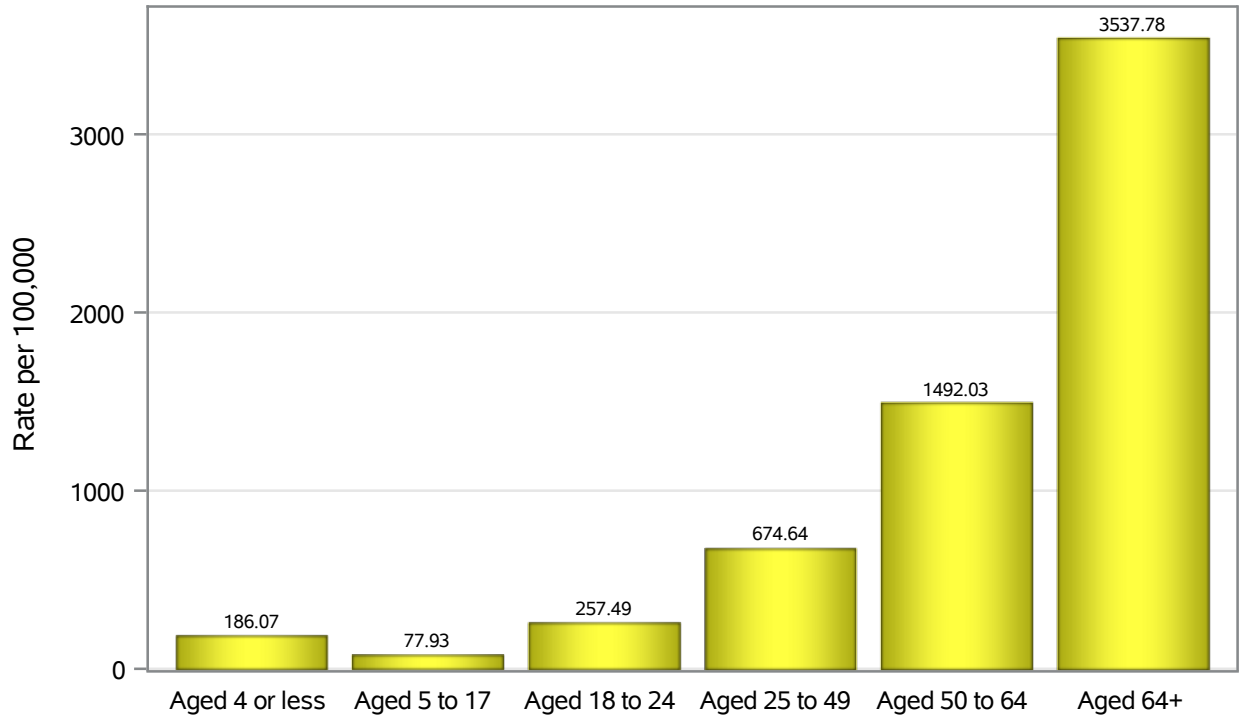


Investigations are ongoing; data are subject to change.

Reporting through 18APR2022

Henderson zip codes include 89002, 89011, 89012, 89014, 89015, 89044, 89052, 89074, 89119, 89120, 89122, 89123, 89124, 89183.

Hospitalization Age Rates in Henderson

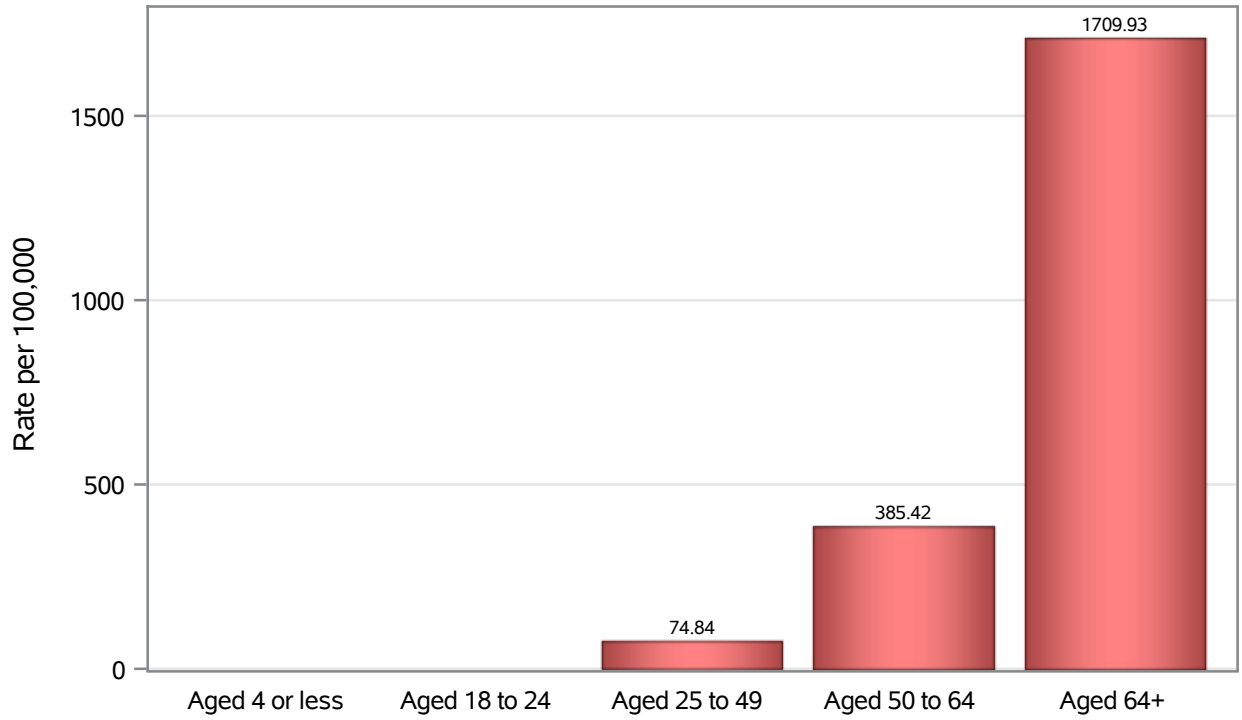


Investigations are ongoing; data are subject to change.

Reporting through 18APR2022

Henderson zip codes include 89002, 89011, 89012, 89014, 89015, 89044, 89052, 89074, 89119, 89120, 89122, 89123, 89124, 89183.

Death Age Rates in Henderson



Investigations are ongoing; data are subject to change.

Reporting through 18APR2022

Henderson zip codes include 89002, 89011, 89012, 89014, 89015, 89044, 89052, 89074, 89119, 89120, 89122, 89123, 89124, 89183.

Table 5: Age and COVID19 in Henderson

Case Status	Age Categories	N	%	Population	Rate per 100,000
Cases	Aged 4 or less	2357	2.3	29,021	8121.7
	Aged 5 to 17	11835	11.3	82,126	14411
	Aged 18 to 24	11511	11.0	44,273	26000
	Aged 25 to 49	45232	43.3	187064	24180
	Aged 50 to 64	20302	19.4	102746	19759
	Aged 64+	13271	12.7	86,495	15343
	Unknown	18	0.0	.	.
Hospitalizations	Aged 4 or less	54	0.9	29,021	186.07
	Aged 5 to 17	64	1.1	82,126	77.93
	Aged 18 to 24	114	1.9	44,273	257.49
	Aged 25 to 49	1262	20.7	187064	674.64
	Aged 50 to 64	1533	25.2	102746	1492.0
	Aged 64+	3060	50.3	86,495	3537.8
Deaths	Aged 4 or less	2	0.1	29,021	.
	Aged 18 to 24	3	0.1	44,273	.
	Aged 25 to 49	140	6.9	187064	74.84
	Aged 50 to 64	396	19.6	102746	385.42
	Aged 64+	1479	73.2	86,495	1709.9

Note1: Population data source for calculating rate estimates: U.S. Census Bureau, ACS 5-year estimate.

Note2: Rates for categories with fewer than 12 cases are suppressed due to high relative standard error.

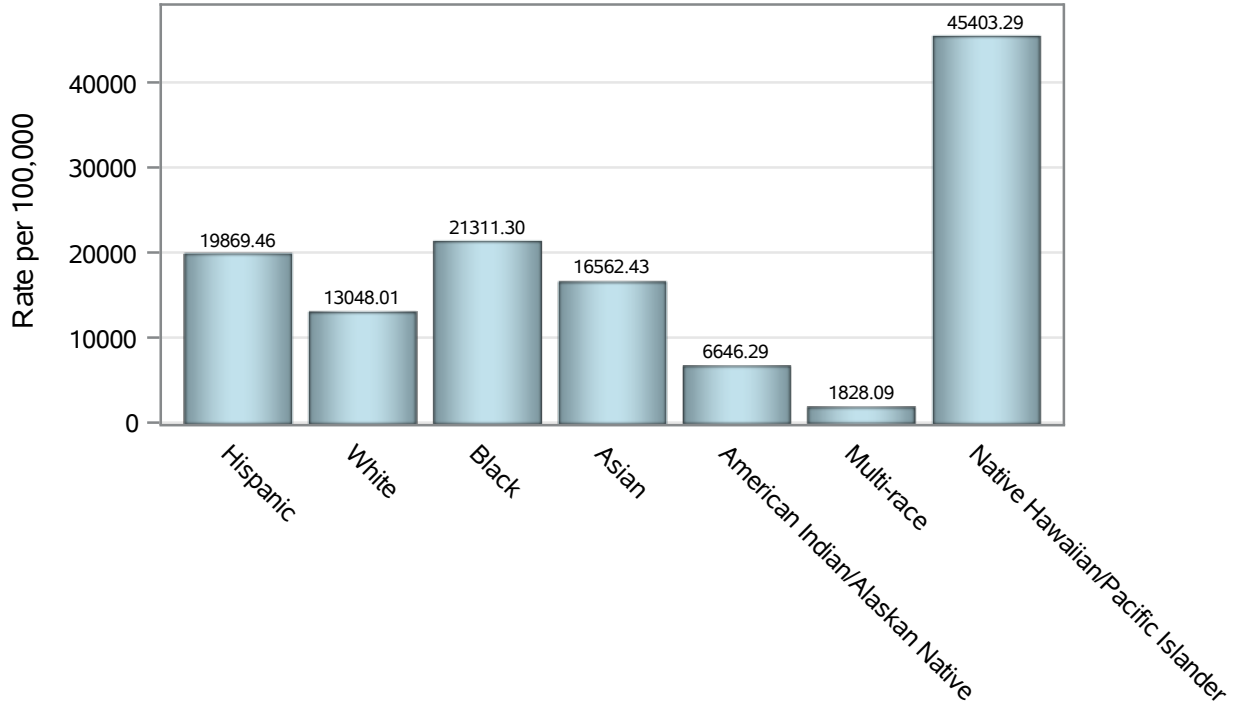
Note3: Hospitalizations are regardless of deceased status; Deaths are regardless of hospitalization status

Investigations are ongoing; data are subject to change.

Reporting through 18APR2022

Henderson zip codes include 89002, 89011, 89012, 89014, 89015, 89044, 89052, 89074, 89119, 89120, 89122, 89123, 89124, 89183.

Case Race/Ethnicity Rates in Henderson

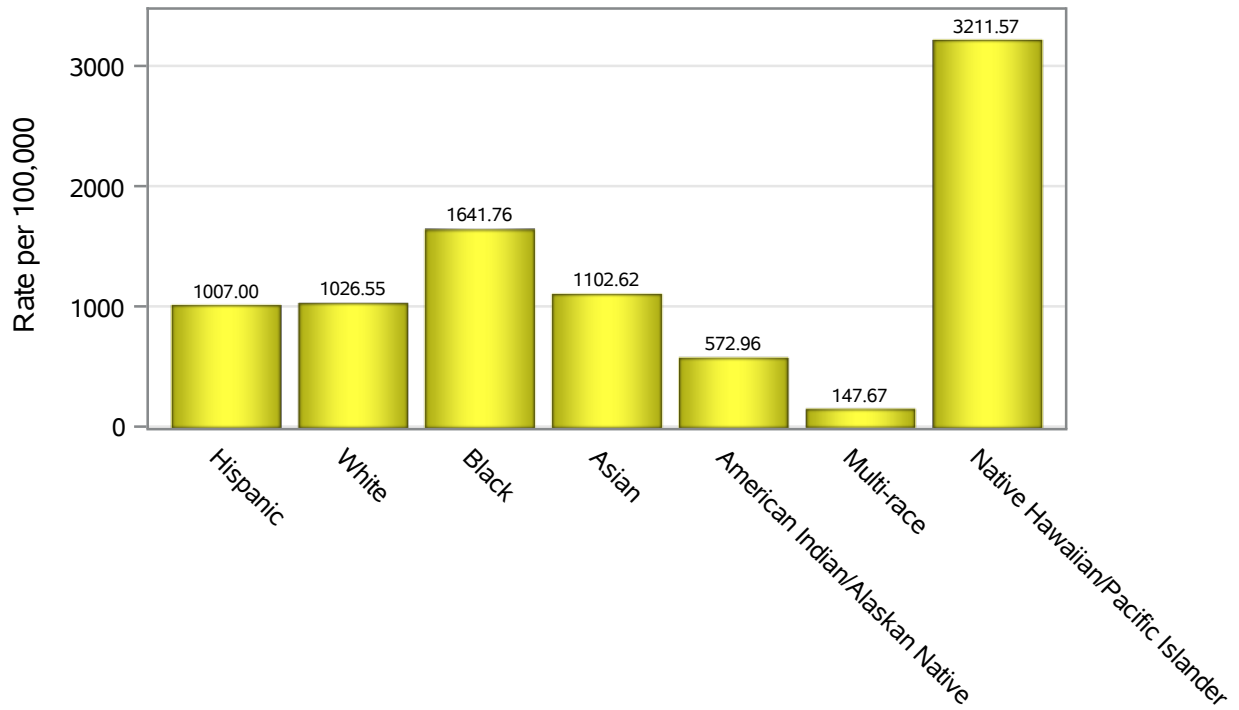


Investigations are ongoing; data are subject to change.

Reporting through 18APR2022

Henderson zip codes include 89002, 89011, 89012, 89014, 89015, 89044, 89052, 89074, 89119, 89120, 89122, 89123, 89124, 89183.

Hospitalization Race/Ethnicity Rates in Henderson

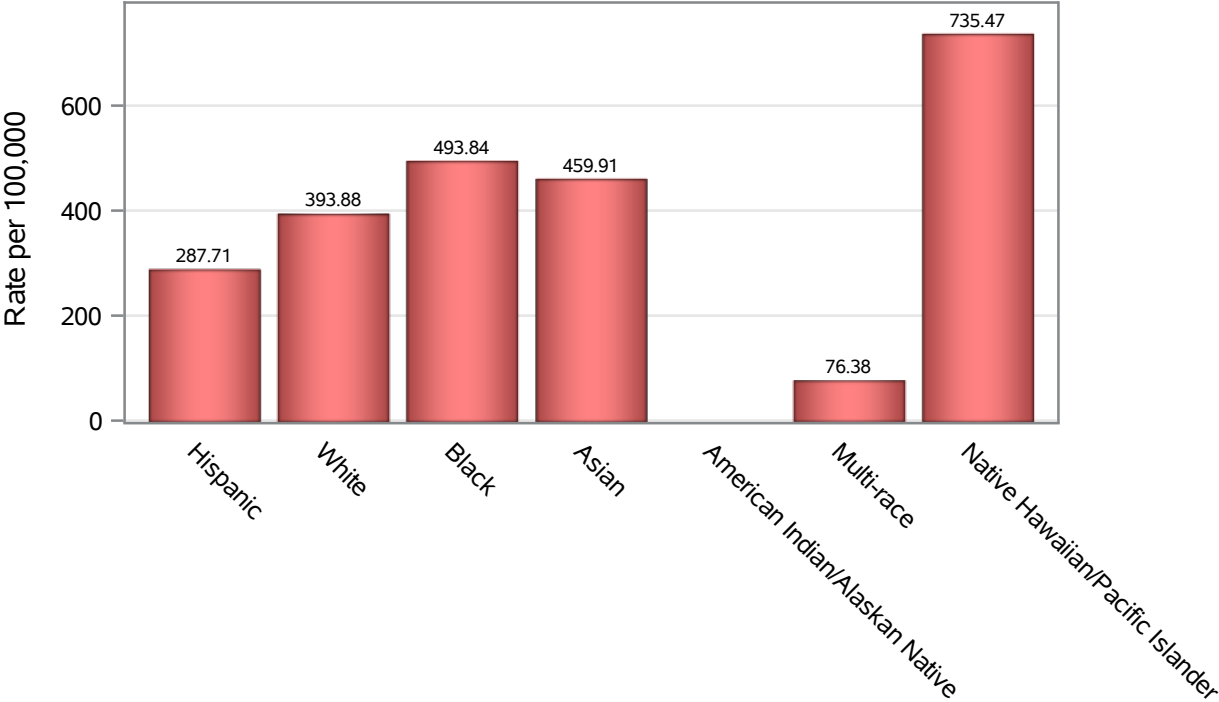


Investigations are ongoing; data are subject to change.

Reporting through 18APR2022

Henderson zip codes include 89002, 89011, 89012, 89014, 89015, 89044, 89052, 89074, 89119, 89120, 89122, 89123, 89124, 89183.

Death Race/Ethnicity Rates in Henderson



Investigations are ongoing; data are subject to change.

Reporting through 18APR2022

Henderson zip codes include 89002, 89011, 89012, 89014, 89015, 89044, 89052, 89074, 89119, 89120, 89122, 89123, 89124, 89183.

Table 6: Race/Ethnicity and COVID19 in Henderson

Case Status	Race Ethnicity Categories	N	%	Population	Rate per 100,000
Cases	Hispanic	24171	23.1	121649	19869
	White	38030	36.4	291462	13048
	Black	8113	7.8	38,069	21311
	Asian	8607	8.2	51,967	16562
	American Indian/Alaskan Native	174	0.2	2,618	6646.3
	Multi-race	359	0.3	19,638	1828.1
	Native Hawaiian/Pacific Islander	1852	1.8	4,079	45403
	Unknown	23220	22.2	.	.
Hospitalizations	Hispanic	1225	20.1	121649	1007.0
	White	2992	49.2	291462	1026.5
	Black	625	10.3	38,069	1641.8
	Asian	573	9.4	51,967	1102.6
	American Indian/Alaskan Native	15	0.2	2,618	572.96
	Multi-race	29	0.5	19,638	147.67
	Native Hawaiian/Pacific Islander	131	2.2	4,079	3211.6
	Unknown	497	8.2	.	.
Deaths	Hispanic	350	17.3	121649	287.71
	White	1148	56.8	291462	393.88
	Black	188	9.3	38,069	493.84
	Asian	239	11.8	51,967	459.91
	American Indian/Alaskan Native	8	0.4	2,618	.
	Multi-race	15	0.7	19,638	76.38
	Native Hawaiian/Pacific Islander	30	1.5	4,079	735.47
	Unknown	42	2.1	.	.

Note1: Population data source for calculating rate estimates: U.S. Census Bureau, ACS 5-year estimate.

Note2: Rates for categories with fewer than 12 cases are suppressed due to high relative standard error.

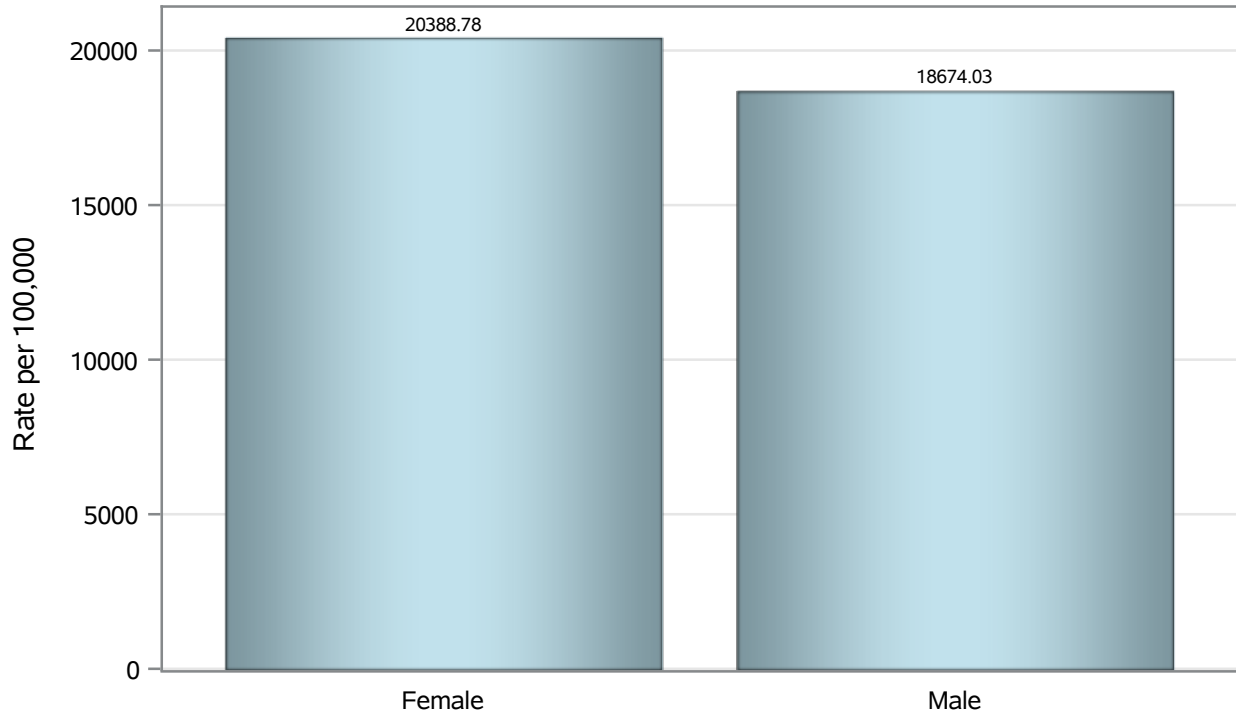
Note3: Hospitalizations are regardless of deceased status; Deaths are regardless of hospitalization status

Investigations are ongoing; data are subject to change.

Reporting through 18APR2022

Henderson zip codes include 89002, 89011, 89012, 89014, 89015, 89044, 89052, 89074, 89119, 89120, 89122, 89123, 89124, 89183.

Case Birth Sex Rates in Henderson

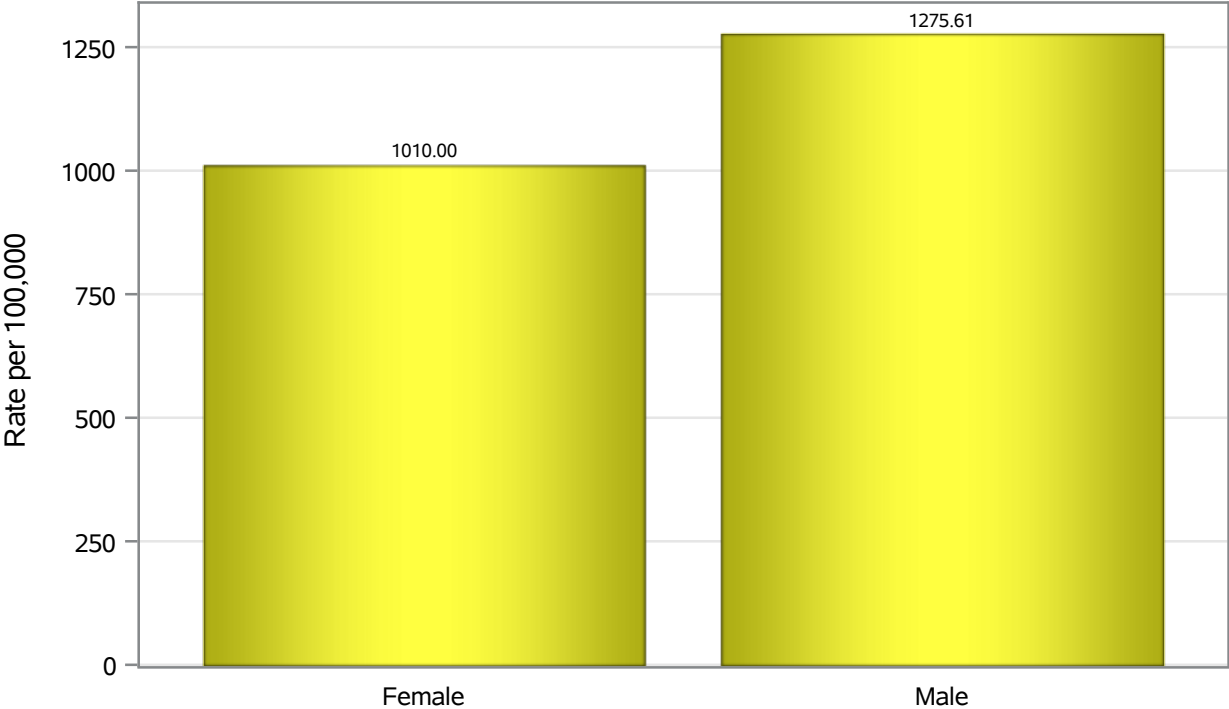


Investigations are ongoing; data are subject to change.

Reporting through 18APR2022

Henderson zip codes include 89002, 89011, 89012, 89014, 89015, 89044, 89052, 89074, 89119, 89120, 89122, 89123, 89124, 89183.

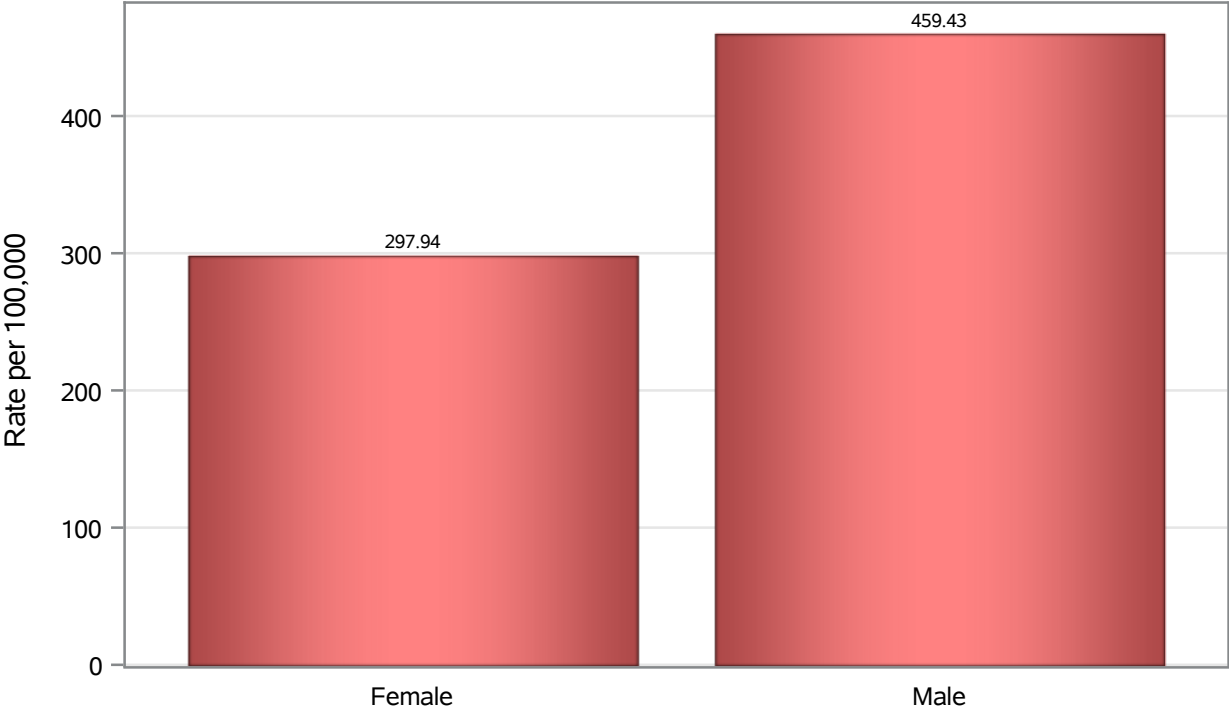
Hospitalization Birth Sex Rates in Henderson



Investigations are ongoing; data are subject to change.
Reporting through 18APR2022

Henderson zip codes include 89002, 89011, 89012, 89014, 89015, 89044, 89052, 89074, 89119, 89120, 89122, 89123, 89124, 89183.

Death Birth Sex Rates in Henderson



Investigations are ongoing; data are subject to change.
Reporting through 18APR2022

Henderson zip codes include 89002, 89011, 89012, 89014, 89015, 89044, 89052, 89074, 89119, 89120, 89122, 89123, 89124, 89183.

Table 7: Birth Sex and COVID19 in Henderson

Case Status	Birth Sex Categories	N	%	Population	Rate per 100,000
Cases	Female	54404	52.0	266833	20389
	Male	49466	47.3	264892	18674
	Unknown	656	0.6	.	.
Hospitalizations	Female	2695	44.3	266833	1010.0
	Male	3379	55.5	264892	1275.6
	Unknown	13	0.2	.	.
Deaths	Female	795	39.4	266833	297.94
	Male	1217	60.2	264892	459.43
	Unknown	8	0.4	.	.

Note1: Population data source for calculating rate estimates: U.S. Census Bureau, ACS 5-year estimate.

Note2: Rates for categories with fewer than 12 cases are suppressed due to high relative standard error.

Note3: Hospitalizations are regardless of deceased status; Deaths are regardless of hospitalization status

Investigations are ongoing; data are subject to change.

Reporting through 18APR2022

Henderson zip codes include 89002, 89011, 89012, 89014, 89015, 89044, 89052, 89074, 89119, 89120, 89122, 89123, 89124, 89183.