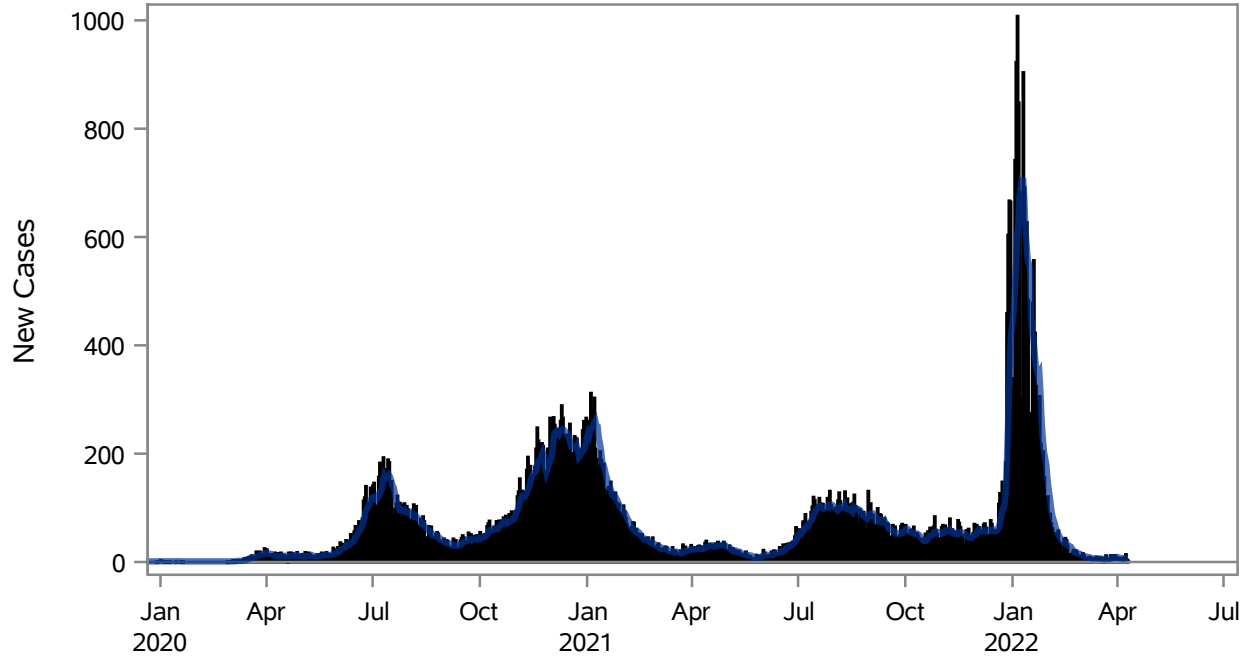


### COVID19 Cases for North Las Vegas, 7-Day Moving Average



■ New Cases    — 7-Day Moving Average

Investigations are ongoing; data are subject to change.

Reporting through 11APR2022

North Las Vegas zip codes include 89030, 89031, 89032, 89033, 89036, 89081, 89084, 89085, 89086, 89087.

**Table 1: New COVID19 Cases and 7-Day Moving Average in North Las Vegas, Previous Two Weeks**

Date (Daily)	New Cases	7-Day Moving Average
29MAR2022	12	7.43
30MAR2022	12	8.71
31MAR2022	3	8.71
01APR2022	8	9.14
02APR2022	6	8.29
03APR2022	3	7.00
04APR2022	7	7.29
05APR2022	7	6.57
06APR2022	6	5.71
07APR2022	9	6.57
08APR2022	14	7.43
09APR2022	4	7.14

---

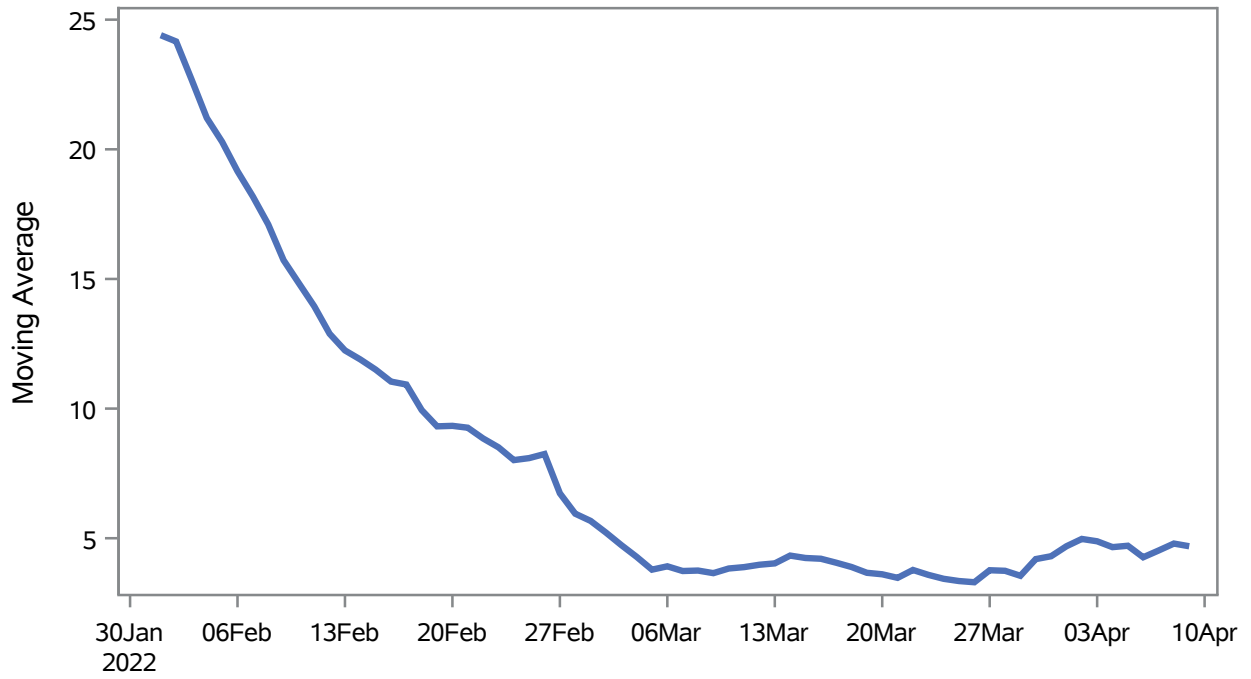
Note1: Event Date is calculated as follows based on completed information:  
1) Disease onset date 2) Disease diagnosis date 3) Lab result collection date 4) Report date to SNHD.

---

**Investigations are ongoing; data are subject to change.  
Reporting through 11APR2022**

**North Las Vegas zip codes include 89030, 89031, 89032, 89033, 89036, 89081, 89084, 89085, 89086, 89087.**

### Percent of People Receiving COVID-19 Viral Tests Who Have Positive Results in North Las Vegas



Investigations are ongoing; data are subject to change.

Reporting through 11APR2022

North Las Vegas zip codes include 89030, 89031, 89032, 89033, 89036, 89081, 89084, 89085, 89086, 89087.

**Table 2: Percent of People Receiving COVID-19 Viral Tests Who Have Positive Results in North Las Vegas**

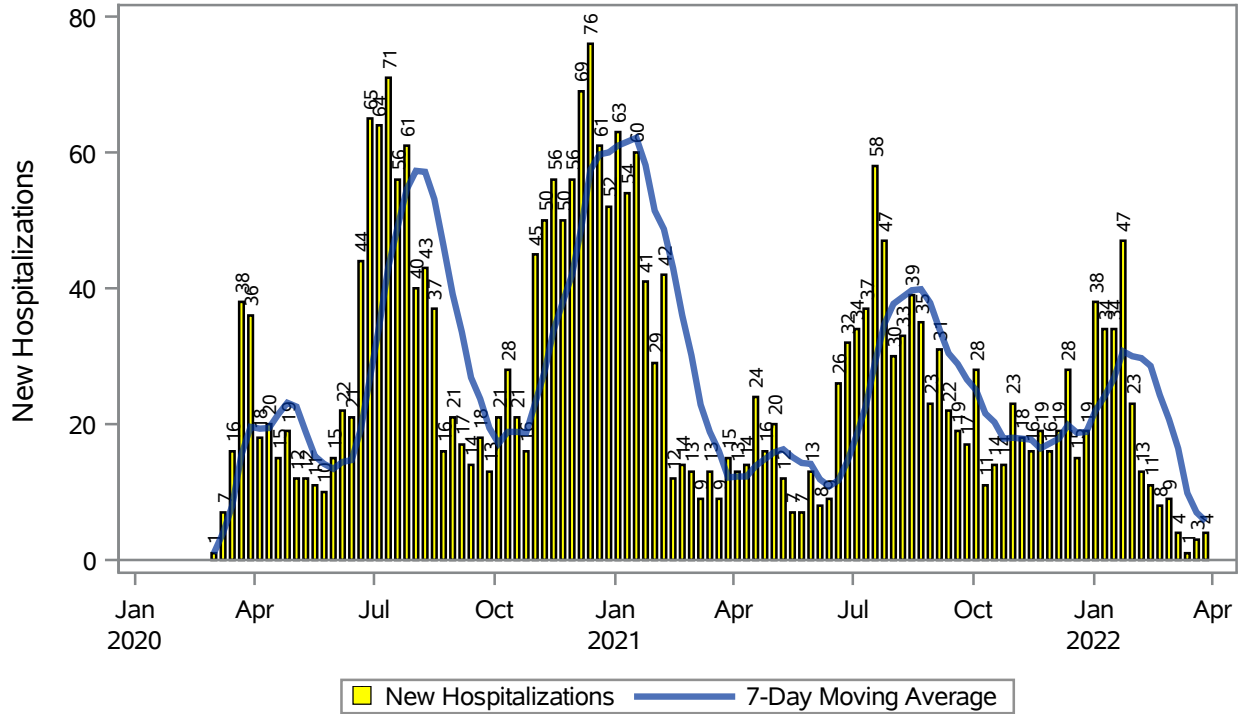
Collection Date	Positive	Negative	Equivocal	Total	% Positivity	7-Day Moving Average
26MAR2022	5	132		137	3.65	3.30
27MAR2022	9	118		127	7.09	3.77
28MAR2022	14	334		348	4.02	3.74
29MAR2022	11	278		290	3.79	3.55
30MAR2022	18	291		310	5.81	4.19
31MAR2022	7	275		282	2.48	4.31
01APR2022	16	251		267	5.99	4.69
02APR2022	9	151		160	5.63	4.97
03APR2022	8	116		124	6.45	4.88
04APR2022	7	278	1	286	2.45	4.66
05APR2022	13	299		312	4.17	4.71
06APR2022	8	289		297	2.69	4.27
07APR2022	13	289		302	4.30	4.53
08APR2022	20	234		254	7.87	4.79
09APR2022	7	136		143	4.90	4.69

Note: Testing Data includes a 3 day delay

**Investigations are ongoing; data are subject to change.  
Reporting through 11APR2022**

**North Las Vegas zip codes include 89030, 89031, 89032, 89033, 89036, 89081, 89084, 89085, 89086, 89087.**

### COVID19 Hospitalizations for North Las Vegas, 7-Day Moving Average



Investigations are ongoing; data are subject to change.

Reporting through 11APR2022

North Las Vegas zip codes include 89030, 89031, 89032, 89033, 89036, 89081, 89084, 89085, 89086, 89087.

**Table 3: New COVID19-Related Hospitalizations and 7-Day Moving Average in North Las Vegas, previous month**

Week	Hospitalizations	7-Day Moving Average
13MAR2022	1	9.86
20MAR2022	3	7.00
27MAR2022	4	5.71

---

Note1: Admission Date is calculated as follows based on completed information:  
A) COVID19 Case is hospitalized B) COVID19 Case has a hospital admission date.

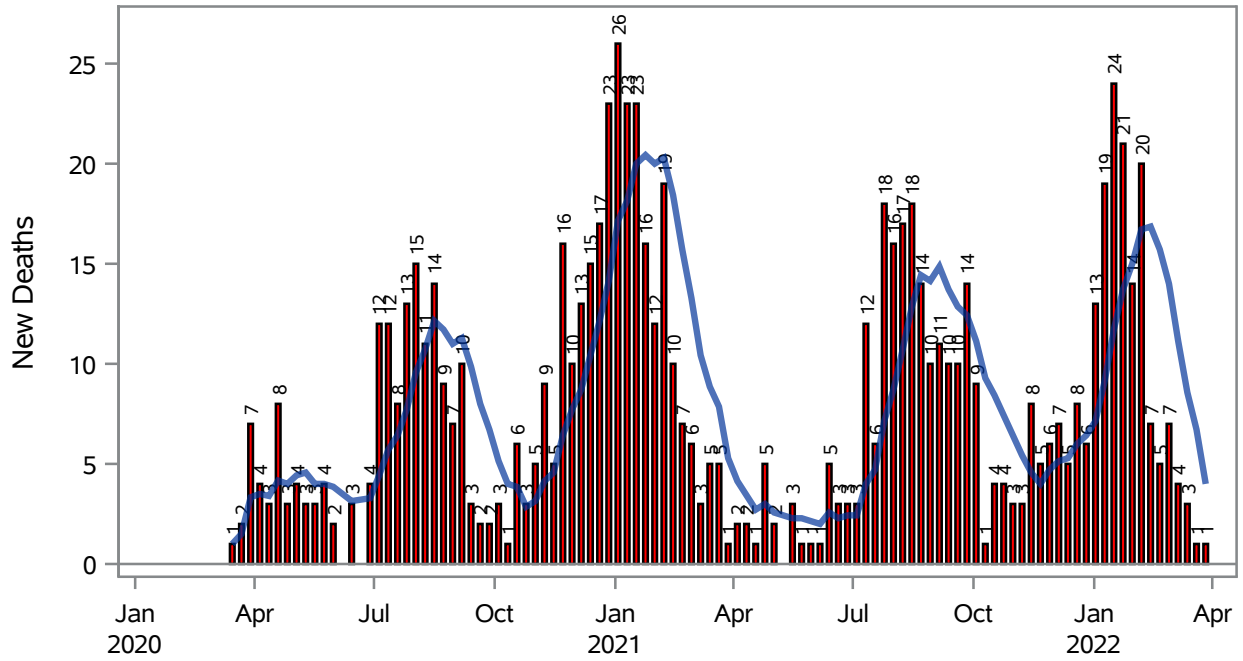
If admission date is missing, then the following is substituted temporarily, in order:  
1) Disease onset date 2) Disease diagnosis date 3) Lab result collection date 4) Report date to SNHD.

---

**Investigations are ongoing; data are subject to change.  
Reporting through 11APR2022**

**North Las Vegas zip codes include 89030, 89031, 89032, 89033, 89036, 89081, 89084, 89085, 89086, 89087.**

### COVID19 Deaths for North Las Vegas, 7-Day Moving Average



■ New Deaths      — 7-Day Moving Average

Investigations are ongoing; data are subject to change.

Reporting through 11APR2022

North Las Vegas zip codes include 89030, 89031, 89032, 89033, 89036, 89081, 89084, 89085, 89086, 89087.

**Table 4: New COVID19-Related Deaths and 7-Day Moving Average in North Las Vegas, Previous Month**

Week	Deaths	7-Day Moving Average
13MAR2022	3	8.57
20MAR2022	1	6.71
27MAR2022	1	4.00

---

Note1: Date of Death is calculated as follows based on completed information:  
A) COVID19 Case is reported as deceased B) COVID19 Case has a reported date of death.

If date of death is missing, then the following is substituted temporarily, in order:  
1) Disease onset date 2) Disease diagnosis date  
3) Lab result collection date 4) Report date to SNHD.

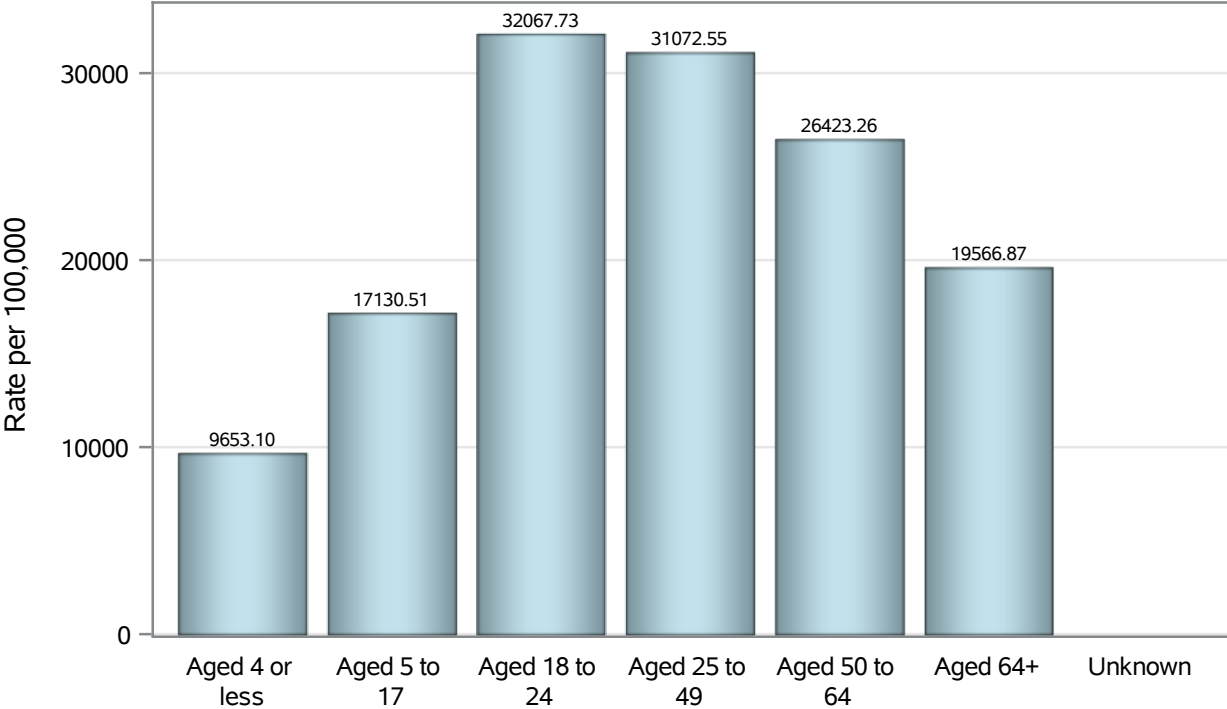
---

**Investigations are ongoing; data are subject to change.  
Reporting through 11APR2022**

**North Las Vegas zip codes include 89030, 89031, 89032, 89033, 89036, 89081, 89084, 89085, 89086, 89087.**



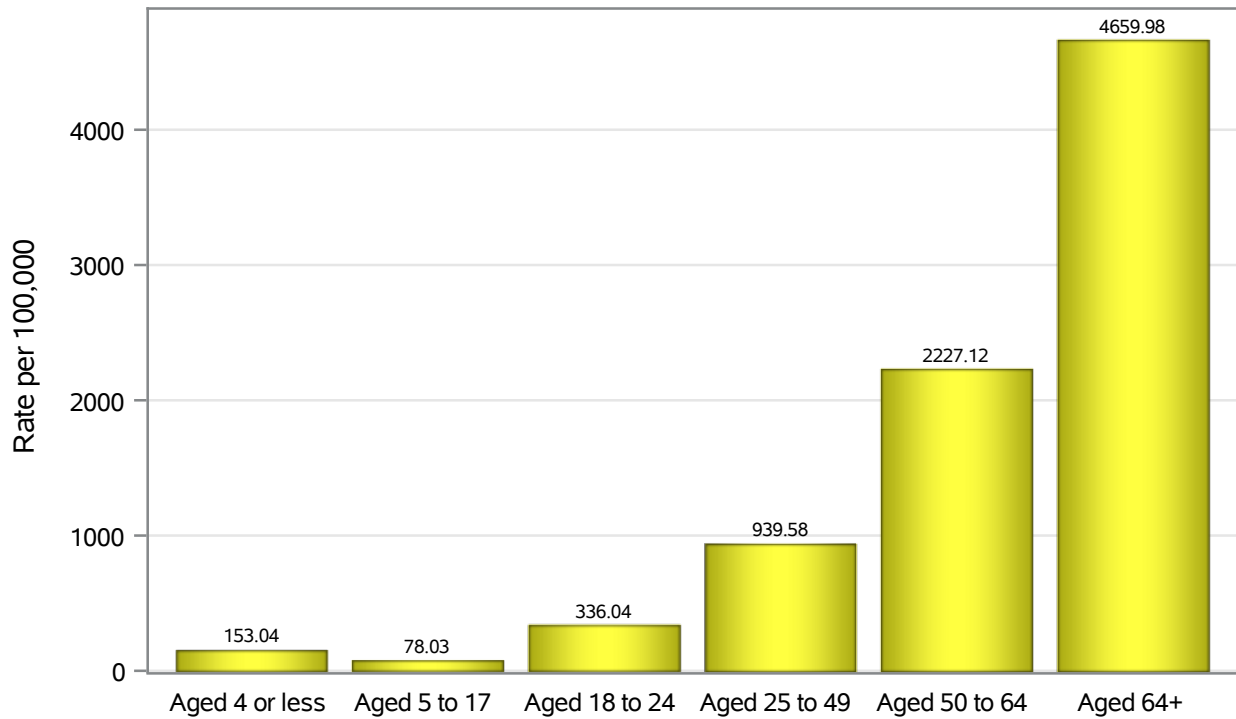
### Case Age Rates in North Las Vegas



Investigations are ongoing; data are subject to change.  
Reporting through 11APR2022

North Las Vegas zip codes include 89030, 89031, 89032, 89033, 89036, 89081, 89084, 89085, 89086, 89087.

### Hospitalization Age Rates in North Las Vegas

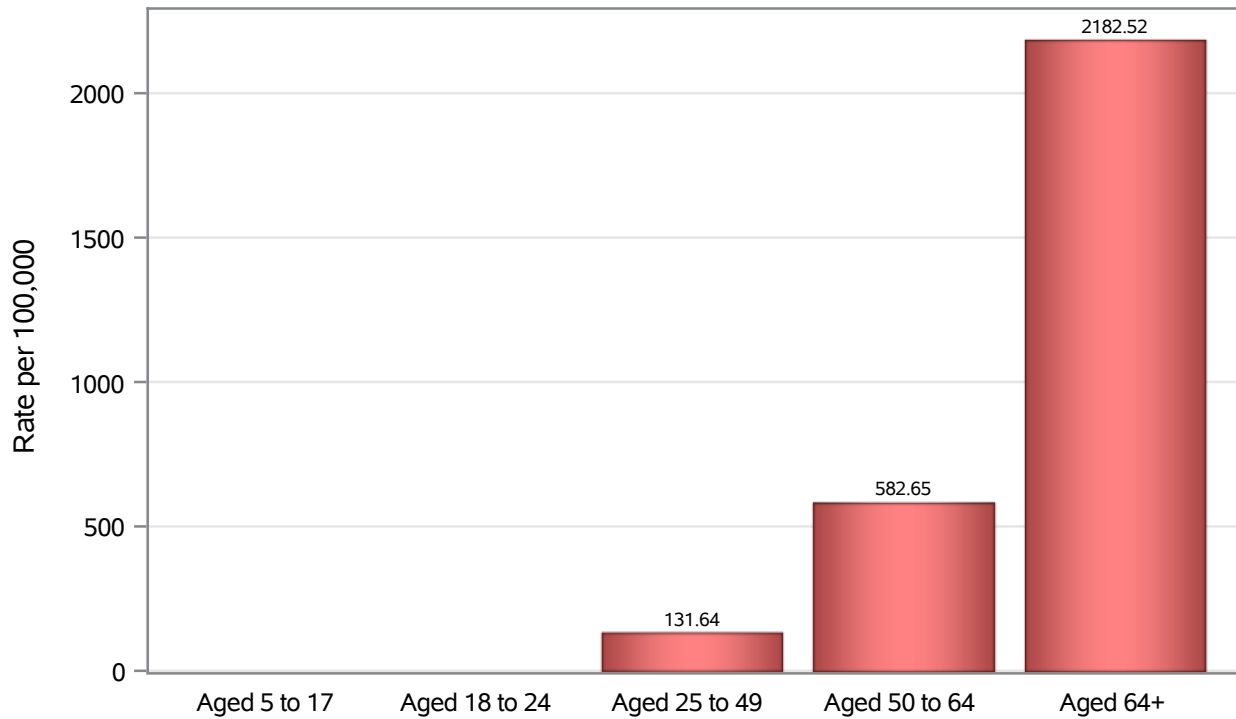


Investigations are ongoing; data are subject to change.

Reporting through 11APR2022

North Las Vegas zip codes include 89030, 89031, 89032, 89033, 89036, 89081, 89084, 89085, 89086, 89087.

### Death Age Rates in North Las Vegas



Investigations are ongoing; data are subject to change.

Reporting through 11APR2022

North Las Vegas zip codes include 89030, 89031, 89032, 89033, 89036, 89081, 89084, 89085, 89086, 89087.

**Table 5: Age and COVID19 in North Las Vegas**

Case Status	Age Categories	N	%	Population	Rate per 100,000
Cases	Aged 4 or less	1703	3.0	17,642	9653.1
	Aged 5 to 17	8562	14.8	49,981	17131
	Aged 18 to 24	7348	12.7	22,914	32068
	Aged 25 to 49	25729	44.6	82,803	31073
	Aged 50 to 64	9705	16.8	36,729	26423
	Aged 64+	4644	8.0	23,734	19567
	Unknown	8	0.0	.	.
Hospitalizations	Aged 4 or less	27	0.9	17,642	153.04
	Aged 5 to 17	39	1.4	49,981	78.03
	Aged 18 to 24	77	2.7	22,914	336.04
	Aged 25 to 49	778	27.3	82,803	939.58
	Aged 50 to 64	818	28.8	36,729	2227.1
	Aged 64+	1106	38.9	23,734	4660.0
	Deaths	Aged 5 to 17	1	0.1	49,981
Aged 18 to 24		2	0.2	22,914	.
Aged 25 to 49		109	12.9	82,803	131.64
Aged 50 to 64		214	25.4	36,729	582.65
Aged 64+		518	61.4	23,734	2182.5

Note1: Population data source for calculating rate estimates: U.S. Census Bureau, ACS 5-year estimate.

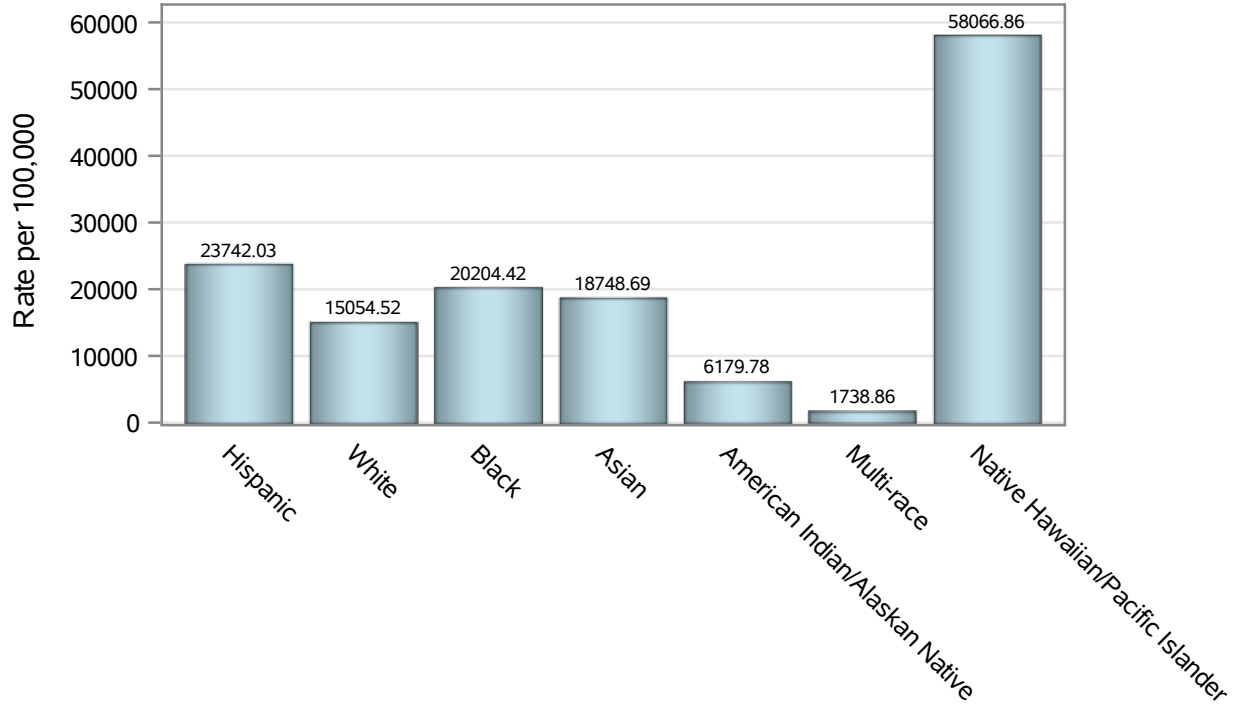
Note2: Rates for categories with fewer than 12 cases are suppressed due to high relative standard error.

Note3: Hospitalizations are regardless of deceased status; Deaths are regardless of hospitalization status

**Investigations are ongoing; data are subject to change.  
Reporting through 11APR2022**

**North Las Vegas zip codes include 89030, 89031, 89032, 89033, 89036, 89081, 89084, 89085, 89086, 89087.**

### Case Race/Ethnicity Rates in North Las Vegas

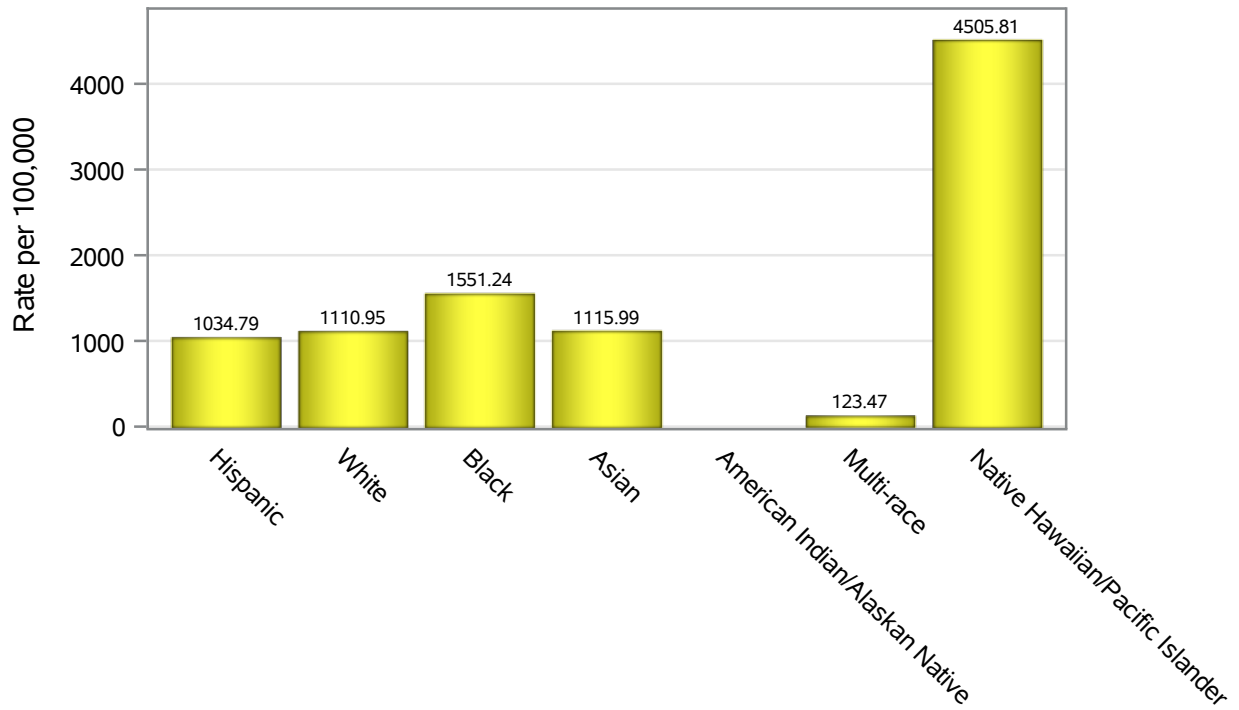


Investigations are ongoing; data are subject to change.

Reporting through 11APR2022

North Las Vegas zip codes include 89030, 89031, 89032, 89033, 89036, 89081, 89084, 89085, 89086, 89087.

### Hospitalization Race/Ethnicity Rates in North Las Vegas

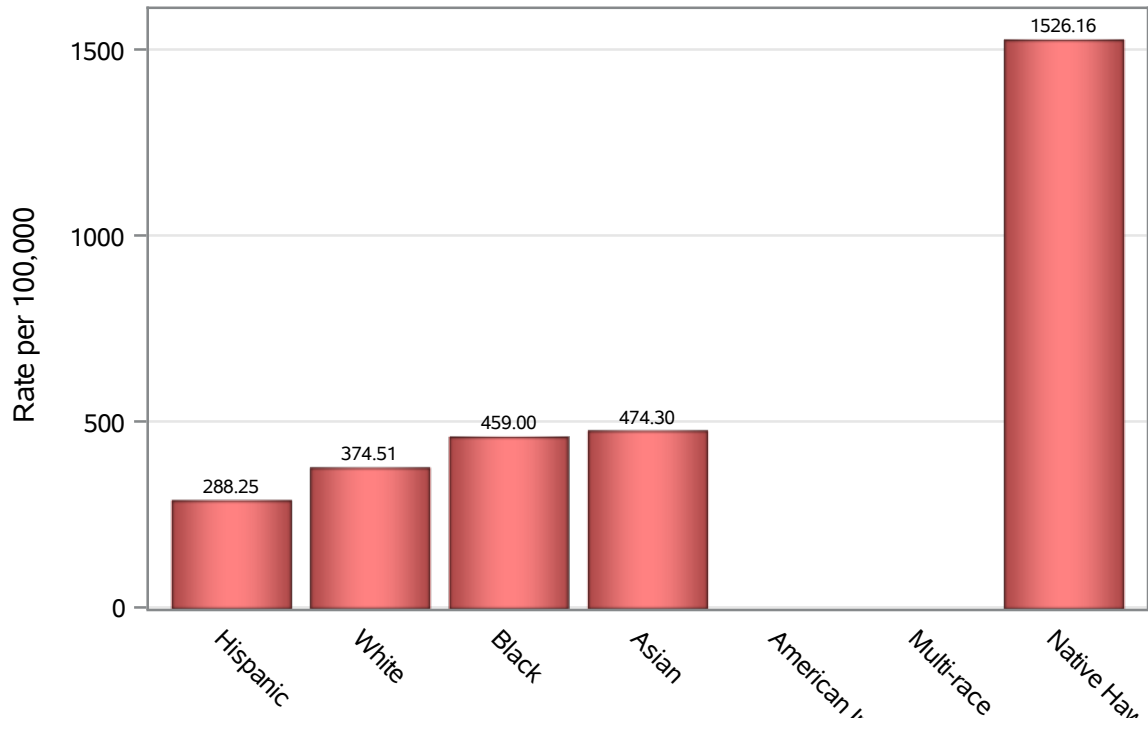


Investigations are ongoing; data are subject to change.

Reporting through 11APR2022

North Las Vegas zip codes include 89030, 89031, 89032, 89033, 89036, 89081, 89084, 89085, 89086, 89087.

### Death Race/Ethnicity Rates in North Las Vegas



Investigations are ongoing; data are subject to change.

Reporting through 11APR2022

North Las Vegas zip codes include 89030, 89031, 89032, 89033, 89036, 89081, 89084, 89085, 89086, 89087.

**Table 6: Race/Ethnicity and COVID19 in North Las Vegas**

Case Status	Race Ethnicity Categories	N	%	Population	Rate per 100,000
Cases	Hispanic	22898	39.7	96,445	23742
	White	9567	16.6	63,549	15055
	Black	9508	16.5	47,059	20204
	Asian	2688	4.7	14,337	18749
	American Indian/Alaskan Native	55	0.1	890	6179.8
	Multi-race	169	0.3	9,719	1738.9
	Native Hawaiian/Pacific Islander	799	1.4	1,376	58067
	Unknown	12015	20.8	.	.
Hospitalizations	Hispanic	998	35.1	96,445	1034.8
	White	706	24.8	63,549	1111.0
	Black	730	25.7	47,059	1551.2
	Asian	160	5.6	14,337	1116.0
	American Indian/Alaskan Native	11	0.4	890	.
	Multi-race	12	0.4	9,719	123.47
	Native Hawaiian/Pacific Islander	62	2.2	1,376	4505.8
	Unknown	166	5.8	.	.
Deaths	Hispanic	278	32.9	96,445	288.25
	White	238	28.2	63,549	374.51
	Black	216	25.6	47,059	459.00
	Asian	68	8.1	14,337	474.30
	American Indian/Alaskan Native	6	0.7	890	.
	Multi-race	6	0.7	9,719	.
	Native Hawaiian/Pacific Islander	21	2.5	1,376	1526.2
	Unknown	11	1.3	.	.

Note1: Population data source for calculating rate estimates: U.S. Census Bureau, ACS 5-year estimate.

Note2: Rates for categories with fewer than 12 cases are suppressed due to high relative standard error.

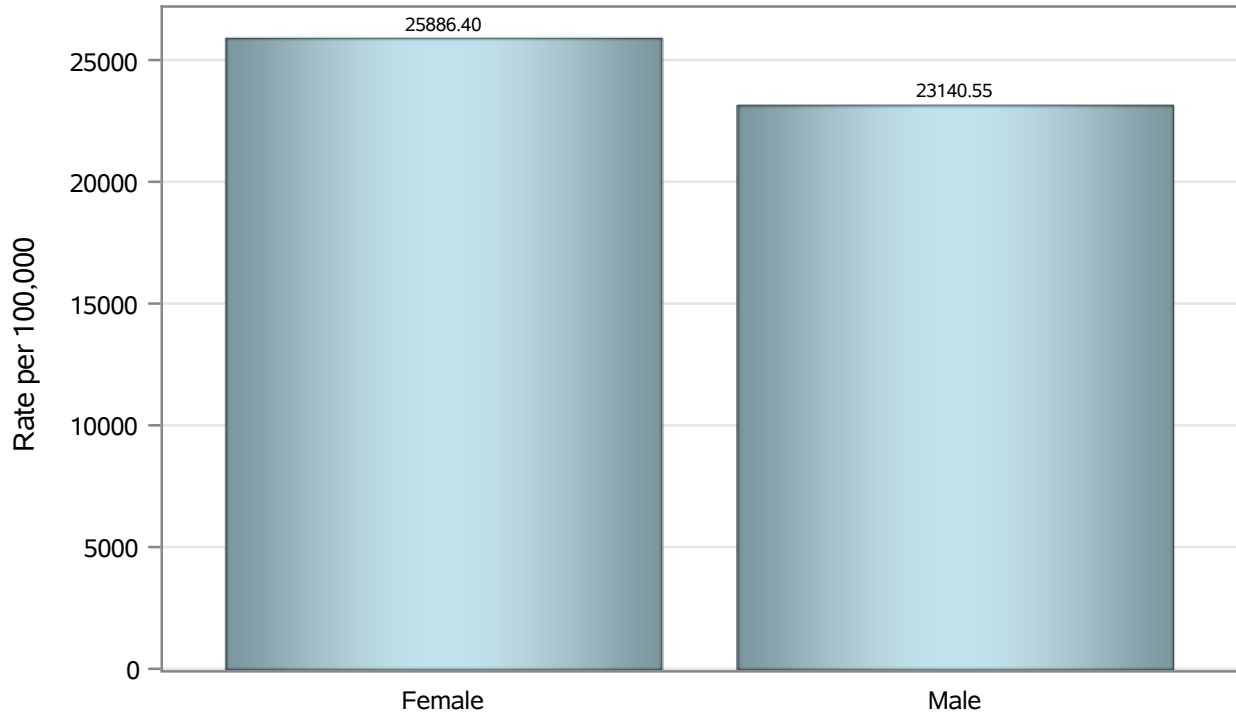
Note3: Hospitalizations are regardless of deceased status; Deaths are regardless of hospitalization status

**Investigations are ongoing; data are subject to change.  
Reporting through 11APR2022**

**North Las Vegas zip codes include 89030, 89031, 89032, 89033, 89036, 89081, 89084, 89085, 89086, 89087.**



### Case Birth Sex Rates in North Las Vegas

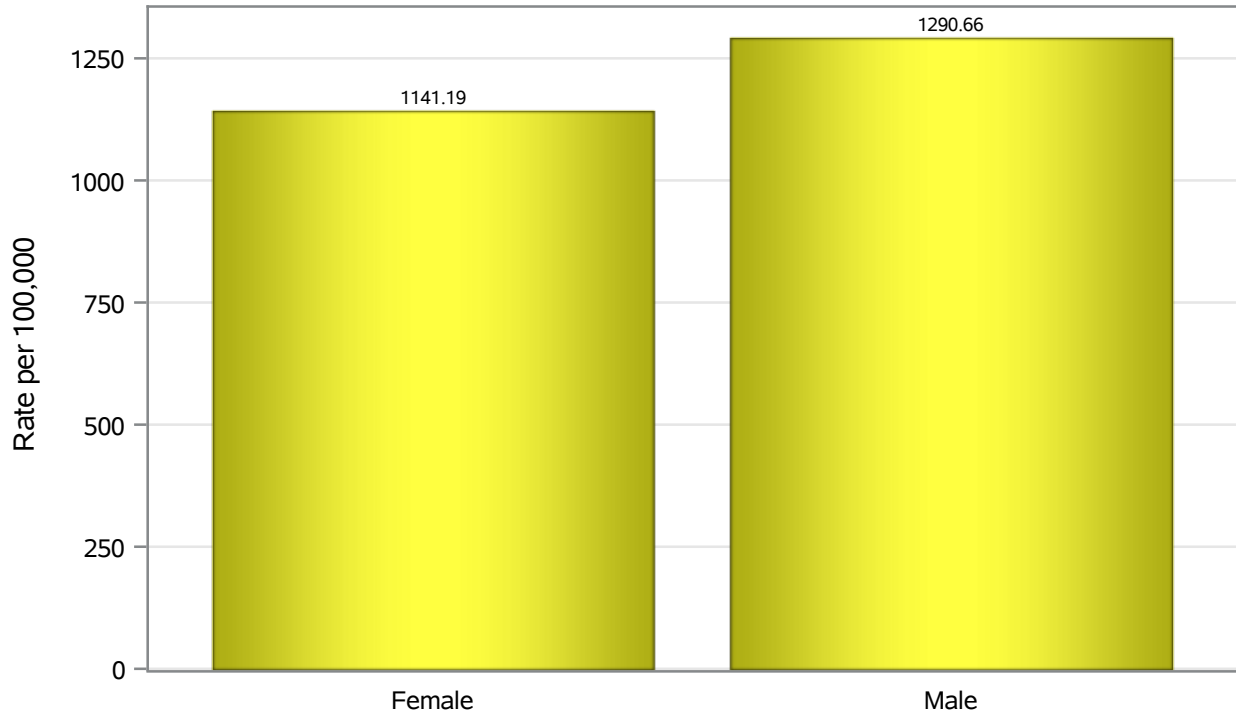


Investigations are ongoing; data are subject to change.

Reporting through 11APR2022

North Las Vegas zip codes include 89030, 89031, 89032, 89033, 89036, 89081, 89084, 89085, 89086, 89087.

### Hospitalization Birth Sex Rates in North Las Vegas

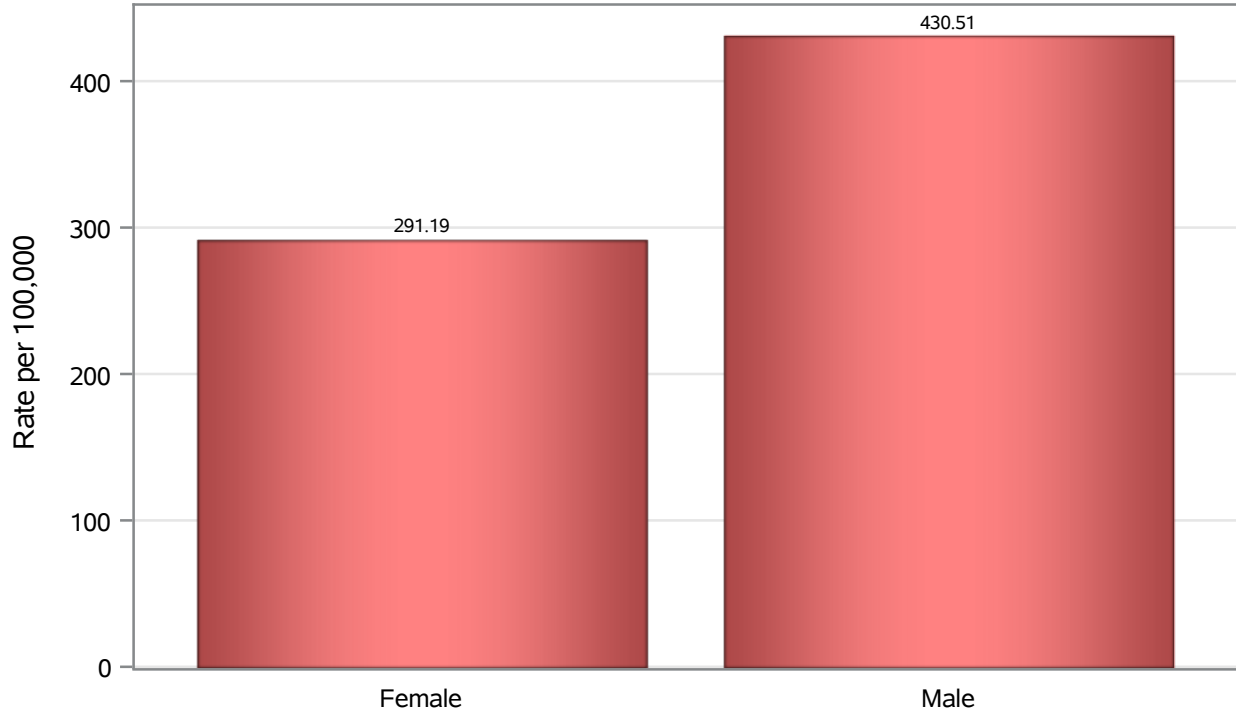


Investigations are ongoing; data are subject to change.

Reporting through 11APR2022

North Las Vegas zip codes include 89030, 89031, 89032, 89033, 89036, 89081, 89084, 89085, 89086, 89087.

### Death Birth Sex Rates in North Las Vegas



Investigations are ongoing; data are subject to change.

Reporting through 11APR2022

North Las Vegas zip codes include 89030, 89031, 89032, 89033, 89036, 89081, 89084, 89085, 89086, 89087.

**Table 7: Birth Sex and COVID19 in North Las Vegas**

Case Status	Birth Sex Categories	N	%	Population	Rate per 100,000
Cases	Female	30759	53.3	118823	25886
	Male	26607	46.1	114980	23141
	Unknown	333	0.6	.	.
Hospitalizations	Female	1356	47.7	118823	1141.2
	Male	1484	52.2	114980	1290.7
	Unknown	5	0.2	.	.
Deaths	Female	346	41.0	118823	291.19
	Male	495	58.6	114980	430.51
	Unknown	3	0.4	.	.

Note1: Population data source for calculating rate estimates: U.S. Census Bureau, ACS 5-year estimate.

Note2: Rates for categories with fewer than 12 cases are suppressed due to high relative standard error.

Note3: Hospitalizations are regardless of deceased status; Deaths are regardless of hospitalization status

**Investigations are ongoing; data are subject to change.  
Reporting through 11APR2022**

**North Las Vegas zip codes include 89030, 89031, 89032, 89033, 89036, 89081, 89084, 89085, 89086, 89087.**