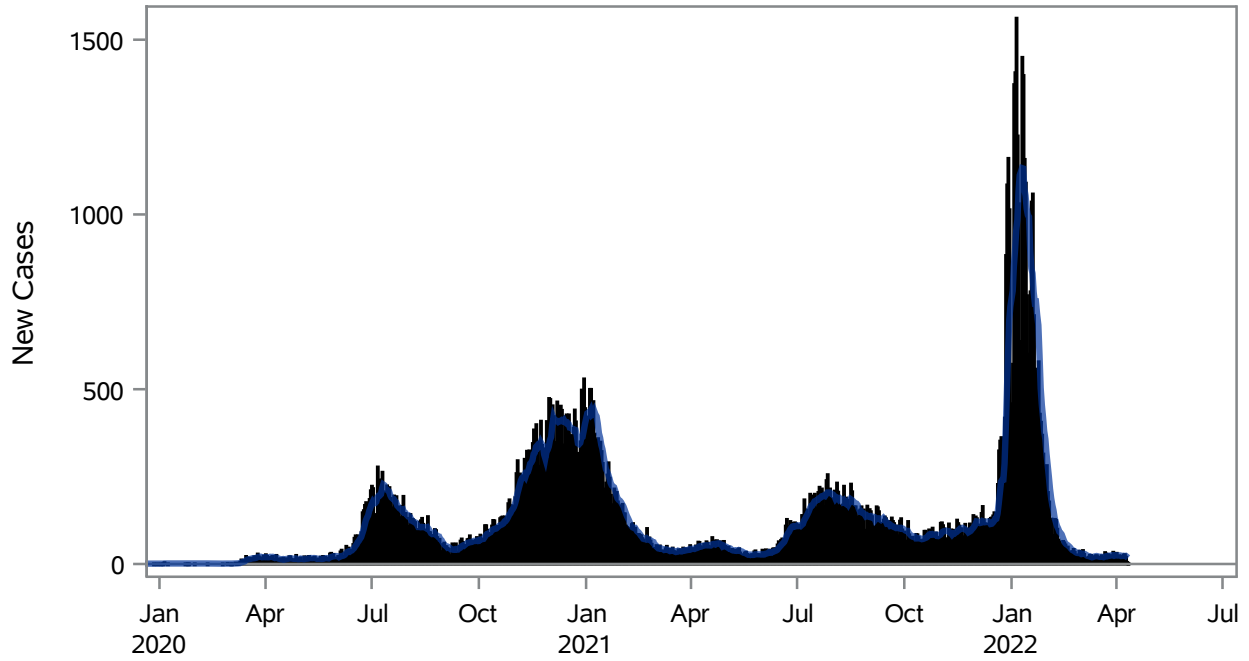


COVID19 Cases for Henderson, 7-Day Moving Average



■ New Cases — 7-Day Moving Average

Investigations are ongoing; data are subject to change.

Reporting through 11APR2022

Henderson zip codes include 89002, 89011, 89012, 89014, 89015, 89044, 89052, 89074, 89119, 89120, 89122, 89123, 89124, 89183.

Table 1: New COVID19 Cases and 7-Day Moving Average in Henderson, Previous Two Weeks

Date (Daily)	New Cases	7-Day Moving Average
29MAR2022	34	25.00
30MAR2022	18	23.43
31MAR2022	23	24.43
01APR2022	31	25.00
02APR2022	18	24.14
03APR2022	24	24.57
04APR2022	22	24.29
05APR2022	23	22.71
06APR2022	20	23.00
07APR2022	26	23.43
08APR2022	27	22.86
09APR2022	20	23.14

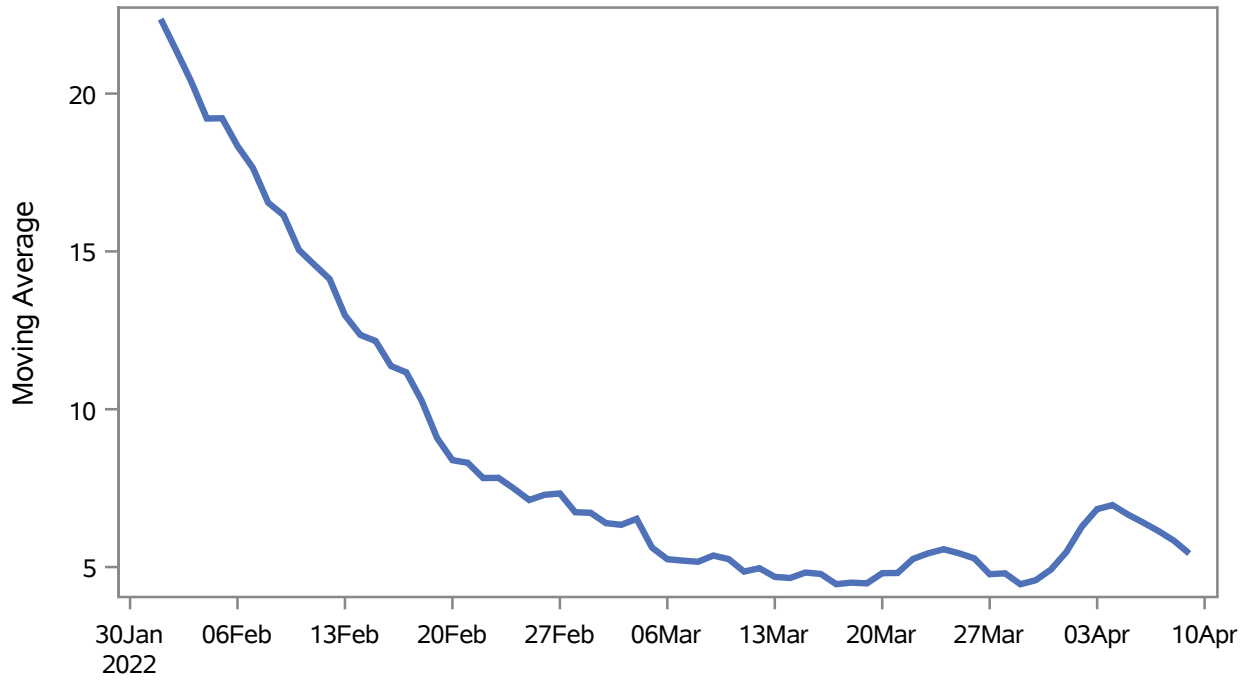
Note1: Event Date is calculated as follows based on completed information:
1) Disease onset date 2) Disease diagnosis date 3) Lab result collection date 4) Report date to SNHD.

Investigations are ongoing; data are subject to change.

Reporting through 11APR2022

Henderson zip codes include 89002, 89011, 89012, 89014, 89015, 89044, 89052, 89074, 89119, 89120, 89122, 89123, 89124, 89183.

Percent of People Receiving COVID-19 Viral Tests Who Have Positive Results in Henderson



Investigations are ongoing; data are subject to change.

Reporting through 11APR2022

Henderson zip codes include 89002, 89011, 89012, 89014, 89015, 89044, 89052, 89074, 89119, 89120, 89122, 89123, 89124, 89183.

Table 2: Percent of People Receiving COVID-19 Viral Tests Who Have Positive Results in Henderson

Collection Date	Positive	Negative	Equivocal	Total	% Positivity	7-Day Moving Average
26MAR2022	10	226		236	4.24	5.27
27MAR2022	8	240	1	249	3.21	4.77
28MAR2022	21	462	1	488	4.30	4.80
29MAR2022	29	470	1	503	5.77	4.45
30MAR2022	26	427	2	455	5.71	4.58
31MAR2022	29	406		435	6.67	4.92
01APR2022	35	378	1	414	8.45	5.48
02APR2022	23	210	1	234	9.83	6.28
03APR2022	15	196		211	7.11	6.83
04APR2022	23	416	3	442	5.20	6.96
05APR2022	15	392	1	408	3.68	6.66
06APR2022	18	439	1	458	3.93	6.41
07APR2022	21	419		440	4.77	6.14
08APR2022	27	399	1	427	6.32	5.83
09APR2022	22	293		315	6.98	5.43

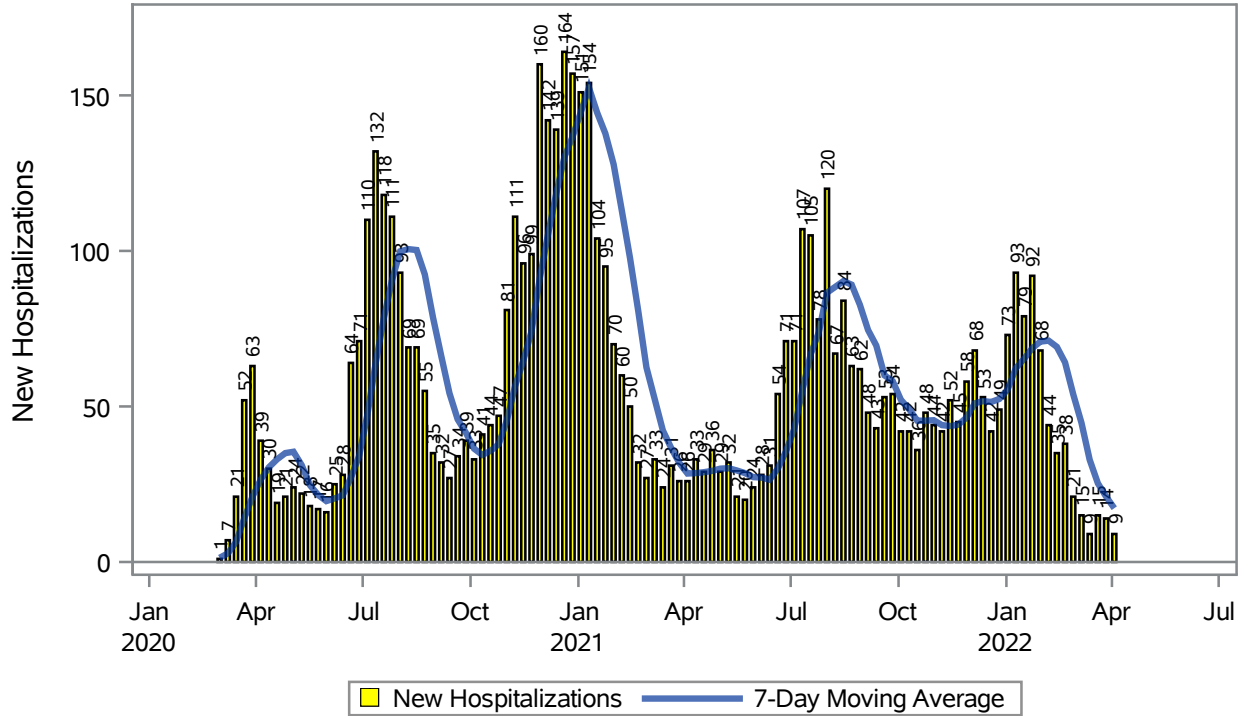
Note: Testing Data includes a 3 day delay

Investigations are ongoing; data are subject to change.

Reporting through 11APR2022

Henderson zip codes include 89002, 89011, 89012, 89014, 89015, 89044, 89052, 89074, 89119, 89120, 89122, 89123, 89124, 89183.

COVID19 Hospitalizations for Henderson, 7-Day Moving Average



Investigations are ongoing; data are subject to change.

Reporting through 11APR2022

Henderson zip codes include 89002, 89011, 89012, 89014, 89015, 89044, 89052, 89074, 89119, 89120, 89122, 89123, 89124, 89183.

Table 3: New COVID19-Related Hospitalizations and 7-Day Moving Average in Henderson, previous month

Week	Hospitalizations	7-Day Moving Average
13MAR2022	9	32.9
20MAR2022	15	25.3
27MAR2022	14	21.0
03APR2022	9	17.3

Note1: Admission Date is calculated as follows based on completed information:
A) COVID19 Case is hospitalized B) COVID19 Case has a hospital admission date.

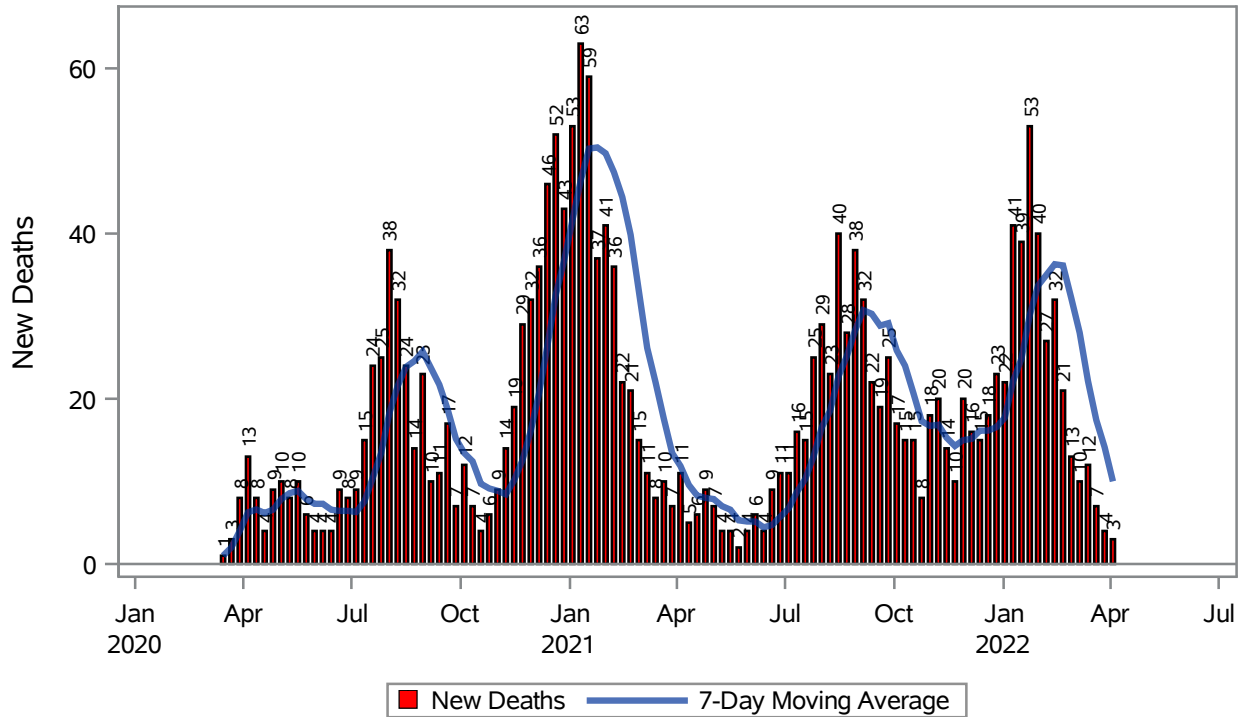
If admission date is missing, then the following is substituted temporarily, in order:
1) Disease onset date 2) Disease diagnosis date 3) Lab result collection date 4) Report date to SNHD.

Investigations are ongoing; data are subject to change.

Reporting through 11APR2022

Henderson zip codes include 89002, 89011, 89012, 89014, 89015, 89044, 89052, 89074, 89119, 89120, 89122, 89123, 89124, 89183.

COVID19 Deaths for Henderson, 7-Day Moving Average



Investigations are ongoing; data are subject to change.

Reporting through 11APR2022

Henderson zip codes include 89002, 89011, 89012, 89014, 89015, 89044, 89052, 89074, 89119, 89120, 89122, 89123, 89124, 89183.

Table 4: New COVID19-Related Deaths and 7-Day Moving Average in Henderson, Previous Month

Week	Deaths	7-Day Moving Average
13MAR2022	12	22.1
20MAR2022	7	17.4
27MAR2022	4	14.1
03APR2022	3	10.0

Note1: Date of Death is calculated as follows based on completed information:
A) COVID19 Case is reported as deceased B) COVID19 Case has a reported date of death.

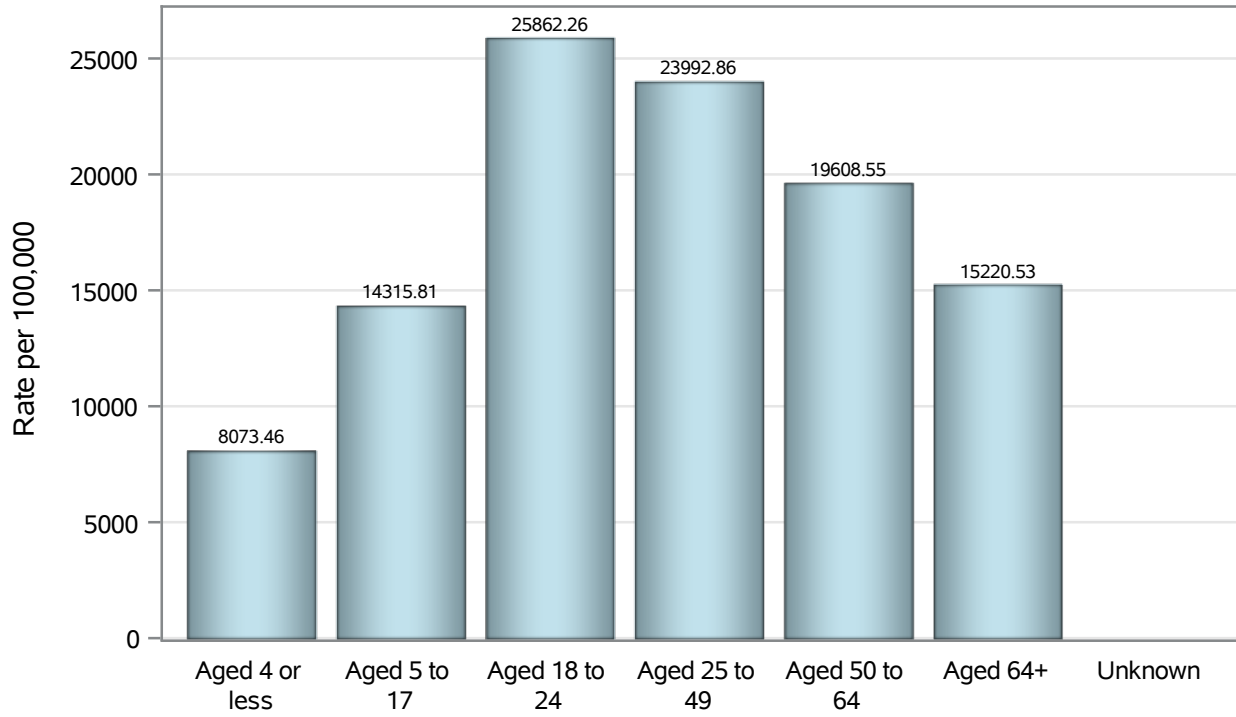
If date of death is missing, then the following is substituted temporarily, in order:
1) Disease onset date 2) Disease diagnosis date
3) Lab result collection date 4) Report date to SNHD.

Investigations are ongoing; data are subject to change.

Reporting through 11APR2022

Henderson zip codes include 89002, 89011, 89012, 89014, 89015, 89044, 89052, 89074, 89119, 89120, 89122, 89123, 89124, 89183.

Case Age Rates in Henderson

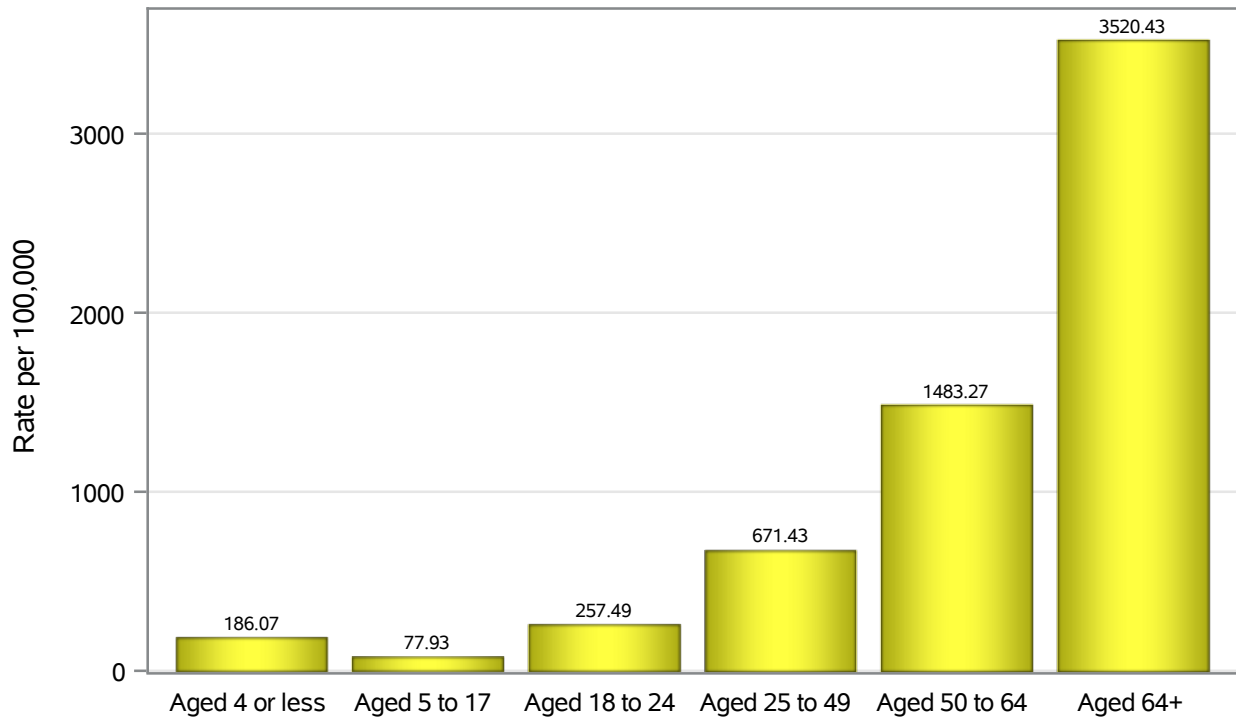


Investigations are ongoing; data are subject to change.

Reporting through 11APR2022

Henderson zip codes include 89002, 89011, 89012, 89014, 89015, 89044, 89052, 89074, 89119, 89120, 89122, 89123, 89124, 89183.

Hospitalization Age Rates in Henderson

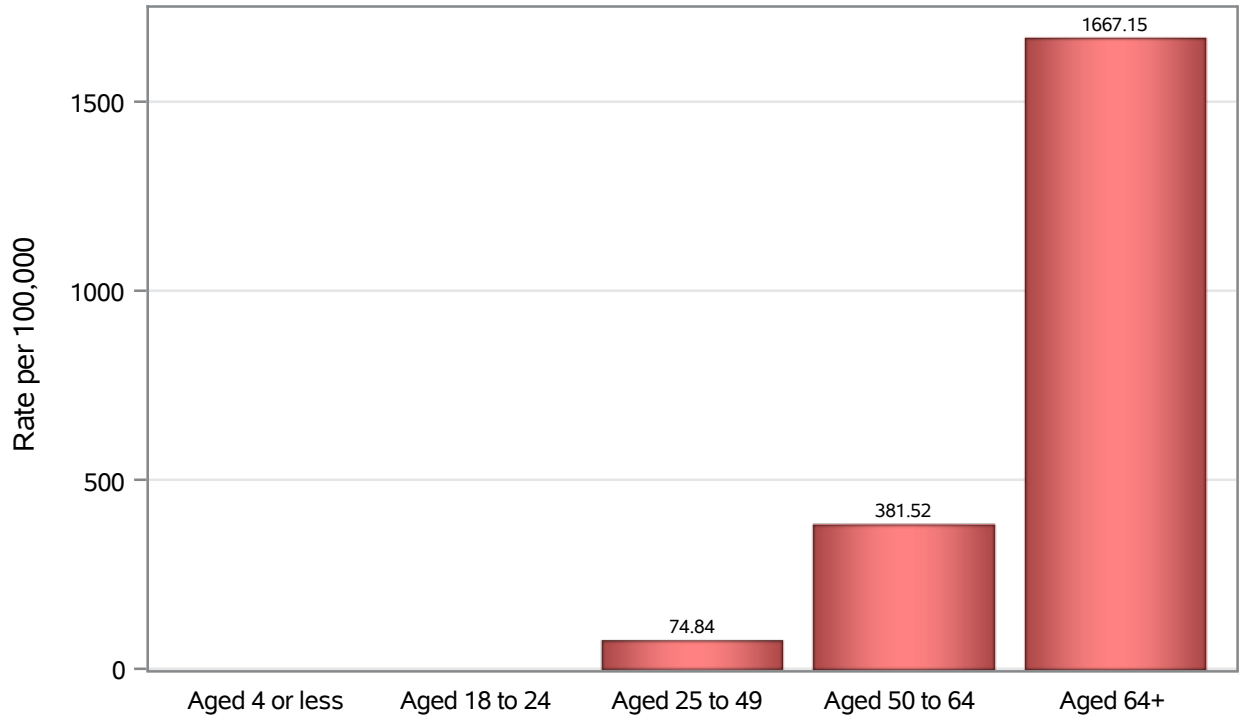


Investigations are ongoing; data are subject to change.

Reporting through 11APR2022

Henderson zip codes include 89002, 89011, 89012, 89014, 89015, 89044, 89052, 89074, 89119, 89120, 89122, 89123, 89124, 89183.

Death Age Rates in Henderson



Investigations are ongoing; data are subject to change.

Reporting through 11APR2022

Henderson zip codes include 89002, 89011, 89012, 89014, 89015, 89044, 89052, 89074, 89119, 89120, 89122, 89123, 89124, 89183.

Table 5: Age and COVID19 in Henderson

Case Status	Age Categories	N	%	Population	Rate per 100,000
Cases	Aged 4 or less	2343	2.3	29,021	8073.5
	Aged 5 to 17	11757	11.3	82,126	14316
	Aged 18 to 24	11450	11.0	44,273	25862
	Aged 25 to 49	44882	43.3	187064	23993
	Aged 50 to 64	20147	19.4	102746	19609
	Aged 64+	13165	12.7	86,495	15221
	Unknown	18	0.0	.	.
Hospitalizations	Aged 4 or less	54	0.9	29,021	186.07
	Aged 5 to 17	64	1.1	82,126	77.93
	Aged 18 to 24	114	1.9	44,273	257.49
	Aged 25 to 49	1256	20.7	187064	671.43
	Aged 50 to 64	1524	25.2	102746	1483.3
	Aged 64+	3045	50.3	86,495	3520.4
	Deaths	Aged 4 or less	2	0.1	29,021
Aged 18 to 24		3	0.2	44,273	.
Aged 25 to 49		140	7.1	187064	74.84
Aged 50 to 64		392	19.8	102746	381.52
Aged 64+		1442	72.9	86,495	1667.1

Note1: Population data source for calculating rate estimates: U.S. Census Bureau, ACS 5-year estimate.

Note2: Rates for categories with fewer than 12 cases are suppressed due to high relative standard error.

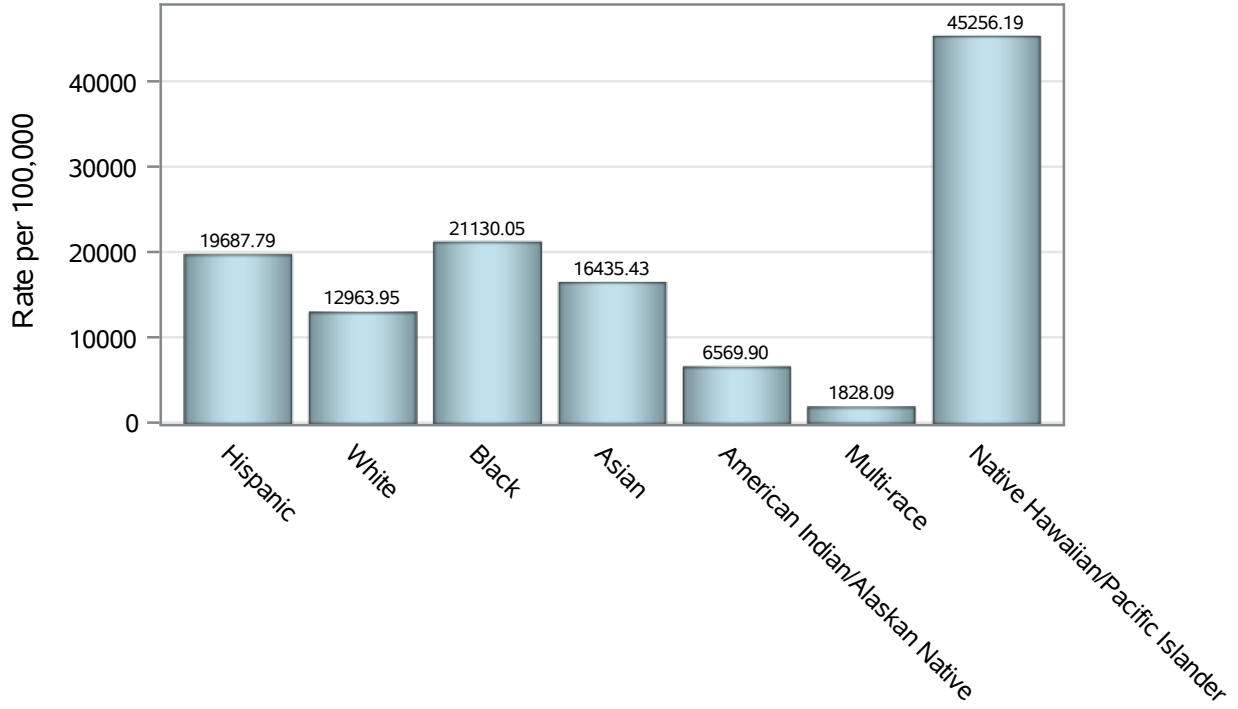
Note3: Hospitalizations are regardless of deceased status; Deaths are regardless of hospitalization status

Investigations are ongoing; data are subject to change.

Reporting through 11APR2022

Henderson zip codes include 89002, 89011, 89012, 89014, 89015, 89044, 89052, 89074, 89119, 89120, 89122, 89123, 89124, 89183.

Case Race/Ethnicity Rates in Henderson

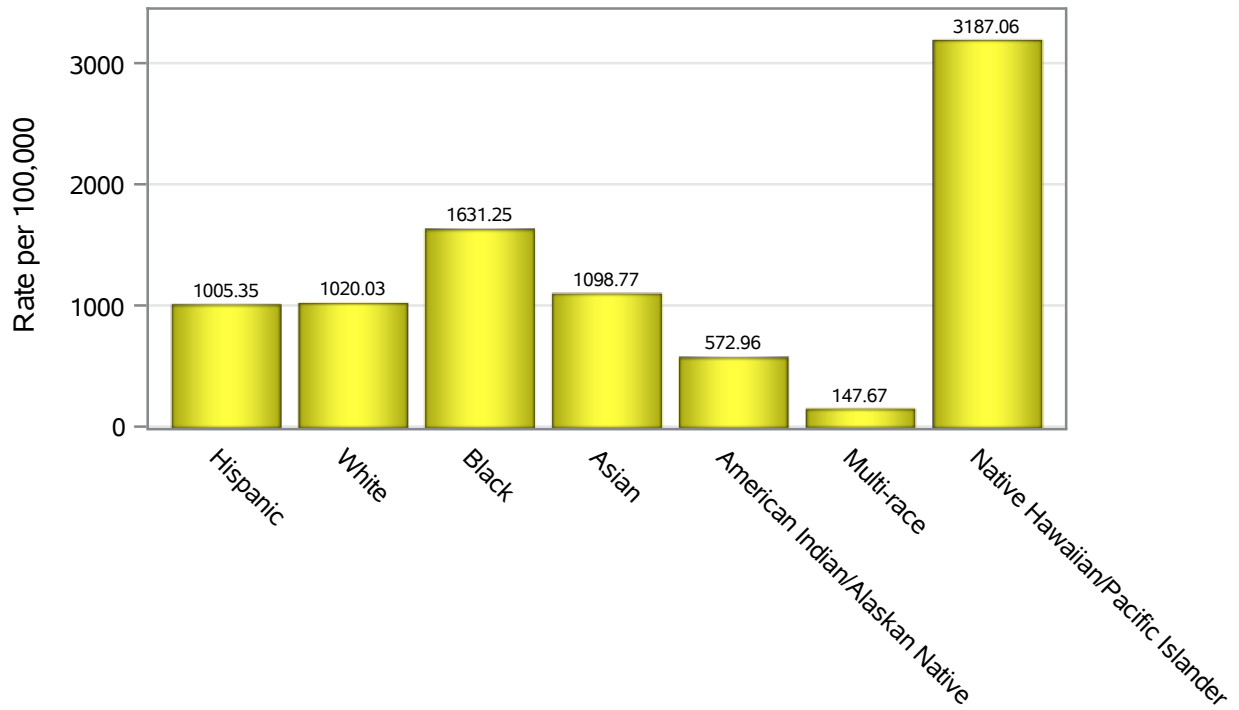


Investigations are ongoing; data are subject to change.

Reporting through 11APR2022

Henderson zip codes include 89002, 89011, 89012, 89014, 89015, 89044, 89052, 89074, 89119, 89120, 89122, 89123, 89124, 89183.

Hospitalization Race/Ethnicity Rates in Henderson

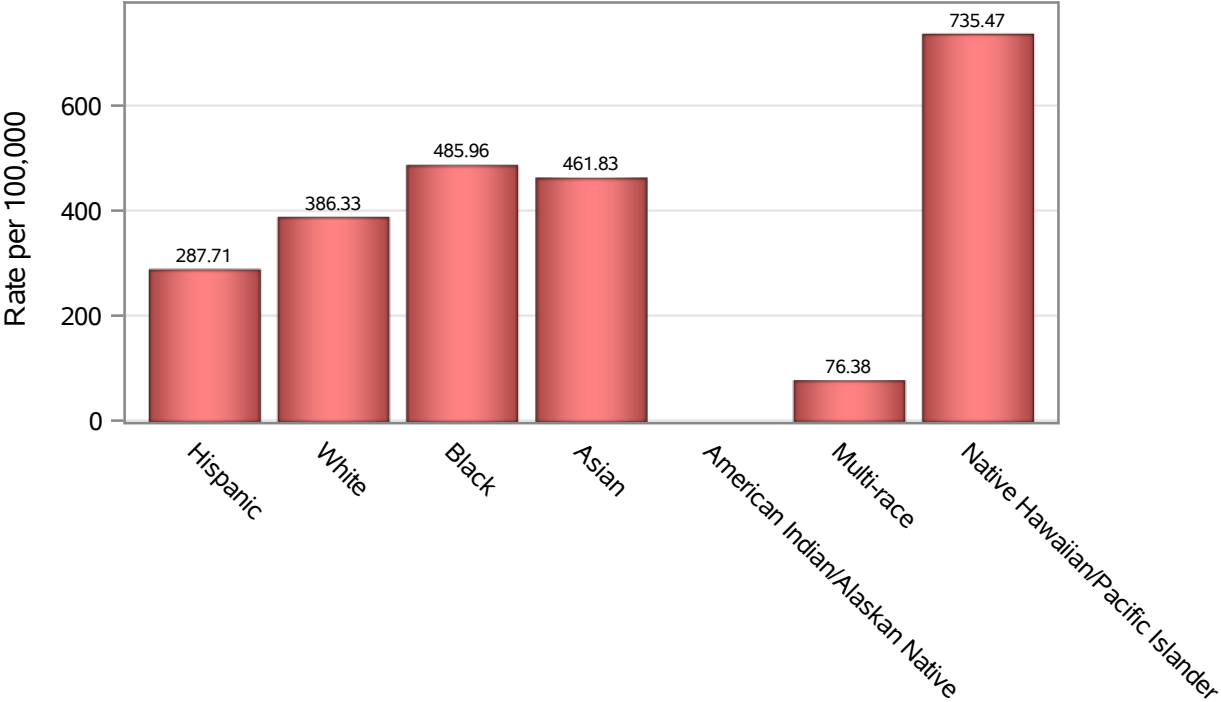


Investigations are ongoing; data are subject to change.

Reporting through 11APR2022

Henderson zip codes include 89002, 89011, 89012, 89014, 89015, 89044, 89052, 89074, 89119, 89120, 89122, 89123, 89124, 89183.

Death Race/Ethnicity Rates in Henderson



Investigations are ongoing; data are subject to change.

Reporting through 11APR2022

Henderson zip codes include 89002, 89011, 89012, 89014, 89015, 89044, 89052, 89074, 89119, 89120, 89122, 89123, 89124, 89183.

Table 6: Race/Ethnicity and COVID19 in Henderson

Case Status	Race Ethnicity Categories	N	%	Population	Rate per 100,000
Cases	Hispanic	23950	23.1	121649	19688
	White	37785	36.4	291462	12964
	Black	8044	7.8	38,069	21130
	Asian	8541	8.2	51,967	16435
	American Indian/Alaskan Native	172	0.2	2,618	6569.9
	Multi-race	359	0.3	19,638	1828.1
	Native Hawaiian/Pacific Islander	1846	1.8	4,079	45256
	Unknown	23065	22.2	.	.
Hospitalizations	Hispanic	1223	20.2	121649	1005.4
	White	2973	49.1	291462	1020.0
	Black	621	10.3	38,069	1631.2
	Asian	571	9.4	51,967	1098.8
	American Indian/Alaskan Native	15	0.2	2,618	572.96
	Multi-race	29	0.5	19,638	147.67
	Native Hawaiian/Pacific Islander	130	2.1	4,079	3187.1
	Unknown	495	8.2	.	.
Deaths	Hispanic	350	17.7	121649	287.71
	White	1126	56.9	291462	386.33
	Black	185	9.3	38,069	485.96
	Asian	240	12.1	51,967	461.83
	American Indian/Alaskan Native	8	0.4	2,618	.
	Multi-race	15	0.8	19,638	76.38
	Native Hawaiian/Pacific Islander	30	1.5	4,079	735.47
	Unknown	25	1.3	.	.

Note1: Population data source for calculating rate estimates: U.S. Census Bureau, ACS 5-year estimate.

Note2: Rates for categories with fewer than 12 cases are suppressed due to high relative standard error.

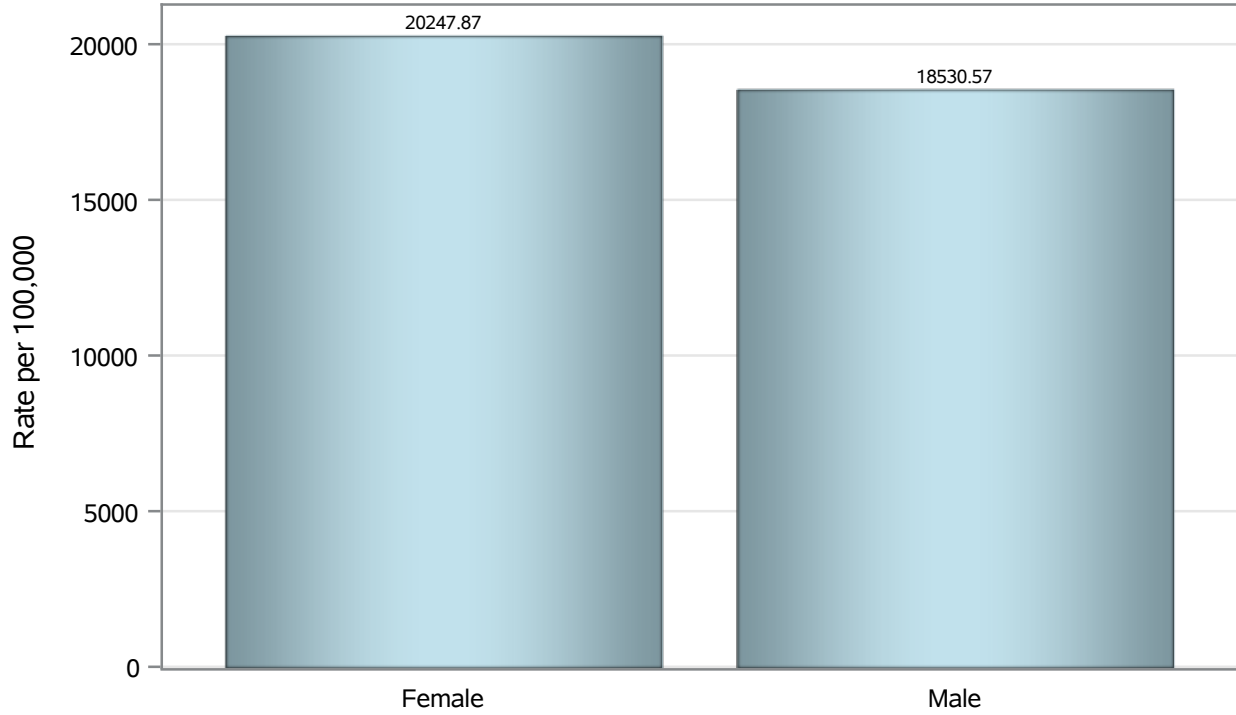
Note3: Hospitalizations are regardless of deceased status; Deaths are regardless of hospitalization status

Investigations are ongoing; data are subject to change.

Reporting through 11APR2022

Henderson zip codes include 89002, 89011, 89012, 89014, 89015, 89044, 89052, 89074, 89119, 89120, 89122, 89123, 89124, 89183.

Case Birth Sex Rates in Henderson

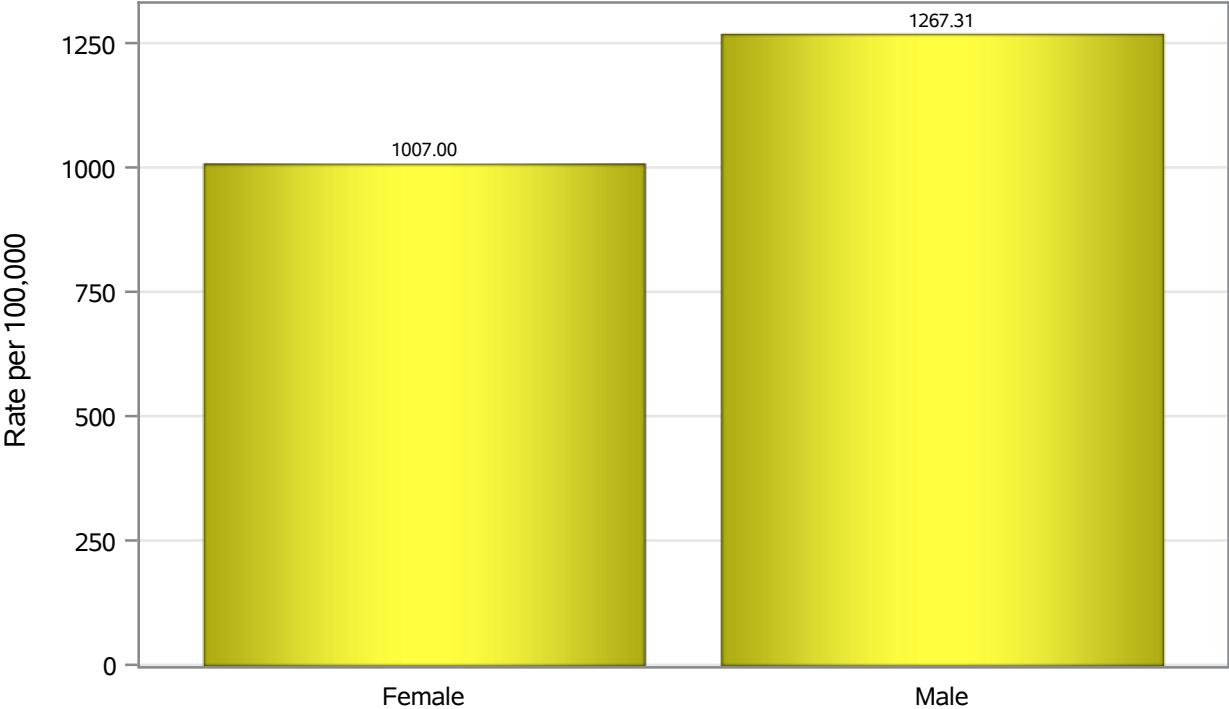


Investigations are ongoing; data are subject to change.

Reporting through 11APR2022

Henderson zip codes include 89002, 89011, 89012, 89014, 89015, 89044, 89052, 89074, 89119, 89120, 89122, 89123, 89124, 89183.

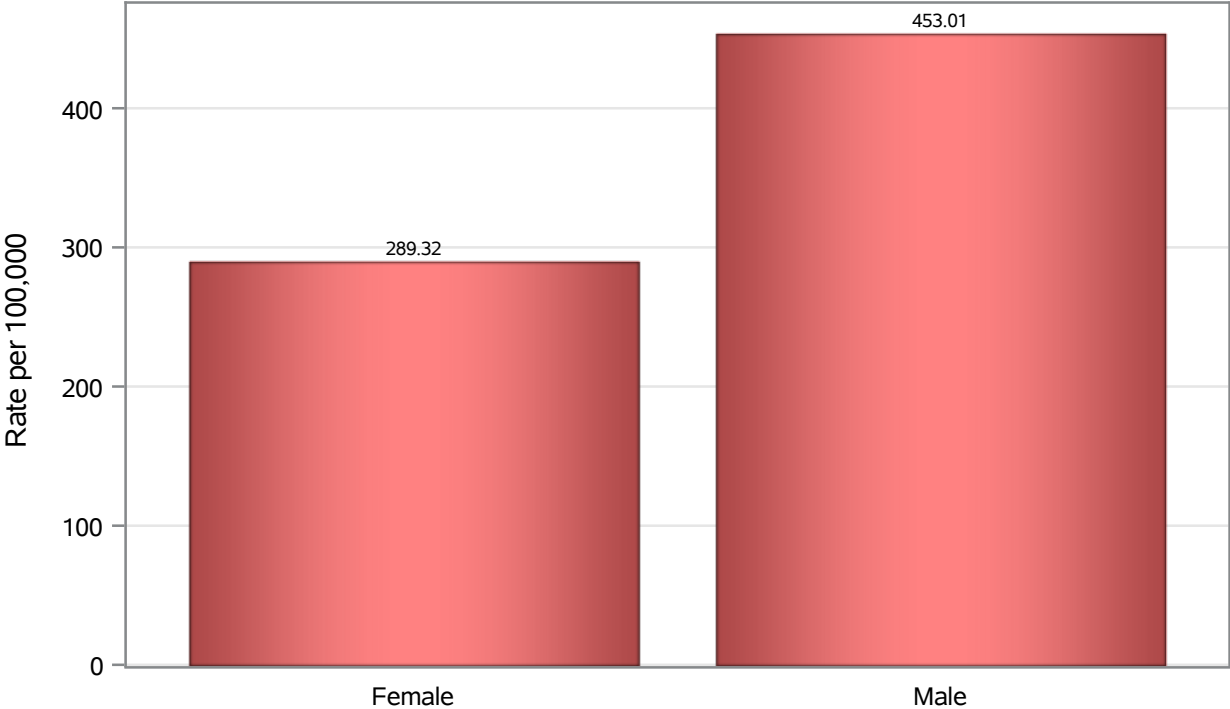
Hospitalization Birth Sex Rates in Henderson



Investigations are ongoing; data are subject to change.
Reporting through 11APR2022

Henderson zip codes include 89002, 89011, 89012, 89014, 89015, 89044, 89052, 89074,
89119, 89120, 89122, 89123, 89124, 89183.

Death Birth Sex Rates in Henderson



Investigations are ongoing; data are subject to change.
Reporting through 11APR2022

Henderson zip codes include 89002, 89011, 89012, 89014, 89015, 89044, 89052, 89074, 89119, 89120, 89122, 89123, 89124, 89183.

Table 7: Birth Sex and COVID19 in Henderson

Case Status	Birth Sex Categories	N	%	Population	Rate per 100,000
Cases	Female	54028	52.1	266833	20248
	Male	49086	47.3	264892	18531
	Unknown	648	0.6	.	.
Hospitalizations	Female	2687	44.4	266833	1007.0
	Male	3357	55.4	264892	1267.3
	Unknown	13	0.2	.	.
Deaths	Female	772	39.0	266833	289.32
	Male	1200	60.6	264892	453.01
	Unknown	7	0.4	.	.

Note1: Population data source for calculating rate estimates: U.S. Census Bureau, ACS 5-year estimate.

Note2: Rates for categories with fewer than 12 cases are suppressed due to high relative standard error.

Note3: Hospitalizations are regardless of deceased status; Deaths are regardless of hospitalization status

Investigations are ongoing; data are subject to change.

Reporting through 11APR2022

Henderson zip codes include 89002, 89011, 89012, 89014, 89015, 89044, 89052, 89074, 89119, 89120, 89122, 89123, 89124, 89183.