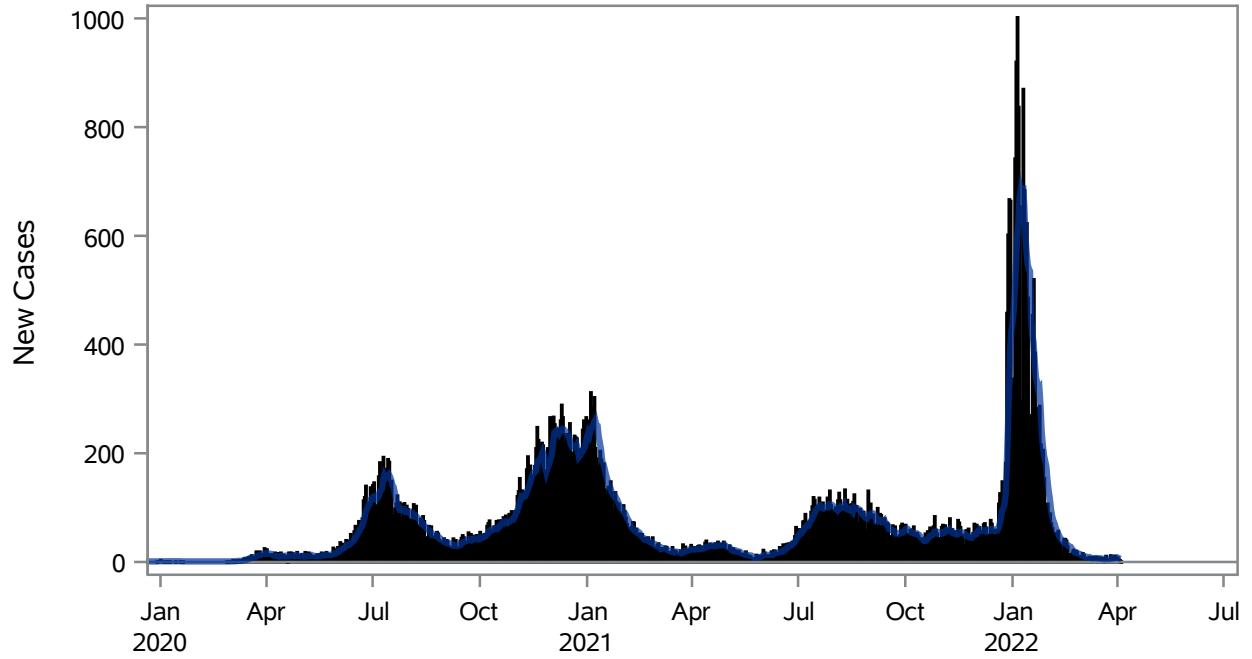


COVID19 Cases for North Las Vegas, 7-Day Moving Average



■ New Cases — 7-Day Moving Average

Investigations are ongoing; data are subject to change.

Reporting through 04APR2022

North Las Vegas zip codes include 89030, 89031, 89032, 89033, 89036, 89081, 89084, 89085, 89086, 89087.

Table 1: New COVID19 Cases and 7-Day Moving Average in North Las Vegas, Previous Two Weeks

Date (Daily)	New Cases	7-Day Moving Average
22MAR2022	11	6.29
23MAR2022	3	5.86
24MAR2022	3	5.14
25MAR2022	5	5.43
26MAR2022	12	6.14
27MAR2022	10	7.29
28MAR2022	3	6.71
29MAR2022	11	6.71
30MAR2022	11	7.86
31MAR2022	3	7.86
01APR2022	8	8.29
02APR2022	4	7.14

Note1: Event Date is calculated as follows based on completed information:

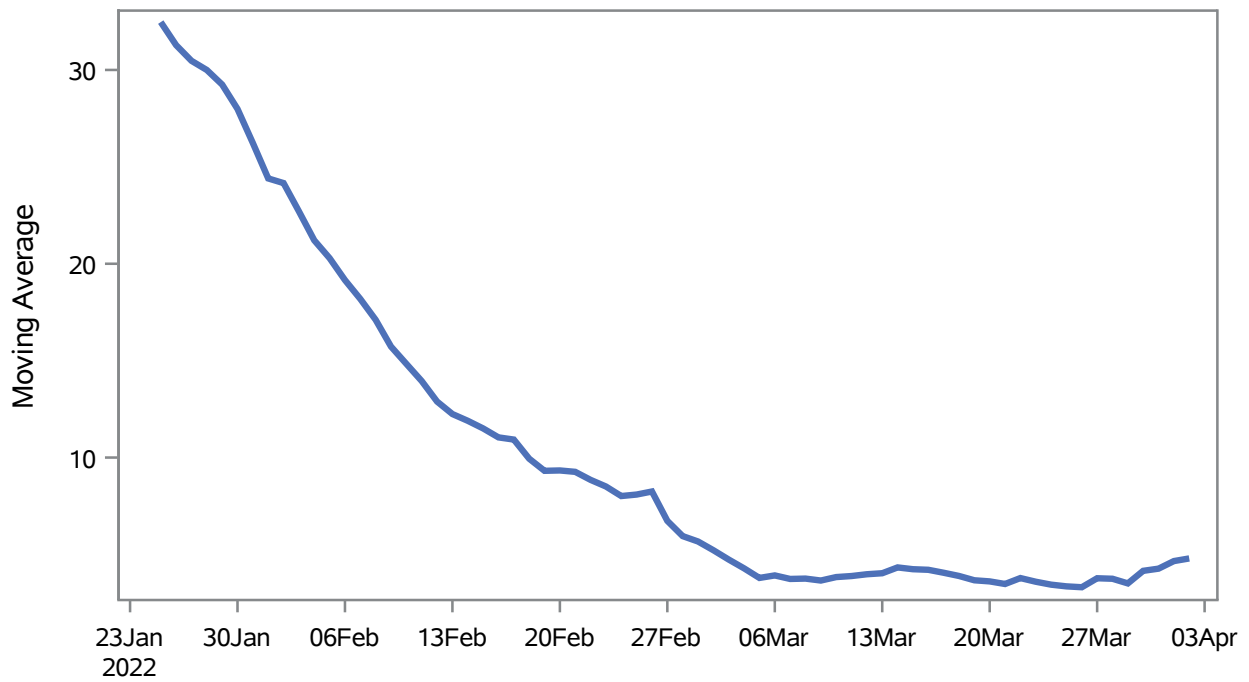
1) Disease onset date 2) Disease diagnosis date 3) Lab result collection date 4) Report date to SNHD.

Investigations are ongoing; data are subject to change.

Reporting through 04APR2022

North Las Vegas zip codes include 89030, 89031, 89032, 89033, 89036, 89081, 89084, 89085, 89086, 89087.

Percent of People Receiving COVID-19 Viral Tests Who Have Positive Results in North Las Vegas



Investigations are ongoing; data are subject to change.

Reporting through 04APR2022

North Las Vegas zip codes include 89030, 89031, 89032, 89033, 89036, 89081, 89084, 89085, 89086, 89087.

Table 2: Percent of People Receiving COVID-19 Viral Tests Who Have Positive Results in North Las Vegas

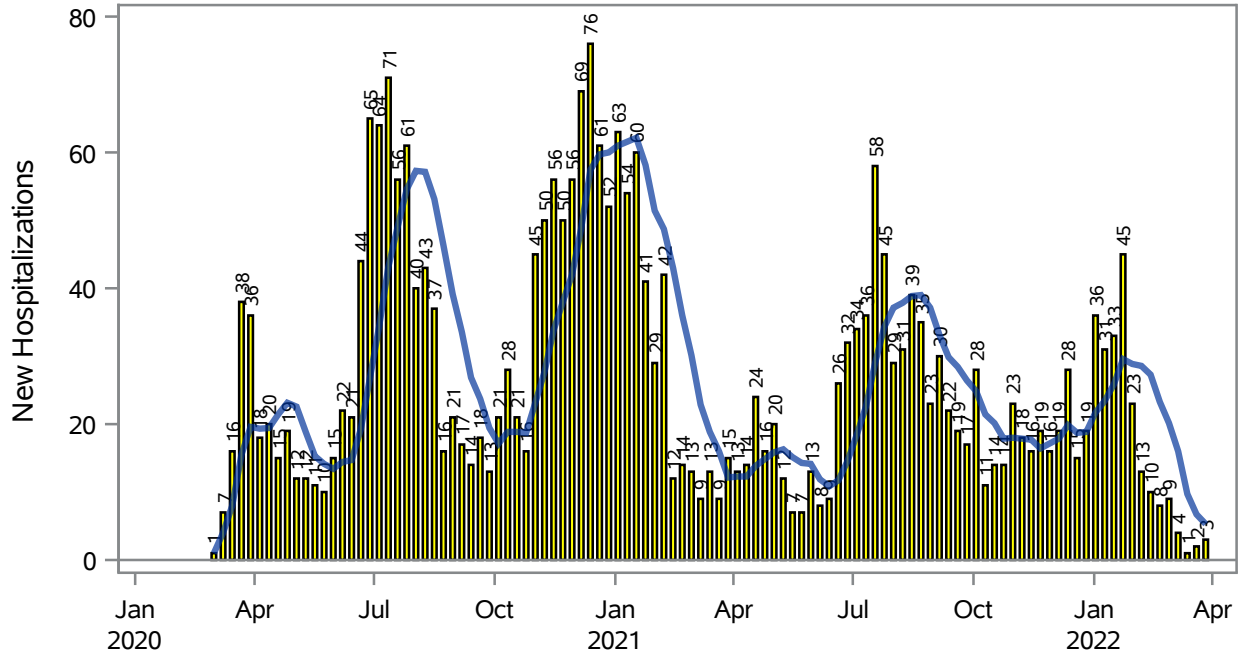
Collection Date	Positive	Negative	Equivocal	Total	% Positivity	7-Day Moving Average
19MAR2022	5	121		126	3.97	3.67
20MAR2022	5	125		130	3.85	3.61
21MAR2022	15	330	1	357	4.20	3.48
22MAR2022	21	387		408	5.15	3.78
23MAR2022	3	226		229	1.31	3.59
24MAR2022	4	231		235	1.70	3.44
25MAR2022	7	204	1	212	3.30	3.35
26MAR2022	5	132		137	3.65	3.31
27MAR2022	9	118		127	7.09	3.77
28MAR2022	14	334		348	4.02	3.75
29MAR2022	10	277		288	3.47	3.51
30MAR2022	18	289		308	5.84	4.15
31MAR2022	7	274		281	2.49	4.27
01APR2022	16	249		265	6.04	4.66
02APR2022	7	145		152	4.61	4.79

Note: Testing Data includes a 3 day delay

**Investigations are ongoing; data are subject to change.
Reporting through 04APR2022**

North Las Vegas zip codes include 89030, 89031, 89032, 89033, 89036, 89081, 89084, 89085, 89086, 89087.

COVID19 Hospitalizations for North Las Vegas, 7-Day Moving Average



■ New Hospitalizations — 7-Day Moving Average

Investigations are ongoing; data are subject to change.

Reporting through 04APR2022

North Las Vegas zip codes include 89030, 89031, 89032, 89033, 89036, 89081, 89084, 89085, 89086, 89087.

Table 3: New COVID19-Related Hospitalizations and 7-Day Moving Average in North Las Vegas, previous month

Week	Hospitalizations	7-Day Moving Average
06MAR2022	4	16.0
13MAR2022	1	9.71
20MAR2022	2	6.71
27MAR2022	3	5.29

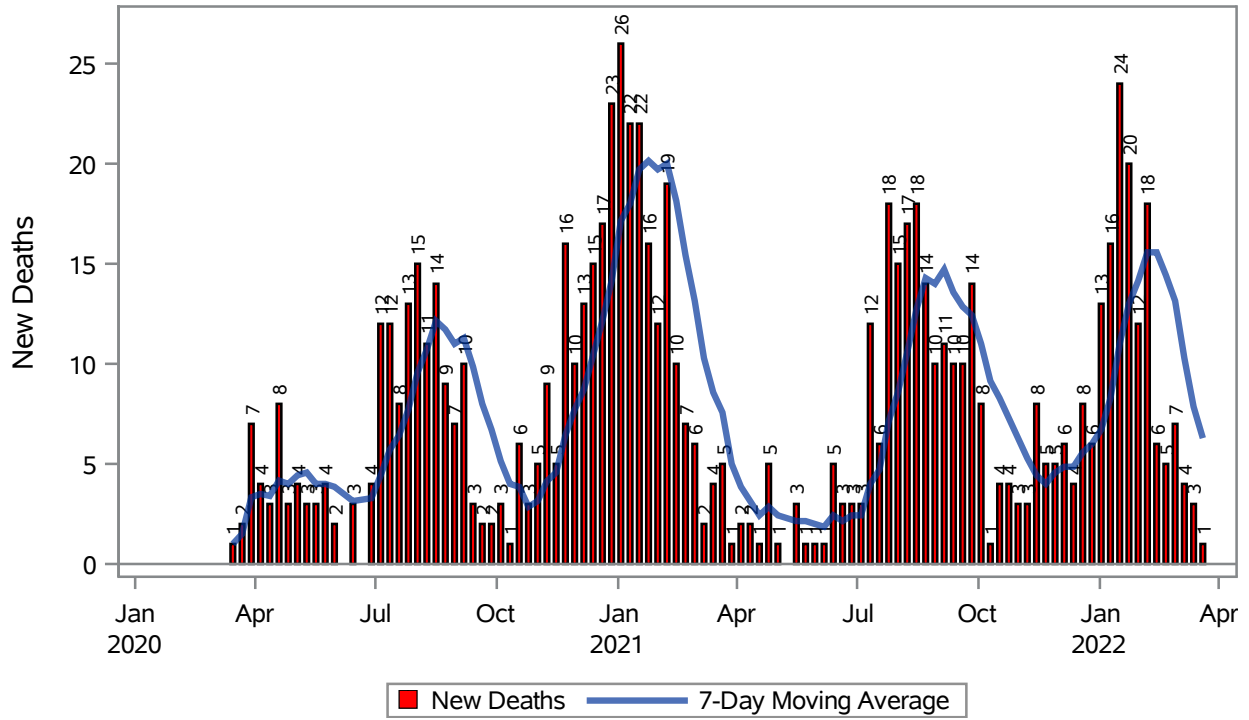
Note1: Admission Date is calculated as follows based on completed information:
A) COVID19 Case is hospitalized B) COVID19 Case has a hospital admission date.

If admission date is missing, then the following is substituted temporarily, in order:
1) Disease onset date 2) Disease diagnosis date 3) Lab result collection date 4) Report date to SNHD.

**Investigations are ongoing; data are subject to change.
Reporting through 04APR2022**

North Las Vegas zip codes include 89030, 89031, 89032, 89033, 89036, 89081, 89084, 89085, 89086, 89087.

COVID19 Deaths for North Las Vegas, 7-Day Moving Average



Investigations are ongoing; data are subject to change.

Reporting through 04APR2022

North Las Vegas zip codes include 89030, 89031, 89032, 89033, 89036, 89081, 89084, 89085, 89086, 89087.

Table 4: New COVID19-Related Deaths and 7-Day Moving Average in North Las Vegas, Previous Month

Week	Deaths	7-Day Moving Average
06MAR2022	4	10.3
13MAR2022	3	7.86
20MAR2022	1	6.29

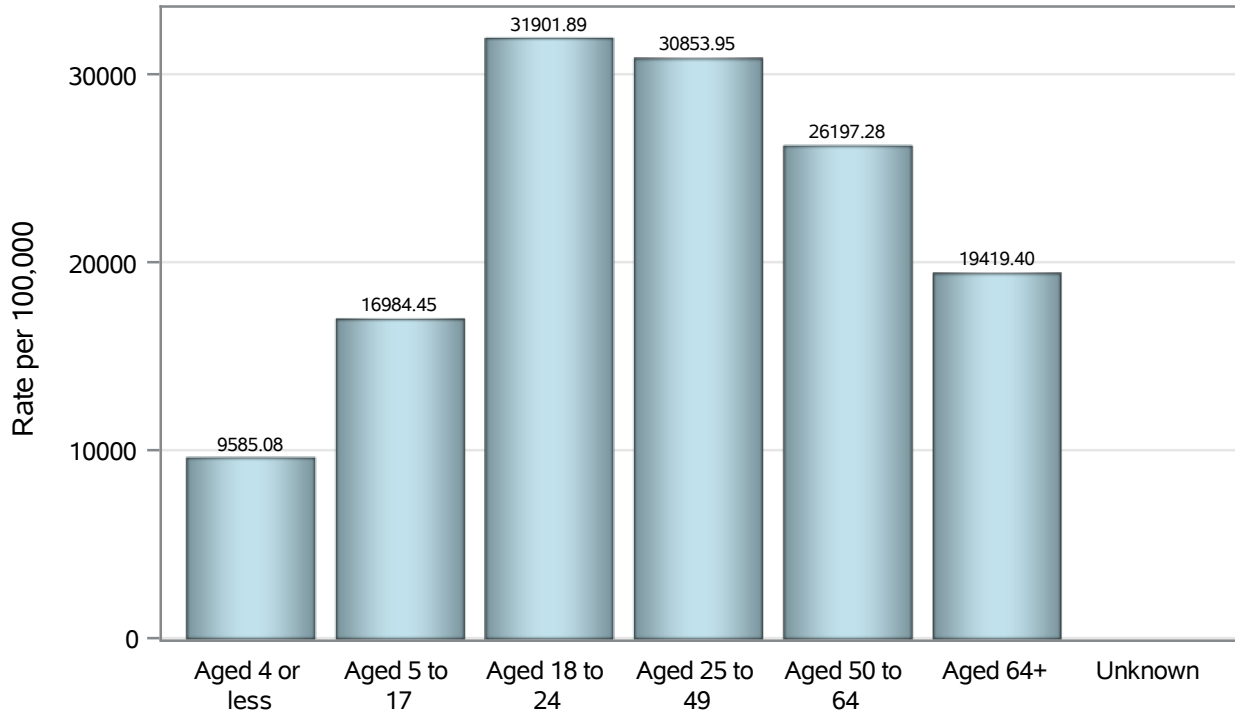
Note1: Date of Death is calculated as follows based on completed information:
A) COVID19 Case is reported as deceased B) COVID19 Case has a reported date of death.

If date of death is missing, then the following is substituted temporarily, in order:
1) Disease onset date 2) Disease diagnosis date
3) Lab result collection date 4) Report date to SNHD.

**Investigations are ongoing; data are subject to change.
Reporting through 04APR2022**

North Las Vegas zip codes include 89030, 89031, 89032, 89033, 89036, 89081, 89084, 89085, 89086, 89087.

Case Age Rates in North Las Vegas

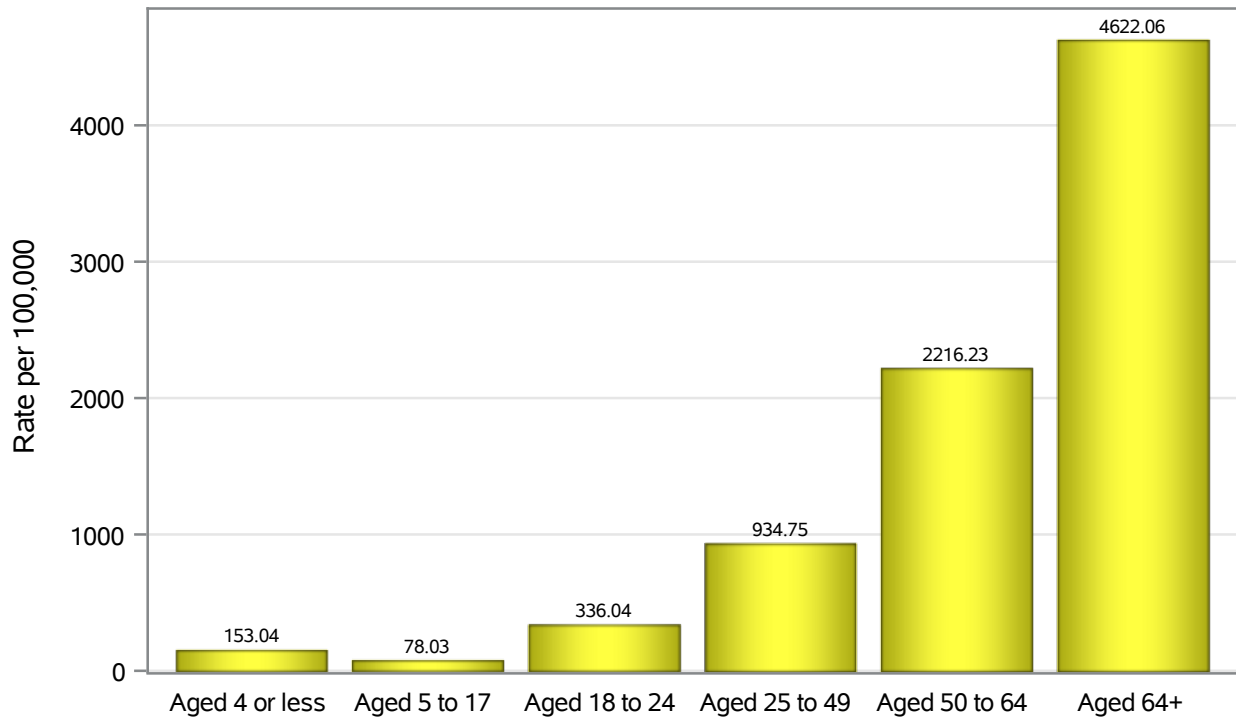


Investigations are ongoing; data are subject to change.

Reporting through 04APR2022

North Las Vegas zip codes include 89030, 89031, 89032, 89033, 89036, 89081, 89084, 89085, 89086, 89087.

Hospitalization Age Rates in North Las Vegas

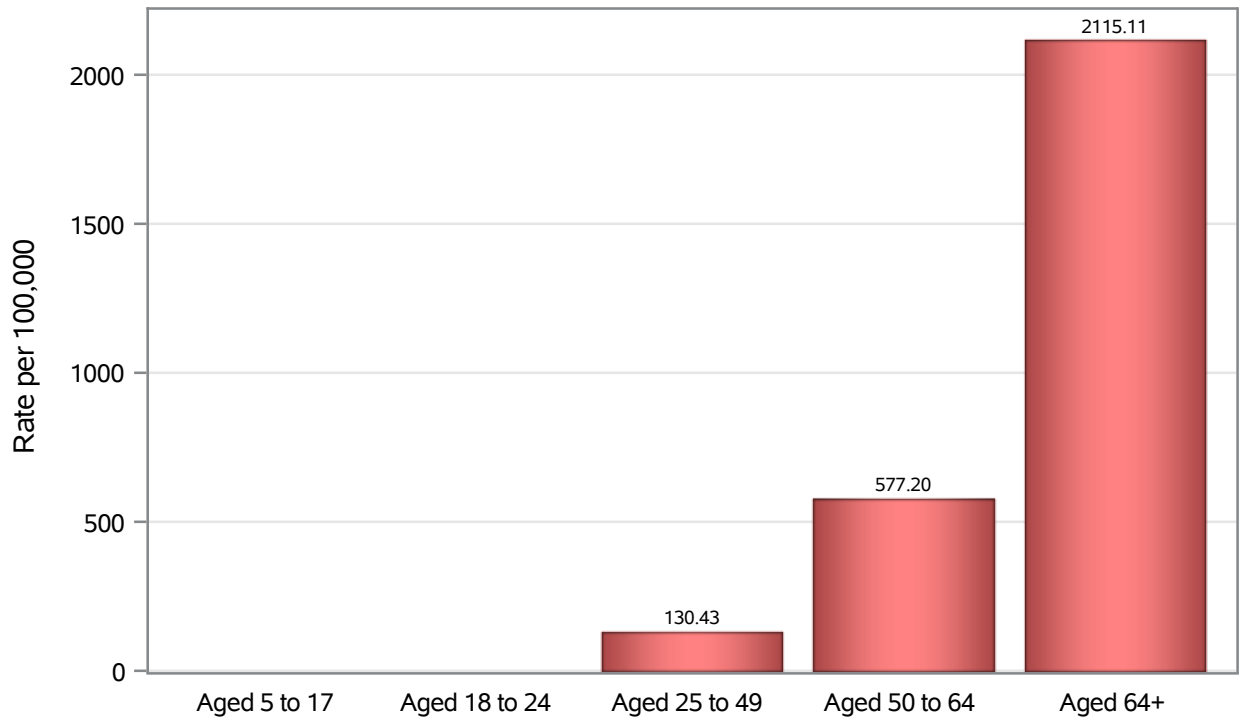


Investigations are ongoing; data are subject to change.

Reporting through 04APR2022

North Las Vegas zip codes include 89030, 89031, 89032, 89033, 89036, 89081, 89084, 89085, 89086, 89087.

Death Age Rates in North Las Vegas



Investigations are ongoing; data are subject to change.

Reporting through 04APR2022

North Las Vegas zip codes include 89030, 89031, 89032, 89033, 89036, 89081, 89084, 89085, 89086, 89087.

Table 5: Age and COVID19 in North Las Vegas

Case Status	Age Categories	N	%	Population	Rate per 100,000
Cases	Aged 4 or less	1691	3.0	17,642	9585.1
	Aged 5 to 17	8489	14.8	49,981	16984
	Aged 18 to 24	7310	12.8	22,914	31902
	Aged 25 to 49	25548	44.6	82,803	30854
	Aged 50 to 64	9622	16.8	36,729	26197
	Aged 64+	4609	8.0	23,734	19419
	Unknown	8	0.0	.	.
Hospitalizations	Aged 4 or less	27	1.0	17,642	153.04
	Aged 5 to 17	39	1.4	49,981	78.03
	Aged 18 to 24	77	2.7	22,914	336.04
	Aged 25 to 49	774	27.4	82,803	934.75
	Aged 50 to 64	814	28.8	36,729	2216.2
	Aged 64+	1097	38.8	23,734	4622.1
	Deaths	Aged 5 to 17	1	0.1	49,981
Aged 18 to 24		2	0.2	22,914	.
Aged 25 to 49		108	13.1	82,803	130.43
Aged 50 to 64		212	25.7	36,729	577.20
Aged 64+		502	60.8	23,734	2115.1

Note1: Population data source for calculating rate estimates: U.S. Census Bureau, ACS 5-year estimate.

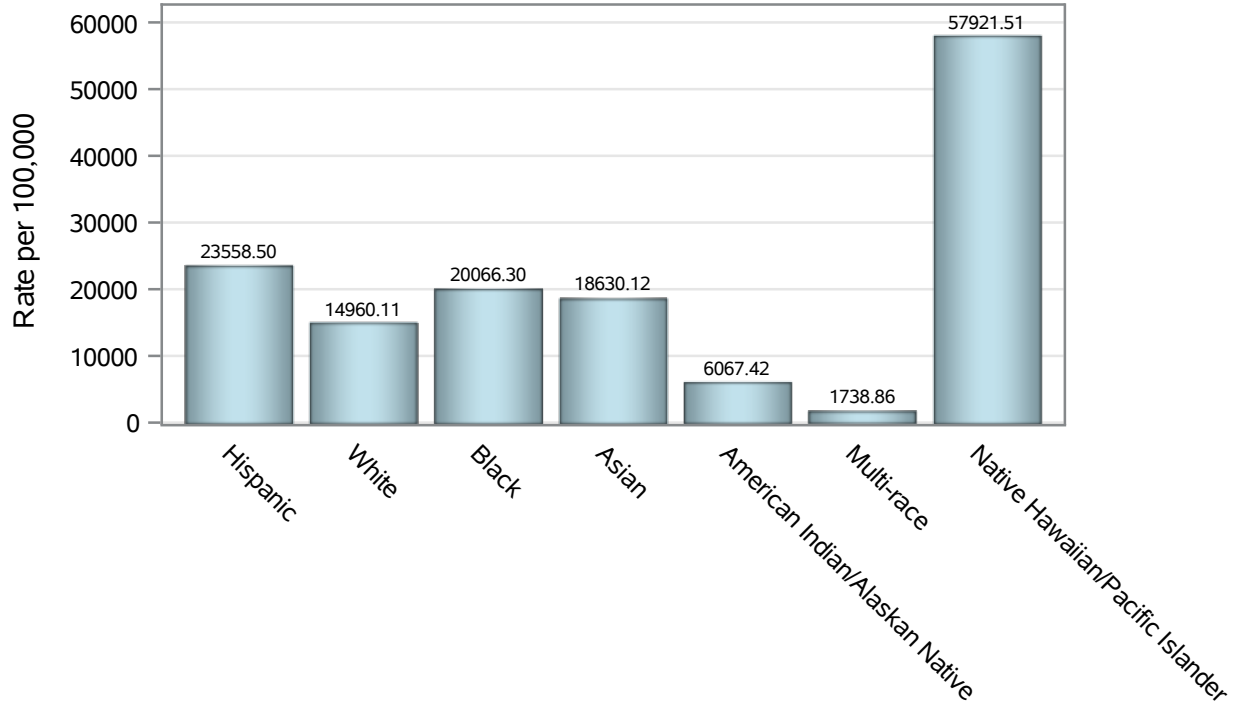
Note2: Rates for categories with fewer than 12 cases are suppressed due to high relative standard error.

Note3: Hospitalizations are regardless of deceased status; Deaths are regardless of hospitalization status

**Investigations are ongoing; data are subject to change.
Reporting through 04APR2022**

North Las Vegas zip codes include 89030, 89031, 89032, 89033, 89036, 89081, 89084, 89085, 89086, 89087.

Case Race/Ethnicity Rates in North Las Vegas

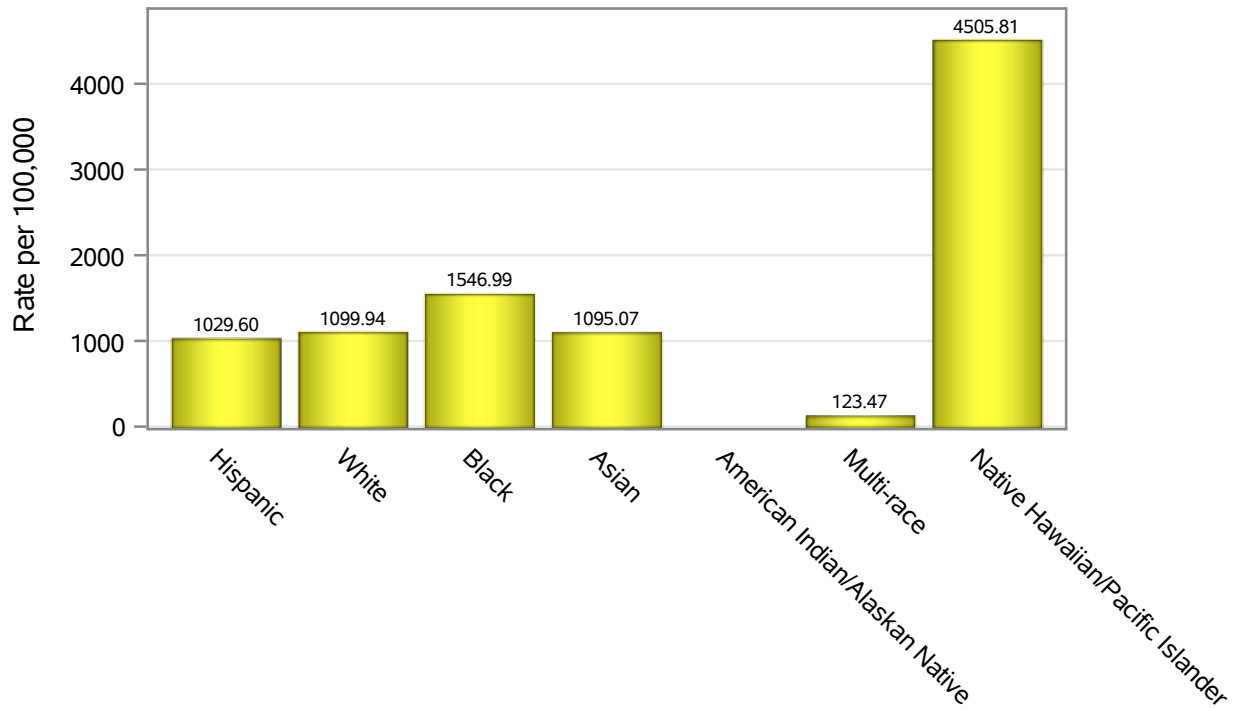


Investigations are ongoing; data are subject to change.

Reporting through 04APR2022

North Las Vegas zip codes include 89030, 89031, 89032, 89033, 89036, 89081, 89084, 89085, 89086, 89087.

Hospitalization Race/Ethnicity Rates in North Las Vegas

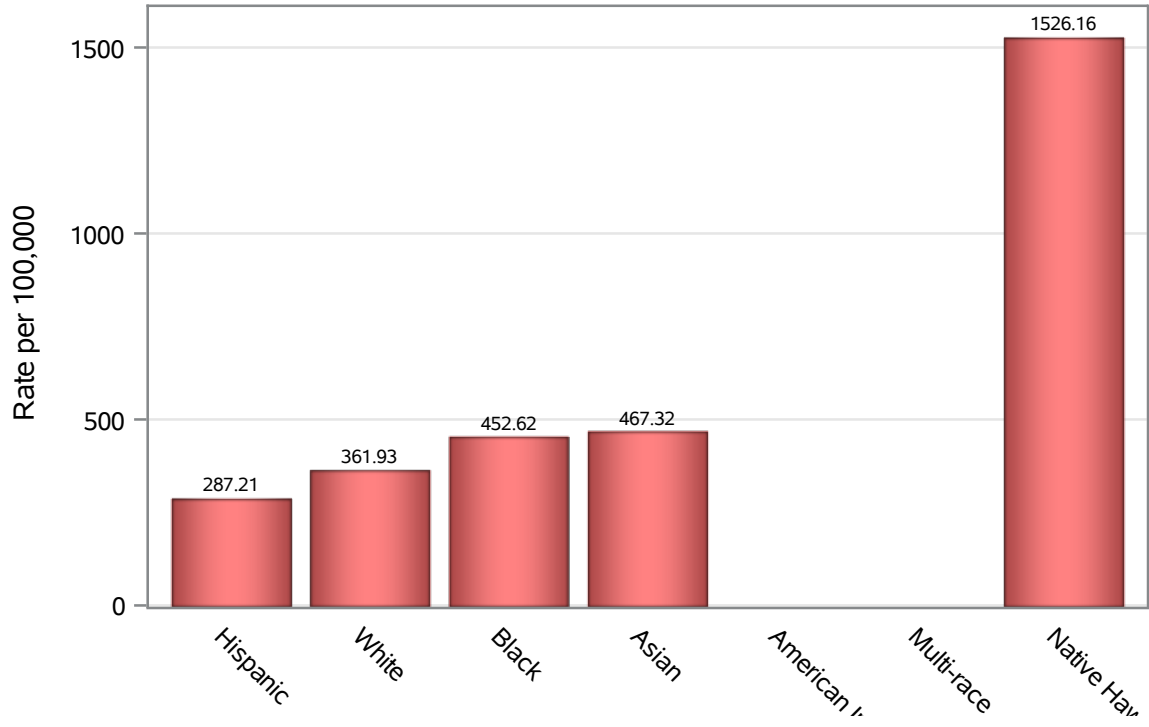


Investigations are ongoing; data are subject to change.

Reporting through 04APR2022

North Las Vegas zip codes include 89030, 89031, 89032, 89033, 89036, 89081, 89084, 89085, 89086, 89087.

Death Race/Ethnicity Rates in North Las Vegas



Investigations are ongoing; data are subject to change.

Reporting through 04APR2022

North Las Vegas zip codes include 89030, 89031, 89032, 89033, 89036, 89081, 89084, 89085, 89086, 89087.

Table 6: Race/Ethnicity and COVID19 in North Las Vegas

Case Status	Race Ethnicity Categories	N	%	Population	Rate per 100,000
Cases	Hispanic	22721	39.7	96,445	23559
	White	9507	16.6	63,549	14960
	Black	9443	16.5	47,059	20066
	Asian	2671	4.7	14,337	18630
	American Indian/Alaskan Native	54	0.1	890	6067.4
	Multi-race	169	0.3	9,719	1738.9
	Native Hawaiian/Pacific Islander	797	1.4	1,376	57922
	Unknown	11915	20.8	.	.
Hospitalizations	Hispanic	993	35.1	96,445	1029.6
	White	699	24.7	63,549	1099.9
	Black	728	25.7	47,059	1547.0
	Asian	157	5.6	14,337	1095.1
	American Indian/Alaskan Native	11	0.4	890	.
	Multi-race	12	0.4	9,719	123.47
	Native Hawaiian/Pacific Islander	62	2.2	1,376	4505.8
	Unknown	166	5.9	.	.
Deaths	Hispanic	277	33.6	96,445	287.21
	White	230	27.9	63,549	361.93
	Black	213	25.8	47,059	452.62
	Asian	67	8.1	14,337	467.32
	American Indian/Alaskan Native	6	0.7	890	.
	Multi-race	6	0.7	9,719	.
	Native Hawaiian/Pacific Islander	21	2.5	1,376	1526.2
	Unknown	5	0.6	.	.

Note1: Population data source for calculating rate estimates: U.S. Census Bureau, ACS 5-year estimate.

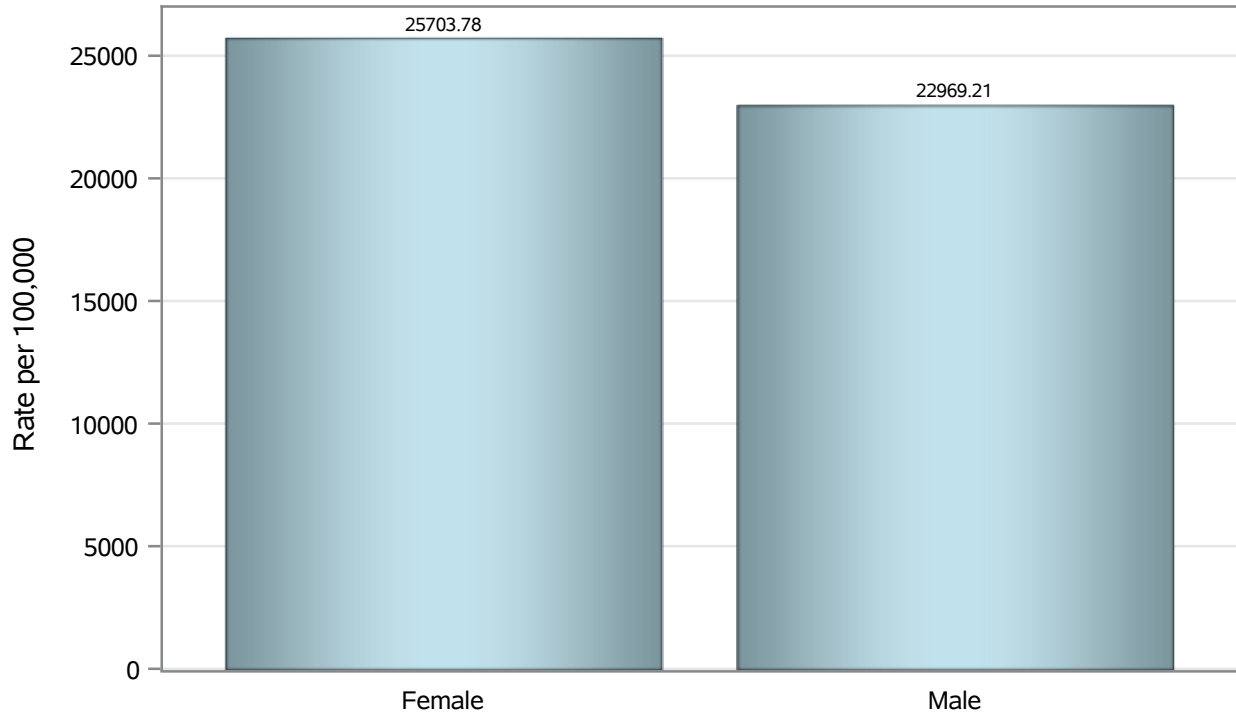
Note2: Rates for categories with fewer than 12 cases are suppressed due to high relative standard error.

Note3: Hospitalizations are regardless of deceased status; Deaths are regardless of hospitalization status

**Investigations are ongoing; data are subject to change.
Reporting through 04APR2022**

North Las Vegas zip codes include 89030, 89031, 89032, 89033, 89036, 89081, 89084, 89085, 89086, 89087.

Case Birth Sex Rates in North Las Vegas

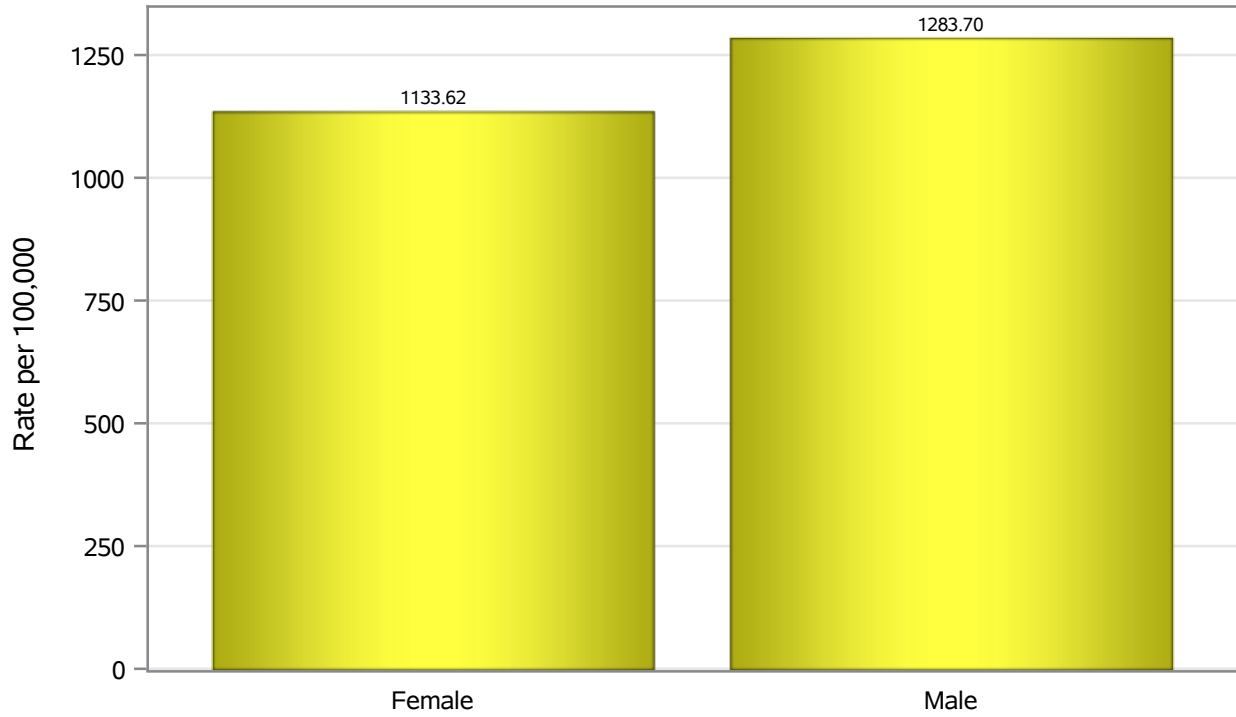


Investigations are ongoing; data are subject to change.

Reporting through 04APR2022

North Las Vegas zip codes include 89030, 89031, 89032, 89033, 89036, 89081, 89084, 89085, 89086, 89087.

Hospitalization Birth Sex Rates in North Las Vegas

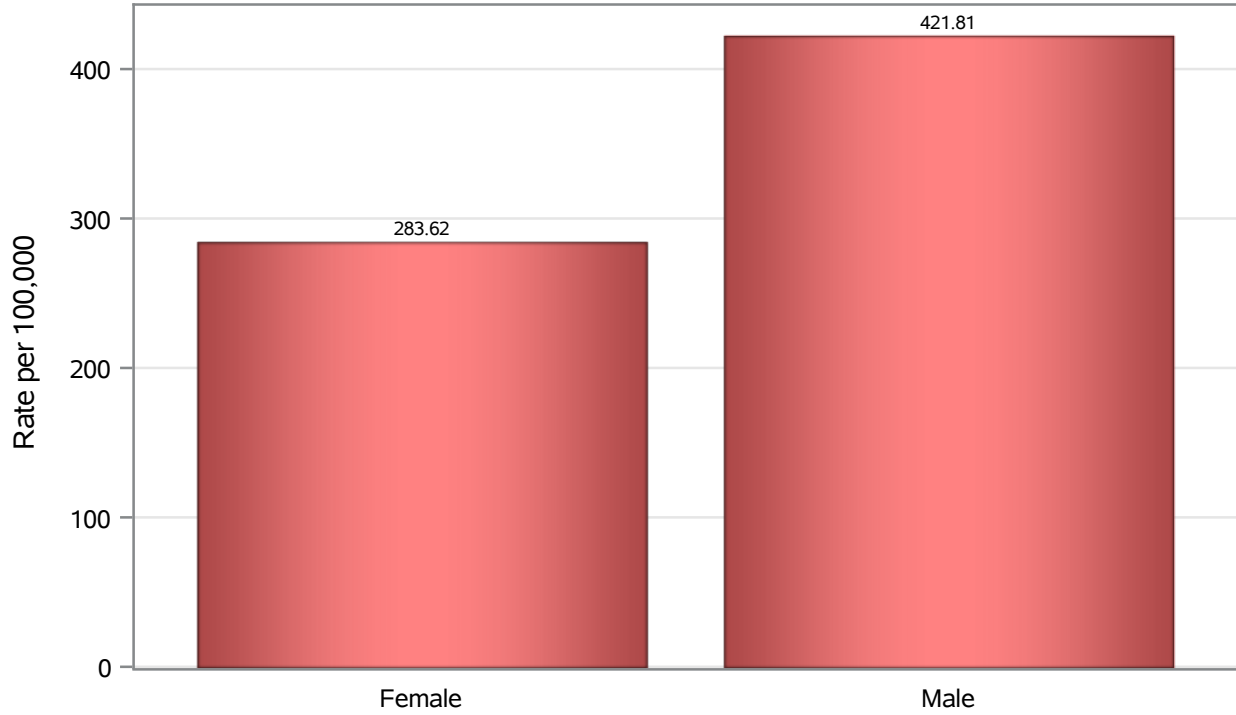


Investigations are ongoing; data are subject to change.

Reporting through 04APR2022

North Las Vegas zip codes include 89030, 89031, 89032, 89033, 89036, 89081, 89084, 89085, 89086, 89087.

Death Birth Sex Rates in North Las Vegas



Investigations are ongoing; data are subject to change.

Reporting through 04APR2022

North Las Vegas zip codes include 89030, 89031, 89032, 89033, 89036, 89081, 89084, 89085, 89086, 89087.

Table 7: Birth Sex and COVID19 in North Las Vegas

Case Status	Birth Sex Categories	N	%	Population	Rate per 100,000
Cases	Female	30542	53.3	118823	25704
	Male	26410	46.1	114980	22969
	Unknown	325	0.6	.	.
Hospitalizations	Female	1347	47.6	118823	1133.6
	Male	1476	52.2	114980	1283.7
	Unknown	5	0.2	.	.
Deaths	Female	337	40.8	118823	283.62
	Male	485	58.8	114980	421.81
	Unknown	3	0.4	.	.

Note1: Population data source for calculating rate estimates: U.S. Census Bureau, ACS 5-year estimate.

Note2: Rates for categories with fewer than 12 cases are suppressed due to high relative standard error.

Note3: Hospitalizations are regardless of deceased status; Deaths are regardless of hospitalization status

**Investigations are ongoing; data are subject to change.
Reporting through 04APR2022**

North Las Vegas zip codes include 89030, 89031, 89032, 89033, 89036, 89081, 89084, 89085, 89086, 89087.