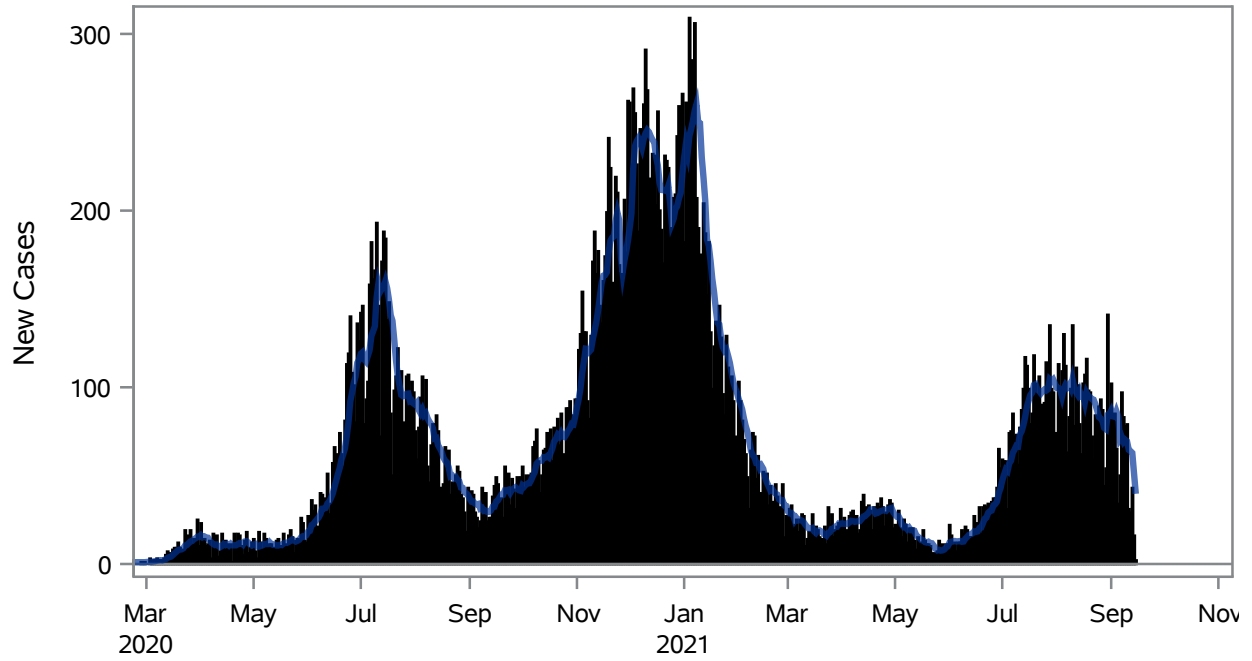


### COVID19 Cases for North Las Vegas, 7-Day Moving Average



■ New Cases    — 7-Day Moving Average

Investigations are ongoing; data are subject to change.

Reporting through 15SEP2021

North Las Vegas zip codes include 89030, 89031, 89032, 89033, 89036, 89081, 89084, 89085, 89086, 89087.

**Table 1: New COVID19 Cases and 7-Day Moving Average in North Las Vegas, Previous Two Weeks**

Date (Daily)	New Cases	7-Day Moving Average
02SEP2021	70	83.57
03SEP2021	85	83.29
04SEP2021	65	86.29
05SEP2021	34	83.43
06SEP2021	50	70.43
07SEP2021	97	71.86
08SEP2021	83	69.14
09SEP2021	78	70.29
10SEP2021	79	69.43
11SEP2021	31	64.57
12SEP2021	29	63.86
13SEP2021	43	62.86

---

Note1: Event Date is calculated as follows based on completed information:

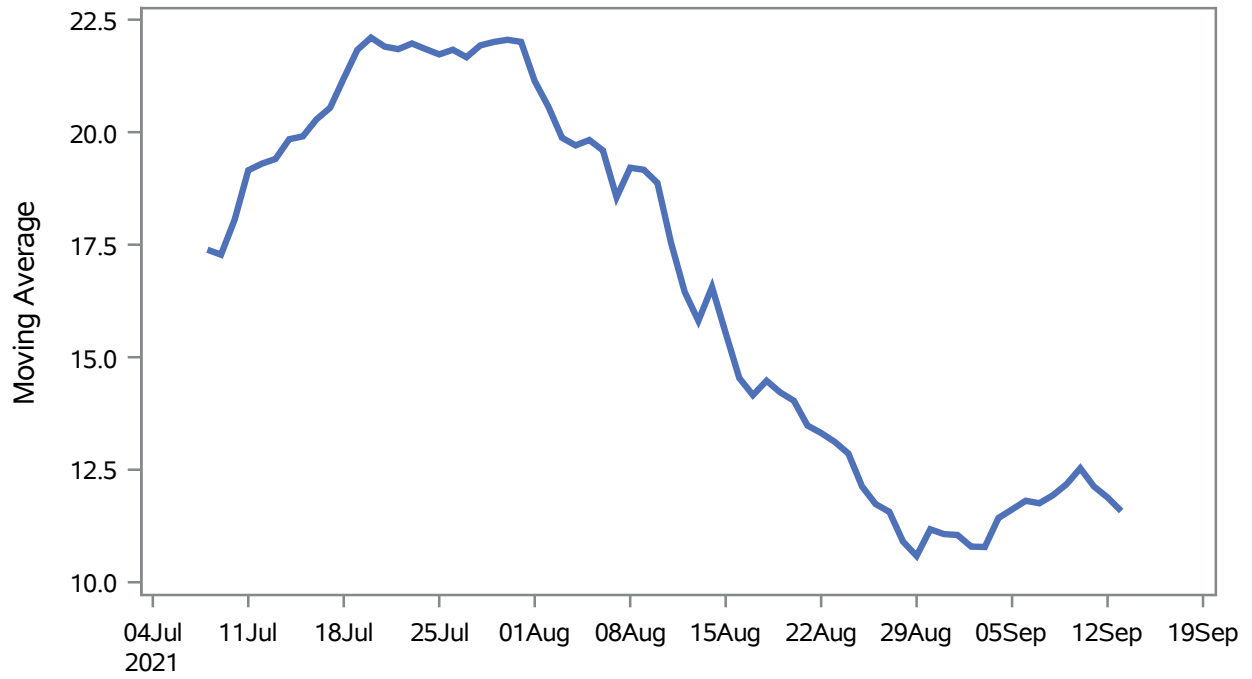
1) Disease onset date 2) Disease diagnosis date 3) Lab result collection date 4) Report date to SNHD.

---

**Investigations are ongoing; data are subject to change.  
Reporting through 15SEP2021**

**North Las Vegas zip codes include 89030, 89031, 89032, 89033, 89036, 89081, 89084, 89085, 89086, 89087.**

### Percent of People Receiving COVID-19 Viral Tests Who Have Positive Results in North Las Vegas



Investigations are ongoing; data are subject to change.

Reporting through 15SEP2021

North Las Vegas zip codes include 89030, 89031, 89032, 89033, 89036, 89081, 89084, 89085, 89086, 89087.

**Table 2: Percent of People Receiving COVID-19 Viral Tests Who Have Positive Results in North Las Vegas**

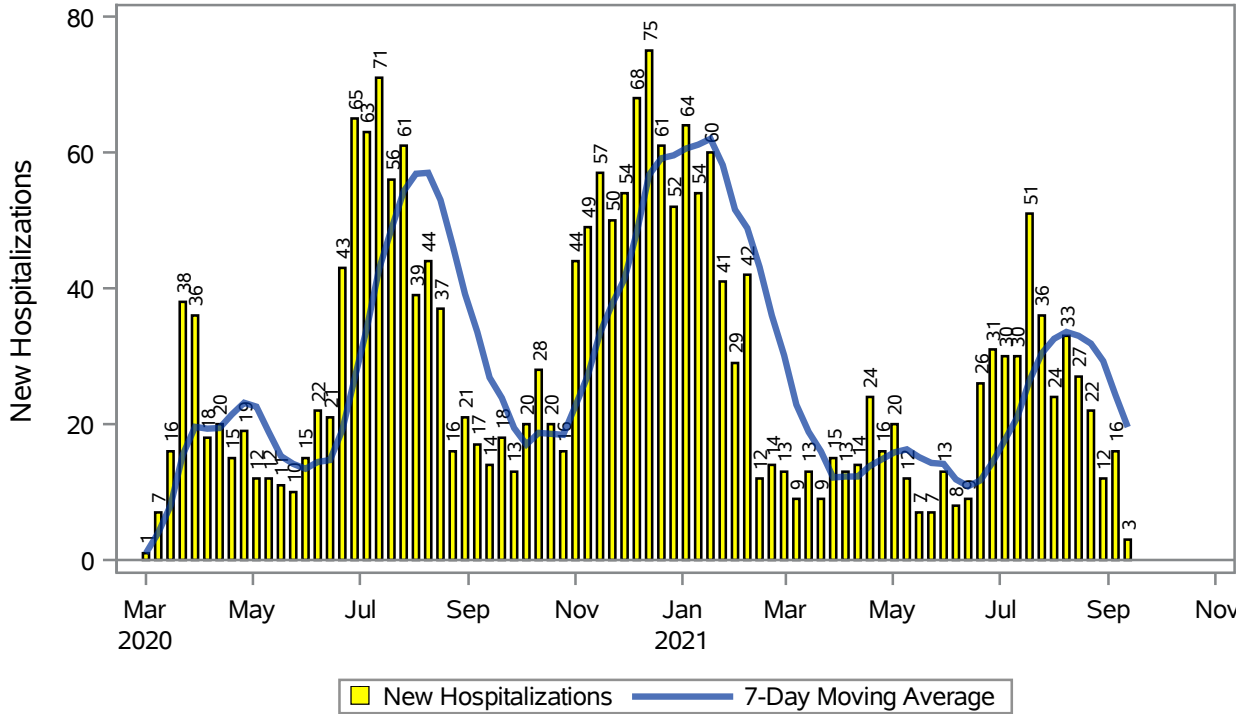
Collection Date	Positive	Negative	Equivocal	Total	% Positivity	7-Day Moving Average
30AUG2021	175	1180	3	1364	12.83	11.2
31AUG2021	129	1326	5	1462	8.82	11.1
01SEP2021	110	1329	4	1448	7.60	11.0
02SEP2021	100	1341	5	1446	6.92	10.8
03SEP2021	120	864	4	991	12.11	10.8
04SEP2021	73	341		418	17.46	11.4
05SEP2021	55	298		353	15.58	11.6
06SEP2021	57	338	1	402	14.18	11.8
07SEP2021	142	1535	3	1683	8.44	11.8
08SEP2021	138	1413	3	1560	8.85	11.9
09SEP2021	117	1232	2	1353	8.65	12.2
10SEP2021	122	713	1	837	14.58	12.5
11SEP2021	55	321		376	14.63	12.1
12SEP2021	48	298		346	13.87	11.9
13SEP2021	80	583		663	12.07	11.6

Note: Testing Data includes a 3 day delay

**Investigations are ongoing; data are subject to change.  
Reporting through 15SEP2021**

**North Las Vegas zip codes include 89030, 89031, 89032, 89033, 89036, 89081, 89084, 89085, 89086, 89087.**

### COVID19 Hospitalizations for North Las Vegas, 7-Day Moving Average



Investigations are ongoing; data are subject to change.

Reporting through 15SEP2021

North Las Vegas zip codes include 89030, 89031, 89032, 89033, 89036, 89081, 89084, 89085, 89086, 89087.

**Table 3: New COVID19-Related Hospitalizations and 7-Day Moving Average in North Las Vegas, previous month**

Week	Hospitalizations	7-Day Moving Average
22AUG2021	22	31.9
29AUG2021	12	29.3
05SEP2021	16	24.3
12SEP2021	3	19.6

---

Note1: Admission Date is calculated as follows based on completed information:  
A) COVID19 Case is hospitalized B) COVID19 Case has a hospital admission date.

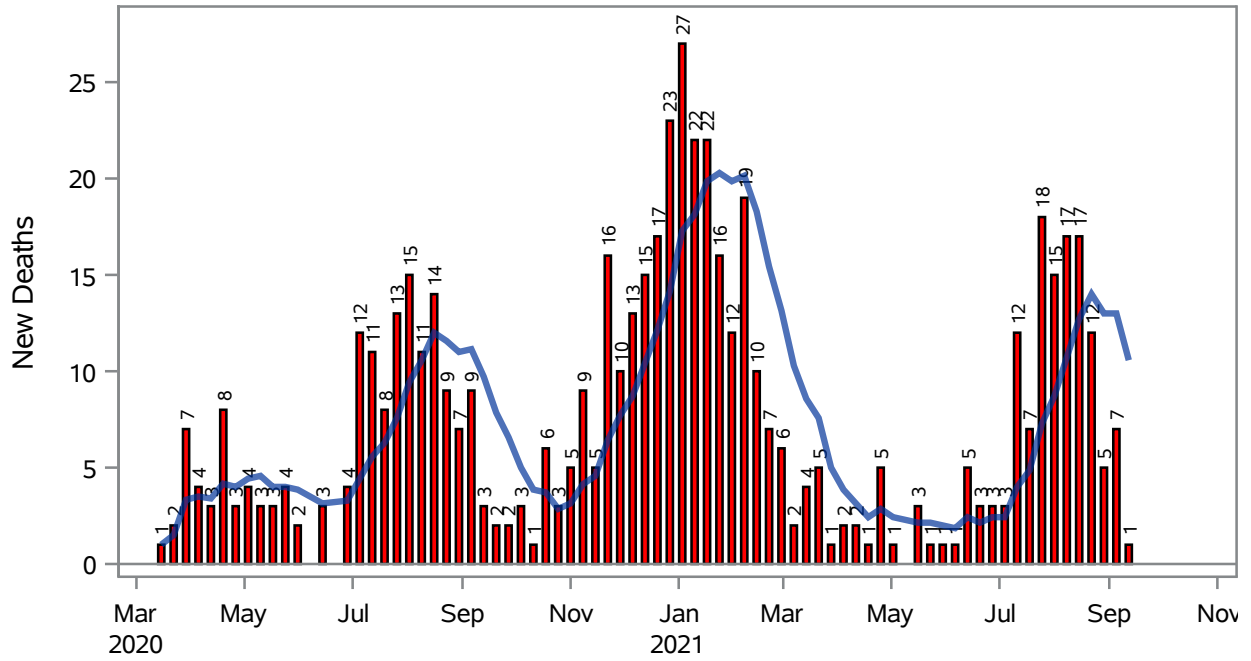
If admission date is missing, then the following is substituted temporarily, in order:  
1) Disease onset date 2) Disease diagnosis date 3) Lab result collection date 4) Report date to SNHD.

---

**Investigations are ongoing; data are subject to change.  
Reporting through 15SEP2021**

**North Las Vegas zip codes include 89030, 89031, 89032, 89033, 89036, 89081, 89084, 89085, 89086, 89087.**

### COVID19 Deaths for North Las Vegas, 7-Day Moving Average



■ New Deaths      — 7-Day Moving Average

Investigations are ongoing; data are subject to change.

Reporting through 15SEP2021

North Las Vegas zip codes include 89030, 89031, 89032, 89033, 89036, 89081, 89084, 89085, 89086, 89087.

**Table 4: New COVID19-Related Deaths and 7-Day Moving Average in North Las Vegas, Previous Month**

Week	Deaths	7-Day Moving Average
22AUG2021	12	14.0
29AUG2021	5	13.0
05SEP2021	7	13.0
12SEP2021	1	10.6

---

Note1: Date of Death is calculated as follows based on completed information:  
A) COVID19 Case is reported as deceased B) COVID19 Case has a reported date of death.

If date of death is missing, then the following is substituted temporarily, in order:  
1) Disease onset date 2) Disease diagnosis date  
3) Lab result collection date 4) Report date to SNHD.

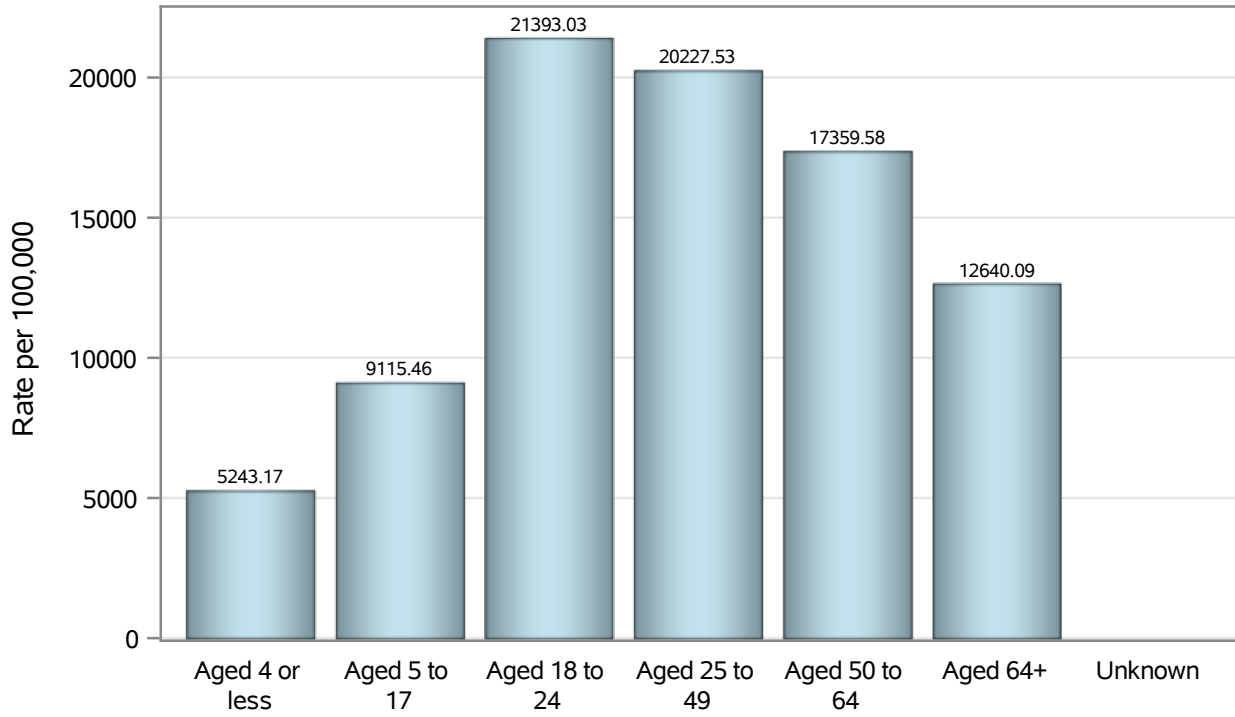
---

**Investigations are ongoing; data are subject to change.  
Reporting through 15SEP2021**

**North Las Vegas zip codes include 89030, 89031, 89032, 89033, 89036, 89081, 89084, 89085, 89086, 89087.**



### Case Age Rates in North Las Vegas

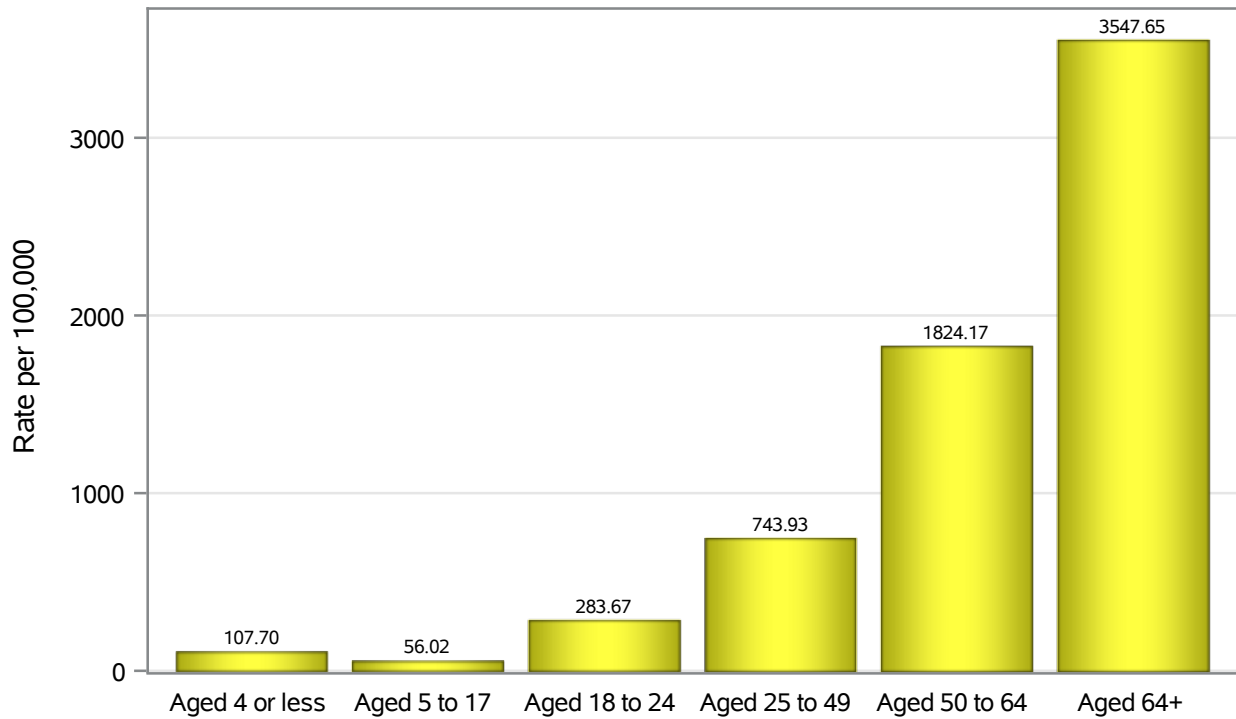


Investigations are ongoing; data are subject to change.

Reporting through 15SEP2021

North Las Vegas zip codes include 89030, 89031, 89032, 89033, 89036, 89081, 89084, 89085, 89086, 89087.

### Hospitalization Age Rates in North Las Vegas

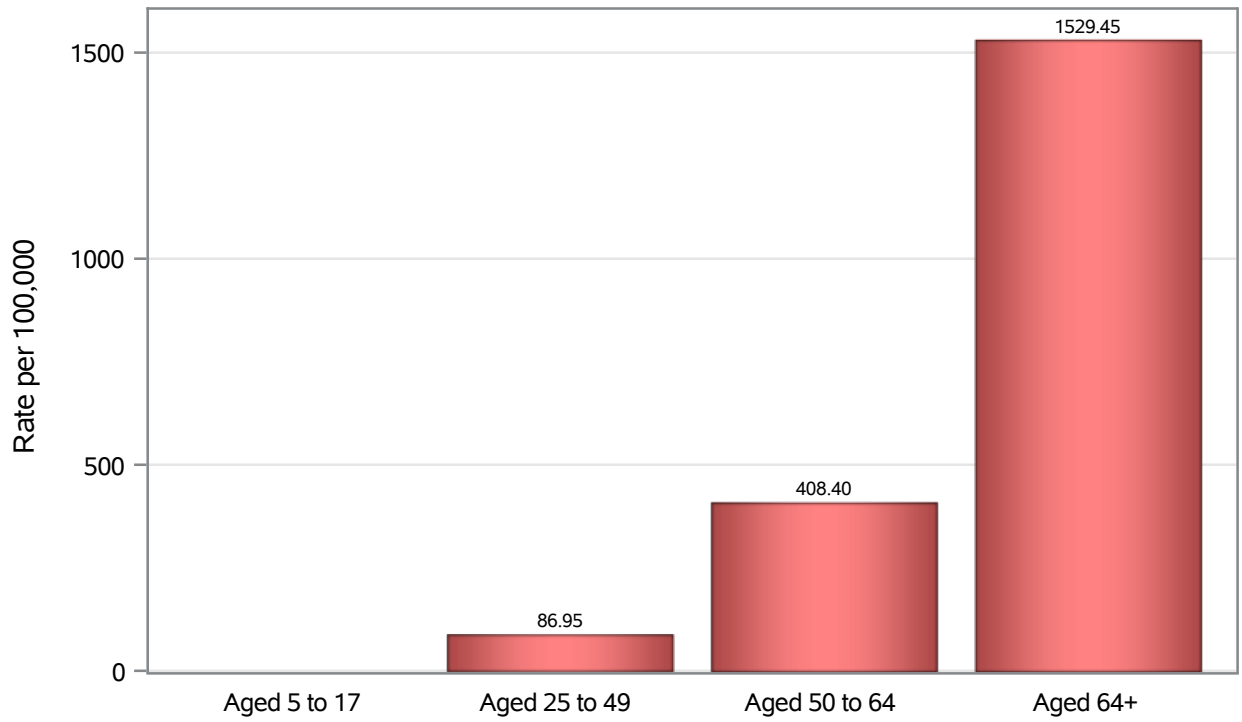


Investigations are ongoing; data are subject to change.

Reporting through 15SEP2021

North Las Vegas zip codes include 89030, 89031, 89032, 89033, 89036, 89081, 89084, 89085, 89086, 89087.

### Death Age Rates in North Las Vegas



Investigations are ongoing; data are subject to change.

Reporting through 15SEP2021

North Las Vegas zip codes include 89030, 89031, 89032, 89033, 89036, 89081, 89084, 89085, 89086, 89087.

**Table 5: Age and COVID19 in North Las Vegas**

Case Status	Age Categories	N	%	Population	Rate per 100,000
Cases	Aged 4 or less	925	2.5	17,642	5243.2
	Aged 5 to 17	4556	12.5	49,981	9115.5
	Aged 18 to 24	4902	13.4	22,914	21393
	Aged 25 to 49	16749	45.9	82,803	20228
	Aged 50 to 64	6376	17.5	36,729	17360
	Aged 64+	3000	8.2	23,734	12640
	Unknown	7	0.0	.	.
Hospitalizations	Aged 4 or less	19	0.8	17,642	107.70
	Aged 5 to 17	28	1.3	49,981	56.02
	Aged 18 to 24	65	2.9	22,914	283.67
	Aged 25 to 49	616	27.5	82,803	743.93
	Aged 50 to 64	670	29.9	36,729	1824.2
	Aged 64+	842	37.6	23,734	3547.7
Deaths	Aged 5 to 17	1	0.2	49,981	.
	Aged 25 to 49	72	12.3	82,803	86.95
	Aged 50 to 64	150	25.6	36,729	408.40
	Aged 64+	363	61.9	23,734	1529.5

---

Note1: Population data source for calculating rate estimates: U.S. Census Bureau, ACS 5-year estimate.

Note2: Rates for categories with fewer than 12 cases are suppressed due to high relative standard error.

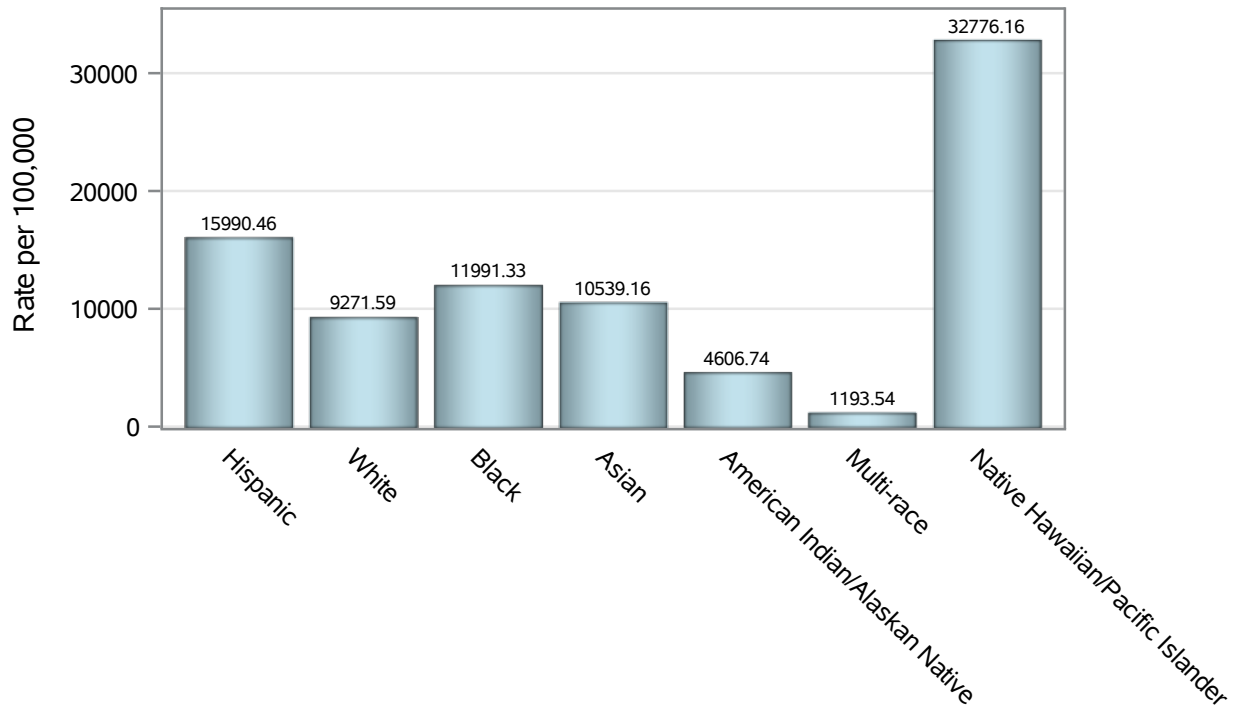
Note3: Hospitalizations are regardless of deceased status; Deaths are regardless of hospitalization status

---

**Investigations are ongoing; data are subject to change.  
Reporting through 15SEP2021**

**North Las Vegas zip codes include 89030, 89031, 89032, 89033, 89036, 89081, 89084, 89085, 89086, 89087.**

### Case Race/Ethnicity Rates in North Las Vegas

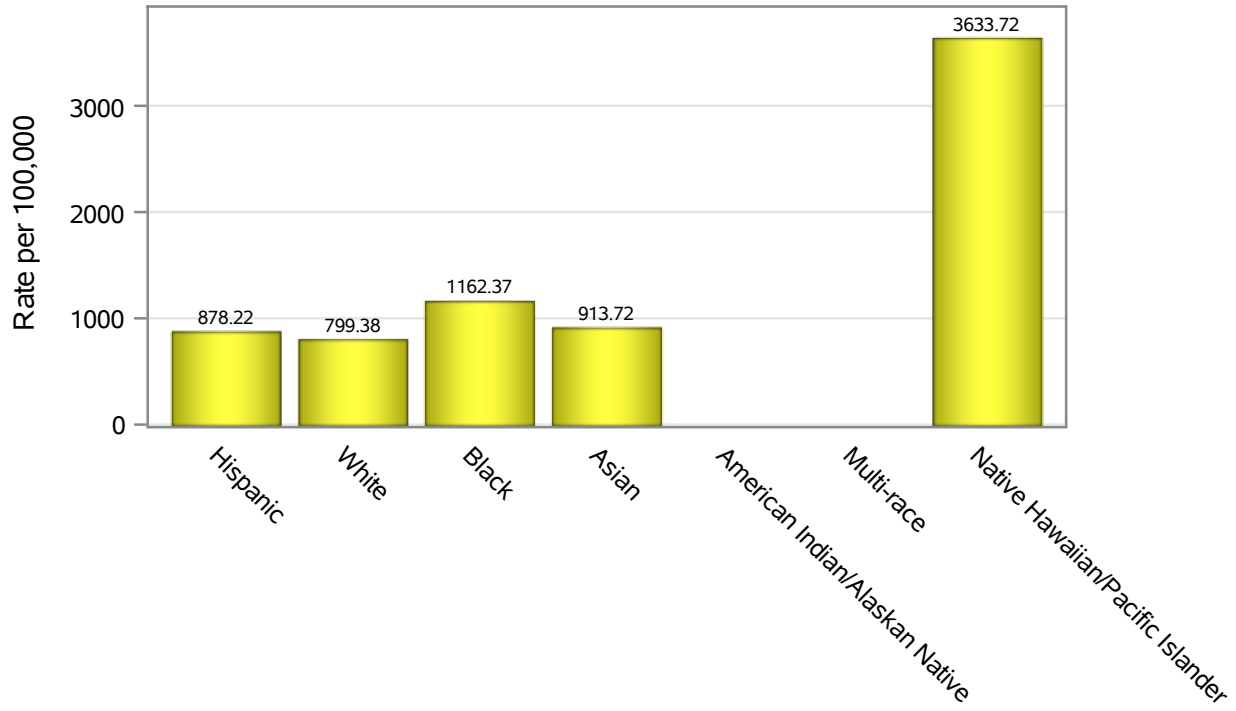


Investigations are ongoing; data are subject to change.

Reporting through 15SEP2021

North Las Vegas zip codes include 89030, 89031, 89032, 89033, 89036, 89081, 89084, 89085, 89086, 89087.

### Hospitalization Race/Ethnicity Rates in North Las Vegas

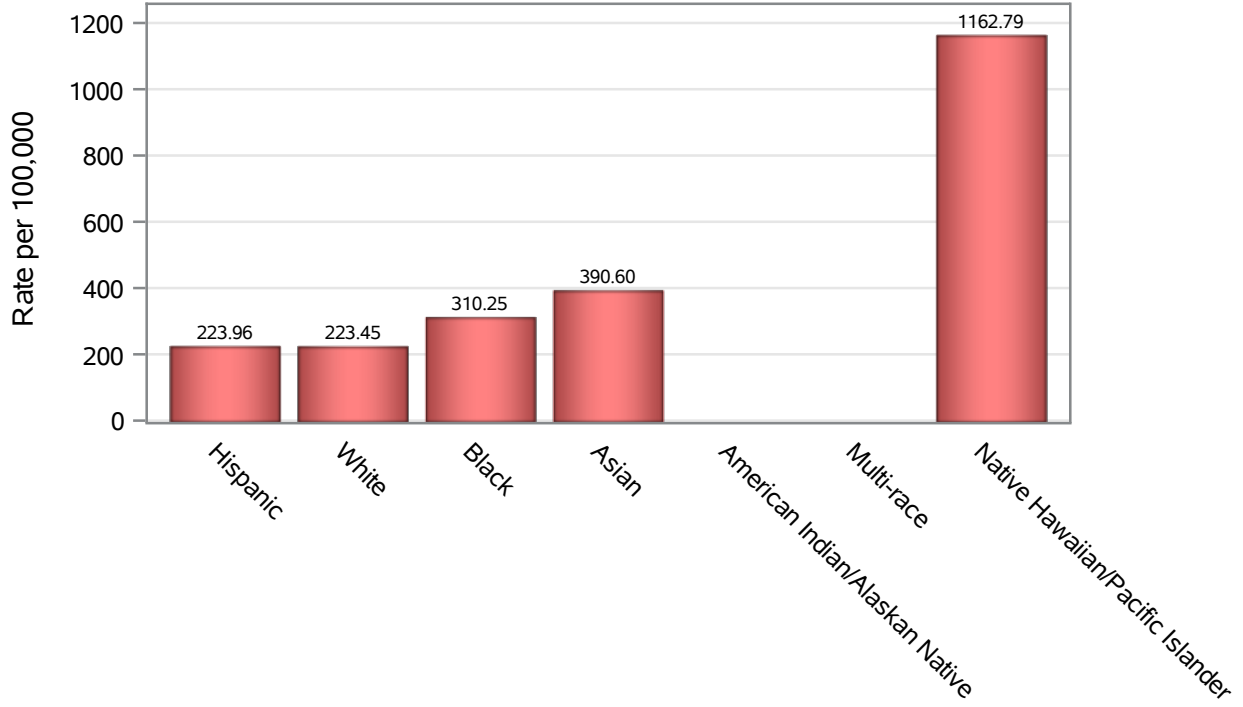


Investigations are ongoing; data are subject to change.

Reporting through 15SEP2021

North Las Vegas zip codes include 89030, 89031, 89032, 89033, 89036, 89081, 89084, 89085, 89086, 89087.

### Death Race/Ethnicity Rates in North Las Vegas



Investigations are ongoing; data are subject to change.

Reporting through 15SEP2021

North Las Vegas zip codes include 89030, 89031, 89032, 89033, 89036, 89081, 89084, 89085, 89086, 89087.

**Table 6: Race/Ethnicity and COVID19 in North Las Vegas**

Case Status	Race Ethnicity Categories	N	%	Population	Rate per 100,000
Cases	Hispanic	15422	42.2	96,445	15990
	White	5892	16.1	63,549	9271.6
	Black	5643	15.5	47,059	11991
	Asian	1511	4.1	14,337	10539
	American Indian/Alaskan Native	41	0.1	890	4606.7
	Multi-race	116	0.3	9,719	1193.5
	Native Hawaiian/Pacific Islander	451	1.2	1,376	32776
	Unknown	7439	20.4	.	.
Hospitalizations	Hispanic	847	37.8	96,445	878.22
	White	508	22.7	63,549	799.38
	Black	547	24.4	47,059	1162.4
	Asian	131	5.8	14,337	913.72
	American Indian/Alaskan Native	8	0.4	890	.
	Multi-race	6	0.3	9,719	.
	Native Hawaiian/Pacific Islander	50	2.2	1,376	3633.7
	Unknown	143	6.4	.	.
Deaths	Hispanic	216	36.9	96,445	223.96
	White	142	24.2	63,549	223.45
	Black	146	24.9	47,059	310.25
	Asian	56	9.6	14,337	390.60
	American Indian/Alaskan Native	4	0.7	890	.
	Multi-race	1	0.2	9,719	.
	Native Hawaiian/Pacific Islander	16	2.7	1,376	1162.8
	Unknown	5	0.9	.	.

Note1: Population data source for calculating rate estimates: U.S. Census Bureau, ACS 5-year estimate.

Note2: Rates for categories with fewer than 12 cases are suppressed due to high relative standard error.

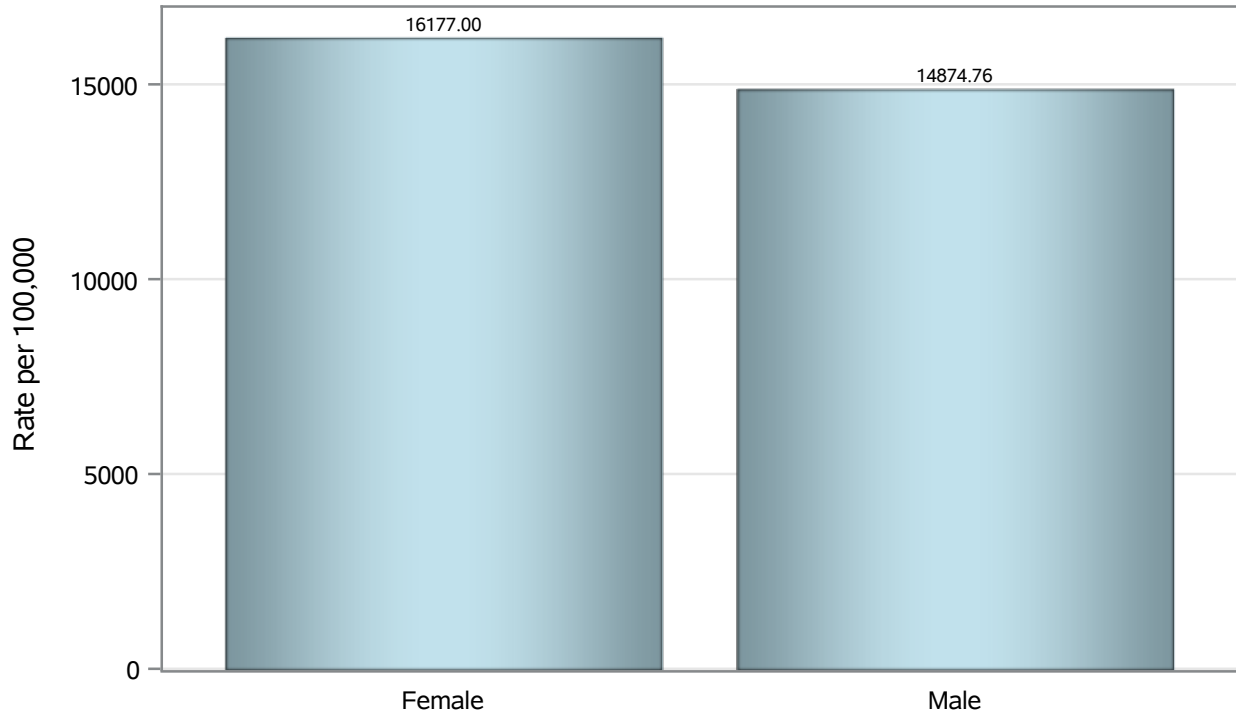
Note3: Hospitalizations are regardless of deceased status; Deaths are regardless of hospitalization status

**Investigations are ongoing; data are subject to change.  
Reporting through 15SEP2021**

**North Las Vegas zip codes include 89030, 89031, 89032, 89033, 89036, 89081, 89084, 89085, 89086, 89087.**



### Case Birth Sex Rates in North Las Vegas

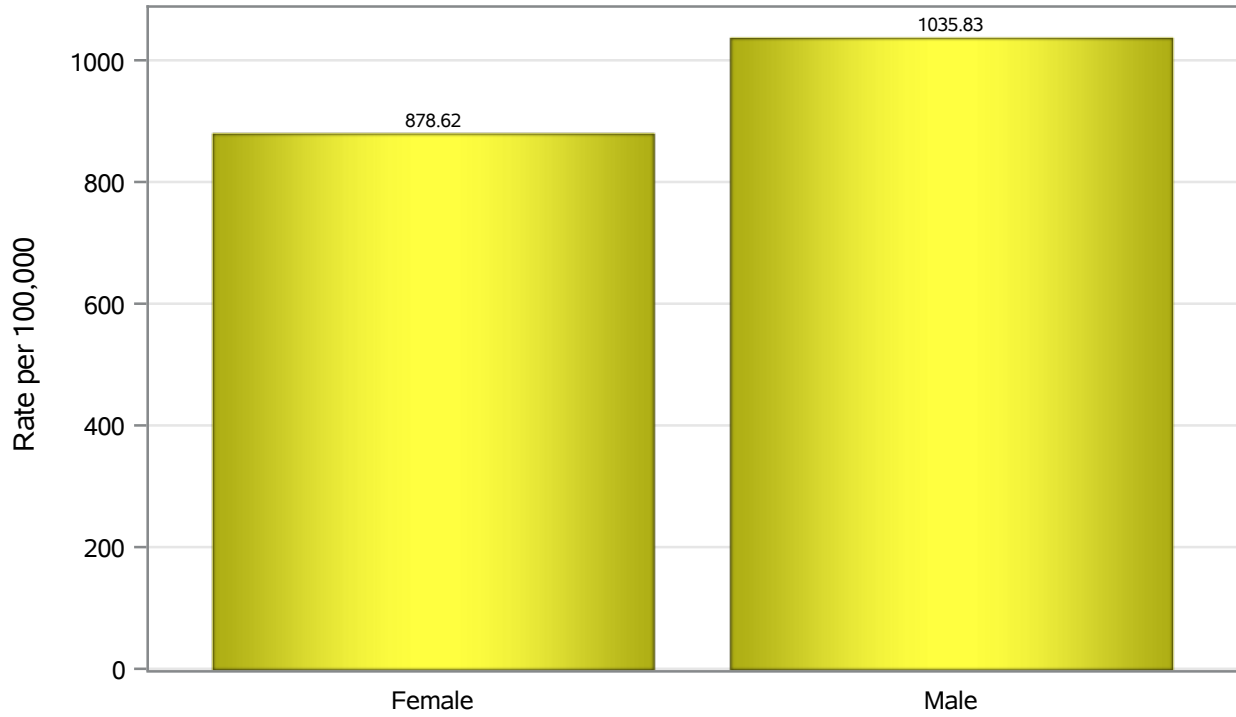


Investigations are ongoing; data are subject to change.

Reporting through 15SEP2021

North Las Vegas zip codes include 89030, 89031, 89032, 89033, 89036, 89081, 89084, 89085, 89086, 89087.

### Hospitalization Birth Sex Rates in North Las Vegas

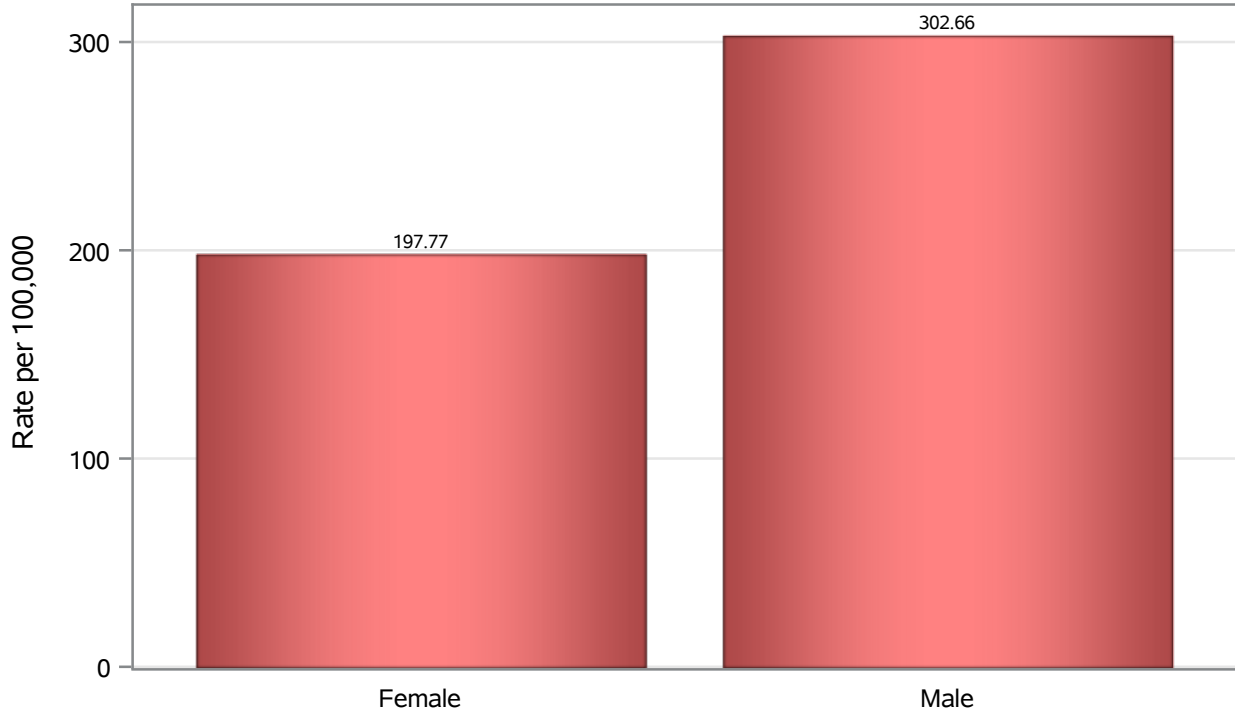


Investigations are ongoing; data are subject to change.

Reporting through 15SEP2021

North Las Vegas zip codes include 89030, 89031, 89032, 89033, 89036, 89081, 89084, 89085, 89086, 89087.

### Death Birth Sex Rates in North Las Vegas



Investigations are ongoing; data are subject to change.

Reporting through 15SEP2021

North Las Vegas zip codes include 89030, 89031, 89032, 89033, 89036, 89081, 89084, 89085, 89086, 89087.

**Table 7: Birth Sex and COVID19 in North Las Vegas**

Case Status	Birth Sex Categories	N	%	Population	Rate per 100,000
Cases	Female	19222	52.6	118823	16177
	Male	17103	46.8	114980	14875
	Unknown	190	0.5	.	.
Hospitalizations	Female	1044	46.6	118823	878.62
	Male	1191	53.2	114980	1035.8
	Unknown	5	0.2	.	.
Deaths	Female	235	40.1	118823	197.77
	Male	348	59.4	114980	302.66
	Unknown	3	0.5	.	.

Note1: Population data source for calculating rate estimates: U.S. Census Bureau, ACS 5-year estimate.

Note2: Rates for categories with fewer than 12 cases are suppressed due to high relative standard error.

Note3: Hospitalizations are regardless of deceased status; Deaths are regardless of hospitalization status

**Investigations are ongoing; data are subject to change.  
Reporting through 15SEP2021**

**North Las Vegas zip codes include 89030, 89031, 89032, 89033, 89036, 89081, 89084, 89085, 89086, 89087.**