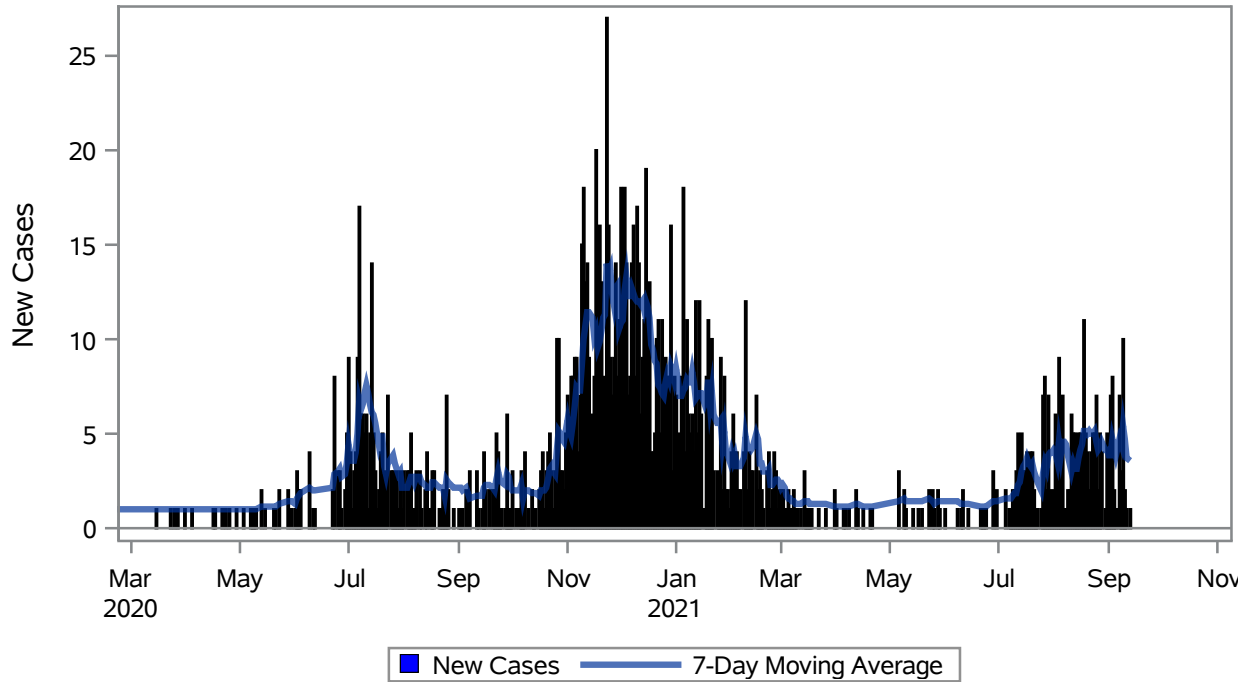


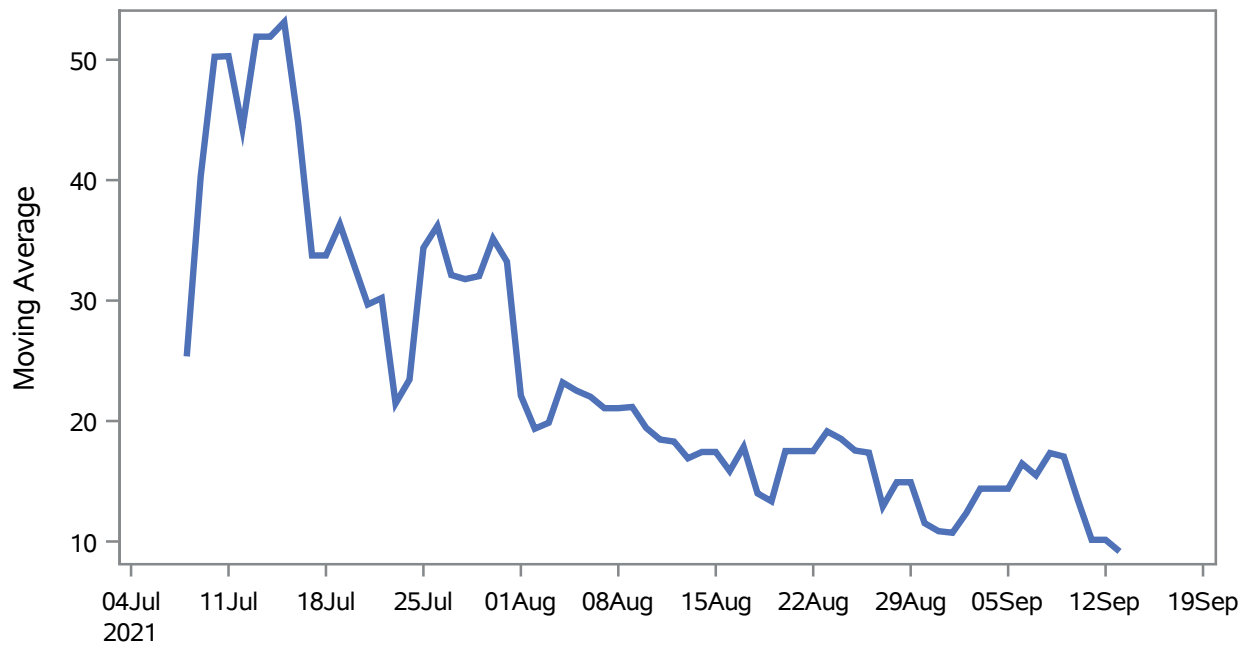
COVID19 Cases for Mesquite, 7-Day Moving Average



Investigations are ongoing; data are subject to change.
Reporting through 15SEP2021

Mesquite zip codes include 89027,89034. The U.S. Census Bureau data uses Zip Code Tabulation Area (ZCTA), which does not list 89034 but has incorporated areas of 89034 within 89027 through the American Community Survey (ACS) 5-Year Estimates.

Percent of People Receiving COVID-19 Viral Tests Who Have Positive Results in Mesquite



Investigations are ongoing; data are subject to change.

Reporting through 15SEP2021

Mesquite zip codes include 89027,89034. The U.S. Census Bureau data uses Zip Code Tabulation Area (ZCTA), which does not list 89034 but has incorporated areas of 89034 within 89027 through the American Community Survey (ACS) 5-Year Estimates.

Table 1: Age and COVID19 in Mesquite

Case Status	Age Categories	N	%	Population	Rate per 100,000
Cases	Aged 4 or less	16	1.0	702	2279.2
	Aged 5 to 17	108	6.9	2,217	4871.4
	Aged 18 to 24	158	10.1	938	16844
	Aged 25 to 49	442	28.3	3,386	13054
	Aged 50 to 64	347	22.2	3,371	10294
	Aged 64+	489	31.3	7,290	6707.8
Hospitalizations	Aged 4 or less	1	1.0	702	--
	Aged 5 to 17	1	1.0	2,217	--
	Aged 25 to 49	9	9.4	3,386	--
	Aged 50 to 64	18	18.8	3,371	533.97
	Aged 64+	67	69.8	7,290	919.07
Deaths	Aged 50 to 64	1	3.2	3,371	--
	Aged 64+	30	96.8	7,290	411.52

Note1: Population data source for calculating rate estimates: U.S. Census Bureau, ACS 5-year estimate.

Note2: Rates for categories with fewer than 12 cases are suppressed due to high relative standard error.

Note3: Hospitalizations are regardless of deceased status; Deaths are regardless of hospitalization status

**Investigations are ongoing; data are subject to change.
Reporting through 15SEP2021**

Mesquite zip codes include 89027,89034. The U.S. Census Bureau data uses Zip Code Tabulation Area (ZCTA), which does not list 89034 but has incorporated areas of 89034 within 89027 through the American Community Survey (ACS) 5-Year Estimates.

Table 2: Race/Ethnicity and COVID19 in Mesquite

Case Status	Race Ethnicity Categories	N	%	Population	Rate per 100,000
Cases	Hispanic	491	31.5	3,738	13135
	White	761	48.8	13,120	5800.3
	Black	--	--	148	--
	Asian	--	--	486	5967.1
	American Indian/Alaskan Native	--	--	95	--
	Multi-race	--	--	240	--
	Native Hawaiian/Pacific Islander	--	--	30	--
	Unknown	259	16.6	.	.
Hospitalizations	Hispanic	21	21.9	3,738	561.80
	White	63	65.6	13,120	480.18
	Black	--	--	148	--
	Asian	--	--	486	--
	American Indian/Alaskan Native	--	--	95	--
	Multi-race	--	--	240	--
	Native Hawaiian/Pacific Islander	--	--	30	--
	Unknown	--	--	.	.
Deaths	Hispanic	2	6.5	3,738	--
	White	28	90.3	13,120	213.41
	Asian	--	--	486	--

Note1: Population data source for calculating rate estimates: U.S. Census Bureau, ACS 5-year estimate.

Note2: Rates for categories with fewer than 12 cases are suppressed due to high relative standard error. Counts for categories with population less than 500 are suppressed for confidentiality.

Note3: Due to suppression, the total counts per case status may not equal expected totals.

Note4: Hospitalizations are regardless of deceased status; Deaths are regardless of hospitalization status

**Investigations are ongoing; data are subject to change.
Reporting through 15SEP2021**

Mesquite zip codes include 89027,89034. The U.S. Census Bureau data uses Zip Code Tabulation Area (ZCTA), which does not list 89034 but has incorporated areas of 89034 within 89027 through the American Community Survey (ACS) 5-Year Estimates.

Table 3: Birth Sex and COVID19 in Mesquite

Case Status	Birth Sex Categories	N	%	Population	Rate per 100,000
Cases	Female	834	53.5	9,111	9153.8
	Male	714	45.8	8,793	8120.1
	Unknown	12	0.8	.	.
Hospitalizations	Female	45	46.9	9,111	493.91
	Male	51	53.1	8,793	580.01
Deaths	Female	11	35.5	9,111	--
	Male	20	64.5	8,793	227.45

Note1: Population data source for calculating rate estimates: U.S. Census Bureau, ACS 5-year estimate.

Note2: Rates for categories with fewer than 12 cases are suppressed due to high relative standard error. Counts for categories with population less than 500 are suppressed for confidentiality.

Note3: Hospitalizations are regardless of deceased status; Deaths are regardless of hospitalization status

**Investigations are ongoing; data are subject to change.
Reporting through 15SEP2021**

Mesquite zip codes include 89027,89034. The U.S. Census Bureau data uses Zip Code Tabulation Area (ZCTA), which does not list 89034 but has incorporated areas of 89034 within 89027 through the American Community Survey (ACS) 5-Year Estimates.