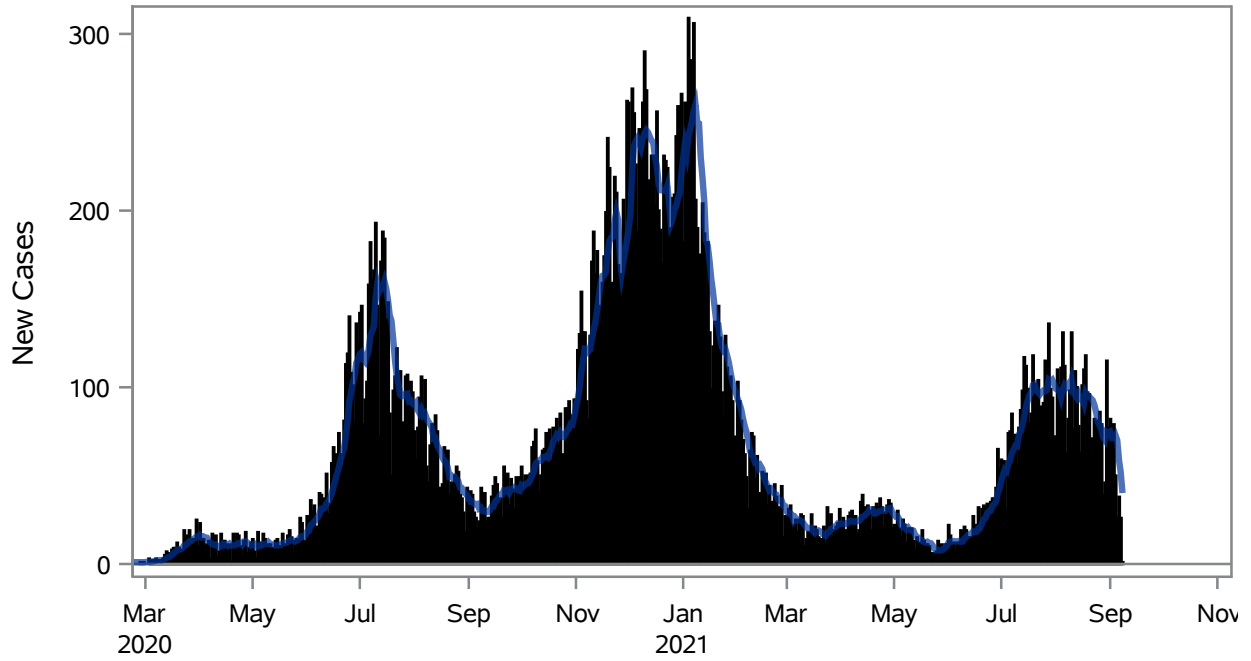


### COVID19 Cases for North Las Vegas, 7-Day Moving Average



■ New Cases    — 7-Day Moving Average

Investigations are ongoing; data are subject to change.

Reporting through 08SEP2021

North Las Vegas zip codes include 89030, 89031, 89032, 89033, 89036, 89081, 89084, 89085, 89086, 89087.

**Table 1: New COVID19 Cases and 7-Day Moving Average in North Las Vegas, Previous Two Weeks**

Date (Daily)	New Cases	7-Day Moving Average
26AUG2021	86	78.57
27AUG2021	79	76.14
28AUG2021	39	71.57
29AUG2021	46	70.14
30AUG2021	115	74.86
31AUG2021	77	74.29
01SEP2021	82	74.86
02SEP2021	61	71.29
03SEP2021	79	71.29
04SEP2021	50	72.86
05SEP2021	26	70.00
06SEP2021	38	59.00

---

Note1: Event Date is calculated as follows based on completed information:

1) Disease onset date 2) Disease diagnosis date 3) Lab result collection date 4) Report date to SNHD.

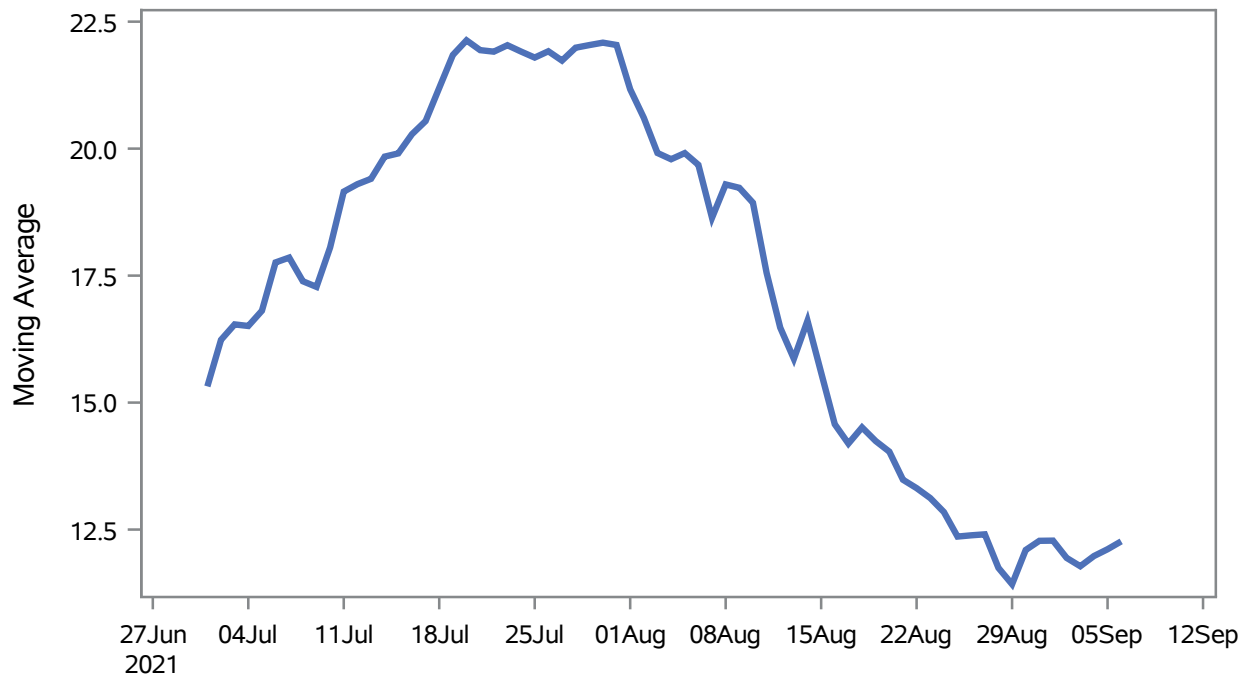
---

**Investigations are ongoing; data are subject to change.**

**Reporting through 08SEP2021**

**North Las Vegas zip codes include 89030, 89031, 89032, 89033, 89036, 89081, 89084, 89085, 89086, 89087.**

### Percent of People Receiving COVID-19 Viral Tests Who Have Positive Results in North Las Vegas



Investigations are ongoing; data are subject to change.

Reporting through 08SEP2021

North Las Vegas zip codes include 89030, 89031, 89032, 89033, 89036, 89081, 89084, 89085, 89086, 89087.

**Table 2: Percent of People Receiving COVID-19 Viral Tests Who Have Positive Results in North Las Vegas**

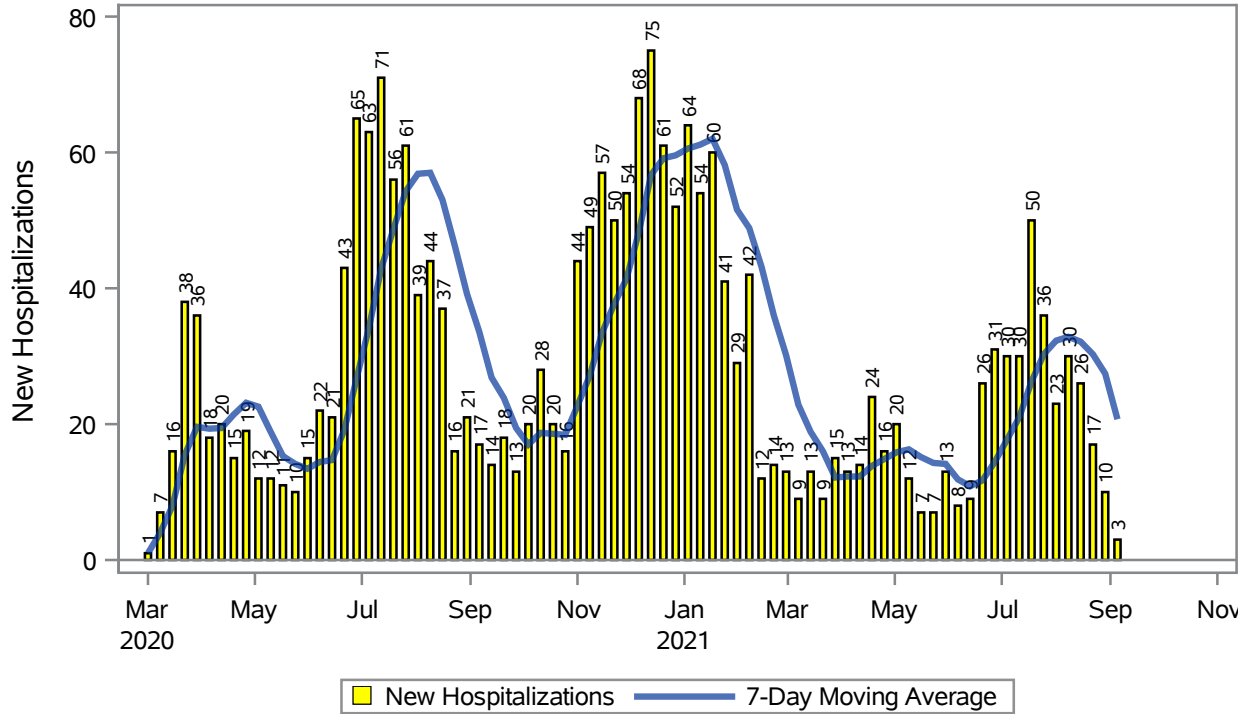
Collection Date	Positive	Negative	Equivocal	Total	% Positivity	7-Day Moving Average
23AUG2021	118	1237	3	1358	8.69	13.1
24AUG2021	125	1190	3	1322	9.46	12.8
25AUG2021	107	1015	2	1128	9.49	12.4
26AUG2021	117	888		1005	11.64	12.4
27AUG2021	121	765	2	897	13.49	12.4
28AUG2021	57	377		440	12.95	11.7
29AUG2021	55	331		386	14.25	11.4
30AUG2021	157	1006	2	1171	13.41	12.1
31AUG2021	128	1059	5	1194	10.72	12.3
01SEP2021	105	991	3	1104	9.51	12.3
02SEP2021	94	919	2	1015	9.26	11.9
03SEP2021	119	838	4	964	12.34	11.8
04SEP2021	57	336		397	14.36	12.0
05SEP2021	53	296		349	15.19	12.1
06SEP2021	50	287	1	345	14.49	12.3

Note: Testing Data includes a 3 day delay

**Investigations are ongoing; data are subject to change.  
Reporting through 08SEP2021**

**North Las Vegas zip codes include 89030, 89031, 89032, 89033, 89036, 89081, 89084, 89085, 89086, 89087.**

### COVID19 Hospitalizations for North Las Vegas, 7-Day Moving Average



Investigations are ongoing; data are subject to change.

Reporting through 08SEP2021

North Las Vegas zip codes include 89030, 89031, 89032, 89033, 89036, 89081, 89084, 89085, 89086, 89087.

**Table 3: New COVID19-Related Hospitalizations and 7-Day Moving Average in North Las Vegas, previous month**

Week	Hospitalizations	7-Day Moving Average
15AUG2021	26	32.1
22AUG2021	17	30.3
29AUG2021	10	27.4
05SEP2021	3	20.7

---

Note1: Admission Date is calculated as follows based on completed information:  
A) COVID19 Case is hospitalized B) COVID19 Case has a hospital admission date.

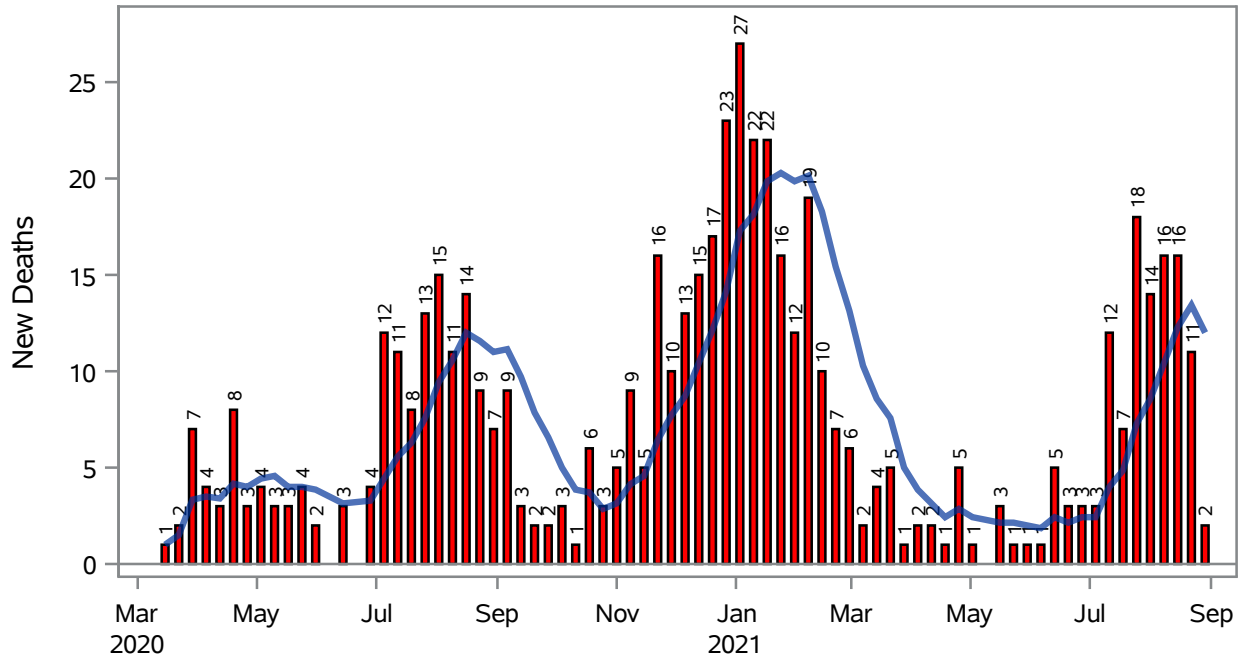
If admission date is missing, then the following is substituted temporarily, in order:  
1) Disease onset date 2) Disease diagnosis date 3) Lab result collection date 4) Report date to SNHD.

---

**Investigations are ongoing; data are subject to change.  
Reporting through 08SEP2021**

**North Las Vegas zip codes include 89030, 89031, 89032, 89033, 89036, 89081, 89084, 89085, 89086, 89087.**

### COVID19 Deaths for North Las Vegas, 7-Day Moving Average



■ New Deaths    — 7-Day Moving Average

Investigations are ongoing; data are subject to change.

Reporting through 08SEP2021

North Las Vegas zip codes include 89030, 89031, 89032, 89033, 89036, 89081, 89084, 89085, 89086, 89087.

**Table 4: New COVID19-Related Deaths and 7-Day Moving Average in North Las Vegas, Previous Month**

Week	Deaths	7-Day Moving Average
15AUG2021	16	12.3
22AUG2021	11	13.4
29AUG2021	2	12.0

---

Note1: Date of Death is calculated as follows based on completed information:  
A) COVID19 Case is reported as deceased B) COVID19 Case has a reported date of death.

If date of death is missing, then the following is substituted temporarily, in order:  
1) Disease onset date 2) Disease diagnosis date  
3) Lab result collection date 4) Report date to SNHD.

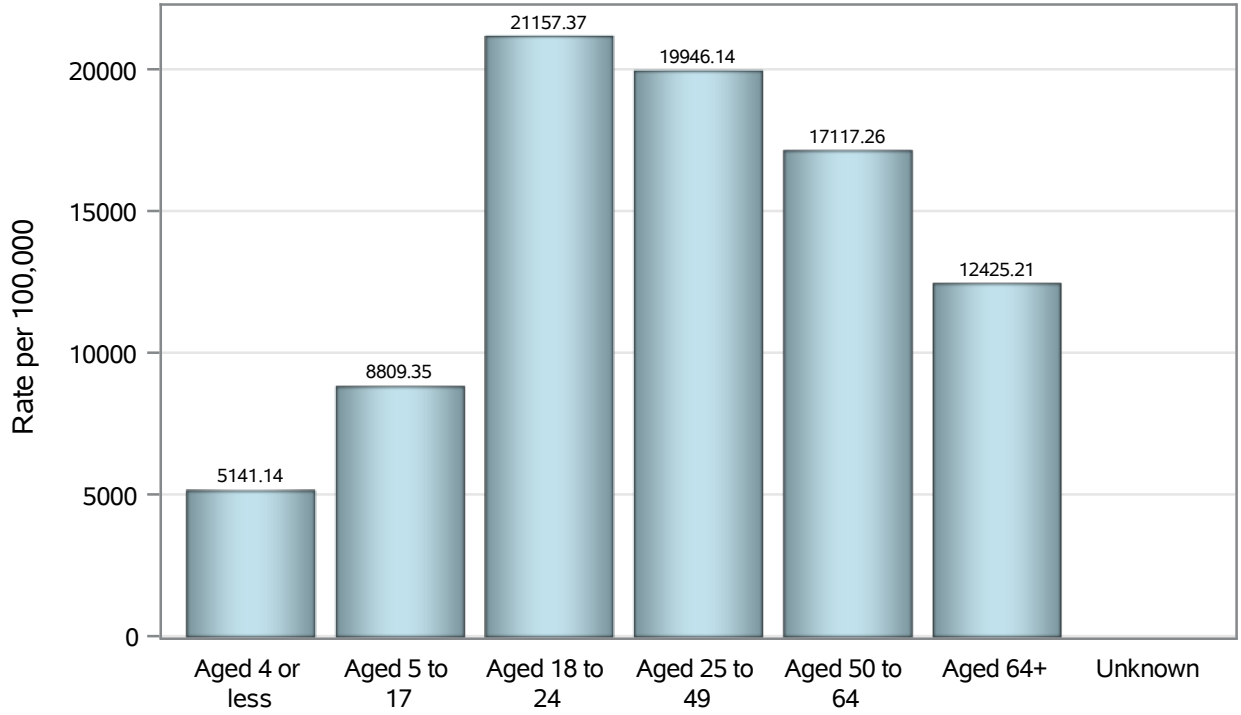
---

**Investigations are ongoing; data are subject to change.  
Reporting through 08SEP2021**

**North Las Vegas zip codes include 89030, 89031, 89032, 89033, 89036, 89081, 89084, 89085, 89086, 89087.**



### Case Age Rates in North Las Vegas

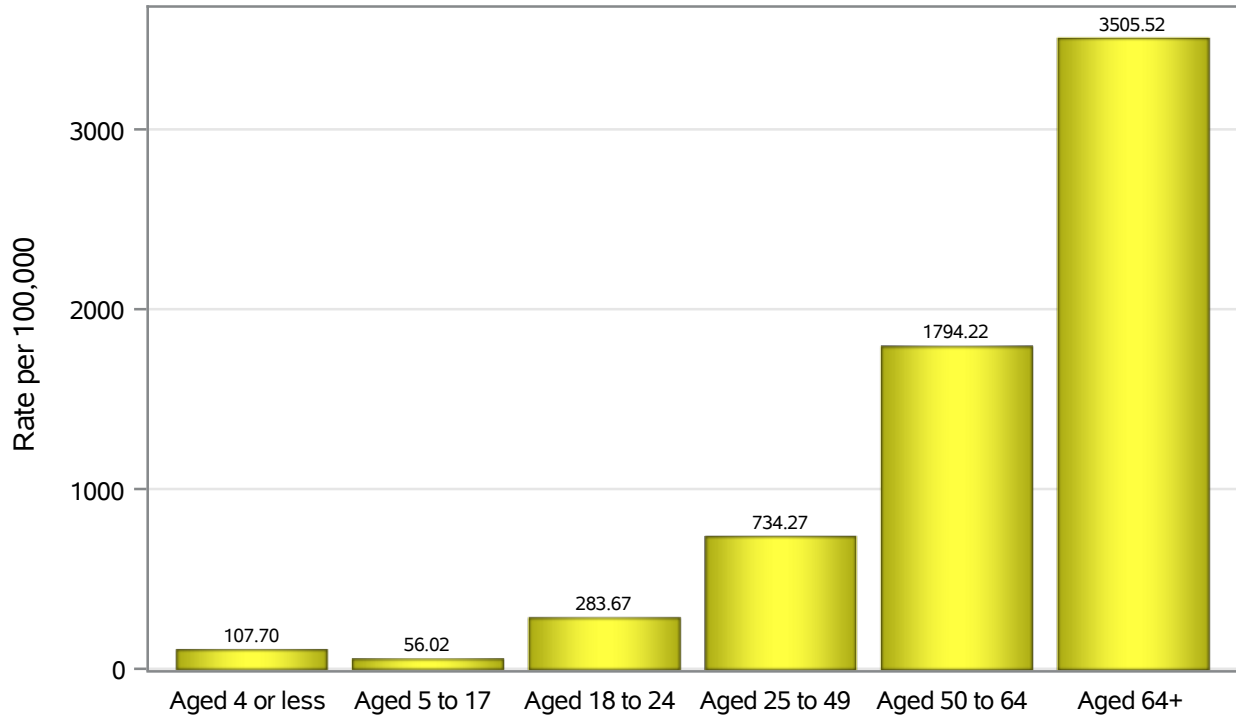


Investigations are ongoing; data are subject to change.

Reporting through 08SEP2021

North Las Vegas zip codes include 89030, 89031, 89032, 89033, 89036, 89081, 89084, 89085, 89086, 89087.

### Hospitalization Age Rates in North Las Vegas

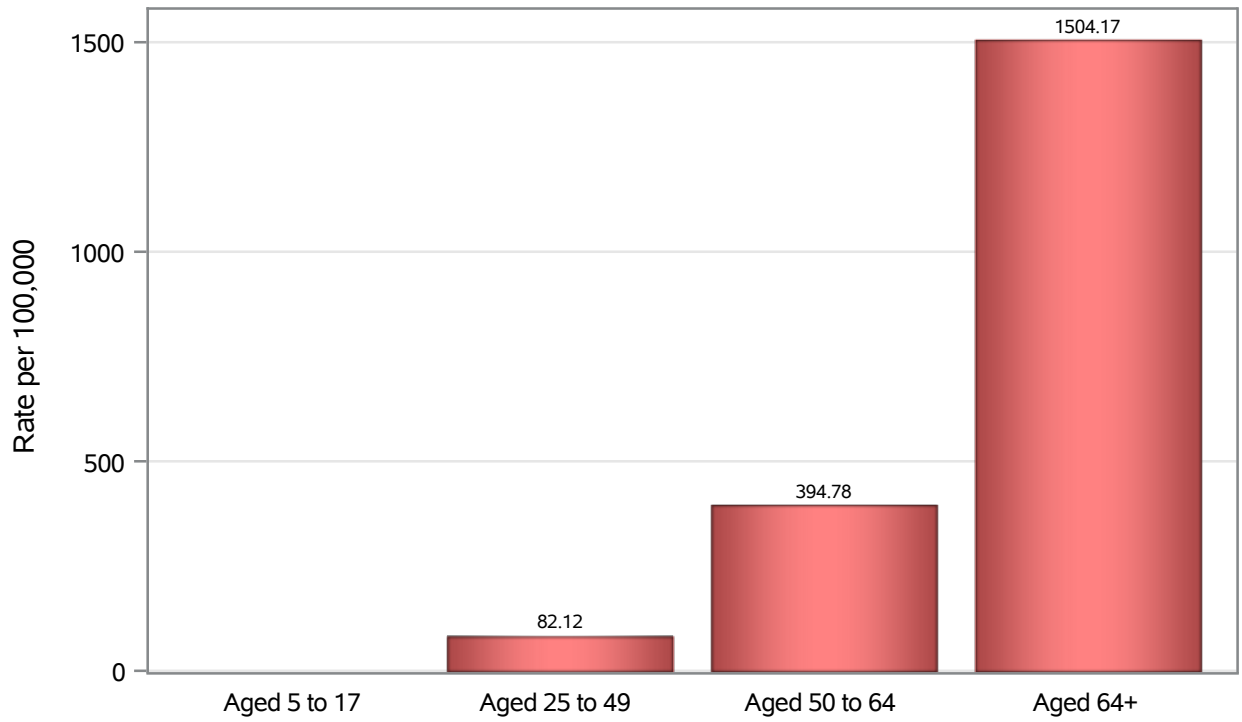


Investigations are ongoing; data are subject to change.

Reporting through 08SEP2021

North Las Vegas zip codes include 89030, 89031, 89032, 89033, 89036, 89081, 89084, 89085, 89086, 89087.

### Death Age Rates in North Las Vegas



Investigations are ongoing; data are subject to change.

Reporting through 08SEP2021

North Las Vegas zip codes include 89030, 89031, 89032, 89033, 89036, 89081, 89084, 89085, 89086, 89087.

**Table 5: Age and COVID19 in North Las Vegas**

Case Status	Age Categories	N	%	Population	Rate per 100,000
Cases	Aged 4 or less	907	2.5	17,642	5141.1
	Aged 5 to 17	4403	12.3	49,981	8809.3
	Aged 18 to 24	4848	13.5	22,914	21157
	Aged 25 to 49	16516	46.0	82,803	19946
	Aged 50 to 64	6287	17.5	36,729	17117
	Aged 64+	2949	8.2	23,734	12425
	Unknown	7	0.0	.	.
Hospitalizations	Aged 4 or less	19	0.9	17,642	107.70
	Aged 5 to 17	28	1.3	49,981	56.02
	Aged 18 to 24	65	2.9	22,914	283.67
	Aged 25 to 49	608	27.5	82,803	734.27
	Aged 50 to 64	659	29.8	36,729	1794.2
	Aged 64+	832	37.6	23,734	3505.5
Deaths	Aged 5 to 17	1	0.2	49,981	.
	Aged 25 to 49	68	11.9	82,803	82.12
	Aged 50 to 64	145	25.4	36,729	394.78
	Aged 64+	357	62.5	23,734	1504.2

---

Note1: Population data source for calculating rate estimates: U.S. Census Bureau, ACS 5-year estimate.

Note2: Rates for categories with fewer than 12 cases are suppressed due to high relative standard error.

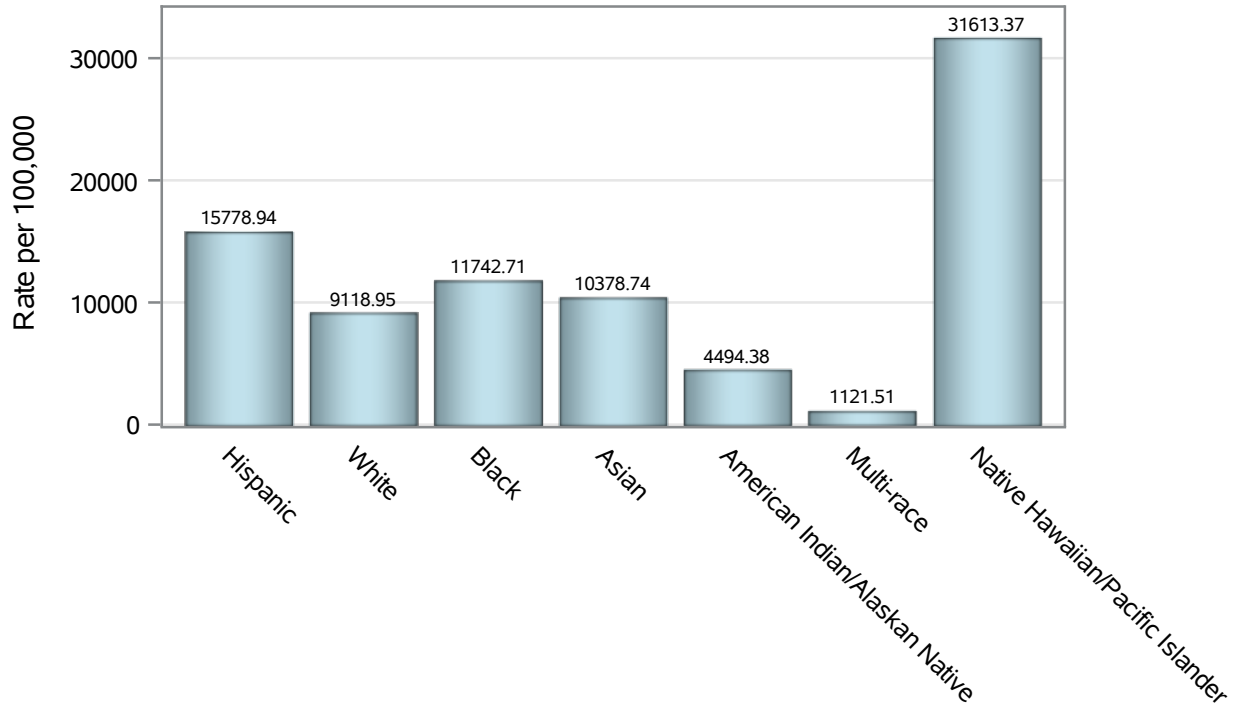
Note3: Hospitalizations are regardless of deceased status; Deaths are regardless of hospitalization status

---

**Investigations are ongoing; data are subject to change.  
Reporting through 08SEP2021**

**North Las Vegas zip codes include 89030, 89031, 89032, 89033, 89036, 89081, 89084, 89085, 89086, 89087.**

### Case Race/Ethnicity Rates in North Las Vegas

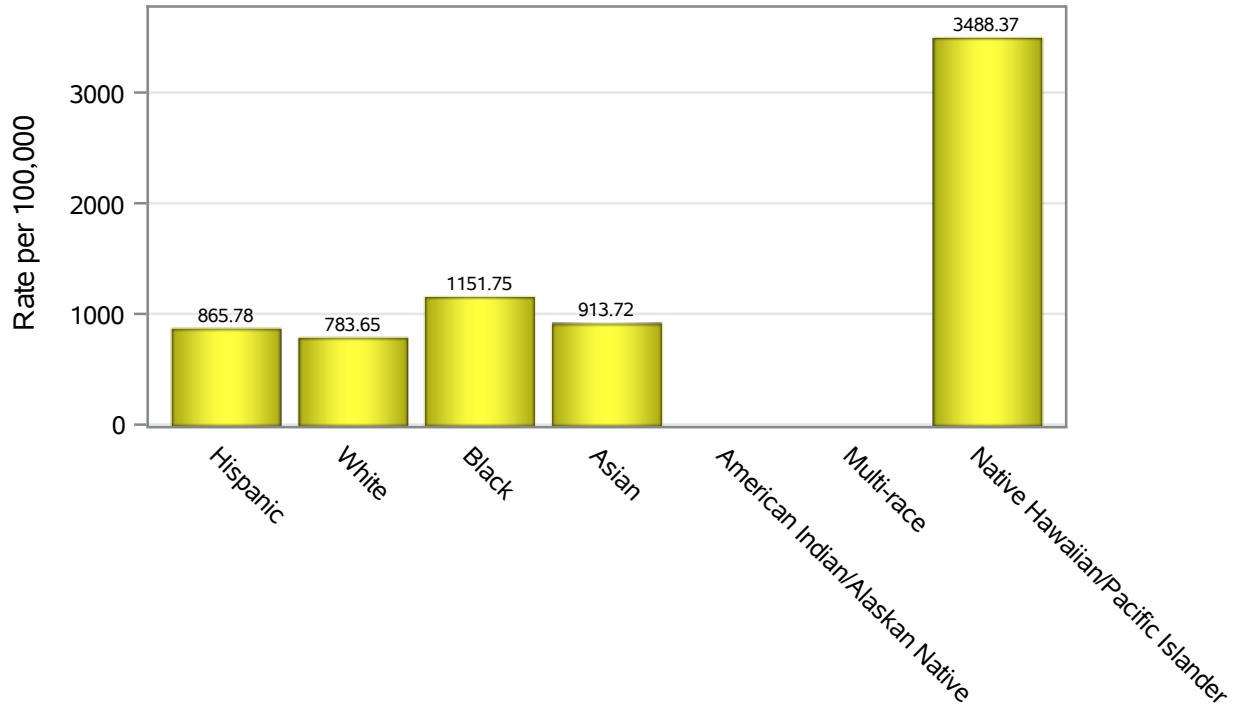


Investigations are ongoing; data are subject to change.

Reporting through 08SEP2021

North Las Vegas zip codes include 89030, 89031, 89032, 89033, 89036, 89081, 89084, 89085, 89086, 89087.

### Hospitalization Race/Ethnicity Rates in North Las Vegas

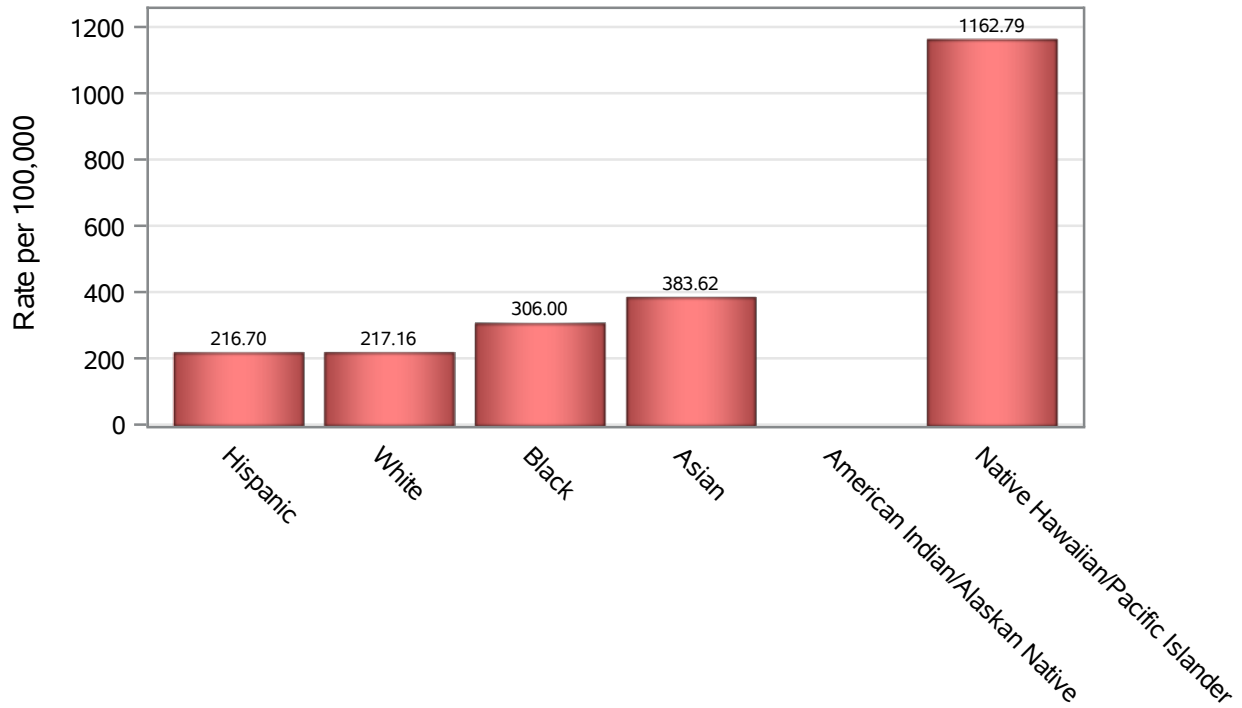


Investigations are ongoing; data are subject to change.

Reporting through 08SEP2021

North Las Vegas zip codes include 89030, 89031, 89032, 89033, 89036, 89081, 89084, 89085, 89086, 89087.

### Death Race/Ethnicity Rates in North Las Vegas



Investigations are ongoing; data are subject to change.

Reporting through 08SEP2021

North Las Vegas zip codes include 89030, 89031, 89032, 89033, 89036, 89081, 89084, 89085, 89086, 89087.

**Table 6: Race/Ethnicity and COVID19 in North Las Vegas**

Case Status	Race Ethnicity Categories	N	%	Population	Rate per 100,000
Cases	Hispanic	15218	42.4	96,445	15779
	White	5795	16.1	63,549	9118.9
	Black	5526	15.4	47,059	11743
	Asian	1488	4.1	14,337	10379
	American Indian/Alaskan Native	40	0.1	890	4494.4
	Multi-race	109	0.3	9,719	1121.5
	Native Hawaiian/Pacific Islander	435	1.2	1,376	31613
	Unknown	7306	20.3	.	.
Hospitalizations	Hispanic	835	37.8	96,445	865.78
	White	498	22.5	63,549	783.65
	Black	542	24.5	47,059	1151.7
	Asian	131	5.9	14,337	913.72
	American Indian/Alaskan Native	8	0.4	890	.
	Multi-race	5	0.2	9,719	.
	Native Hawaiian/Pacific Islander	48	2.2	1,376	3488.4
	Unknown	144	6.5	.	.
Deaths	Hispanic	209	36.6	96,445	216.70
	White	138	24.2	63,549	217.16
	Black	144	25.2	47,059	306.00
	Asian	55	9.6	14,337	383.62
	American Indian/Alaskan Native	4	0.7	890	.
	Native Hawaiian/Pacific Islander	16	2.8	1,376	1162.8
	Unknown	5	0.9	.	.

Note1: Population data source for calculating rate estimates: U.S. Census Bureau, ACS 5-year estimate.

Note2: Rates for categories with fewer than 12 cases are suppressed due to high relative standard error.

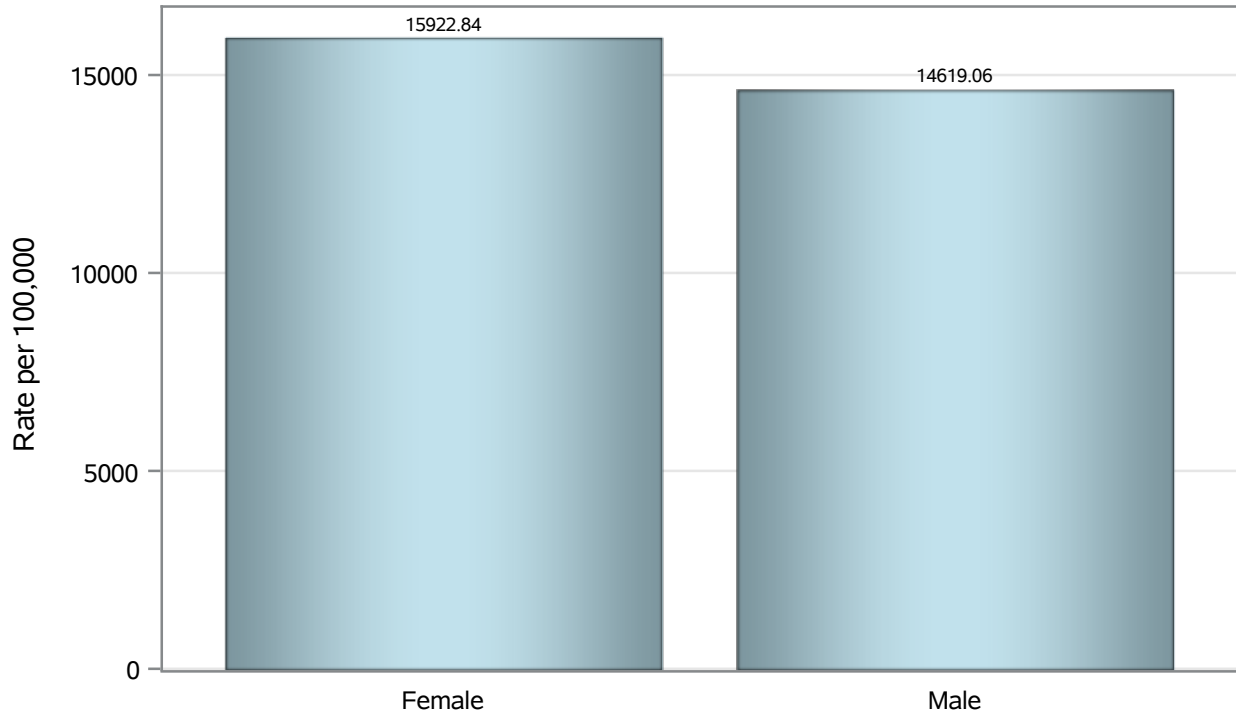
Note3: Hospitalizations are regardless of deceased status; Deaths are regardless of hospitalization status

**Investigations are ongoing; data are subject to change.  
Reporting through 08SEP2021**

**North Las Vegas zip codes include 89030, 89031, 89032, 89033, 89036, 89081, 89084, 89085, 89086, 89087.**



### Case Birth Sex Rates in North Las Vegas

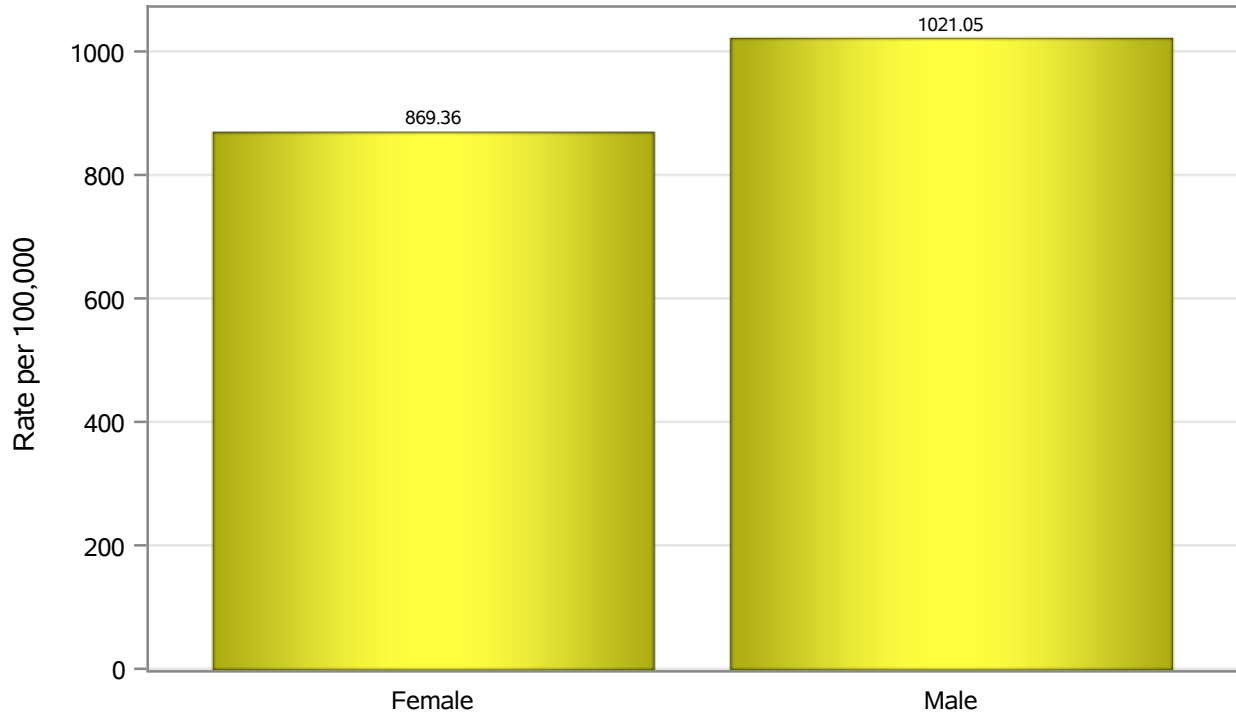


Investigations are ongoing; data are subject to change.

Reporting through 08SEP2021

North Las Vegas zip codes include 89030, 89031, 89032, 89033, 89036, 89081, 89084, 89085, 89086, 89087.

### Hospitalization Birth Sex Rates in North Las Vegas

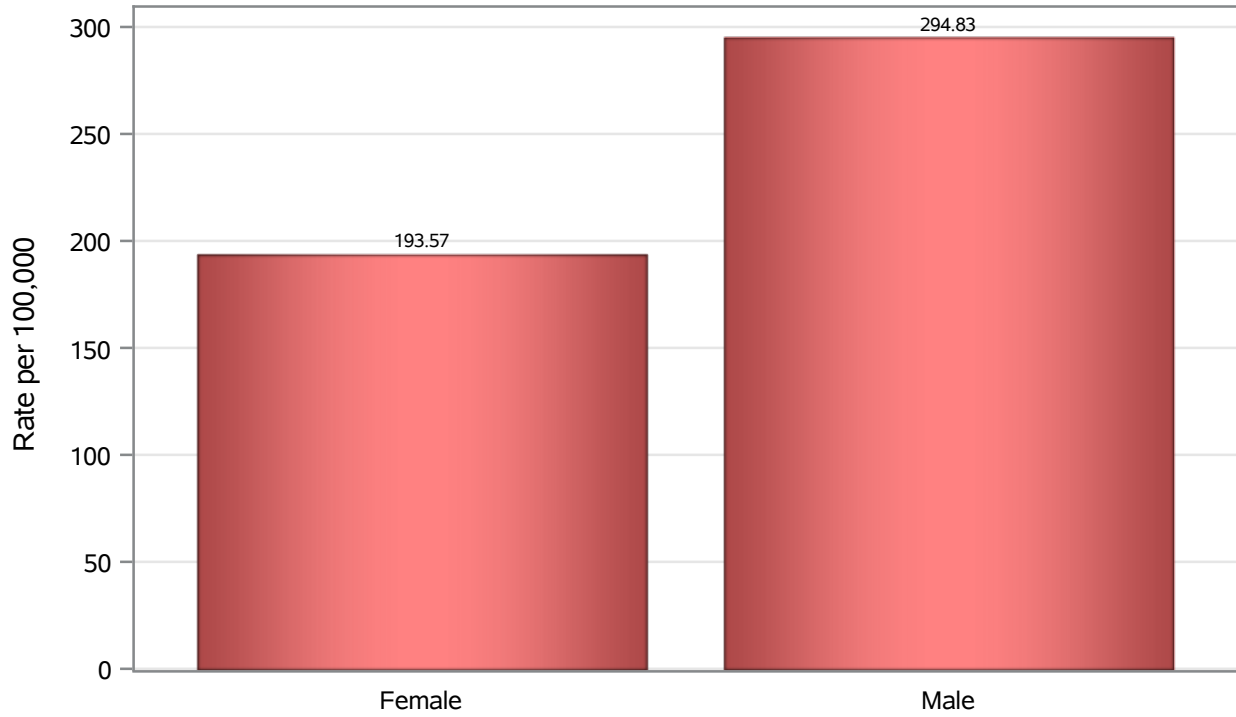


Investigations are ongoing; data are subject to change.

Reporting through 08SEP2021

North Las Vegas zip codes include 89030, 89031, 89032, 89033, 89036, 89081, 89084, 89085, 89086, 89087.

### Death Birth Sex Rates in North Las Vegas



Investigations are ongoing; data are subject to change.

Reporting through 08SEP2021

North Las Vegas zip codes include 89030, 89031, 89032, 89033, 89036, 89081, 89084, 89085, 89086, 89087.

**Table 7: Birth Sex and COVID19 in North Las Vegas**

Case Status	Birth Sex Categories	N	%	Population	Rate per 100,000
Cases	Female	18920	52.7	118823	15923
	Male	16809	46.8	114980	14619
	Unknown	188	0.5	.	.
Hospitalizations	Female	1033	46.7	118823	869.36
	Male	1174	53.1	114980	1021.0
	Unknown	4	0.2	.	.
Deaths	Female	230	40.3	118823	193.57
	Male	339	59.4	114980	294.83
	Unknown	2	0.4	.	.

Note1: Population data source for calculating rate estimates: U.S. Census Bureau, ACS 5-year estimate.

Note2: Rates for categories with fewer than 12 cases are suppressed due to high relative standard error.

Note3: Hospitalizations are regardless of deceased status; Deaths are regardless of hospitalization status

**Investigations are ongoing; data are subject to change.  
Reporting through 08SEP2021**

**North Las Vegas zip codes include 89030, 89031, 89032, 89033, 89036, 89081, 89084, 89085, 89086, 89087.**