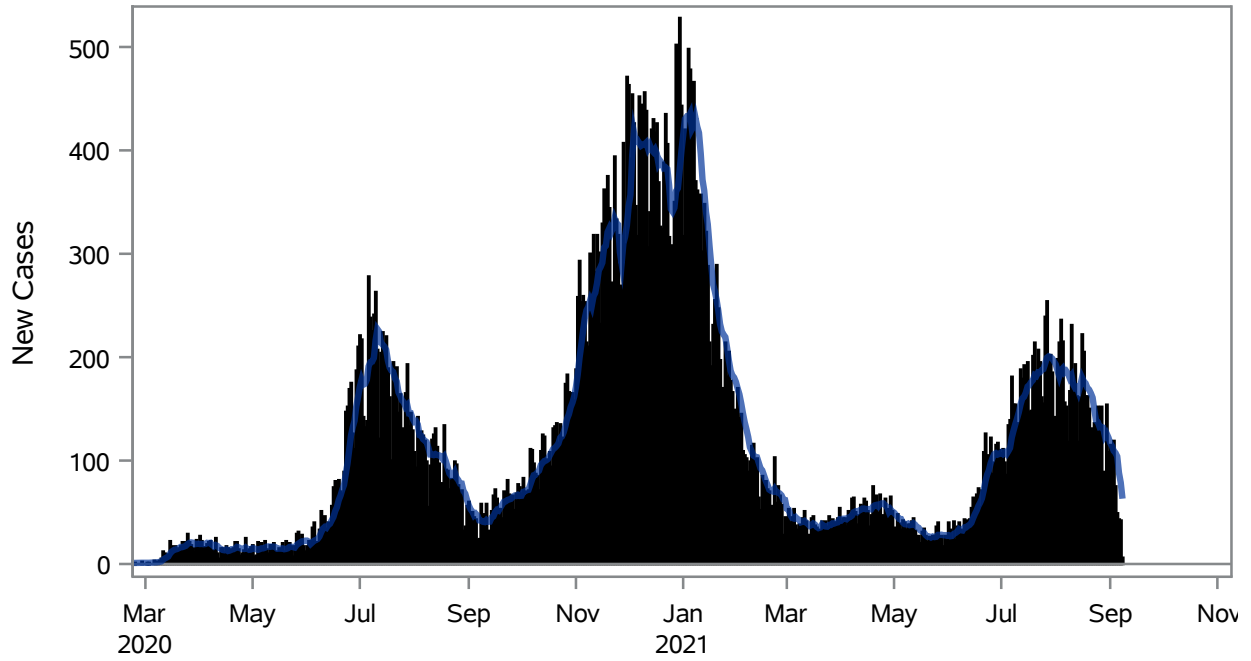


### COVID19 Cases for Henderson, 7-Day Moving Average



■ New Cases    — 7-Day Moving Average

Investigations are ongoing; data are subject to change.

Reporting through 08SEP2021

Henderson zip codes include 89002, 89011, 89012, 89014, 89015, 89044, 89052, 89074, 89119, 89120, 89122, 89123, 89124, 89183.

**Table 1: New COVID19 Cases and 7-Day Moving Average in Henderson, Previous Two Weeks**

Date (Daily)	New Cases	7-Day Moving Average
26AUG2021	128	132.29
27AUG2021	152	132.57
28AUG2021	89	131.86
29AUG2021	73	123.57
30AUG2021	154	126.14
31AUG2021	108	122.29
01SEP2021	115	117.00
02SEP2021	108	114.14
03SEP2021	119	109.43
04SEP2021	75	107.43
05SEP2021	49	104.00
06SEP2021	43	88.14

---

Note1: Event Date is calculated as follows based on completed information:  
1) Disease onset date 2) Disease diagnosis date 3) Lab result collection date 4) Report date to SNHD.

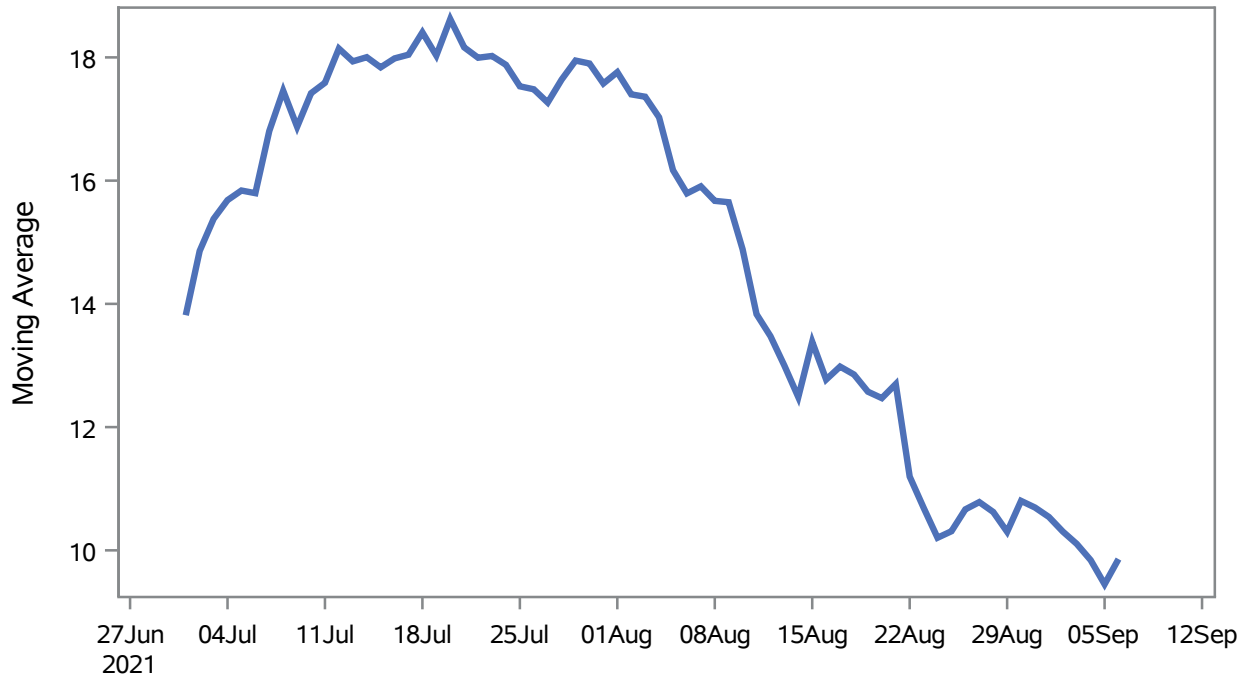
---

**Investigations are ongoing; data are subject to change.**

**Reporting through 08SEP2021**

**Henderson zip codes include 89002, 89011, 89012, 89014, 89015, 89044, 89052, 89074, 89119, 89120, 89122, 89123, 89124, 89183.**

### Percent of People Receiving COVID-19 Viral Tests Who Have Positive Results in Henderson



Investigations are ongoing; data are subject to change.

Reporting through 08SEP2021

Henderson zip codes include 89002, 89011, 89012, 89014, 89015, 89044, 89052, 89074, 89119, 89120, 89122, 89123, 89124, 89183.

**Table 2: Percent of People Receiving COVID-19 Viral Tests Who Have Positive Results in Henderson**

Collection Date	Positive	Negative	Equivocal	Total	% Positivity	7-Day Moving Average
23AUG2021	103	1444	4	1555	6.62	10.7
24AUG2021	118	1362		1488	7.93	10.2
25AUG2021	106	1043	2	1158	9.15	10.3
26AUG2021	109	847	2	966	11.28	10.7
27AUG2021	119	941	4	1076	11.06	10.8
28AUG2021	73	429		509	14.34	10.6
29AUG2021	54	406	1	461	11.71	10.3
30AUG2021	125	1102	2	1233	10.14	10.8
31AUG2021	85	1085	3	1185	7.17	10.7
01SEP2021	88	994	3	1089	8.08	10.5
02SEP2021	103	964	2	1070	9.63	10.3
03SEP2021	97	896	1	1004	9.66	10.1
04SEP2021	58	403		464	12.50	9.84
05SEP2021	34	342	1	379	8.97	9.45
06SEP2021	36	238		277	13.00	9.86

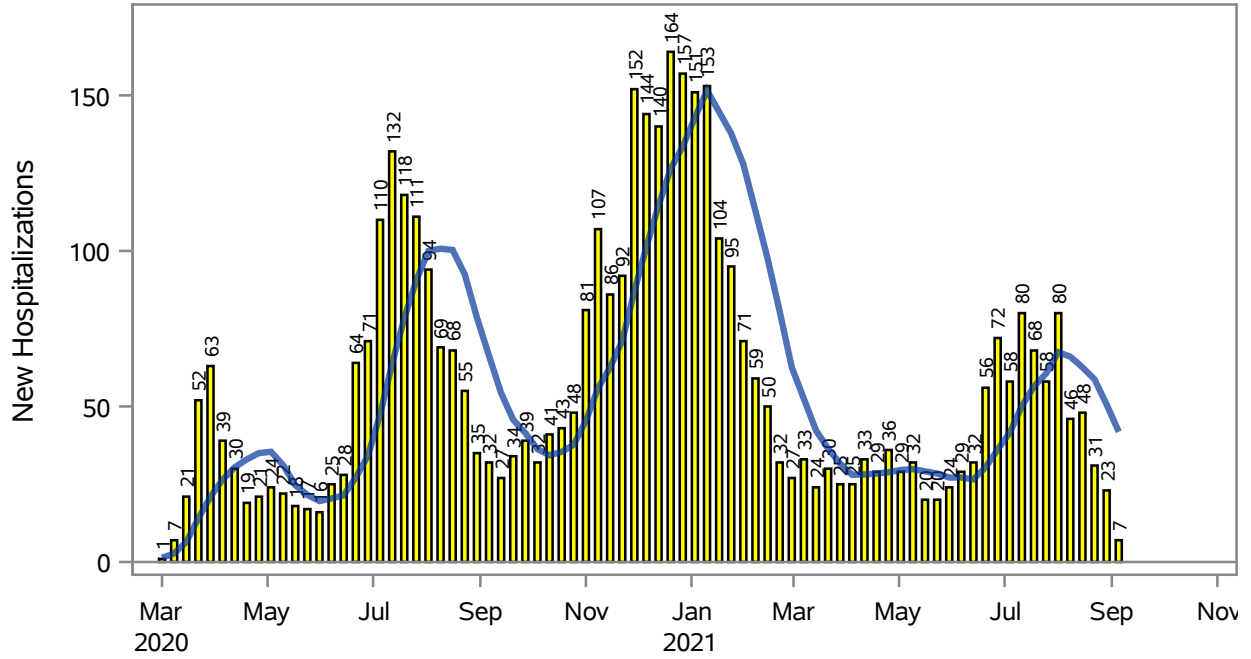
Note: Testing Data includes a 3 day delay

**Investigations are ongoing; data are subject to change.**

**Reporting through 08SEP2021**

**Henderson zip codes include 89002, 89011, 89012, 89014, 89015, 89044, 89052, 89074, 89119, 89120, 89122, 89123, 89124, 89183.**

### COVID19 Hospitalizations for Henderson, 7-Day Moving Average



Investigations are ongoing; data are subject to change.

Reporting through 08SEP2021

Henderson zip codes include 89002, 89011, 89012, 89014, 89015, 89044, 89052, 89074, 89119, 89120, 89122, 89123, 89124, 89183.

**Table 3: New COVID19-Related Hospitalizations and 7-Day Moving Average in Henderson, previous month**

Week	Hospitalizations	7-Day Moving Average
15AUG2021	48	62.6
22AUG2021	31	58.7
29AUG2021	23	50.6
05SEP2021	7	41.9

---

Note1: Admission Date is calculated as follows based on completed information:  
A) COVID19 Case is hospitalized B) COVID19 Case has a hospital admission date.

If admission date is missing, then the following is substituted temporarily, in order:  
1) Disease onset date 2) Disease diagnosis date 3) Lab result collection date 4) Report date to SNHD.

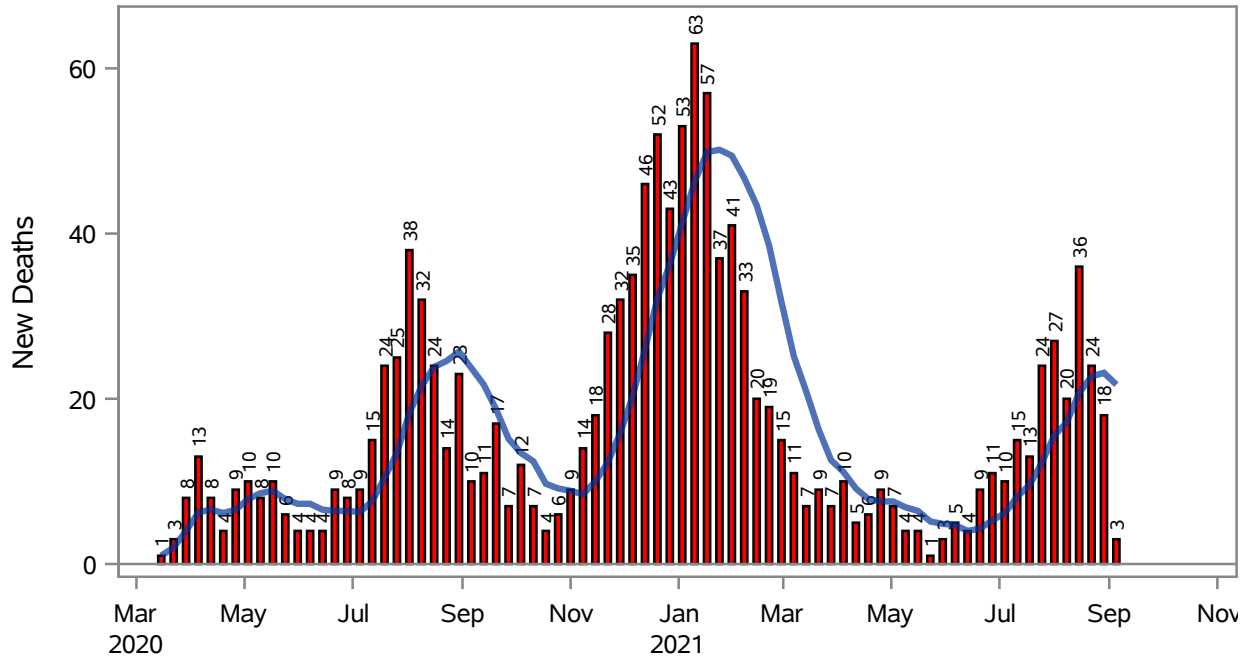
---

**Investigations are ongoing; data are subject to change.**

**Reporting through 08SEP2021**

**Henderson zip codes include 89002, 89011, 89012, 89014, 89015, 89044, 89052, 89074, 89119, 89120, 89122, 89123, 89124, 89183.**

### COVID19 Deaths for Henderson, 7-Day Moving Average



■ New Deaths    — 7-Day Moving Average

Investigations are ongoing; data are subject to change.

Reporting through 08SEP2021

Henderson zip codes include 89002, 89011, 89012, 89014, 89015, 89044, 89052, 89074, 89119, 89120, 89122, 89123, 89124, 89183.

**Table 4: New COVID19-Related Deaths and 7-Day Moving Average in Henderson, Previous Month**

Week	Deaths	7-Day Moving Average
15AUG2021	36	20.7
22AUG2021	24	22.7
29AUG2021	18	23.1
05SEP2021	3	21.7

---

Note1: Date of Death is calculated as follows based on completed information:  
A) COVID19 Case is reported as deceased B) COVID19 Case has a reported date of death.

If date of death is missing, then the following is substituted temporarily, in order:  
1) Disease onset date 2) Disease diagnosis date  
3) Lab result collection date 4) Report date to SNHD.

---

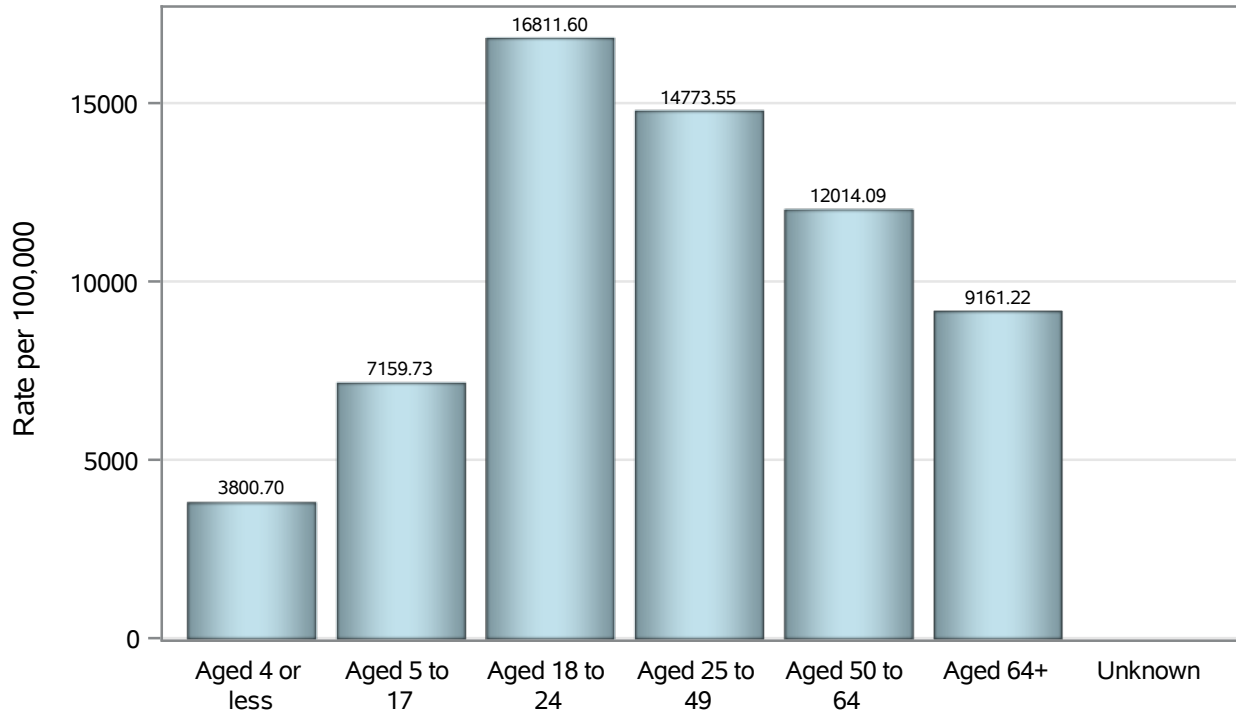
**Investigations are ongoing; data are subject to change.**

**Reporting through 08SEP2021**

**Henderson zip codes include 89002, 89011, 89012, 89014, 89015, 89044, 89052, 89074, 89119, 89120, 89122, 89123, 89124, 89183.**



### Case Age Rates in Henderson

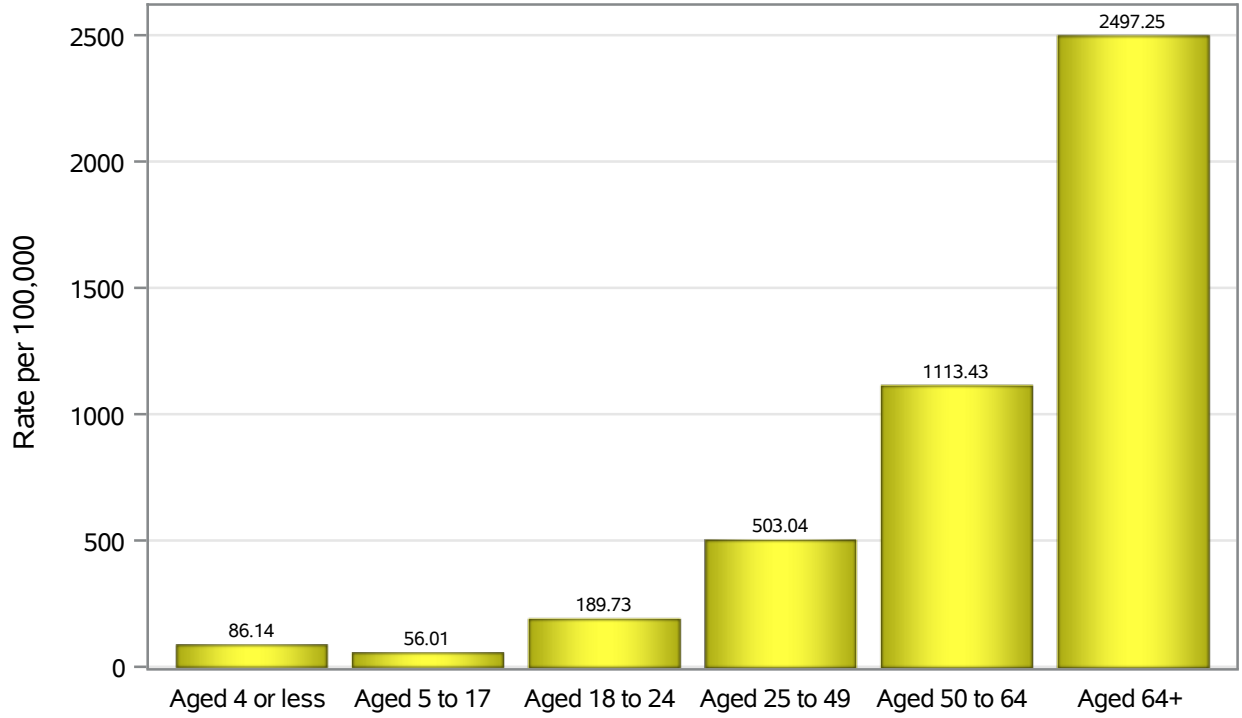


Investigations are ongoing; data are subject to change.

Reporting through 08SEP2021

Henderson zip codes include 89002, 89011, 89012, 89014, 89015, 89044, 89052, 89074, 89119, 89120, 89122, 89123, 89124, 89183.

### Hospitalization Age Rates in Henderson

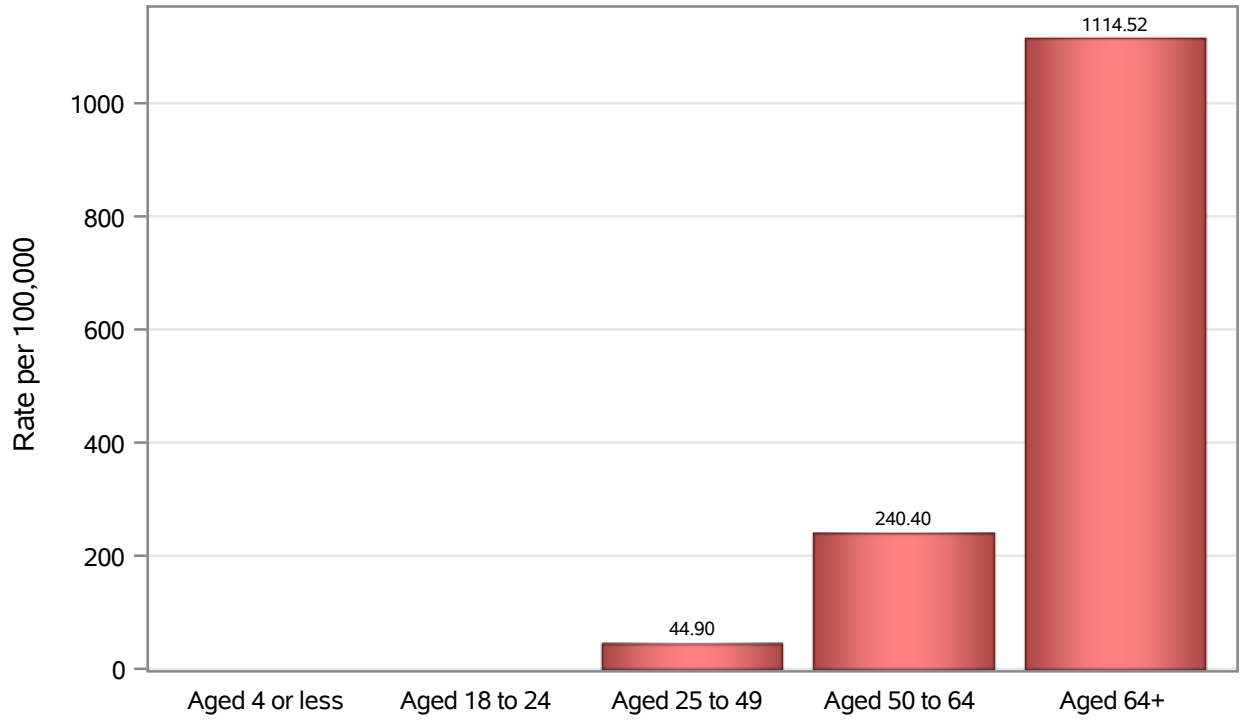


Investigations are ongoing; data are subject to change.

Reporting through 08SEP2021

Henderson zip codes include 89002, 89011, 89012, 89014, 89015, 89044, 89052, 89074, 89119, 89120, 89122, 89123, 89124, 89183.

### Death Age Rates in Henderson



Investigations are ongoing; data are subject to change.

Reporting through 08SEP2021

Henderson zip codes include 89002, 89011, 89012, 89014, 89015, 89044, 89052, 89074, 89119, 89120, 89122, 89123, 89124, 89183.

**Table 5: Age and COVID19 in Henderson**

Case Status	Age Categories	N	%	Population	Rate per 100,000
Cases	Aged 4 or less	1103	1.8	29,021	3800.7
	Aged 5 to 17	5880	9.4	82,126	7159.7
	Aged 18 to 24	7443	11.9	44,273	16812
	Aged 25 to 49	27636	44.3	187064	14774
	Aged 50 to 64	12344	19.8	102746	12014
	Aged 64+	7924	12.7	86,495	9161.2
	Unknown	12	0.0	.	.
Hospitalizations	Aged 4 or less	25	0.6	29,021	86.14
	Aged 5 to 17	46	1.0	82,126	56.01
	Aged 18 to 24	84	1.9	44,273	189.73
	Aged 25 to 49	941	21.4	187064	503.04
	Aged 50 to 64	1144	26.0	102746	1113.4
	Aged 64+	2160	49.1	86,495	2497.3
	Deaths	Aged 4 or less	1	0.1	29,021
Aged 18 to 24		1	0.1	44,273	.
Aged 25 to 49		84	6.5	187064	44.90
Aged 50 to 64		247	19.0	102746	240.40
Aged 64+		964	74.3	86,495	1114.5

Note1: Population data source for calculating rate estimates: U.S. Census Bureau, ACS 5-year estimate.

Note2: Rates for categories with fewer than 12 cases are suppressed due to high relative standard error.

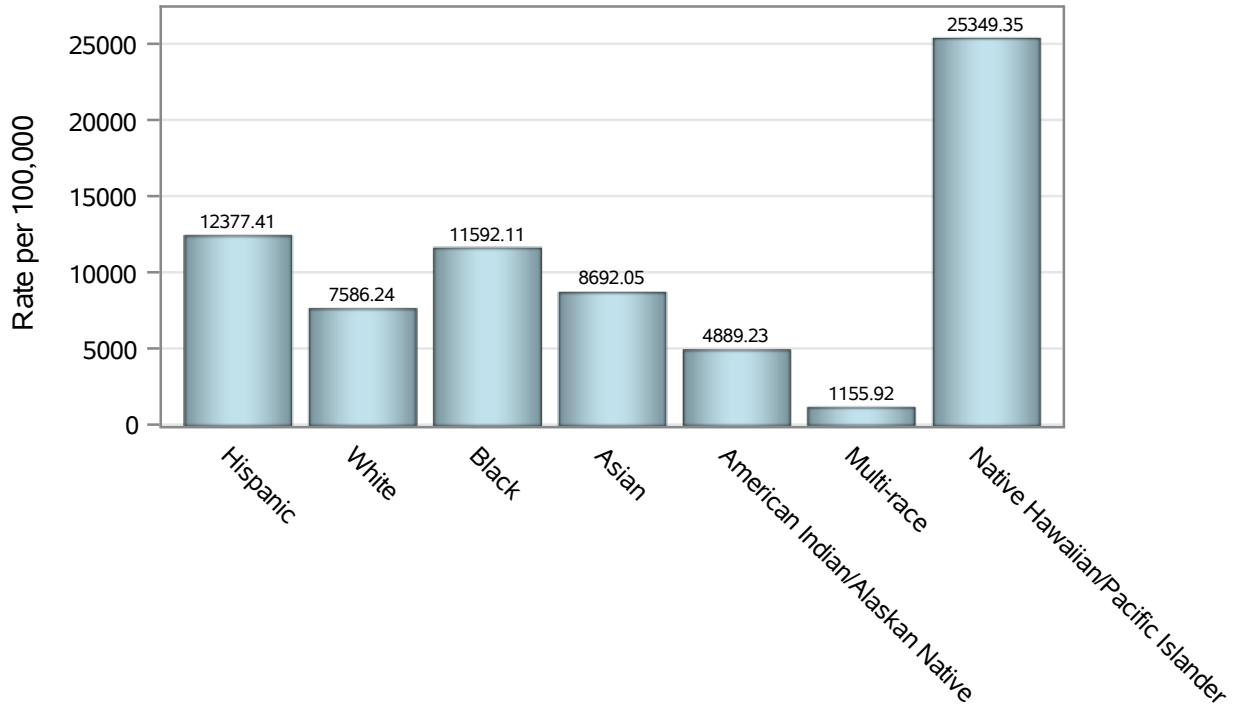
Note3: Hospitalizations are regardless of deceased status; Deaths are regardless of hospitalization status

**Investigations are ongoing; data are subject to change.**

**Reporting through 08SEP2021**

**Henderson zip codes include 89002, 89011, 89012, 89014, 89015, 89044, 89052, 89074, 89119, 89120, 89122, 89123, 89124, 89183.**

### Case Race/Ethnicity Rates in Henderson

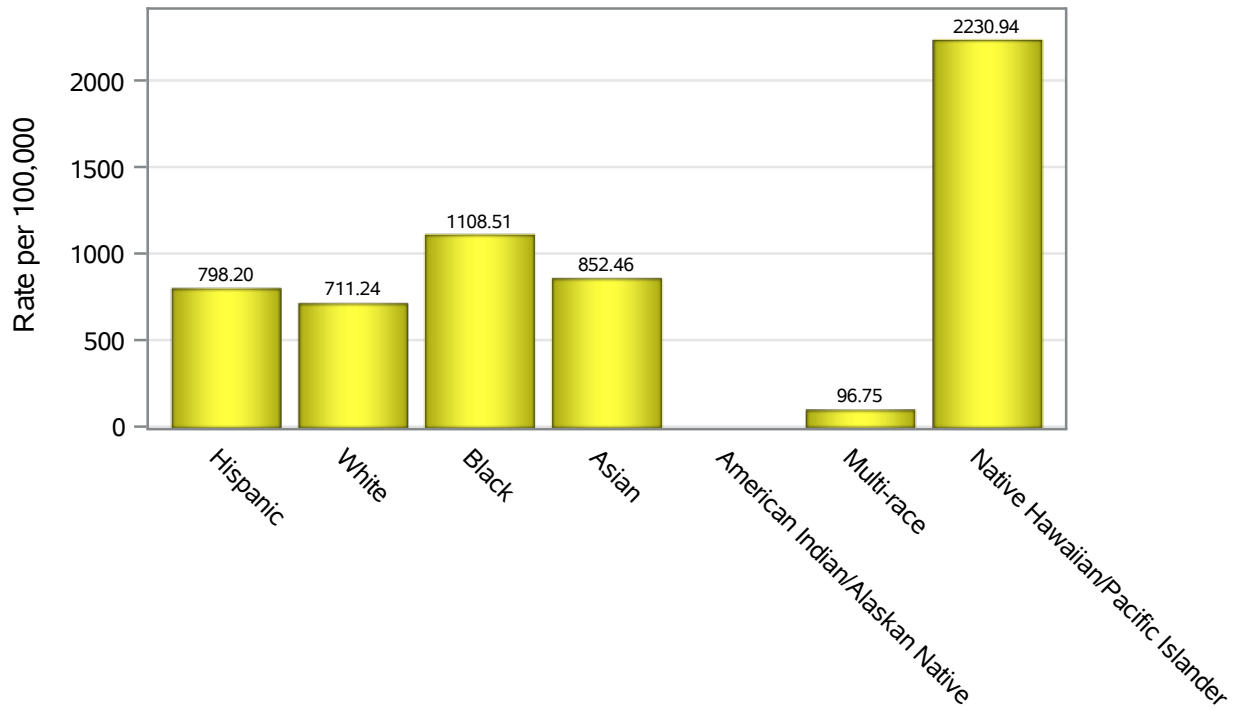


Investigations are ongoing; data are subject to change.

Reporting through 08SEP2021

Henderson zip codes include 89002, 89011, 89012, 89014, 89015, 89044, 89052, 89074, 89119, 89120, 89122, 89123, 89124, 89183.

### Hospitalization Race/Ethnicity Rates in Henderson

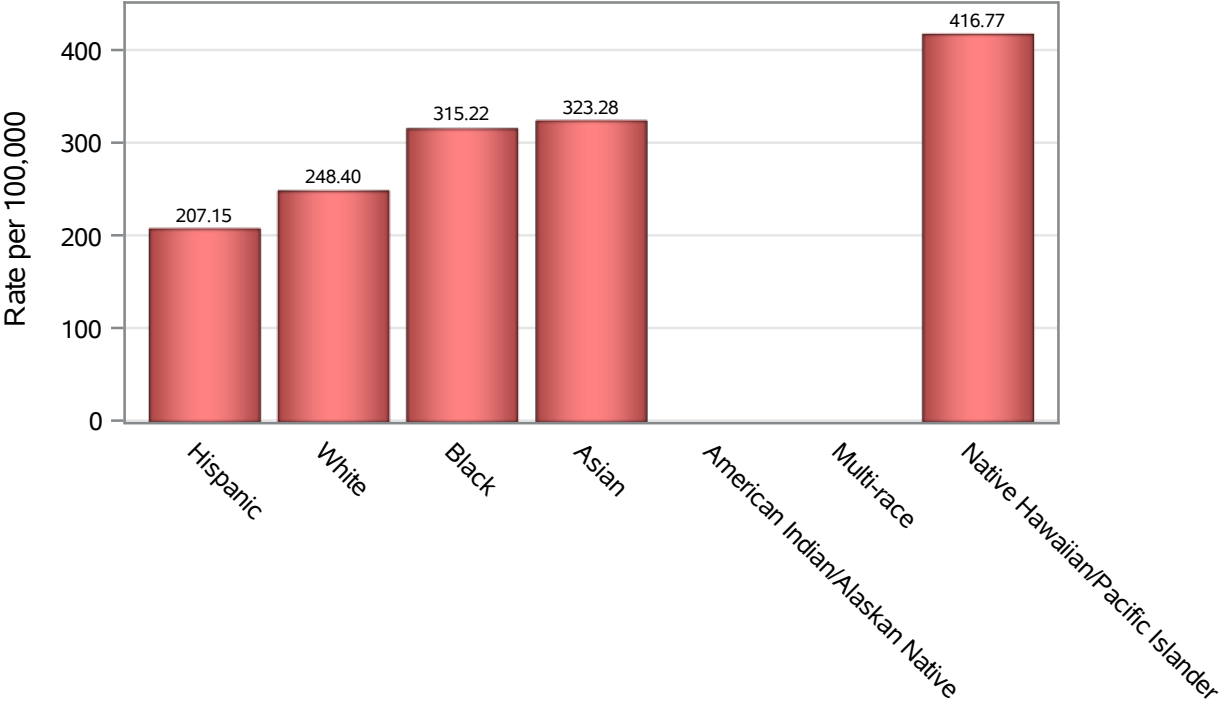


Investigations are ongoing; data are subject to change.

Reporting through 08SEP2021

Henderson zip codes include 89002, 89011, 89012, 89014, 89015, 89044, 89052, 89074, 89119, 89120, 89122, 89123, 89124, 89183.

### Death Race/Ethnicity Rates in Henderson



Investigations are ongoing; data are subject to change.

Reporting through 08SEP2021

Henderson zip codes include 89002, 89011, 89012, 89014, 89015, 89044, 89052, 89074, 89119, 89120, 89122, 89123, 89124, 89183.

**Table 6: Race/Ethnicity and COVID19 in Henderson**

Case Status	Race Ethnicity Categories	N	%	Population	Rate per 100,000
Cases	Hispanic	15057	24.2	121649	12377
	White	22111	35.5	291462	7586.2
	Black	4413	7.1	38,069	11592
	Asian	4517	7.2	51,967	8692.1
	American Indian/Alaskan Native	128	0.2	2,618	4889.2
	Multi-race	227	0.4	19,638	1155.9
	Native Hawaiian/Pacific Islander	1034	1.7	4,079	25349
	Unknown	14855	23.8	.	.
Hospitalizations	Hispanic	971	22.1	121649	798.20
	White	2073	47.1	291462	711.24
	Black	422	9.6	38,069	1108.5
	Asian	443	10.1	51,967	852.46
	American Indian/Alaskan Native	6	0.1	2,618	.
	Multi-race	19	0.4	19,638	96.75
	Native Hawaiian/Pacific Islander	91	2.1	4,079	2230.9
	Unknown	375	8.5	.	.
Deaths	Hispanic	252	19.4	121649	207.15
	White	724	55.8	291462	248.40
	Black	120	9.3	38,069	315.22
	Asian	168	13.0	51,967	323.28
	American Indian/Alaskan Native	2	0.2	2,618	.
	Multi-race	6	0.5	19,638	.
	Native Hawaiian/Pacific Islander	17	1.3	4,079	416.77
	Unknown	8	0.6	.	.

Note1: Population data source for calculating rate estimates: U.S. Census Bureau, ACS 5-year estimate.

Note2: Rates for categories with fewer than 12 cases are suppressed due to high relative standard error.

Note3: Hospitalizations are regardless of deceased status; Deaths are regardless of hospitalization status

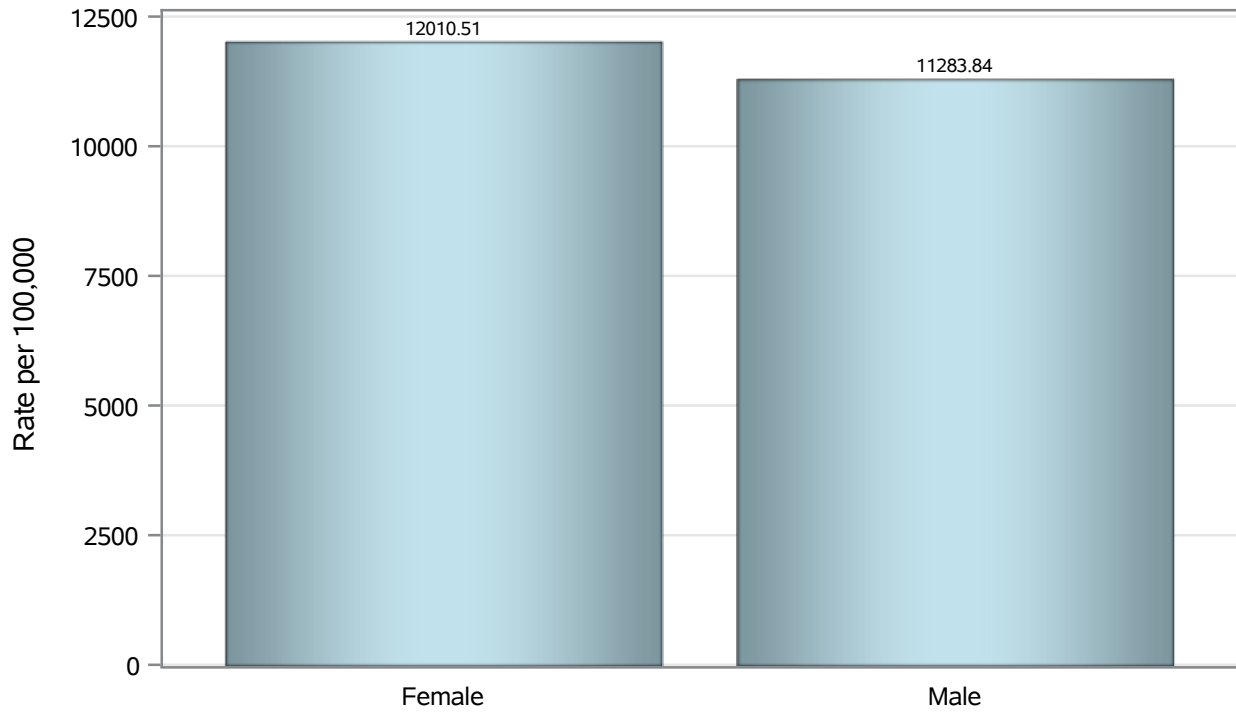
**Investigations are ongoing; data are subject to change.**

**Reporting through 08SEP2021**

**Henderson zip codes include 89002, 89011, 89012, 89014, 89015, 89044, 89052, 89074, 89119, 89120, 89122, 89123, 89124, 89183.**



### Case Birth Sex Rates in Henderson

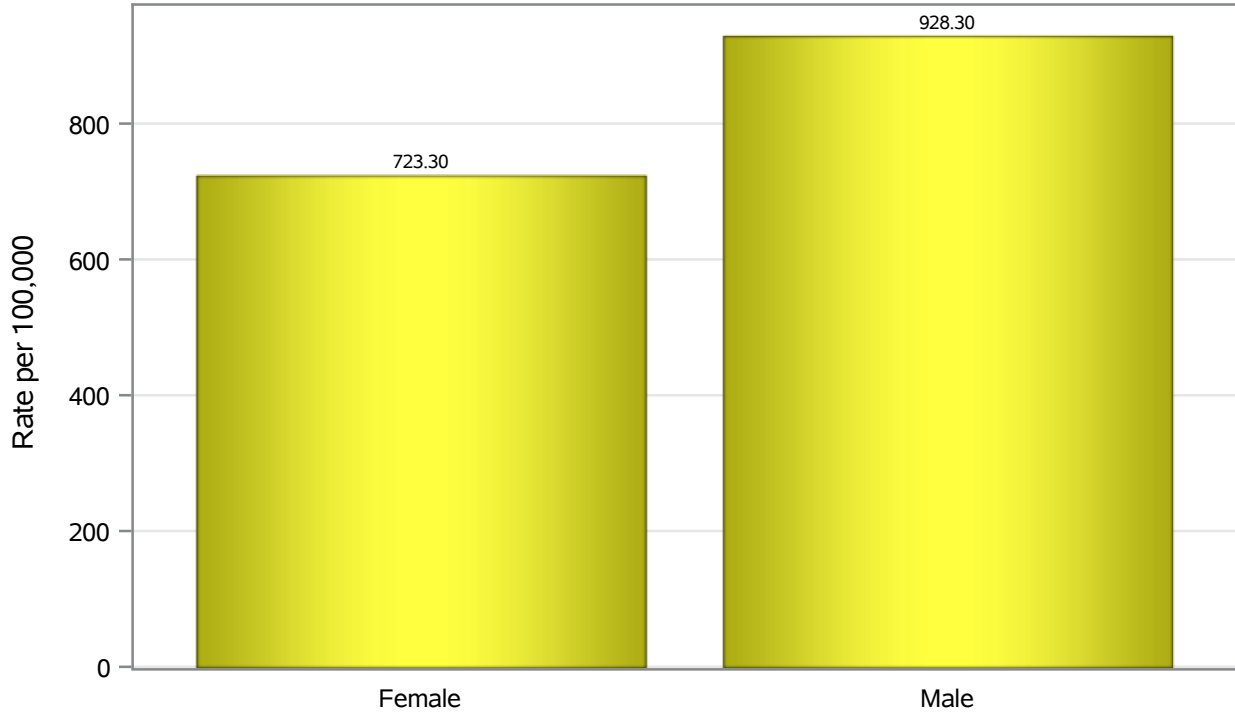


Investigations are ongoing; data are subject to change.

Reporting through 08SEP2021

Henderson zip codes include 89002, 89011, 89012, 89014, 89015, 89044, 89052, 89074, 89119, 89120, 89122, 89123, 89124, 89183.

### Hospitalization Birth Sex Rates in Henderson

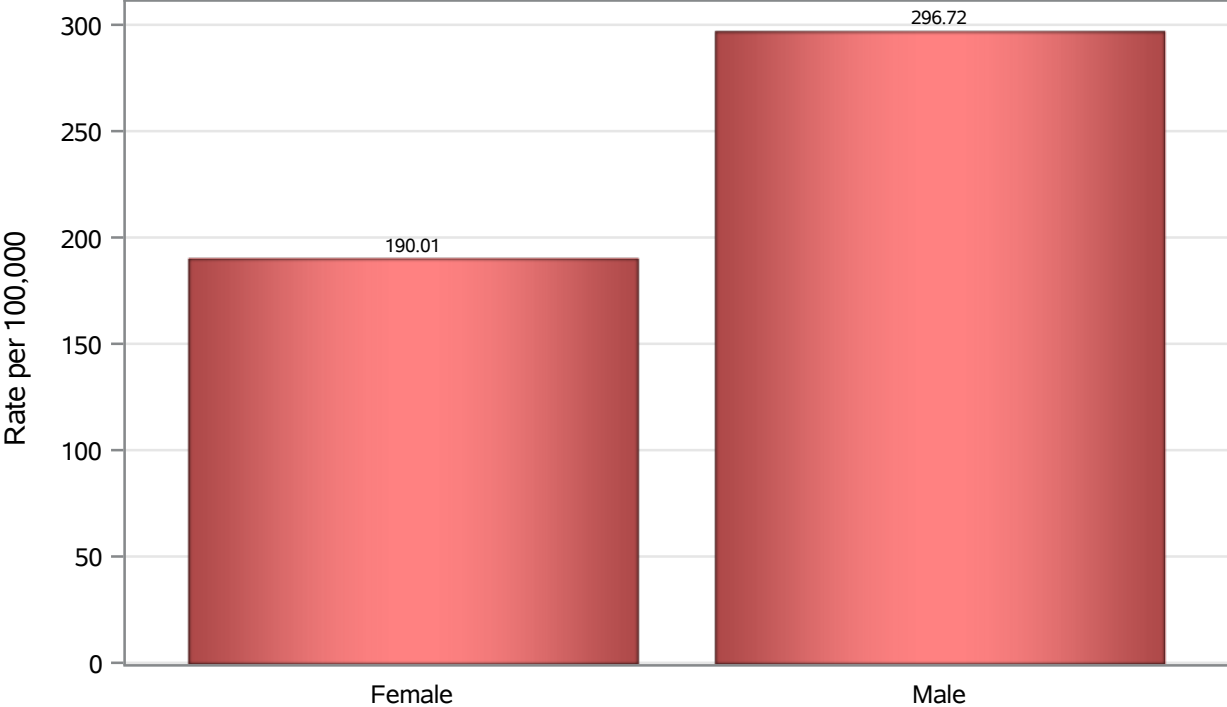


Investigations are ongoing; data are subject to change.

Reporting through 08SEP2021

Henderson zip codes include 89002, 89011, 89012, 89014, 89015, 89044, 89052, 89074, 89119, 89120, 89122, 89123, 89124, 89183.

### Death Birth Sex Rates in Henderson



Investigations are ongoing; data are subject to change.

Reporting through 08SEP2021

Henderson zip codes include 89002, 89011, 89012, 89014, 89015, 89044, 89052, 89074, 89119, 89120, 89122, 89123, 89124, 89183.

**Table 7: Birth Sex and COVID19 in Henderson**

Case Status	Birth Sex Categories	N	%	Population	Rate per 100,000
Cases	Female	32048	51.4	266833	12011
	Male	29890	47.9	264892	11284
	Unknown	404	0.6	.	.
Hospitalizations	Female	1930	43.9	266833	723.30
	Male	2459	55.9	264892	928.30
	Unknown	11	0.3	.	.
Deaths	Female	507	39.1	266833	190.01
	Male	786	60.6	264892	296.72
	Unknown	4	0.3	.	.

Note1: Population data source for calculating rate estimates: U.S. Census Bureau, ACS 5-year estimate.

Note2: Rates for categories with fewer than 12 cases are suppressed due to high relative standard error.

Note3: Hospitalizations are regardless of deceased status; Deaths are regardless of hospitalization status

**Investigations are ongoing; data are subject to change.**

**Reporting through 08SEP2021**

**Henderson zip codes include 89002, 89011, 89012, 89014, 89015, 89044, 89052, 89074, 89119, 89120, 89122, 89123, 89124, 89183.**