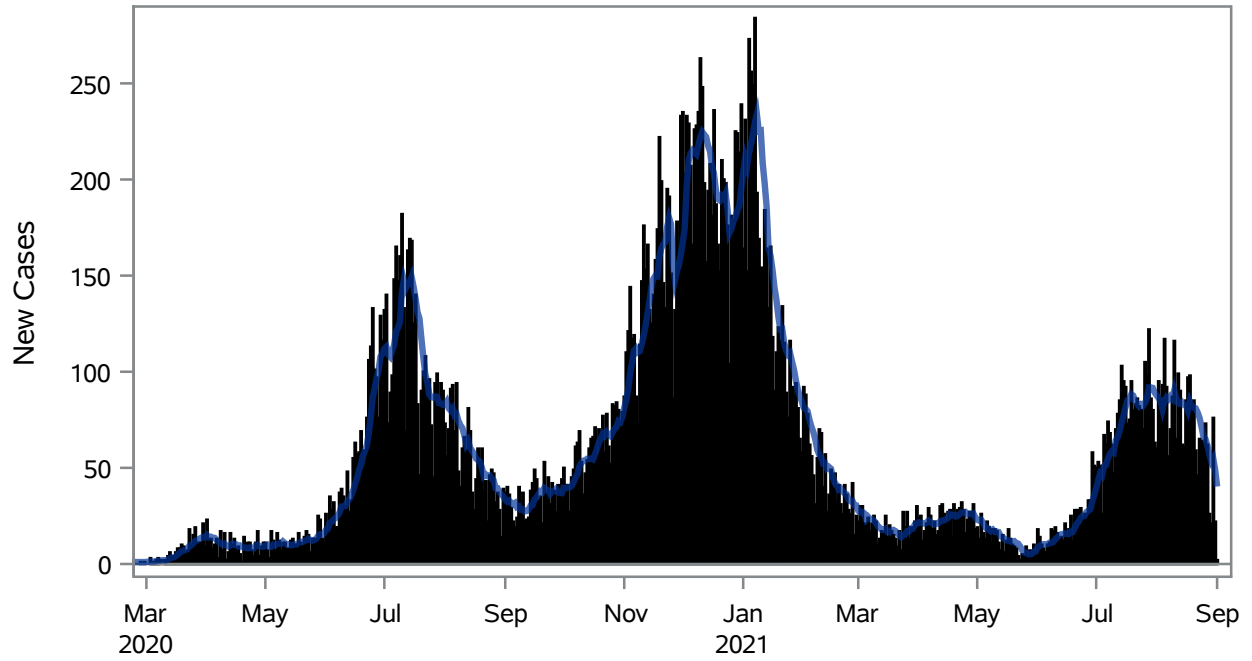


COVID19 Cases for North Las Vegas, 7-Day Moving Average



■ New Cases — 7-Day Moving Average

Investigations are ongoing; data are subject to change.

Reporting through 01SEP2021

North Las Vegas zip codes include 89030, 89031, 89032, 89033, 89036, 89081, 89184, 89085, 89086, 89087.

Table 1: New COVID19 Cases and 7-Day Moving Average in North Las Vegas, Previous Two Weeks

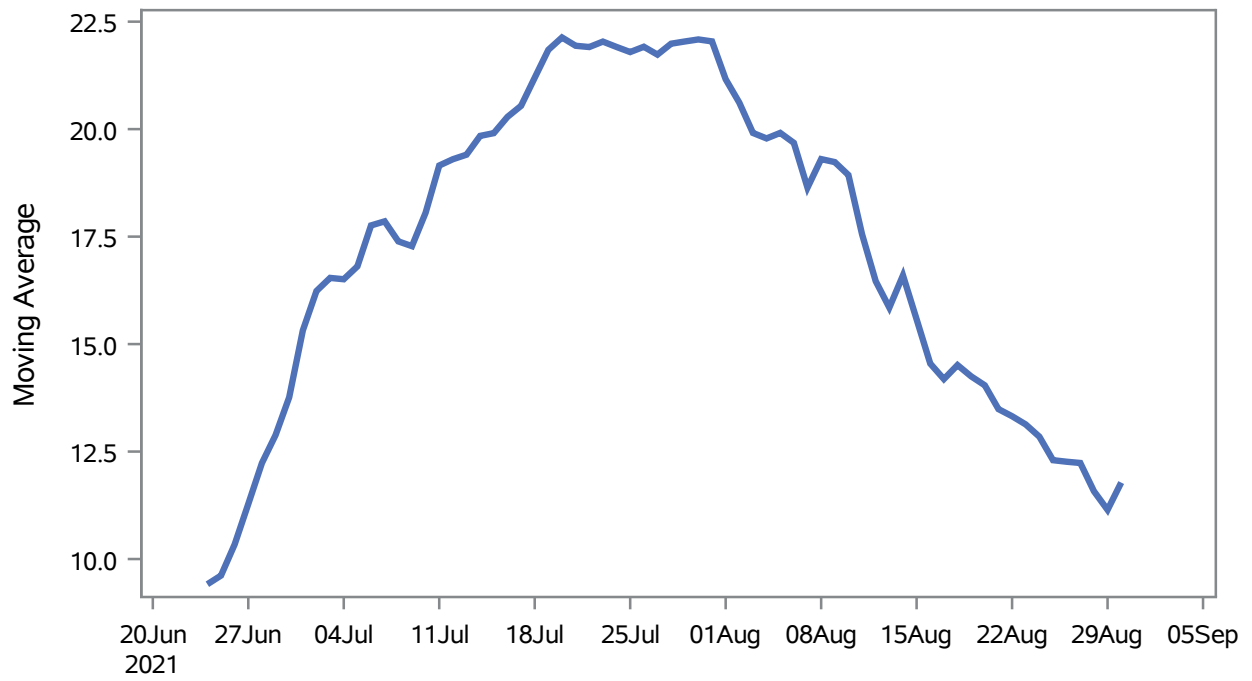
| Date (Daily) | New Cases | 7-Day Moving Average |
|--------------|-----------|----------------------|
| 19AUG2021 | 82 | 82.14 |
| 20AUG2021 | 85 | 81.43 |
| 21AUG2021 | 59 | 81.00 |
| 22AUG2021 | 46 | 78.86 |
| 23AUG2021 | 65 | 76.00 |
| 24AUG2021 | 64 | 71.29 |
| 25AUG2021 | 63 | 66.29 |
| 26AUG2021 | 73 | 65.00 |
| 27AUG2021 | 62 | 61.71 |
| 28AUG2021 | 26 | 57.00 |
| 29AUG2021 | 21 | 53.43 |
| 30AUG2021 | 76 | 55.00 |

Note1: Event Date is calculated as follows based on completed information:
1) Disease onset date 2) Disease diagnosis date 3) Lab result collection date 4) Report date to SNHD.

**Investigations are ongoing; data are subject to change.
Reporting through 01SEP2021**

North Las Vegas zip codes include 89030, 89031, 89032, 89033, 89036, 89081, 89184, 89085, 89086, 89087.

Percent of People Receiving COVID-19 Viral Tests Who Have Positive Results in North Las Vegas



Investigations are ongoing; data are subject to change.

Reporting through 01SEP2021

North Las Vegas zip codes include 89030, 89031, 89032, 89033, 89036, 89081, 89184, 89085, 89086, 89087.

Table 2: Percent of People Receiving COVID-19 Viral Tests Who Have Positive Results in North Las Vegas

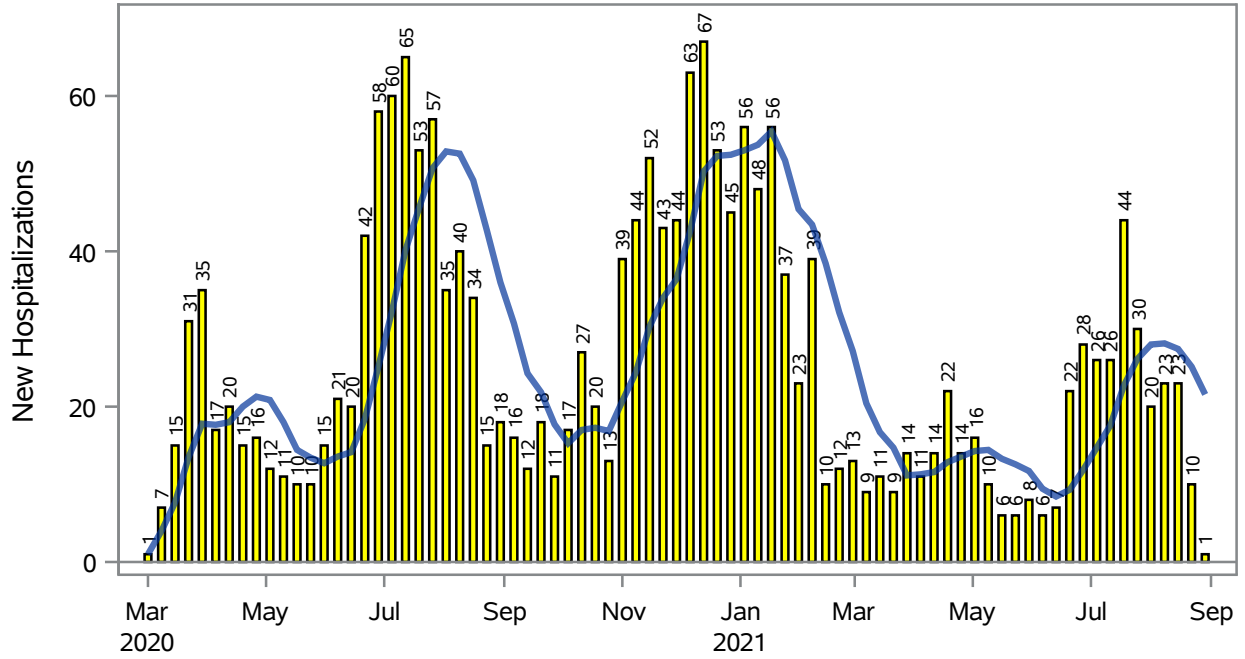
| Collection Date | Positive | Negative | Equivocal | Total | % Positivity | 7-Day Moving Average |
|-----------------|----------|----------|-----------|-------|--------------|----------------------|
| 16AUG2021 | 115 | 1022 | 3 | 1143 | 10.06 | 14.5 |
| 17AUG2021 | 123 | 950 | 1 | 1081 | 11.38 | 14.2 |
| 18AUG2021 | 145 | 973 | 2 | 1123 | 12.91 | 14.5 |
| 19AUG2021 | 124 | 953 | 2 | 1081 | 11.47 | 14.2 |
| 20AUG2021 | 131 | 840 | 3 | 981 | 13.35 | 14.0 |
| 21AUG2021 | 90 | 422 | | 512 | 17.58 | 13.5 |
| 22AUG2021 | 83 | 418 | 2 | 503 | 16.50 | 13.3 |
| 23AUG2021 | 118 | 1232 | 3 | 1353 | 8.72 | 13.1 |
| 24AUG2021 | 124 | 1190 | 3 | 1321 | 9.39 | 12.8 |
| 25AUG2021 | 102 | 1015 | 2 | 1123 | 9.08 | 12.3 |
| 26AUG2021 | 112 | 886 | | 998 | 11.22 | 12.3 |
| 27AUG2021 | 114 | 742 | 2 | 867 | 13.15 | 12.2 |
| 28AUG2021 | 57 | 376 | | 439 | 12.98 | 11.6 |
| 29AUG2021 | 51 | 328 | | 379 | 13.46 | 11.1 |
| 30AUG2021 | 125 | 818 | 2 | 949 | 13.17 | 11.8 |

Note: Testing Data includes a 3 day delay

**Investigations are ongoing; data are subject to change.
Reporting through 01SEP2021**

North Las Vegas zip codes include 89030, 89031, 89032, 89033, 89036, 89081, 89184, 89085, 89086, 89087.

COVID19 Hospitalizations for North Las Vegas, 7-Day Moving Average



■ New Hospitalizations — 7-Day Moving Average

Investigations are ongoing; data are subject to change.

Reporting through 01SEP2021

North Las Vegas zip codes include 89030, 89031, 89032, 89033, 89036, 89081, 89184, 89085, 89086, 89087.

Table 3: New COVID19-Related Hospitalizations and 7-Day Moving Average in North Las Vegas, previous month

| Week | Hospitalizations | 7-Day Moving Average |
|-----------|------------------|----------------------|
| 08AUG2021 | 23 | 28.1 |
| 15AUG2021 | 23 | 27.4 |
| 22AUG2021 | 10 | 25.1 |
| 29AUG2021 | 1 | 21.6 |

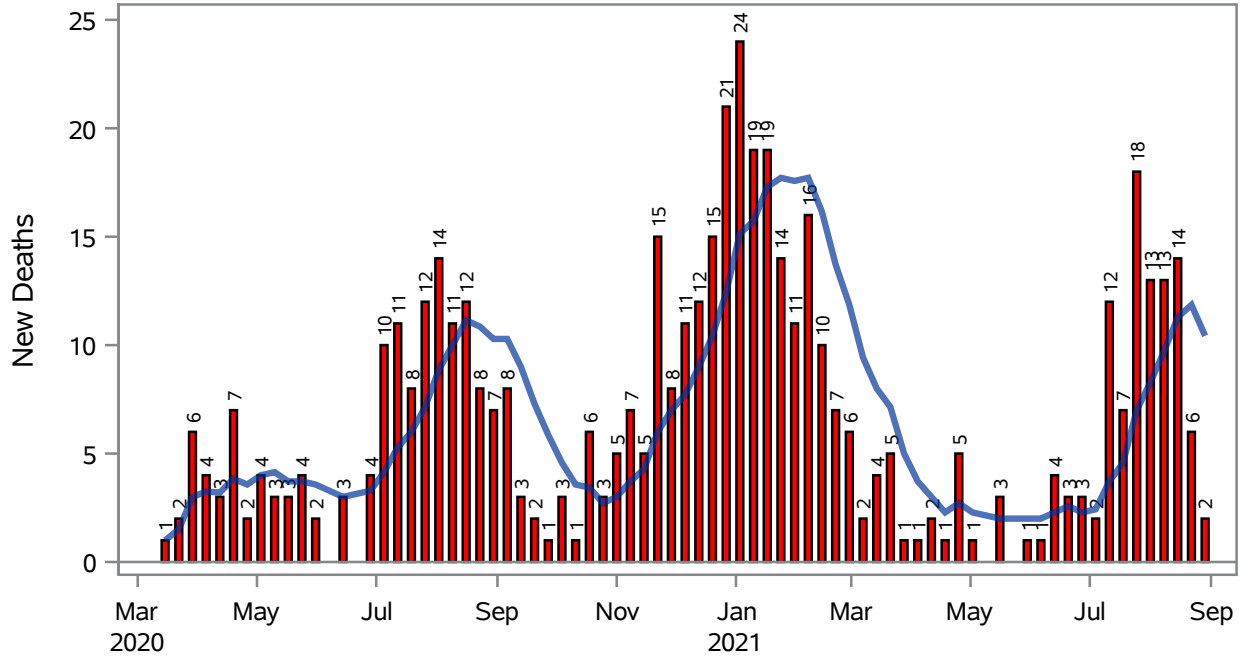
Note1: Admission Date is calculated as follows based on completed information:
A) COVID19 Case is hospitalized B) COVID19 Case has a hospital admission date.

If admission date is missing, then the following is substituted temporarily, in order:
1) Disease onset date 2) Disease diagnosis date 3) Lab result collection date 4) Report date to SNHD.

**Investigations are ongoing; data are subject to change.
Reporting through 01SEP2021**

North Las Vegas zip codes include 89030, 89031, 89032, 89033, 89036, 89081, 89184, 89085, 89086, 89087.

COVID19 Deaths for North Las Vegas, 7-Day Moving Average



■ New Deaths — 7-Day Moving Average

Investigations are ongoing; data are subject to change.
Reporting through 01SEP2021

North Las Vegas zip codes include 89030, 89031, 89032, 89033, 89036, 89081, 89184, 89085, 89086, 89087.

Table 4: New COVID19-Related Deaths and 7-Day Moving Average in North Las Vegas, Previous Month

| Week | Deaths | 7-Day Moving Average |
|-----------|--------|----------------------|
| 08AUG2021 | 13 | 9.71 |
| 15AUG2021 | 14 | 11.3 |
| 22AUG2021 | 6 | 11.9 |
| 29AUG2021 | 2 | 10.4 |

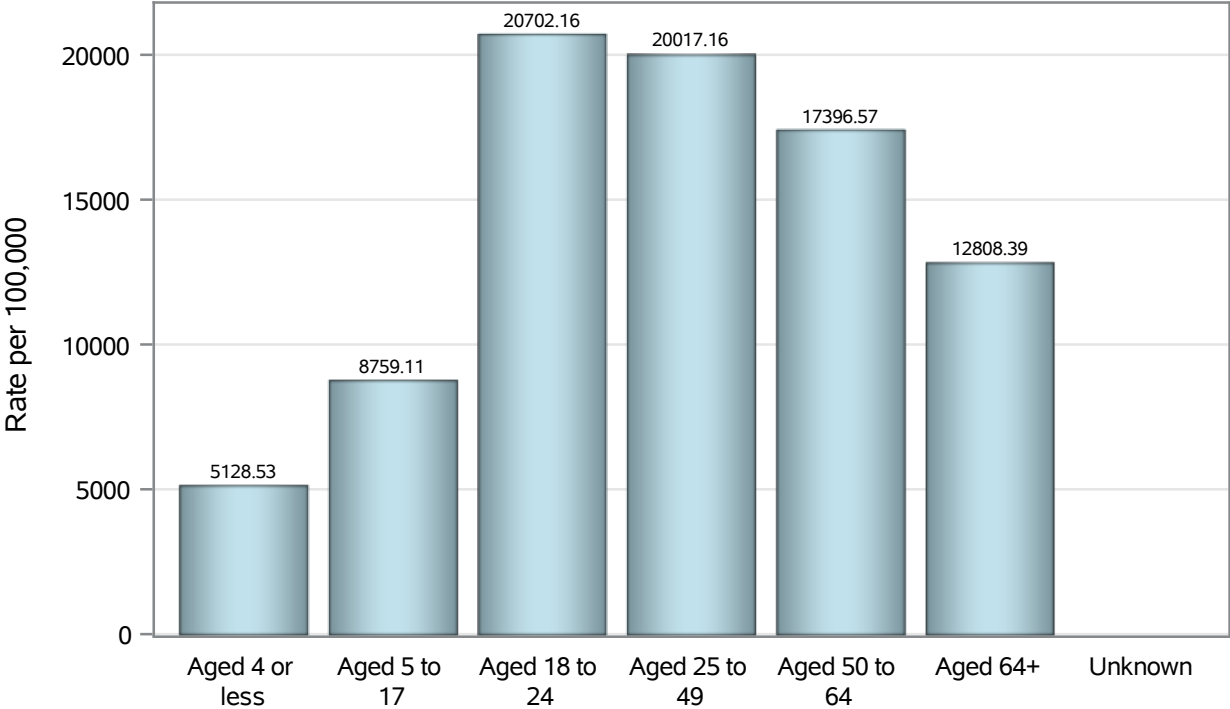
Note1: Date of Death is calculated as follows based on completed information:
A) COVID19 Case is reported as deceased B) COVID19 Case has a reported date of death.

If date of death is missing, then the following is substituted temporarily, in order:
1) Disease onset date 2) Disease diagnosis date
3) Lab result collection date 4) Report date to SNHD.

**Investigations are ongoing; data are subject to change.
Reporting through 01SEP2021**

North Las Vegas zip codes include 89030, 89031, 89032, 89033, 89036, 89081, 89184, 89085, 89086, 89087.

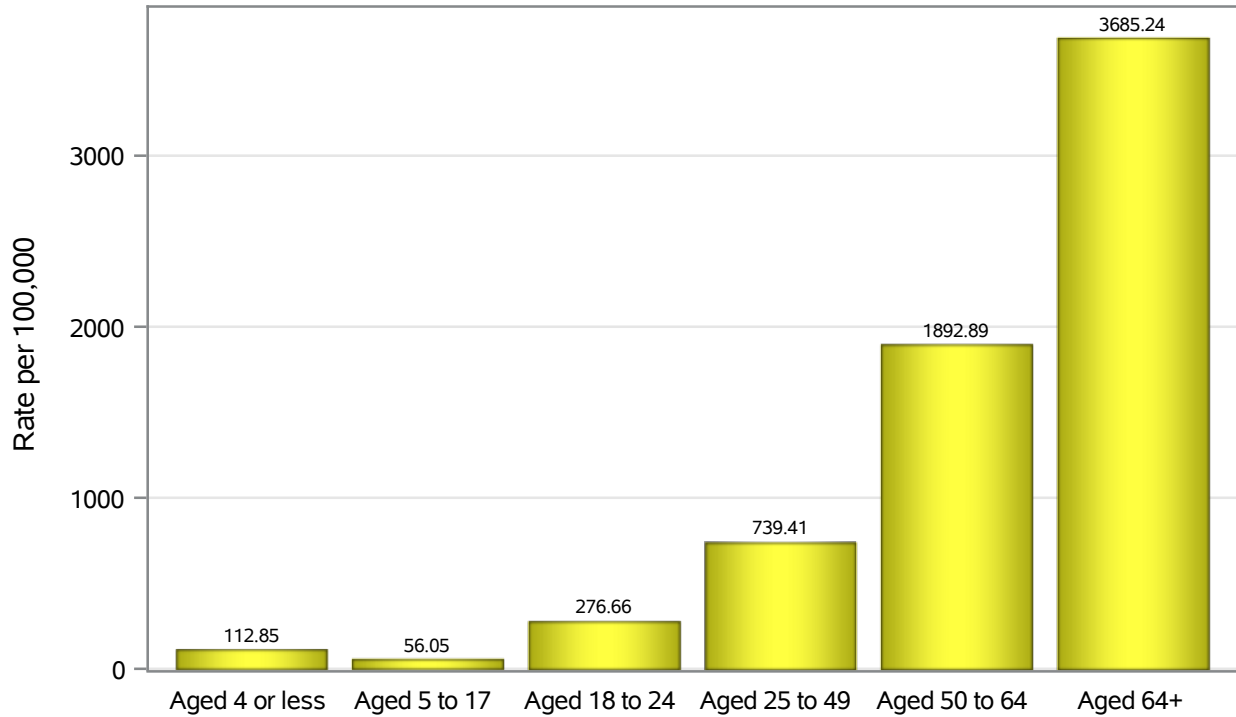
Case Age Rates in North Las Vegas



Investigations are ongoing; data are subject to change.
Reporting through 01SEP2021

North Las Vegas zip codes include 89030, 89031, 89032, 89033, 89036, 89081, 89184, 89085, 89086, 89087.

Hospitalization Age Rates in North Las Vegas

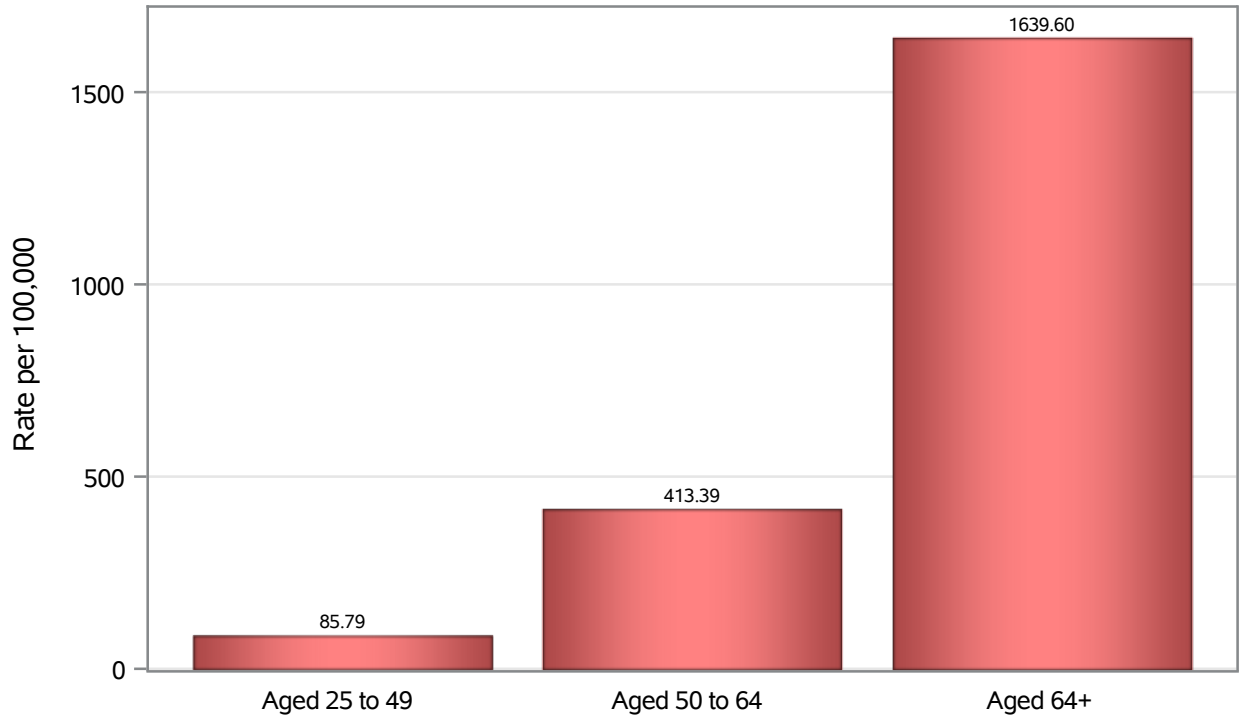


Investigations are ongoing; data are subject to change.

Reporting through 01SEP2021

North Las Vegas zip codes include 89030, 89031, 89032, 89033, 89036, 89081, 89184, 89085, 89086, 89087.

Death Age Rates in North Las Vegas



Investigations are ongoing; data are subject to change.

Reporting through 01SEP2021

North Las Vegas zip codes include 89030, 89031, 89032, 89033, 89036, 89081, 89184, 89085, 89086, 89087.

Table 5: Age and COVID19 in North Las Vegas

| Case Status | Age Categories | N | % | Population | Rate per 100,000 |
|------------------|----------------|-------|------|------------|------------------|
| Cases | Aged 4 or less | 818 | 2.6 | 15,950 | 5128.5 |
| | Aged 5 to 17 | 3907 | 12.3 | 44,605 | 8759.1 |
| | Aged 18 to 24 | 4340 | 13.6 | 20,964 | 20702 |
| | Aged 25 to 49 | 14700 | 46.1 | 73,437 | 20017 |
| | Aged 50 to 64 | 5597 | 17.6 | 32,173 | 17397 |
| | Aged 64+ | 2492 | 7.8 | 19,456 | 12808 |
| | Unknown | 5 | 0.0 | . | . |
| Hospitalizations | Aged 4 or less | 18 | 0.9 | 15,950 | 112.85 |
| | Aged 5 to 17 | 25 | 1.3 | 44,605 | 56.05 |
| | Aged 18 to 24 | 58 | 2.9 | 20,964 | 276.66 |
| | Aged 25 to 49 | 543 | 27.6 | 73,437 | 739.41 |
| | Aged 50 to 64 | 609 | 30.9 | 32,173 | 1892.9 |
| | Aged 64+ | 717 | 36.4 | 19,456 | 3685.2 |
| Deaths | Aged 25 to 49 | 63 | 12.2 | 73,437 | 85.79 |
| | Aged 50 to 64 | 133 | 25.8 | 32,173 | 413.39 |
| | Aged 64+ | 319 | 61.9 | 19,456 | 1639.6 |

Note1: Population data source for calculating rate estimates: U.S. Census Bureau, ACS 5-year estimate.

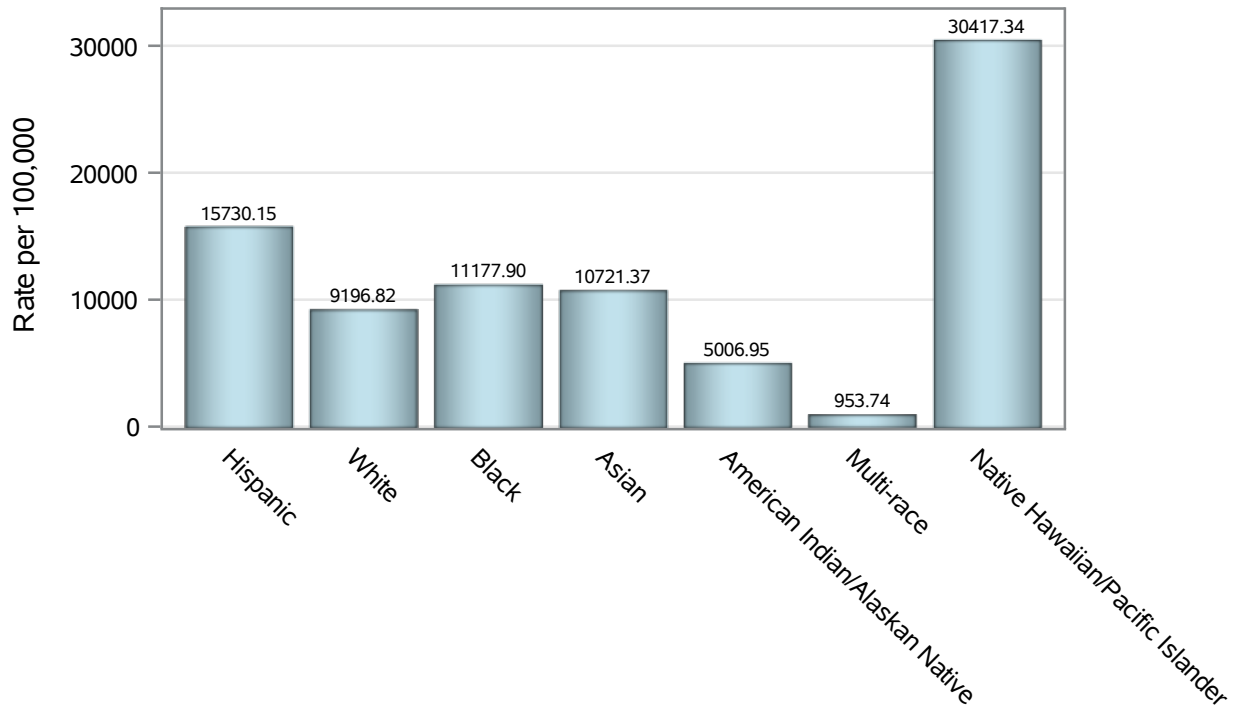
Note2: Rates for categories with fewer than 12 cases are suppressed due to high relative standard error.

Note3: Hospitalizations are regardless of deceased status; Deaths are regardless of hospitalization status

**Investigations are ongoing; data are subject to change.
Reporting through 01SEP2021**

North Las Vegas zip codes include 89030, 89031, 89032, 89033, 89036, 89081, 89184, 89085, 89086, 89087.

Case Race/Ethnicity Rates in North Las Vegas

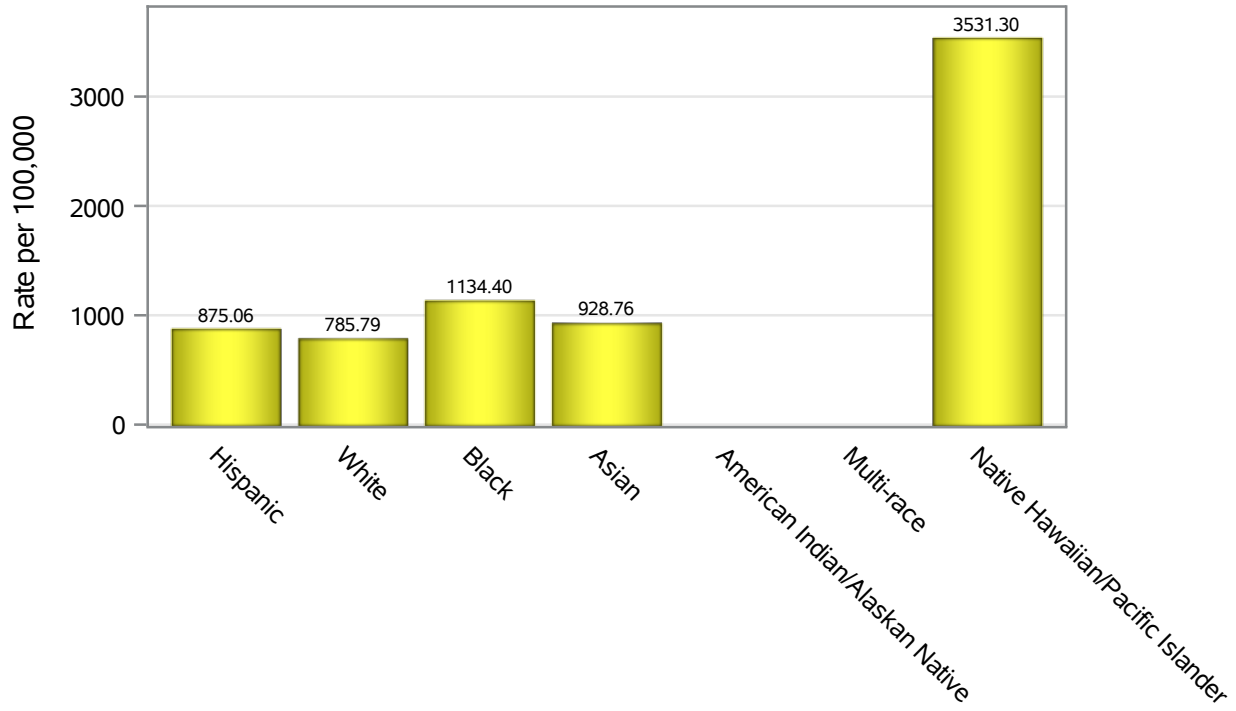


Investigations are ongoing; data are subject to change.

Reporting through 01SEP2021

North Las Vegas zip codes include 89030, 89031, 89032, 89033, 89036, 89081, 89184, 89085, 89086, 89087.

Hospitalization Race/Ethnicity Rates in North Las Vegas

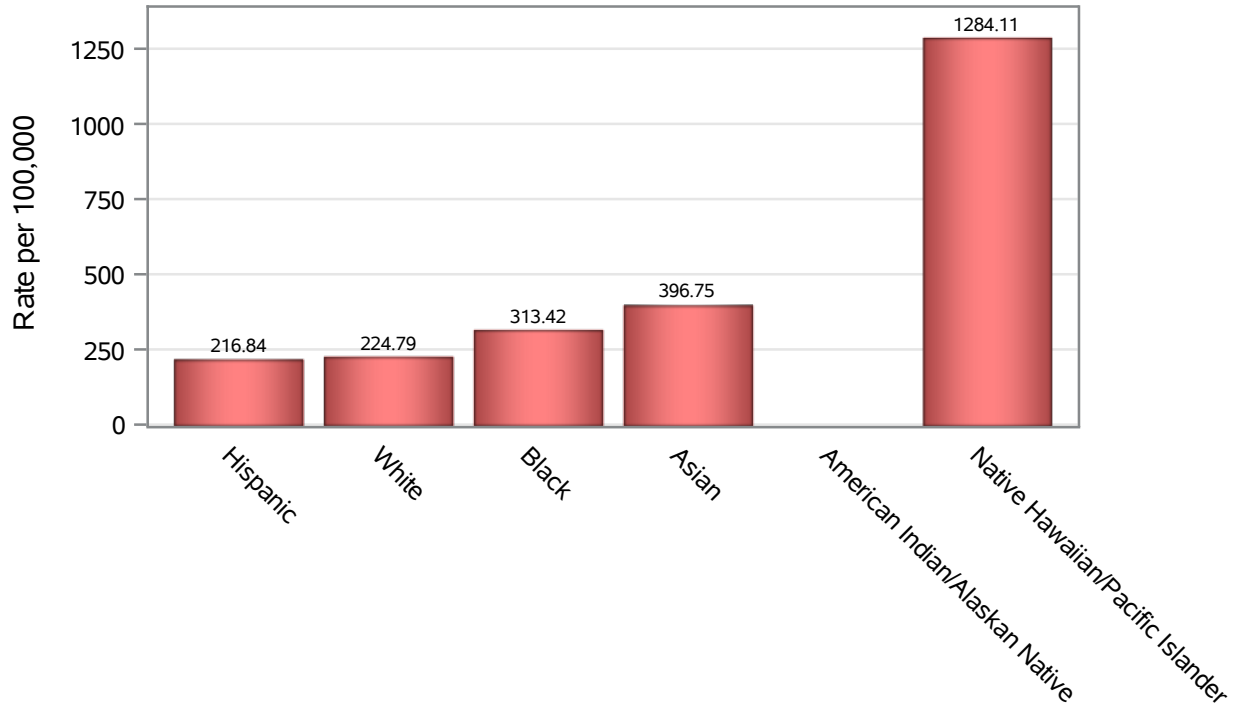


Investigations are ongoing; data are subject to change.

Reporting through 01SEP2021

North Las Vegas zip codes include 89030, 89031, 89032, 89033, 89036, 89081, 89184, 89085, 89086, 89087.

Death Race/Ethnicity Rates in North Las Vegas



Investigations are ongoing; data are subject to change.

Reporting through 01SEP2021

North Las Vegas zip codes include 89030, 89031, 89032, 89033, 89036, 89081, 89184, 89085, 89086, 89087.

Table 6: Race/Ethnicity and COVID19 in North Las Vegas

| Case Status | Race Ethnicity Categories | N | % | Population | Rate per 100,000 |
|------------------|----------------------------------|-------|------|------------|------------------|
| Cases | Hispanic | 14291 | 44.9 | 90,851 | 15730 |
| | White | 4705 | 14.8 | 51,159 | 9196.8 |
| | Black | 4779 | 15.0 | 42,754 | 11178 |
| | Asian | 1189 | 3.7 | 11,090 | 10721 |
| | American Indian/Alaskan Native | 36 | 0.1 | 719 | 5007.0 |
| | Multi-race | 80 | 0.3 | 8,388 | 953.74 |
| | Native Hawaiian/Pacific Islander | 379 | 1.2 | 1,246 | 30417 |
| | Unknown | 6400 | 20.1 | . | . |
| Hospitalizations | Hispanic | 795 | 40.4 | 90,851 | 875.06 |
| | White | 402 | 20.4 | 51,159 | 785.79 |
| | Black | 485 | 24.6 | 42,754 | 1134.4 |
| | Asian | 103 | 5.2 | 11,090 | 928.76 |
| | American Indian/Alaskan Native | 7 | 0.4 | 719 | . |
| | Multi-race | 5 | 0.3 | 8,388 | . |
| | Native Hawaiian/Pacific Islander | 44 | 2.2 | 1,246 | 3531.3 |
| | Unknown | 129 | 6.5 | . | . |
| Deaths | Hispanic | 197 | 38.3 | 90,851 | 216.84 |
| | White | 115 | 22.3 | 51,159 | 224.79 |
| | Black | 134 | 26.0 | 42,754 | 313.42 |
| | Asian | 44 | 8.5 | 11,090 | 396.75 |
| | American Indian/Alaskan Native | 3 | 0.6 | 719 | . |
| | Native Hawaiian/Pacific Islander | 16 | 3.1 | 1,246 | 1284.1 |
| | Unknown | 6 | 1.2 | . | . |

Note1: Population data source for calculating rate estimates: U.S. Census Bureau, ACS 5-year estimate.

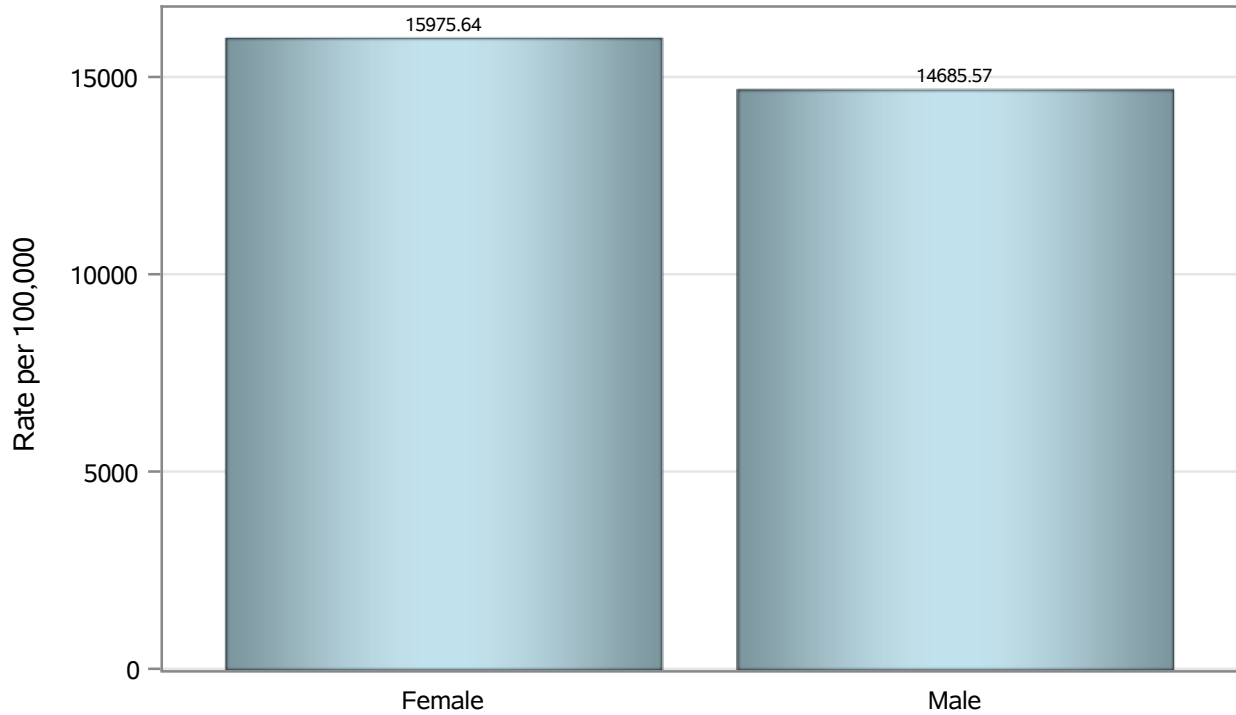
Note2: Rates for categories with fewer than 12 cases are suppressed due to high relative standard error.

Note3: Hospitalizations are regardless of deceased status; Deaths are regardless of hospitalization status

**Investigations are ongoing; data are subject to change.
Reporting through 01SEP2021**

North Las Vegas zip codes include 89030, 89031, 89032, 89033, 89036, 89081, 89184, 89085, 89086, 89087.

Case Birth Sex Rates in North Las Vegas

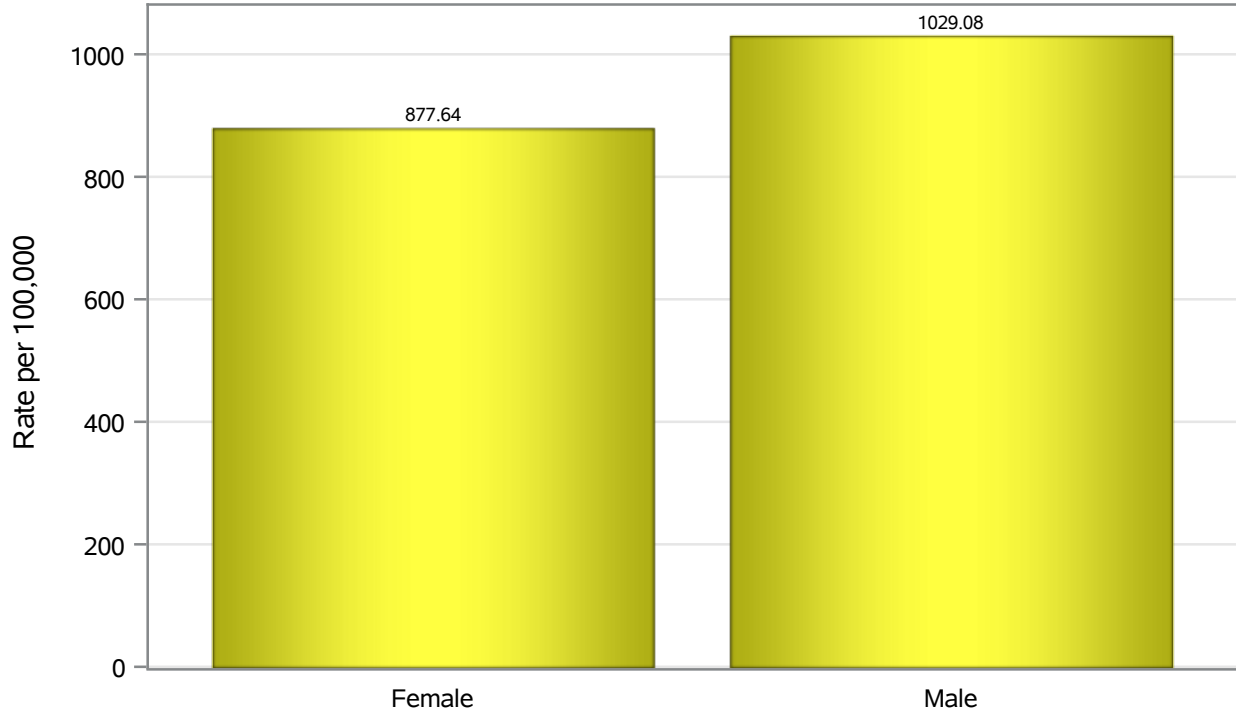


Investigations are ongoing; data are subject to change.

Reporting through 01SEP2021

North Las Vegas zip codes include 89030, 89031, 89032, 89033, 89036, 89081, 89184, 89085, 89086, 89087.

Hospitalization Birth Sex Rates in North Las Vegas

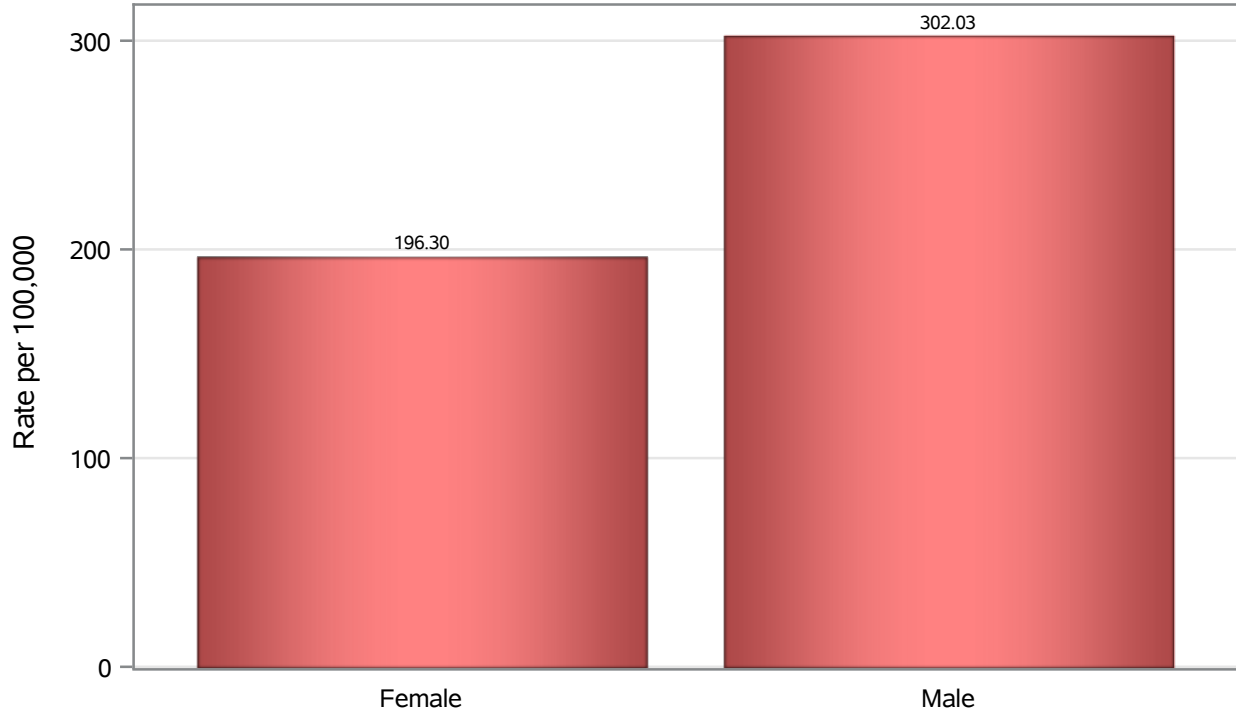


Investigations are ongoing; data are subject to change.

Reporting through 01SEP2021

North Las Vegas zip codes include 89030, 89031, 89032, 89033, 89036, 89081, 89184, 89085, 89086, 89087.

Death Birth Sex Rates in North Las Vegas



Investigations are ongoing; data are subject to change.

Reporting through 01SEP2021

North Las Vegas zip codes include 89030, 89031, 89032, 89033, 89036, 89081, 89184, 89085, 89086, 89087.

Table 7: Birth Sex and COVID19 in North Las Vegas

| Case Status | Birth Sex Categories | N | % | Population | Rate per 100,000 |
|------------------|----------------------|-------|------|------------|------------------|
| Cases | Female | 16765 | 52.6 | 104941 | 15976 |
| | Male | 14927 | 46.9 | 101644 | 14686 |
| | Unknown | 167 | 0.5 | . | . |
| Hospitalizations | Female | 921 | 46.8 | 104941 | 877.64 |
| | Male | 1046 | 53.1 | 101644 | 1029.1 |
| | Unknown | 3 | 0.2 | . | . |
| Deaths | Female | 206 | 40.0 | 104941 | 196.30 |
| | Male | 307 | 59.6 | 101644 | 302.03 |
| | Unknown | 2 | 0.4 | . | . |

Note1: Population data source for calculating rate estimates: U.S. Census Bureau, ACS 5-year estimate.

Note2: Rates for categories with fewer than 12 cases are suppressed due to high relative standard error.

Note3: Hospitalizations are regardless of deceased status; Deaths are regardless of hospitalization status

**Investigations are ongoing; data are subject to change.
Reporting through 01SEP2021**

North Las Vegas zip codes include 89030, 89031, 89032, 89033, 89036, 89081, 89184, 89085, 89086, 89087.