

COVID-19 Trends

Clark County, Nevada

Document creation date: September 5, 2021

- General notes: This report uses surveillance data collected by the Southern Nevada Health District. Due to delays related to laboratory processing, reporting, and case investigations, data from the most recent days are less complete than data from older time points. For this reason, as of June 10, 2020 this report will not display data from the previous three days prior to the date that the report was created. As many case investigations are ongoing, all data presented in this report are considered preliminary and subject to change. Data regarding cases, hospitalizations, deaths, and labs were last updated September 5, 2021 at 12:00 AM, and data is reported up through September 1, 2021.
- Cases: Symptom onset date was used for aggregating cases. If symptom onset date was missing, the following dates were substituted in this order: diagnosis date, lab collection date, report date (date case was reported to SNHD), event creation date (date case was entered into TriSano, SNHD's surveillance system).
- Hospitalizations: Admission date was used for aggregating hospitalizations. If admission date was missing, report date was substituted. If a person had more than one hospitalization after his/her COVID-19 diagnosis, only the first admission date was used.
- Deaths: Date of death was used for aggregating deaths. If date of death was missing, report date was used.
- For the "7-Day Average of Daily New Cases per 100K, by Age Group (Years)" graph and table, the population data source for calculating rate estimates was from Nevada State Demographer "2019 ASRHO Estimates and Projections Summary 2000 to 2038", 2020 projection, vintage 2019. Rates for individual age categories may be based on small numbers, which may give unstable estimates.
- All graphs in this report show data from approximately 60 days prior to the date of the report.
- All tables show data from the last 14 days before the current date, with the exception of the "Percent Change in Weekly Totals from Previous Week", which displays data from the previous eight completed weeks.
- For the "Percent of People Receiving COVID-19 Viral Tests Who Have Positive Results" graph, one person who has multiple specimens collected in one day is only reported once. If any test of that person is positive, that person counts as a positive result. If all tests of that individual are negative, that person counts as a negative result. Laboratory tests were included if they were a test assessing for the presence of SARS-CoV-2 viral RNA, for example PCR tests. Antibody tests were excluded.

COVID-19 Cases

Clark County, NV

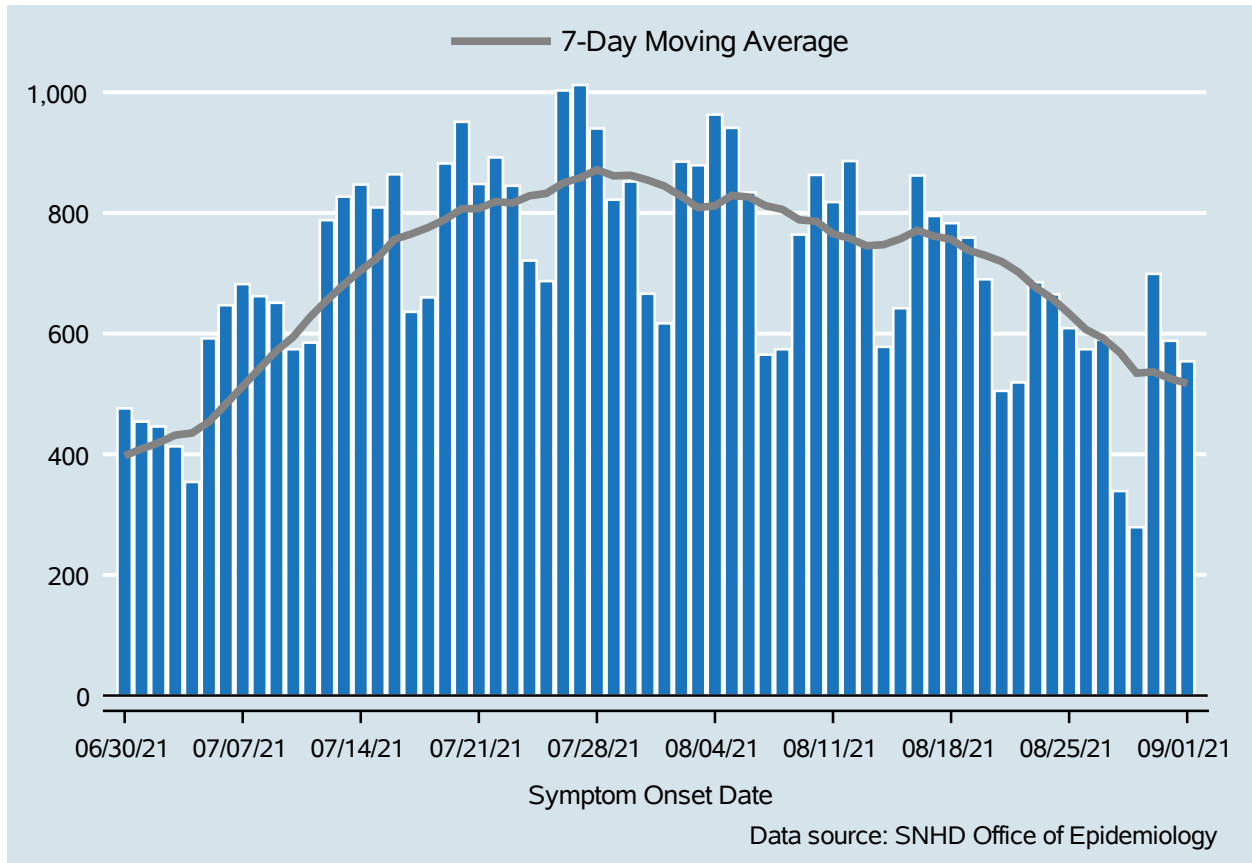


Table 1: COVID-19 Cases per Day, Clark County, NV

Date	Cases Per Day	7-Day Moving Average
Aug 19	759	738.3
Aug 20	690	729.9
Aug 21	505	719.4
Aug 22	519	701.9
Aug 23	685	676.6
Aug 24	665	658.0
Aug 25	609	633.1
Aug 26	574	606.7
Aug 27	590	592.4
Aug 28	339	568.7
Aug 29	279	534.4
Aug 30	699	536.4
Aug 31	588	525.4
Sep 01	554	517.6

COVID-19 Hospitalizations

Clark County, NV

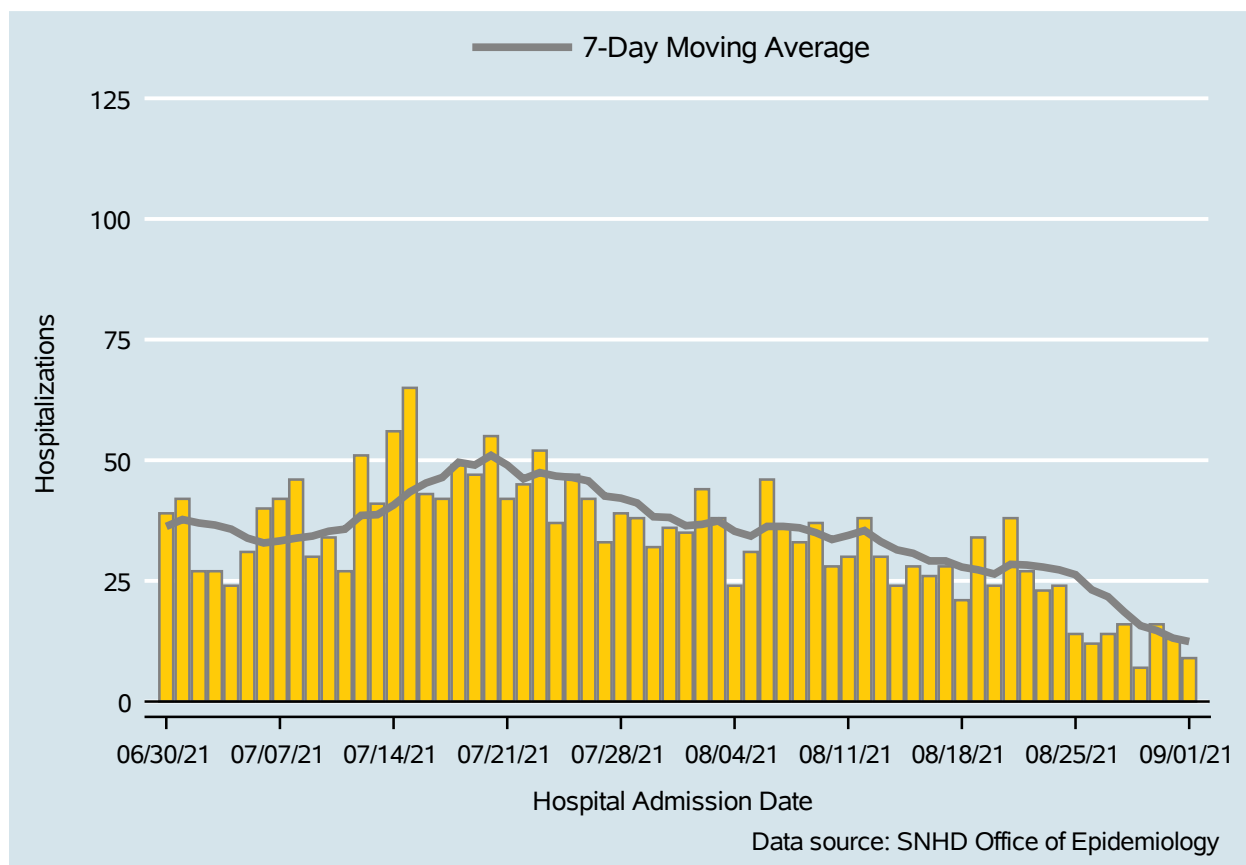


Table 2: COVID-19 Hospitalizations per Day, Clark County, NV

Date	Hospitalizations Per Day	7-Day Moving Average
Aug 19	34	27.3
Aug 20	24	26.4
Aug 21	38	28.4
Aug 22	27	28.3
Aug 23	23	27.9
Aug 24	24	27.3
Aug 25	14	26.3
Aug 26	12	23.1
Aug 27	14	21.7
Aug 28	16	18.6
Aug 29	7	15.7
Aug 30	16	14.7
Aug 31	13	13.1
Sep 01	9	12.4

COVID-19 Deaths

Clark County, NV

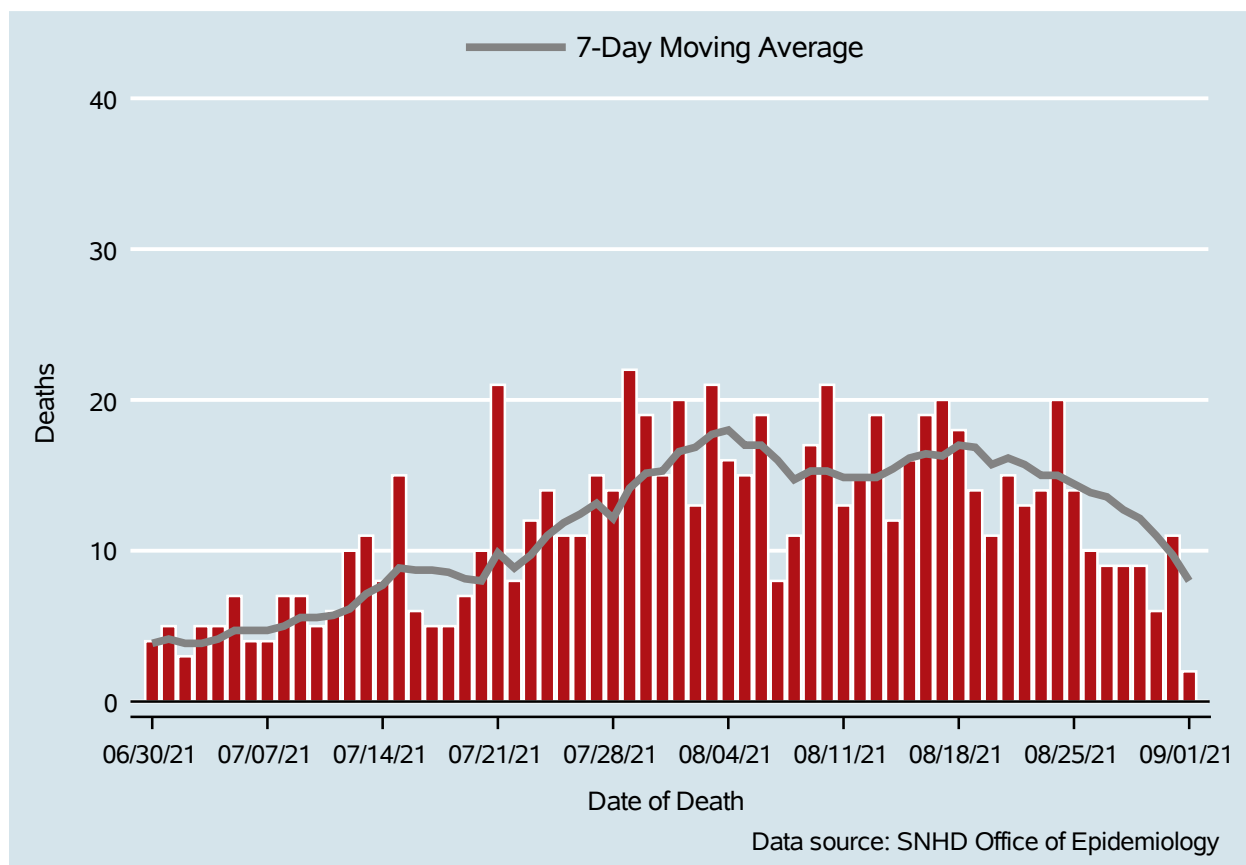


Table 3: COVID-19 Deaths per Day, Clark County, NV

Date	Deaths Per Day	7-Day Moving Average
Aug 19	14	16.9
Aug 20	11	15.7
Aug 21	15	16.1
Aug 22	13	15.7
Aug 23	14	15.0
Aug 24	20	15.0
Aug 25	14	14.4
Aug 26	10	13.9
Aug 27	9	13.6
Aug 28	9	12.7
Aug 29	9	12.1
Aug 30	6	11.0
Aug 31	11	9.7
Sep 01	2	8.0

7-Day Average of Daily New Cases per 100K, by Age Group (Years)

Clark County, NV

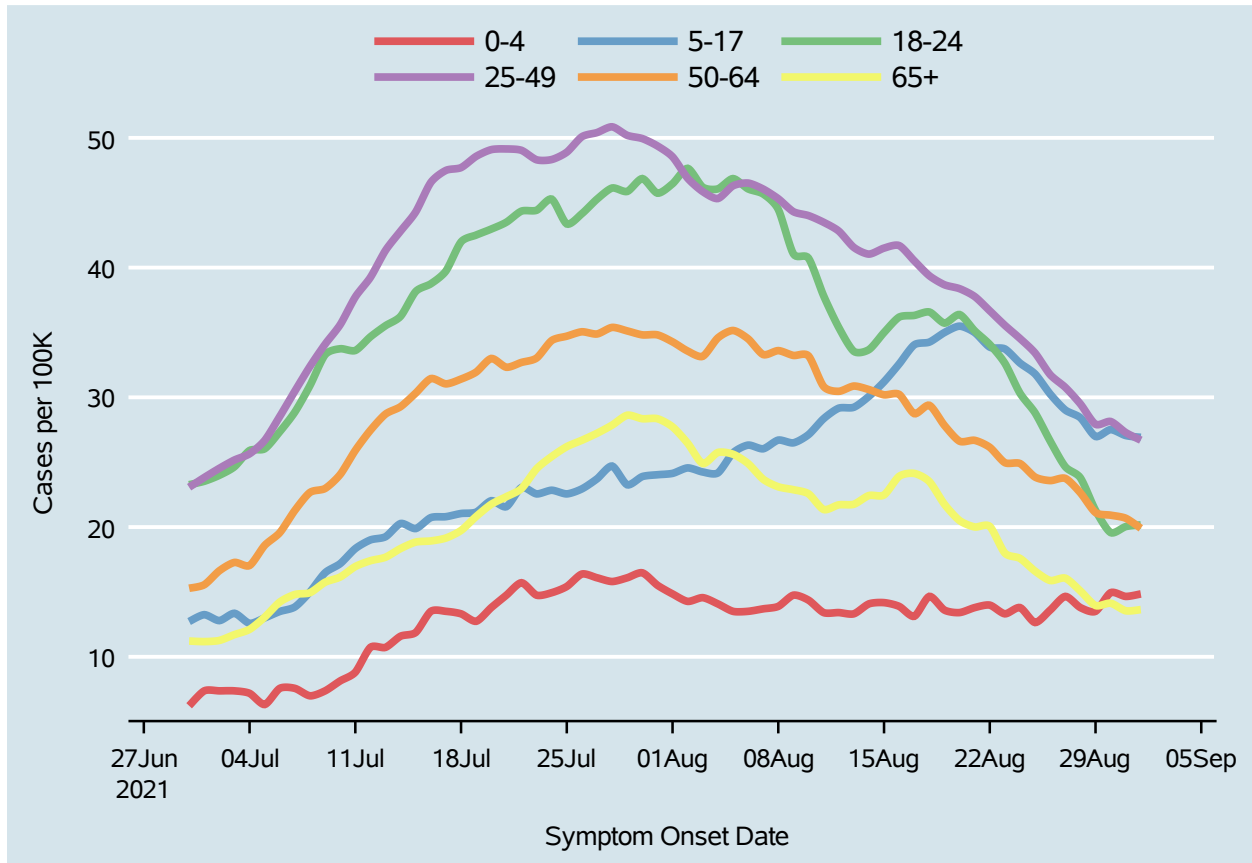
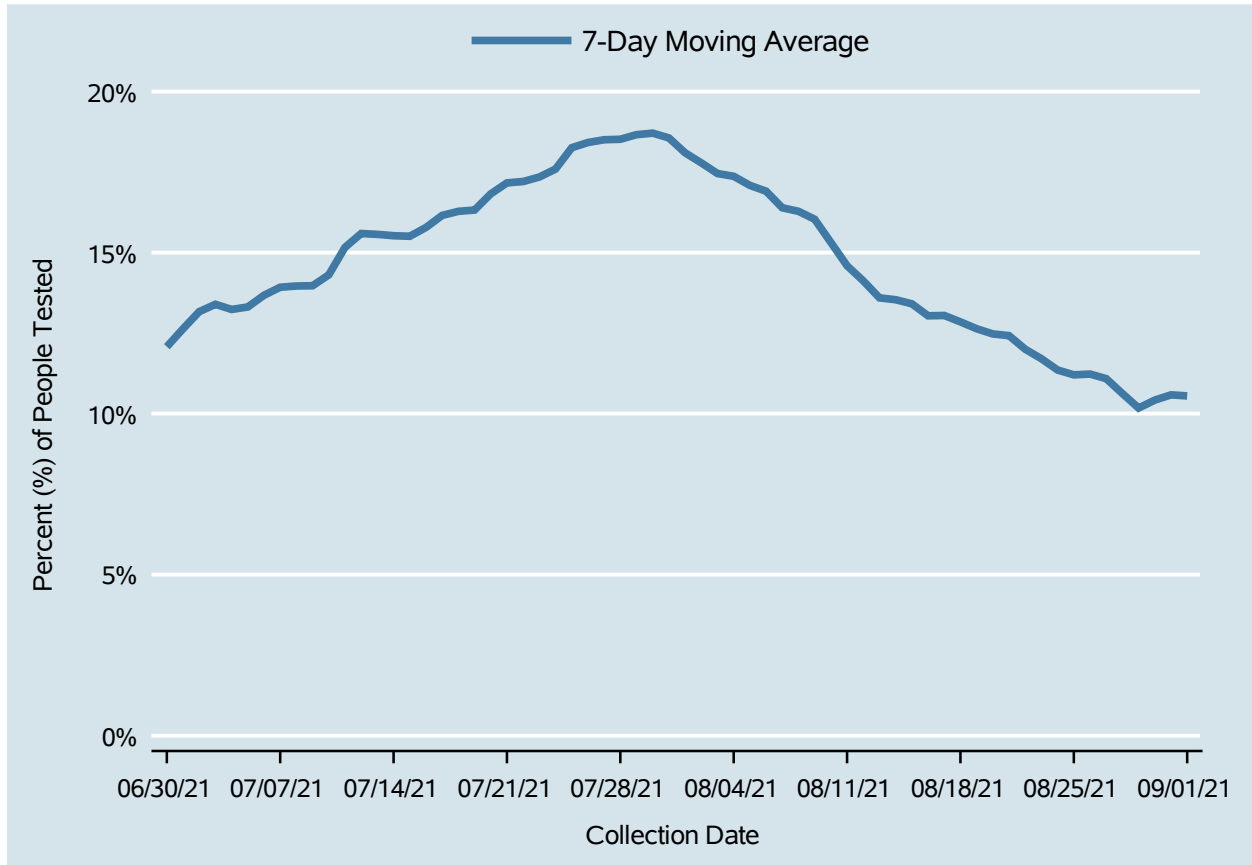


Table 4: 7-Day Average of Daily New Cases per 100K, by Age Group (Years)

Date	0-4	5-17	18-24	25-49	50-64	65+
Aug 19	13.6	35.0	35.7	38.7	27.8	21.8
Aug 20	13.4	35.5	36.4	38.4	26.6	20.5
Aug 21	13.8	35.0	35.1	37.8	26.7	20.0
Aug 22	14.0	33.9	34.1	36.7	26.1	20.1
Aug 23	13.3	33.7	32.6	35.5	25.0	18.0
Aug 24	13.8	32.6	30.3	34.5	24.9	17.6
Aug 25	12.6	31.8	28.8	33.4	23.9	16.6
Aug 26	13.6	30.3	26.6	31.7	23.6	15.9
Aug 27	14.7	29.0	24.6	30.8	23.7	16.1
Aug 28	13.8	28.4	23.8	29.5	22.6	15.1
Aug 29	13.5	27.0	21.3	27.9	21.1	14.0
Aug 30	14.9	27.5	19.6	28.1	20.9	14.1
Aug 31	14.7	27.1	20.0	27.3	20.7	13.5
Sep 01	14.8	26.9	20.2	26.7	19.9	13.6

Percent of People Receiving COVID-19 Viral Tests Who Have Positive Results

Clark County, NV



Report prepared by: Kellie Watkins, PhD, MS, Ying Zhang, PhD, MPH (Office of Epidemiology) and Lei Zhang, MS (Office of Informatics)