

# COVID-19 Trends

Clark County, Nevada

Document creation date: September 1, 2021

- General notes: This report uses surveillance data collected by the Southern Nevada Health District. Due to delays related to laboratory processing, reporting, and case investigations, data from the most recent days are less complete than data from older time points. For this reason, as of June 10, 2020 this report will not display data from the previous three days prior to the date that the report was created. As many case investigations are ongoing, all data presented in this report are considered preliminary and subject to change. Data regarding cases, hospitalizations, deaths, and labs were last updated September 1, 2021 at 12:00 AM, and data is reported up through August 28, 2021.
- Cases: Symptom onset date was used for aggregating cases. If symptom onset date was missing, the following dates were substituted in this order: diagnosis date, lab collection date, report date (date case was reported to SNHD), event creation date (date case was entered into TriSano, SNHD's surveillance system).
- Hospitalizations: Admission date was used for aggregating hospitalizations. If admission date was missing, report date was substituted. If a person had more than one hospitalization after his/her COVID-19 diagnosis, only the first admission date was used.
- Deaths: Date of death was used for aggregating deaths. If date of death was missing, report date was used.
- For the "7-Day Average of Daily New Cases per 100K, by Age Group (Years)" graph and table, the population data source for calculating rate estimates was from Nevada State Demographer "2019 ASRHO Estimates and Projections Summary 2000 to 2038", 2020 projection, vintage 2019. Rates for individual age categories may be based on small numbers, which may give unstable estimates.
- All graphs in this report show data from approximately 60 days prior to the date of the report.
- All tables show data from the last 14 days before the current date, with the exception of the "Percent Change in Weekly Totals from Previous Week", which displays data from the previous eight completed weeks.
- For the "Percent of People Receiving COVID-19 Viral Tests Who Have Positive Results" graph, one person who has multiple specimens collected in one day is only reported once. If any test of that person is positive, that person counts as a positive result. If all tests of that individual are negative, that person counts as a negative result. Laboratory tests were included if they were a test assessing for the presence of SARS-CoV-2 viral RNA, for example PCR tests. Antibody tests were excluded.

# COVID-19 Cases

Clark County, NV

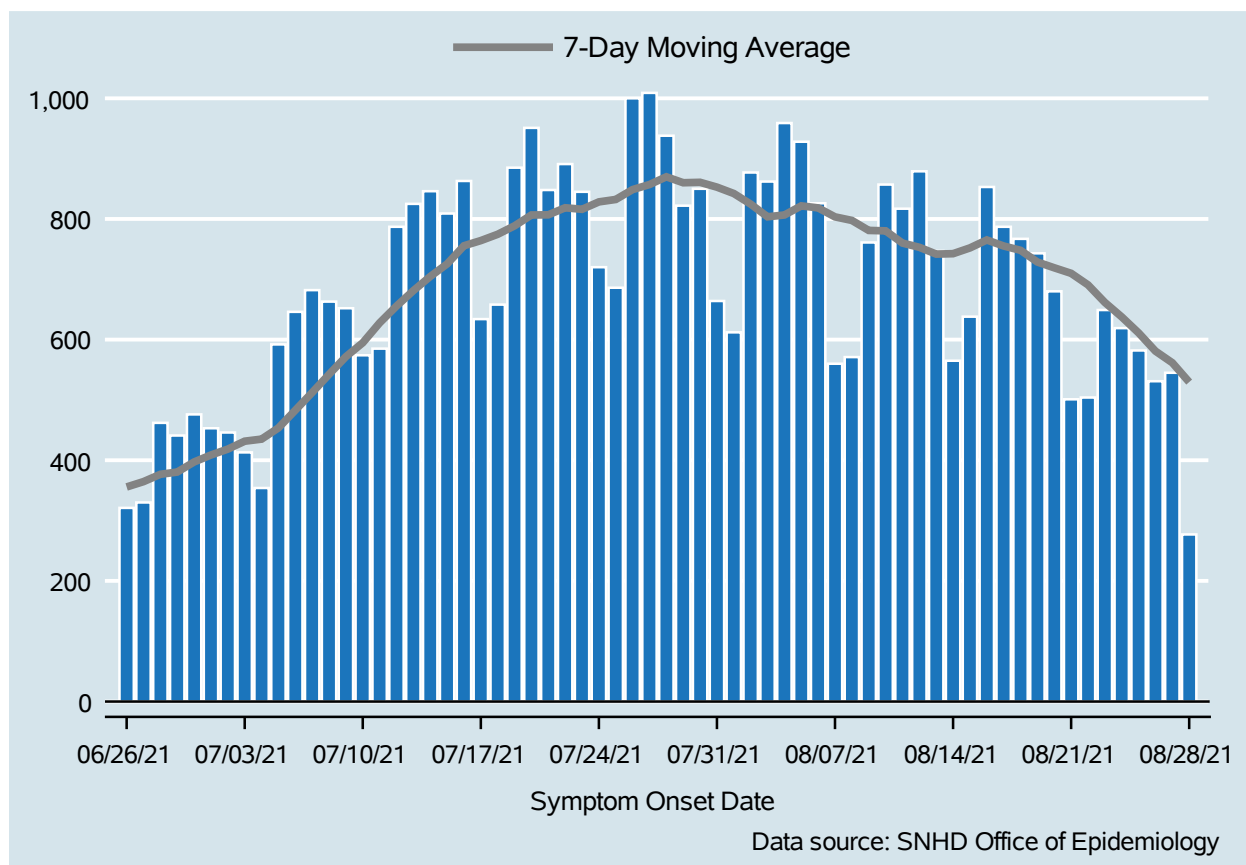


Table 1: COVID-19 Cases per Day, Clark County, NV

Date	Cases Per Day	7-Day Moving Average
Aug 15	638	752.0
Aug 16	853	765.1
Aug 17	787	755.1
Aug 18	767	748.0
Aug 19	743	728.6
Aug 20	680	719.0
Aug 21	501	709.9
Aug 22	504	690.7
Aug 23	649	661.6
Aug 24	619	637.6
Aug 25	582	611.1
Aug 26	531	580.9
Aug 27	545	561.6
Aug 28	277	529.6

# COVID-19 Hospitalizations

Clark County, NV

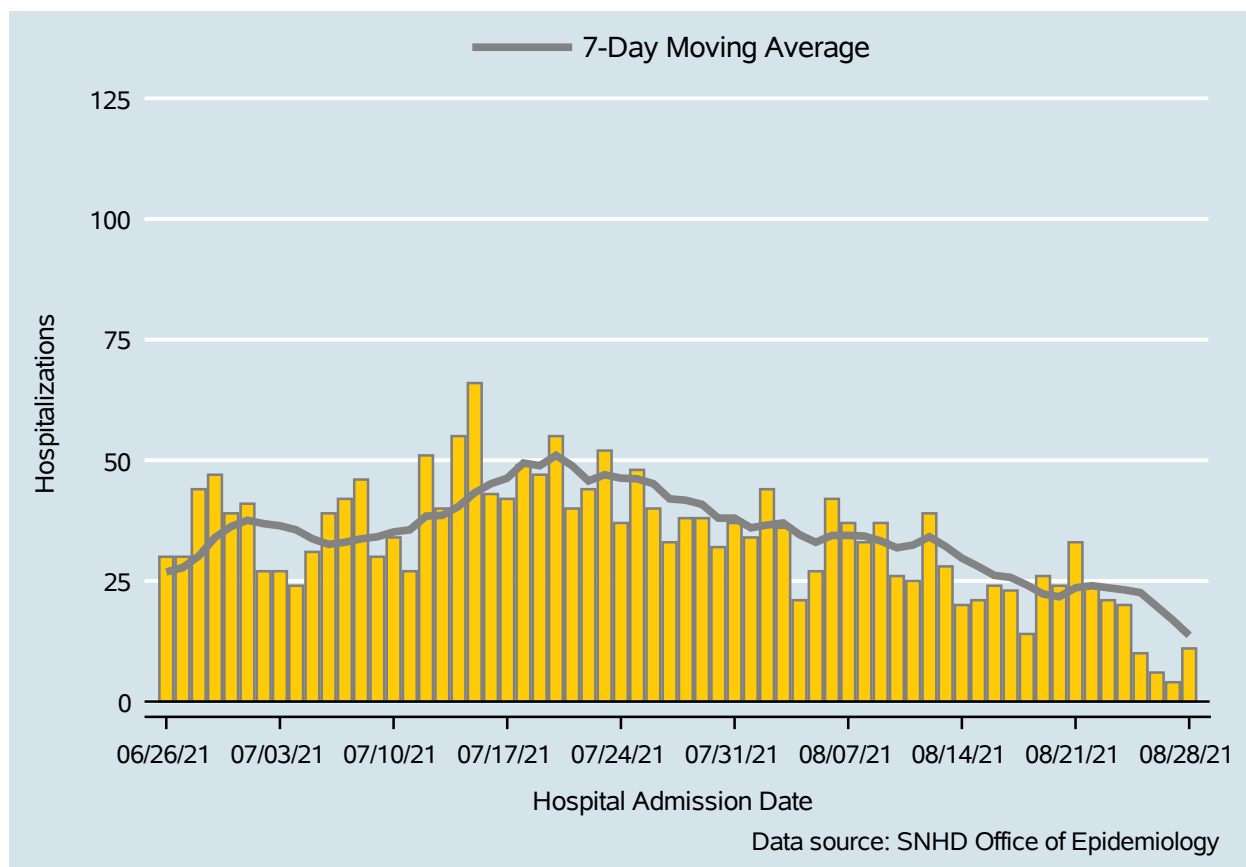


Table 2: COVID-19 Hospitalizations per Day, Clark County, NV

Date	Hospitalizations Per Day	7-Day Moving Average
Aug 15	21	28.0
Aug 16	24	26.1
Aug 17	23	25.7
Aug 18	14	24.1
Aug 19	26	22.3
Aug 20	24	21.7
Aug 21	33	23.6
Aug 22	24	24.0
Aug 23	21	23.6
Aug 24	20	23.1
Aug 25	10	22.6
Aug 26	6	19.7
Aug 27	4	16.9
Aug 28	11	13.7

# COVID-19 Deaths

Clark County, NV

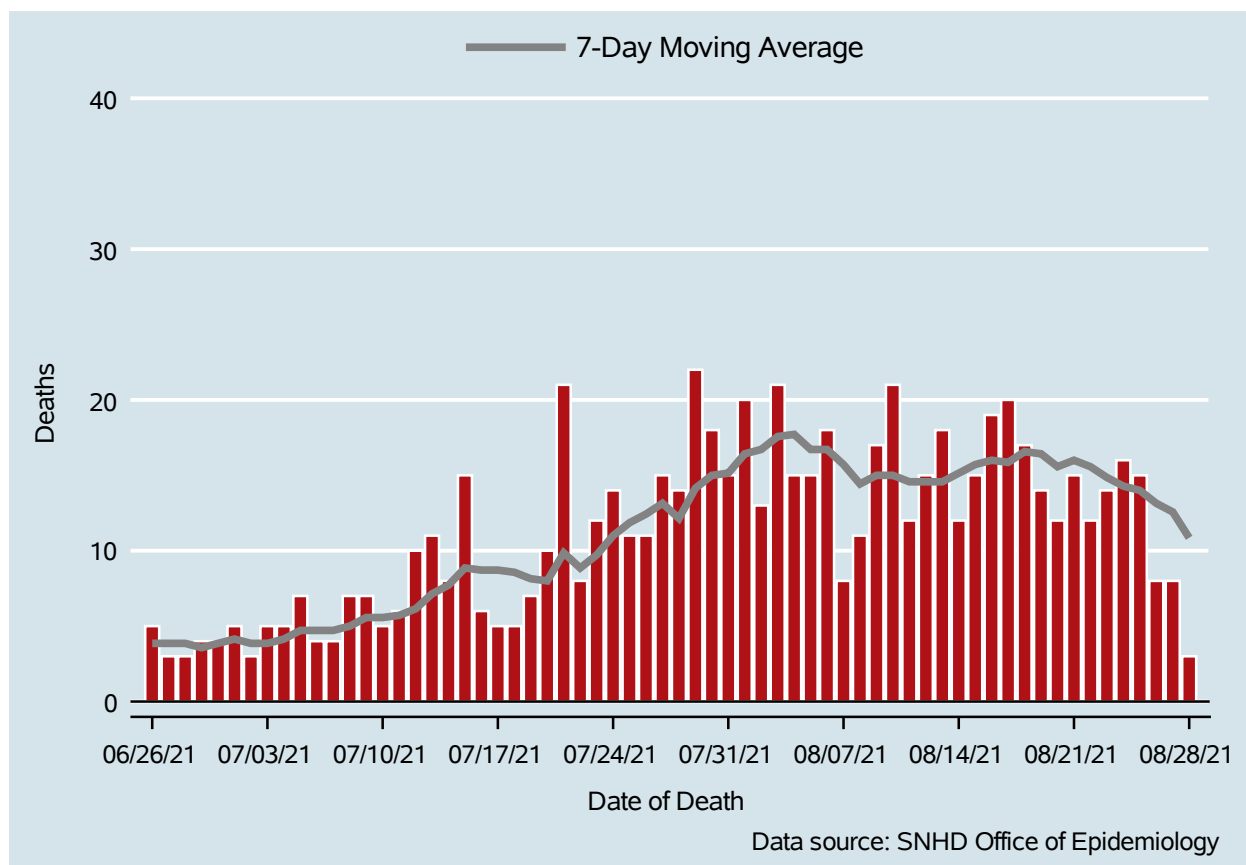


Table 3: COVID-19 Deaths per Day, Clark County, NV

Date	Deaths Per Day	7-Day Moving Average
Aug 15	15	15.7
Aug 16	19	16.0
Aug 17	20	15.9
Aug 18	17	16.6
Aug 19	14	16.4
Aug 20	12	15.6
Aug 21	15	16.0
Aug 22	12	15.6
Aug 23	14	14.9
Aug 24	16	14.3
Aug 25	15	14.0
Aug 26	8	13.1
Aug 27	8	12.6
Aug 28	3	10.9

## 7-Day Average of Daily New Cases per 100K, by Age Group (Years)

Clark County, NV

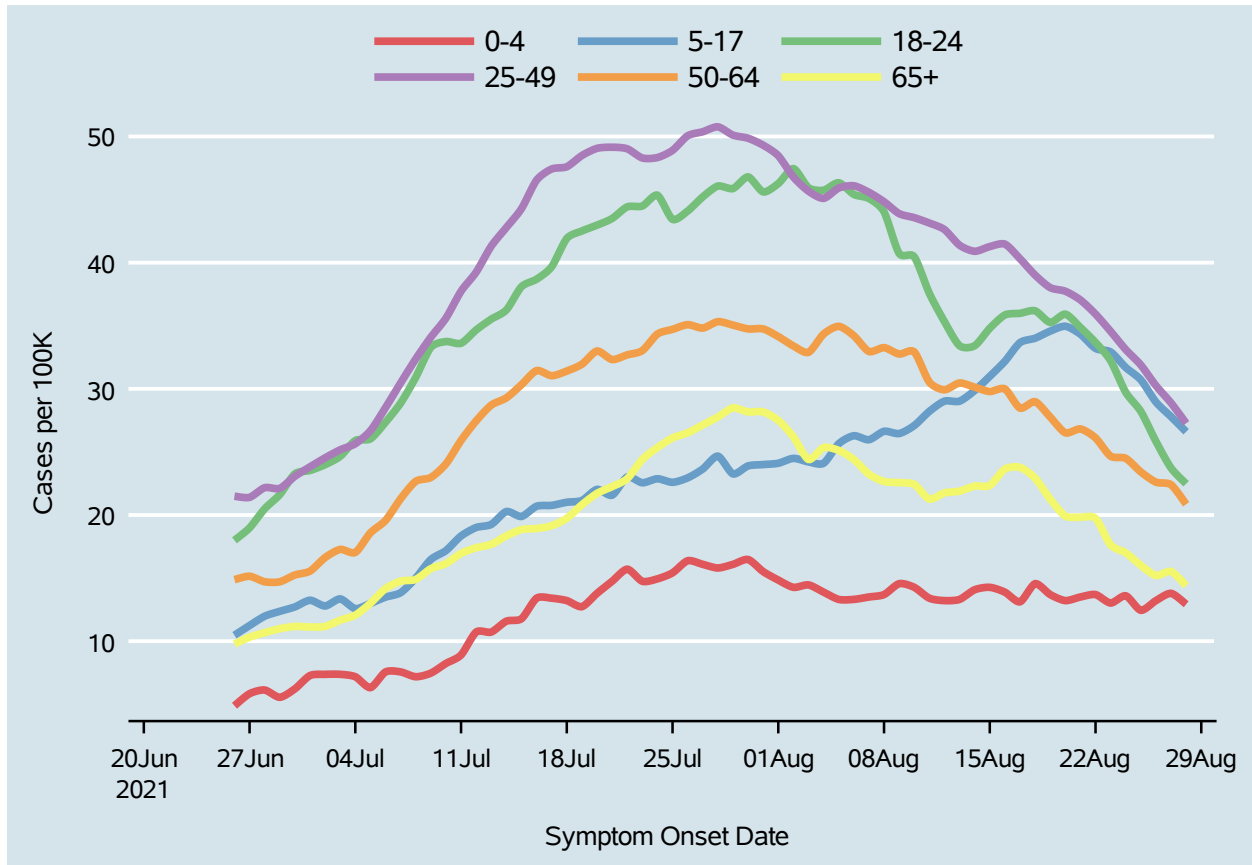
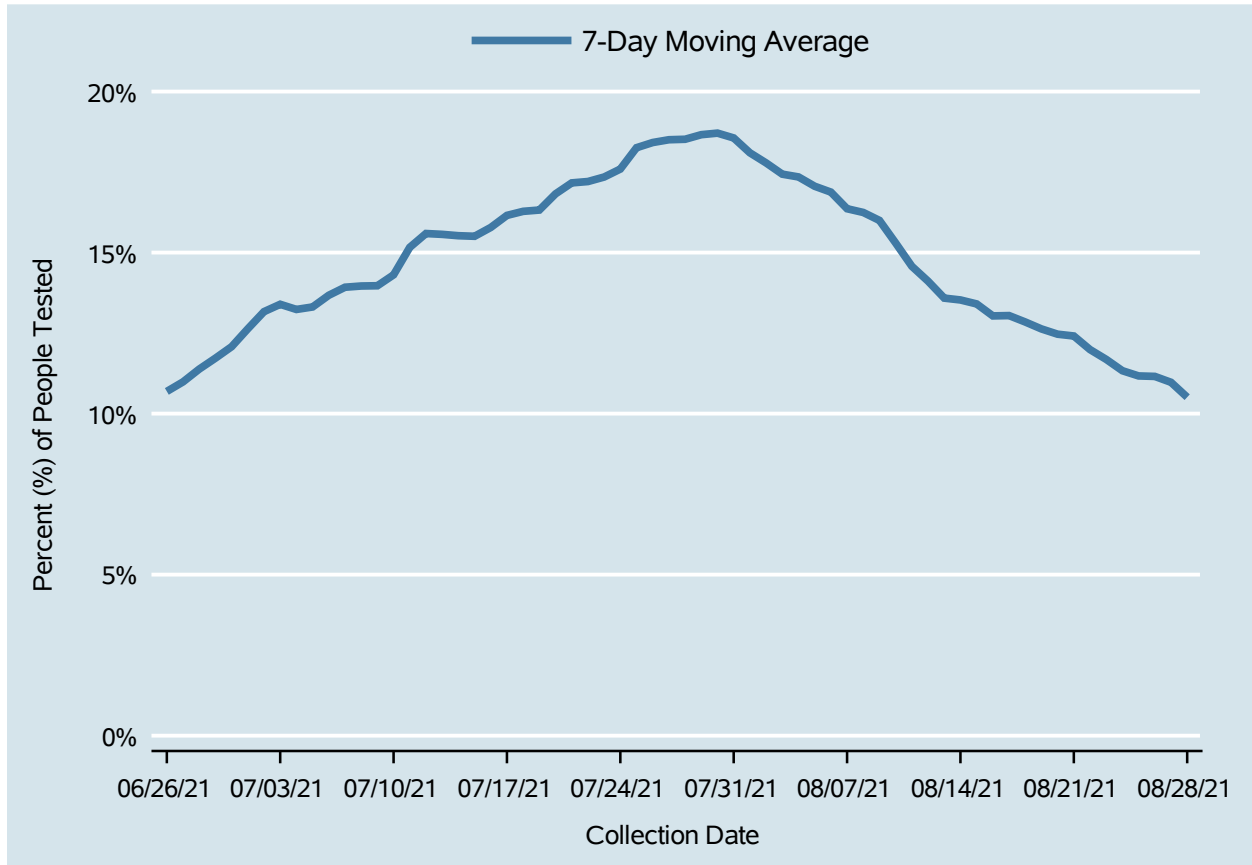


Table 4: 7-Day Average of Daily New Cases per 100K, by Age Group (Years)

Date	0-4	5-17	18-24	25-49	50-64	65+
Aug 15	14.3	31.0	34.8	41.3	29.8	22.3
Aug 16	13.9	32.2	35.9	41.5	30.0	23.6
Aug 17	13.1	33.7	36.0	40.3	28.5	23.8
Aug 18	14.6	34.0	36.2	39.0	29.0	22.9
Aug 19	13.7	34.6	35.3	38.0	27.8	21.3
Aug 20	13.2	35.0	35.9	37.7	26.5	19.9
Aug 21	13.5	34.3	34.9	37.0	26.8	19.8
Aug 22	13.7	33.2	33.7	35.9	26.1	19.7
Aug 23	13.0	32.9	32.2	34.6	24.7	17.6
Aug 24	13.6	31.7	29.7	33.1	24.5	17.0
Aug 25	12.5	30.7	28.2	31.9	23.4	16.0
Aug 26	13.2	29.0	25.8	30.3	22.6	15.2
Aug 27	13.8	27.8	23.7	28.9	22.4	15.5
Aug 28	12.9	26.6	22.5	27.3	20.8	14.4

# Percent of People Receiving COVID-19 Viral Tests Who Have Positive Results

Clark County, NV



*Report prepared by: Kellie Watkins, PhD, MS, Ying Zhang, PhD, MPH (Office of Epidemiology) and Lei Zhang, MS (Office of Informatics)*