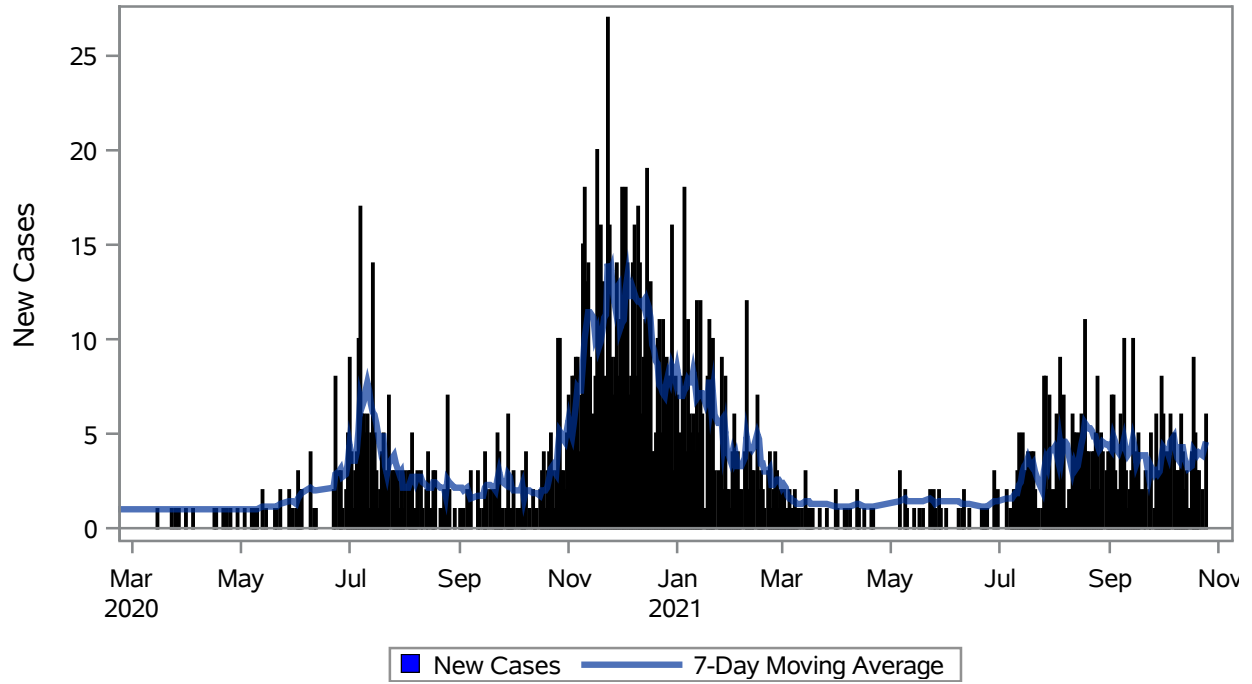


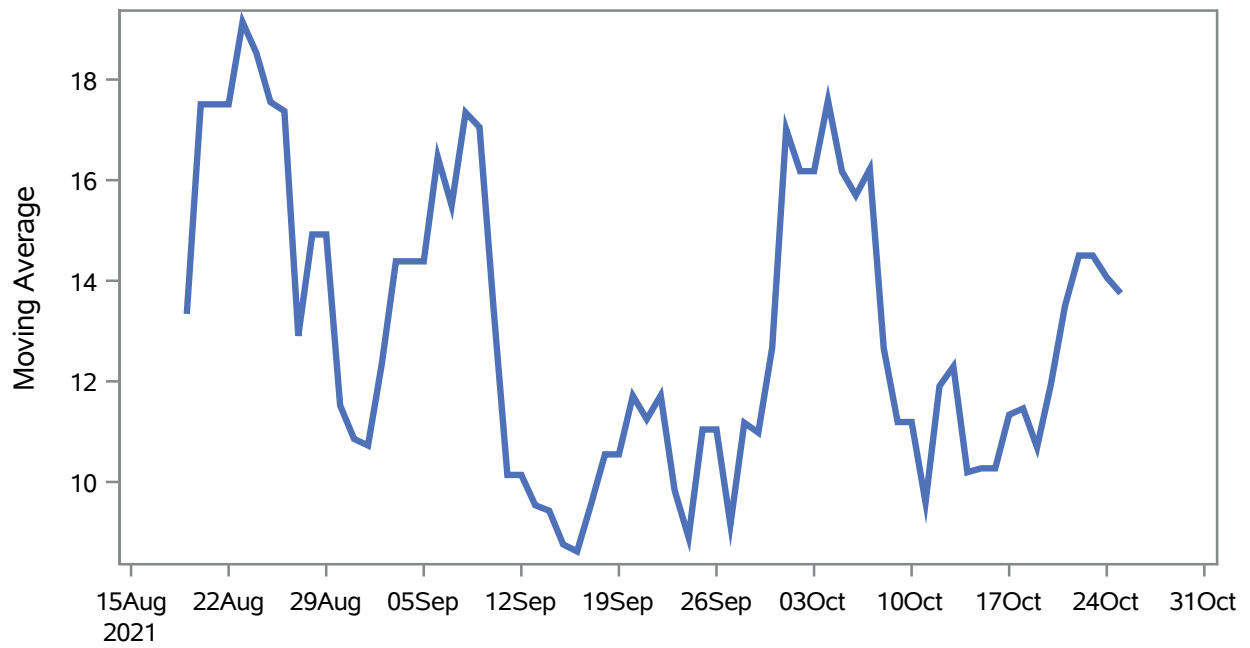
COVID19 Cases for Mesquite, 7-Day Moving Average



Investigations are ongoing; data are subject to change.
Reporting through 27OCT2021

Mesquite zip codes include 89027,89034. The U.S. Census Bureau data uses Zip Code Tabulation Area (ZCTA), which does not list 89034 but has incorporated areas of 89034 within 89027 through the American Community Survey (ACS) 5-Year Estimates.

Percent of People Receiving COVID-19 Viral Tests Who Have Positive Results in Mesquite



Investigations are ongoing; data are subject to change.

Reporting through 27OCT2021

Mesquite zip codes include 89027,89034. The U.S. Census Bureau data uses Zip Code Tabulation Area (ZCTA), which does not list 89034 but has incorporated areas of 89034 within 89027 through the American Community Survey (ACS) 5-Year Estimates.

Table 1: Age and COVID19 in Mesquite

Case Status	Age Categories	N	%	Population	Rate per 100,000
Cases	Aged 4 or less	17	1.0	702	2421.7
	Aged 5 to 17	130	7.6	2,217	5863.8
	Aged 18 to 24	170	10.0	938	18124
	Aged 25 to 49	483	28.3	3,386	14265
	Aged 50 to 64	368	21.5	3,371	10917
	Aged 64+	540	31.6	7,290	7407.4
Hospitalizations	Aged 4 or less	1	0.9	702	--
	Aged 5 to 17	1	0.9	2,217	--
	Aged 25 to 49	12	11.1	3,386	354.40
	Aged 50 to 64	21	19.4	3,371	622.96
	Aged 64+	73	67.6	7,290	1001.4
Deaths	Aged 25 to 49	1	2.6	3,386	--
	Aged 50 to 64	2	5.3	3,371	--
	Aged 64+	35	92.1	7,290	480.11

Note1: Population data source for calculating rate estimates: U.S. Census Bureau, ACS 5-year estimate.

Note2: Rates for categories with fewer than 12 cases are suppressed due to high relative standard error.

Note3: Hospitalizations are regardless of deceased status; Deaths are regardless of hospitalization status

**Investigations are ongoing; data are subject to change.
Reporting through 27OCT2021**

Mesquite zip codes include 89027,89034. The U.S. Census Bureau data uses Zip Code Tabulation Area (ZCTA), which does not list 89034 but has incorporated areas of 89034 within 89027 through the American Community Survey (ACS) 5-Year Estimates.

Table 2: Race/Ethnicity and COVID19 in Mesquite

Case Status	Race Ethnicity Categories	N	%	Population	Rate per 100,000
Cases	Hispanic	516	30.2	3,738	13804
	White	864	50.6	13,120	6585.4
	Black	--	--	148	--
	Asian	--	--	486	6378.6
	American Indian/Alaskan Native	--	--	95	--
	Multi-race	--	--	240	--
	Native Hawaiian/Pacific Islander	--	--	30	--
	Unknown	272	15.9	.	.
Hospitalizations	Hispanic	24	22.2	3,738	642.05
	White	70	64.8	13,120	533.54
	Black	--	--	148	--
	Asian	--	--	486	--
	American Indian/Alaskan Native	--	--	95	--
	Multi-race	--	--	240	--
	Native Hawaiian/Pacific Islander	--	--	30	--
	Unknown	6	5.6	.	.
Deaths	Hispanic	2	5.3	3,738	--
	White	33	86.8	13,120	251.52
	Asian	--	--	486	--
	Native Hawaiian/Pacific Islander	--	--	30	--
	Unknown	--	--	.	.

Note1: Population data source for calculating rate estimates: U.S. Census Bureau, ACS 5-year estimate.

Note2: Rates for categories with fewer than 12 cases are suppressed due to high relative standard error. Counts for categories with population less than 500 are suppressed for confidentiality.

Note3: Due to suppression, the total counts per case status may not equal expected totals.

Note4: Hospitalizations are regardless of deceased status; Deaths are regardless of hospitalization status

**Investigations are ongoing; data are subject to change.
Reporting through 27OCT2021**

Mesquite zip codes include 89027,89034. The U.S. Census Bureau data uses Zip Code Tabulation Area (ZCTA), which does not list 89034 but has incorporated areas of 89034 within 89027 through the American Community Survey (ACS) 5-Year Estimates.

Table 3: Birth Sex and COVID19 in Mesquite

Case Status	Birth Sex Categories	N	%	Population	Rate per 100,000
Cases	Female	917	53.7	9,111	10065
	Male	779	45.6	8,793	8859.3
	Unknown	12	0.7	.	.
Hospitalizations	Female	50	46.3	9,111	548.79
	Male	58	53.7	8,793	659.62
Deaths	Female	14	36.8	9,111	153.66
	Male	24	63.2	8,793	272.94

Note1: Population data source for calculating rate estimates: U.S. Census Bureau, ACS 5-year estimate.

Note2: Rates for categories with fewer than 12 cases are suppressed due to high relative standard error. Counts for categories with population less than 500 are suppressed for confidentiality.

Note3: Hospitalizations are regardless of deceased status; Deaths are regardless of hospitalization status

**Investigations are ongoing; data are subject to change.
Reporting through 27OCT2021**

Mesquite zip codes include 89027,89034. The U.S. Census Bureau data uses Zip Code Tabulation Area (ZCTA), which does not list 89034 but has incorporated areas of 89034 within 89027 through the American Community Survey (ACS) 5-Year Estimates.