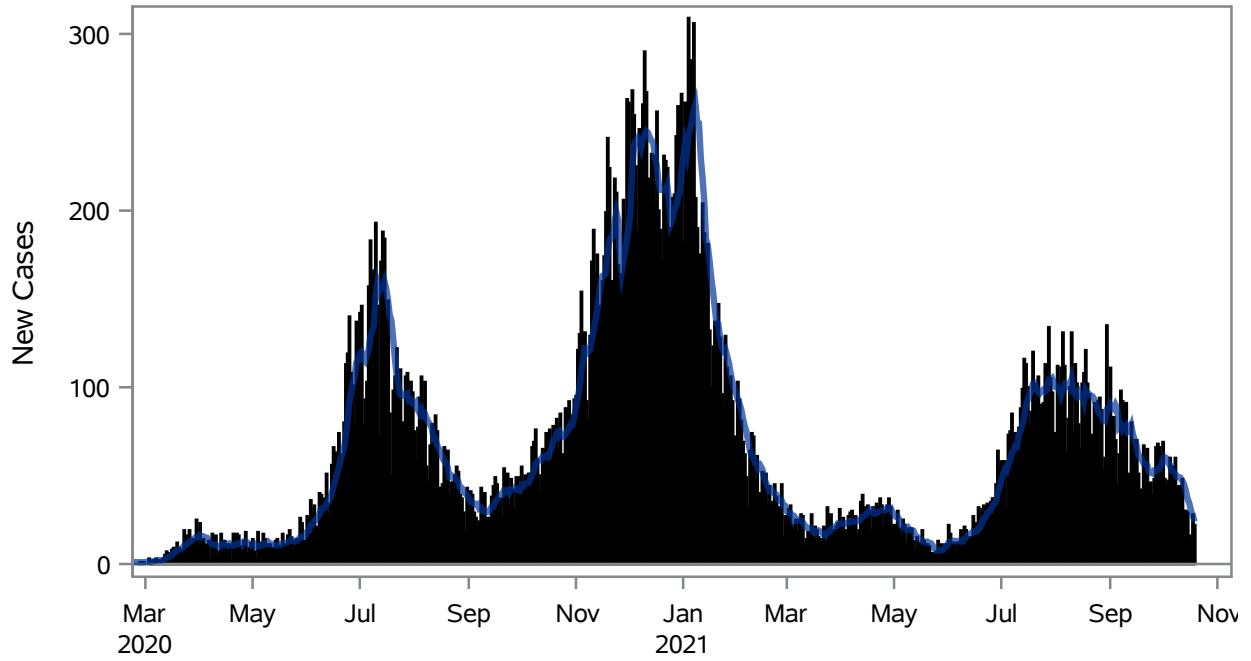


COVID19 Cases for North Las Vegas, 7-Day Moving Average



■ New Cases — 7-Day Moving Average

Investigations are ongoing; data are subject to change.

Reporting through 20OCT2021

North Las Vegas zip codes include 89030, 89031, 89032, 89033, 89036, 89081, 89084, 89085, 89086, 89087.

Table 1: New COVID19 Cases and 7-Day Moving Average in North Las Vegas, Previous Two Weeks

Date (Daily)	New Cases	7-Day Moving Average
07OCT2021	55	52.43
08OCT2021	60	51.14
09OCT2021	35	49.29
10OCT2021	44	49.29
11OCT2021	44	48.86
12OCT2021	48	47.14
13OCT2021	30	45.14
14OCT2021	30	41.57
15OCT2021	29	37.14
16OCT2021	16	34.43
17OCT2021	13	30.00
18OCT2021	28	27.71

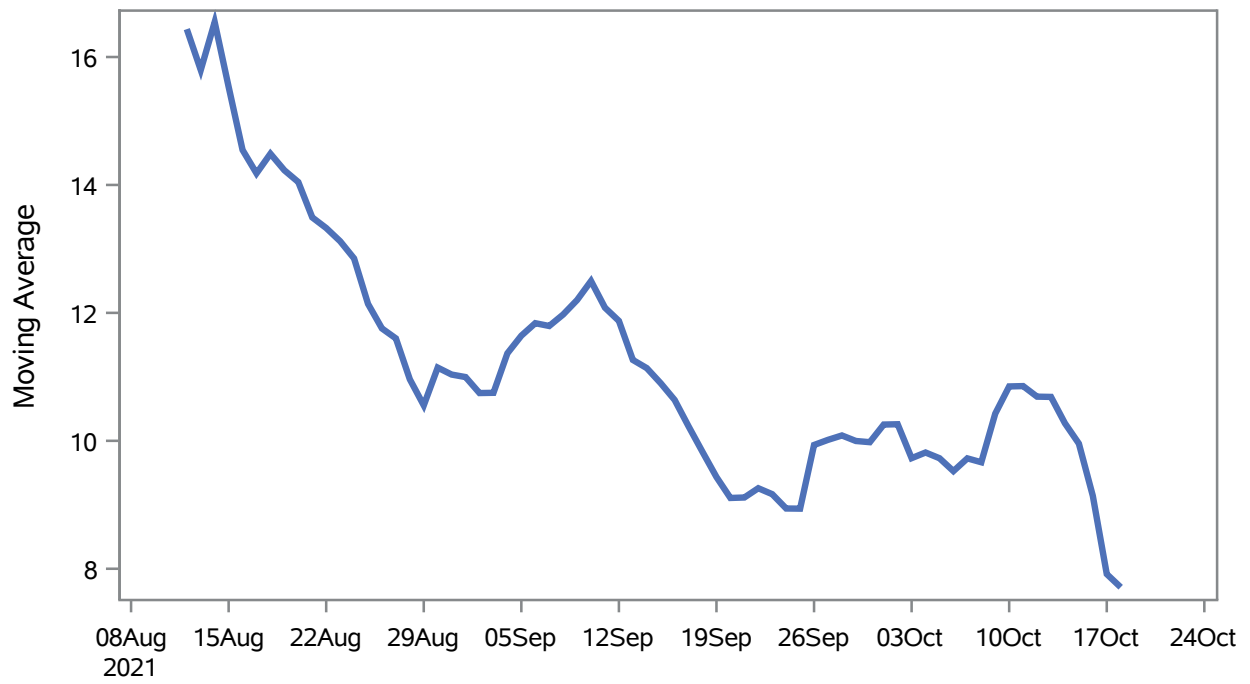
Note1: Event Date is calculated as follows based on completed information:

1) Disease onset date 2) Disease diagnosis date 3) Lab result collection date 4) Report date to SNHD.

**Investigations are ongoing; data are subject to change.
Reporting through 20OCT2021**

North Las Vegas zip codes include 89030, 89031, 89032, 89033, 89036, 89081, 89084, 89085, 89086, 89087.

Percent of People Receiving COVID-19 Viral Tests Who Have Positive Results in North Las Vegas



Investigations are ongoing; data are subject to change.

Reporting through 20OCT2021

North Las Vegas zip codes include 89030, 89031, 89032, 89033, 89036, 89081, 89084, 89085, 89086, 89087.

Table 2: Percent of People Receiving COVID-19 Viral Tests Who Have Positive Results in North Las Vegas

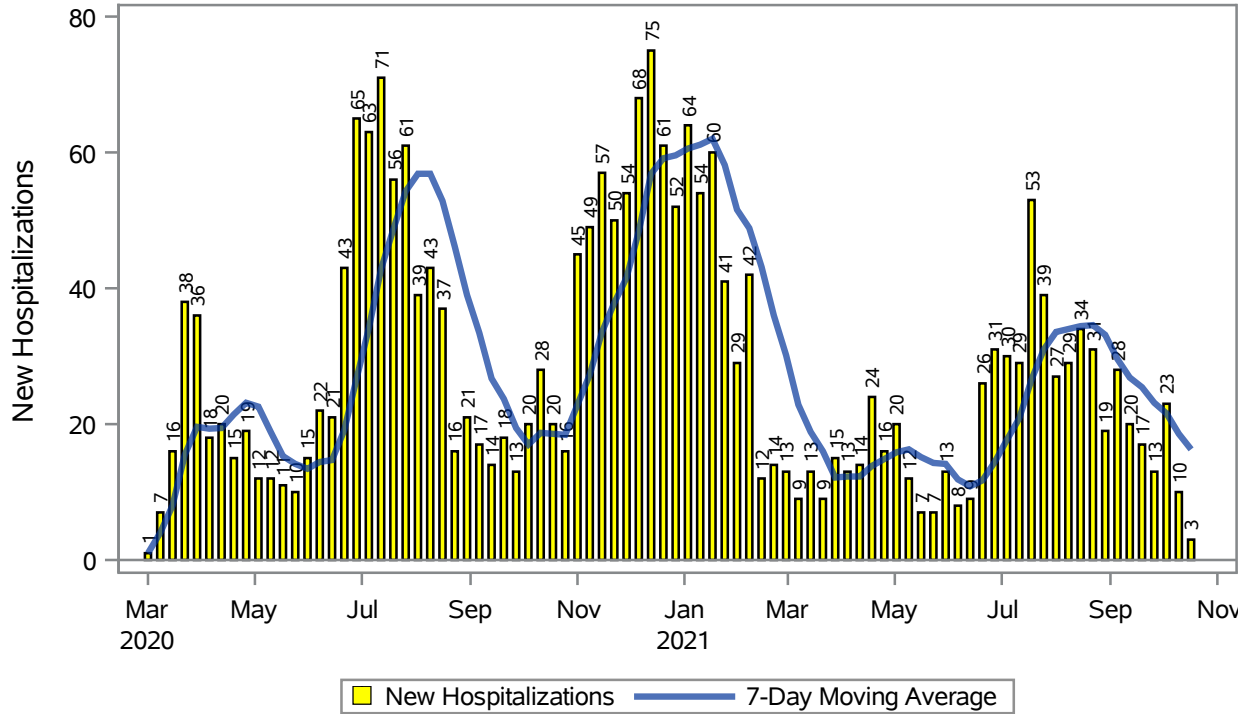
Collection Date	Positive	Negative	Equivocal	Total	% Positivity	7-Day Moving Average
04OCT2021	85	879	1	966	8.80	9.82
05OCT2021	85	1046	3	1134	7.50	9.73
06OCT2021	79	1195	3	1277	6.19	9.53
07OCT2021	90	1127		1218	7.39	9.73
08OCT2021	74	573	1	648	11.42	9.67
09OCT2021	54	263		317	17.03	10.4
10OCT2021	52	242		295	17.63	10.9
11OCT2021	85	876	1	962	8.84	10.9
12OCT2021	71	1048	1	1120	6.34	10.7
13OCT2021	63	958	2	1023	6.16	10.7
14OCT2021	50	1058	2	1110	4.50	10.3
15OCT2021	56	551	2	609	9.20	9.96
16OCT2021	42	328	1	371	11.32	9.14
17OCT2021	32	319	1	353	9.07	7.92
18OCT2021	71	888	1	960	7.40	7.71

Note: Testing Data includes a 3 day delay

**Investigations are ongoing; data are subject to change.
Reporting through 20OCT2021**

North Las Vegas zip codes include 89030, 89031, 89032, 89033, 89036, 89081, 89084, 89085, 89086, 89087.

COVID19 Hospitalizations for North Las Vegas, 7-Day Moving Average



Investigations are ongoing; data are subject to change.

Reporting through 20OCT2021

North Las Vegas zip codes include 89030, 89031, 89032, 89033, 89036, 89081, 89084, 89085, 89086, 89087.

Table 3: New COVID19-Related Hospitalizations and 7-Day Moving Average in North Las Vegas, previous month

Week	Hospitalizations	7-Day Moving Average
26SEP2021	13	23.1
03OCT2021	23	21.6
10OCT2021	10	18.6
17OCT2021	3	16.3

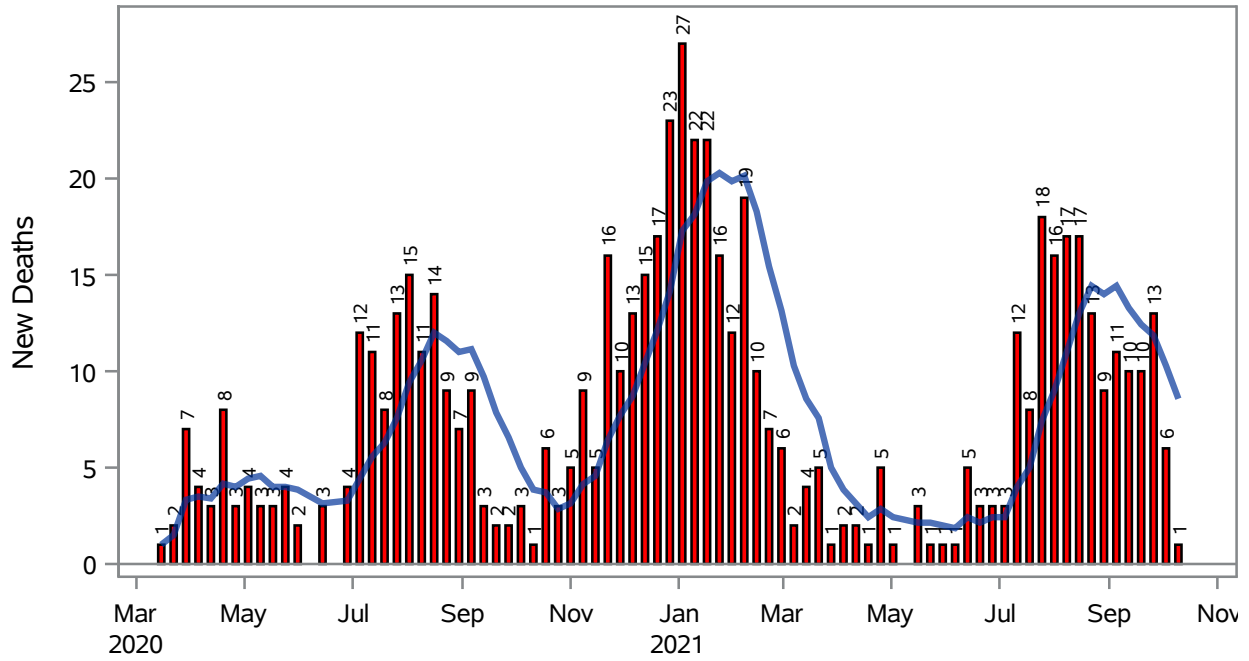
Note1: Admission Date is calculated as follows based on completed information:
A) COVID19 Case is hospitalized B) COVID19 Case has a hospital admission date.

If admission date is missing, then the following is substituted temporarily, in order:
1) Disease onset date 2) Disease diagnosis date 3) Lab result collection date 4) Report date to SNHD.

**Investigations are ongoing; data are subject to change.
Reporting through 20OCT2021**

North Las Vegas zip codes include 89030, 89031, 89032, 89033, 89036, 89081, 89084, 89085, 89086, 89087.

COVID19 Deaths for North Las Vegas, 7-Day Moving Average



■ New Deaths — 7-Day Moving Average

Investigations are ongoing; data are subject to change.

Reporting through 20OCT2021

North Las Vegas zip codes include 89030, 89031, 89032, 89033, 89036, 89081, 89084, 89085, 89086, 89087.

Table 4: New COVID19-Related Deaths and 7-Day Moving Average in North Las Vegas, Previous Month

Week	Deaths	7-Day Moving Average
26SEP2021	13	11.9
03OCT2021	6	10.3
10OCT2021	1	8.57

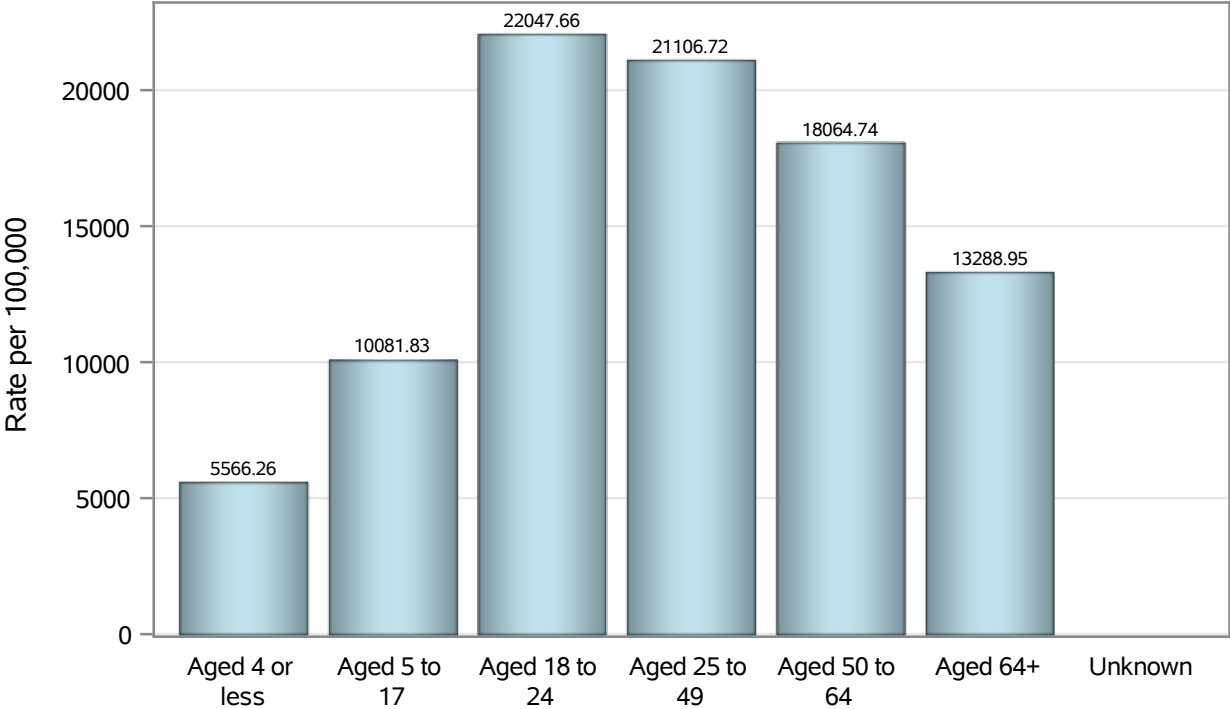
Note1: Date of Death is calculated as follows based on completed information:
A) COVID19 Case is reported as deceased B) COVID19 Case has a reported date of death.

If date of death is missing, then the following is substituted temporarily, in order:
1) Disease onset date 2) Disease diagnosis date
3) Lab result collection date 4) Report date to SNHD.

**Investigations are ongoing; data are subject to change.
Reporting through 20OCT2021**

North Las Vegas zip codes include 89030, 89031, 89032, 89033, 89036, 89081, 89084, 89085, 89086, 89087.

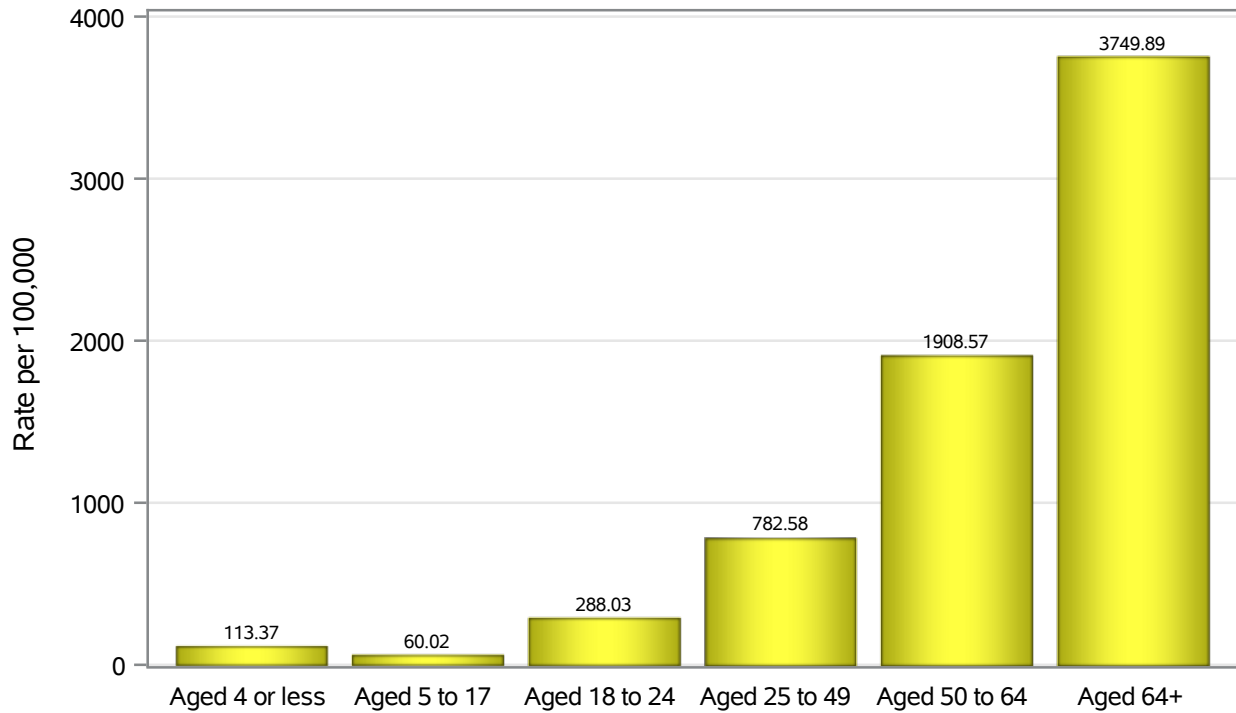
Case Age Rates in North Las Vegas



Investigations are ongoing; data are subject to change.
Reporting through 20OCT2021

North Las Vegas zip codes include 89030, 89031, 89032, 89033, 89036, 89081, 89084, 89085, 89086, 89087.

Hospitalization Age Rates in North Las Vegas

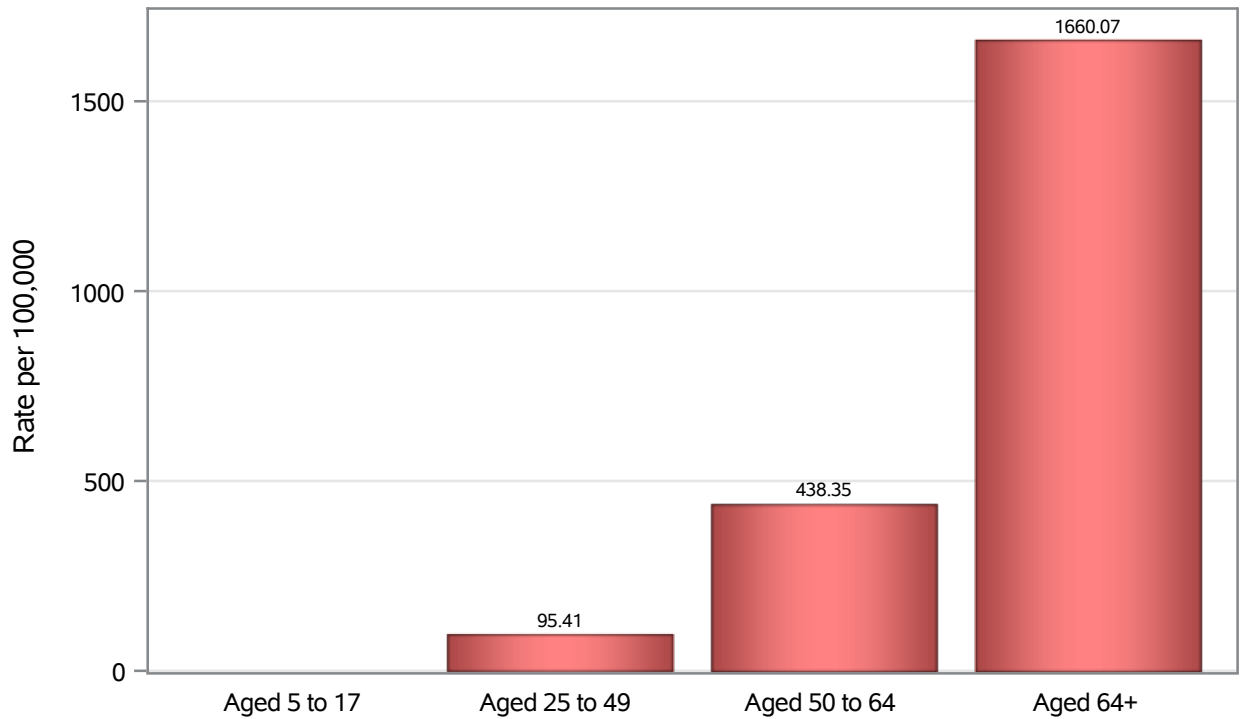


Investigations are ongoing; data are subject to change.

Reporting through 20OCT2021

North Las Vegas zip codes include 89030, 89031, 89032, 89033, 89036, 89081, 89084, 89085, 89086, 89087.

Death Age Rates in North Las Vegas



Investigations are ongoing; data are subject to change.

Reporting through 20OCT2021

North Las Vegas zip codes include 89030, 89031, 89032, 89033, 89036, 89081, 89084, 89085, 89086, 89087.

Table 5: Age and COVID19 in North Las Vegas

Case Status	Age Categories	N	%	Population	Rate per 100,000
Cases	Aged 4 or less	982	2.6	17,642	5566.3
	Aged 5 to 17	5039	13.1	49,981	10082
	Aged 18 to 24	5052	13.2	22,914	22048
	Aged 25 to 49	17477	45.6	82,803	21107
	Aged 50 to 64	6635	17.3	36,729	18065
	Aged 64+	3154	8.2	23,734	13289
	Unknown	8	0.0	.	.
Hospitalizations	Aged 4 or less	20	0.8	17,642	113.37
	Aged 5 to 17	30	1.3	49,981	60.02
	Aged 18 to 24	66	2.8	22,914	288.03
	Aged 25 to 49	648	27.5	82,803	782.58
	Aged 50 to 64	701	29.8	36,729	1908.6
	Aged 64+	890	37.8	23,734	3749.9
	Deaths	Aged 5 to 17	1	0.2	49,981
Aged 25 to 49		79	12.4	82,803	95.41
Aged 50 to 64		161	25.4	36,729	438.35
Aged 64+		394	62.0	23,734	1660.1

Note1: Population data source for calculating rate estimates: U.S. Census Bureau, ACS 5-year estimate.

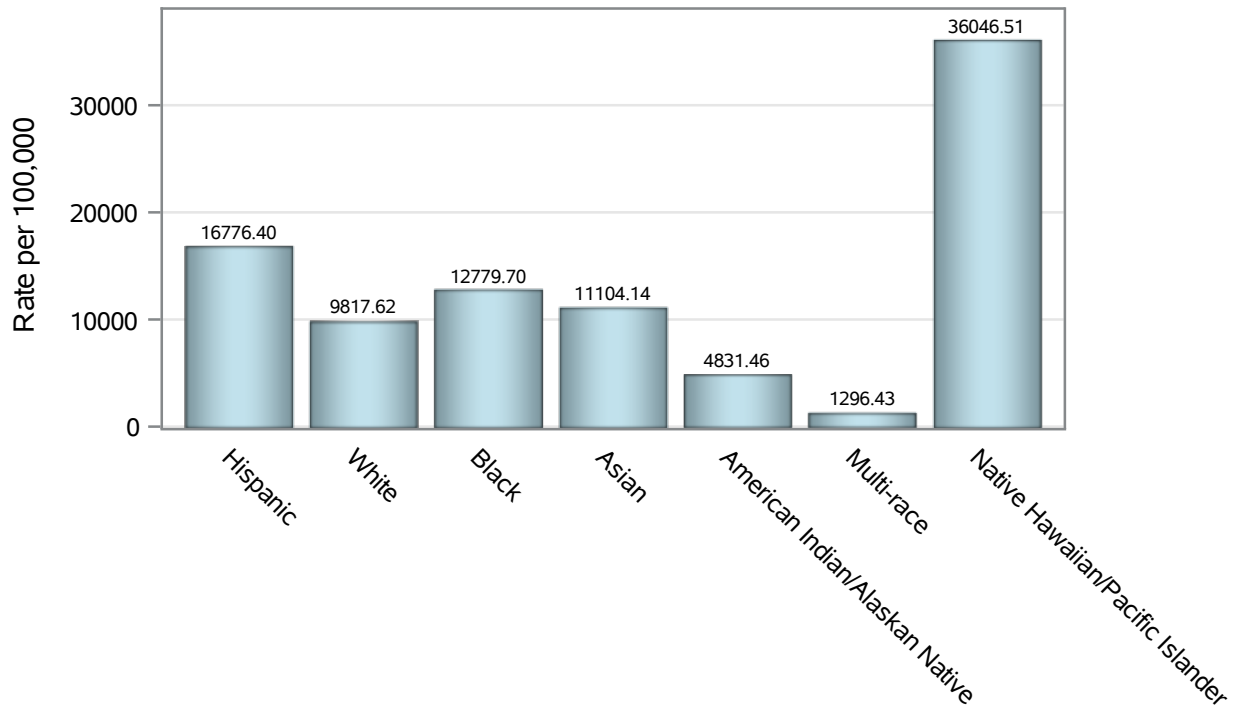
Note2: Rates for categories with fewer than 12 cases are suppressed due to high relative standard error.

Note3: Hospitalizations are regardless of deceased status; Deaths are regardless of hospitalization status

**Investigations are ongoing; data are subject to change.
Reporting through 20OCT2021**

North Las Vegas zip codes include 89030, 89031, 89032, 89033, 89036, 89081, 89084, 89085, 89086, 89087.

Case Race/Ethnicity Rates in North Las Vegas

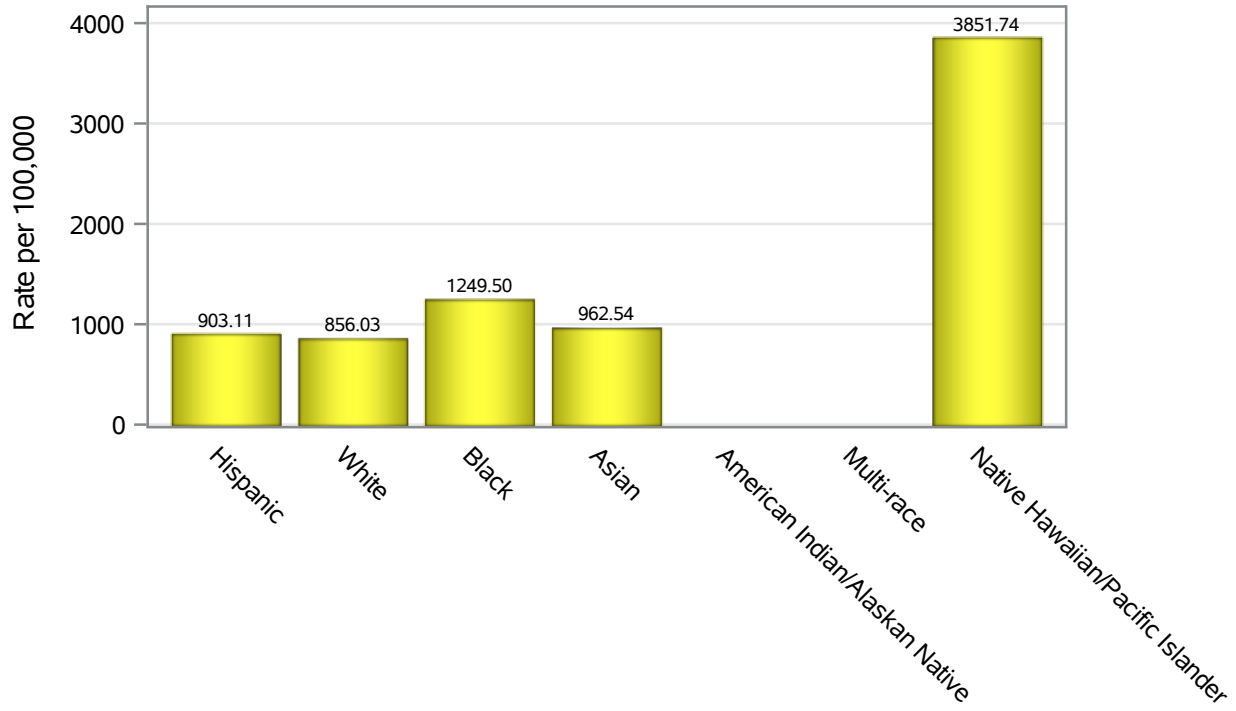


Investigations are ongoing; data are subject to change.

Reporting through 20OCT2021

North Las Vegas zip codes include 89030, 89031, 89032, 89033, 89036, 89081, 89084, 89085, 89086, 89087.

Hospitalization Race/Ethnicity Rates in North Las Vegas

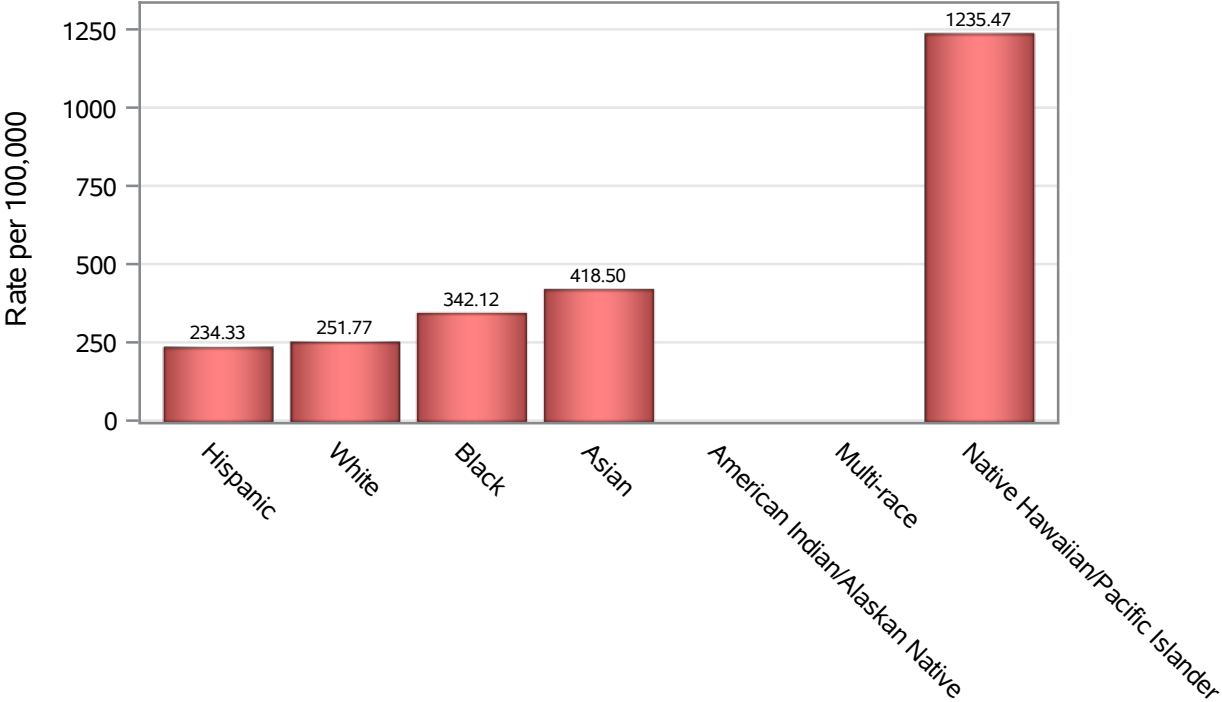


Investigations are ongoing; data are subject to change.

Reporting through 20OCT2021

North Las Vegas zip codes include 89030, 89031, 89032, 89033, 89036, 89081, 89084, 89085, 89086, 89087.

Death Race/Ethnicity Rates in North Las Vegas



Investigations are ongoing; data are subject to change.

Reporting through 20OCT2021

North Las Vegas zip codes include 89030, 89031, 89032, 89033, 89036, 89081, 89084, 89085, 89086, 89087.

Table 6: Race/Ethnicity and COVID19 in North Las Vegas

Case Status	Race Ethnicity Categories	N	%	Population	Rate per 100,000
Cases	Hispanic	16180	42.2	96,445	16776
	White	6239	16.3	63,549	9817.6
	Black	6014	15.7	47,059	12780
	Asian	1592	4.2	14,337	11104
	American Indian/Alaskan Native	43	0.1	890	4831.5
	Multi-race	126	0.3	9,719	1296.4
	Native Hawaiian/Pacific Islander	496	1.3	1,376	36047
	Unknown	7657	20.0	.	.
Hospitalizations	Hispanic	871	37.0	96,445	903.11
	White	544	23.1	63,549	856.03
	Black	588	25.0	47,059	1249.5
	Asian	138	5.9	14,337	962.54
	American Indian/Alaskan Native	8	0.3	890	.
	Multi-race	7	0.3	9,719	.
	Native Hawaiian/Pacific Islander	53	2.3	1,376	3851.7
	Unknown	146	6.2	.	.
Deaths	Hispanic	226	35.6	96,445	234.33
	White	160	25.2	63,549	251.77
	Black	161	25.4	47,059	342.12
	Asian	60	9.4	14,337	418.50
	American Indian/Alaskan Native	4	0.6	890	.
	Multi-race	2	0.3	9,719	.
	Native Hawaiian/Pacific Islander	17	2.7	1,376	1235.5
	Unknown	5	0.8	.	.

Note1: Population data source for calculating rate estimates: U.S. Census Bureau, ACS 5-year estimate.

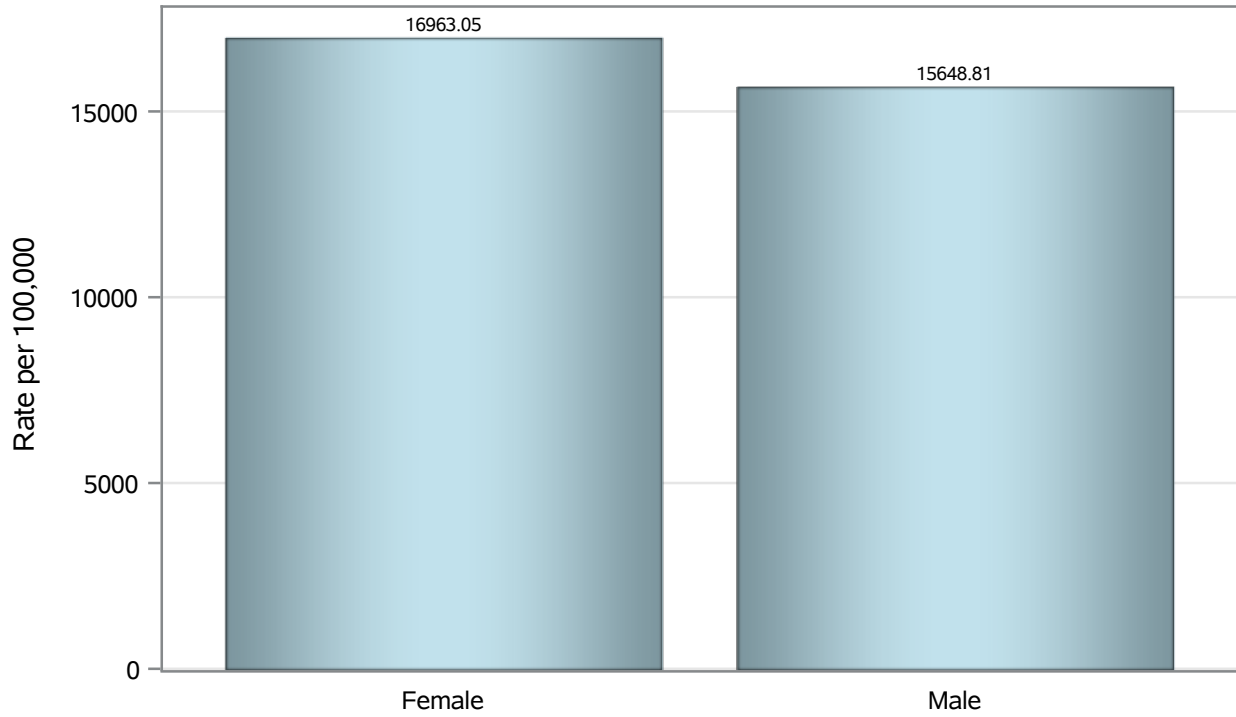
Note2: Rates for categories with fewer than 12 cases are suppressed due to high relative standard error.

Note3: Hospitalizations are regardless of deceased status; Deaths are regardless of hospitalization status

**Investigations are ongoing; data are subject to change.
Reporting through 20OCT2021**

North Las Vegas zip codes include 89030, 89031, 89032, 89033, 89036, 89081, 89084, 89085, 89086, 89087.

Case Birth Sex Rates in North Las Vegas

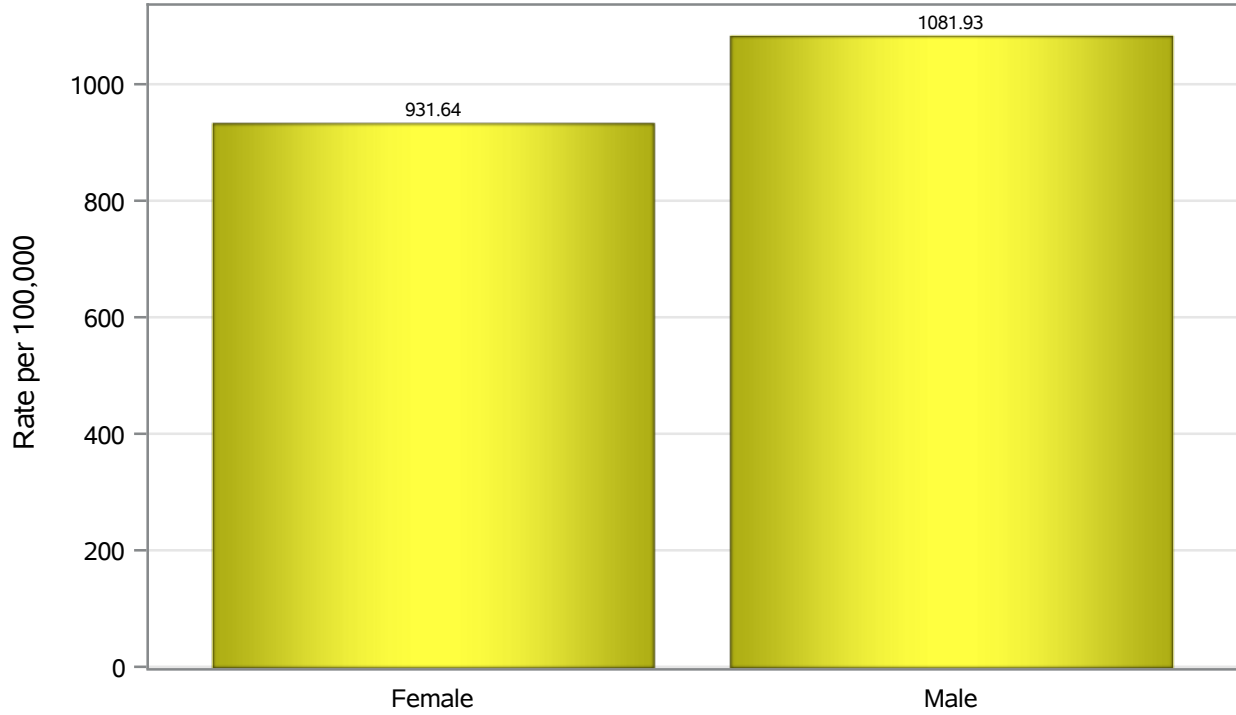


Investigations are ongoing; data are subject to change.

Reporting through 20OCT2021

North Las Vegas zip codes include 89030, 89031, 89032, 89033, 89036, 89081, 89084, 89085, 89086, 89087.

Hospitalization Birth Sex Rates in North Las Vegas

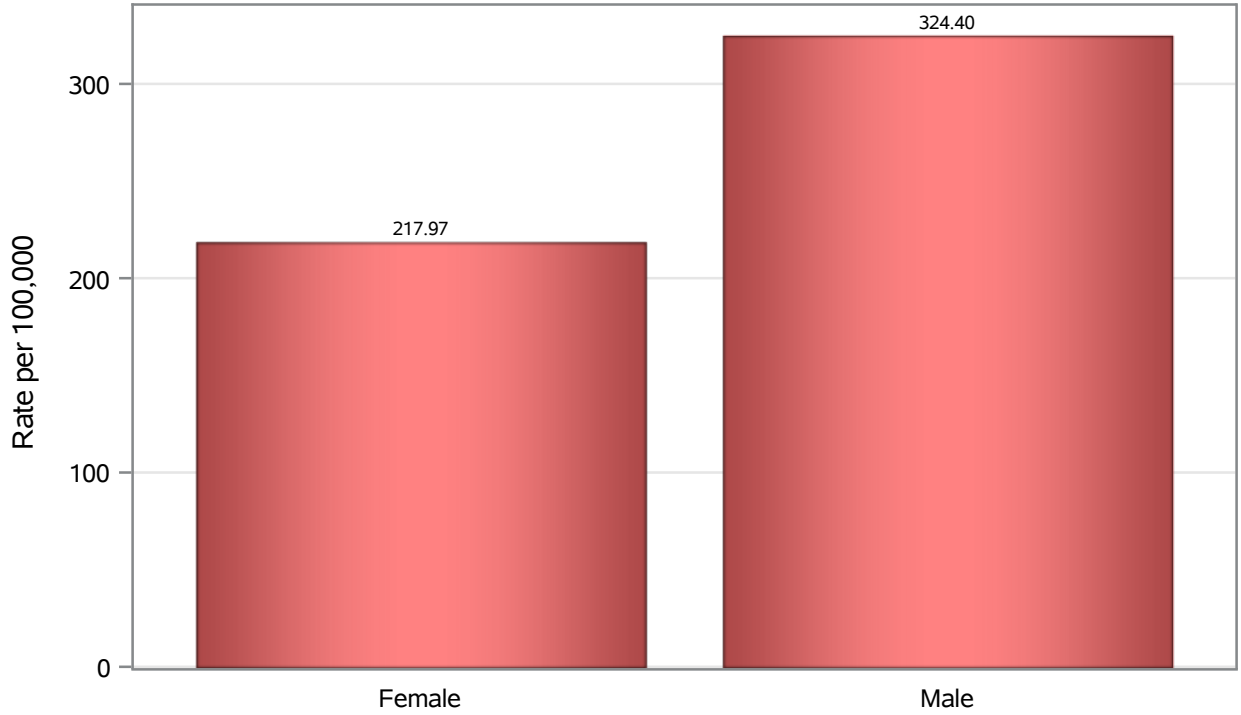


Investigations are ongoing; data are subject to change.

Reporting through 20OCT2021

North Las Vegas zip codes include 89030, 89031, 89032, 89033, 89036, 89081, 89084, 89085, 89086, 89087.

Death Birth Sex Rates in North Las Vegas



Investigations are ongoing; data are subject to change.

Reporting through 20OCT2021

North Las Vegas zip codes include 89030, 89031, 89032, 89033, 89036, 89081, 89084, 89085, 89086, 89087.

Table 7: Birth Sex and COVID19 in North Las Vegas

Case Status	Birth Sex Categories	N	%	Population	Rate per 100,000
Cases	Female	20156	52.6	118823	16963
	Male	17993	46.9	114980	15649
	Unknown	198	0.5	.	.
Hospitalizations	Female	1107	47.0	118823	931.64
	Male	1244	52.8	114980	1081.9
	Unknown	4	0.2	.	.
Deaths	Female	259	40.8	118823	217.97
	Male	373	58.7	114980	324.40
	Unknown	3	0.5	.	.

Note1: Population data source for calculating rate estimates: U.S. Census Bureau, ACS 5-year estimate.

Note2: Rates for categories with fewer than 12 cases are suppressed due to high relative standard error.

Note3: Hospitalizations are regardless of deceased status; Deaths are regardless of hospitalization status

**Investigations are ongoing; data are subject to change.
Reporting through 20OCT2021**

North Las Vegas zip codes include 89030, 89031, 89032, 89033, 89036, 89081, 89084, 89085, 89086, 89087.